

V&V Reference Report

L2 ASCDS Version : 8.4.4

Observation 9232 - L2 Version 2
Chandra X-Ray Center

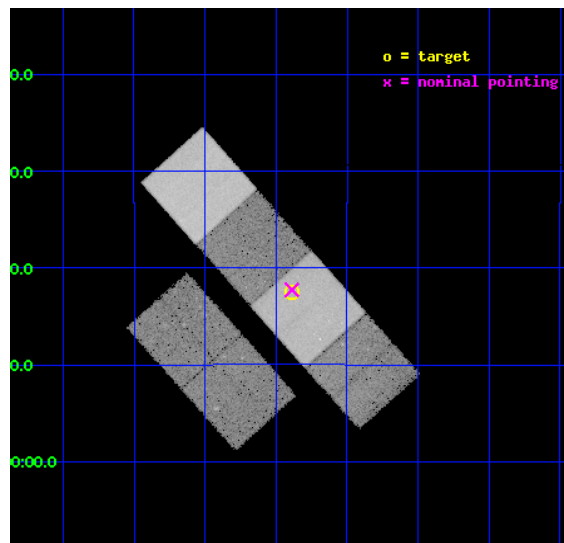
L2 Processing Date : May 10 2012

Contents

1	Front	2
2	OBI	3
2.1	OBI	3
2.1.1	Images	3
2.1.2	Bias	3
2.1.3	Parameters	4
2.1.4	Events	4
2.2	Compared Parameters	5
2.3	Aspect	6
2.4	Star Slots	9
2.4.1	Slot 3	9
2.4.2	Slot 4	10
2.4.3	Slot 5	11
2.4.4	Slot 6	12
2.4.5	Slot 7	13
2.5	FID Slots	14
2.5.1	Slot 0	14
2.5.2	Slot 1	15
2.5.3	Slot 2	16
A	Summary	17
A.1	Status	17
A.2	Comments	17

1 Front

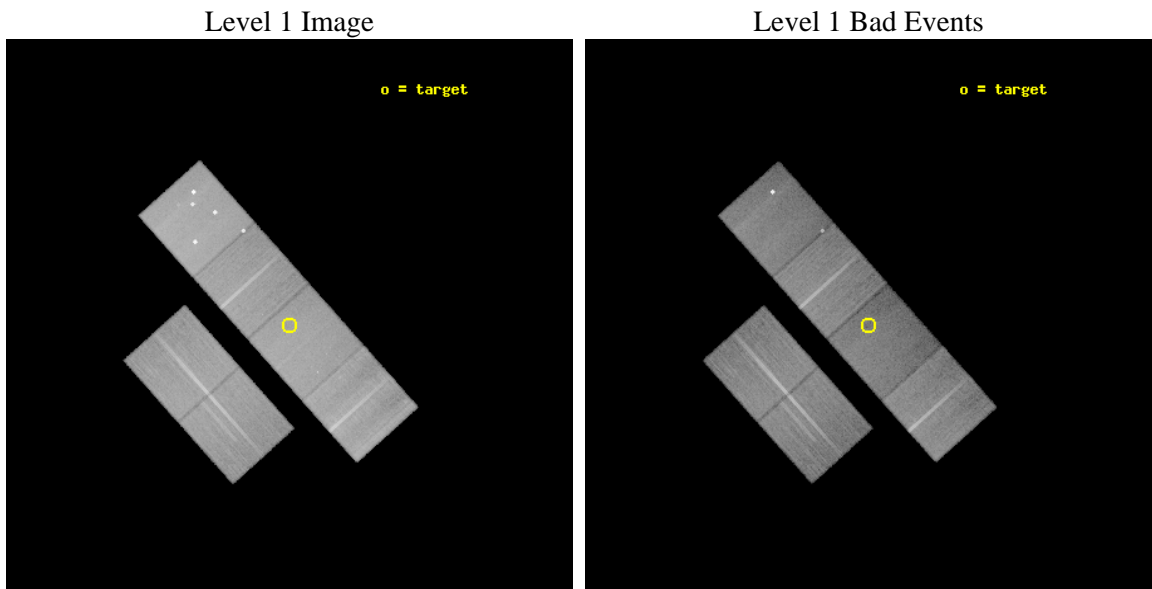
seq_num	701673	Sequence number
obs_id	9232	Observation id
title	X-Ray Emission in Radio-Quiet $z > 4$ Quasars: A New Perspective on the AGN-Starburst-Connection?	Proposal title
observer	Dominik Riechers	Principal investigator
object	BR1202-0725	Source name
dtcycle	0	
cycle	P	events from which exps? Prim/Second/Both
ra_targ	181.34625	Observer's specified target RA [deg]
dec_targ	-7.709167	Observer's specified target Dec [deg]
ra_nom	181.34711422958	Nominal RA [deg]
dec_nom	-7.7044029058855	Nominal Dec [deg]
roll_nom	48.156744853043	Nominal Roll [deg]
revision	2	Processing version of data
ontime	29701.832136452	Sum of GTIs [s]
livetime	29325.729653644	Livetime [s]
ontime2	29701.873176455	Sum of GTIs [s]
ontime3	29701.709016442	Sum of GTIs [s]
ontime5	29701.791096449	Sum of GTIs [s]
ontime6	29701.750056446	Sum of GTIs [s]
ontime7	29701.832136452	Sum of GTIs [s]
ontime8	29701.667976439	Sum of GTIs [s]
l2events	359104	Number of level 2 events



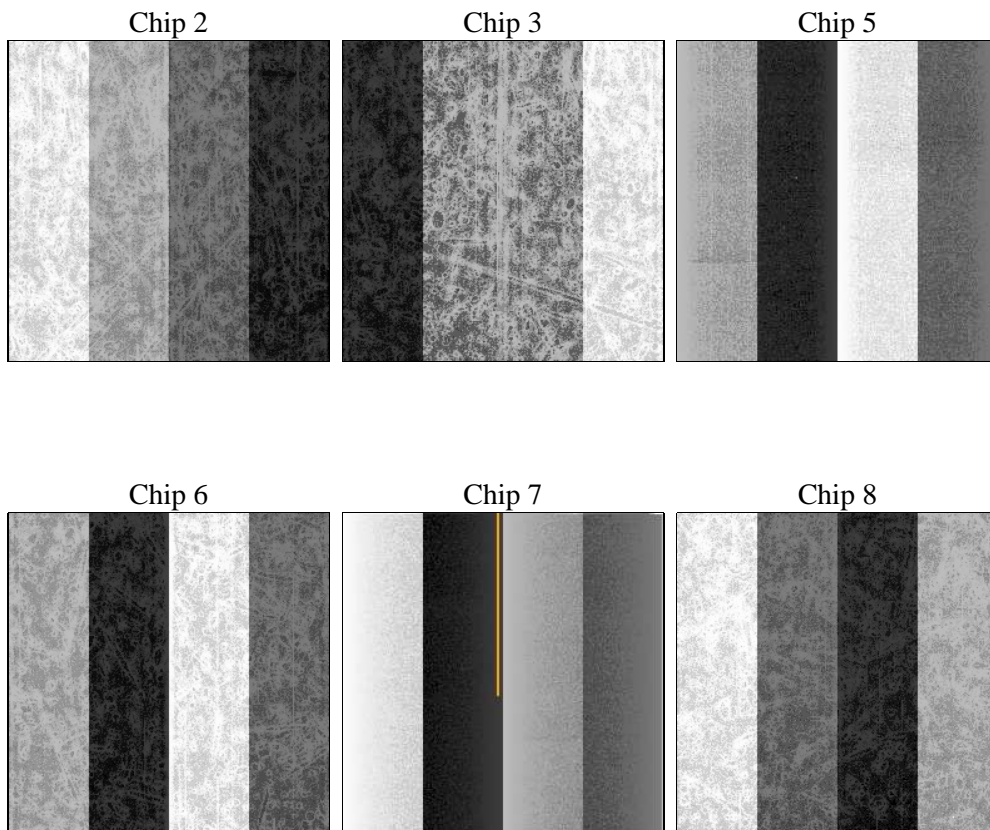
2 OBI

2.1 OBI

2.1.1 Images



2.1.2 Bias



2.1.3 Parameters

obi_num	0	Obi number	sched_exp_time	29662.000000	[s] Scheduled observation exposure time
ascdsver	8.4.4	Processing system revision	ontime	29701.832136452	Sum of GTIs [s]
caldbver	4.4.9	 	ontime2	29701.873176455	Sum of GTIs [s]
date	2012-05-10T11:29:22	Date and time of file creation	ontime3	29701.709016442	Sum of GTIs [s]
revision	2	Processing version of data	ontime5	29701.791096449	Sum of GTIs [s]
			ontime6	29701.750056446	Sum of GTIs [s]
			ontime7	29701.832136452	Sum of GTIs [s]
			ontime8	29701.667976439	Sum of GTIs [s]
			l1events	1681817	Number of level 1 events

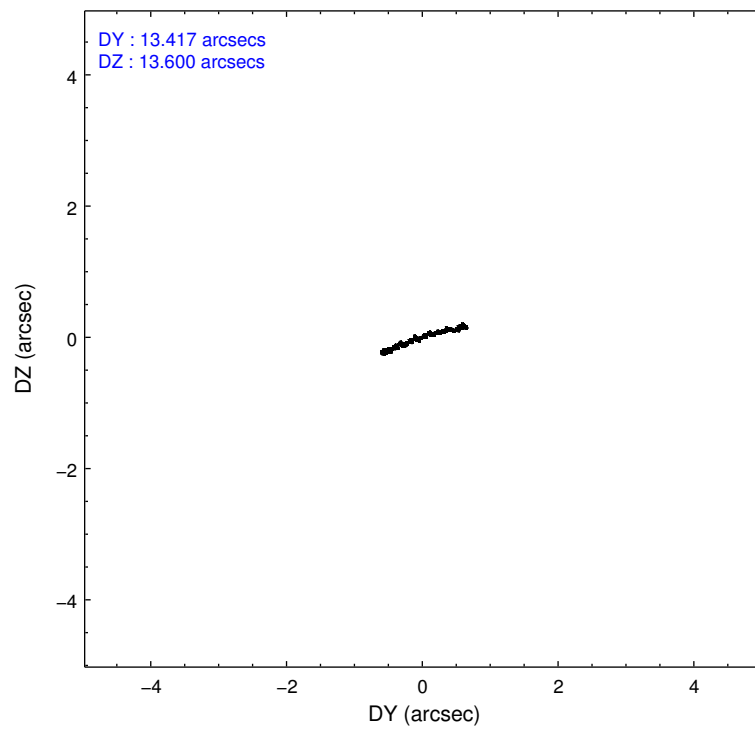
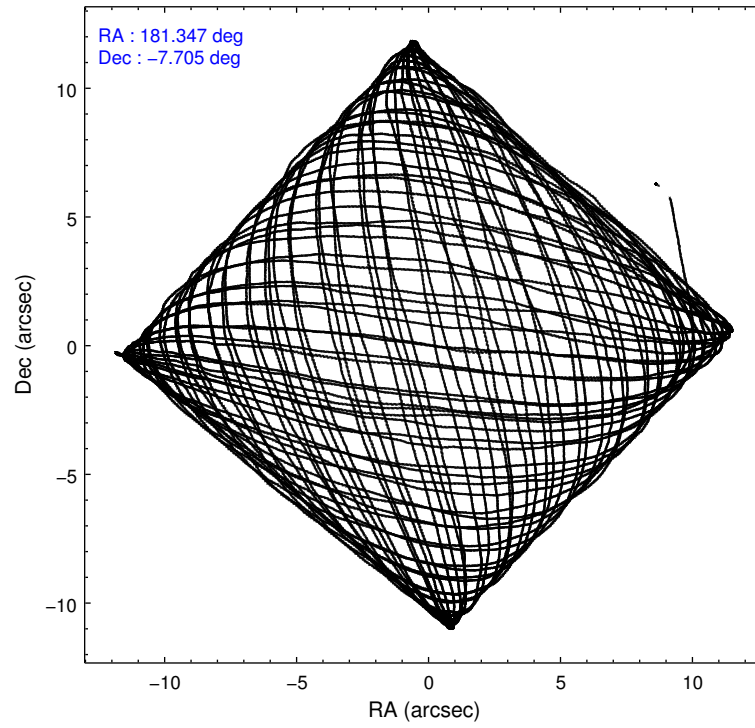
2.1.4 Events

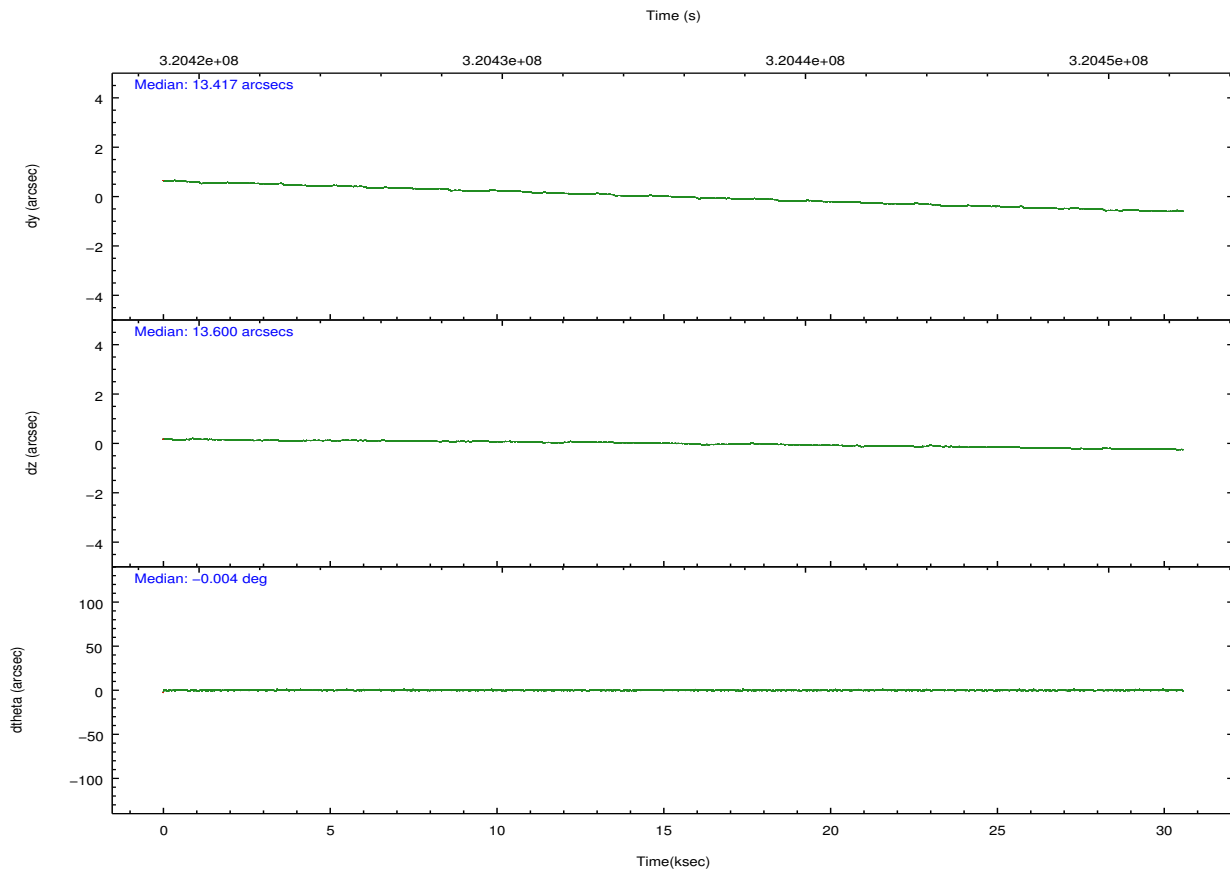
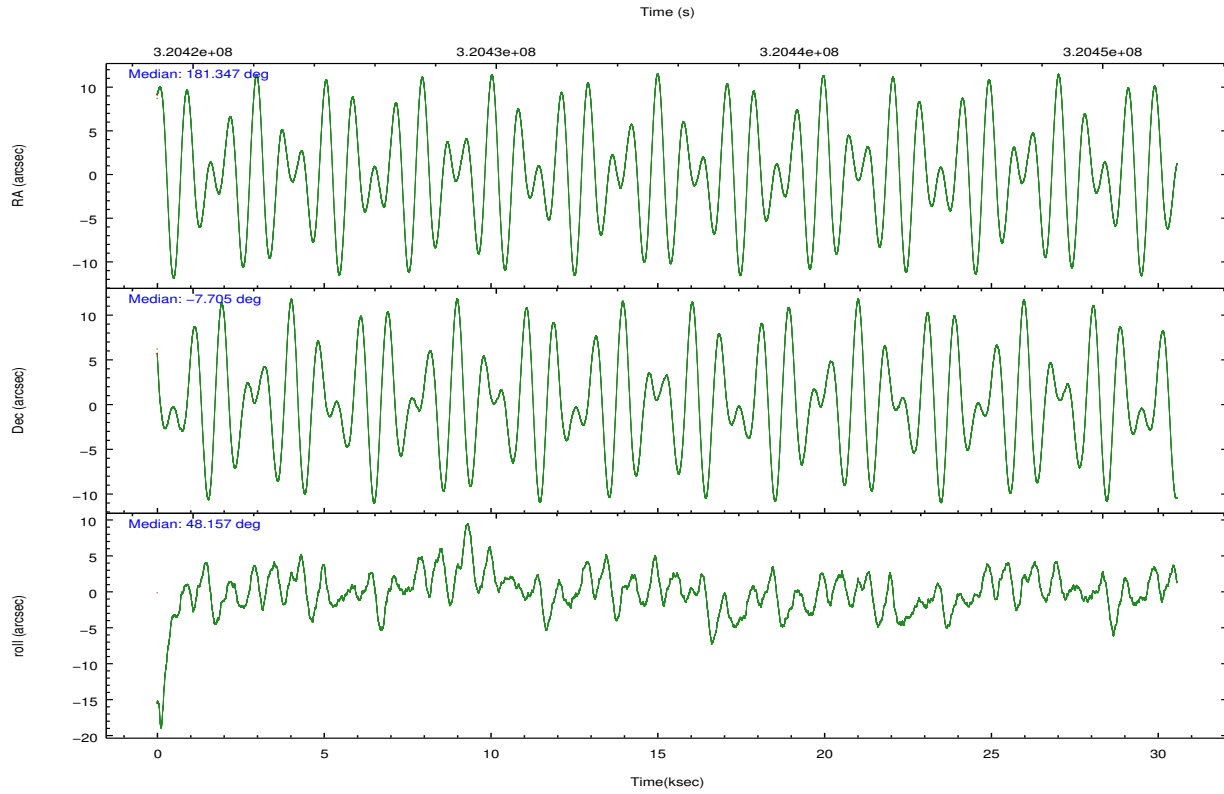
	ccd 2	ccd 3	ccd 5	ccd 6	ccd 7	ccd 8		ccd 2	ccd 3	ccd 5	ccd 6	ccd 7	ccd 8
level 1 events	261943	235376	365994	248154	270625	299725	grade 0 events	9335	7798	34601	8697	11481	20920
rejected events	237071	213271	177782	223354	147968	228442		3%	3%	9%	3%	4%	6%
rejected %	90%	90%	48%	90%	54%	76%	grade 1 events	168	115	1177	113	343	237
								0%	0%	0%	0%	0%	0%
							grade 2 events	5817	4660	51282	5590	24678	16227
								2%	1%	14%	2%	9%	5%
							grade 3 events	2560	2503	6953	2644	11122	7778
								0%	1%	1%	1%	4%	2%
							grade 4 events	2602	2549	6790	2618	11037	7209
								0%	1%	1%	1%	4%	2%
							grade 5 events	8139	9504	26958	9706	28087	13830
								3%	4%	7%	3%	10%	4%
							grade 6 events	4561	4600	88619	5260	64364	19157
								1%	1%	24%	2%	23%	6%
							grade 7 events	228761	203647	149614	213526	119513	214367
								87%	86%	40%	86%	44%	71%

2.2 Compared Parameters

Parameter	Planned	Actual	Parameter	Planned	Actual
Instrument	ACIS	ACIS	Obspar format version number	7	7
Detector	ACIS-235678	ACIS-235678	Obspar file type	PREDICTED	ACTUAL
Grating	NONE	NONE	Obspar update status	NONE	UPDATED
Data mode	FAINT	FAINT	CCD I0 on	N	N
Observation mode	POINTING	POINTING	CCD I1 on	N	N
[deg] Pointing RA	181.341819	181.3471142295773	CCD I2 on	O1	Y
[deg] Pointing Dec	-7.731230	-7.704402905885519	CCD I3 on	O2	Y
[deg] Pointing Roll	47.999406	48.15674485304268	CCD S0 on	N	N
[mm] SIM focus pos	-0.684267	-0.6828225247311905	CCD S1 on	Y	Y
[mm] SIM defocus	0	0.001444936568705701	CCD S2 on	Y	Y
[mm] SIM translation stage pos	-190.132523	-190.1425803651734	CCD S3 on	Y	Y
[mm] SIM translation stage offset	0	0.01005778216563158	CCD S4 on	Y	Y
[s] Observation start time (MET)	320421251.184000	320419886.57738	CCD S5 on	N	N
Observation start date	2008-02-26T13:53:06	2008-02-26T13:31:26	Number of optional ACIS chips dropped	0	0
[s] Observation end time (MET)	320450913.184000	320451498.09142	On-chip summing requested	N	N
Observation end date	2008-02-26T22:07:28	2008-02-26T22:18:18	Subarray requested	NONE	NONE
Read mode	TIMED	TIMED	Alternating exposures requested	N	N
			[s] Primary exposure time	0.000000	3.2

2.3 Aspect



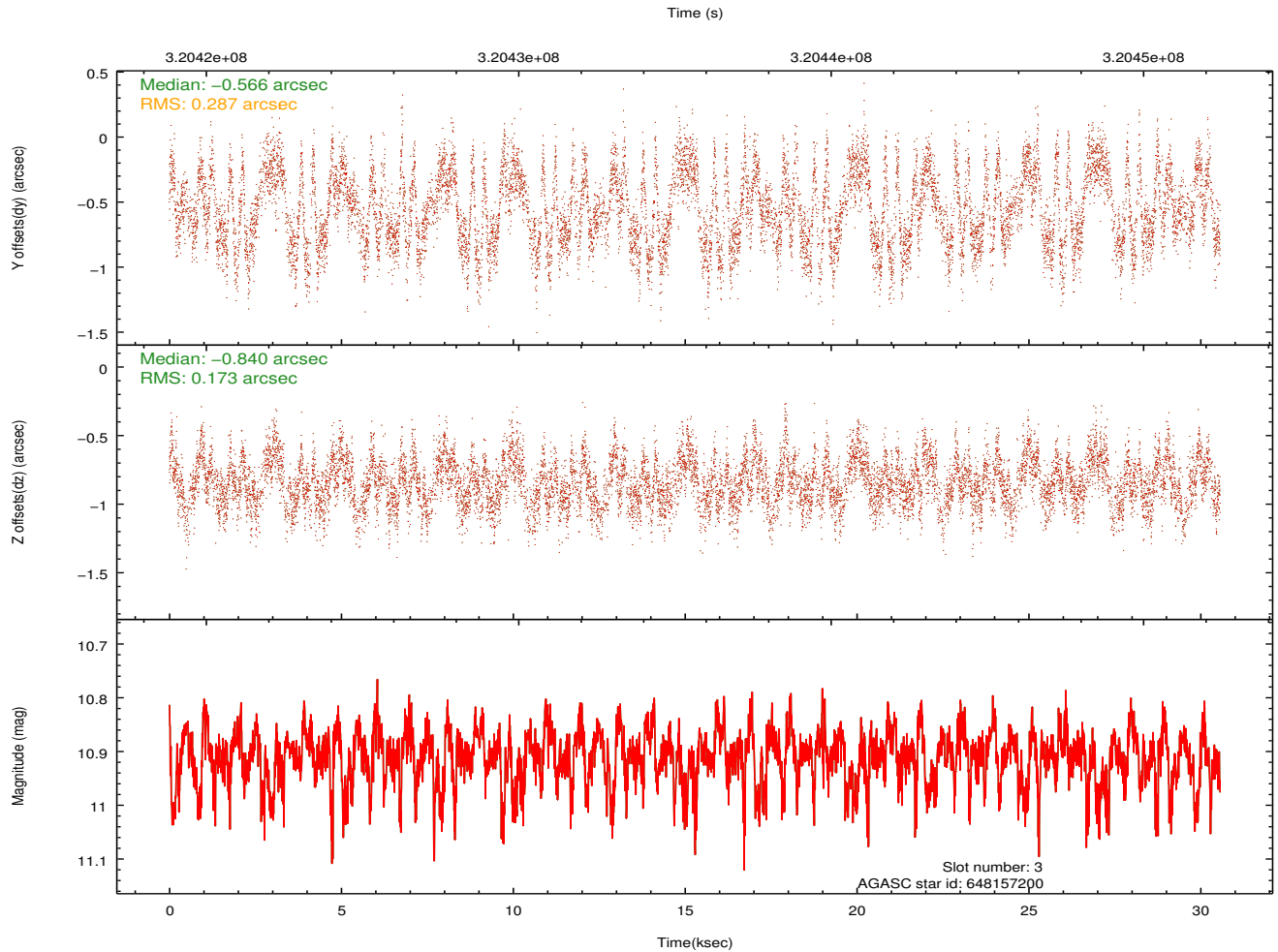
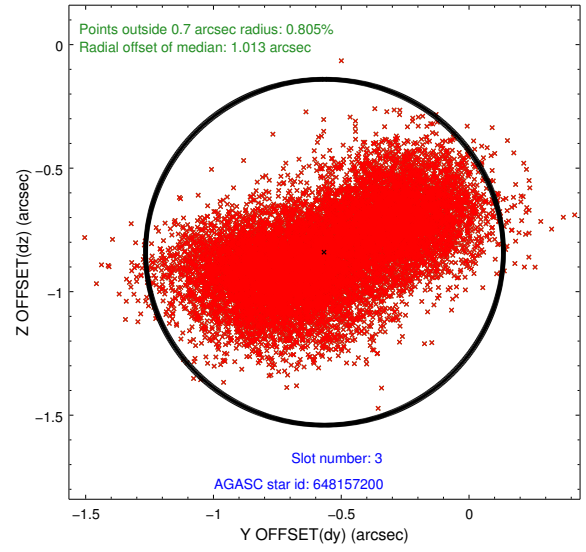
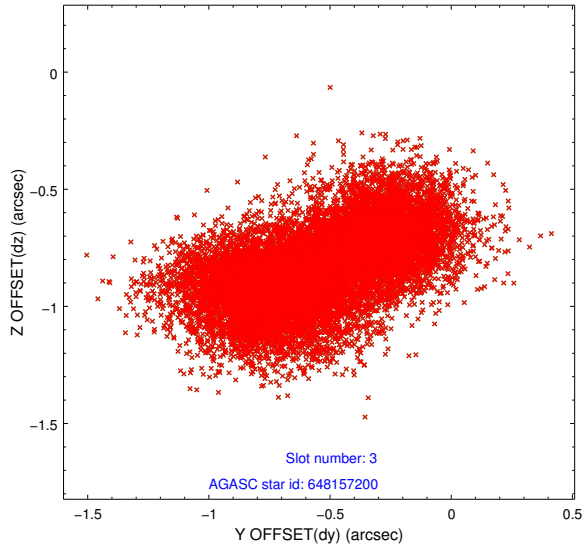


Slot Statistics

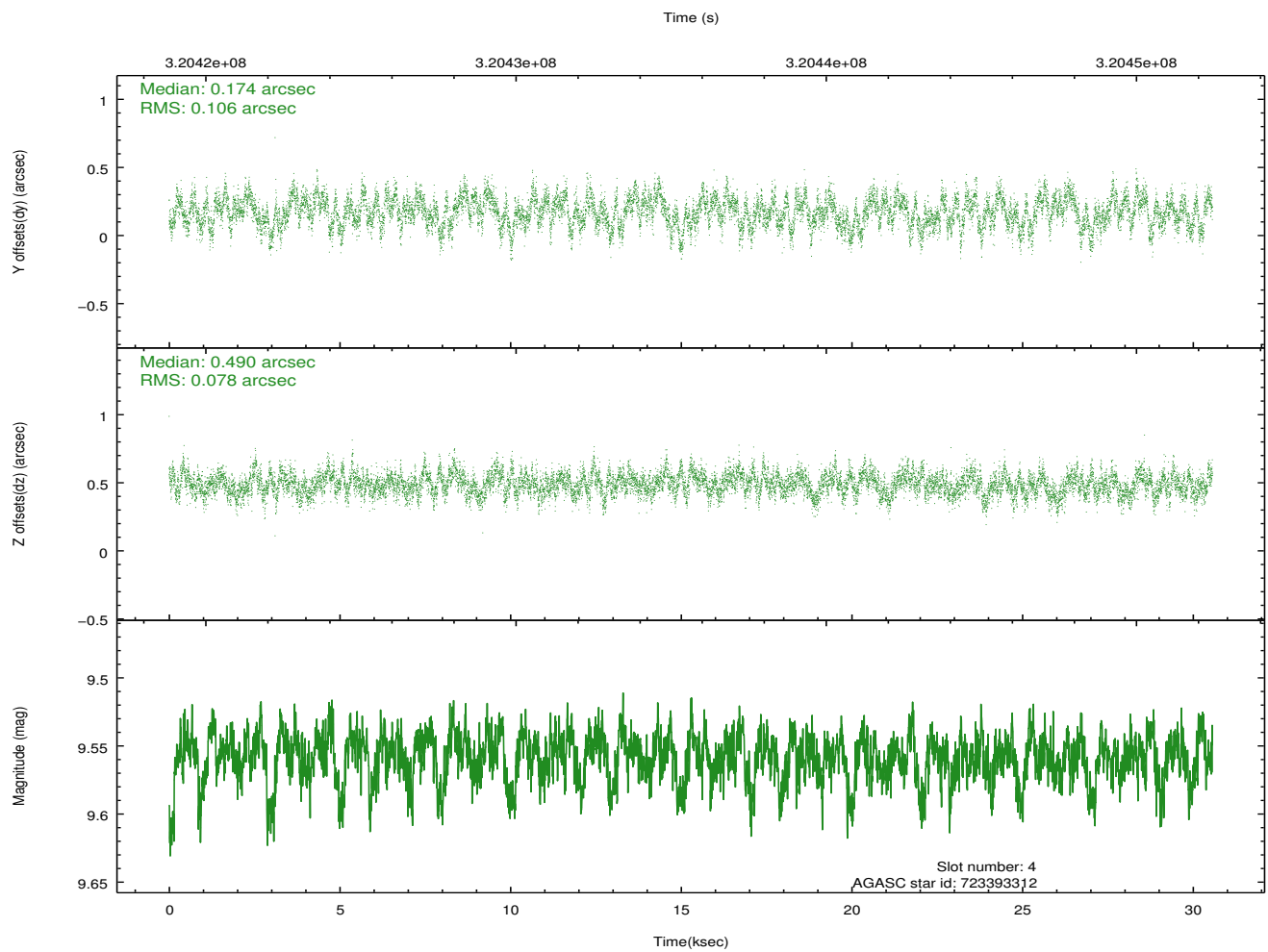
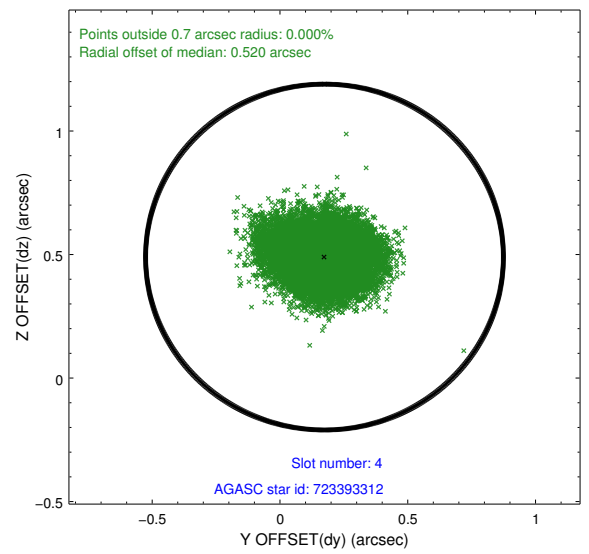
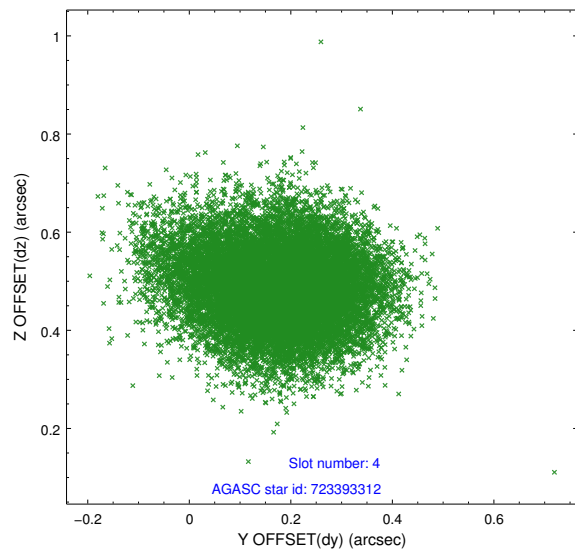
slot	status	id	mag	n_pts	med_dy	med_dz	dr1	dr2	ra	dec	mean_y	mean_z
0	FID	ACIS-S-2	7.10	7456	-0.036	-0.061	0.014	0.023	0.000000	0.000000	-766.39	-1734.93
1	FID	ACIS-S-4	7.19	7456	0.161	0.034	0.019	0.031	0.000000	0.000000	2147.07	173.56
2	FID	ACIS-S-5	7.23	7455	-0.156	0.033	0.010	0.015	0.000000	0.000000	-1819.25	167.33
3	BAD	648157200	10.91	13289	-0.566	-0.840	0.364	0.564	181.594584	-7.098492	2296.47	853.84
4	GUIDE	723393312	9.56	14895	0.174	0.490	0.141	0.224	181.846894	-7.525205	1757.12	-844.02
5	GUIDE	723394376	9.80	14892	0.188	0.263	0.181	0.282	181.467227	-8.140366	-795.00	-1317.46
6	GUIDE	648158136	10.40	14796	-0.091	-0.203	0.256	0.396	180.712636	-7.426767	-689.35	2400.69
7	GUIDE	723264944	8.73	14898	0.220	0.208	0.124	0.190	181.255643	-8.527713	-2335.78	-1690.77

2.4 Star Slots

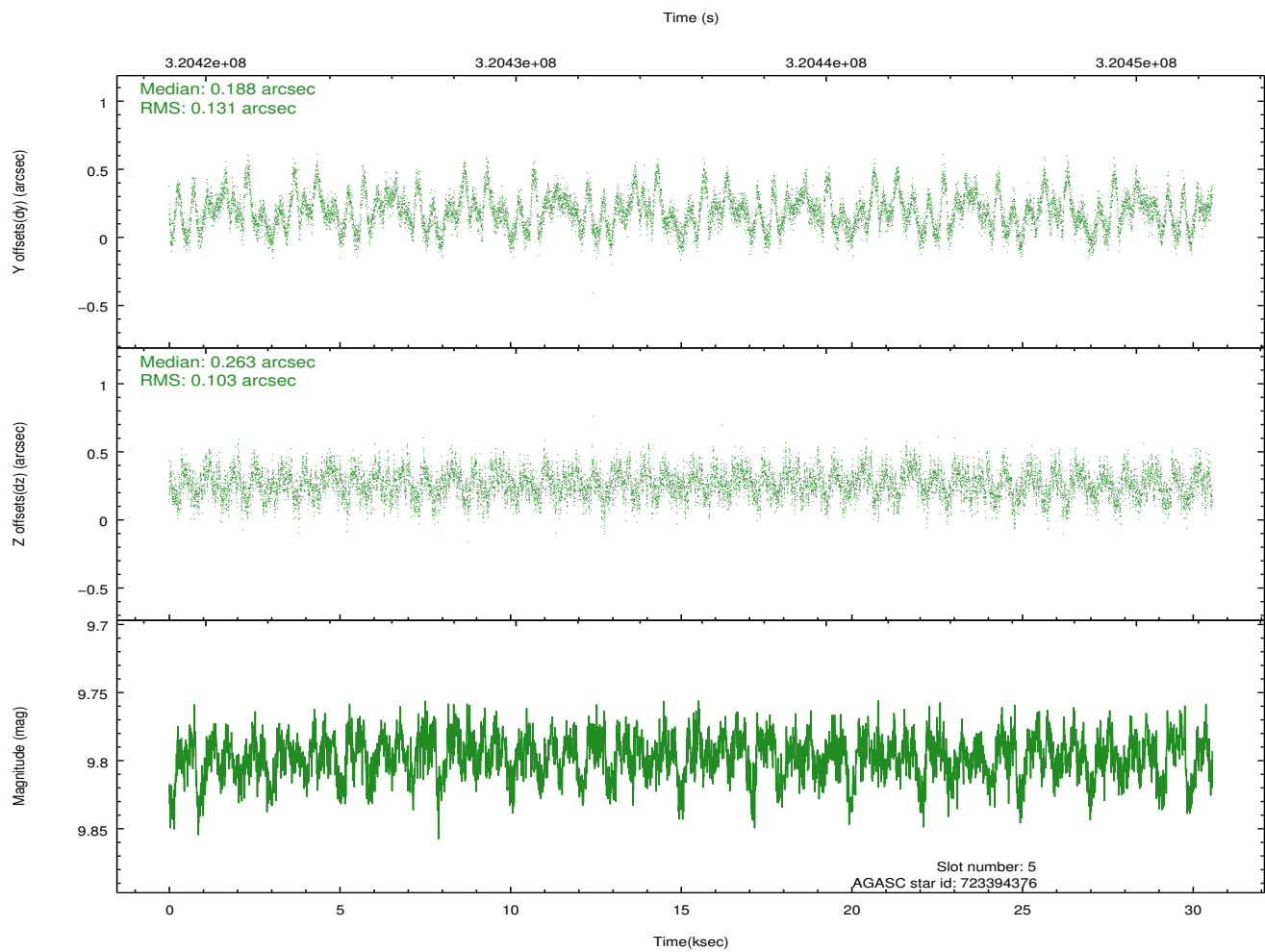
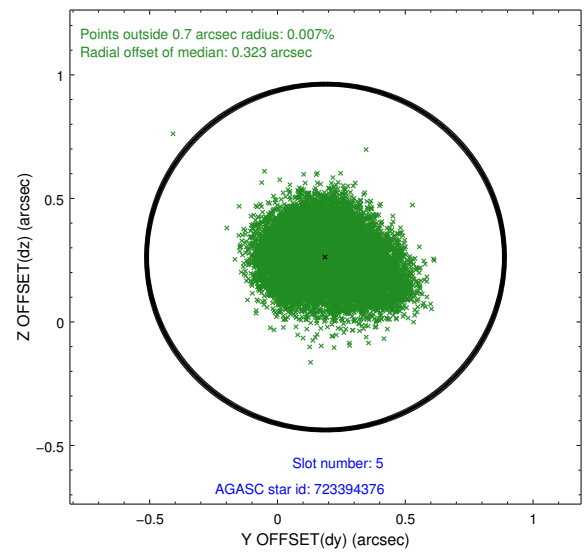
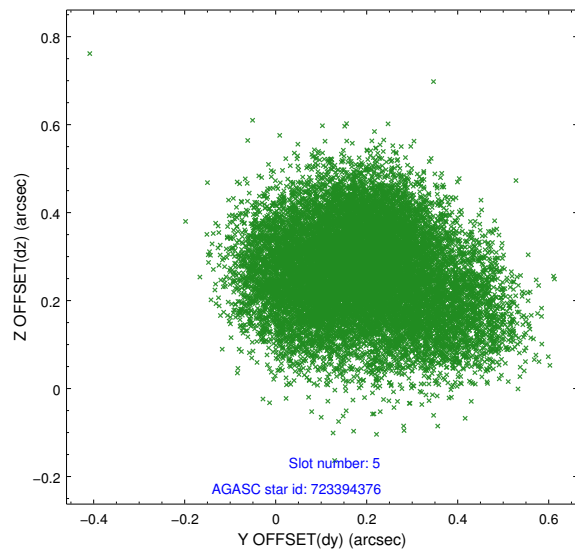
2.4.1 Slot 3



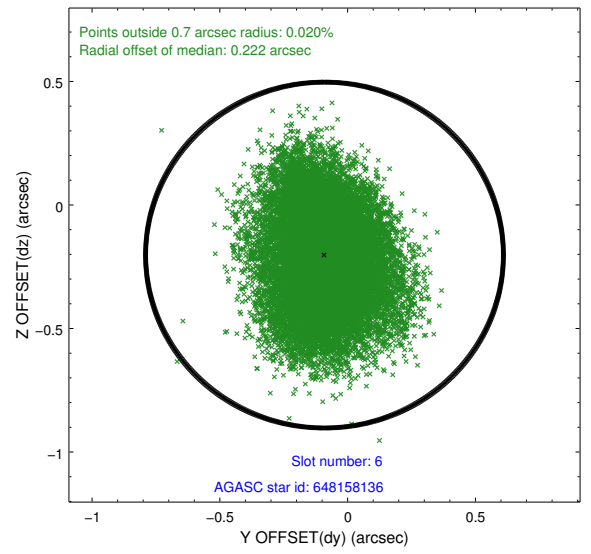
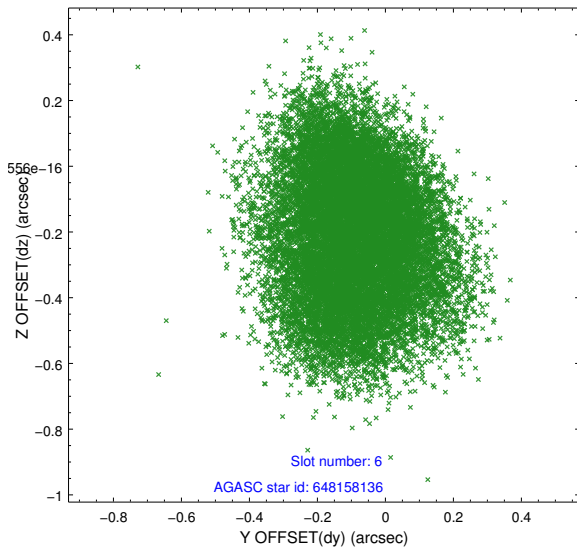
2.4.2 Slot 4



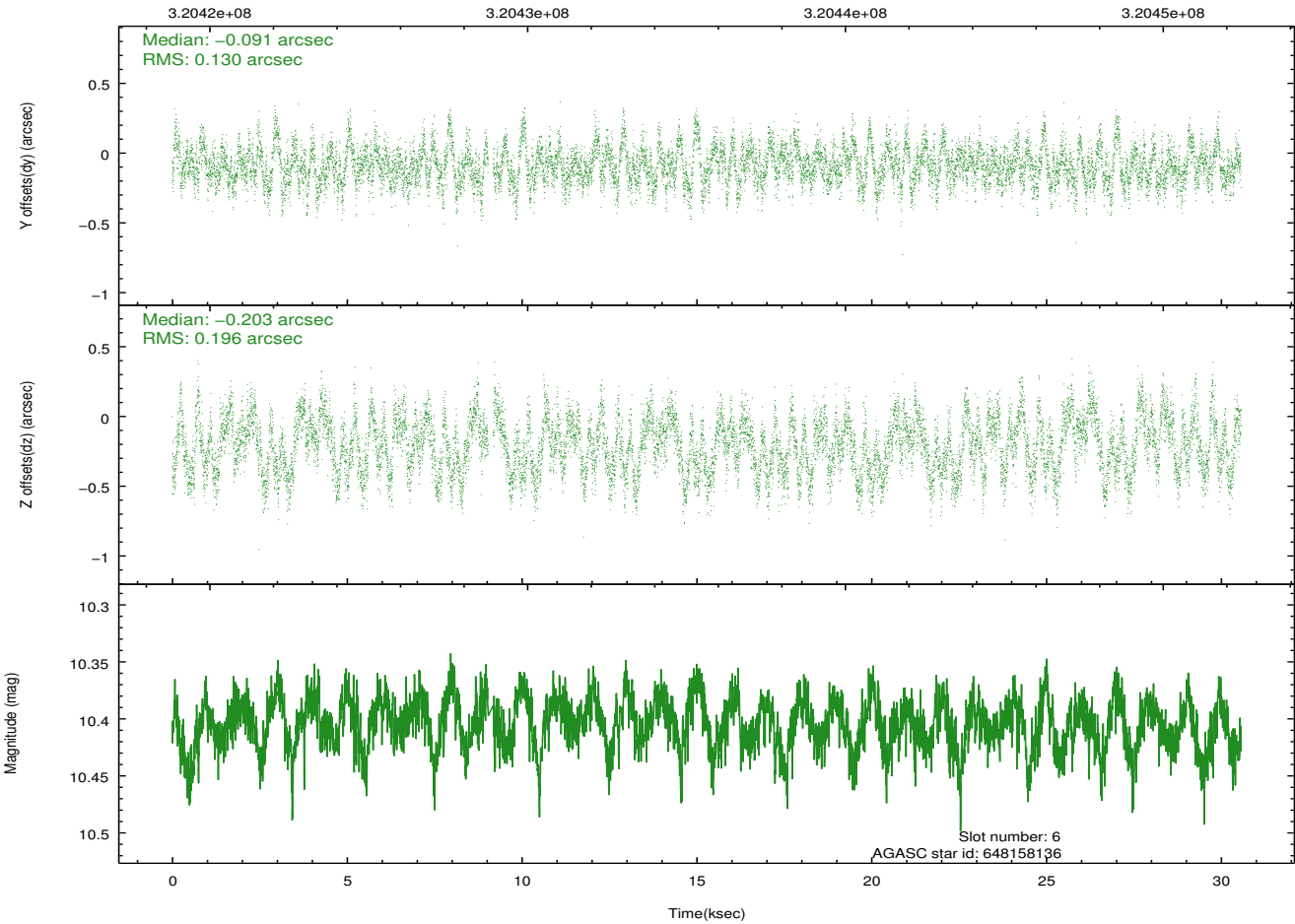
2.4.3 Slot 5



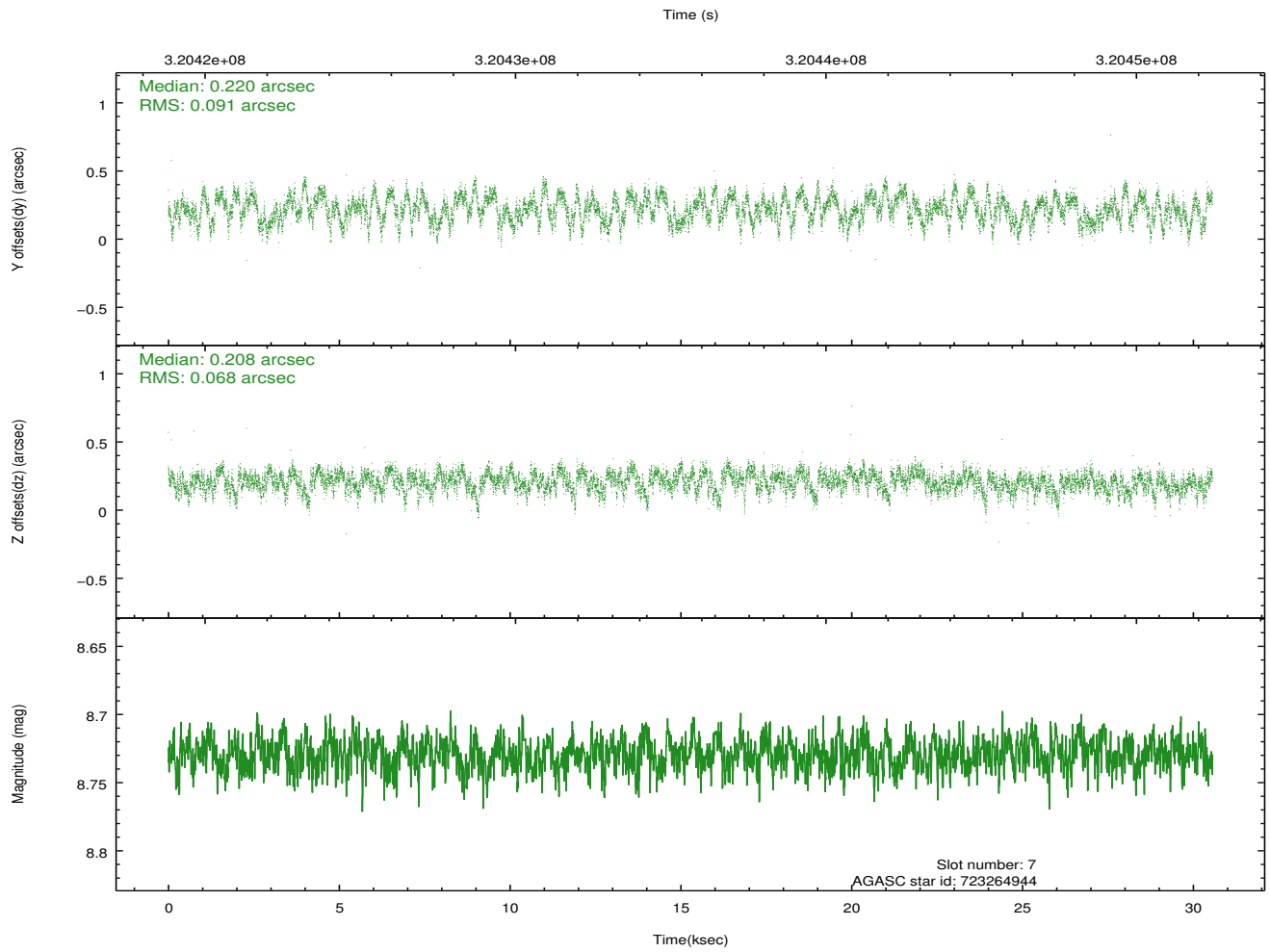
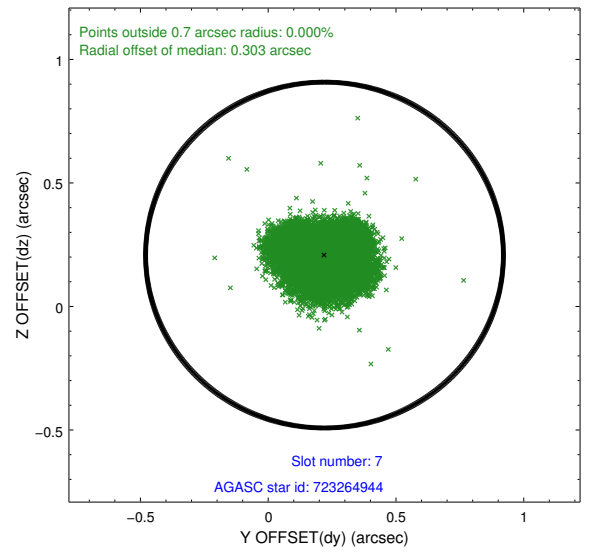
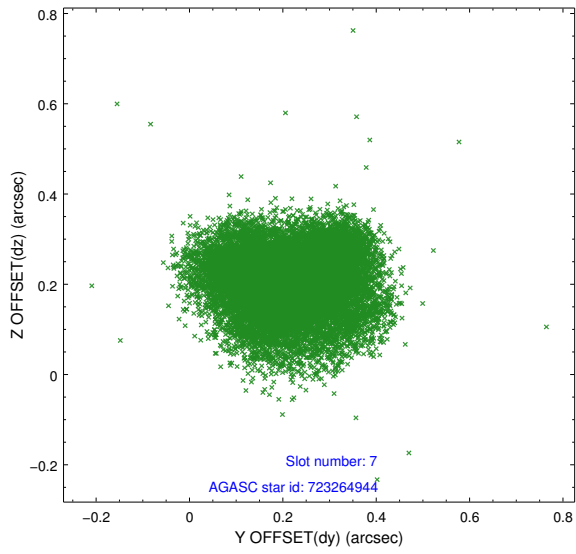
2.4.4 Slot 6



Time (s)

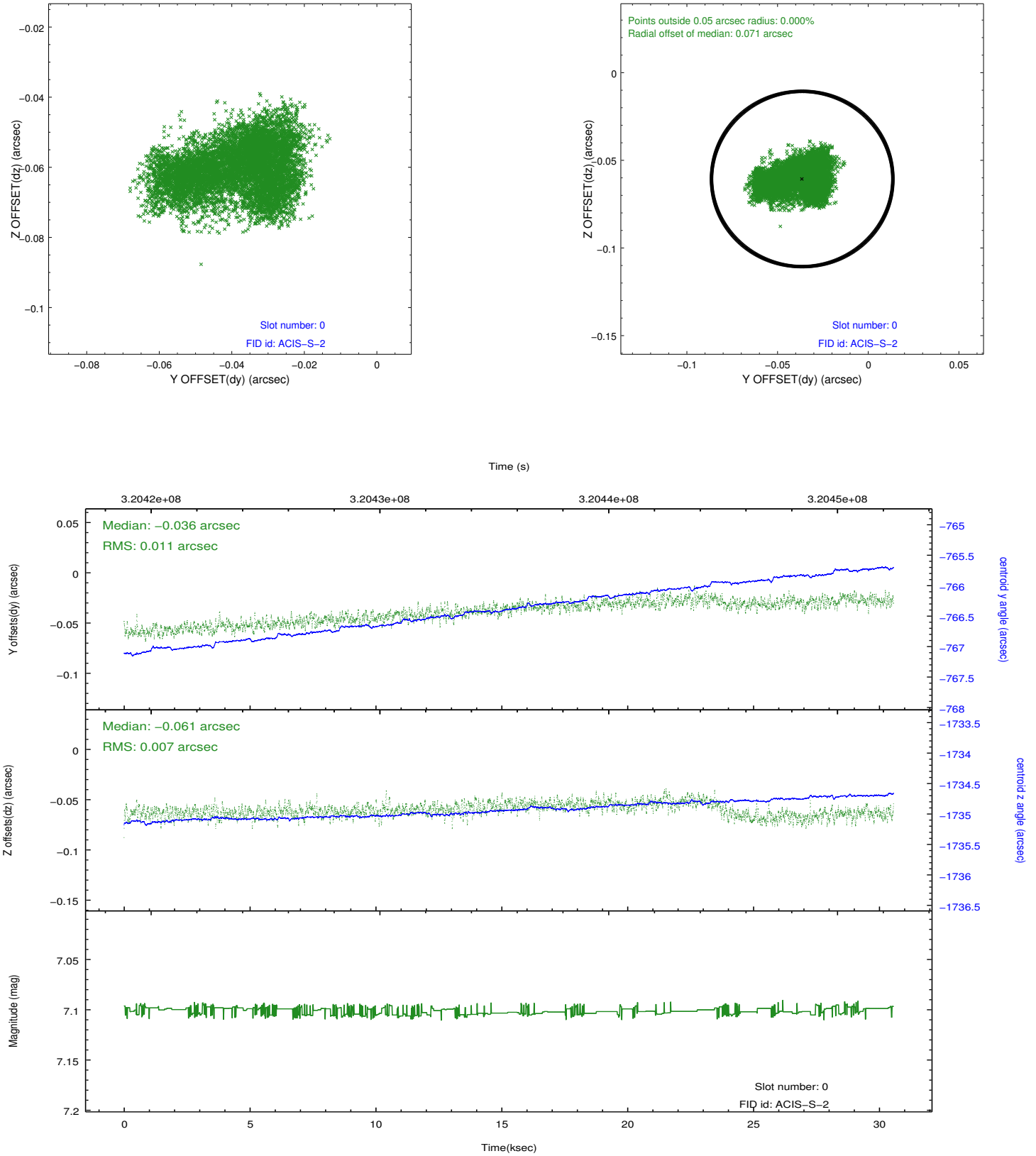


2.4.5 Slot 7

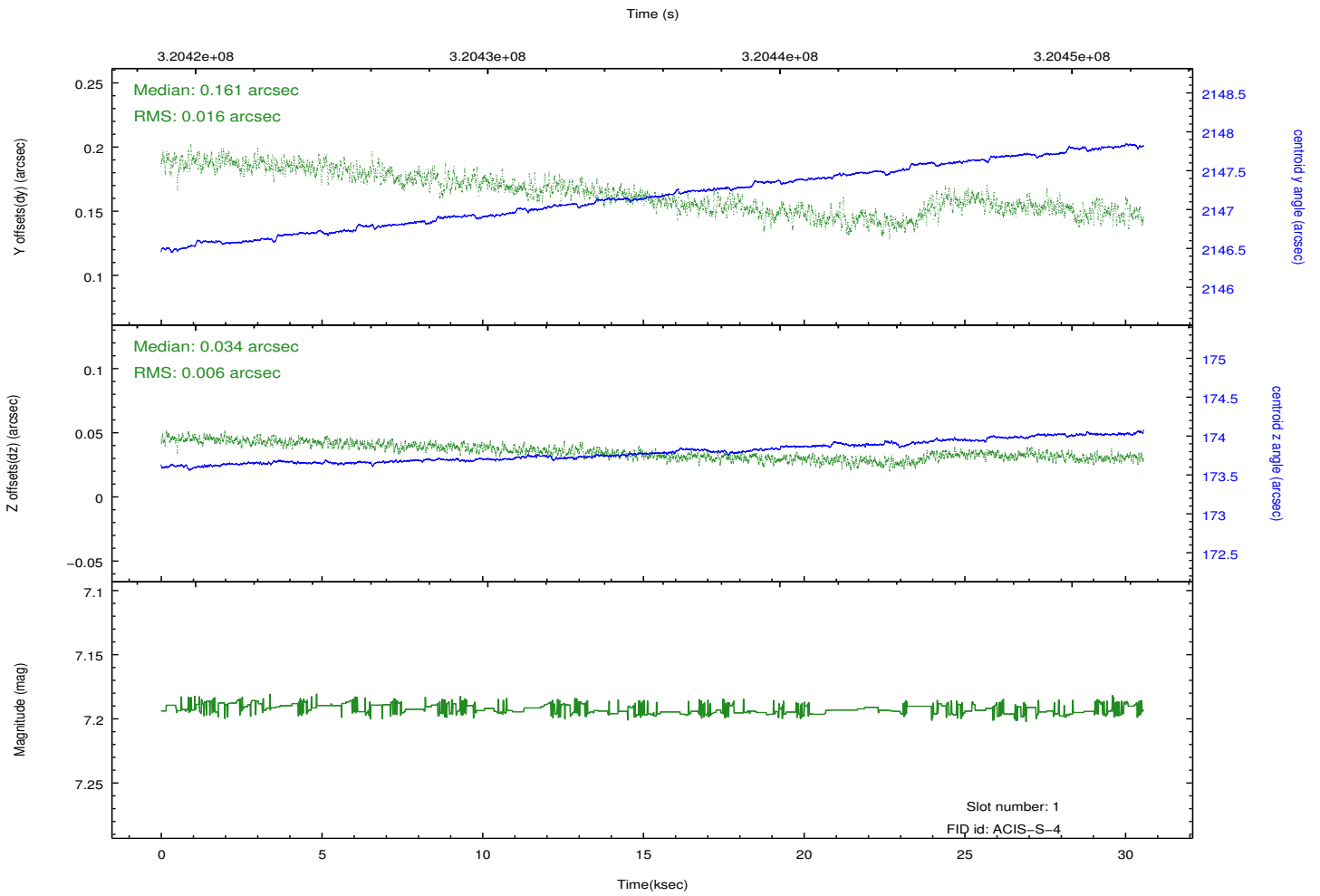
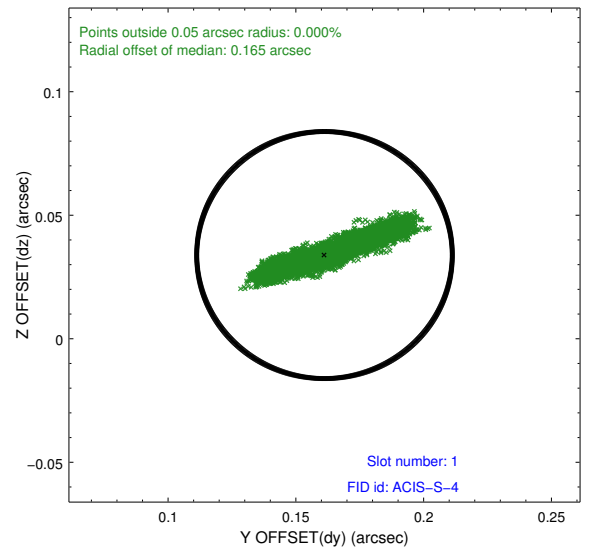
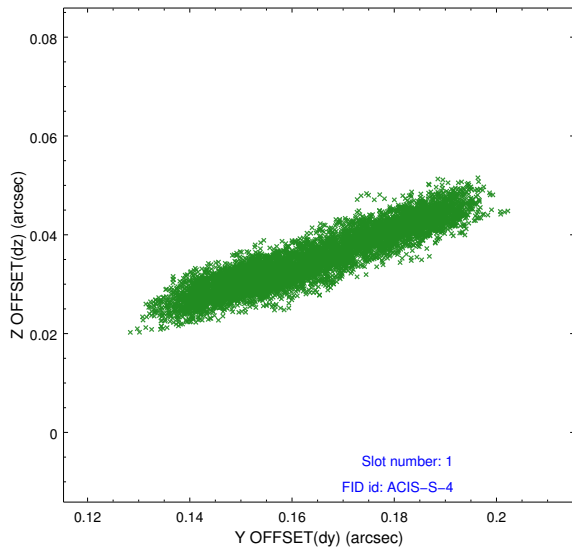


2.5 FID Slots

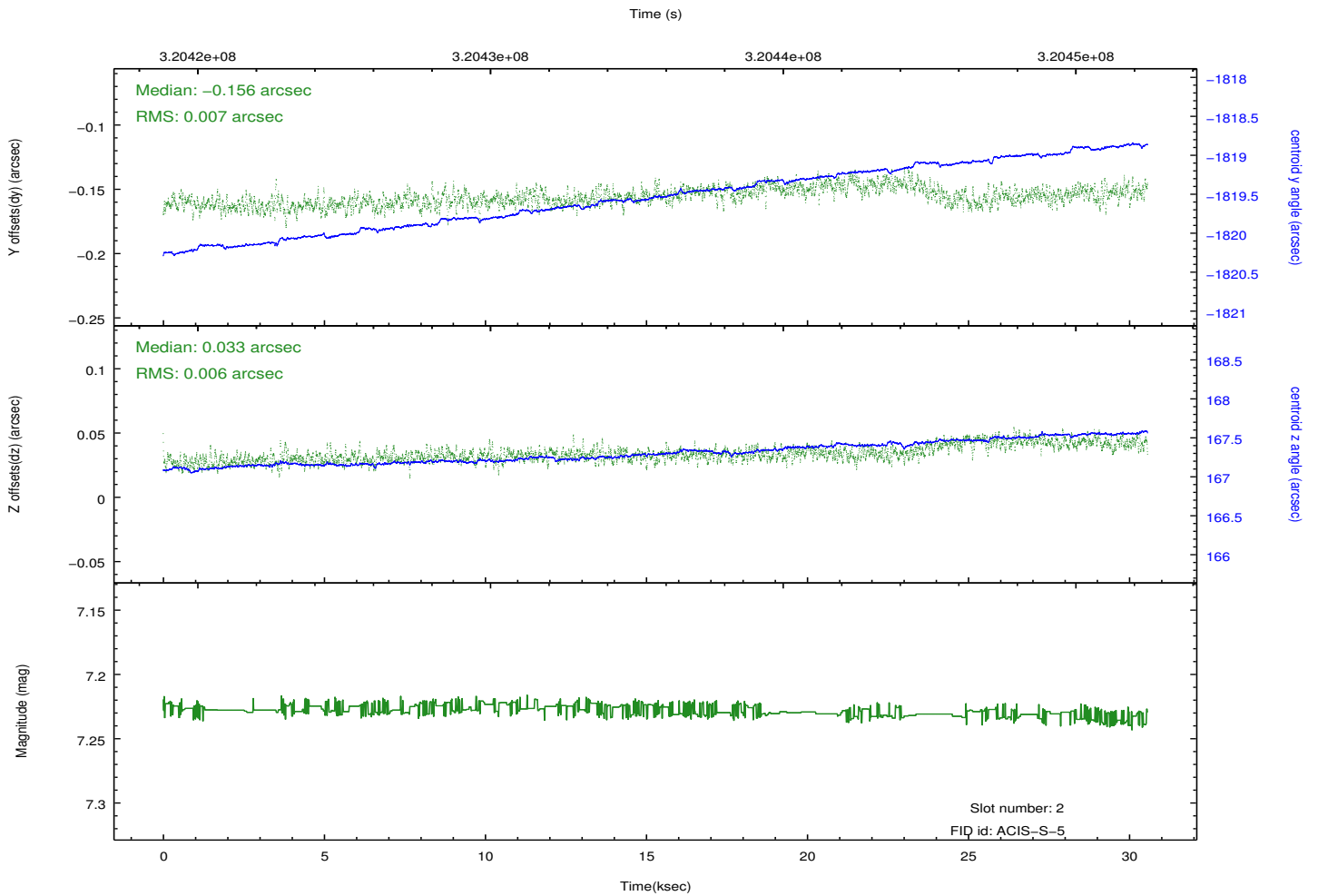
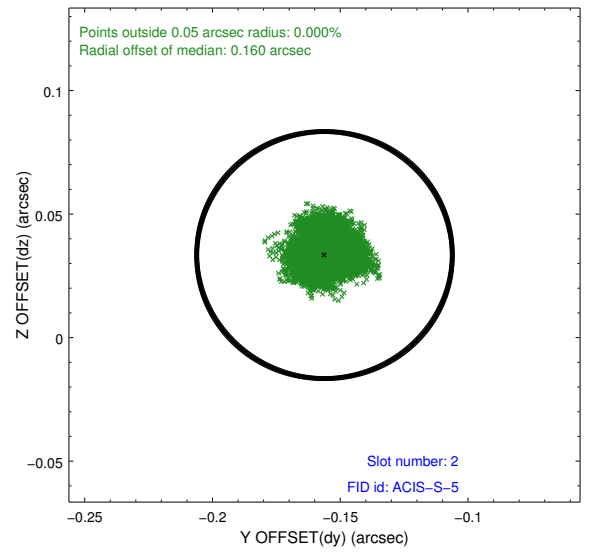
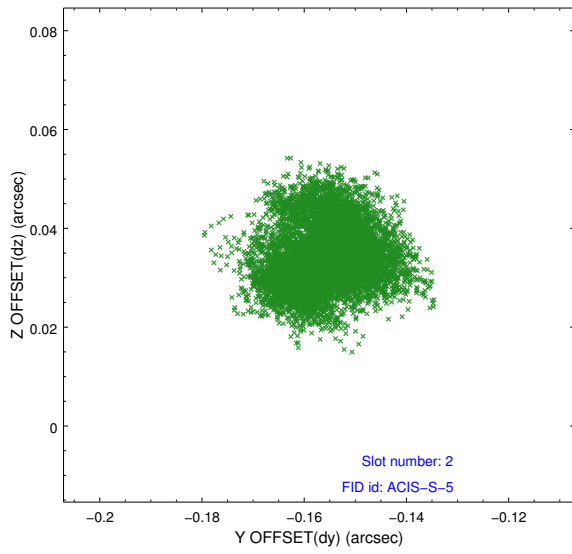
2.5.1 Slot 0



2.5.2 Slot 1



2.5.3 Slot 2



A Summary

A.1 Status

V&V Scientist	Jen Lauer
V&V Date (YYYY-MM-DD)	2012.05.13
V&V Edition	1
V&V Disposition and Status	OK
V&V Charge Time	29.7023998

A.2 Comments