

V&V Reference Report

L2 ASCDS Version : 8.4.5

Observation 9372 - L2 Version 2
Chandra X-Ray Center

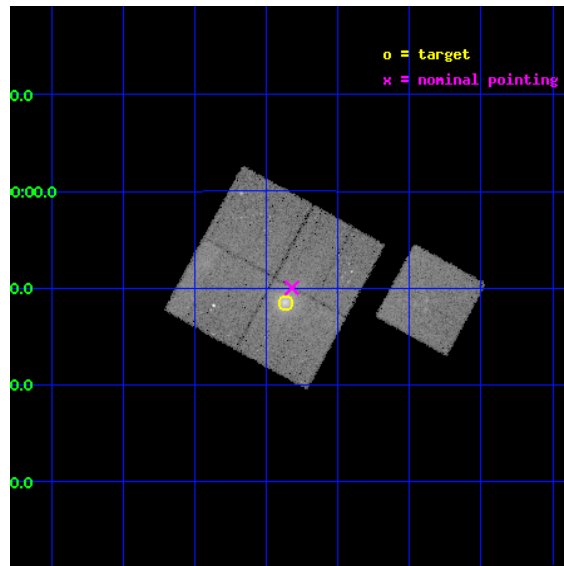
L2 Processing Date : Jul 10 2012

Contents

1	Front	2
2	OBI	3
2.1	OBI	3
2.1.1	Images	3
2.1.2	Bias	3
2.1.3	Parameters	4
2.1.4	Events	4
2.2	Compared Parameters	5
2.3	Aspect	6
2.4	Star Slots	9
2.4.1	Slot 3	9
2.4.2	Slot 4	10
2.4.3	Slot 5	11
2.4.4	Slot 6	12
2.4.5	Slot 7	13
2.5	FID Slots	14
2.5.1	Slot 0	14
2.5.2	Slot 1	15
2.5.3	Slot 2	16
A	Summary	17
A.1	Status	17
A.2	Comments	17

1 Front

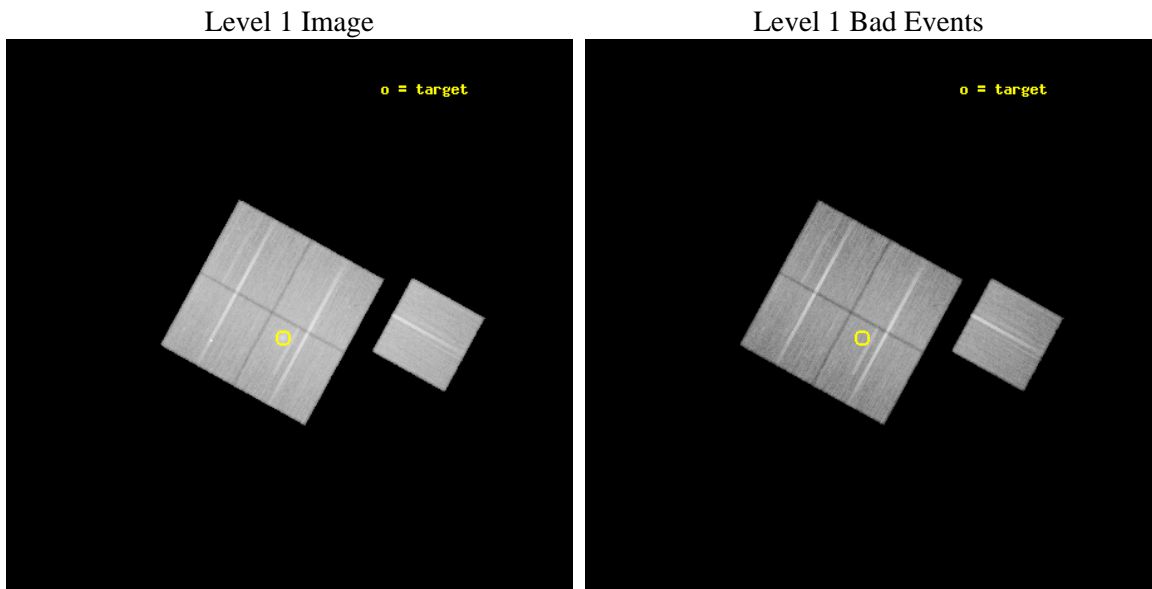
seq_num	800709	Sequence number
obs_id	9372	Observation id
title	Probing Dark Energy with Relaxed Galaxy Clusters	Proposal title
observer	Prof. Steven Allen	Principal investigator
object	Abell 2537	Source name
dtycle	0	
cycle	P	events from which exps? Prim/Second/Both
ra_targ	347.092083	Observer's specified target RA [deg]
dec_targ	-2.191417	Observer's specified target Dec [deg]
ra_nom	347.08035727147	Nominal RA [deg]
dec_nom	-2.1662585209139	Nominal Dec [deg]
roll_nom	118.78358727808	Nominal Roll [deg]
revision	2	Processing version of data
ontime	39016.35903132	Sum of GTIs [s]
liveltime	38506.58157715	Livetime [s]
ontime0	39019.376901567	Sum of GTIs [s]
ontime1	39016.276981115	Sum of GTIs [s]
ontime2	39019.459011436	Sum of GTIs [s]
ontime3	39016.35903132	Sum of GTIs [s]
ontime6	39022.476891756	Sum of GTIs [s]
l2events	149409	Number of level 2 events



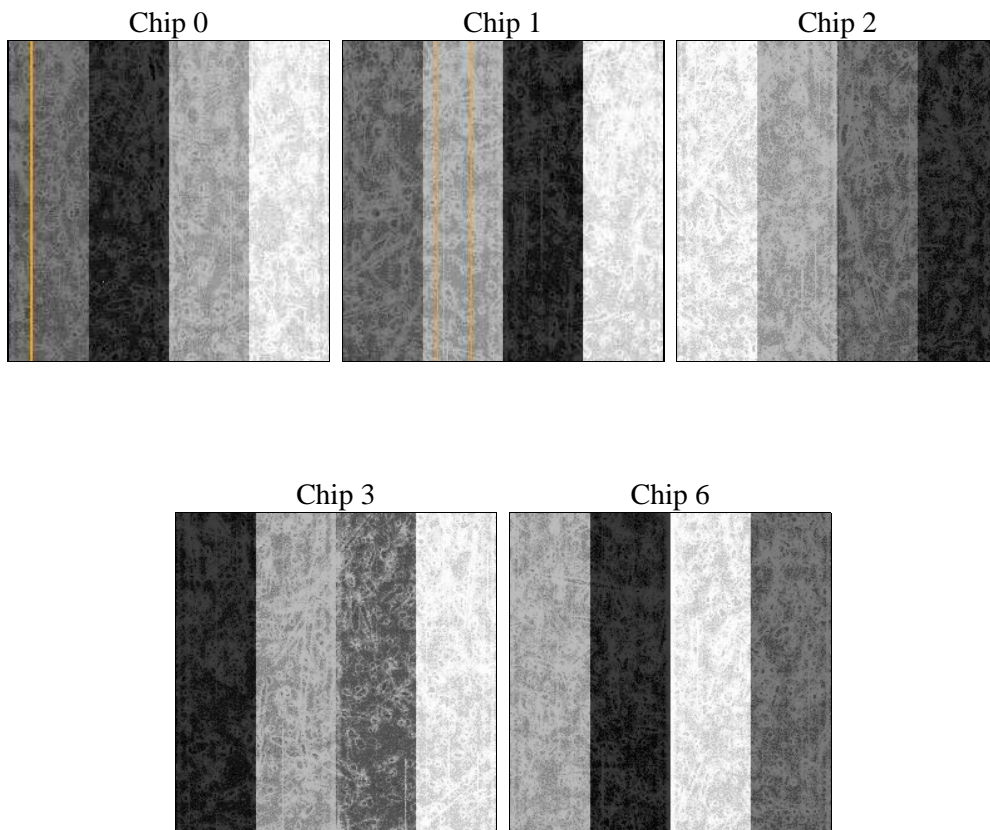
2 OBI

2.1 OBI

2.1.1 Images



2.1.2 Bias



2.1.3 Parameters

obi_num	0	Obi number	sched_exp_time	39253.353000	[s] Scheduled observation exposure time
ascdsver	8.4.5	Processing system revision	ontime	39016.35903132	Sum of GTIs [s]
caldbver	4.5.0	 	ontime0	39019.376901567	Sum of GTIs [s]
date	2012-07-10T20:55:57	Date and time of file creation	ontime1	39016.276981115	Sum of GTIs [s]
revision	2	Processing version of data	ontime2	39019.459011436	Sum of GTIs [s]
			ontime3	39016.35903132	Sum of GTIs [s]
			ontime6	39022.476891756	Sum of GTIs [s]
			l1events	1562752	Number of level 1 events

2.1.4 Events

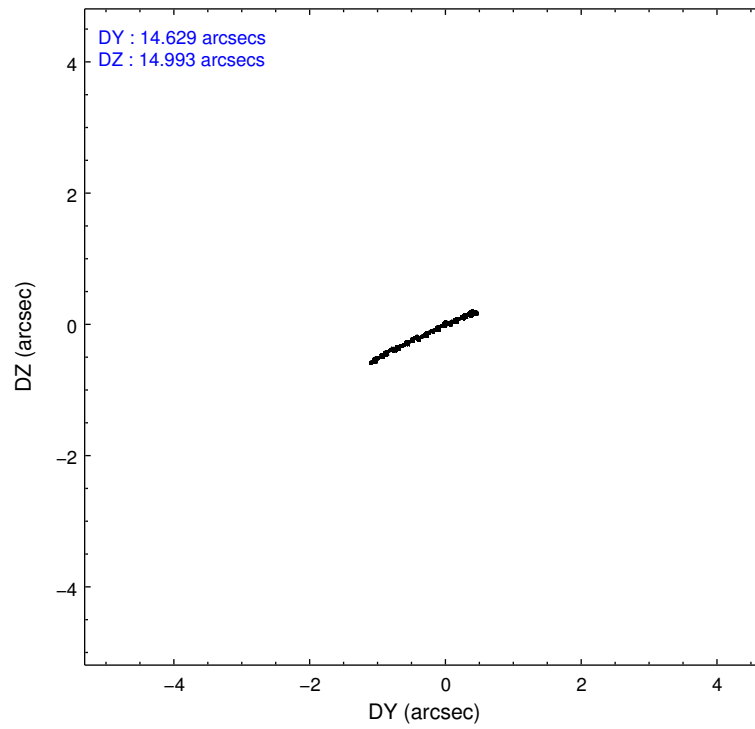
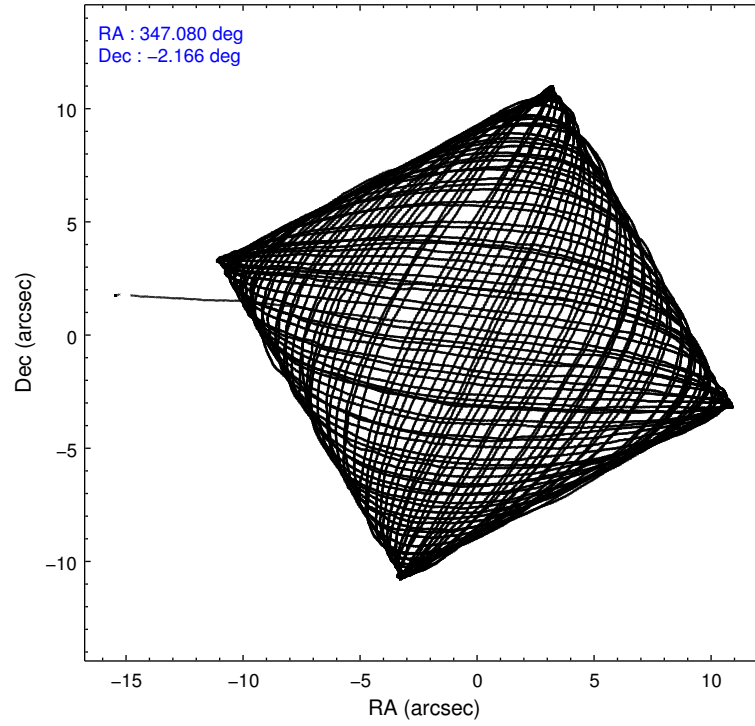
	ccd 0	ccd 1	ccd 2	ccd 3	ccd 6
level 1 events	289179	296590	335857	321816	319310
rejected events	257125	259080	303443	279478	286551
rejected %	88%	87%	90%	86%	89%

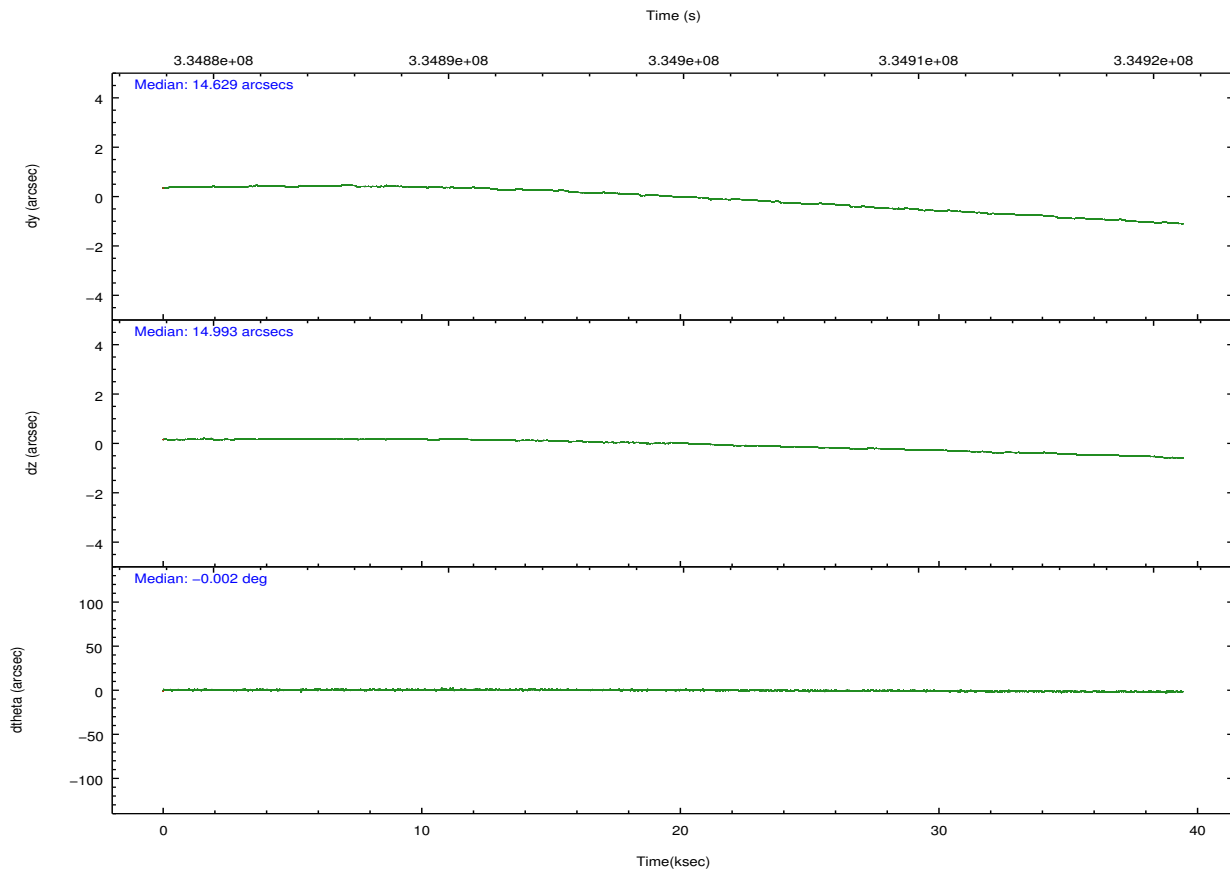
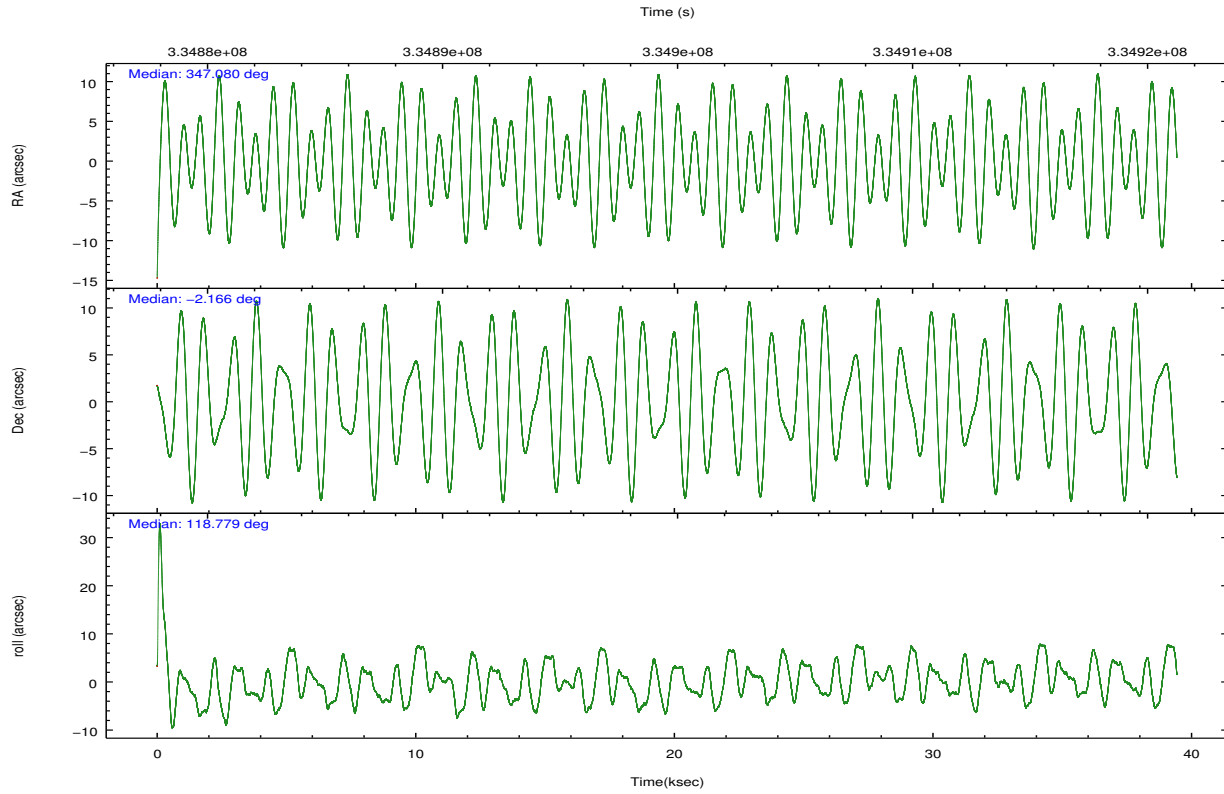
	ccd 0	ccd 1	ccd 2	ccd 3	ccd 6
grade 0 events	11152	14566	12154	20664	11570
	3%	4%	3%	6%	3%
grade 1 events	170	206	188	256	144
	0%	0%	0%	0%	0%
grade 2 events	7937	8178	7604	7924	7125
	2%	2%	2%	2%	2%
grade 3 events	3585	3750	3353	3711	3566
	1%	1%	0%	1%	1%
grade 4 events	3318	3693	3440	3630	3498
	1%	1%	1%	1%	1%
grade 5 events	11163	12218	10404	13152	12753
	3%	4%	3%	4%	3%
grade 6 events	6069	7325	5871	6410	7003
	2%	2%	1%	1%	2%
grade 7 events	245785	246654	292843	266069	273651
	84%	83%	87%	82%	85%

2.2 Compared Parameters

Parameter	Planned	Actual	Parameter	Planned	Actual
Instrument	ACIS	ACIS	Obspar format version number	7	7
Detector	ACIS-01236	ACIS-01236	Obspar file type	PREDICTED	ACTUAL
Grating	NONE	NONE	Obspar update status	NONE	UPDATED
Data mode	VFAINT	VFAINT	CCD I0 on	Y	Y
Observation mode	POINTING	POINTING	CCD I1 on	Y	Y
[deg] Pointing RA	347.103932	347.0803572714681	CCD I2 on	Y	Y
[deg] Pointing Dec	-2.180414	-2.166258520913942	CCD I3 on	Y	Y
[deg] Pointing Roll	118.575800	118.7835872780776	CCD S0 on	N	N
[mm] SIM focus pos	-0.782348	-0.7809083437167272	CCD S1 on	N	N
[mm] SIM defocus	0	0.001439871863259334	CCD S2 on	O1	Y
[mm] SIM translation stage pos	-229.442463	-229.4438428438578	CCD S3 on	N	N
[mm] SIM translation stage offset	-4.15	-4.148610159071865	CCD S4 on	N	N
[s] Observation start time (MET)	334880021.184000	334879100.52047	CCD S5 on	N	N
Observation start date	2008-08-11T22:12:36	2008-08-11T21:58:20	Number of optional ACIS chips dropped	0	0
[s] Observation end time (MET)	334919274.184000	334919497.30995	On-chip summing requested	N	N
Observation end date	2008-08-12T09:06:49	2008-08-12T09:11:37	Subarray requested	NONE	NONE
Read mode	TIMED	TIMED	Alternating exposures requested	N	N
			[s] Primary exposure time	0.000000	3.1

2.3 Aspect



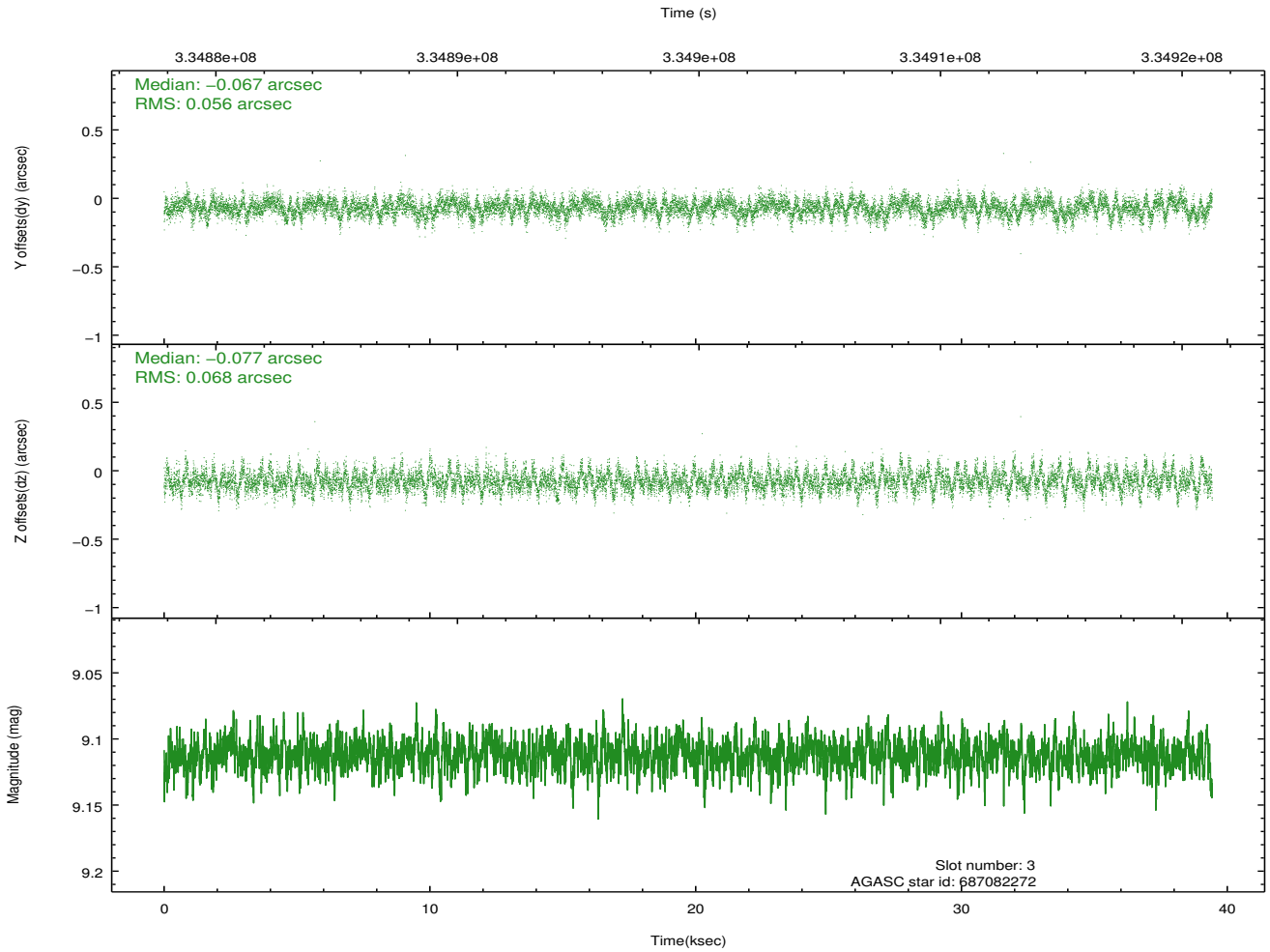
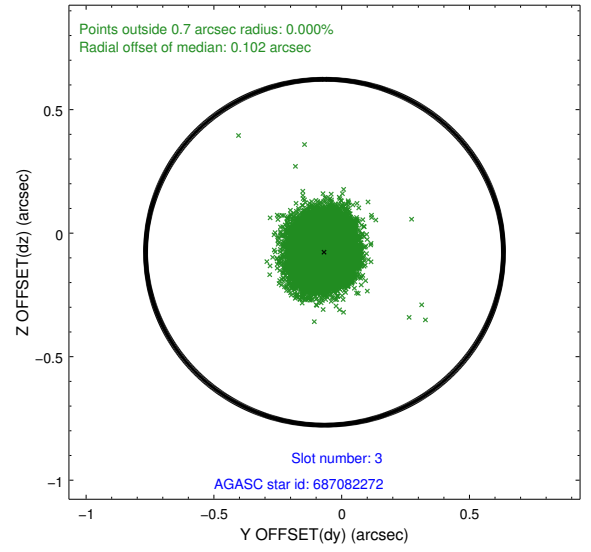
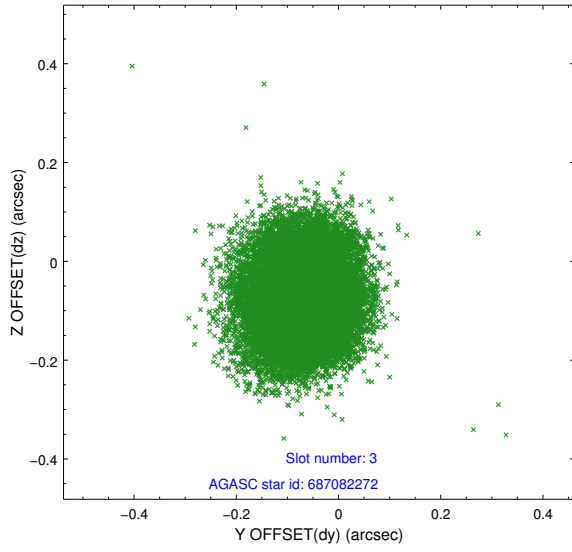


Slot Statistics

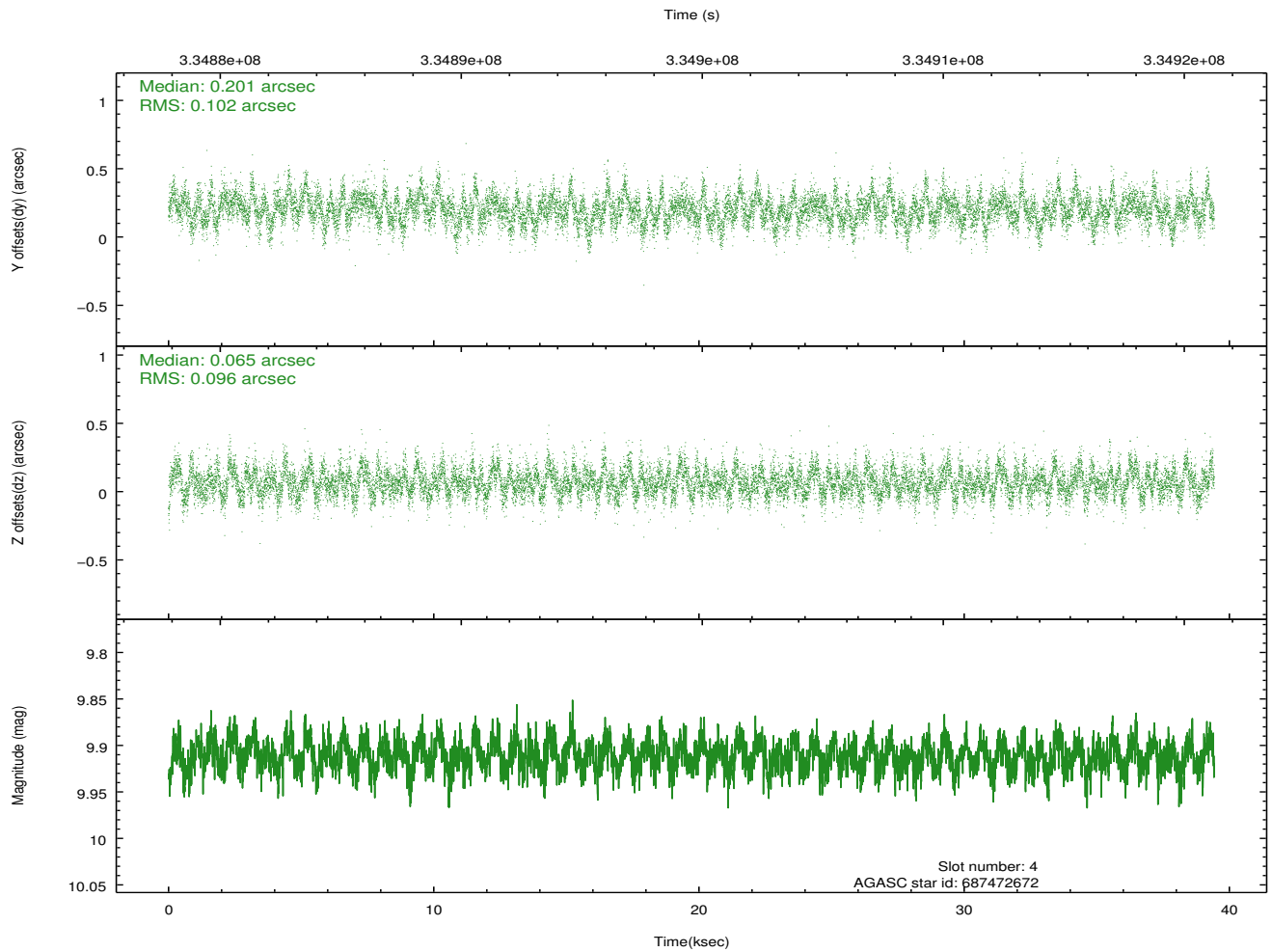
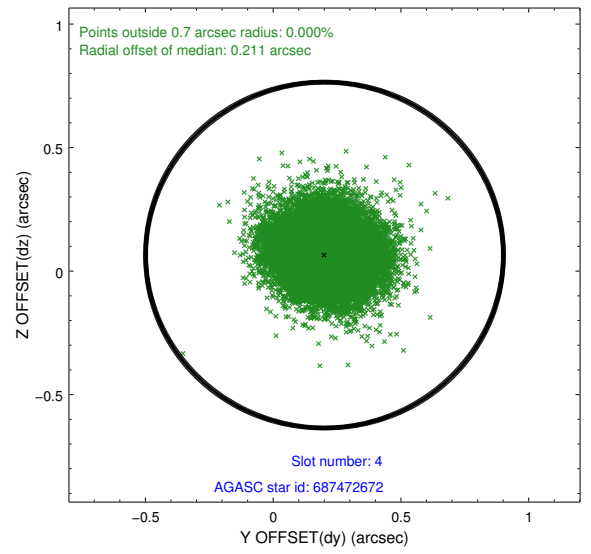
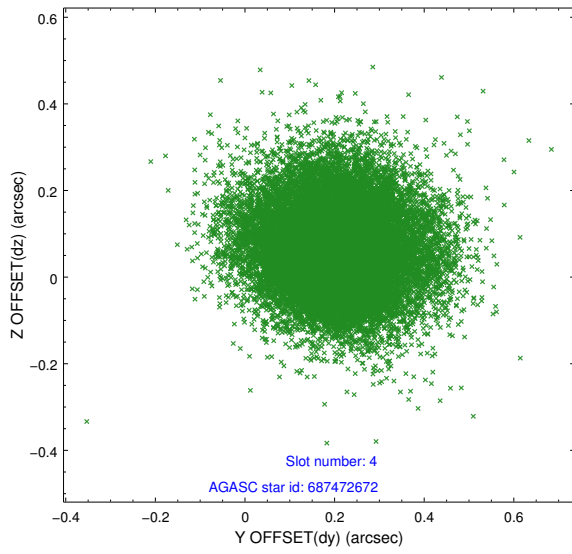
slot	status	id	mag	n_pts	med_dy	med_dz	dr1	dr2	ra	dec	mean_y	mean_z
0	FID	ACIS-I-1	7.05	9618	0.076	-0.009	0.013	0.024	0.000000	0.000000	924.95	-923.64
1	FID	ACIS-I-5	7.05	9617	-0.238	0.079	0.013	0.020	0.000000	0.000000	-1823.46	973.91
2	FID	ACIS-I-6	7.05	9618	0.072	0.003	0.012	0.019	0.000000	0.000000	390.47	1618.37
3	GUIDE	687082272	9.11	19212	-0.067	-0.077	0.094	0.154	346.918862	-2.105440	555.51	456.03
4	GUIDE	687472672	9.91	19211	0.201	0.065	0.148	0.242	347.245092	-2.824282	-2279.06	662.77
5	GUIDE	687475208	9.30	19223	0.098	-0.040	0.109	0.171	347.266885	-2.550484	-1450.90	120.85
6	GUIDE	687082408	10.23	19173	-0.081	-0.245	0.231	0.349	346.362100	-2.074282	1611.40	2161.68
7	GUIDE	687088456	10.23	19134	-0.140	0.295	0.204	0.345	347.066996	-1.493322	2235.77	-1066.41

2.4 Star Slots

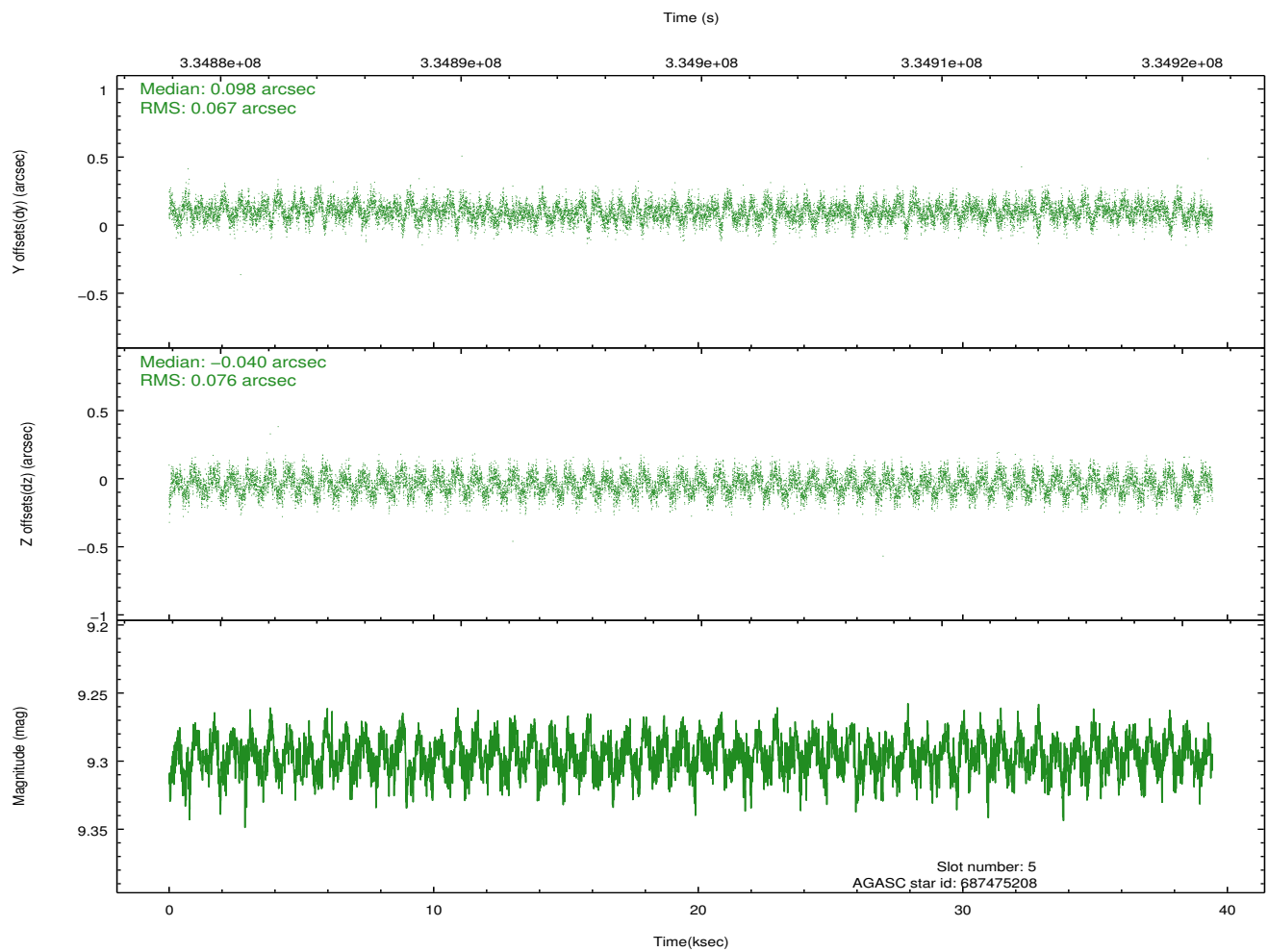
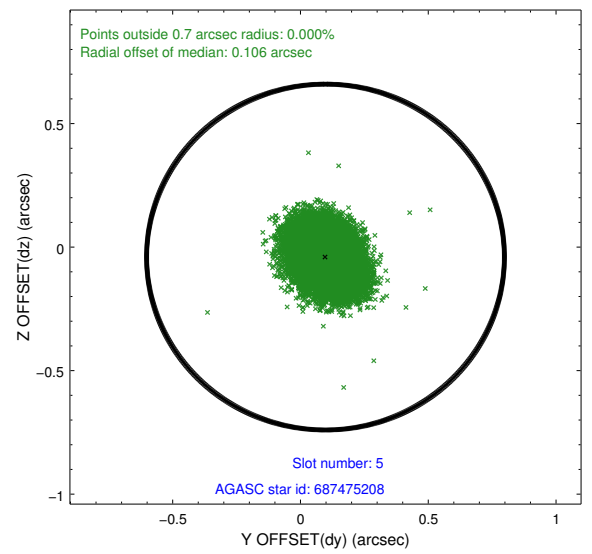
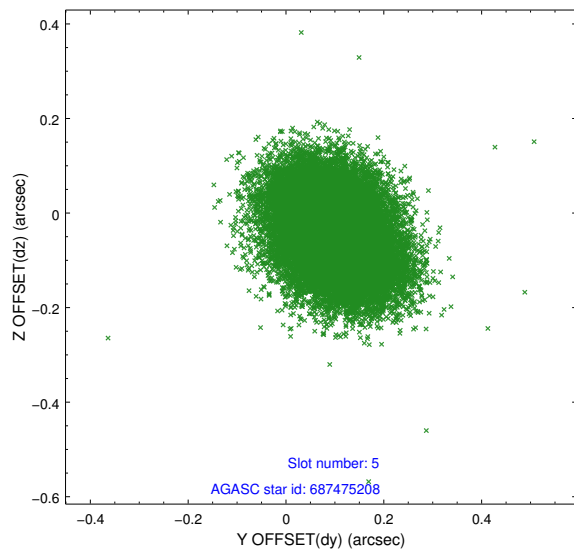
2.4.1 Slot 3



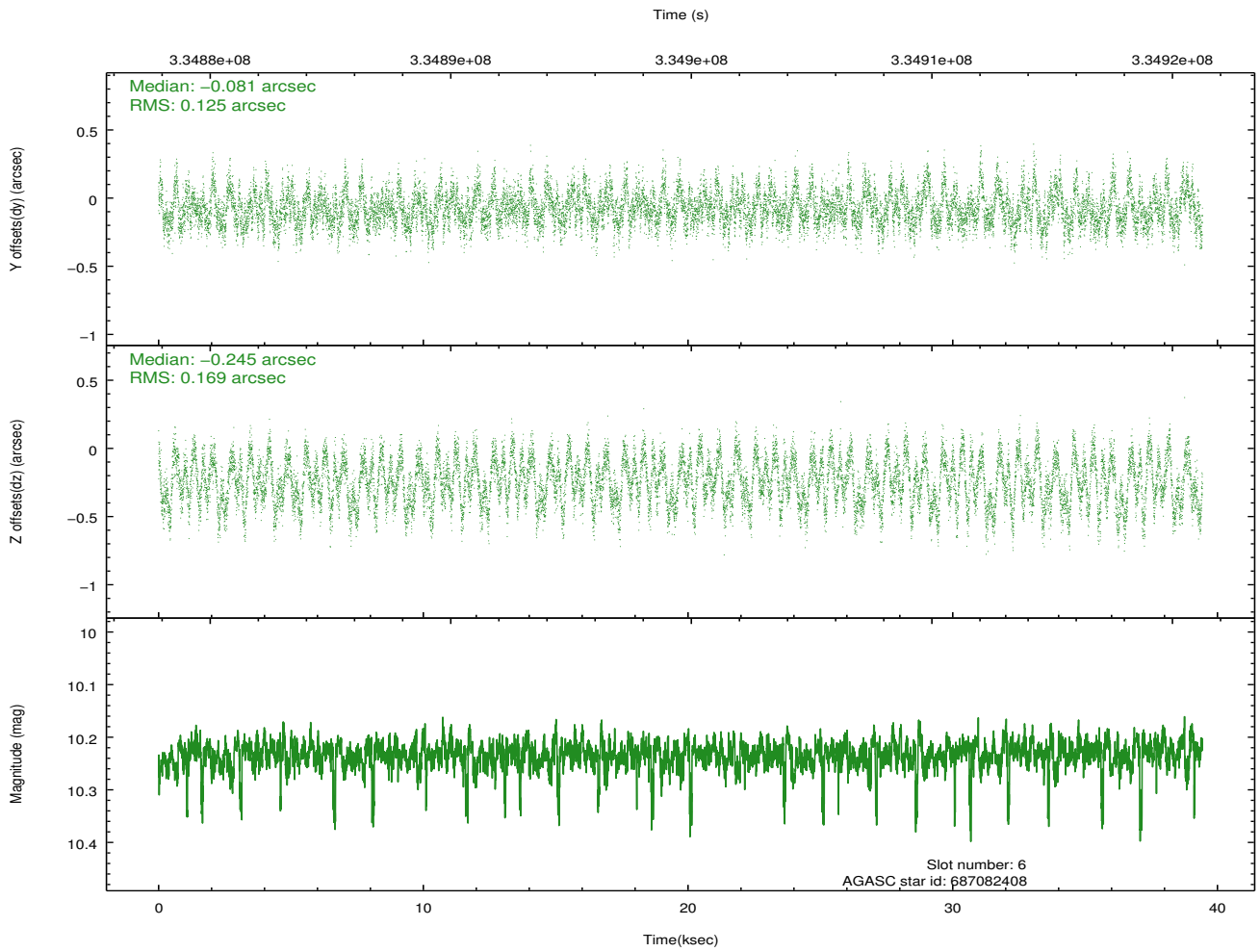
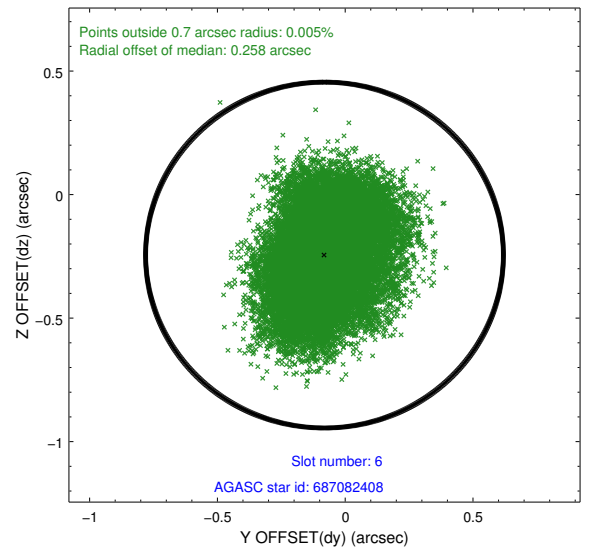
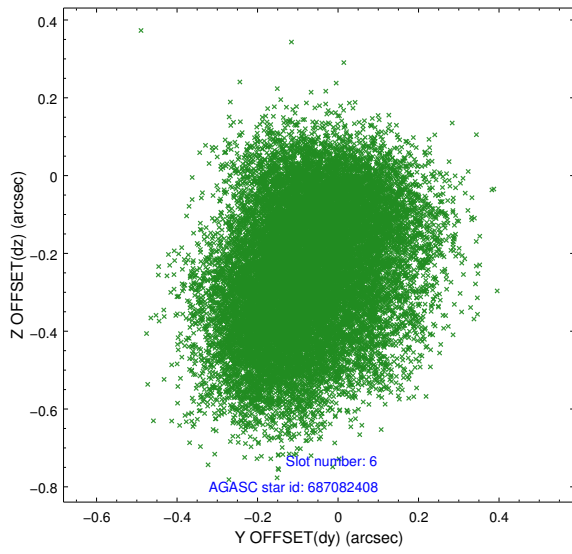
2.4.2 Slot 4



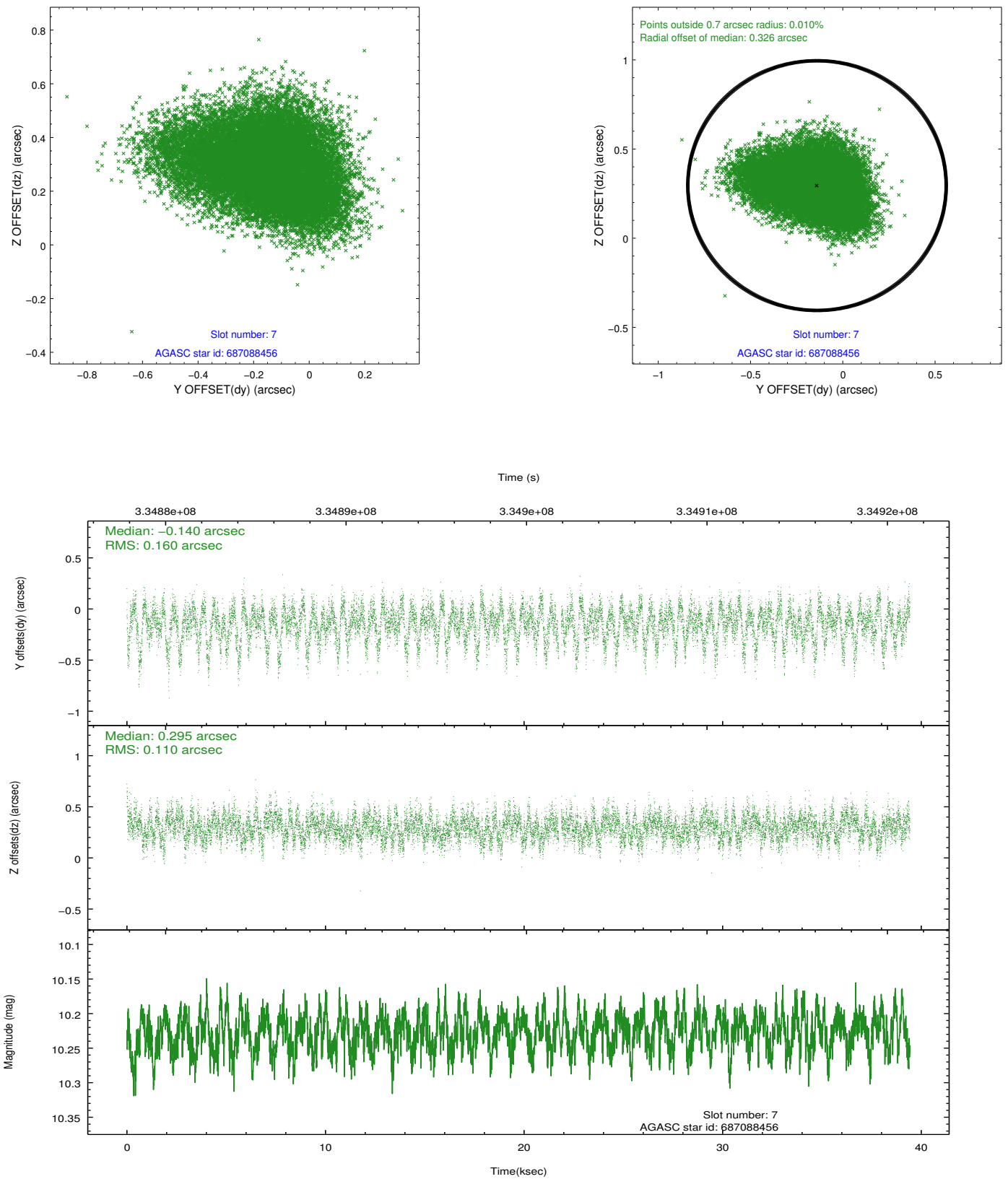
2.4.3 Slot 5



2.4.4 Slot 6

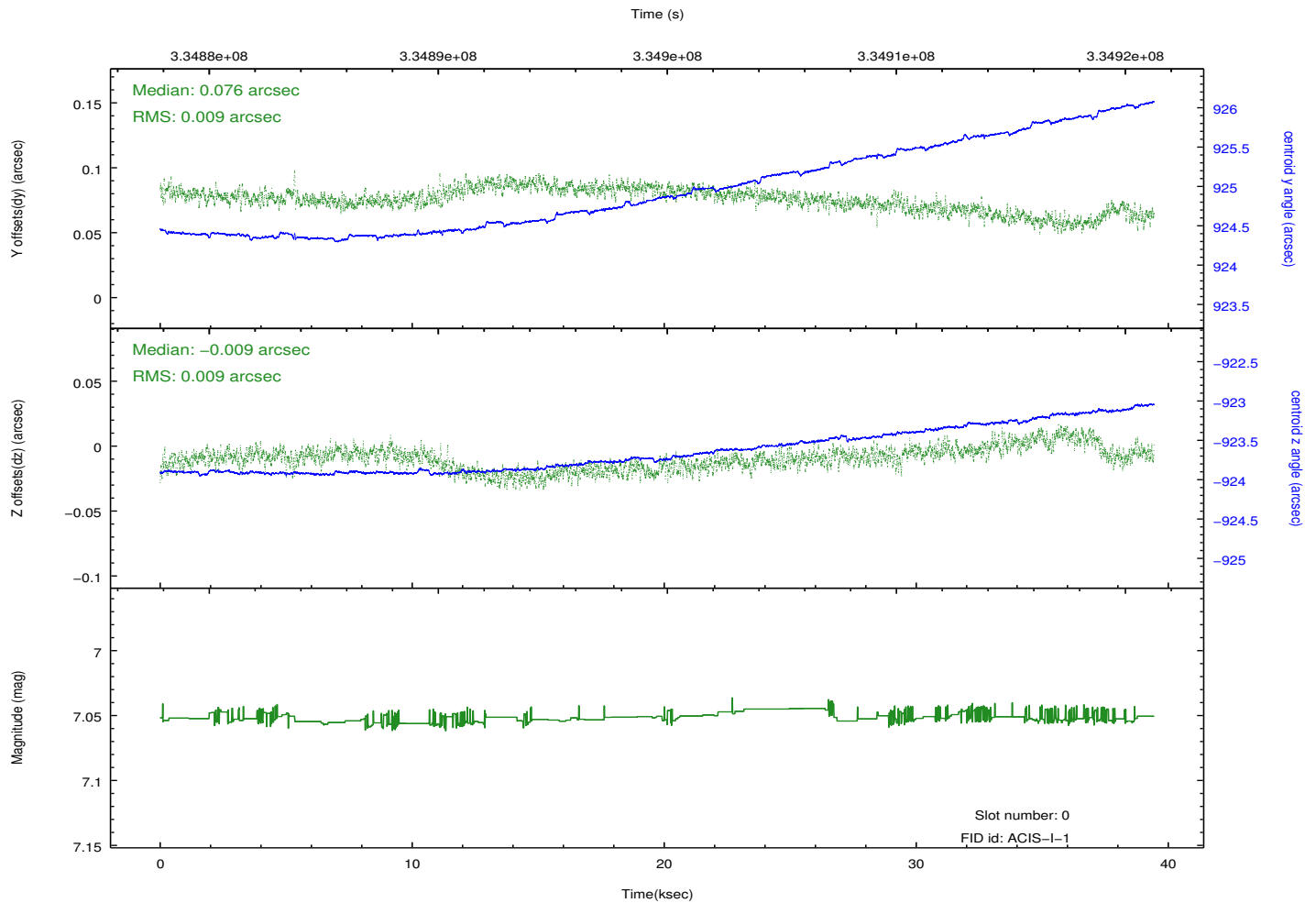
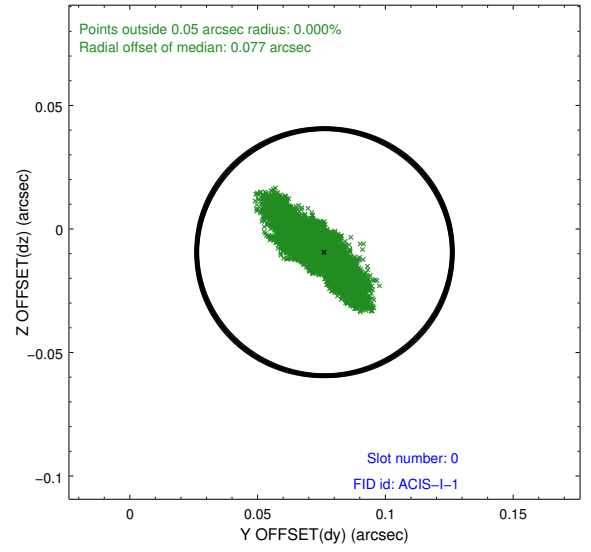
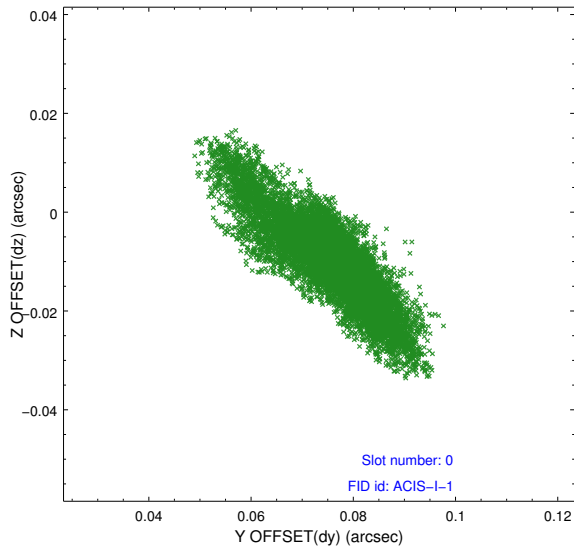


2.4.5 Slot 7

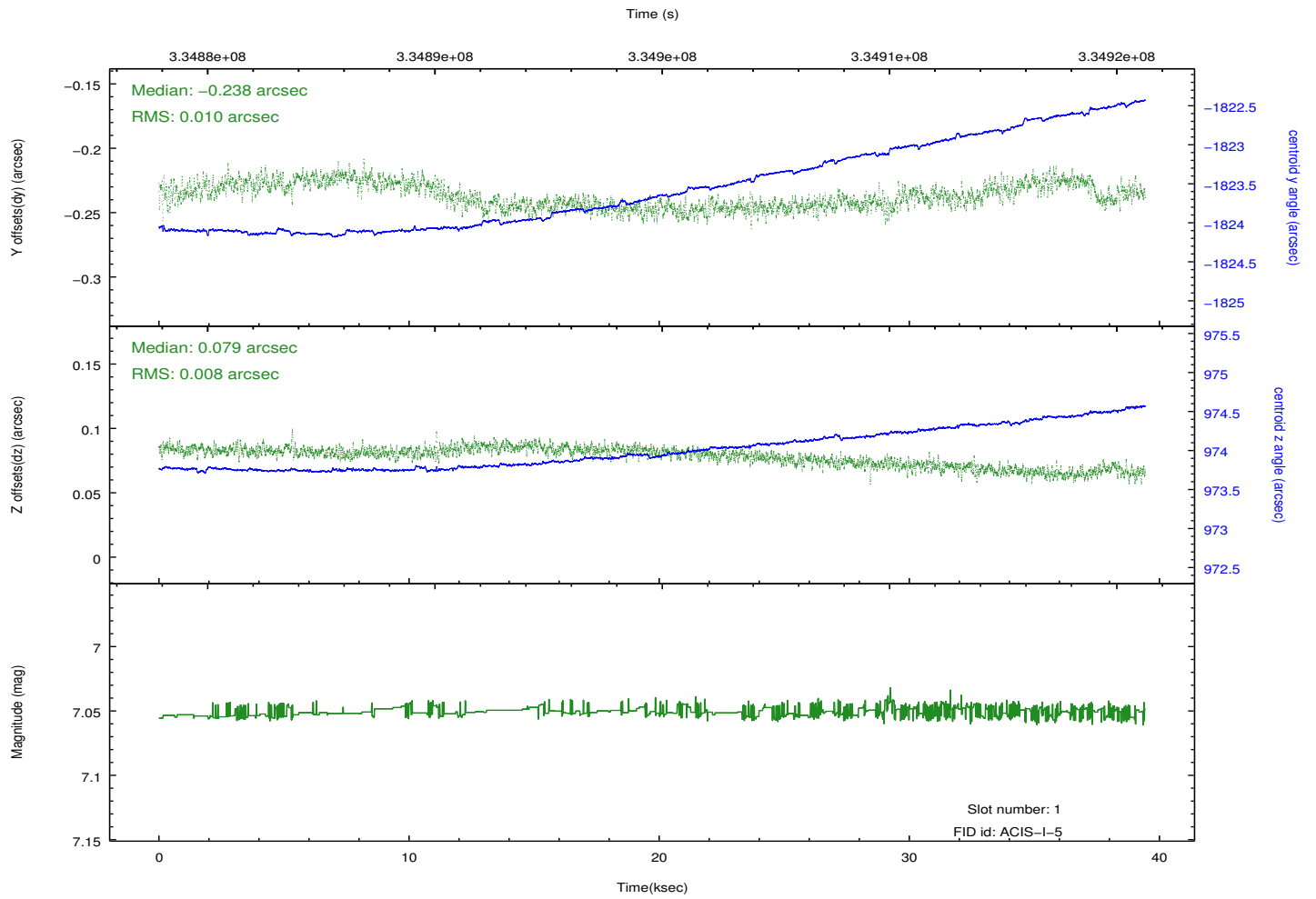
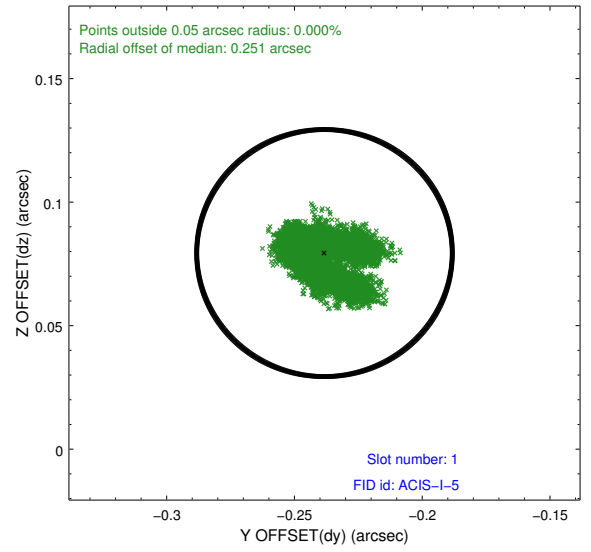
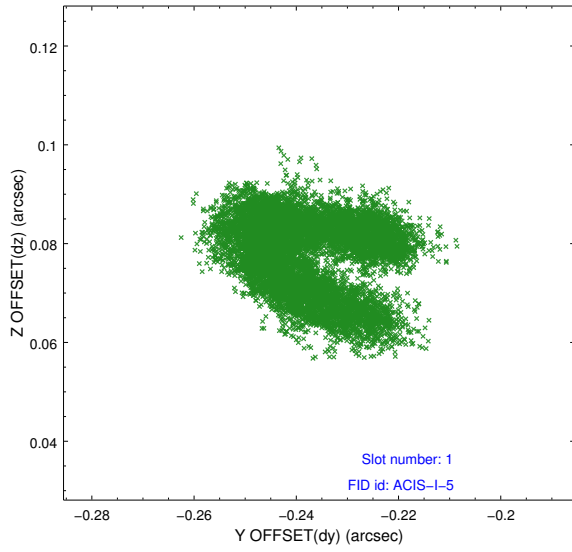


2.5 FID Slots

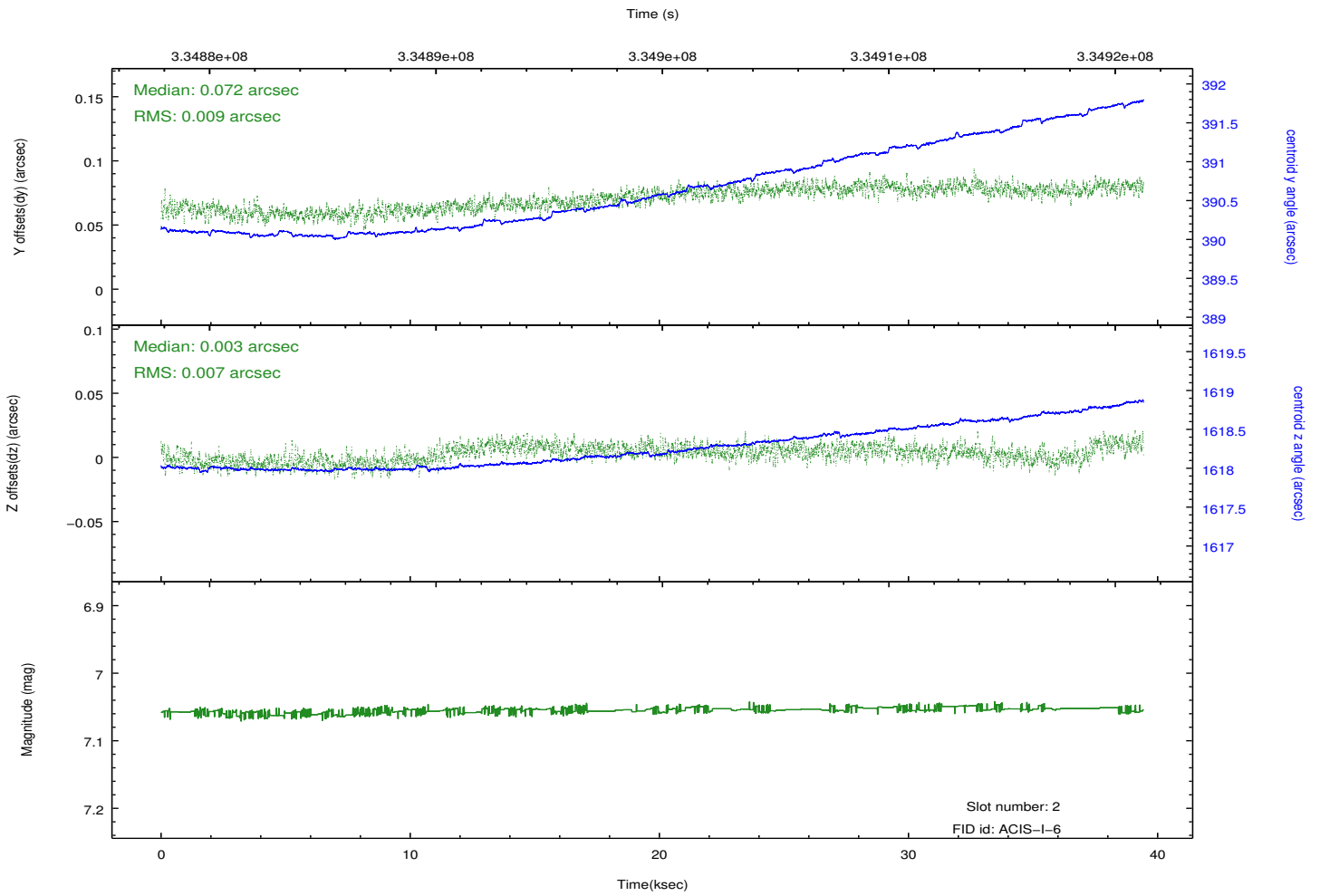
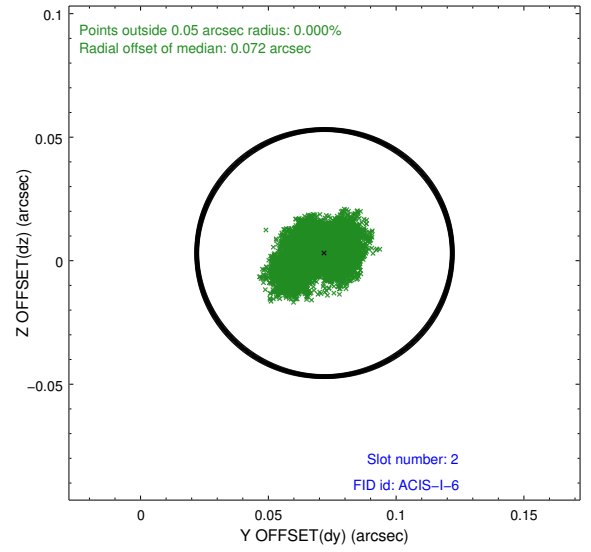
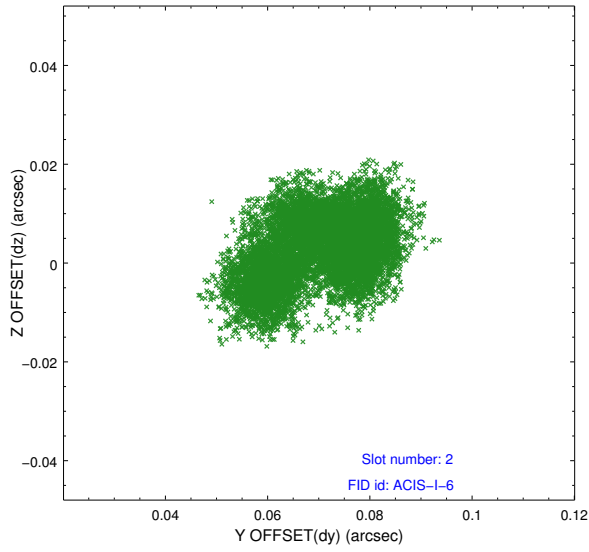
2.5.1 Slot 0



2.5.2 Slot 1



2.5.3 Slot 2



A Summary

A.1 Status

V&V Scientist	Beth Sundheim
V&V Date (YYYY-MM-DD)	2012.07.18
V&V Edition	1
V&V Disposition and Status	OK
V&V Charge Time	39.0164772

A.2 Comments