

# V&V Reference Report

## L2 ASCDS Version : 8.4.4

Observation 9402 - L2 Version 2  
Chandra X-Ray Center

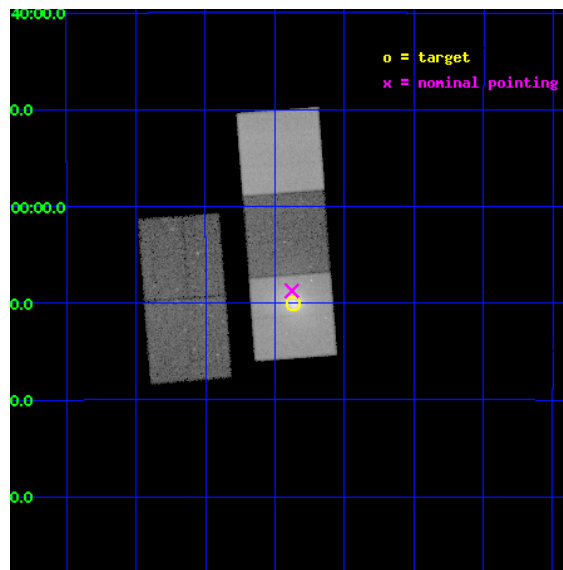
L2 Processing Date : May 12 2012

## Contents

<b>1</b>	<b>Front</b>	<b>2</b>
<b>2</b>	<b>OBI</b>	<b>3</b>
2.1	OBI . . . . .	3
2.1.1	Images . . . . .	3
2.1.2	Bias . . . . .	3
2.1.3	Parameters . . . . .	4
2.1.4	Events . . . . .	4
2.2	Compared Parameters . . . . .	5
2.3	Aspect . . . . .	6
2.4	Star Slots . . . . .	9
2.4.1	Slot 3 . . . . .	9
2.4.2	Slot 4 . . . . .	10
2.4.3	Slot 5 . . . . .	11
2.4.4	Slot 6 . . . . .	12
2.4.5	Slot 7 . . . . .	13
2.5	FID Slots . . . . .	14
2.5.1	Slot 0 . . . . .	14
2.5.2	Slot 1 . . . . .	15
2.5.3	Slot 2 . . . . .	16
<b>A</b>	<b>Summary</b>	<b>17</b>
A.1	Status . . . . .	17
A.2	Comments . . . . .	17

# 1 Front

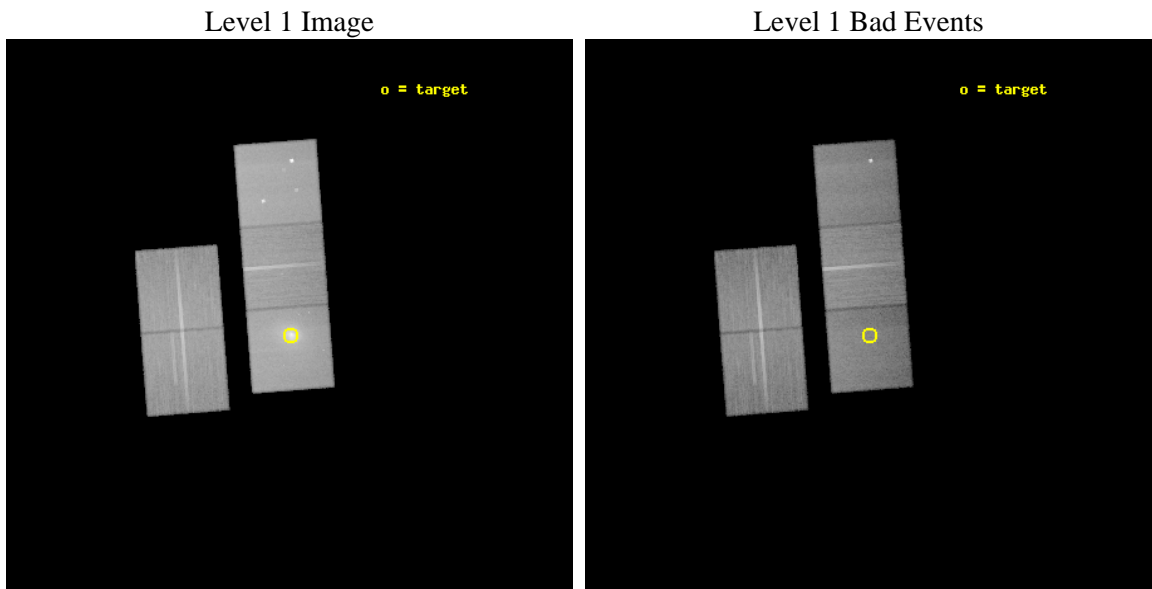
seq_num	800739	Sequence number
obs_id	9402	Observation id
title	The Link between optical nebulae and feedback in cluster cores	Pro
observer	Dr RODERICK JOHNSTONE	Principal investigator
object	RXCJ1558.3-1410	Source name
dtcycle	0	&#160
cycle	P	events from which exps? Prim/Second/Both
ra_targ	239.591204	Observer's specified target RA [deg]
dec_targ	-14.166314	Observer's specified target Dec [deg]
ra_nom	239.59455248121	Nominal RA [deg]
dec_nom	-14.145708676121	Nominal Dec [deg]
roll_nom	85.652207250116	Nominal Roll [deg]
revision	2	Processing version of data
ontime	40588.300312161	Sum of GTIs [s]
livetime	40057.984287911	Livetime [s]
ontime2	40582.018341243	Sum of GTIs [s]
ontime3	40585.159321904	Sum of GTIs [s]
ontime5	40588.300312161	Sum of GTIs [s]
ontime6	40585.159321904	Sum of GTIs [s]
ontime7	40588.300312161	Sum of GTIs [s]
l2events	569269	Number of level 2 events



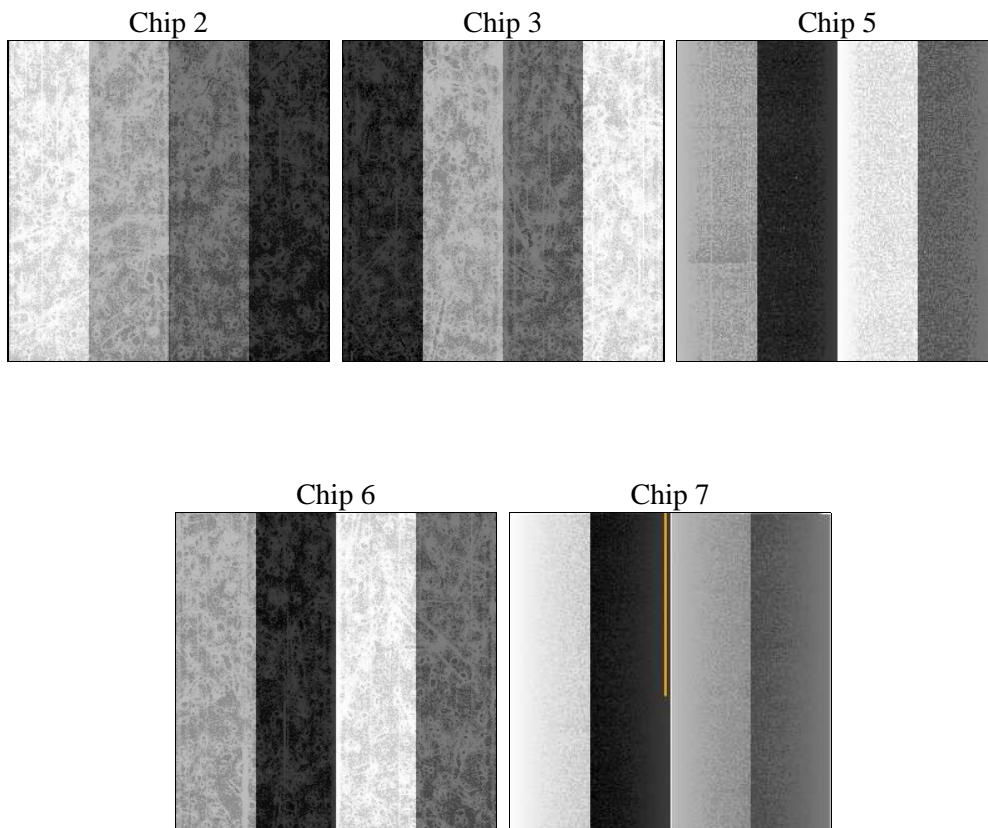
## 2 OBI

### 2.1 OBI

#### 2.1.1 Images



#### 2.1.2 Bias



### 2.1.3 Parameters

obi_num	0	Obi number	sched_exp_time	40467.534000	[s] Scheduled observation exposure time
ascdsver	8.4.4	Processing system revision	ontime	40588.300312161	Sum of GTIs [s]
caldsver	4.4.9	&#160	ontime2	40582.018341243	Sum of GTIs [s]
date	2012-05-12T15:51:52	Date and time of file creation	ontime3	40585.159321904	Sum of GTIs [s]
revision	2	Processing version of data	ontime5	40588.300312161	Sum of GTIs [s]
			ontime6	40585.159321904	Sum of GTIs [s]
			ontime7	40588.300312161	Sum of GTIs [s]
			l1events	1906806	Number of level 1 events

### 2.1.4 Events

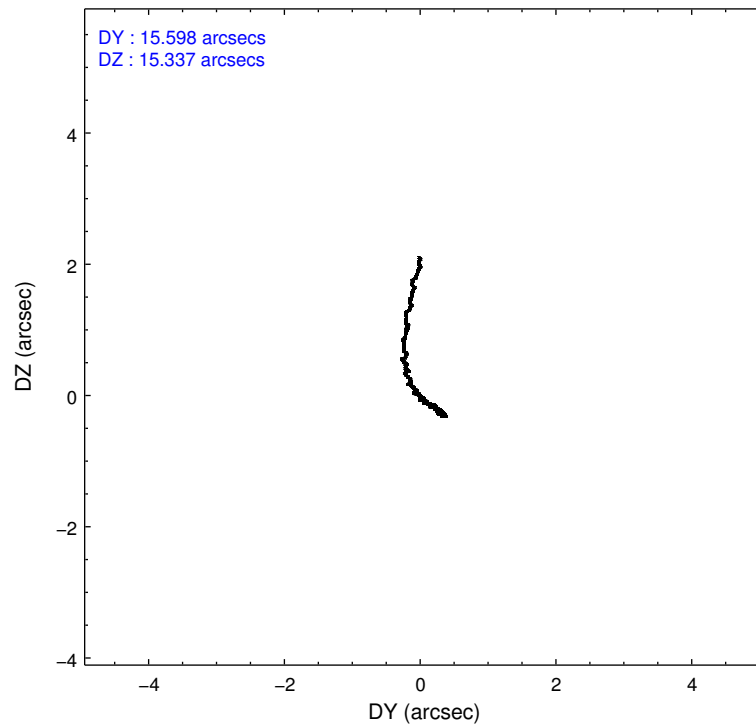
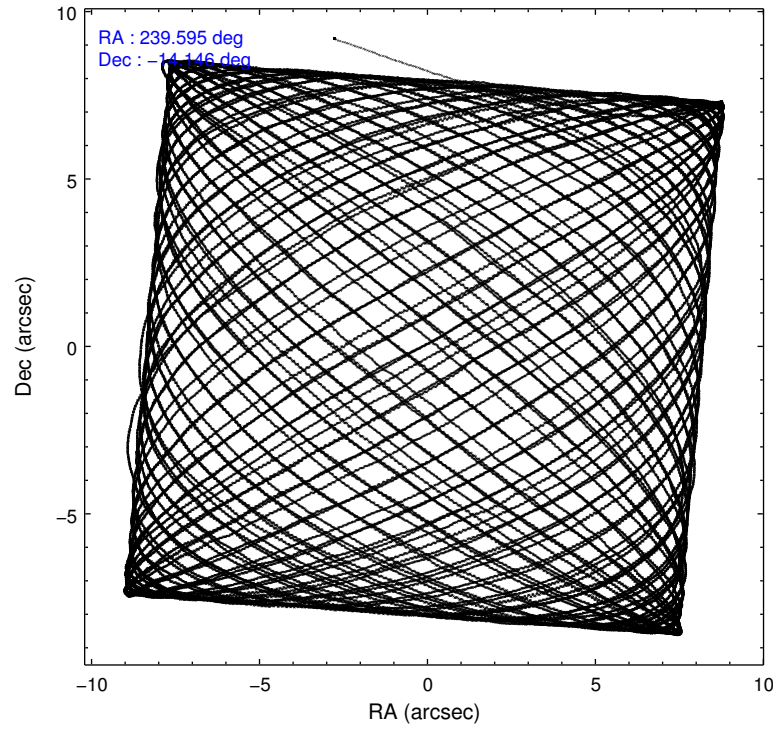
	ccd 2	ccd 3	ccd 5	ccd 6	ccd 7
level 1 events	326093	312369	461605	326511	480228
rejected events	293340	280632	235323	288601	203546
rejected %	89%	89%	50%	88%	42%

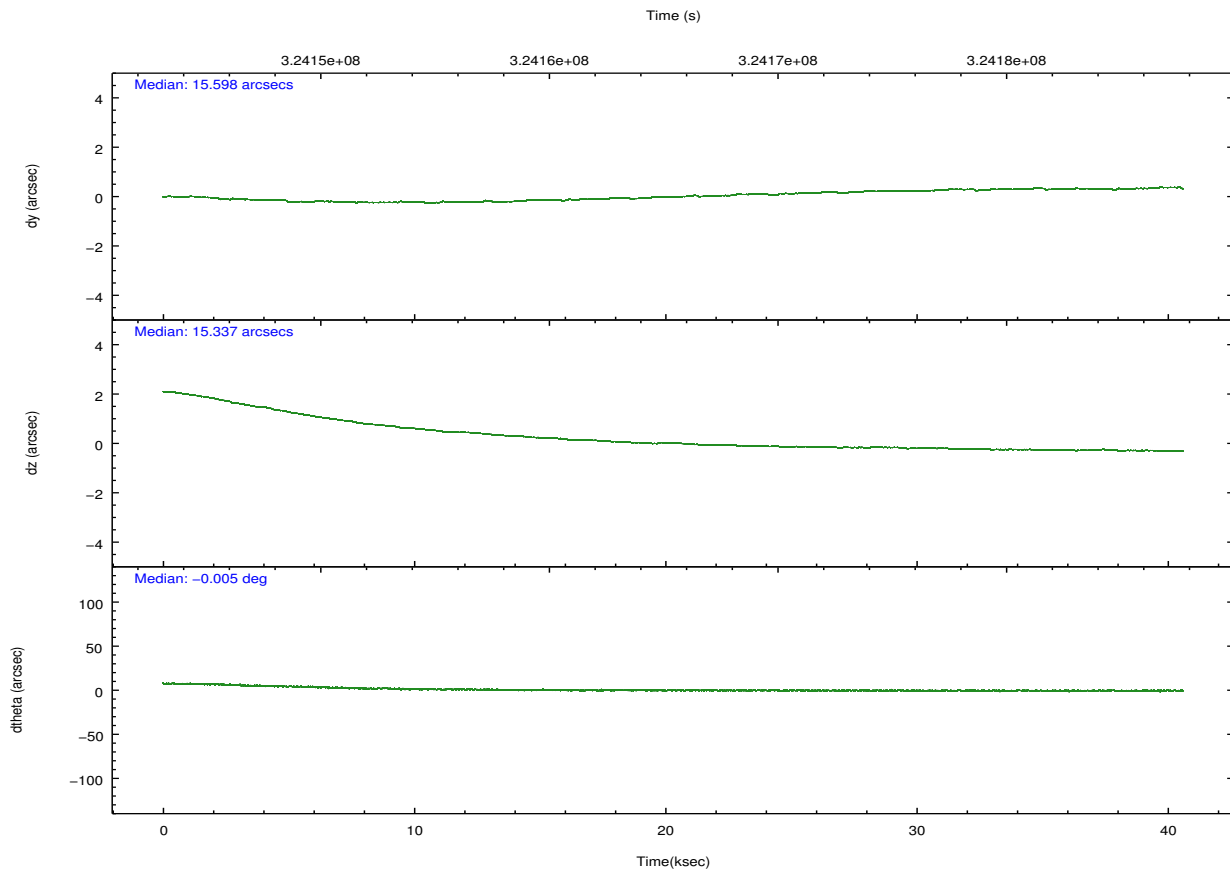
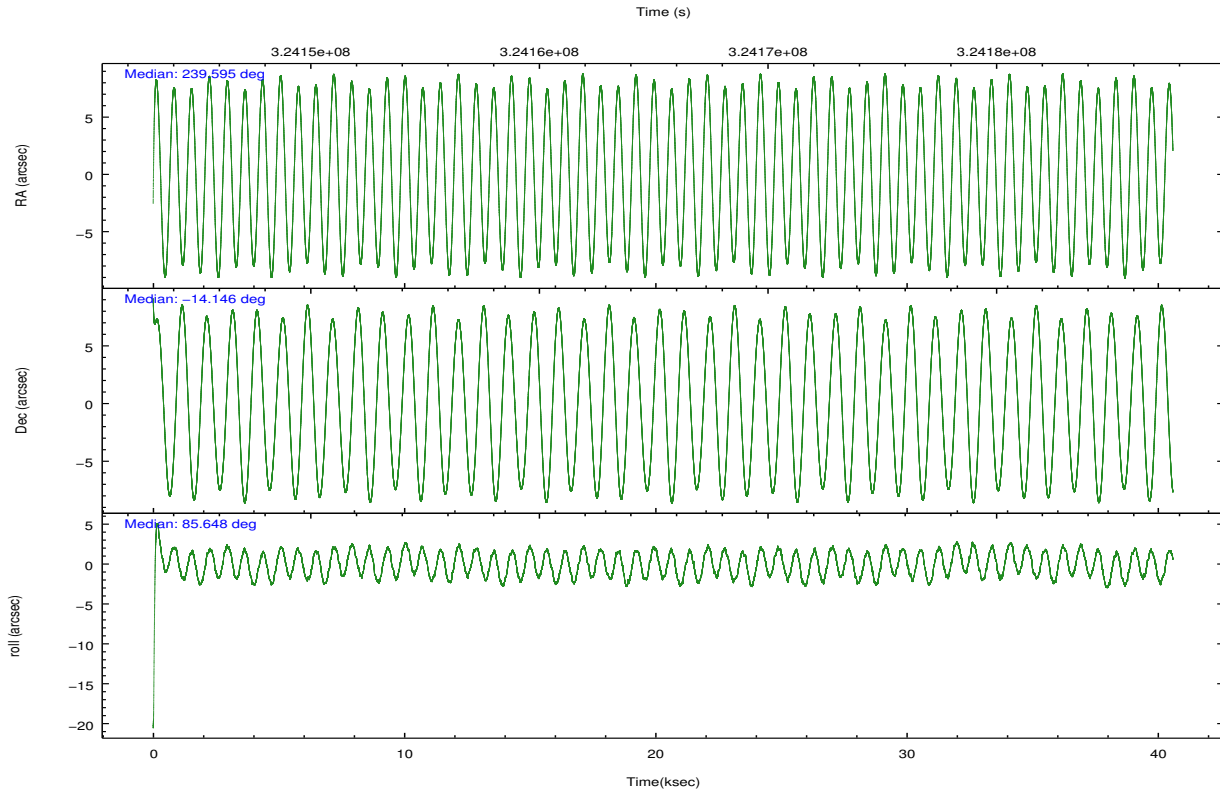
	ccd 2	ccd 3	ccd 5	ccd 6	ccd 7
grade 0 events	12682	12141	23321	15506	48166
	3%	3%	5%	4%	10%
grade 1 events	185	187	839	176	495
	0%	0%	0%	0%	0%
grade 2 events	7698	6875	68909	7880	63379
	2%	2%	14%	2%	13%
grade 3 events	3387	3548	10114	3779	28581
	1%	1%	2%	1%	5%
grade 4 events	3570	3434	8983	3676	28136
	1%	1%	1%	1%	5%
grade 5 events	10370	13288	36688	13086	39622
	3%	4%	7%	4%	8%
grade 6 events	5786	6083	117348	7450	110687
	1%	1%	25%	2%	23%
grade 7 events	282415	266813	195403	274958	161162
	86%	85%	42%	84%	33%

## 2.2 Compared Parameters

Parameter	Planned	Actual	Parameter	Planned	Actual
Instrument	ACIS	ACIS	Obspar format version number	7	7
Detector	ACIS-23567	ACIS-23567	Obspar file type	PREDICTED	ACTUAL
Grating	NONE	NONE	Obspar update status	NONE	UPDATED
Data mode	VFAINT	VFAINT	CCD I0 on	N	N
Observation mode	POINTING	POINTING	CCD I1 on	N	N
[deg] Pointing RA	239.607094	239.5945524812127	CCD I2 on	O1	Y
[deg] Pointing Dec	-14.170202	-14.1457086761214	CCD I3 on	O2	Y
[deg] Pointing Roll	85.498653	85.65220725011628	CCD S0 on	N	N
[mm] SIM focus pos	-0.684267	-0.6828225247311905	CCD S1 on	Y	Y
[mm] SIM defocus	0	0.001444936568705701	CCD S2 on	O3	Y
[mm] SIM translation stage pos	-190.132523	-190.1425803651734	CCD S3 on	Y	Y
[mm] SIM translation stage offset	0	0.01005778216563158	CCD S4 on	N	N
[s] Observation start time (MET)	324145234.184000	324144049.496	CCD S5 on	N	N
Observation start date	2008-04-09T16:19:29	2008-04-09T16:00:49	Number of optional ACIS chips dropped	0	0
[s] Observation end time (MET)	324185702.184000	324185924.33554	On-chip summing requested	N	N
Observation end date	2008-04-10T03:33:57	2008-04-10T03:38:44	Subarray requested	NONE	NONE
Read mode	TIMED	TIMED	Alternating exposures requested	N	N
			[s] Primary exposure time	0.000000	3.1

## 2.3 Aspect



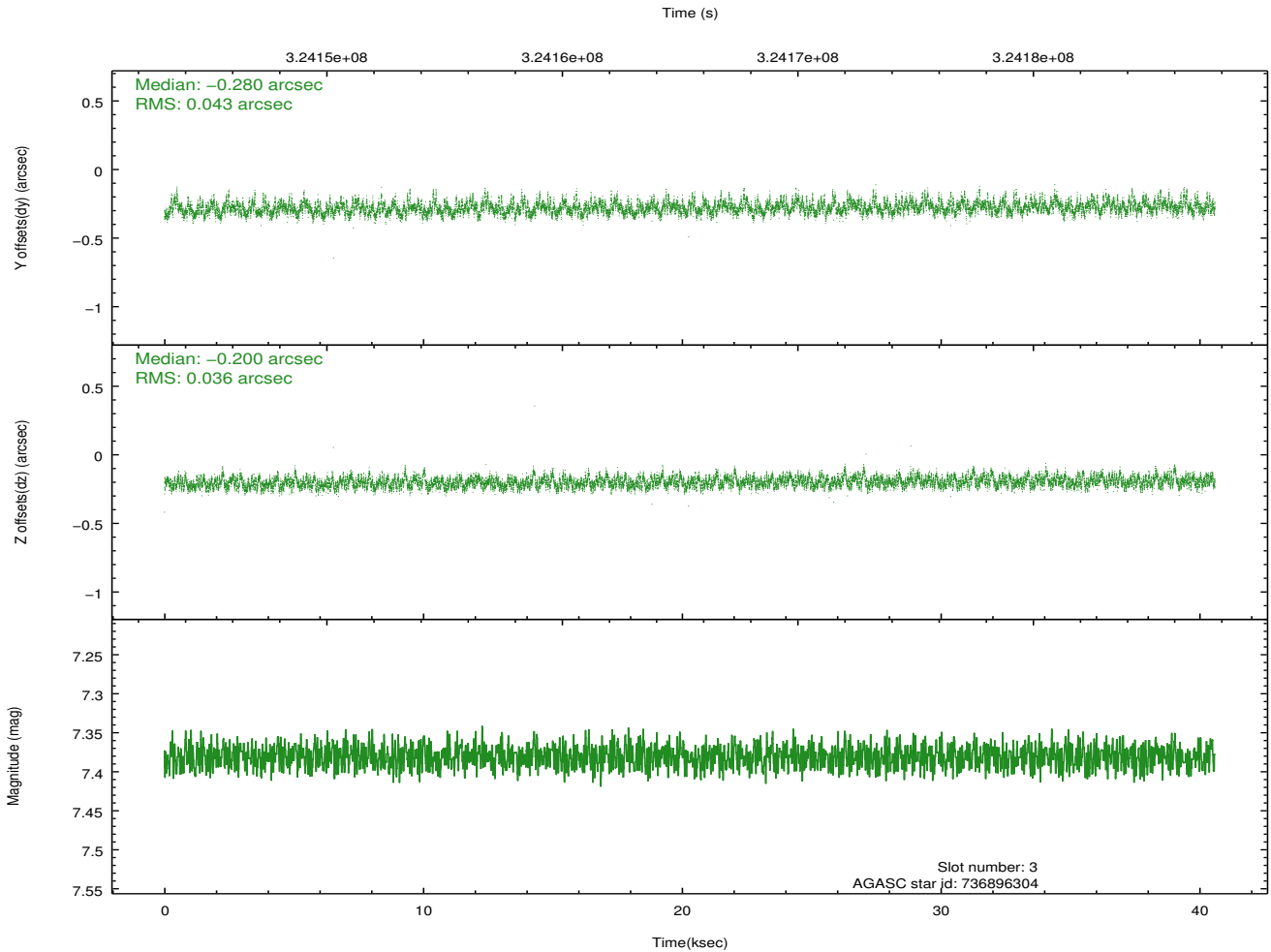
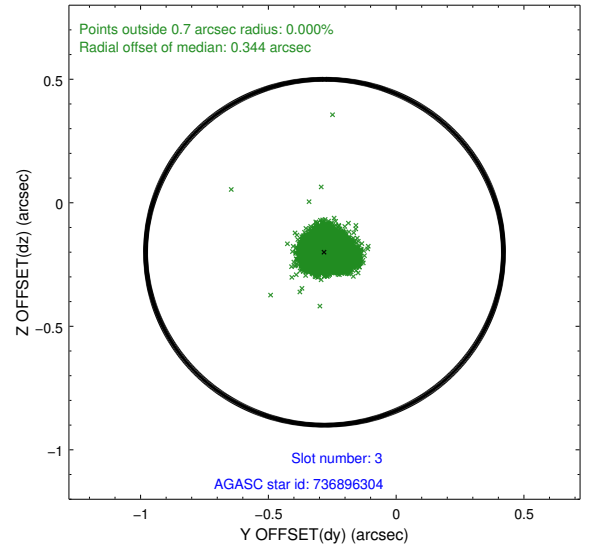
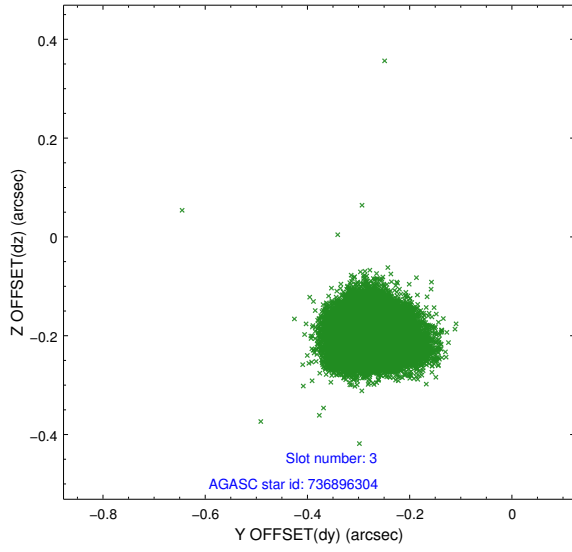


### Slot Statistics

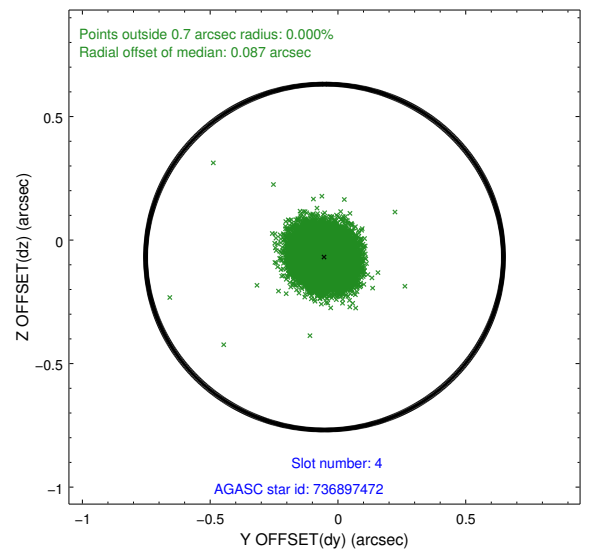
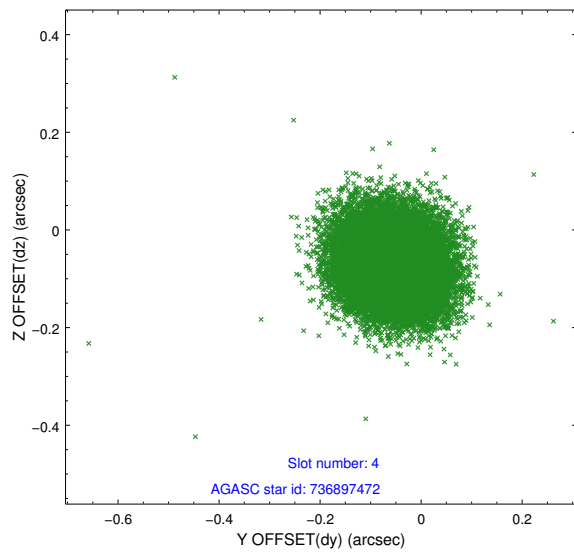
slot	status	id	mag	n_pts	med_dy	med_dz	dr1	dr2	ra	dec	mean_y	mean_z
0	FID	ACIS-S-2	6.91	9900	-0.088	-0.003	0.009	0.030	0.000000	0.000000	-768.70	-1736.98
1	FID	ACIS-S-4	6.99	9900	0.139	0.043	0.007	0.018	0.000000	0.000000	2144.79	171.55
2	FID	ACIS-S-5	7.03	9899	-0.083	-0.032	0.009	0.025	0.000000	0.000000	-1821.53	165.14
3	GUIDE	736896304	7.38	19799	-0.280	-0.200	0.059	0.094	239.189377	-13.575729	2017.17	1625.60
4	GUIDE	736897472	9.04	19777	-0.053	-0.069	0.083	0.133	239.230981	-14.039952	363.07	1346.43
5	GUIDE	736898912	8.31	19792	0.089	0.014	0.068	0.106	239.257262	-14.381338	-854.25	1156.59
6	GUIDE	737019992	8.48	19797	0.156	-0.074	0.073	0.116	239.533699	-14.460164	-1061.74	173.04
7	GUIDE	737024568	8.15	19799	0.088	0.328	0.052	0.085	240.259733	-14.423374	-732.99	-2339.54

## 2.4 Star Slots

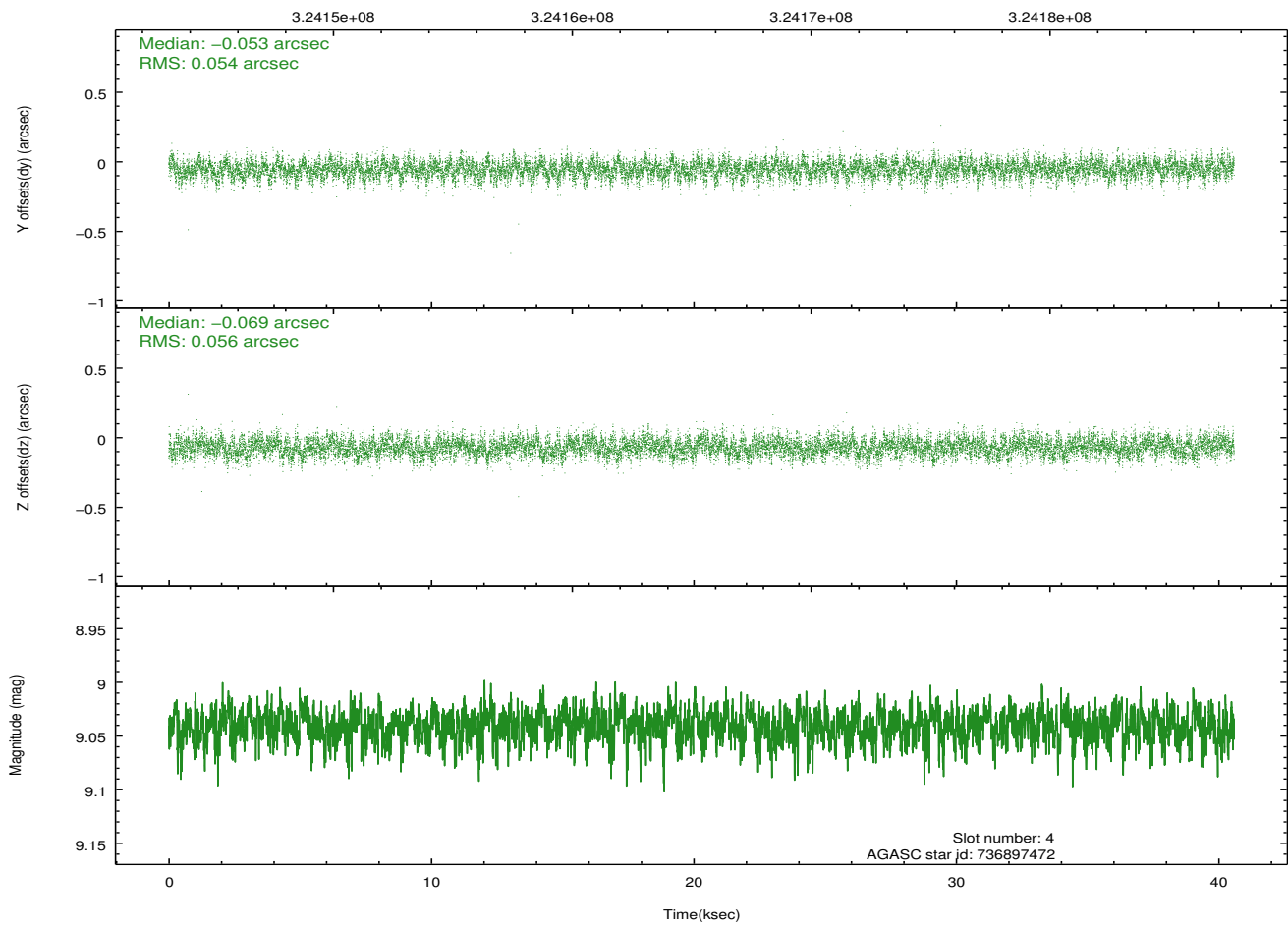
### 2.4.1 Slot 3



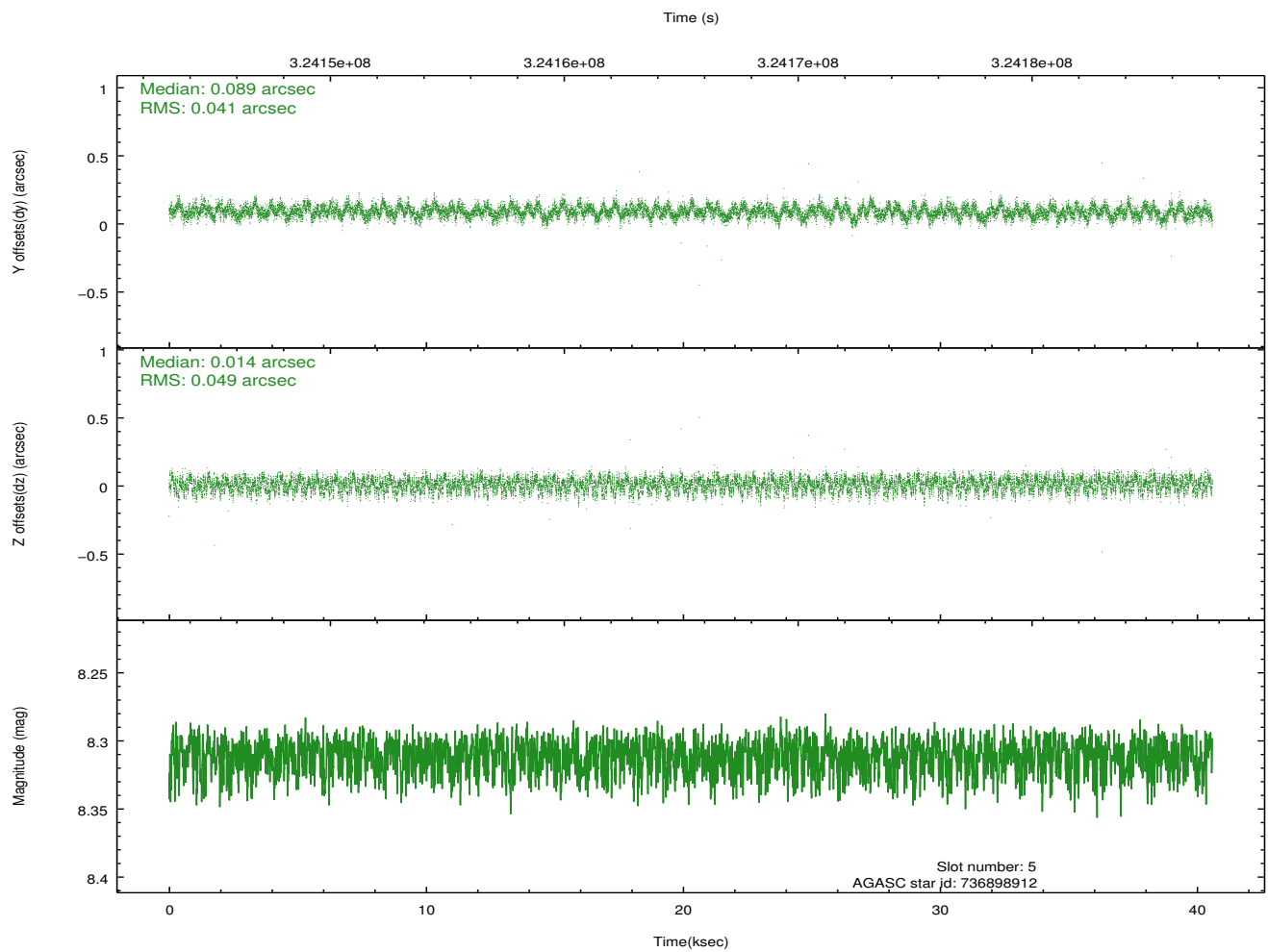
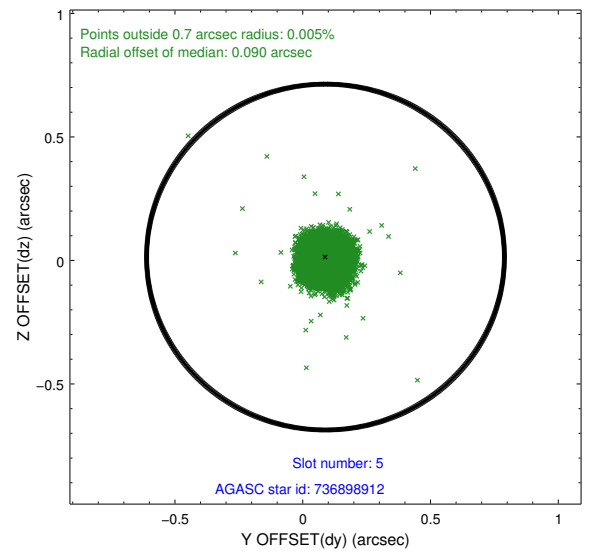
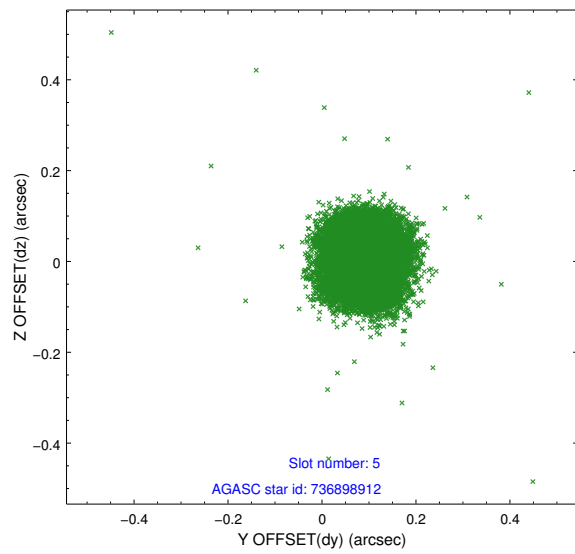
## 2.4.2 Slot 4



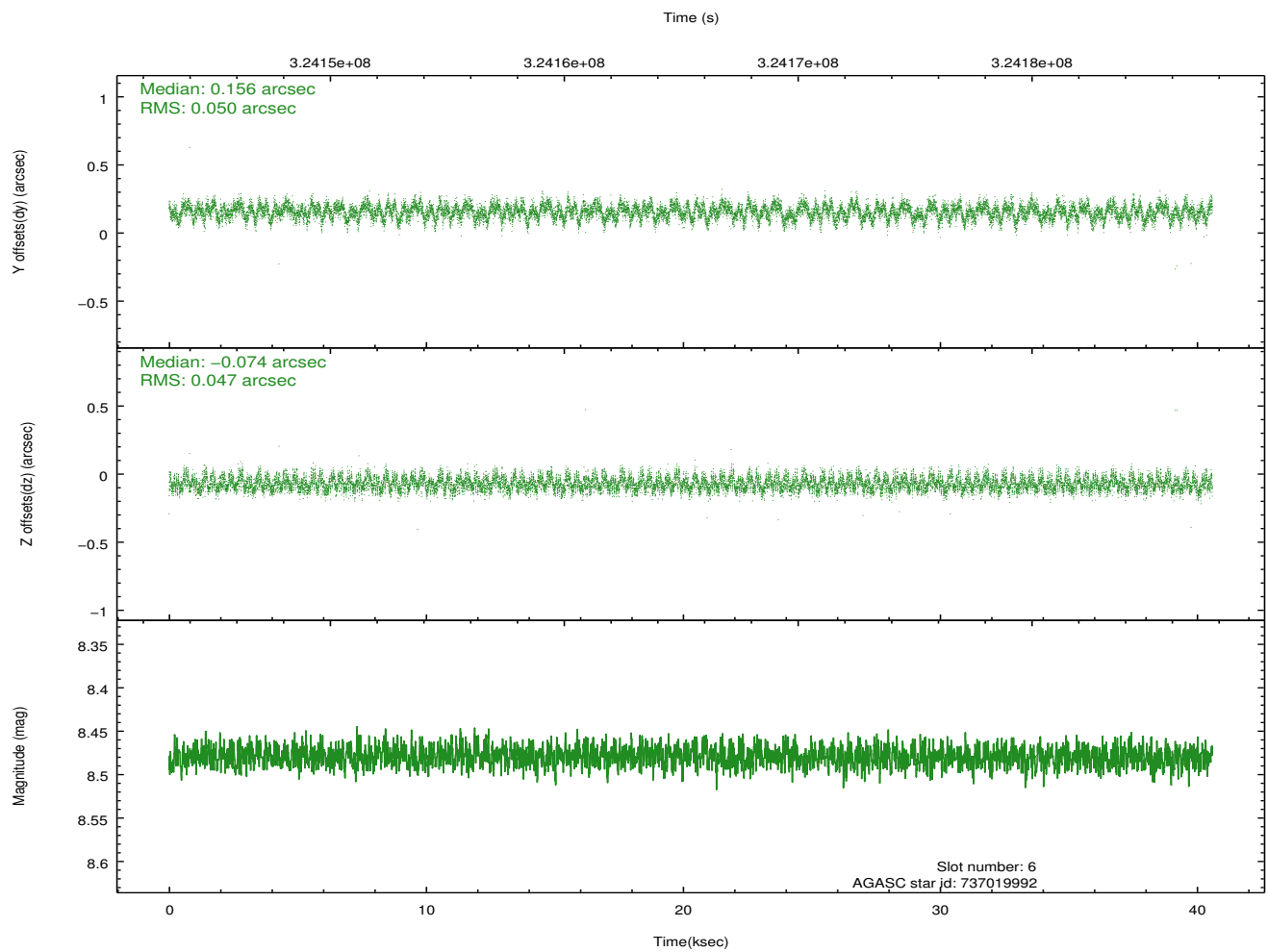
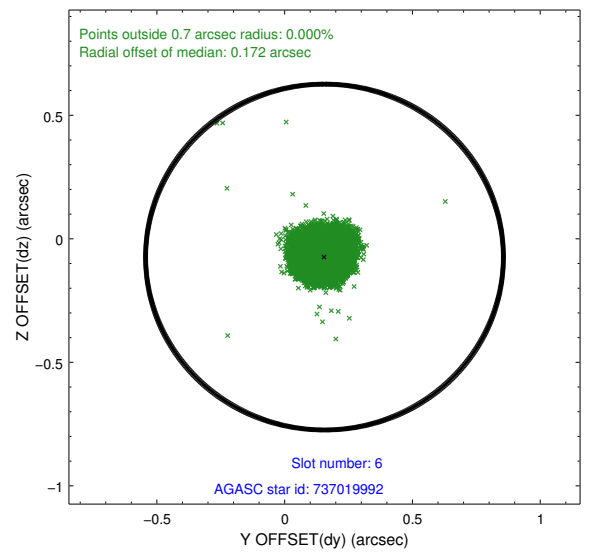
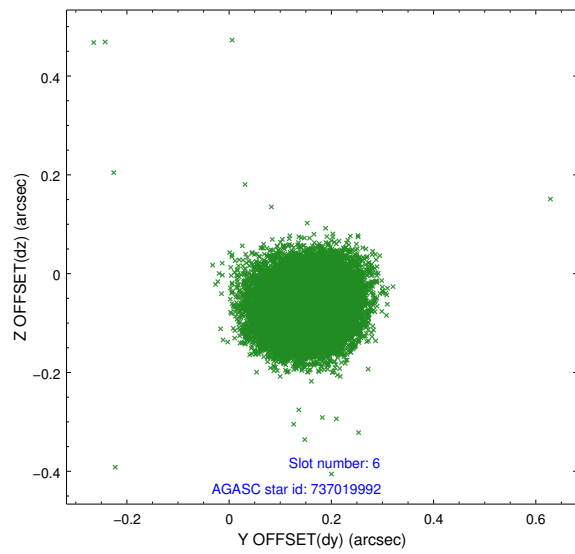
Time (s)



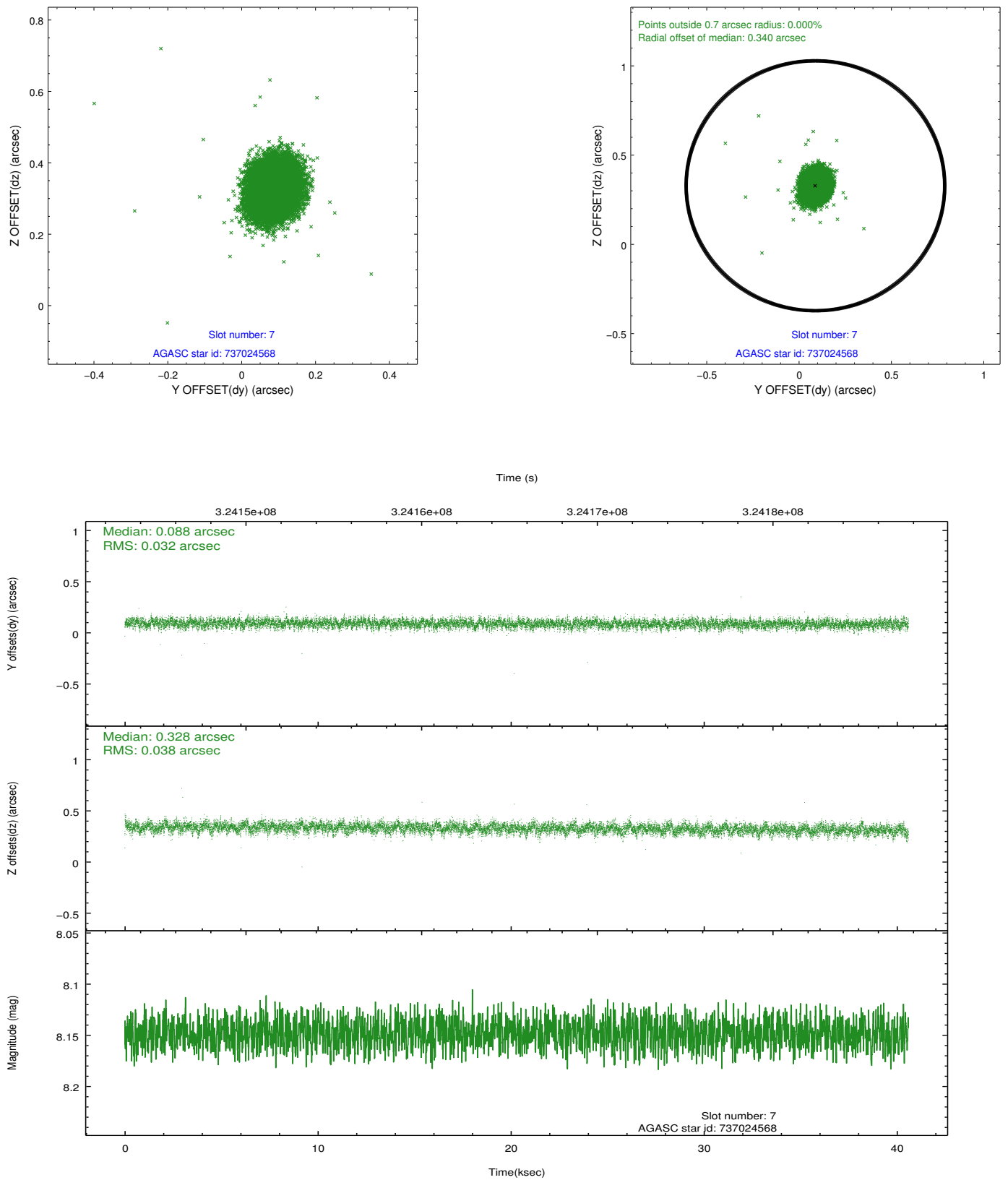
### 2.4.3 Slot 5



## 2.4.4 Slot 6

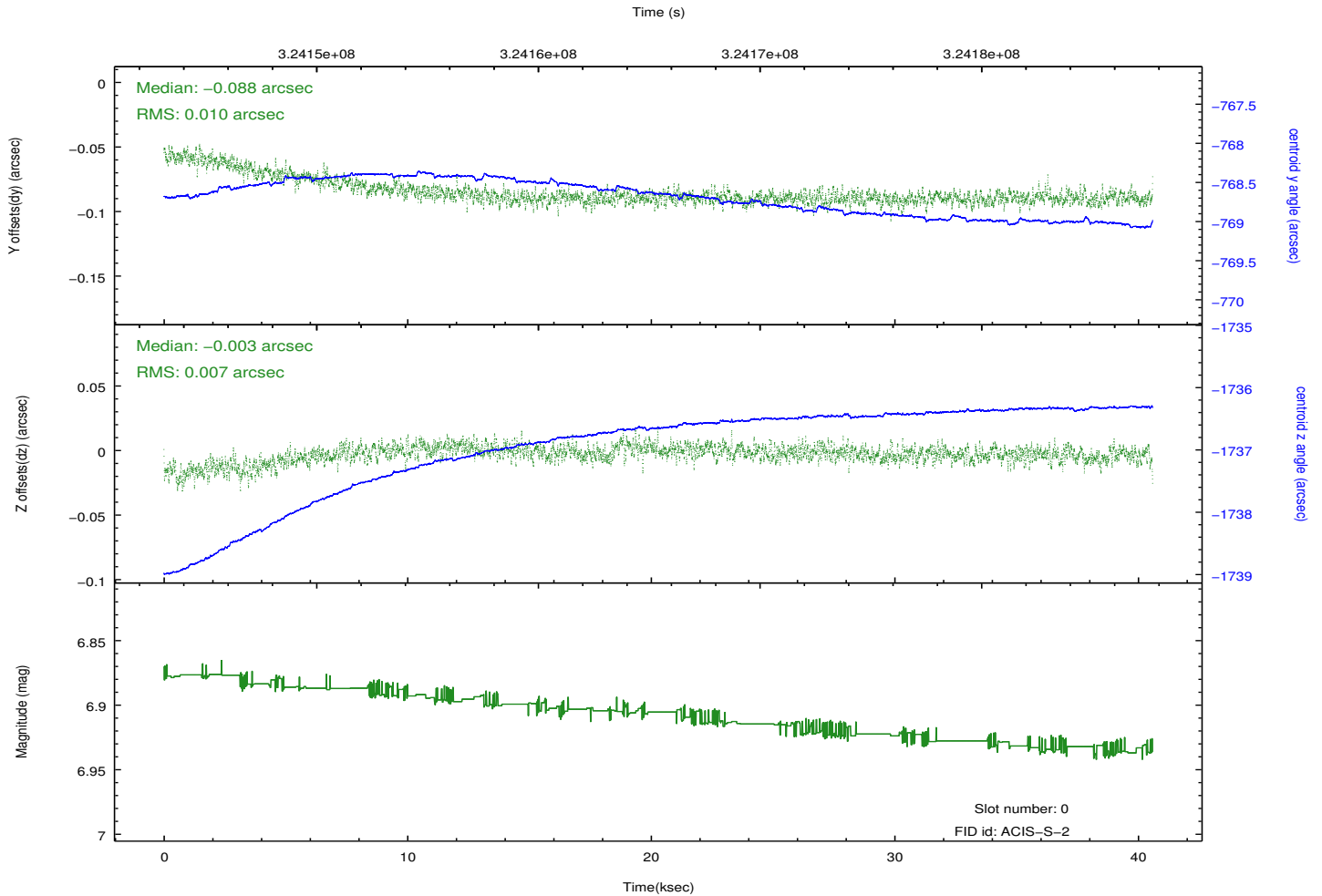
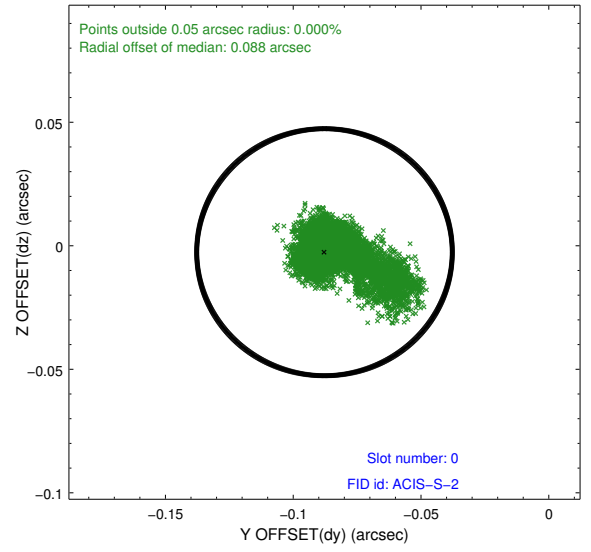
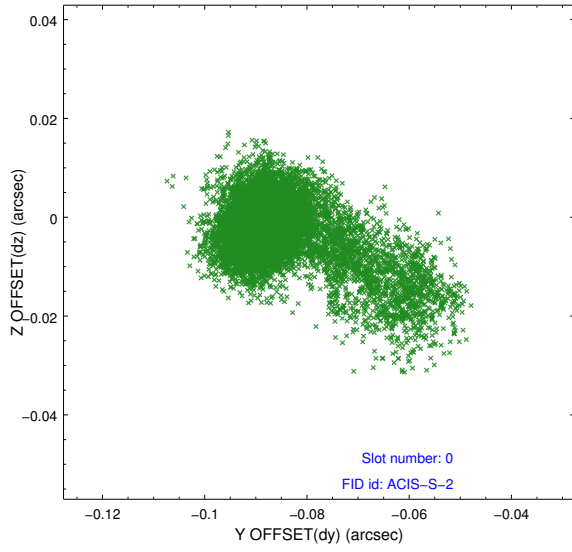


### 2.4.5 Slot 7

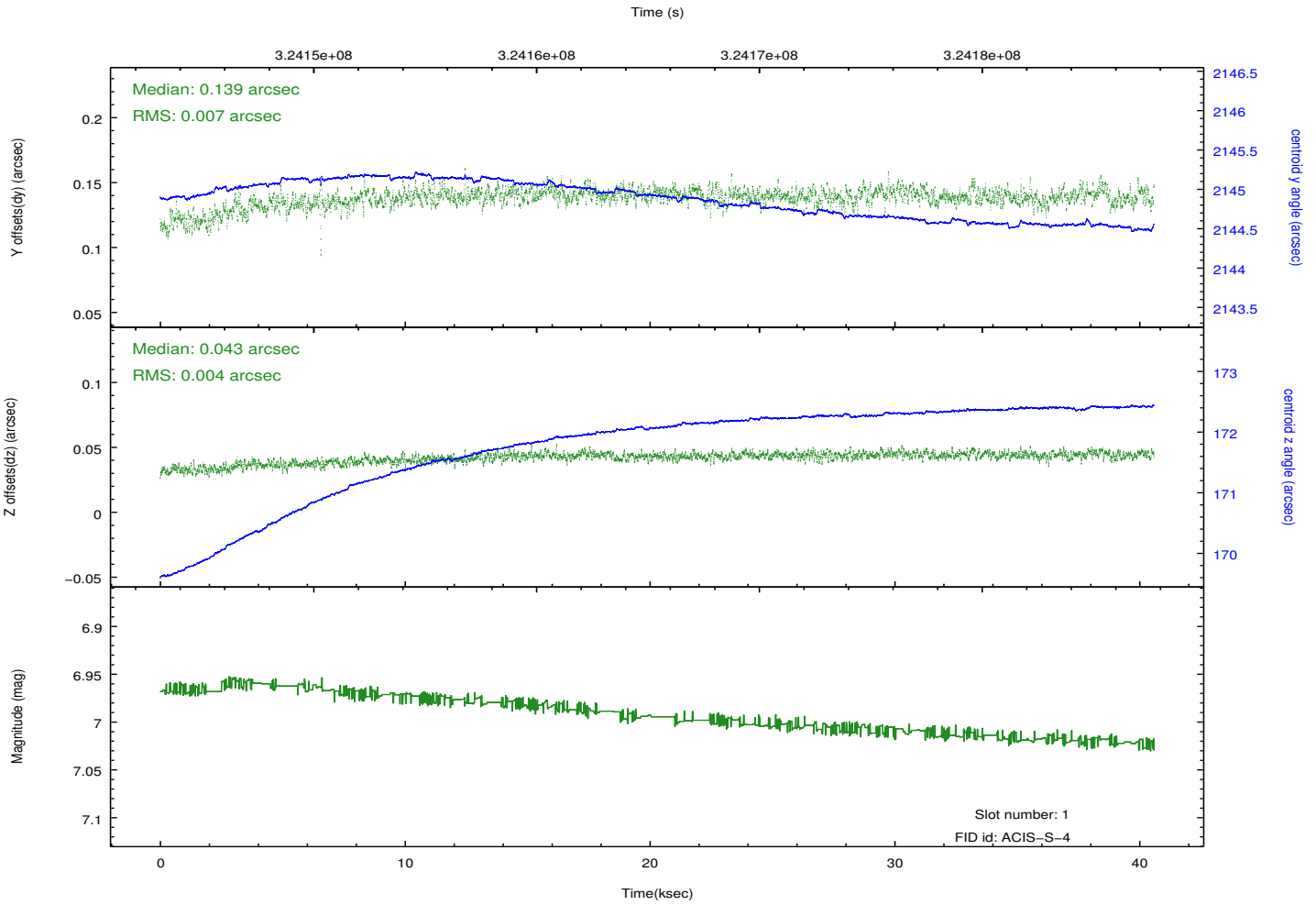
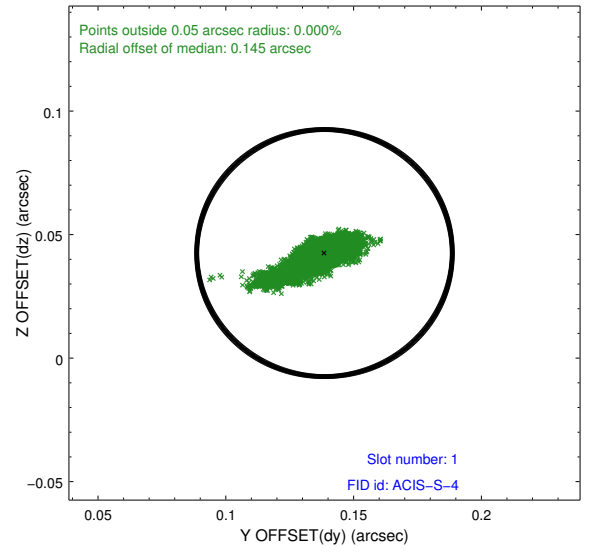
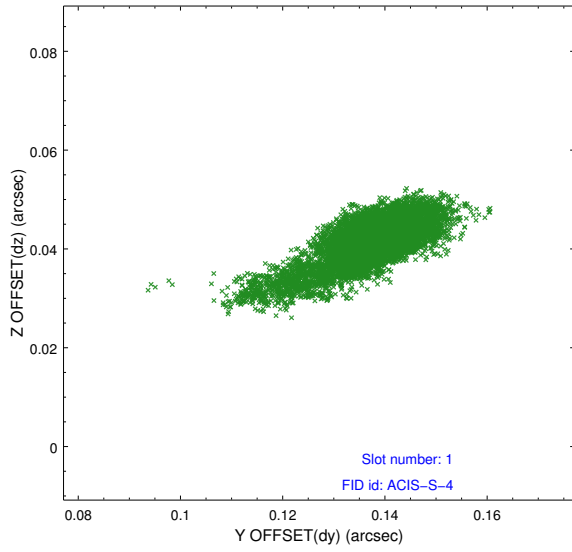


## 2.5 FID Slots

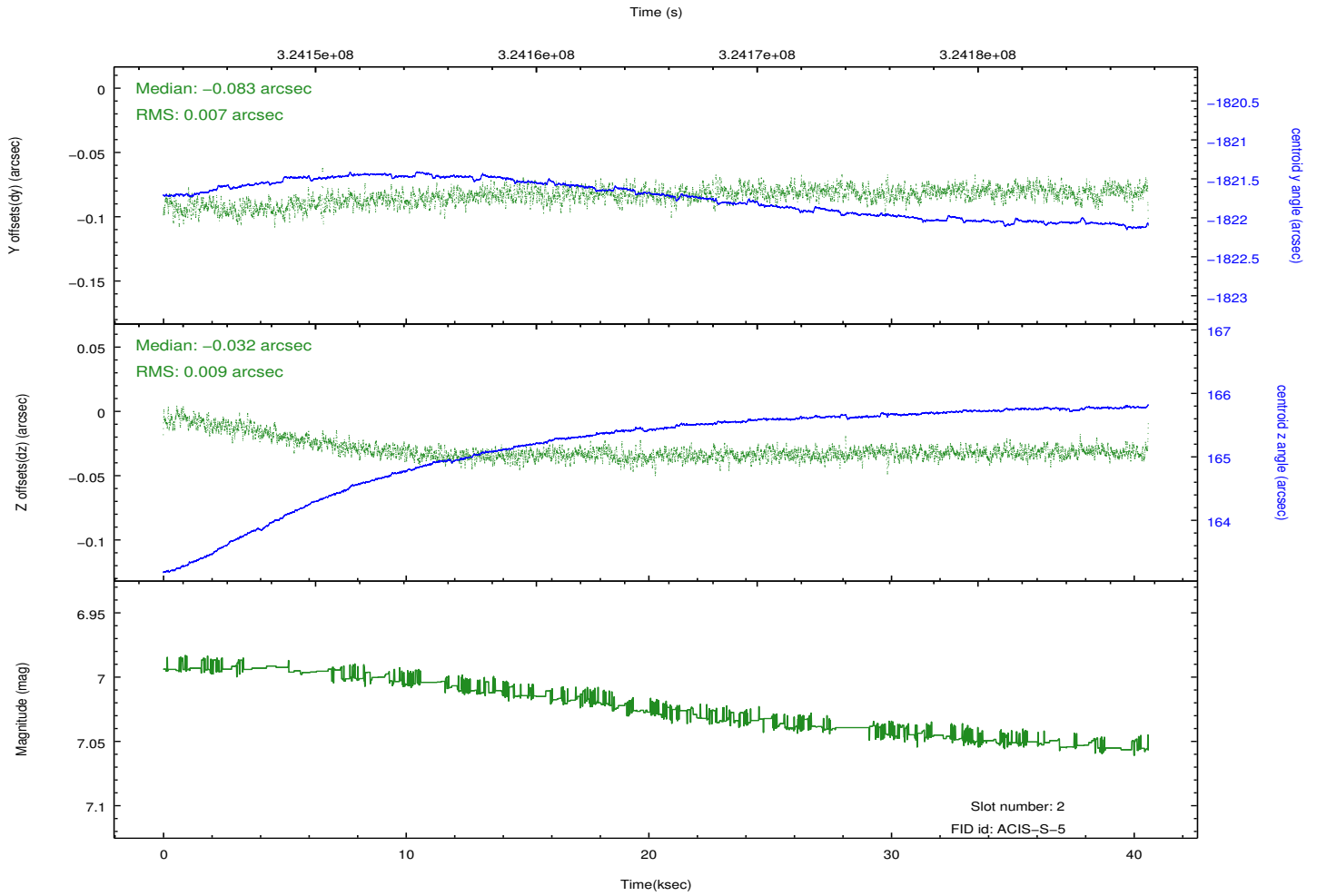
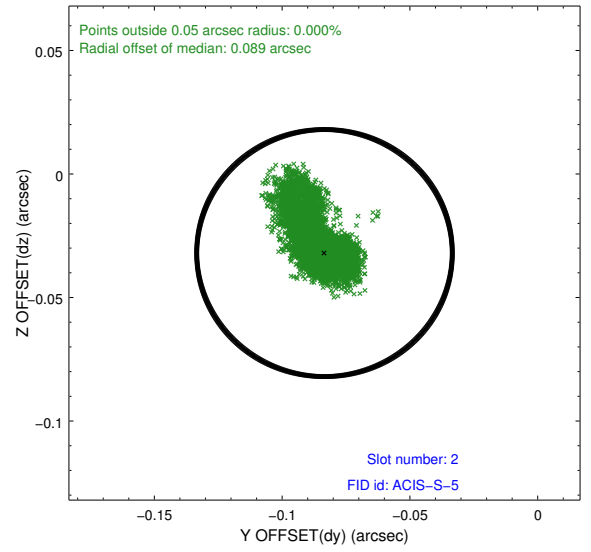
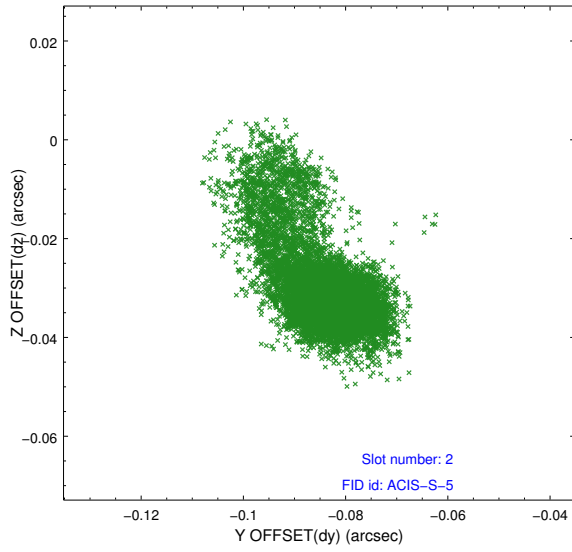
### 2.5.1 Slot 0



## 2.5.2 Slot 1



### 2.5.3 Slot 2



# A Summary

## A.1 Status

V&V Scientist	Beth Sundheim
V&V Date (YYYY-MM-DD)	2012.05.15
V&V Edition	1
V&V Disposition and Status	OK
V&V Charge Time	40.5883003

## A.2 Comments