

V&V Reference Report

L2 ASCDS Version : 8.4.5

Observation 942 - L2 Version 4
Chandra X-Ray Center

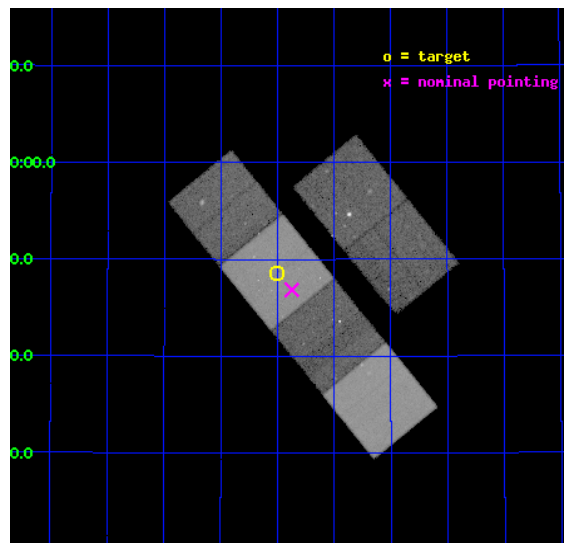
L2 Processing Date : Aug 28 2012

Contents

1	Front	2
2	OBI	3
2.1	OBI	3
2.1.1	Images	3
2.1.2	Bias	3
2.1.3	Parameters	4
2.1.4	Events	4
2.2	Compared Parameters	5
2.3	Aspect	6
2.4	Star Slots	9
2.4.1	Slot 3	9
2.4.2	Slot 4	10
2.4.3	Slot 5	11
2.4.4	Slot 6	12
2.4.5	Slot 7	13
2.5	FID Slots	14
2.5.1	Slot 0	14
2.5.2	Slot 1	15
2.5.3	Slot 2	16
A	Summary	17
A.1	Status	17
A.2	Comments	17

1 Front

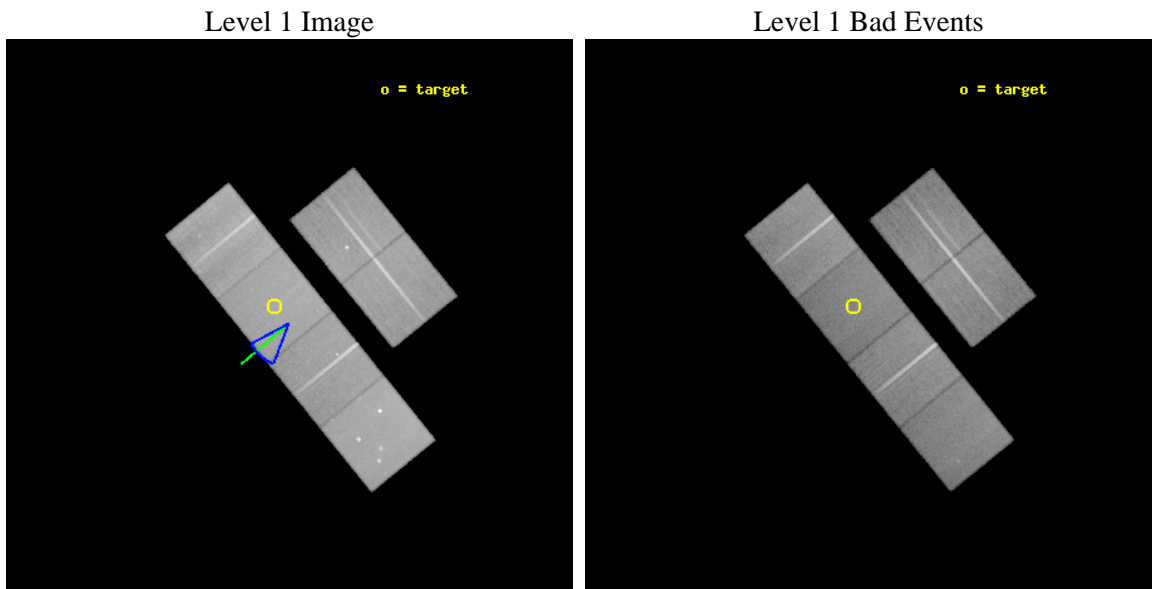
seq_num	900014	Sequence number
obs_id	942	Observation id
title	NGC 4244: SHADOWING THE EXTRAGALACTIC SOFT X-RAY BACKGROUND	Propos
observer	Prof. Q. Daniel Wang	Principal investigator
object	NGC 4244	Source name
dtcycle	0	
cycle	P	events from which exps? Prim/Second/Both
ra_targ	184.375	Observer's specified target RA [deg]
dec_targ	37.808889	Observer's specified target Dec [deg]
ra_nom	184.3430399825	Nominal RA [deg]
dec_nom	37.780885389847	Nominal Dec [deg]
roll_nom	230.87536569819	Nominal Roll [deg]
revision	4	Processing version of data
ontime	49845.166824192	Sum of GTIs [s]
livetime	49213.997308708	Livetime [s]
ontime2	49841.966874048	Sum of GTIs [s]
ontime3	49845.043704197	Sum of GTIs [s]
ontime5	49845.125784189	Sum of GTIs [s]
ontime6	49841.843913585	Sum of GTIs [s]
ontime7	49845.166824192	Sum of GTIs [s]
ontime8	49845.002664194	Sum of GTIs [s]
l2events	495551	Number of level 2 events



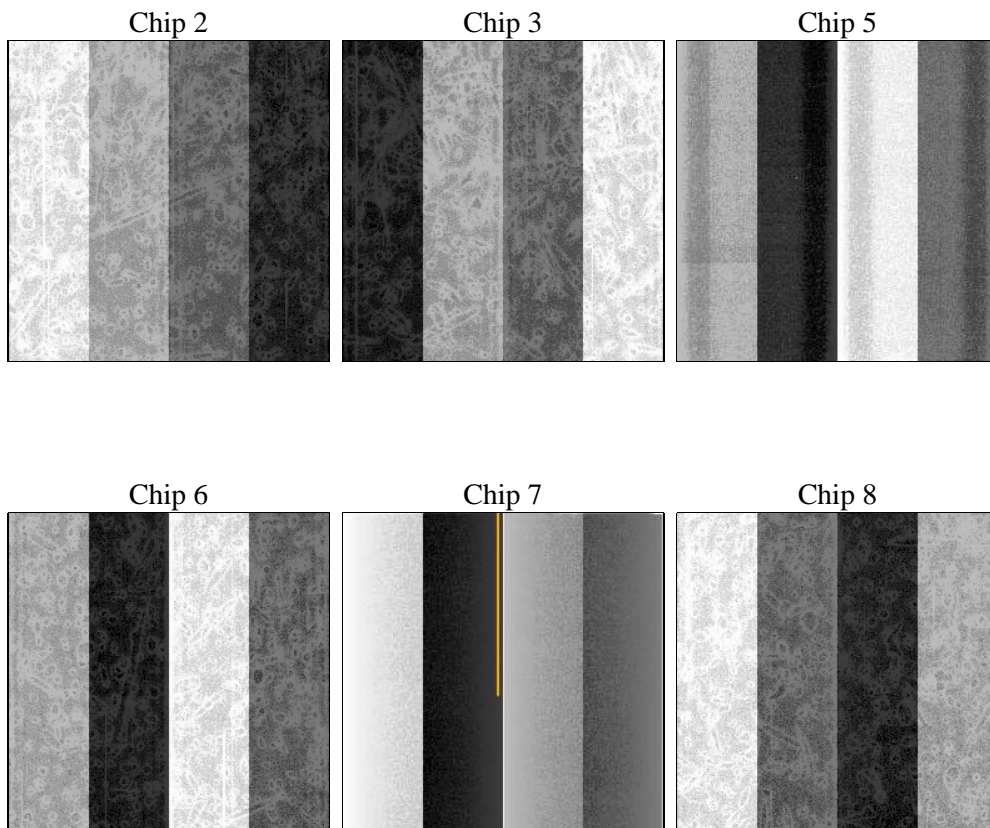
2 OBI

2.1 OBI

2.1.1 Images



2.1.2 Bias



2.1.3 Parameters

obi_num	1	Obi number	sched_exp_time	50000.000000	[s] Scheduled observation exposure time
ascdsver	8.4.5	Processing system revision	ontime	49845.166824192	Sum of GTIs [s]
caldbver	4.5.1.1	 	ontime2	49841.966874048	Sum of GTIs [s]
date	2012-08-28T07:36:22	Date and time of file creation	ontime3	49845.043704197	Sum of GTIs [s]
revision	4	Processing version of data	ontime5	49845.125784189	Sum of GTIs [s]
			ontime6	49841.843913585	Sum of GTIs [s]
			ontime7	49845.166824192	Sum of GTIs [s]
			ontime8	49845.002664194	Sum of GTIs [s]
			l1events	2343752	Number of level 1 events

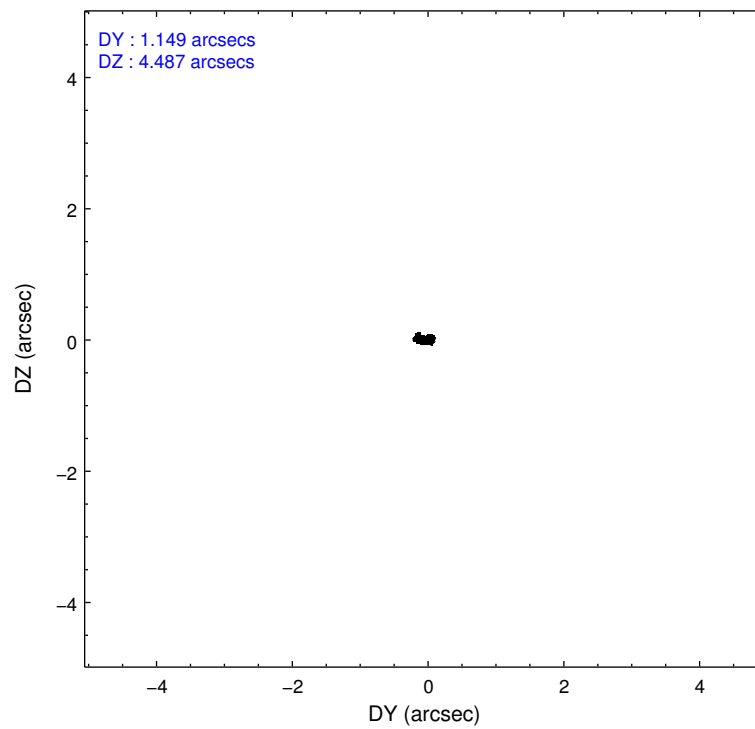
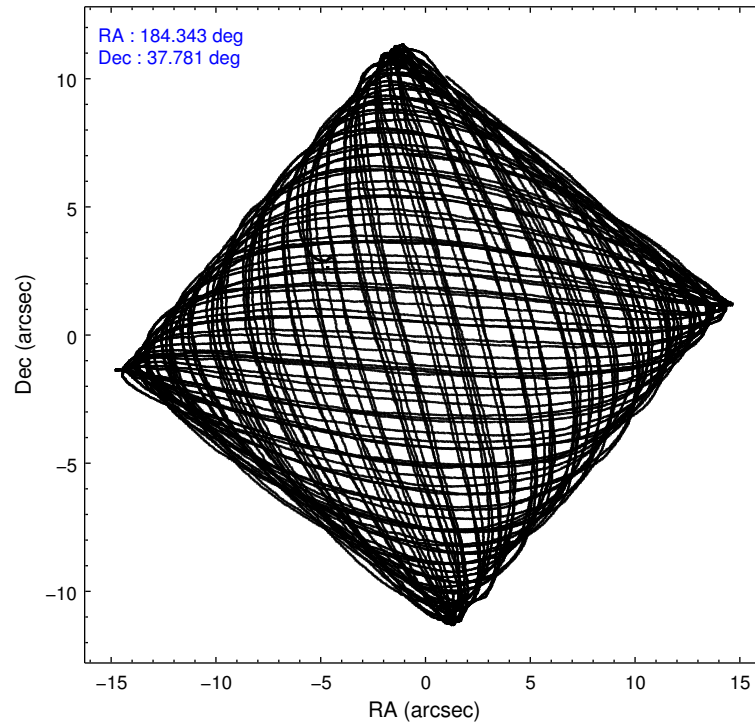
2.1.4 Events

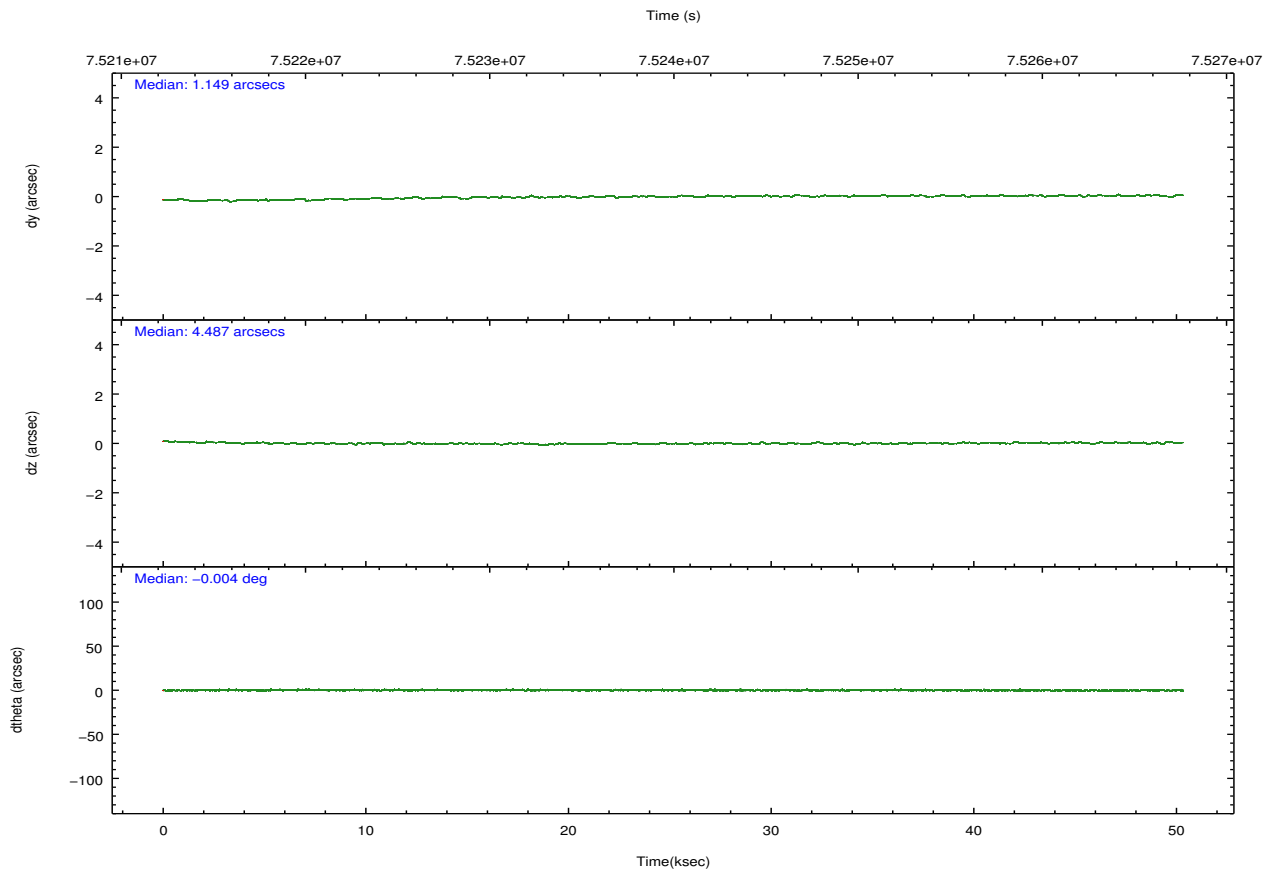
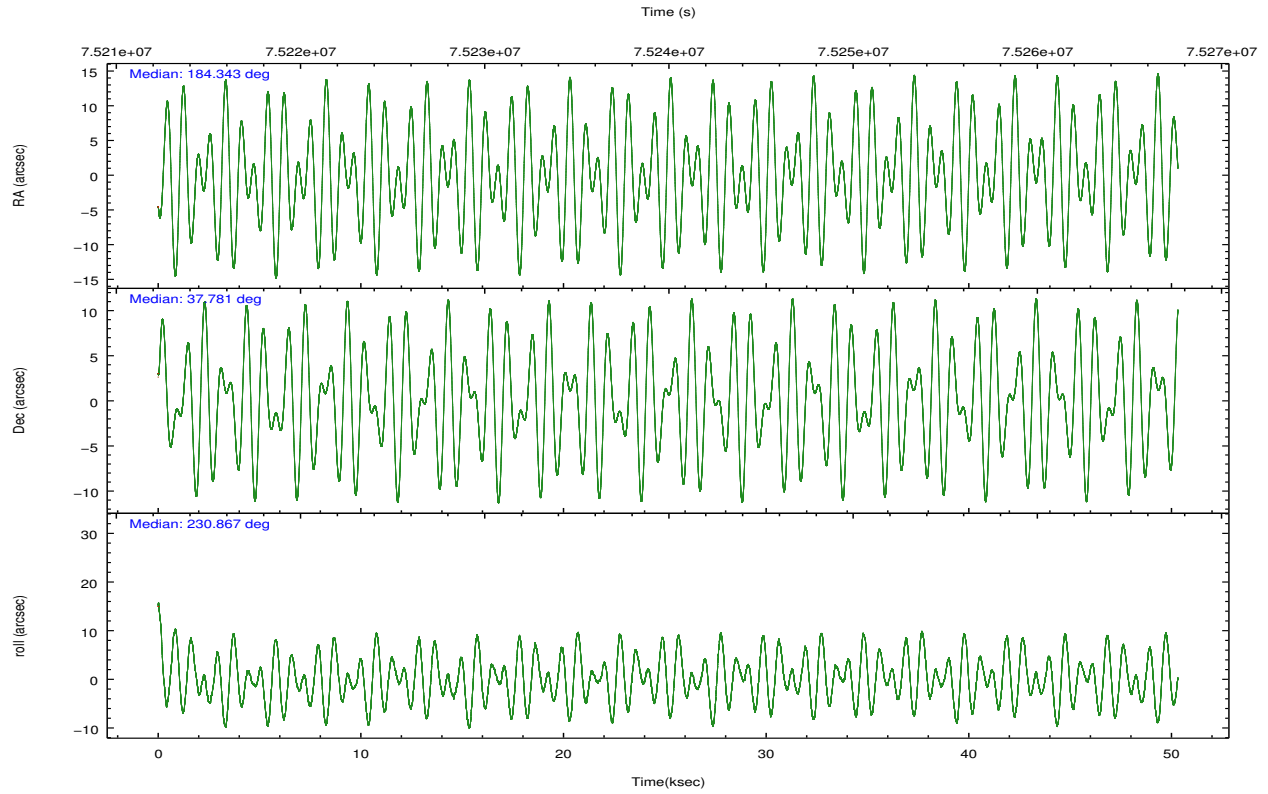
	ccd 2	ccd 3	ccd 5	ccd 6	ccd 7	ccd 8		ccd 2	ccd 3	ccd 5	ccd 6	ccd 7	ccd 8
level 1 events	354162	344596	453131	349607	398038	444218	grade 0 events	15076	20427	33856	17124	16788	33219
rejected events	317435	302267	236877	309701	227905	343215		4%	5%	7%	4%	4%	7%
rejected %	89%	87%	52%	88%	57%	77%	grade 1 events	162	174	558	155	385	281
								0%	0%	0%	0%	0%	0%
							grade 2 events	8012	7811	59992	7780	33566	19273
								2%	2%	13%	2%	8%	4%
							grade 3 events	3575	3766	9305	3777	15505	12785
								1%	1%	2%	1%	3%	2%
							grade 4 events	3541	3576	8755	3765	15494	11700
								0%	1%	1%	1%	3%	2%
							grade 5 events	10326	11258	33441	12737	38012	16166
								2%	3%	7%	3%	9%	3%
							grade 6 events	6525	6751	104361	7461	88792	24031
								1%	1%	23%	2%	22%	5%
							grade 7 events	306945	290833	202863	296808	189496	326763
								86%	84%	44%	84%	47%	73%

2.2 Compared Parameters

Parameter	Planned	Actual	Parameter	Planned	Actual
Instrument	ACIS	ACIS	Obspar format version number	7	7
Detector	ACIS-235678	ACIS-235678	Obspar file type	PREDICTED	ACTUAL
Grating	NONE	NONE	Obspar update status	NONE	UPDATED
Data mode	VFAINT	VFAINT	Number of optional ACIS chips dropped	0	0
Observation mode	POINTING	POINTING	On-chip summing requested	N	N
[deg] Pointing RA	184.348427	184.3430399825028	Subarray requested	NONE	NONE
[deg] Pointing Dec	37.807976	37.78088538984669	Alternating exposures requested	N	N
[deg] Pointing Roll	230.715441	230.875365698187	[s] Primary exposure time	0.000000	3.2
[deg] Roll angle	222.000000	222.000000			
[deg] Roll tolerance	20.000000	20.000000			
Roll constraint allows 180D rotation	N	N			
[mm] SIM focus pos	-0.684267	-0.6828225247311905			
[mm] SIM defocus	0	0.001444936568705701			
[mm] SIM translation stage pos	-190.132523	-190.1400660498719			
[mm] SIM translation stage offset	0	0.00754346686406393			
[s] Observation start time (MET)	75215111.184000	75214089.470329			
Observation start date	2000-05-20T13:04:07	2000-05-20T12:48:09			
[s] Observation end time (MET)	75265111.184000	75266010.334737			
Observation end date	2000-05-21T02:57:27	2000-05-21T03:13:30			
Read mode	TIMED	TIMED			

2.3 Aspect



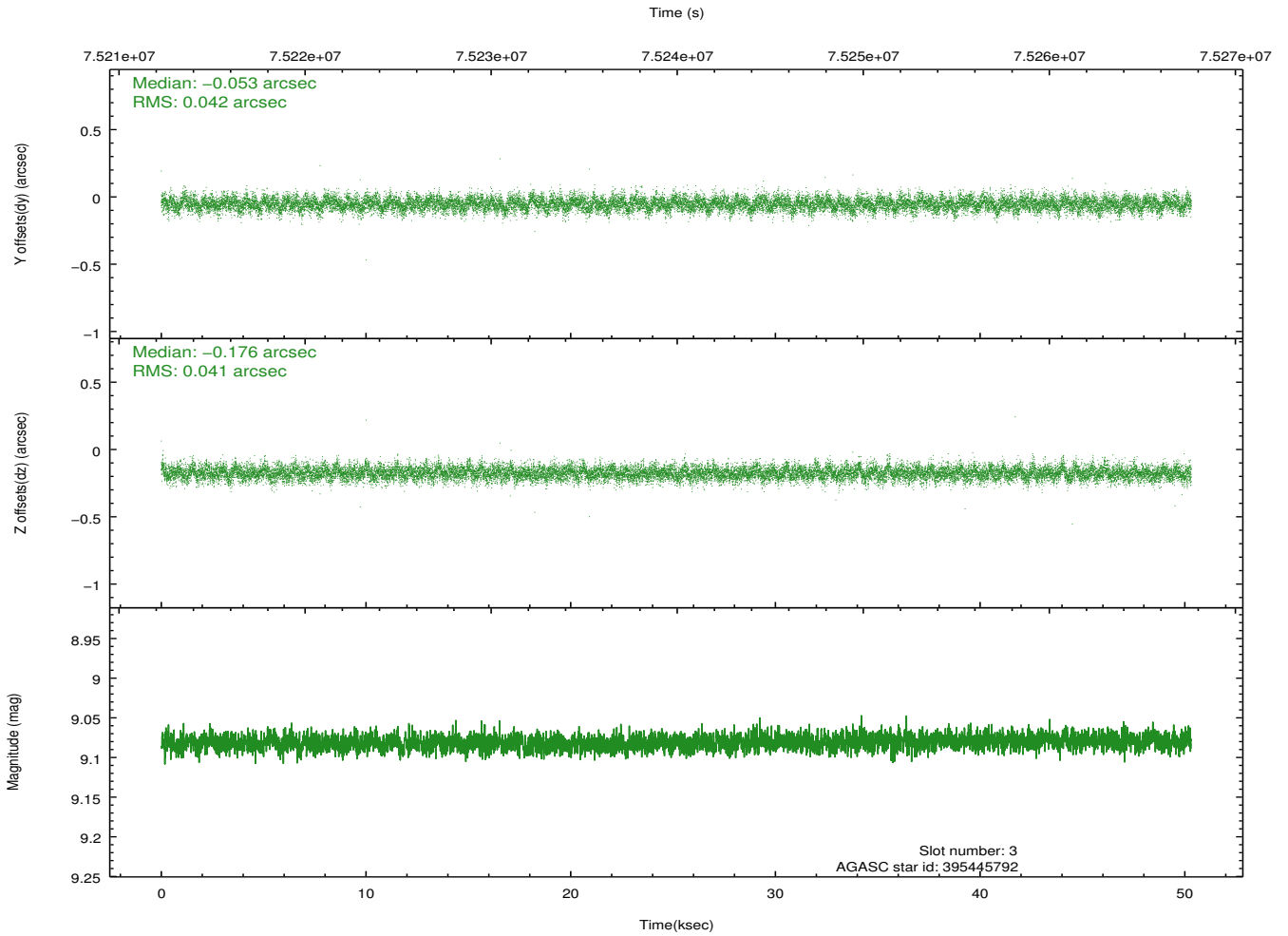
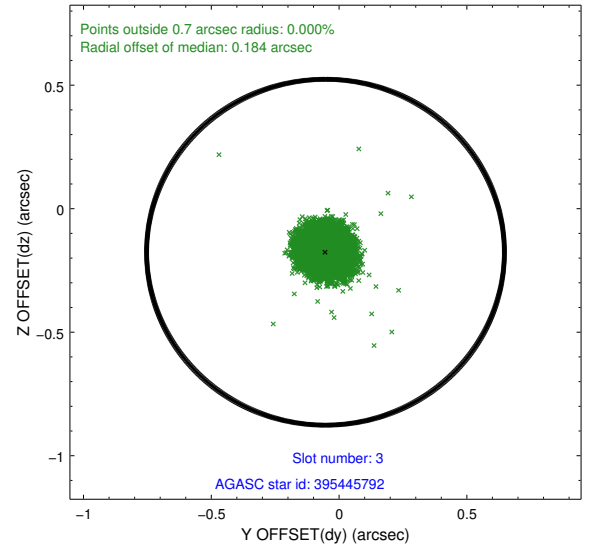
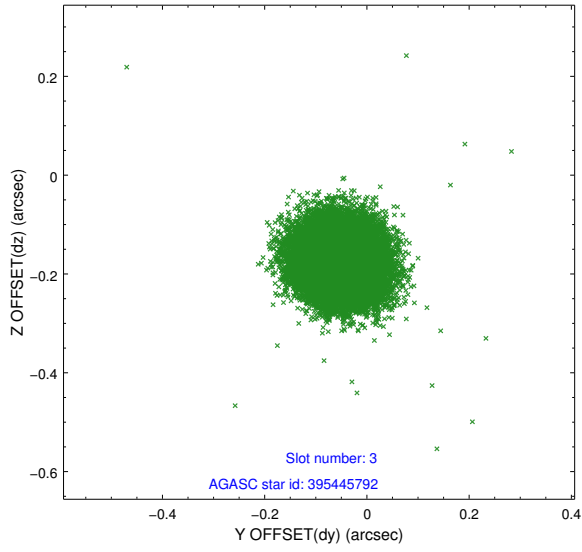


Slot Statistics

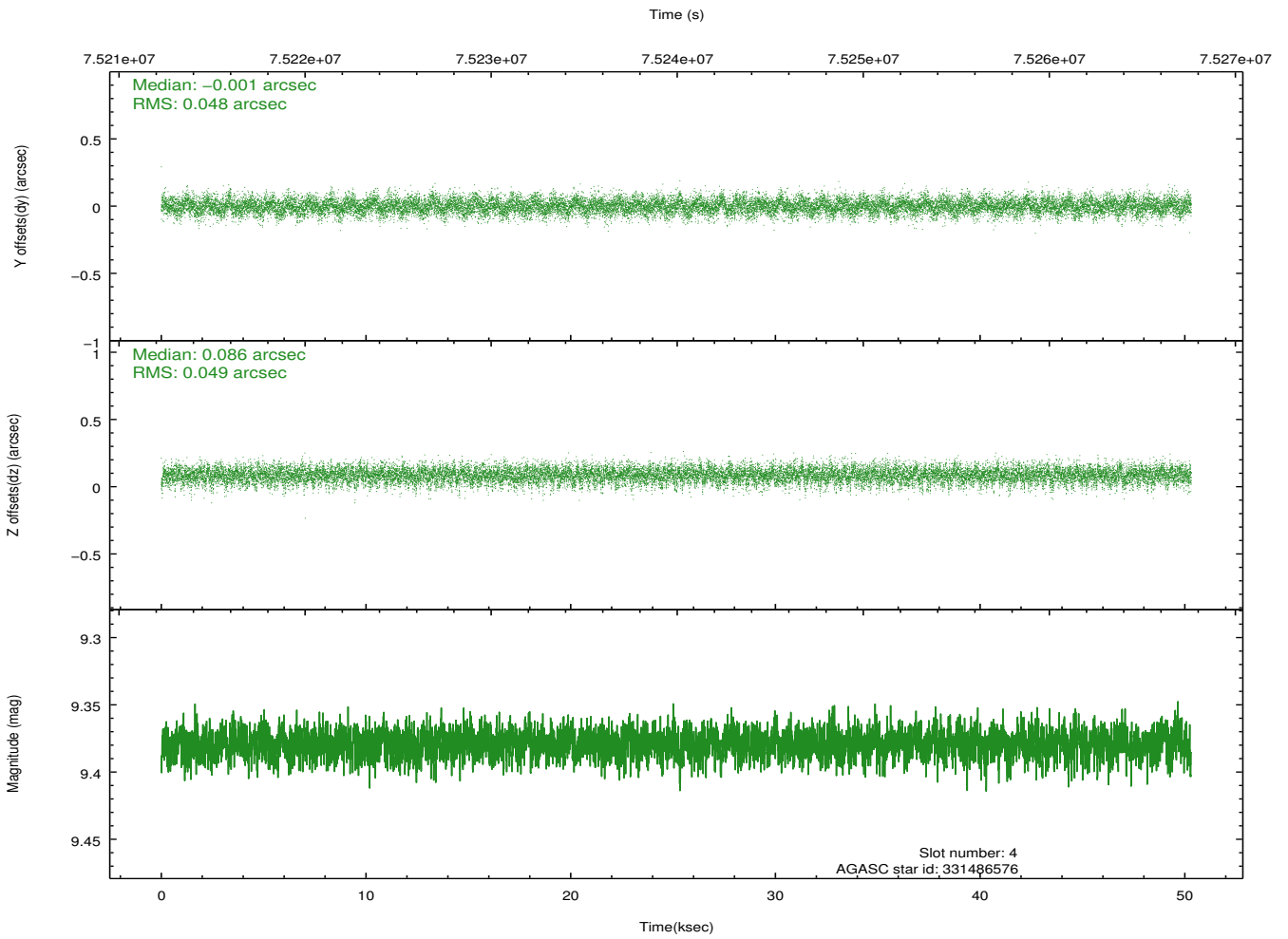
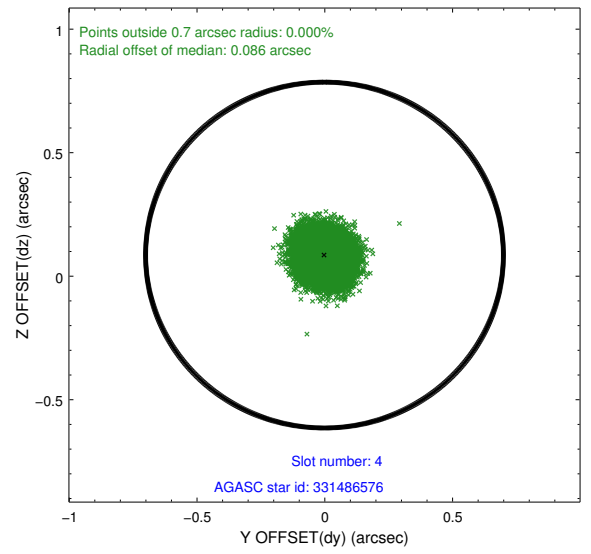
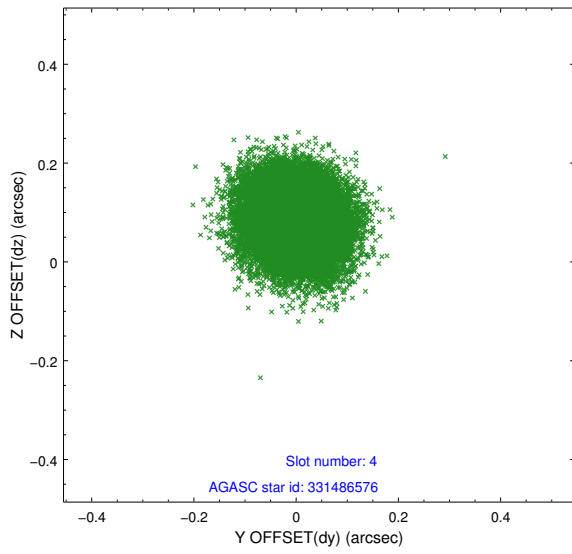
slot	status	id	mag	n_pts	med_dy	med_dz	dr1	dr2	ra	dec	mean_y	mean_z
0	FID	ACIS-S-2	7.11	12274	-0.026	-0.009	0.006	0.011	0.000000	0.000000	-753.75	-1725.59
1	FID	ACIS-S-4	7.21	12274	0.001	0.015	0.006	0.011	0.000000	0.000000	2159.57	182.92
2	FID	ACIS-S-5	7.23	12274	-0.006	0.003	0.007	0.011	0.000000	0.000000	-1806.59	176.58
3	GUIDE	395445792	9.08	24528	-0.053	-0.176	0.062	0.101	184.185519	37.626416	799.22	54.16
4	GUIDE	331486576	9.38	24536	-0.001	0.086	0.073	0.118	183.847229	37.463265	1864.07	-324.69
5	GUIDE	331488832	9.95	24530	0.135	0.254	0.113	0.184	184.485285	36.899363	2281.63	2376.73
6	GUIDE	331484960	9.86	24508	0.014	-0.083	0.090	0.146	184.228750	37.484084	1118.44	473.86
7	GUIDE	395447840	10.08	24515	-0.094	-0.082	0.110	0.180	183.803020	37.897176	728.74	-1405.25

2.4 Star Slots

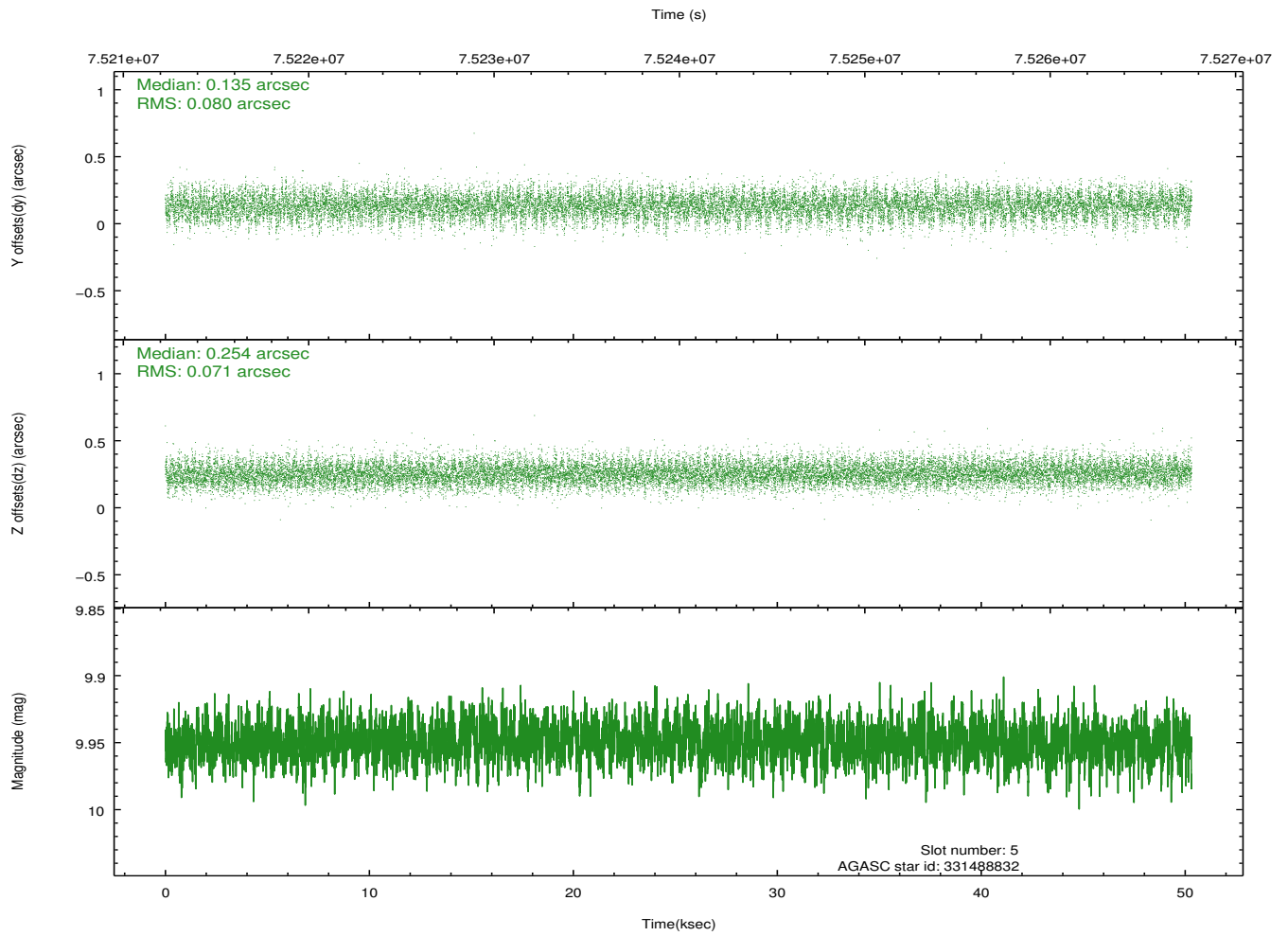
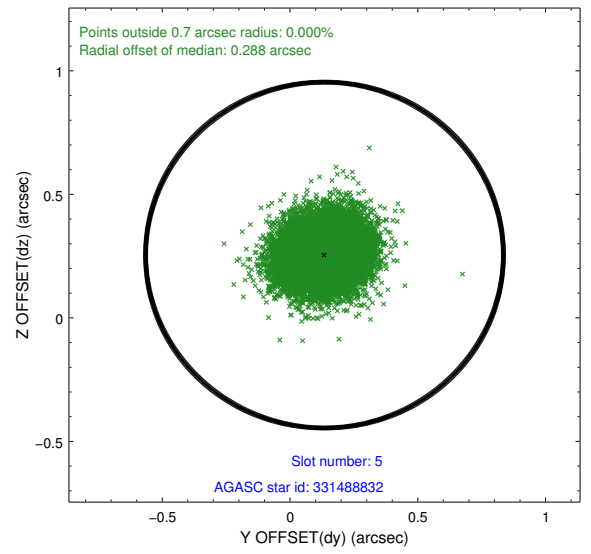
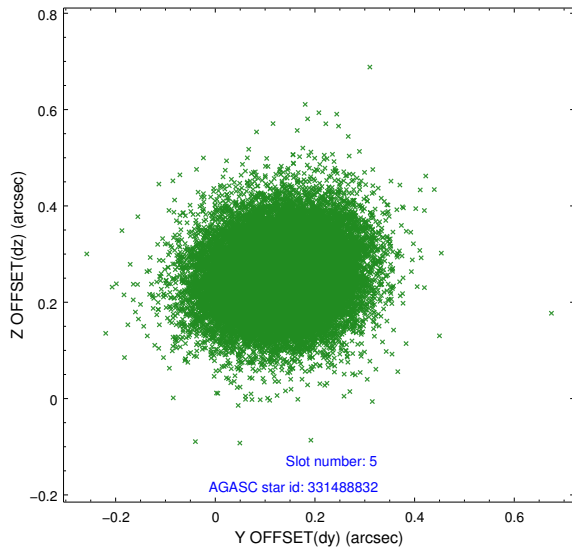
2.4.1 Slot 3



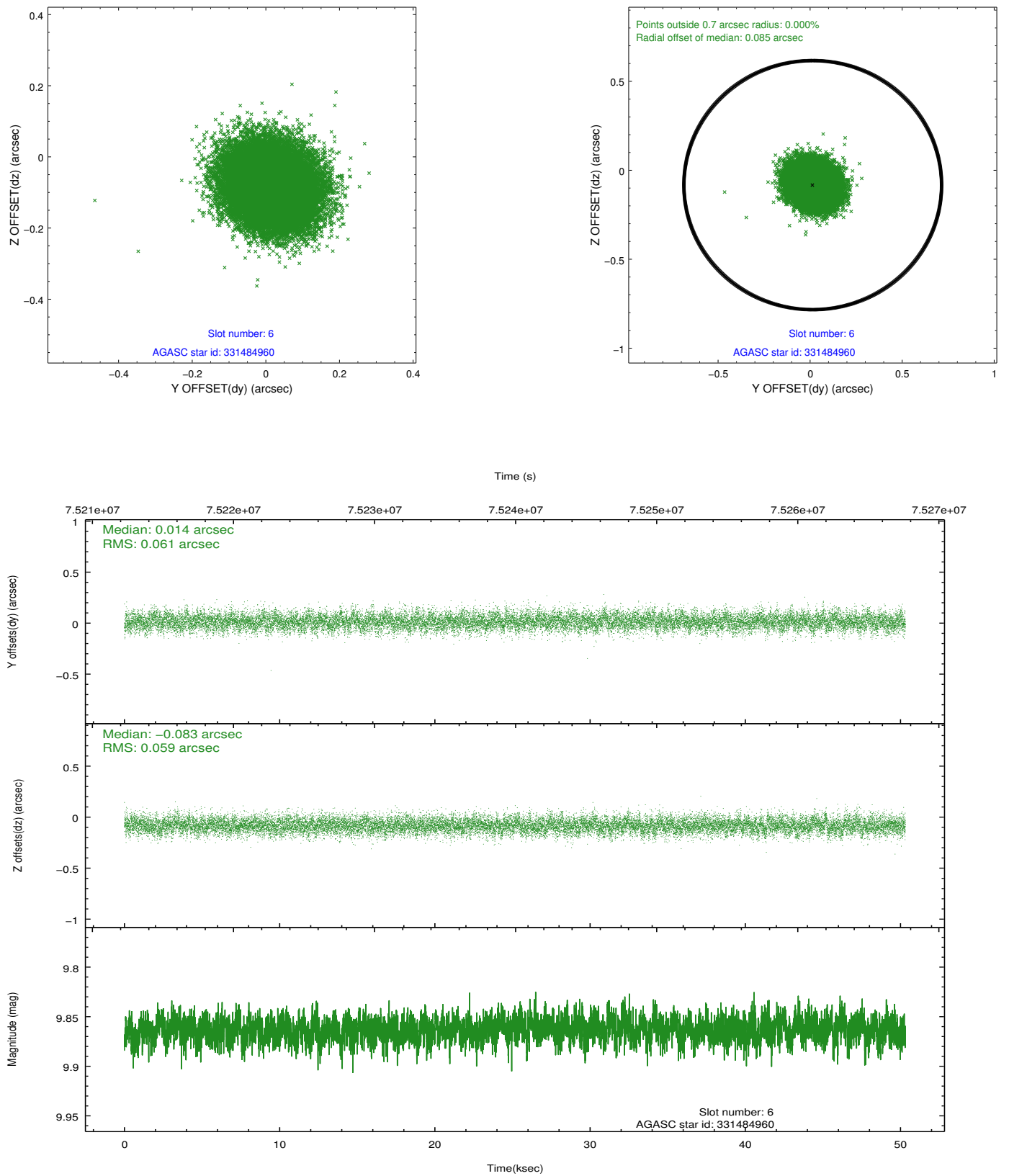
2.4.2 Slot 4



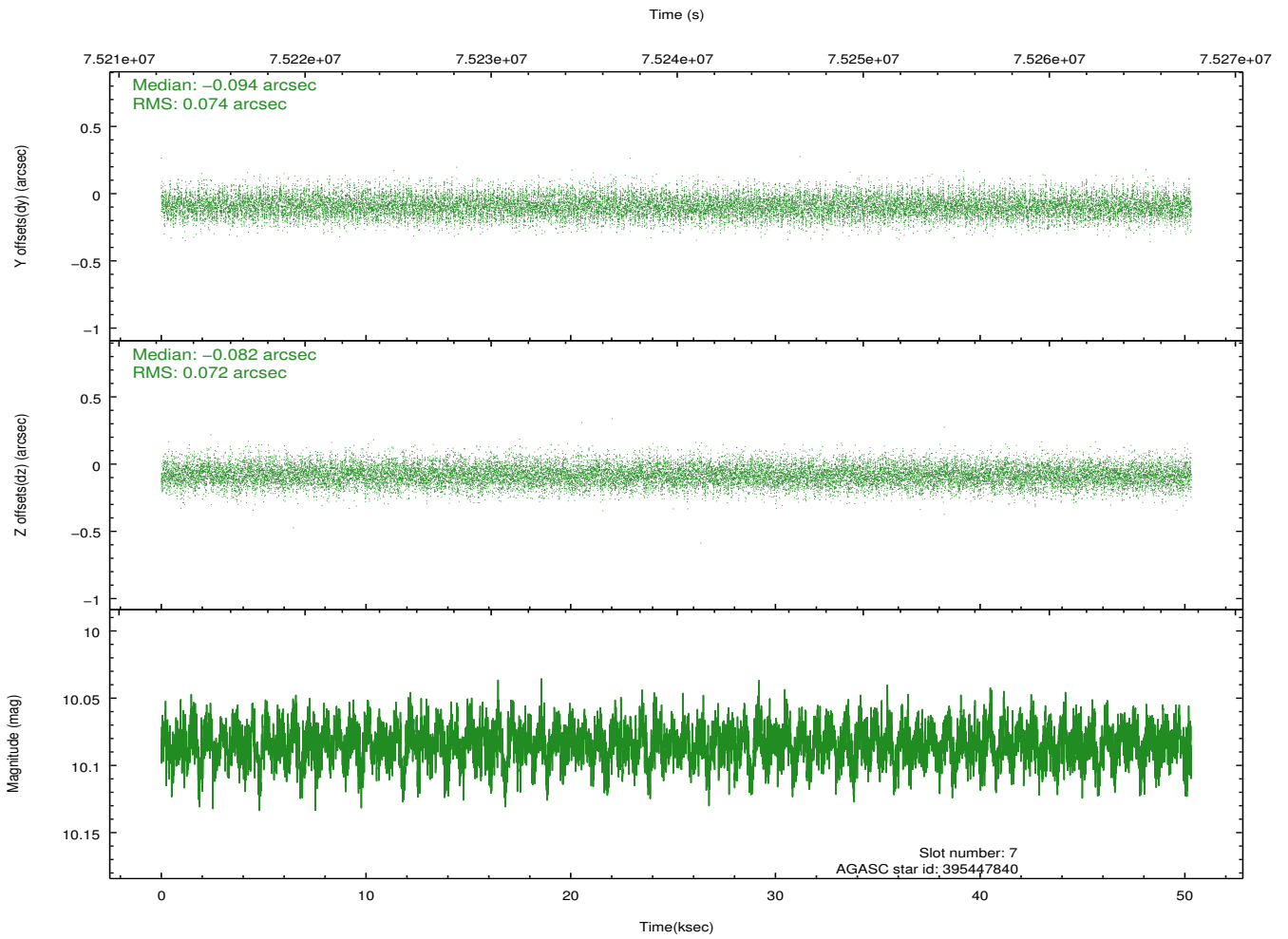
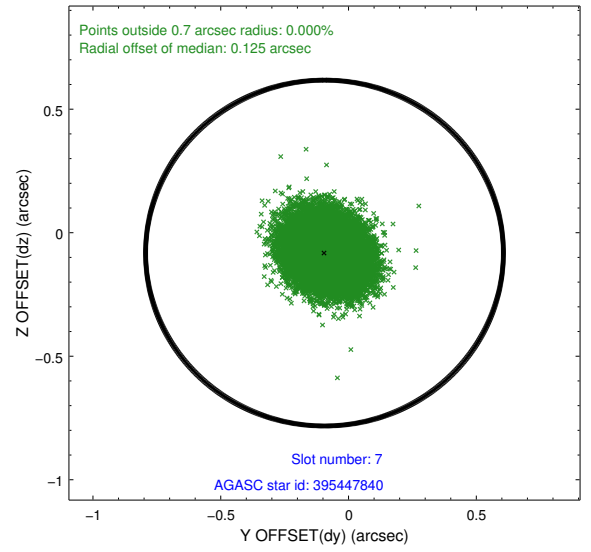
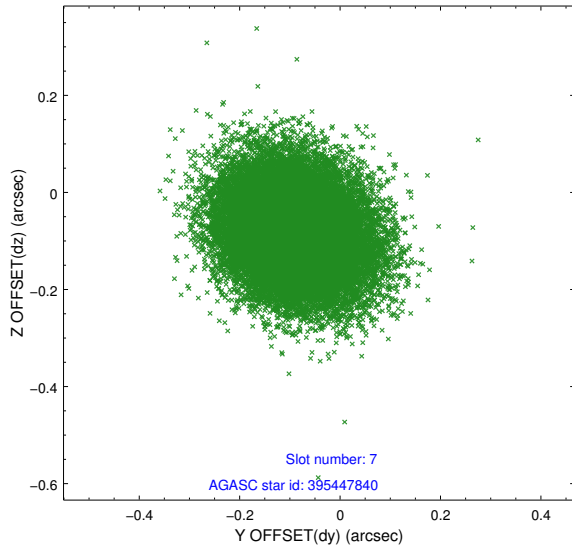
2.4.3 Slot 5



2.4.4 Slot 6

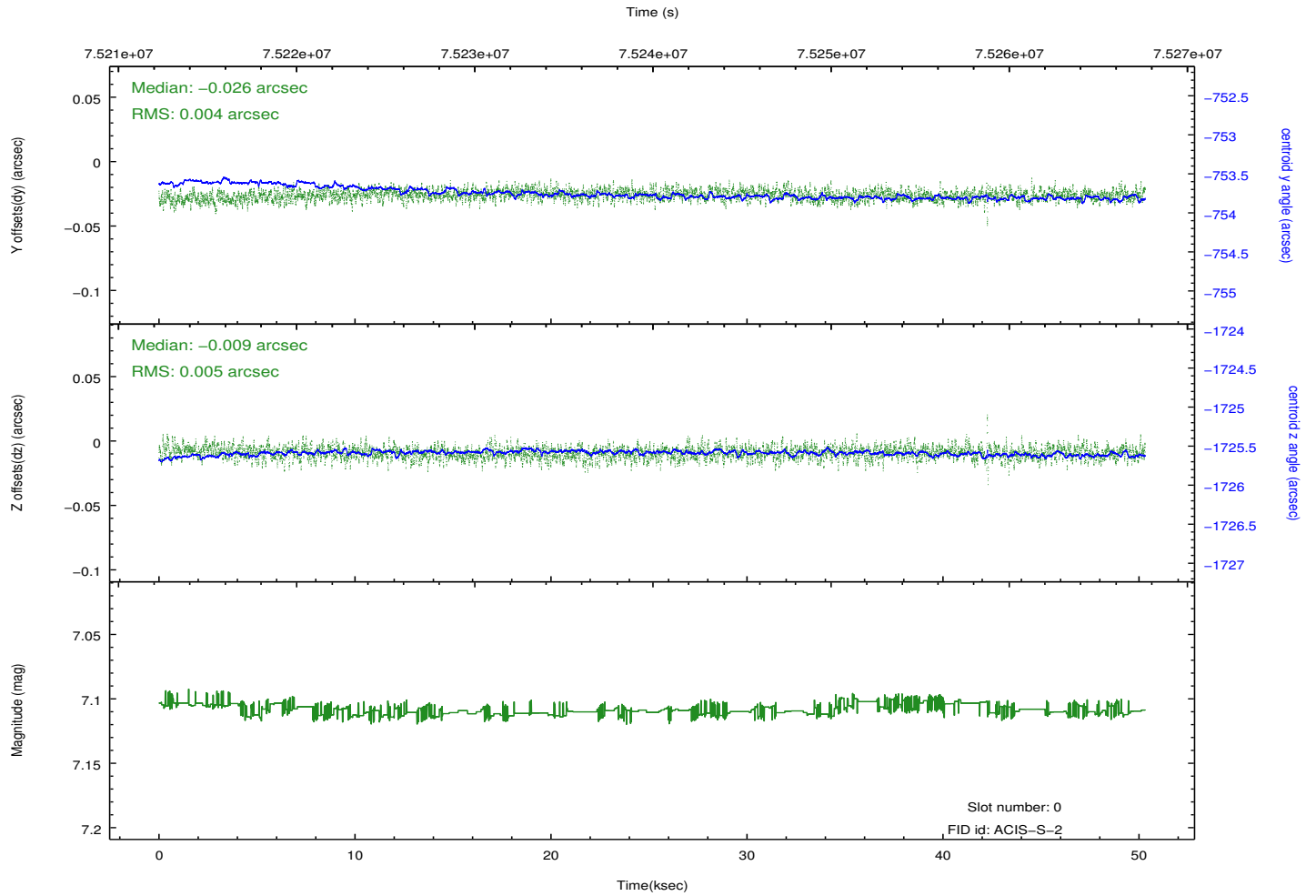
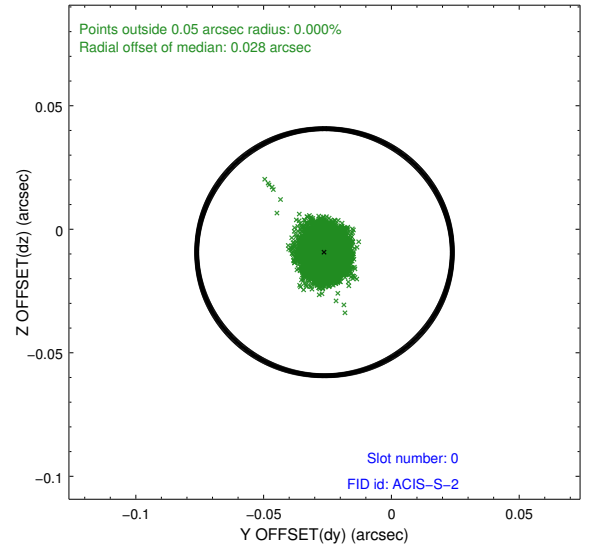
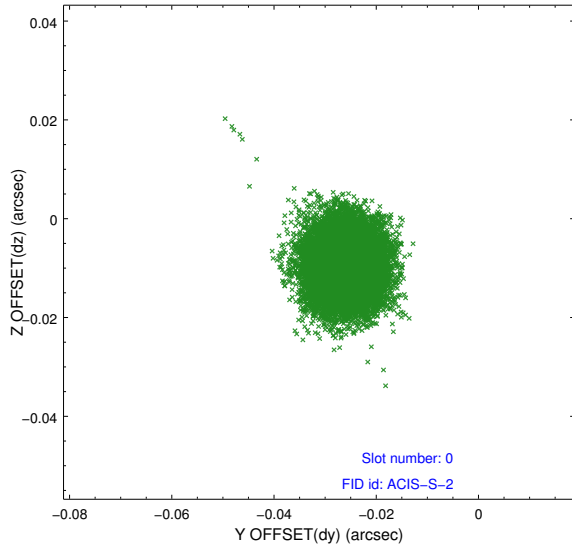


2.4.5 Slot 7

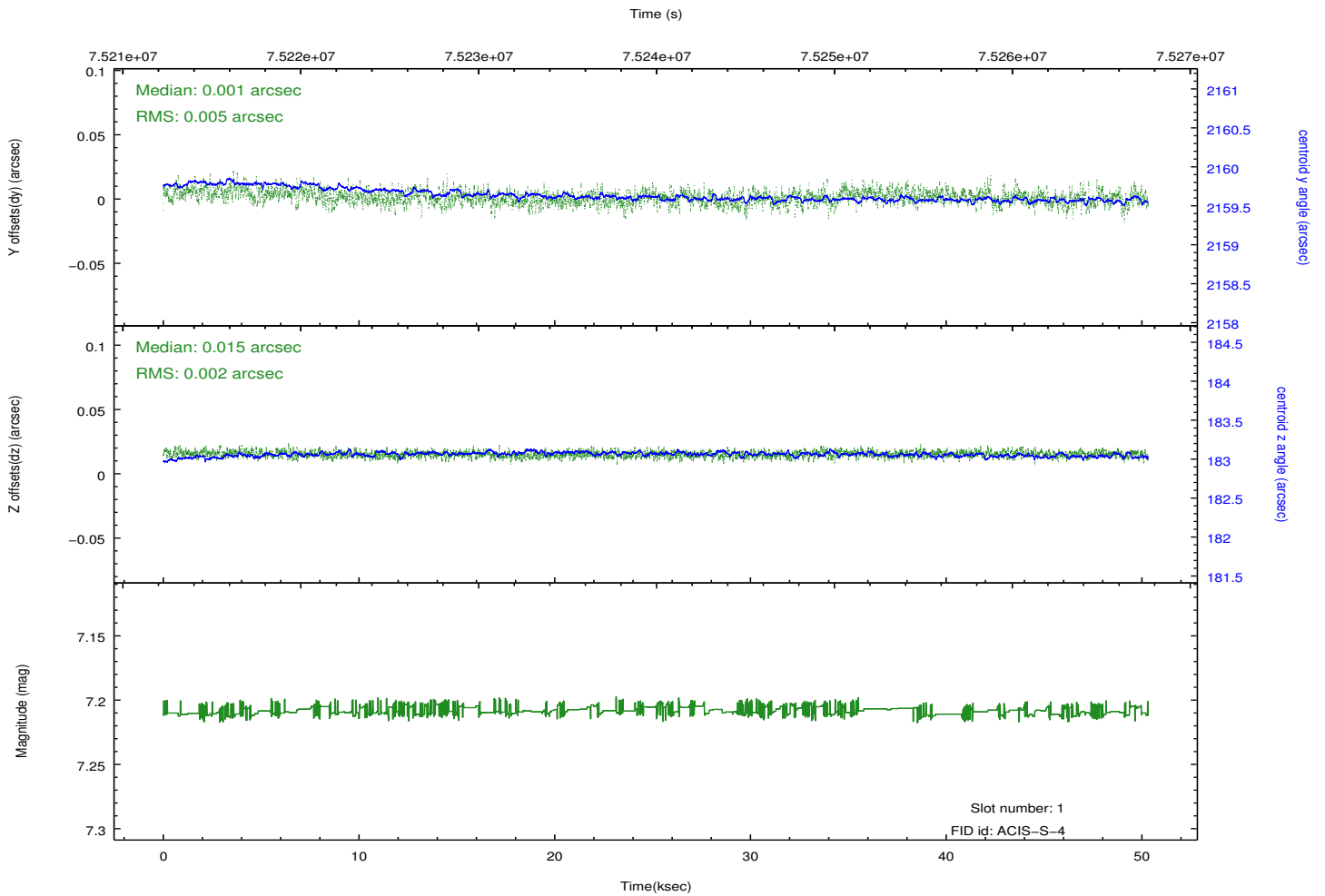
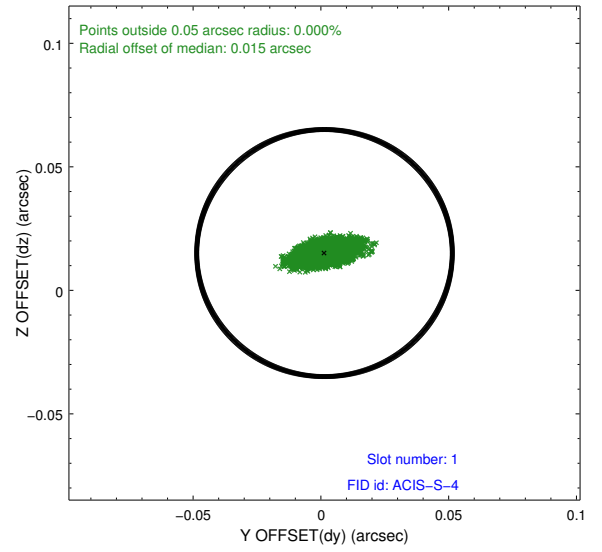
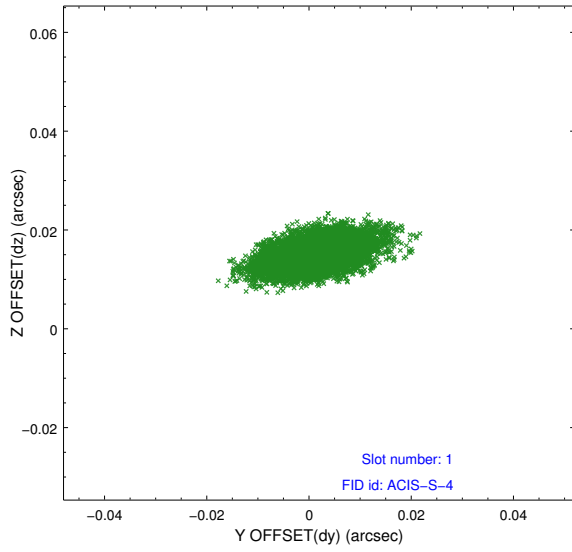


2.5 FID Slots

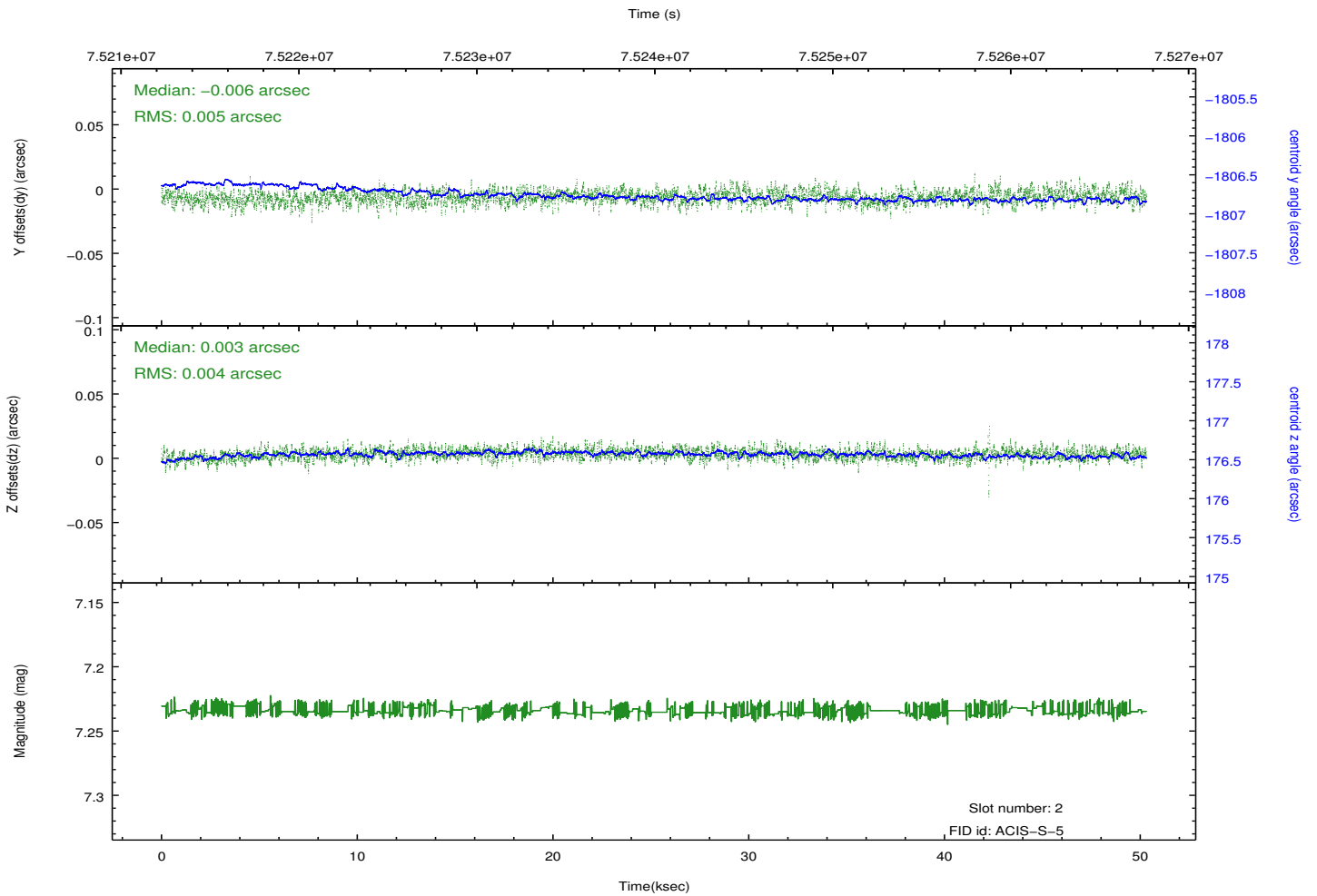
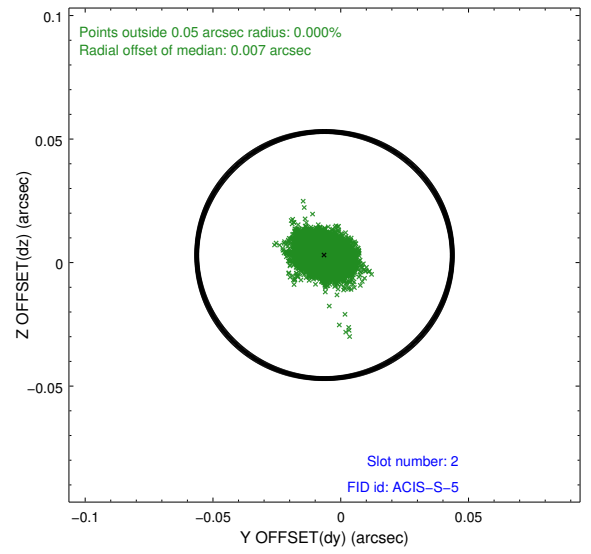
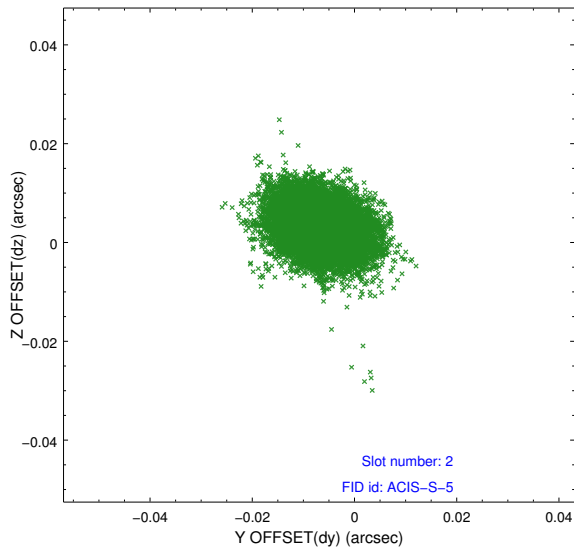
2.5.1 Slot 0



2.5.2 Slot 1



2.5.3 Slot 2



A Summary

A.1 Status

V&V Scientist	Beth Sundheim
V&V Date (YYYY-MM-DD)	2012.08.31
V&V Edition	1
V&V Disposition and Status	OK
V&V Charge Time	49.776

A.2 Comments

Charge time for this observation remains at previous value of 49.776 ksec.

Roll preference met.