

V&V Reference Report

L2 ASCDS Version : 8.4.5

Observation 962 - L2 Version 4
Chandra X-Ray Center

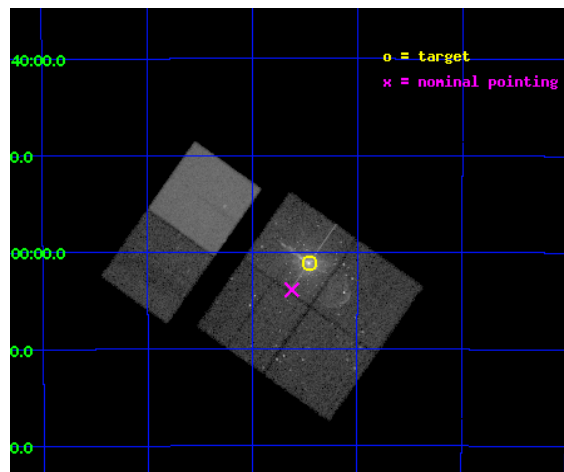
L2 Processing Date : Aug 27 2012

Contents

1	Front	2
2	OBI	3
2.1	OBI	3
2.1.1	Images	3
2.1.2	Bias	3
2.1.3	Parameters	4
2.1.4	Events	4
2.2	Compared Parameters	5
2.3	Aspect	6
2.4	Star Slots	9
2.4.1	Slot 3	9
2.4.2	Slot 4	10
2.4.3	Slot 5	11
2.4.4	Slot 6	12
2.4.5	Slot 7	13
2.5	FID Slots	14
2.5.1	Slot 0	14
2.5.2	Slot 1	15
2.5.3	Slot 2	16
A	Summary	17
A.1	Status	17
A.2	Comments	17

1 Front

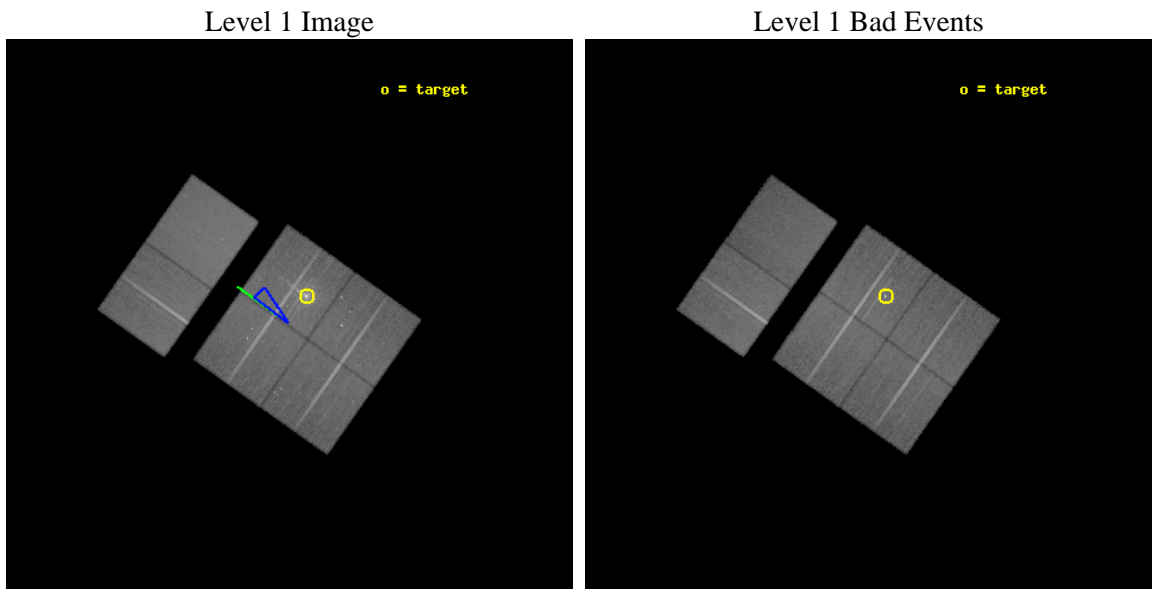
seq_num	600112	Sequence number
obs_id	962	Observation id
title	NGC5128: BINARY SOURCES IN THE NEAREST ELLIPTICAL GALAXY	Proposal
observer	Dr. Stephen Murray	Principal investigator
object	NGC 5128	Source name
dtycycle	0	
cycle	P	events from which exps? Prim/Second/Both
ra_targ	201.365042	Observer's specified target RA [deg]
dec_targ	-43.019139	Observer's specified target Dec [deg]
ra_nom	201.40574374169	Nominal RA [deg]
dec_nom	-43.064968616711	Nominal Dec [deg]
roll_nom	305.23647579307	Nominal Roll [deg]
revision	4	Processing version of data
ontime	36972.482166782	Sum of GTIs [s]
livetime	36504.31433543	Livetime [s]
ontime0	36965.877066404	Sum of GTIs [s]
ontime1	36965.918136403	Sum of GTIs [s]
ontime2	36965.959206253	Sum of GTIs [s]
ontime3	36972.482166782	Sum of GTIs [s]
ontime6	36972.564246789	Sum of GTIs [s]
ontime7	36972.523206785	Sum of GTIs [s]
l2events	352811	Number of level 2 events



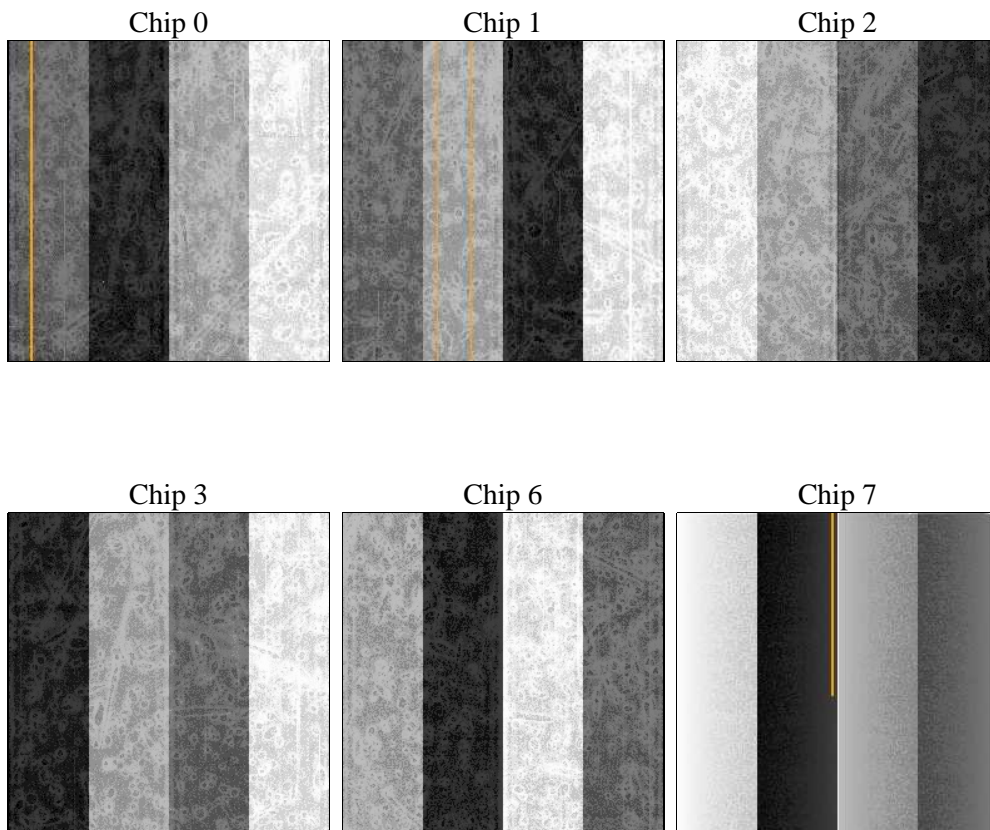
2 OBI

2.1 OBI

2.1.1 Images



2.1.2 Bias



2.1.3 Parameters

obi_num	1	Obi number	sched_exp_time	37000.000000	[s] Scheduled observation exposure time
ascdsver	8.4.5	Processing system revision	ontime	36972.482166782	Sum of GTIs [s]
caldbver	4.5.1.1	 	ontime0	36965.877066404	Sum of GTIs [s]
date	2012-08-27T19:52:27	Date and time of file creation	ontime1	36965.918136403	Sum of GTIs [s]
revision	4	Processing version of data	ontime2	36965.959206253	Sum of GTIs [s]
			ontime3	36972.482166782	Sum of GTIs [s]
			ontime6	36972.564246789	Sum of GTIs [s]
			ontime7	36972.523206785	Sum of GTIs [s]
			l1events	1710351	Number of level 1 events

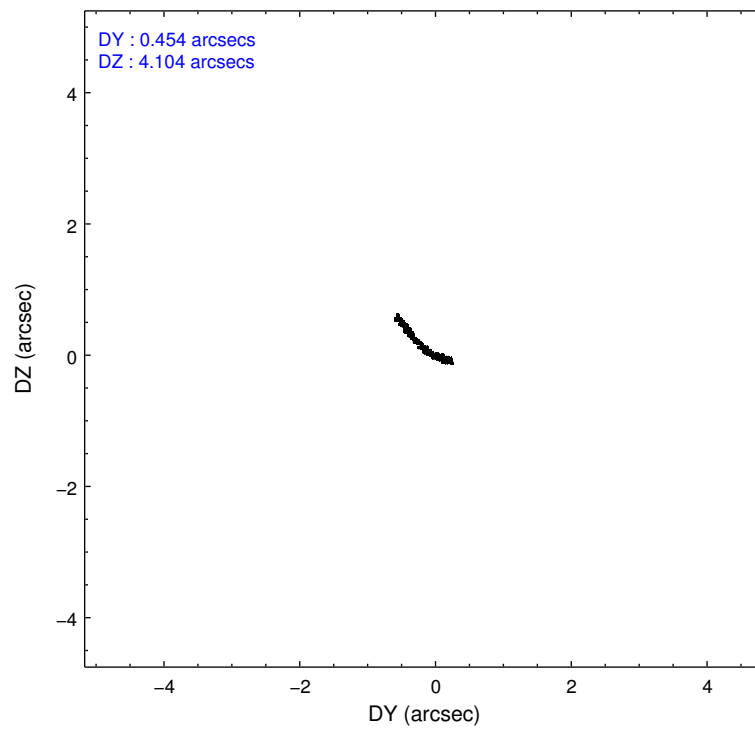
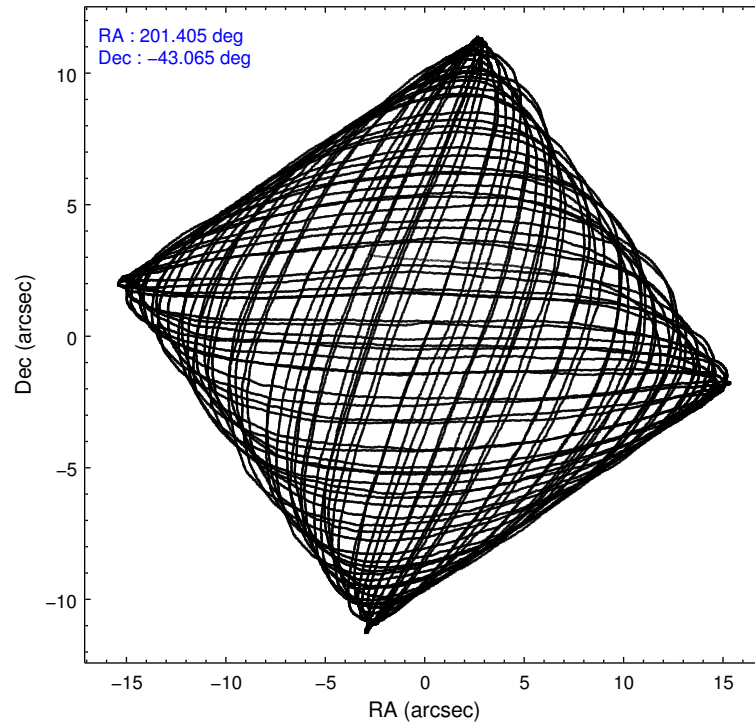
2.1.4 Events

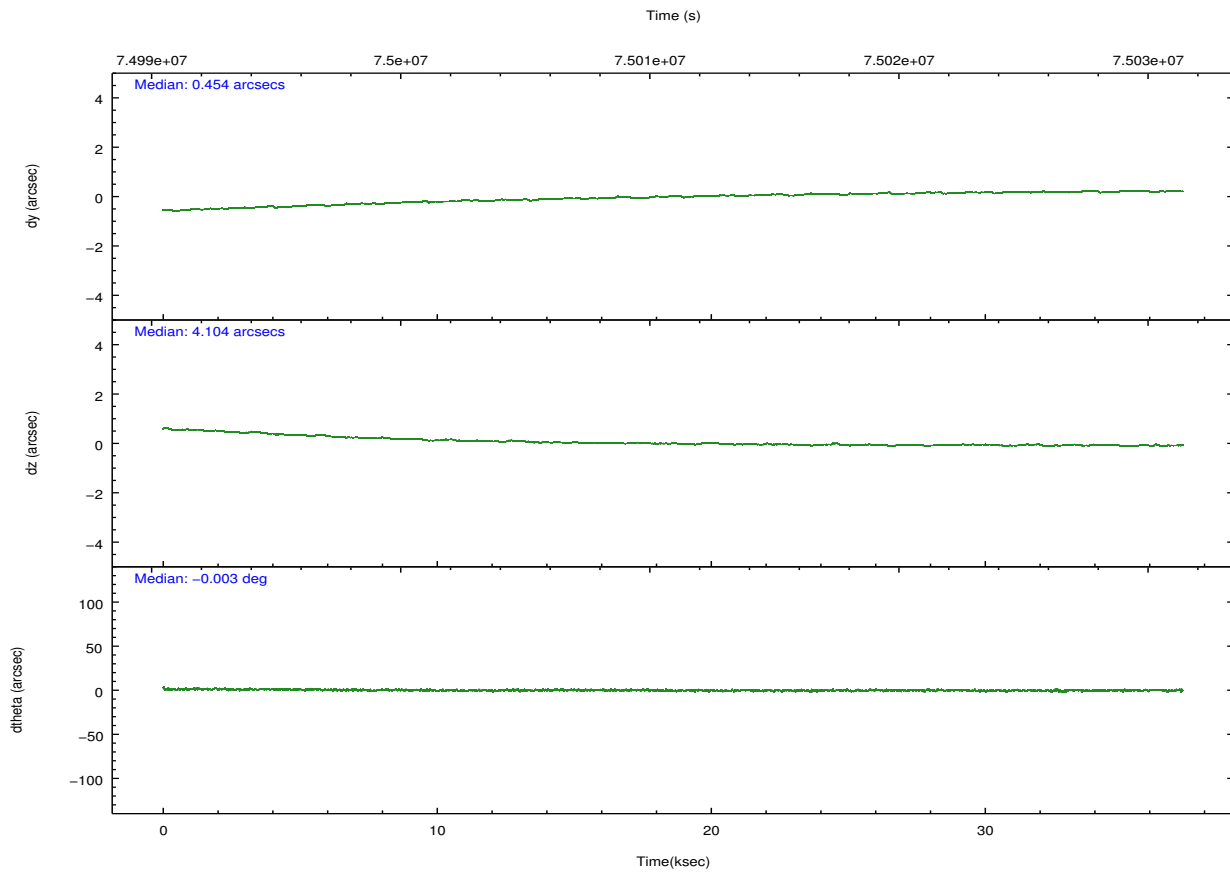
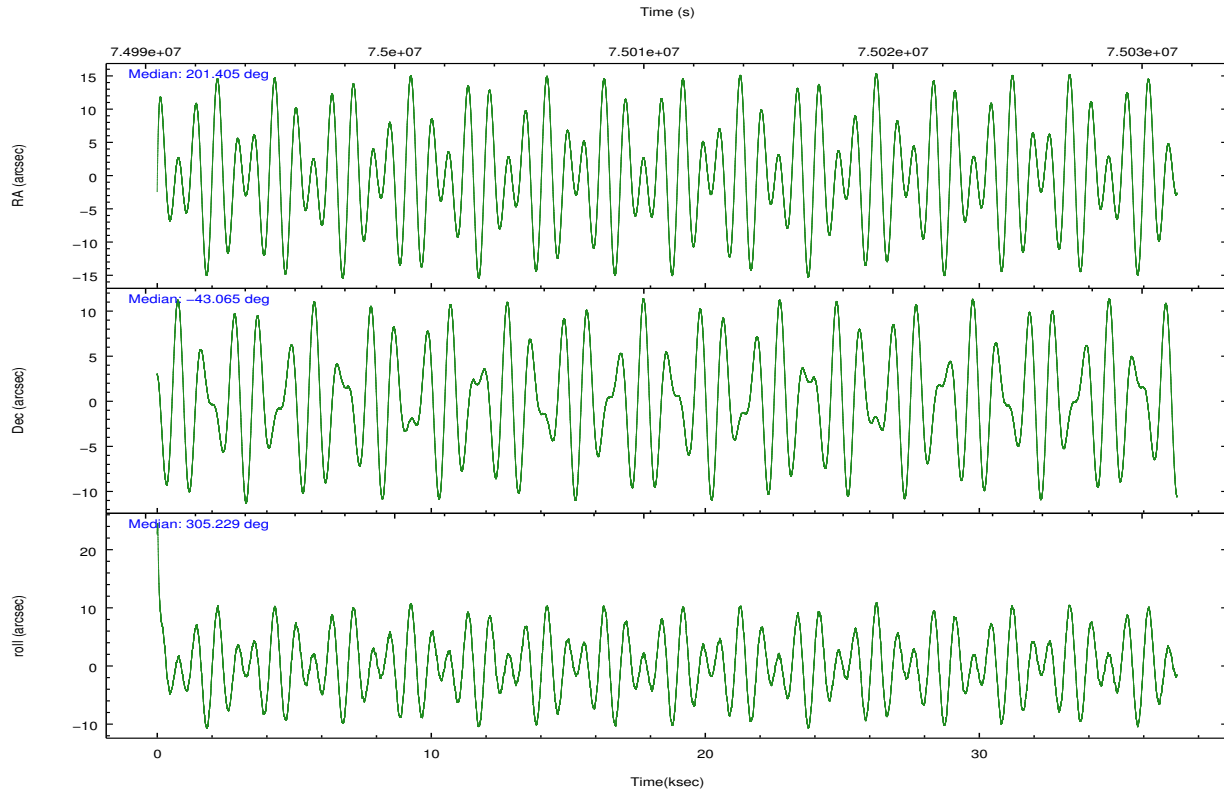
	ccd 0	ccd 1	ccd 2	ccd 3	ccd 6	ccd 7		ccd 0	ccd 1	ccd 2	ccd 3	ccd 6	ccd 7
level 1 events	245173	255094	274554	339463	280318	315749	grade 0 events	17541	22558	17709	61297	14697	16443
rejected events	209848	212583	239245	242600	247920	174321		7%	8%	6%	18%	5%	5%
rejected %	85%	83%	87%	71%	88%	55%	grade 1 events	151	209	141	1869	137	303
								0%	0%	0%	0%	0%	0%
							grade 2 events	6798	7258	6907	14278	6160	29028
								2%	2%	2%	4%	2%	9%
							grade 3 events	3045	3535	2883	5669	3032	13339
								1%	1%	1%	1%	1%	4%
							grade 4 events	2815	3372	2897	5521	2899	13181
								1%	1%	1%	1%	1%	4%
							grade 5 events	8023	8734	7790	10738	9924	29400
								3%	3%	2%	3%	3%	9%
							grade 6 events	5129	5792	4915	10108	5611	69451
								2%	2%	1%	2%	2%	21%
							grade 7 events	201671	203636	231312	229983	237858	144604
								82%	79%	84%	67%	84%	45%

2.2 Compared Parameters

Parameter	Planned	Actual	Parameter	Planned	Actual
Instrument	ACIS	ACIS	Obspar format version number	7	7
Detector	ACIS-012367	ACIS-012367	Obspar file type	PREDICTED	ACTUAL
Grating	NONE	NONE	Obspar update status	NONE	UPDATED
Data mode	FAINT	FAINT	Number of optional ACIS chips dropped	0	0
Observation mode	POINTING	POINTING	On-chip summing requested	N	N
[deg] Pointing RA	201.371544	201.4057437416947	Subarray requested	NONE	NONE
[deg] Pointing Dec	-43.053247	-43.06496861671146	Alternating exposures requested	N	N
[deg] Pointing Roll	305.004435	305.2364757930724	[s] Primary exposure time	0.000000	3.2
[deg] Roll angle	315.000000	315.000000			
[deg] Roll tolerance	10.000000	10.000000			
Roll constraint allows 180D rotation	N	N			
[mm] SIM focus pos	-0.782348	-0.7809083437167272			
[mm] SIM defocus	0	0.001439871863259334			
[mm] SIM translation stage pos	-227.712463	-227.7139939163845			
[mm] SIM translation stage offset	-5.88	-5.878459086545149			
[s] Observation start time (MET)	74992540.184000	74991506.09965301			
Observation start date	2000-05-17T23:14:36	2000-05-17T22:58:26			
[s] Observation end time (MET)	75029540.184000	75030074.80107			
Observation end date	2000-05-18T09:31:16	2000-05-18T09:41:14			
Read mode	TIMED	TIMED			

2.3 Aspect





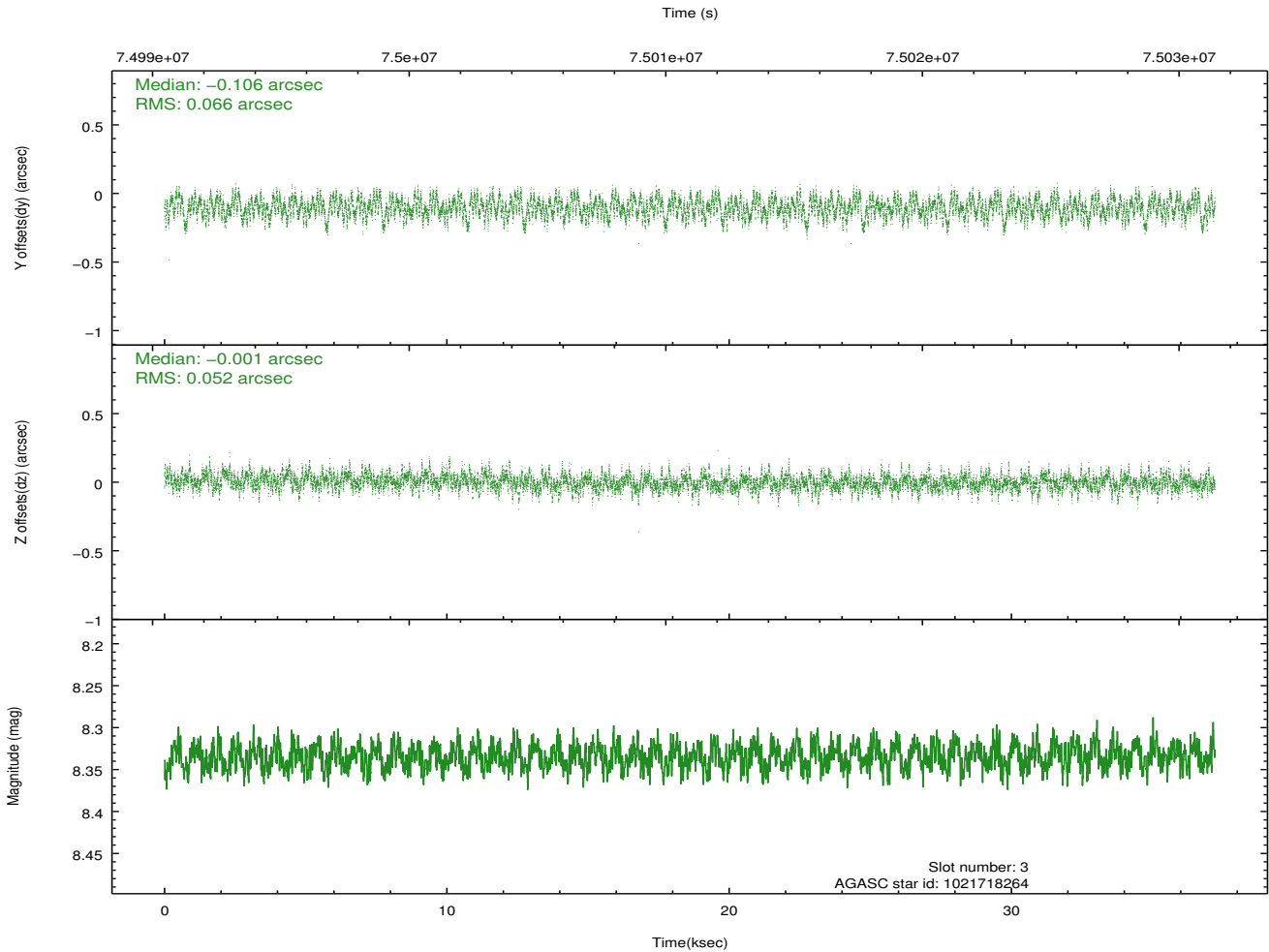
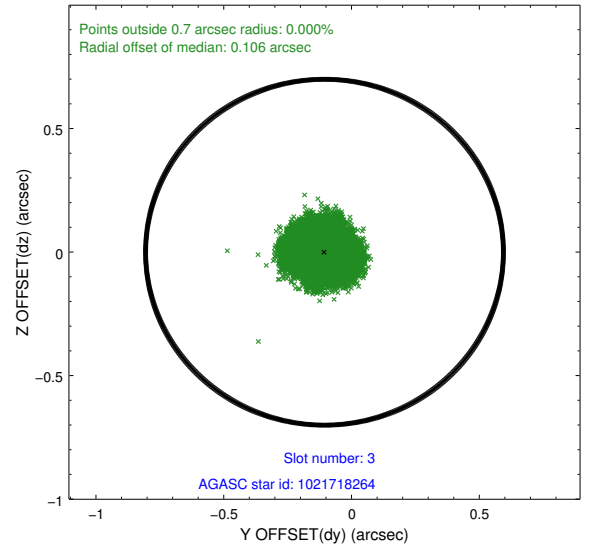
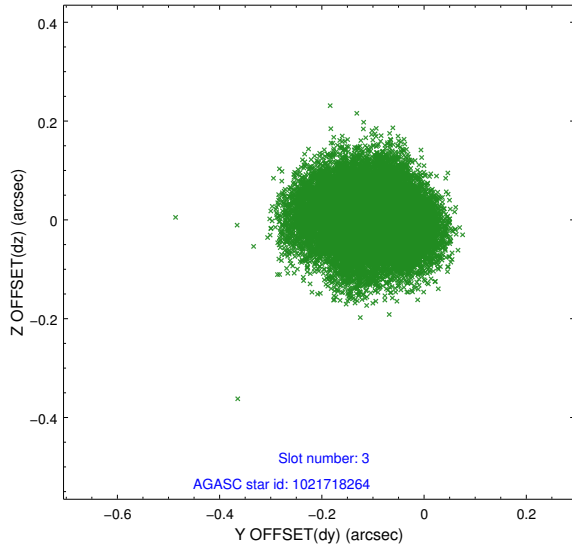
Slot Statistics

slot	status	id	mag	n_pts	med_dy	med_dz	dr1	dr2	ra	dec	mean_y	mean_z
0	FID	ACIS-I-2	7.16	9077	-0.042	-0.080	0.017	0.025	0.000000	0.000000	-755.15	-953.82
1	FID	ACIS-I-4	7.16	9076	-0.039	0.053	0.020	0.043	0.000000	0.000000	2158.86	952.46
2	FID	ACIS-I-5	7.22	9077	-0.024	0.094	0.015	0.024	0.000000	0.000000	-1808.64	949.57
3	GUIDE	1021718264	8.33	18153	-0.106	-0.001	0.092	0.141	202.114846	-42.795539	373.88	2136.46
4	GUIDE	1021721304	9.65	18147	-0.110	0.075	0.088	0.144	201.117326	-42.480412	-2074.97	630.33
5	GUIDE	1022238904	8.92	18149	0.175	-0.155	0.103	0.163	201.252566	-43.922438	2387.39	-2046.84
6	GUIDE	1021721672	9.53	18144	0.070	0.025	0.083	0.134	201.740358	-43.079729	636.98	739.32
7	GUIDE	1022231952	10.53	17998	-0.027	0.057	0.147	0.243	200.514966	-43.318830	-493.37	-2391.77

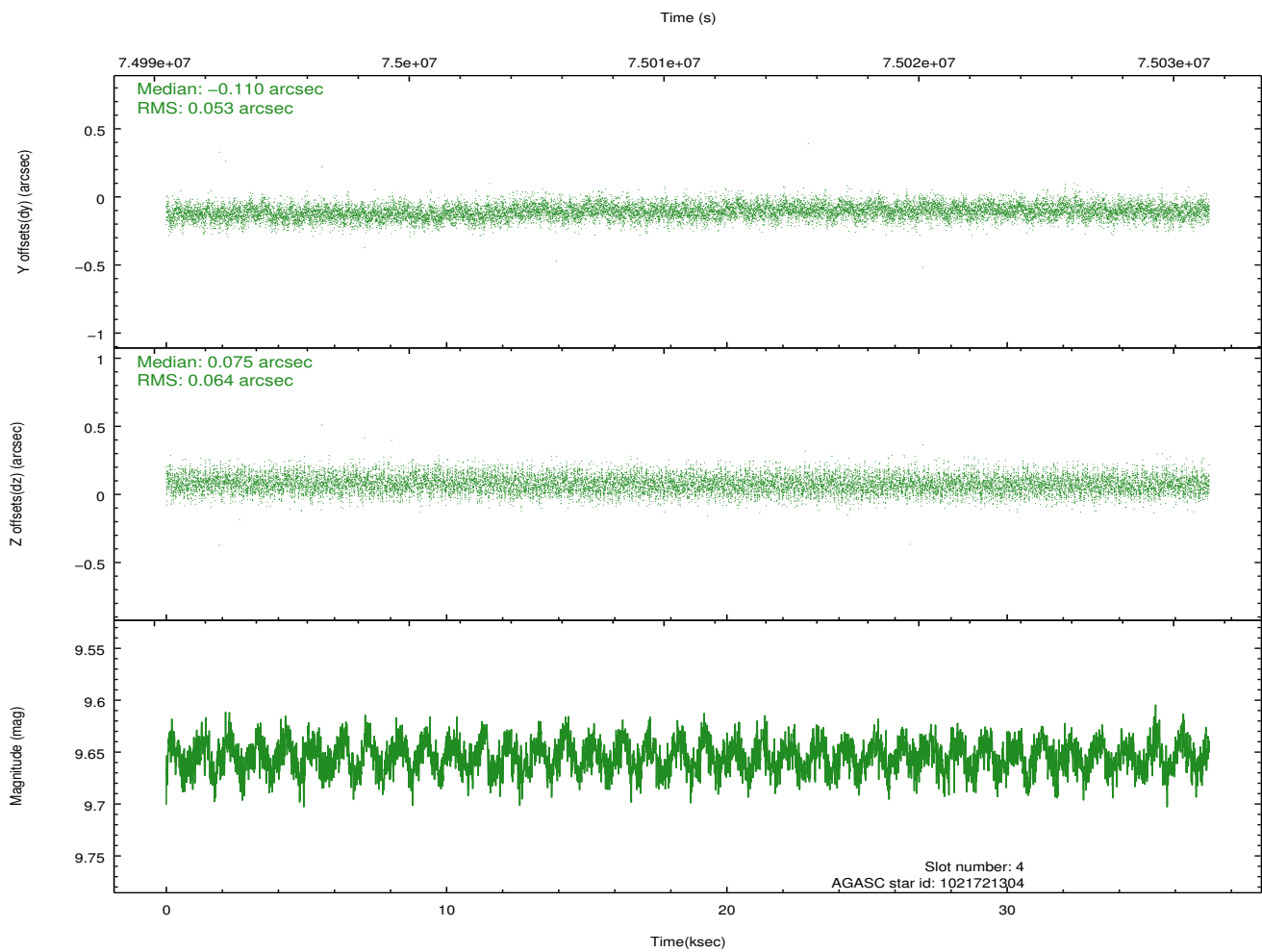
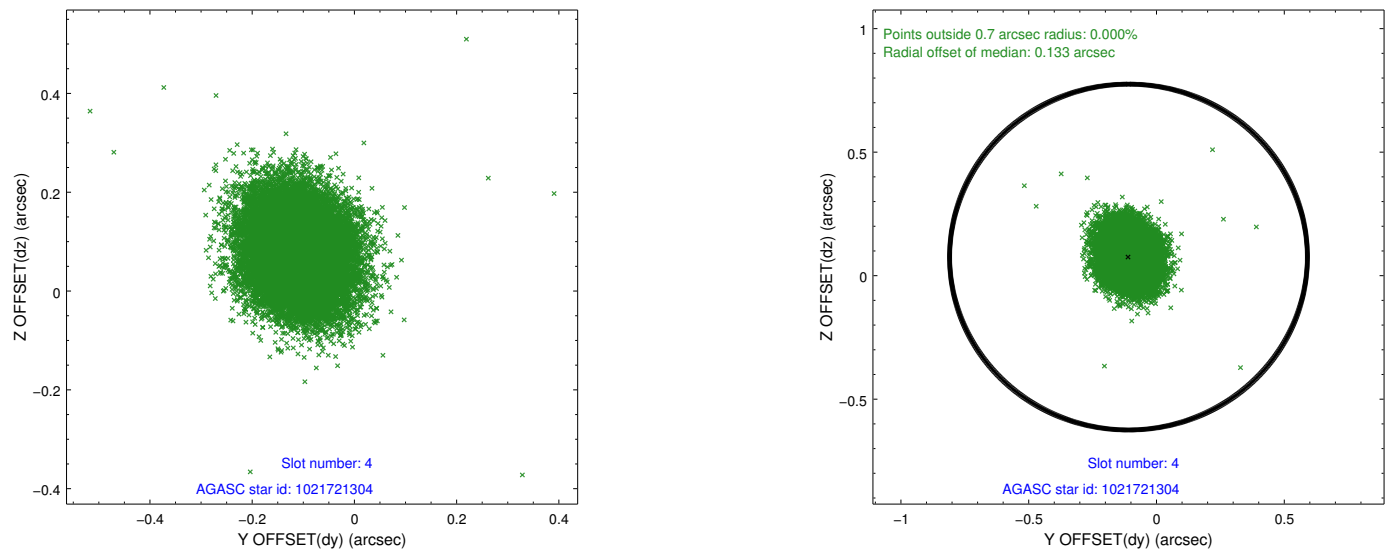
∞

2.4 Star Slots

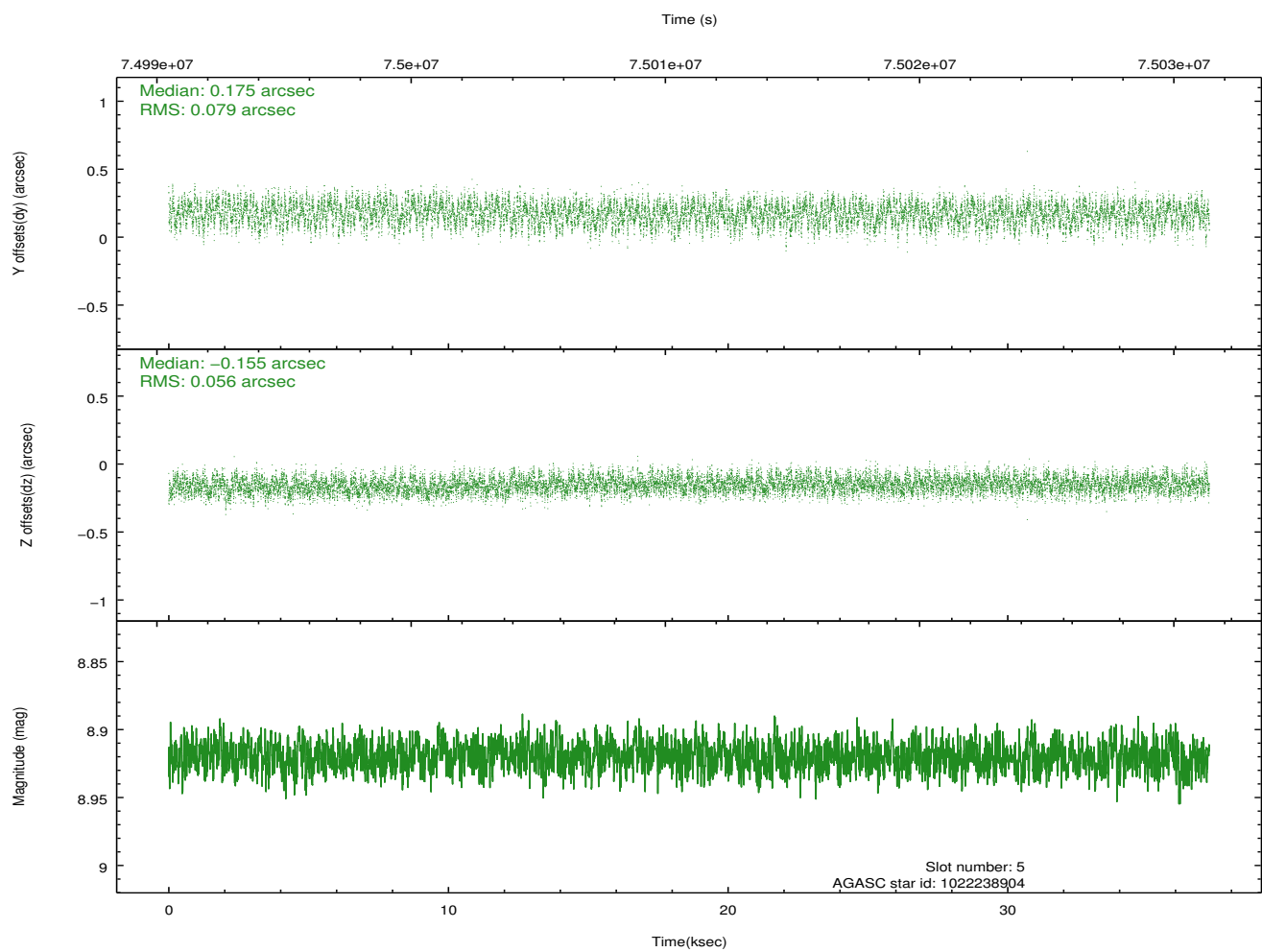
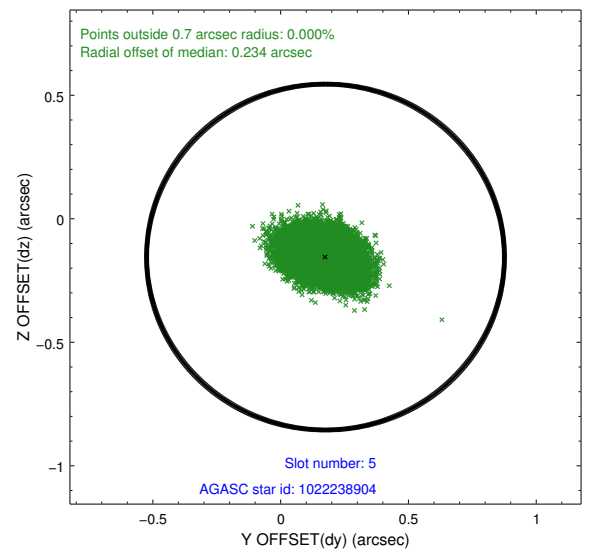
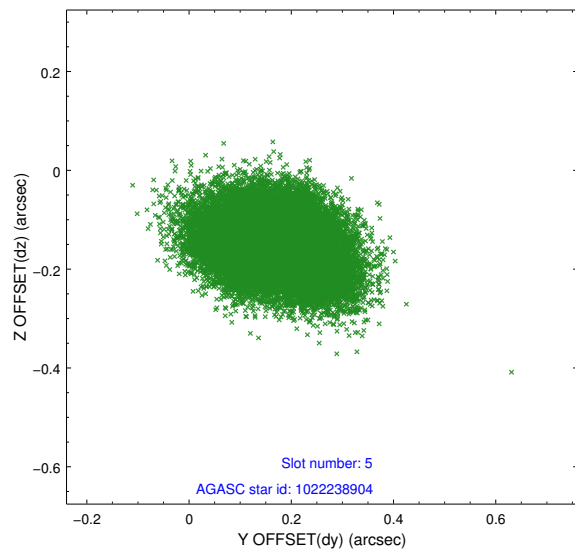
2.4.1 Slot 3



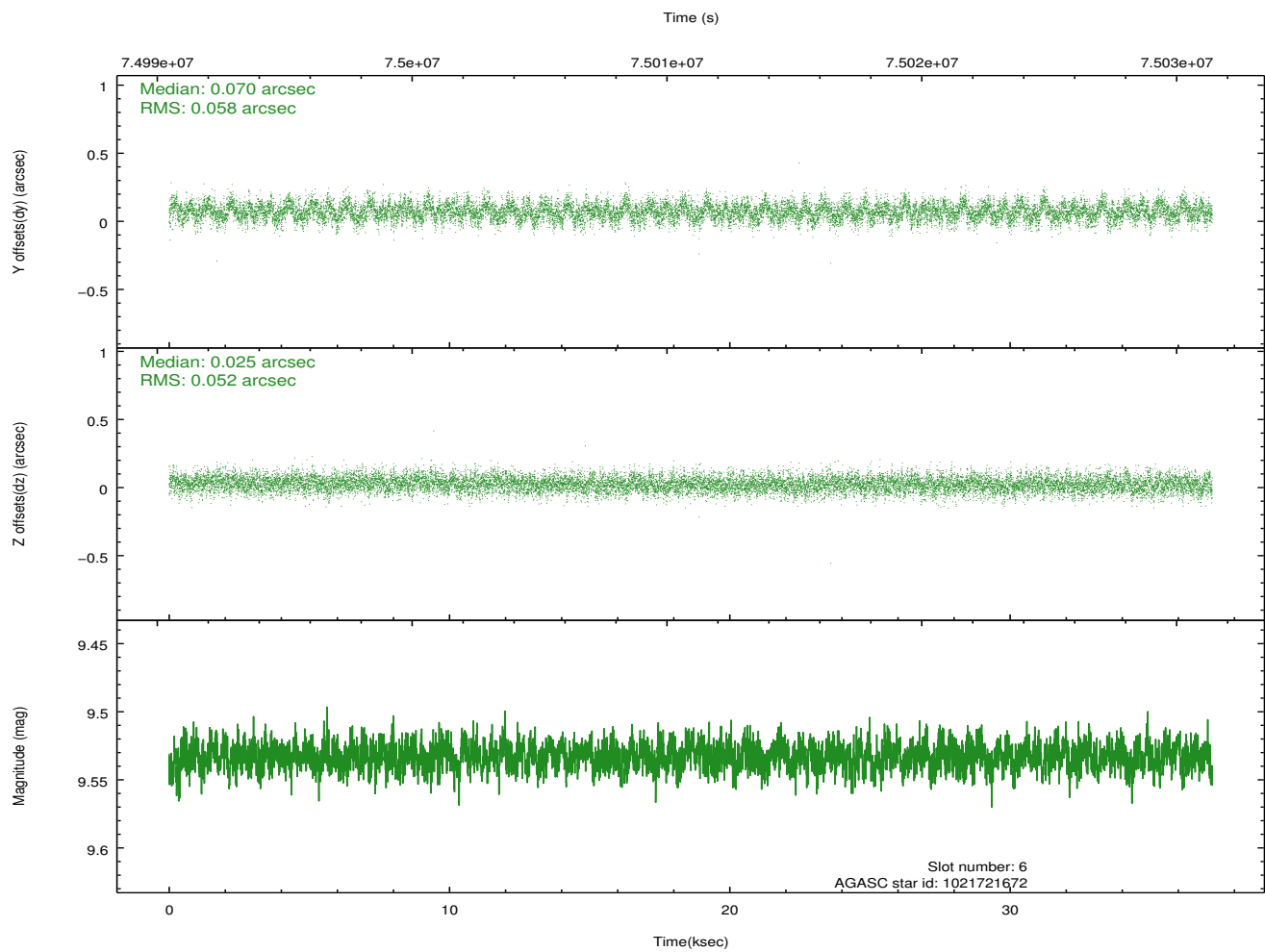
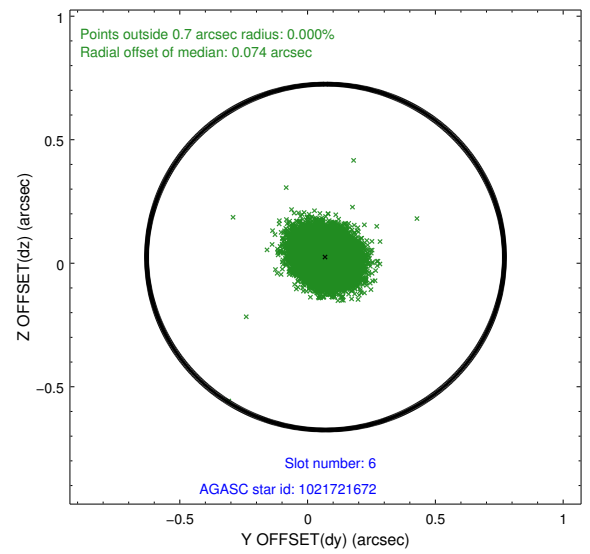
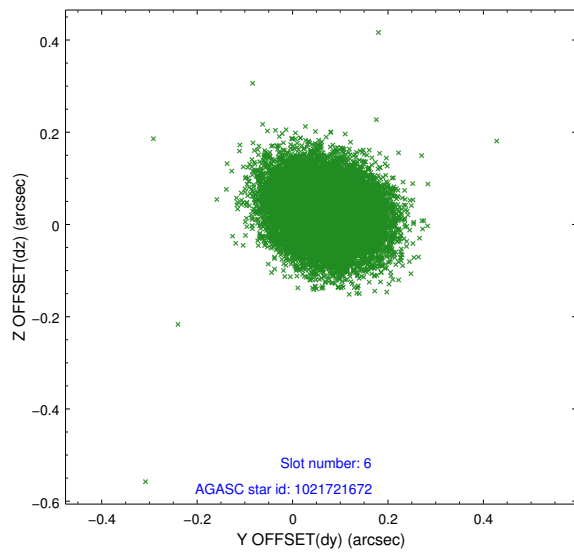
2.4.2 Slot 4



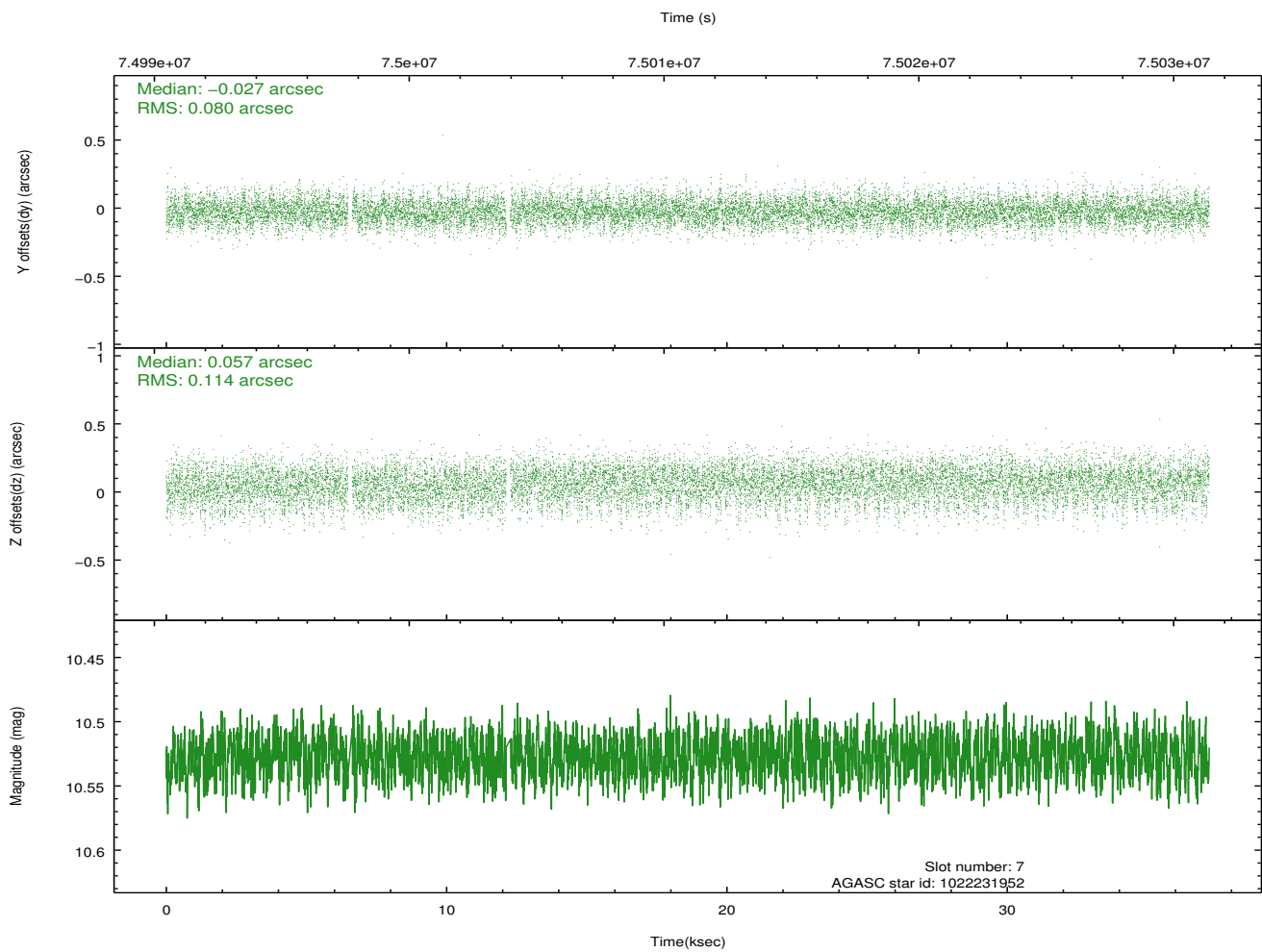
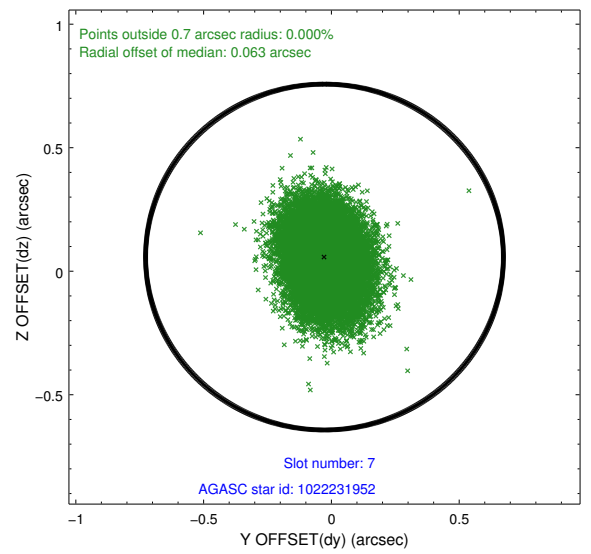
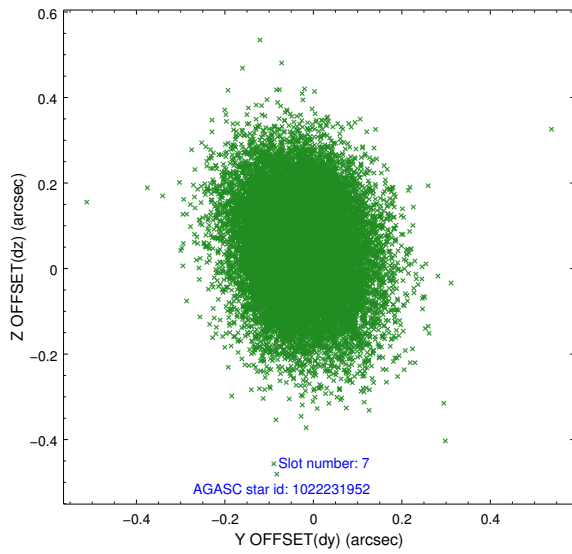
2.4.3 Slot 5



2.4.4 Slot 6

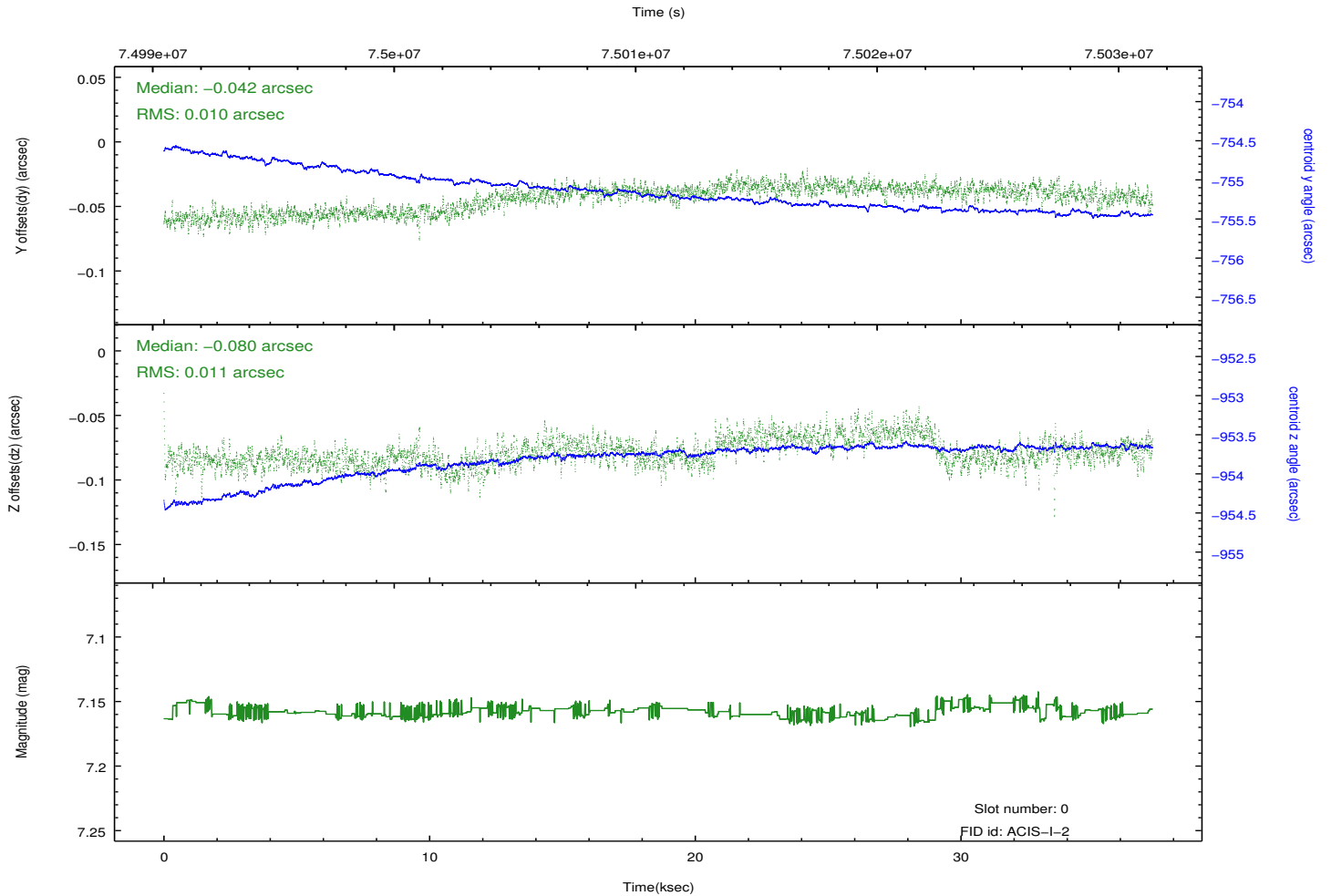
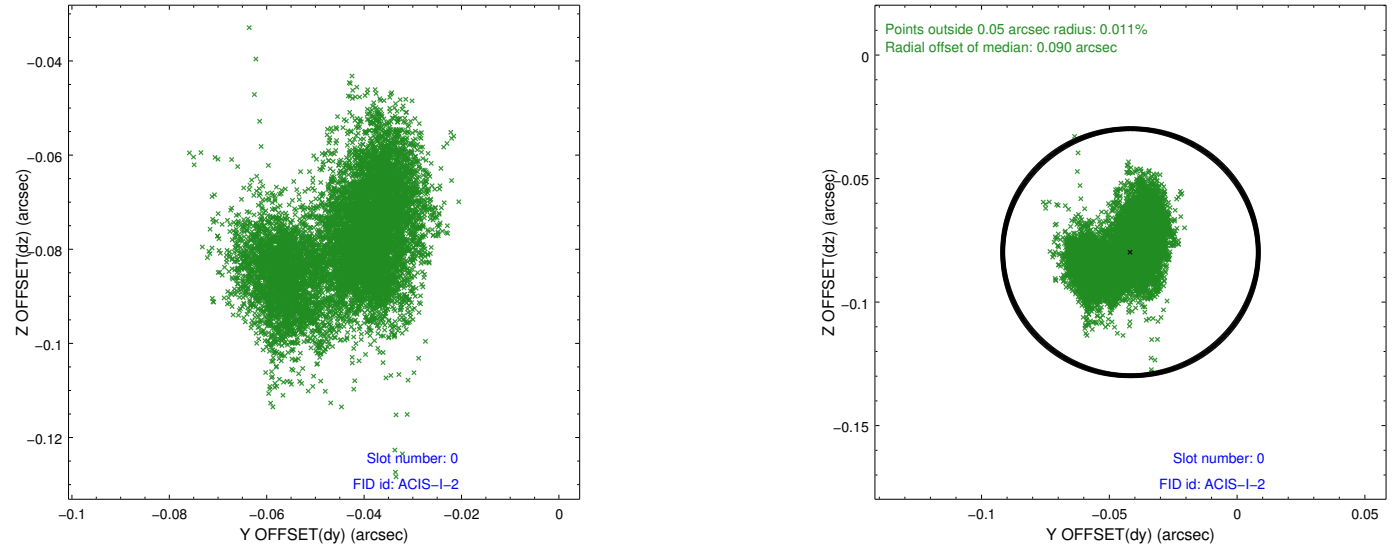


2.4.5 Slot 7

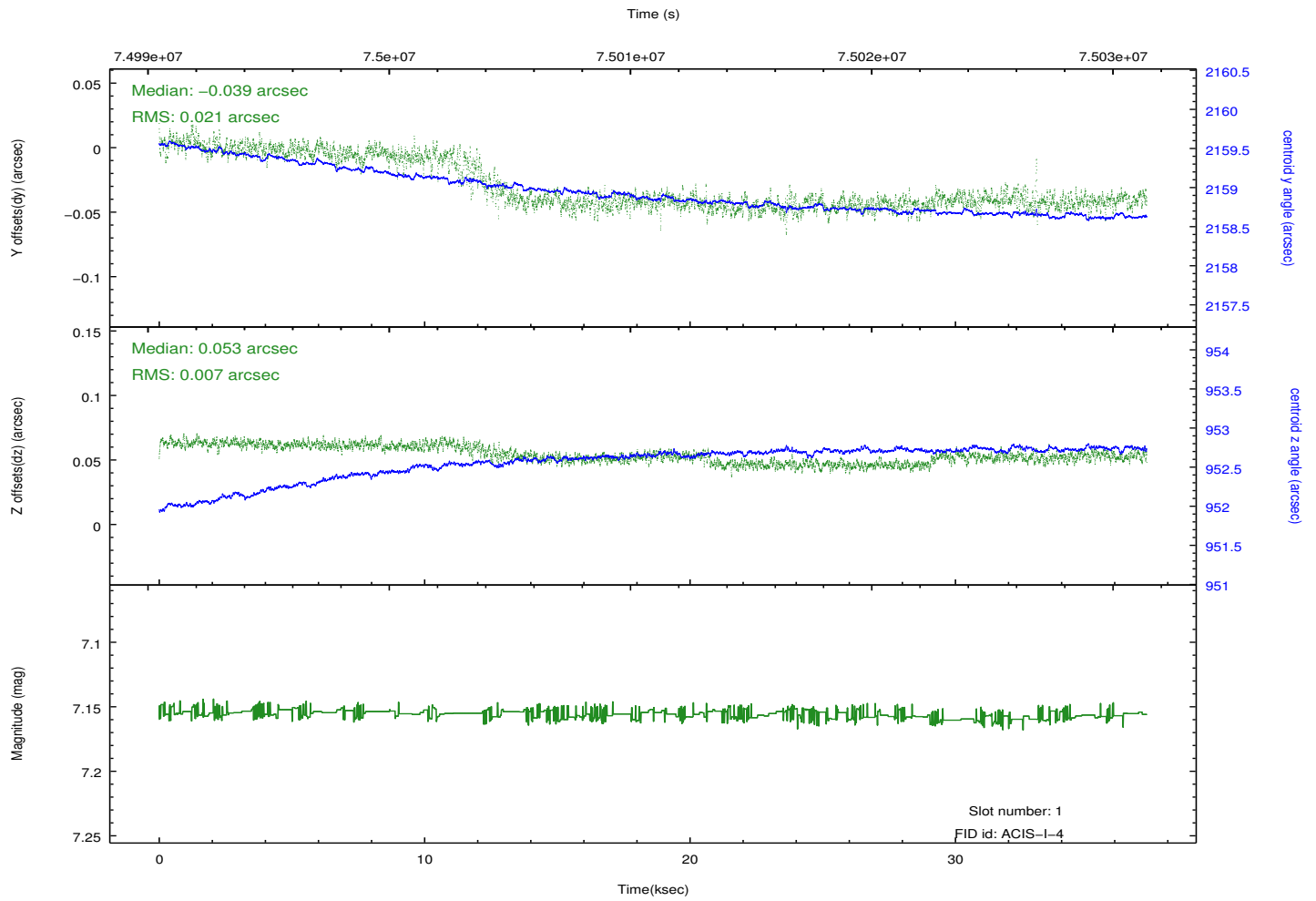
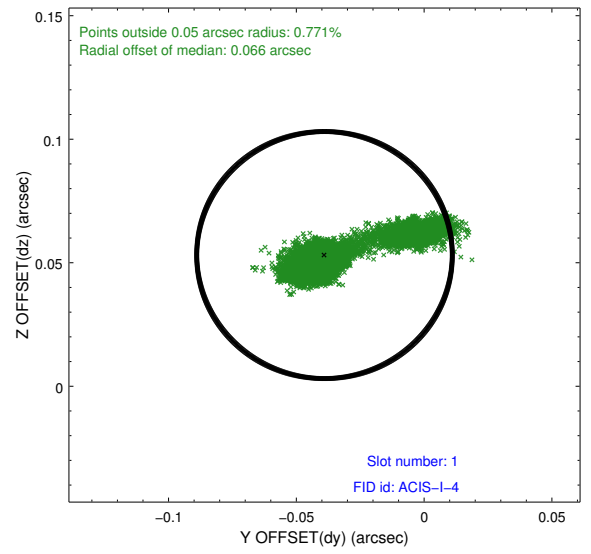
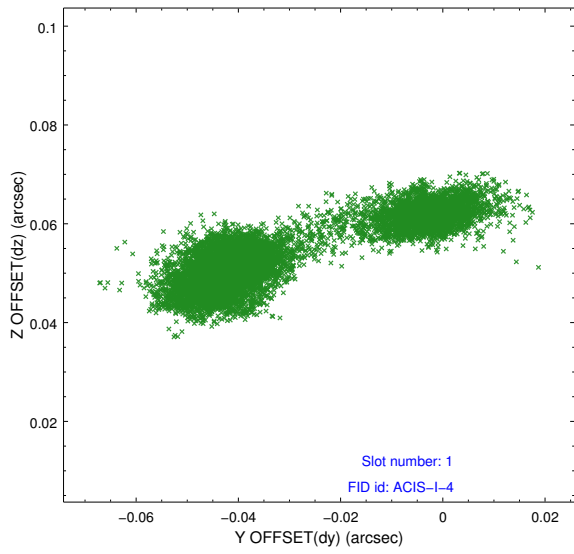


2.5 FID Slots

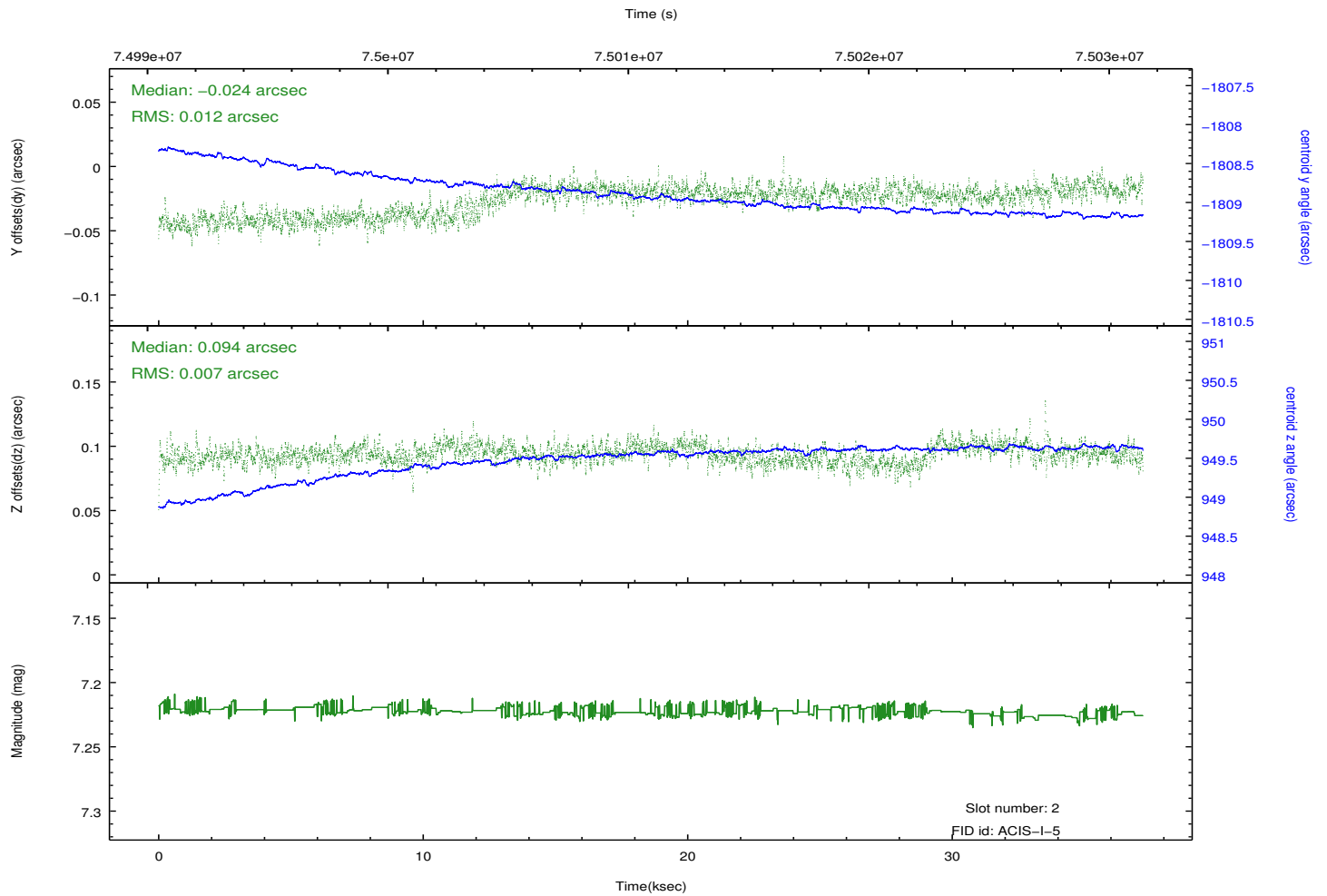
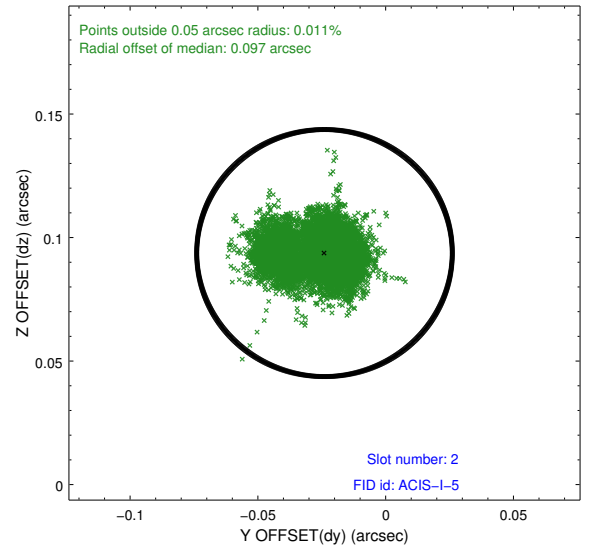
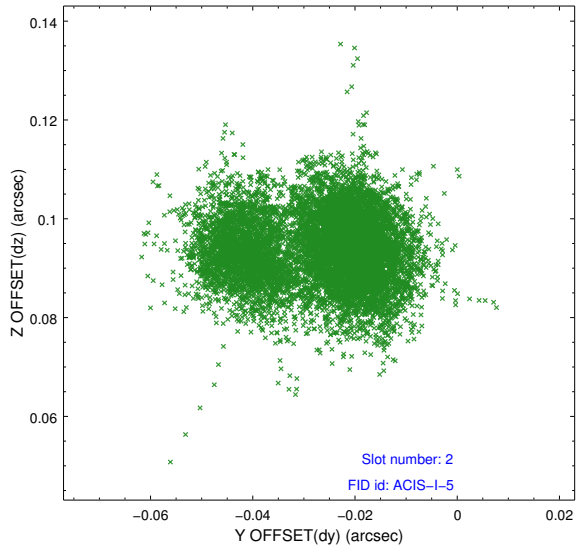
2.5.1 Slot 0



2.5.2 Slot 1



2.5.3 Slot 2



A Summary

A.1 Status

V&V Scientist	Jen Lauer
V&V Date (YYYY-MM-DD)	2012.08.30
V&V Edition	1
V&V Disposition and Status	OK
V&V Charge Time	36.972

A.2 Comments

Roll constraint met.