

# V&V Reference Report

## L2 ASCDS Version : 8.4.5

Observation 972 - L2 Version 3  
Chandra X-Ray Center

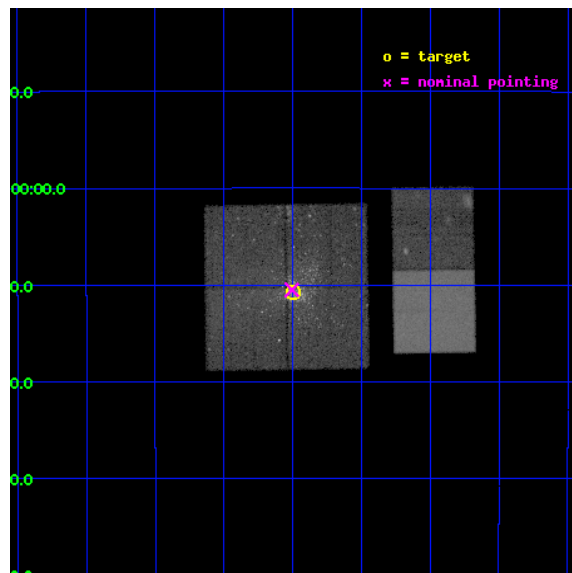
L2 Processing Date : Oct 3 2012

## Contents

<b>1</b>	<b>Front</b>	<b>2</b>
<b>2</b>	<b>OBI</b>	<b>3</b>
2.1	OBI . . . . .	3
2.1.1	Images . . . . .	3
2.1.2	Bias . . . . .	3
2.1.3	Parameters . . . . .	4
2.1.4	Events . . . . .	4
2.2	Compared Parameters . . . . .	5
2.3	Aspect . . . . .	6
2.4	Star Slots . . . . .	9
2.4.1	Slot 3 . . . . .	9
2.4.2	Slot 4 . . . . .	10
2.4.3	Slot 5 . . . . .	11
2.4.4	Slot 6 . . . . .	12
2.4.5	Slot 7 . . . . .	13
2.5	FID Slots . . . . .	14
2.5.1	Slot 0 . . . . .	14
2.5.2	Slot 1 . . . . .	15
2.5.3	Slot 2 . . . . .	16
<b>A</b>	<b>Summary</b>	<b>17</b>
A.1	Status . . . . .	17
A.2	Comments . . . . .	17

# 1 Front

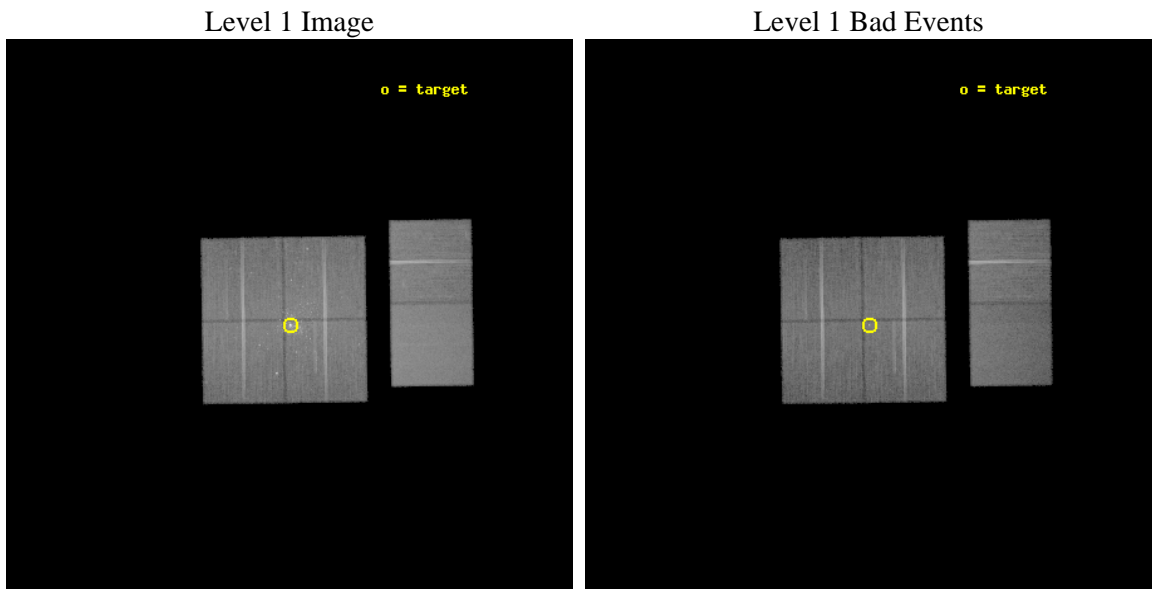
seq_num	200079	Sequence number
obs_id	972	Observation id
title	OBSERVATION OF M17	Proposal title
observer	Professor Gordon Garmire	Principal investigator
object	M17	Source name
dtcycle	0	&#160
cycle	P	events from which exps? Prim/Second/Both
ra_targ	275.124583	Observer's specified target RA [deg]
dec_targ	-16.179306	Observer's specified target Dec [deg]
ra_nom	275.12655364418	Nominal RA [deg]
dec_nom	-16.175021224	Nominal Dec [deg]
roll_nom	89.186858777713	Nominal Roll [deg]
revision	3	Processing version of data
ontime	39942.359076932	Sum of GTIs [s]
livetime	39436.584875899	Livetime [s]
ontime0	39945.600037187	Sum of GTIs [s]
ontime1	39945.600037187	Sum of GTIs [s]
ontime2	39945.600037187	Sum of GTIs [s]
ontime3	39942.359076932	Sum of GTIs [s]
ontime6	39945.600037187	Sum of GTIs [s]
ontime7	39945.600037187	Sum of GTIs [s]
l2events	341869	Number of level 2 events



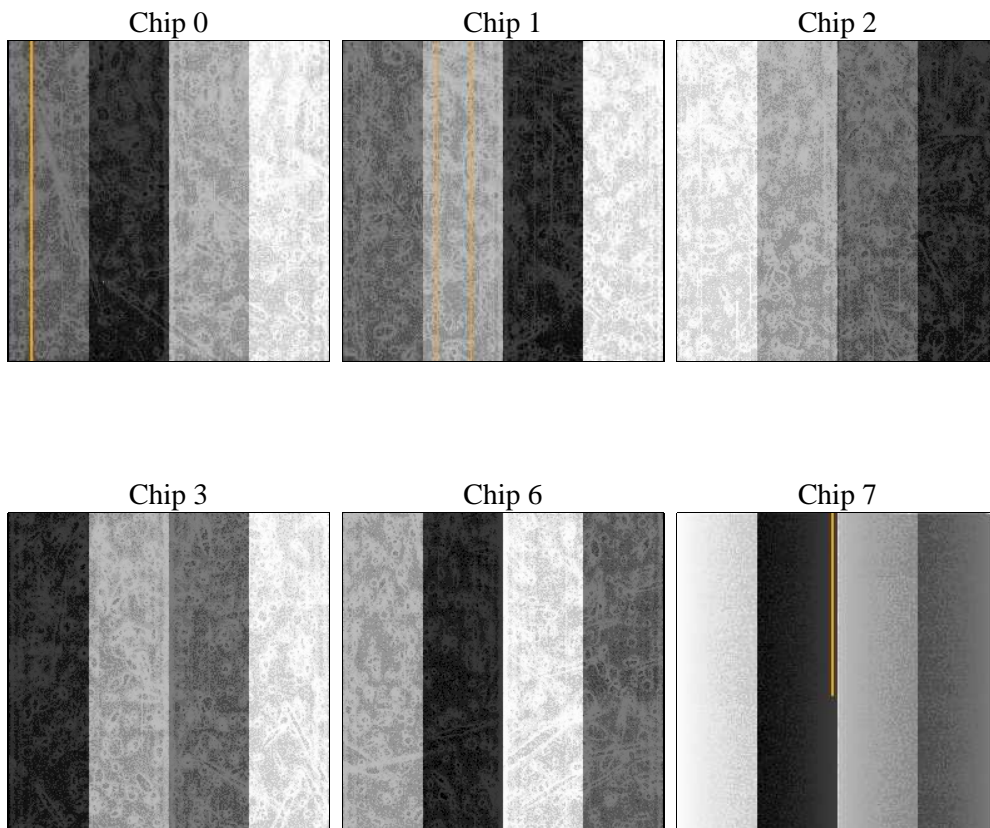
## 2 OBI

### 2.1 OBI

#### 2.1.1 Images



#### 2.1.2 Bias



### 2.1.3 Parameters

obi_num	2	Obi number	sched_exp_time	40000.000000	[s] Scheduled observation exposure time
ascdsver	8.4.5	Processing system revision	ontime	39942.359076932	Sum of GTIs [s]
caldbver	4.5.2	&#160	ontime0	39945.600037187	Sum of GTIs [s]
date	2012-10-03T03:50:56	Date and time of file creation	ontime1	39945.600037187	Sum of GTIs [s]
revision	3	Processing version of data	ontime2	39945.600037187	Sum of GTIs [s]
			ontime3	39942.359076932	Sum of GTIs [s]
			ontime6	39945.600037187	Sum of GTIs [s]
			ontime7	39945.600037187	Sum of GTIs [s]
			l1events	1690196	Number of level 1 events

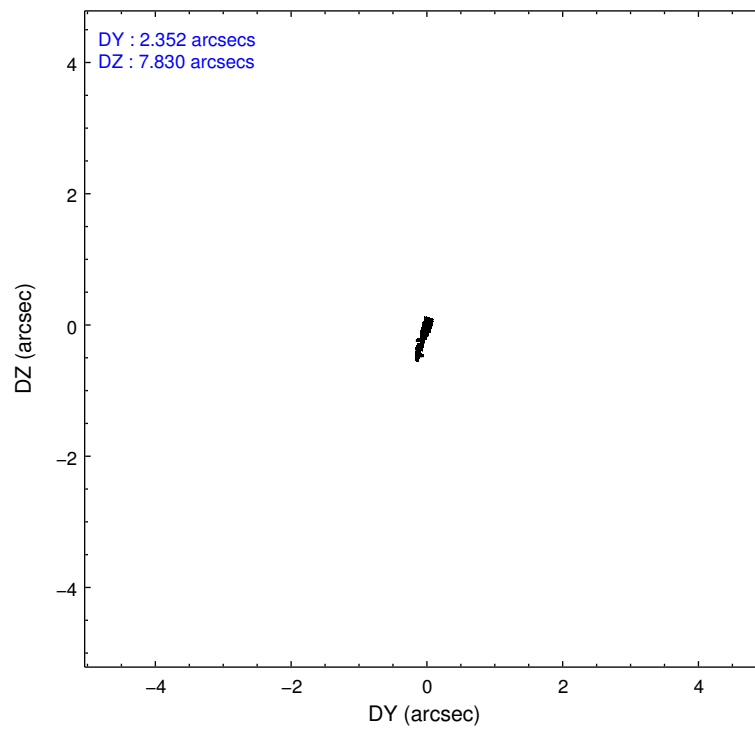
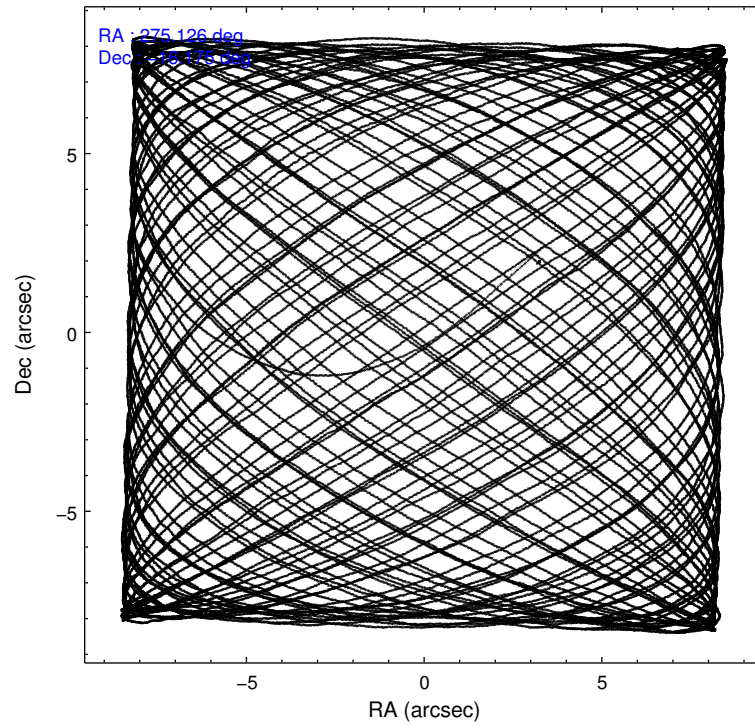
### 2.1.4 Events

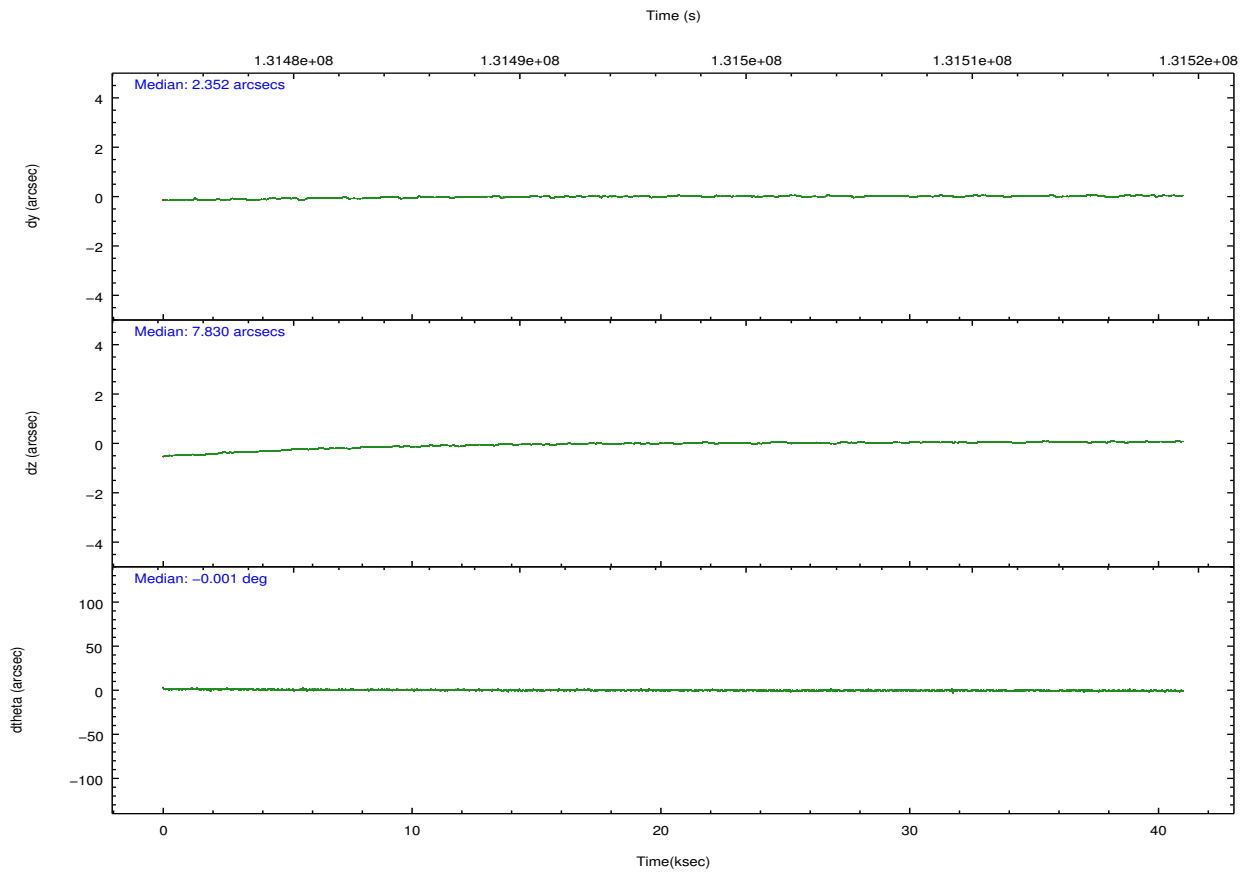
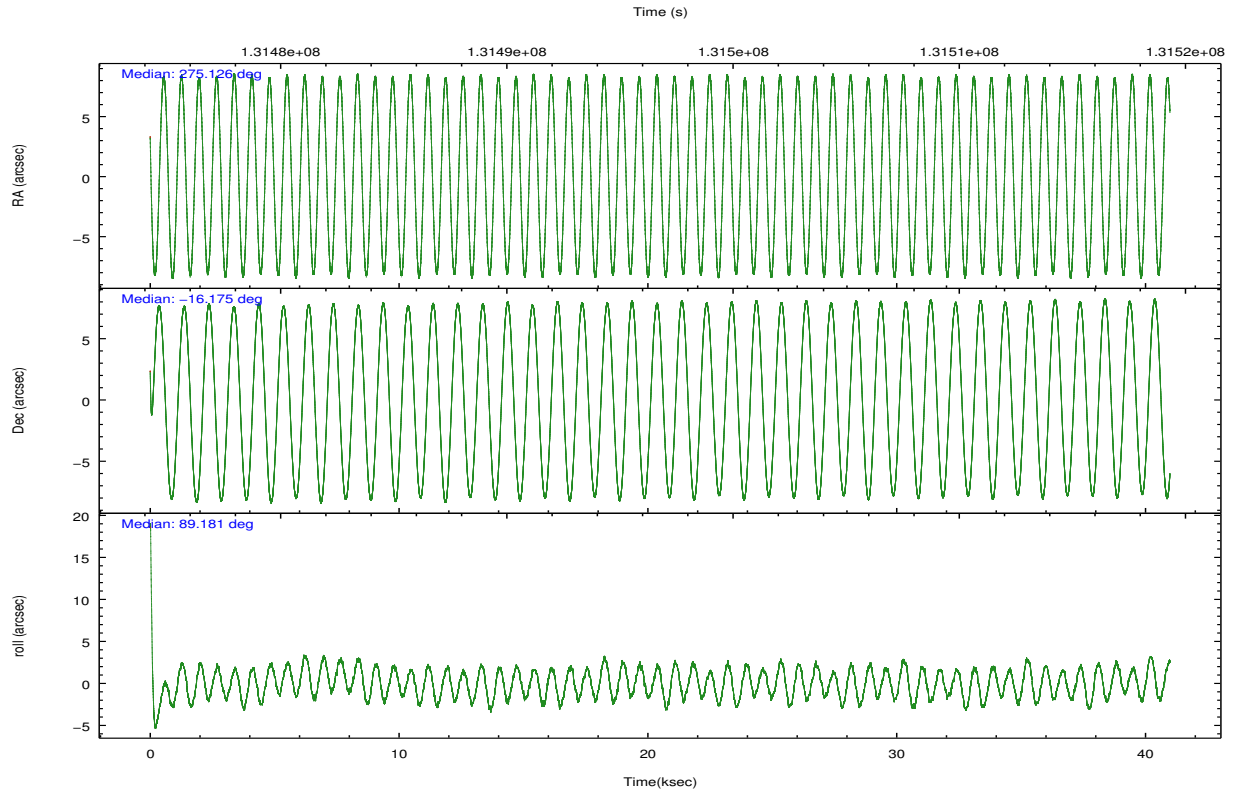
	ccd 0	ccd 1	ccd 2	ccd 3	ccd 6	ccd 7		ccd 0	ccd 1	ccd 2	ccd 3	ccd 6	ccd 7
level 1 events	249925	257286	274687	288315	278931	341052	grade 0 events	20629	24451	24448	35294	16215	14045
rejected events	209908	211459	229842	228652	243009	196631		8%	9%	8%	12%	5%	4%
rejected %	83%	82%	83%	79%	87%	57%	grade 1 events	132	159	183	560	140	290
								0%	0%	0%	0%	0%	0%
							grade 2 events	7473	7954	8156	9761	6938	29002
								2%	3%	2%	3%	2%	8%
							grade 3 events	3360	3591	3322	4008	3243	13020
								1%	1%	1%	1%	1%	3%
							grade 4 events	3047	3609	3266	4004	3128	13259
								1%	1%	1%	1%	1%	3%
							grade 5 events	9811	10549	9269	10975	11554	32953
								3%	4%	3%	3%	4%	9%
							grade 6 events	5510	6228	5663	6601	6401	75120
								2%	2%	2%	2%	2%	22%
							grade 7 events	199963	200745	220380	217112	231312	163363
								80%	78%	80%	75%	82%	47%

## 2.2 Compared Parameters

Parameter	Planned	Actual	Parameter	Planned	Actual
Instrument	ACIS	ACIS	Obspar format version number	7	7
Detector	ACIS-012367	ACIS-012367	Obspar file type	PREDICTED	ACTUAL
Grating	NONE	NONE	Obspar update status	NONE	UPDATED
Data mode	FAINT	FAINT	Number of optional ACIS chips dropped	0	0
Observation mode	POINTING	POINTING	On-chip summing requested	N	N
[deg] Pointing RA	275.140530	275.126553644177	Subarray requested	NONE	NONE
[deg] Pointing Dec	-16.198911	-16.17502122399994	Alternating exposures requested	N	N
[deg] Pointing Roll	88.982067	89.18685877771274	[s] Primary exposure time	0.000000	3.2
[mm] SIM focus pos	-0.782348	-0.7809083437167272			
[mm] SIM defocus	0	0.001439871863259334			
[mm] SIM translation stage pos	-233.592463	-233.5874344608287			
[mm] SIM translation stage offset	0	-0.005018542100998502			
[s] Observation start time (MET)	131477259.184000	131475903.97326			
Observation start date	2002-03-02T17:26:35	2002-03-02T17:05:03			
[s] Observation end time (MET)	131517259.184000	131517892.58746			
Observation end date	2002-03-03T04:33:15	2002-03-03T04:44:52			
Read mode	TIMED	TIMED			

## 2.3 Aspect



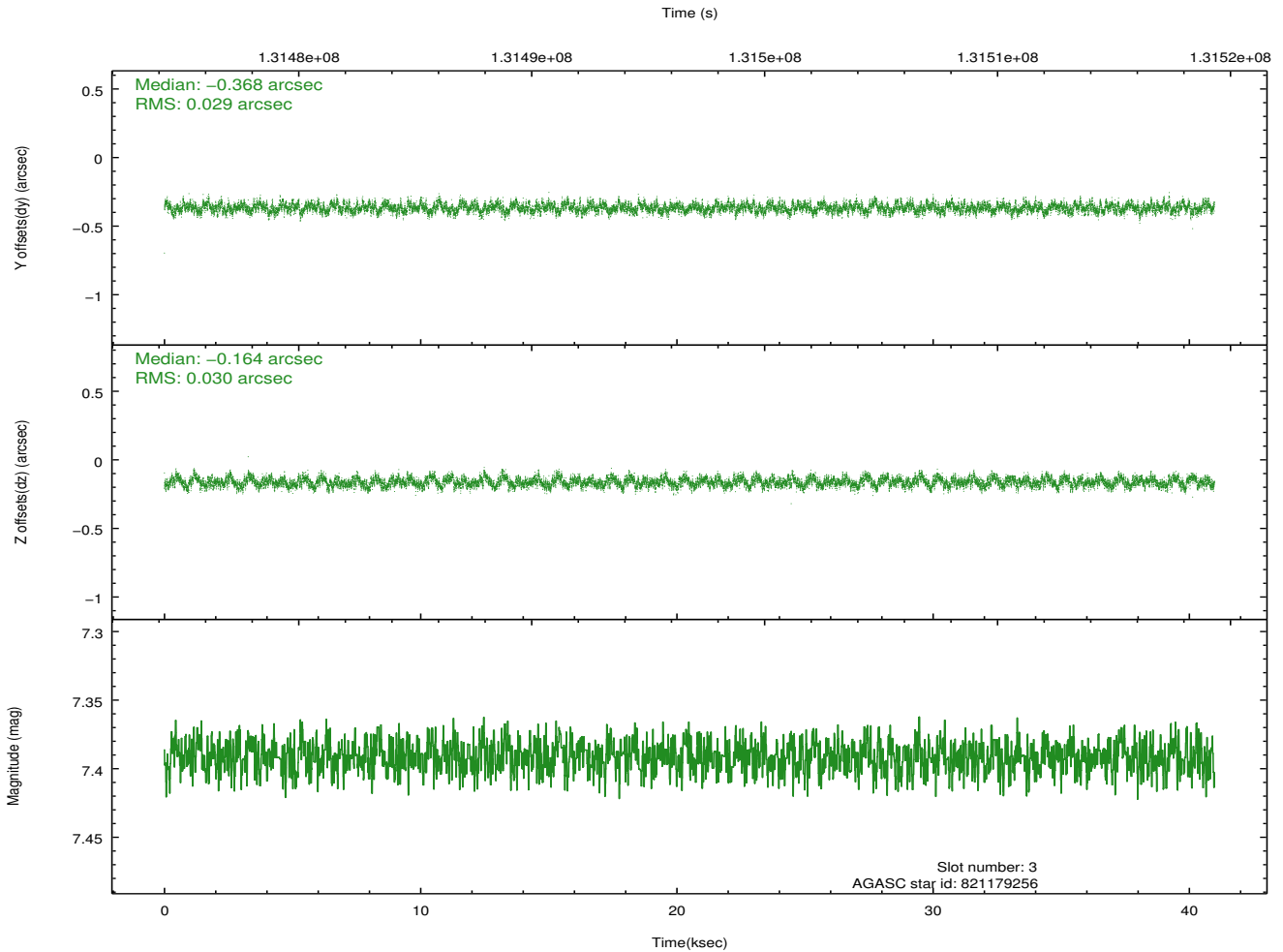
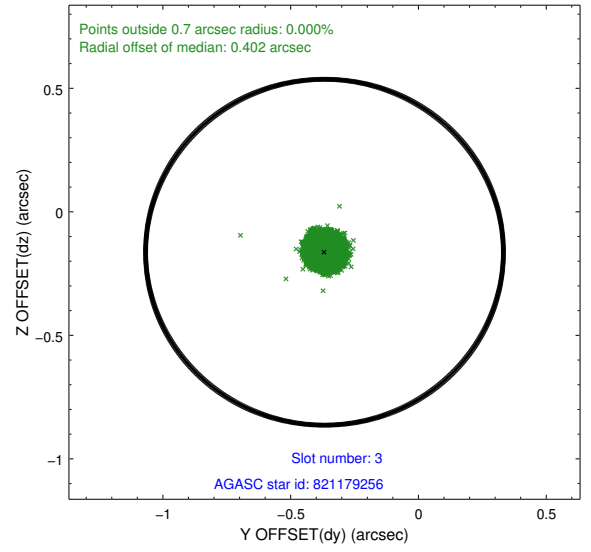
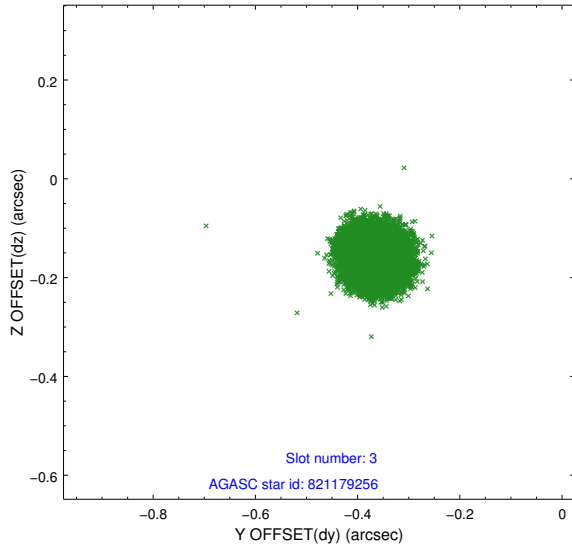


### Slot Statistics

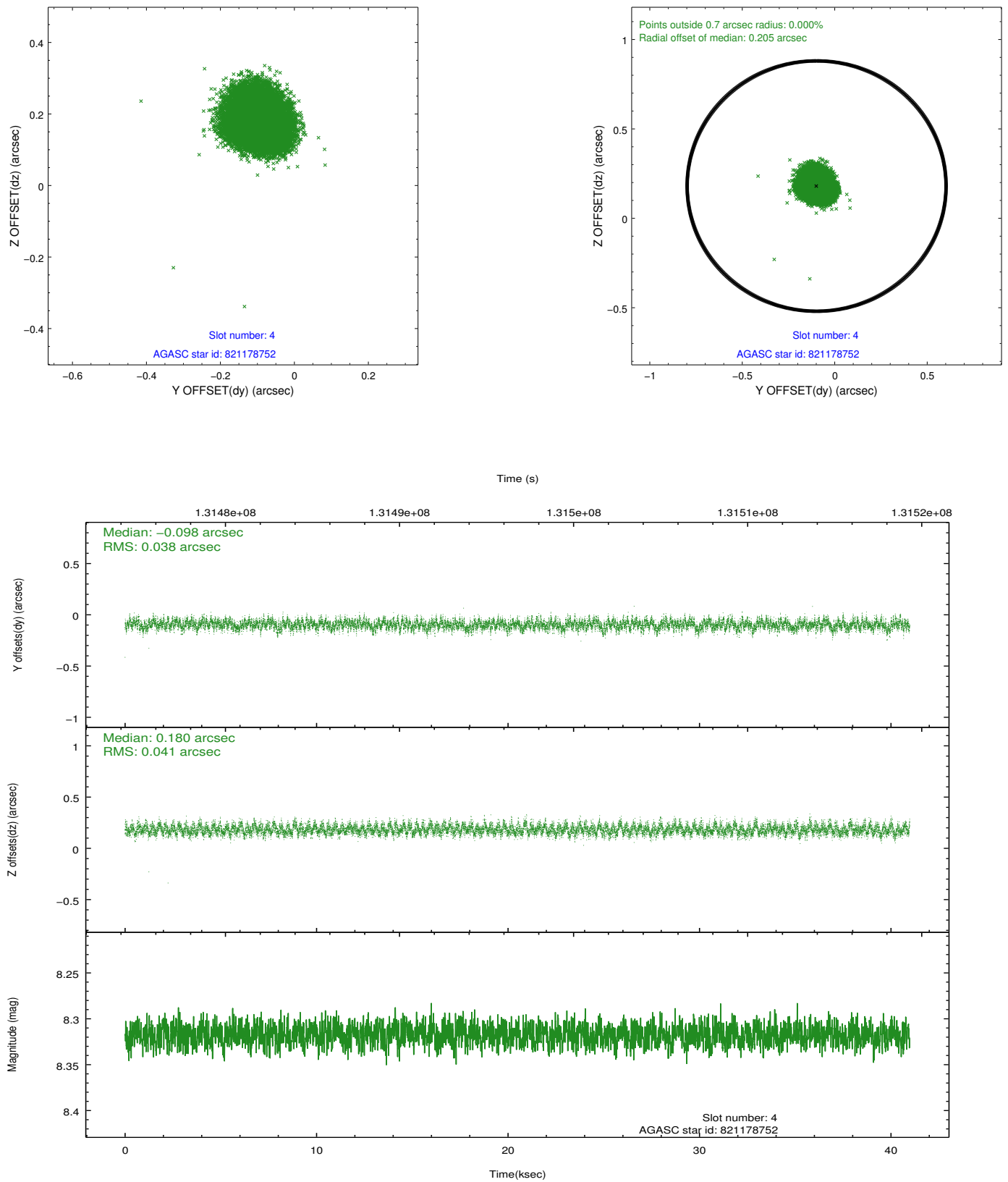
slot	status	id	mag	n_pts	med_dy	med_dz	dr1	dr2	ra	dec	mean_y	mean_z
0	FID	ACIS-I-1	7.24	9996	-0.024	0.056	0.008	0.017	0.000000	0.000000	937.43	-831.14
1	FID	ACIS-I-5	7.24	9993	-0.026	0.041	0.007	0.011	0.000000	0.000000	-1810.64	1066.38
2	FID	ACIS-I-6	7.26	9994	-0.041	-0.026	0.007	0.013	0.000000	0.000000	402.99	1710.79
3	GUIDE	821179256	7.39	19990	-0.368	-0.164	0.045	0.071	274.840900	-15.612800	2090.07	1075.94
4	GUIDE	821178752	8.32	19989	-0.098	0.180	0.060	0.096	275.657809	-16.142816	231.72	-1785.05
5	GUIDE	821181816	8.40	19989	0.307	-0.062	0.057	0.093	274.847938	-16.750455	-2003.62	972.51
6	GUIDE	821186736	7.95	19990	0.251	-0.180	0.043	0.071	274.765126	-16.656680	-1671.84	1264.61
7	GUIDE	821171832	8.89	19981	-0.090	0.222	0.076	0.126	275.792275	-15.610164	2155.98	-2221.75

## 2.4 Star Slots

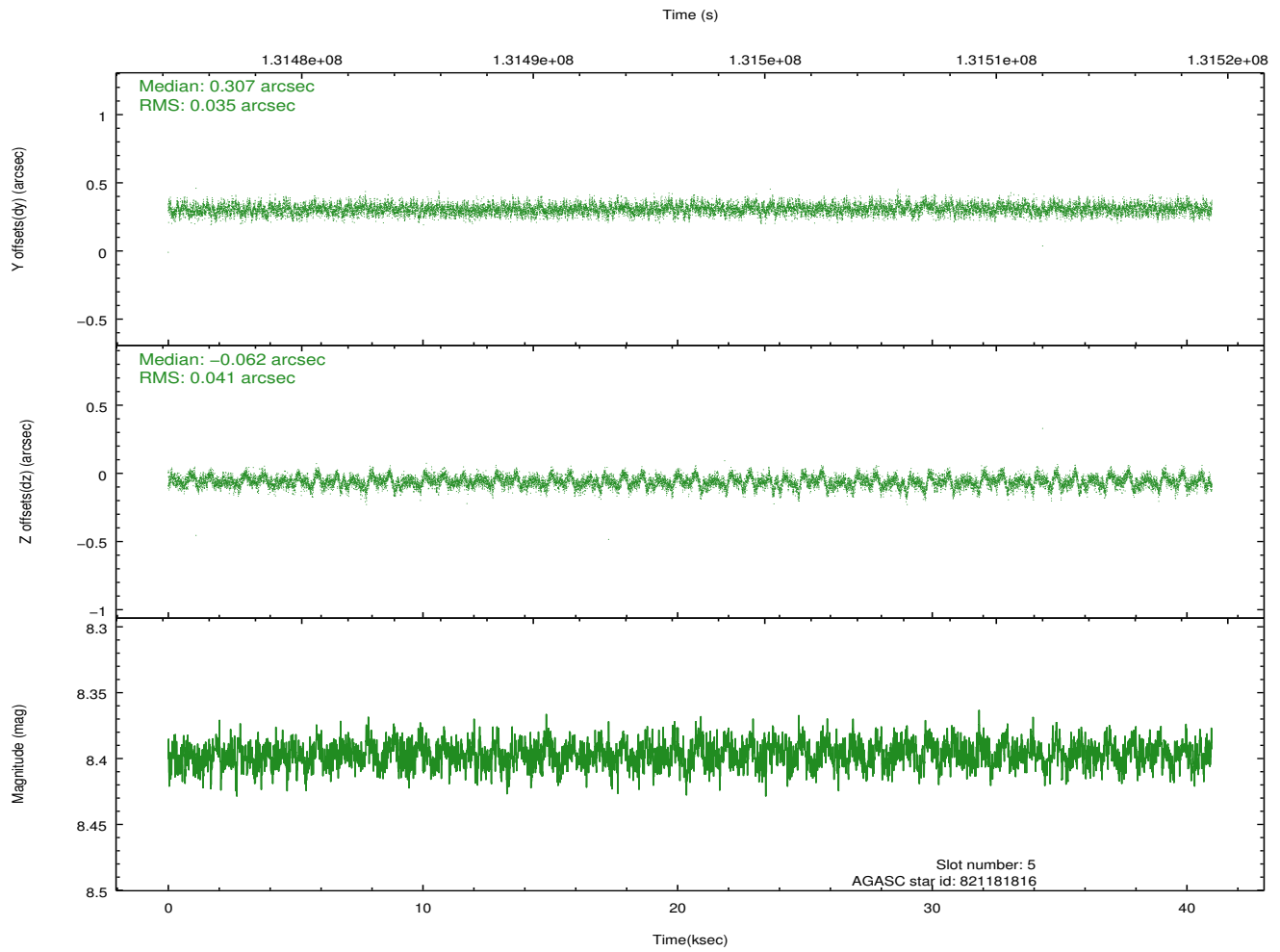
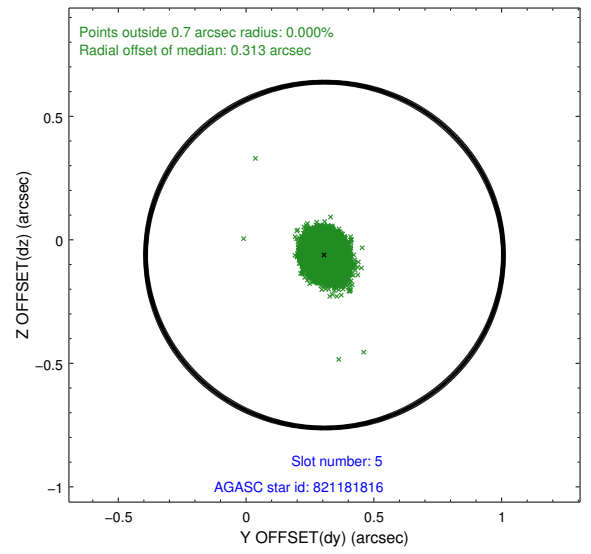
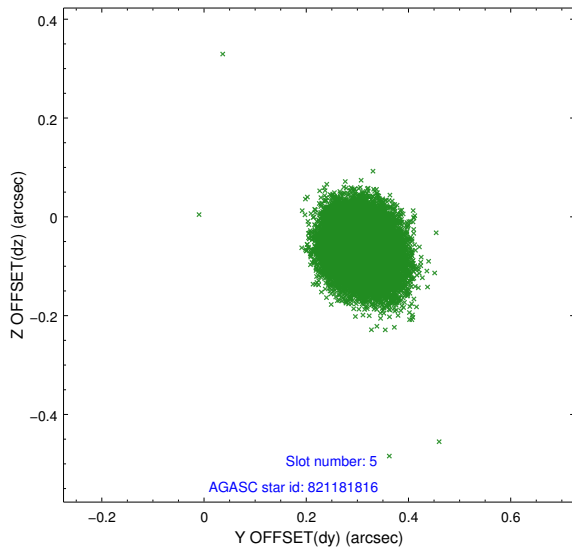
### 2.4.1 Slot 3



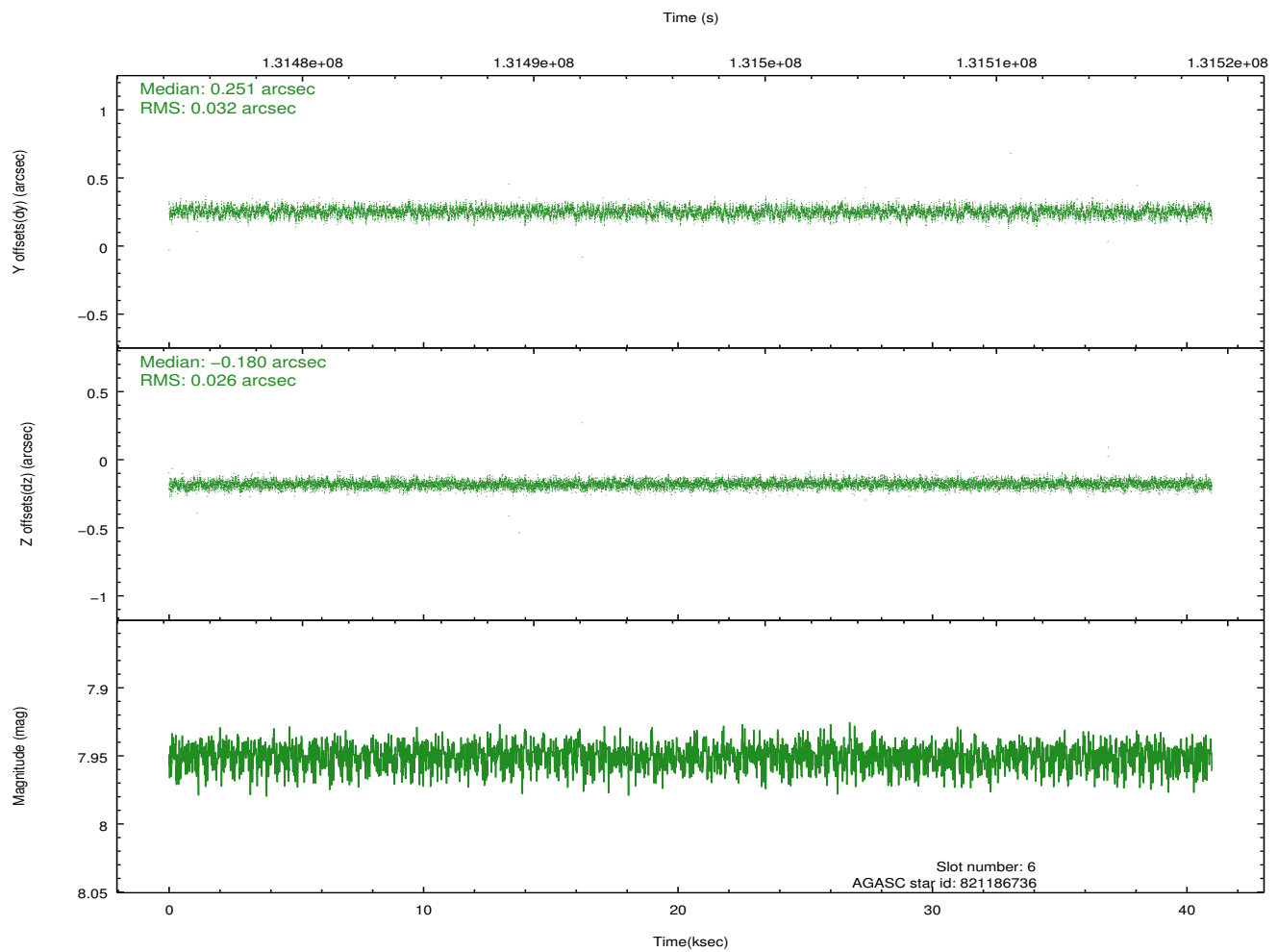
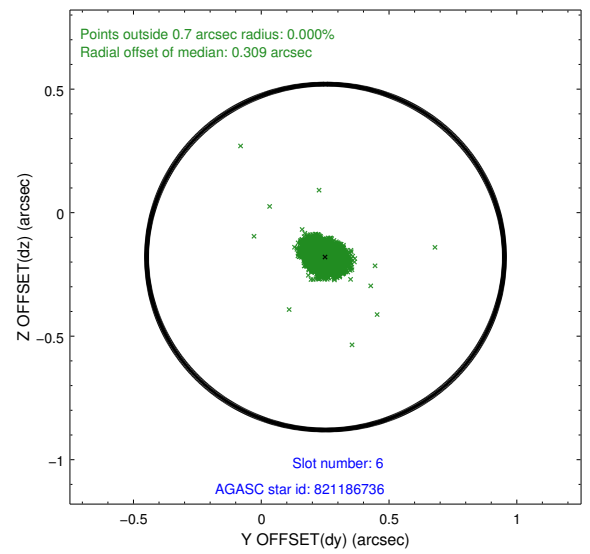
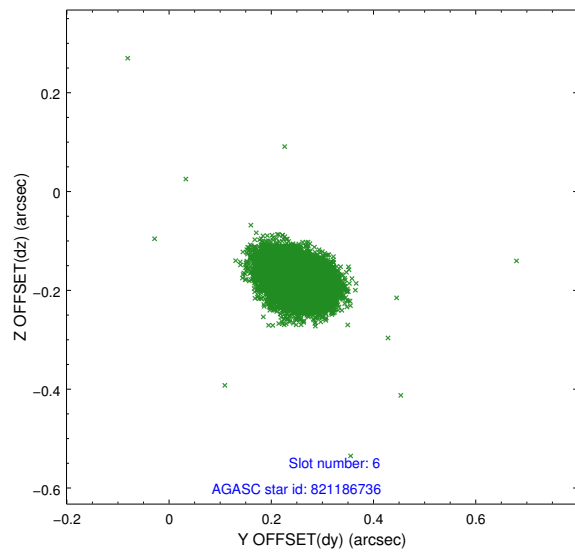
## 2.4.2 Slot 4



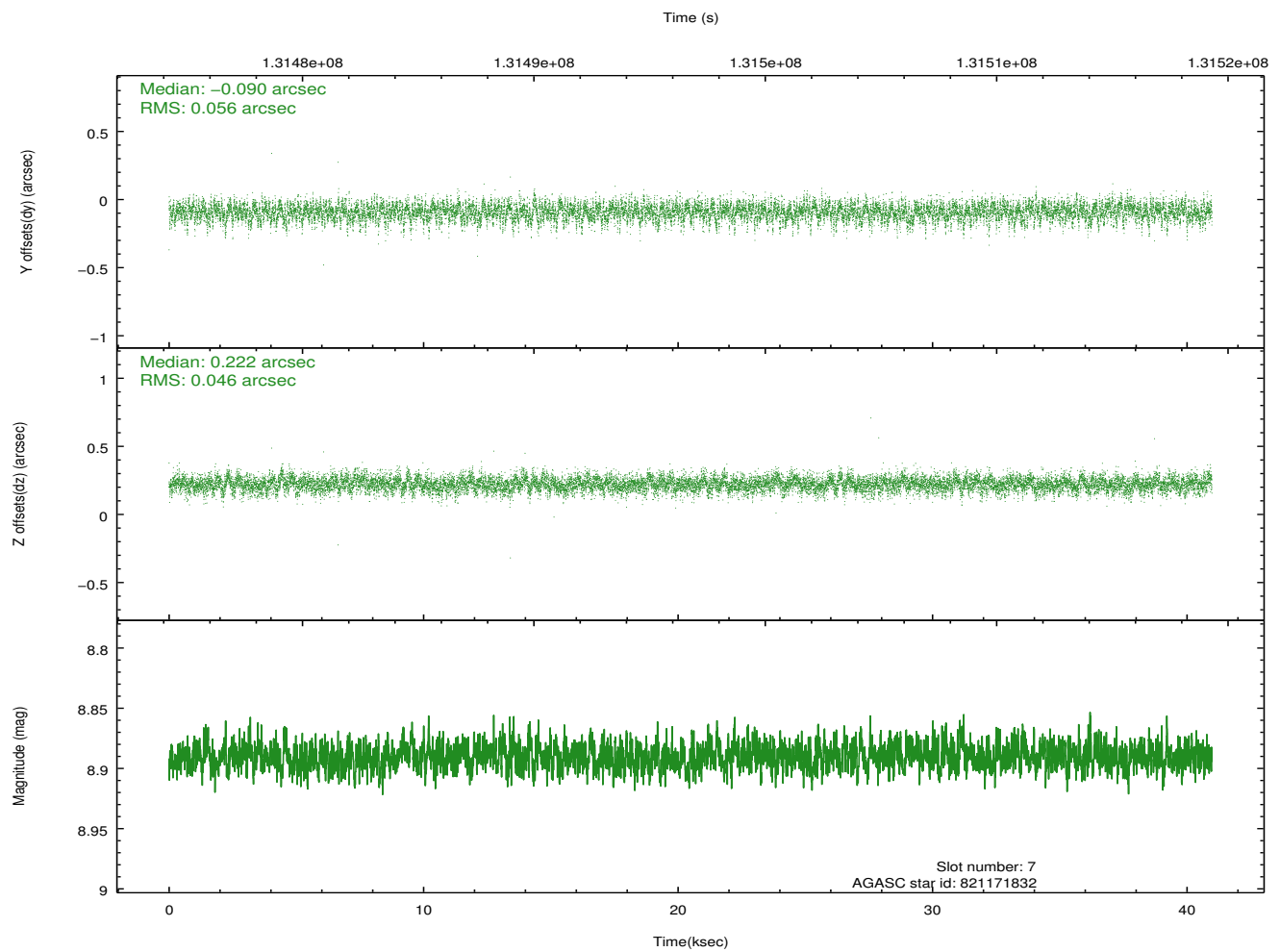
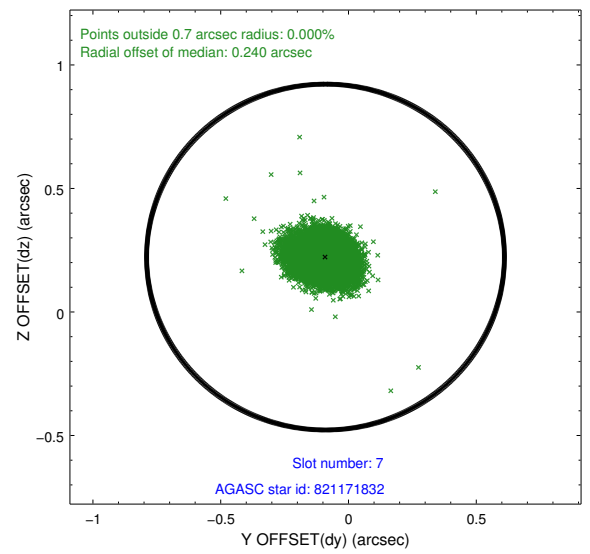
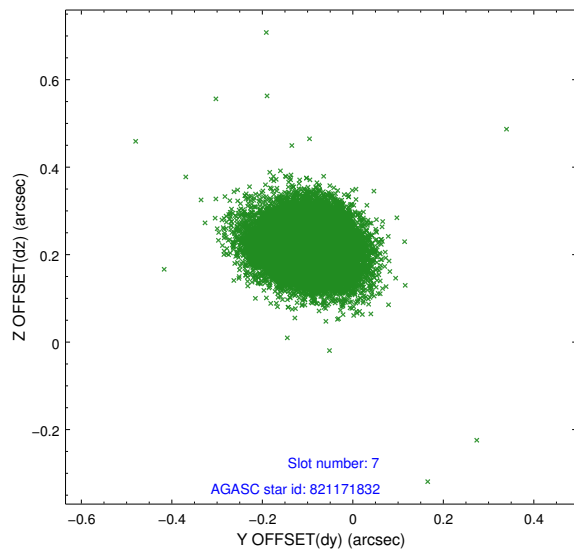
### 2.4.3 Slot 5



## 2.4.4 Slot 6

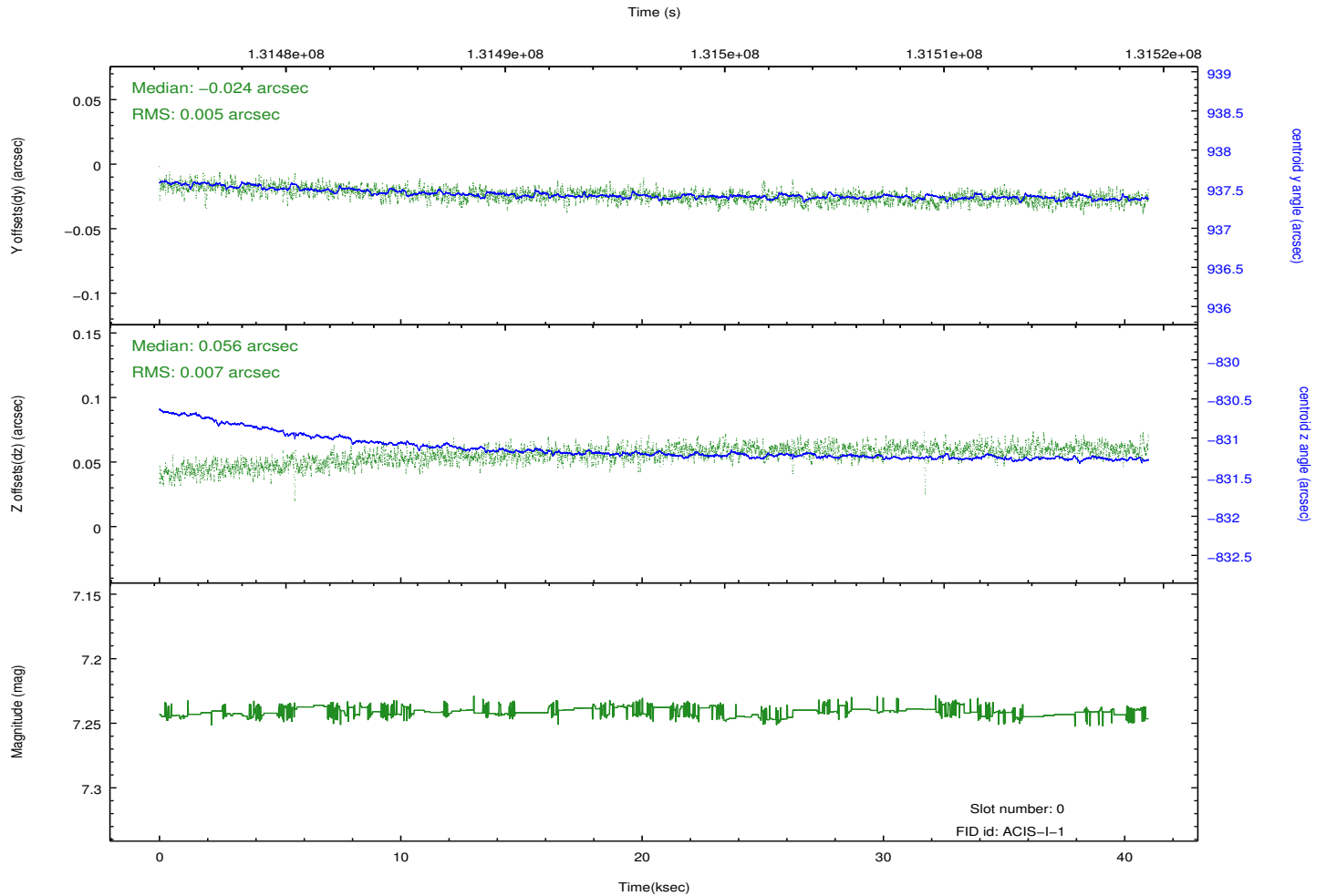
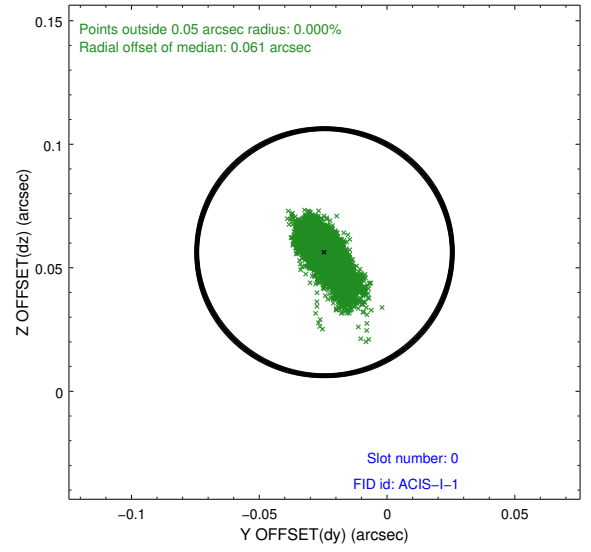
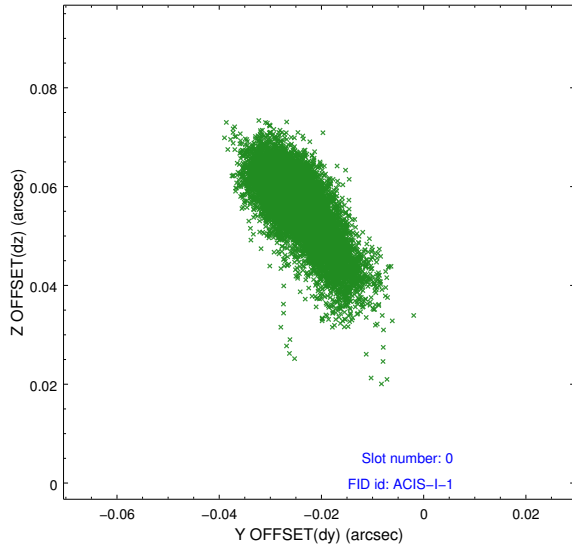


## 2.4.5 Slot 7

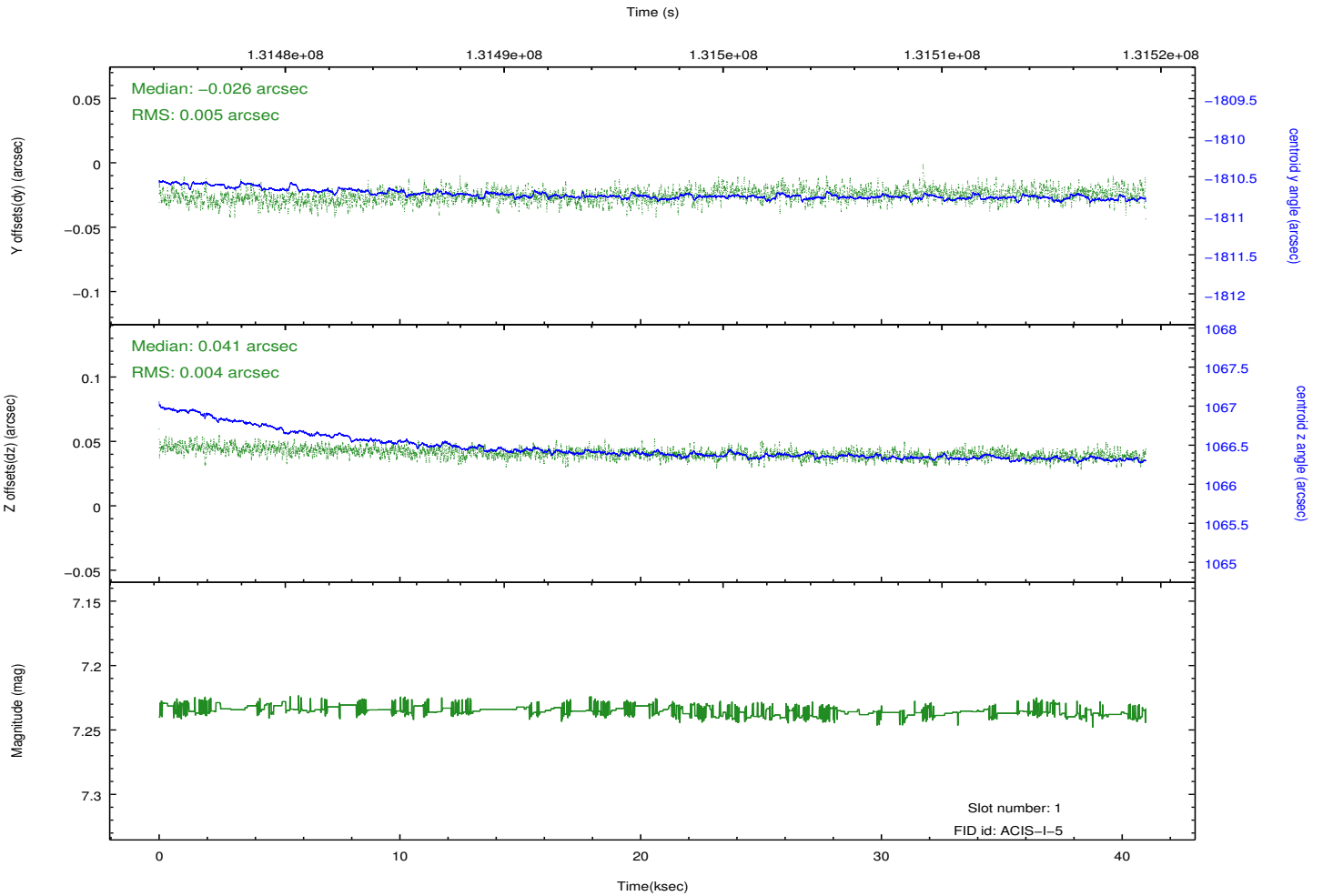
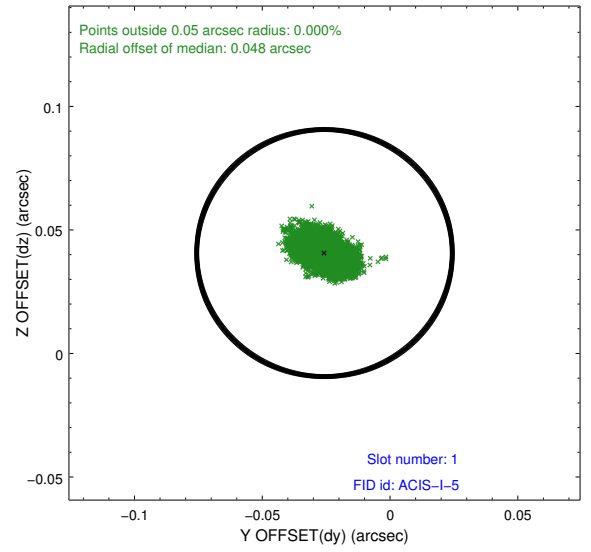
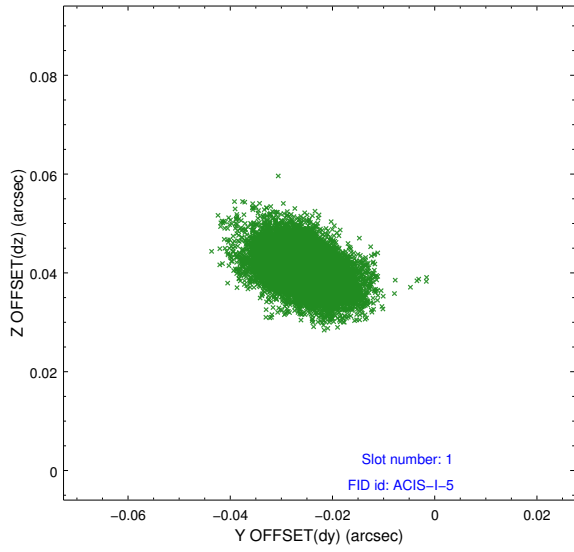


## 2.5 FID Slots

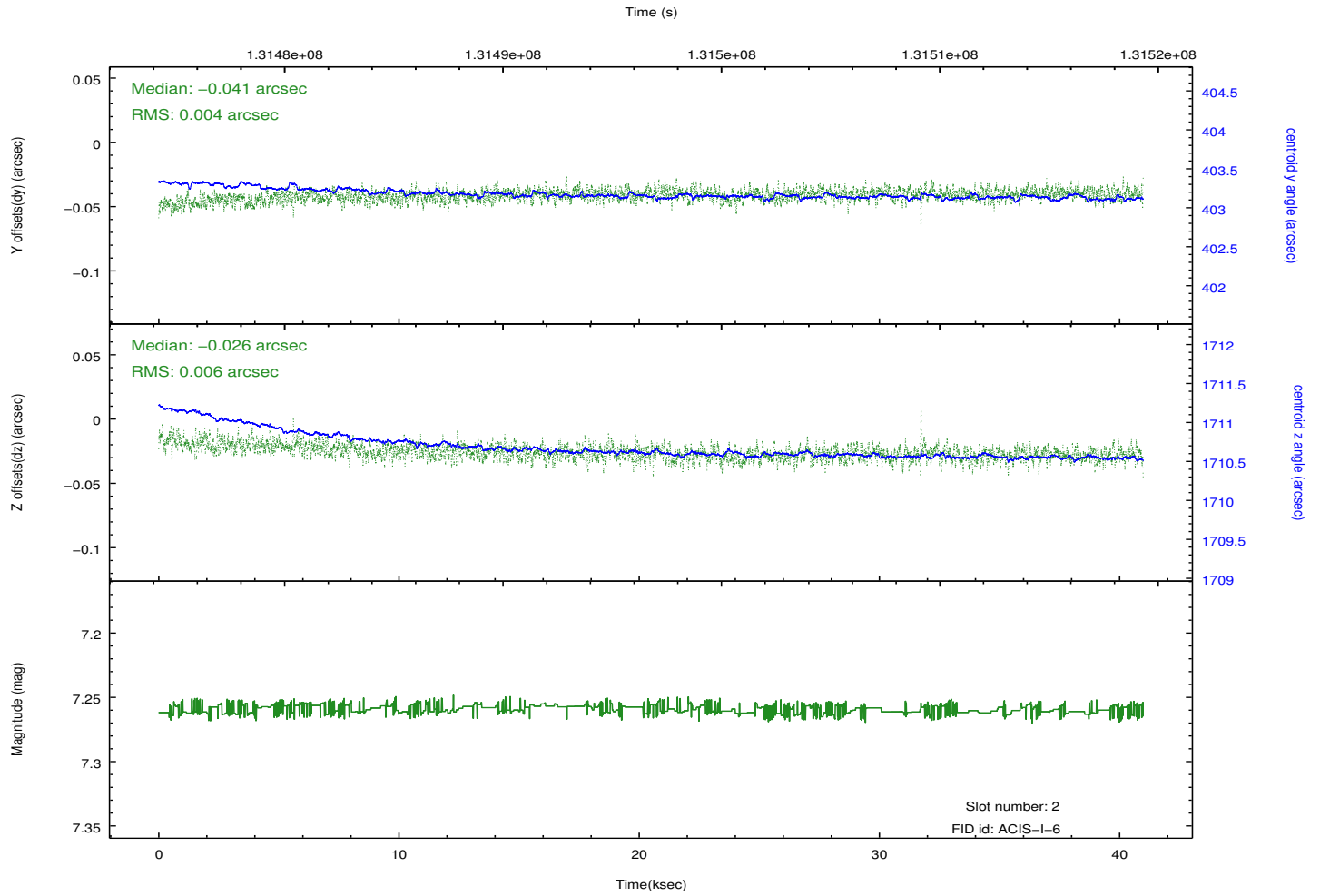
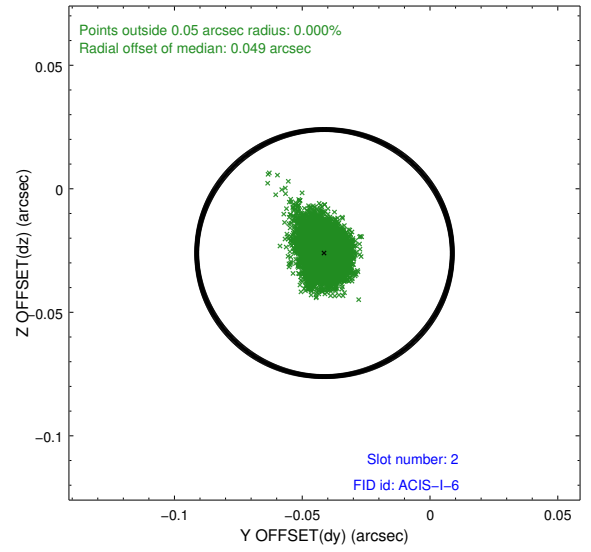
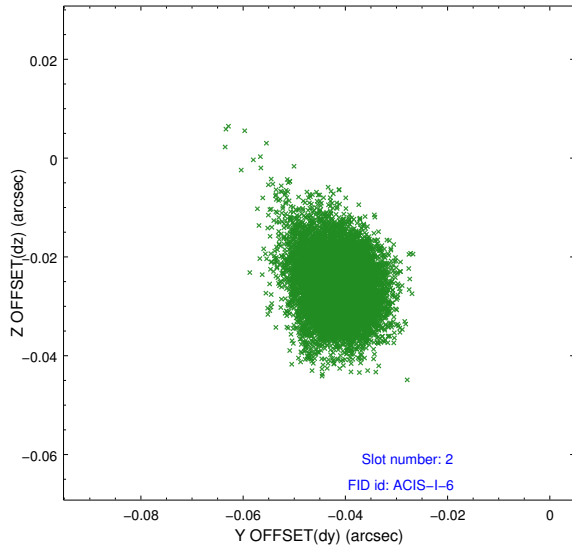
### 2.5.1 Slot 0



## 2.5.2 Slot 1



### 2.5.3 Slot 2



# A Summary

## A.1 Status

V&V Scientist	Jen Lauer
V&V Date (YYYY-MM-DD)	2012.10.04
V&V Edition	1
V&V Disposition and Status	OK
V&V Charge Time	39.945

## A.2 Comments