

V&V Reference Report

L2 ASCDS Version : 8.4.4

Observation 10113 - L2 Version 2
Chandra X-Ray Center

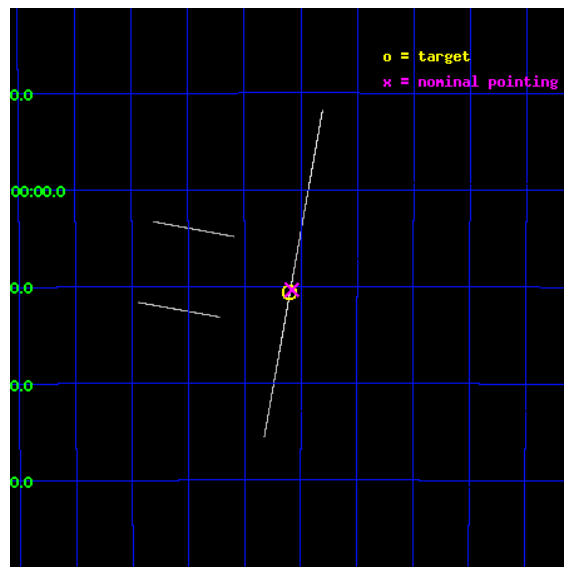
L2 Processing Date : May 30 2012

Contents

1	Front	2
2	OBI	3
2.1	OBI	3
2.1.1	Images	3
2.1.2	Bias	3
2.1.3	Parameters	4
2.1.4	Events	4
2.2	Compared Parameters	5
2.3	Aspect	6
2.4	Star Slots	9
2.4.1	Slot 3	9
2.4.2	Slot 4	10
2.4.3	Slot 5	11
2.4.4	Slot 6	12
2.4.5	Slot 7	13
2.5	FID Slots	14
2.5.1	Slot 0	14
2.5.2	Slot 1	15
2.5.3	Slot 2	16
A	Summary	17
A.1	Status	17
A.2	Comments	17

1 Front

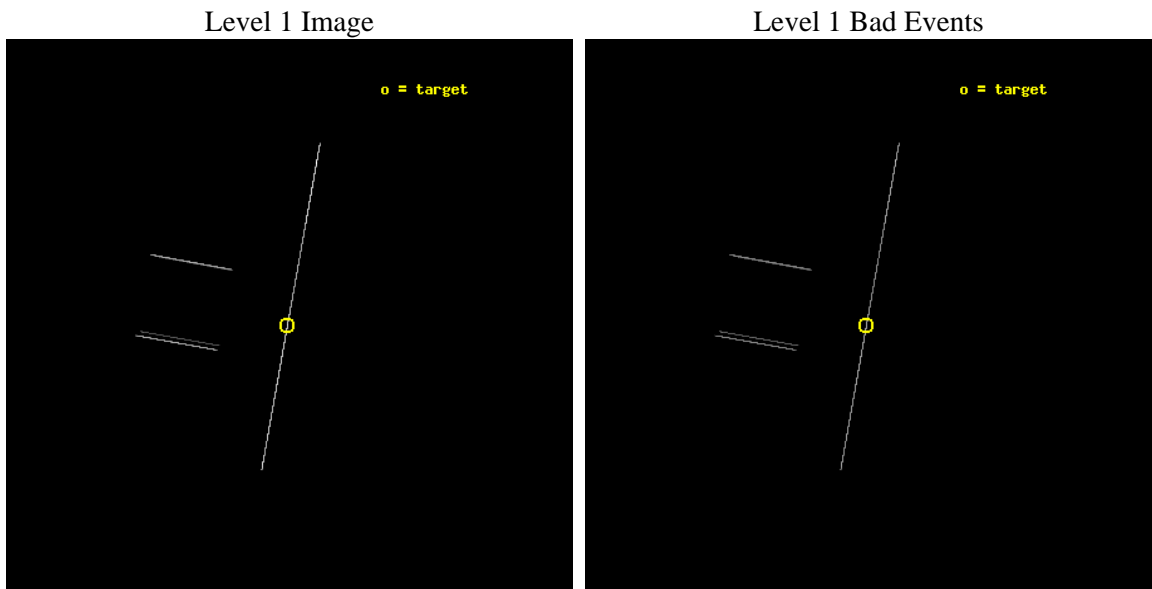
seq_num	501040	Sequence number
obs_id	10113	Observation id
title	New Pulsar Identifications of TeV Gamma-ray Sources	Proposal title
observer	Prof. Jules Halpern	Principal investigator
object	HESS J1713-381	Source name
ra_targ	258.52375	Observer's specified target RA [deg]
dec_targ	-38.176083	Observer's specified target Dec [deg]
ra_nom	258.5196235268	Nominal RA [deg]
dec_nom	-38.172470632036	Nominal Dec [deg]
roll_nom	100.20006610021	Nominal Roll [deg]
revision	2	Processing version of data
ontime	30146.5	Sum of GTIs [s]
livetime	30028.740234375	Livetime [s]
ontime2	30146.5	Sum of GTIs [s]
ontime3	30146.5	Sum of GTIs [s]
ontime5	30146.5	Sum of GTIs [s]
ontime6	30146.5	Sum of GTIs [s]
ontime7	30146.5	Sum of GTIs [s]
ontime8	30146.5	Sum of GTIs [s]
l2events	580680	Number of level 2 events



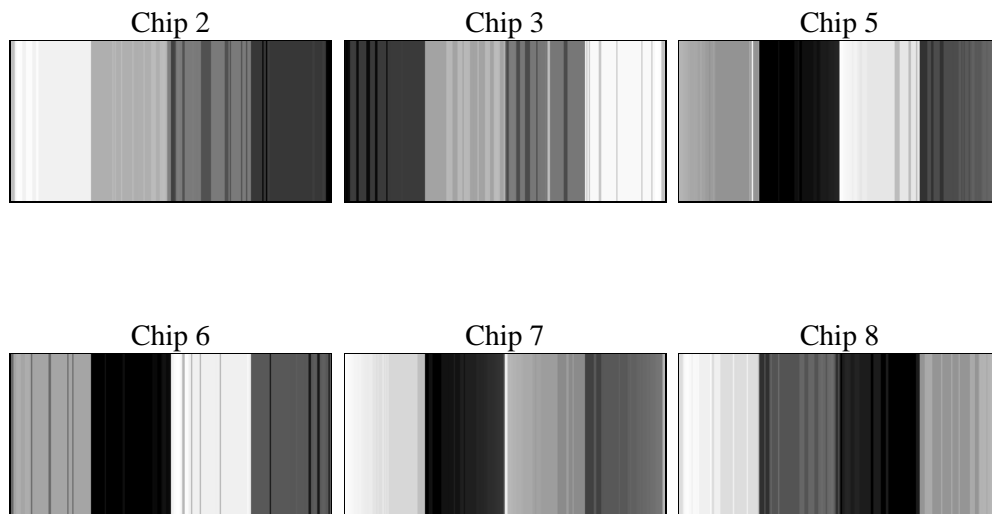
2 OBI

2.1 OBI

2.1.1 Images



2.1.2 Bias



2.1.3 Parameters

obi_num	1	Obi number	sched_exp_time	30000.000000	[s] Scheduled observation exposure time
ascdsver	8.4.4	Processing system revision	ontime	30146.5	Sum of GTIs [s]
caldbver	4.4.9	 	ontime2	30146.5	Sum of GTIs [s]
date	2012-05-30T06:32:22	Date and time of file creation	ontime3	30146.5	Sum of GTIs [s]
revision	2	Processing version of data	ontime5	30146.5	Sum of GTIs [s]
			ontime6	30146.5	Sum of GTIs [s]
			ontime7	30146.5	Sum of GTIs [s]
			ontime8	30146.5	Sum of GTIs [s]
			l1events	892752	Number of level 1 events

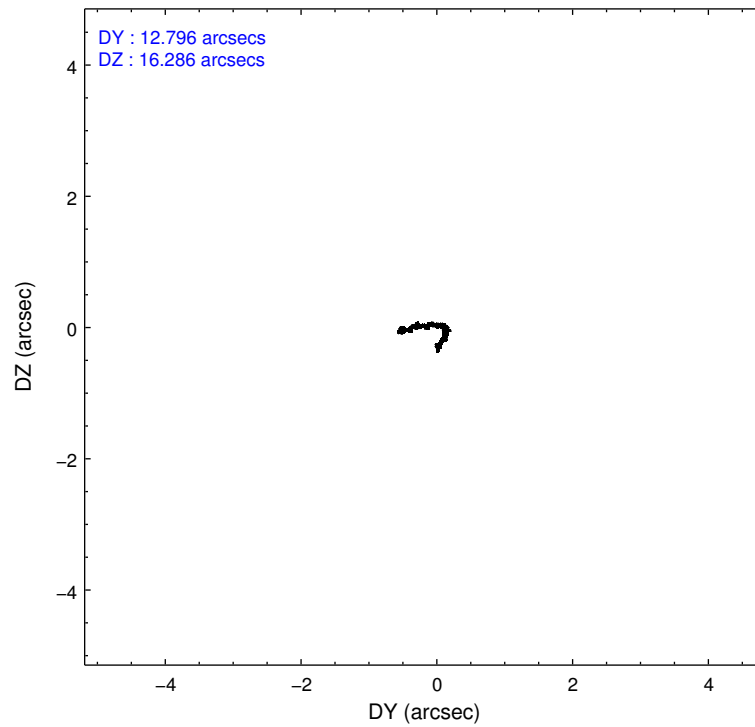
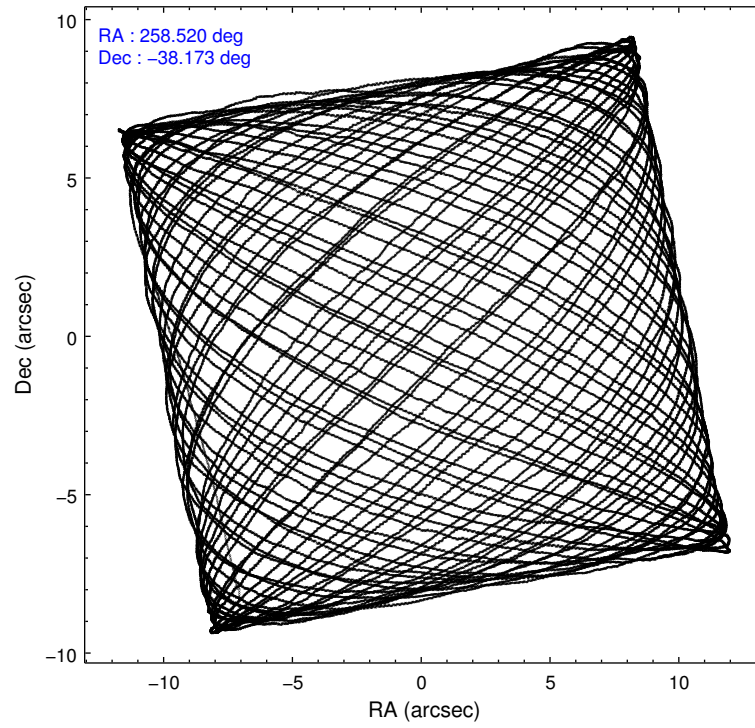
2.1.4 Events

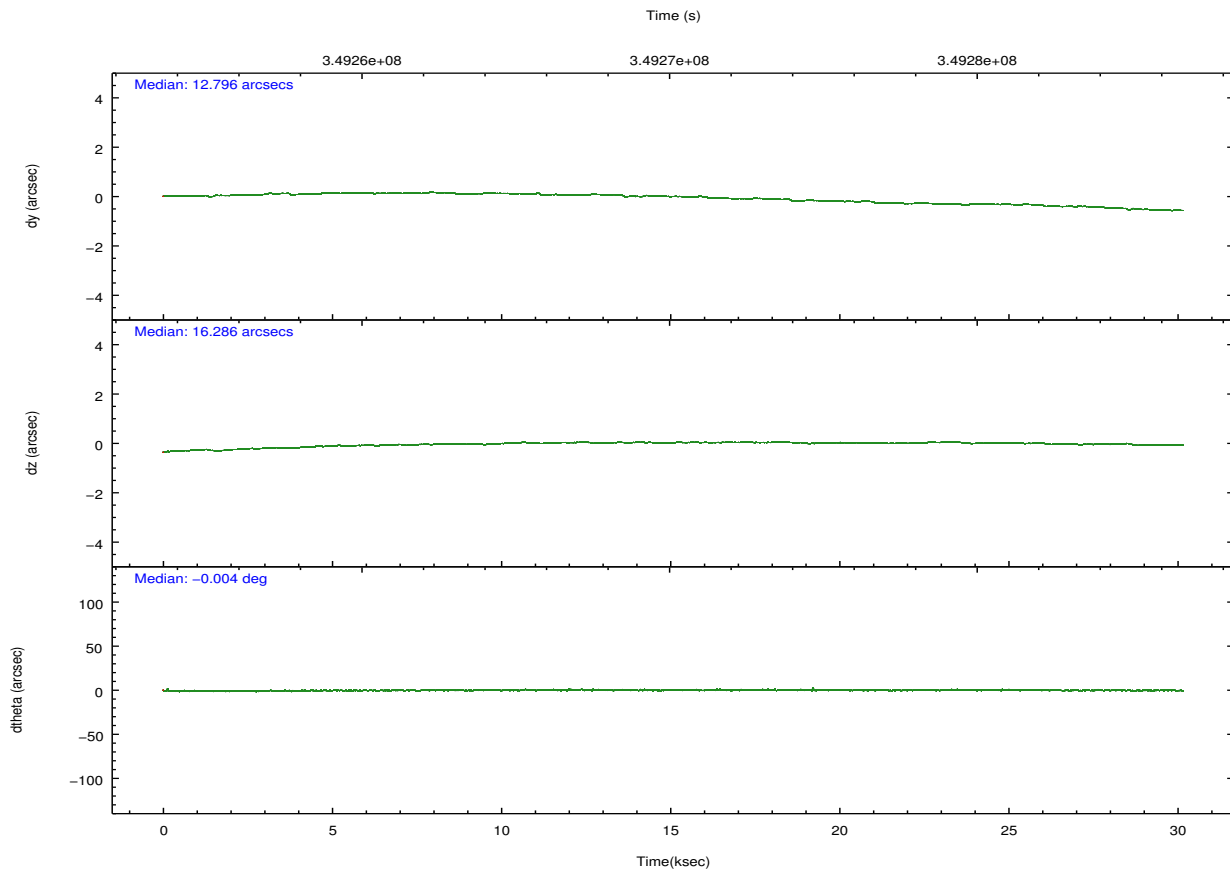
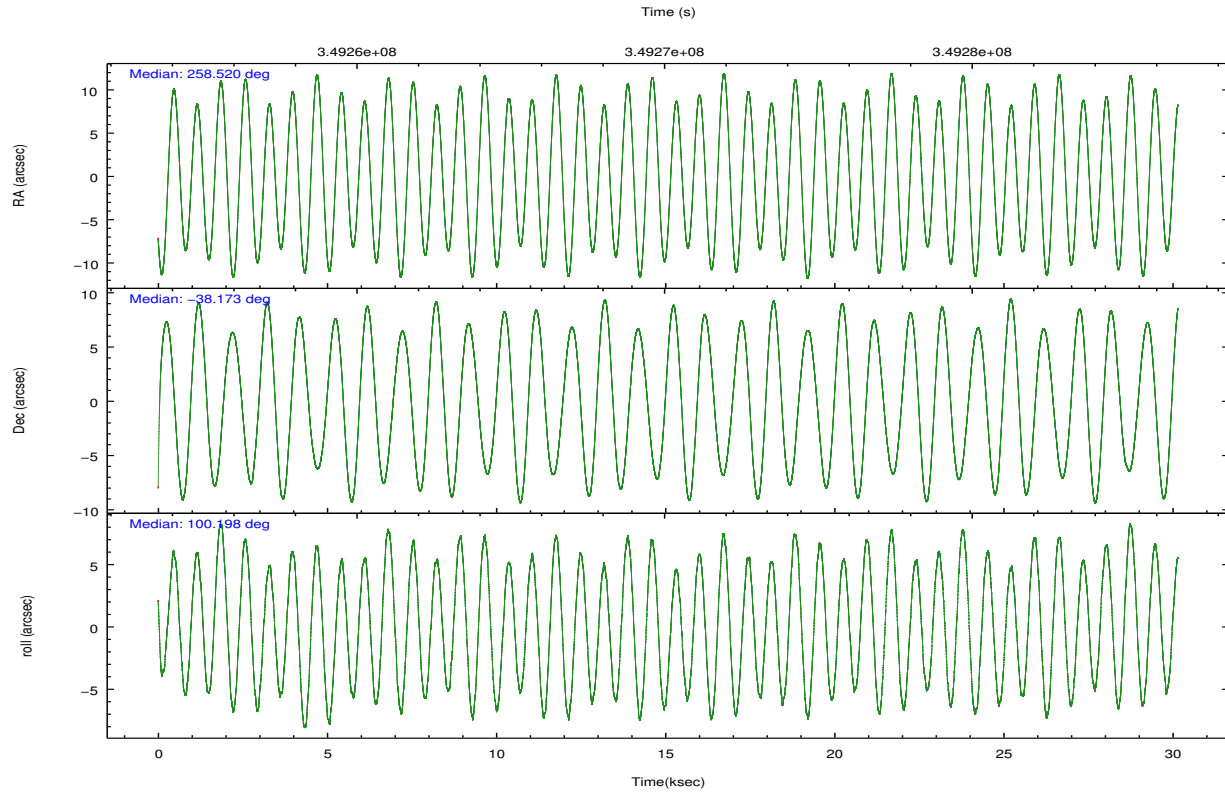
	ccd 2	ccd 3	ccd 5	ccd 6	ccd 7	ccd 8		ccd 2	ccd 3	ccd 5	ccd 6	ccd 7	ccd 8
level 1 events	66788	73165	305796	73664	216611	156728	grade 0 events	8176	8387	46355	7391	13920	28716
rejected events	14839	16472	42100	17192	41373	26761		12%	11%	15%	10%	6%	18%
rejected %	22%	22%	13%	23%	19%	17%	grade 1 events	337	300	513	271	489	553
								0%	0%	0%	0%	0%	0%
							grade 2 events	21431	23733	82402	23005	48126	42905
								32%	32%	26%	31%	22%	27%
							grade 3 events	6505	7397	5875	6997	10621	14757
								9%	10%	1%	9%	4%	9%
							grade 4 events	6504	6524	5541	6849	10579	14091
								9%	8%	1%	9%	4%	8%
							grade 5 events	12501	13800	29674	14603	33771	20591
								18%	18%	9%	19%	15%	13%
							grade 6 events	11334	13024	135436	14548	99105	35115
								16%	17%	44%	19%	45%	22%
							grade 7 events	0	0	0	0	0	0
								0%	0%	0%	0%	0%	0%

2.2 Compared Parameters

Parameter	Planned	Actual	Parameter	Planned	Actual
Instrument	ACIS	ACIS	Obspar format version number	7	7
Detector	ACIS-235678	ACIS-235678	Obspar file type	PREDICTED	ACTUAL
Grating	NONE	NONE	Obspar update status	NONE	UPDATED
Data mode	CC33_FAINT	CC33_FAINT	CCD I0 on	N	N
Observation mode	POINTING	POINTING	CCD I1 on	N	N
[deg] Pointing RA	258.542448	258.5196235267961	CCD I2 on	O2	Y
[deg] Pointing Dec	-38.193107	-38.17247063203569	CCD I3 on	O1	Y
[deg] Pointing Roll	100.057544	100.2000661002098	CCD S0 on	N	N
[mm] SIM focus pos	-0.684267	-0.6828225247311905	CCD S1 on	Y	Y
[mm] SIM defocus	0	0.001444936568705701	CCD S2 on	Y	Y
[mm] SIM translation stage pos	-190.132523	-190.1425803651734	CCD S3 on	Y	Y
[mm] SIM translation stage offset	0	0.01005778216563158	CCD S4 on	Y	Y
[s] Observation start time (MET)	349255185.184000	349253773.26399	CCD S5 on	N	N
Observation start date	2009-01-25T07:18:39	2009-01-25T06:56:13	Number of optional ACIS chips dropped	0	0
[s] Observation end time (MET)	349285185.184000	349285663.06557	On-chip summing requested	N	N
Observation end date	2009-01-25T15:38:39	2009-01-25T15:47:43	Subarray requested	NONE	NONE
Read mode	CONTINUOUS	CONTINUOUS	Alternating exposures requested	N	N
			[s] Primary exposure time	0.000000	0

2.3 Aspect



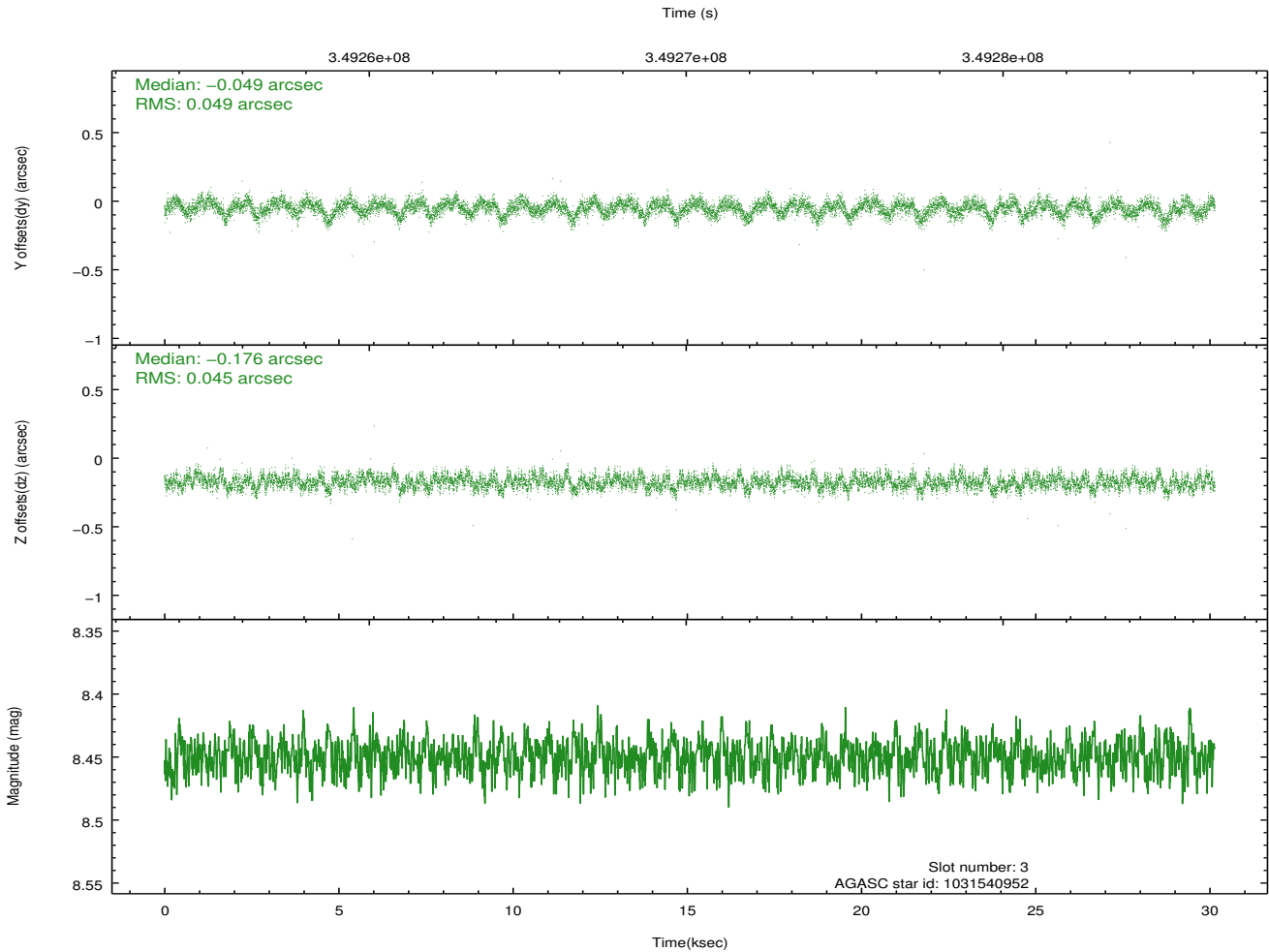
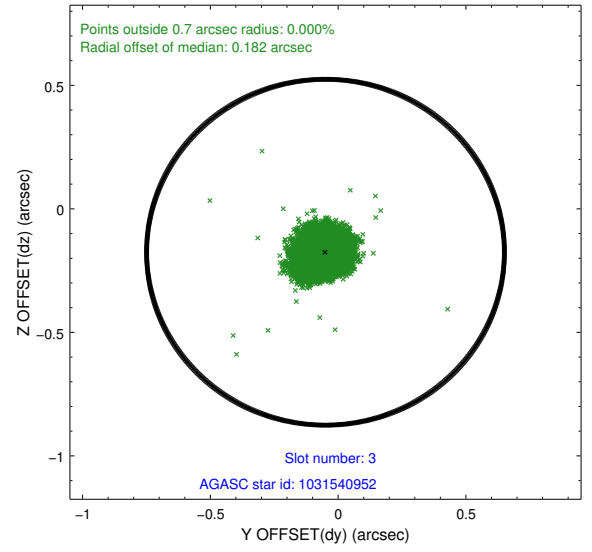
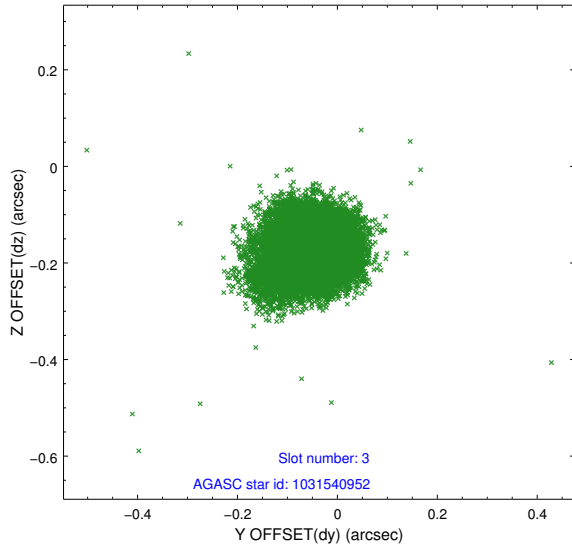


Slot Statistics

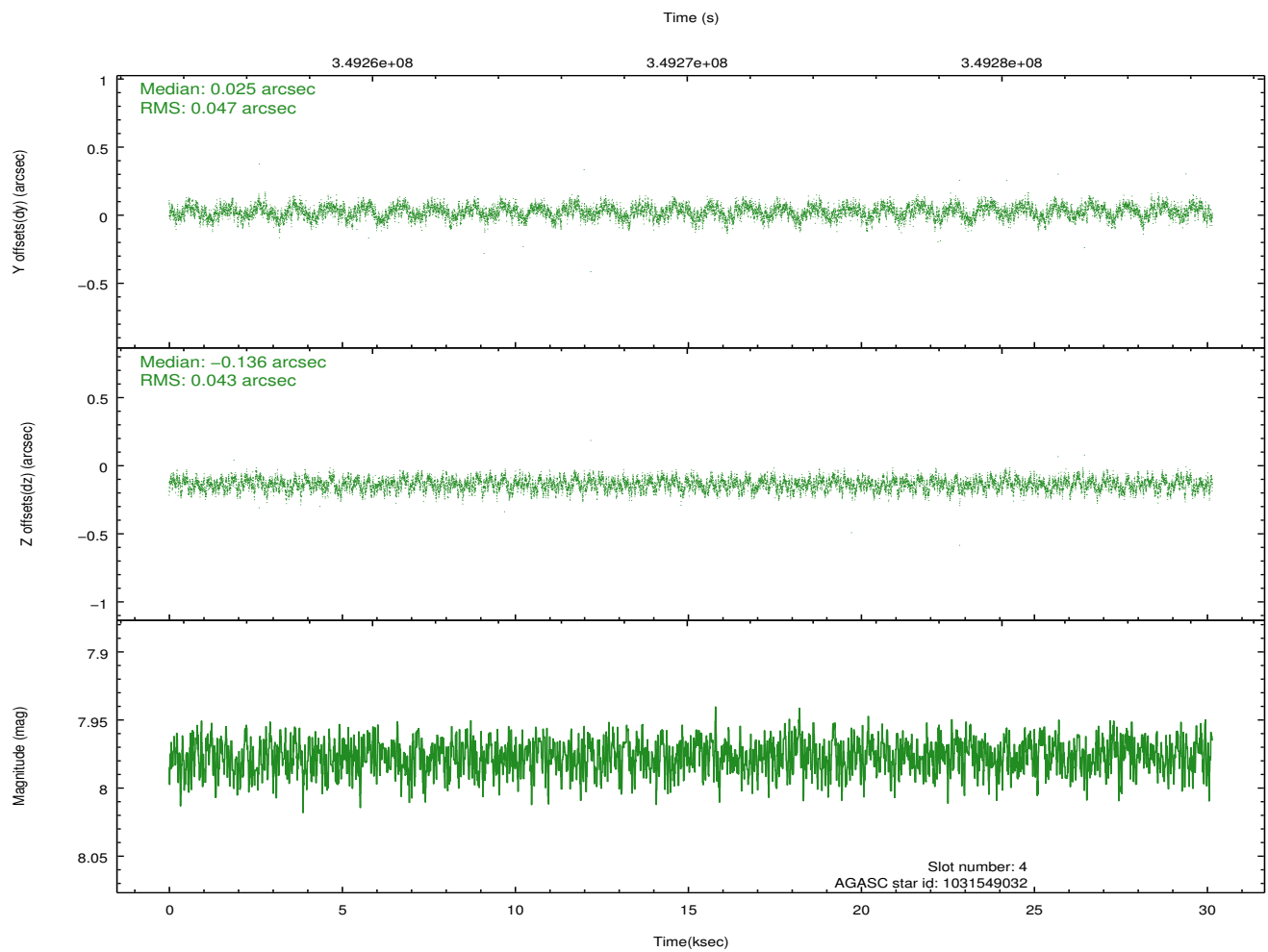
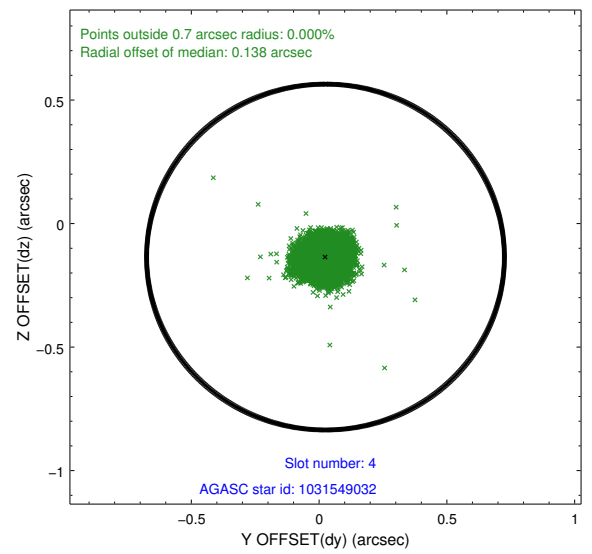
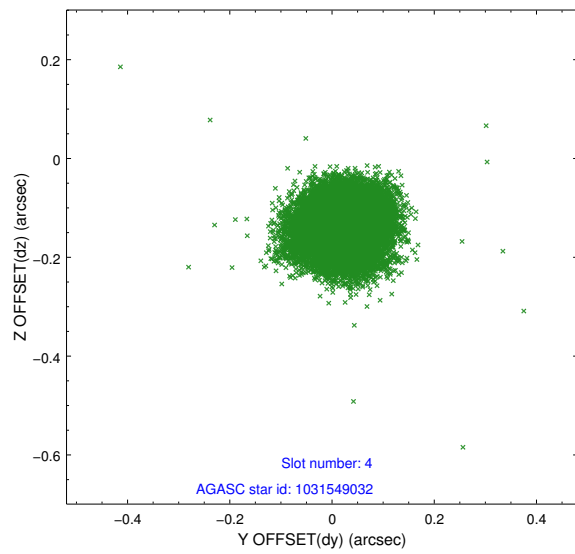
slot	status	id	mag	n_pts	med_dy	med_dz	dr1	dr2	ra	dec	mean_y	mean_z
0	FID	ACIS-S-2	6.91	7355	-0.026	-0.007	0.007	0.012	0.000000	0.000000	-765.63	-1737.62
1	FID	ACIS-S-4	7.00	7355	0.120	0.014	0.012	0.020	0.000000	0.000000	2147.75	170.82
2	FID	ACIS-S-5	7.03	7354	-0.126	0.001	0.011	0.020	0.000000	0.000000	-1818.49	164.54
3	GUIDE	1031540952	8.45	14695	-0.049	-0.176	0.069	0.114	258.248329	-37.810269	1501.95	583.18
4	GUIDE	1031549032	7.98	14707	0.025	-0.136	0.068	0.106	258.584727	-38.516573	-1167.09	86.05
5	GUIDE	1031549480	7.87	14708	0.121	0.097	0.057	0.090	258.859583	-38.394348	-870.85	-754.11
6	GUIDE	1031538744	7.06	14709	-0.235	-0.156	0.059	0.090	257.905000	-37.853256	1514.74	1571.56
7	GUIDE	1031541992	8.54	14699	0.144	0.372	0.063	0.102	259.348449	-38.357588	-989.66	-2134.66

2.4 Star Slots

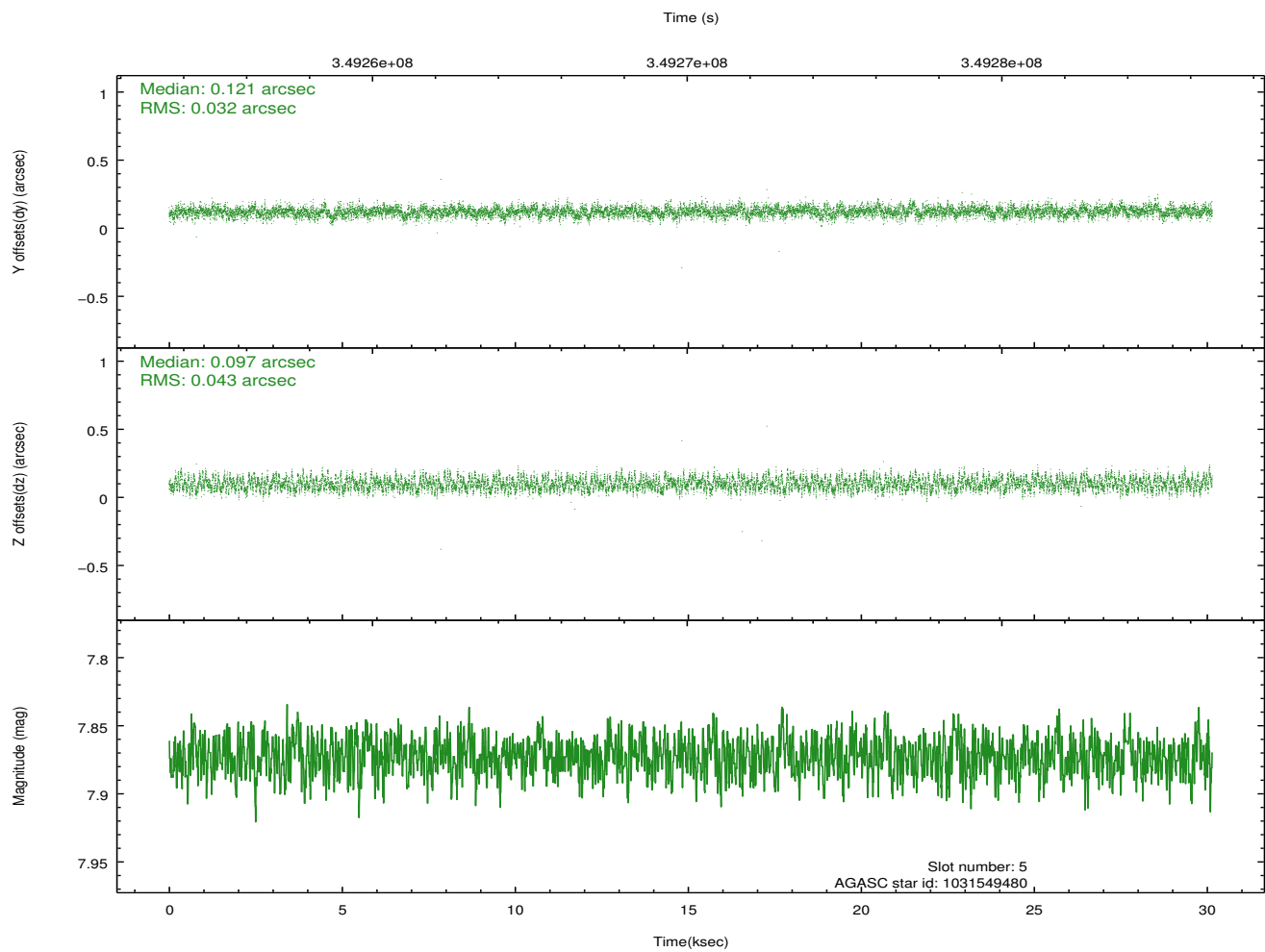
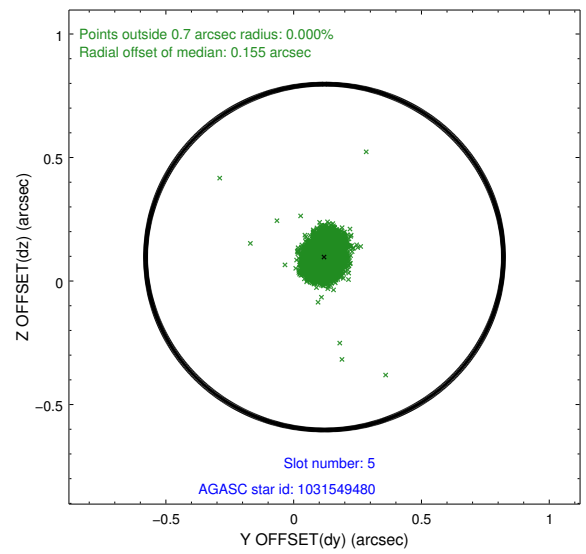
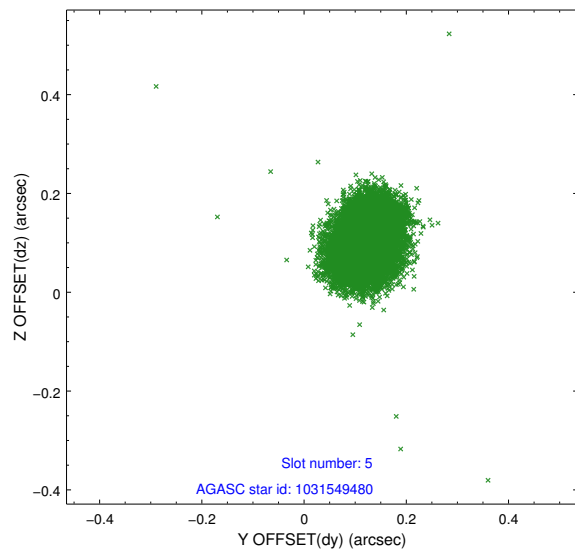
2.4.1 Slot 3



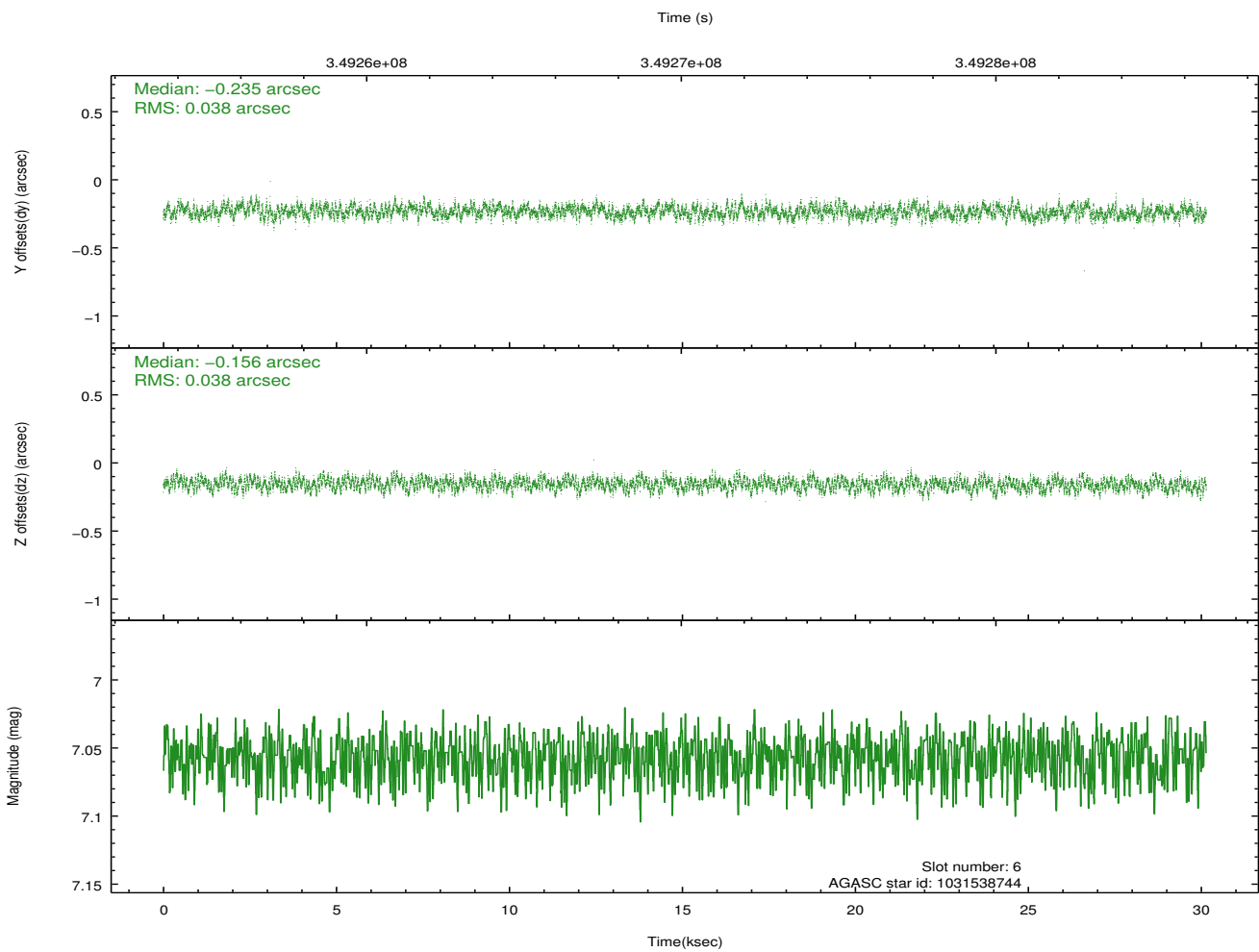
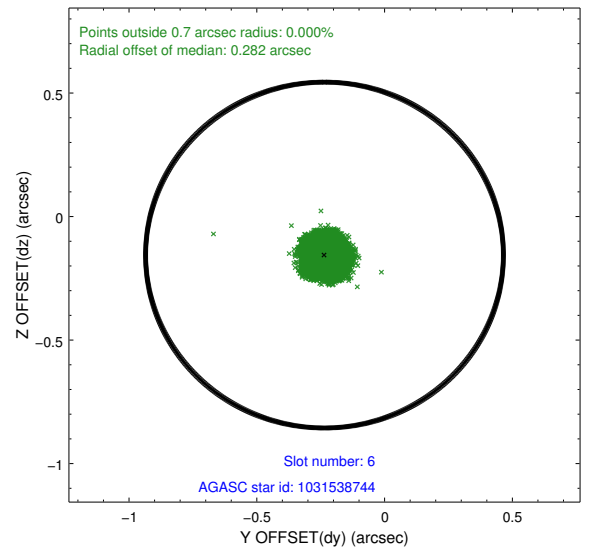
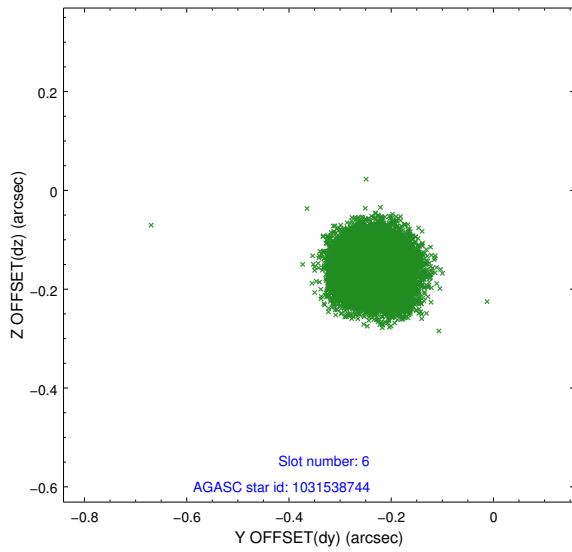
2.4.2 Slot 4



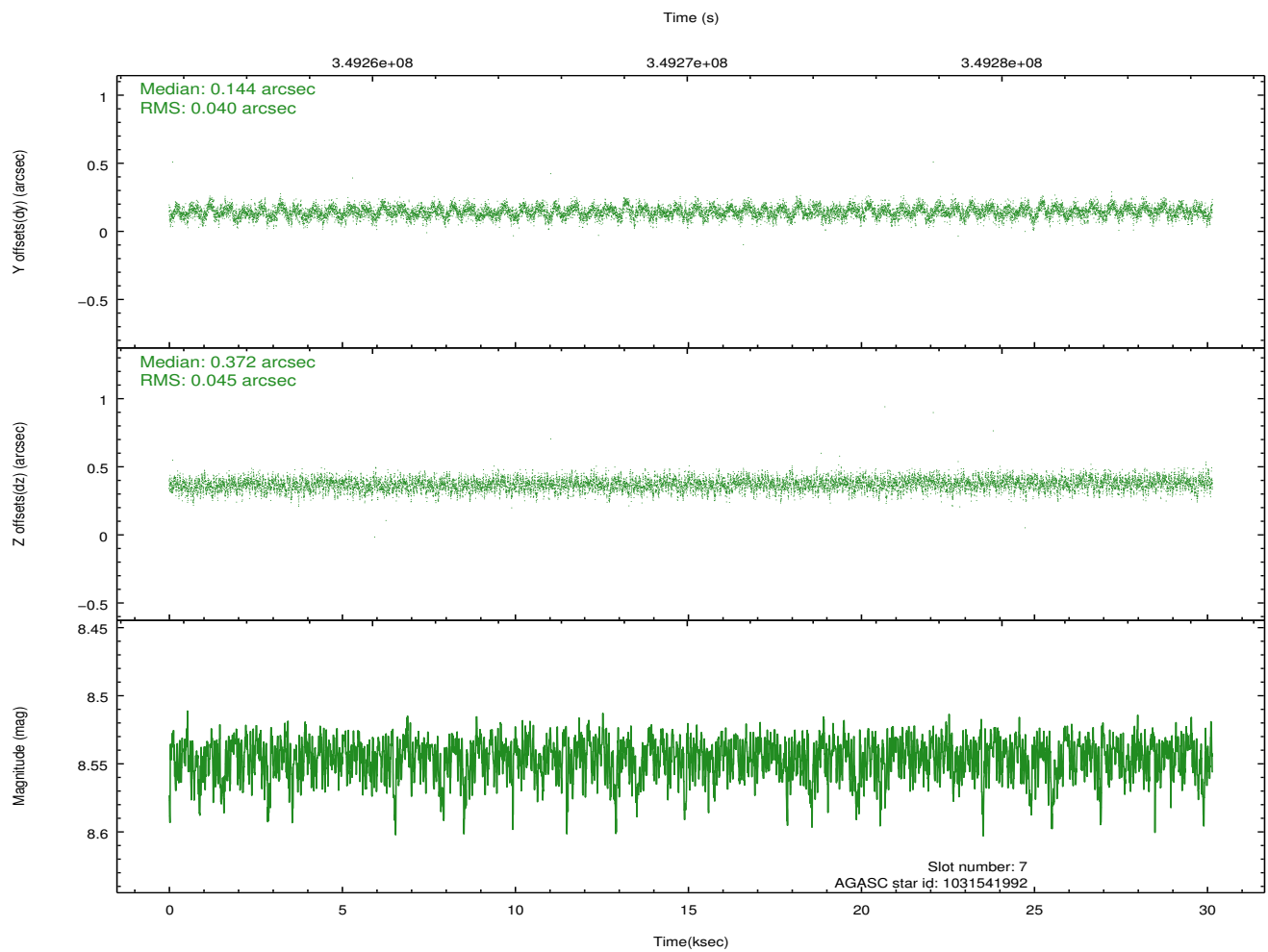
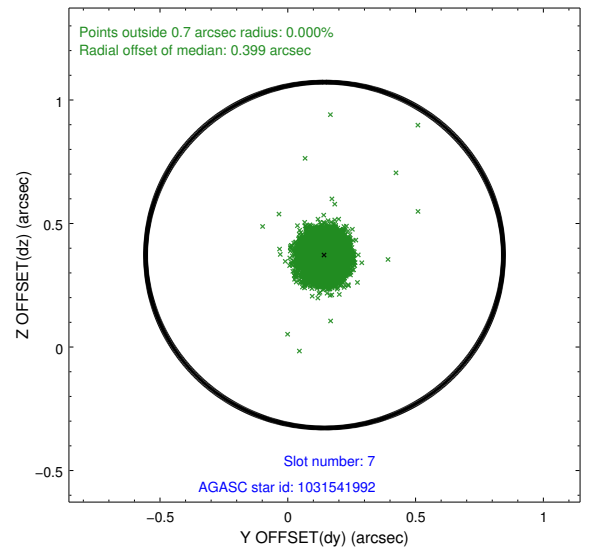
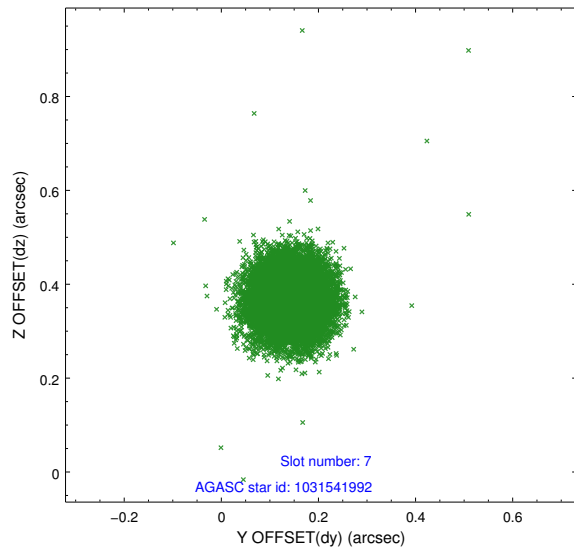
2.4.3 Slot 5



2.4.4 Slot 6

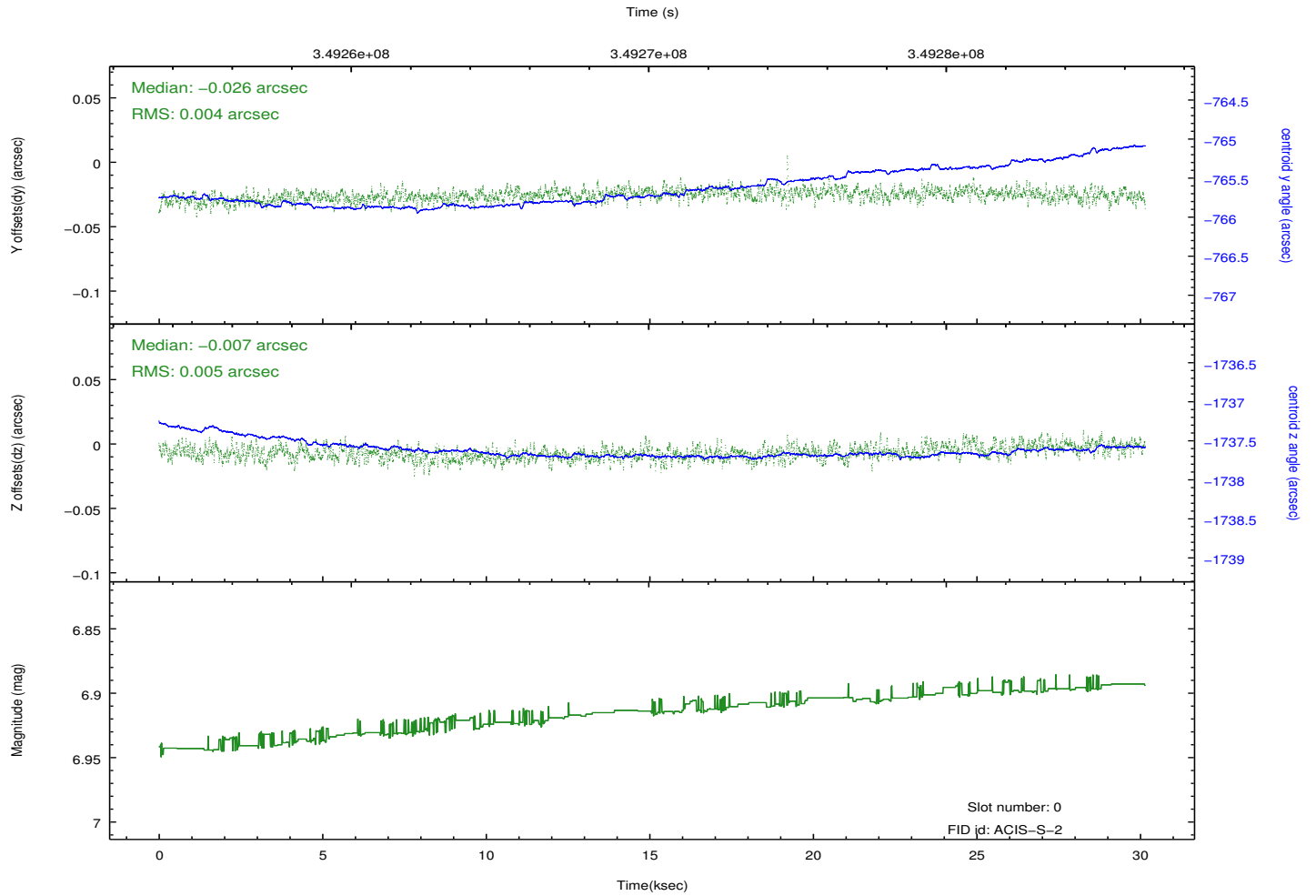
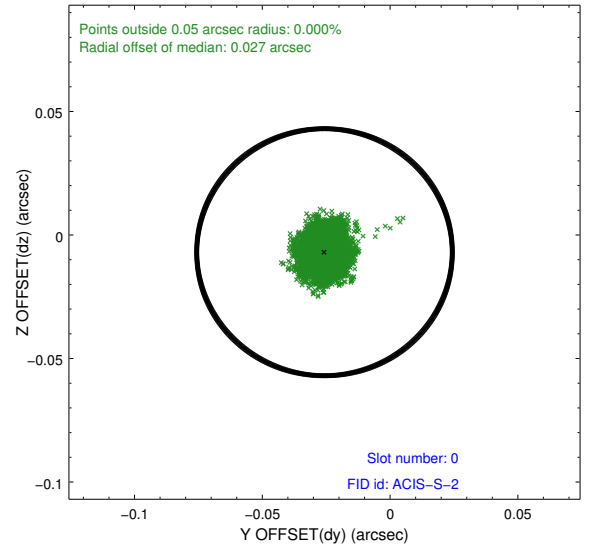
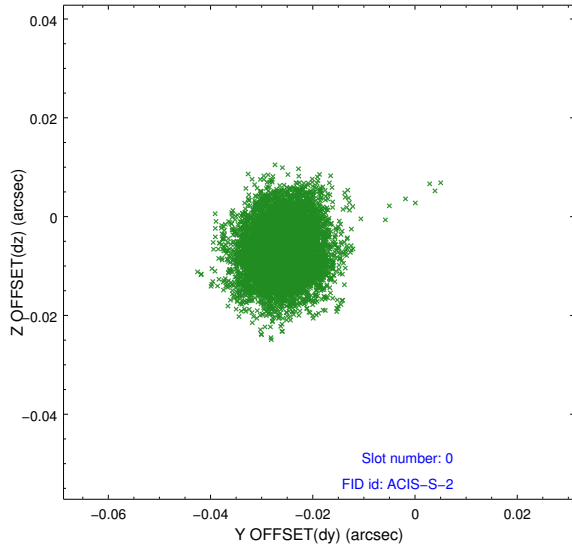


2.4.5 Slot 7

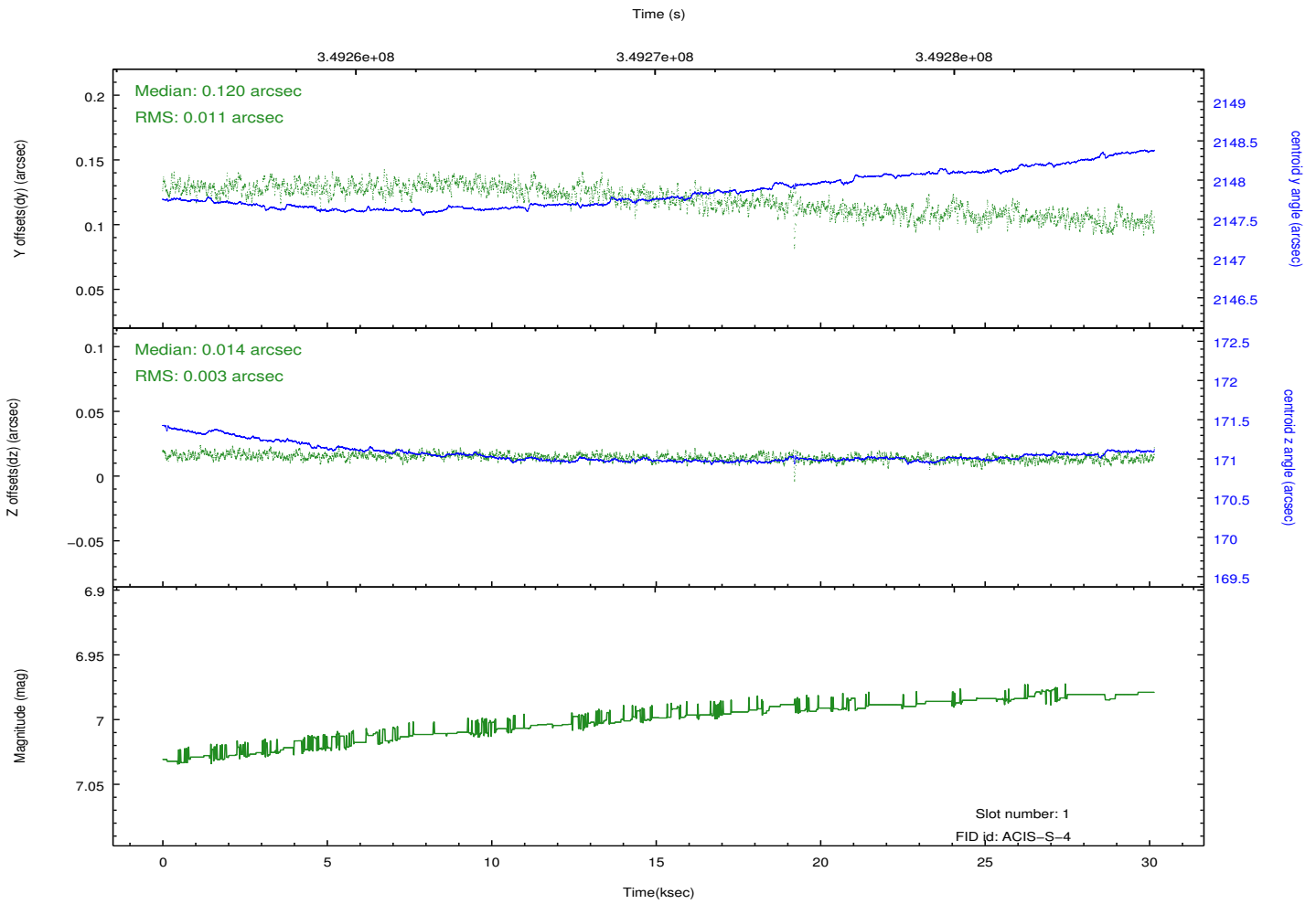
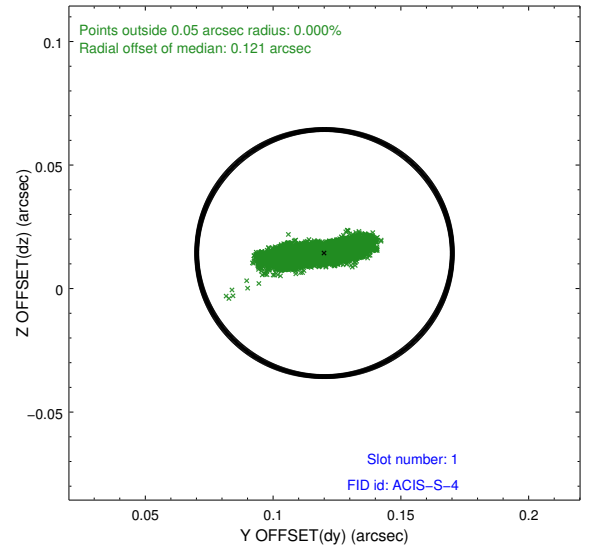
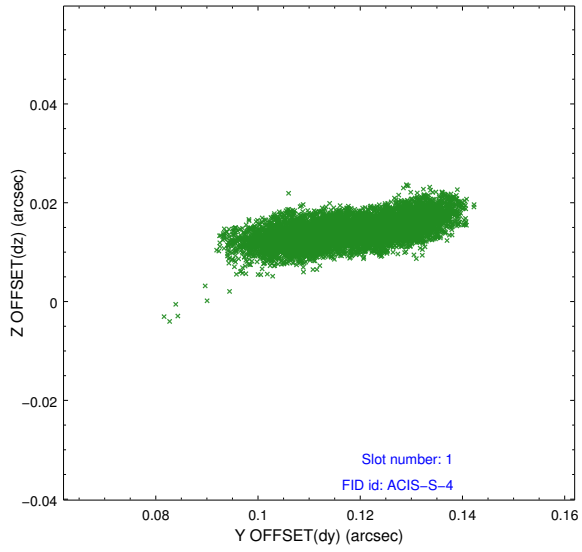


2.5 FID Slots

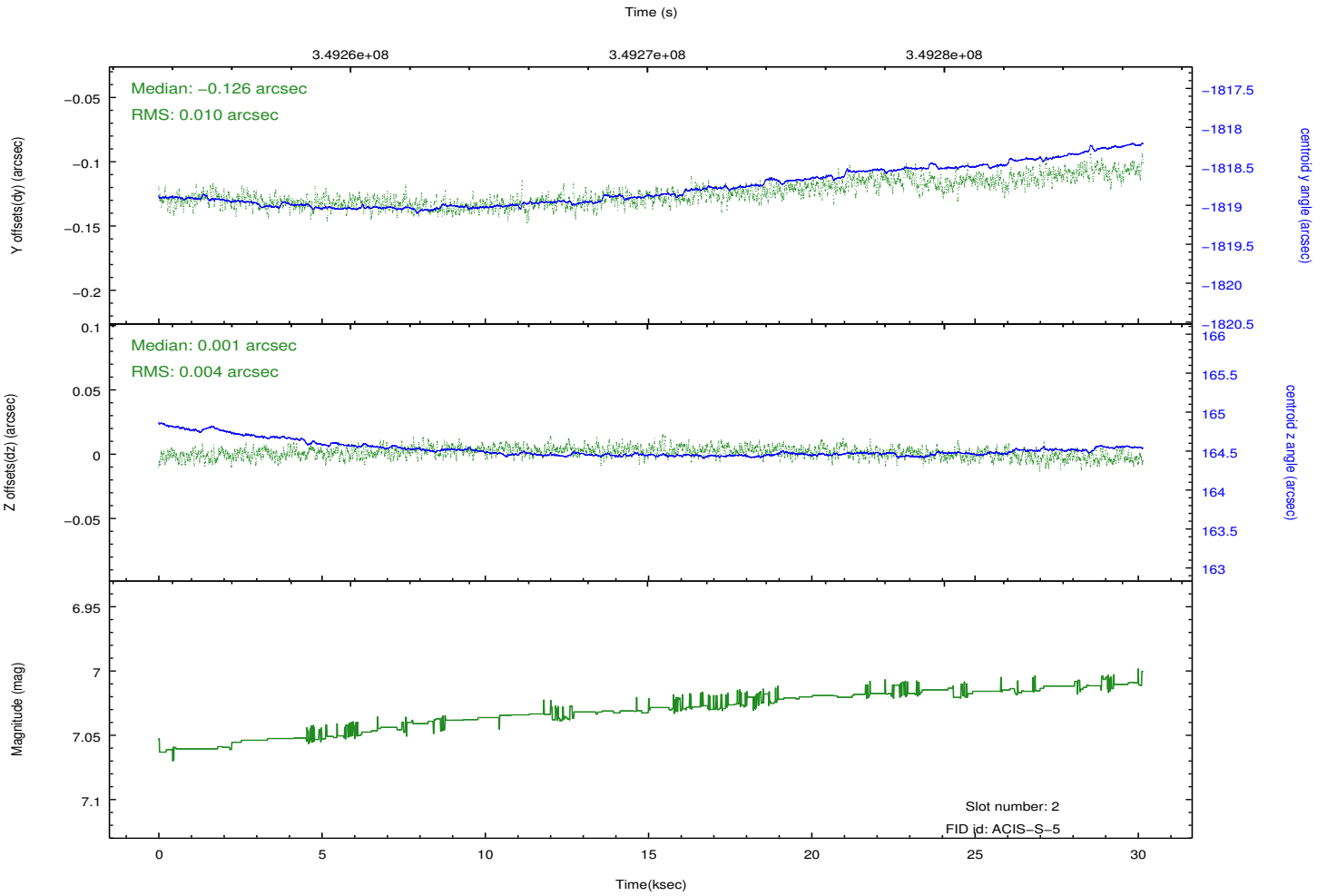
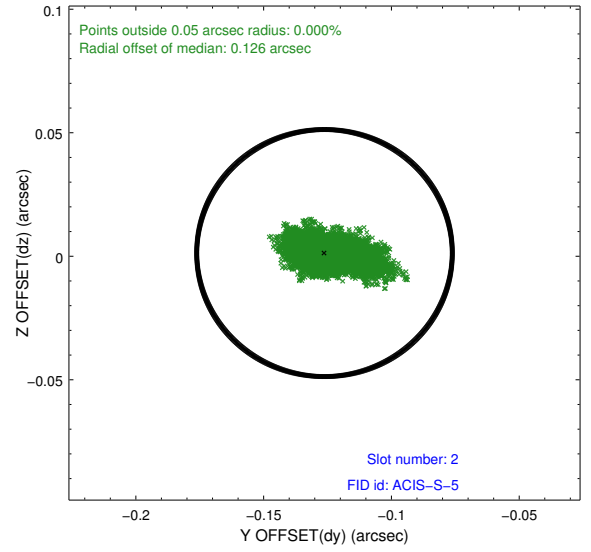
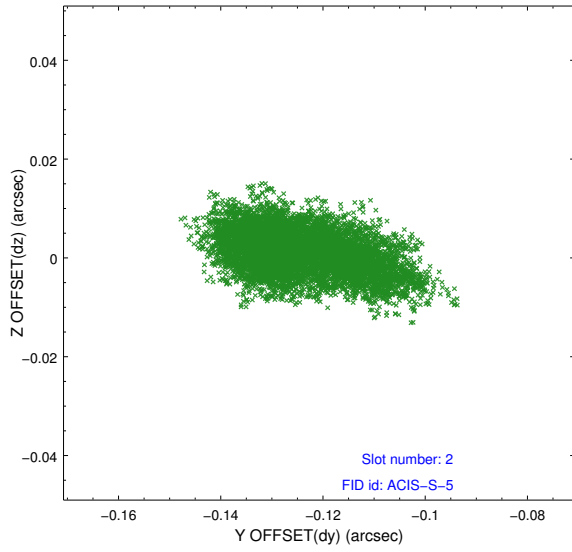
2.5.1 Slot 0



2.5.2 Slot 1



2.5.3 Slot 2



A Summary

A.1 Status

V&V Scientist	Joy Nichols
V&V Date (YYYY-MM-DD)	2012.05.30
V&V Edition	1
V&V Disposition and Status	OK
V&V Charge Time	30.1465

A.2 Comments