

V&V Reference Report

L2 ASCDS Version : 8.4.4

Observation 10683 - L2 Version 3
Chandra X-Ray Center

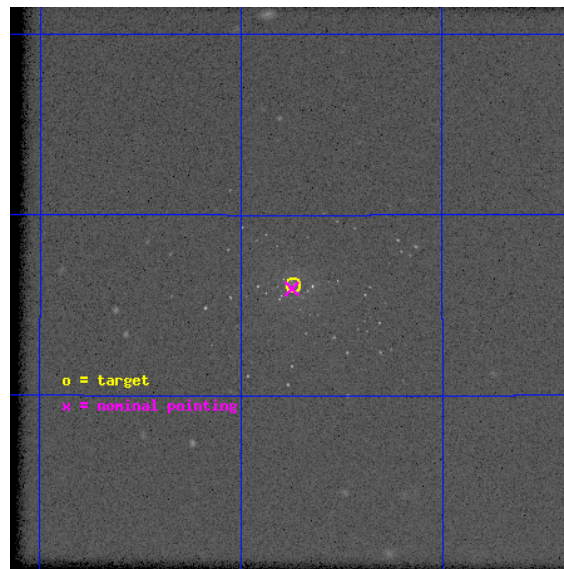
L2 Processing Date : Aug 13 2012

Contents

1	Front	2
2	OBI	3
2.1	OBI	3
2.1.1	Images	3
2.1.2	Parameters	4
2.1.3	Events	4
2.2	Compared Parameters	5
2.3	Aspect	6
2.4	Star Slots	9
2.4.1	Slot 3	9
2.4.2	Slot 4	10
2.4.3	Slot 5	11
2.4.4	Slot 6	12
2.4.5	Slot 7	13
2.5	FID Slots	14
2.5.1	Slot 0	14
2.5.2	Slot 1	15
2.5.3	Slot 2	16
A	Summary	17
A.1	Status	17
A.2	Comments	17

1 Front

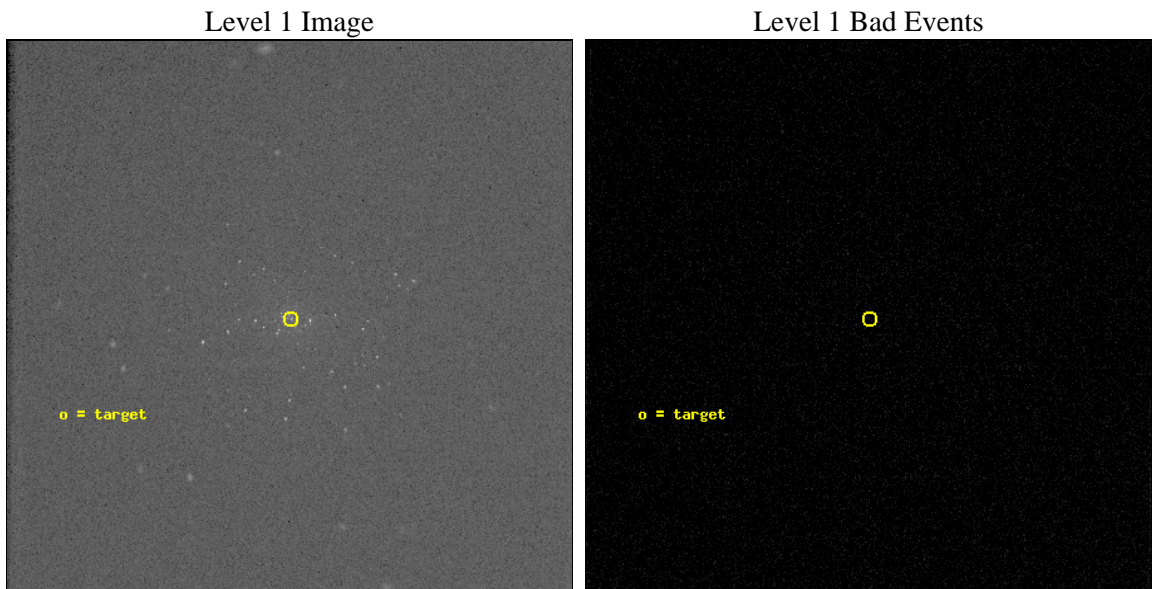
seq_num	300257	Sequence number
obs_id	10683	Observation id
title	Resolving short supersoft source states of optical novae in the core of M31	Proposal title
observer	Dr. Peter Predehl	Principal investigator
object	M31	Source name
ra_targ	10.684583	Observer's specified target RA [deg]
dec_targ	41.269278	Observer's specified target Dec [deg]
ra_nom	10.68687519149	Nominal RA [deg]
dec_nom	41.265458400104	Nominal Dec [deg]
roll_nom	315.65753908854	Nominal Roll [deg]
revision	3	Processing version of data
ontime	20128.182248294	[s]
livetime	19897.57583981	Ontime multiplied by DTCOR
l2events	1418294	Number of level 2 events



2 OBI

2.1 OBI

2.1.1 Images



2.1.2 Parameters

obi_num	0	Obi number	sched_exp_time	20000.000000	[s] Scheduled observation exposure time
ascdsver	8.4.5	Processing system revision	ontime	20128.182248294	[s]
caldbver	4.5.1.1	 	l1events	2303965	Number of level 1 events
date	2012-08-13T03:15:50	Date and time of file creation			
revision	3	Processing version of data			

2.1.3 Events

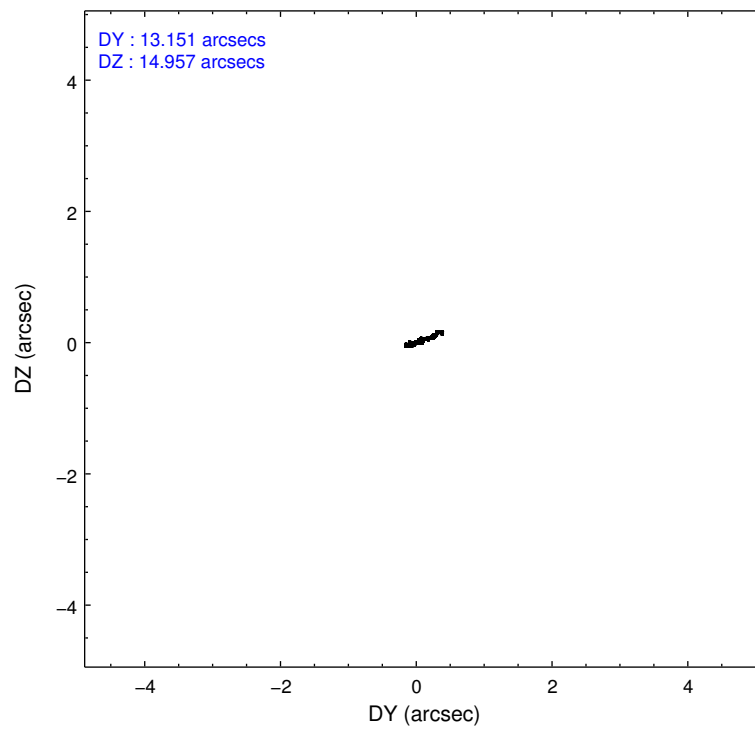
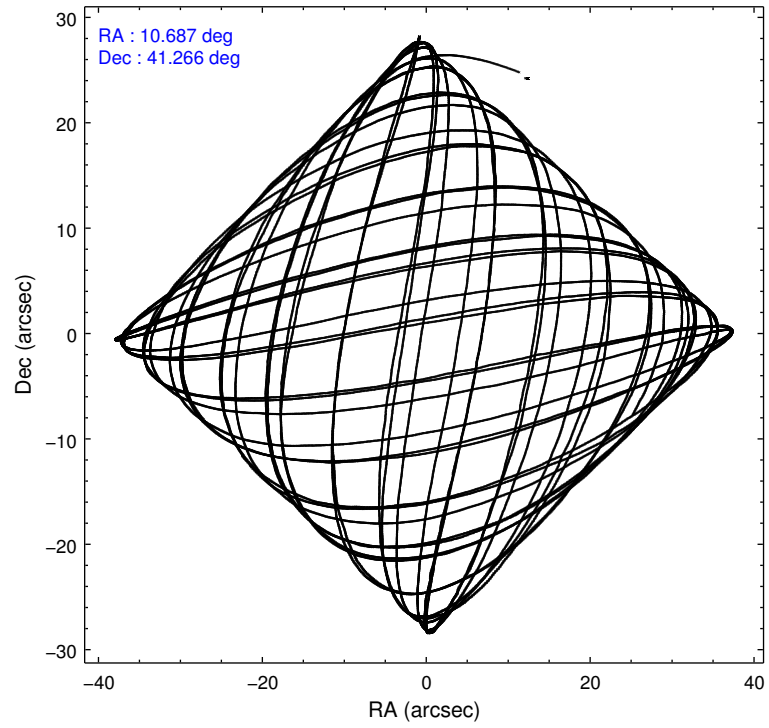
Level 1 Events

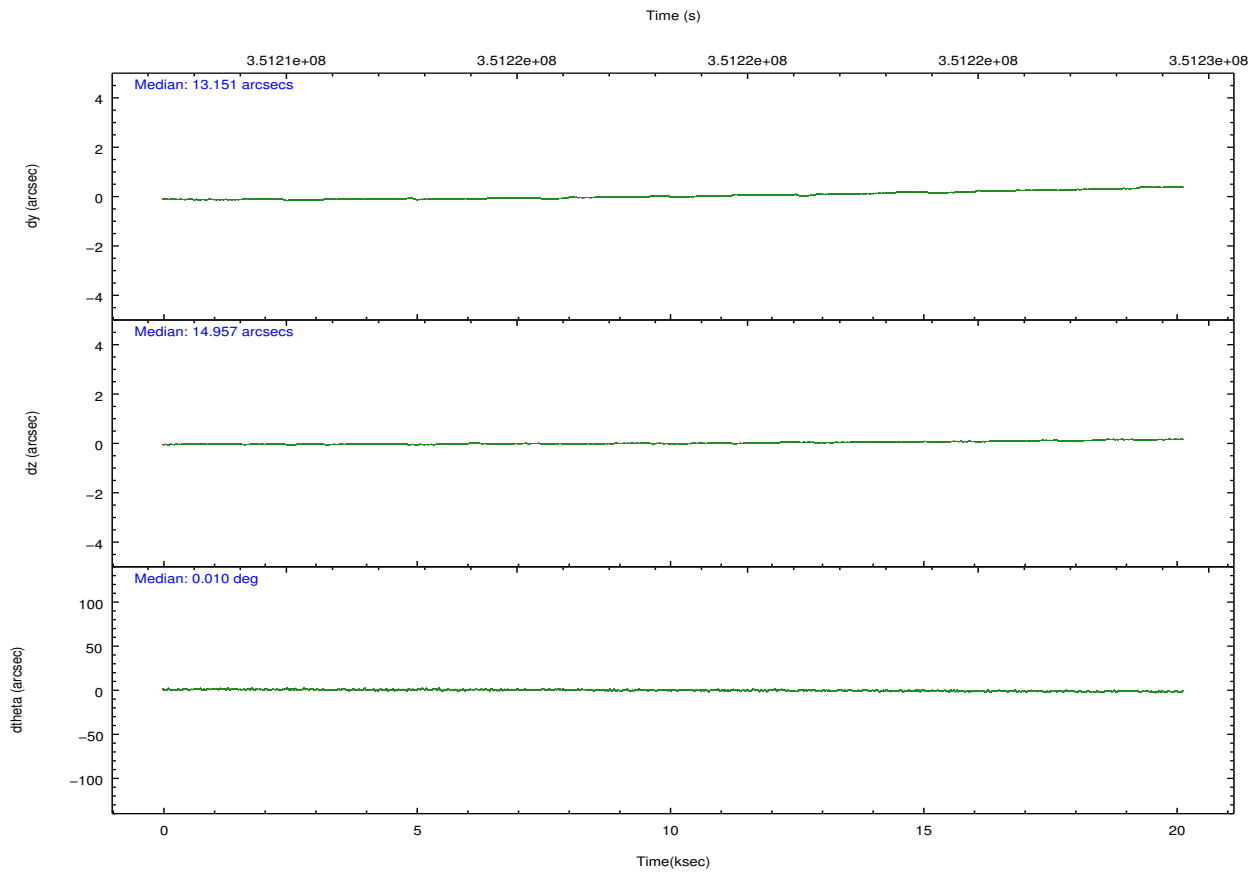
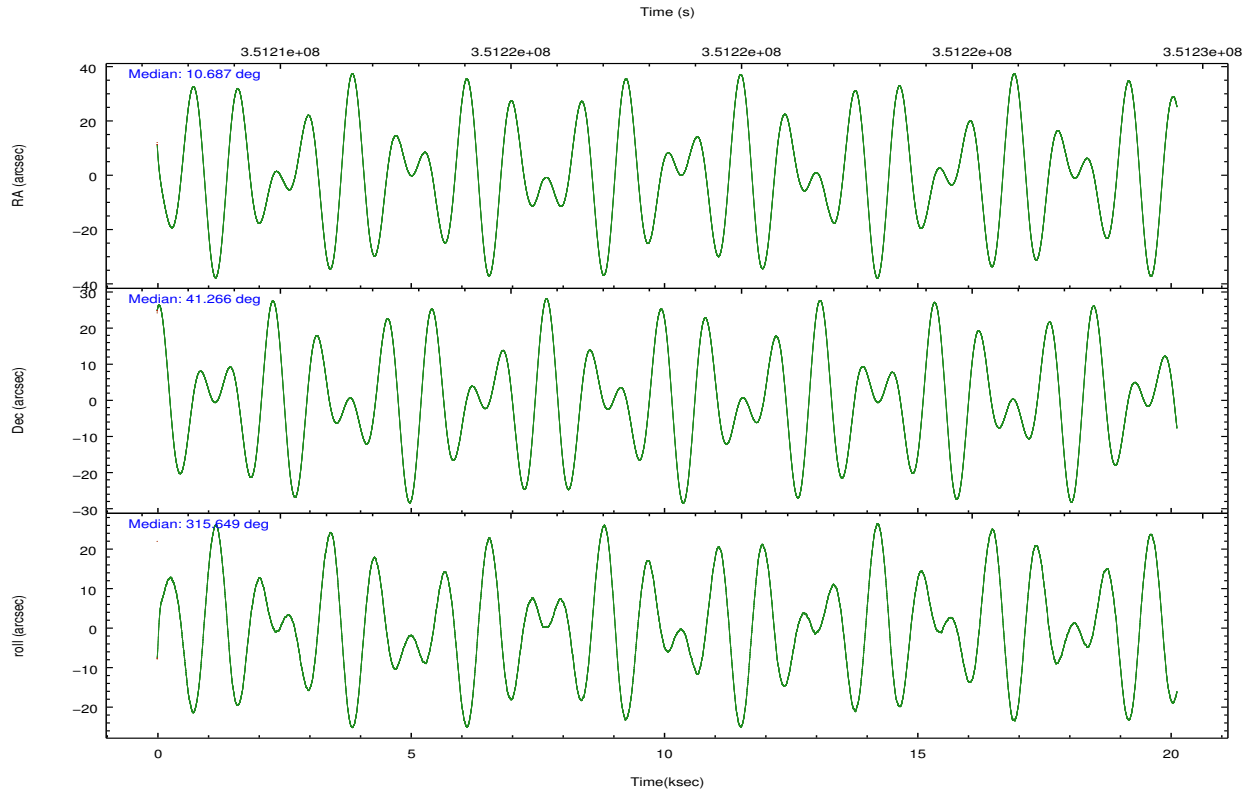
	segment 0
level 1 events	2303965
rejected events	252477
rejected %	10%

2.2 Compared Parameters

Parameter	Planned	Actual	Parameter	Planned	Actual
Instrument	HRC	HRC	Obspar format version number	7	7
Detector	HRC-I	HRC-I	Obspar file type	PREDICTED	ACTUAL
Grating	NONE	NONE	Obspar update status	NONE	UPDATED
Data mode	OBSERVING	OBSERVING			
Observation mode	POINTING	POINTING			
[deg] Pointing RA	10.651607	10.68687519148965			
[deg] Pointing Dec	41.271544	41.2654584001043			
[deg] Pointing Roll	315.776299	315.6575390885384			
[s] Window start time (MET)	351043266.184000	351043266.184000			
[s] Window stop time (MET)	351302406.184000	351302406.184000			
[mm] SIM focus pos	-1.040293	-1.038866356238299			
[mm] SIM defocus	0	0.001426264420575141			
[mm] SIM translation stage pos	126.985494	126.9829799899862			
[mm] SIM translation stage offset	0	0.002508901615314585			
[s] Observation start time (MET)	351208435.184000	351206959.54834			
Observation start date	2009-02-16T21:52:49	2009-02-16T21:29:19			
[s] Observation end time (MET)	351228435.184000	351229624.34947			
Observation end date	2009-02-17T03:26:09	2009-02-17T03:47:04			

2.3 Aspect



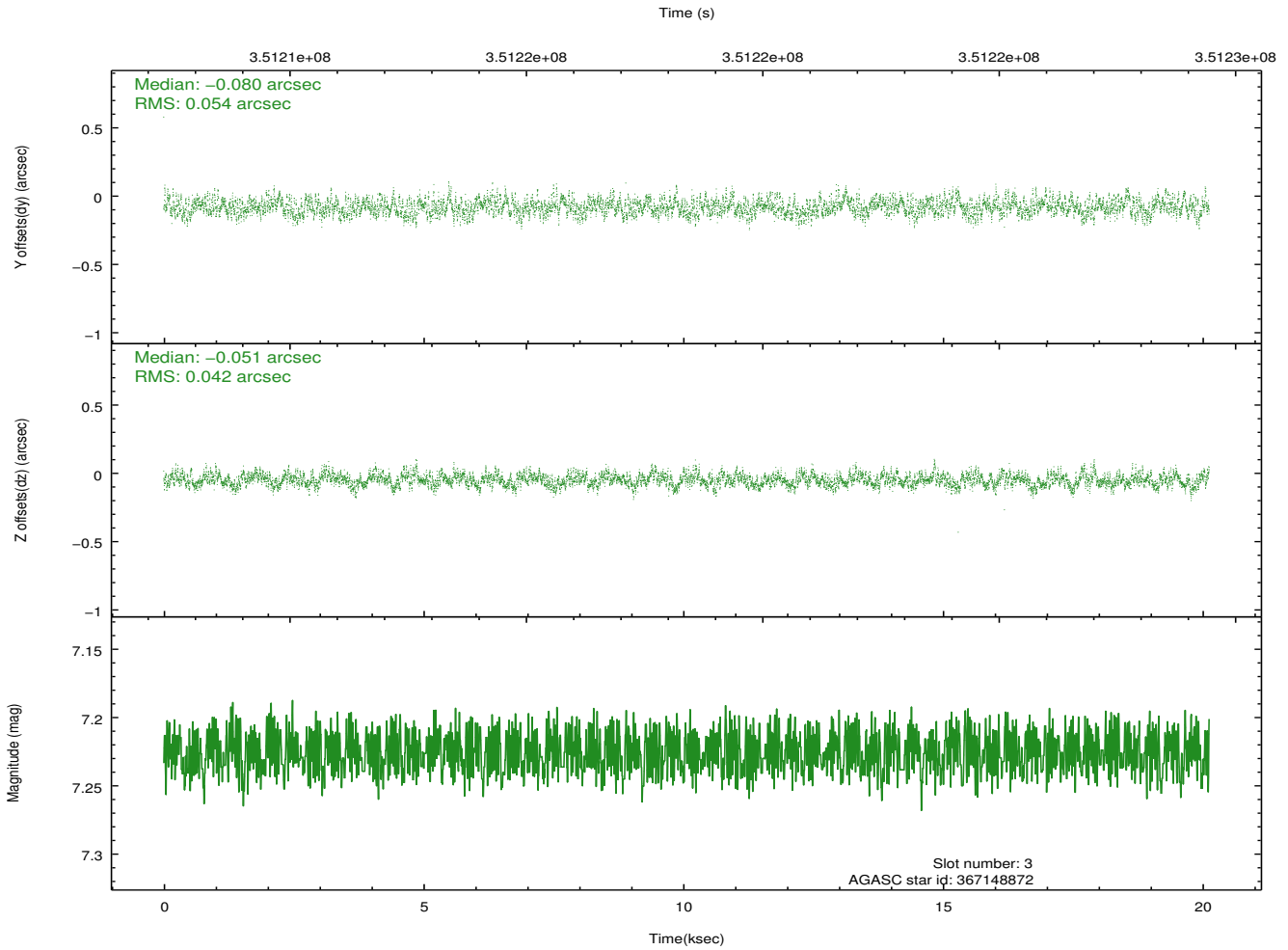
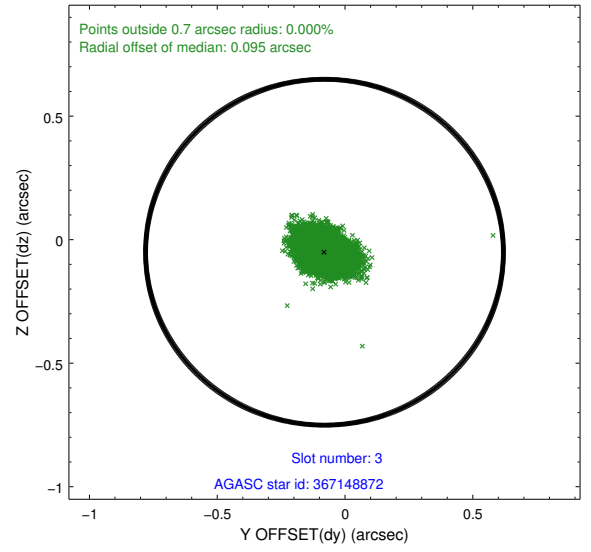
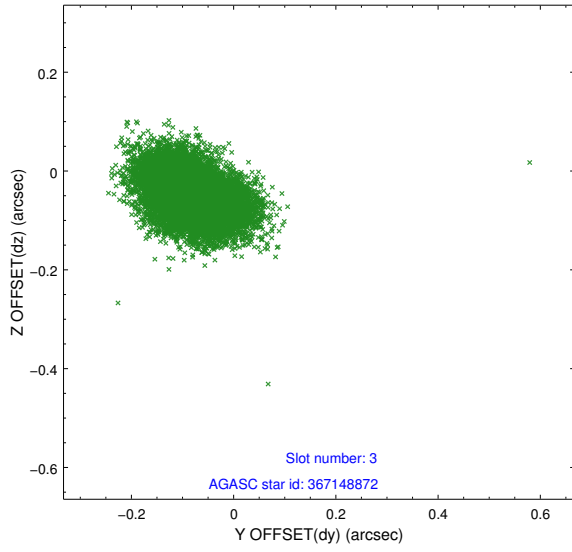


Slot Statistics

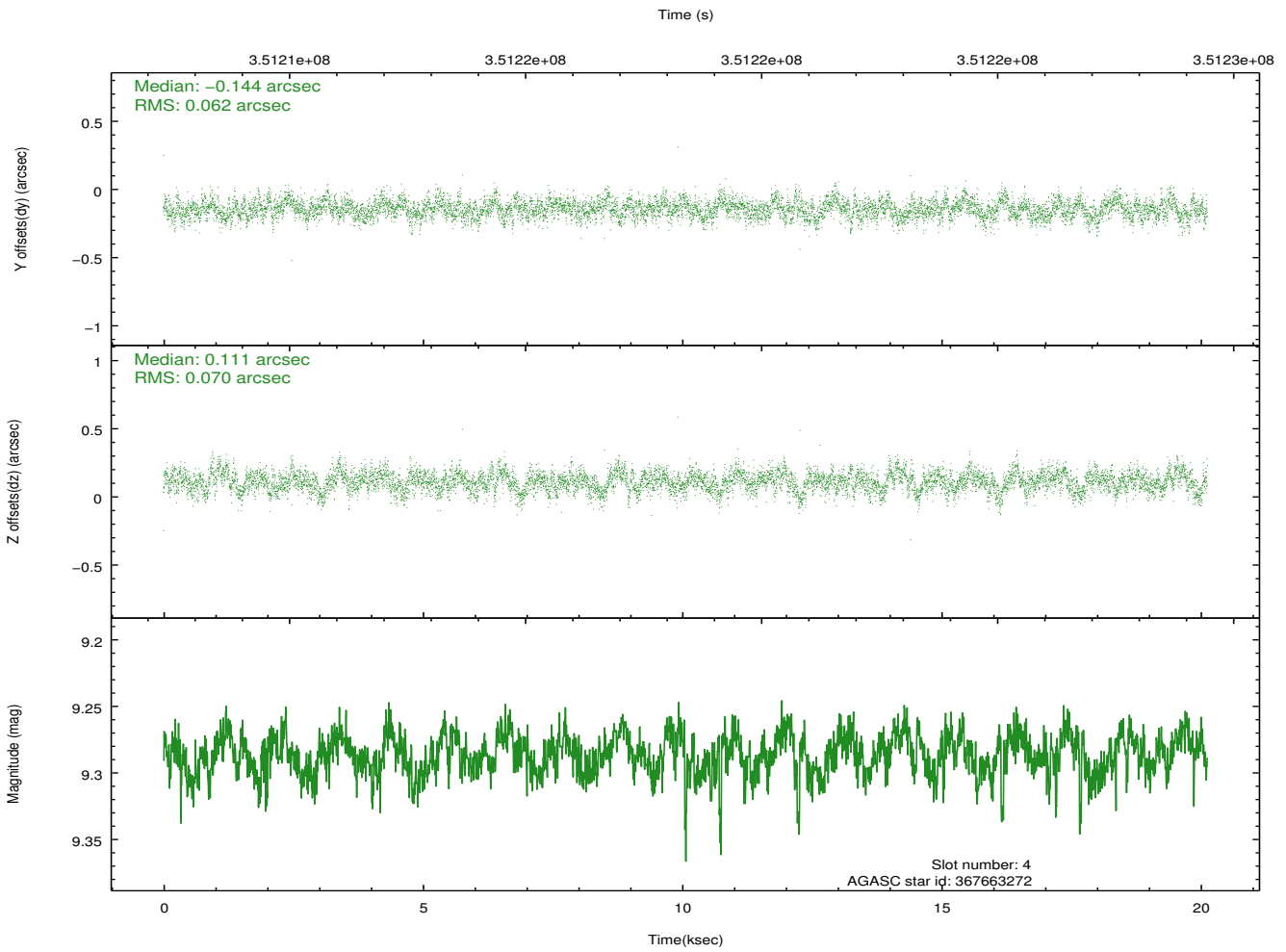
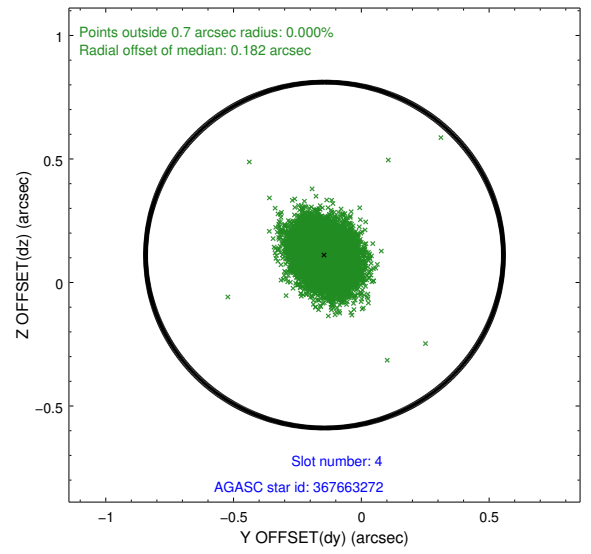
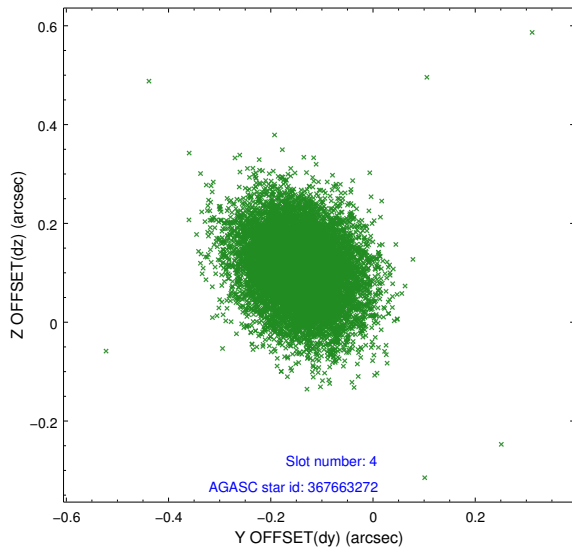
slot	status	id	mag	n_pts	med_dy	med_dz	dr1	dr2	ra	dec	mean_y	mean_z
0	FID	HRC-I-1	7.02	4910	-0.161	-0.063	0.007	0.012	0.000000	0.000000	-769.15	-1303.10
1	FID	HRC-I-2	7.07	4910	0.205	-0.073	0.007	0.012	0.000000	0.000000	843.69	-1304.99
2	FID	HRC-I-4	7.05	4910	0.072	0.044	0.006	0.011	0.000000	0.000000	1274.12	998.85
3	GUIDE	367148872	7.23	9818	-0.080	-0.051	0.072	0.118	10.505940	40.688258	1180.30	-1782.33
4	GUIDE	367663272	9.29	9809	-0.144	0.111	0.099	0.161	10.656279	41.699429	-1065.43	1111.59
5	GUIDE	367674552	8.85	9803	-0.077	0.054	0.083	0.133	11.016238	41.570845	-49.02	1458.70
6	GUIDE	367145856	9.31	9806	0.235	-0.223	0.113	0.190	10.744946	40.402085	2367.32	-2064.56
7	GUIDE	367657272	8.43	9815	0.067	0.109	0.070	0.112	11.834471	41.298907	2209.10	2317.70

2.4 Star Slots

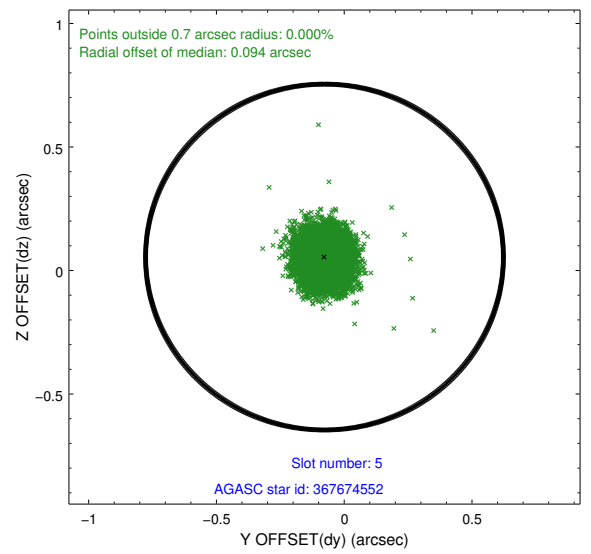
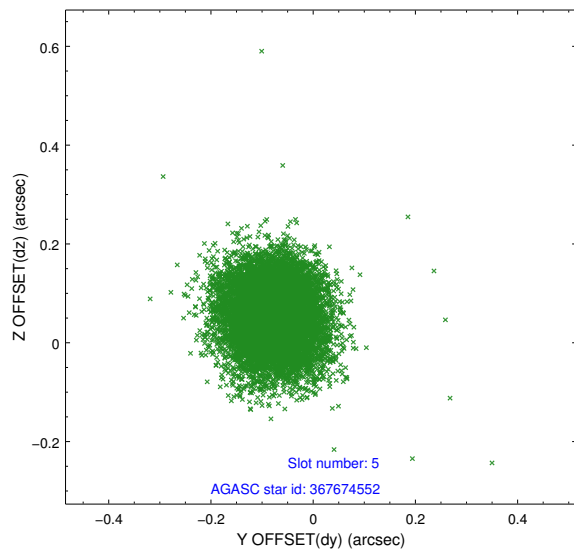
2.4.1 Slot 3



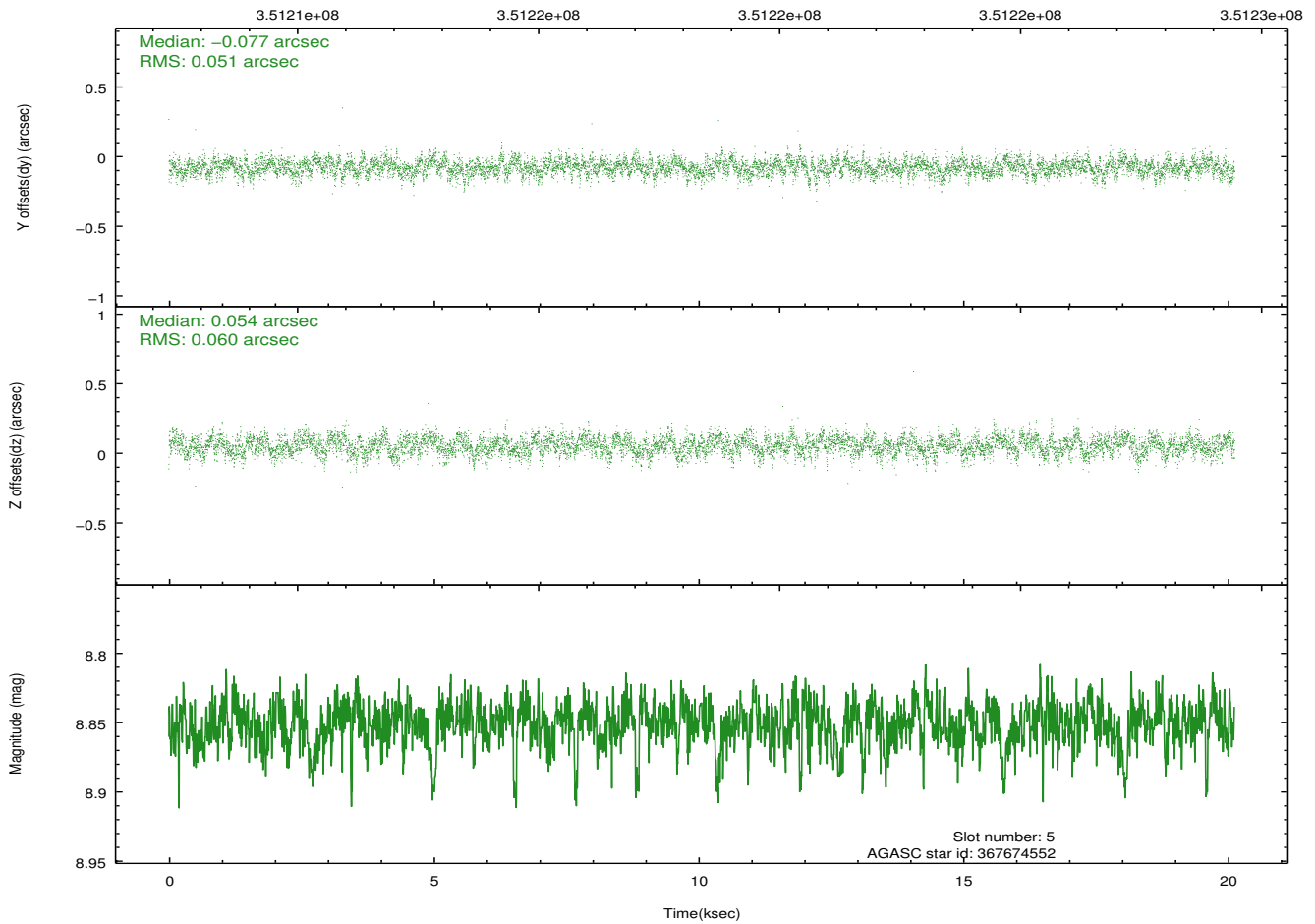
2.4.2 Slot 4



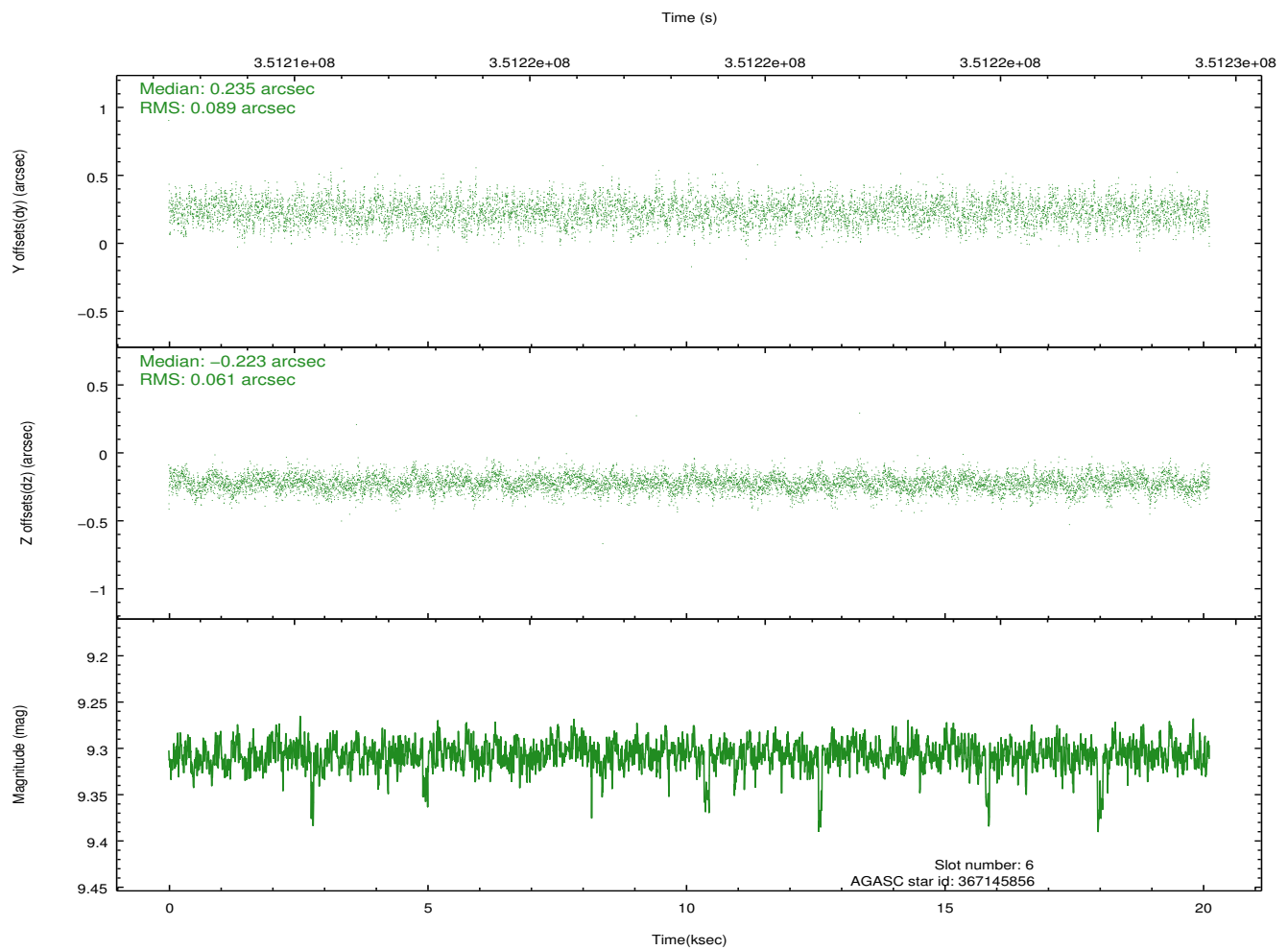
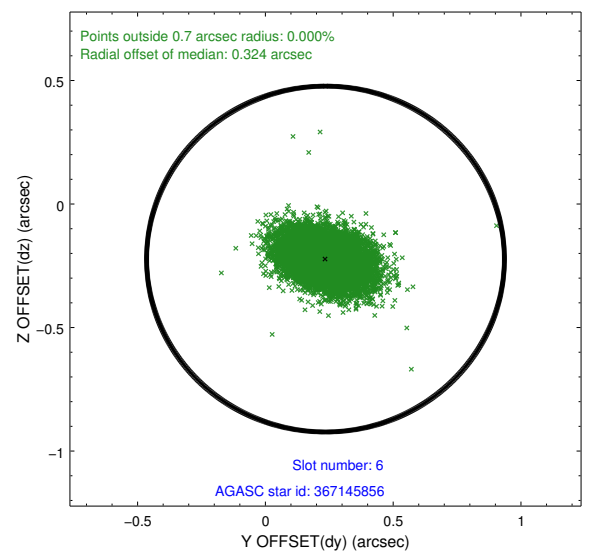
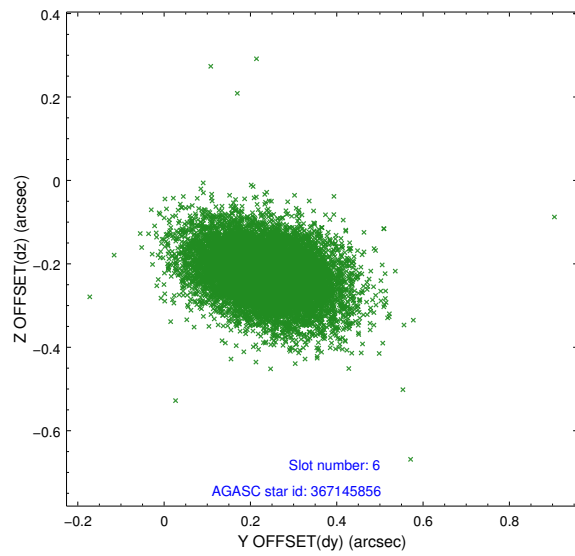
2.4.3 Slot 5



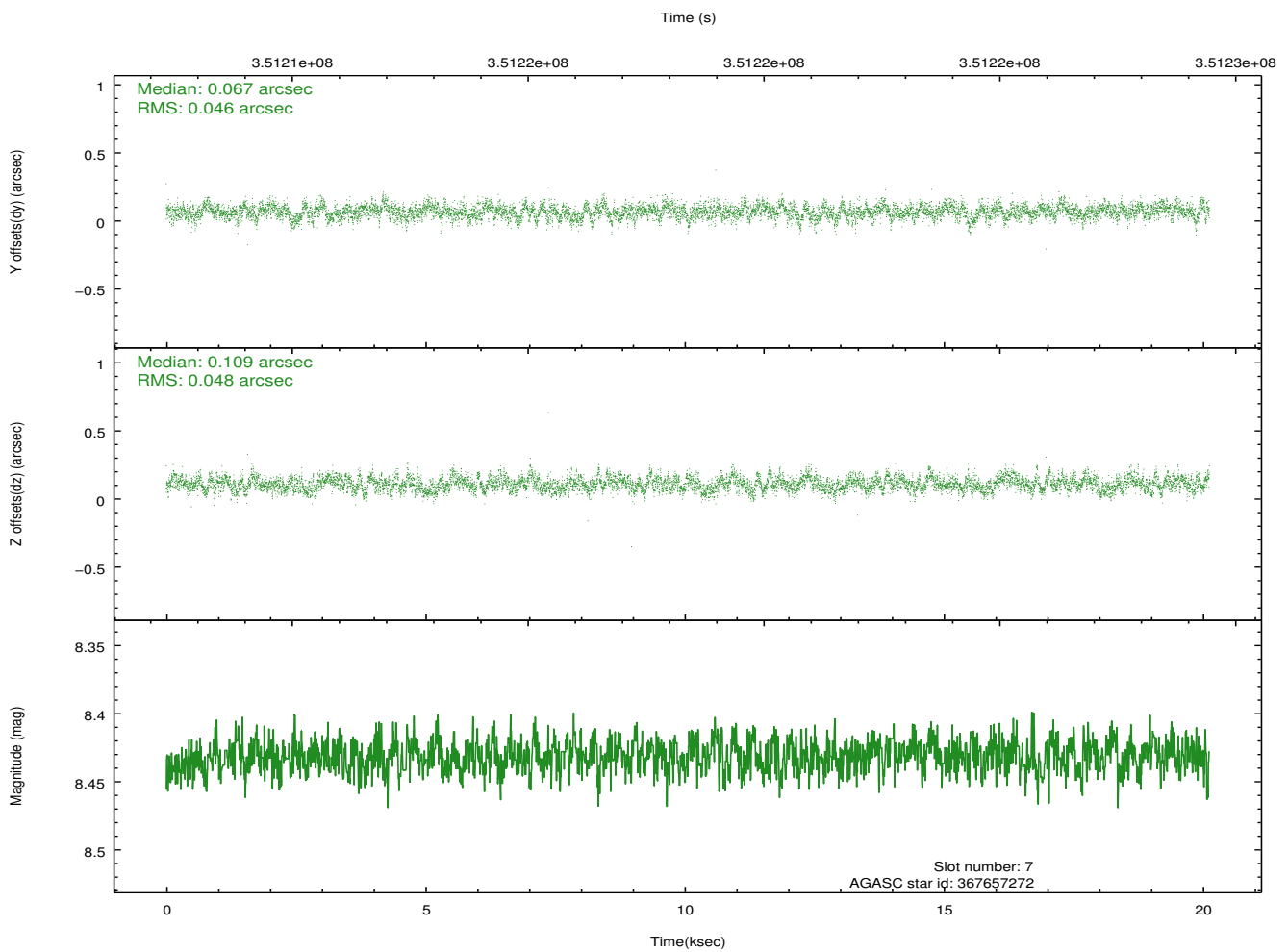
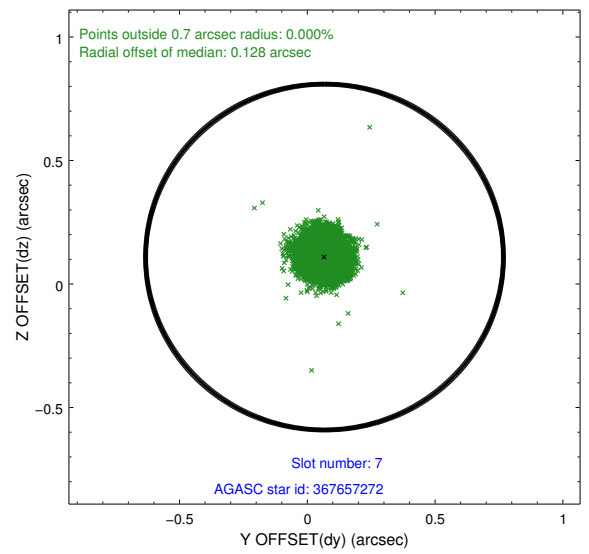
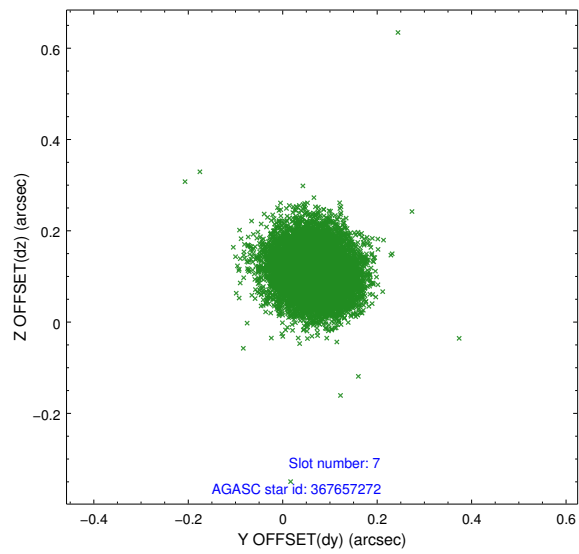
Time (s)



2.4.4 Slot 6

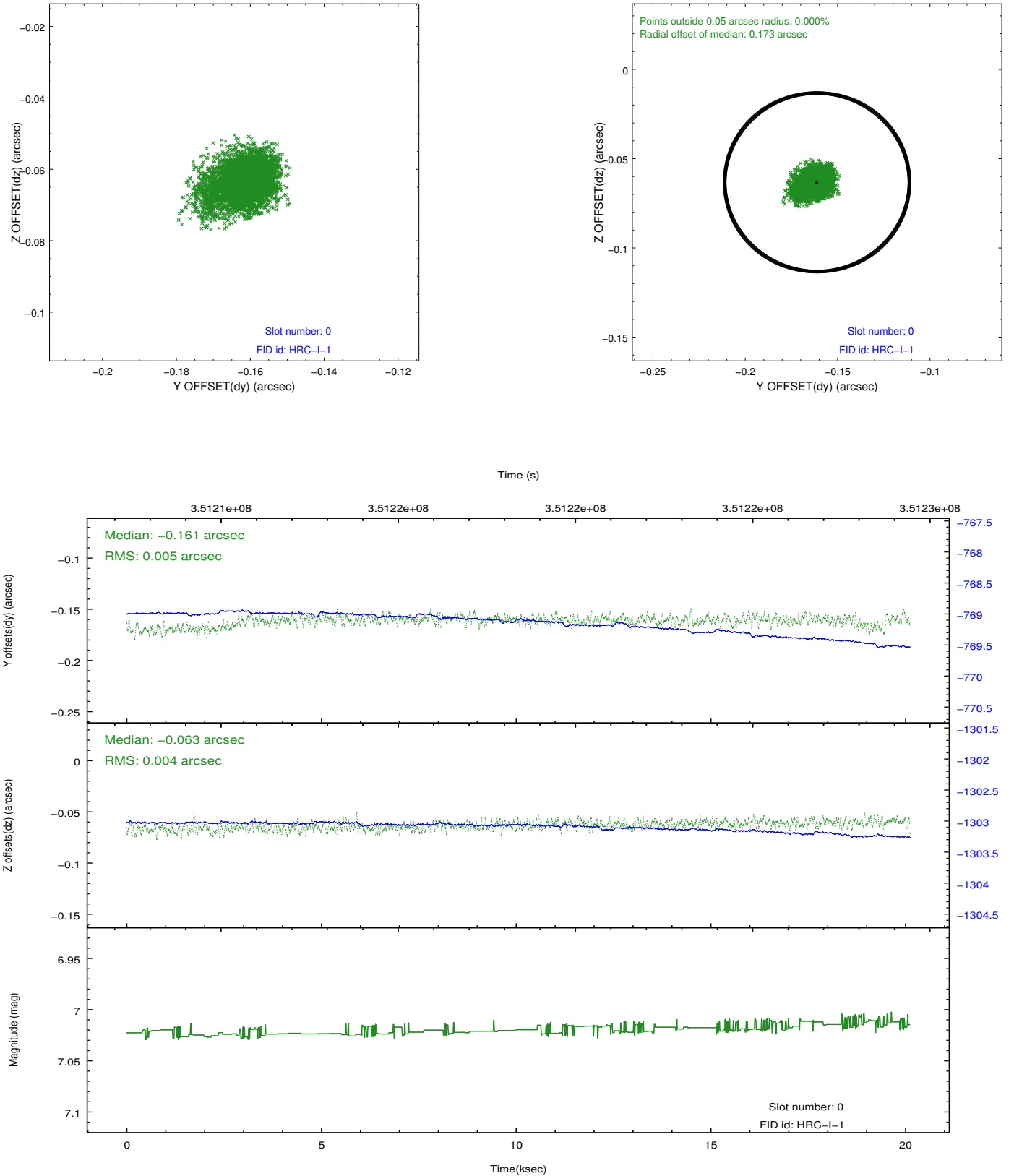


2.4.5 Slot 7

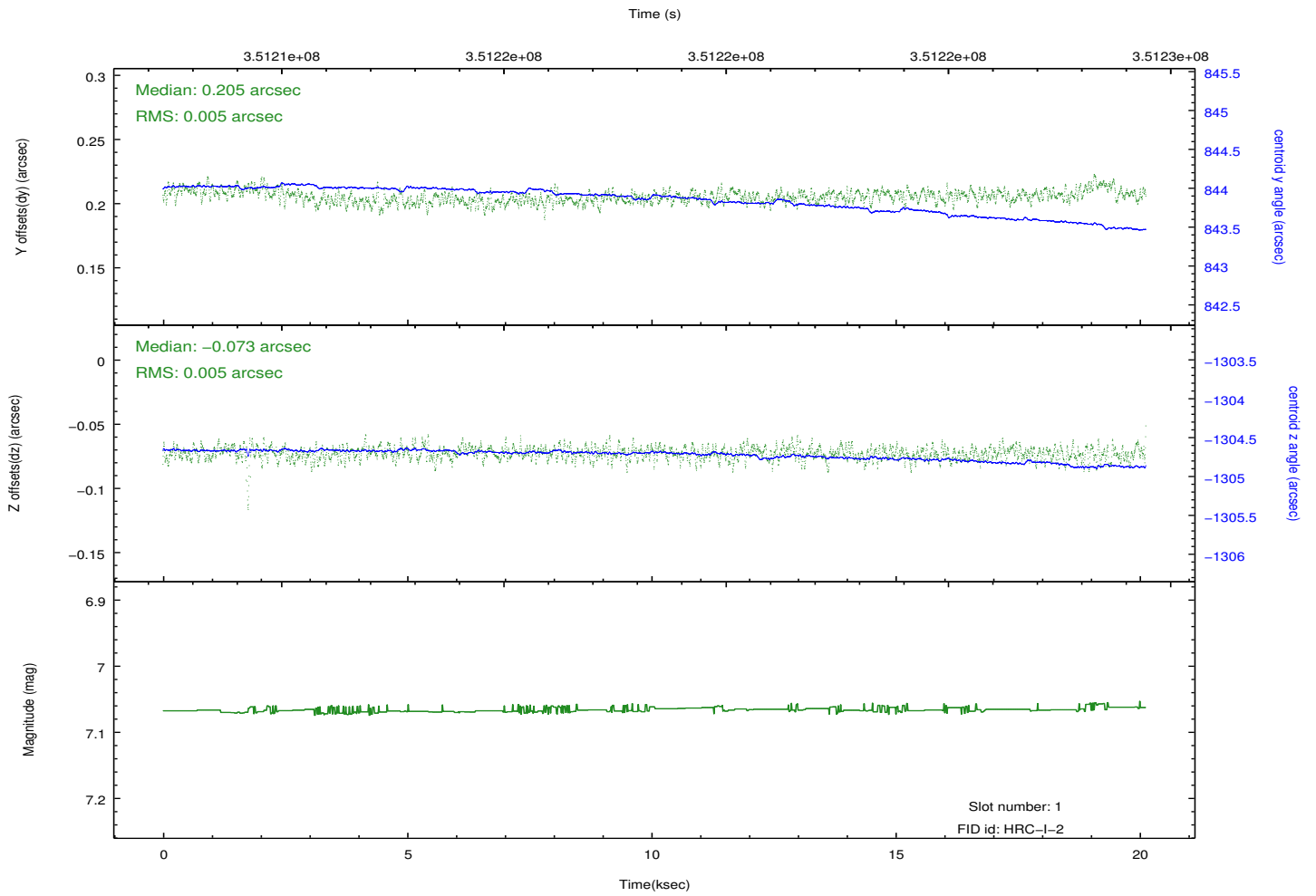
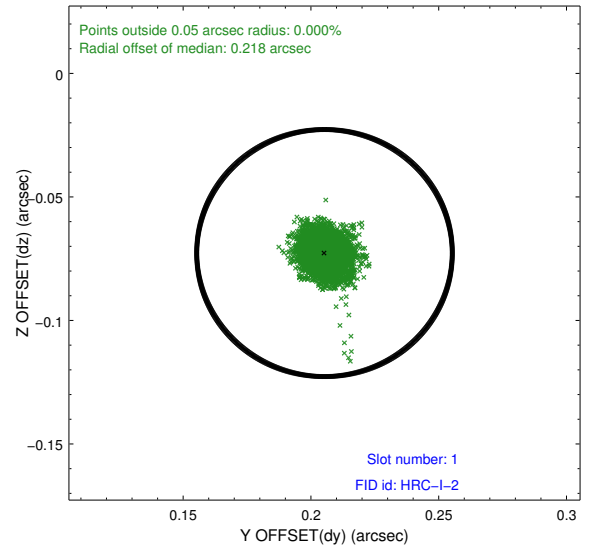
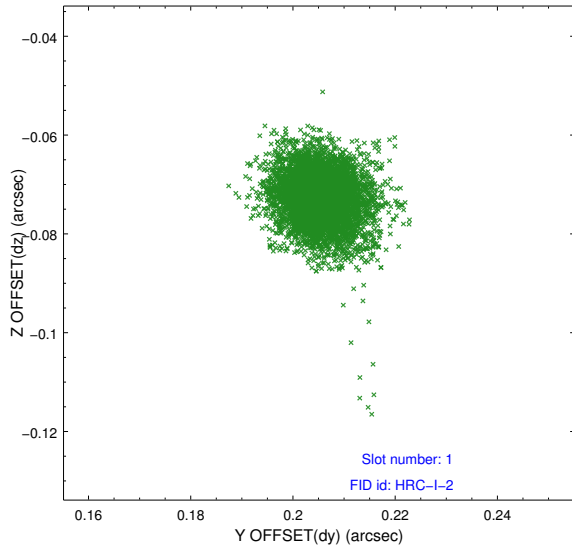


2.5 FID Slots

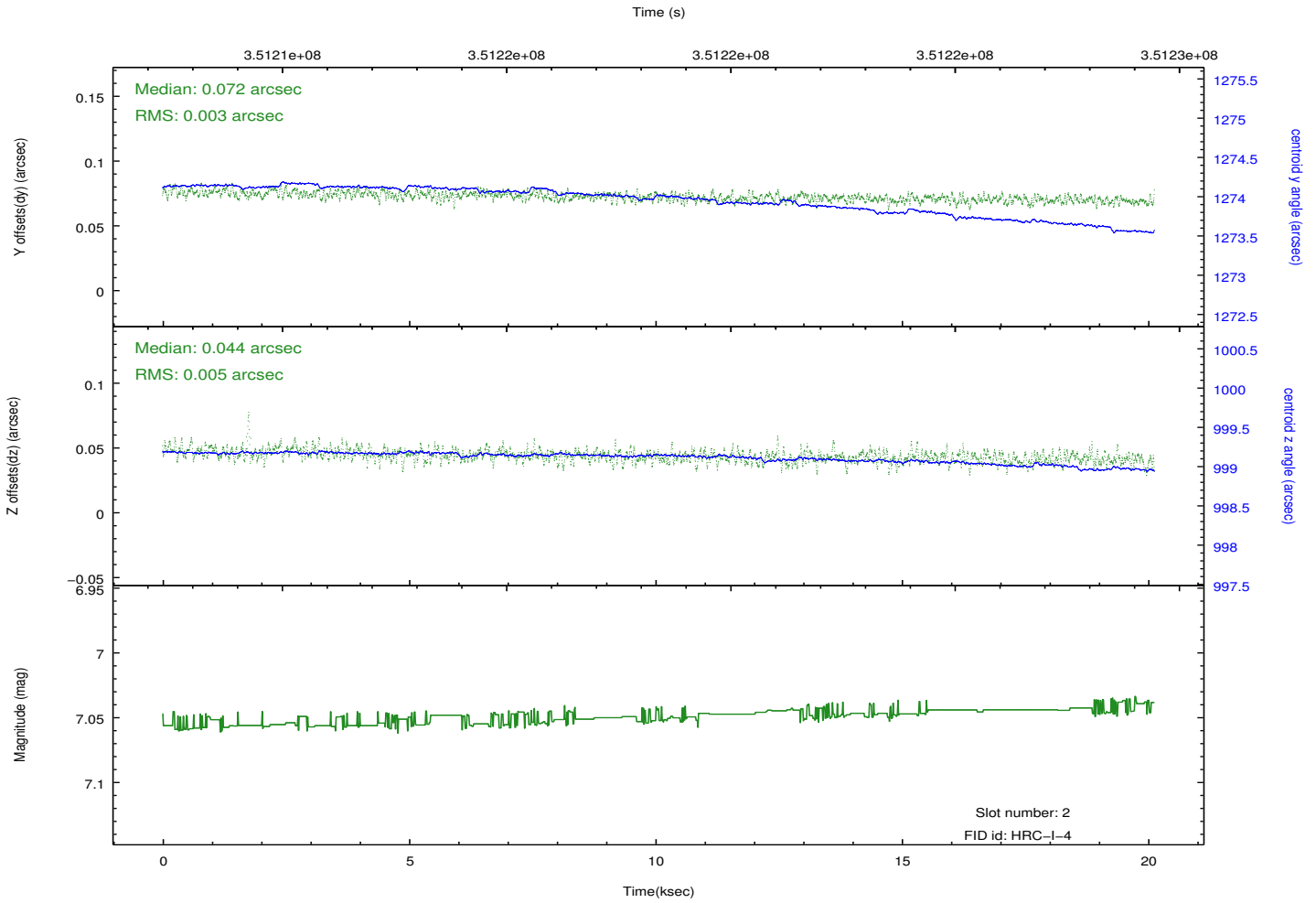
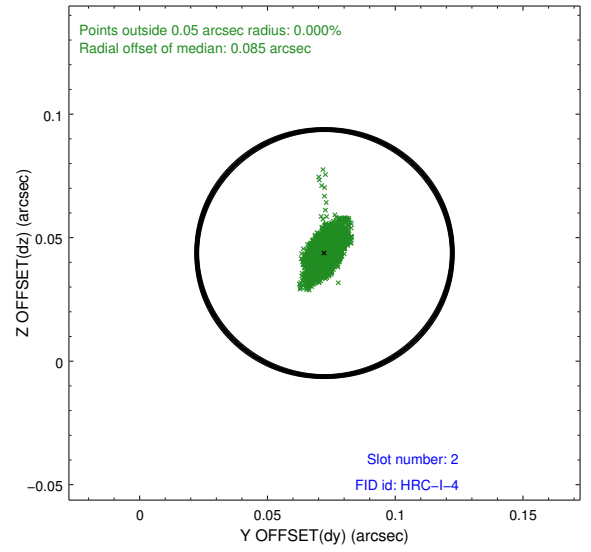
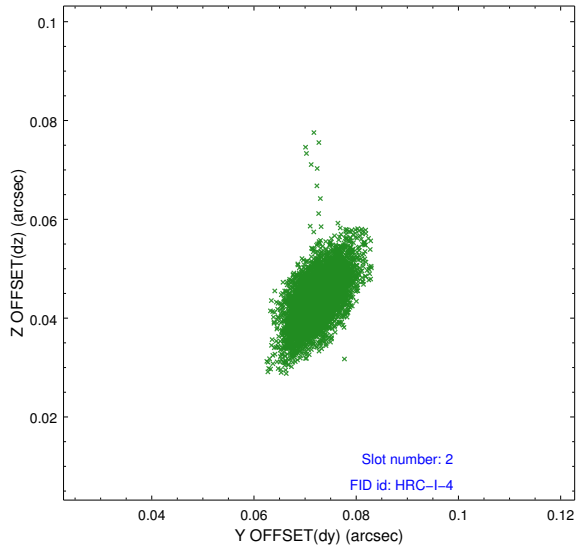
2.5.1 Slot 0



2.5.2 Slot 1



2.5.3 Slot 2



A Summary

A.1 Status

V&V Scientist	Jen Lauer
V&V Date (YYYY-MM-DD)	2012.08.20
V&V Edition	1
V&V Disposition and Status	OK
V&V Charge Time	20.1281822

A.2 Comments

Window constraint OK.