

V&V Reference Report

L2 ASCDS Version : 8.4.4

Observation 10763 - L2 Version 2
Chandra X-Ray Center

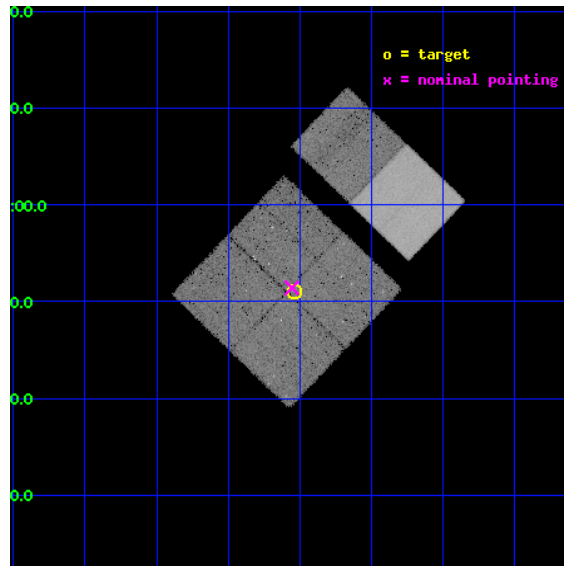
L2 Processing Date : May 24 2012

Contents

1	Front	2
2	OBI	3
2.1	OBI	3
2.1.1	Images	3
2.1.2	Bias	3
2.1.3	Parameters	4
2.1.4	Events	4
2.2	Compared Parameters	5
2.3	Aspect	6
2.4	Star Slots	9
2.4.1	Slot 3	9
2.4.2	Slot 4	10
2.4.3	Slot 5	11
2.4.4	Slot 6	12
2.4.5	Slot 7	13
2.5	FID Slots	14
2.5.1	Slot 0	14
2.5.2	Slot 1	15
2.5.3	Slot 2	16
A	Summary	17
A.1	Status	17
A.2	Comments	17

1 Front

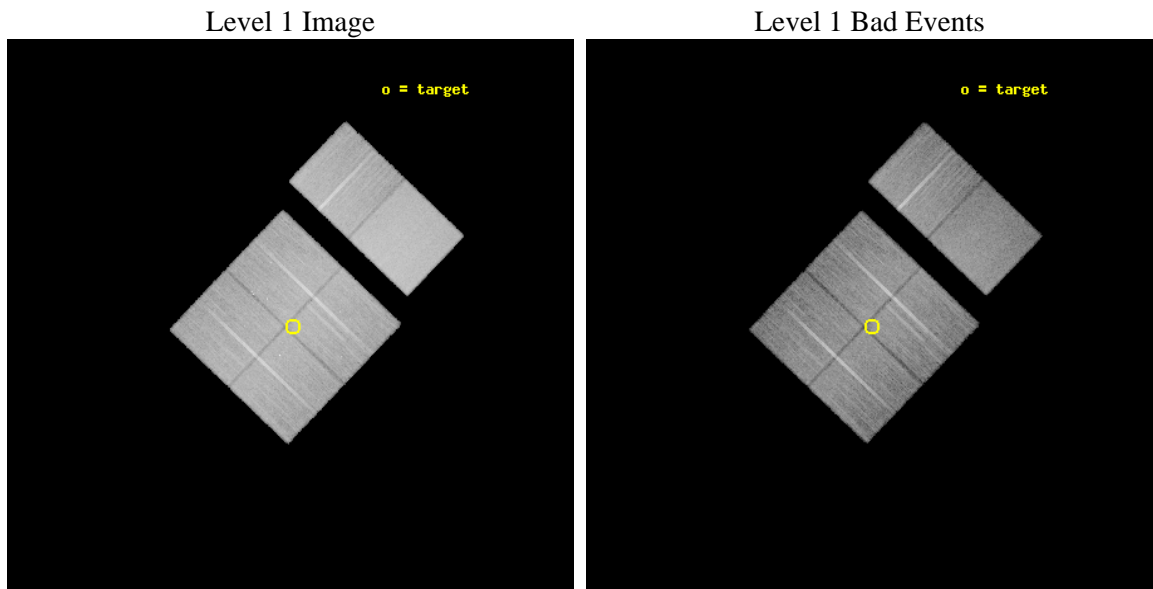
seq_num	200472	Sequence number
obs_id	10763	Observation id
title	Probing the Gas in the Planet Forming Regions of Protoplanetary Disks	Proposal title
observer	Dr. Nuria Calvet	Principal investigator
object	NGC 2068/2071	Source name
dtcycle	0	
cycle	P	events from which exps? Prim/Second/Both
ra_targ	86.51	Observer's specified target RA [deg]
dec_targ	-0.15	Observer's specified target Dec [deg]
ra_nom	86.513933362558	Nominal RA [deg]
dec_nom	-0.14290358753565	Nominal Dec [deg]
roll_nom	43.70869586732	Nominal Roll [deg]
revision	2	Processing version of data
ontime	19948.799925745	Sum of GTIs [s]
livetime	19696.19620936	Livetime [s]
ontime0	19948.749723196	Sum of GTIs [s]
ontime1	19948.790763199	Sum of GTIs [s]
ontime2	19948.799925745	Sum of GTIs [s]
ontime3	19948.799925745	Sum of GTIs [s]
ontime6	19945.558905542	Sum of GTIs [s]
ontime7	19948.799925745	Sum of GTIs [s]
l2events	218657	Number of level 2 events



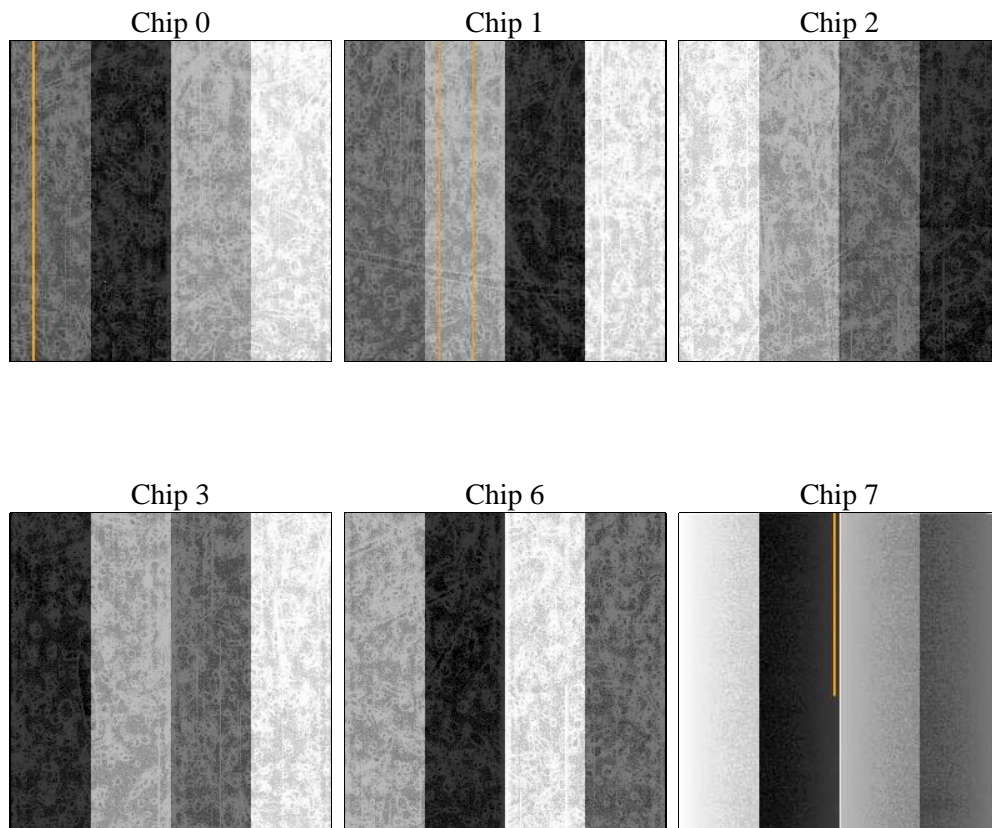
2 OBI

2.1 OBI

2.1.1 Images



2.1.2 Bias



2.1.3 Parameters

obi_num	0	Obi number	sched_exp_time	20000.000000	[s] Scheduled observation exposure time
ascdsver	8.4.4	Processing system revision	ontime	19948.799925745	Sum of GTIs [s]
caldbver	4.4.9	 	ontime0	19948.749723196	Sum of GTIs [s]
date	2012-05-24T16:36:37	Date and time of file creation	ontime1	19948.790763199	Sum of GTIs [s]
revision	2	Processing version of data	ontime2	19948.799925745	Sum of GTIs [s]
			ontime3	19948.799925745	Sum of GTIs [s]
			ontime6	19945.558905542	Sum of GTIs [s]
			ontime7	19948.799925745	Sum of GTIs [s]
			l1events	1230581	Number of level 1 events

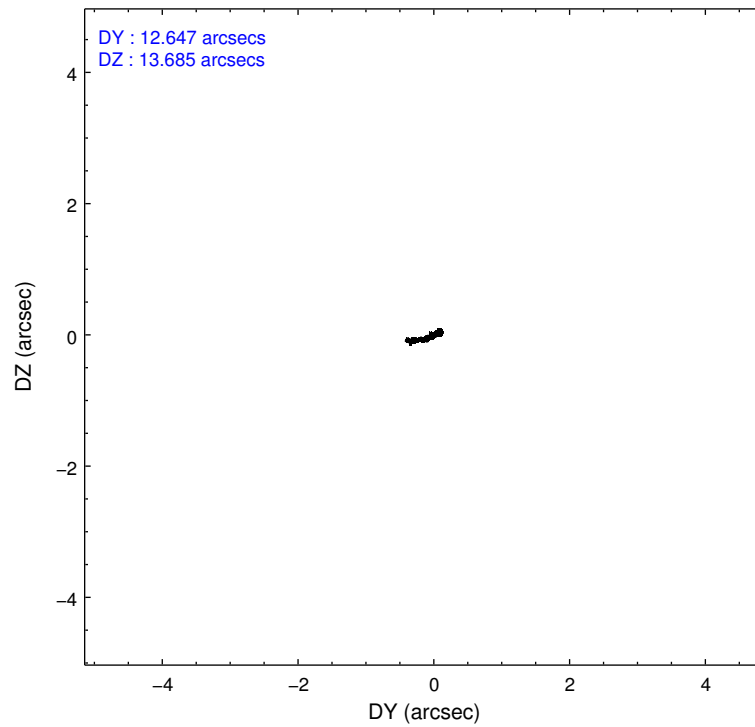
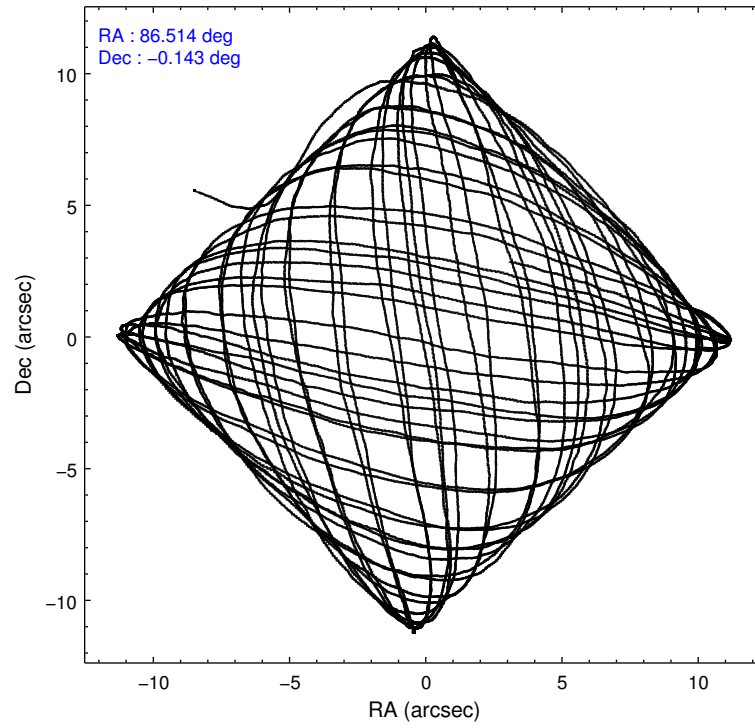
2.1.4 Events

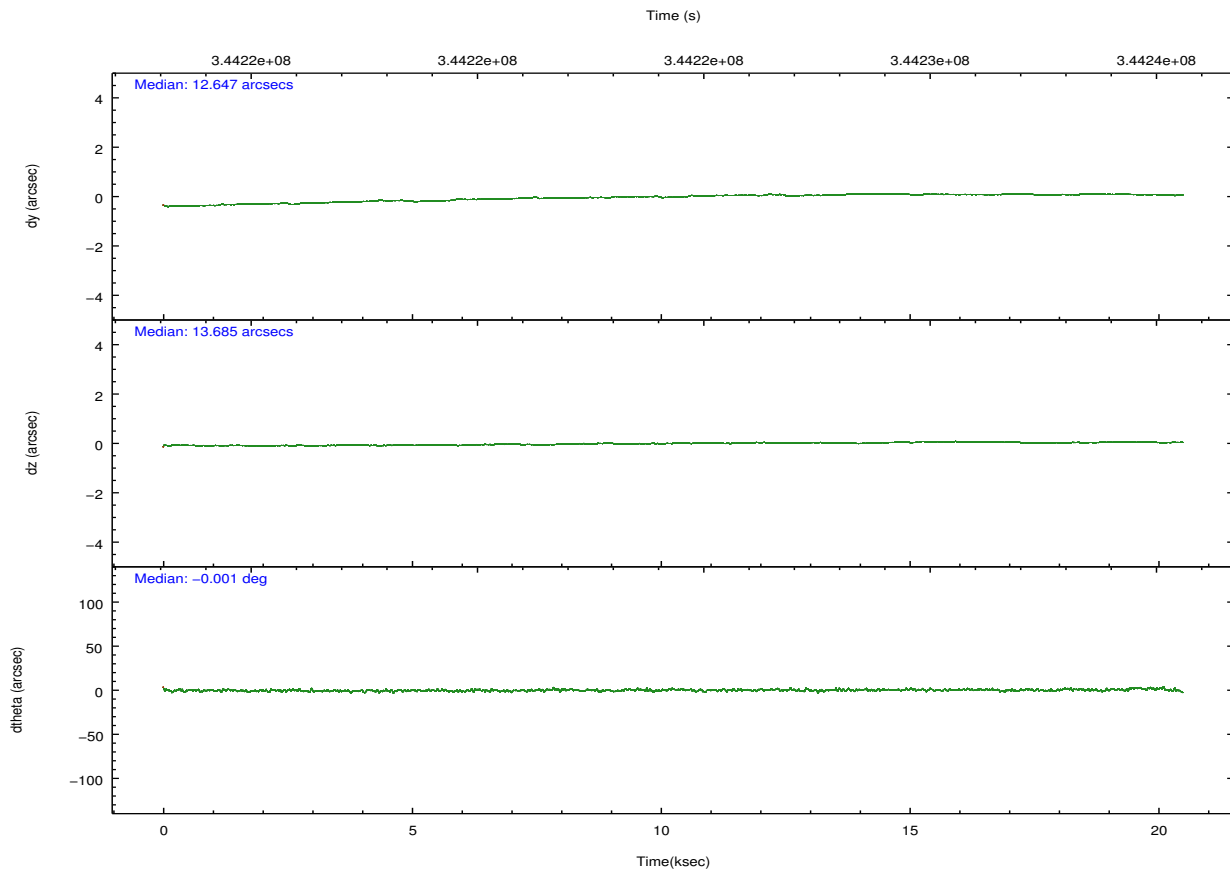
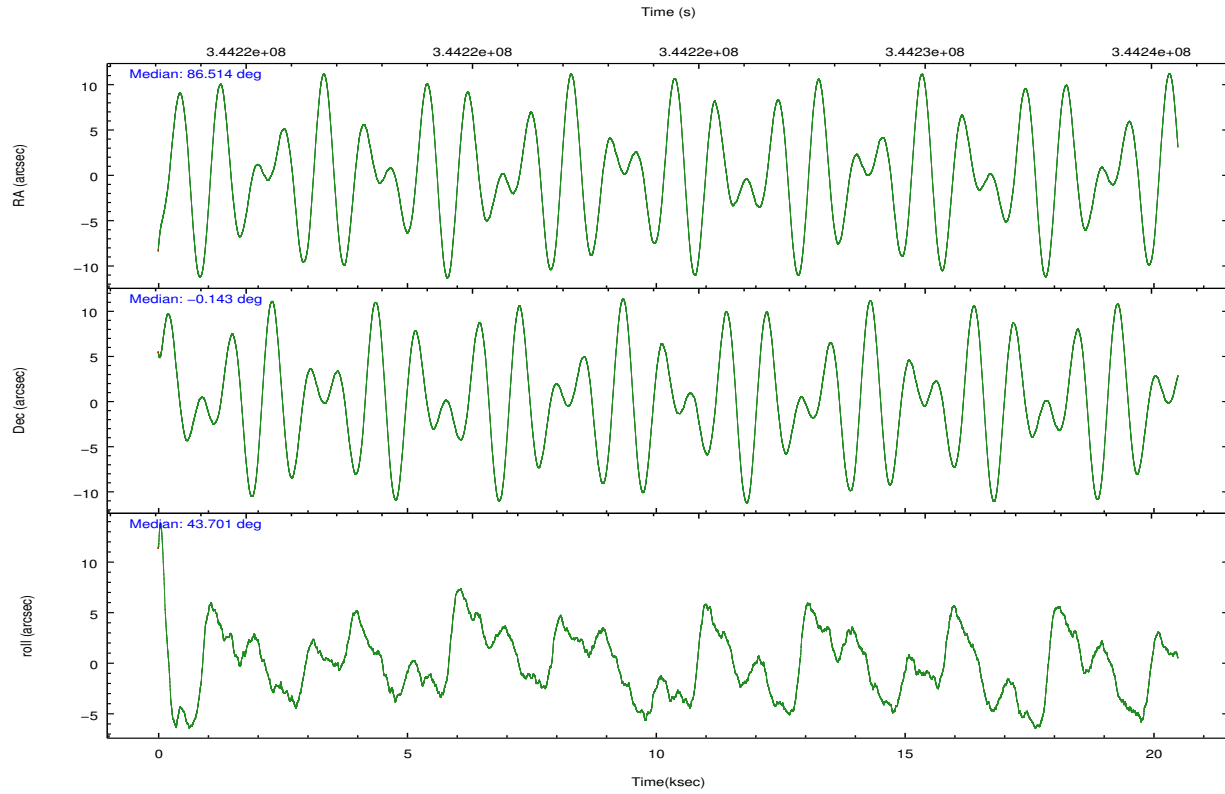
	ccd 0	ccd 1	ccd 2	ccd 3	ccd 6	ccd 7		ccd 0	ccd 1	ccd 2	ccd 3	ccd 6	ccd 7
level 1 events	177666	183988	194706	194989	201859	277373	grade 0 events	10151	10337	10536	10538	9142	9629
rejected events	153332	157572	170789	170899	177592	162697		5%	5%	5%	5%	4%	3%
rejected %	86%	85%	87%	87%	87%	58%	grade 1 events	100	149	122	129	117	331
								0%	0%	0%	0%	0%	0%
							grade 2 events	5484	6144	5109	4838	5438	23357
								3%	3%	2%	2%	2%	8%
							grade 3 events	2293	2417	2241	2237	2214	9730
								1%	1%	1%	1%	1%	3%
							grade 4 events	2085	2447	2133	2272	2230	9571
								1%	1%	1%	1%	1%	3%
							grade 5 events	8167	8969	8082	9529	9658	26031
								4%	4%	4%	4%	4%	9%
							grade 6 events	4331	5078	3903	4208	5247	62438
								2%	2%	2%	2%	2%	22%
							grade 7 events	145055	148447	162580	161238	167813	136286
								81%	80%	83%	82%	83%	49%

2.2 Compared Parameters

Parameter	Planned	Actual	Parameter	Planned	Actual
Instrument	ACIS	ACIS	Obspar format version number	7	7
Detector	ACIS-012367	ACIS-012367	Obspar file type	PREDICTED	ACTUAL
Grating	NONE	NONE	Obspar update status	NONE	UPDATED
Data mode	FAINT	FAINT	Number of optional ACIS chips dropped	0	0
Observation mode	POINTING	POINTING	On-chip summing requested	N	N
[deg] Pointing RA	86.506313	86.51393336255768	Subarray requested	NONE	NONE
[deg] Pointing Dec	-0.169362	-0.1429035875356504	Alternating exposures requested	N	N
[deg] Pointing Roll	43.499990	43.70869586732037	[s] Primary exposure time	0.000000	3.2
[mm] SIM focus pos	-0.782348	-0.7809083437167272			
[mm] SIM defocus	0	0.001439871863259334			
[mm] SIM translation stage pos	-233.592463	-233.5874344608287			
[mm] SIM translation stage offset	0	-0.005018542100998502			
[s] Observation start time (MET)	344214562.184000	344213449.80225			
Observation start date	2008-11-27T23:08:17	2008-11-27T22:50:49			
[s] Observation end time (MET)	344234562.184000	344236076.67837			
Observation end date	2008-11-28T04:41:37	2008-11-28T05:07:56			
Read mode	TIMED	TIMED			

2.3 Aspect



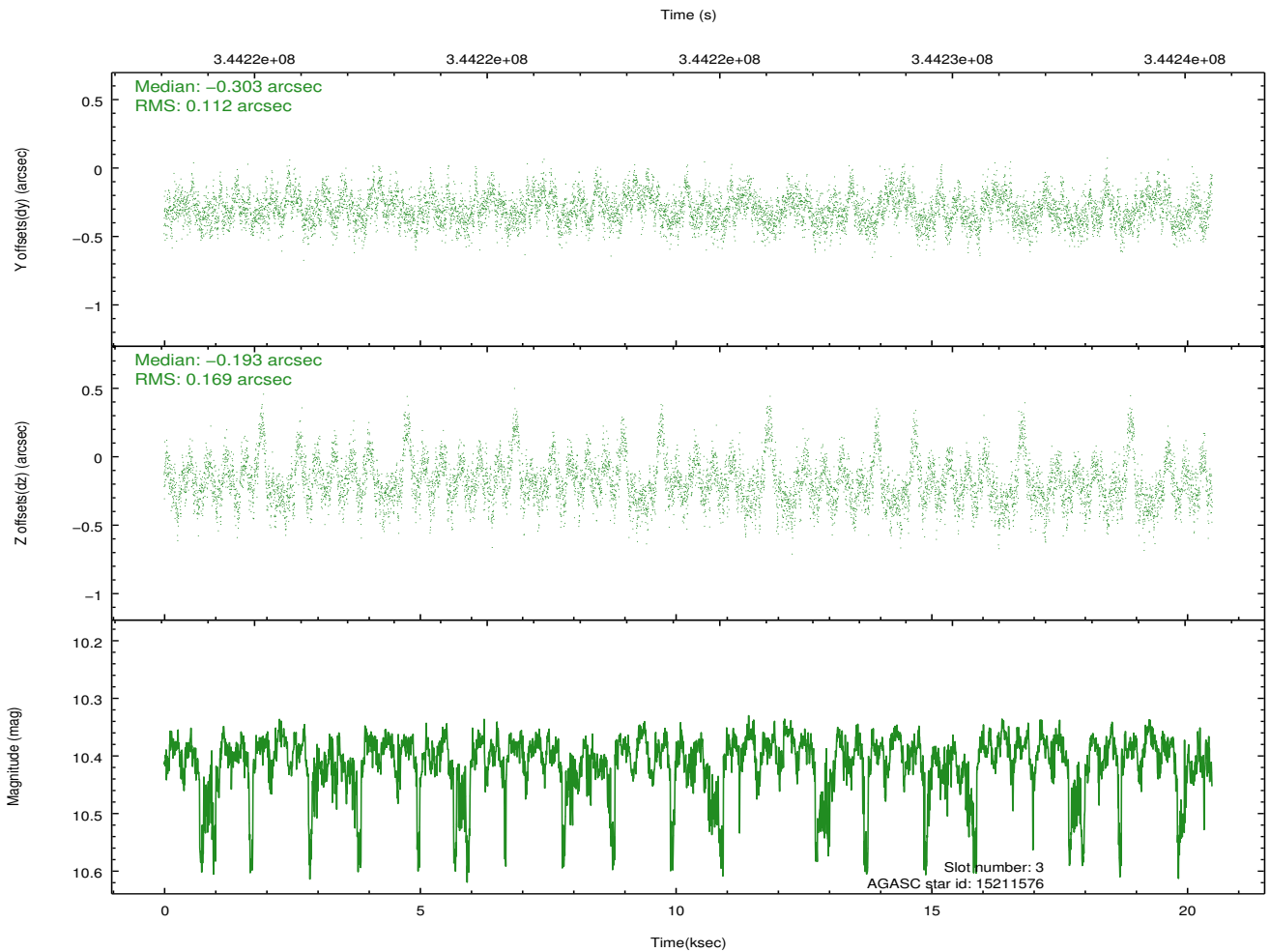
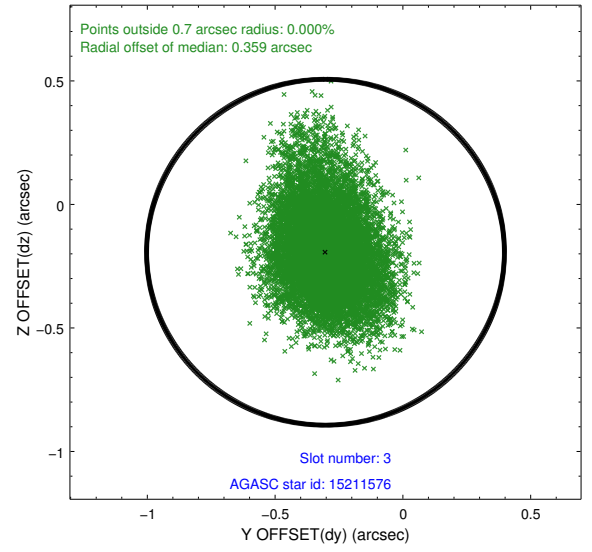
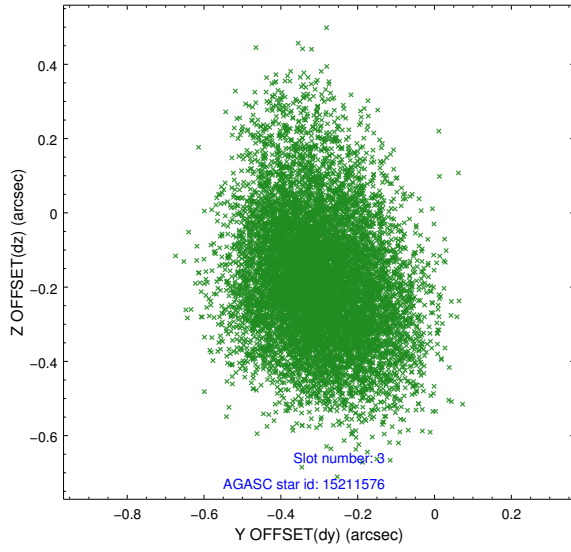


Slot Statistics

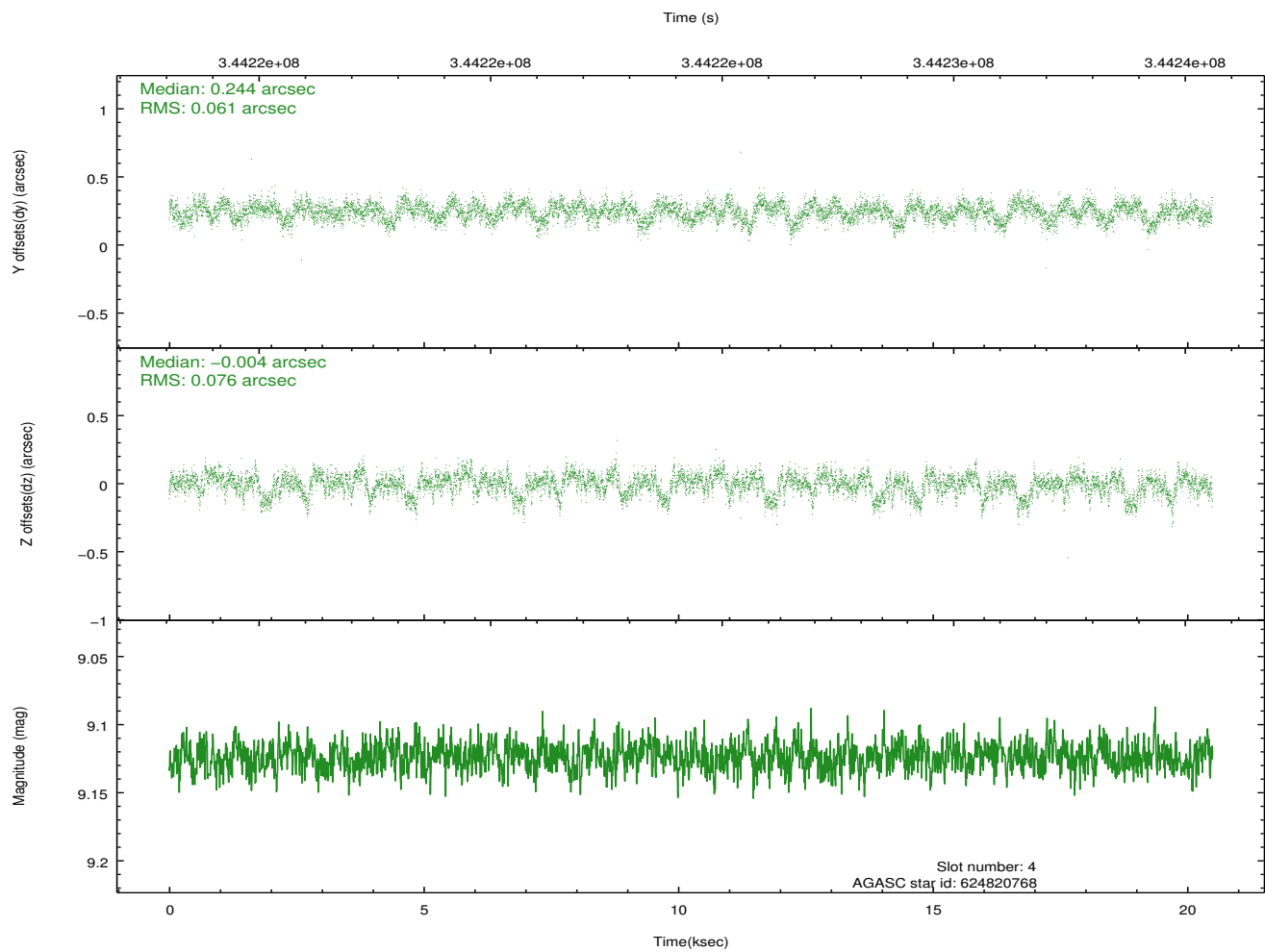
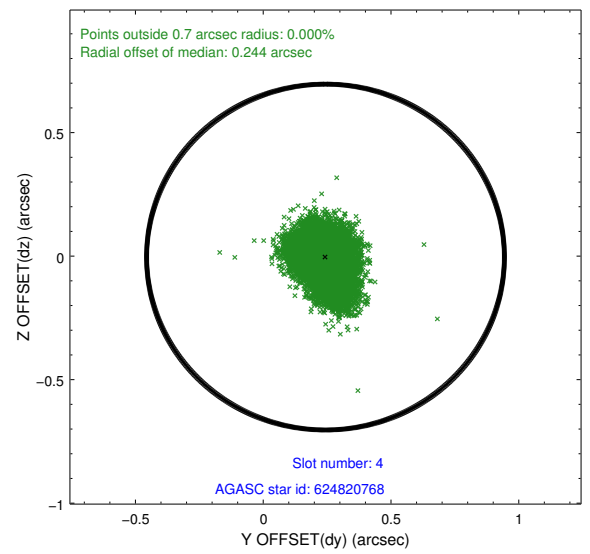
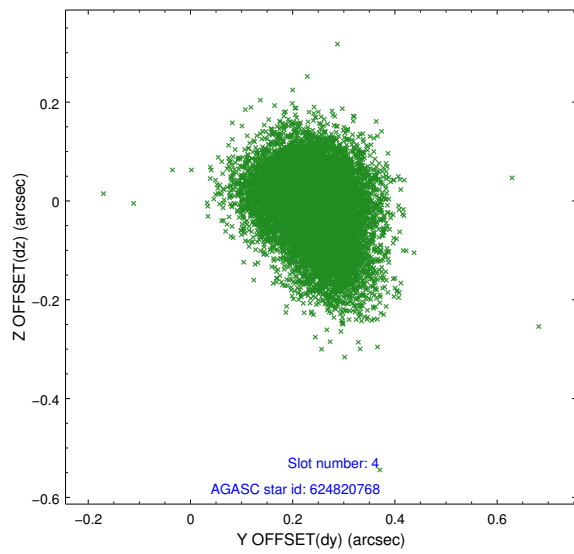
slot	status	id	mag	n_pts	med_dy	med_dz	dr1	dr2	ra	dec	mean_y	mean_z
0	FID	ACIS-I-1	7.05	4999	-0.057	0.075	0.010	0.017	0.000000	0.000000	926.86	-837.17
1	FID	ACIS-I-2	6.96	4998	-0.158	-0.100	0.008	0.015	0.000000	0.000000	-767.23	-843.85
2	FID	ACIS-I-4	6.97	4998	0.117	0.092	0.010	0.019	0.000000	0.000000	2146.87	1062.53
3	GUIDE	15211576	10.40	9968	-0.303	-0.193	0.210	0.364	86.250116	0.372772	674.07	2050.71
4	GUIDE	624820768	9.12	9987	0.244	-0.004	0.102	0.170	86.202480	-0.061953	-526.88	1033.74
5	GUIDE	624954088	9.59	9982	0.213	0.068	0.135	0.216	86.606399	-0.671650	-982.79	-1559.43
6	GUIDE	624954400	9.14	9991	-0.019	0.237	0.130	0.212	86.607838	-0.762568	-1204.60	-1800.53
7	GUIDE	624954504	9.63	9977	-0.131	-0.110	0.127	0.212	86.731350	-0.894009	-1207.90	-2450.18

2.4 Star Slots

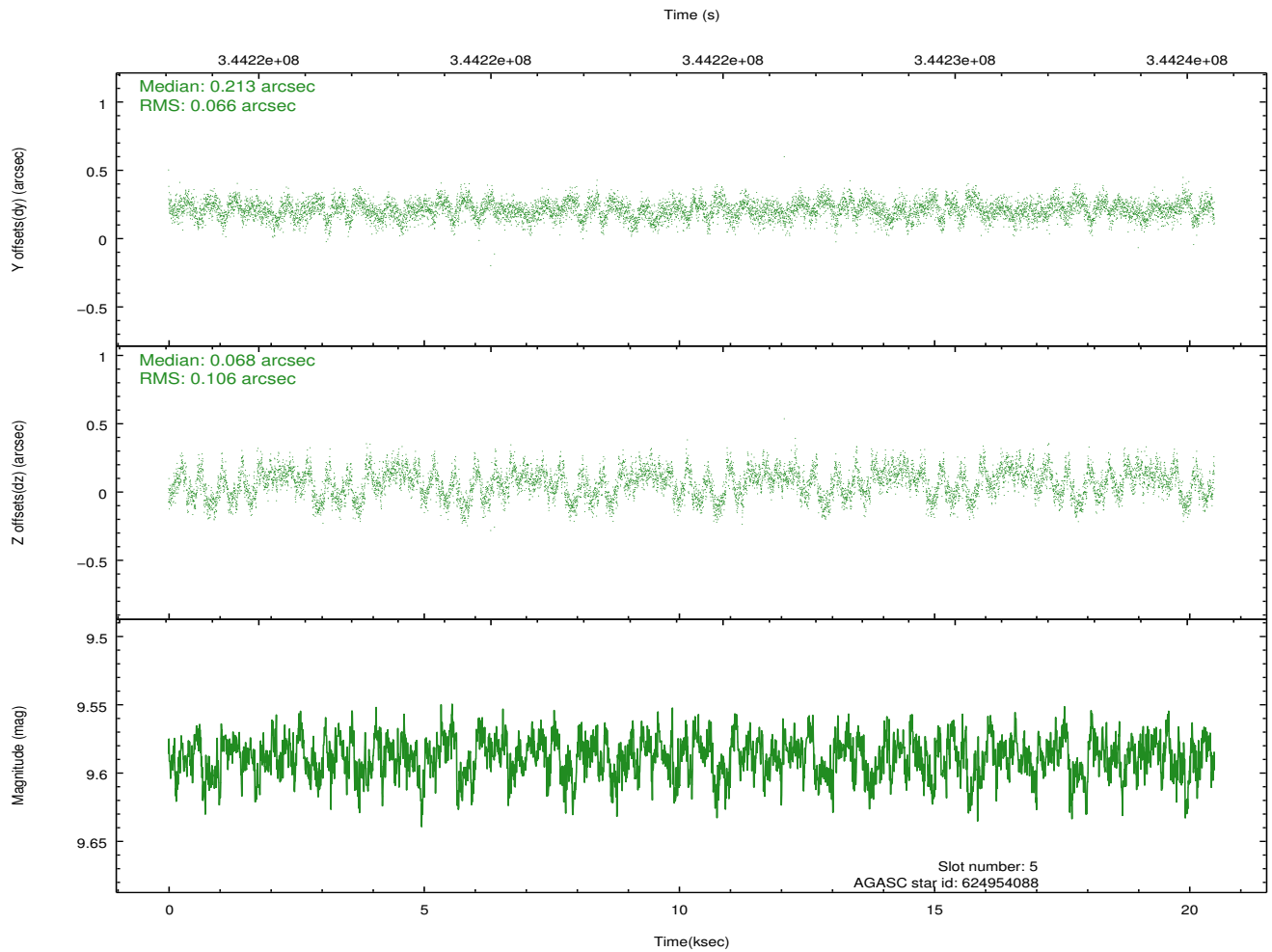
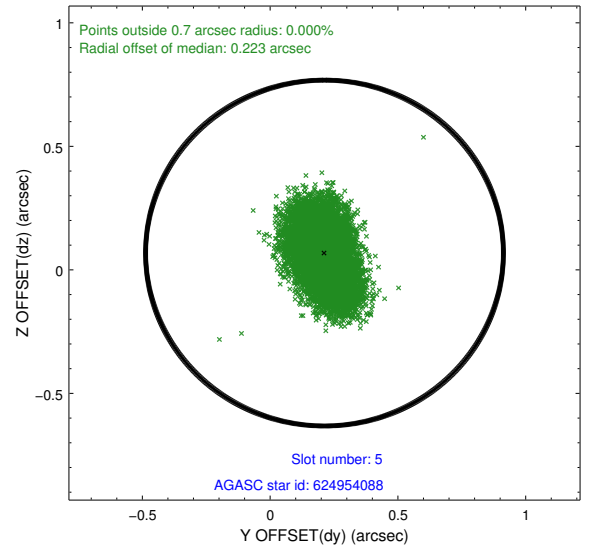
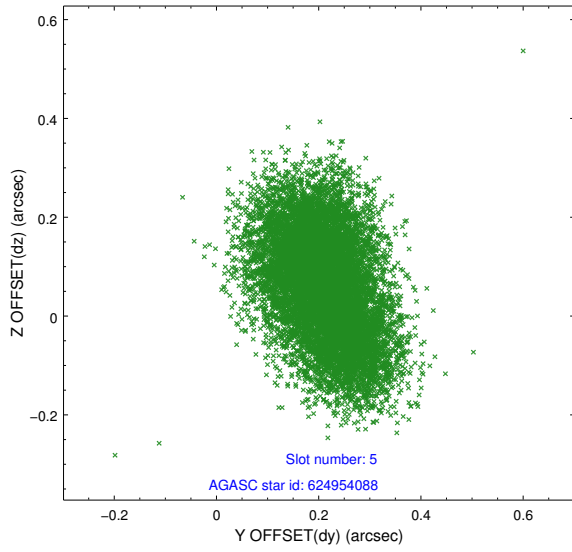
2.4.1 Slot 3



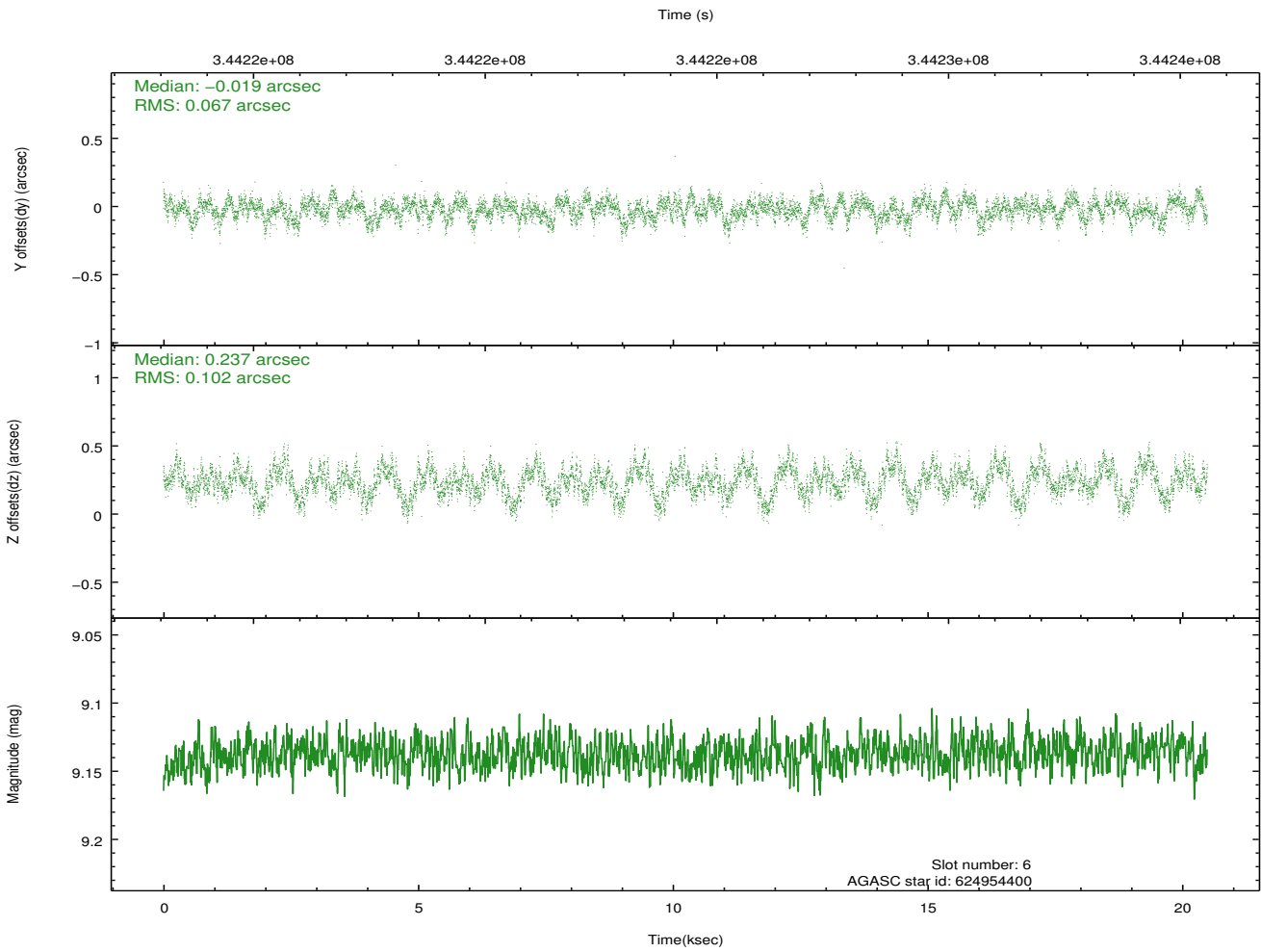
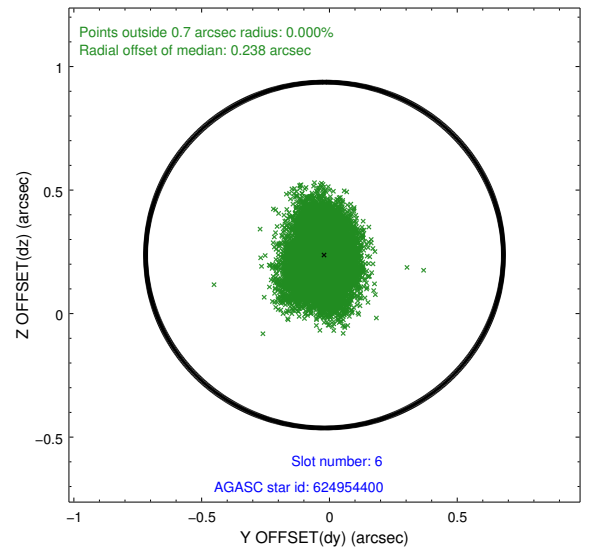
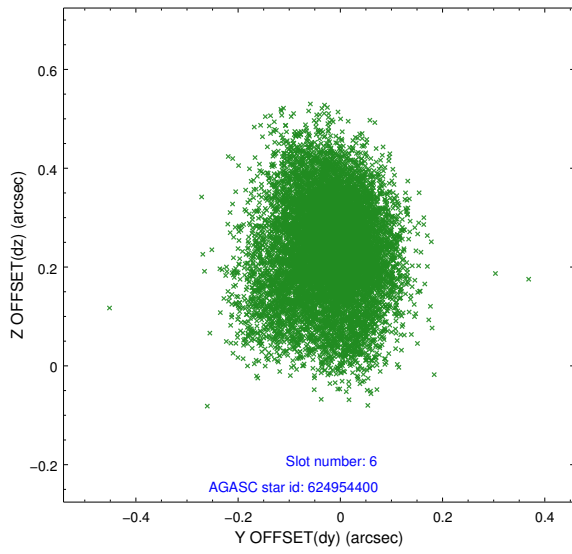
2.4.2 Slot 4



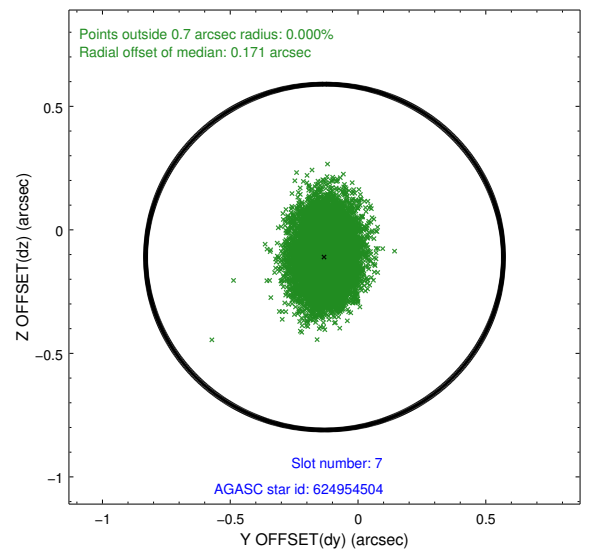
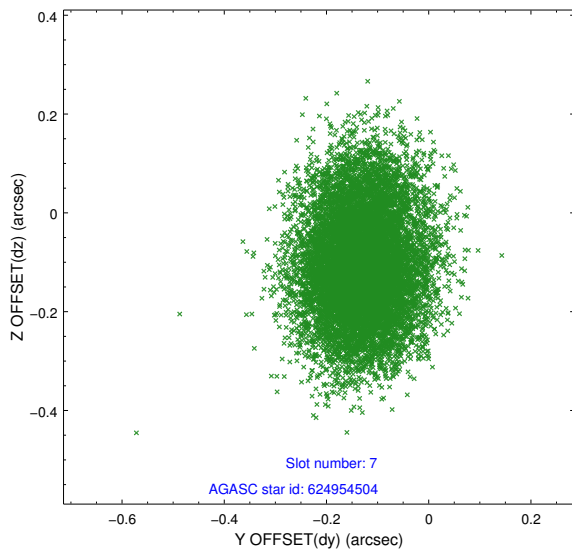
2.4.3 Slot 5



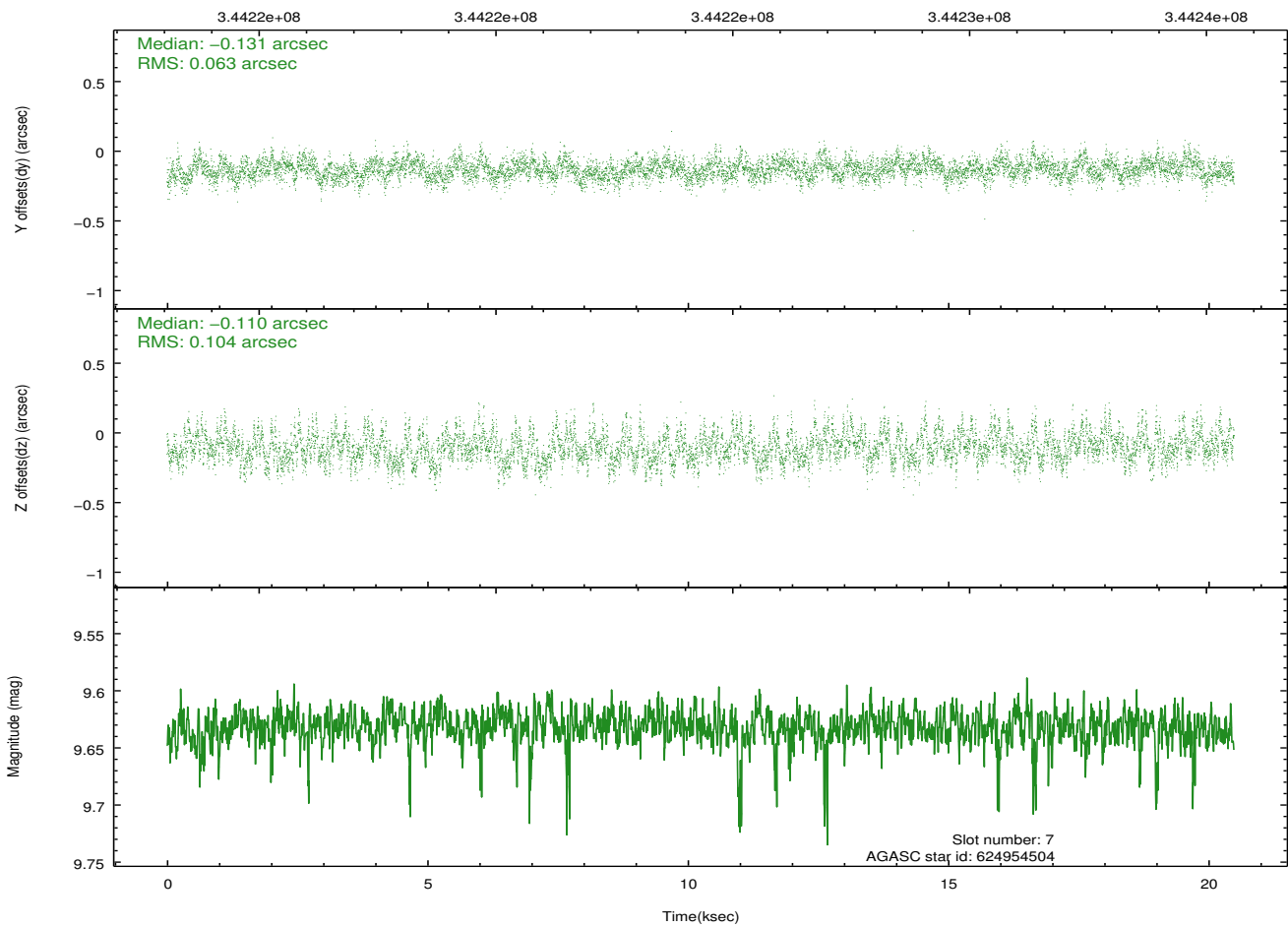
2.4.4 Slot 6



2.4.5 Slot 7

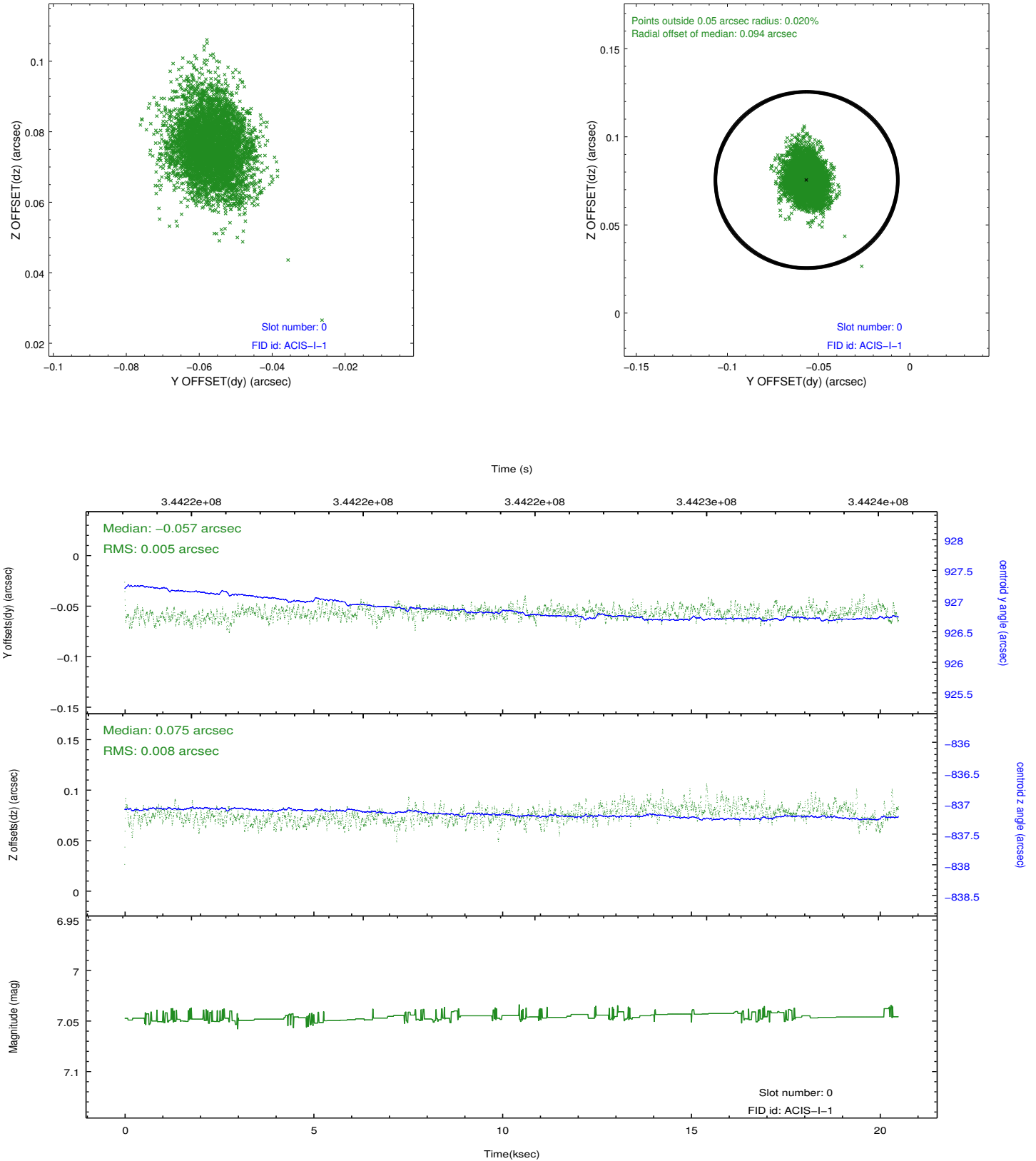


Time (s)

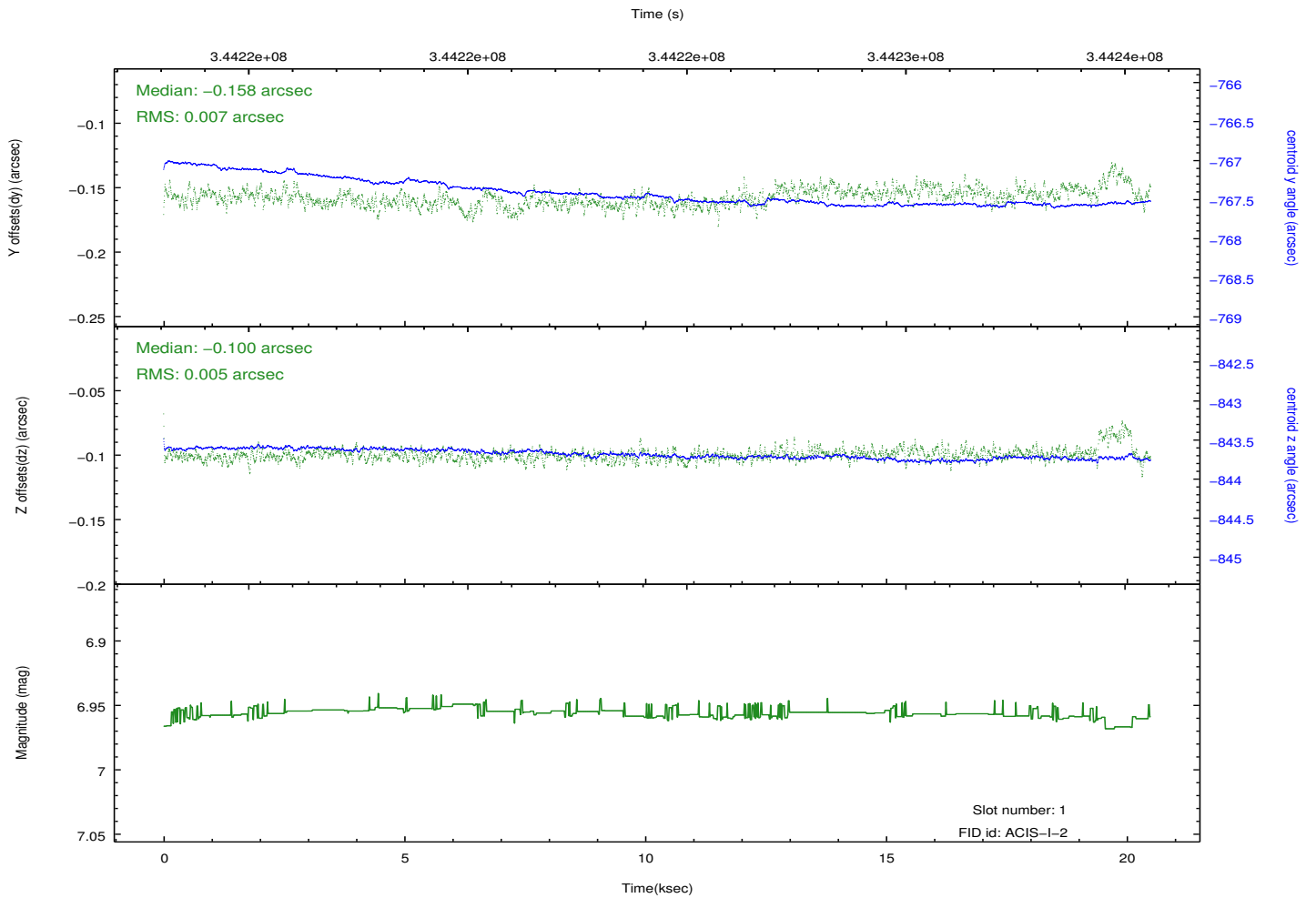
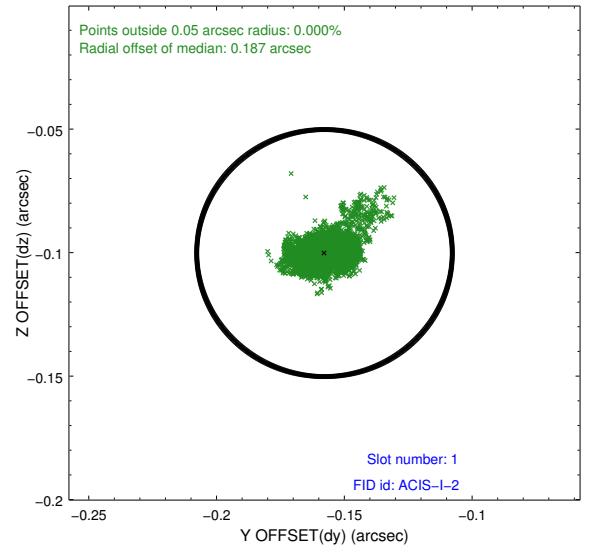
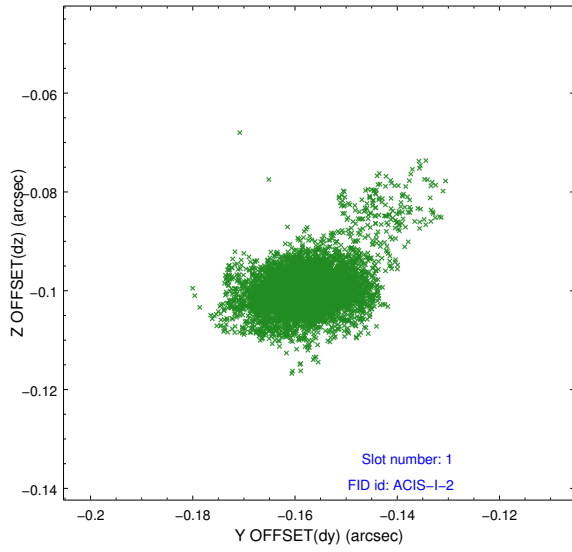


2.5 FID Slots

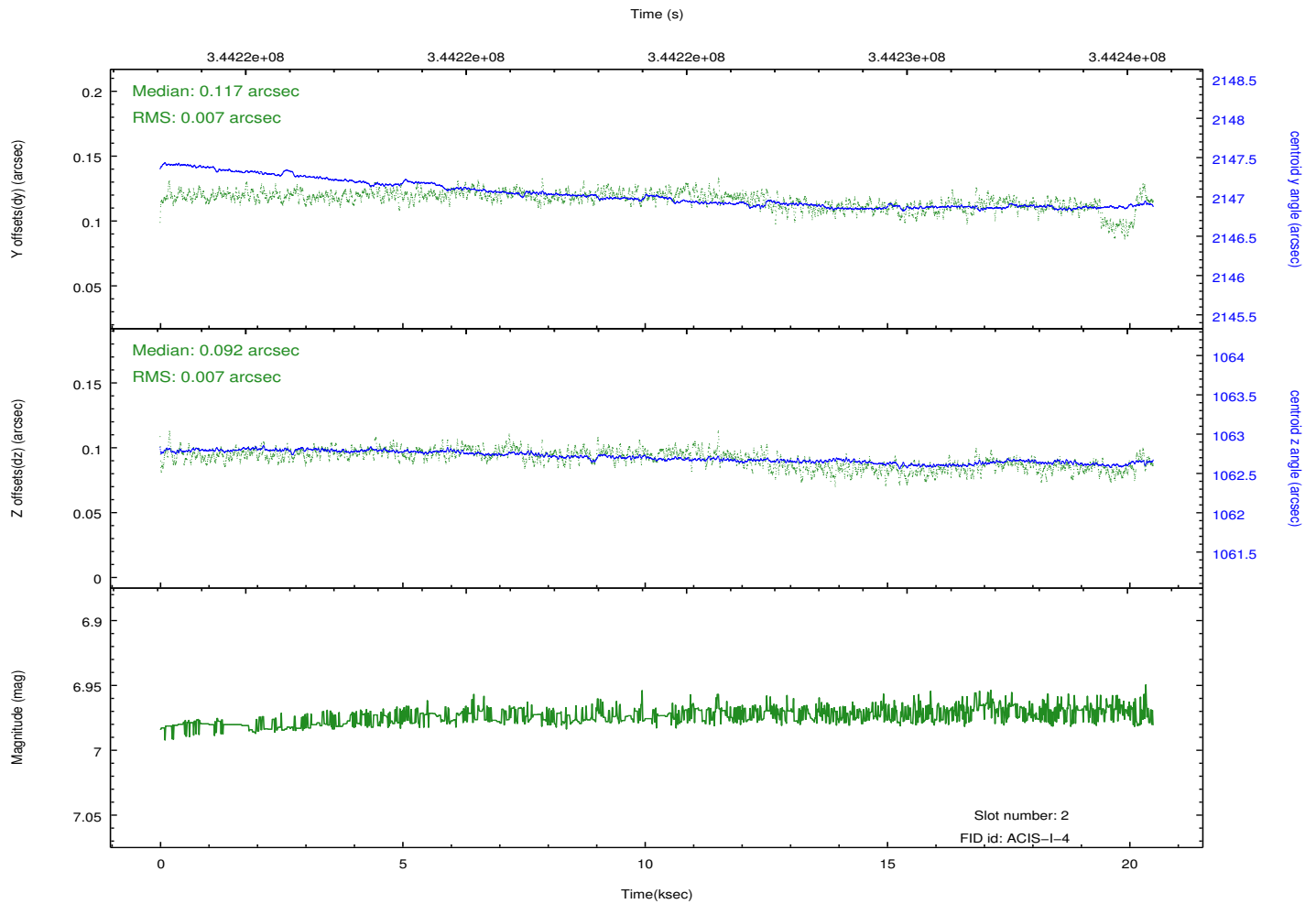
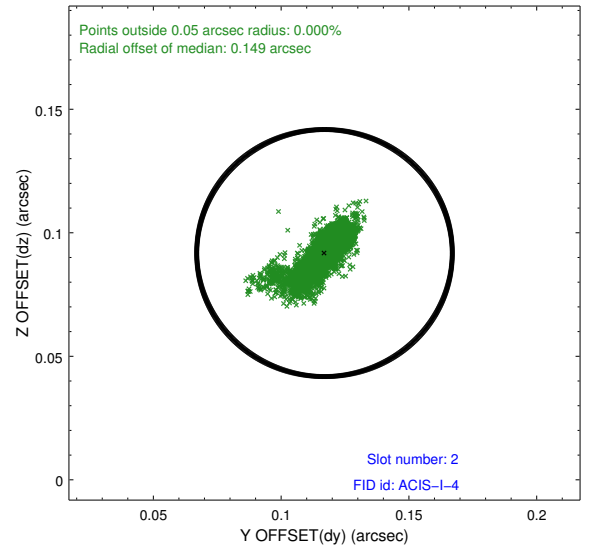
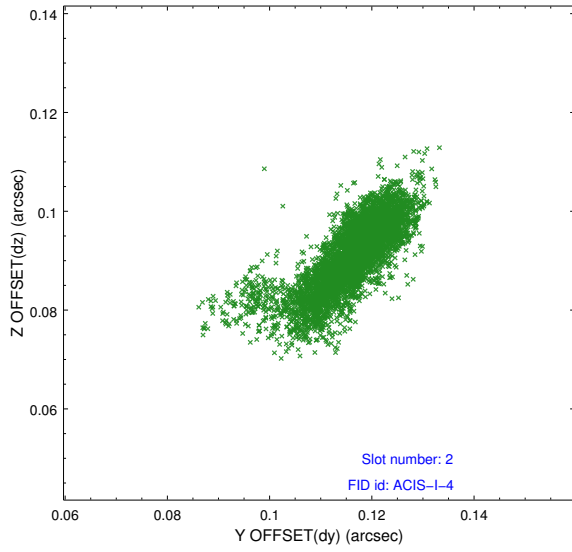
2.5.1 Slot 0



2.5.2 Slot 1



2.5.3 Slot 2



A Summary

A.1 Status

V&V Scientist	Jen Lauer
V&V Date (YYYY-MM-DD)	2012.05.31
V&V Edition	1
V&V Disposition and Status	OK
V&V Charge Time	19.9487999

A.2 Comments

Joint Proposal: CX0-Spitzer