

V&V Reference Report

L2 ASCDS Version : 8.4.5

Observation 10933 - L2 Version 2
Chandra X-Ray Center

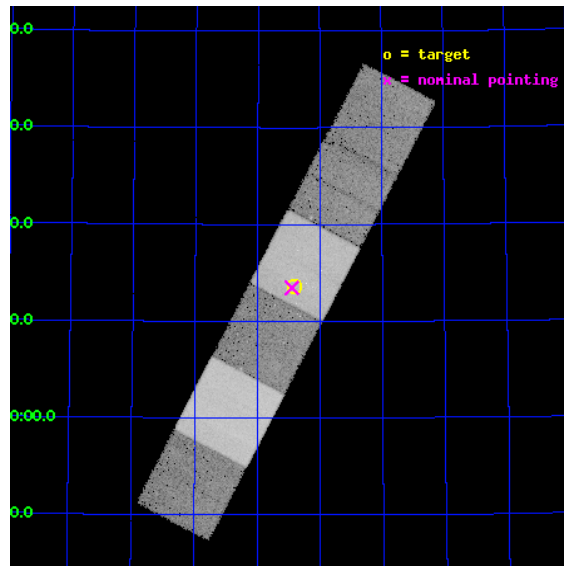
L2 Processing Date : Jun 11 2012

Contents

1	Front	2
2	OBI	3
2.1	OBI	3
2.1.1	Images	3
2.1.2	Bias	3
2.1.3	Parameters	4
2.1.4	Events	4
2.2	Compared Parameters	5
2.3	Aspect	6
2.4	Star Slots	9
2.4.1	Slot 3	9
2.4.2	Slot 4	10
2.4.3	Slot 5	11
2.4.4	Slot 6	12
2.4.5	Slot 7	13
2.5	FID Slots	14
2.5.1	Slot 0	14
2.5.2	Slot 1	15
2.5.3	Slot 2	16
A	Summary	17
A.1	Status	17
A.2	Comments	17

1 Front

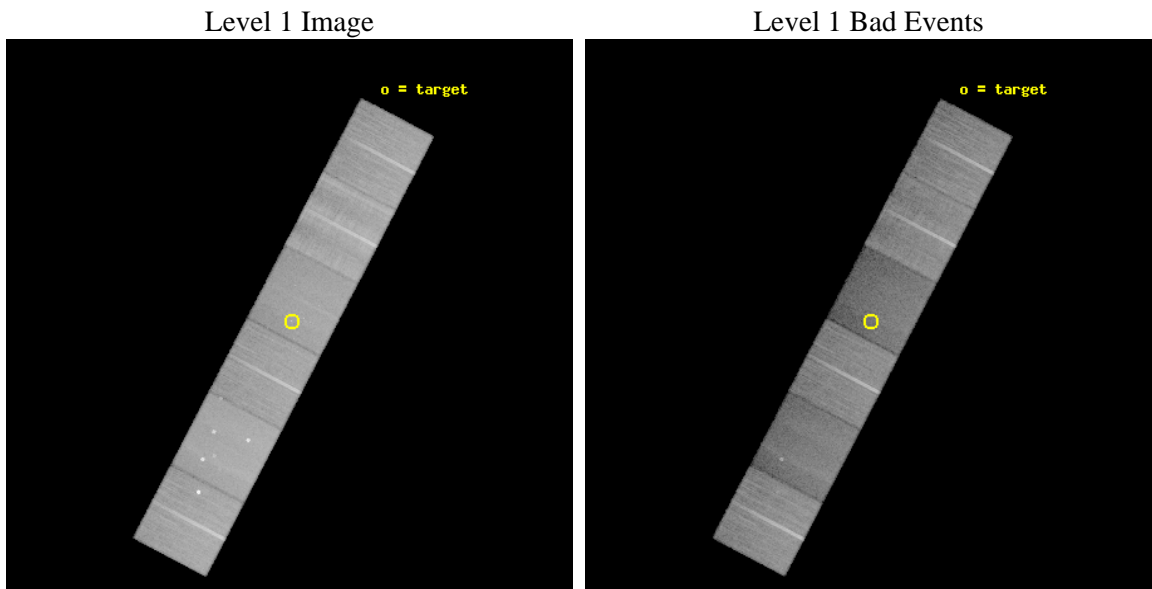
seq_num	701925	Sequence number
obs_id	10933	Observation id
title	The Circumnuclear X-Ray Environments of CSS Radio Sources	Proposal
observer	Dr Daniel Evans	Principal investigator
object	3C 268.3	Source name
dtcycle	0	
cycle	P	events from which exps? Prim/Second/Both
ra_targ	181.602917	Observer's specified target RA [deg]
dec_targ	64.226917	Observer's specified target Dec [deg]
ra_nom	181.61250881145	Nominal RA [deg]
dec_nom	64.224446659519	Nominal Dec [deg]
roll_nom	297.64799182334	Nominal Roll [deg]
revision	2	Processing version of data
ontime	29558.399889946	Sum of GTIs [s]
livetime	29184.113632608	Livetime [s]
ontime4	29558.399889946	Sum of GTIs [s]
ontime5	29558.399889946	Sum of GTIs [s]
ontime6	29551.917929411	Sum of GTIs [s]
ontime7	29558.399889946	Sum of GTIs [s]
ontime8	29558.399889946	Sum of GTIs [s]
ontime9	29558.399889946	Sum of GTIs [s]
l2events	349406	Number of level 2 events



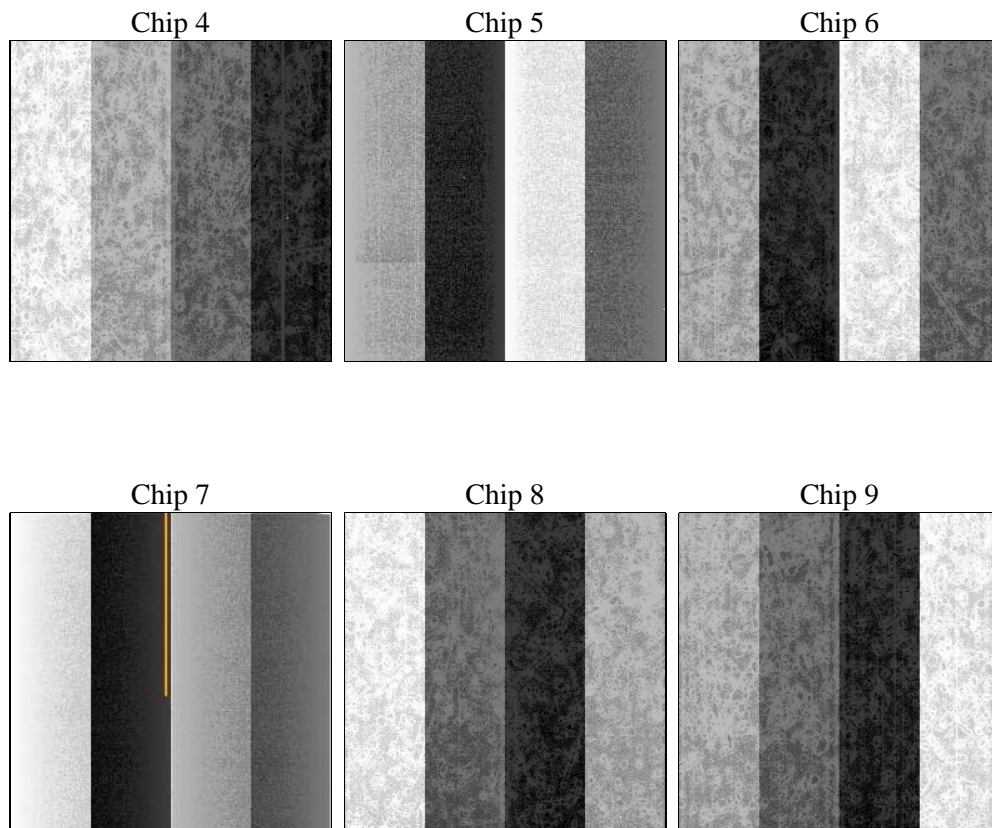
2 OBI

2.1 OBI

2.1.1 Images



2.1.2 Bias



2.1.3 Parameters

obi_num	0	Obi number	sched_exp_time	29700.000000	[s] Scheduled observation exposure time
ascdsver	8.4.5	Processing system revision	ontime	29558.399889946	Sum of GTIs [s]
caldsver	4.4.10	 	ontime4	29558.399889946	Sum of GTIs [s]
date	2012-06-11T02:20:19	Date and time of file creation	ontime5	29558.399889946	Sum of GTIs [s]
revision	2	Processing version of data	ontime6	29551.917929411	Sum of GTIs [s]
			ontime7	29558.399889946	Sum of GTIs [s]
			ontime8	29558.399889946	Sum of GTIs [s]
			ontime9	29558.399889946	Sum of GTIs [s]
			l1events	1632318	Number of level 1 events

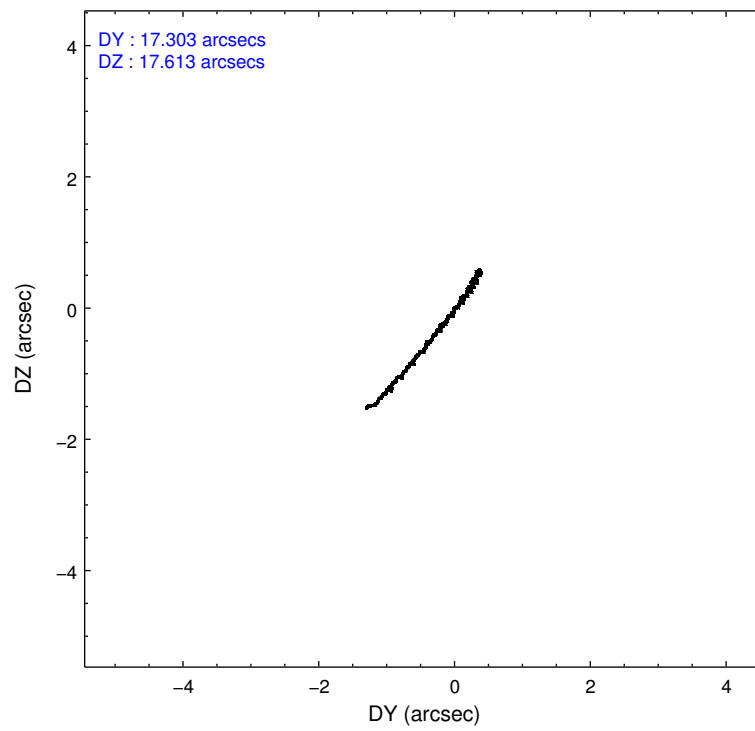
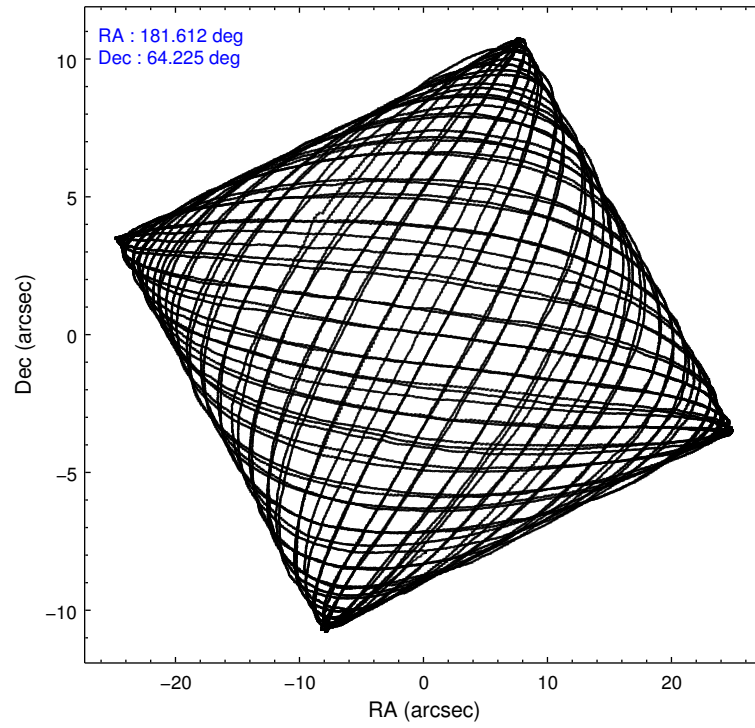
2.1.4 Events

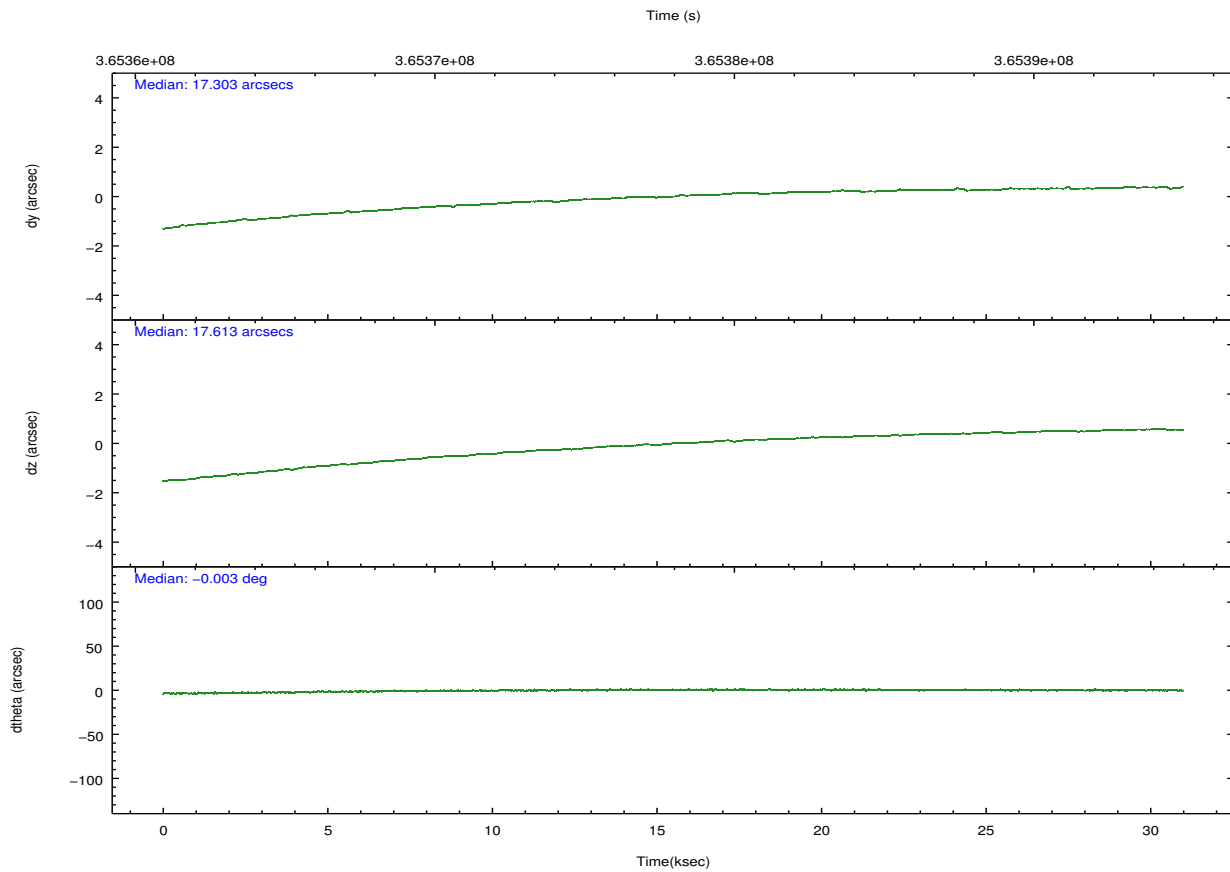
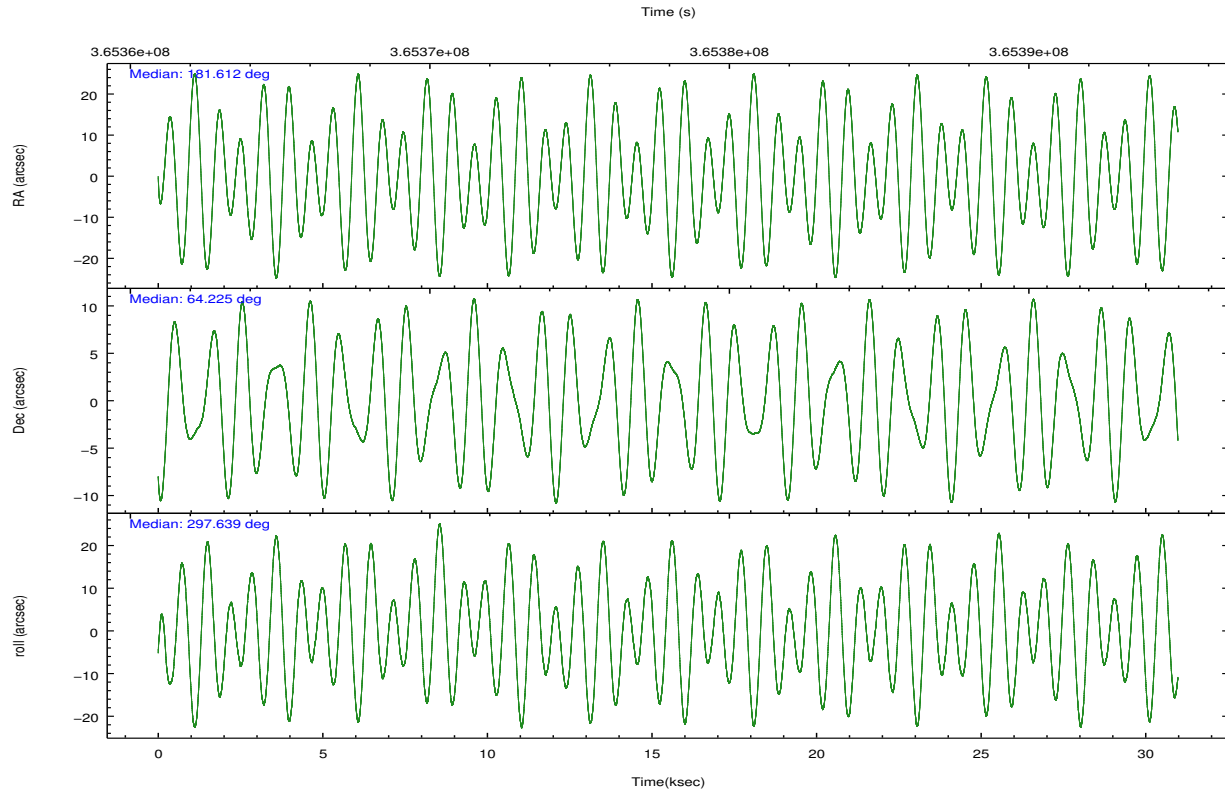
	ccd 4	ccd 5	ccd 6	ccd 7	ccd 8	ccd 9		ccd 4	ccd 5	ccd 6	ccd 7	ccd 8	ccd 9
level 1 events	292073	312970	247221	234784	304857	240413	grade 0 events	17672	18726	9140	11960	22075	8615
rejected events	257974	146339	222371	119172	225972	215844		6%	5%	3%	5%	7%	3%
rejected %	88%	46%	89%	50%	74%	89%	grade 1 events	367	769	134	351	273	154
								0%	0%	0%	0%	0%	0%
							grade 2 events	6741	51838	5679	24783	18493	5470
								2%	16%	2%	10%	6%	2%
							grade 3 events	2866	7084	2608	10831	8926	2772
								0%	2%	1%	4%	2%	1%
							grade 4 events	2606	6867	2525	10528	8267	2610
								0%	2%	1%	4%	2%	1%
							grade 5 events	8542	24823	8465	25237	12984	9434
								2%	7%	3%	10%	4%	3%
							grade 6 events	4216	82128	4899	57525	21144	5106
								1%	26%	1%	24%	6%	2%
							grade 7 events	249063	120735	213771	93569	212695	206252
								85%	38%	86%	39%	69%	85%

2.2 Compared Parameters

Parameter	Planned	Actual	Parameter	Planned	Actual
Instrument	ACIS	ACIS	Obspar format version number	7	7
Detector	ACIS-456789	ACIS-456789	Obspar file type	PREDICTED	ACTUAL
Grating	NONE	NONE	Obspar update status	NONE	UPDATED
Data mode	VFAINT	VFAINT	CCD I0 on	N	N
Observation mode	POINTING	POINTING	CCD I1 on	N	N
[deg] Pointing RA	181.558912	181.6125088114466	CCD I2 on	N	N
[deg] Pointing Dec	64.238756	64.2244466595189	CCD I3 on	N	N
[deg] Pointing Roll	297.539634	297.6479918233371	CCD S0 on	O1	Y
[mm] SIM focus pos	-0.684267	-0.6828225247311905	CCD S1 on	Y	Y
[mm] SIM defocus	0	0.001444936568705701	CCD S2 on	Y	Y
[mm] SIM translation stage pos	-190.132523	-190.1400660498719	CCD S3 on	Y	Y
[mm] SIM translation stage offset	0	0.00754346686406393	CCD S4 on	Y	Y
[s] Observation start time (MET)	365363562.184000	365361894.0412	CCD S5 on	O2	Y
Observation start date	2009-07-30T17:51:36	2009-07-30T17:24:54	Number of optional ACIS chips dropped	0	0
[s] Observation end time (MET)	365393262.184000	365393921.1928	On-chip summing requested	N	N
Observation end date	2009-07-31T02:06:36	2009-07-31T02:18:41	Subarray requested	NONE	NONE
Read mode	TIMED	TIMED	Alternating exposures requested	N	N
			[s] Primary exposure time	0.000000	3.2

2.3 Aspect



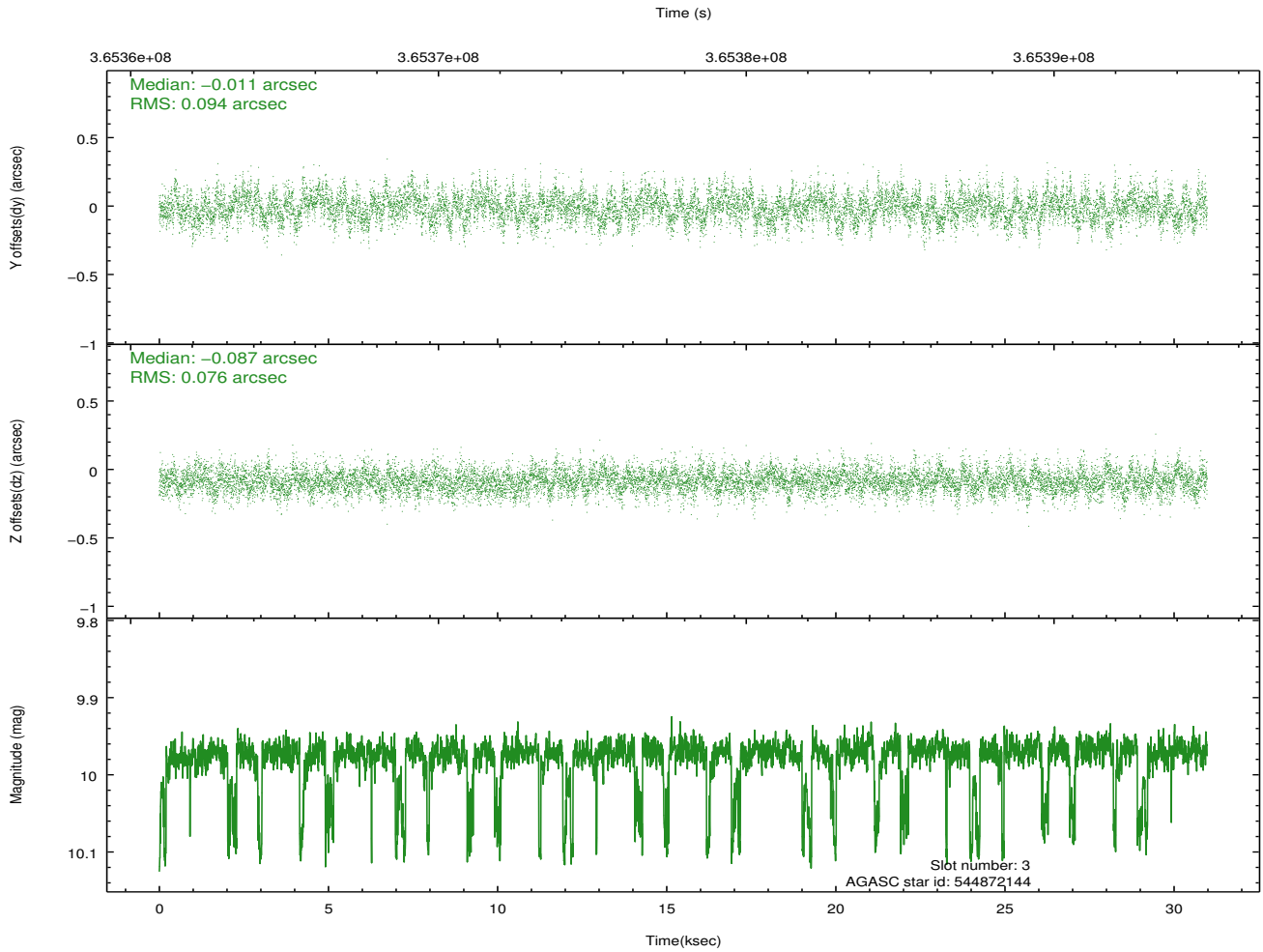
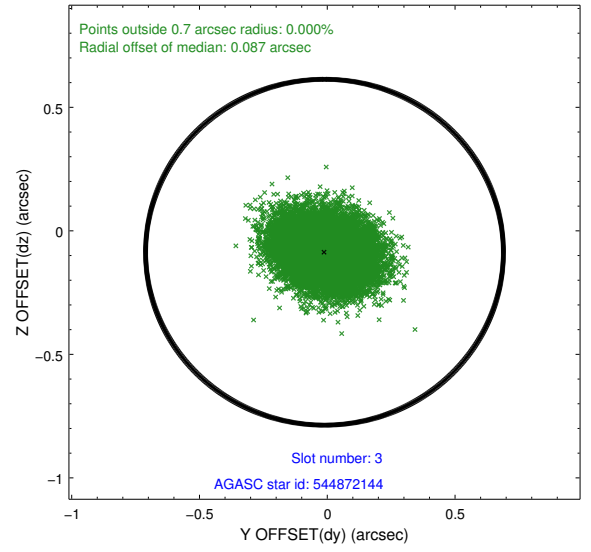
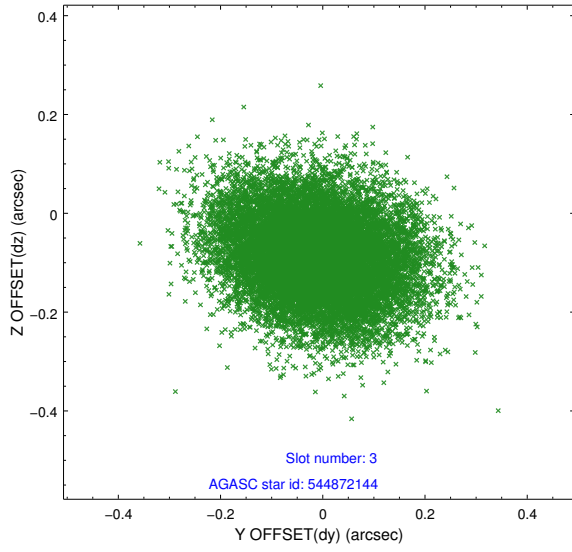


Slot Statistics

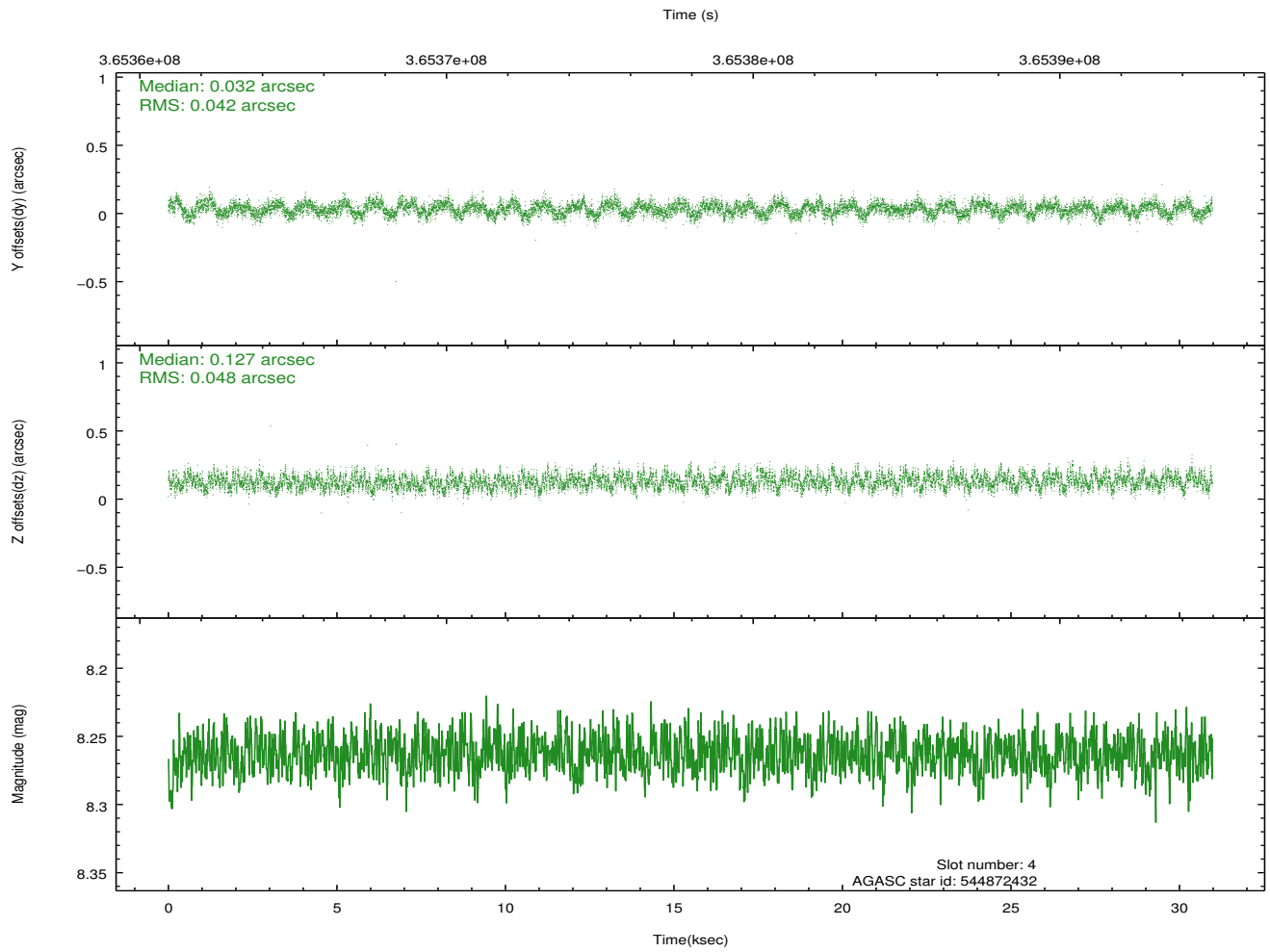
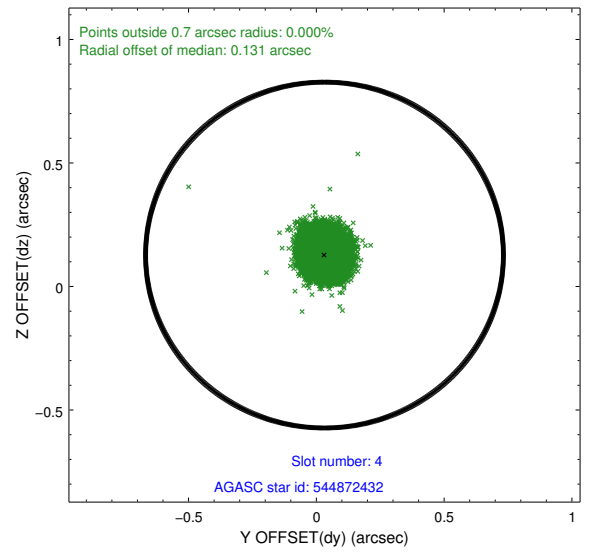
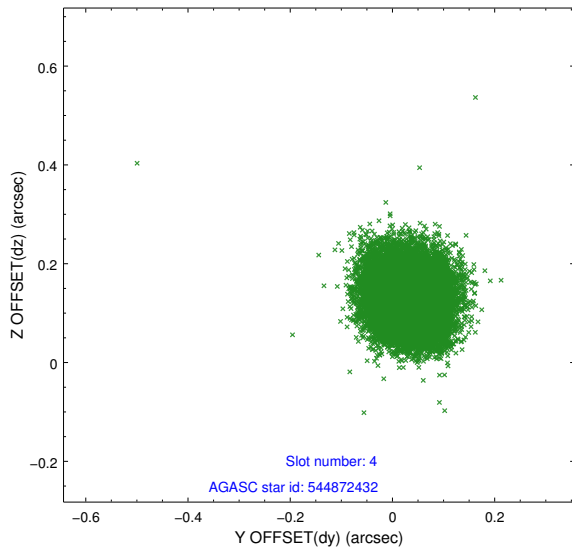
slot	status	id	mag	n_pts	med_dy	med_dz	dr1	dr2	ra	dec	mean_y	mean_z
0	FID	ACIS-S-2	6.84	7557	-0.044	-0.016	0.012	0.038	0.000000	0.000000	-770.28	-1738.89
1	FID	ACIS-S-4	6.92	7556	0.137	0.026	0.008	0.016	0.000000	0.000000	2143.19	169.51
2	FID	ACIS-S-5	6.96	7557	-0.124	-0.000	0.015	0.043	0.000000	0.000000	-1823.07	163.30
3	GUIDE	544872144	9.97	15033	-0.011	-0.087	0.129	0.211	181.066828	63.560468	1798.40	-1826.74
4	GUIDE	544872432	8.26	15101	0.032	0.127	0.068	0.108	181.070384	64.093771	105.55	-921.14
5	GUIDE	544872904	9.54	15088	-0.001	0.062	0.103	0.166	182.067557	64.803954	-1446.44	1633.34
6	GUIDE	544876008	9.01	15095	-0.070	-0.179	0.093	0.150	181.935887	64.595120	-869.90	1110.12
7	GUIDE	544999904	9.10	15080	0.051	0.080	0.097	0.154	182.961440	64.209794	1086.67	1910.99

2.4 Star Slots

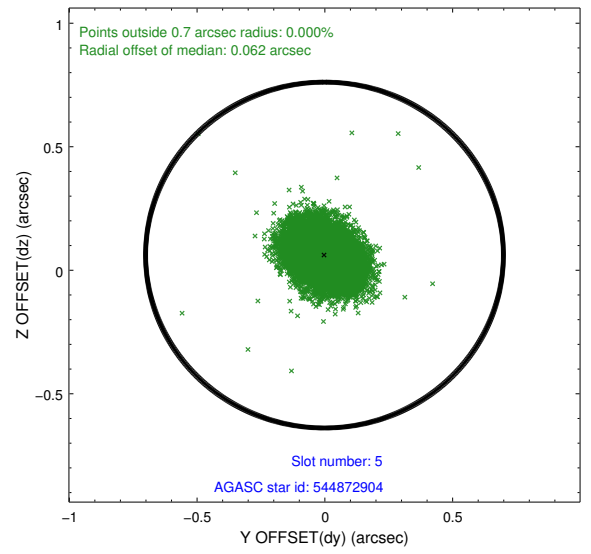
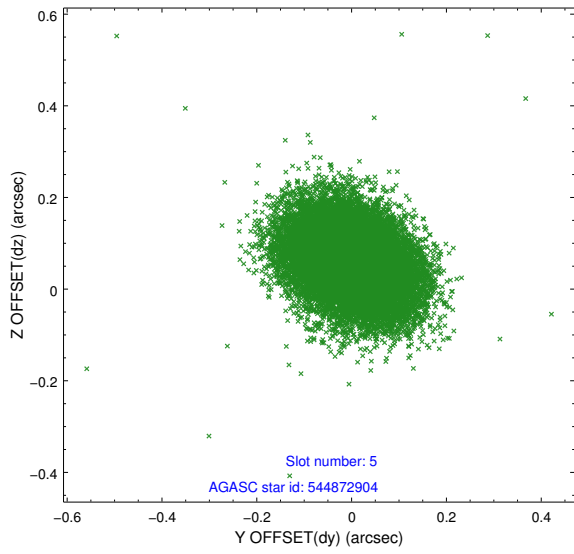
2.4.1 Slot 3



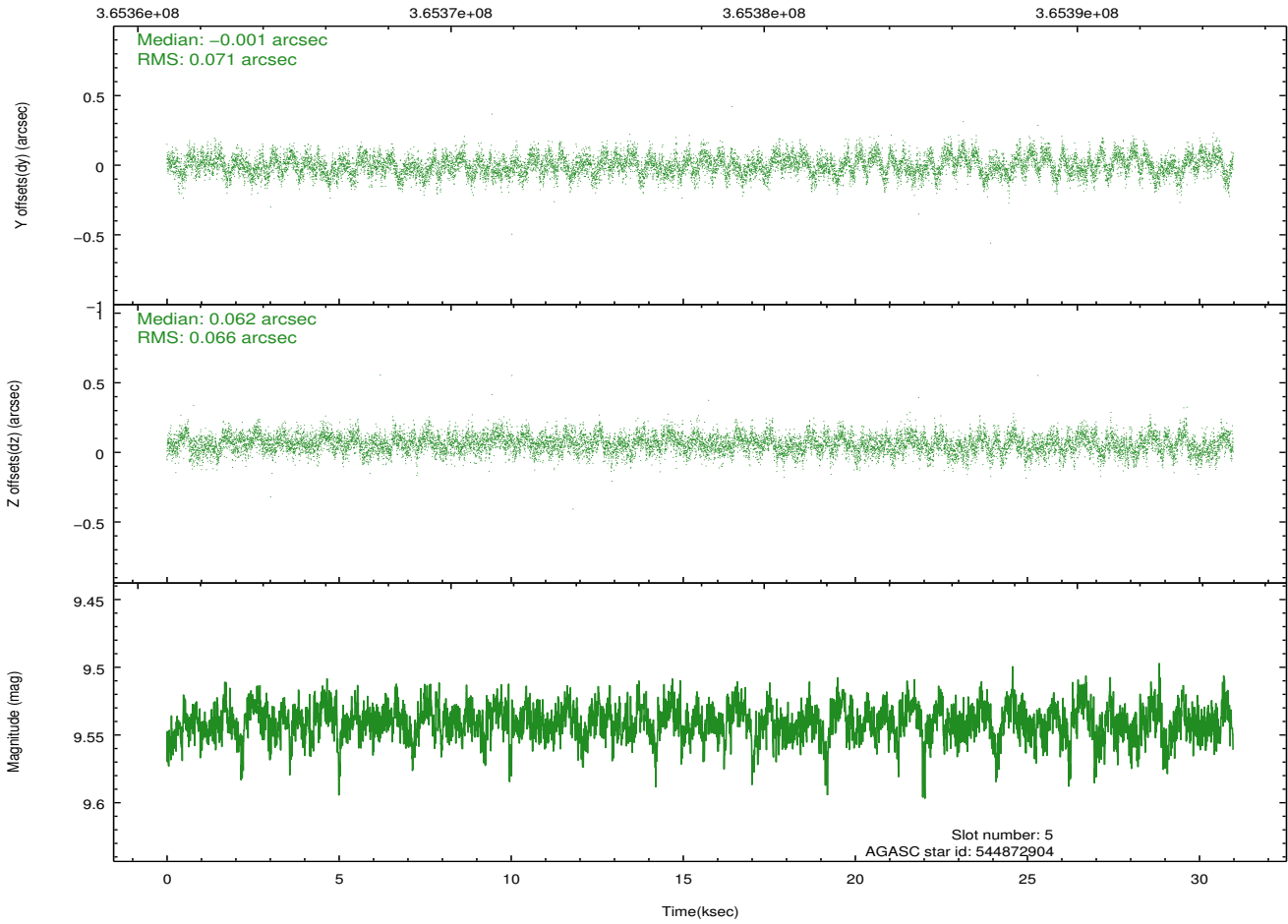
2.4.2 Slot 4



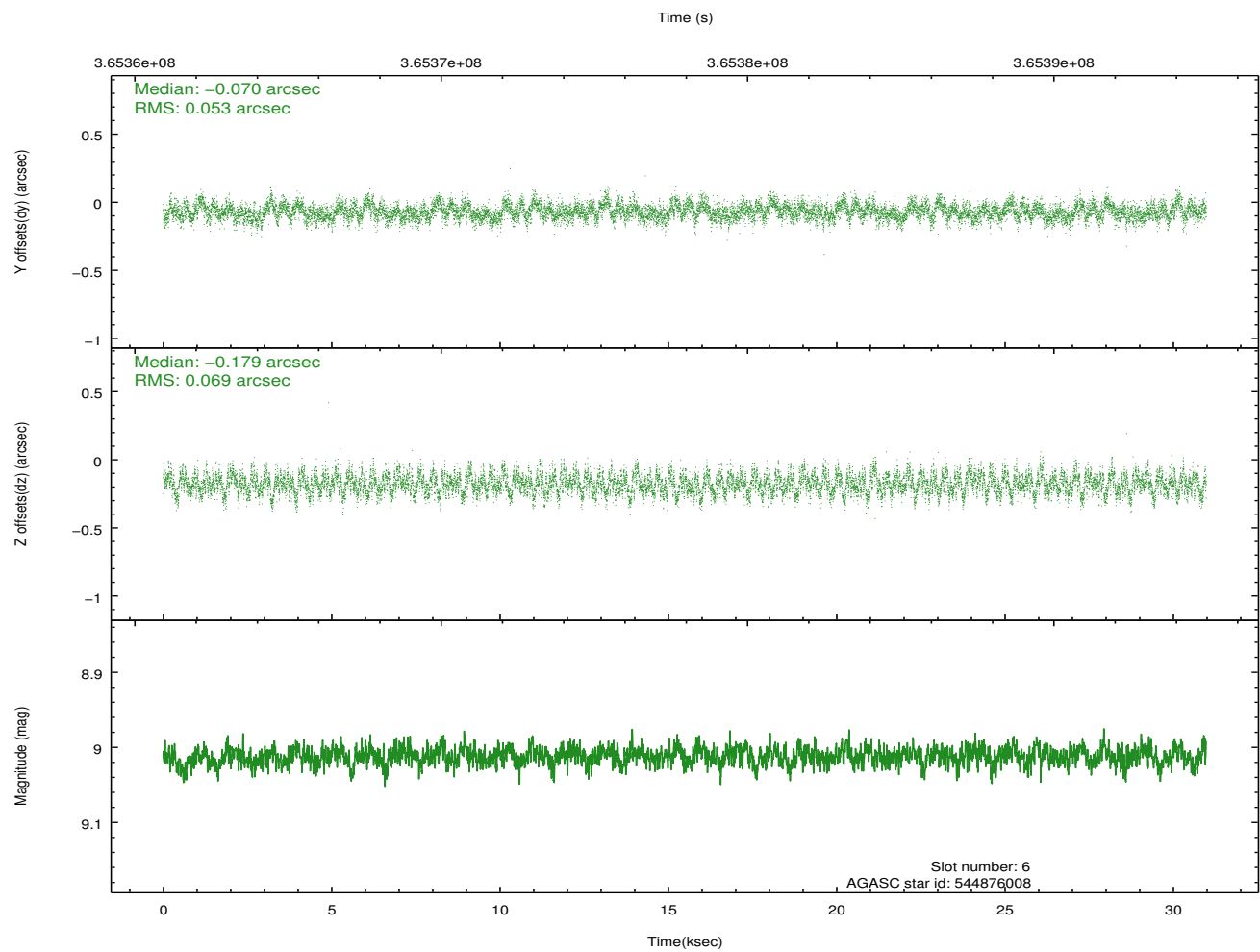
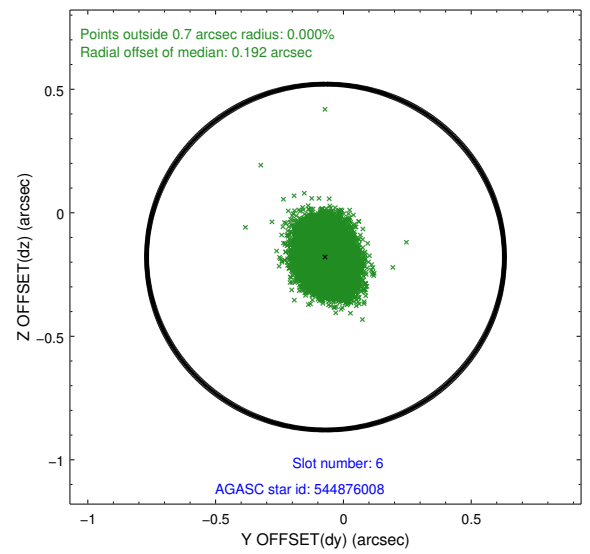
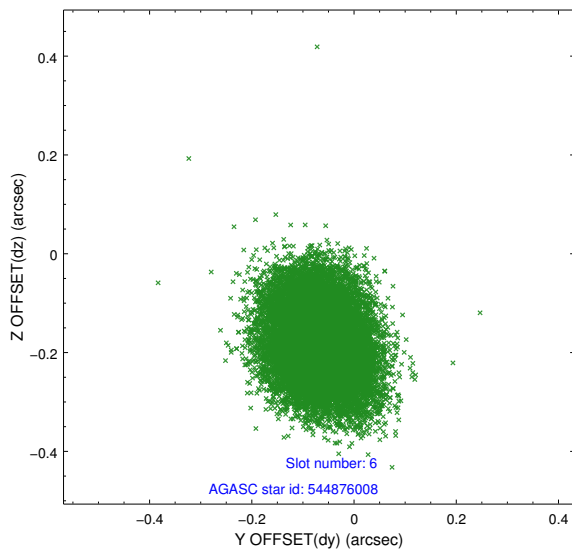
2.4.3 Slot 5



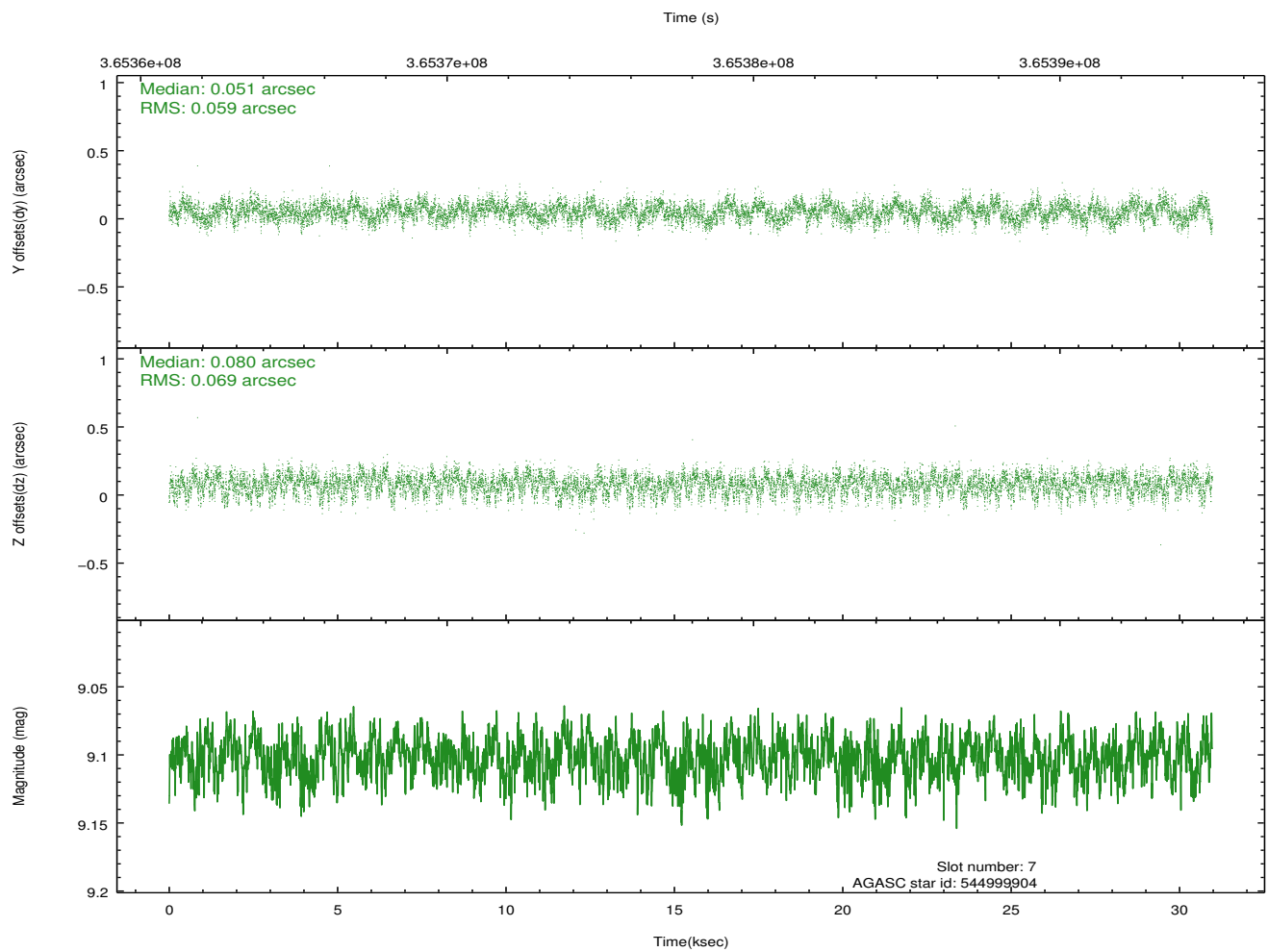
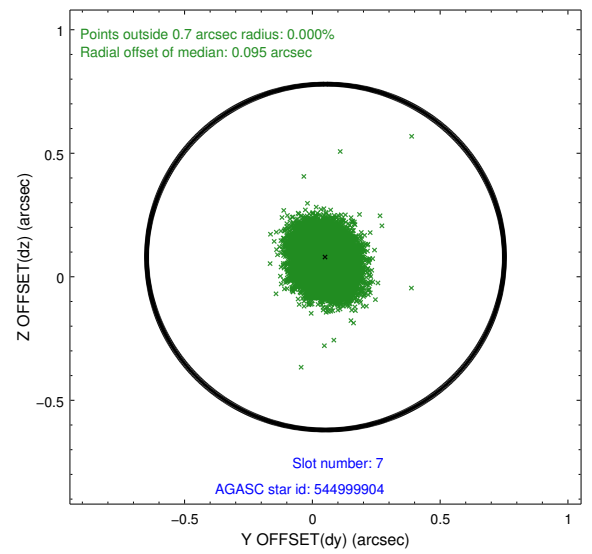
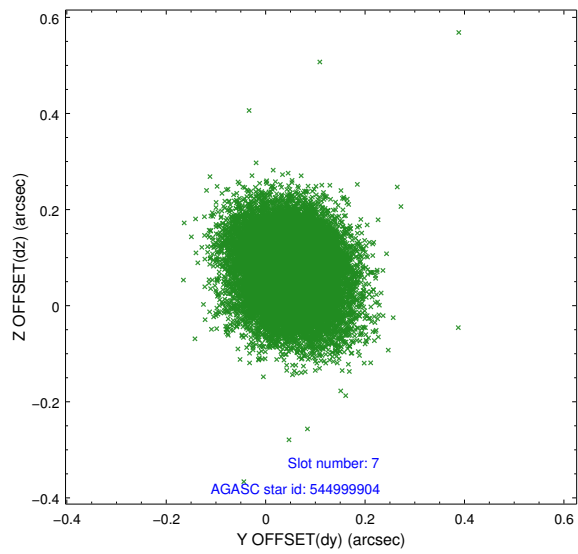
Time (s)



2.4.4 Slot 6

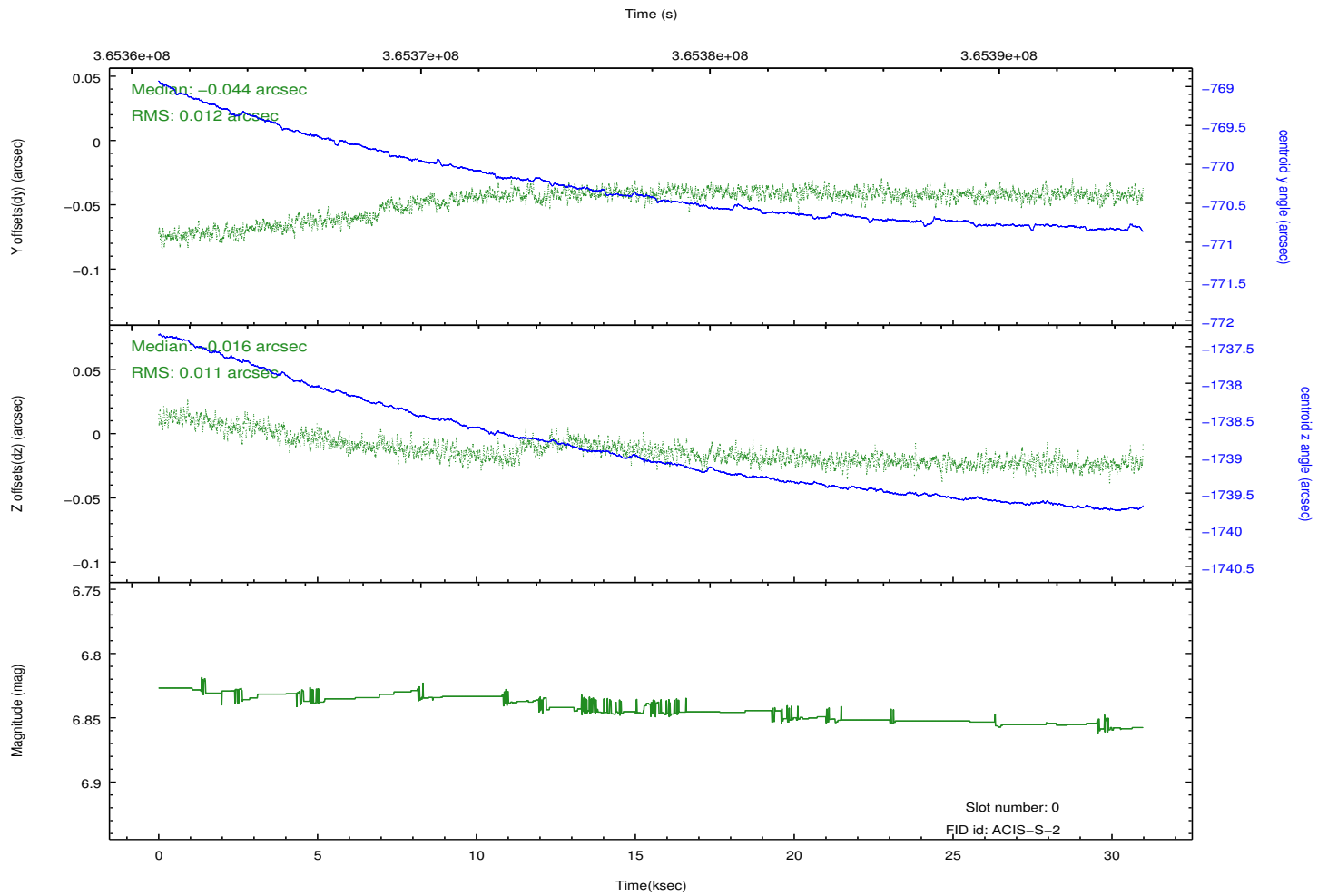
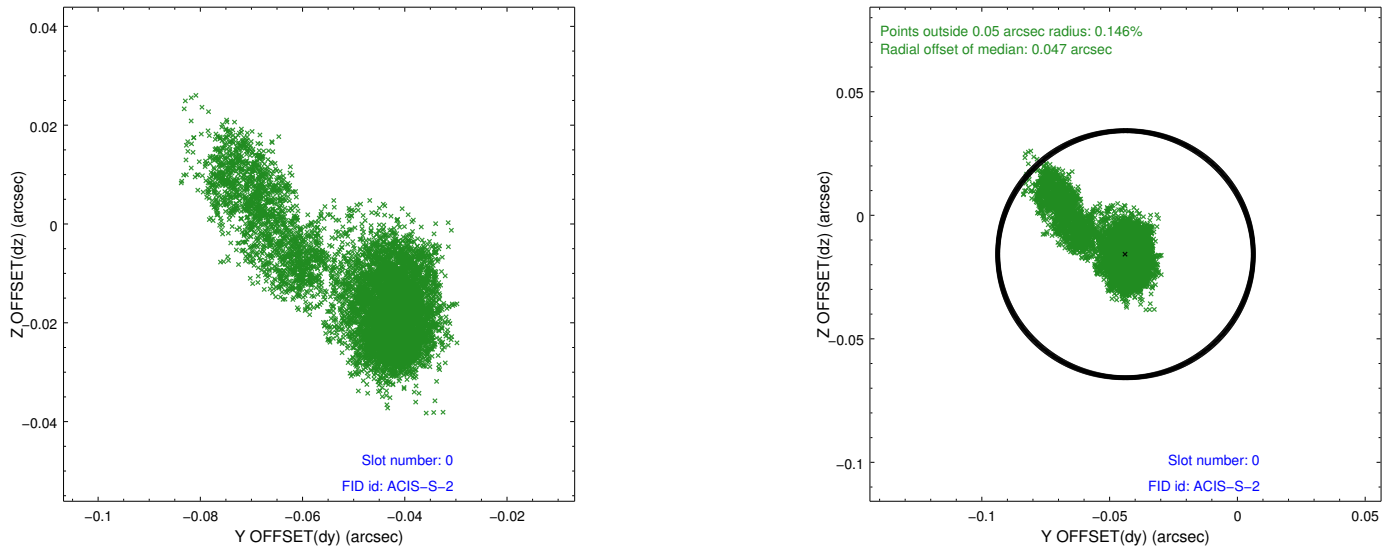


2.4.5 Slot 7

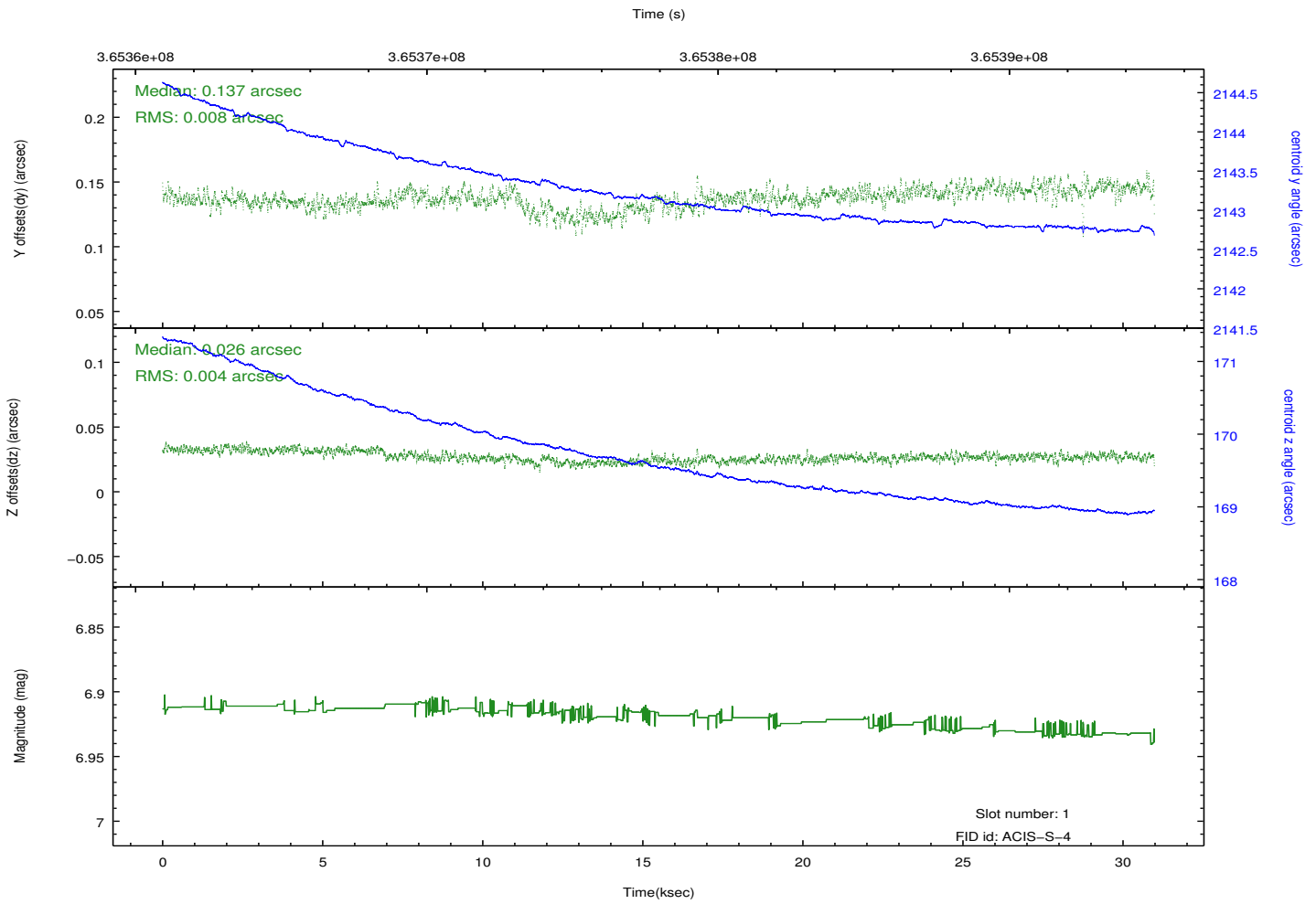
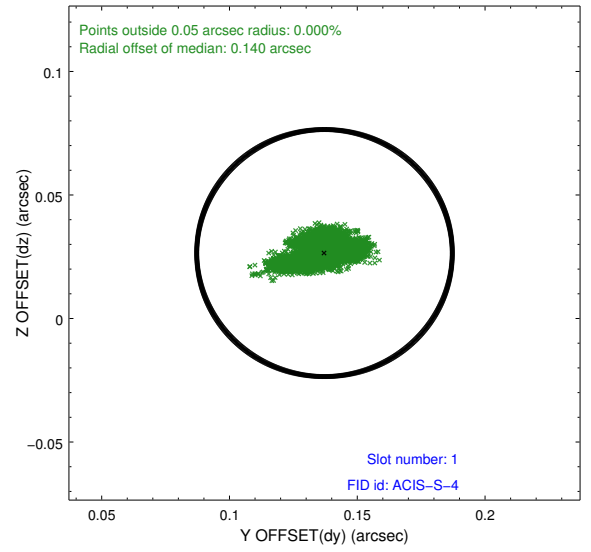
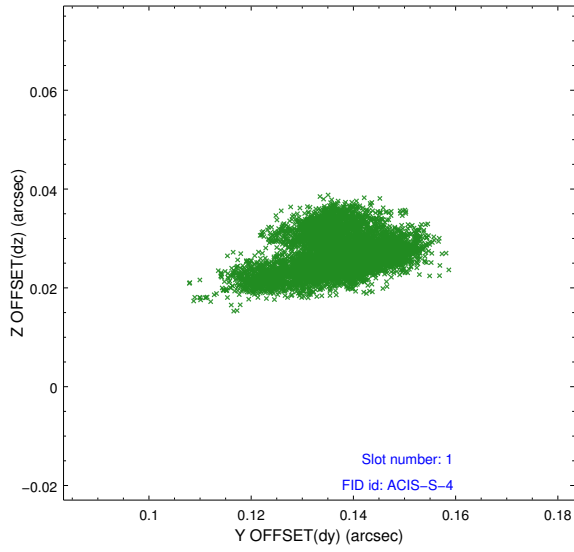


2.5 FID Slots

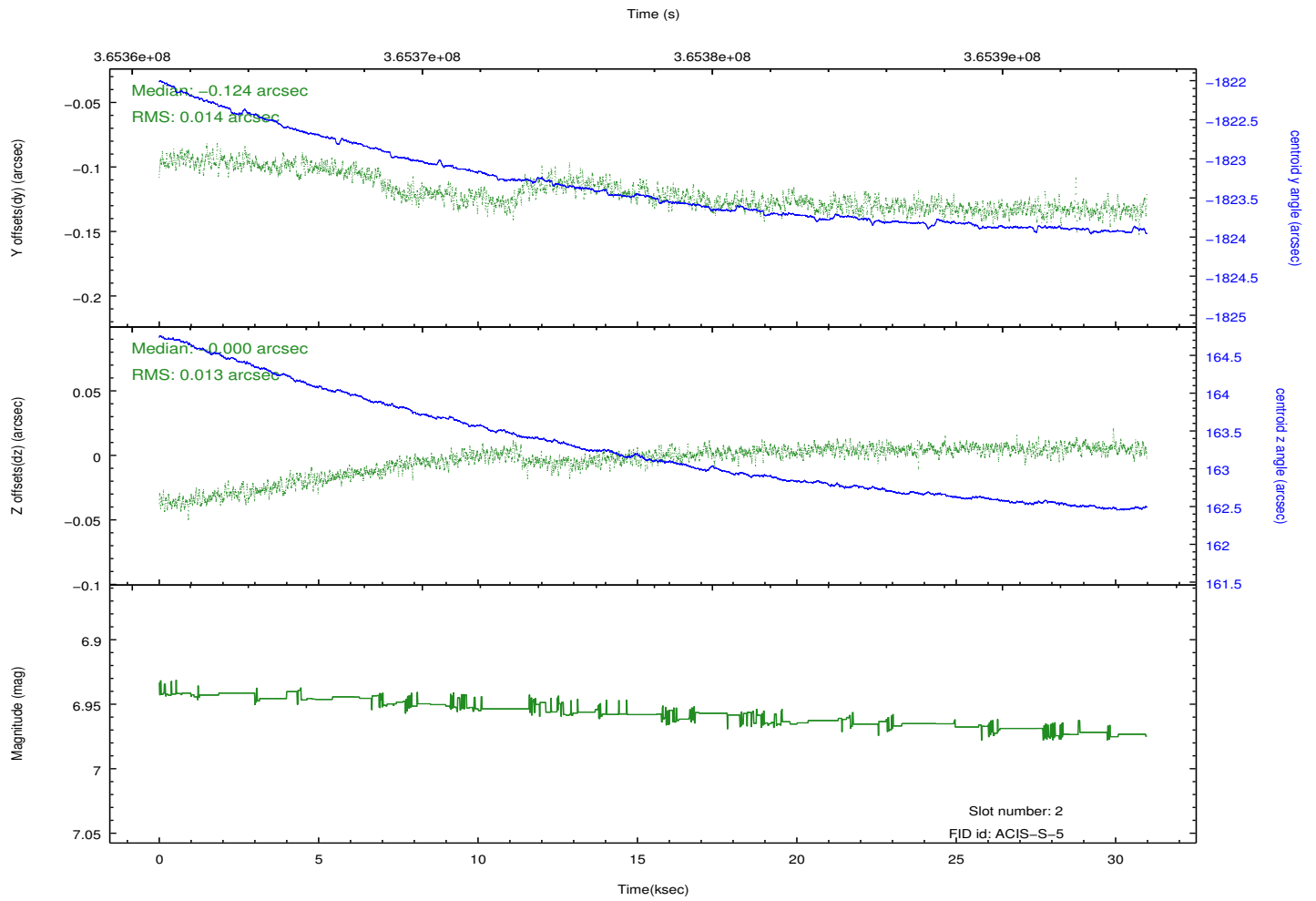
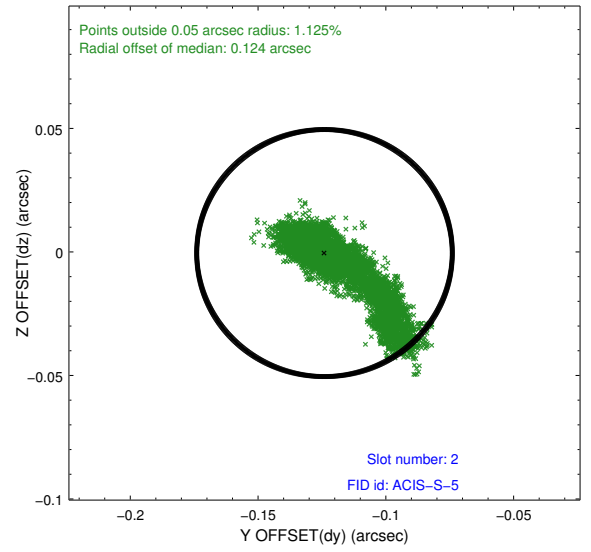
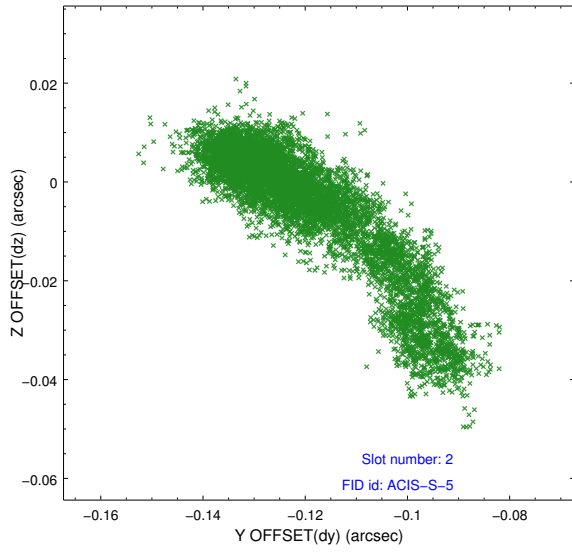
2.5.1 Slot 0



2.5.2 Slot 1



2.5.3 Slot 2



A Summary

A.1 Status

V&V Scientist	Jen Lauer
V&V Date (YYYY-MM-DD)	2012.06.14
V&V Edition	1
V&V Disposition and Status	OK
V&V Charge Time	29.558399889946

A.2 Comments