

V&V Reference Report

L2 ASCDS Version : 8.4.5

Observation 10943 - L2 Version 2
Chandra X-Ray Center

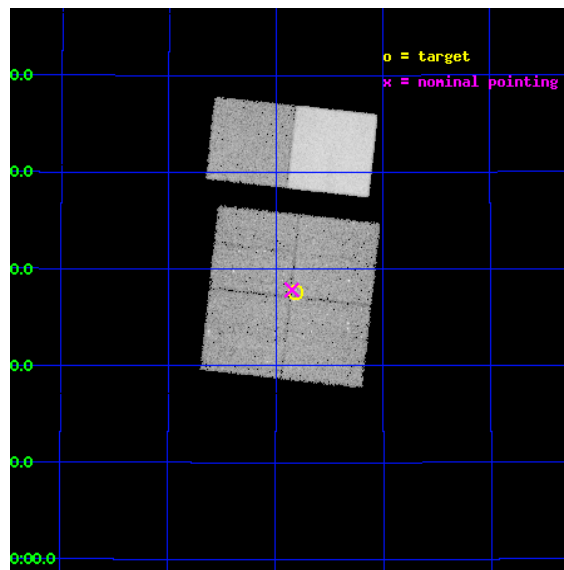
L2 Processing Date : Jun 20 2012

Contents

1	Front	2
2	OBI	3
2.1	OBI	3
2.1.1	Images	3
2.1.2	Bias	3
2.1.3	Parameters	4
2.1.4	Events	4
2.2	Compared Parameters	5
2.3	Aspect	6
2.4	Star Slots	9
2.4.1	Slot 3	9
2.4.2	Slot 4	10
2.4.3	Slot 5	11
2.4.4	Slot 6	12
2.4.5	Slot 7	13
2.5	FID Slots	14
2.5.1	Slot 0	14
2.5.2	Slot 1	15
2.5.3	Slot 2	16
A	Summary	17
A.1	Status	17
A.2	Comments	17

1 Front

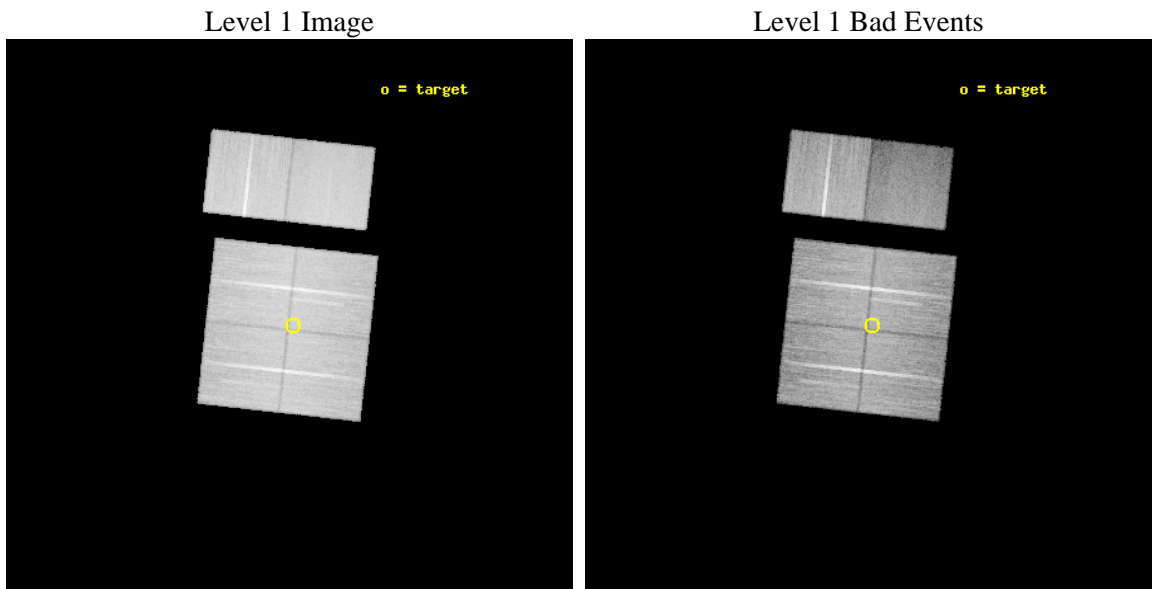
seq_num	200575	Sequence number
obs_id	10943	Observation id
title	The Chandra Cygnus OB2 Survey	Proposal title
observer	Dr. Jeremy Drake	Principal investigator
object	Cygnus OB2	Source name
dtcycle	0	
cycle	P	events from which exps? Prim/Second/Both
ra_targ	307.702401	Observer's specified target RA [deg]
dec_targ	41.461107	Observer's specified target Dec [deg]
ra_nom	307.71230865684	Nominal RA [deg]
dec_nom	41.46433575915	Nominal Dec [deg]
roll_nom	6.3142759599473	Nominal Roll [deg]
revision	2	Processing version of data
ontime	28764.717972159	Sum of GTIs [s]
livetime	28400.481793162	Livetime [s]
ontime0	28767.958942413	Sum of GTIs [s]
ontime1	28771.199892879	Sum of GTIs [s]
ontime2	28767.958932519	Sum of GTIs [s]
ontime3	28764.717972159	Sum of GTIs [s]
ontime6	28771.199892879	Sum of GTIs [s]
ontime7	28771.199892879	Sum of GTIs [s]
l2events	219380	Number of level 2 events



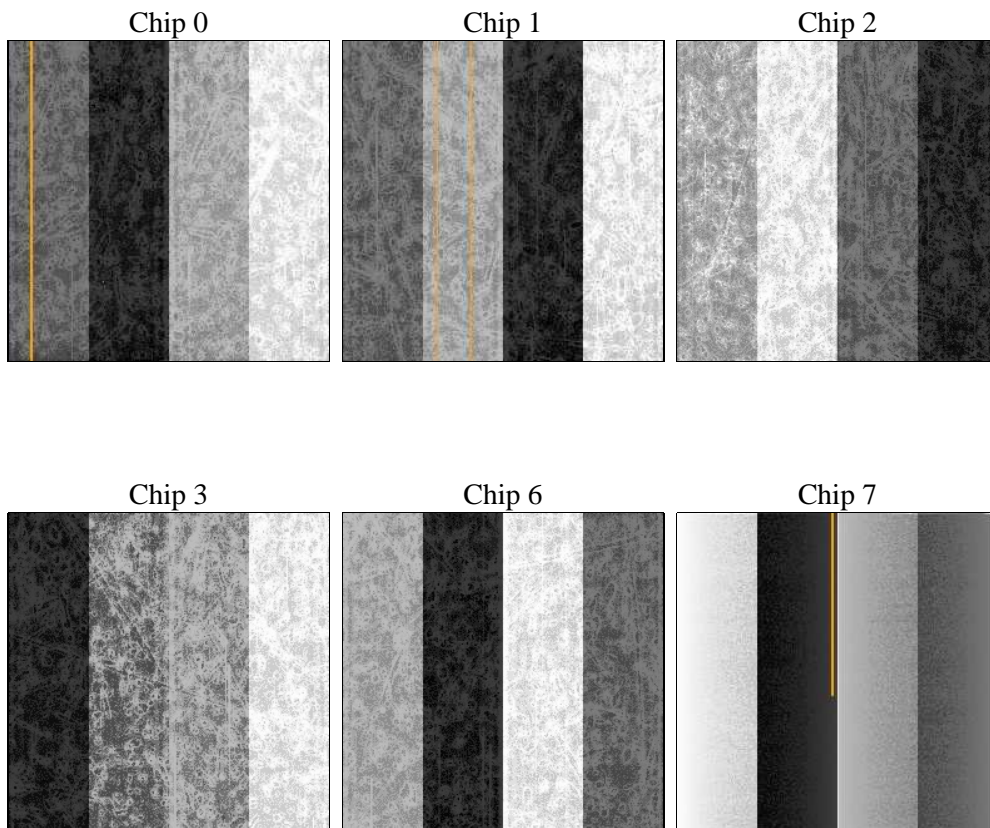
2 OBI

2.1 OBI

2.1.1 Images



2.1.2 Bias



2.1.3 Parameters

obi_num	0	Obi number	sched_exp_time	28624.545000	[s] Scheduled observation exposure time
ascdsver	8.4.5	Processing system revision	ontime	28764.717972159	Sum of GTIs [s]
caldbver	4.4.10	 	ontime0	28767.958942413	Sum of GTIs [s]
date	2012-06-20T13:17:49	Date and time of file creation	ontime1	28771.199892879	Sum of GTIs [s]
revision	2	Processing version of data	ontime2	28767.958932519	Sum of GTIs [s]
			ontime3	28764.717972159	Sum of GTIs [s]
			ontime6	28771.199892879	Sum of GTIs [s]
			ontime7	28771.199892879	Sum of GTIs [s]
			l1events	1371463	Number of level 1 events

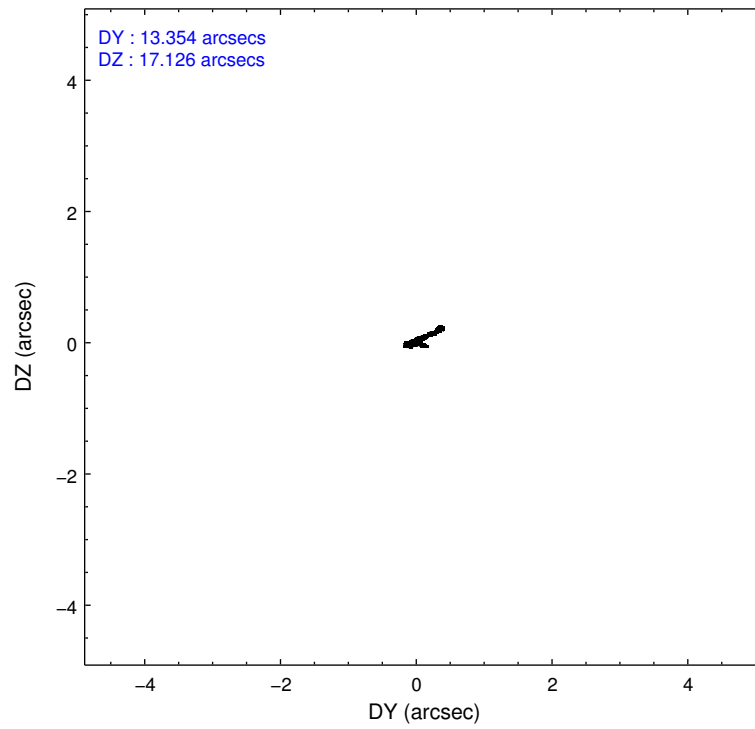
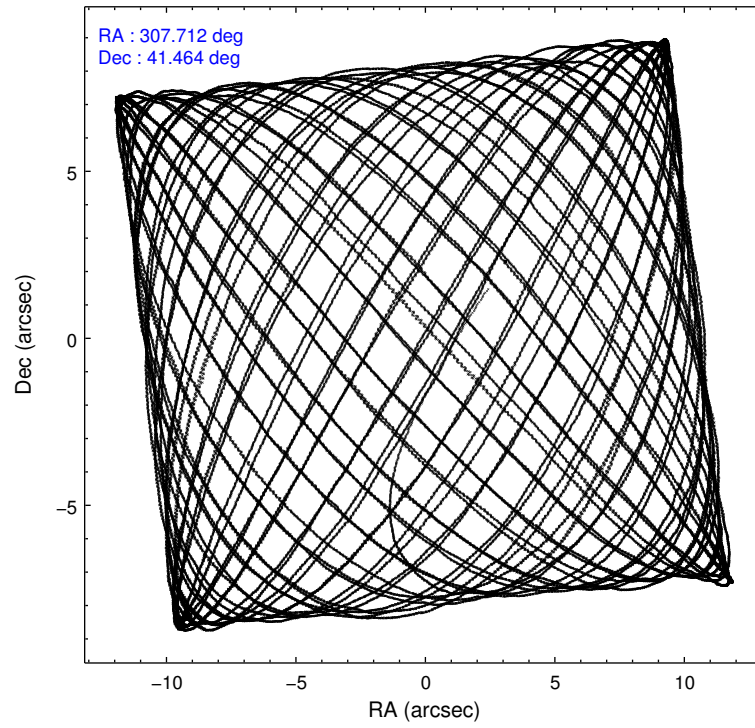
2.1.4 Events

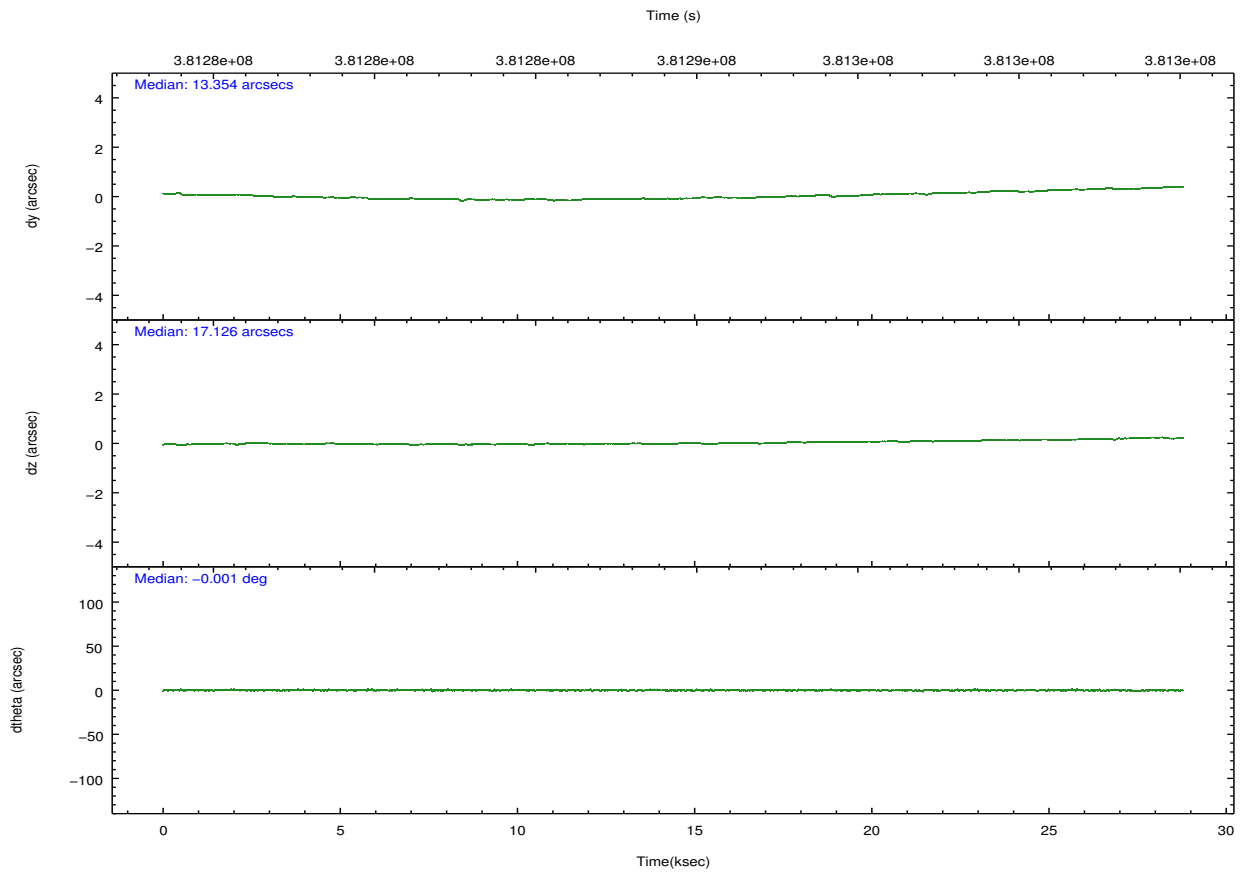
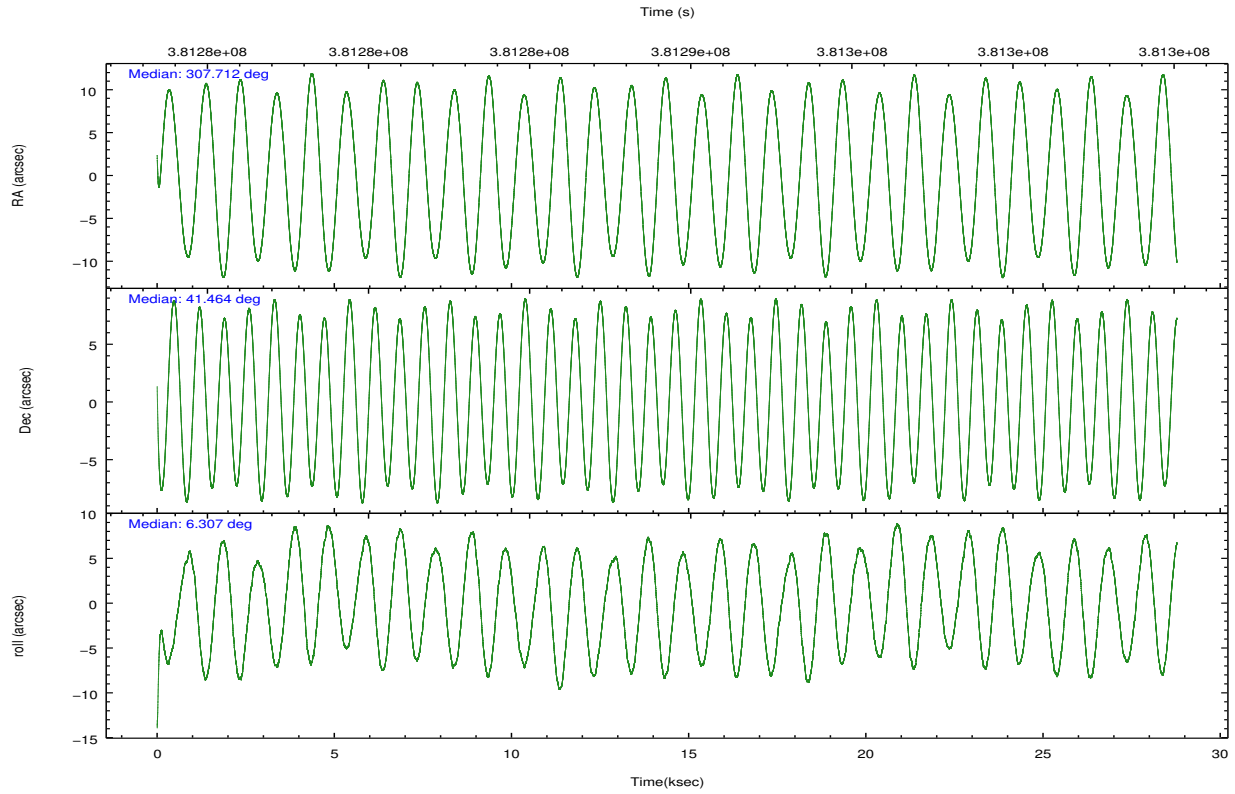
	ccd 0	ccd 1	ccd 2	ccd 3	ccd 6	ccd 7		ccd 0	ccd 1	ccd 2	ccd 3	ccd 6	ccd 7
level 1 events	215100	212868	240442	226450	242999	233604	grade 0 events	11182	10777	11346	9994	10478	11834
rejected events	188261	185762	214082	202429	217023	119631		5%	5%	4%	4%	4%	5%
rejected %	87%	87%	89%	89%	89%	51%	grade 1 events	168	126	178	157	142	380
								0%	0%	0%	0%	0%	0%
							grade 2 events	6361	5963	6194	5191	5828	25048
								2%	2%	2%	2%	2%	10%
							grade 3 events	2752	2885	2540	2608	2639	10870
								1%	1%	1%	1%	1%	4%
							grade 4 events	2482	2824	2533	2518	2597	10820
								1%	1%	1%	1%	1%	4%
							grade 5 events	7516	7836	6911	8297	8565	24775
								3%	3%	2%	3%	3%	10%
							grade 6 events	4618	5236	4317	4246	5074	58005
								2%	2%	1%	1%	2%	24%
							grade 7 events	180021	177221	206423	193439	207676	91872
								83%	83%	85%	85%	85%	39%

2.2 Compared Parameters

Parameter	Planned	Actual	Parameter	Planned	Actual
Instrument	ACIS	ACIS	Obspar format version number	7	7
Detector	ACIS-012367	ACIS-012367	Obspar file type	PREDICTED	ACTUAL
Grating	NONE	NONE	Obspar update status	NONE	UPDATED
Data mode	VFAINT	VFAINT	CCD I0 on	Y	Y
Observation mode	POINTING	POINTING	CCD I1 on	Y	Y
[deg] Pointing RA	307.682804	307.712308656845	CCD I2 on	Y	Y
[deg] Pointing Dec	41.447969	41.46433575914958	CCD I3 on	Y	Y
[deg] Pointing Roll	6.125134	6.314275959947286	CCD S0 on	N	N
[mm] SIM focus pos	-0.782348	-0.7809083437167272	CCD S1 on	N	N
[mm] SIM defocus	0	0.001439871863259334	CCD S2 on	O2	Y
[mm] SIM translation stage pos	-233.592463	-233.5874344608287	CCD S3 on	O1	Y
[mm] SIM translation stage offset	0	-0.005018542100998502	CCD S4 on	N	N
[s] Observation start time (MET)	381275034.184000	381273643.77988	CCD S5 on	N	N
Observation start date	2010-01-30T21:42:48	2010-01-30T21:20:43	Number of optional ACIS chips dropped	0	0
[s] Observation end time (MET)	381303658.184000	381303896.65641	On-chip summing requested	N	N
Observation end date	2010-01-31T05:39:52	2010-01-31T05:44:56	Subarray requested	NONE	NONE
Read mode	TIMED	TIMED	Alternating exposures requested	N	N
			[s] Primary exposure time	0.000000	3.2

2.3 Aspect



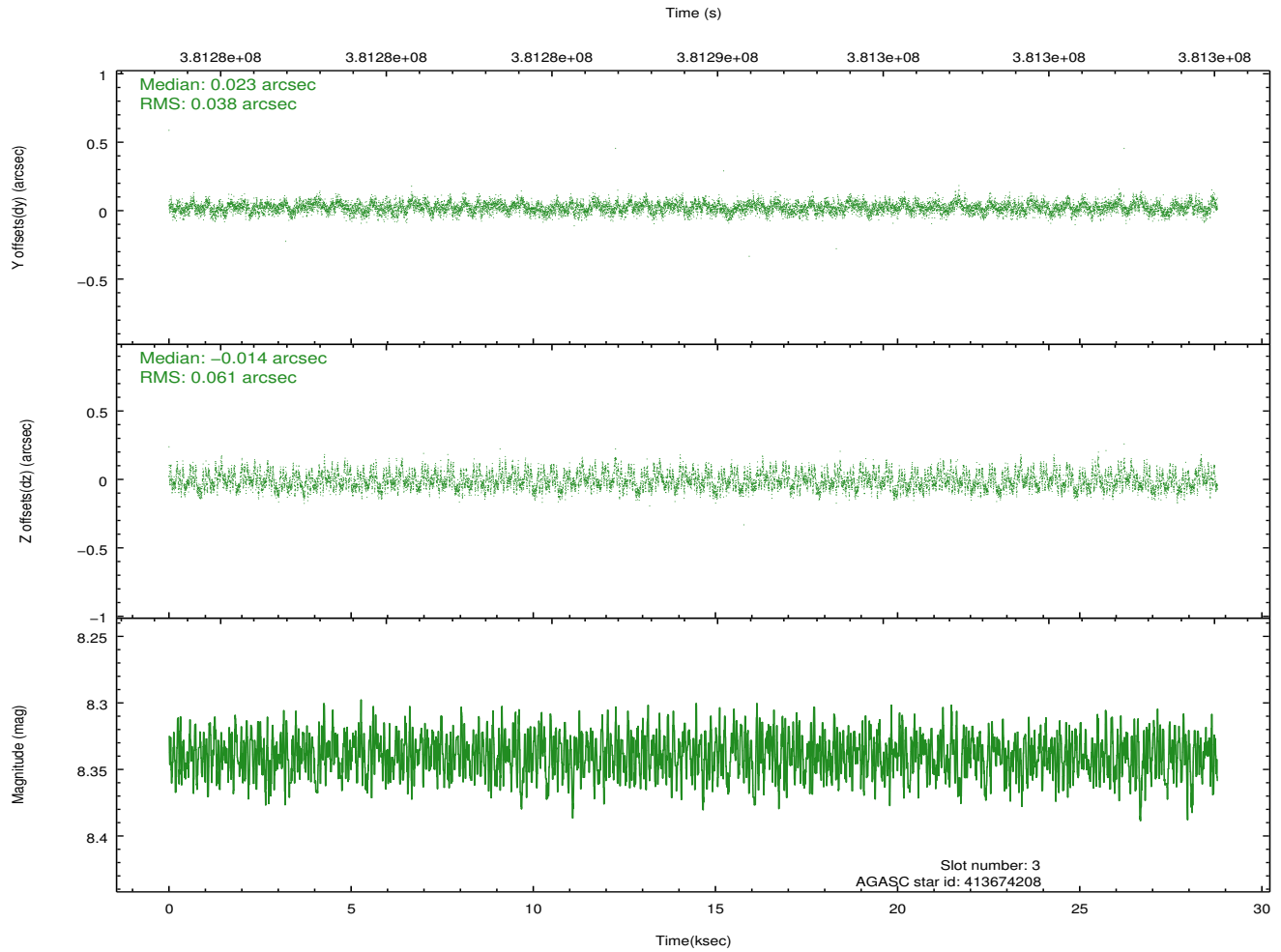
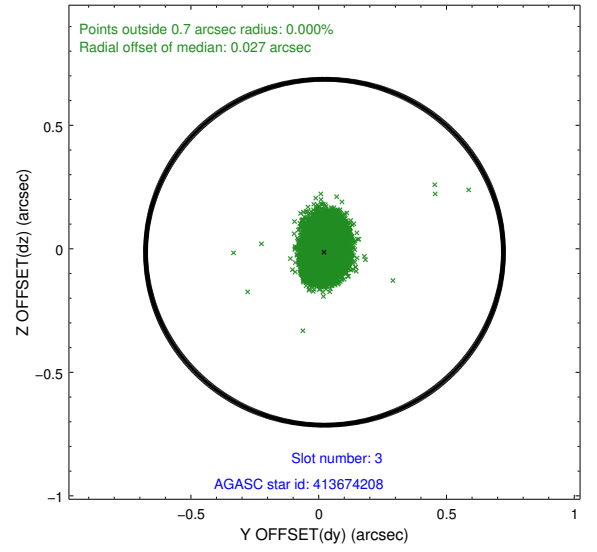
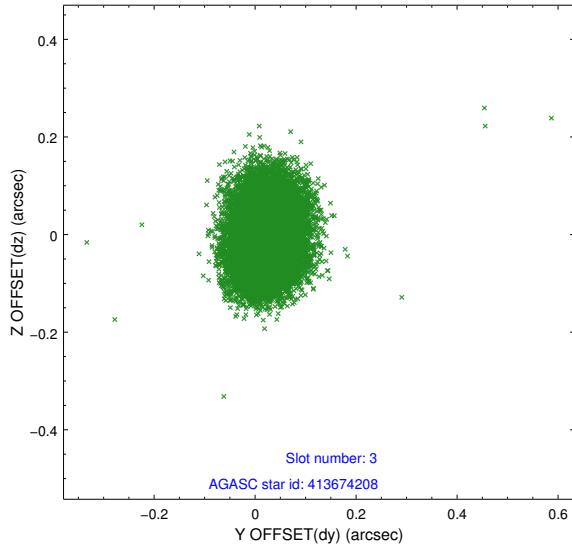


Slot Statistics

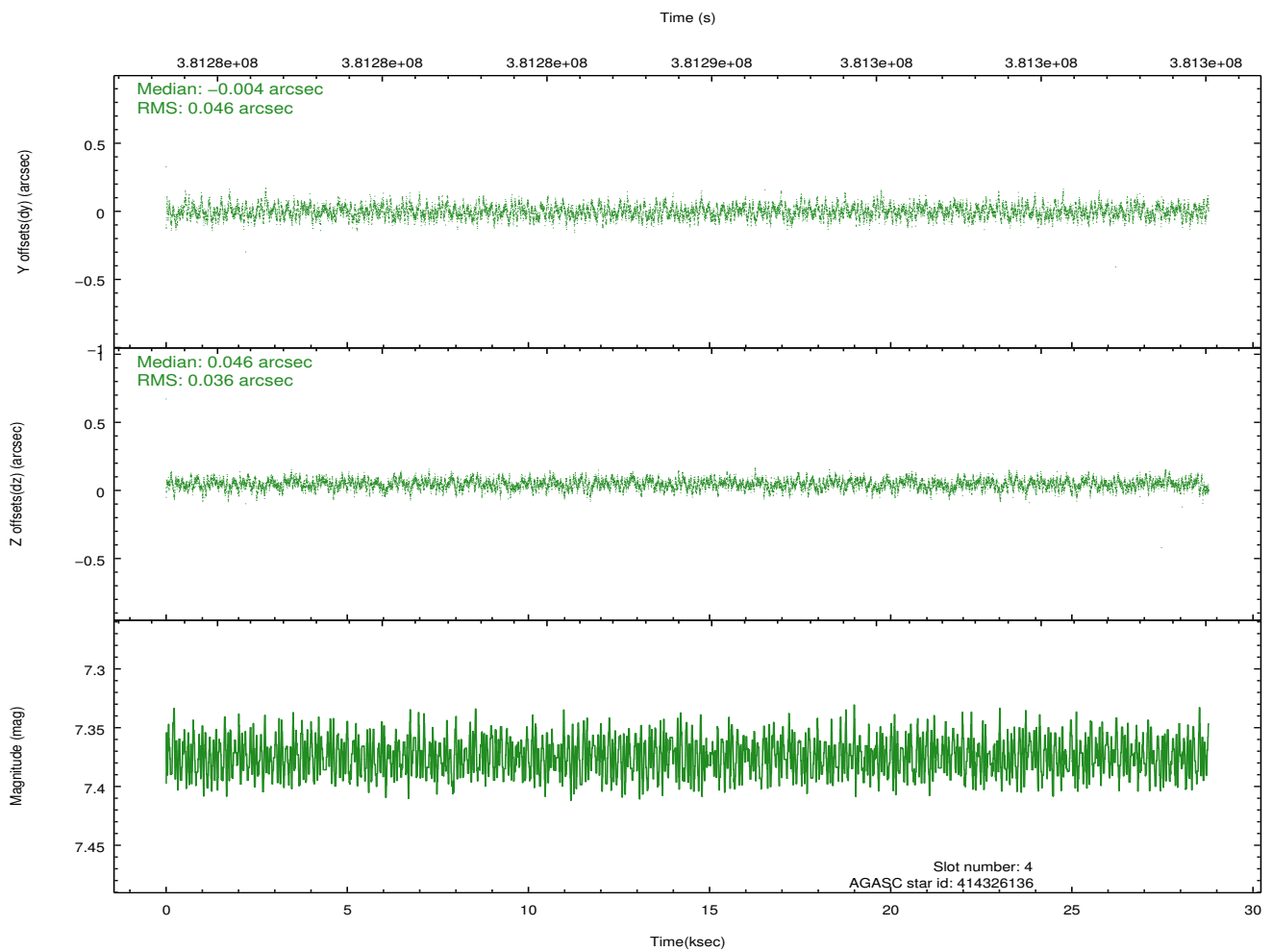
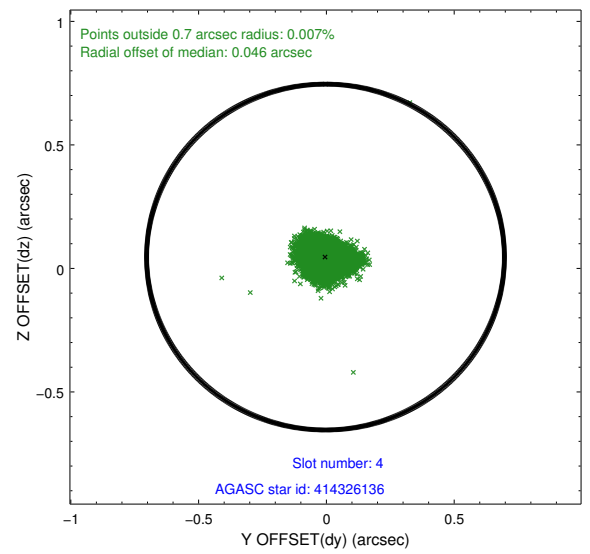
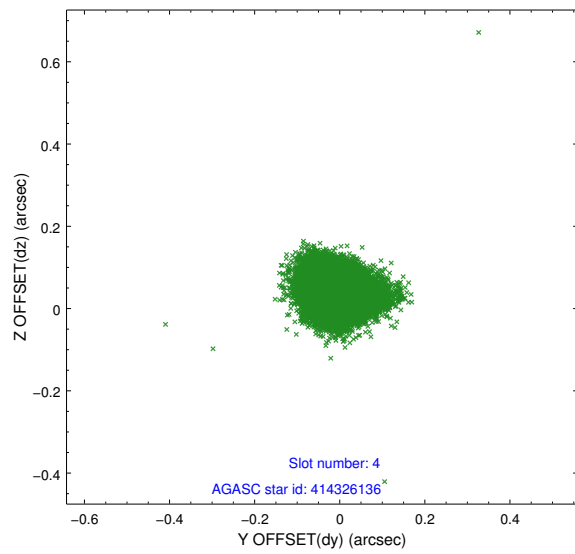
slot	status	id	mag	n_pts	med_dy	med_dz	dr1	dr2	ra	dec	mean_y	mean_z
0	FID	ACIS-I-1	7.02	7019	0.069	-0.031	0.007	0.011	0.000000	0.000000	926.16	-840.87
1	FID	ACIS-I-5	7.01	7019	-0.203	0.075	0.009	0.018	0.000000	0.000000	-1822.14	1056.73
2	FID	ACIS-I-6	7.02	7019	0.043	0.026	0.008	0.014	0.000000	0.000000	391.64	1701.24
3	GUIDE	413674208	8.34	14036	0.023	-0.014	0.076	0.123	307.139504	40.901877	-1678.84	-1792.35
4	GUIDE	414326136	7.37	14039	-0.004	0.046	0.061	0.099	308.256176	41.473642	1548.34	-67.31
5	GUIDE	413800040	8.53	14023	-0.048	-0.011	0.074	0.120	308.324931	40.981886	1557.32	-1847.80
6	GUIDE	414199536	8.58	13900	0.059	0.170	0.061	0.100	307.117380	41.957142	-1308.90	1989.20
7	GUIDE	414200552	8.01	14027	-0.028	-0.194	0.078	0.129	307.125971	42.009807	-1264.99	2174.88

2.4 Star Slots

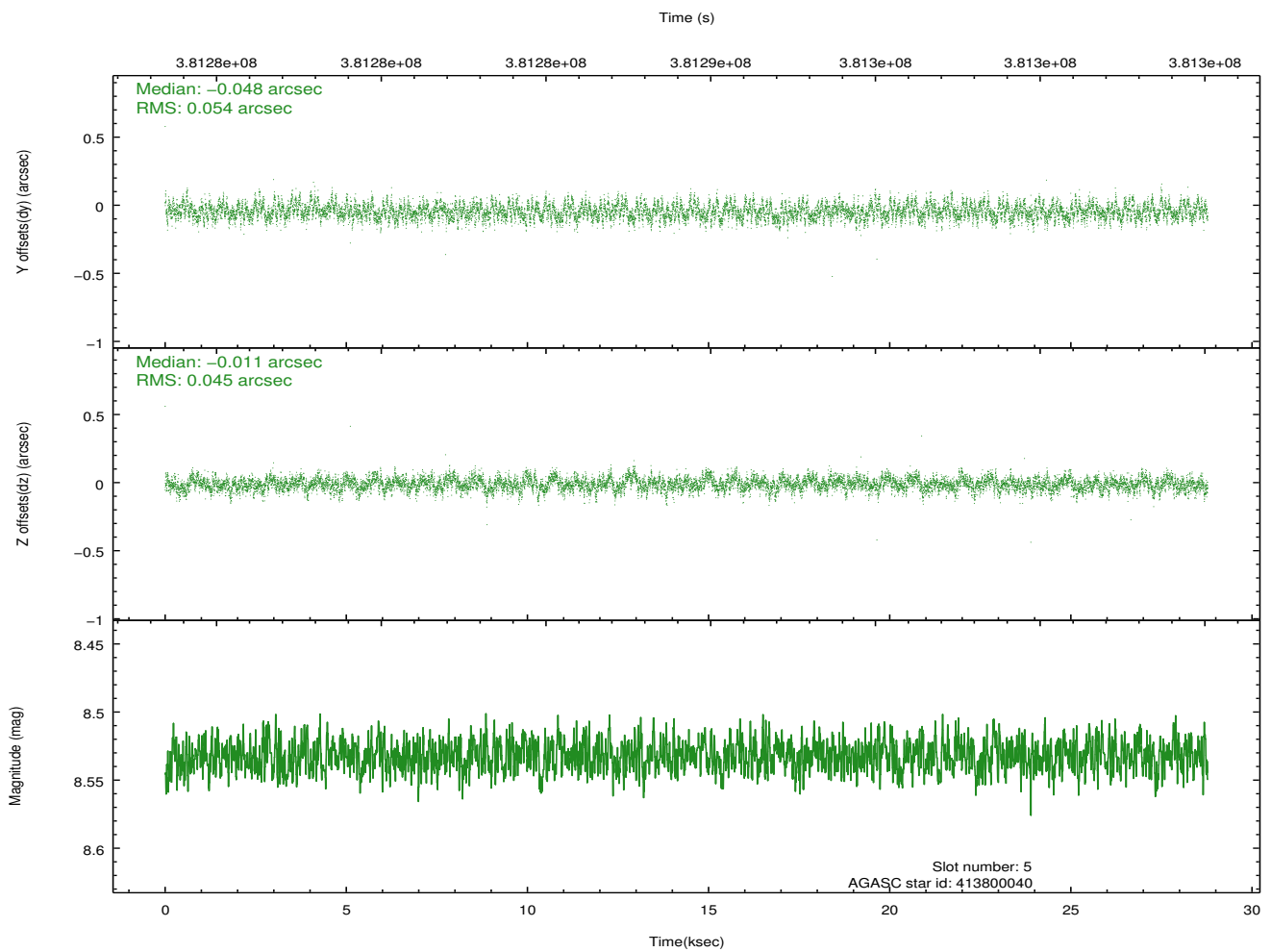
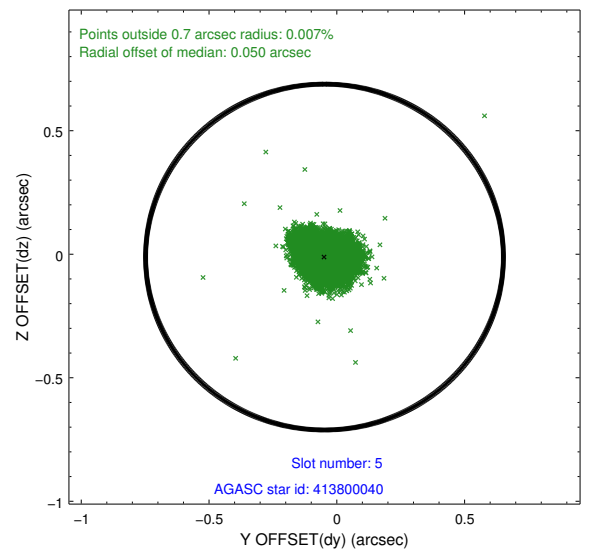
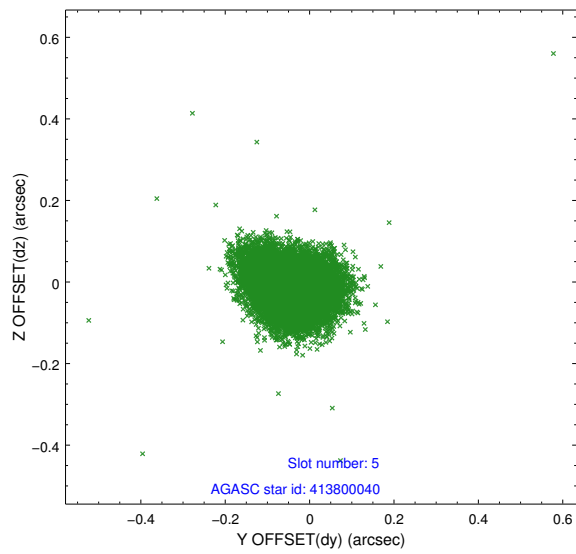
2.4.1 Slot 3



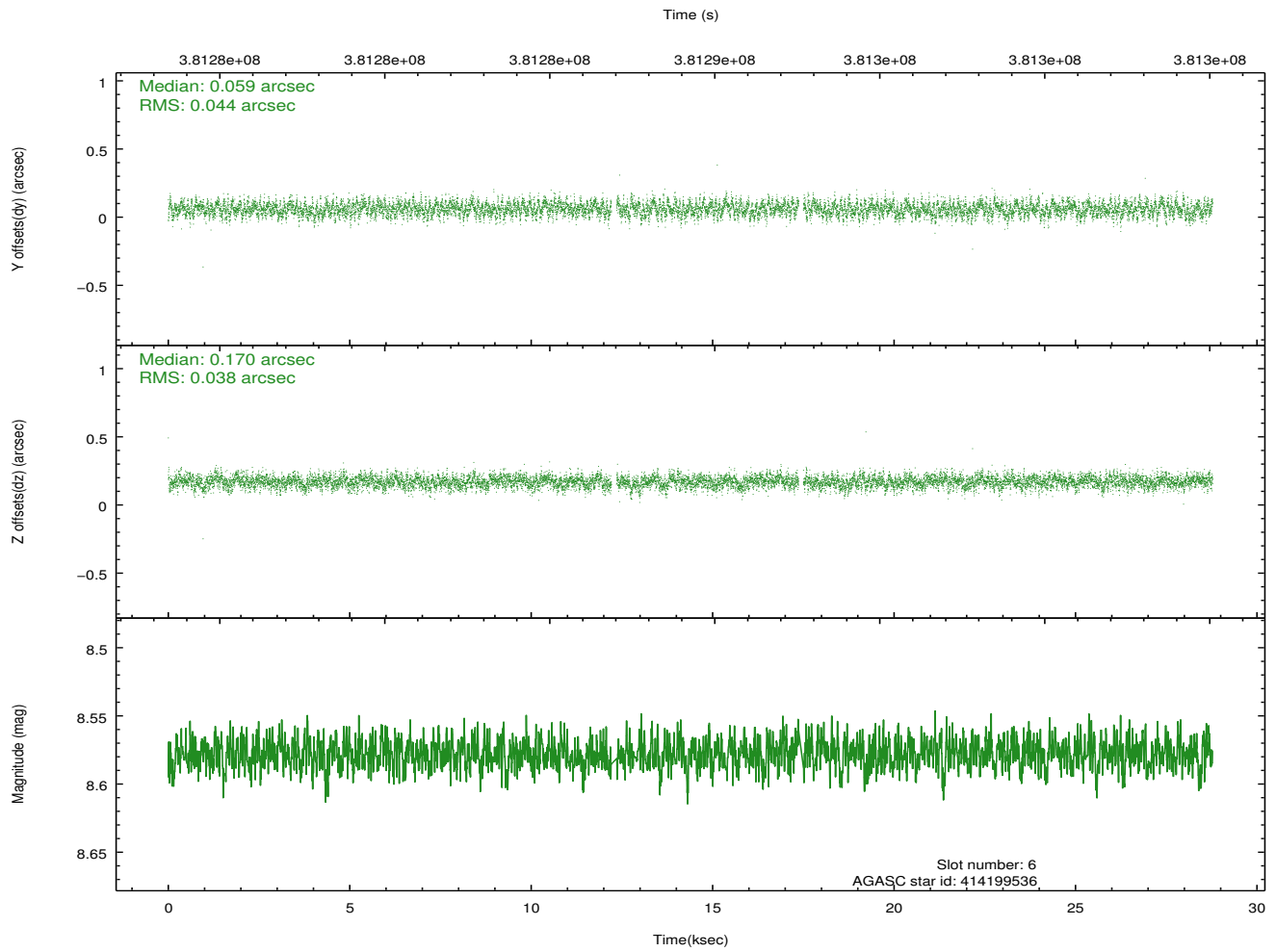
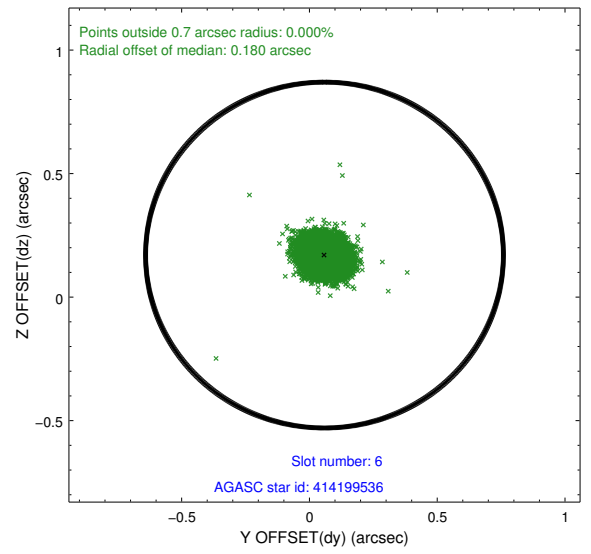
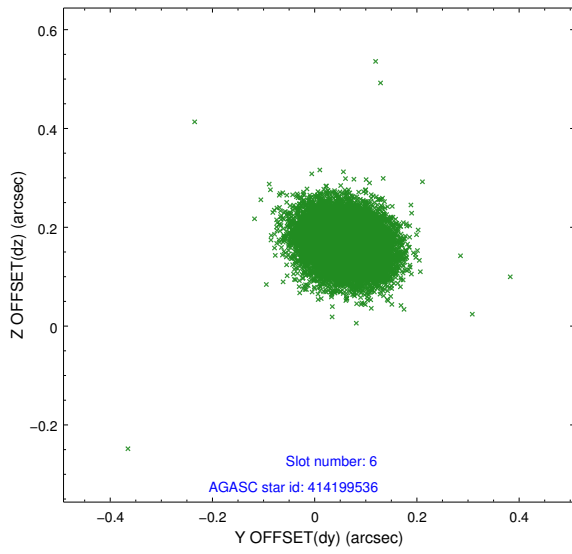
2.4.2 Slot 4



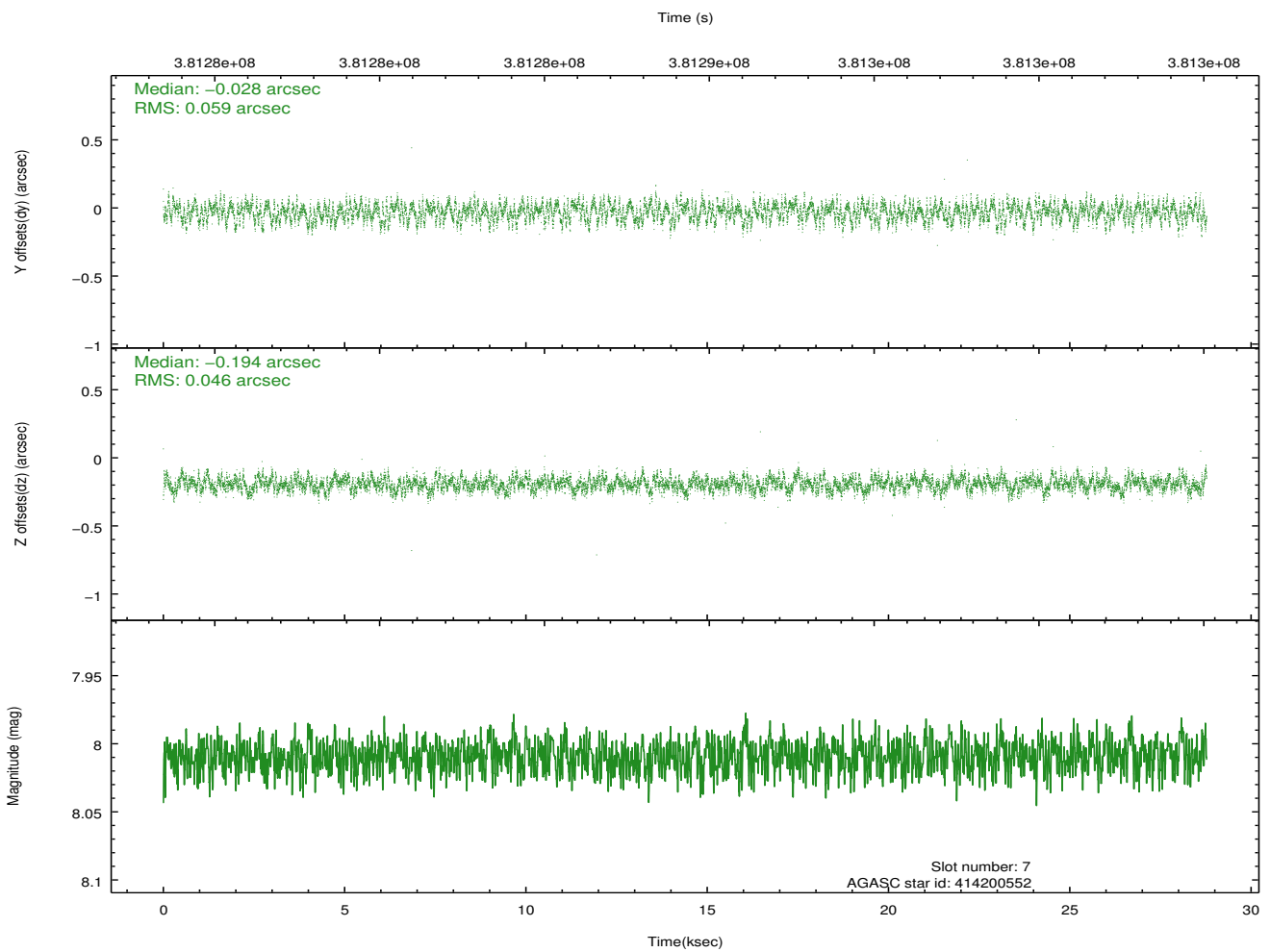
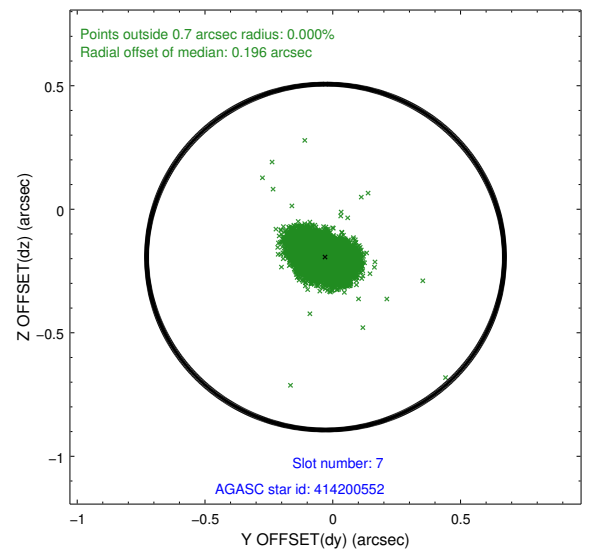
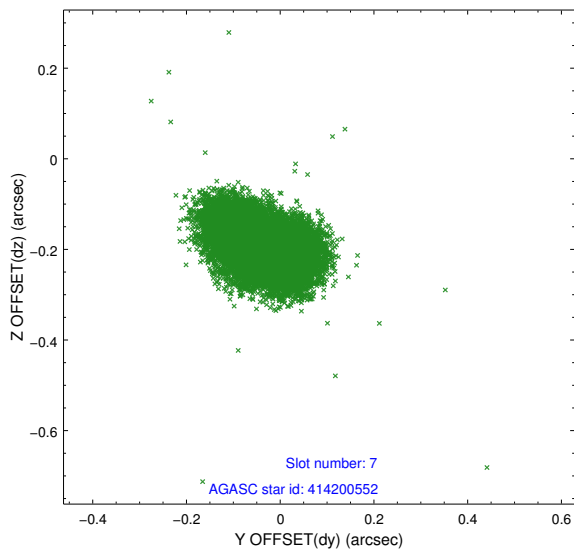
2.4.3 Slot 5



2.4.4 Slot 6

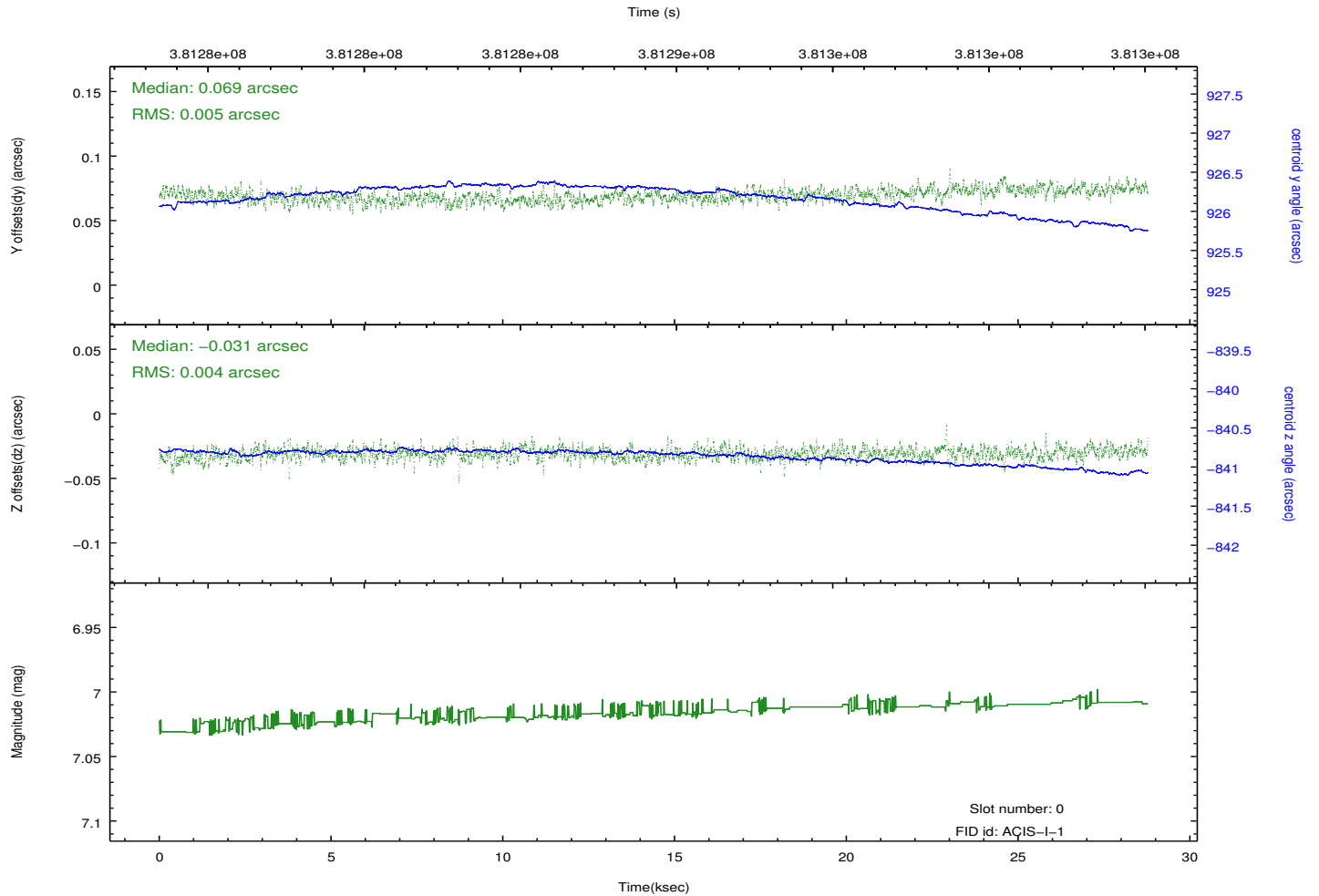
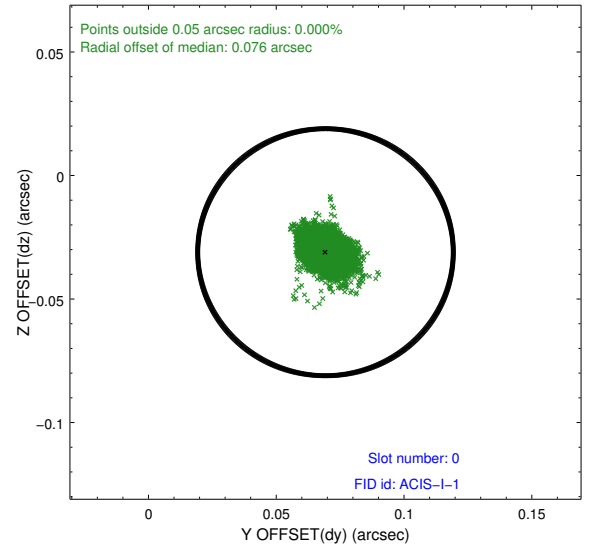
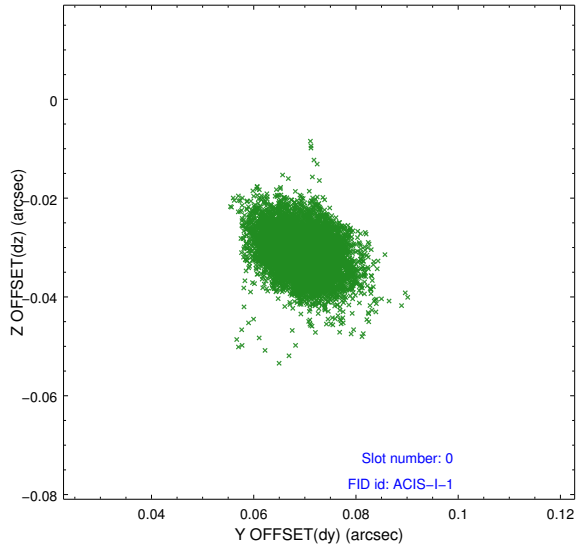


2.4.5 Slot 7

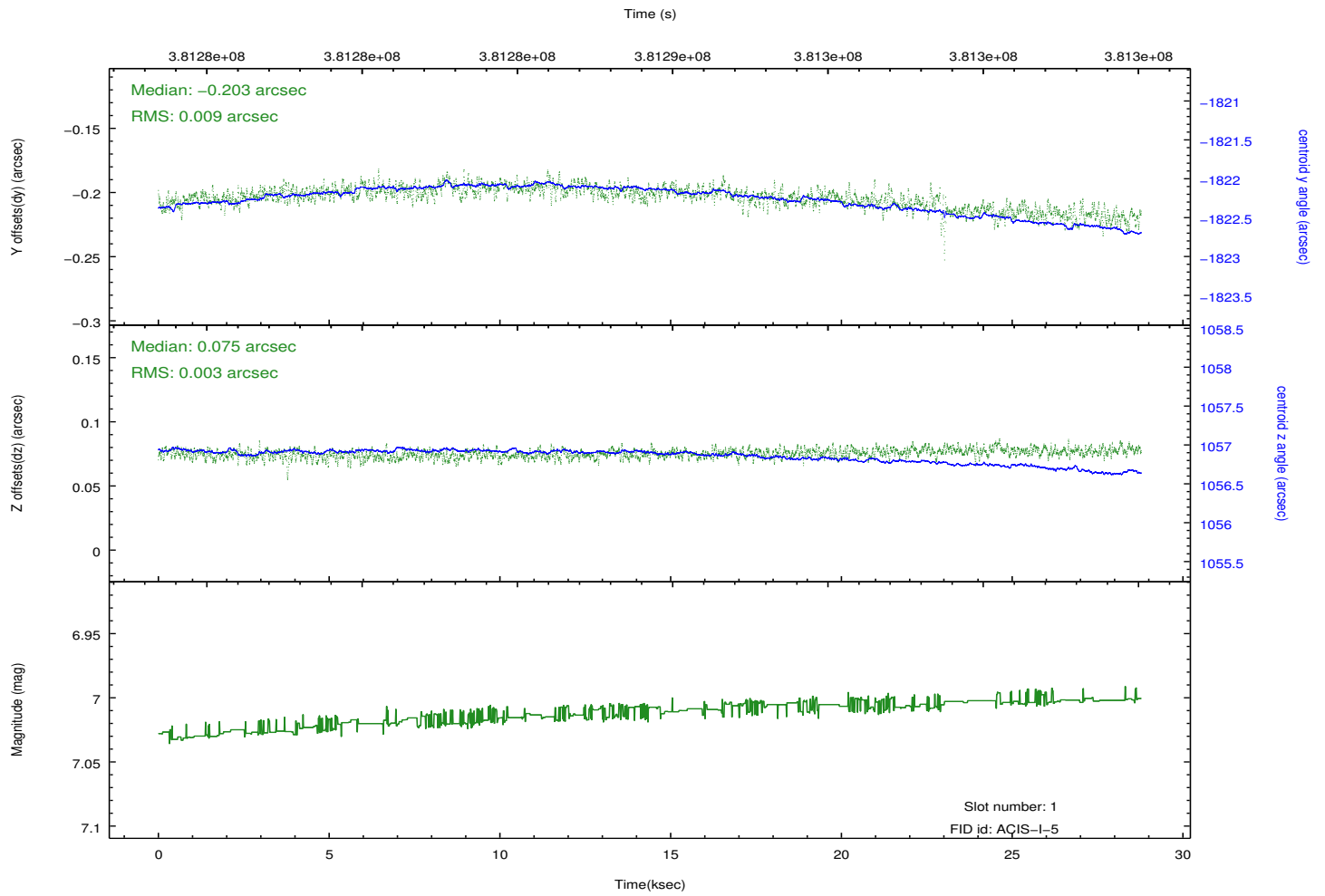
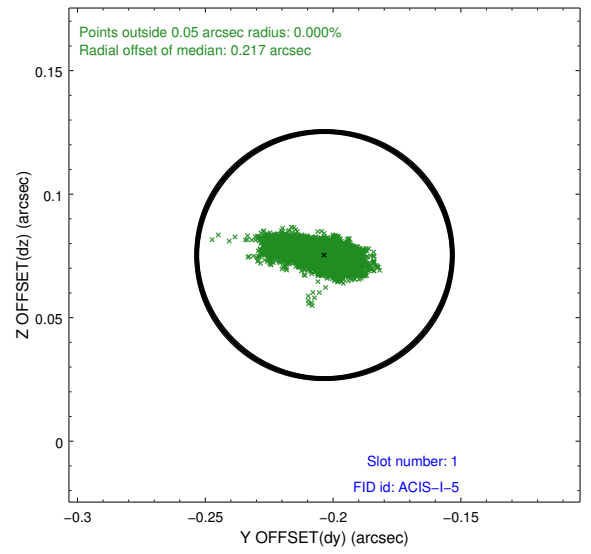
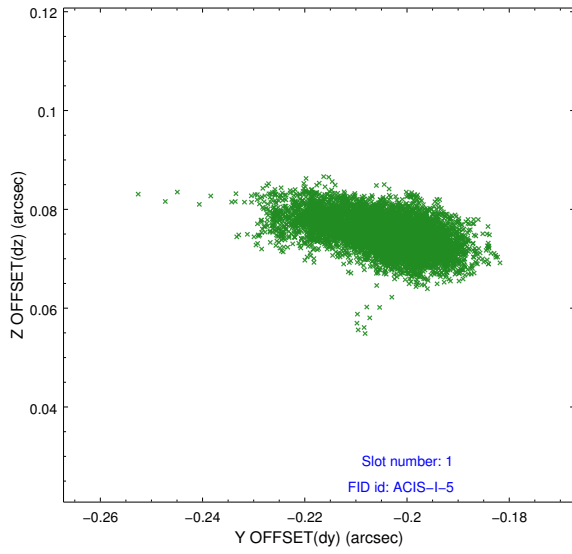


2.5 FID Slots

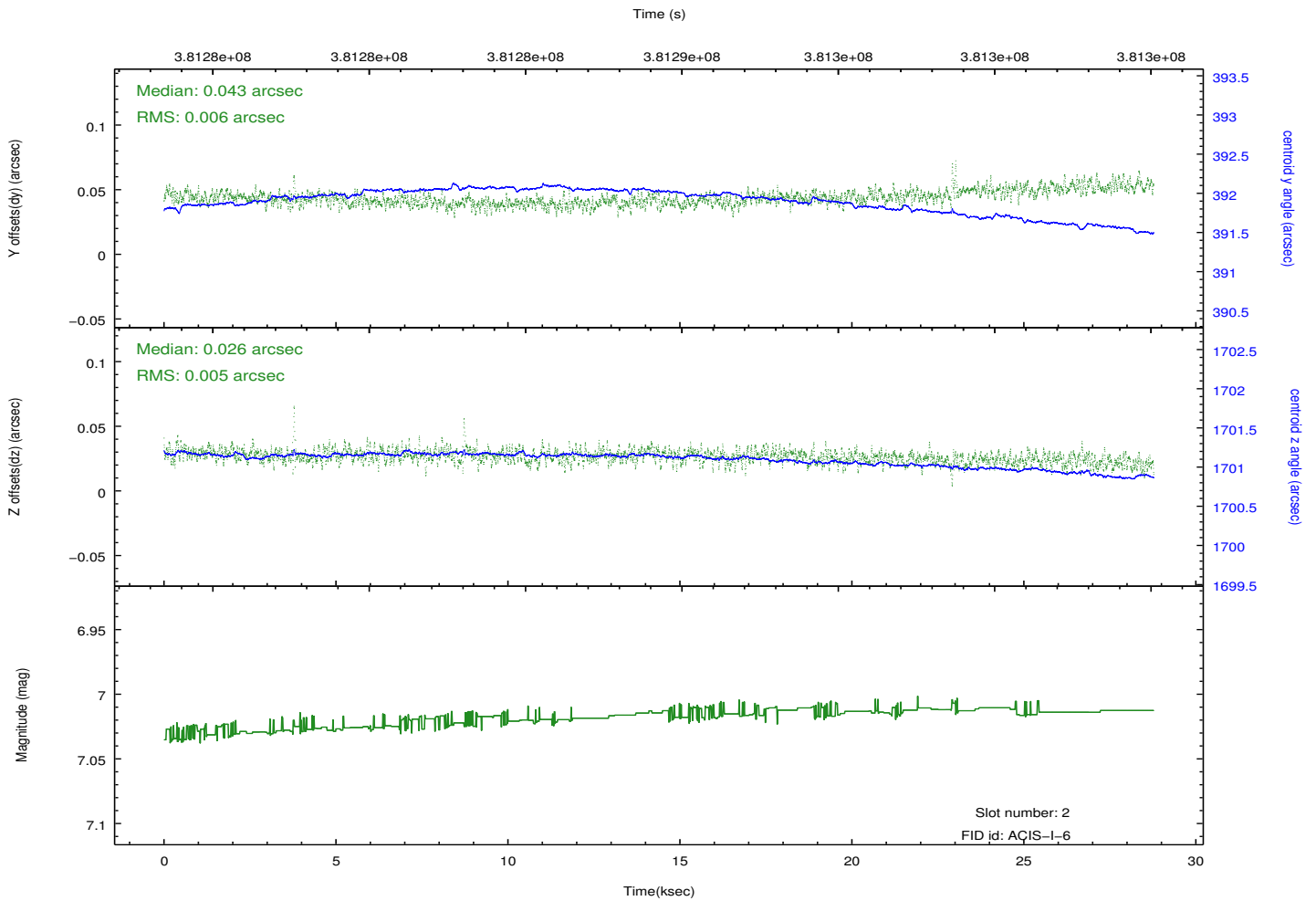
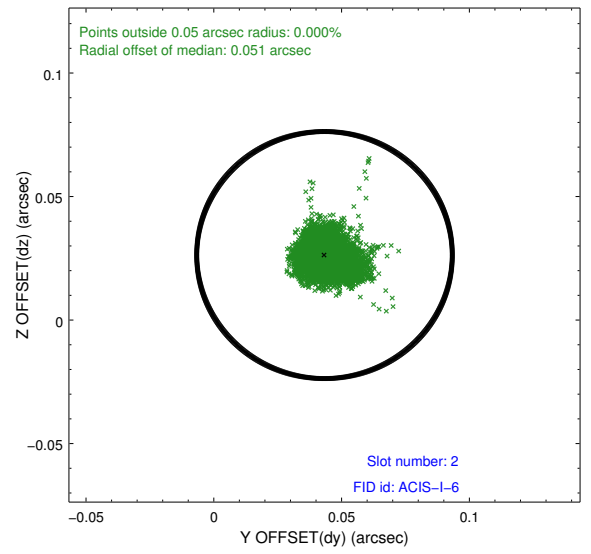
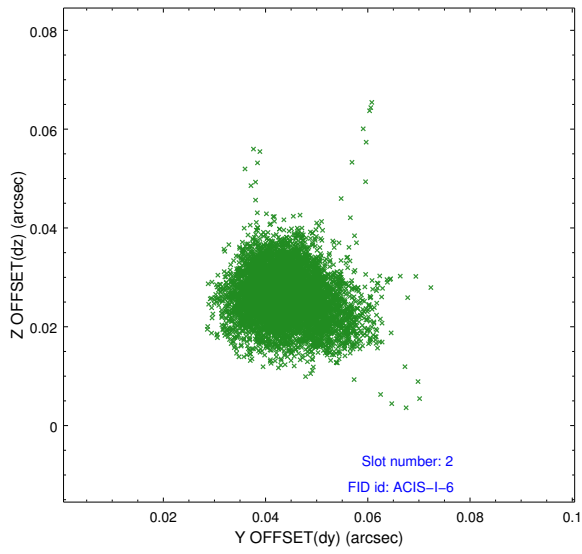
2.5.1 Slot 0



2.5.2 Slot 1



2.5.3 Slot 2



A Summary

A.1 Status

V&V Scientist	Jen Lauer
V&V Date (YYYY-MM-DD)	2012.06.26
V&V Edition	1
V&V Disposition and Status	OK
V&V Charge Time	28.764717972219

A.2 Comments

Roll preference met.