

# V&V Reference Report

## L2 ASCDS Version : 8.4.5

Observation 10983 - L2 Version 3  
Chandra X-Ray Center

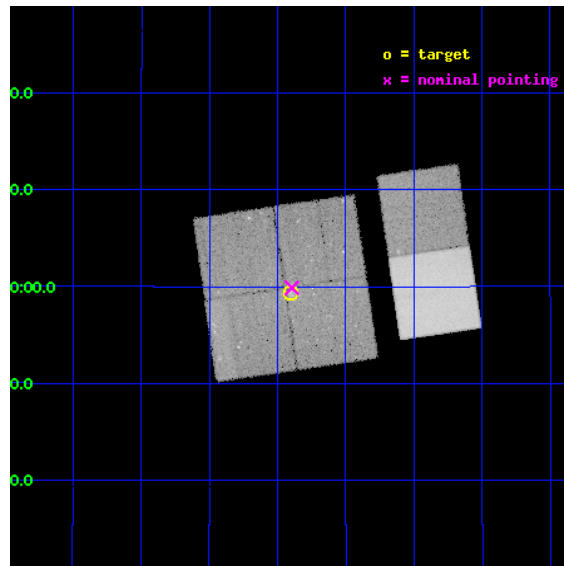
L2 Processing Date : Jun 16 2012

## Contents

<b>1</b>	<b>Front</b>	<b>2</b>
<b>2</b>	<b>OBI</b>	<b>3</b>
2.1	OBI . . . . .	3
2.1.1	Images . . . . .	3
2.1.2	Bias . . . . .	3
2.1.3	Parameters . . . . .	4
2.1.4	Events . . . . .	4
2.2	Compared Parameters . . . . .	5
2.3	Aspect . . . . .	6
2.4	Star Slots . . . . .	9
2.4.1	Slot 3 . . . . .	9
2.4.2	Slot 4 . . . . .	10
2.4.3	Slot 5 . . . . .	11
2.4.4	Slot 6 . . . . .	12
2.4.5	Slot 7 . . . . .	13
2.5	FID Slots . . . . .	14
2.5.1	Slot 0 . . . . .	14
2.5.2	Slot 1 . . . . .	15
2.5.3	Slot 2 . . . . .	16
<b>A</b>	<b>Summary</b>	<b>17</b>
A.1	Status . . . . .	17
A.2	Comments . . . . .	17

# 1 Front

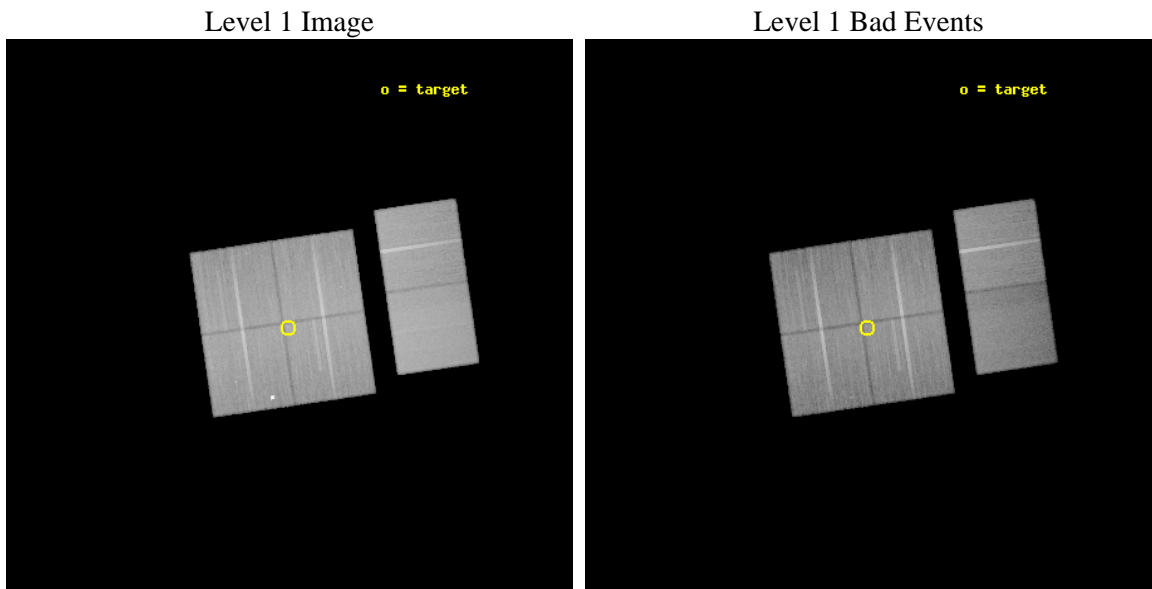
seq_num	200615	Sequence number
obs_id	10983	Observation id
title	Revealing the ``missing' low-mass stars in the S255/S257 star forming region	Proposal title
observer	Prof. Dr. Thomas Preibisch	Principal investigator
object	S255/S257	Source name
dtycycle	0	&#160
cycle	P	events from which exps? Prim/Second/Both
ra_targ	93.225	Observer's specified target RA [deg]
dec_targ	17.99	Observer's specified target Dec [deg]
ra_nom	93.223675376329	Nominal RA [deg]
dec_nom	17.997993802644	Nominal Dec [deg]
roll_nom	81.709092522969	Nominal Roll [deg]
revision	3	Processing version of data
ontime	40579.19984889	Sum of GTIs [s]
livetime	40065.361586543	Livetime [s]
ontime0	40579.19984889	Sum of GTIs [s]
ontime1	40579.19984889	Sum of GTIs [s]
ontime2	40579.19984889	Sum of GTIs [s]
ontime3	40579.19984889	Sum of GTIs [s]
ontime6	40579.19984889	Sum of GTIs [s]
ontime7	40579.19984889	Sum of GTIs [s]
l2events	339347	Number of level 2 events



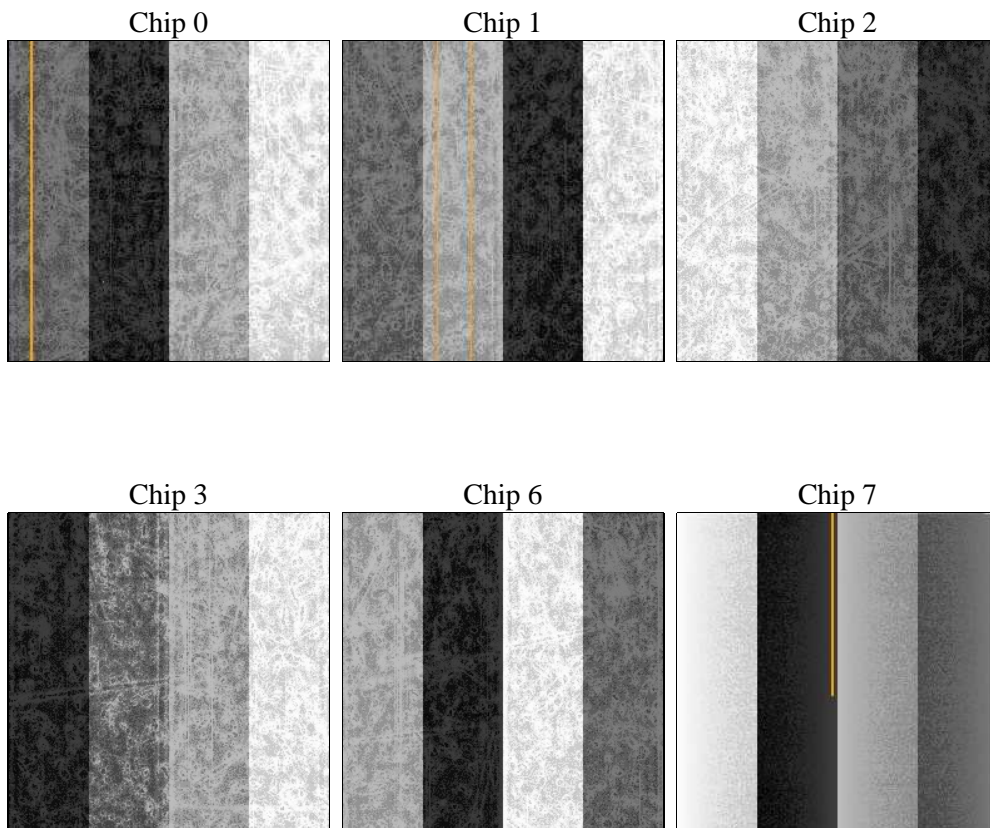
## 2 OBI

### 2.1 OBI

#### 2.1.1 Images



#### 2.1.2 Bias



### 2.1.3 Parameters

obi_num	1	Obi number	sched_exp_time	40424.000000	[s] Scheduled observation exposure time
ascdsver	8.4.5	Processing system revision	ontime	40579.19984889	Sum of GTIs [s]
caldbver	4.4.10	&#160	ontime0	40579.19984889	Sum of GTIs [s]
date	2012-06-16T17:22:59	Date and time of file creation	ontime1	40579.19984889	Sum of GTIs [s]
revision	3	Processing version of data	ontime2	40579.19984889	Sum of GTIs [s]
			ontime3	40579.19984889	Sum of GTIs [s]
			ontime6	40579.19984889	Sum of GTIs [s]
			ontime7	40579.19984889	Sum of GTIs [s]
			l1events	2216622	Number of level 1 events

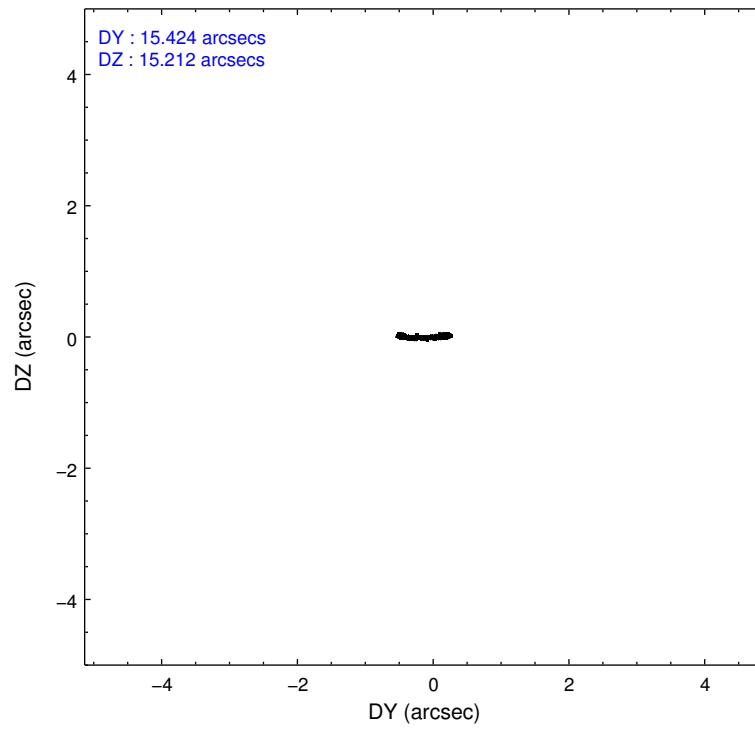
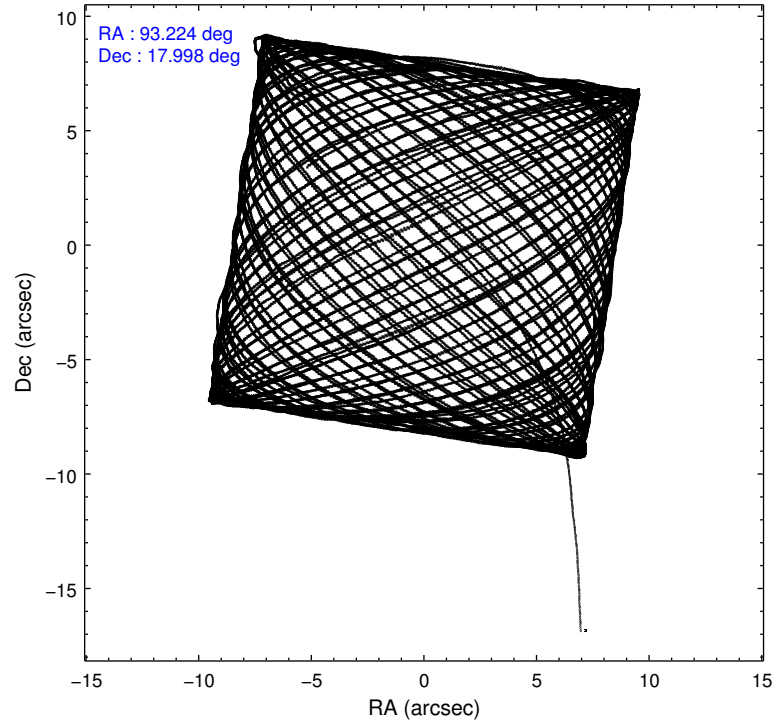
### 2.1.4 Events

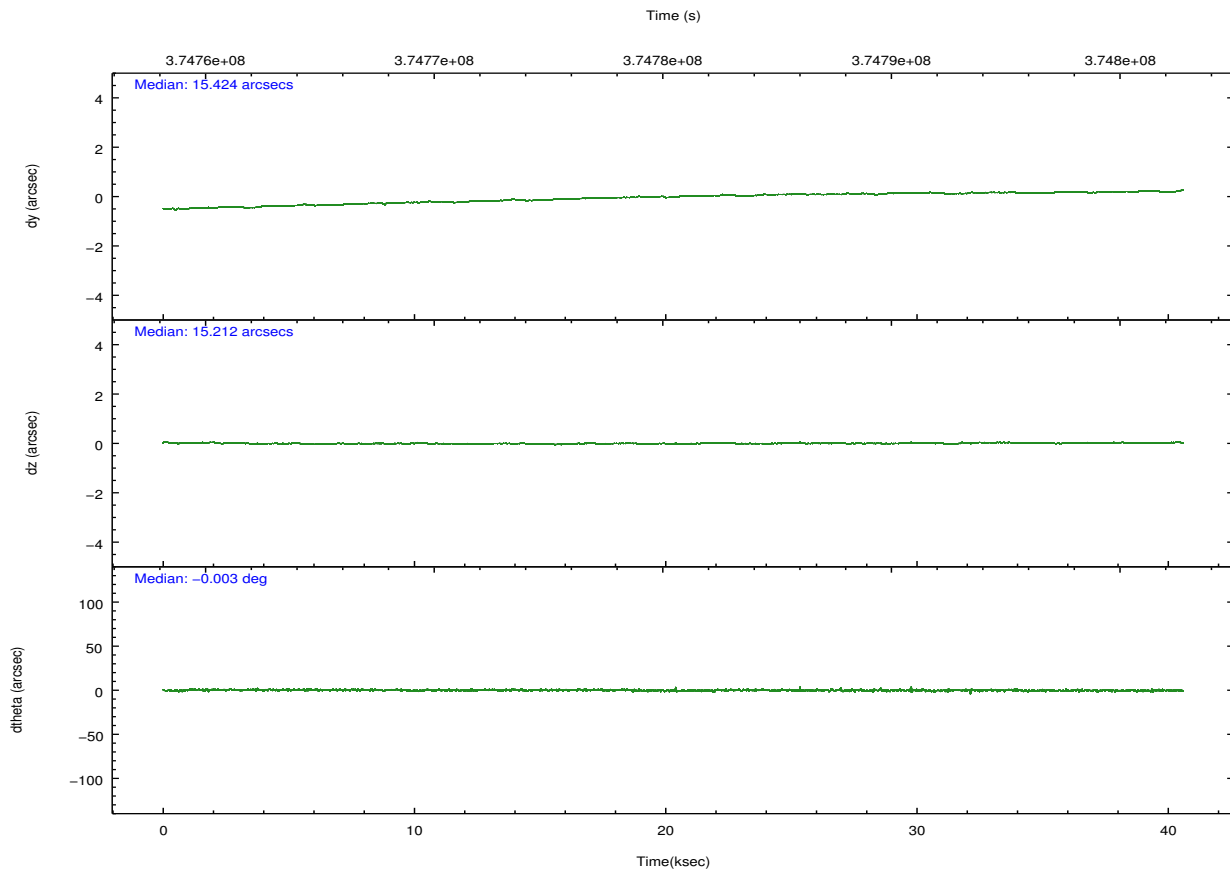
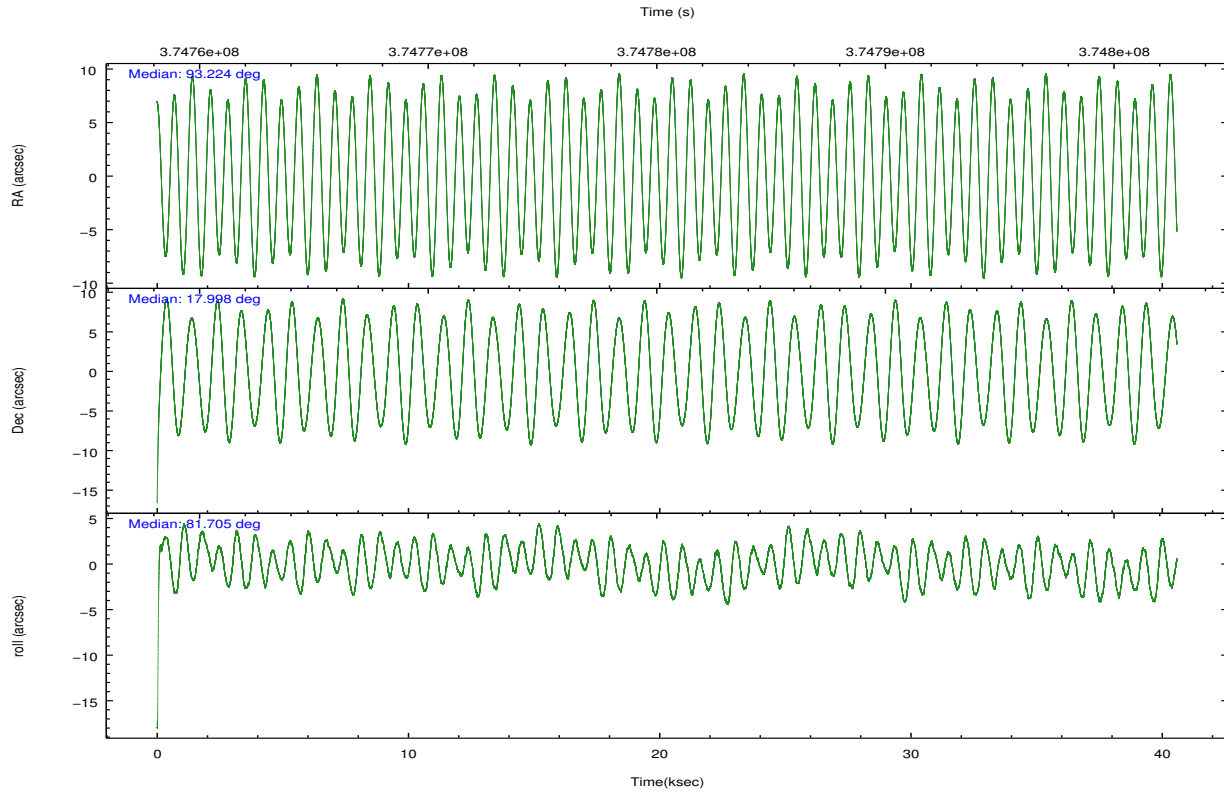
	ccd 0	ccd 1	ccd 2	ccd 3	ccd 6	ccd 7		ccd 0	ccd 1	ccd 2	ccd 3	ccd 6	ccd 7
level 1 events	335595	354421	375182	357954	374295	419175	grade 0 events	13235	27771	13491	14019	13242	17115
rejected events	298664	301155	338822	321470	336616	232846		3%	7%	3%	3%	3%	4%
rejected %	88%	84%	90%	89%	89%	55%	grade 1 events	196	278	219	233	185	586
								0%	0%	0%	0%	0%	0%
							grade 2 events	9317	9481	8932	8067	8681	38956
								2%	2%	2%	2%	2%	9%
							grade 3 events	4117	4282	3879	3869	4066	16951
								1%	1%	1%	1%	1%	4%
							grade 4 events	3834	4289	3954	3909	3995	17025
								1%	1%	1%	1%	1%	4%
							grade 5 events	13312	14516	12700	15275	15454	43691
								3%	4%	3%	4%	4%	10%
							grade 6 events	7141	8478	6811	7329	8472	99989
								2%	2%	1%	2%	2%	23%
							grade 7 events	284443	285326	325196	305253	320200	184862
								84%	80%	86%	85%	85%	44%

## 2.2 Compared Parameters

Parameter	Planned	Actual	Parameter	Planned	Actual
Instrument	ACIS	ACIS	Obspar format version number	7	7
Detector	ACIS-012367	ACIS-012367	Obspar file type	PREDICTED	ACTUAL
Grating	NONE	NONE	Obspar update status	NONE	UPDATED
Data mode	FAINT	FAINT	CCD I0 on	Y	Y
Observation mode	POINTING	POINTING	CCD I1 on	Y	Y
[deg] Pointing RA	93.234480	93.22367537632887	CCD I2 on	Y	Y
[deg] Pointing Dec	17.972473	17.99799380264449	CCD I3 on	Y	Y
[deg] Pointing Roll	81.497077	81.70909252296919	CCD S0 on	N	N
[mm] SIM focus pos	-0.782348	-0.7809083437167272	CCD S1 on	N	N
[mm] SIM defocus	0	0.001439871863259334	CCD S2 on	O1	Y
[mm] SIM translation stage pos	-233.592463	-233.5874344608287	CCD S3 on	O2	Y
[mm] SIM translation stage offset	0	-0.005018542100998502	CCD S4 on	N	N
[s] Observation start time (MET)	374760319.184000	374758848.51319	CCD S5 on	N	N
Observation start date	2009-11-16T12:04:13	2009-11-16T11:40:48	Number of optional ACIS chips dropped	0	0
[s] Observation end time (MET)	374800743.184000	374801708.37785	On-chip summing requested	N	N
Observation end date	2009-11-16T23:17:57	2009-11-16T23:35:08	Subarray requested	NONE	NONE
Read mode	TIMED	TIMED	Alternating exposures requested	N	N
			[s] Primary exposure time	0.000000	3.2

## 2.3 Aspect



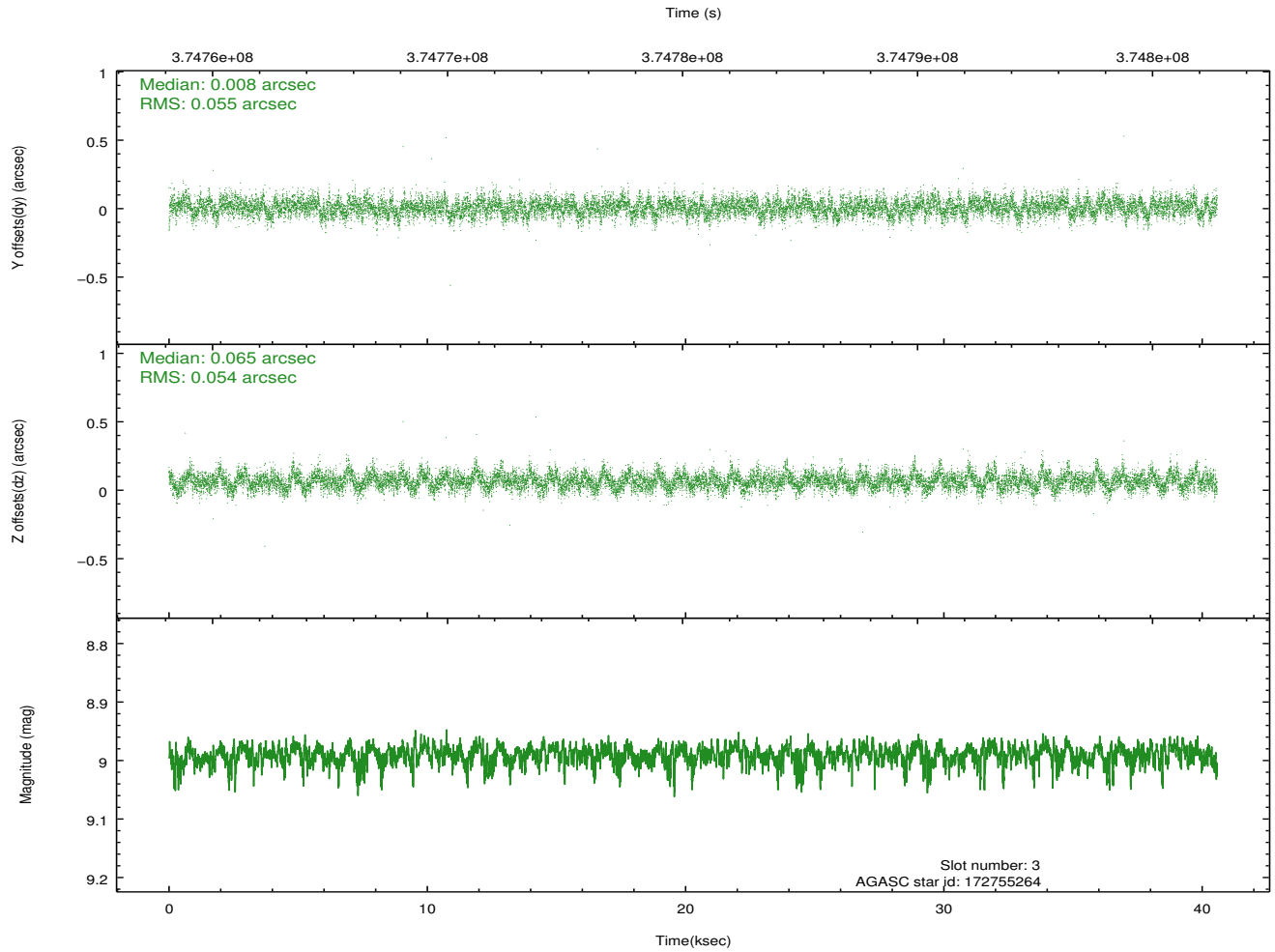
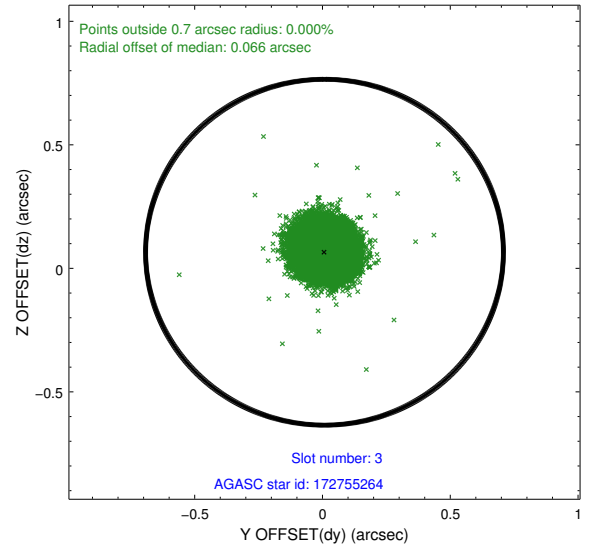
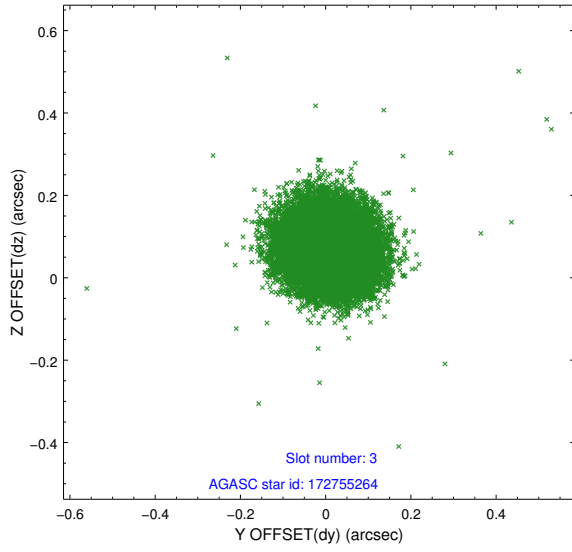


### Slot Statistics

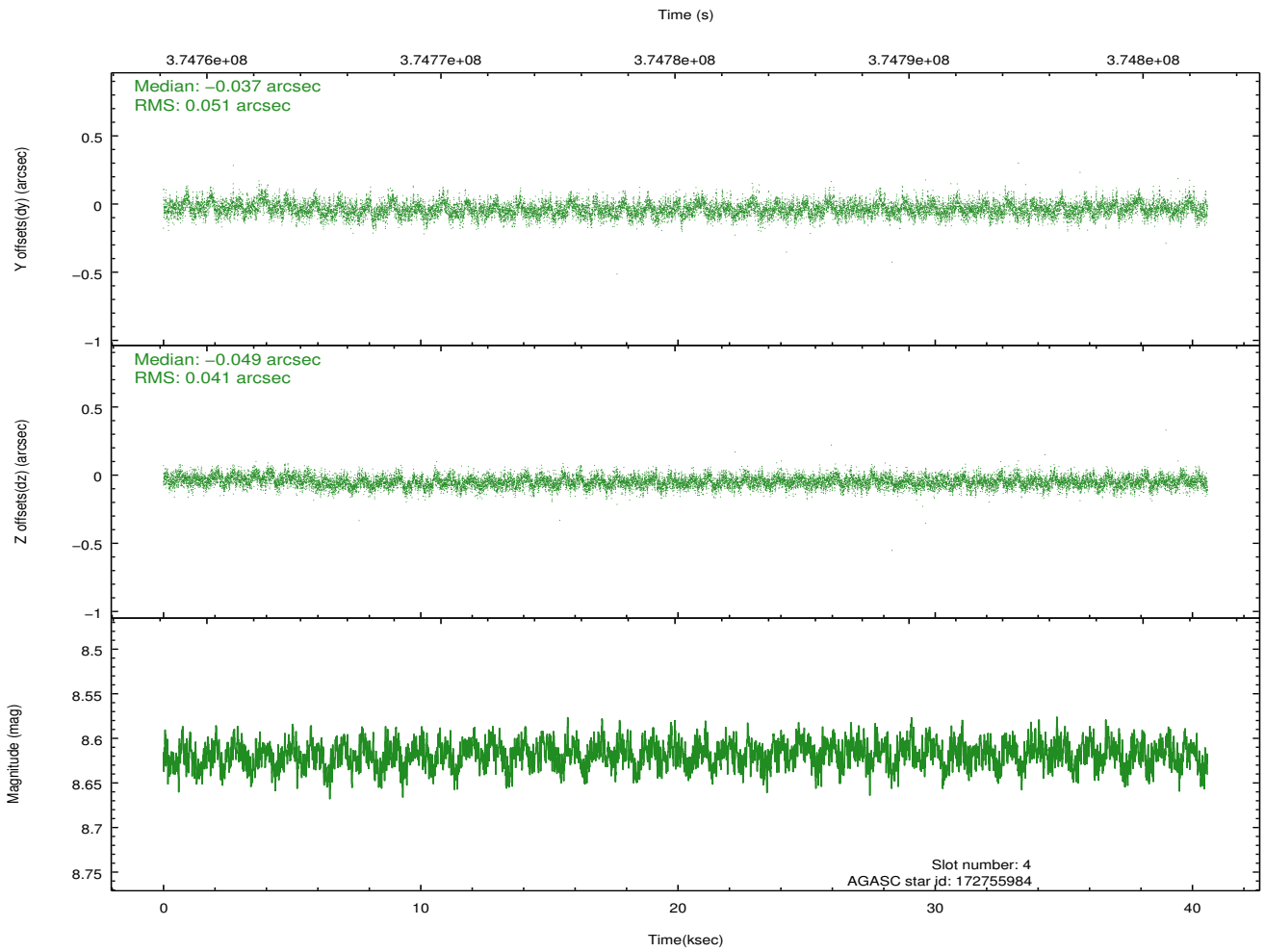
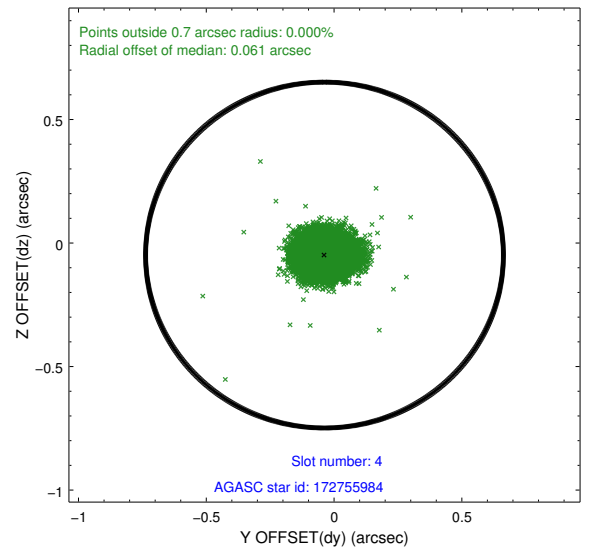
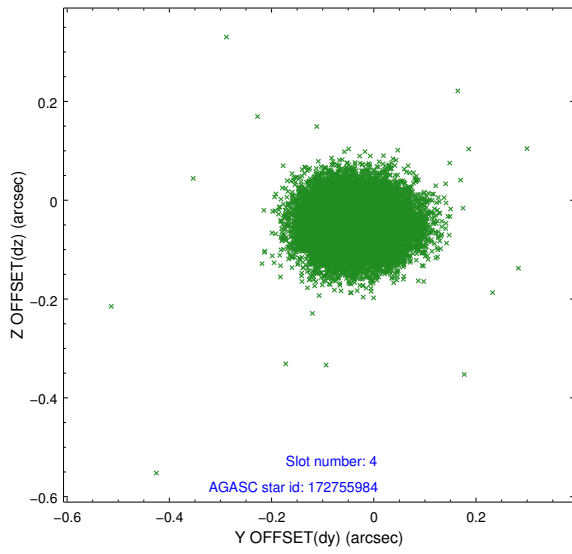
slot	status	id	mag	n_pts	med_dy	med_dz	dr1	dr2	ra	dec	mean_y	mean_z
0	FID	ACIS-I-2	6.96	9897	-0.078	-0.078	0.011	0.024	0.000000	0.000000	-770.15	-845.28
1	FID	ACIS-I-4	6.98	9897	0.166	0.069	0.009	0.033	0.000000	0.000000	2144.11	1061.09
2	FID	ACIS-I-5	7.04	9897	-0.190	0.077	0.011	0.024	0.000000	0.000000	-1824.11	1058.89
3	GUIDE	172755264	8.99	19782	0.008	0.065	0.082	0.133	93.435791	18.400978	1627.90	-451.73
4	GUIDE	172755984	8.62	19787	-0.037	-0.049	0.068	0.114	92.677336	18.702783	2322.27	2268.39
5	GUIDE	172756704	8.24	19791	0.020	-0.188	0.074	0.115	93.028352	17.756938	-871.58	584.04
6	GUIDE	172756792	8.48	19787	0.129	0.103	0.058	0.094	93.226946	17.362403	-2175.69	-299.14
7	GUIDE	172759816	9.18	19780	-0.121	0.067	0.084	0.134	93.600394	18.248853	1170.25	-1089.81

## 2.4 Star Slots

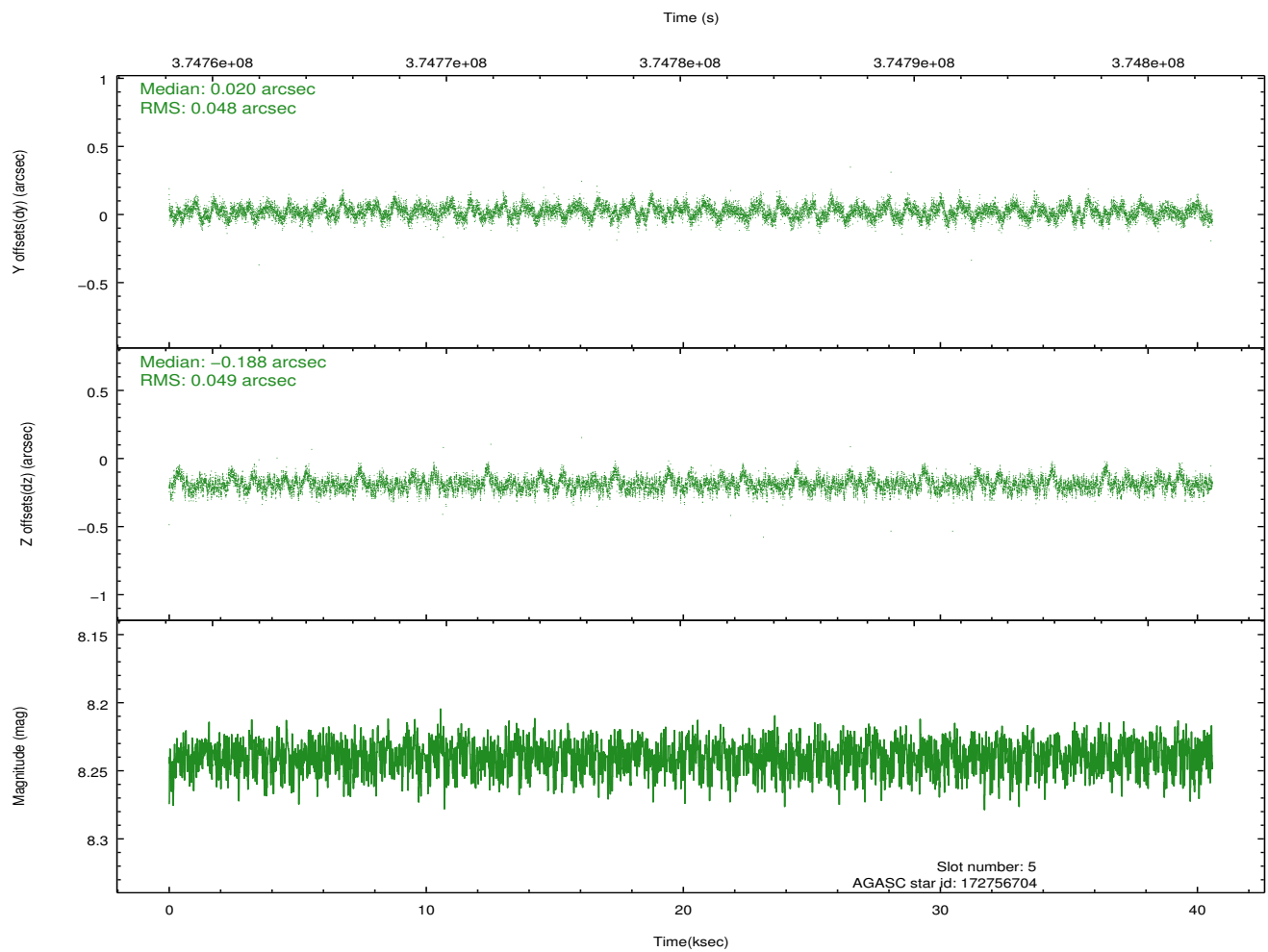
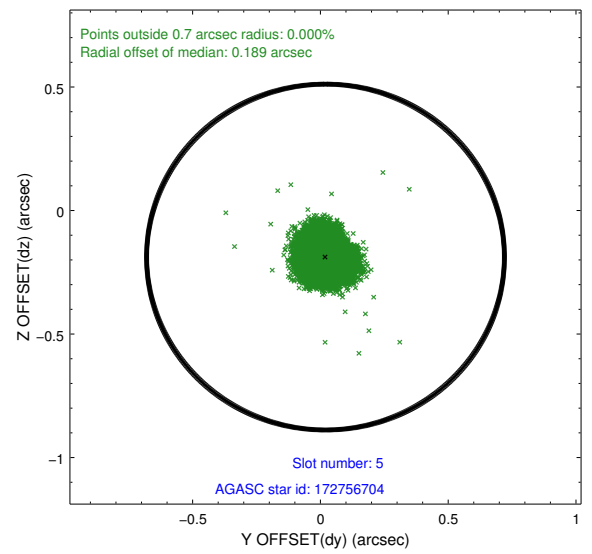
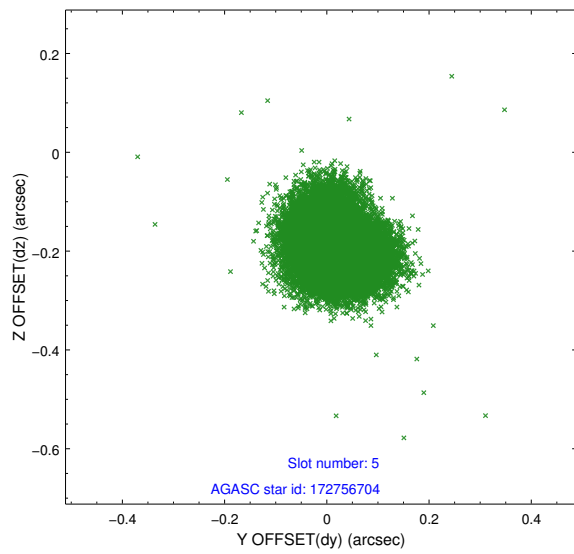
### 2.4.1 Slot 3



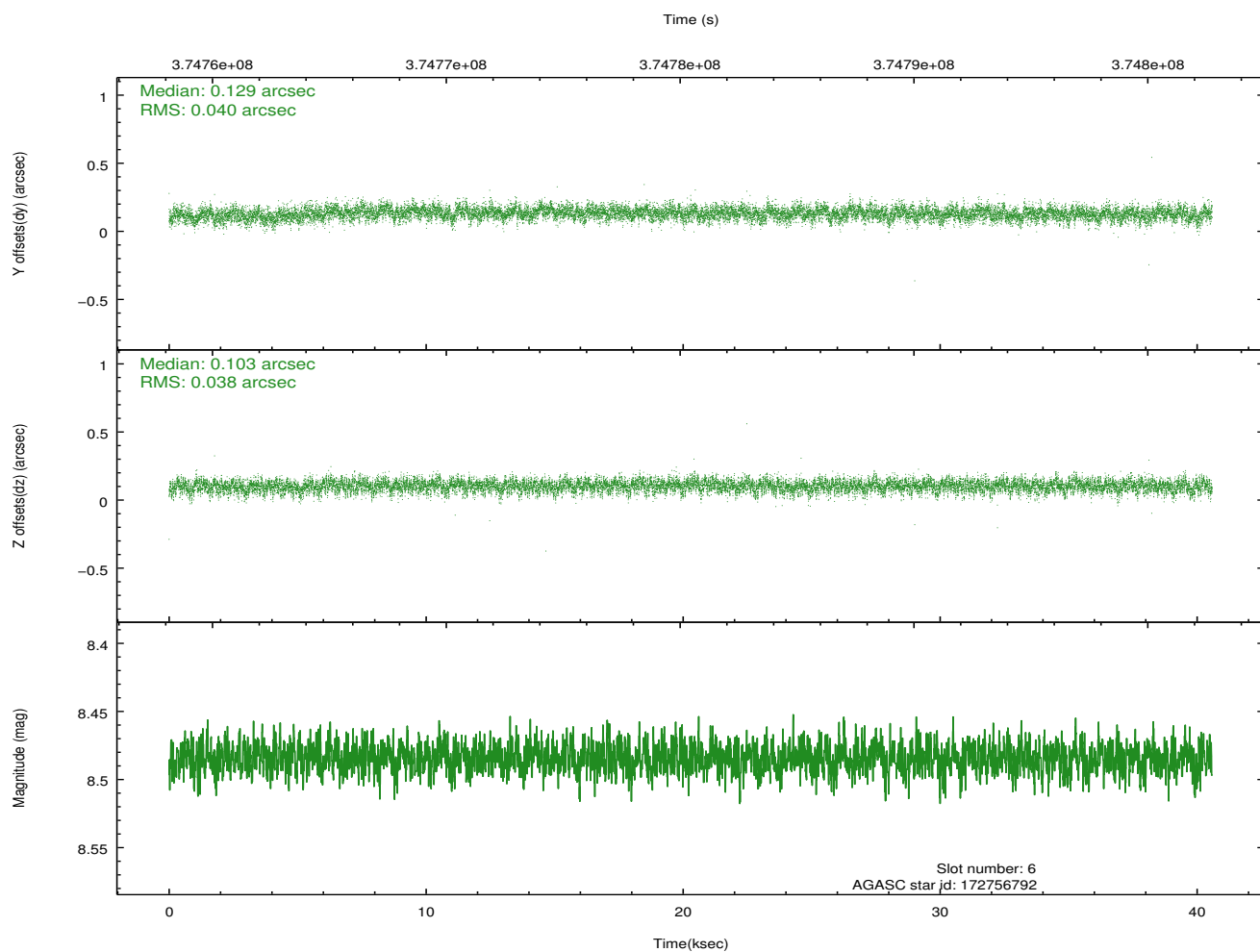
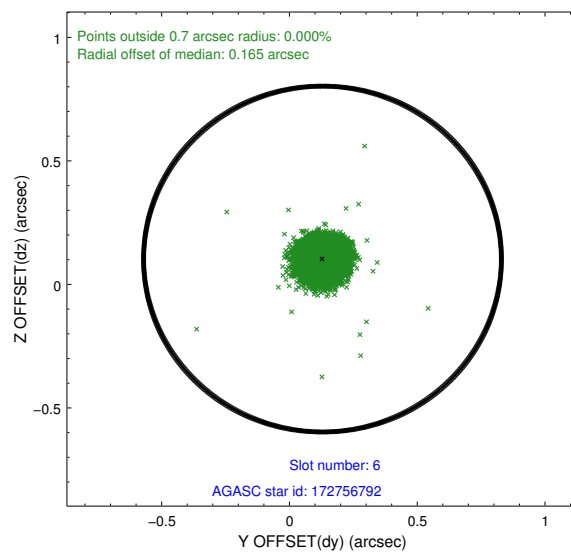
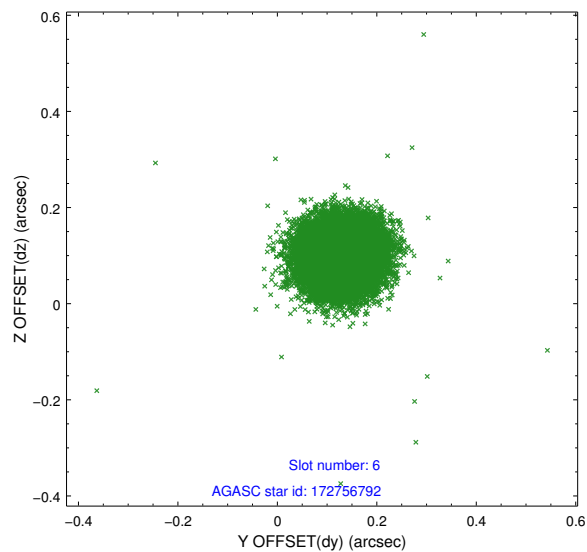
### 2.4.2 Slot 4



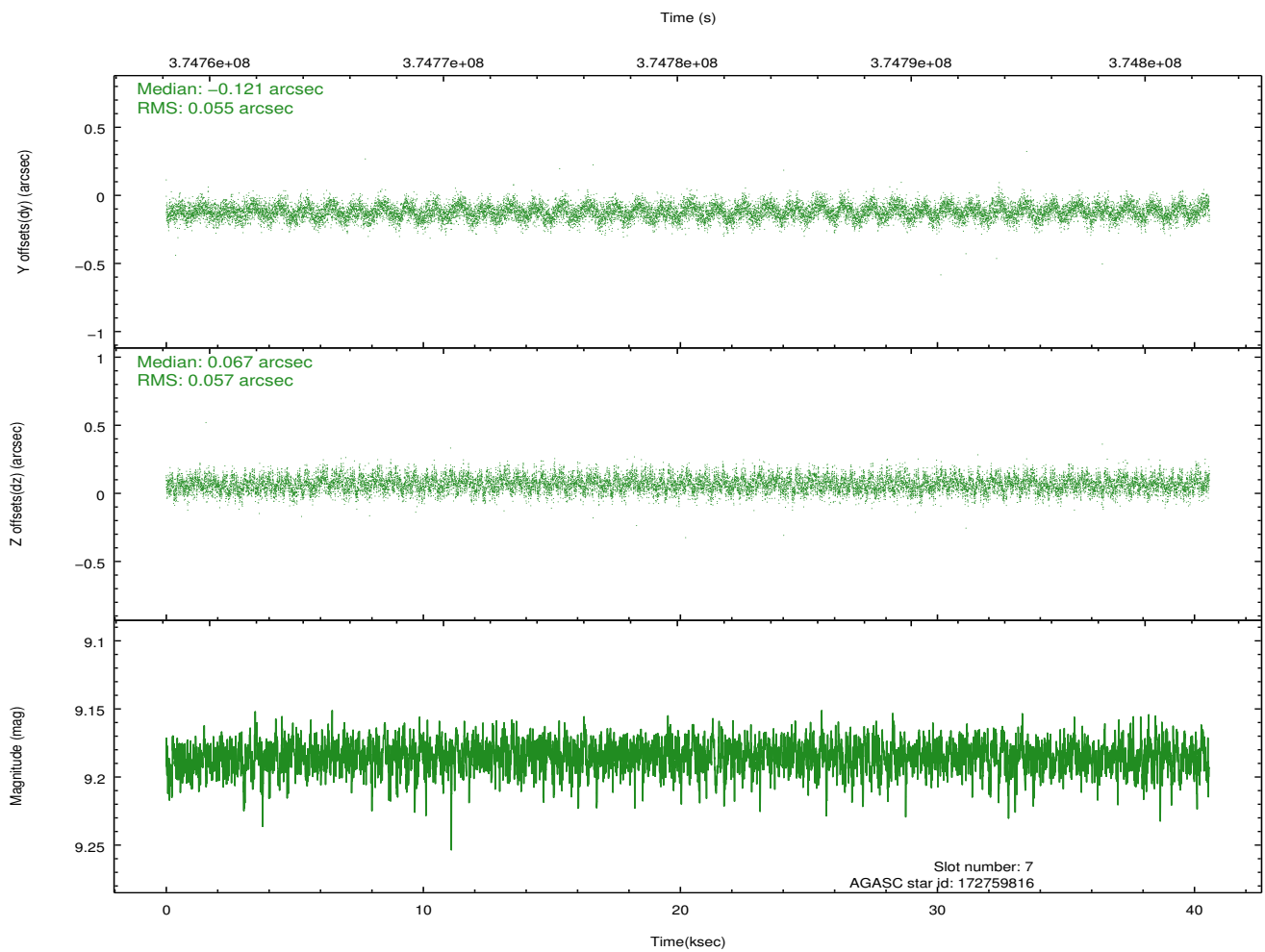
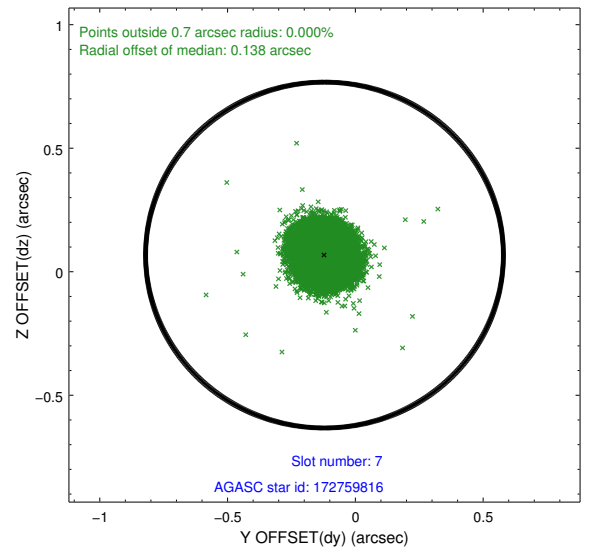
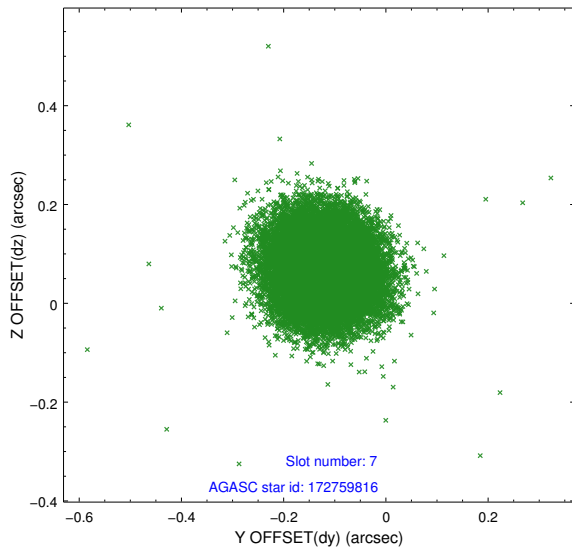
### 2.4.3 Slot 5



## 2.4.4 Slot 6

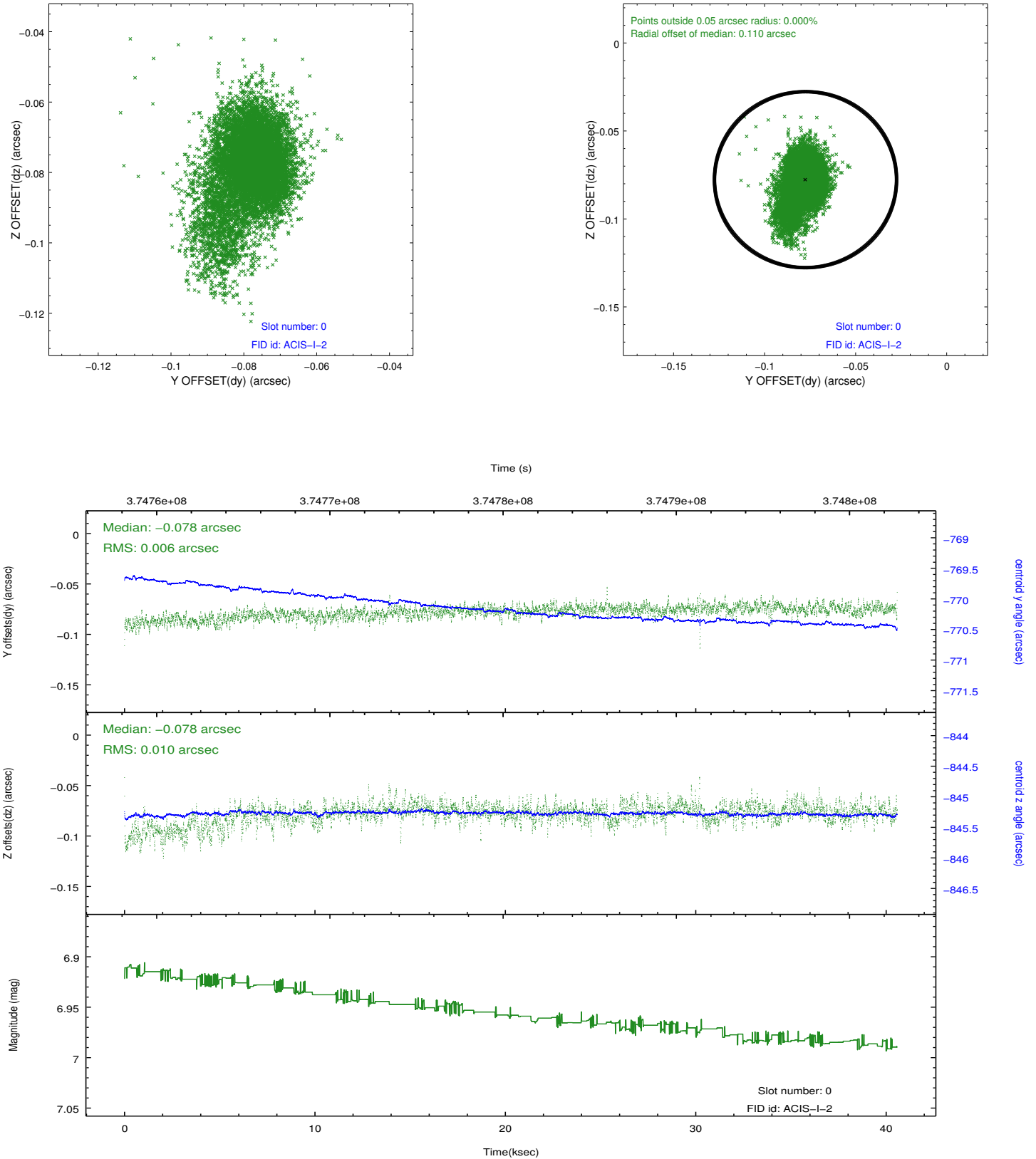


## 2.4.5 Slot 7

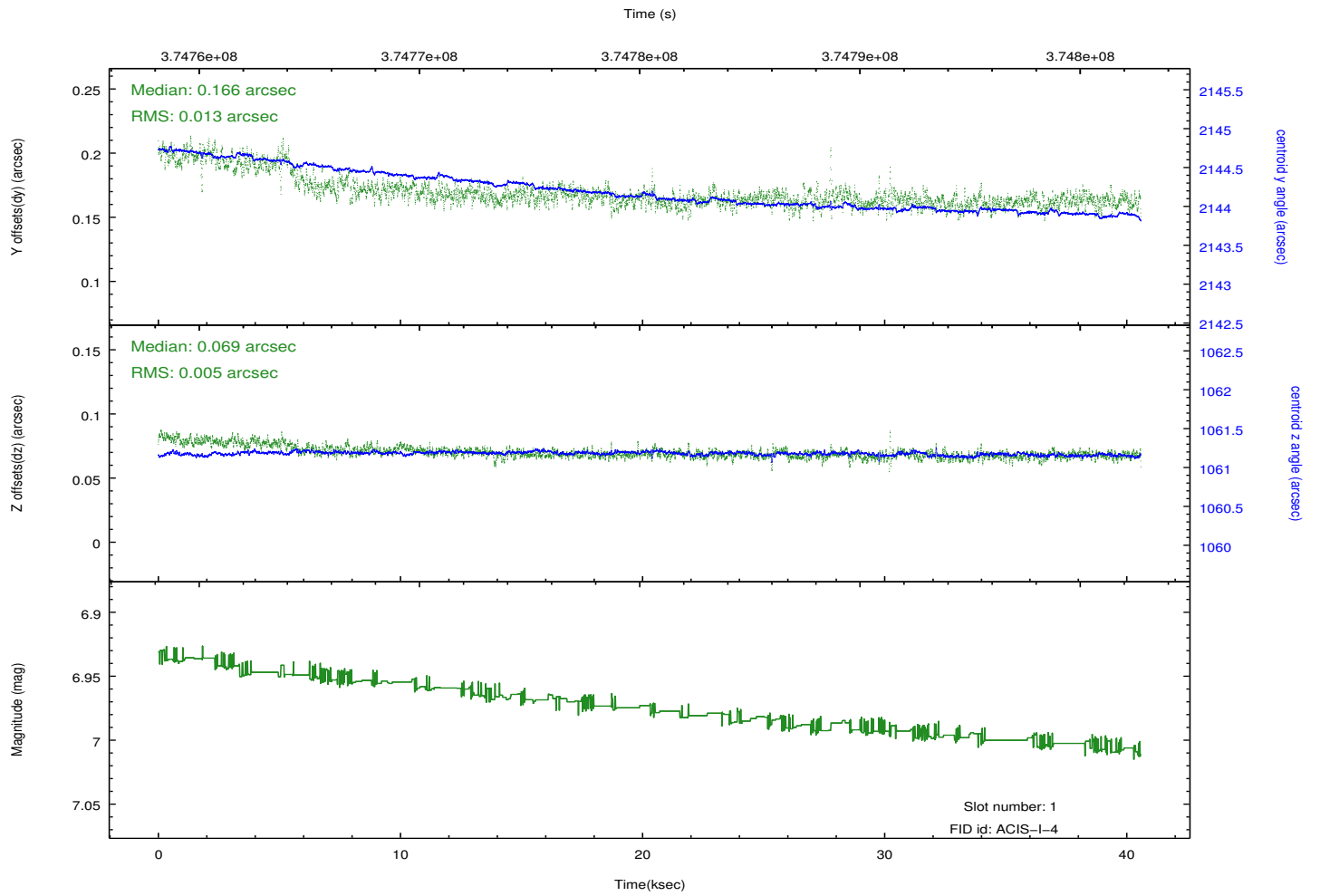
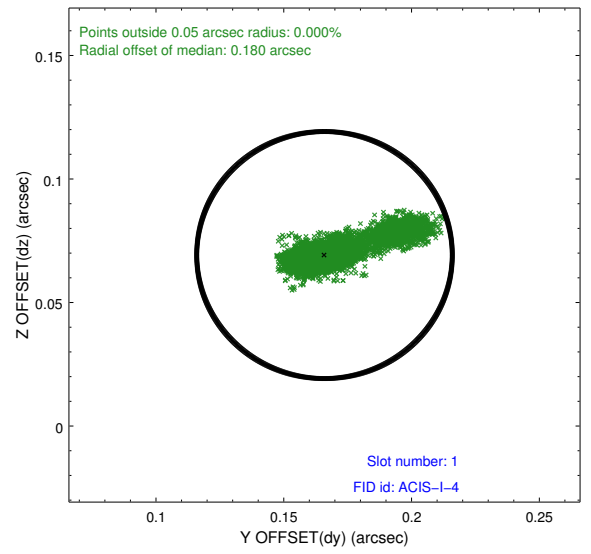
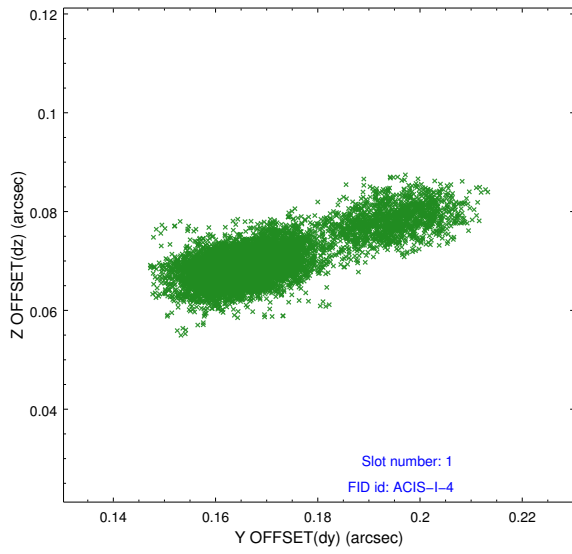


## 2.5 FID Slots

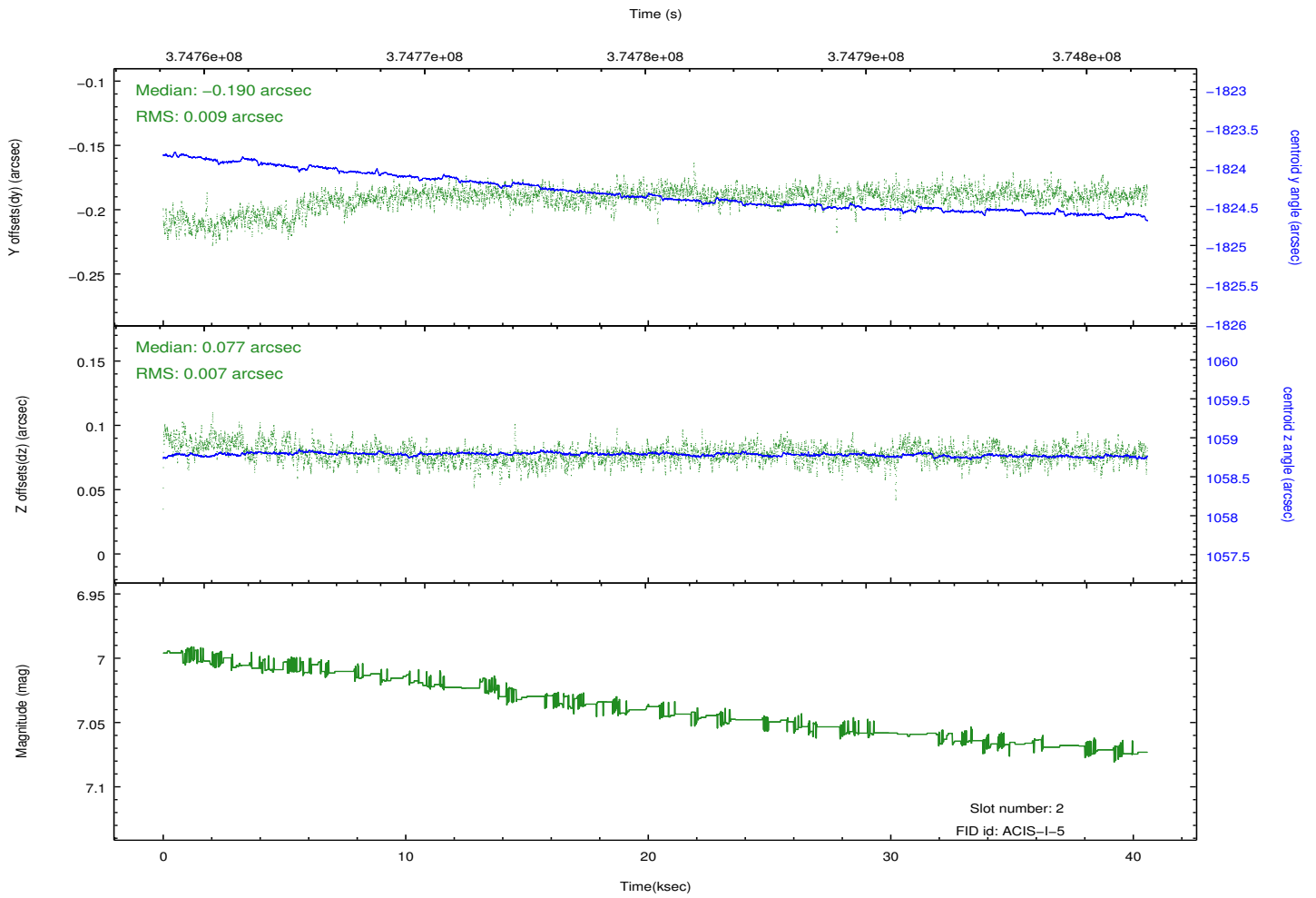
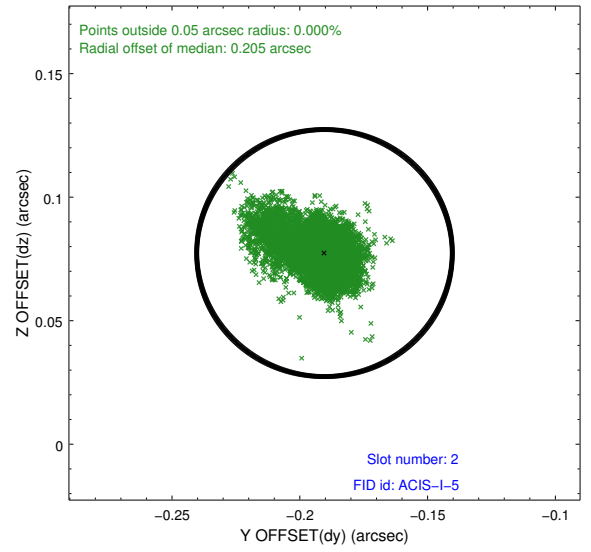
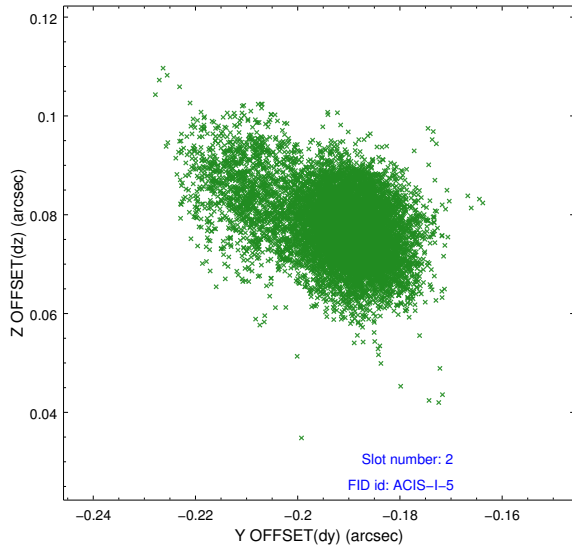
### 2.5.1 Slot 0



## 2.5.2 Slot 1



### 2.5.3 Slot 2



# A Summary

## A.1 Status

V&V Scientist	Jen Lauer
V&V Date (YYYY-MM-DD)	2012.06.20
V&V Edition	1
V&V Disposition and Status	OK
V&V Charge Time	40.5791998

## A.2 Comments