

V&V Reference Report

L2 ASCDS Version : 8.3.3.1

Observation 1463 - L2 Version 6
Chandra X-Ray Center

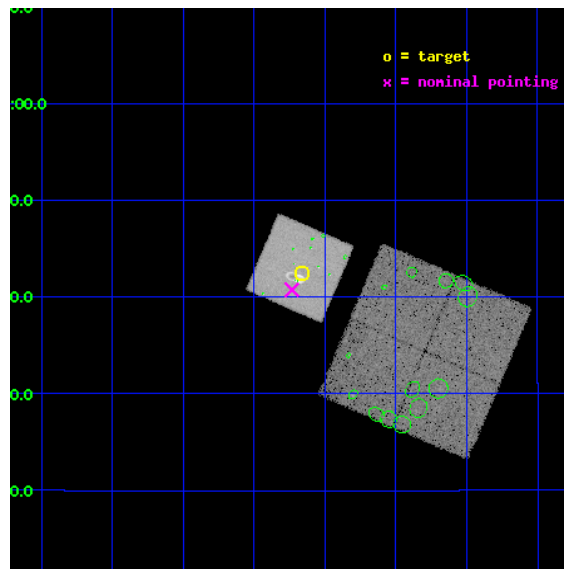
L2 Processing Date : Dec 7 2010

Contents

1	Front	2
2	OBI	3
2.1	OBI	3
2.1.1	Images	3
2.1.2	Bias	3
2.1.3	Parameters	4
2.1.4	Events	4
2.2	Compared Parameters	5
2.3	Aspect	6
2.4	Star Slots	9
2.4.1	Slot 3	9
2.4.2	Slot 4	10
2.4.3	Slot 5	11
2.4.4	Slot 6	12
2.4.5	Slot 7	13
2.5	FID Slots	14
2.5.1	Slot 0	14
2.5.2	Slot 1	15
2.5.3	Slot 2	16
3	Point Sources	17
A	Summary	18
A.1	Status	18
A.2	Comments	18

1 Front

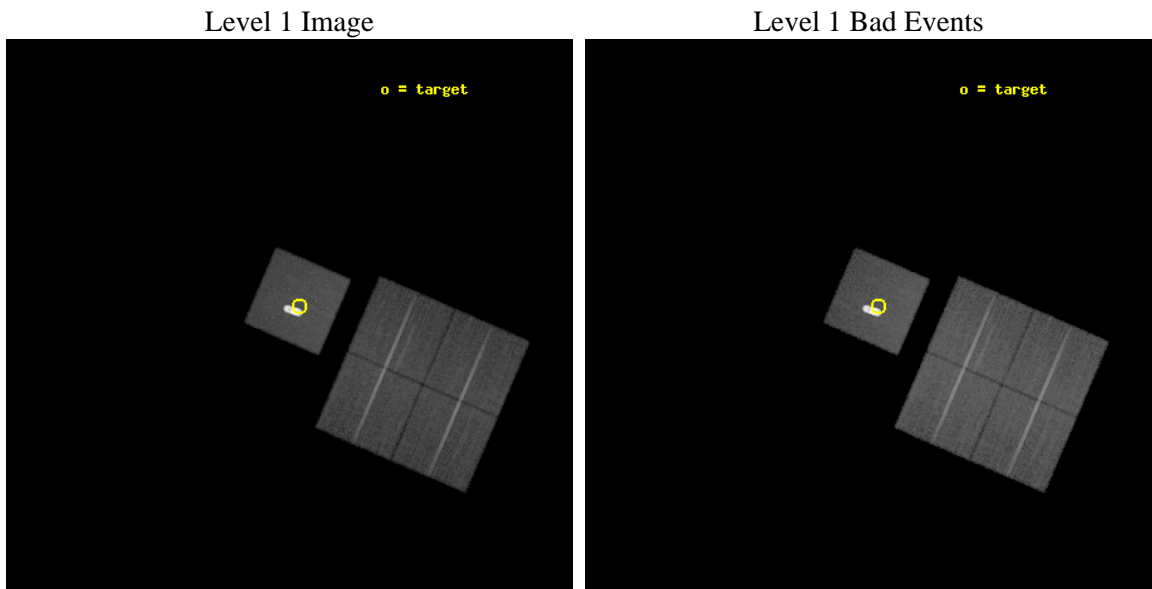
seq_num	100010	Sequence number
obs_id	1463	Observation id
title	 	Proposal title
observer	DR. J WAITE	Principal investigator
object	JUPITER	Source name
dtcycle	0	
cycle	P	events from which exps? Prim/Second/Both
ra_targ	24.66589	Observer's specified target RA
dec_targ	8.707	Observer's specified target Dec
ra_nom	24.683353518381	Nominal RA
dec_nom	8.6789043512024	Nominal Dec
roll_nom	293.3287257637	Nominal Roll
revision	6	Processing version of data
ontime	22367.877150118	Sum of GTIs [s]
livetime	22084.641621325	Livetime [s]
ontime0	22374.359050624	Sum of GTIs [s]
ontime1	22374.359050624	Sum of GTIs [s]
ontime2	22371.1180804	Sum of GTIs [s]
ontime3	22364.626398586	Sum of GTIs [s]
ontime7	22367.877150118	Sum of GTIs [s]
l2events	148986	Number of level 2 events



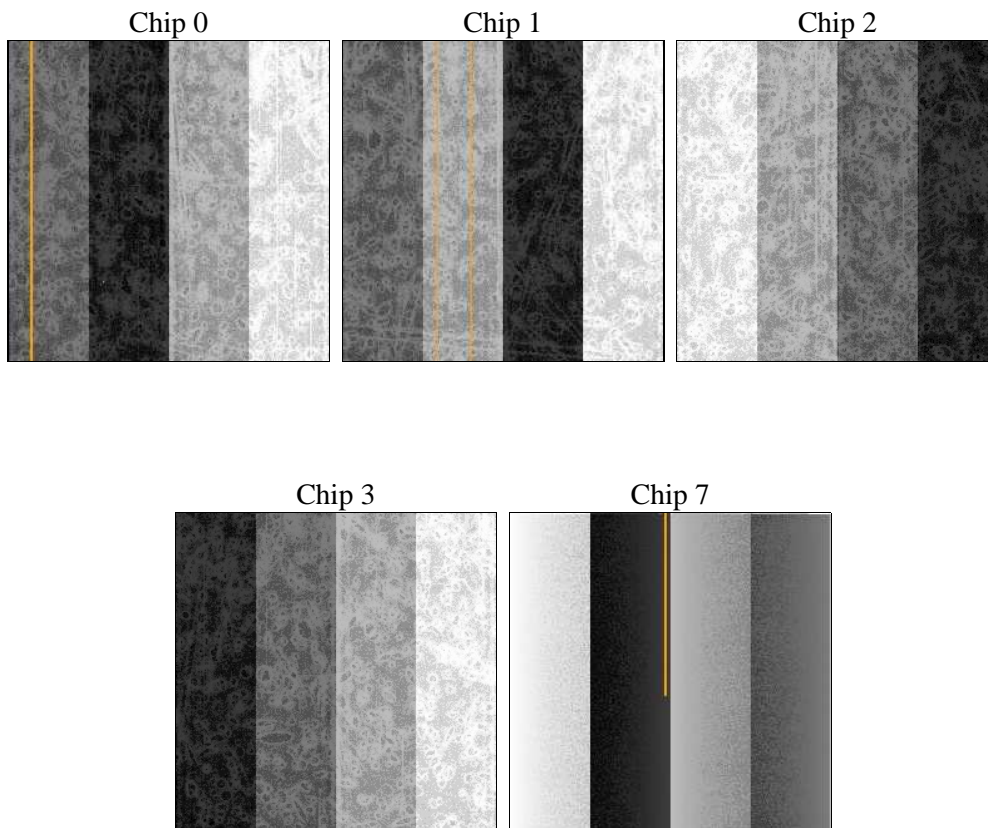
2 OBI

2.1 OBI

2.1.1 Images



2.1.2 Bias



2.1.3 Parameters

obi_num	0	Obi number	sched_exp_time	22600.000000	Scheduled observation exposure time
ascdsver	8.3.3.1	ASCDS version number	ontime	22367.877150118	Sum of GTIs [s]
caldbver	4.4.0	 	ontime0	22374.359050624	Sum of GTIs [s]
date	2010-12-08T00:16:08	Date and time of file creation	ontime1	22374.359050624	Sum of GTIs [s]
revision	4	Processing version of data	ontime2	22371.1180804	Sum of GTIs [s]
			ontime3	22364.626398586	Sum of GTIs [s]
			ontime7	22367.877150118	Sum of GTIs [s]
			l1events	1956471	Number of level 1 events

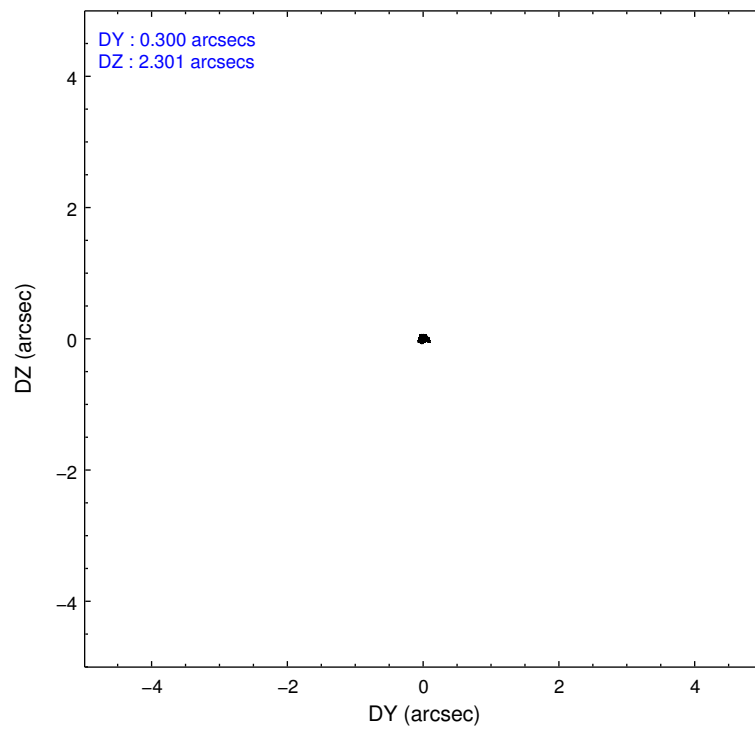
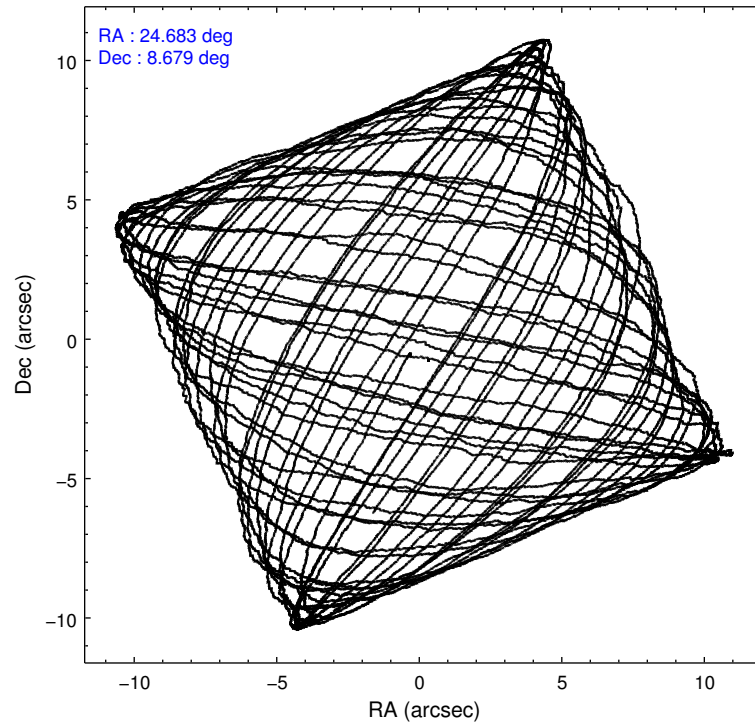
2.1.4 Events

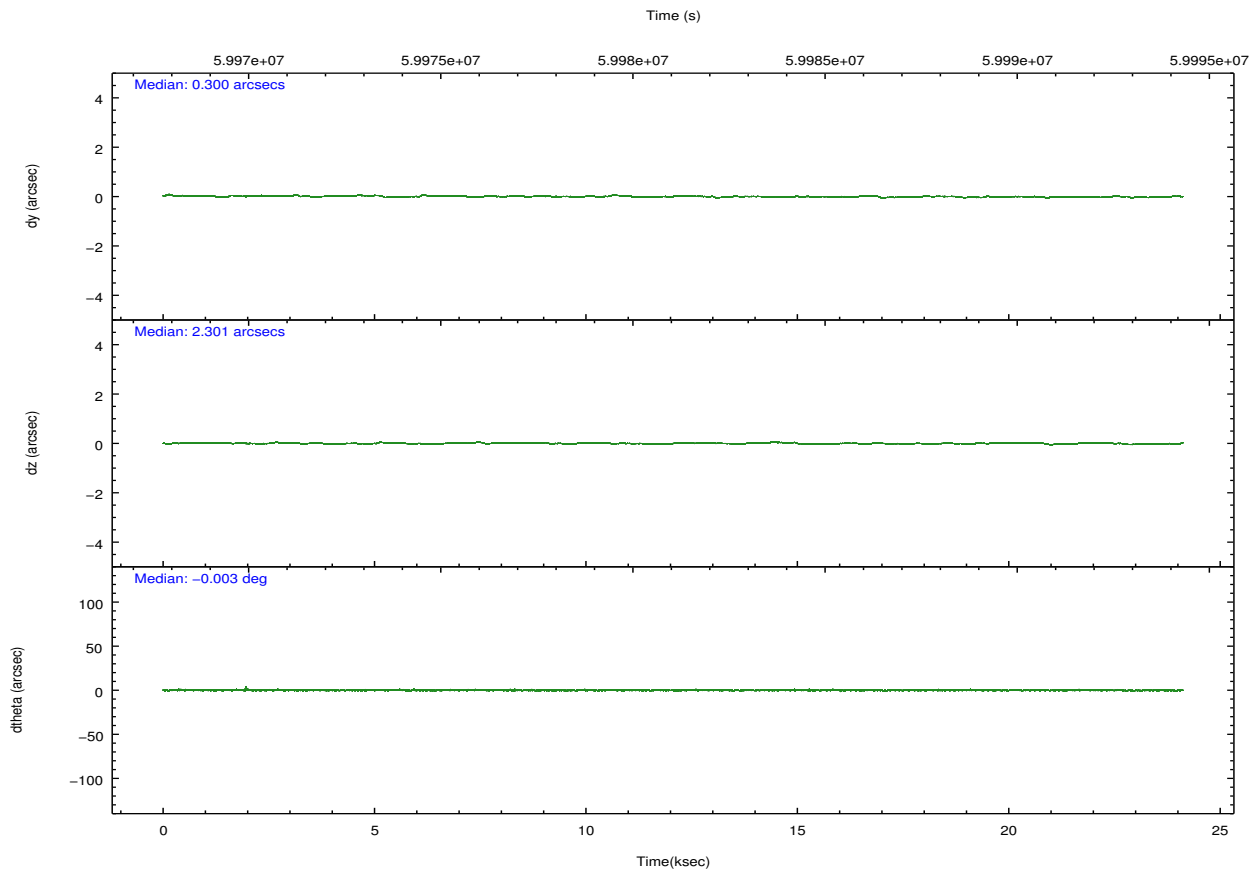
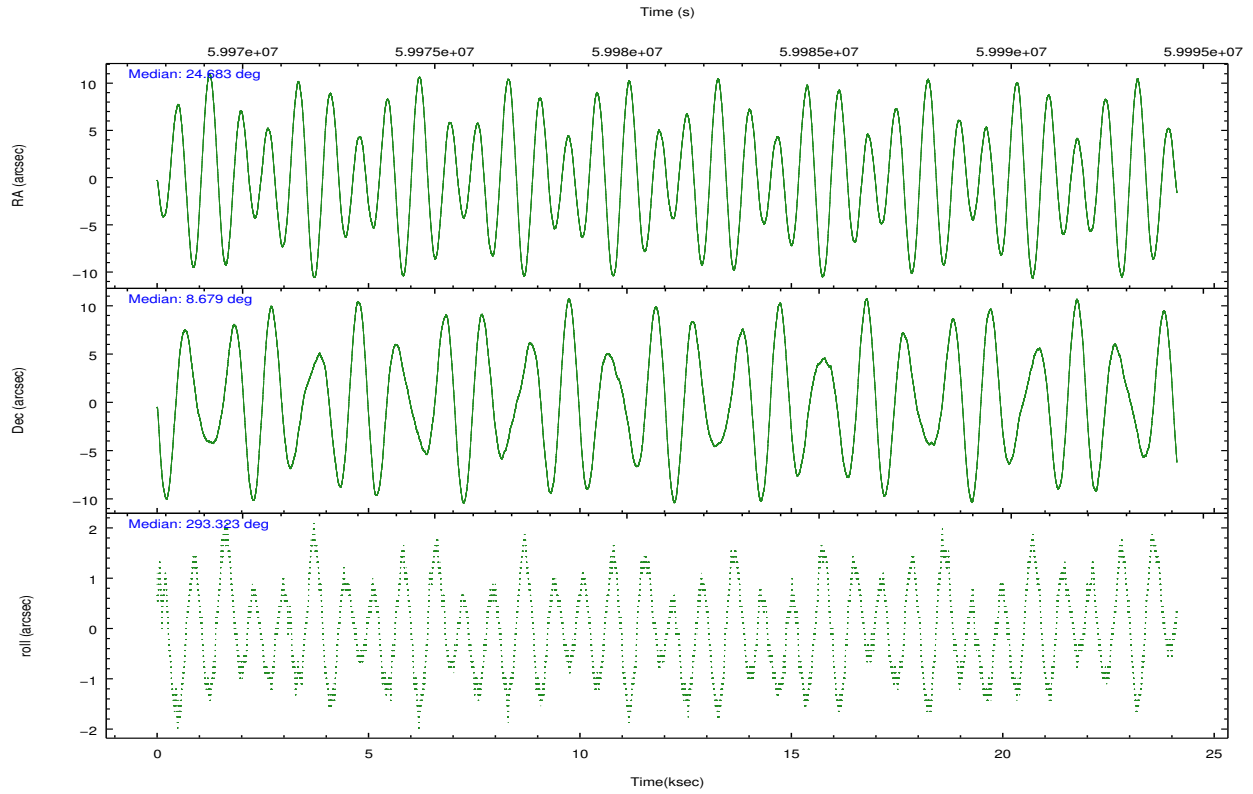
	ccd 0	ccd 1	ccd 2	ccd 3	ccd 7		ccd 0	ccd 1	ccd 2	ccd 3	ccd 7
level 1 events	180558	181698	192289	188537	1213389	grade 0 events	4424	4274	3676	3655	5919
rejected events	161862	162491	175205	170938	1125566		2%	2%	1%	1%	0%
rejected %	89%	89%	91%	90%	92%	grade 1 events	41	37	35	38	4394
							0%	0%	0%	0%	0%
						grade 2 events	7094	7119	6662	7103	18650
							3%	3%	3%	3%	1%
						grade 3 events	1388	1551	1235	1162	5649
							0%	0%	0%	0%	0%
						grade 4 events	1345	1433	1179	1104	5243
							0%	0%	0%	0%	0%
						grade 5 events	3675	3989	3230	3482	22078
							2%	2%	1%	1%	1%
						grade 6 events	4449	4835	4334	4576	52391
							2%	2%	2%	2%	4%
						grade 7 events	158142	158460	171938	167417	1099065
							87%	87%	89%	88%	90%

2.2 Compared Parameters

Parameter	Planned	Actual	Parameter	Planned	Actual
Instrument	ACIS	ACIS	Obspar format version number	6	6
Detector	ACIS-01237	ACIS-01237	Obspar file type	PREDICTED	ACTUAL
Grating	NONE	NONE	Obspar update status	NONE	UPDATED
Data mode	FAINT	FAINT	Number of optional ACIS chips dropped	0	0
Observation mode	POINTING	POINTING	On-chip summing requested	N	N
Pointing RA	24.661034	24.68335351838077	Subarray requested	NONE	NONE
Pointing Dec	8.695450	8.678904351202448	Alternating exposures requested	N	N
Pointing Roll	293.175465	293.3287257637022	Primary exposure time	0.000000	3.2
Window start time	59969464.184000	59969464.184000			
Window stop time	59992084.184000	59992084.184000			
SIM focus pos (mm)	-0.684267	-0.6828225247311905			
SIM defocus (mm)	0	0.001444936568705701			
SIM translation stage pos (mm)	-190.132523	-190.1400660498719			
SIM translation stage offset (mm)	0	0.00754346686406393			
Observation start time	59969464.184000	59968797.485557			
Observation start date	1999-11-26T02:10:00	1999-11-26T01:59:57			
Observation end time	59992064.184000	59993398.511446			
Observation end date	1999-11-26T08:26:40	1999-11-26T08:49:58			
Read mode	TIMED	TIMED			

2.3 Aspect



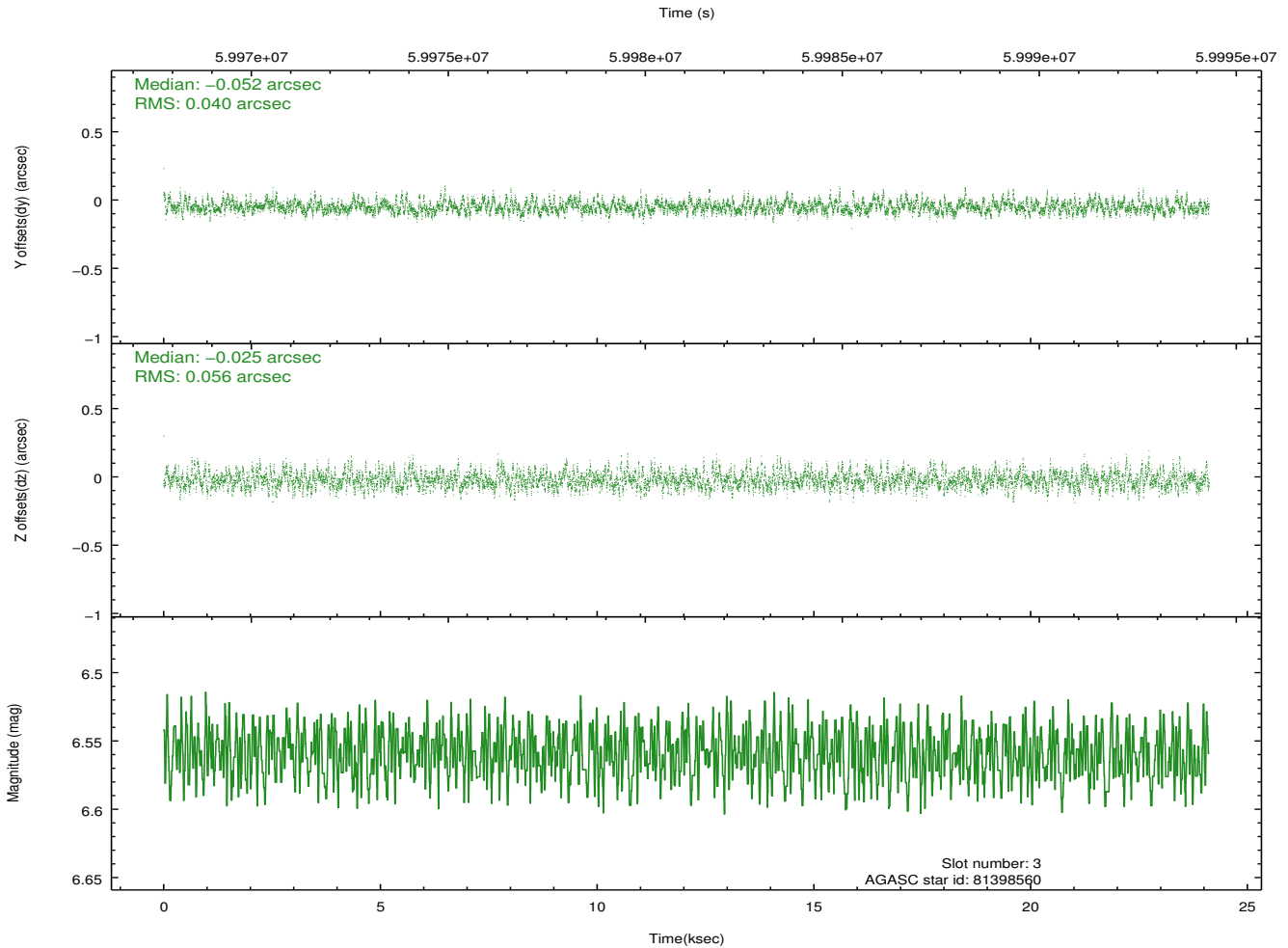
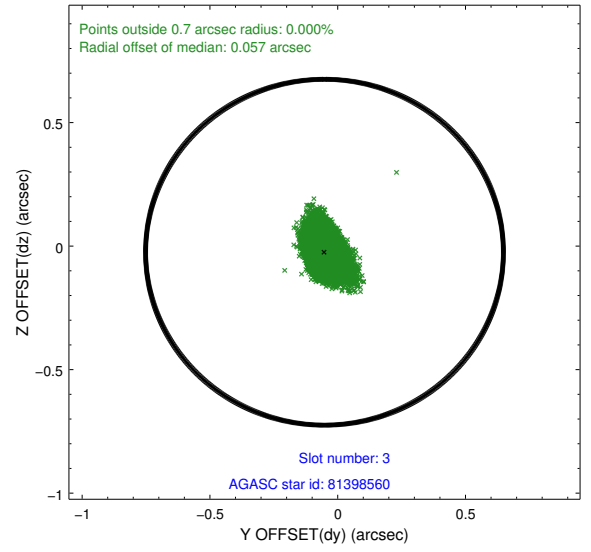
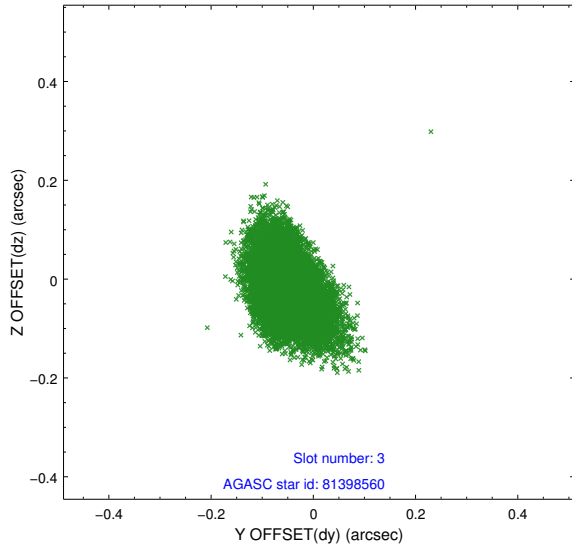


Slot Statistics

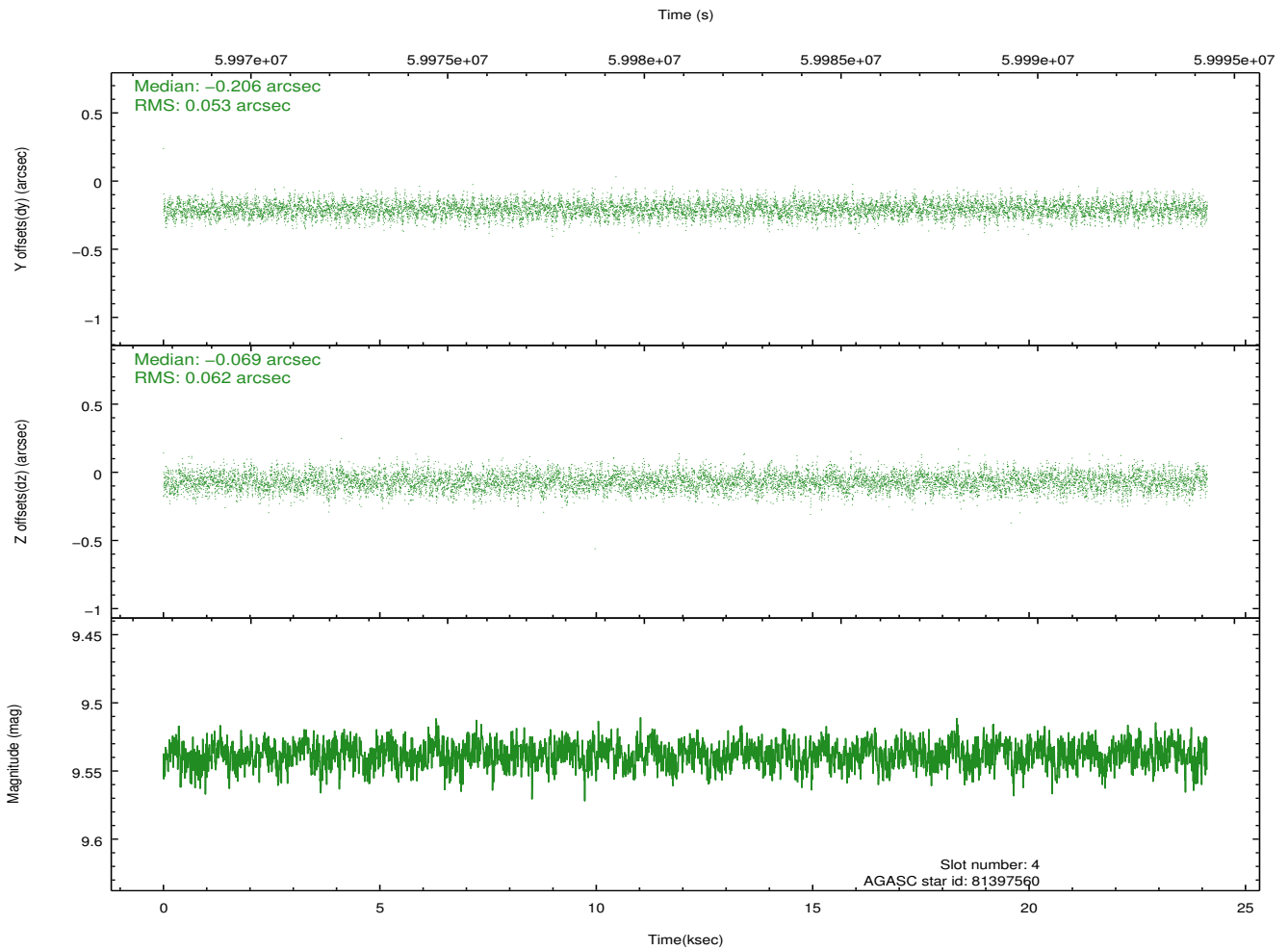
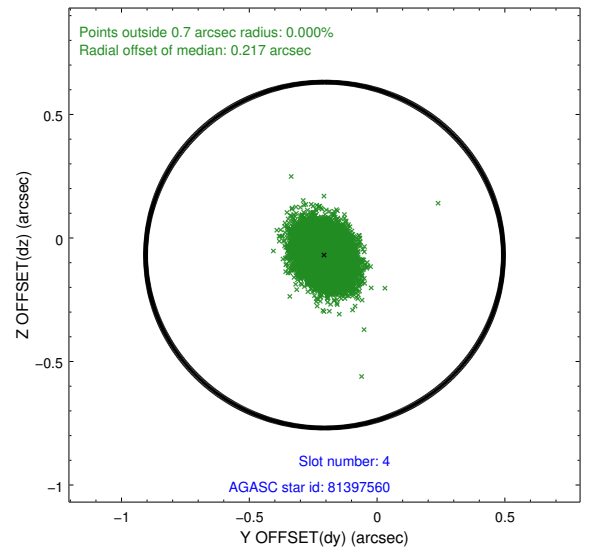
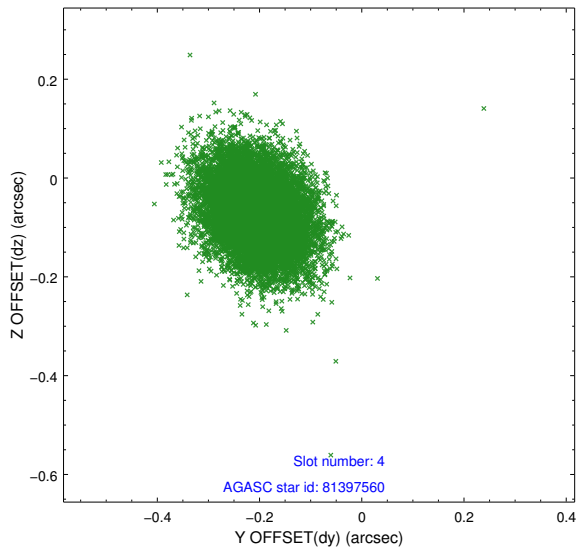
slot	status	id	mag	n_pts	med_dy	med_dz	dr1	dr2	ra	dec	mean_y	mean_z
0	FID	ACIS-S-2	7.12	11759	-0.011	-0.010	0.006	0.010	0.000000	0.000000	-752.92	-1723.33
1	FID	ACIS-S-4	7.22	11758	0.057	0.008	0.005	0.010	0.000000	0.000000	2160.47	185.12
2	FID	ACIS-S-5	7.24	11760	-0.077	0.011	0.006	0.011	0.000000	0.000000	-1805.80	178.87
3	GUIDE	81398560	6.56	11757	-0.052	-0.025	0.071	0.123	25.145528	8.760778	461.18	1677.57
4	GUIDE	81397560	9.54	11745	-0.206	-0.069	0.085	0.140	24.004098	8.965422	-1814.54	-1764.60
5	GUIDE	81398056	9.20	11752	0.068	0.075	0.099	0.161	25.259975	8.764958	606.99	2058.01
6	GUIDE	81401848	9.57	11745	-0.034	-0.040	0.087	0.147	24.221068	8.860999	-1164.28	-1203.95
7	GUIDE	81403240	9.61	11755	0.226	0.058	0.100	0.162	24.738374	8.119294	2015.63	-562.90

2.4 Star Slots

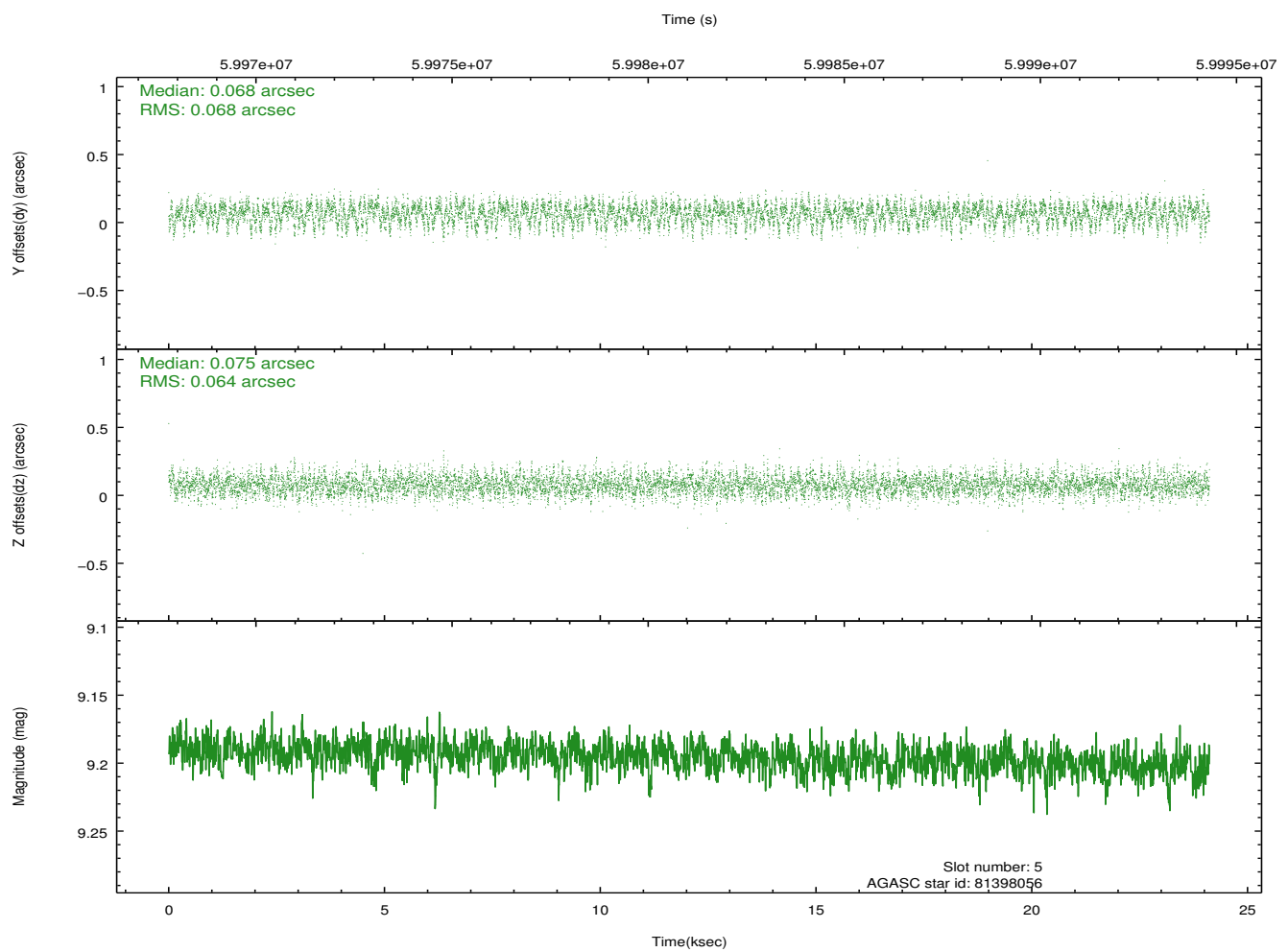
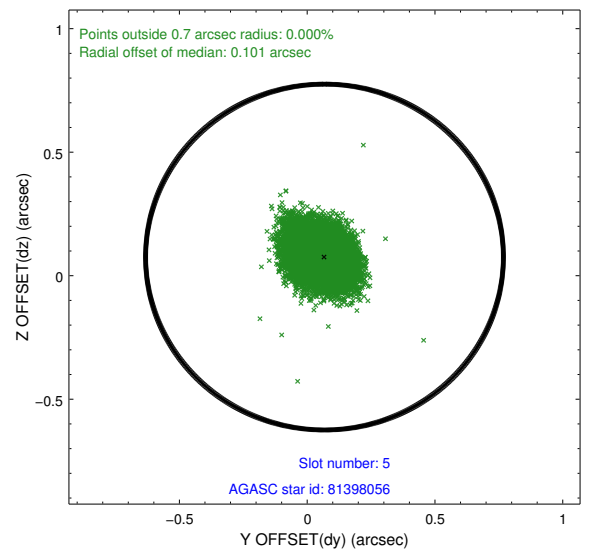
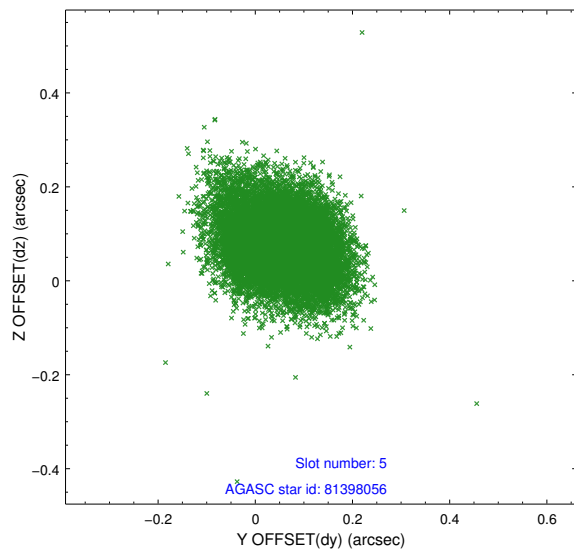
2.4.1 Slot 3



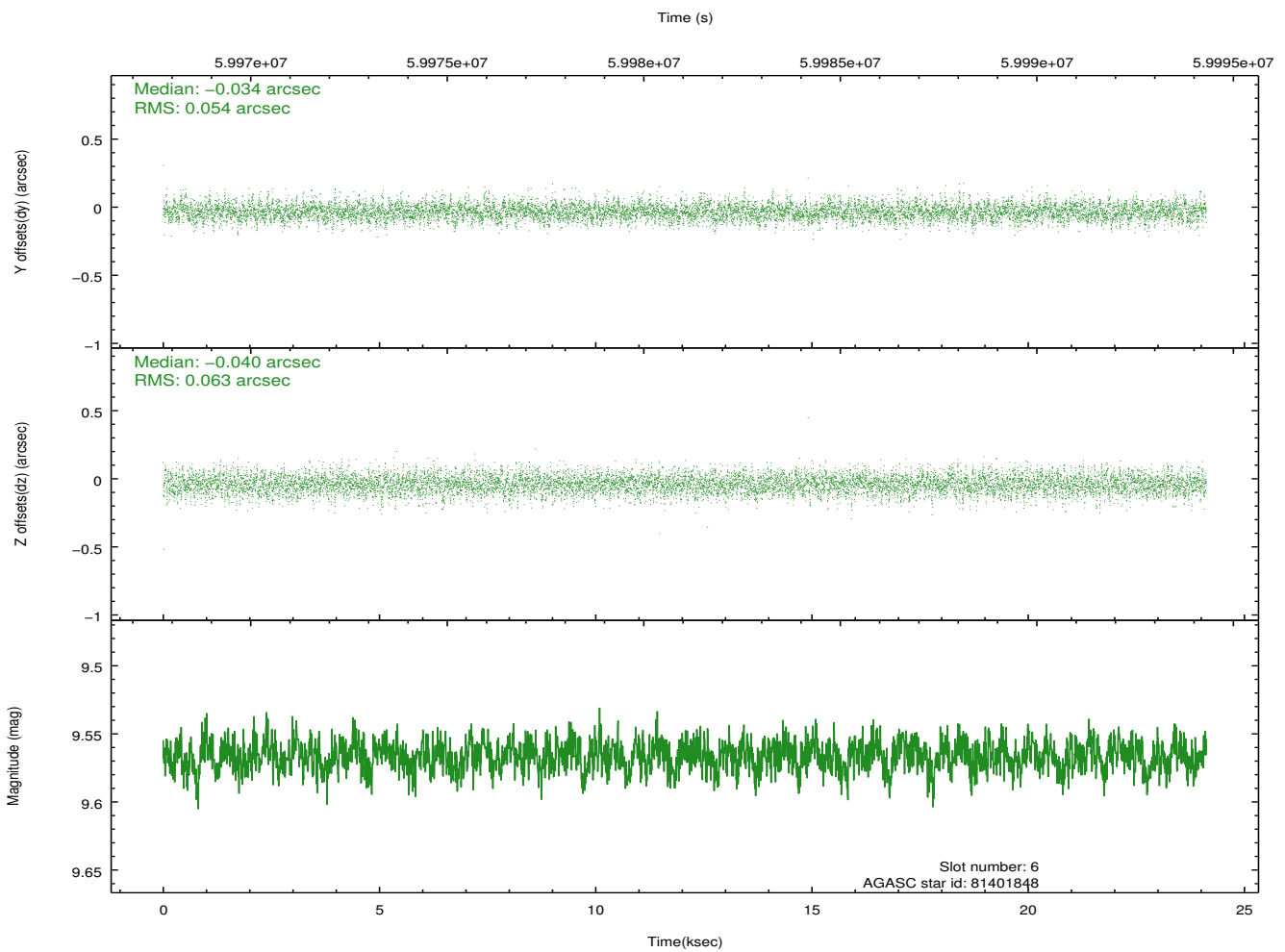
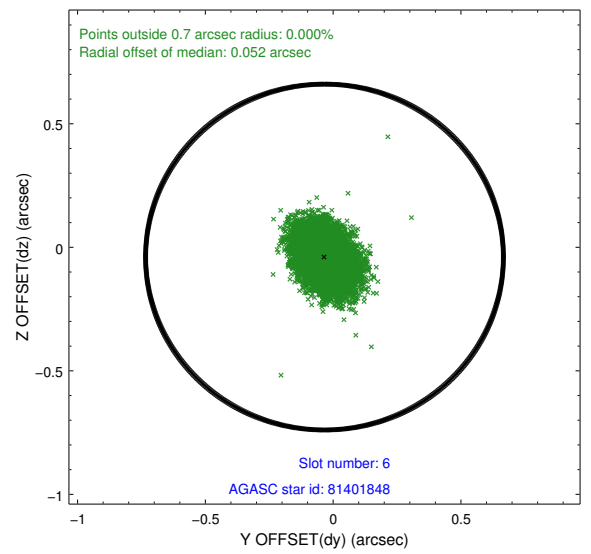
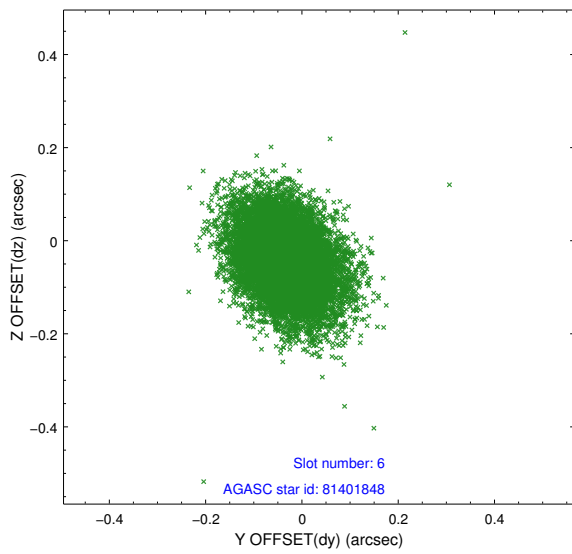
2.4.2 Slot 4



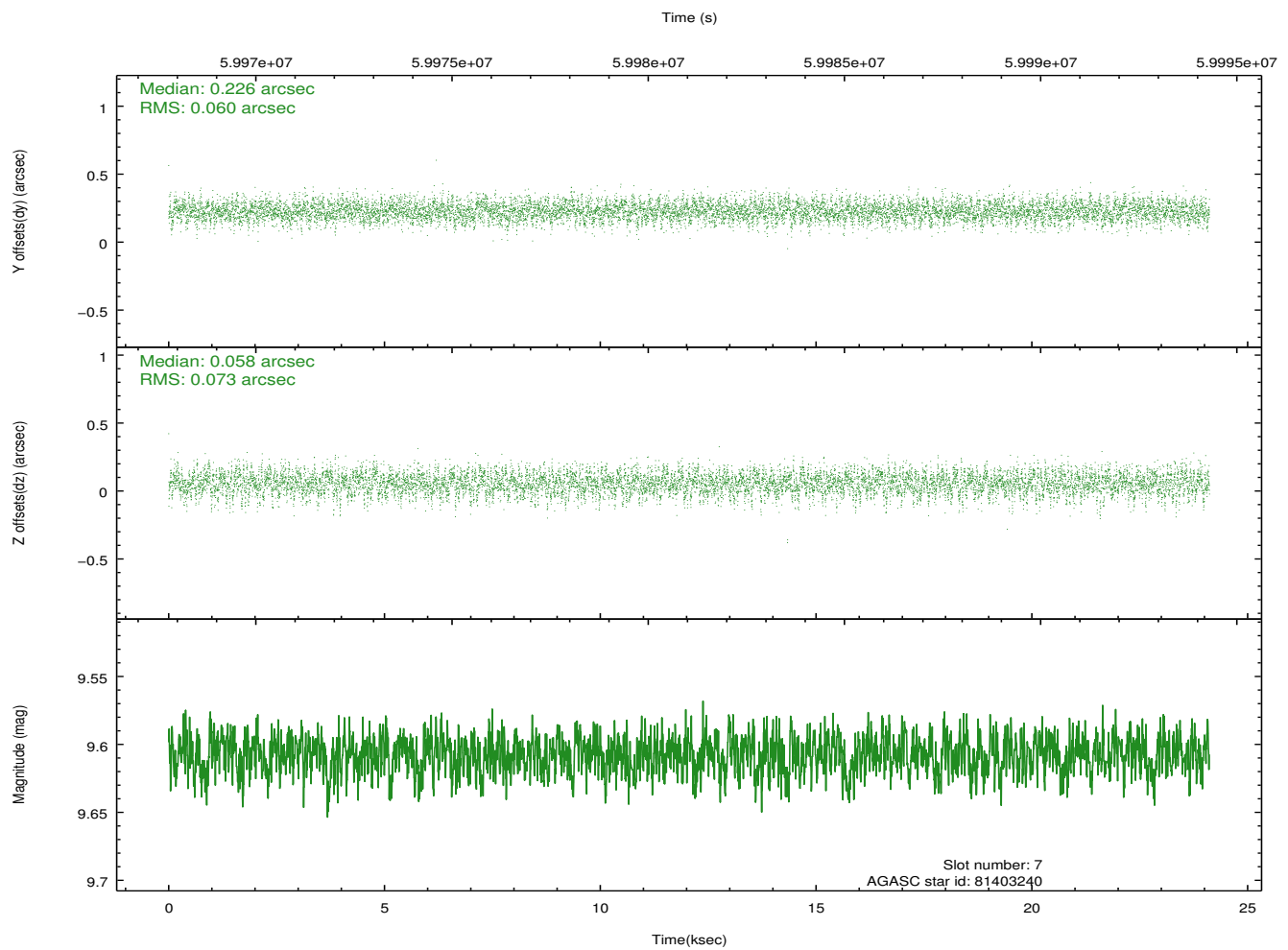
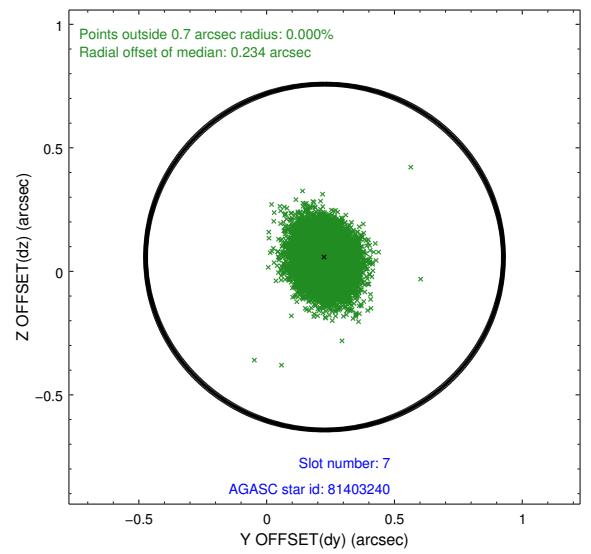
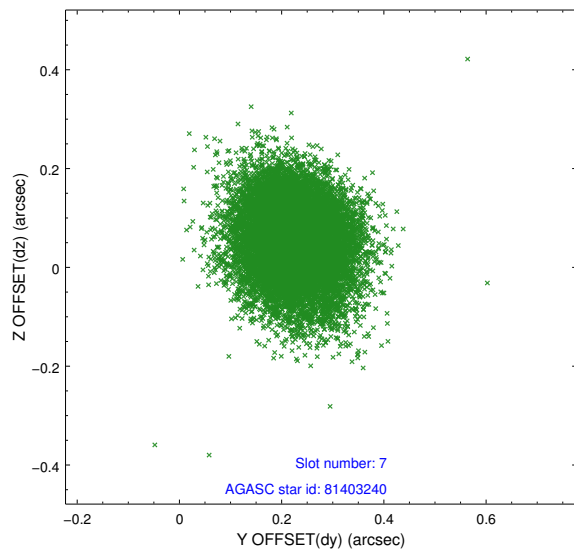
2.4.3 Slot 5



2.4.4 Slot 6

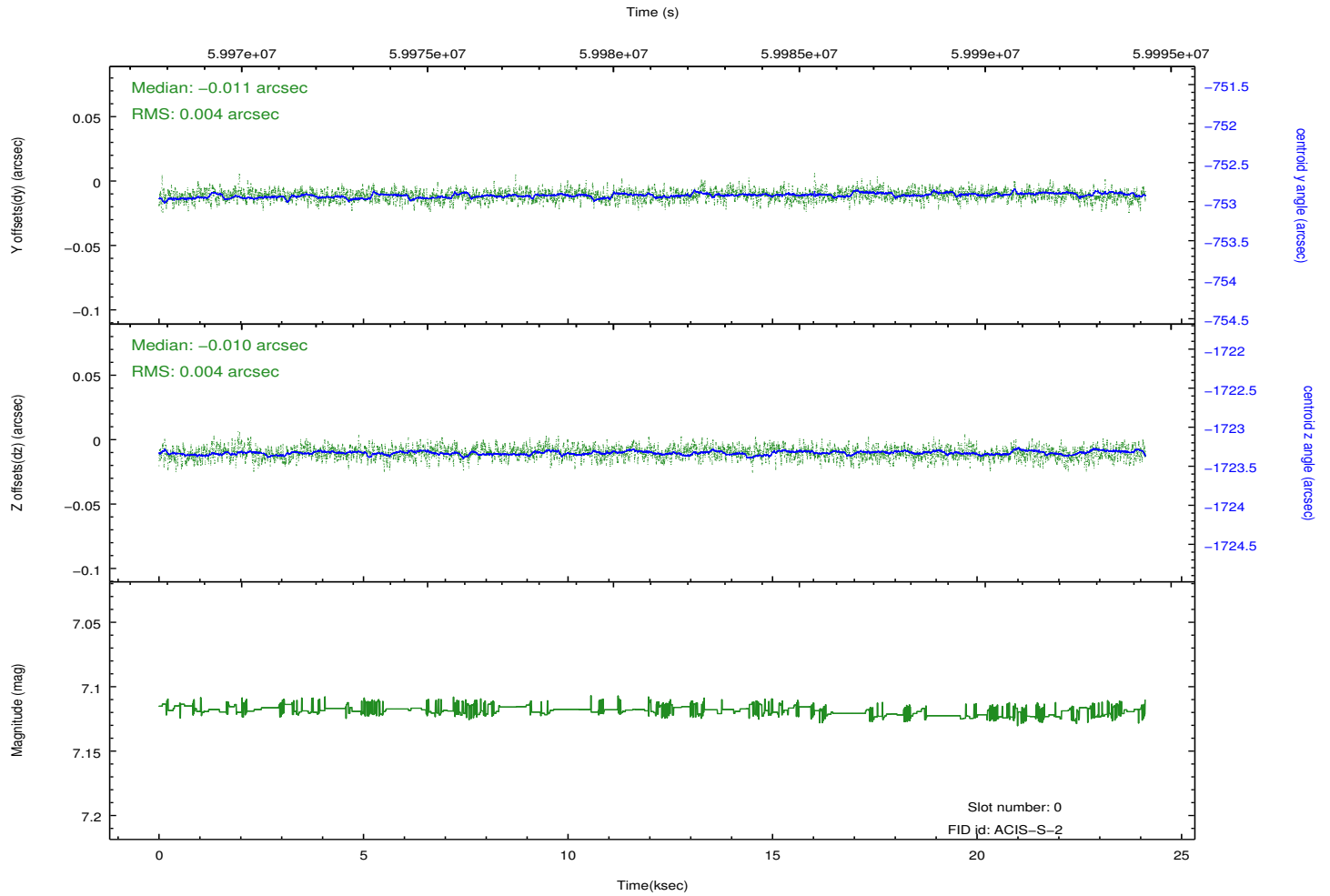
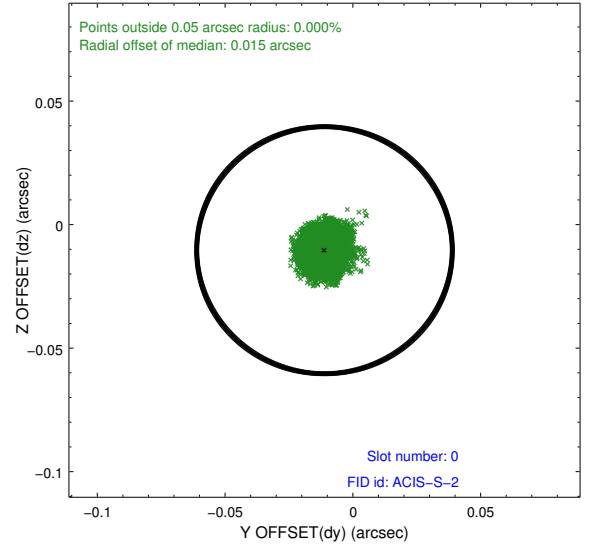
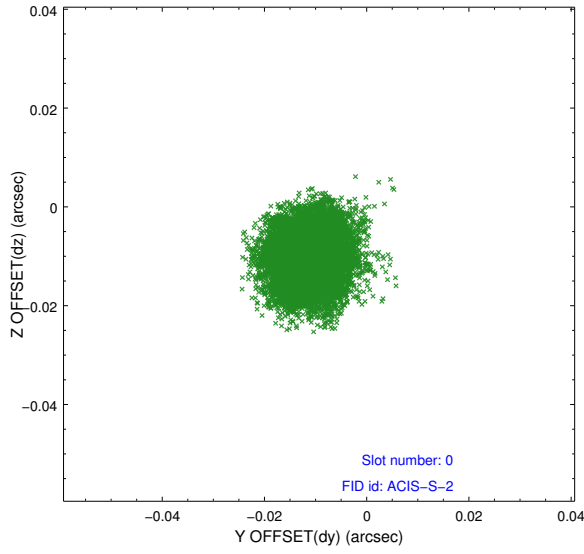


2.4.5 Slot 7

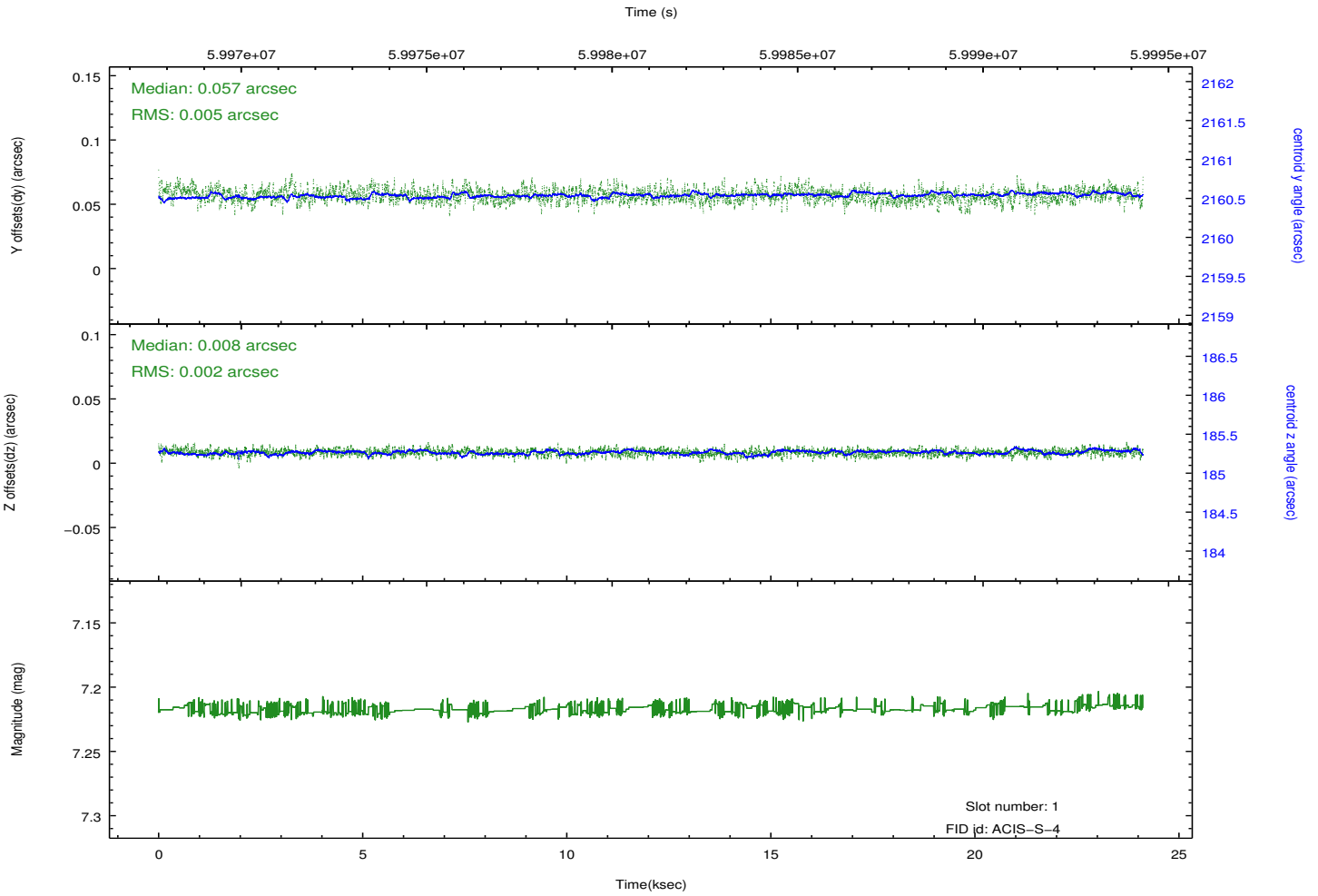
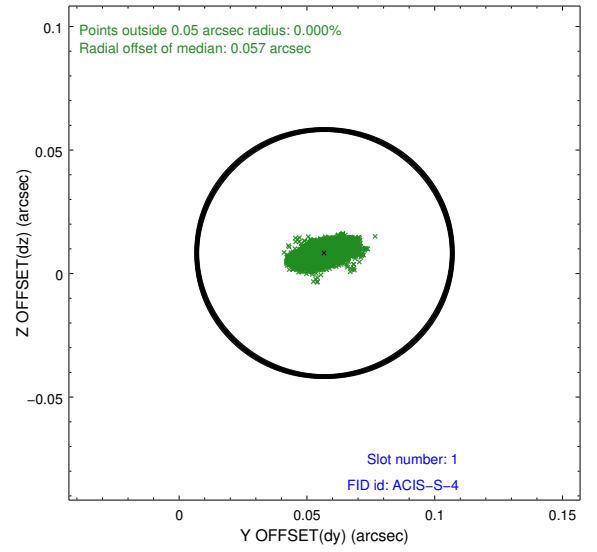
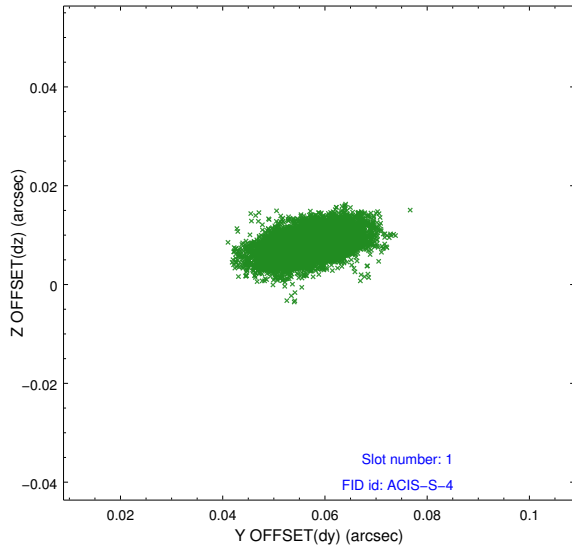


2.5 FID Slots

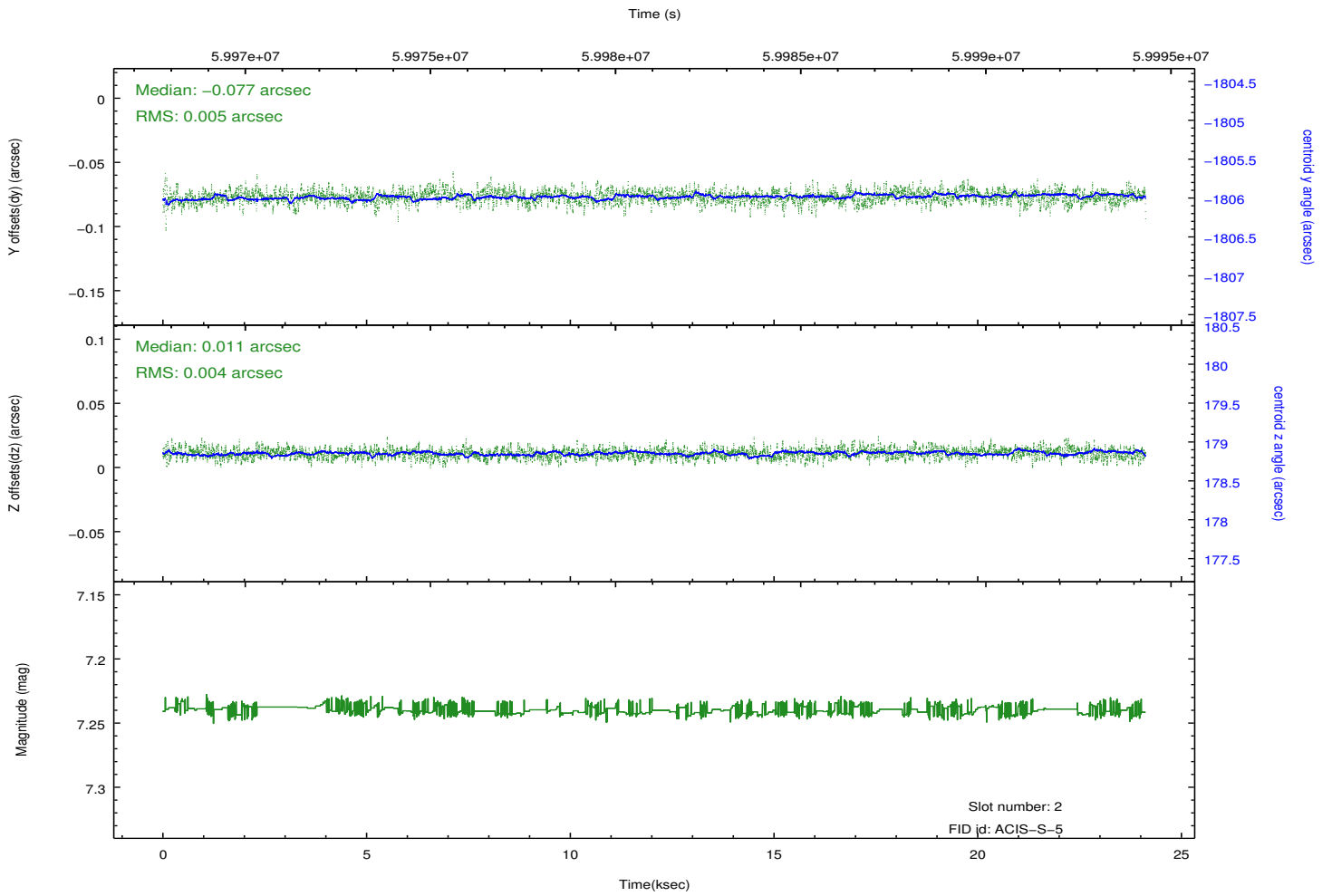
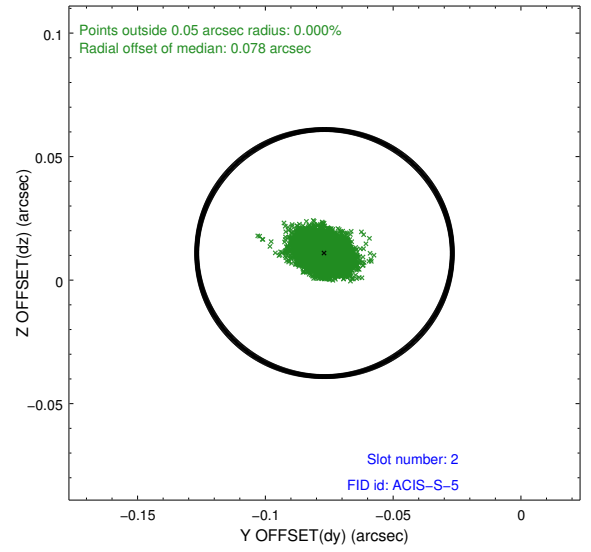
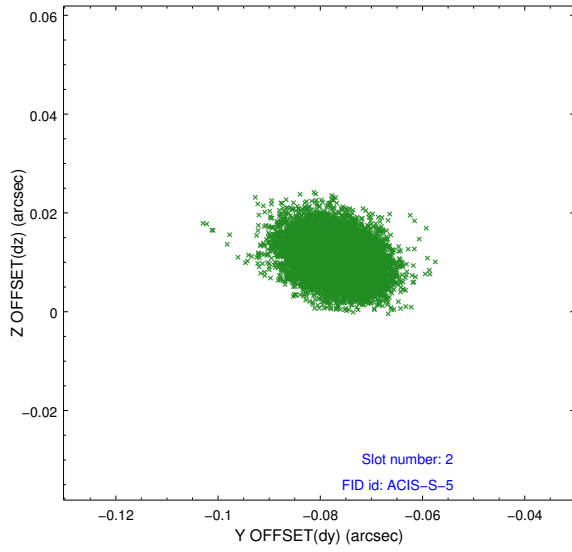
2.5.1 Slot 0



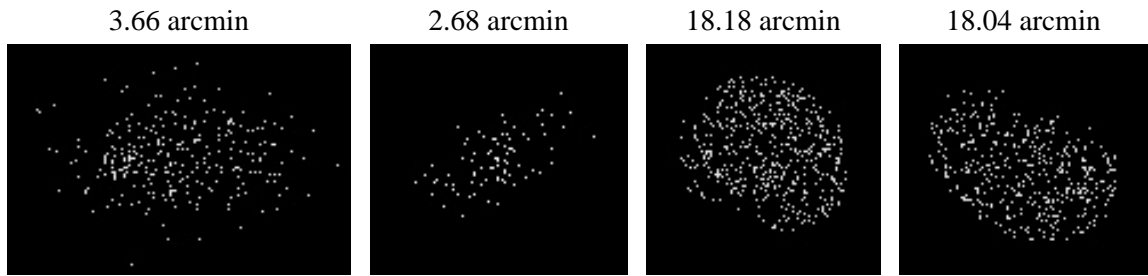
2.5.2 Slot 1



2.5.3 Slot 2



3 Point Sources



A Summary

A.1 Status

V&V Scientist	Beth Sundheim
V&V Date (YYYY-MM-DD)	2010.12.09
V&V Edition	1
V&V Disposition and Status	OK
V&V Charge Time	22.364

A.2 Comments

An image of Jupiter was inadvertently superposed on the bias map for chip 7. The region of that bias map containing the anomalous values due to the image of Jupiter was replaced with scaled values from another bias map for this chip taken near in time. The affected pixels are bounded by sky coords: (24.71635, 8.69848), (24.70239, 8.73043), (24.62888, 8.69904), (24.64284, 8.66709).

==

The focal plane temperature is approximately -110 C during this observation. This reprocessing of the data applies no CTI correction because none is available for this temperature at present.

The ACIS CTI correction has not been calibrated at this temperature because it was early in the mission, and ACIS had not yet been lowered to the standard -119.7 C. Both front- and back-illuminated chips are affected. However a T_GAIN correction has been applied to the BI chip (ACIS-7) data included here.

The ACIS spectral response calibration is less accurate at these warmer temperatures than it is at -119.7 C. Users whose science objectives depend on the most accurate spectral response (ie: fitting line-rich spectra) may notice an effect. Users whose science objectives do not depend on the most accurate spectral response should not notice an effect.