

# V&V Reference Report

## L2 ASCDS Version : 10.4

Observation 14923 - L2 Version 3  
Chandra X-Ray Center

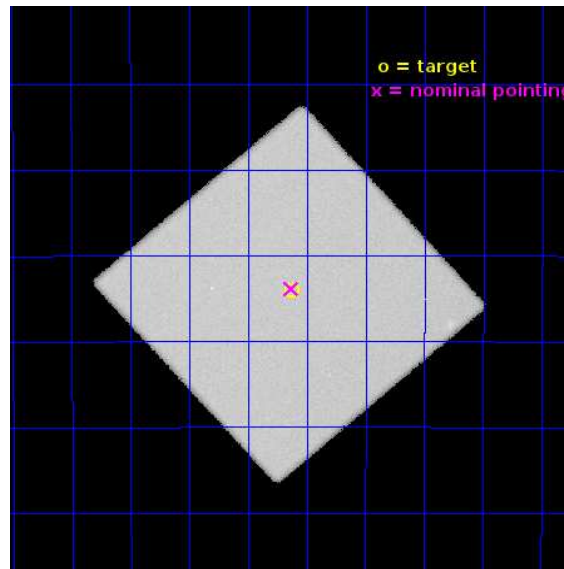
L2 Processing Date : Jun 10 2015

## Contents

<b>1</b>	<b>Front</b>	<b>2</b>
<b>2</b>	<b>OBI</b>	<b>3</b>
2.1	OBI . . . . .	3
2.1.1	Images . . . . .	3
2.1.2	Parameters . . . . .	4
2.1.3	Events . . . . .	4
2.2	Compared Parameters . . . . .	5
2.3	Aspect . . . . .	6
2.4	Star Slots . . . . .	9
2.4.1	Slot 3 . . . . .	9
2.4.2	Slot 4 . . . . .	10
2.4.3	Slot 5 . . . . .	11
2.4.4	Slot 6 . . . . .	12
2.4.5	Slot 7 . . . . .	13
2.5	FID Slots . . . . .	14
2.5.1	Slot 0 . . . . .	14
2.5.2	Slot 1 . . . . .	15
2.5.3	Slot 2 . . . . .	16
<b>A</b>	<b>Summary</b>	<b>17</b>
A.1	Status . . . . .	17
A.2	Comments . . . . .	17

# 1 Front

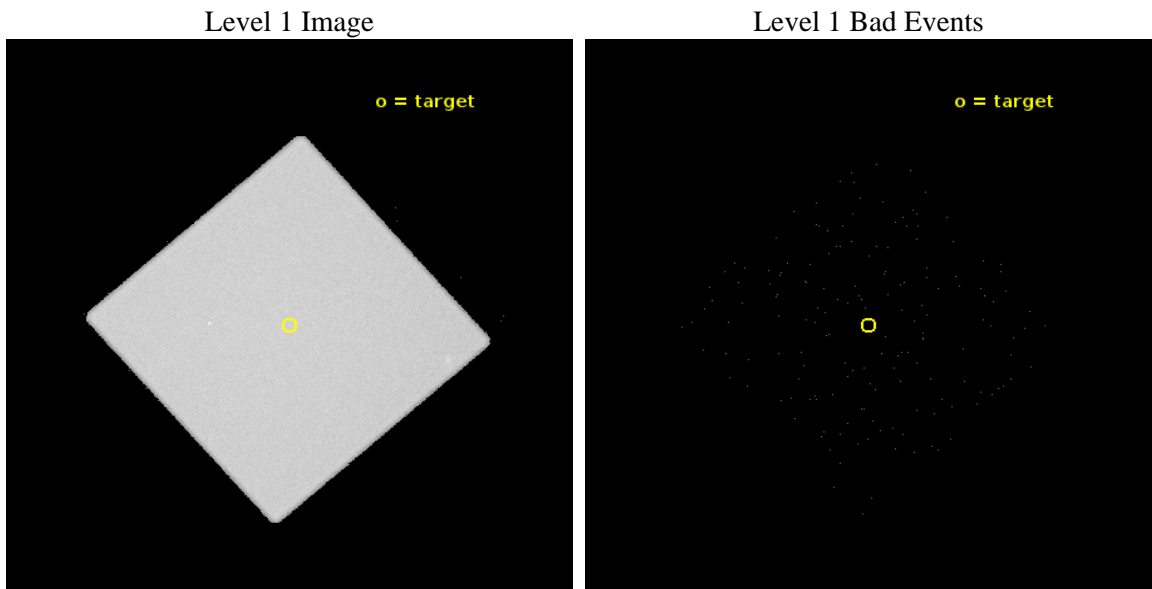
seq_num	601053	Sequence number
obs_id	14923	Observation id
title	Seeing through Baade's Window: Discovering X-Ray Sources that have Long-Term Optical Light Curves	Proposal title
observer	Dr. Rosanne Di Stefano	Principal investigator
object	Baade's Window HRC-8	Source name
ra_targ	271.28125	Observer's specified target RA [deg]
dec_targ	-28.401528	Observer's specified target Dec [deg]
ra_nom	271.2827155526	Nominal RA [deg]
dec_nom	-28.397515351784	Nominal Dec [deg]
roll_nom	93.695447618498	Nominal Roll [deg]
revision	3	Processing version of data
ontime	30183.176663101	[s]
livetime	29972.197919719	Ontime multiplied by DTCOR
l2events	1649949	Number of level 2 events



## 2 OBI

### 2.1 OBI

#### 2.1.1 Images



### 2.1.2 Parameters

obi_num	0	Obi number	sched_exp_time	30000.000000	[s] Scheduled observation exposure time
ascdsver	10.4	Processing system revision	ontime	30183.176663101	[s]
caldbver	4.6.7	&#160	l1events	2238453	Number of level 1 events
date	2015-06-10T14:45:04	Date and time of file creation			
revision	3	Processing version of data			

### 2.1.3 Events

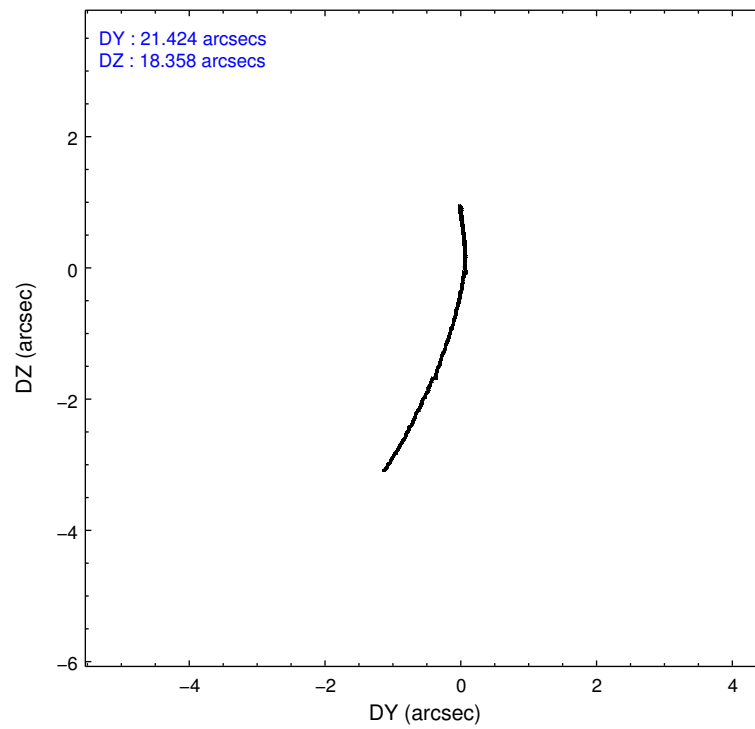
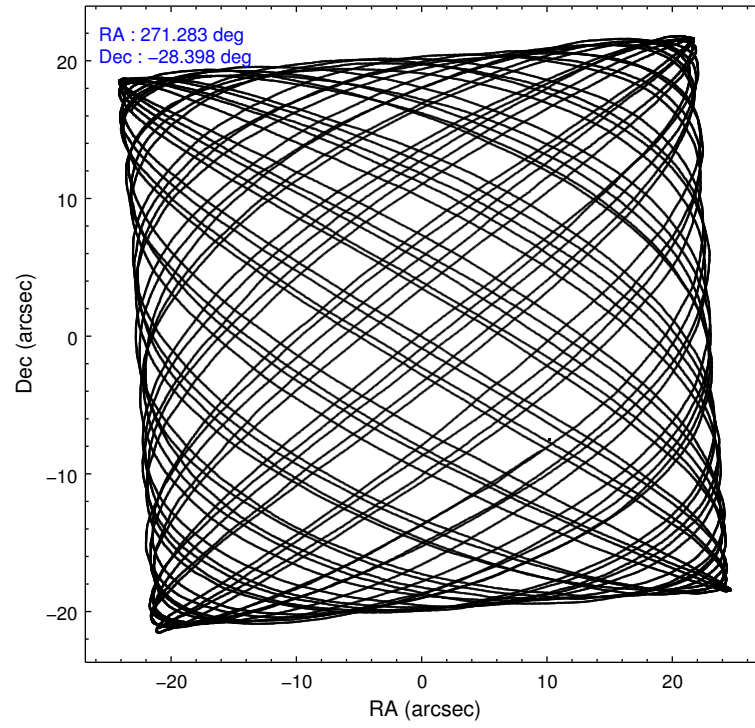
#### Level 1 Events

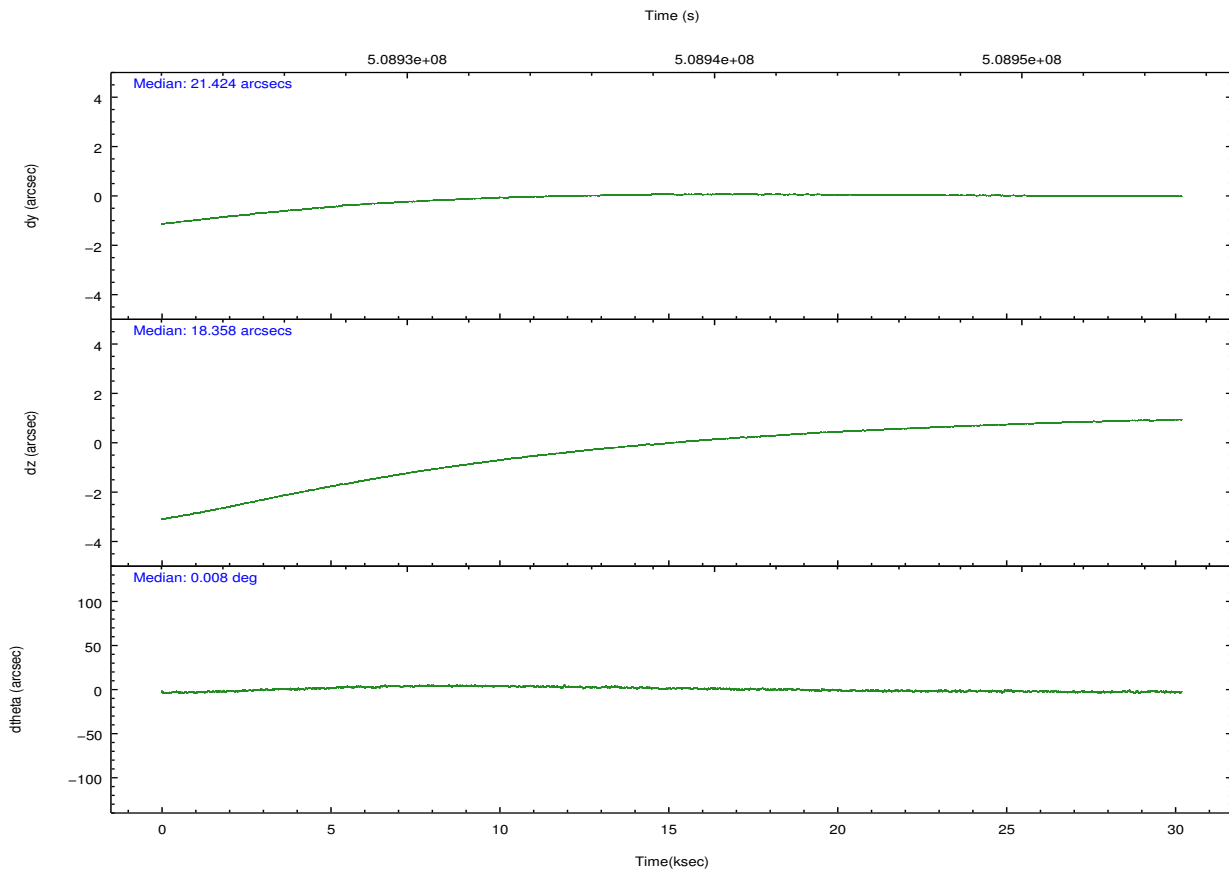
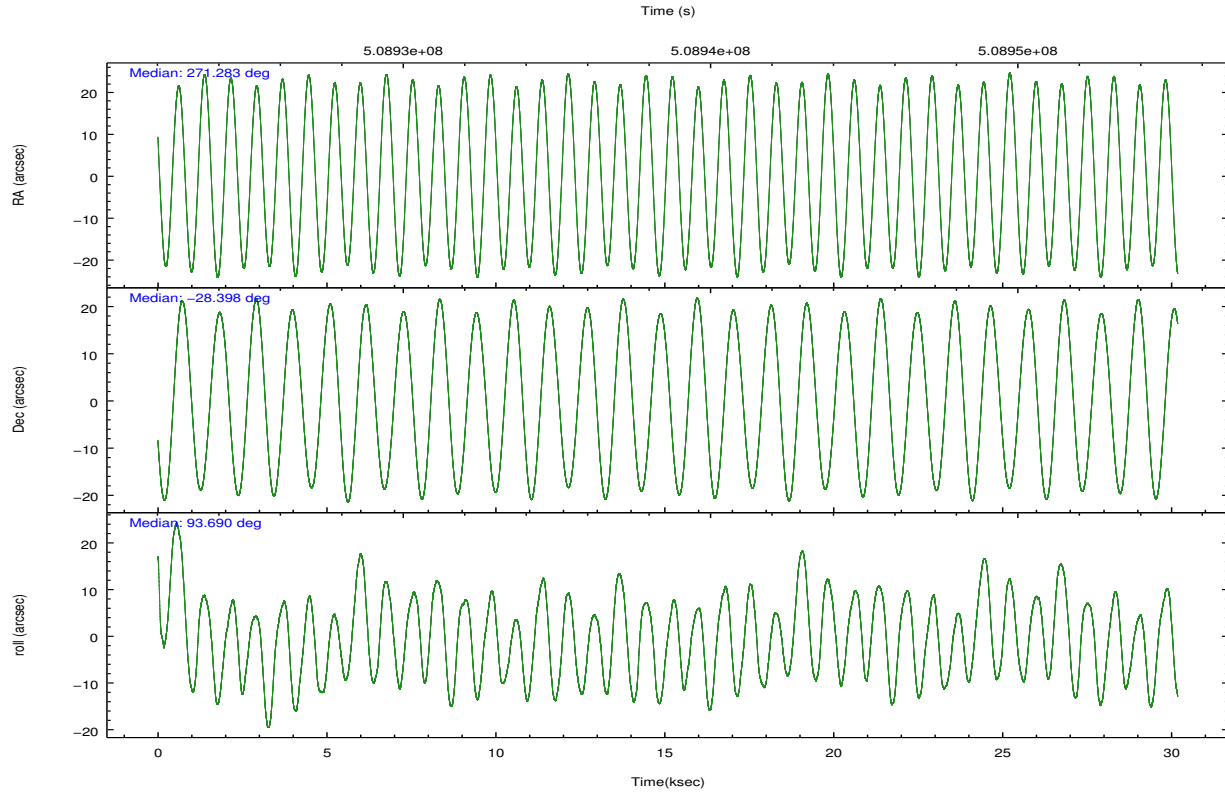
	<b>segment 0</b>
level 1 events	2238453
rejected events	26118
rejected %	1%

## 2.2 Compared Parameters

Parameter	Planned	Actual	Parameter	Planned	Actual
Instrument	HRC	HRC	Obspar format version number	7	7
Detector	HRC-I	HRC-I	Obspar file type	PREDICTED	ACTUAL
Grating	NONE	NONE	Obspar update status	NONE	UPDATED
Data mode	OBSERVING	OBSERVING			
Observation mode	POINTING	POINTING			
[deg] Pointing RA	271.300476	271.2827155525958			
[deg] Pointing Dec	-28.419774	-28.39751535178355			
[deg] Pointing Roll	93.799390	93.69544761849757			
[mm] SIM focus pos	-1.040293	-1.038866356238299			
[mm] SIM defocus	0	0.001426264420575141			
[mm] SIM translation stage pos	126.985494	126.9829799899862			
[mm] SIM translation stage offset	0	0.002508901615314585			
[s] Observation start time (MET)	508923700.184000	508923221.11405			
Observation start date	2014-02-16T07:40:33	2014-02-16T07:33:41			
[s] Observation end time (MET)	508953700.184000	508954640.95329			
Observation end date	2014-02-16T16:00:33	2014-02-16T16:17:20			

## 2.3 Aspect





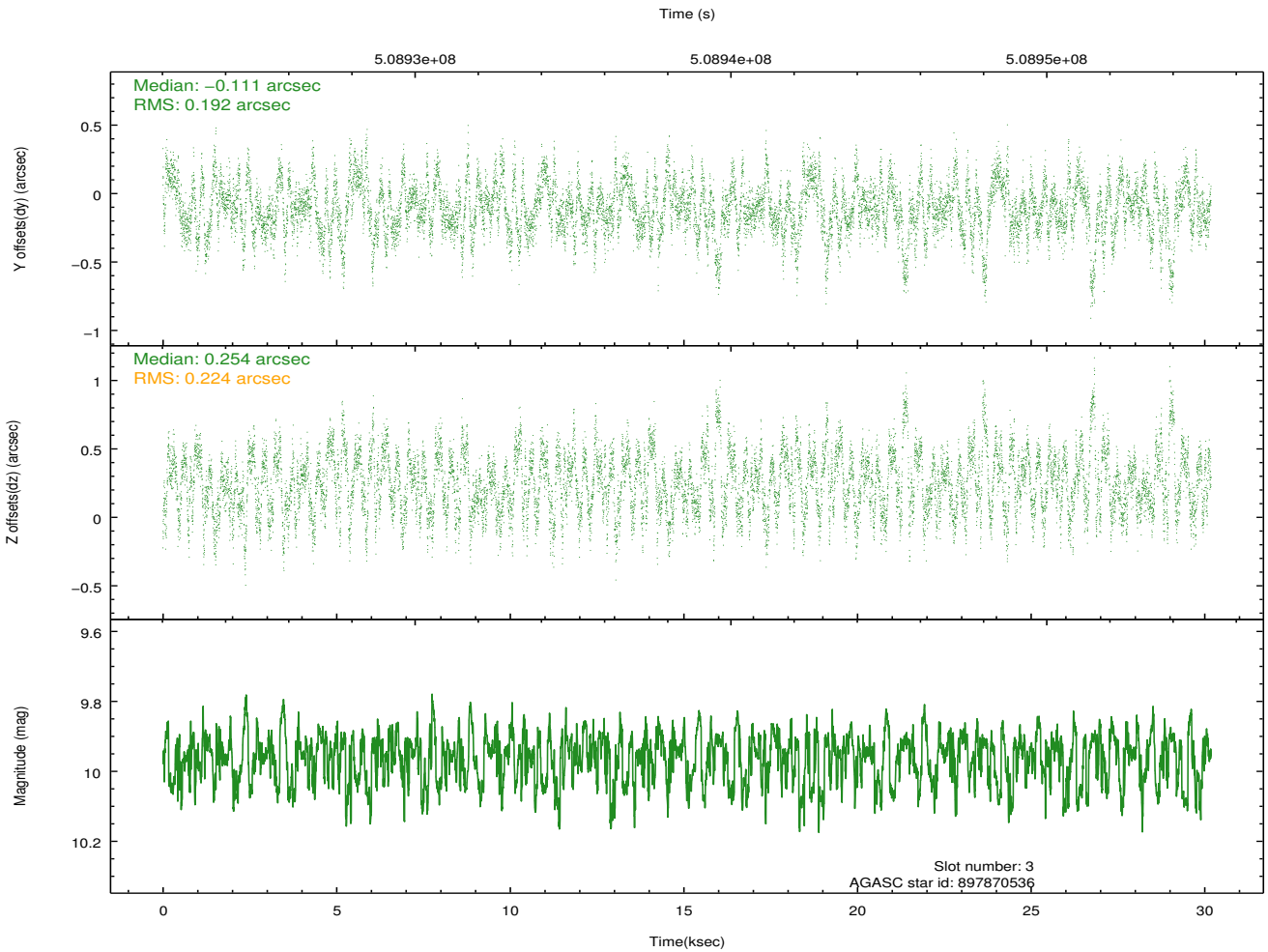
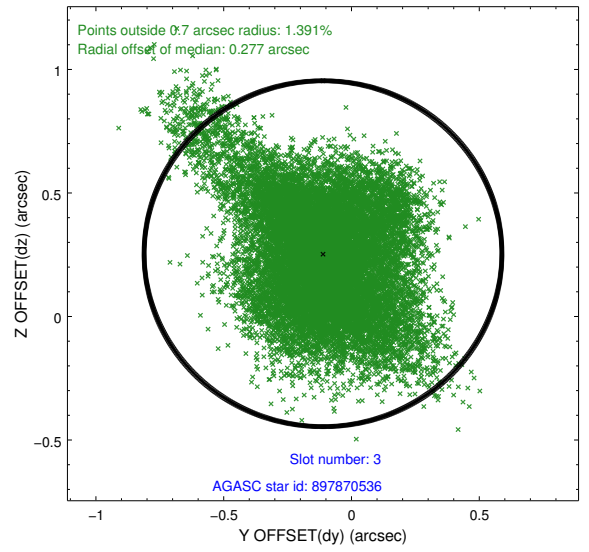
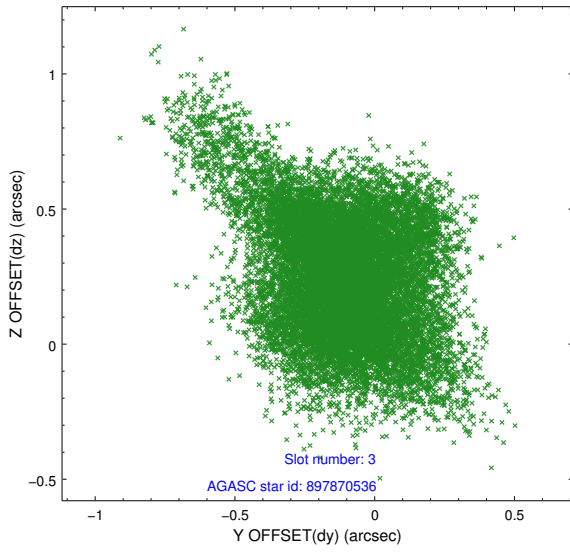
### Slot Statistics

slot	status	used	id	mag	n_pts	med_dy	med_dz	dr1	dr2	ra	dec	mean_y	mean_z
0	FID		HRC-I-1	6.95	7361	-0.094	0.046	0.022	0.033	0.000000	0.000000	-777.34	-1306.11
1	FID		HRC-I-2	6.98	7362	0.207	-0.085	0.024	0.036	0.000000	0.000000	835.49	-1307.99
2	FID		HRC-I-3	7.03	7363	0.005	-0.047	0.023	0.033	0.000000	0.000000	-1205.62	998.18
3	GUIDE	used	897870536	9.96	14662	-0.111	0.254	0.304	0.523	271.938858	-27.887020	1774.31	-2153.16
4	GUIDE	used	898368848	8.65	14720	0.468	0.263	0.127	0.204	271.700599	-29.036638	-2300.34	-1109.40
5	GUIDE	used	898385592	8.95	14715	0.150	0.161	0.128	0.206	271.565127	-28.339195	233.41	-855.66
6	GUIDE	used	897867000	9.59	14719	-0.224	-0.288	0.172	0.279	270.535158	-28.004749	1644.33	2328.68
7	GUIDE	used	897864648	9.42	14680	-0.280	-0.397	0.140	0.221	270.698383	-27.859551	2134.64	1778.96

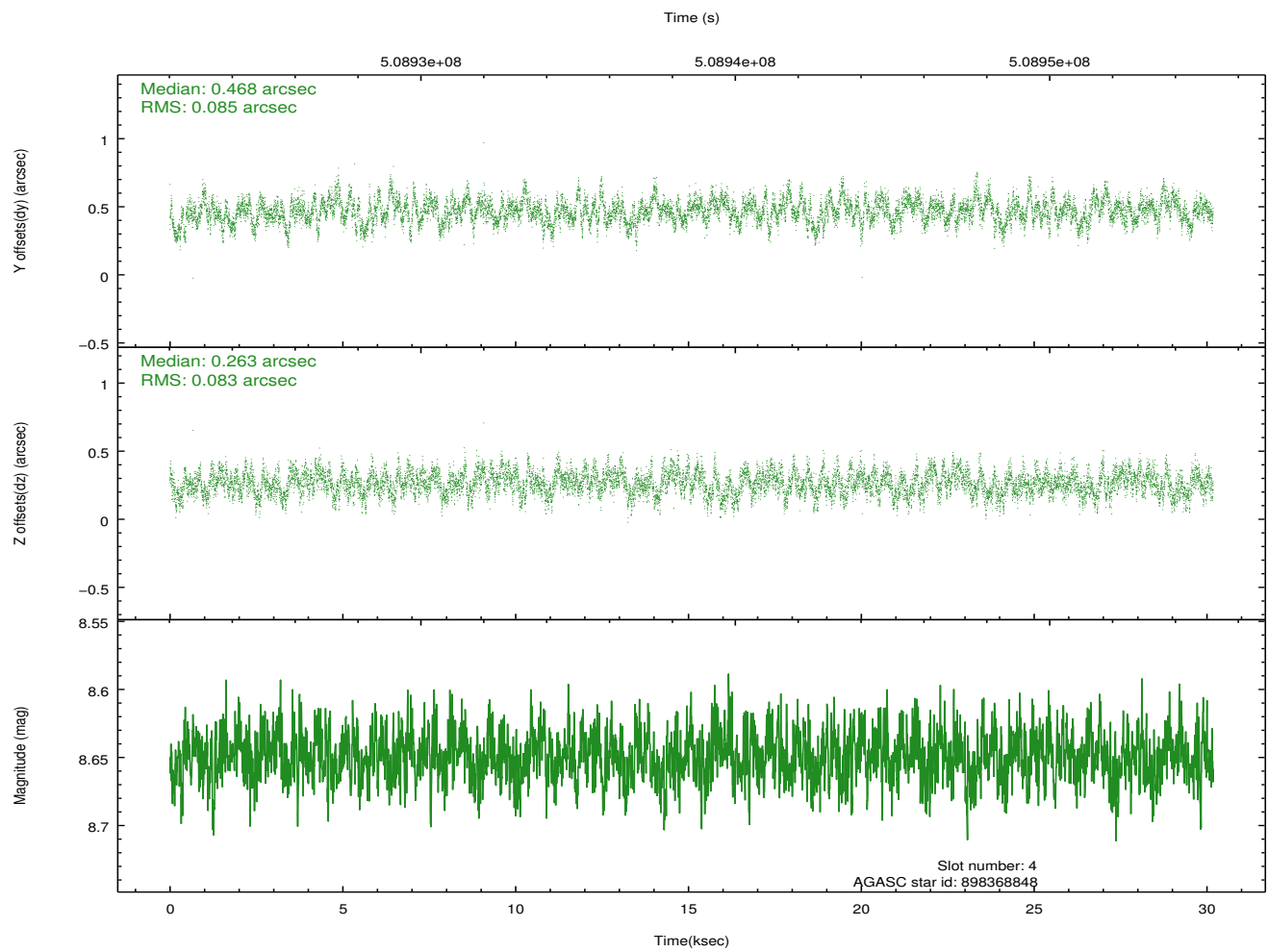
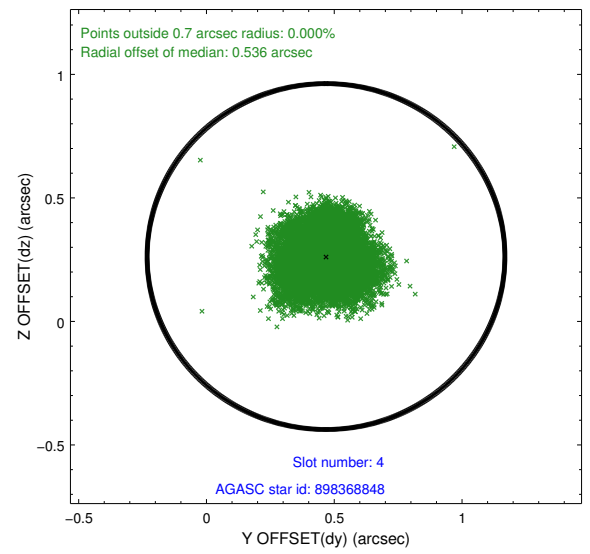
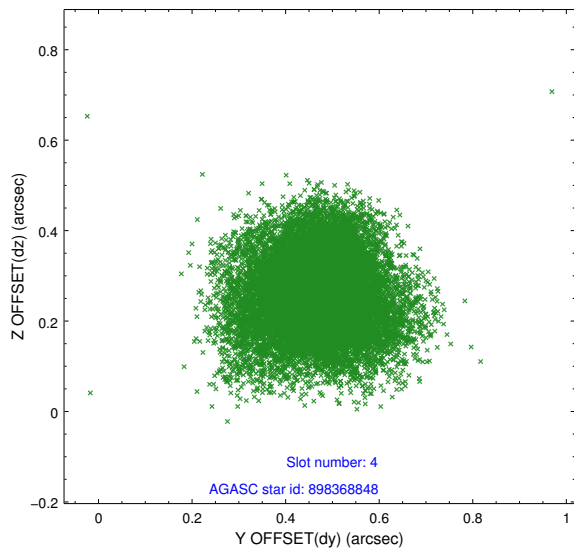
∞

## 2.4 Star Slots

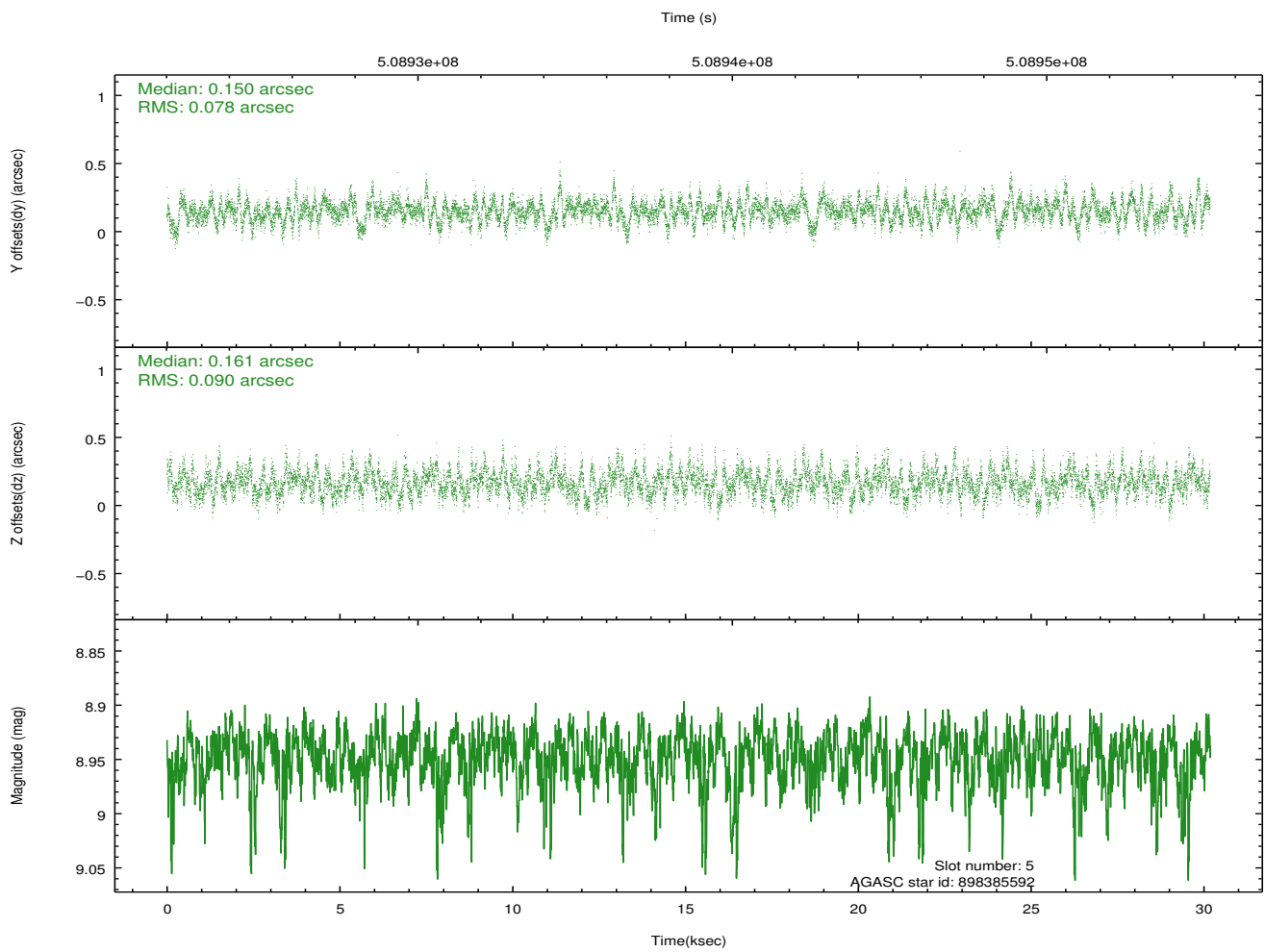
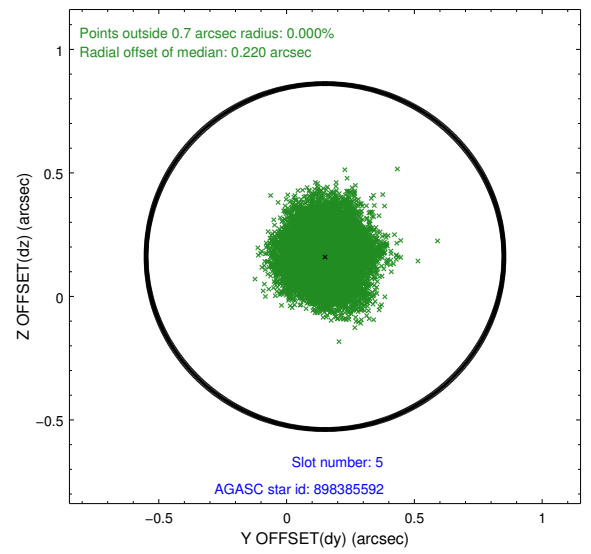
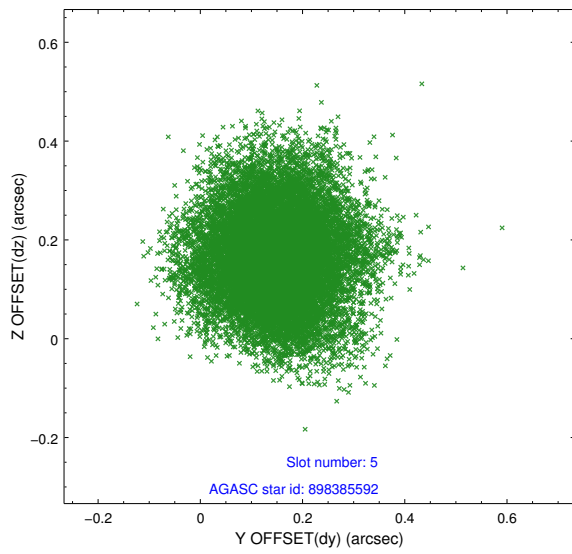
### 2.4.1 Slot 3



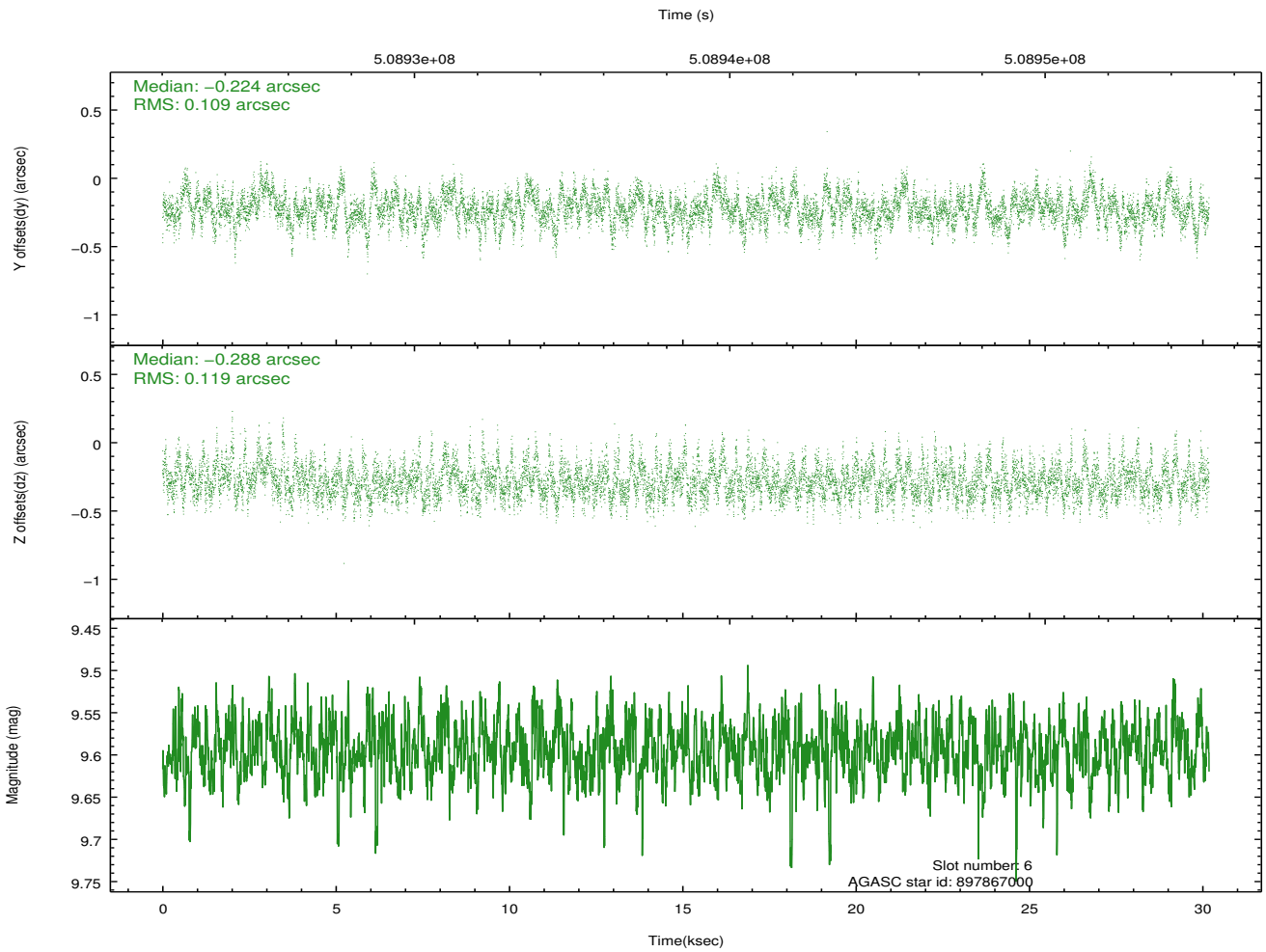
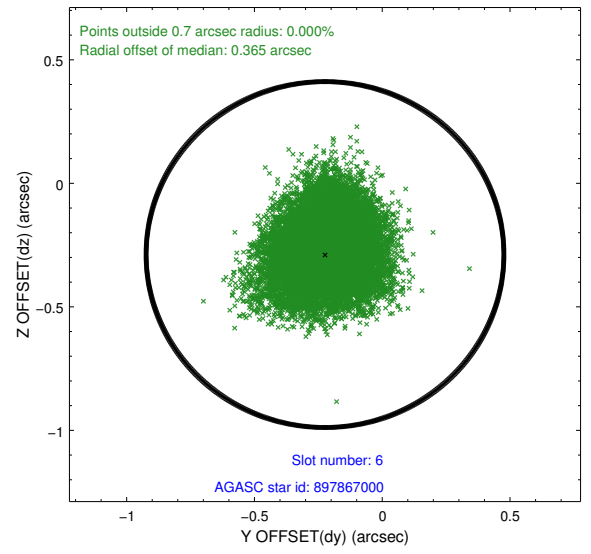
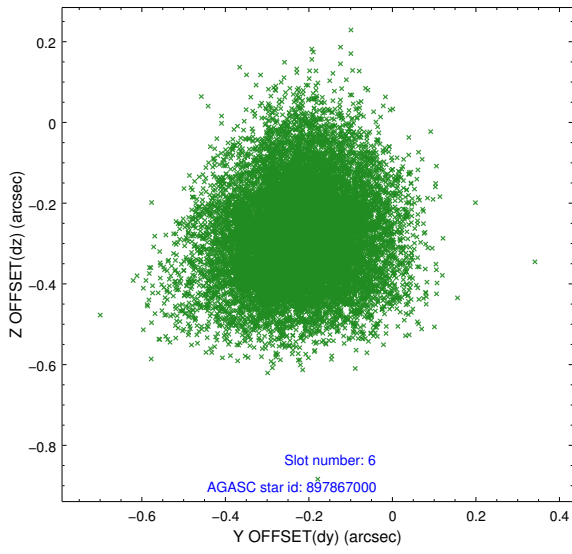
## 2.4.2 Slot 4



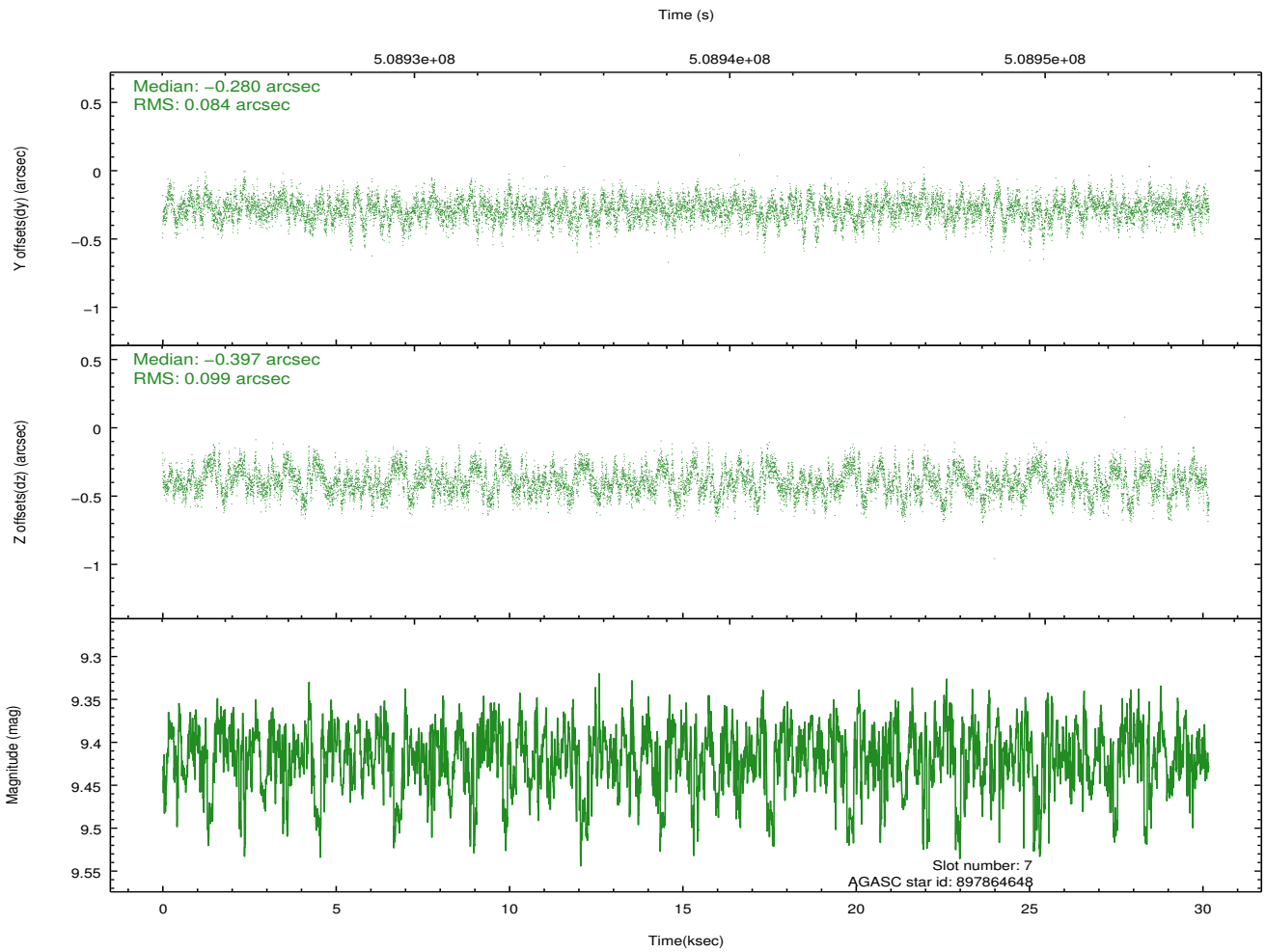
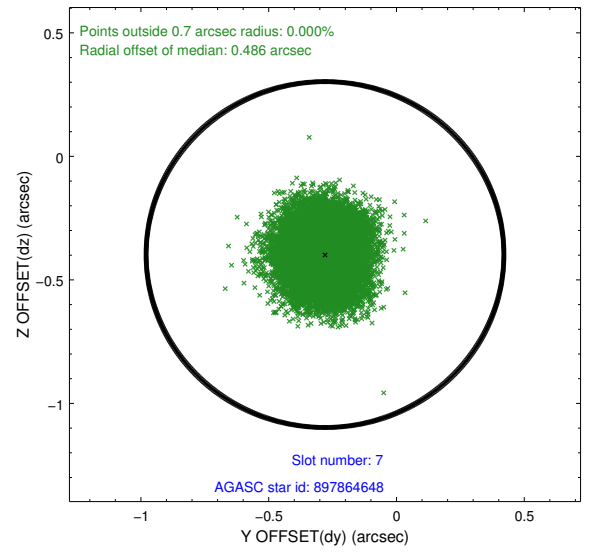
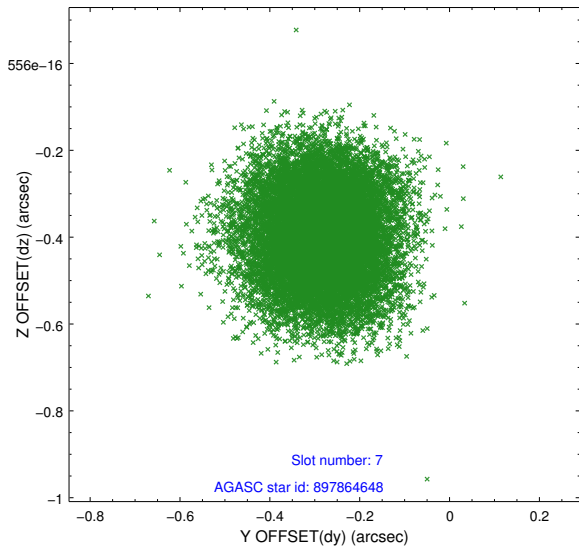
### 2.4.3 Slot 5



## 2.4.4 Slot 6

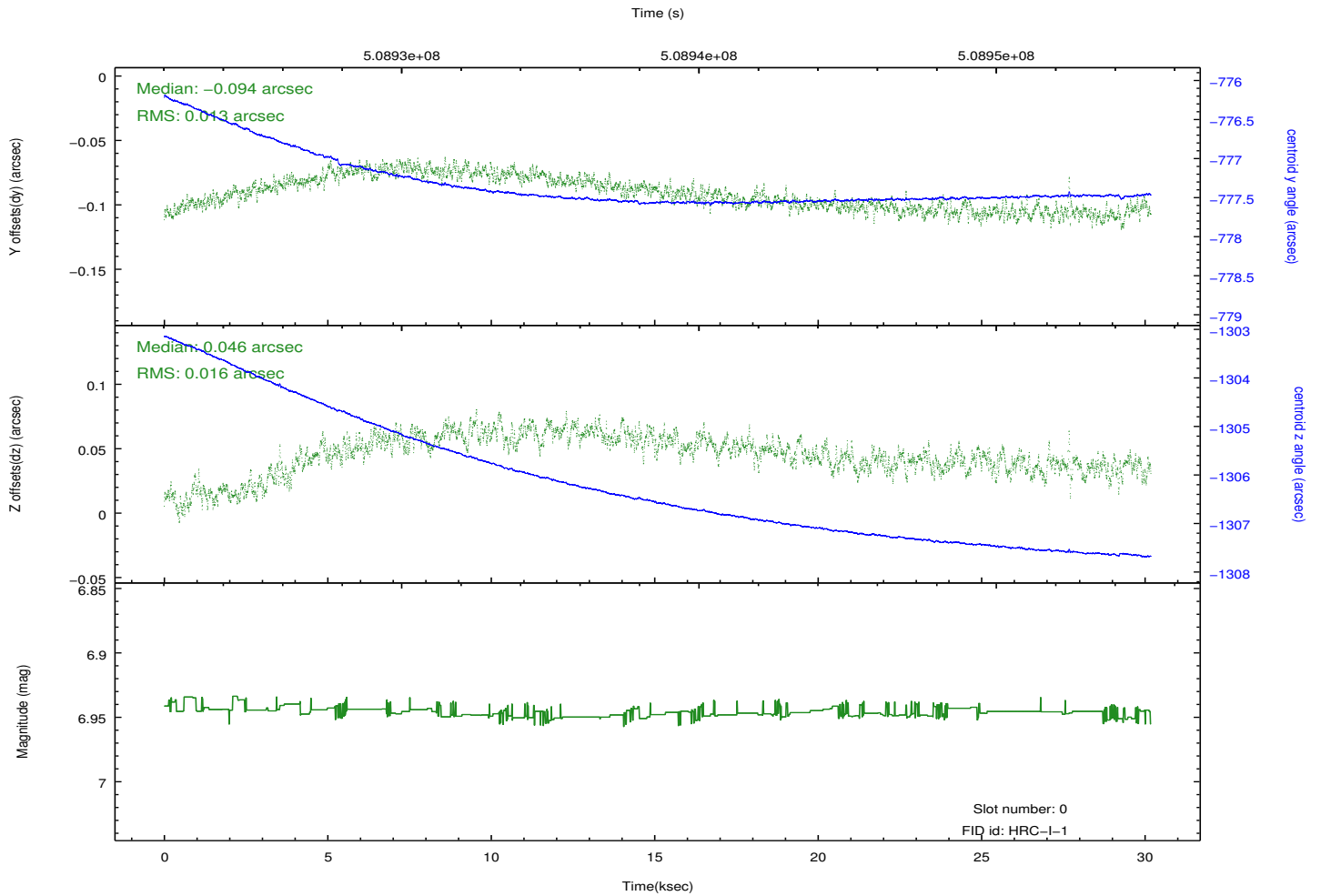
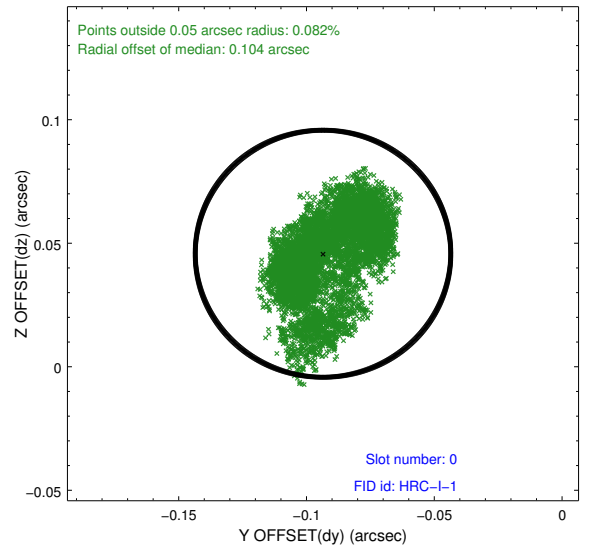
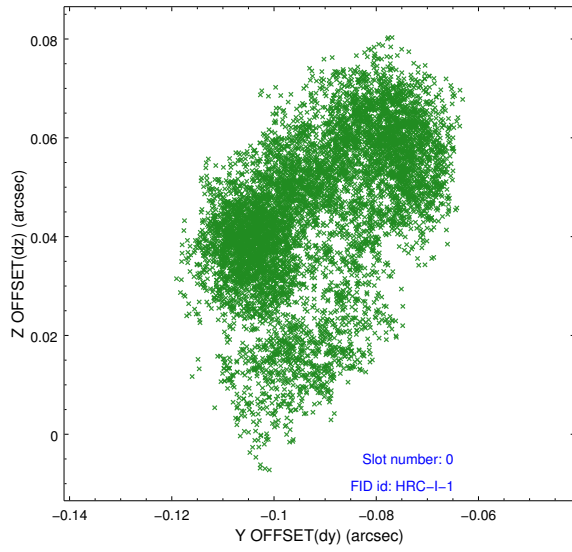


### 2.4.5 Slot 7

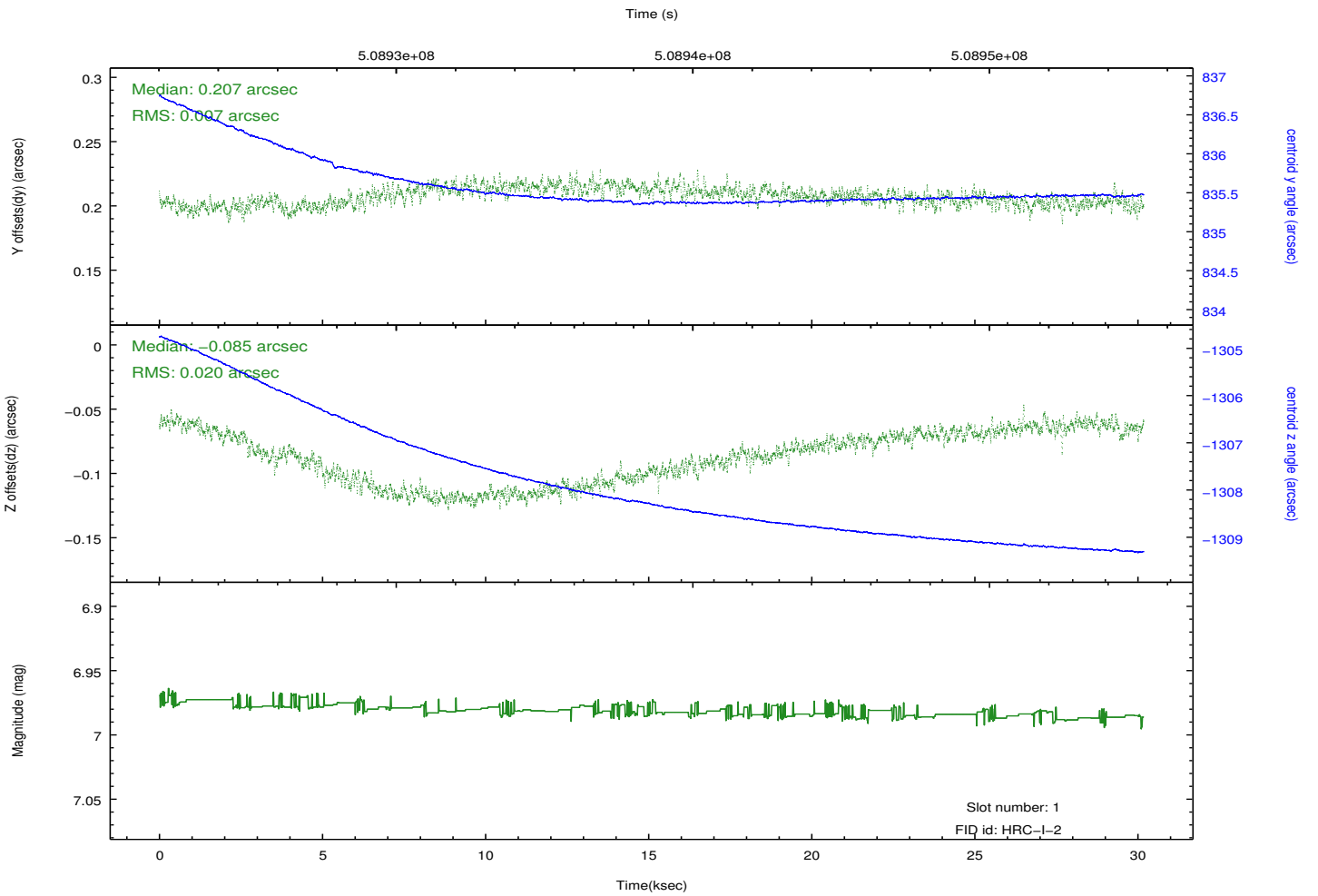
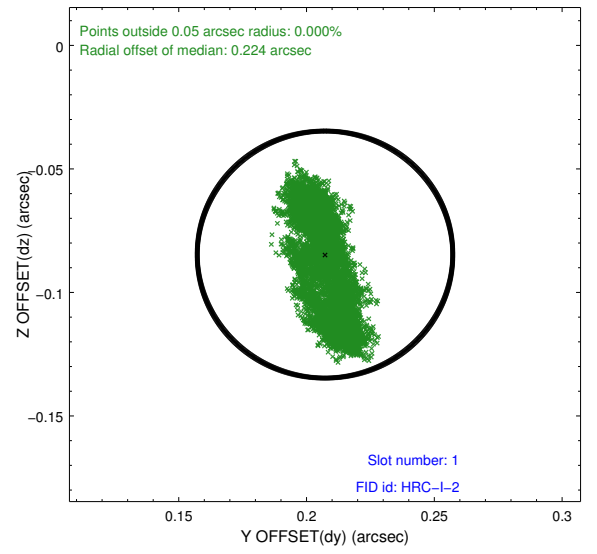
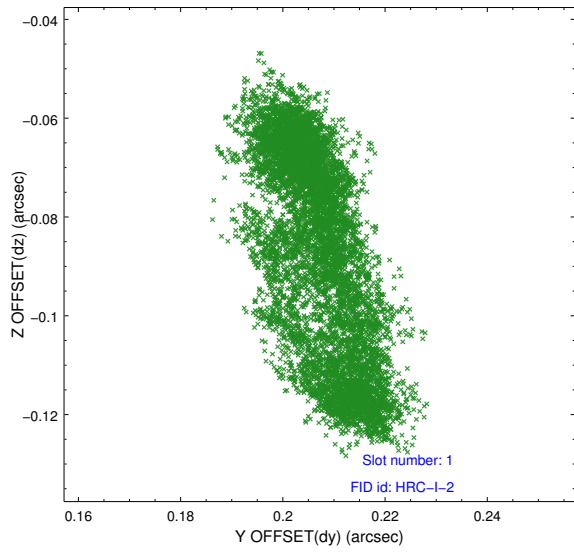


## 2.5 FID Slots

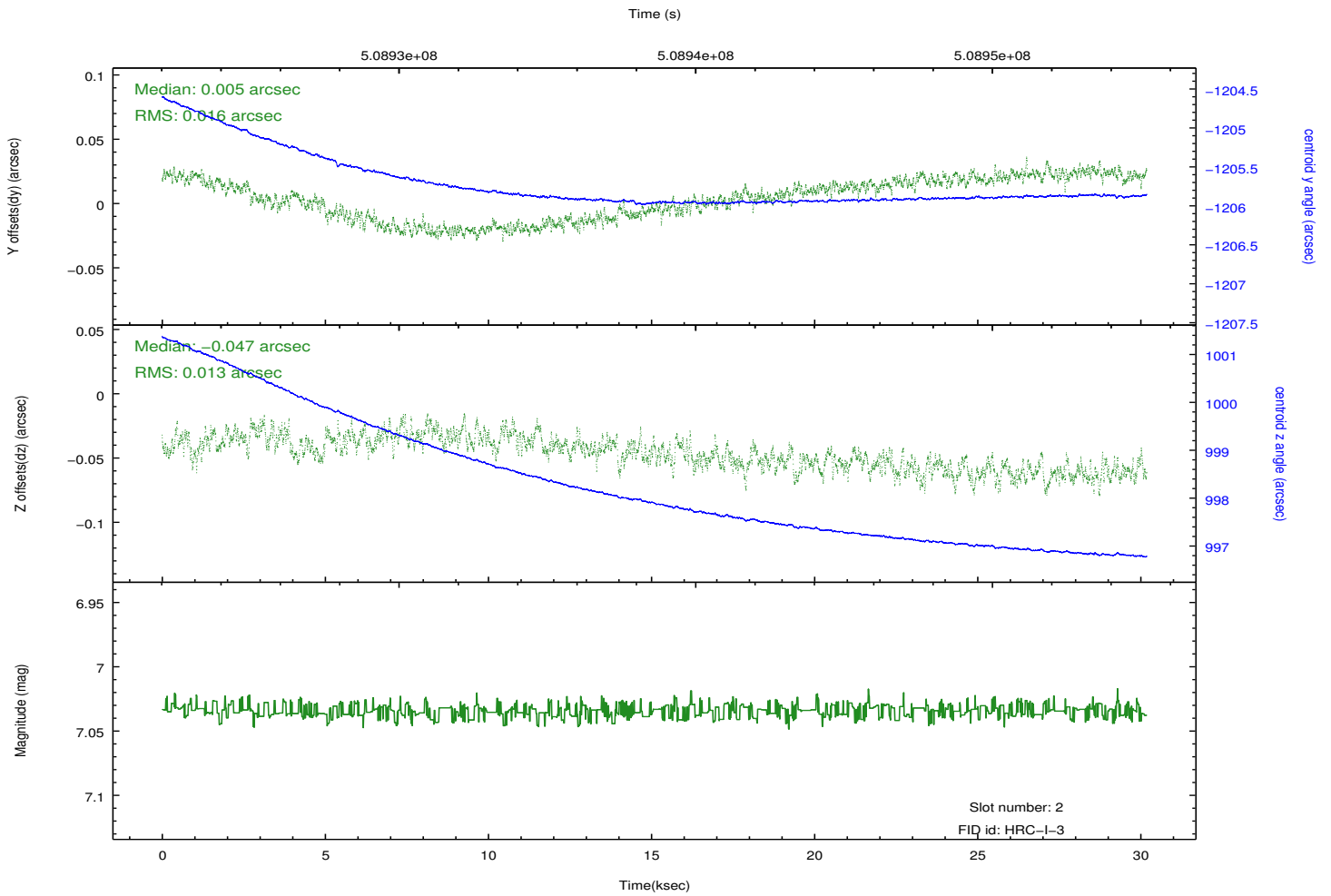
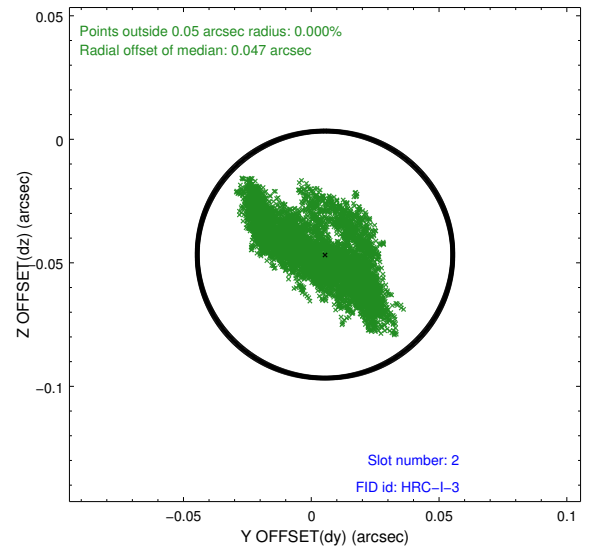
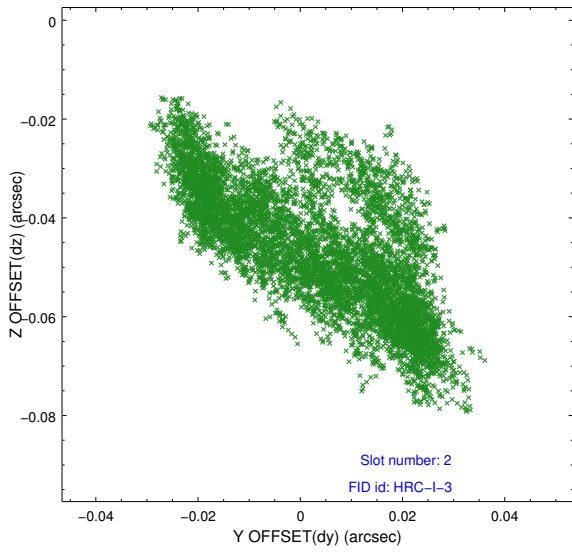
### 2.5.1 Slot 0



## 2.5.2 Slot 1



### 2.5.3 Slot 2



# A Summary

## A.1 Status

V&V Scientist	Beth Sundheim
V&V Date (YYYY-MM-DD)	2015.06.18
V&V Edition	1
V&V Disposition and Status	OK
V&V Charge Time	30.183176663101

## A.2 Comments