

V&V Reference Report

L2 ASCDS Version : 10.3.3

Observation 16723 - L2 Version 1
Chandra X-Ray Center

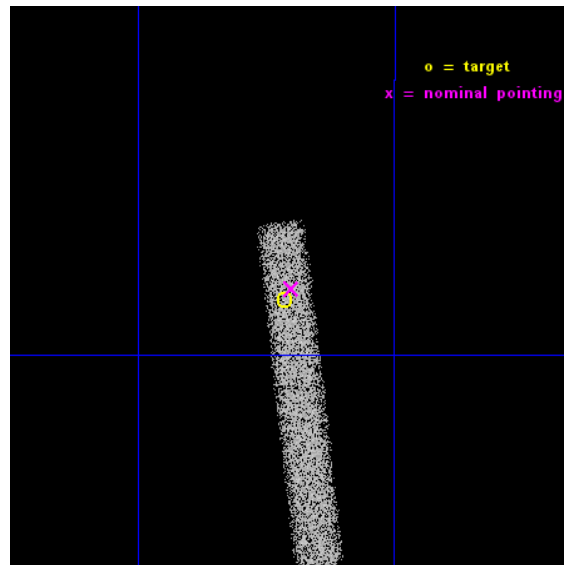
L2 Processing Date : May 21 2015

Contents

1	Front	2
2	OBI	3
2.1	OBI	3
2.1.1	Images	3
2.1.2	Bias	3
2.1.3	Parameters	4
2.1.4	Events	4
2.2	Compared Parameters	5
2.3	Aspect	6
2.4	Star Slots	9
2.4.1	Slot 3	9
2.4.2	Slot 4	10
2.4.3	Slot 5	11
2.4.4	Slot 6	12
2.4.5	Slot 7	13
2.5	FID Slots	14
2.5.1	Slot 0	14
2.5.2	Slot 1	15
2.5.3	Slot 2	16
A	Summary	17
A.1	Status	17
A.2	Comments	17

1 Front

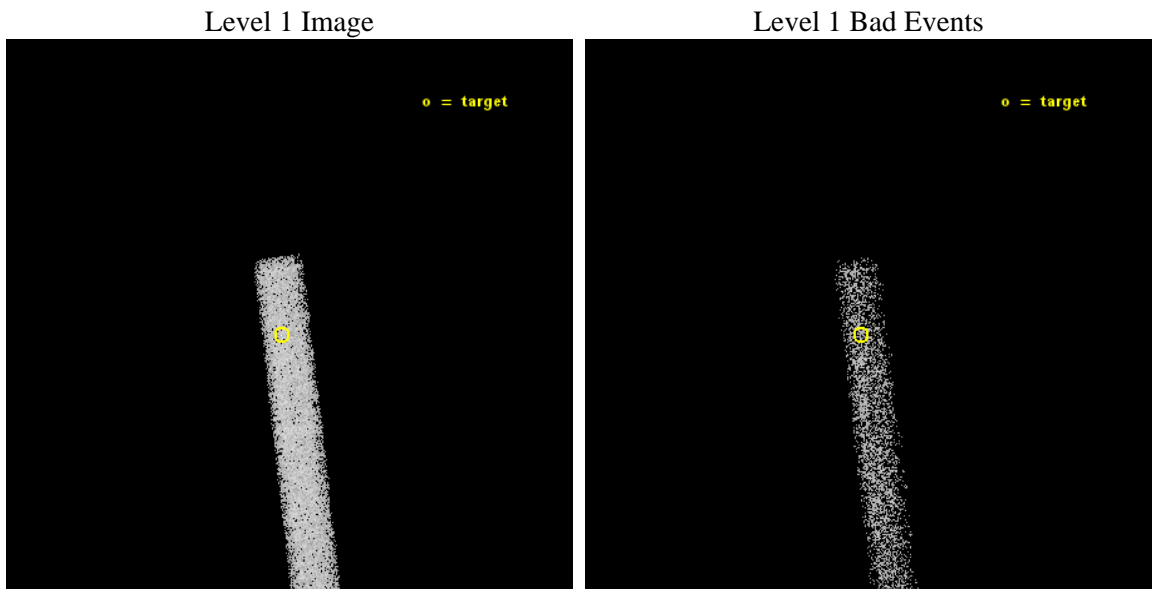
seq_num	401645	Sequence number
obs_id	16723	Observation id
title	Crust cooling of accretion-heated neutron stars	Proposal title
observer	Dr. Rudy Wijnands	Principal investigator
object	GRO J1750-27	Source name
dtcycle	0	
cycle	P	events from which exps? Prim/Second/Both
ra_targ	267.303333	Observer's specified target RA [deg]
dec_targ	-26.644111	Observer's specified target Dec [deg]
ra_nom	267.30009585786	Nominal RA [deg]
dec_nom	-26.639495802799	Nominal Dec [deg]
roll_nom	83.038771179319	Nominal Roll [deg]
revision	1	Processing version of data
ontime	29657.838922143	Sum of GTIs [s]
livetime	26898.094433288	Livetime [s]
ontime7	29657.838922143	Sum of GTIs [s]
l2events	13536	Number of level 2 events



2 OBI

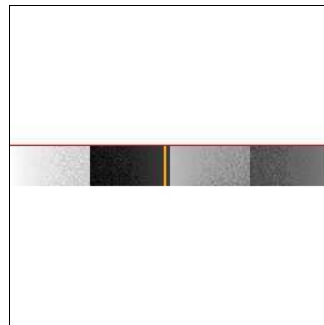
2.1 OBI

2.1.1 Images



2.1.2 Bias

Chip 7



2.1.3 Parameters

obi_num	0	Obi number	sched_exp_time	29587.789000	[s] Scheduled observation exposure time
ascdsver	10.3.3	Processing system revision	ontime	29657.838922143	Sum of GTIs [s]
caldbver	4.6.7	 	ontime7	29657.838922143	Sum of GTIs [s]
date	2015-05-21T15:28:15	Date and time of file creation	l1events	27650	Number of level 1 events
revision	1	Processing version of data			

2.1.4 Events

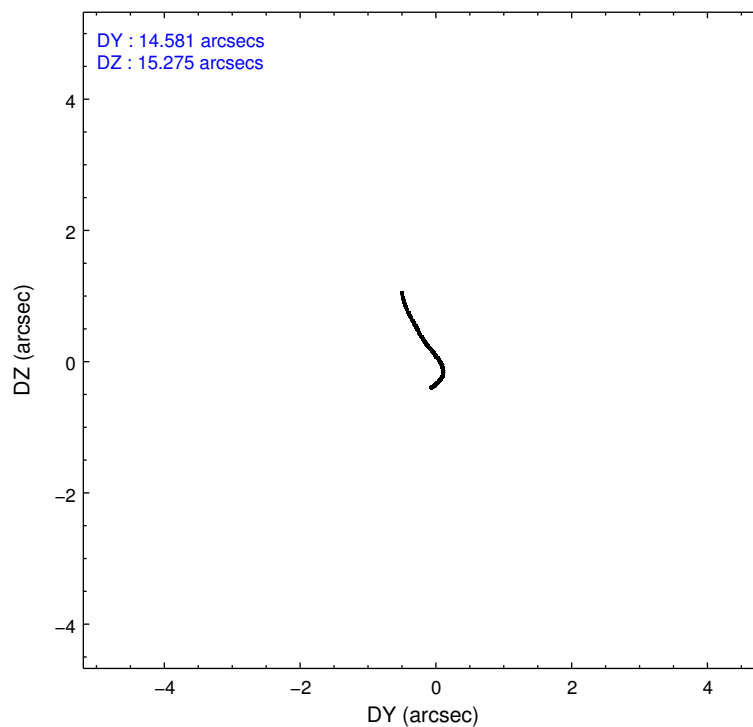
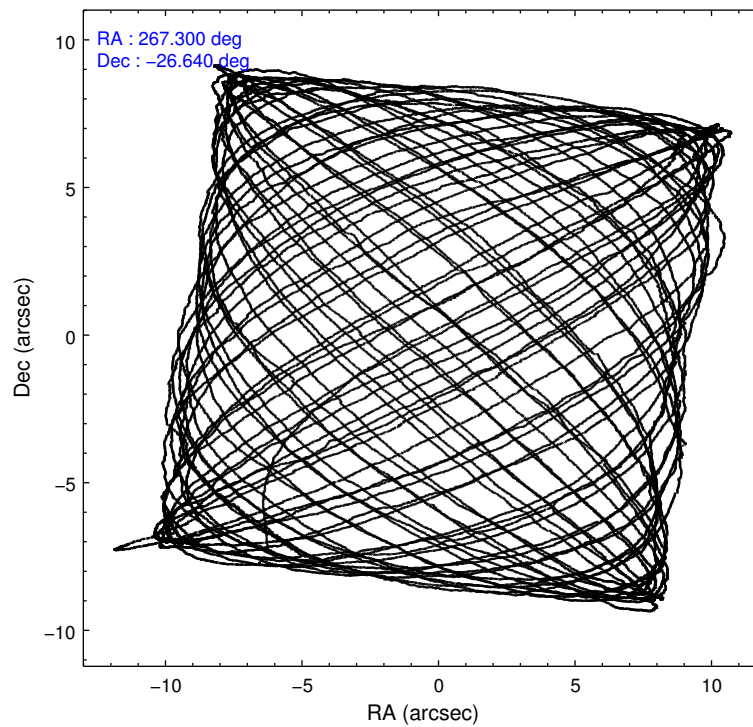
	ccd 7
level 1 events	27650
rejected events	13527
rejected %	48%

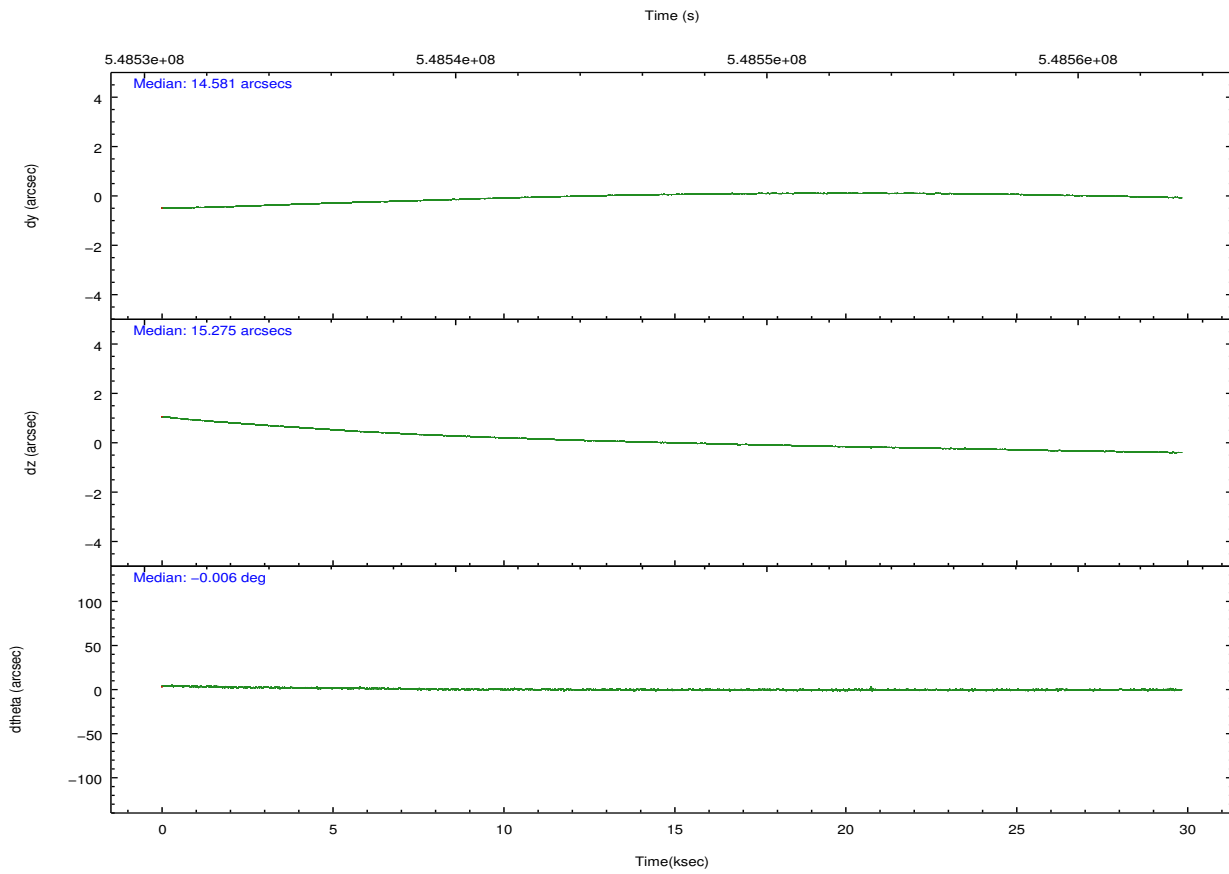
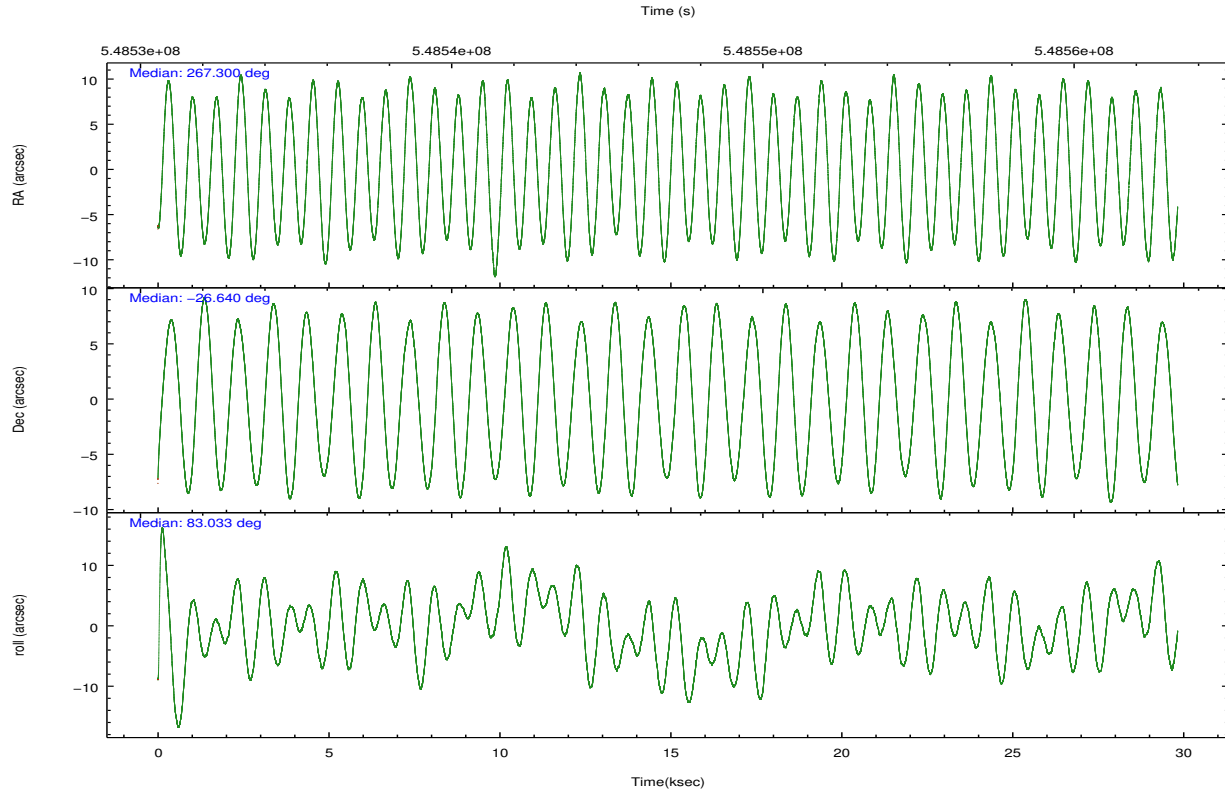
	ccd 7
grade 0 events	1513
	5%
grade 1 events	37
	0%
grade 2 events	2867
	10%
grade 3 events	1789
	6%
grade 4 events	1758
	6%
grade 5 events	2688
	9%
grade 6 events	6196
	22%
grade 7 events	10802
	39%

2.2 Compared Parameters

Parameter	Planned	Actual	Parameter	Planned	Actual
Instrument	ACIS	ACIS	Obspar format version number	7	7
Detector	ACIS-7	ACIS-7	Obspar file type	PREDICTED	ACTUAL
Grating	NONE	NONE	Obspar update status	NONE	UPDATED
Data mode	FAINT	FAINT	Number of optional ACIS chips dropped	0	0
Observation mode	POINTING	POINTING	On-chip summing requested	N	N
[deg] Pointing RA	267.312495	267.3000958578594	Subarray requested	CUSTOM	1/8
[deg] Pointing Dec	-26.664616	-26.63949580279877	Subarray start row	449	449
[deg] Pointing Roll	82.887714	83.03877117931877	Subarray row count	128	128
[mm] SIM focus pos	-0.684267	-0.6828225247311905	Alternating exposures requested	N	N
[mm] SIM defocus	0	0.001444936568705701	[s] Primary exposure time	0.000000	0.4
[mm] SIM translation stage pos	-190.132523	-190.1425803651734			
[mm] SIM translation stage offset	0	0.01005778216563158			
[s] Observation start time (MET)	548532267.184000	548531673.06494			
Observation start date	2015-05-20T18:03:20	2015-05-20T17:54:33			
[s] Observation end time (MET)	548561855.184000	548562080.71665			
Observation end date	2015-05-21T02:16:28	2015-05-21T02:21:20			
Read mode	TIMED	TIMED			

2.3 Aspect





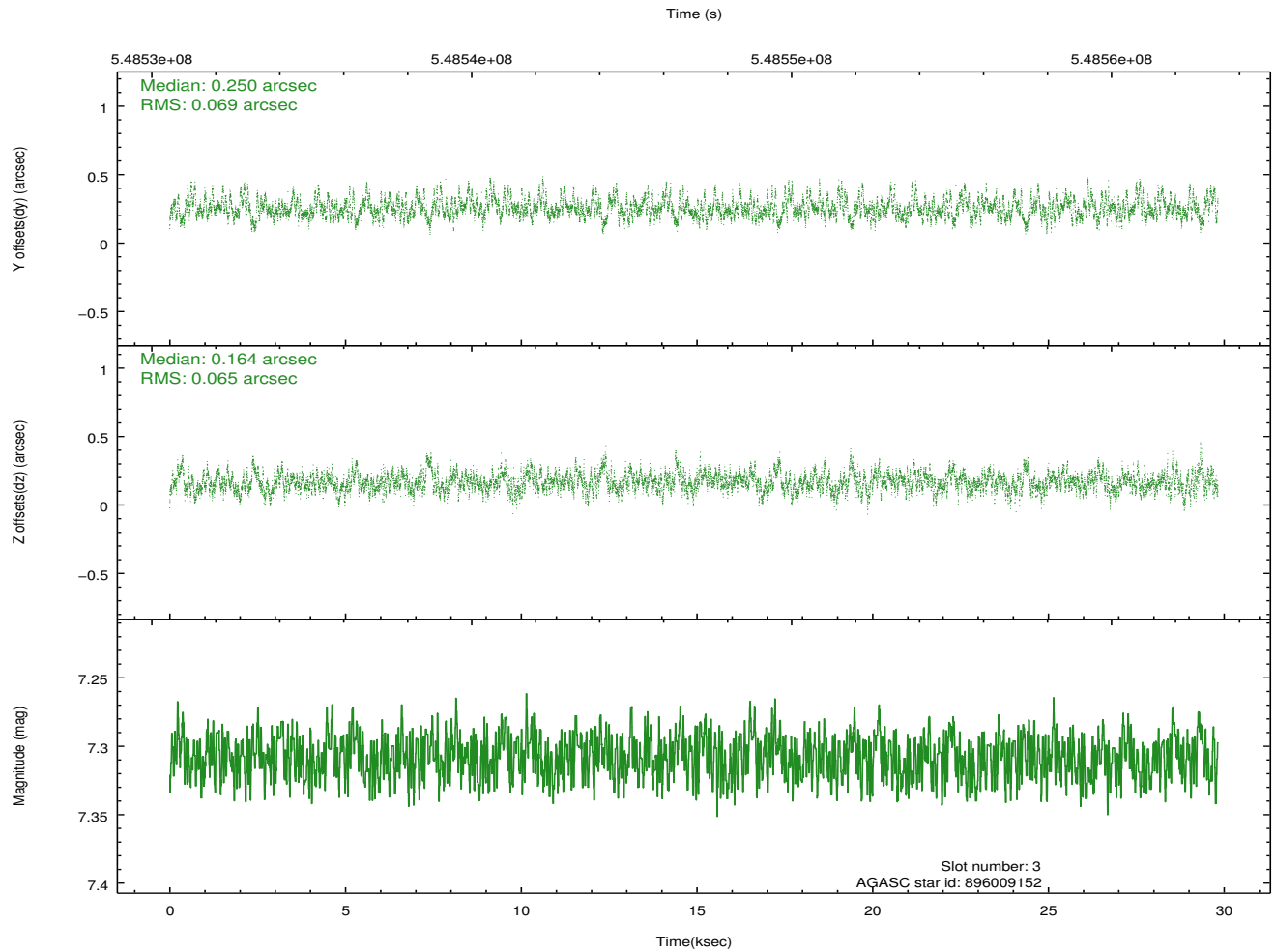
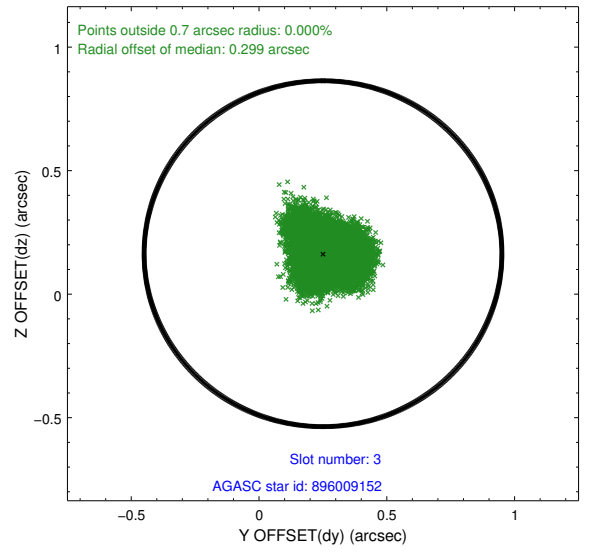
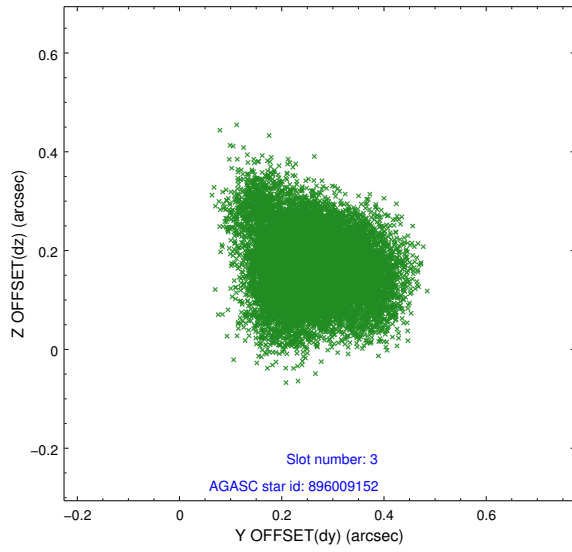
Slot Statistics

slot	status	used	id	mag	n_pts	med_dy	med_dz	dr1	dr2	ra	dec	mean_y	mean_z
0	FID		ACIS-S-4	7.09	7276	0.249	0.007	0.008	0.013	0.000000	0.000000	2146.13	172.01
1	FID		ACIS-S-5	7.11	7275	-0.295	-0.000	0.007	0.011	0.000000	0.000000	-1820.51	165.39
2	FID		ACIS-S-6	7.23	7276	0.018	0.007	0.010	0.016	0.000000	0.000000	394.06	809.20
3	GUIDE	used	896009152	7.31	14551	0.250	0.164	0.100	0.170	267.588100	-27.061669	-1310.14	-1053.57
4	GUIDE	used	897717296	8.24	14549	0.089	0.335	0.093	0.148	267.921819	-26.875322	-514.75	-2035.79
5	GUIDE	used	897718208	7.75	14547	0.075	0.361	0.069	0.116	268.020133	-26.836183	-337.29	-2332.61
6	GUIDE	used	896015112	9.16	14544	-0.303	-0.608	0.114	0.185	266.684847	-26.286161	1095.87	2177.83
7	GUIDE	used	896009584	9.20	14535	-0.107	-0.260	0.136	0.213	266.891313	-26.347528	962.29	1489.43

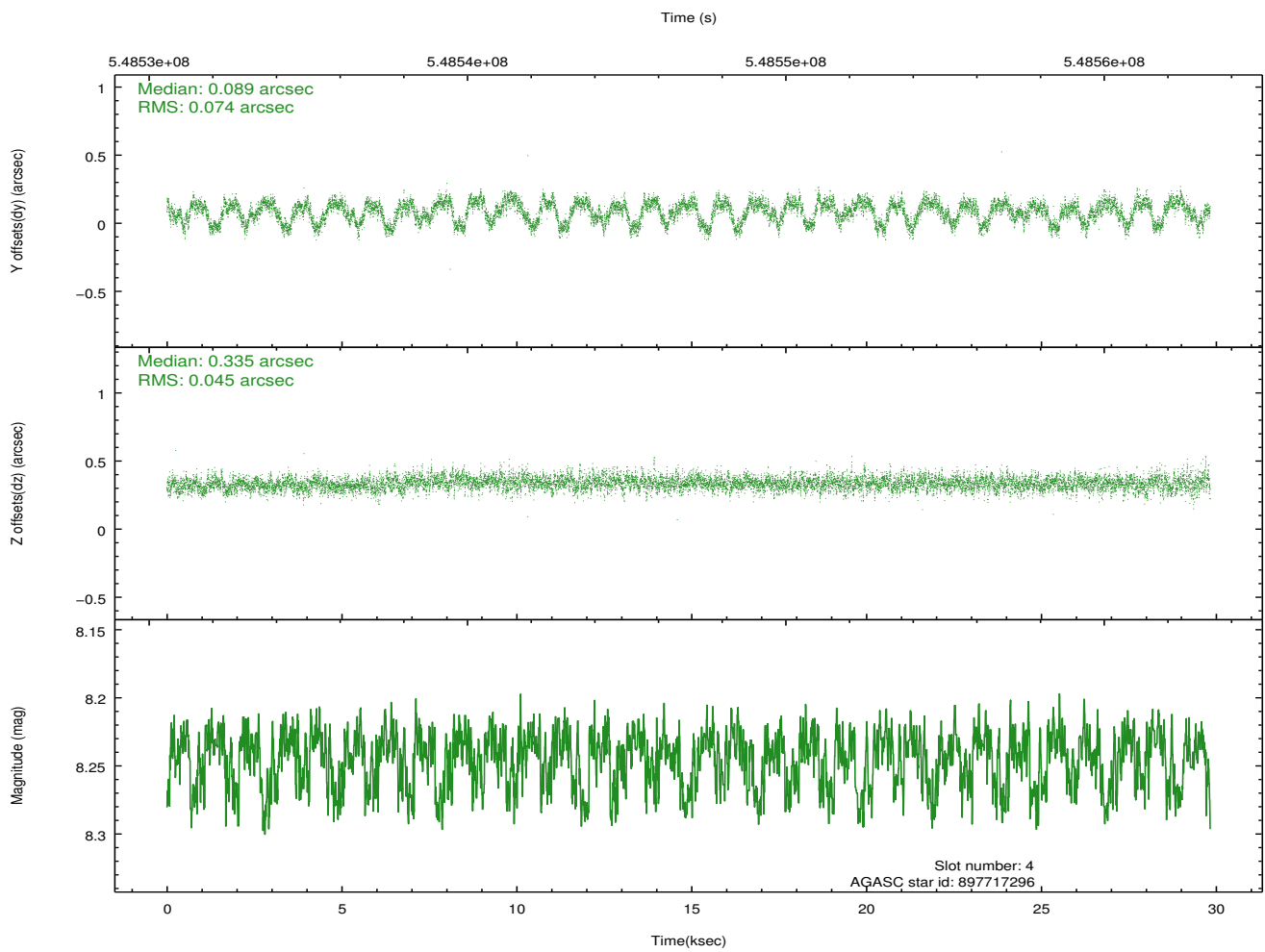
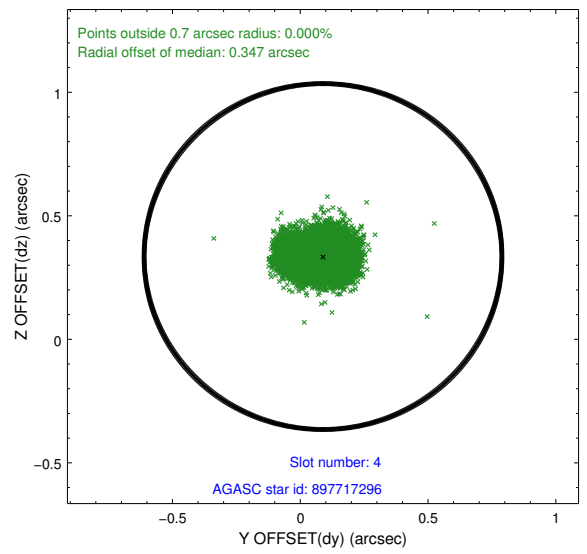
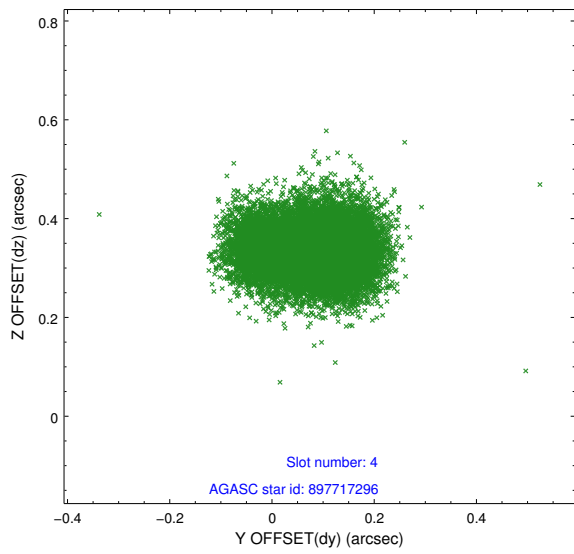
∞

2.4 Star Slots

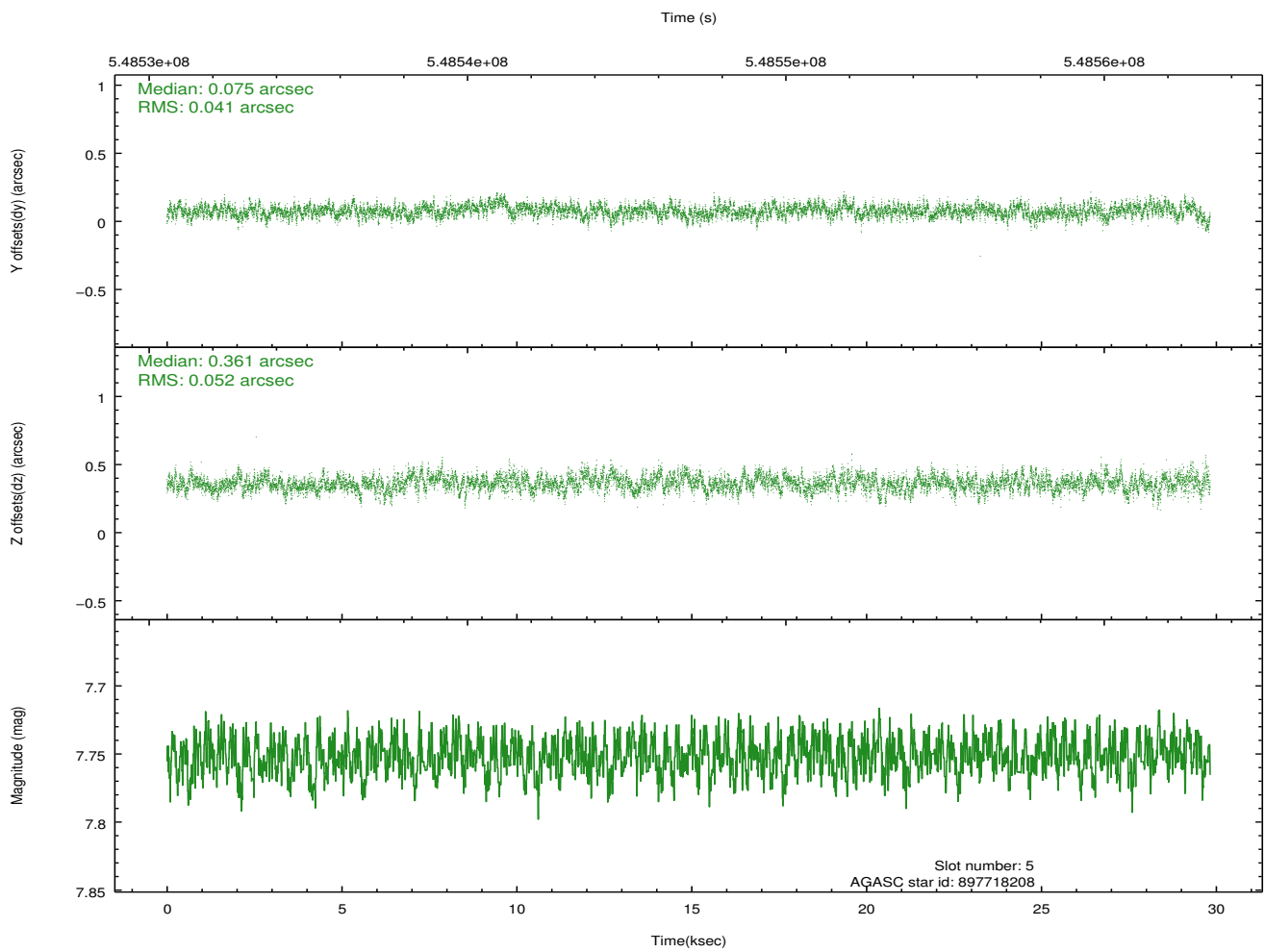
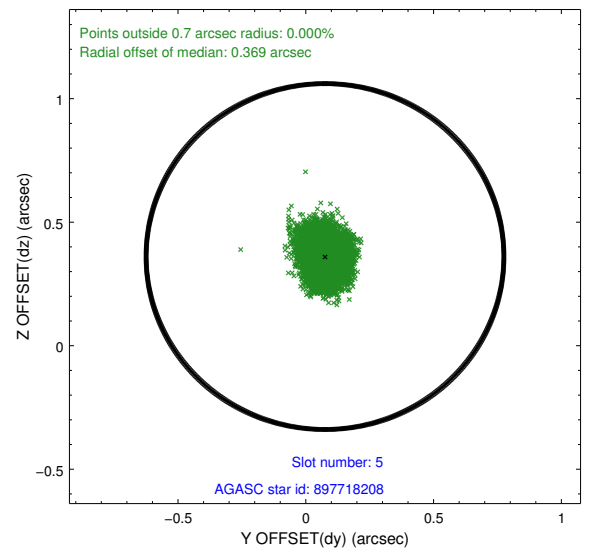
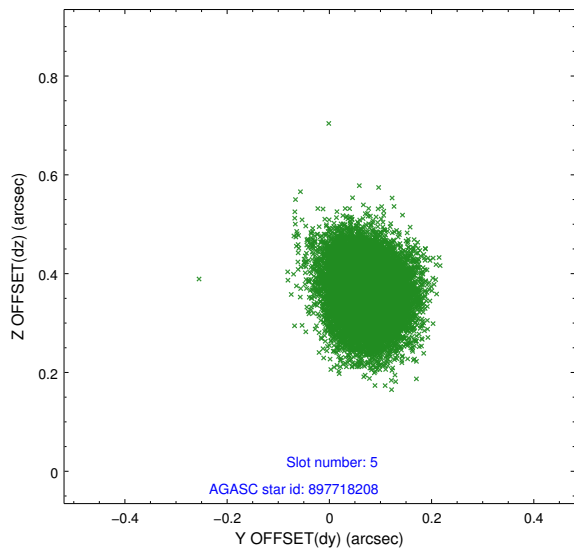
2.4.1 Slot 3



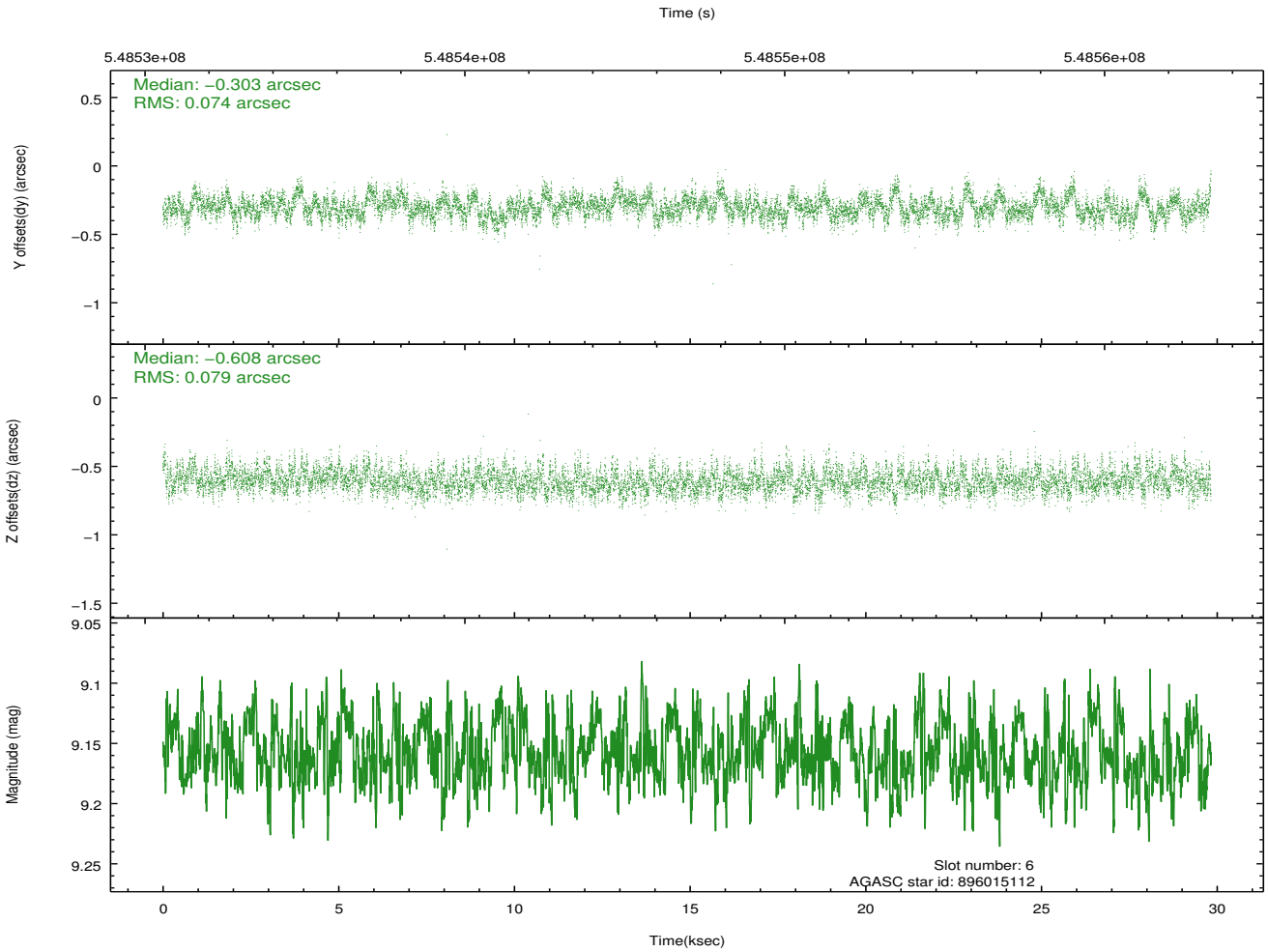
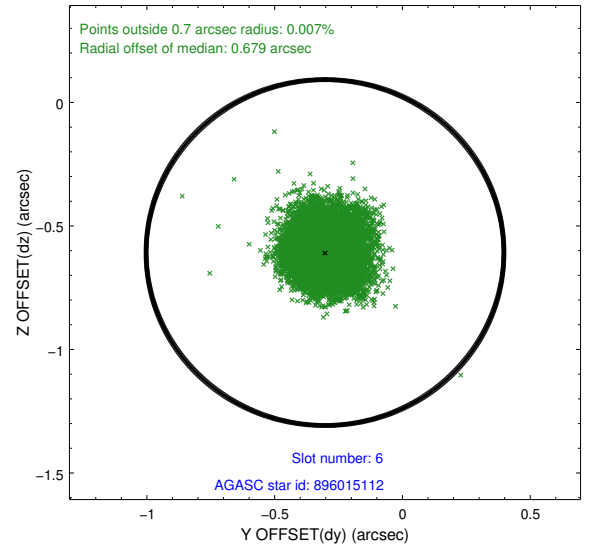
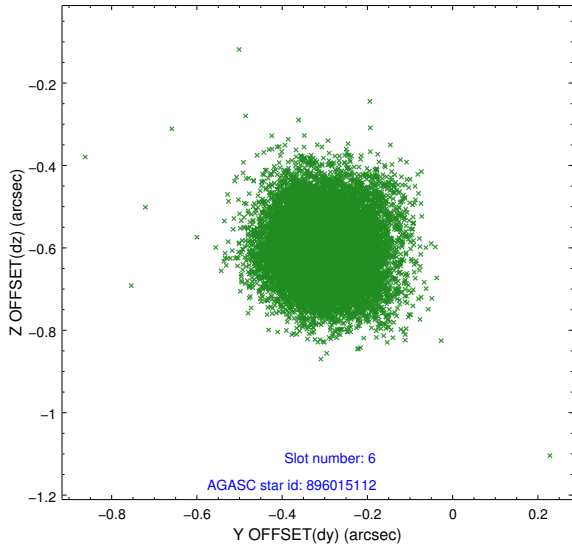
2.4.2 Slot 4



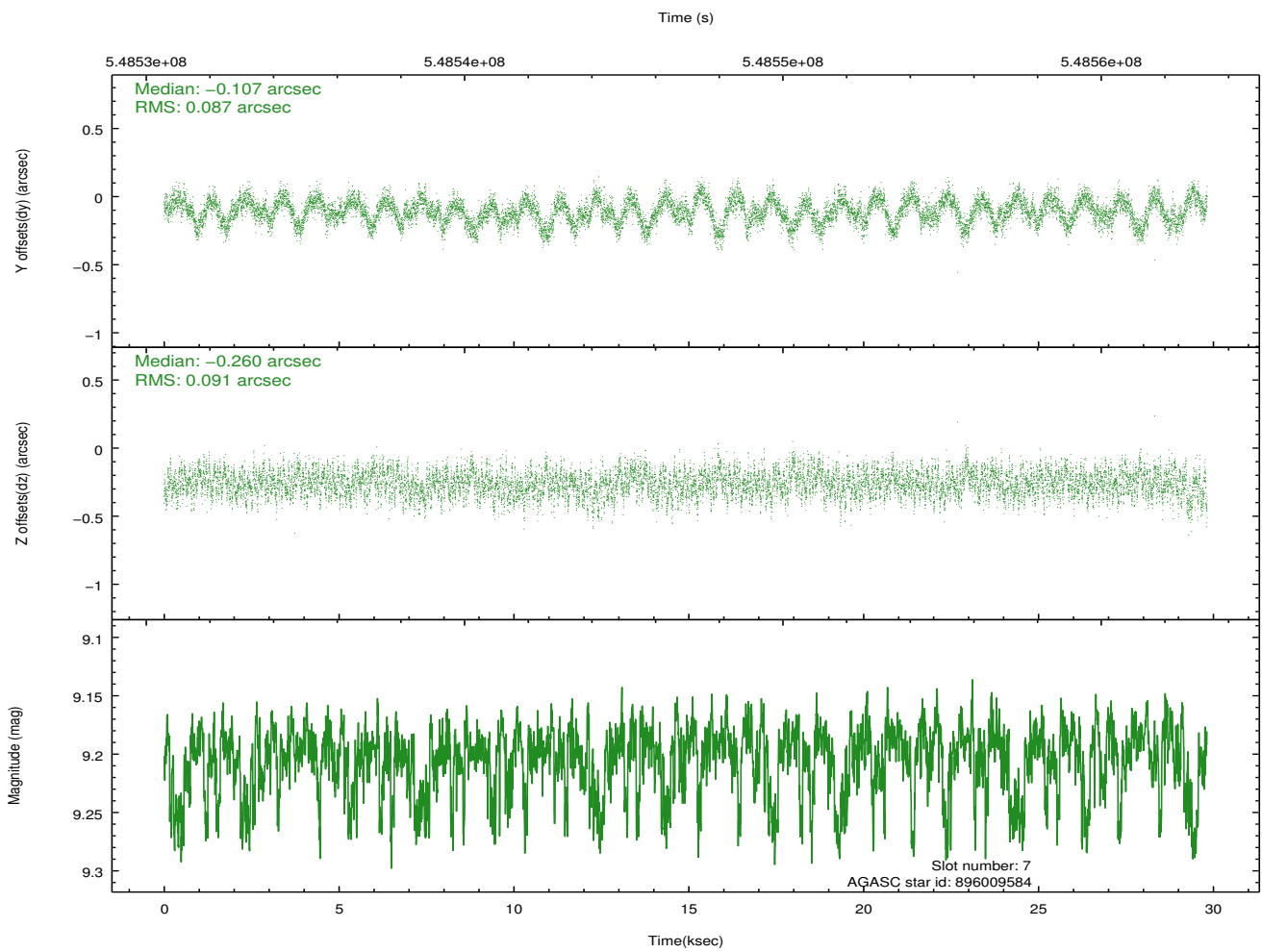
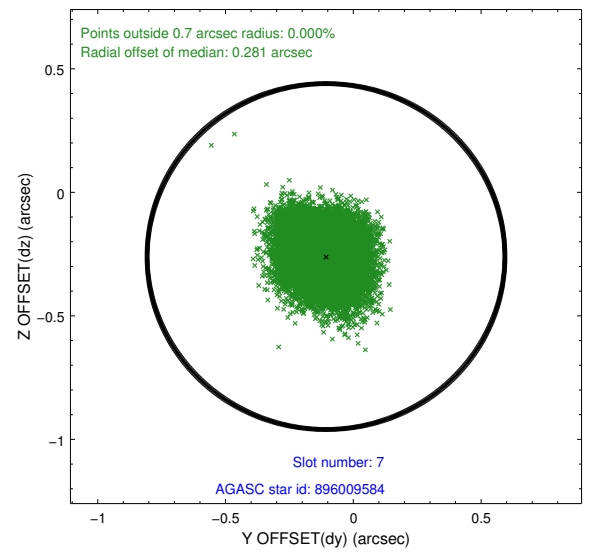
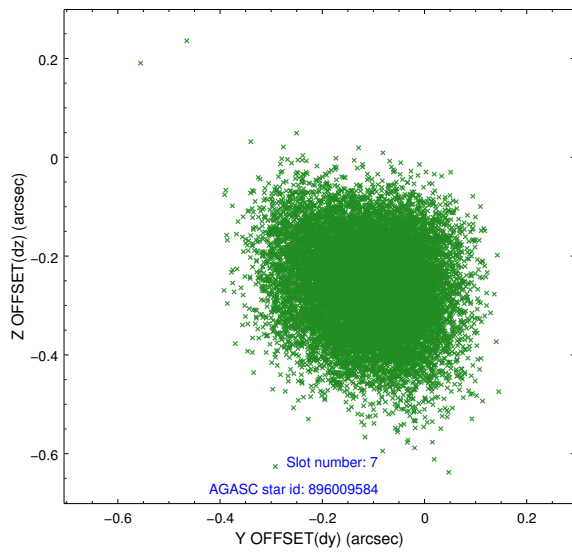
2.4.3 Slot 5



2.4.4 Slot 6

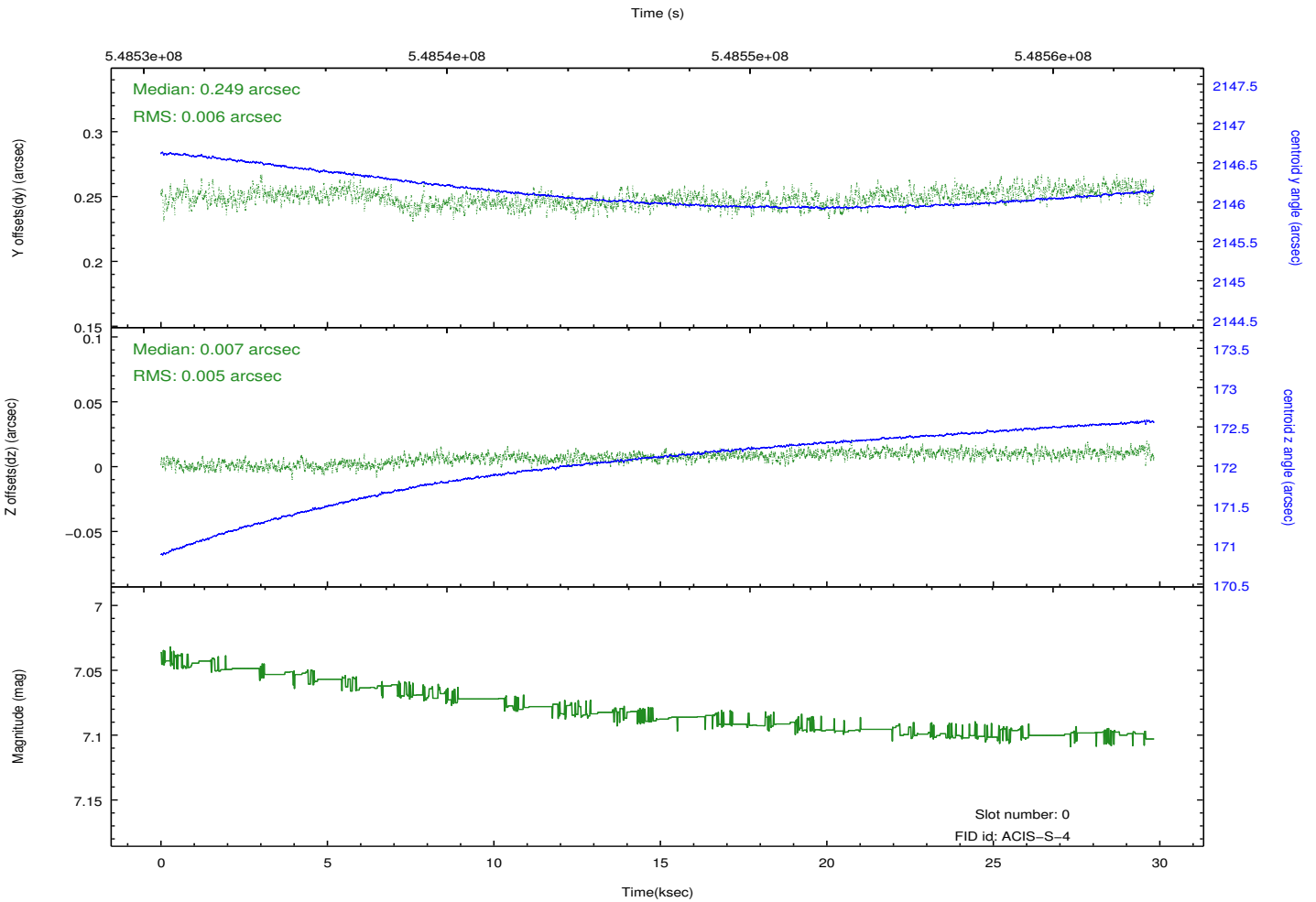
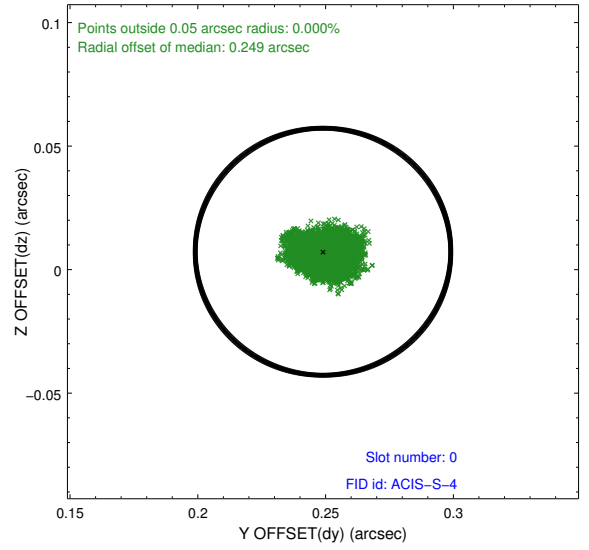
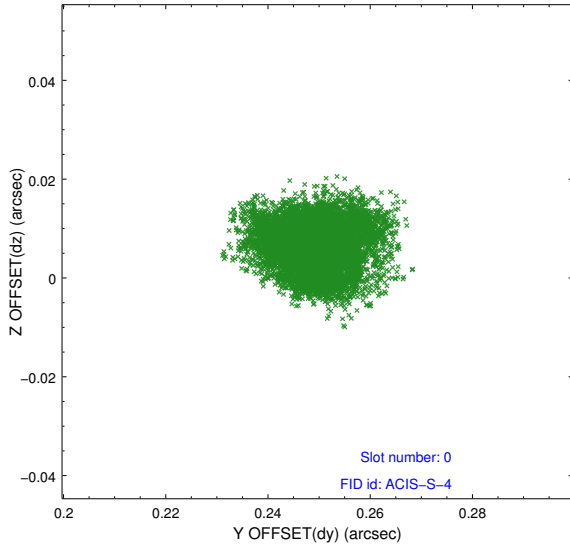


2.4.5 Slot 7

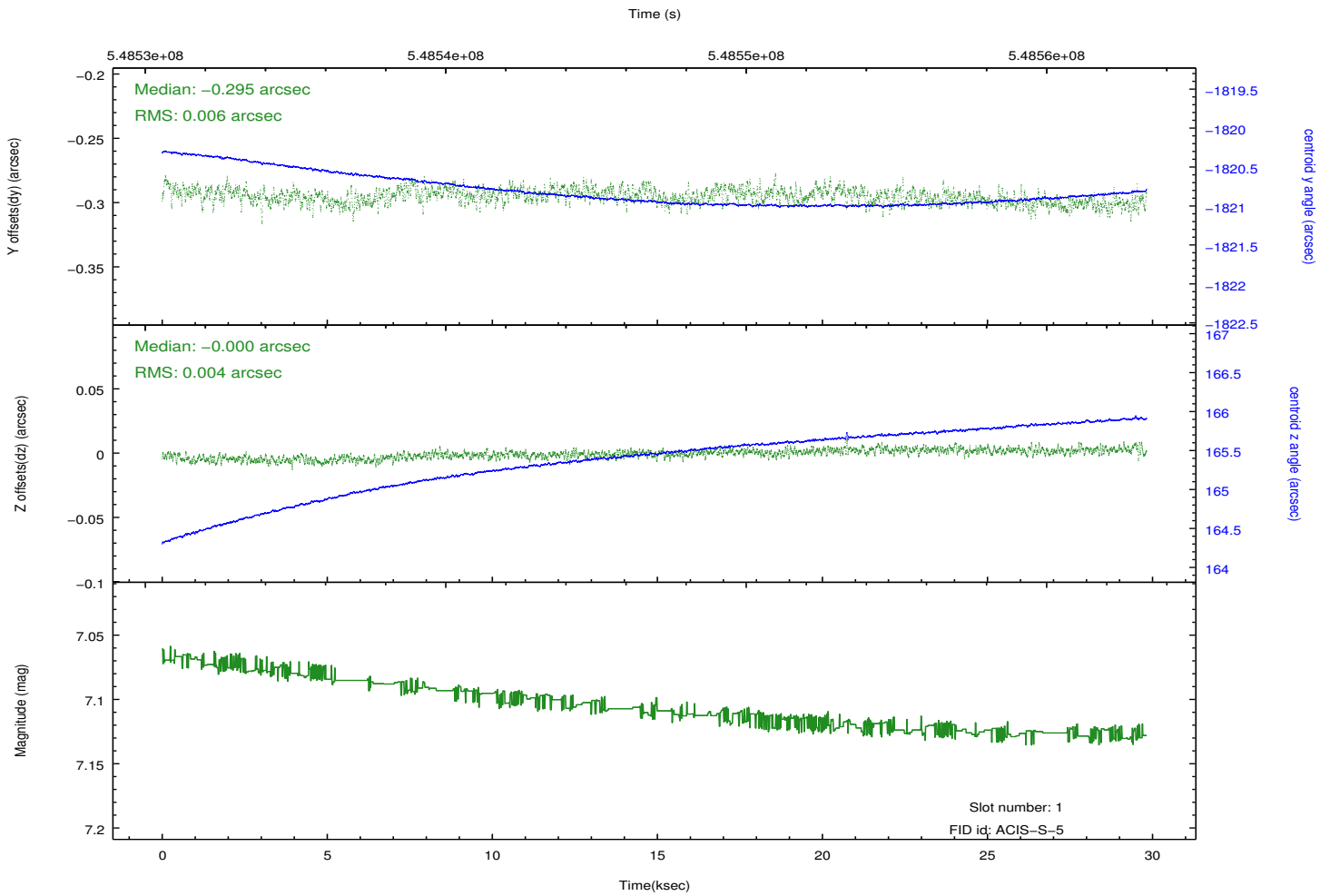
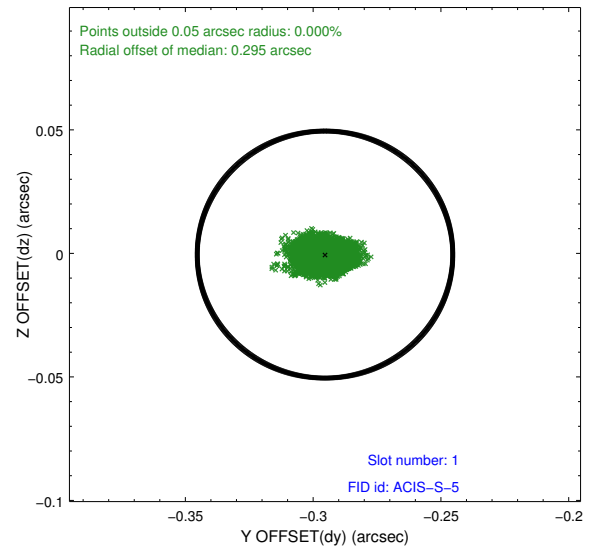
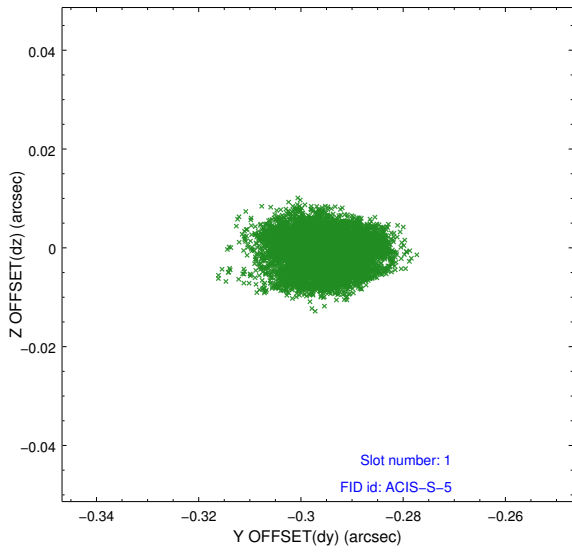


2.5 FID Slots

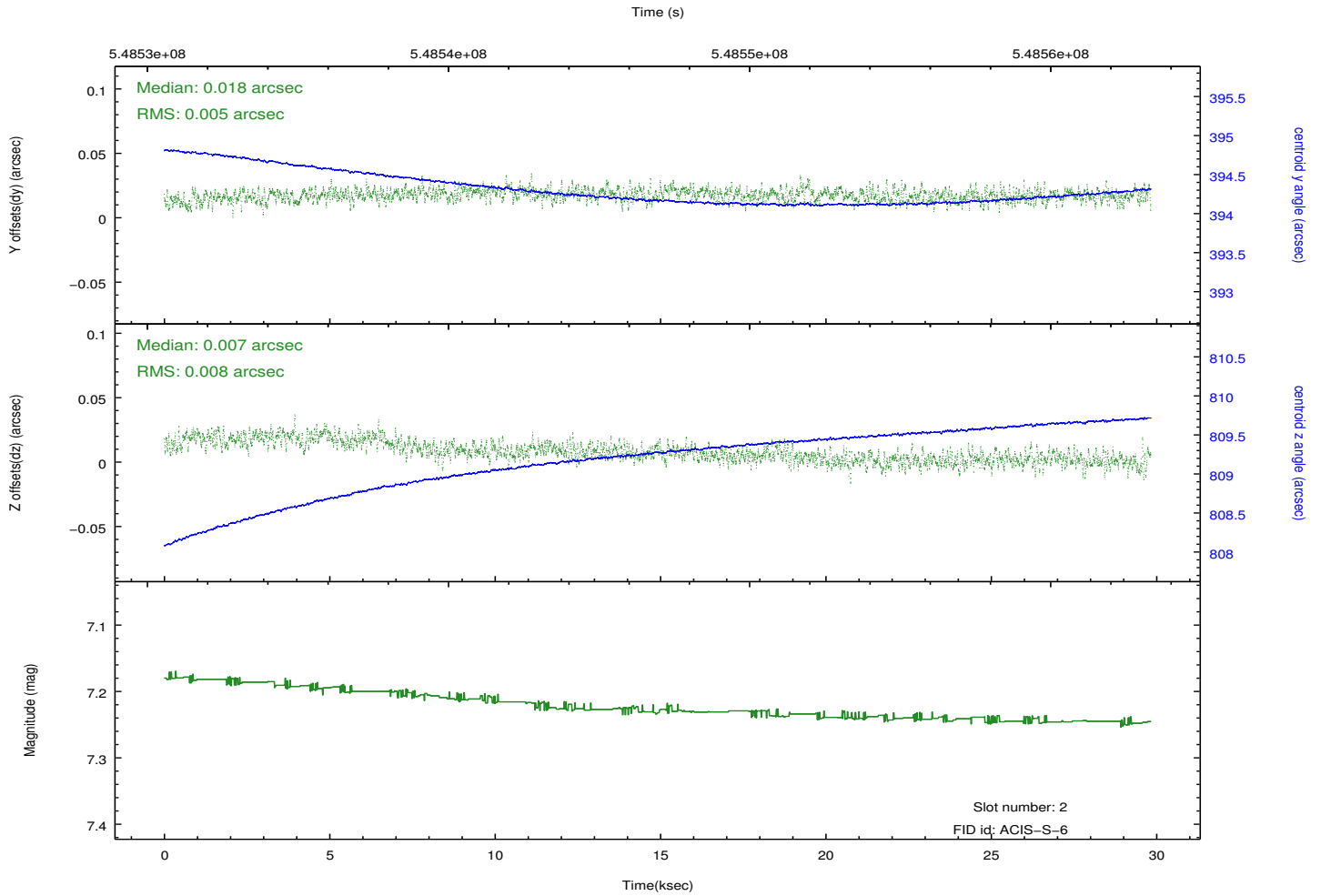
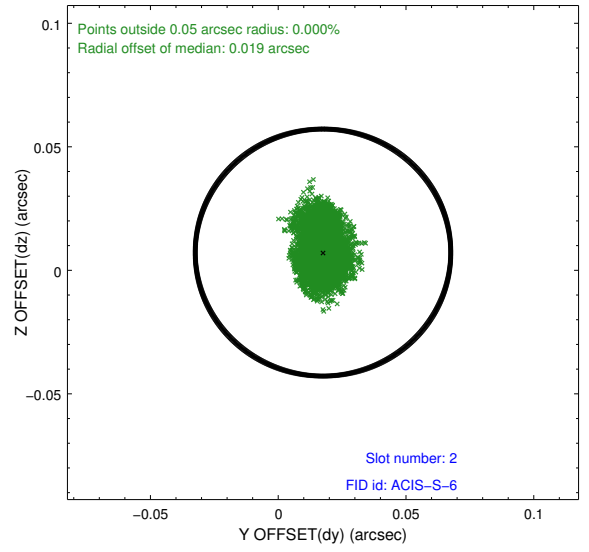
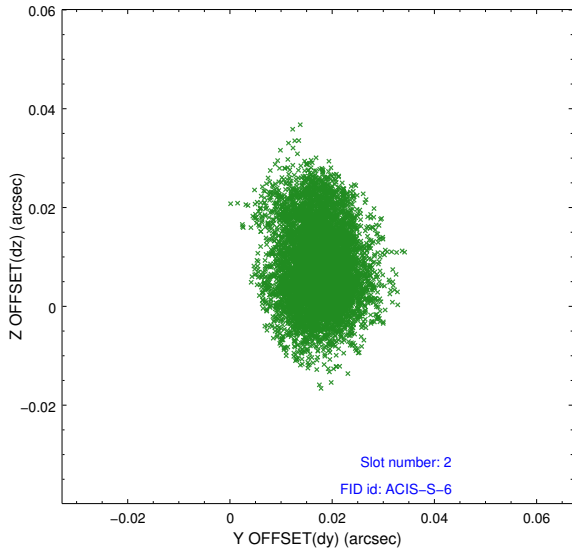
2.5.1 Slot 0



2.5.2 Slot 1



2.5.3 Slot 2



A Summary

A.1 Status

V&V Scientist	Beth Sundheim
V&V Date (YYYY-MM-DD)	2015.05.21
V&V Edition	1
V&V Disposition and Status	OK
V&V Charge Time	29.657838922143

A.2 Comments