

V&V Reference Report

L2 ASCDS Version : 10.3.3

Observation 16963 - L2 Version 1
Chandra X-Ray Center

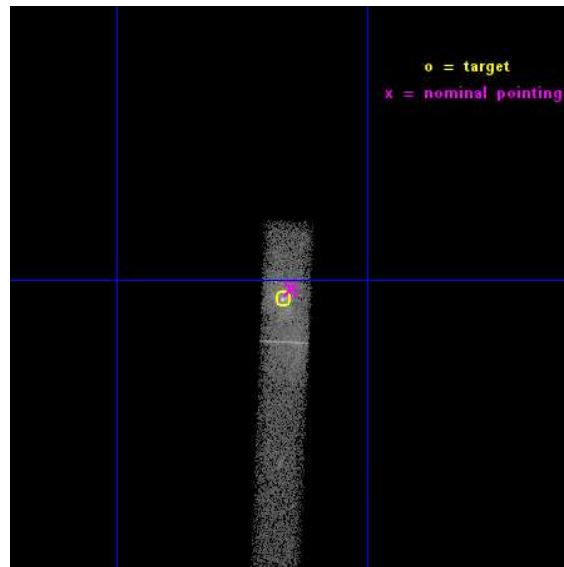
L2 Processing Date : Feb 13 2015

Contents

1	Front	2
2	OBI	3
2.1	OBI	3
2.1.1	Images	3
2.1.2	Bias	3
2.1.3	Parameters	4
2.1.4	Events	4
2.2	Compared Parameters	5
2.3	Aspect	6
2.4	Star Slots	9
2.4.1	Slot 3	9
2.4.2	Slot 4	10
2.4.3	Slot 5	11
2.4.4	Slot 6	12
2.4.5	Slot 7	13
2.5	FID Slots	14
2.5.1	Slot 0	14
2.5.2	Slot 1	15
2.5.3	Slot 2	16
A	Summary	17
A.1	Status	17
A.2	Comments	17

1 Front

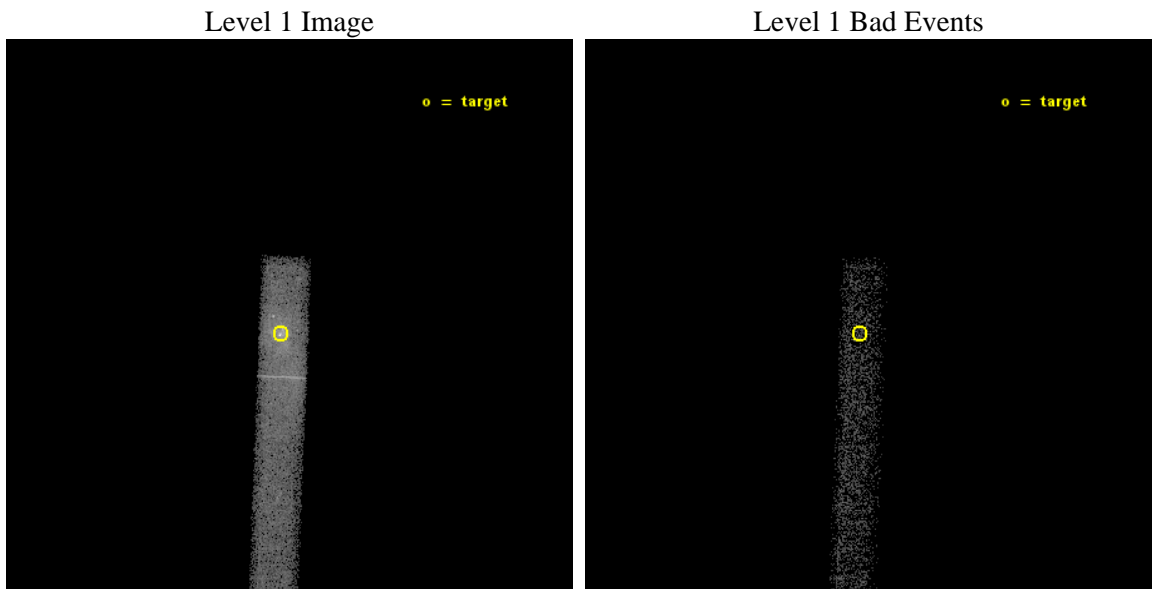
seq_num	601156	Sequence number
obs_id	16963	Observation id
title	Monitoring the Tidal Interaction of the Dusty Object G2 Approaching Sgr A*	Proposal title
observer	Professor Gordon Garmire	Principal investigator
object	SgrA*	Source name
dtcycle	0	
cycle	P	events from which exps? Prim/Second/Both
ra_targ	266.416667	Observer's specified target RA [deg]
dec_targ	-29.007833	Observer's specified target Dec [deg]
ra_nom	266.41255994088	Nominal RA [deg]
dec_nom	-29.003748361279	Nominal Dec [deg]
roll_nom	92.34428463373	Nominal Roll [deg]
revision	1	Processing version of data
ontime	25069.540030479	Sum of GTIs [s]
livetime	22736.749528822	Livetime [s]
ontime7	25069.540030479	Sum of GTIs [s]
l2events	30037	Number of level 2 events



2 OBI

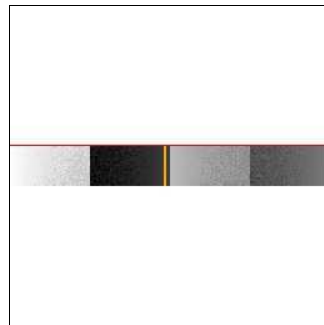
2.1 OBI

2.1.1 Images



2.1.2 Bias

Chip 7



2.1.3 Parameters

obi_num	1	Obi number	sched_exp_time	25000.000000	[s] Scheduled observation exposure time
ascdsver	10.3.3	Processing system revision	ontime	25069.540030479	Sum of GTIs [s]
caldbver	4.6.6	 	ontime7	25069.540030479	Sum of GTIs [s]
date	2015-02-13T14:09:31	Date and time of file creation	l1events	43135	Number of level 1 events
revision	1	Processing version of data			

2.1.4 Events

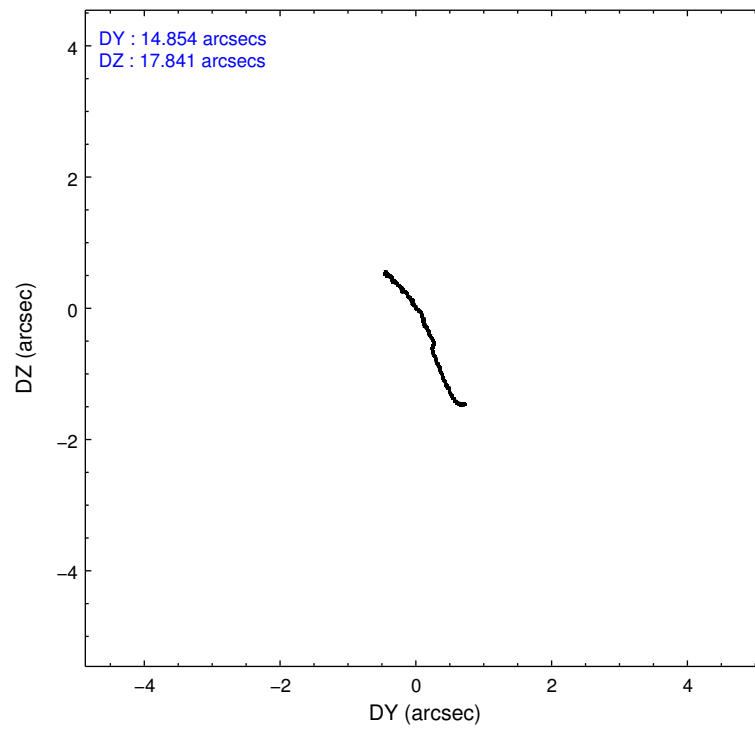
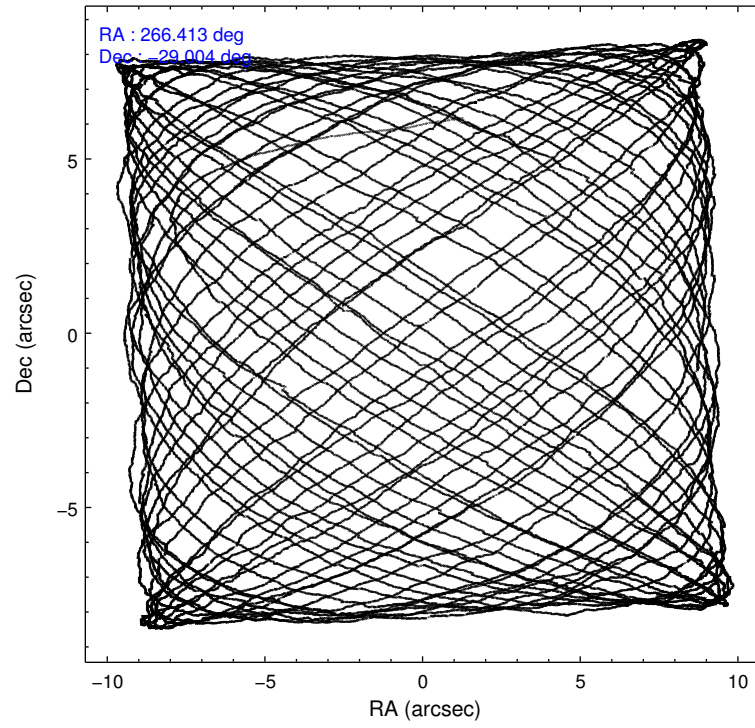
	ccd 7
level 1 events	43135
rejected events	12437
rejected %	28%

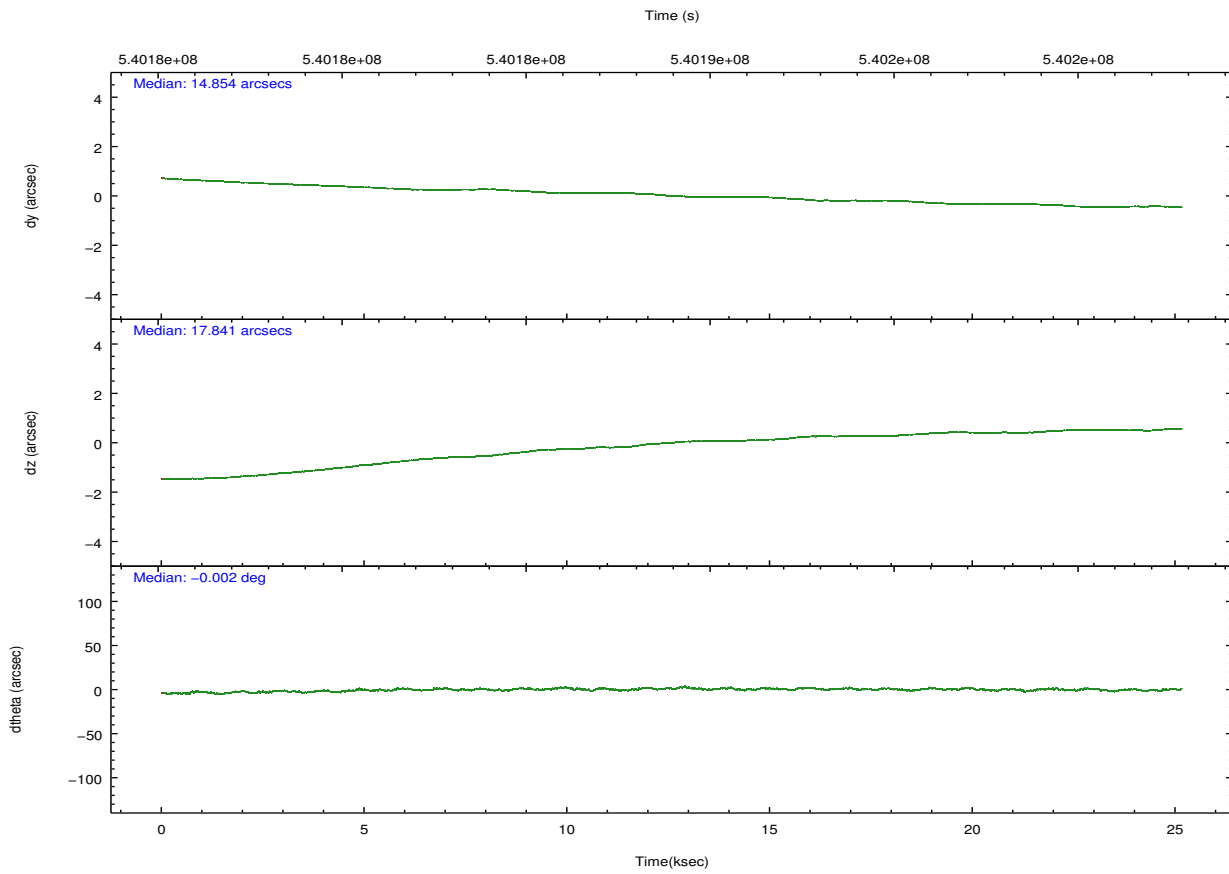
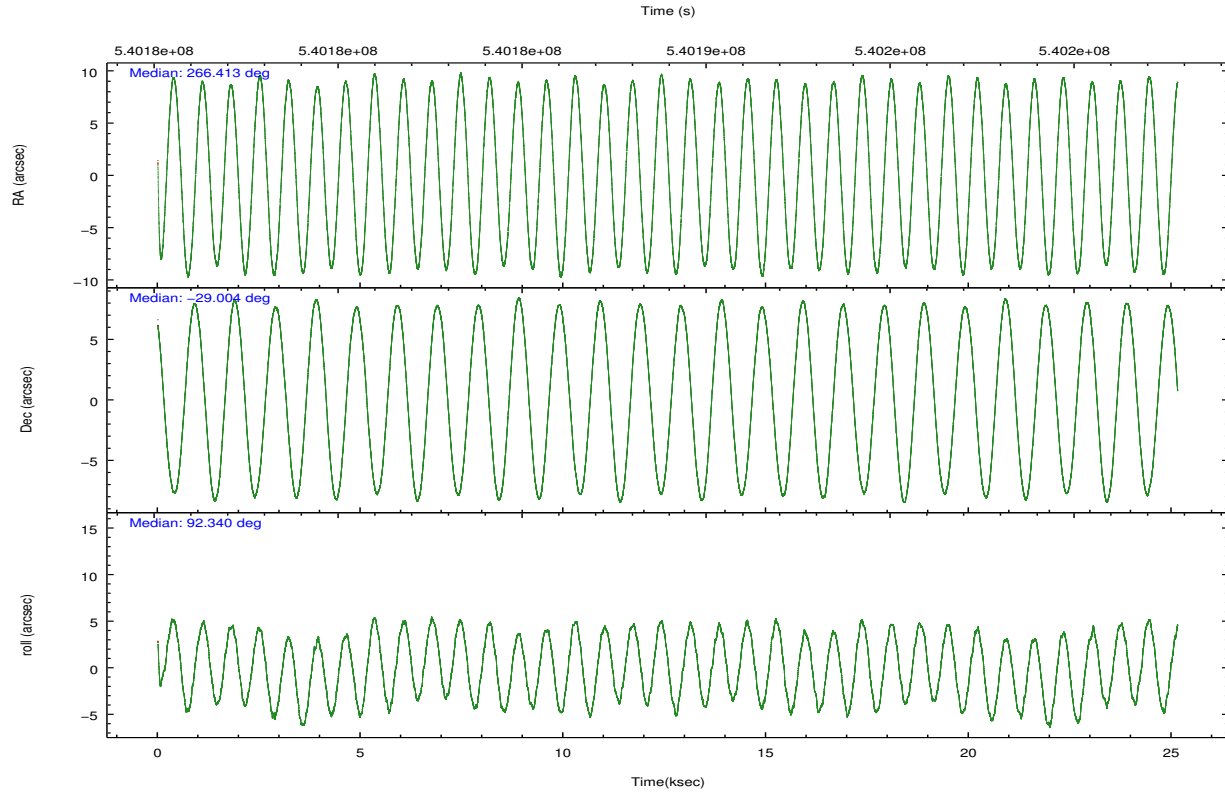
	ccd 7
grade 0 events	5181
	12%
grade 1 events	37
	0%
grade 2 events	6762
	15%
grade 3 events	3535
	8%
grade 4 events	3441
	7%
grade 5 events	2538
	5%
grade 6 events	11779
	27%
grade 7 events	9862
	22%

2.2 Compared Parameters

Parameter	Planned	Actual	Parameter	Planned	Actual
Instrument	ACIS	ACIS	Obspar format version number	7	7
Detector	ACIS-7	ACIS-7	Obspar file type	PREDICTED	ACTUAL
Grating	NONE	NONE	Obspar update status	NONE	UPDATED
Data mode	FAINT	FAINT	Number of optional ACIS chips dropped	0	0
Observation mode	POINTING	POINTING	On-chip summing requested	N	N
[deg] Pointing RA	266.429707	266.4125599408779	Subarray requested	CUSTOM	1/8
[deg] Pointing Dec	-29.026740	-29.00374836127941	Subarray start row	449	449
[deg] Pointing Roll	92.195976	92.34428463373004	Subarray row count	128	128
[s] Window start time (MET)	539827267.184000	539827267.184000	Alternating exposures requested	N	N
[s] Window stop time (MET)	541814467.184000	541814467.184000	[s] Primary exposure time	0.000000	0.4
[mm] SIM focus pos	-0.684267	-0.6828225247311905			
[mm] SIM defocus	0	0.001444936568705701			
[mm] SIM translation stage pos	-190.132523	-190.1400660498719			
[mm] SIM translation stage offset	0	0.00754346686406393			
[s] Observation start time (MET)	540176548.184000	540175324.73455			
Observation start date	2015-02-13T01:01:21	2015-02-13T00:42:04			
[s] Observation end time (MET)	540201548.184000	540202186.91105			
Observation end date	2015-02-13T07:58:01	2015-02-13T08:09:46			
Read mode	TIMED	TIMED			

2.3 Aspect





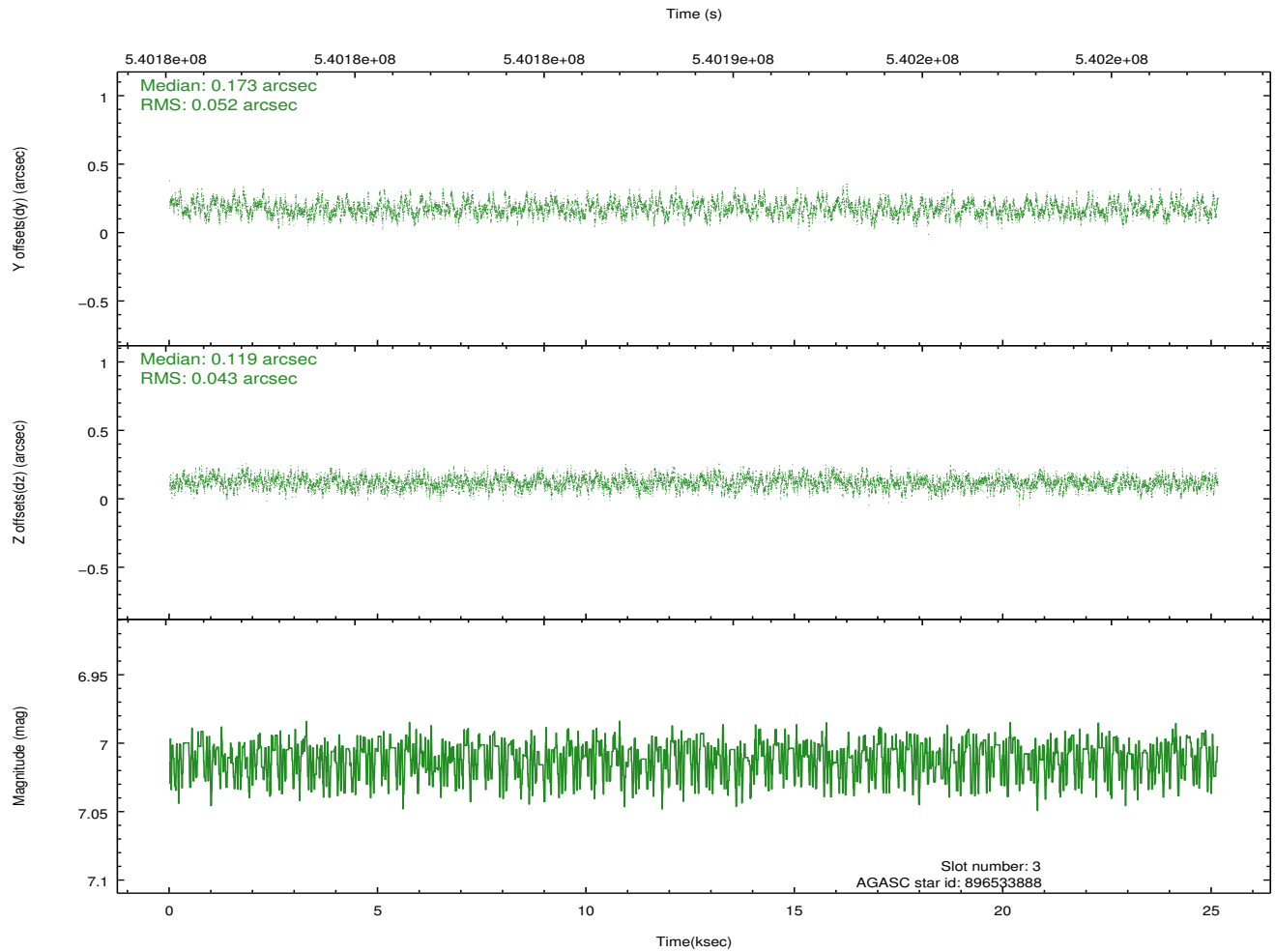
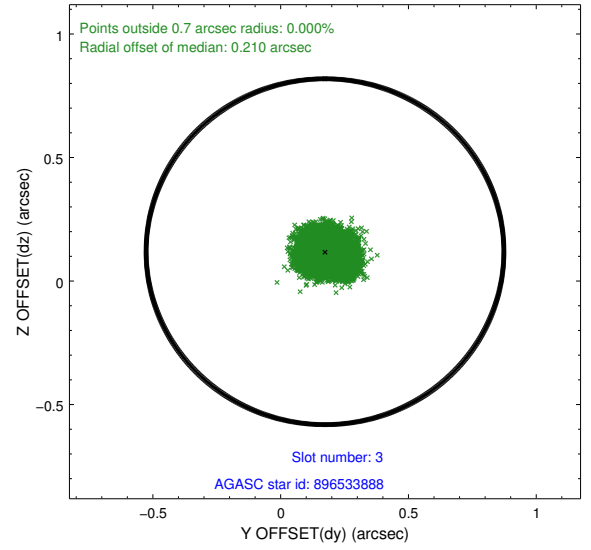
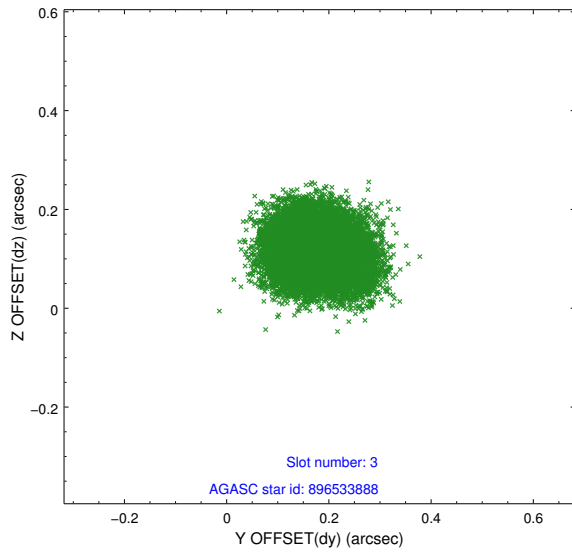
Slot Statistics

slot	status	used	id	mag	n_pts	med_dy	med_dz	dr1	dr2	ra	dec	mean_y	mean_z
0	FID		ACIS-S-2	7.11	6133	0.022	-0.071	0.017	0.049	0.000000	0.000000	-767.88	-1739.12
1	FID		ACIS-S-5	7.24	6134	-0.177	0.030	0.020	0.059	0.000000	0.000000	-1821.19	162.85
2	FID		ACIS-S-6	7.35	6135	0.130	0.052	0.013	0.022	0.000000	0.000000	393.78	806.85
3	GUIDE	used	896533888	7.01	12269	0.173	0.119	0.073	0.115	266.666434	-29.392757	-1345.52	-691.31
4	GUIDE	used	896537176	8.01	12268	-0.136	-0.018	0.092	0.143	266.498272	-28.678259	1245.17	-264.31
5	GUIDE	used	896404568	7.82	12267	-0.419	-0.551	0.080	0.127	265.687293	-28.431080	2225.27	2266.58
6	GUIDE	used	896537776	7.52	12268	0.376	0.115	0.068	0.109	266.655684	-29.665673	-2325.49	-617.98
7	GUIDE	used	896538208	7.97	12264	0.002	0.340	0.070	0.116	267.176969	-28.671626	1179.79	-2406.76

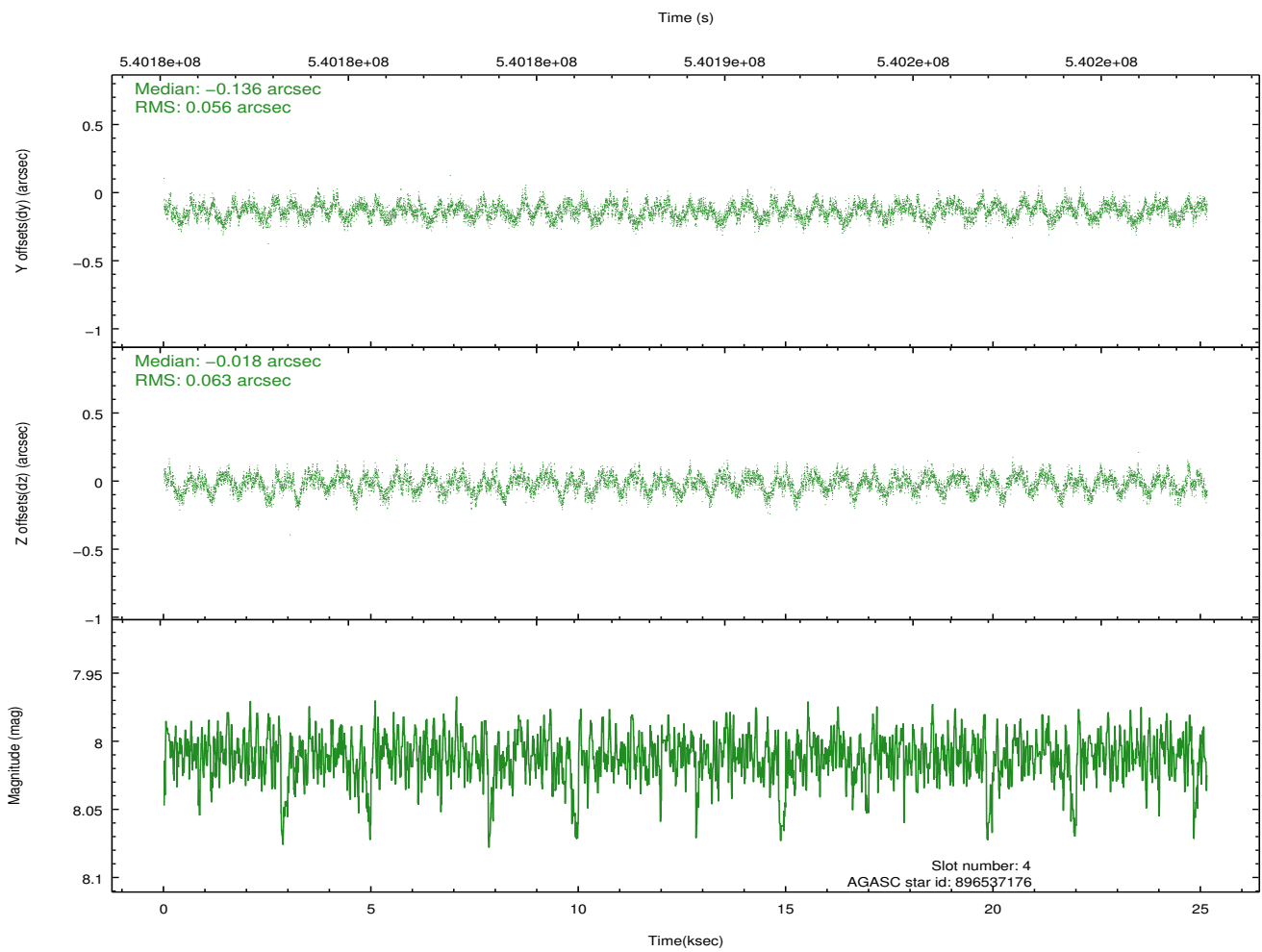
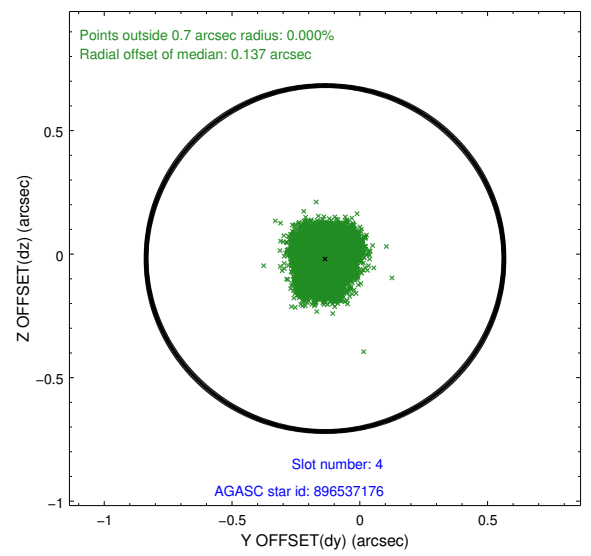
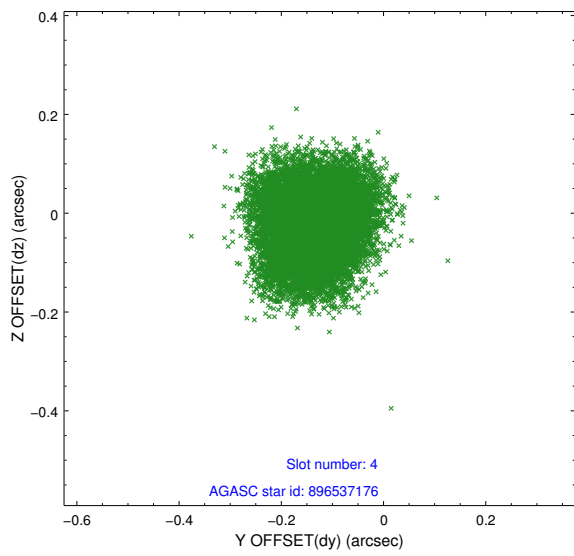
∞

2.4 Star Slots

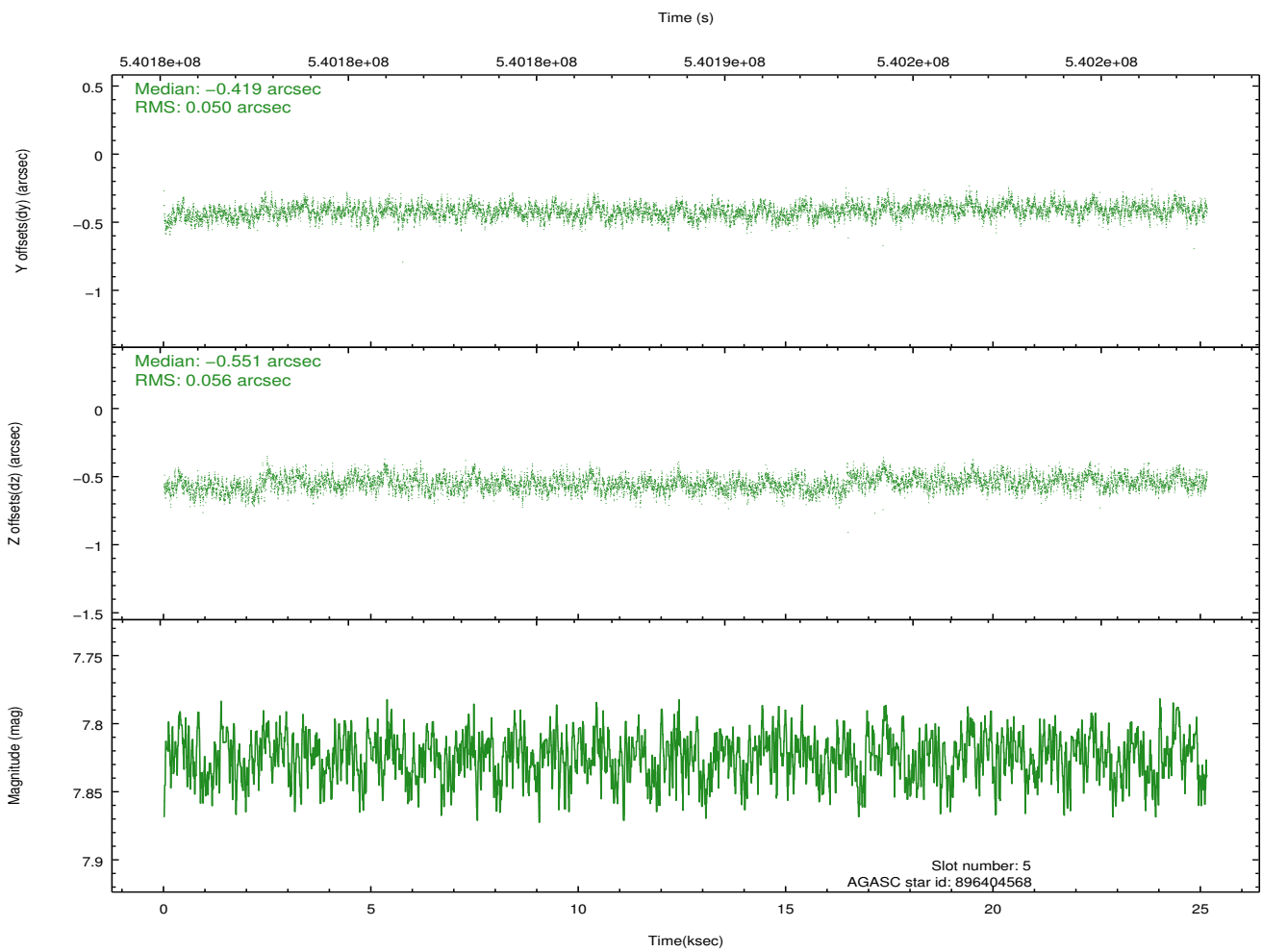
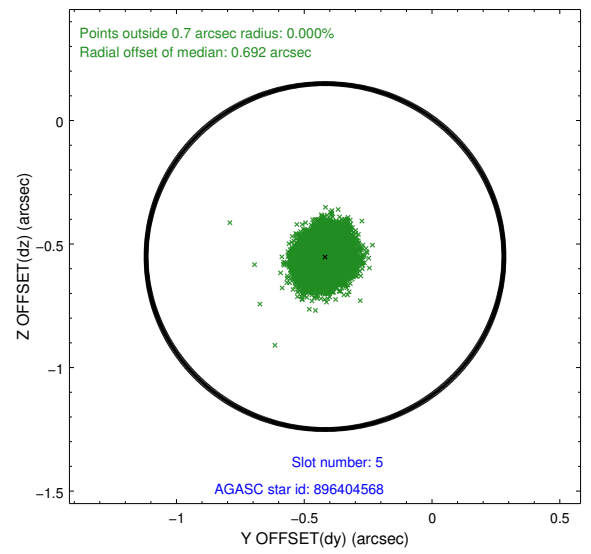
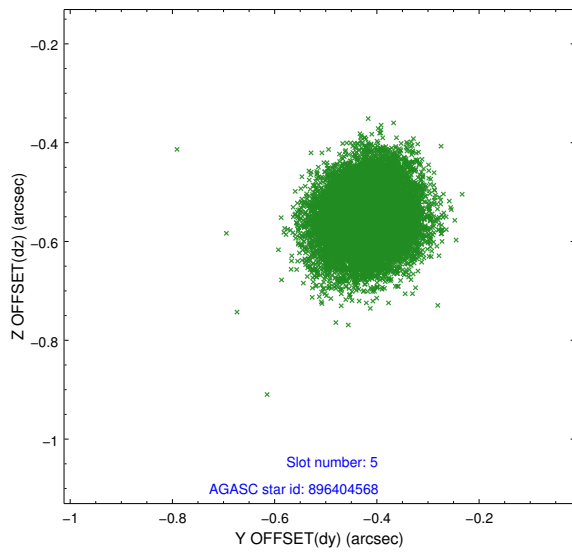
2.4.1 Slot 3



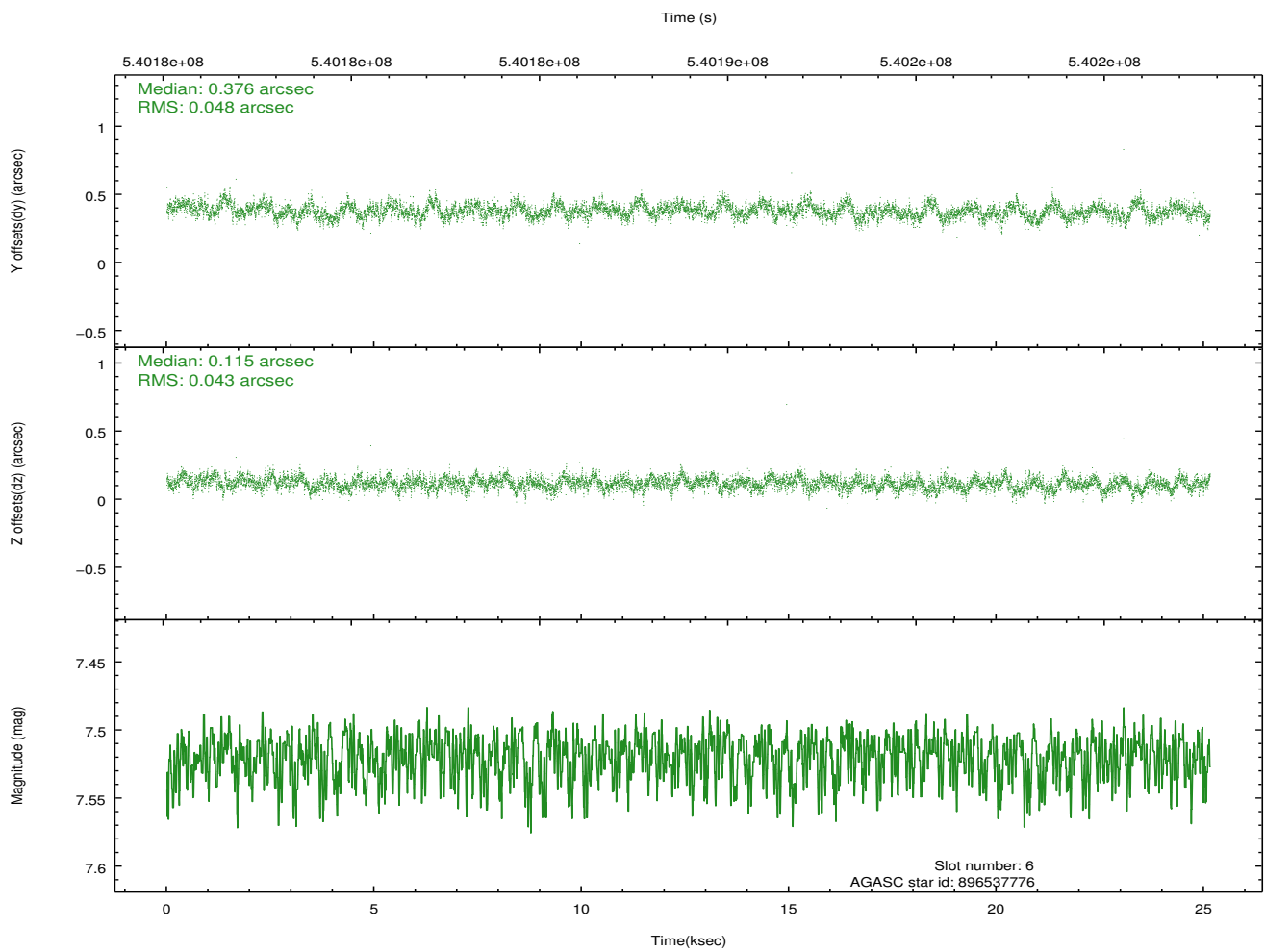
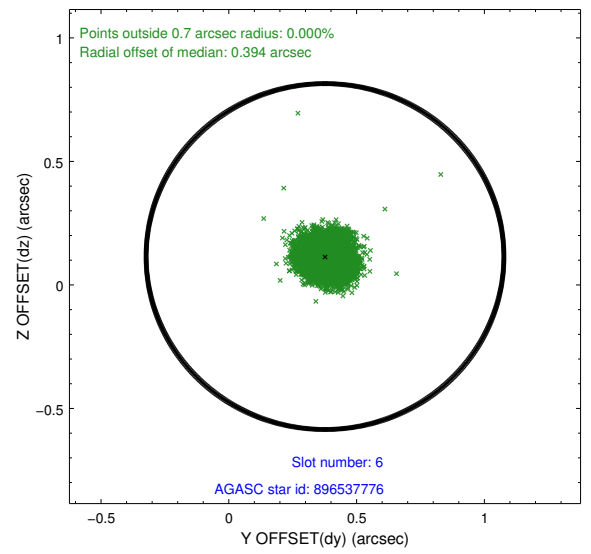
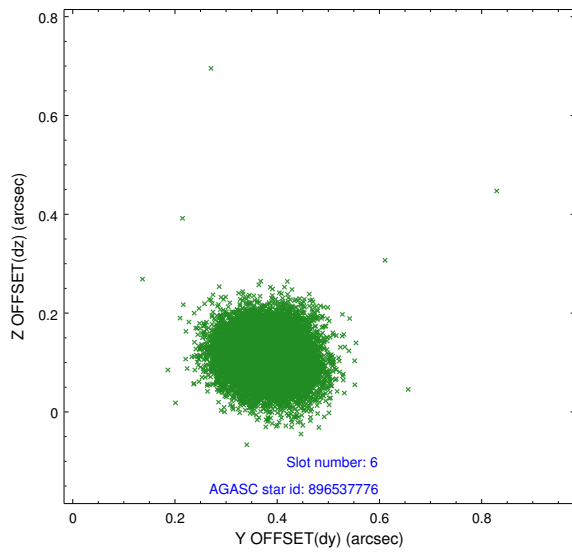
2.4.2 Slot 4



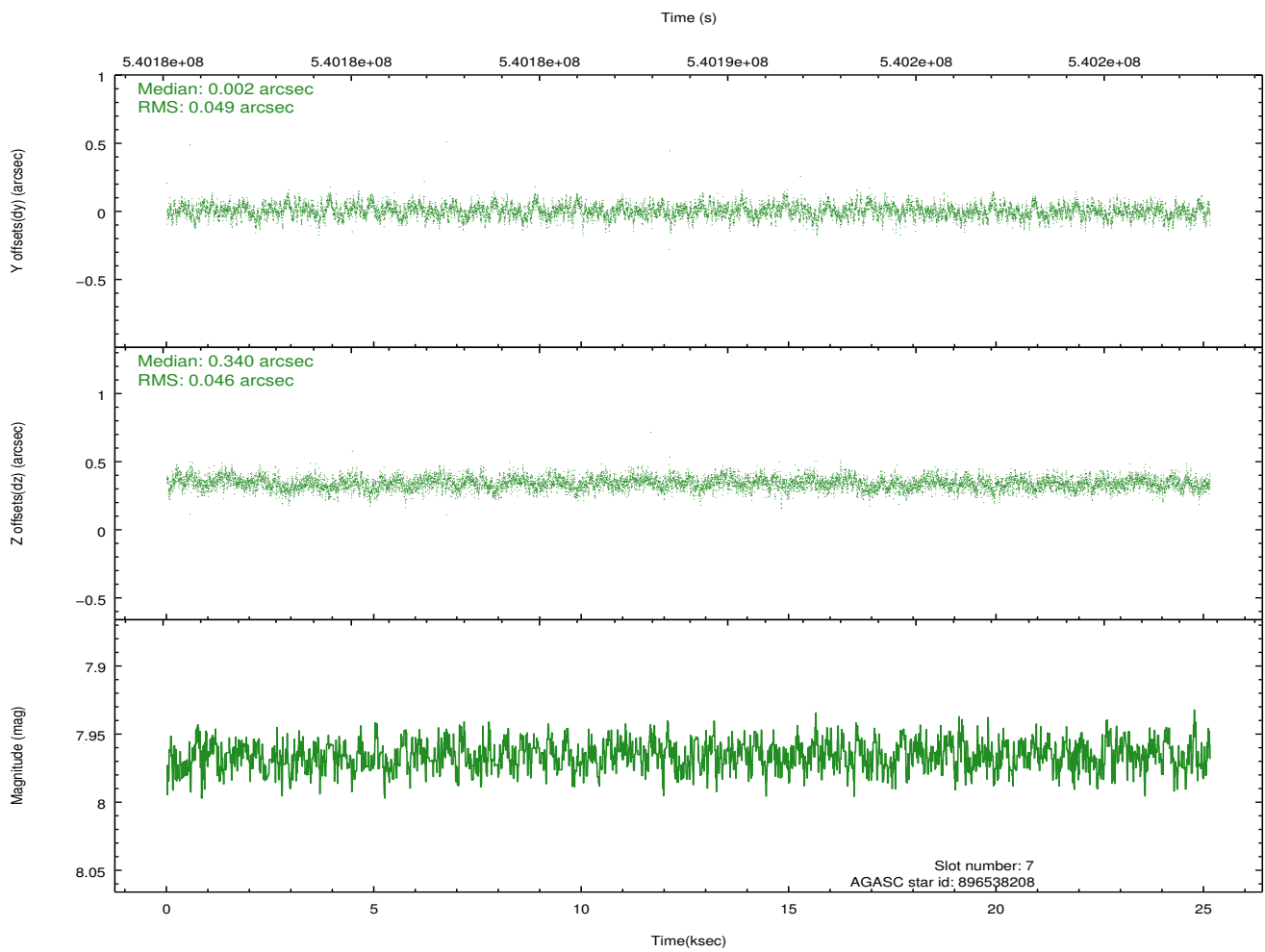
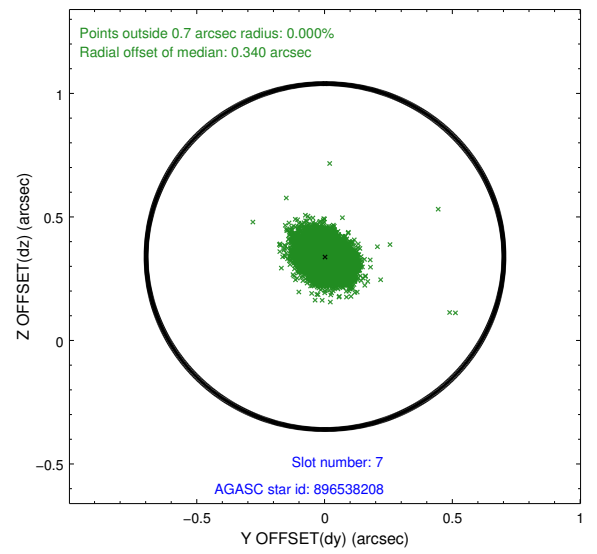
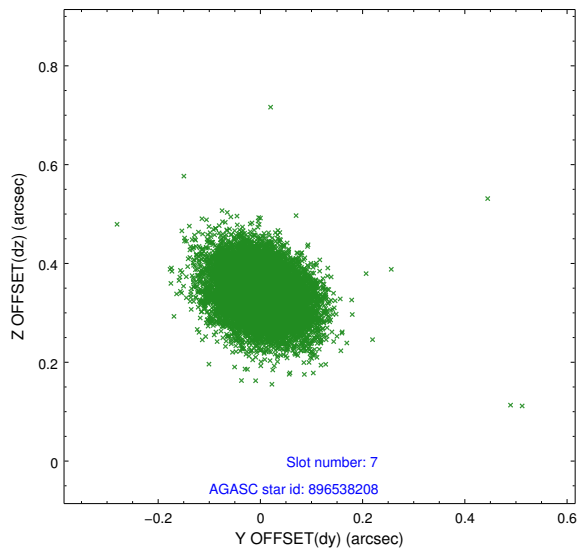
2.4.3 Slot 5



2.4.4 Slot 6

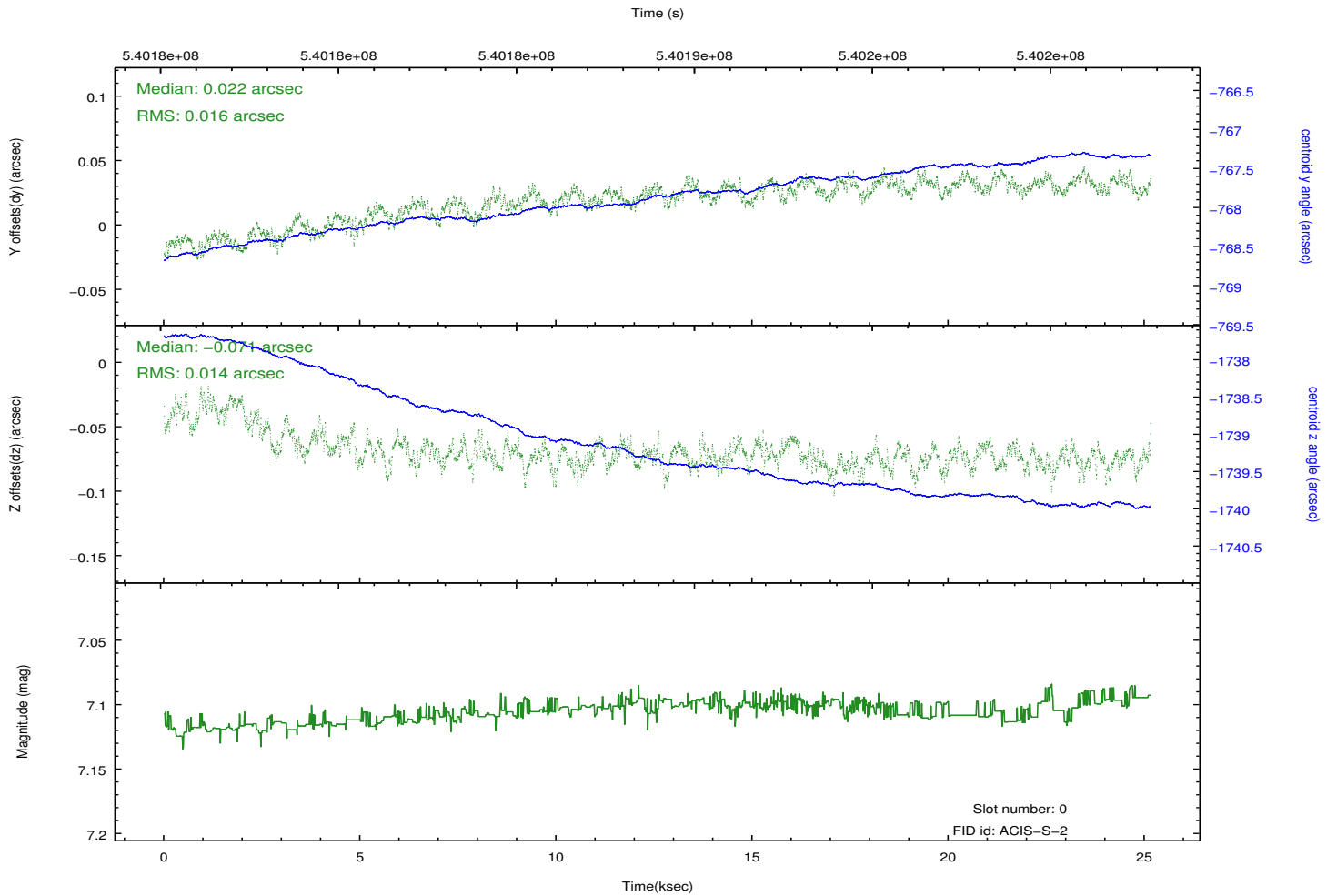
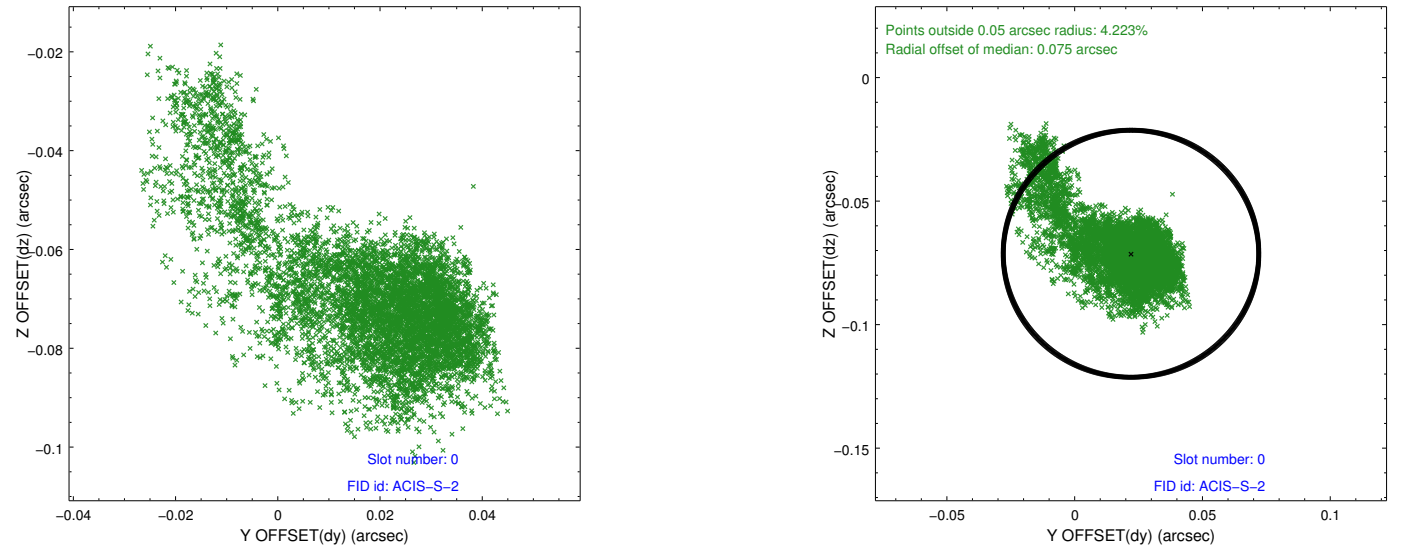


2.4.5 Slot 7

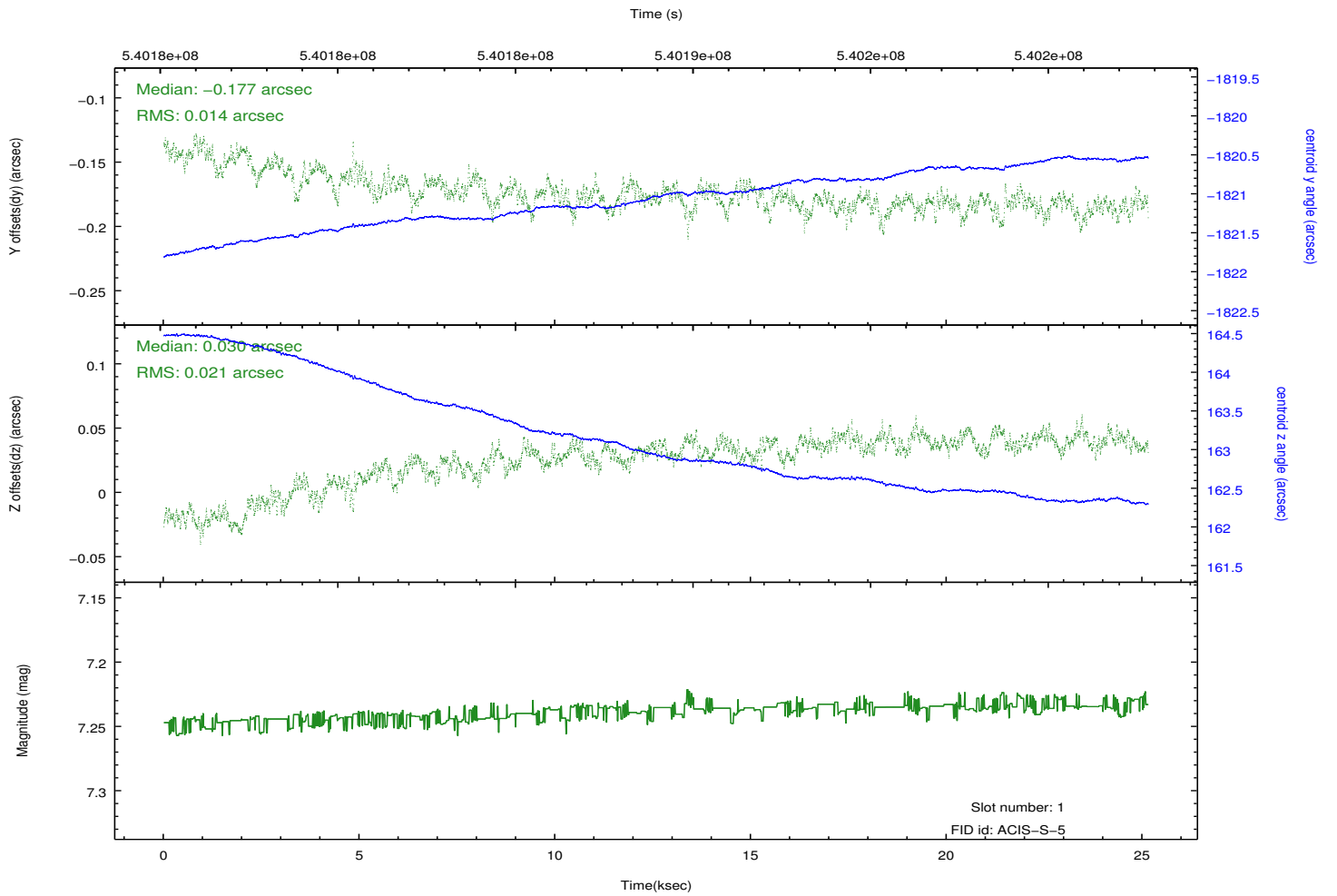
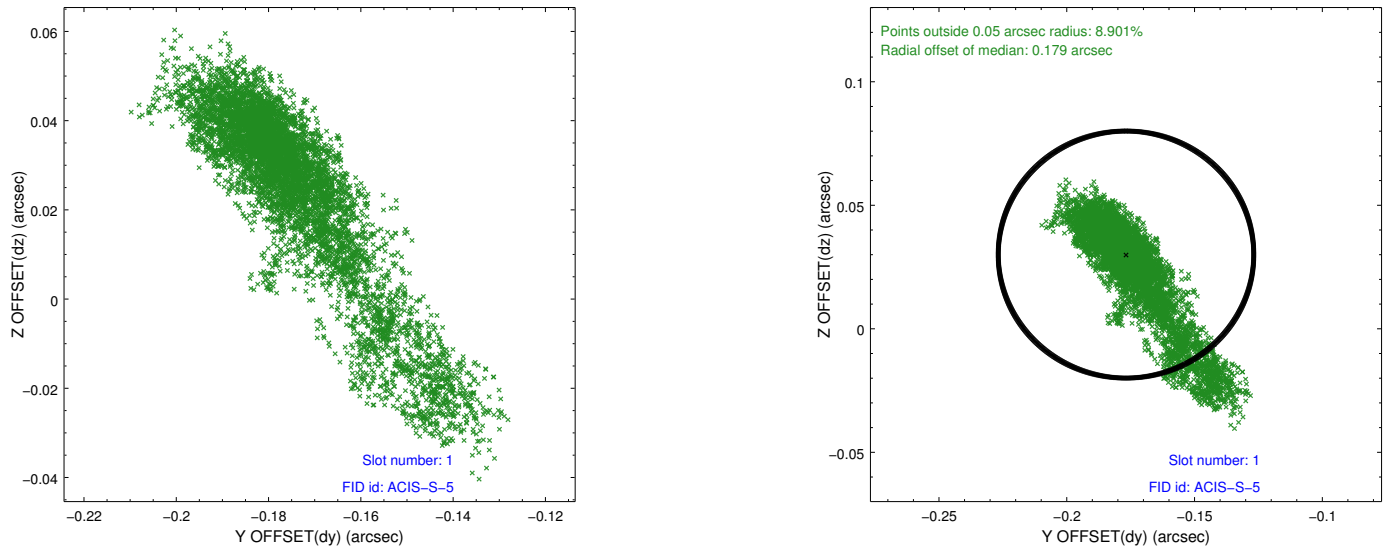


2.5 FID Slots

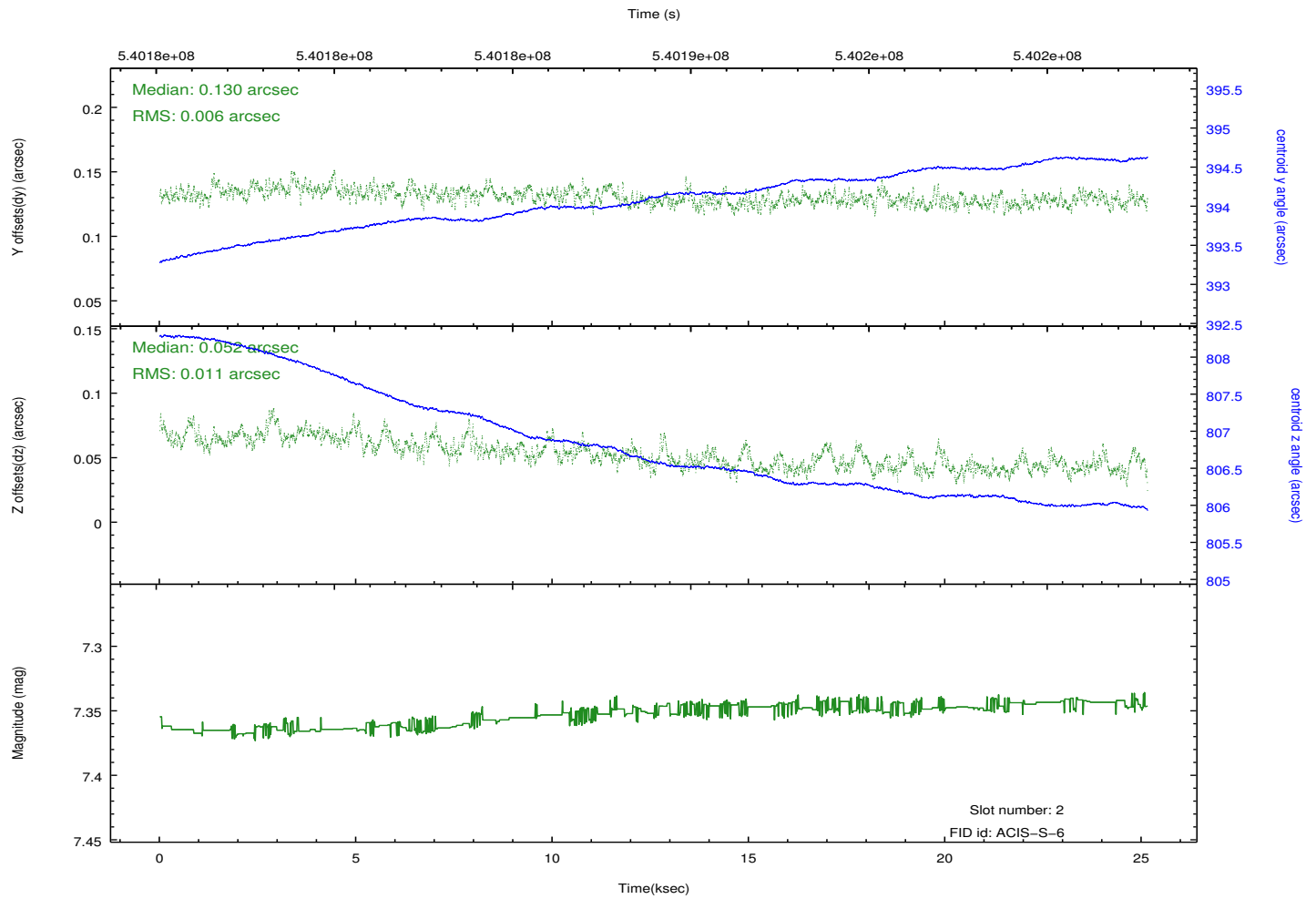
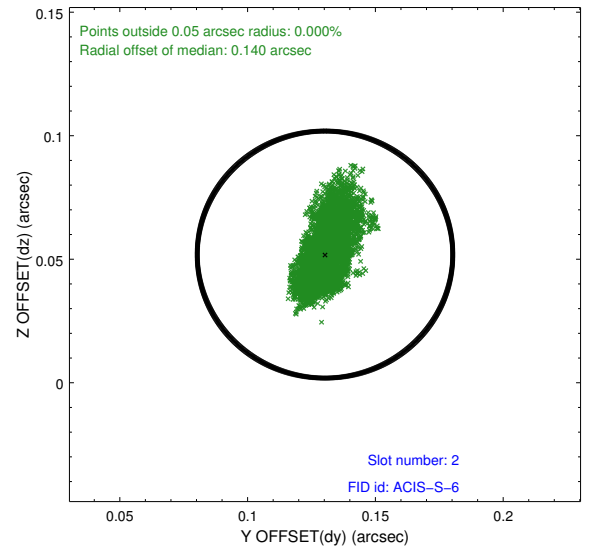
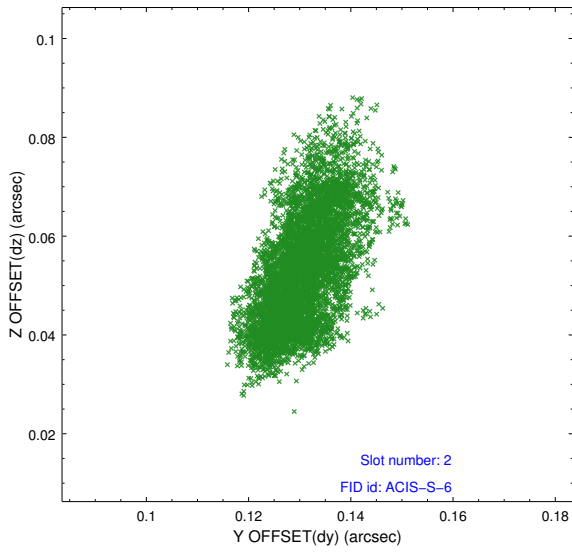
2.5.1 Slot 0



2.5.2 Slot 1



2.5.3 Slot 2



A Summary

A.1 Status

V&V Scientist	Beth Sundheim
V&V Date (YYYY-MM-DD)	2015.02.13
V&V Edition	1
V&V Disposition and Status	OK
V&V Charge Time	25.069540030479

A.2 Comments

Window preference met.