

# V&V Reference Report

## L2 ASCDS Version : 8.4.5

Observation 1723 - L2 Version 4  
Chandra X-Ray Center

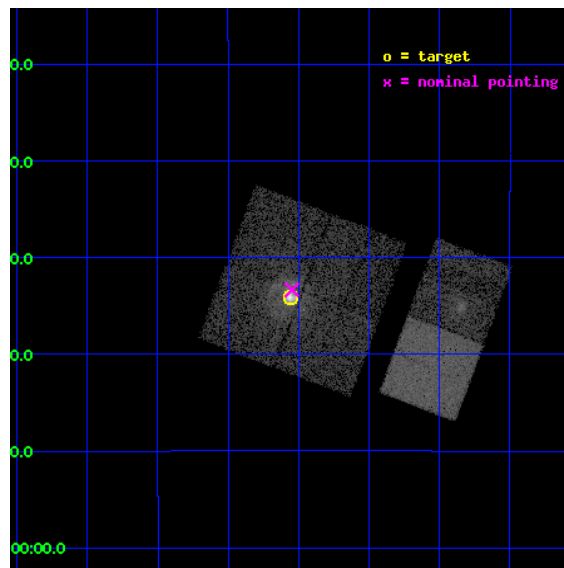
L2 Processing Date : Aug 28 2012

## Contents

<b>1</b>	<b>Front</b>	<b>2</b>
<b>2</b>	<b>OBI</b>	<b>3</b>
2.1	OBI . . . . .	3
2.1.1	Images . . . . .	3
2.1.2	Bias . . . . .	3
2.1.3	Parameters . . . . .	4
2.1.4	Events . . . . .	4
2.2	Compared Parameters . . . . .	5
2.3	Aspect . . . . .	6
2.4	Star Slots . . . . .	9
2.4.1	Slot 3 . . . . .	9
2.4.2	Slot 4 . . . . .	10
2.4.3	Slot 5 . . . . .	11
2.4.4	Slot 6 . . . . .	12
2.4.5	Slot 7 . . . . .	13
2.5	FID Slots . . . . .	14
2.5.1	Slot 0 . . . . .	14
2.5.2	Slot 1 . . . . .	15
2.5.3	Slot 2 . . . . .	16
<b>A</b>	<b>Summary</b>	<b>17</b>
A.1	Status . . . . .	17
A.2	Comments . . . . .	17

# 1 Front

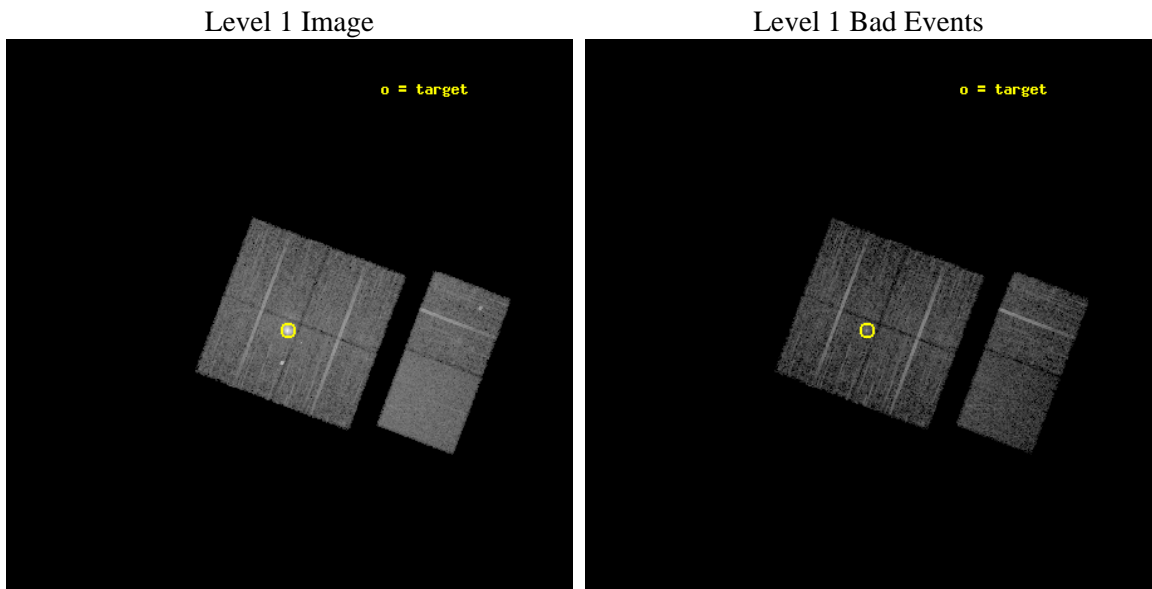
seq_num	590176	Sequence number
obs_id	1723	Observation id
title	HRC RESPONSE TO CONTINUUM SOURCE.	Proposal title
observer	Dr. CXC Calibration	Principal investigator
object	G21.5-0.9 [Chip I1, T=120, Offsets=-0,0,-1]	Source name
dtcycle	0	&#160
cycle	P	events from which exps? Prim/Second/Both
ra_targ	278.389583	Observer's specified target RA [deg]
dec_targ	-10.568528	Observer's specified target Dec [deg]
ra_nom	278.38680040145	Nominal RA [deg]
dec_nom	-10.555794531181	Nominal Dec [deg]
roll_nom	110.69299604392	Nominal Roll [deg]
revision	4	Processing version of data
ontime	7663.9906207919	Sum of GTIs [s]
livetime	7566.9445568503	Livetime [s]
ontime0	7663.9495807886	Sum of GTIs [s]
ontime1	7663.9906207919	Sum of GTIs [s]
ontime2	7664.0000071228	Sum of GTIs [s]
ontime3	7664.0000071228	Sum of GTIs [s]
ontime6	7664.0000071228	Sum of GTIs [s]
ontime7	7664.0000071228	Sum of GTIs [s]
l2events	81691	Number of level 2 events



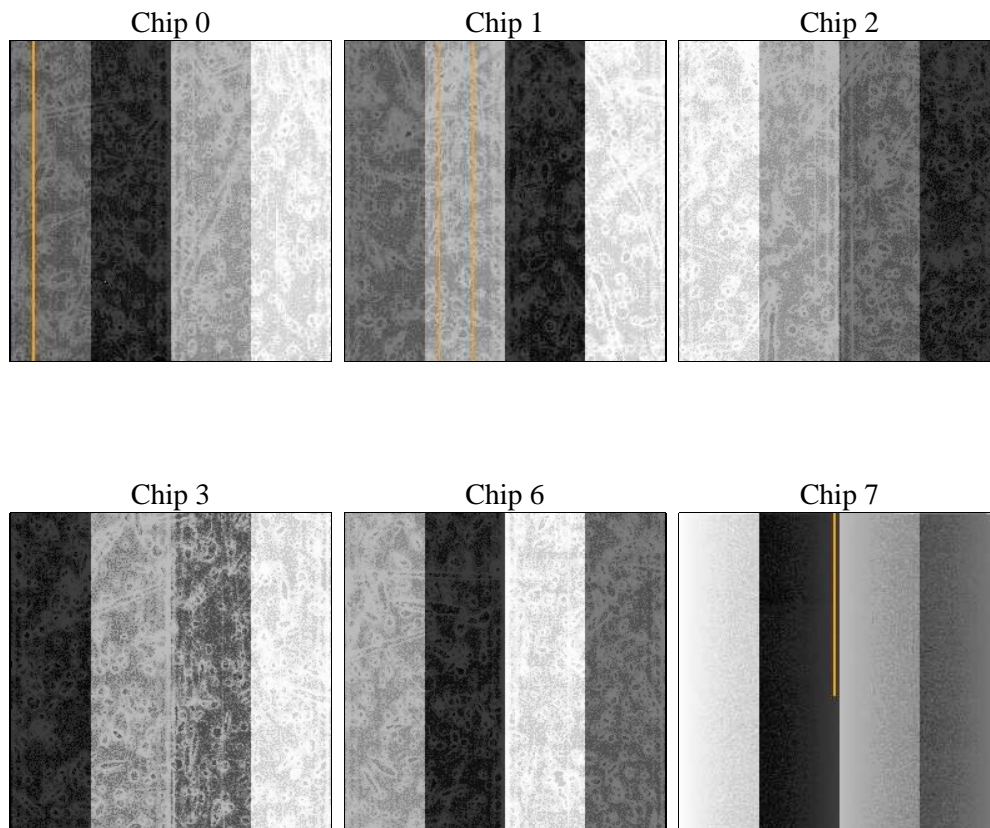
## 2 OBI

### 2.1 OBI

#### 2.1.1 Images



#### 2.1.2 Bias



### 2.1.3 Parameters

obi_num	0	Obi number	sched_exp_time	8000.000000	[s] Scheduled observation exposure time
ascdsver	8.4.5	Processing system revision	ontime	7663.9906207919	Sum of GTIs [s]
caldbver	4.5.1.1	&#160	ontime0	7663.9495807886	Sum of GTIs [s]
date	2012-08-28T04:40:44	Date and time of file creation	ontime1	7663.9906207919	Sum of GTIs [s]
revision	4	Processing version of data	ontime2	7664.0000071228	Sum of GTIs [s]
			ontime3	7664.0000071228	Sum of GTIs [s]
			ontime6	7664.0000071228	Sum of GTIs [s]
			ontime7	7664.0000071228	Sum of GTIs [s]
			l1events	329861	Number of level 1 events

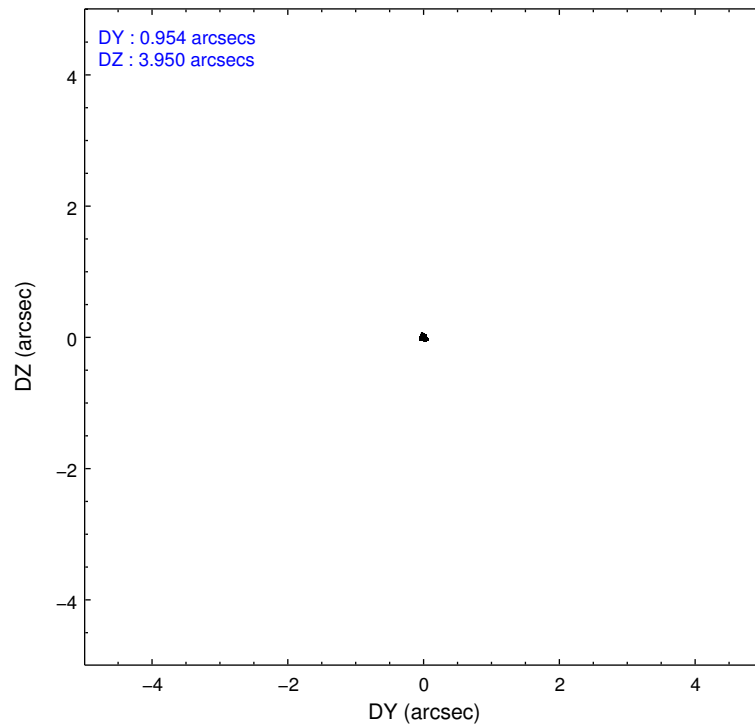
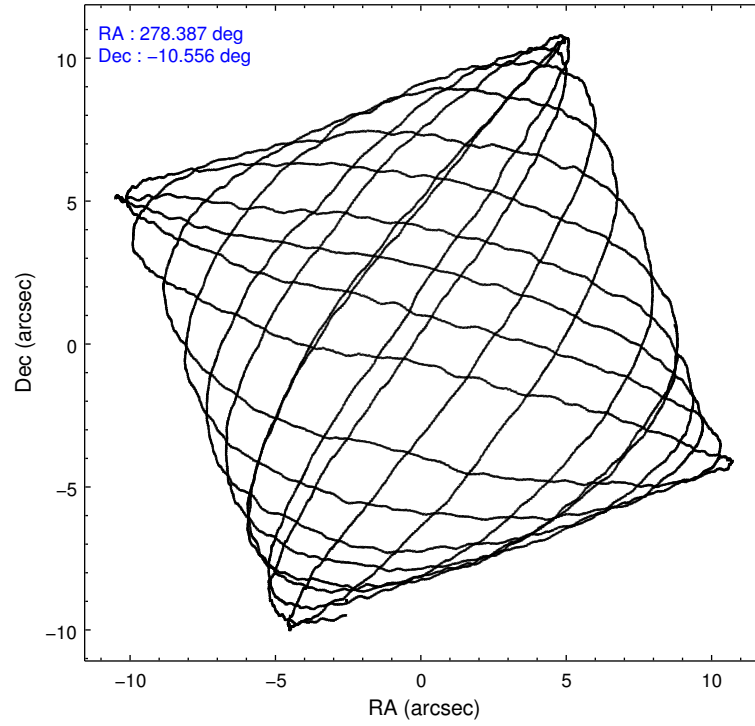
### 2.1.4 Events

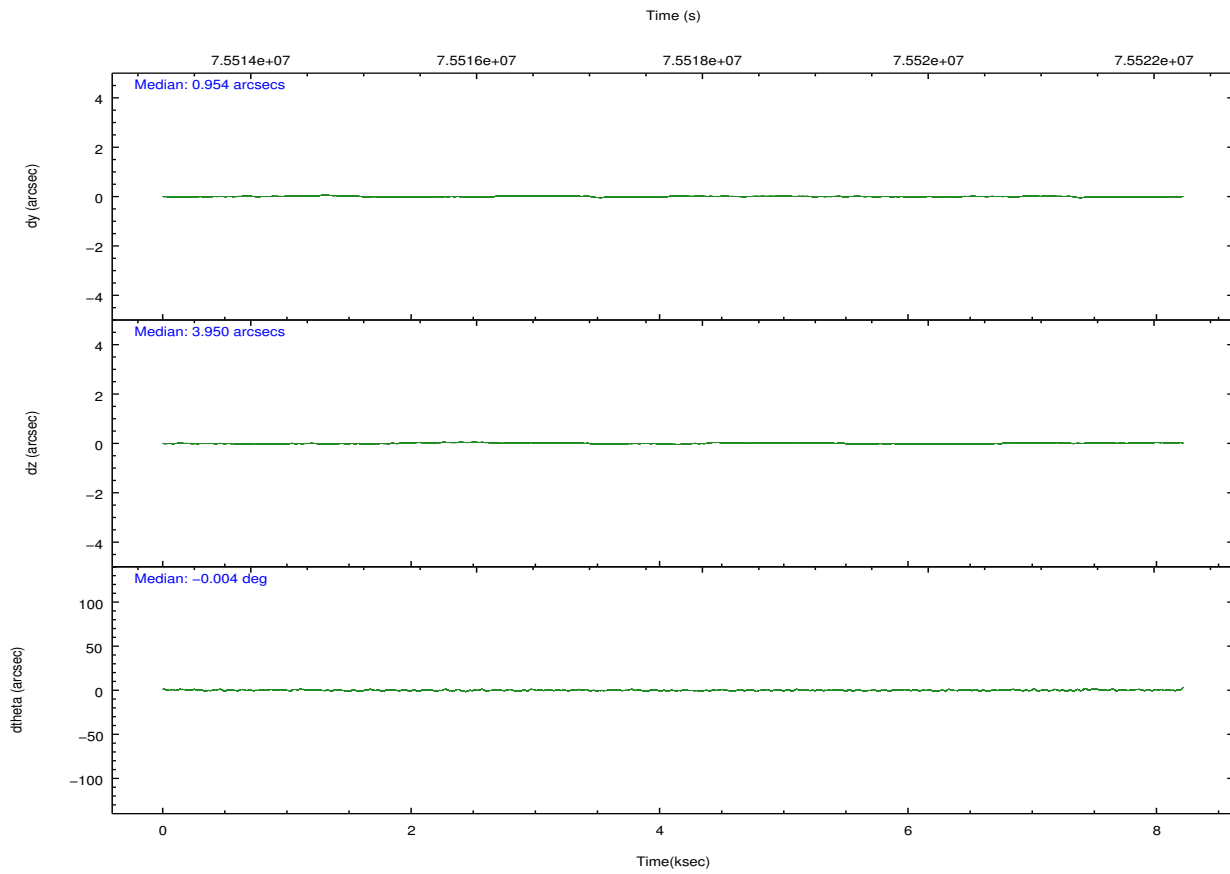
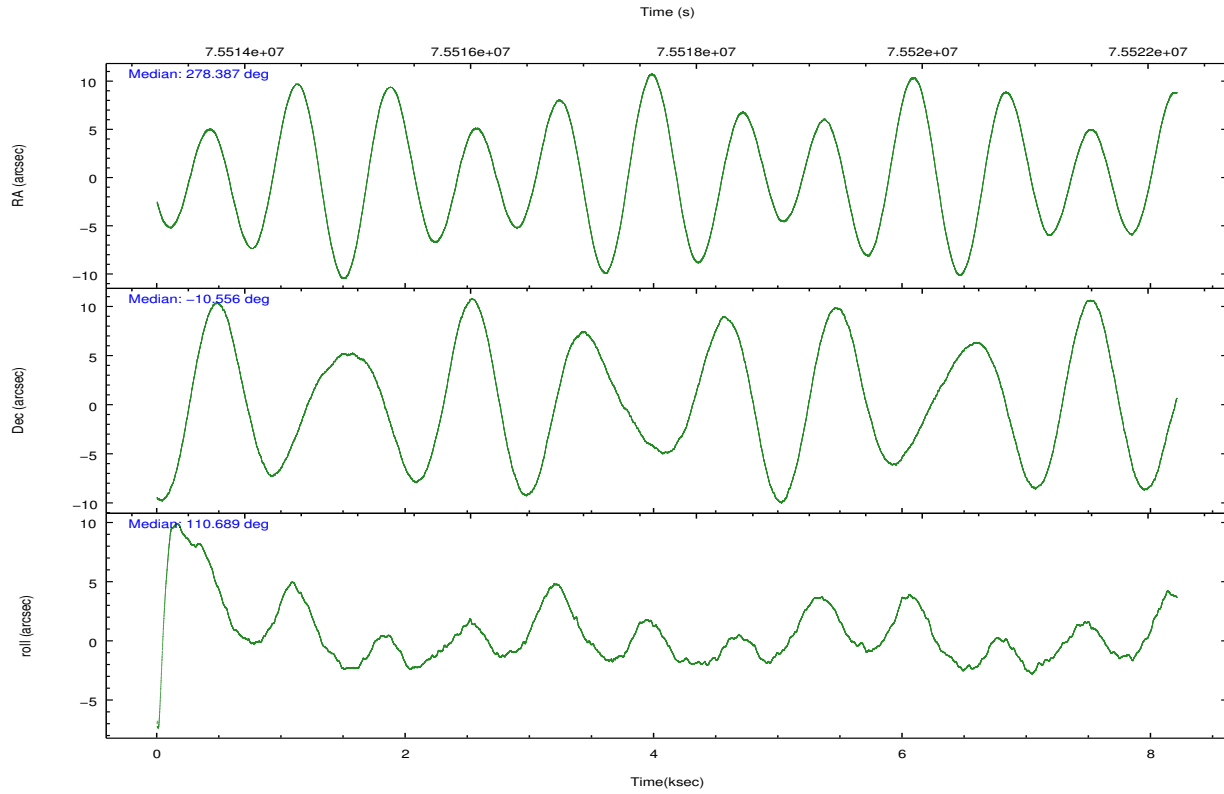
	ccd 0	ccd 1	ccd 2	ccd 3	ccd 6	ccd 7		ccd 0	ccd 1	ccd 2	ccd 3	ccd 6	ccd 7
level 1 events	46381	71359	50839	50265	51371	59646	grade 0 events	4240	21188	3393	4073	4649	2746
rejected events	38286	39955	43836	42281	42548	32312		9%	29%	6%	8%	9%	4%
rejected %	82%	55%	86%	84%	82%	54%	grade 1 events	31	209	26	22	39	50
								0%	0%	0%	0%	0%	0%
							grade 2 events	1613	4625	1494	1672	1689	5325
								3%	6%	2%	3%	3%	8%
							grade 3 events	605	1560	508	520	617	2430
								1%	2%	0%	1%	1%	4%
							grade 4 events	568	1507	542	571	585	2465
								1%	2%	1%	1%	1%	4%
							grade 5 events	1545	1728	1493	1609	1807	5269
								3%	2%	2%	3%	3%	8%
							grade 6 events	1074	2539	1068	1152	1285	14381
								2%	3%	2%	2%	2%	24%
							grade 7 events	36705	38003	42315	40646	40700	26980
								79%	53%	83%	80%	79%	45%

## 2.2 Compared Parameters

Parameter	Planned	Actual	Parameter	Planned	Actual
Instrument	ACIS	ACIS	Obspar format version number	7	7
Detector	ACIS-012367	ACIS-012367	Obspar file type	PREDICTED	ACTUAL
Grating	NONE	NONE	Obspar update status	NONE	UPDATED
Data mode	FAINT	FAINT	Number of optional ACIS chips dropped	0	0
Observation mode	POINTING	POINTING	On-chip summing requested	N	N
[deg] Pointing RA	278.408429	278.3868004014498	Subarray requested	NONE	NONE
[deg] Pointing Dec	-10.573344	-10.55579453118106	Alternating exposures requested	N	N
[deg] Pointing Roll	110.488275	110.6929960439162	[s] Primary exposure time	0.000000	3.2
[mm] SIM focus pos	-0.782348	-0.7809083437167272			
[mm] SIM defocus	0	0.001439871863259334			
[mm] SIM translation stage pos	-238.277263	-238.2741181829365			
[mm] SIM translation stage offset	4.6848	4.681665180006831			
[s] Observation start time (MET)	75513845.184000	75513449.443827			
Observation start date	2000-05-24T00:03:01	2000-05-23T23:57:29			
[s] Observation end time (MET)	75521845.184000	75521986.66914099			
Observation end date	2000-05-24T02:16:21	2000-05-24T02:19:46			
Read mode	TIMED	TIMED			

## 2.3 Aspect



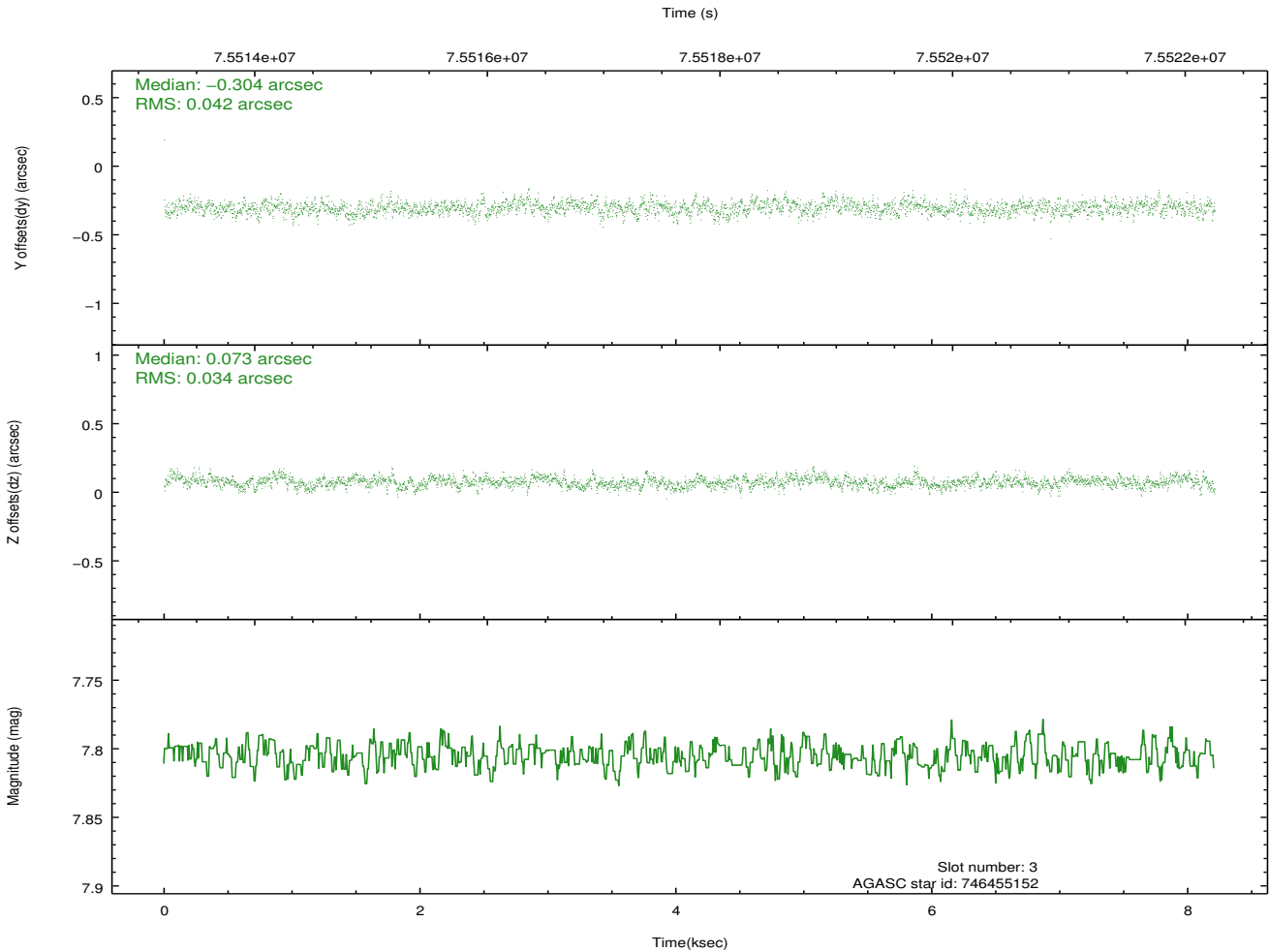
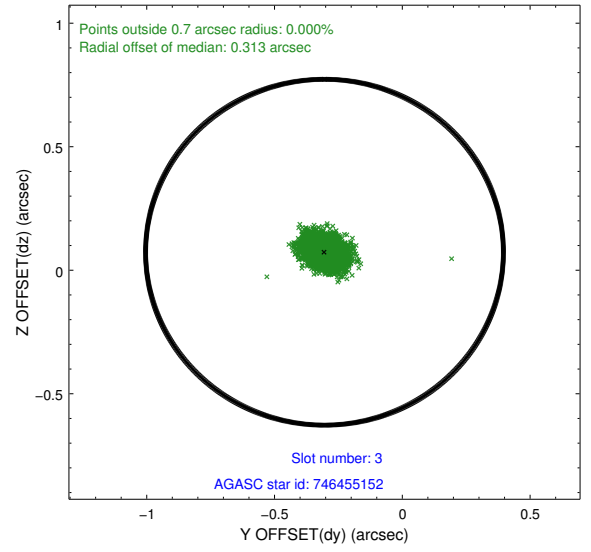
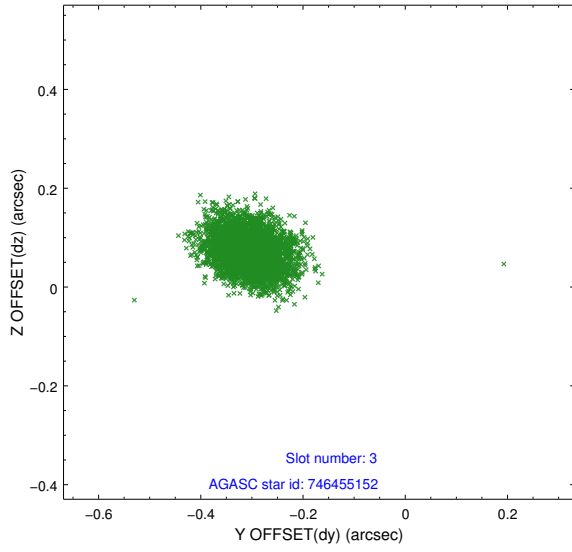


### Slot Statistics

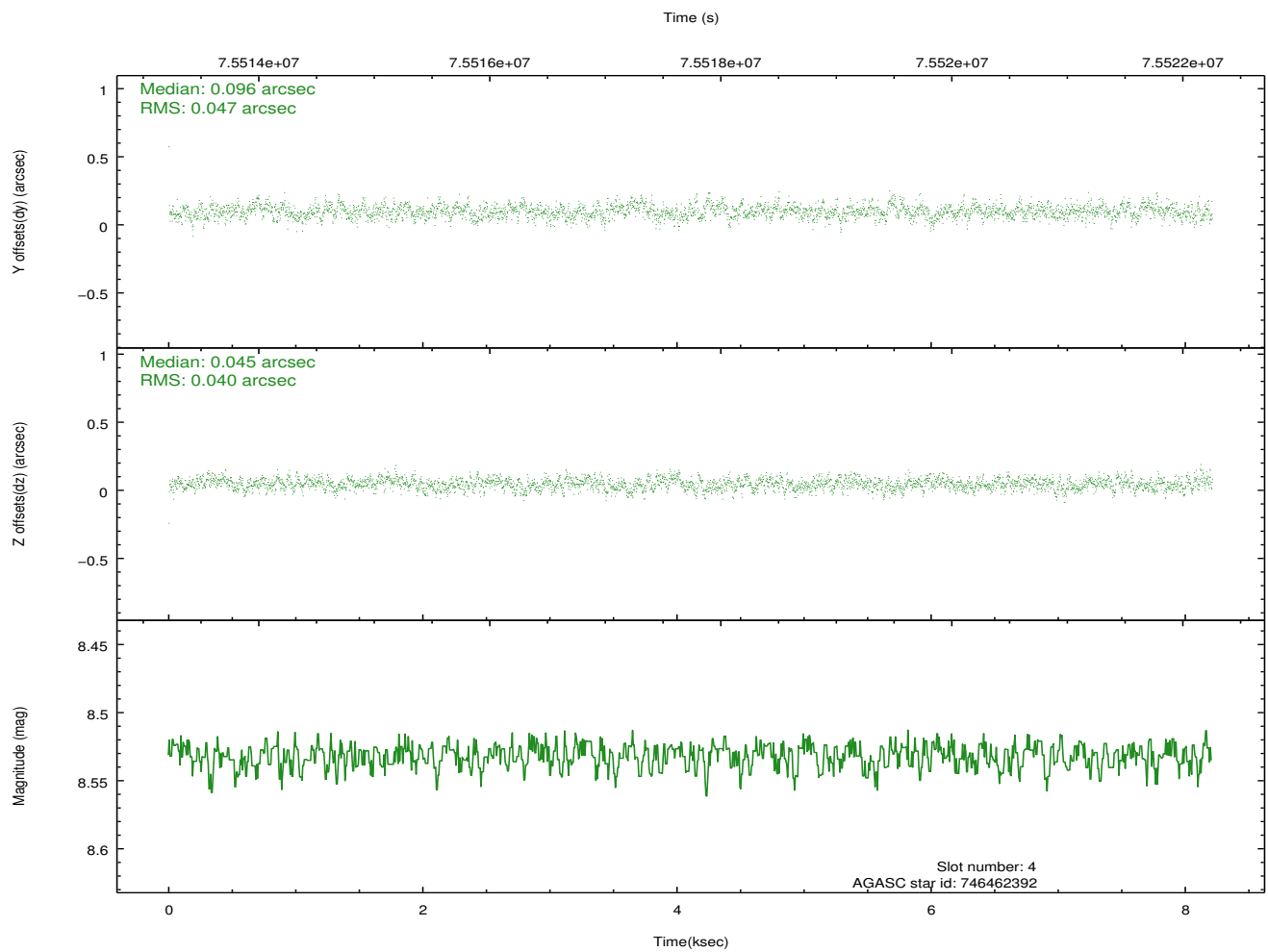
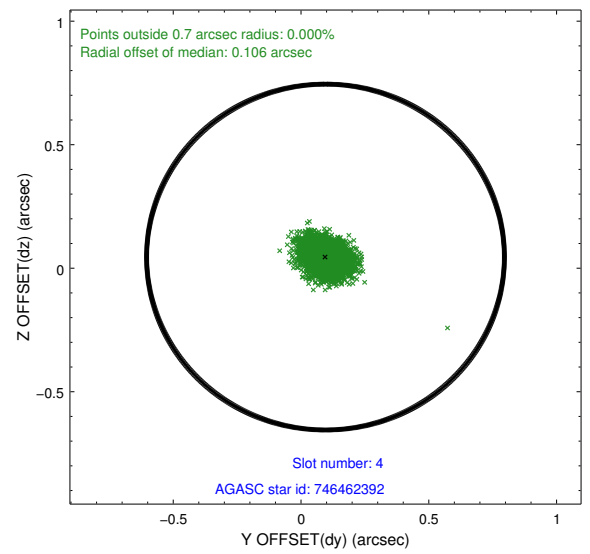
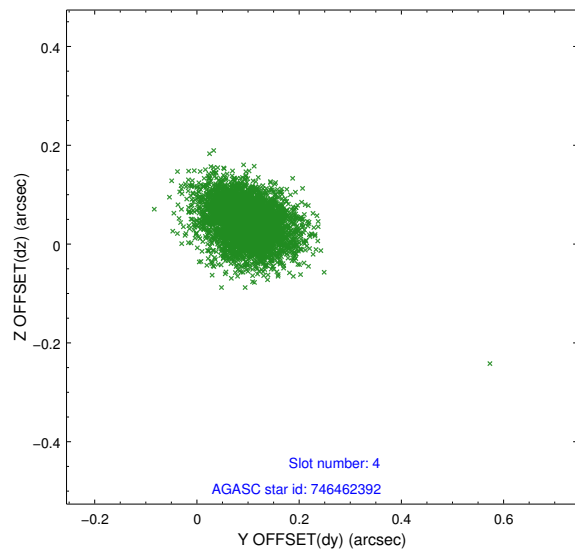
slot	status	id	mag	n_pts	med_dy	med_dz	dr1	dr2	ra	dec	mean_y	mean_z
0	FID	ACIS-I-2	7.16	2003	-0.062	-0.085	0.008	0.015	0.000000	0.000000	-754.97	-738.09
1	FID	ACIS-I-4	7.19	2003	-0.057	0.064	0.006	0.011	0.000000	0.000000	2158.73	1168.08
2	FID	ACIS-I-5	7.24	2003	0.018	0.090	0.008	0.014	0.000000	0.000000	-1808.16	1167.17
3	GUIDE	746455152	7.81	4005	-0.304	0.073	0.057	0.094	278.447893	-9.976732	1962.94	-883.15
4	GUIDE	746462392	8.53	4005	0.096	0.045	0.065	0.108	279.038421	-10.890715	-1851.14	-1686.40
5	GUIDE	746455112	8.93	4005	0.103	0.055	0.076	0.129	278.266531	-10.703234	-262.63	633.01
6	GUIDE	746460328	9.82	4004	-0.084	0.068	0.116	0.183	278.603974	-9.898096	2034.36	-1500.57
7	GUIDE	746995400	9.70	4005	0.181	-0.239	0.117	0.191	278.078957	-11.289885	-2009.12	1991.53

## 2.4 Star Slots

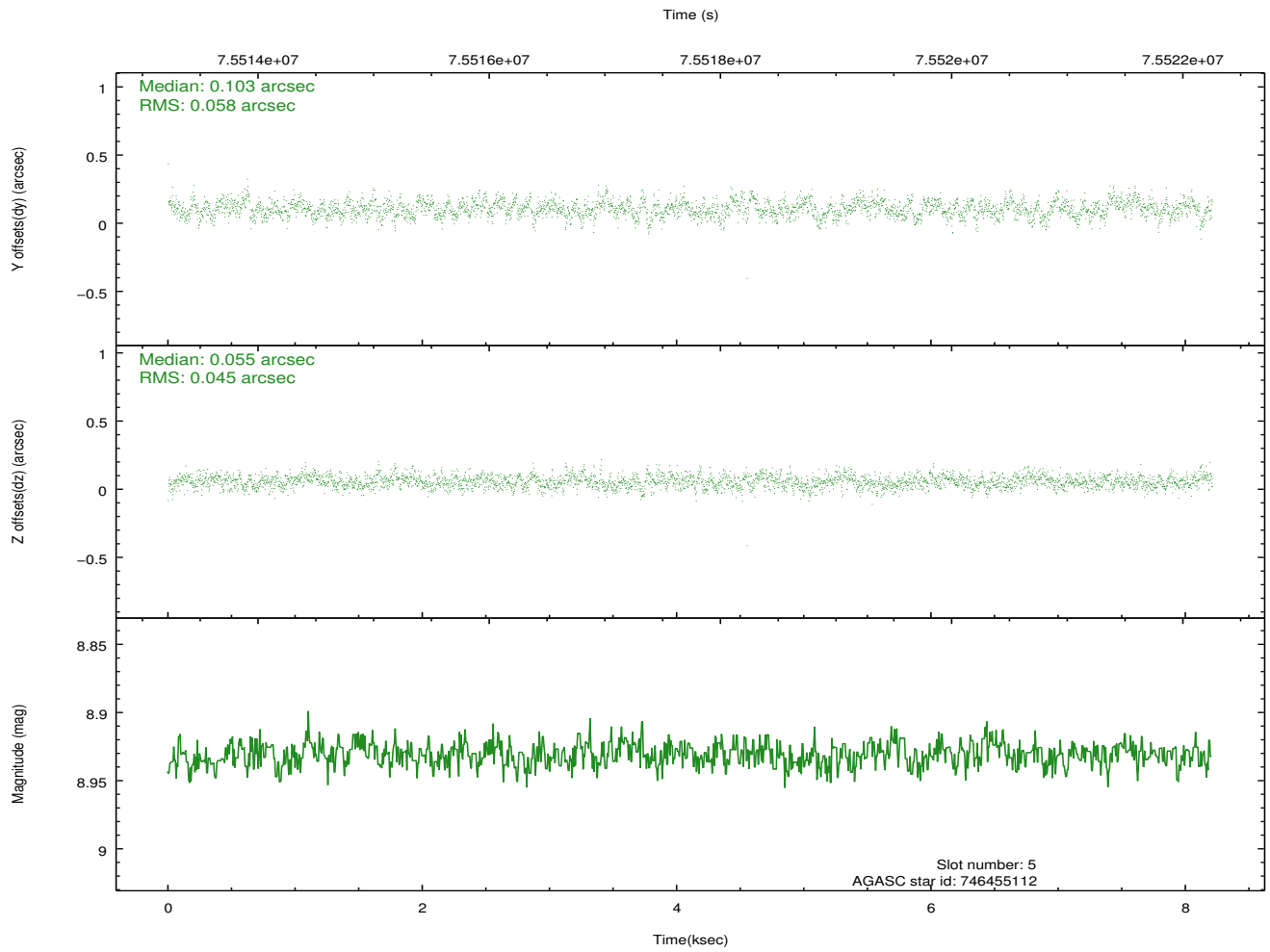
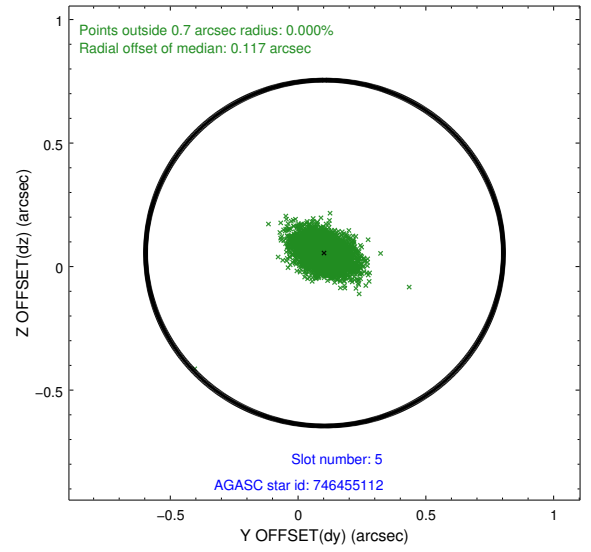
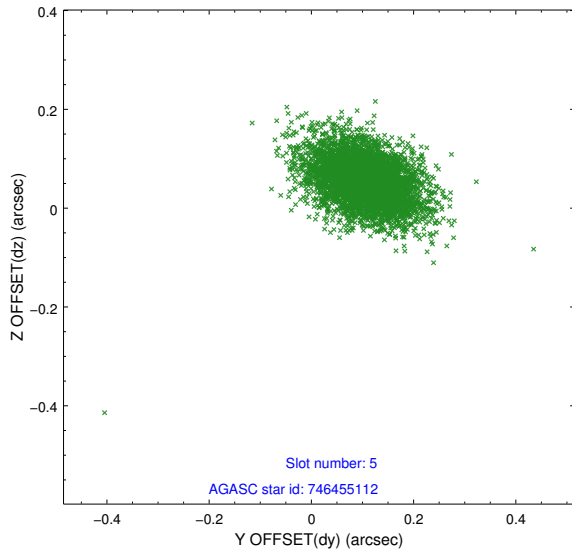
### 2.4.1 Slot 3



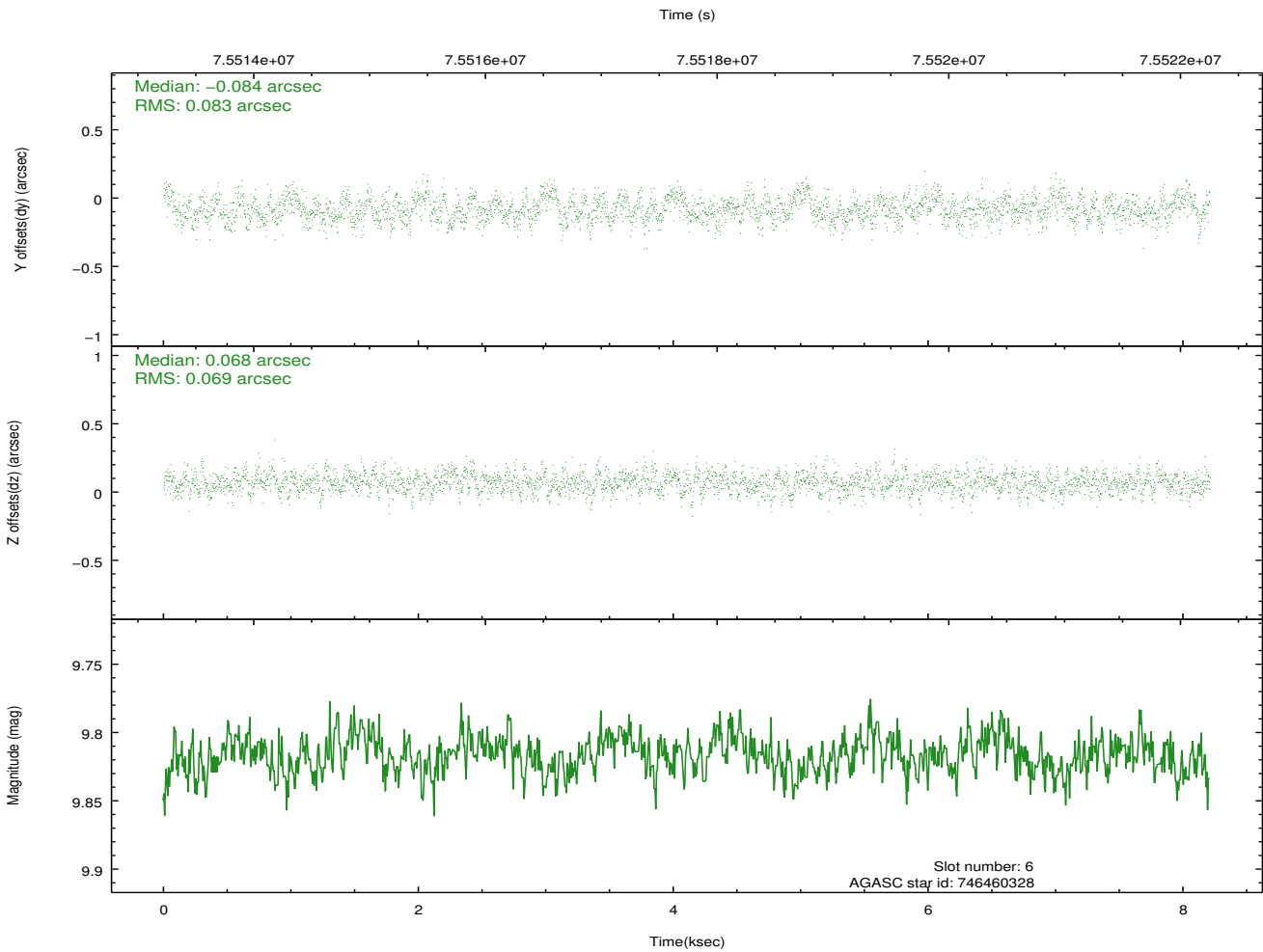
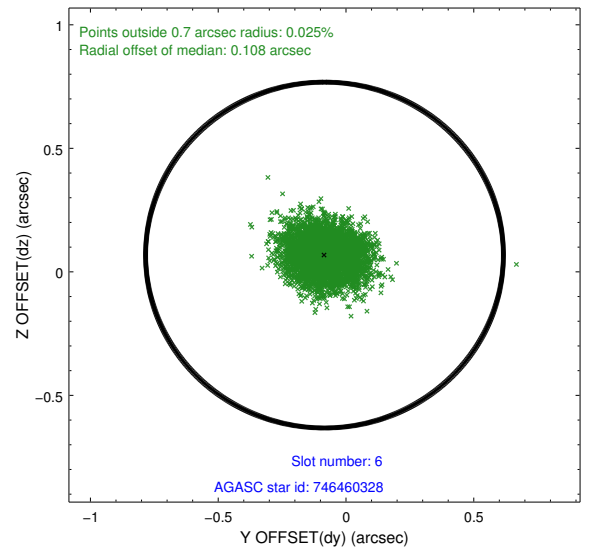
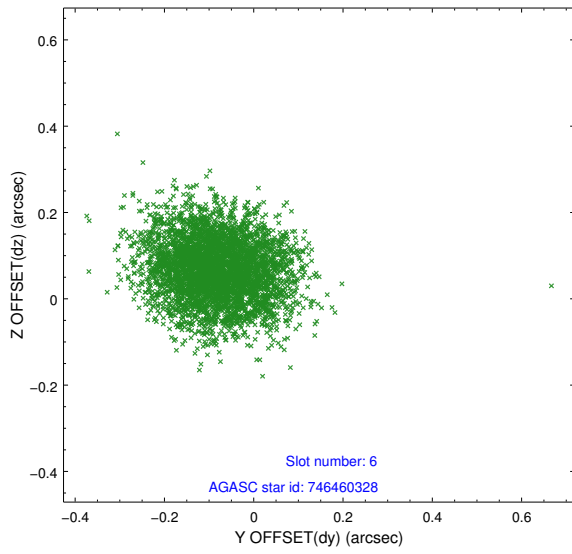
## 2.4.2 Slot 4



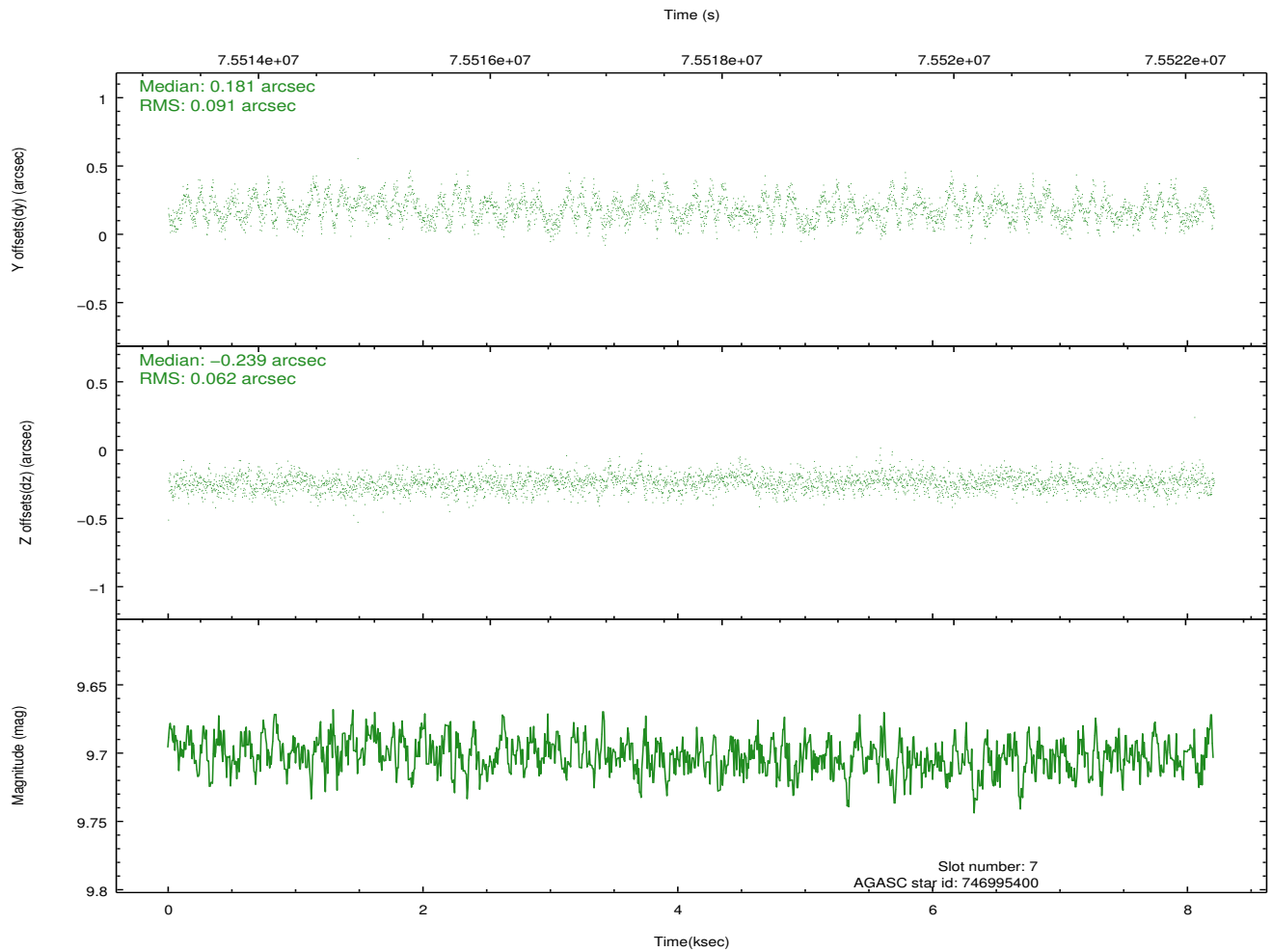
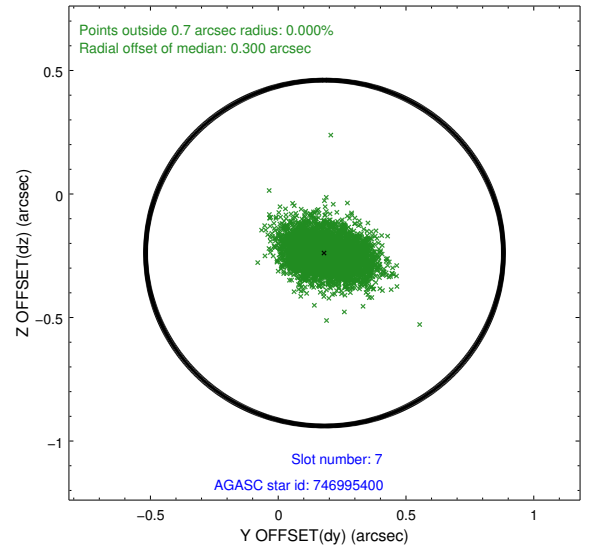
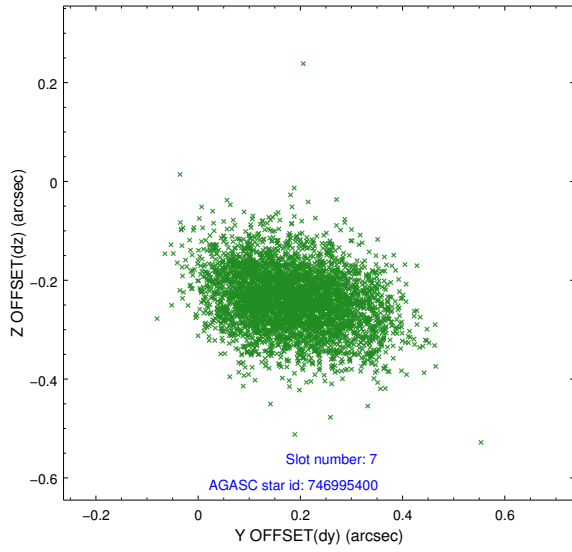
### 2.4.3 Slot 5



## 2.4.4 Slot 6

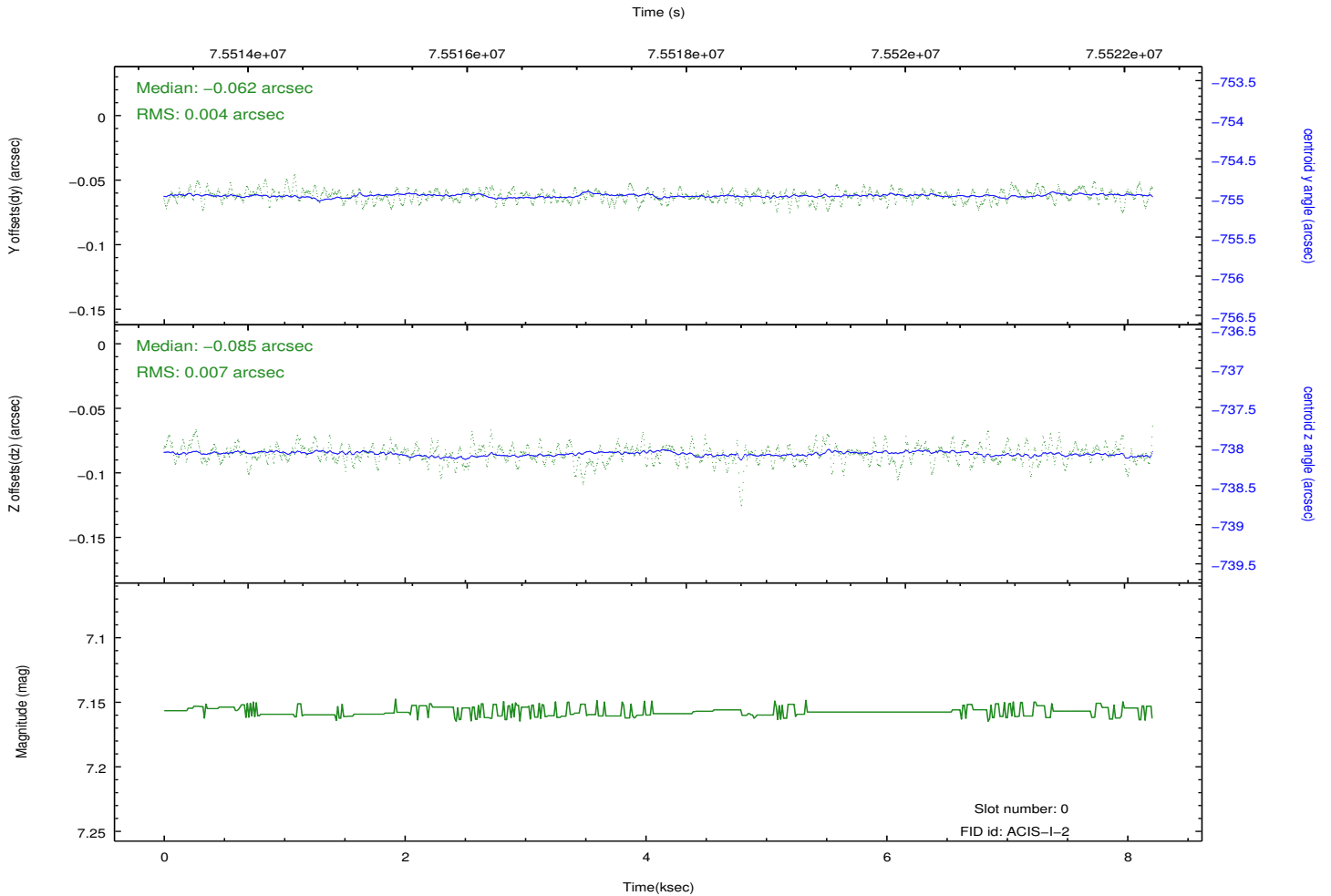
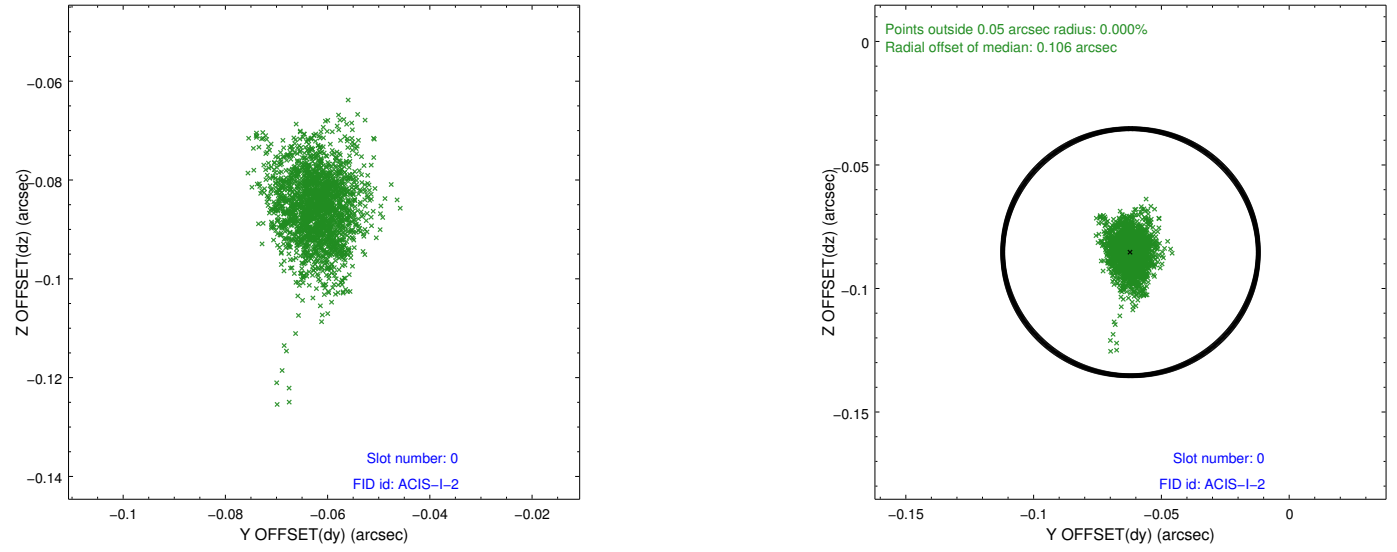


### 2.4.5 Slot 7

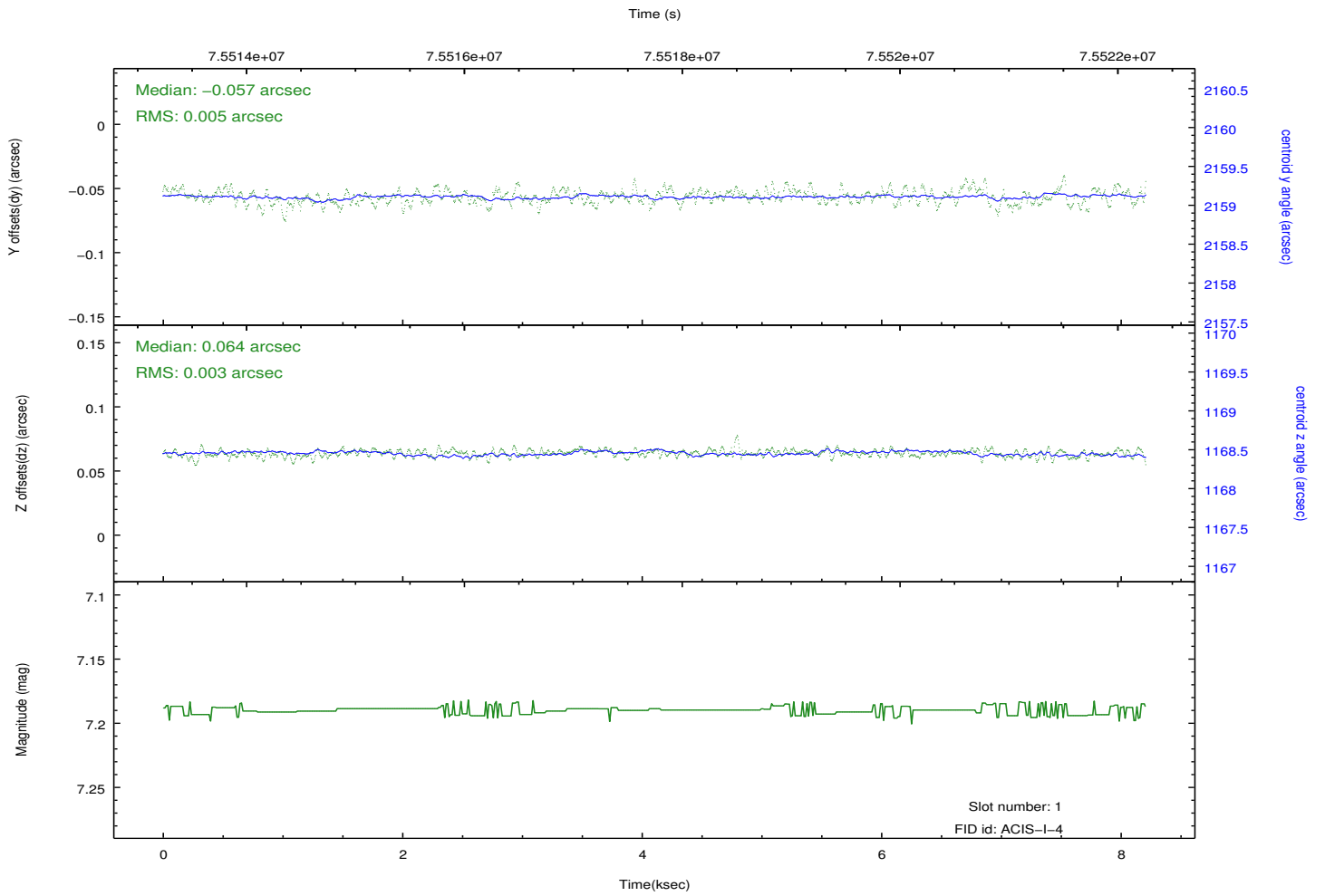
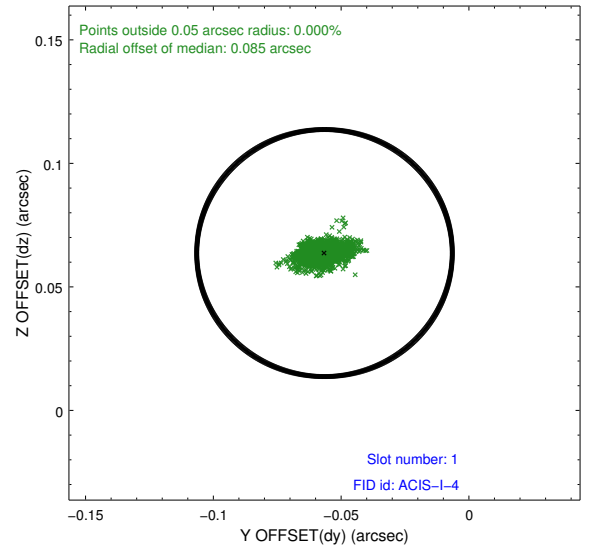
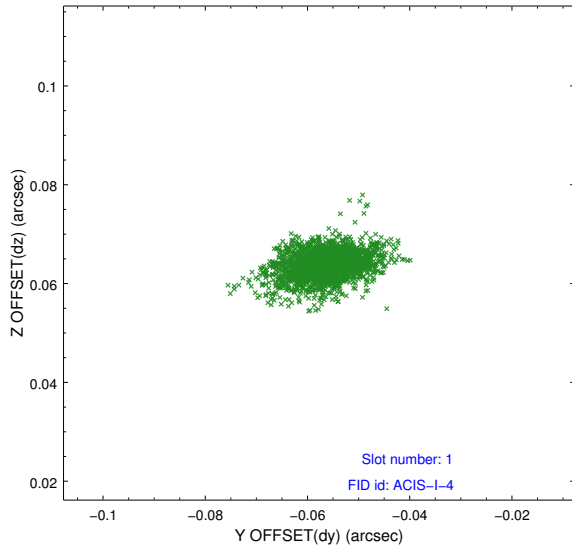


## 2.5 FID Slots

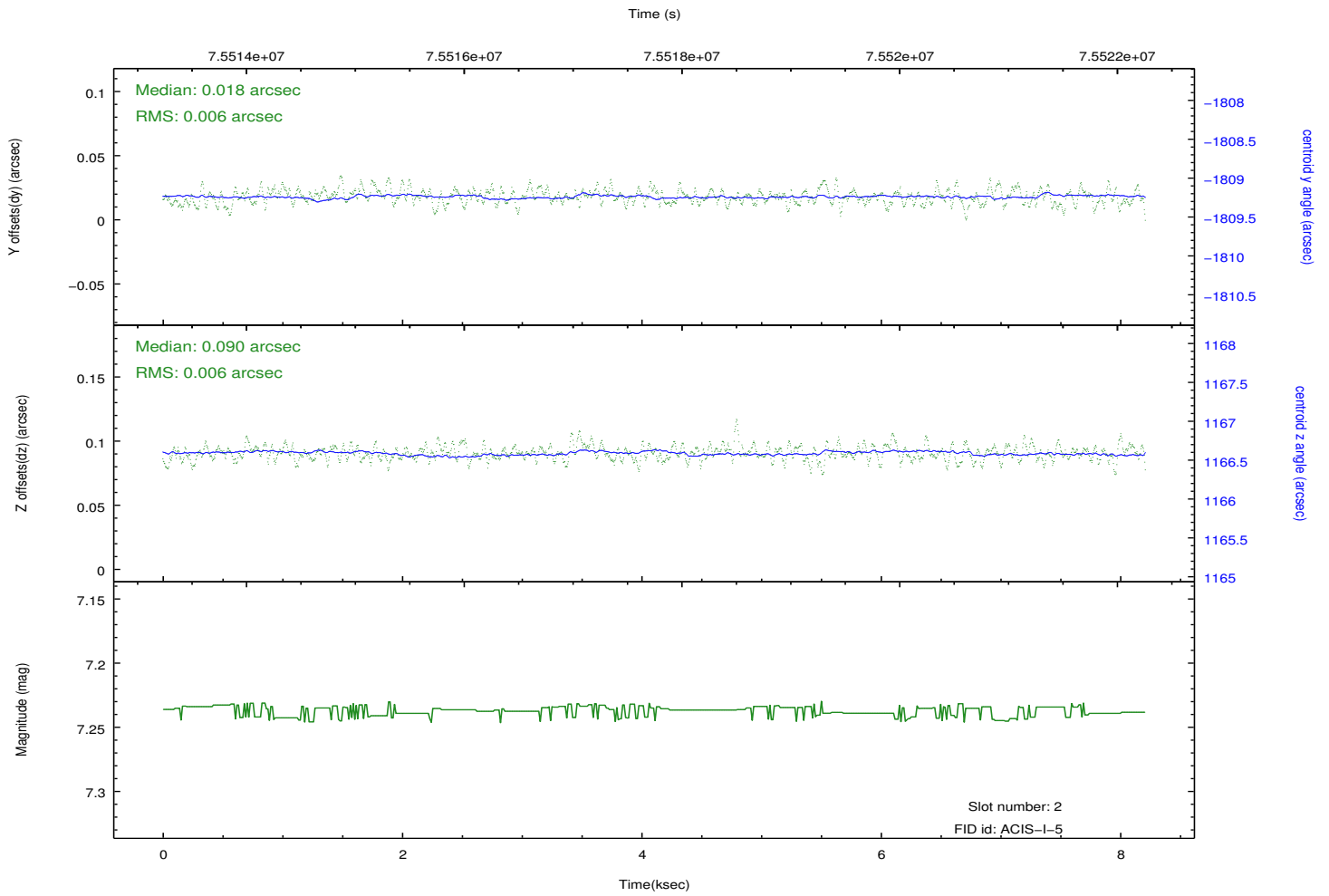
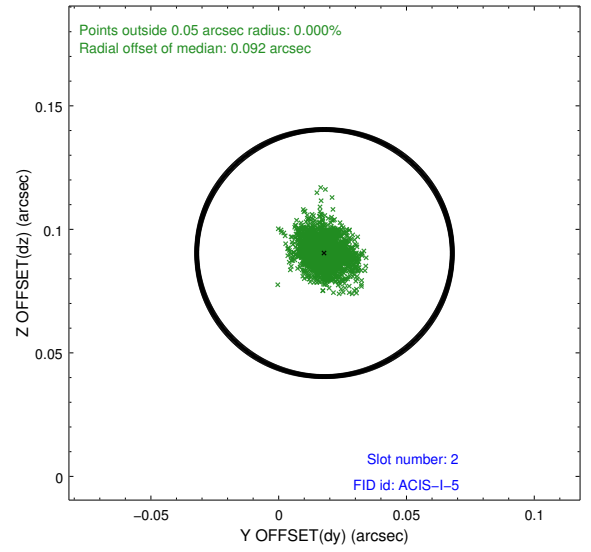
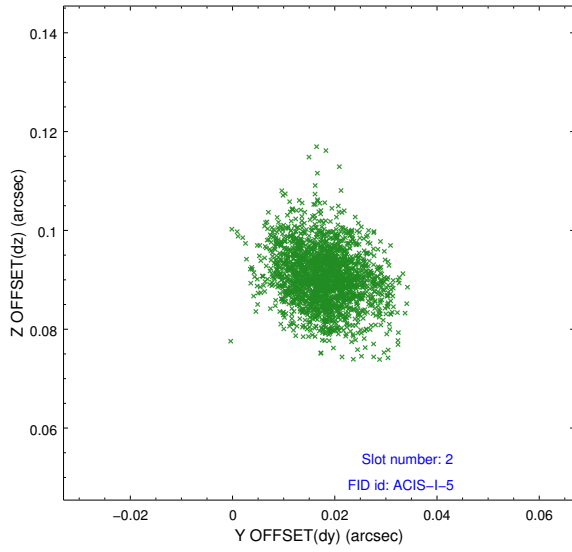
### 2.5.1 Slot 0



## 2.5.2 Slot 1



### 2.5.3 Slot 2



# A Summary

## A.1 Status

V&V Scientist	Beth Sundheim
V&V Date (YYYY-MM-DD)	2012.08.30
V&V Edition	1
V&V Disposition and Status	OK
V&V Charge Time	7.67

## A.2 Comments