

V&V Reference Report

L2 ASCDS Version : 7.6.10

Observation 1793 - L2 Version 7
Chandra X-Ray Center

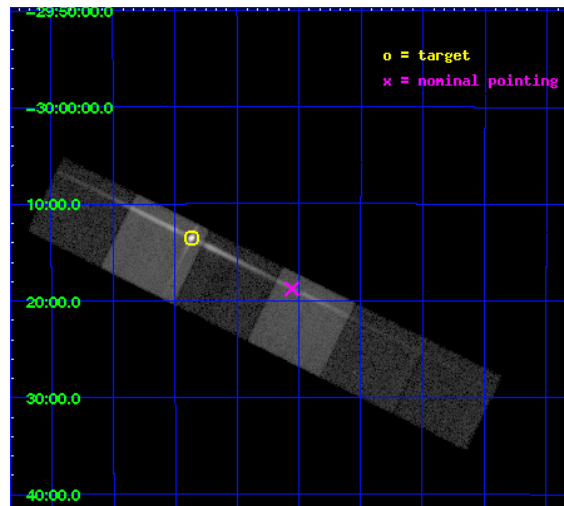
L2 Processing Date : Jan 6 2010

Contents

1	Front	2
2	OBI	3
2.1	OBI	3
2.1.1	Images	3
2.1.2	Bias	3
2.1.3	Parameters	4
2.1.4	Events	4
2.2	Compared Parameters	5
2.3	Aspect	6
2.4	Star Slots	9
2.4.1	Slot 3	9
2.4.2	Slot 4	10
2.4.3	Slot 5	11
2.4.4	Slot 6	12
2.4.5	Slot 7	13
2.5	FID Slots	14
2.5.1	Slot 0	14
2.5.2	Slot 1	15
2.5.3	Slot 2	16
3	Gratings	17
3.1	LETG Arm	17
A	Summary	19
A.1	Status	19
A.2	Comments	19

1 Front

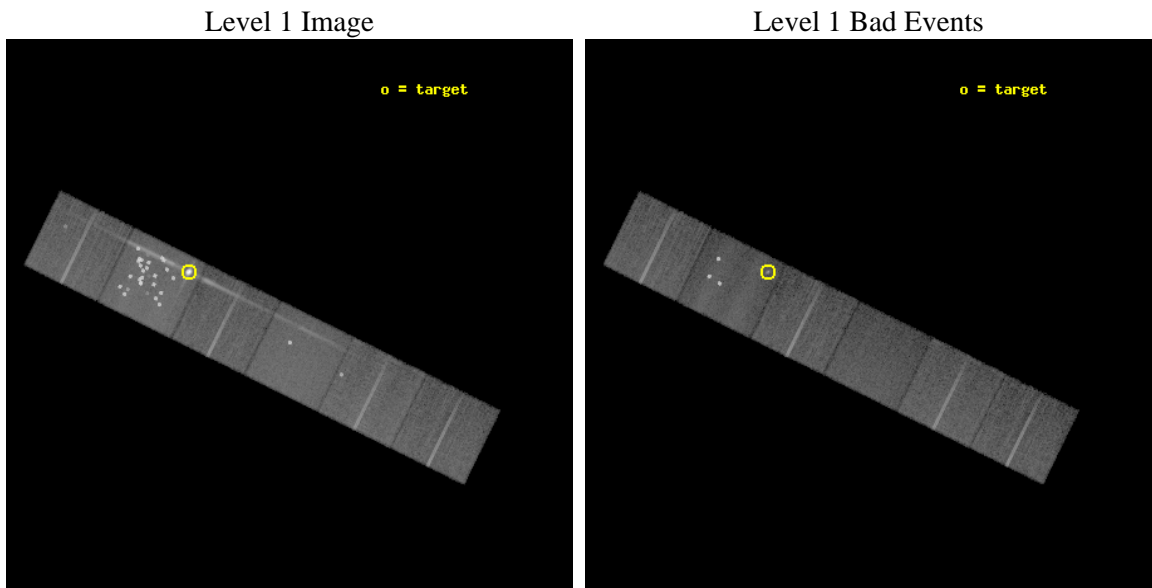
seq_num	390011	Sequence number
obs_id	1793	Observation id
title	GRATINGS CALIBRATION OBSERVATIONS OF PKS2155-304	Proposal title
observer	Dr. CXC Calibration	Principal investigator
object	PKS2155-304	Source name
dtcycle	0	
cycle	P	events from which exps? Prim/Second/Both
ra_targ	329.716667	Observer's specified target RA
dec_targ	-30.225556	Observer's specified target Dec
ra_nom	329.514151618	Nominal RA
dec_nom	-30.313392343199	Nominal Dec
roll_nom	26.244106104089	Nominal Roll
revision	7	Processing version of data
ontime	21161.600019708	Sum of GTIs [s]
livetime	20893.639098273	Livetime [s]
ontime4	21161.600019708	Sum of GTIs [s]
ontime5	21161.600019708	Sum of GTIs [s]
ontime6	21161.600019708	Sum of GTIs [s]
ontime7	21161.600019708	Sum of GTIs [s]
ontime8	21161.600019708	Sum of GTIs [s]
ontime9	21161.600019708	Sum of GTIs [s]
l2events	277946	Number of level 2 events



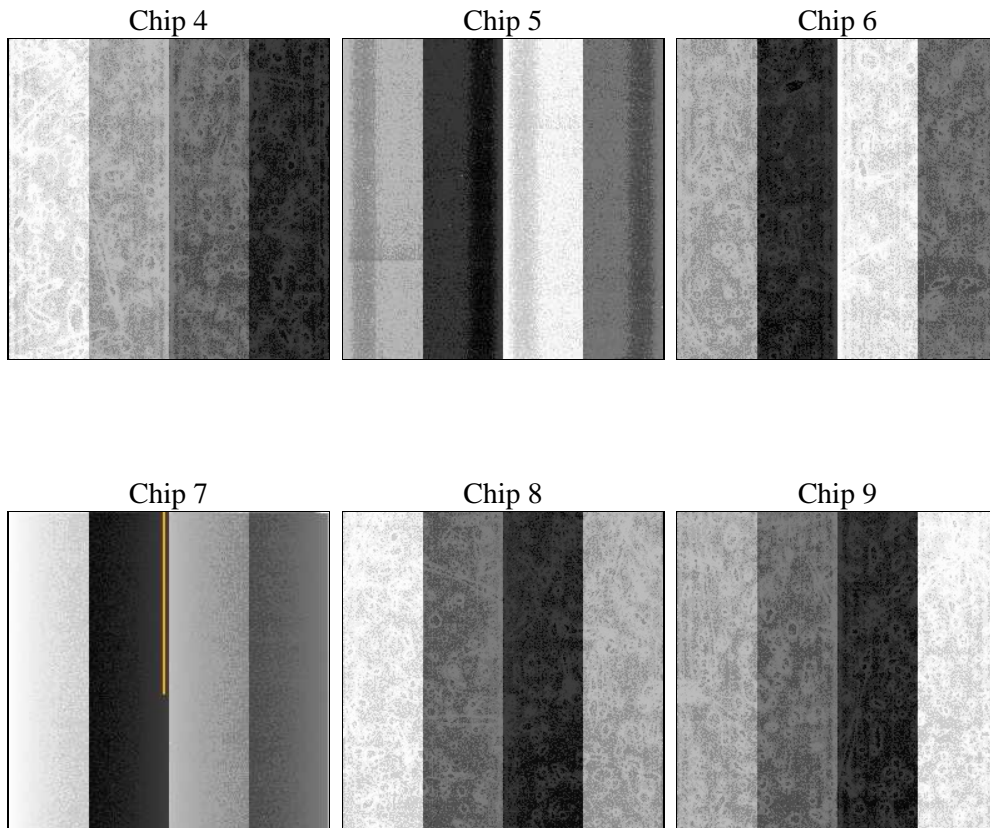
2 OBI

2.1 OBI

2.1.1 Images



2.1.2 Bias



2.1.3 Parameters

obi_num	0	Obi number	sched_exp_time	21400.000000	Scheduled observation exposure time
ascdsver	7.6.11.9	ASCDS version number	ontime	21161.600019708	Sum of GTIs [s]
caldbver	3.5.0.1	 	ontime4	21161.600019708	Sum of GTIs [s]
date	2008-11-24T16:56:35	Date and time of file creation	ontime5	21161.600019708	Sum of GTIs [s]
revision	4	Processing version of data	ontime6	21161.600019708	Sum of GTIs [s]
			ontime7	21161.600019708	Sum of GTIs [s]
			ontime8	21161.600019708	Sum of GTIs [s]
			ontime9	21161.600019708	Sum of GTIs [s]
			l1events	1115400	Number of level 1 events

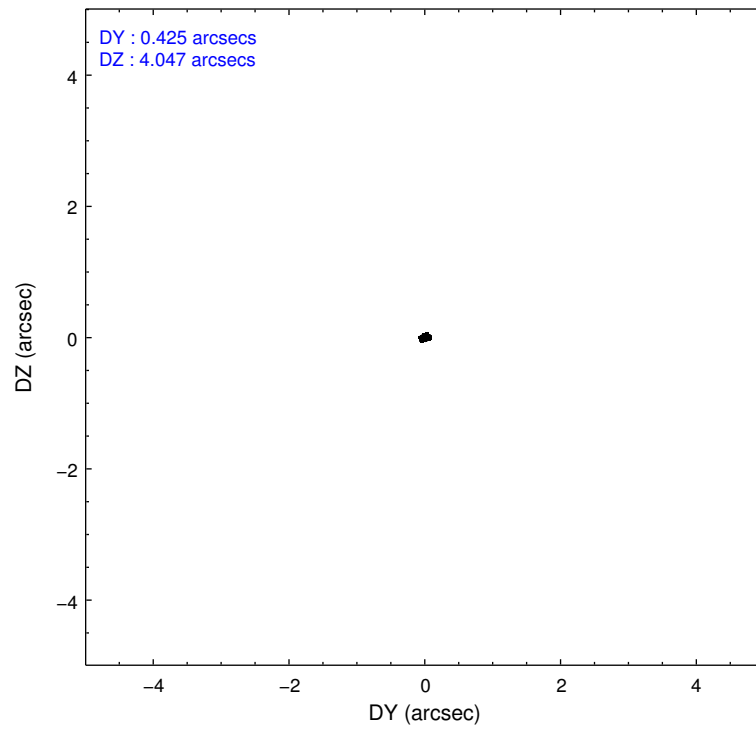
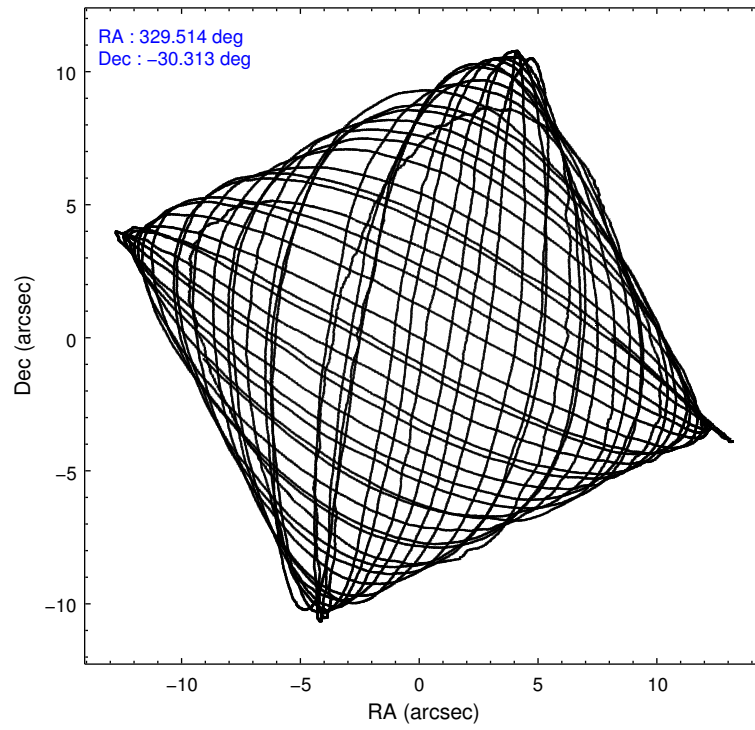
2.1.4 Events

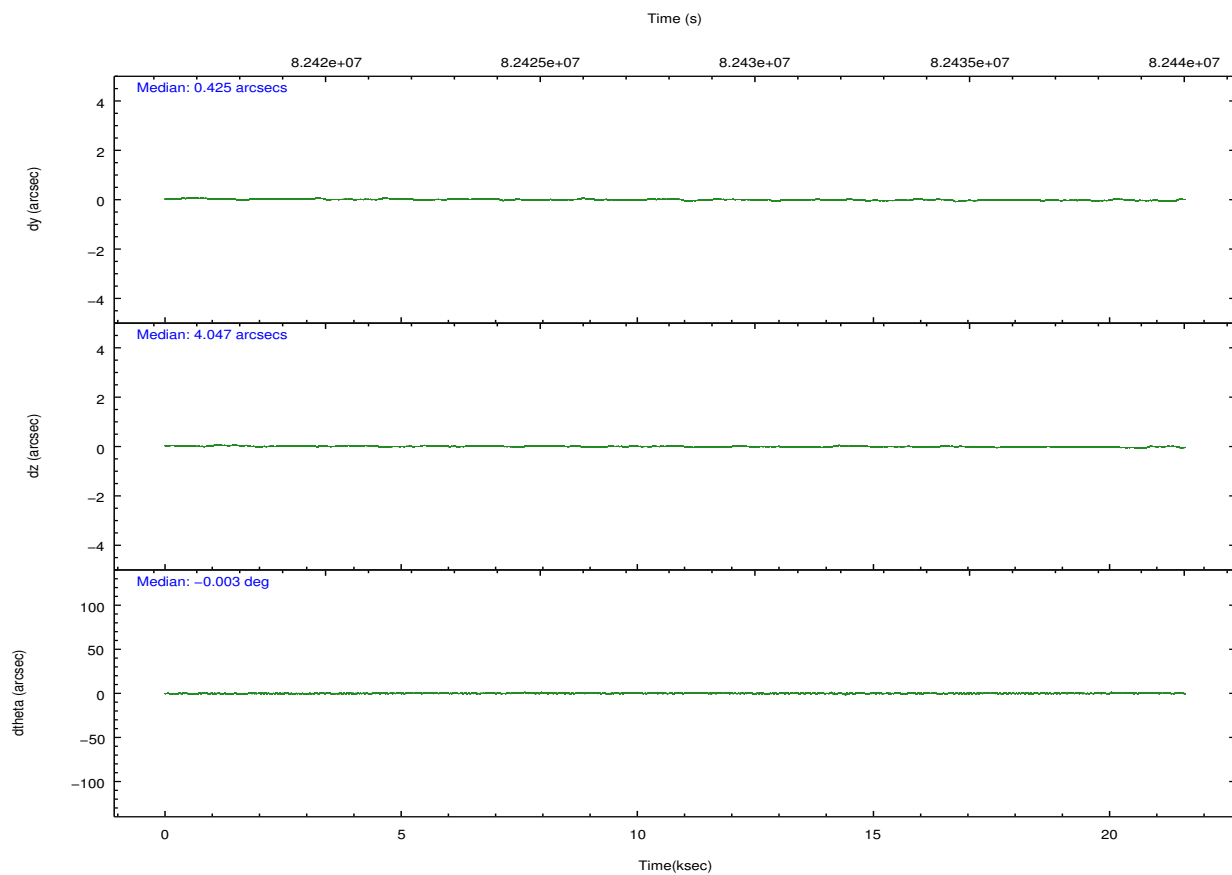
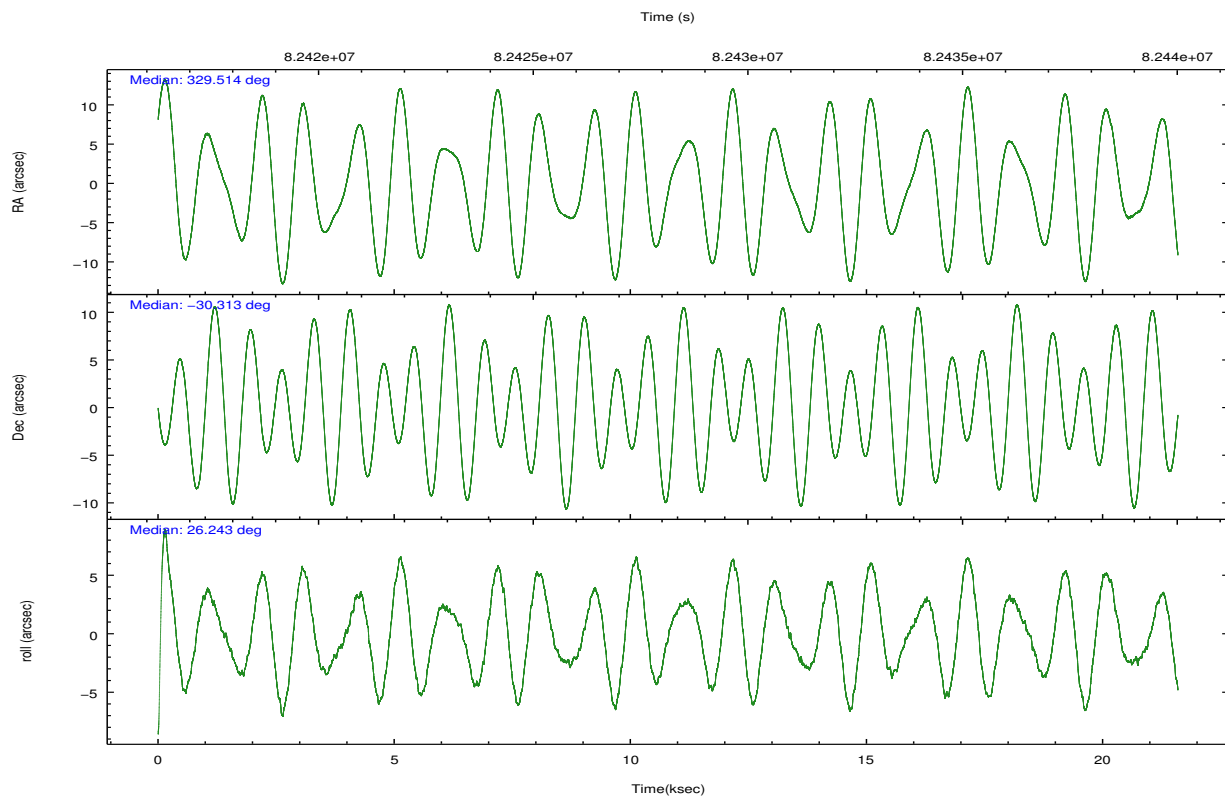
	ccd 4	ccd 5	ccd 6	ccd 7	ccd 8	ccd 9		ccd 4	ccd 5	ccd 6	ccd 7	ccd 8	ccd 9
level 1 events	140696	396220	138322	165502	153550	121110	grade 0 events	4780	156992	13817	14233	9709	2974
rejected events	123333	117987	110779	89787	122836	106185		3%	39%	9%	8%	6%	2%
rejected %	87%	29%	80%	54%	79%	87%	grade 1 events	49	324	56	86	76	17
								0%	0%	0%	0%	0%	0%
							grade 2 events	7505	40923	7415	14316	9585	6548
								5%	10%	5%	8%	6%	5%
							grade 3 events	734	12014	1109	4200	2133	786
								0%	3%	0%	2%	1%	0%
							grade 4 events	666	8799	1106	3787	2035	718
								0%	2%	0%	2%	1%	0%
							grade 5 events	2416	17289	2975	8698	3959	2928
								1%	4%	2%	5%	2%	2%
							grade 6 events	3679	59540	4102	39190	7255	3901
								2%	15%	2%	23%	4%	3%
							grade 7 events	120867	100339	107742	80992	118798	103238
								85%	25%	77%	48%	77%	85%

2.2 Compared Parameters

Parameter	Planned	Actual	Parameter	Planned	Actual
Instrument	ACIS	ACIS	Obspar format version number	6	6
Detector	ACIS-456789	ACIS-456789	Obspar file type	PREDICTED	ACTUAL
Grating	LETG	LETG	Obspar update status	NONE	UPDATED
Data mode	FAINT	FAINT	Number of optional ACIS chips dropped	0	0
Observation mode	POINTING	POINTING	On-chip summing requested	N	N
Pointing RA	329.496641	329.5141516179978	Subarray requested	NONE	NONE
Pointing Dec	-30.336238	-30.31339234319869	Alternating exposures requested	N	N
Pointing Roll	26.078633	26.24410610408855	Primary exposure time	0.000000	3.2
SIM focus pos (mm)	-0.684267	-0.6828225247311905			
SIM defocus (mm)	0	0.001444936568705701			
SIM translation stage pos (mm)	-182.131972	-182.1344861297048			
SIM translation stage offset (mm)	-8.000551	-7.998036453302973			
Observation start time	82417540.184000	82417161.92399301			
Observation start date	2000-08-11T21:44:36	2000-08-11T21:39:21			
Observation end time	82438940.184000	82439076.93731301			
Observation end date	2000-08-12T03:41:16	2000-08-12T03:44:36			
Read mode	TIMED	TIMED			

2.3 Aspect



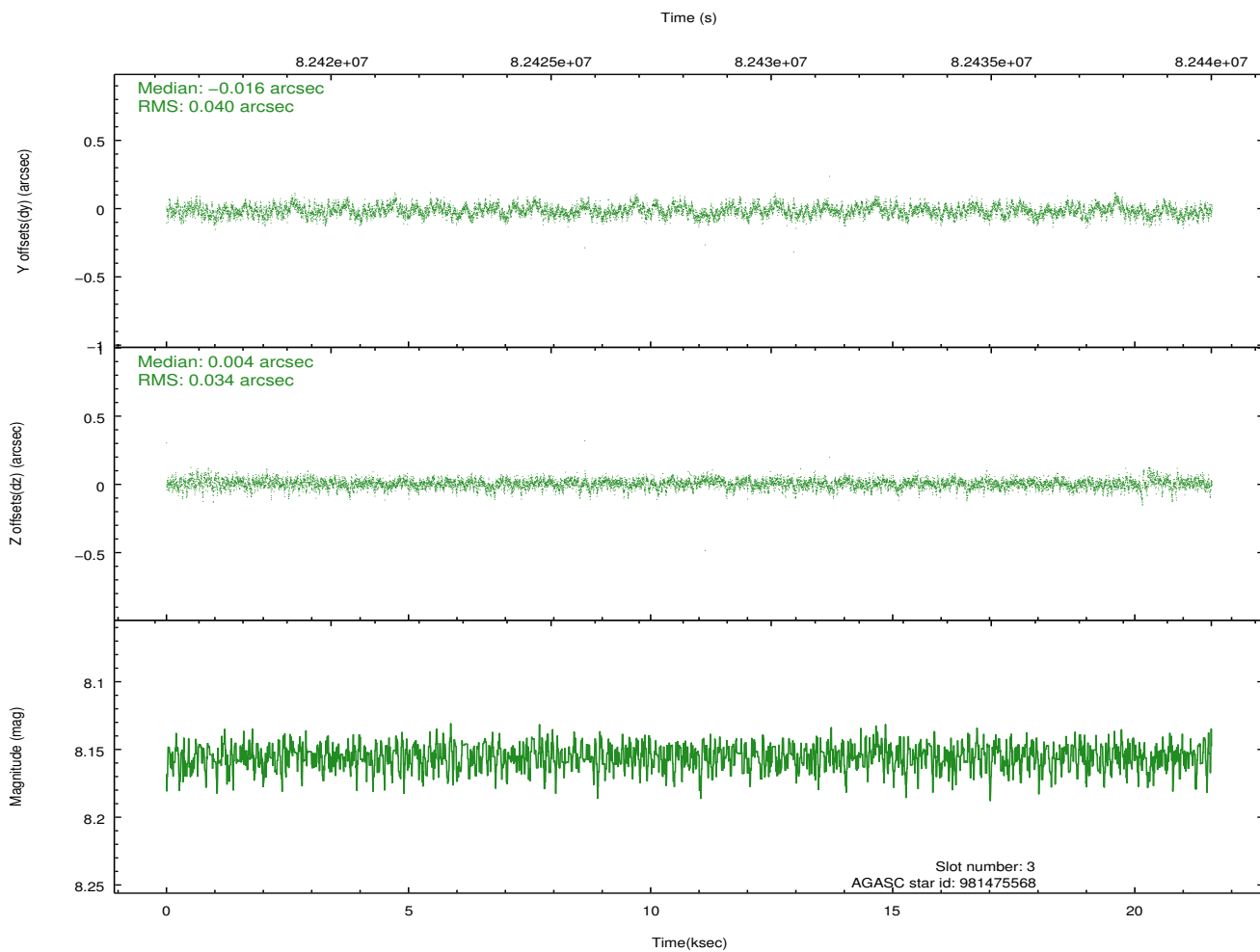
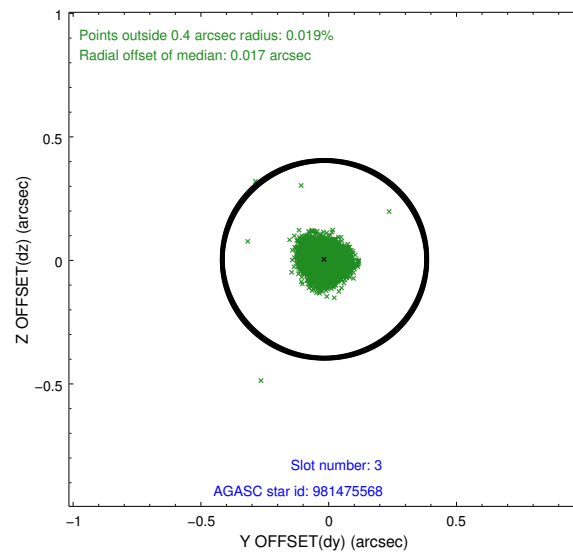
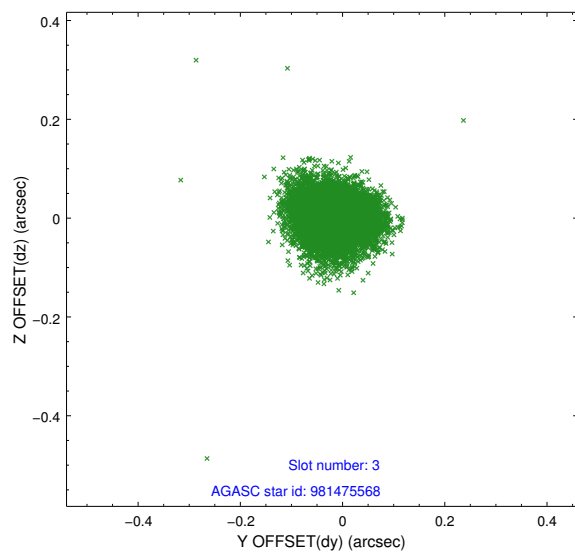


Slot Statistics

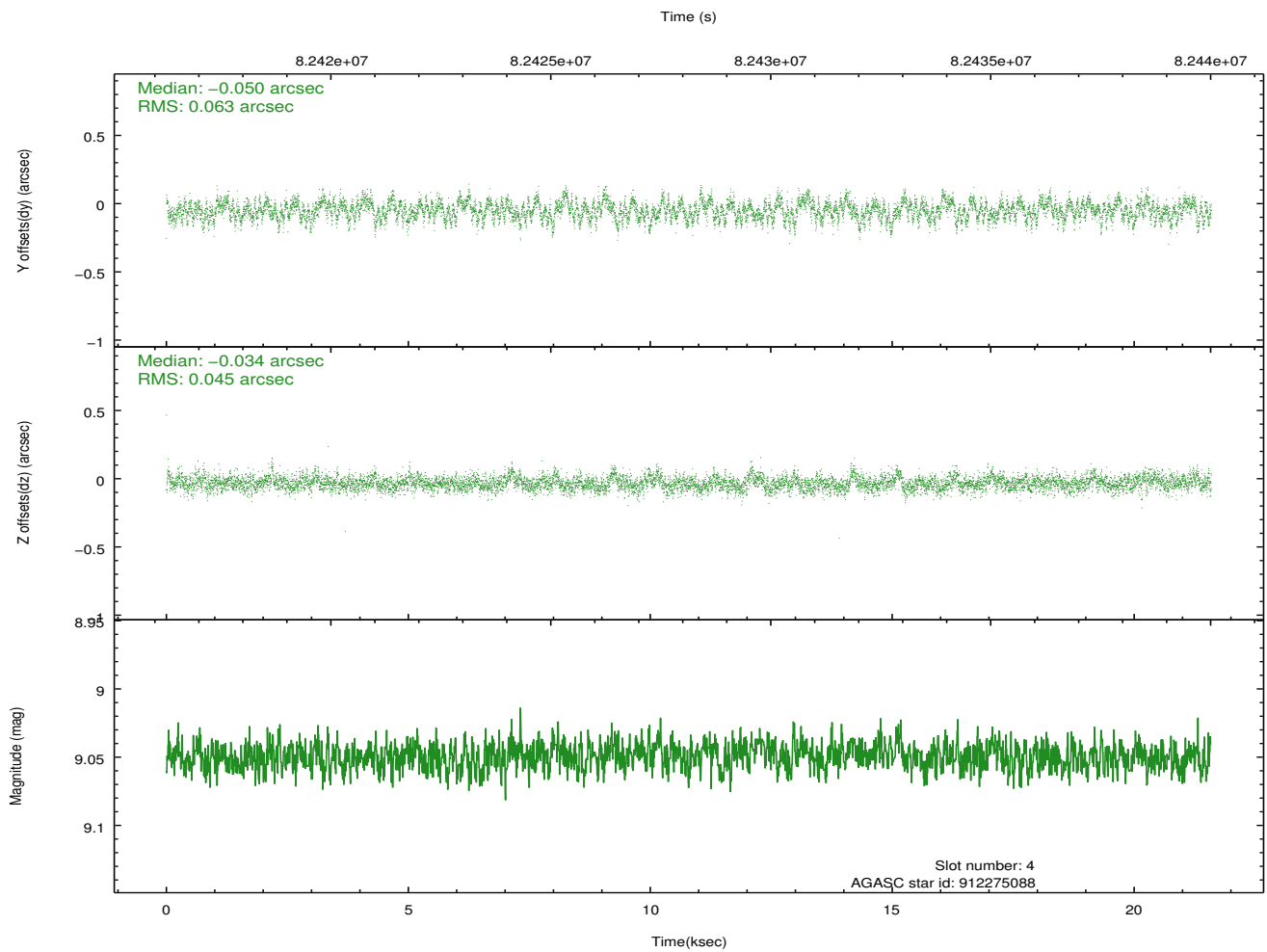
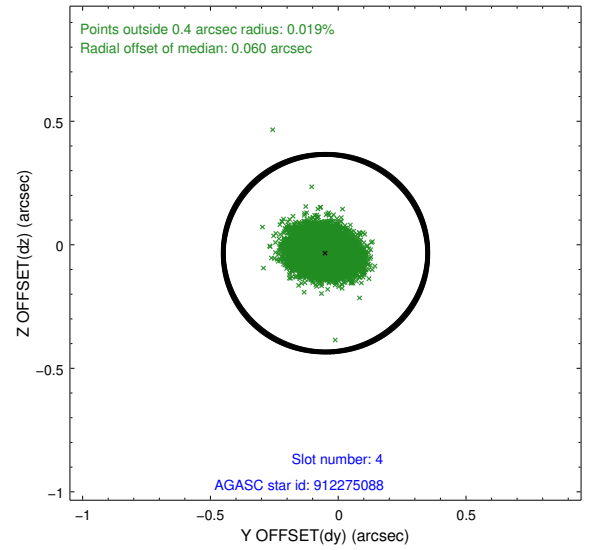
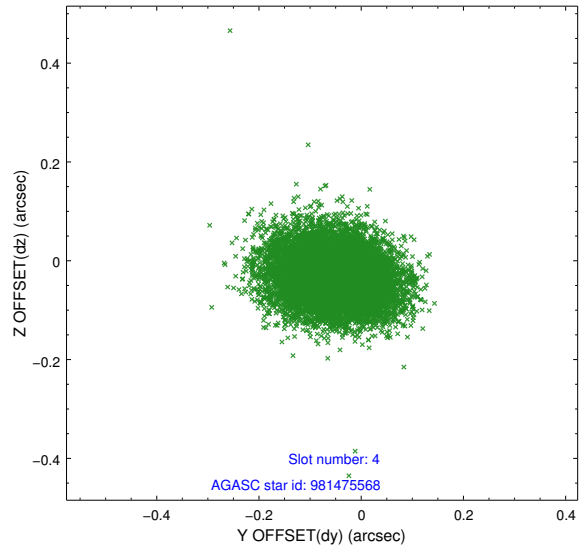
slot	status	id	mag	n_pts	med_dy	med_dz	dr1	dr2	ra	dec	mean_y	mean_z
0	FID	ACIS-S-2	7.10	5266	-0.049	-0.087	0.007	0.012	0.000000	0.000000	-752.50	-1889.97
1	FID	ACIS-S-4	7.18	5266	0.049	0.047	0.005	0.008	0.000000	0.000000	2160.83	18.39
2	FID	ACIS-S-5	7.22	5267	-0.031	0.048	0.007	0.012	0.000000	0.000000	-1805.09	12.31
3	GUIDE	981475568	8.16	10533	-0.016	0.004	0.055	0.091	328.999408	-30.923402	-2309.63	-1227.27
4	GUIDE	912275088	9.05	10531	-0.050	-0.034	0.082	0.135	329.619228	-29.738698	1289.86	1762.75
5	GUIDE	981478152	9.41	10528	-0.029	0.025	0.074	0.120	329.415589	-30.057192	215.19	1012.79
6	GUIDE	981468128	9.36	10528	0.099	-0.033	0.071	0.116	329.756350	-30.158334	1007.75	218.47
7	GUIDE	981469488	9.60	10531	-0.005	0.036	0.083	0.136	329.261199	-30.045155	-198.23	1262.49

2.4 Star Slots

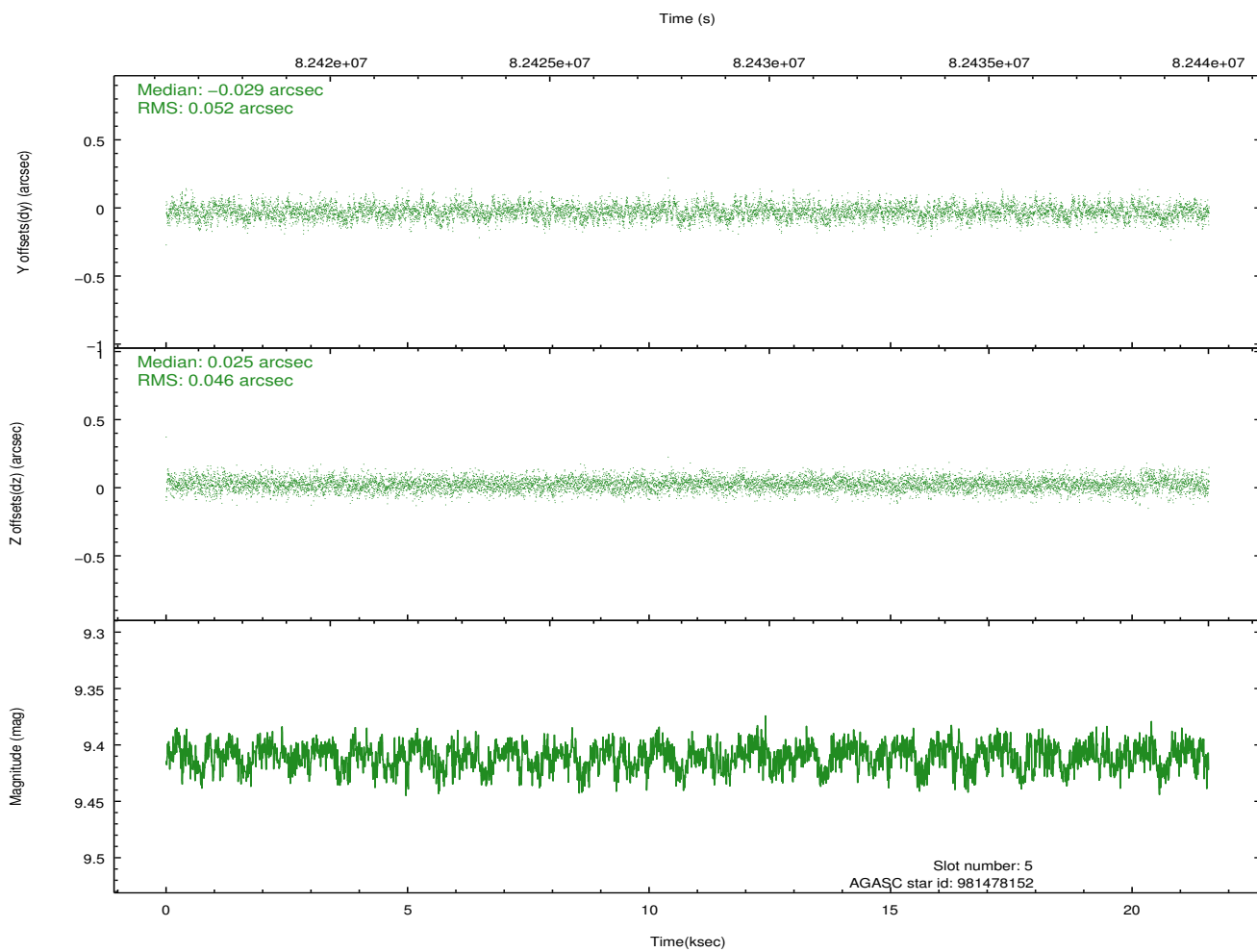
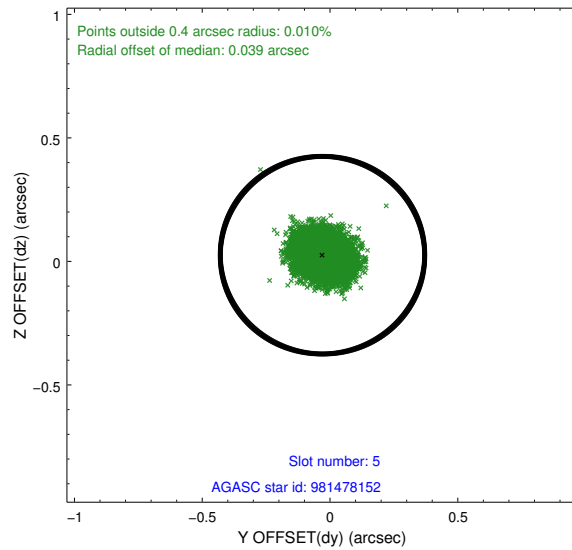
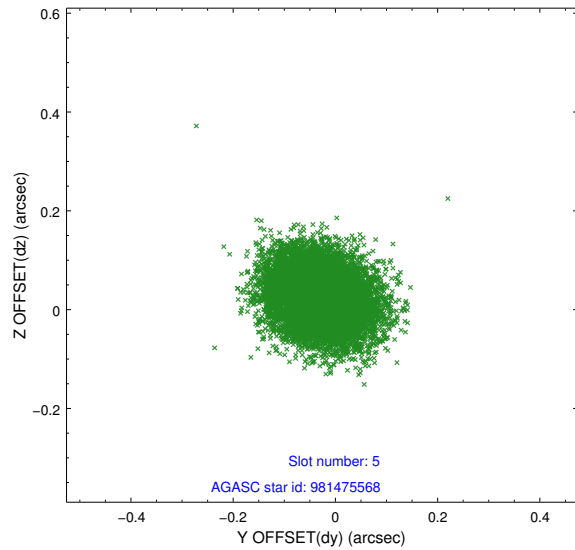
2.4.1 Slot 3



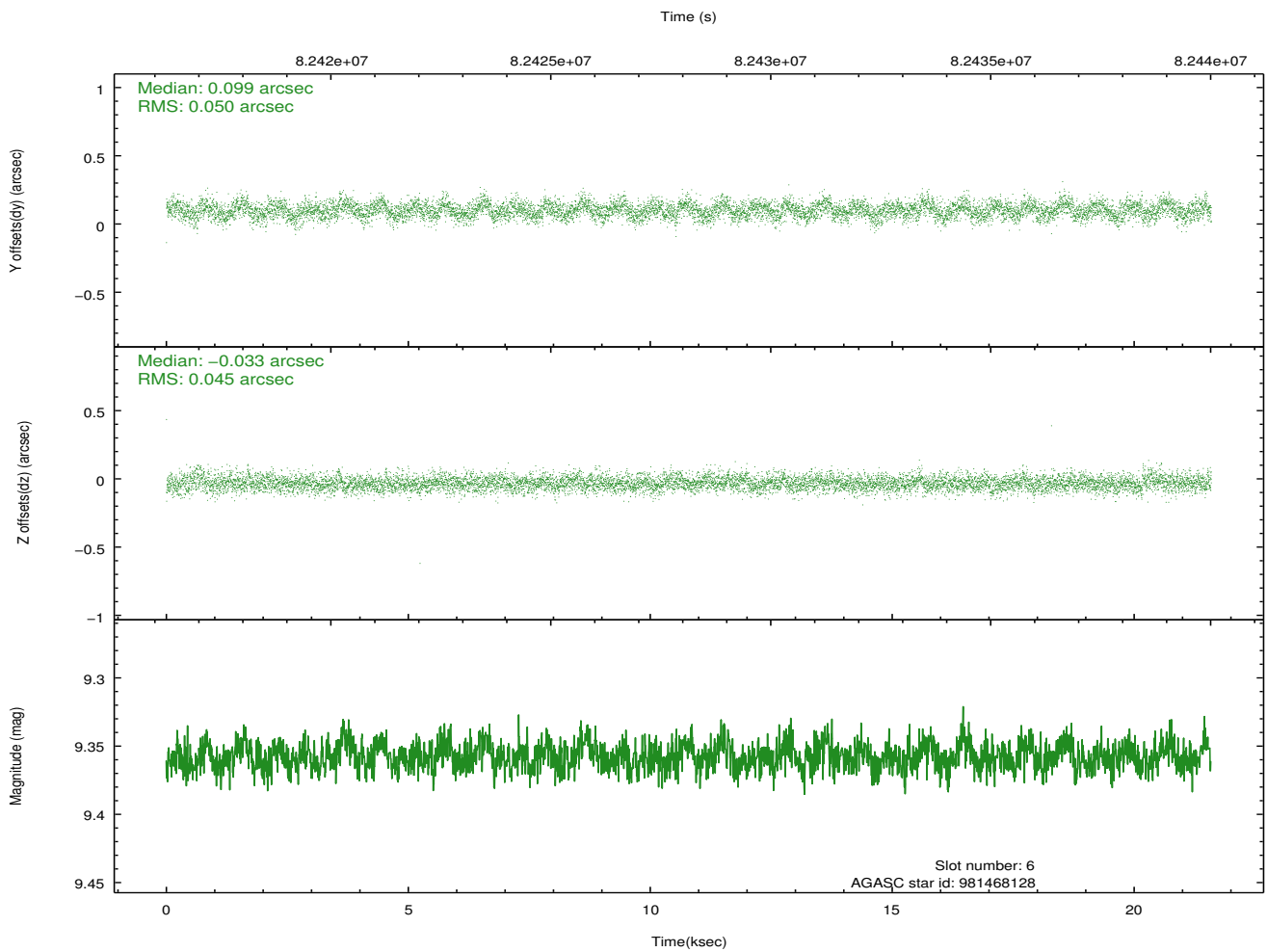
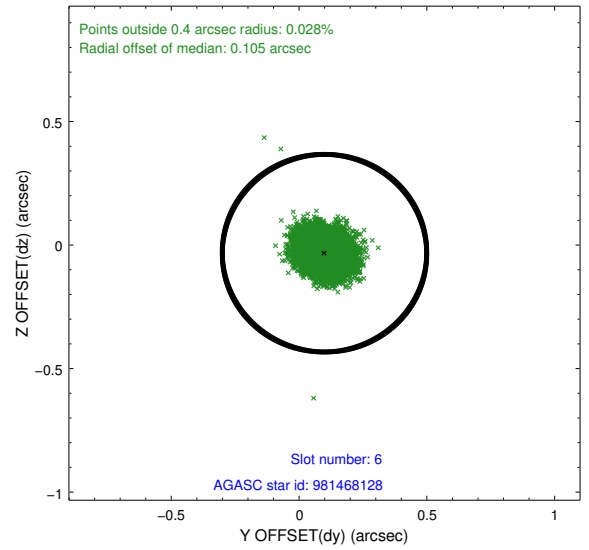
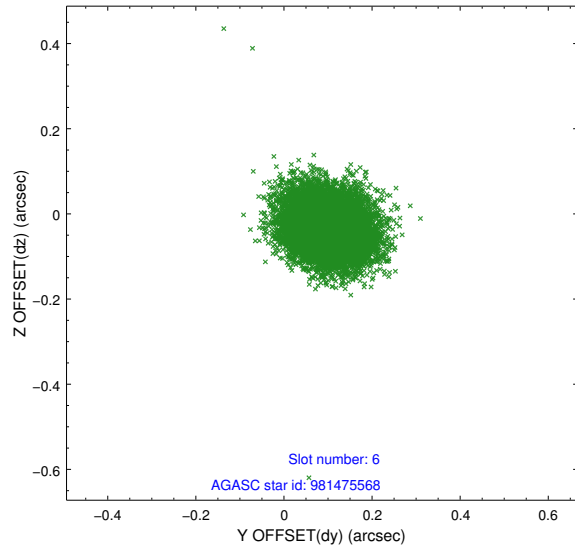
2.4.2 Slot 4



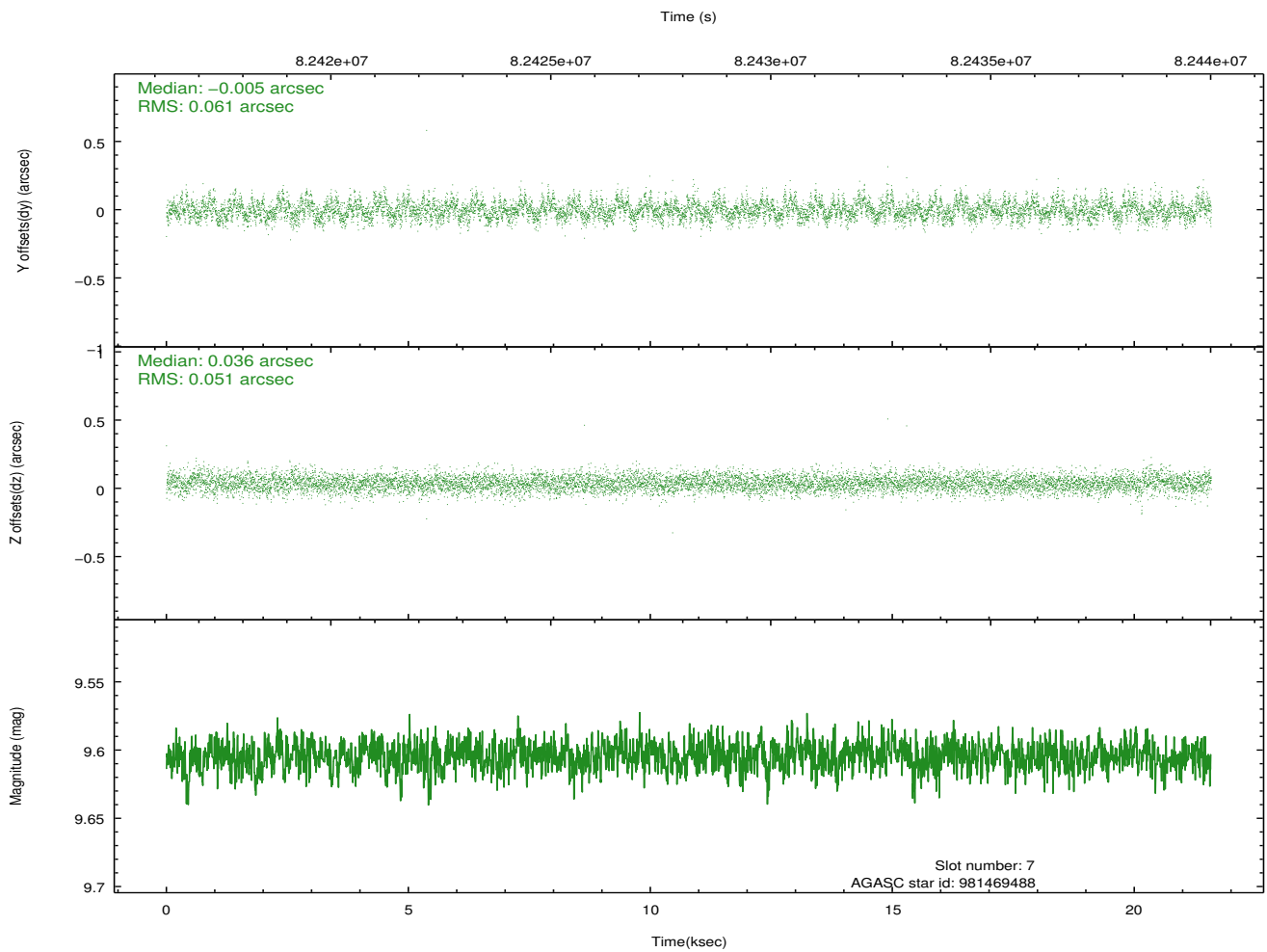
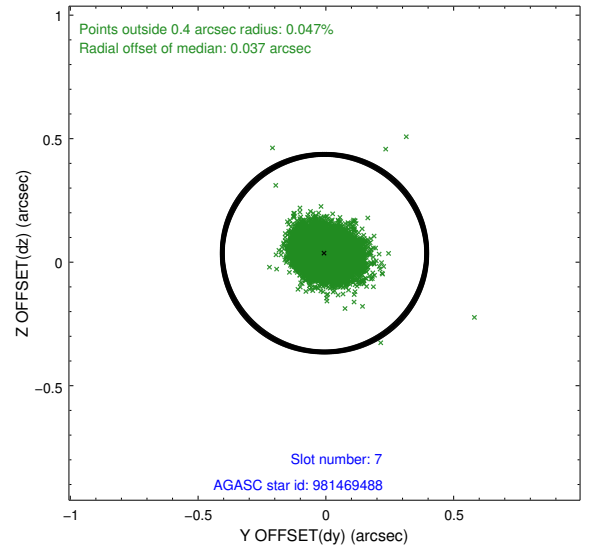
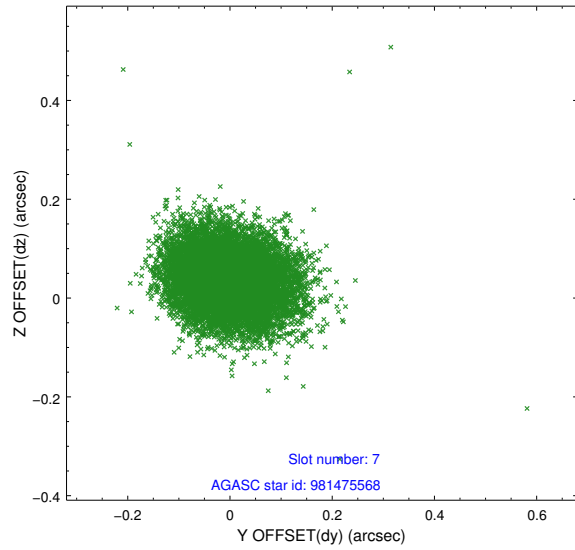
2.4.3 Slot 5



2.4.4 Slot 6

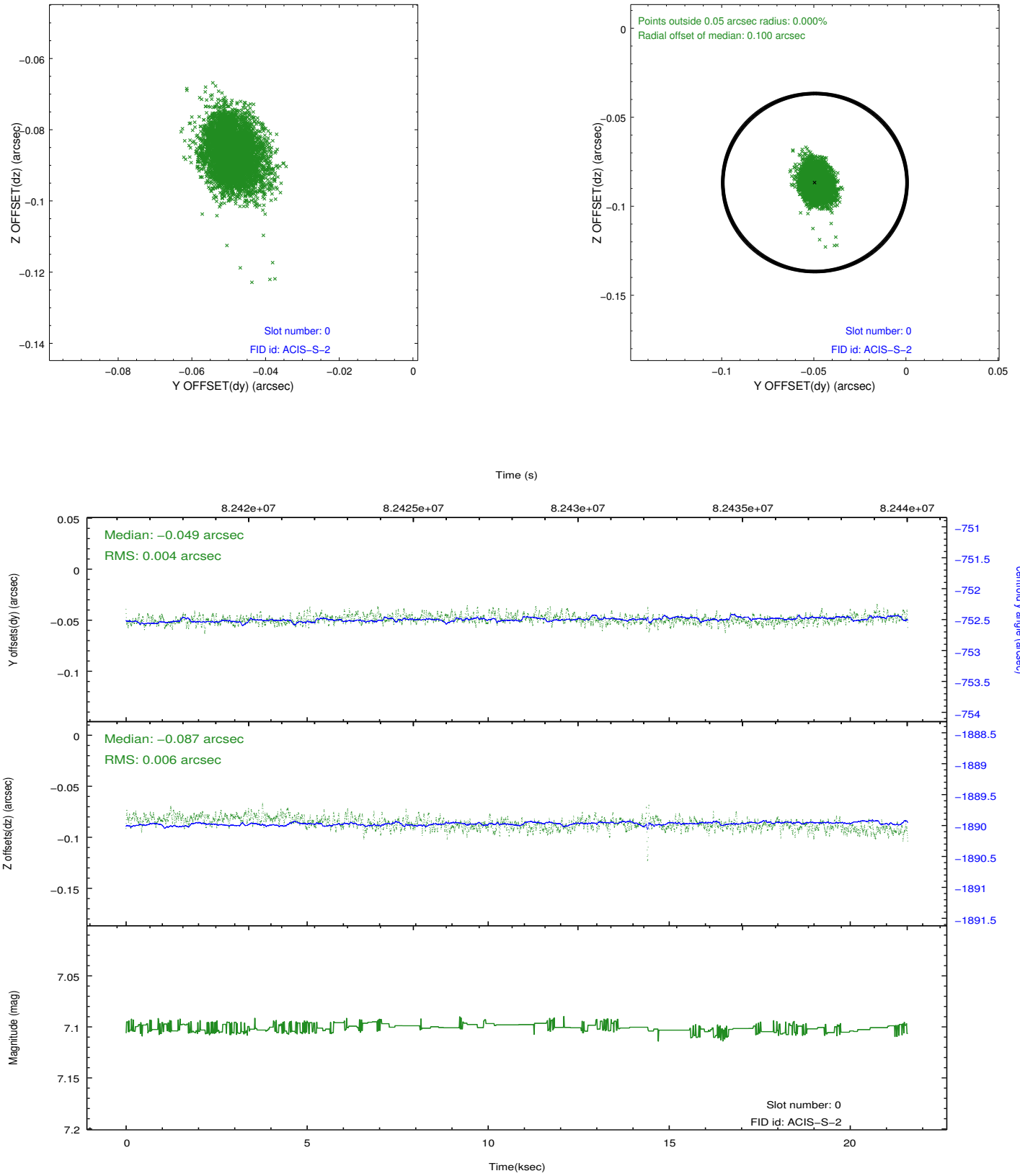


2.4.5 Slot 7

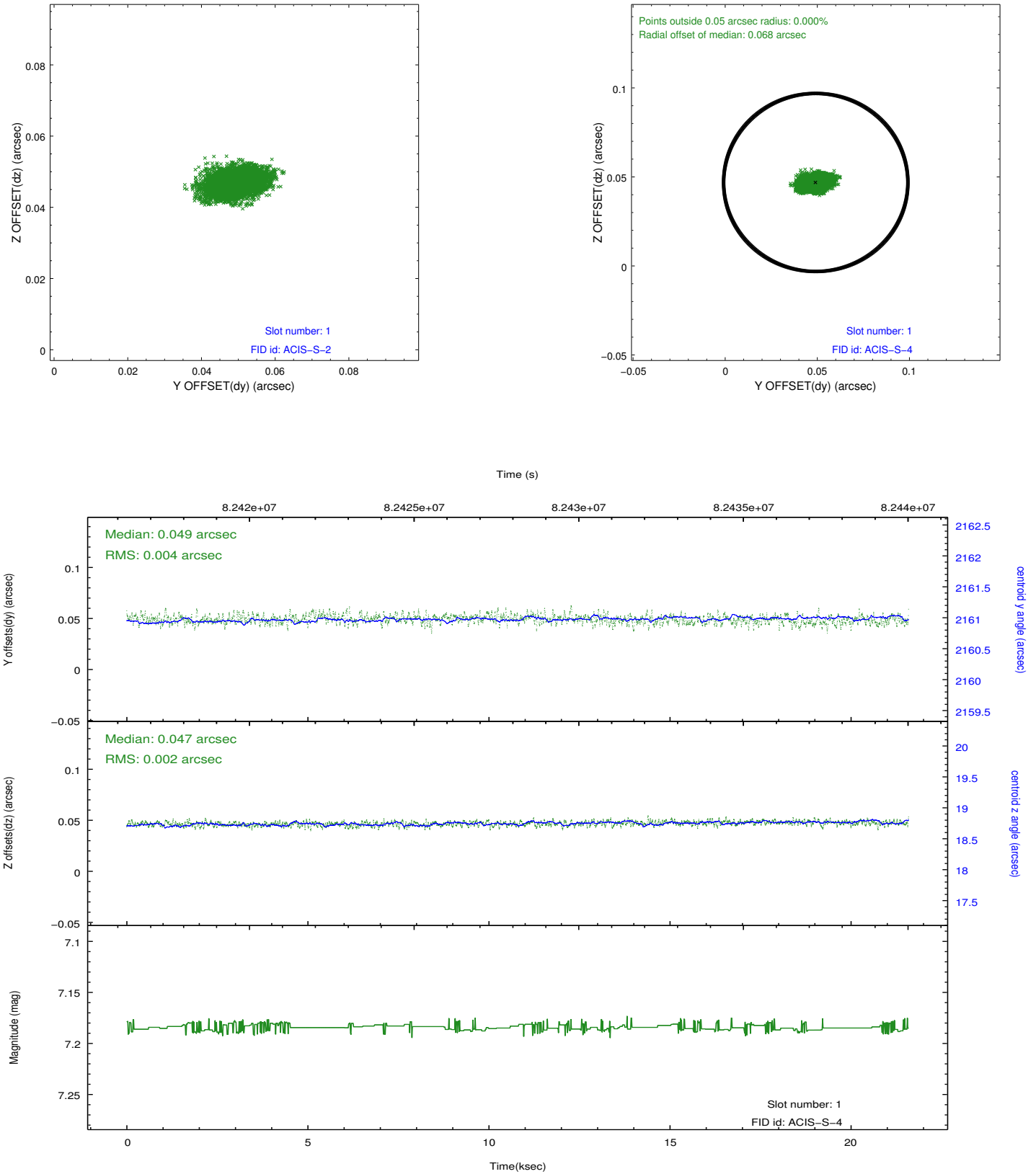


2.5 FID Slots

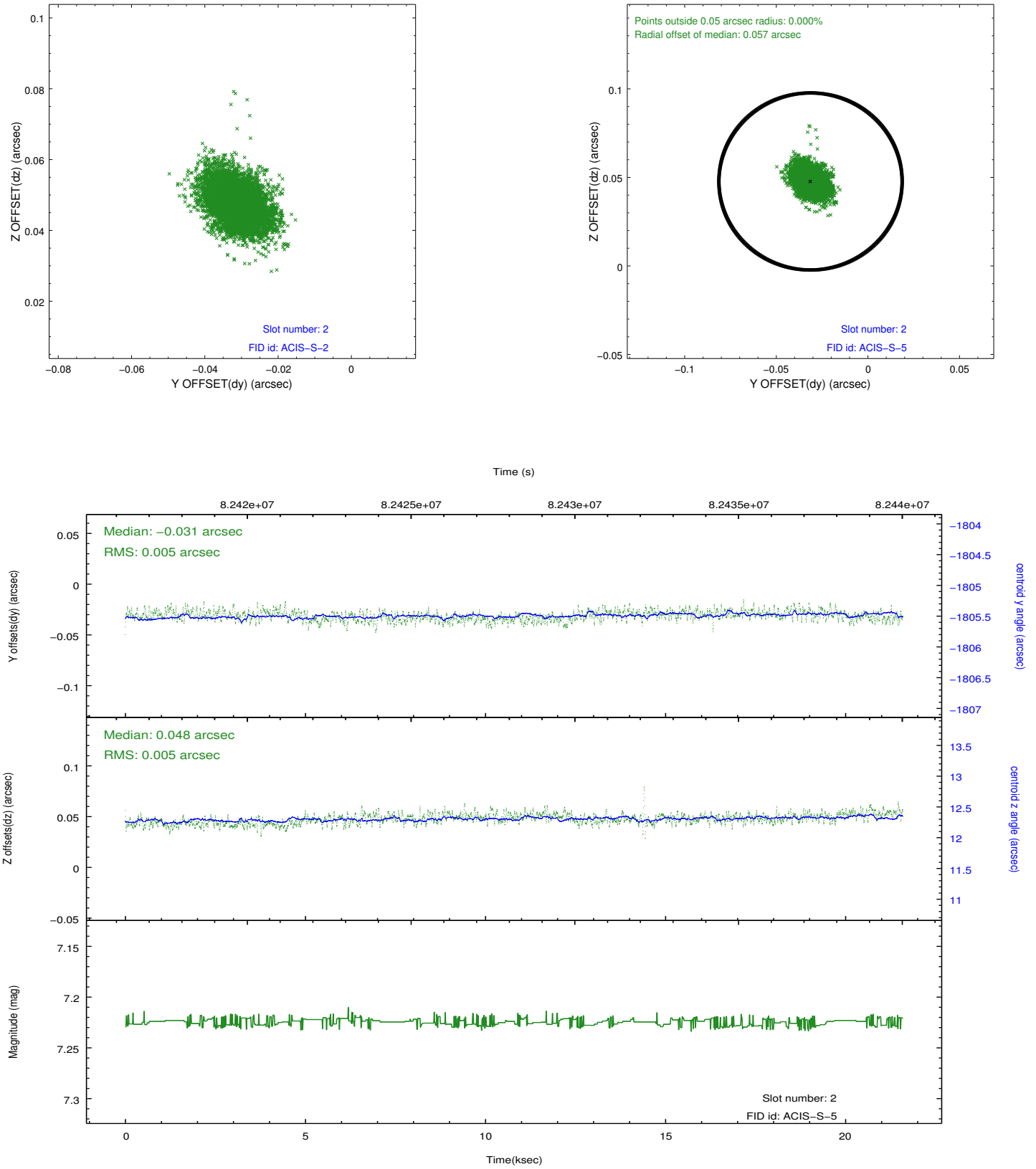
2.5.1 Slot 0



2.5.2 Slot 1



2.5.3 Slot 2

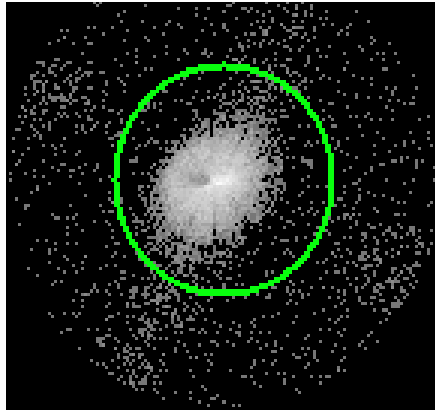


3 Gratings

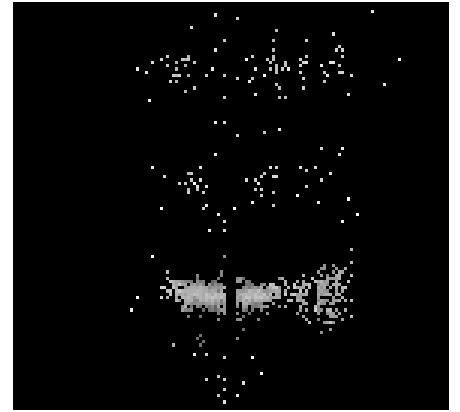
3.1 LETG Arm



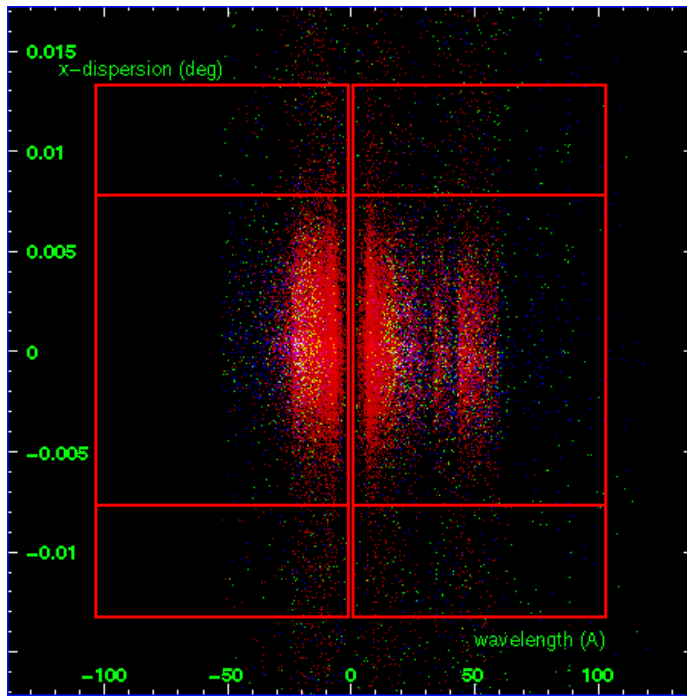
LETG Order Sort 123



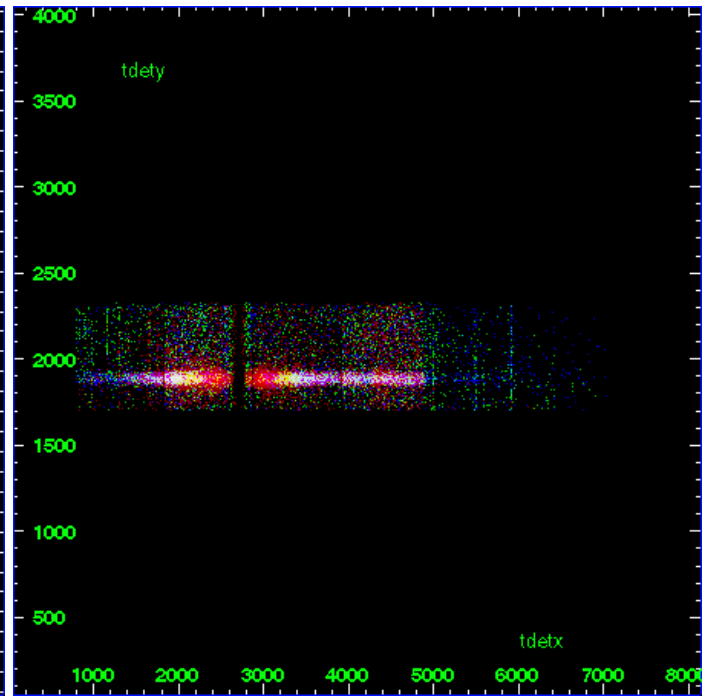
LETG Zero Order



LETG Order Sort ALL

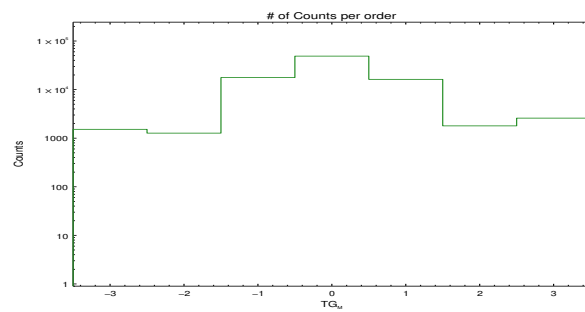


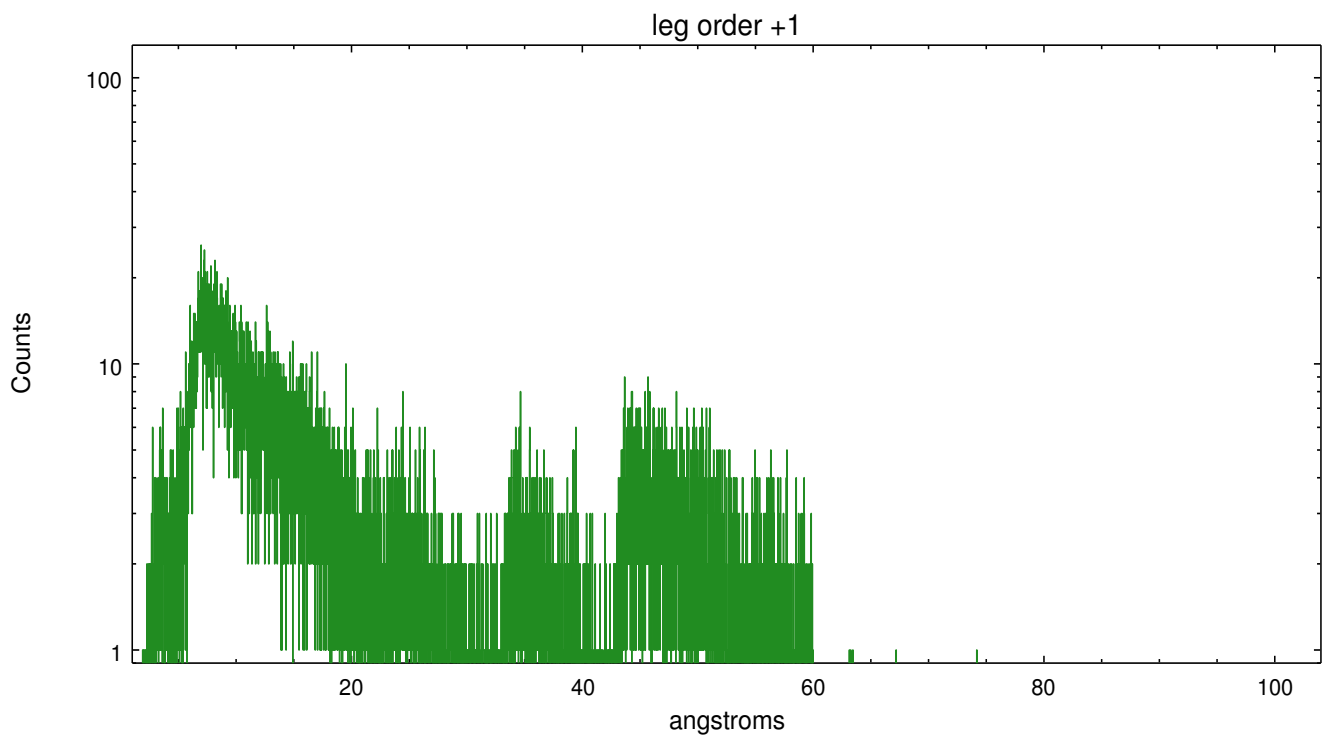
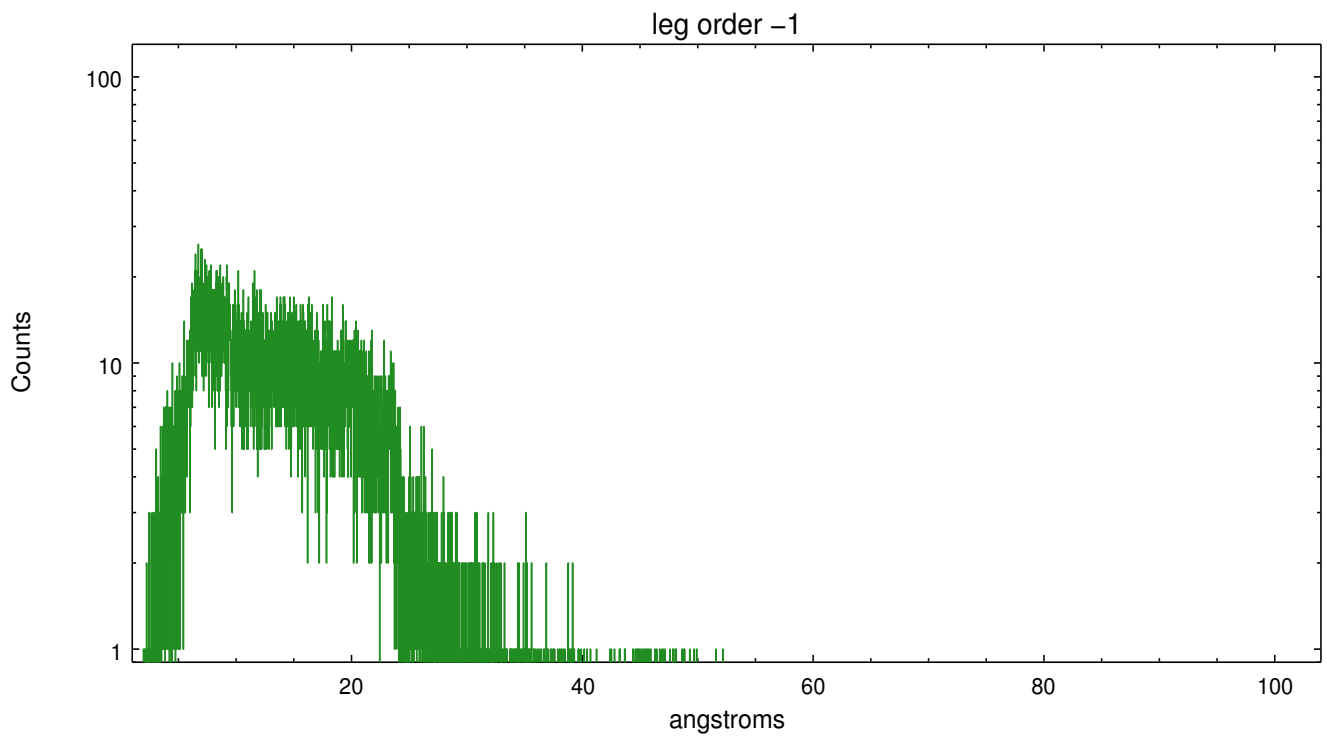
Spot Image LETG



Full Detector LETG

	order	order	order	order	order	order	order
	-3	-2	-1	0	1	2	3
Events	1521	1270	17676	48858	16241	1793	2586





A Summary

A.1 Status

V&V Scientist	David Huenemoerder
V&V Date (YYYY-MM-DD)	2010.01.07
V&V Edition	1
V&V Disposition and Status	OK
V&V Charge Time	21.161

A.2 Comments

Note: well off-axis and blurred.