

V&V Reference Report

L2 ASCDS Version : 8.4.5

Observation 1883 - L2 Version 3
Chandra X-Ray Center

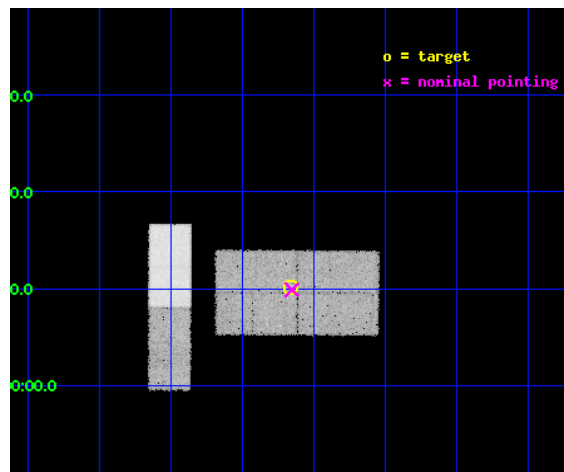
L2 Processing Date : Sep 24 2012

Contents

1	Front	2
2	OBI	3
2.1	OBI	3
2.1.1	Images	3
2.1.2	Bias	3
2.1.3	Parameters	4
2.1.4	Events	4
2.2	Compared Parameters	5
2.3	Aspect	6
2.4	Star Slots	9
2.4.1	Slot 3	9
2.4.2	Slot 4	10
2.4.3	Slot 5	11
2.4.4	Slot 6	12
2.4.5	Slot 7	13
2.5	FID Slots	14
2.5.1	Slot 0	14
2.5.2	Slot 1	15
2.5.3	Slot 2	16
A	Summary	17
A.1	Status	17
A.2	Comments	17

1 Front

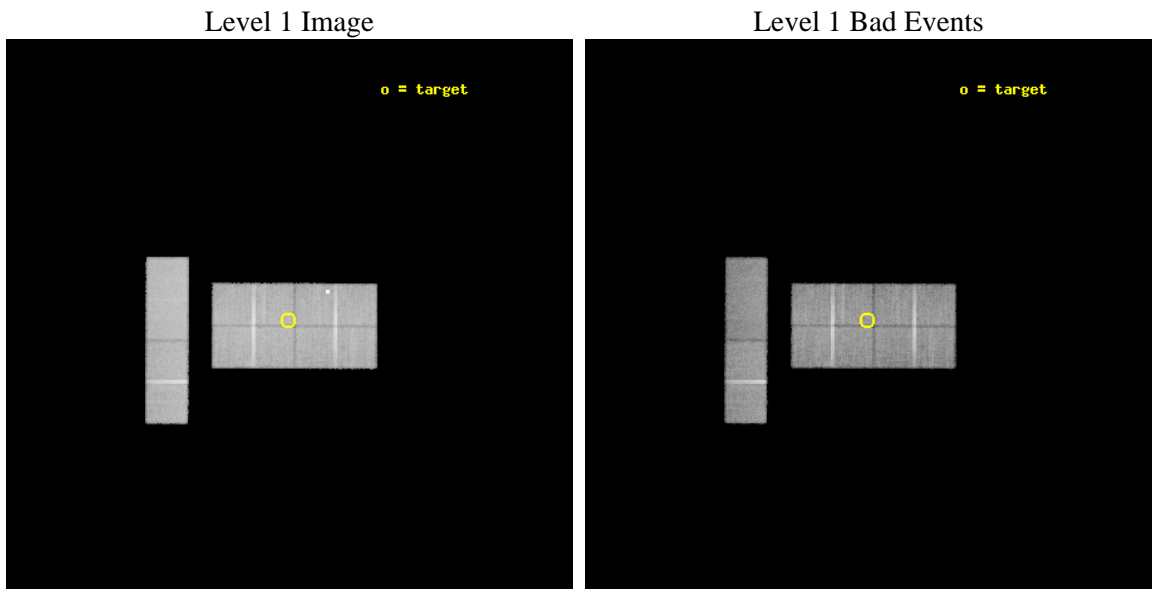
seq_num	200111	Sequence number
obs_id	1883	Observation id
title	REVEALING THE MAGNETIC ACTIVITIES ON HERBIG AE/BE STARS	Proposal t
observer	Dr. Shigeo Yamauchi	Principal investigator
object	MWC297	Source name
dtycycle	0	
cycle	P	events from which exps? Prim/Second/Both
ra_targ	276.915	Observer's specified target RA [deg]
dec_targ	-3.831111	Observer's specified target Dec [deg]
ra_nom	276.91316947949	Nominal RA [deg]
dec_nom	-3.8354670376775	Nominal Dec [deg]
roll_nom	270.27184862875	Nominal Roll [deg]
revision	3	Processing version of data
ontime	38181.517856777	Sum of GTIs [s]
livetime	37330.385077021	Livetime [s]
ontime0	38181.517856777	Sum of GTIs [s]
ontime1	38181.517856777	Sum of GTIs [s]
ontime2	38181.517856777	Sum of GTIs [s]
ontime3	38181.517856777	Sum of GTIs [s]
ontime6	38181.517856777	Sum of GTIs [s]
ontime7	38181.517856777	Sum of GTIs [s]
l2events	129608	Number of level 2 events



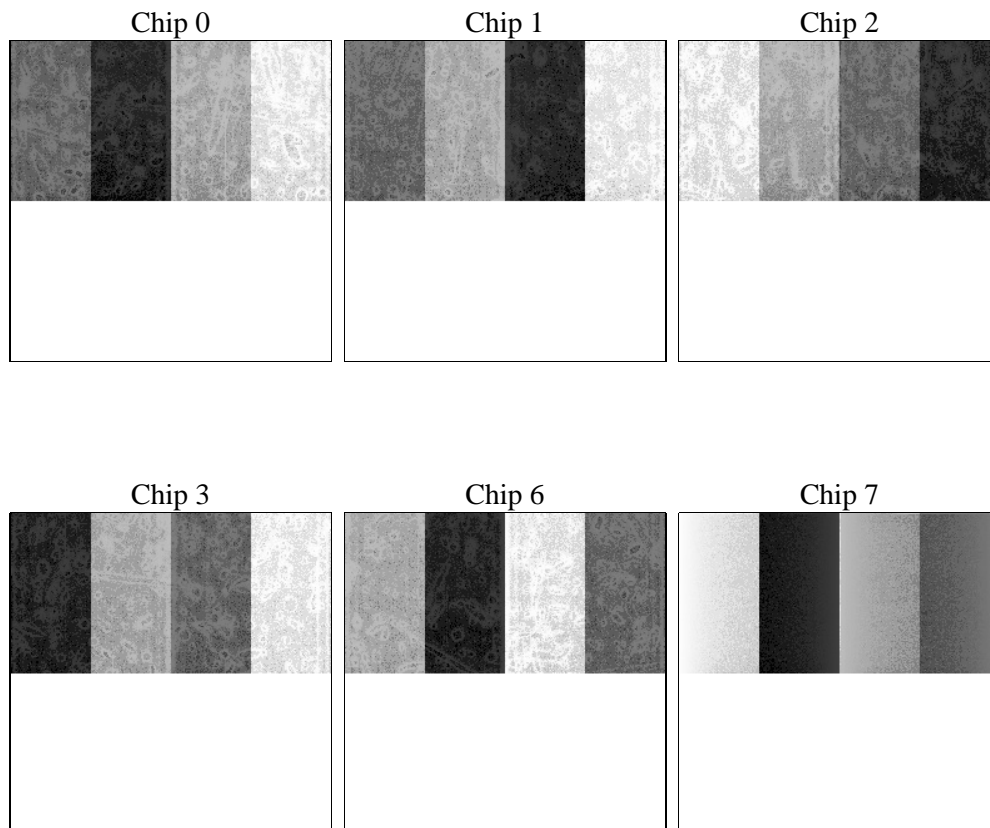
2 OBI

2.1 OBI

2.1.1 Images



2.1.2 Bias



2.1.3 Parameters

obi_num	0	Obi number	sched_exp_time	38050.000000	[s] Scheduled observation exposure time
ascdsver	8.4.5	Processing system revision	ontime	38181.517856777	Sum of GTIs [s]
caldbver	4.5.1.1	 	ontime0	38181.517856777	Sum of GTIs [s]
date	2012-09-24T12:42:03	Date and time of file creation	ontime1	38181.517856777	Sum of GTIs [s]
revision	3	Processing version of data	ontime2	38181.517856777	Sum of GTIs [s]
			ontime3	38181.517856777	Sum of GTIs [s]
			ontime6	38181.517856777	Sum of GTIs [s]
			ontime7	38181.517856777	Sum of GTIs [s]
			l1events	886486	Number of level 1 events

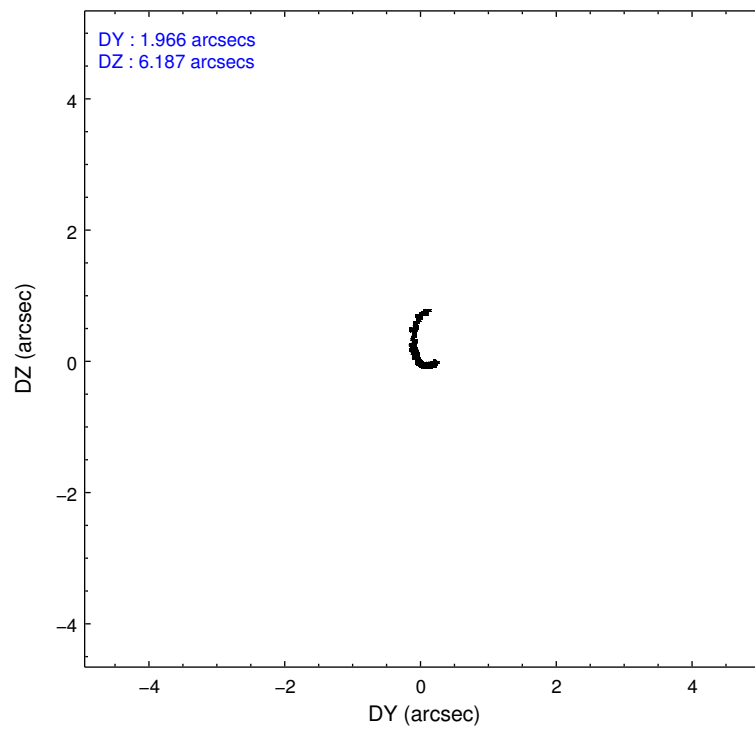
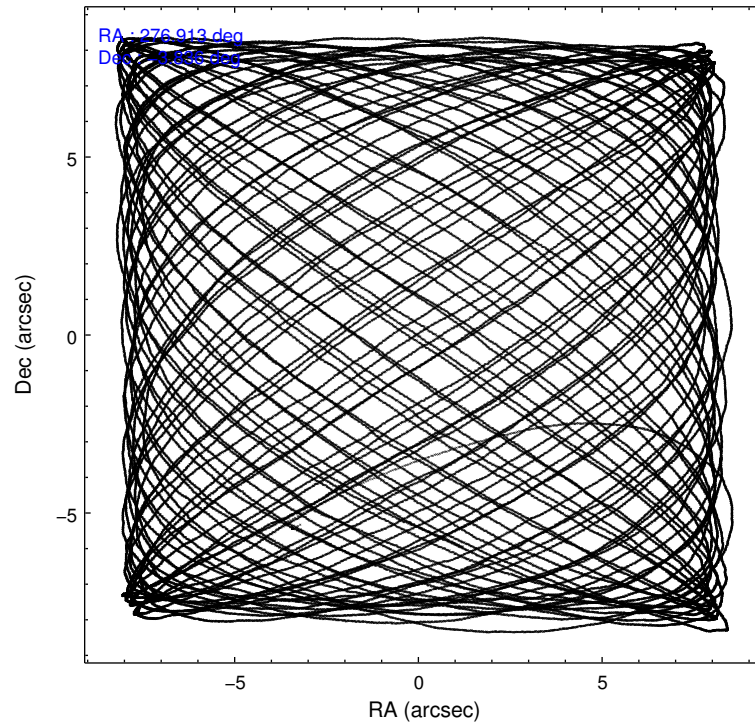
2.1.4 Events

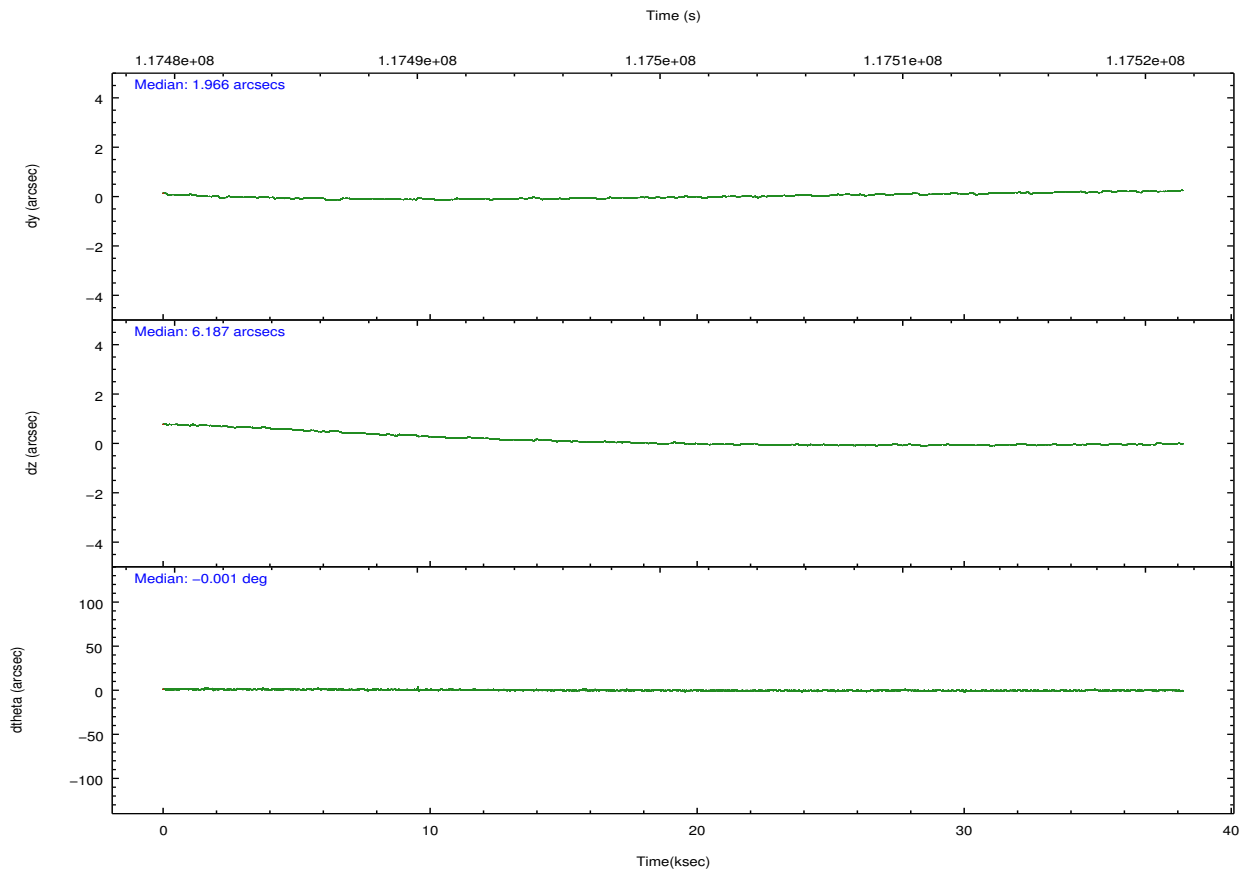
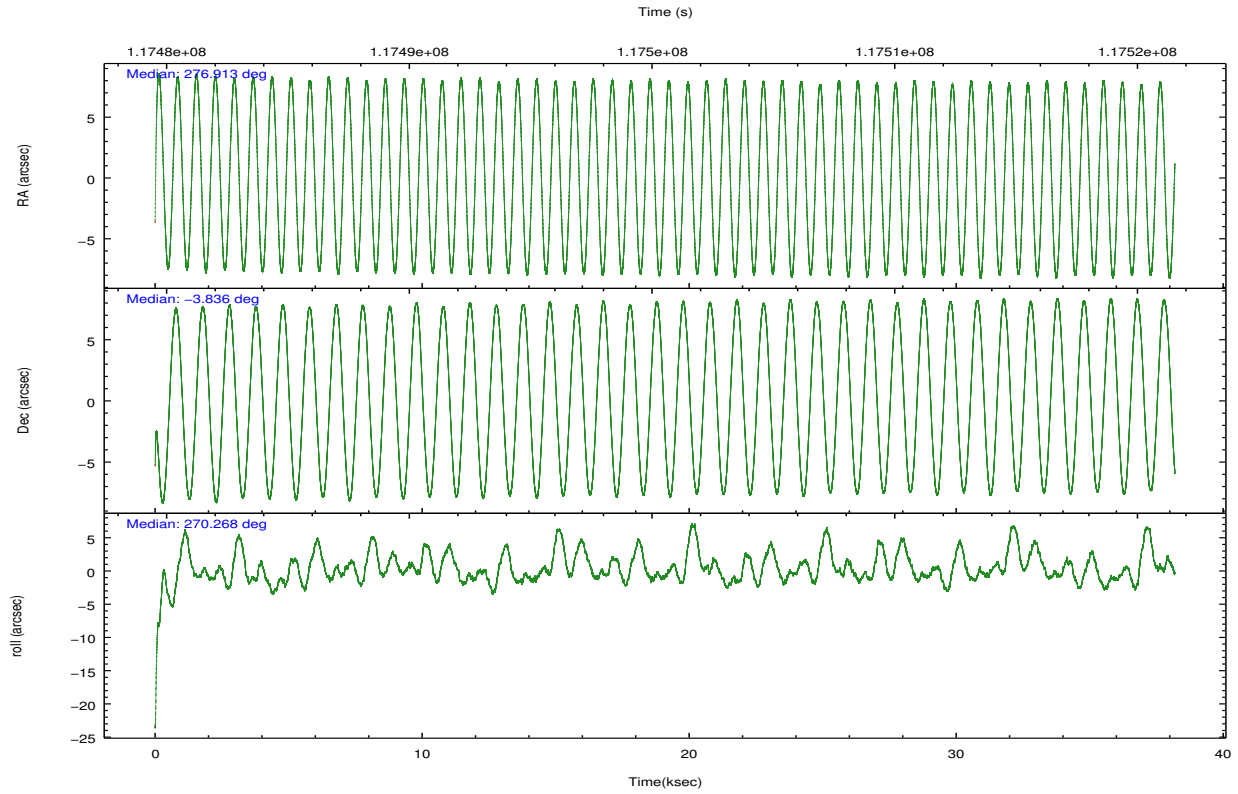
	ccd 0	ccd 1	ccd 2	ccd 3	ccd 6	ccd 7		ccd 0	ccd 1	ccd 2	ccd 3	ccd 6	ccd 7
level 1 events	131995	142428	145366	145901	151591	169205	grade 0 events	6143	11665	6103	6136	5754	6436
rejected events	116912	121602	130016	130820	136072	101213		4%	8%	4%	4%	3%	3%
rejected %	88%	85%	89%	89%	89%	59%	grade 1 events	77	61	52	71	67	175
								0%	0%	0%	0%	0%	0%
							grade 2 events	3286	3201	3209	2932	3106	13603
								2%	2%	2%	2%	2%	8%
							grade 3 events	1714	1824	1823	1852	1868	6699
								1%	1%	1%	1%	1%	3%
							grade 4 events	1621	1724	1754	1744	1908	6896
								1%	1%	1%	1%	1%	4%
							grade 5 events	4940	5259	4723	5219	5980	16491
								3%	3%	3%	3%	3%	9%
							grade 6 events	2632	2830	2780	2724	3217	35701
								1%	1%	1%	1%	2%	21%
							grade 7 events	111582	115864	124922	125223	129691	83204
								84%	81%	85%	85%	85%	49%

2.2 Compared Parameters

Parameter	Planned	Actual	Parameter	Planned	Actual
Instrument	ACIS	ACIS	Obspar format version number	7	7
Detector	ACIS-012367	ACIS-012367	Obspar file type	PREDICTED	ACTUAL
Grating	NONE	NONE	Obspar update status	NONE	UPDATED
Data mode	FAINT	FAINT	Number of optional ACIS chips dropped	0	0
Observation mode	POINTING	POINTING	On-chip summing requested	N	N
[deg] Pointing RA	276.899276	276.9131694794896	Subarray requested	CUSTOM	1/2
[deg] Pointing Dec	-3.811795	-3.835467037677492	Subarray start row	513	513
[deg] Pointing Roll	270.062236	270.2718486287513	Subarray row count	512	512
[mm] SIM focus pos	-0.782348	-0.7809083437167272	Alternating exposures requested	N	N
[mm] SIM defocus	0	0.001439871863259334	[s] Primary exposure time	0.000000	1.8
[mm] SIM translation stage pos	-233.592463	-233.5874344608287			
[mm] SIM translation stage offset	0	-0.005018542100998502			
[s] Observation start time (MET)	117481582.184000	117480370.96294			
Observation start date	2001-09-21T17:45:18	2001-09-21T17:26:10			
[s] Observation end time (MET)	117519632.184000	117520063.06451			
Observation end date	2001-09-22T04:19:28	2001-09-22T04:27:43			
Read mode	TIMED	TIMED			

2.3 Aspect



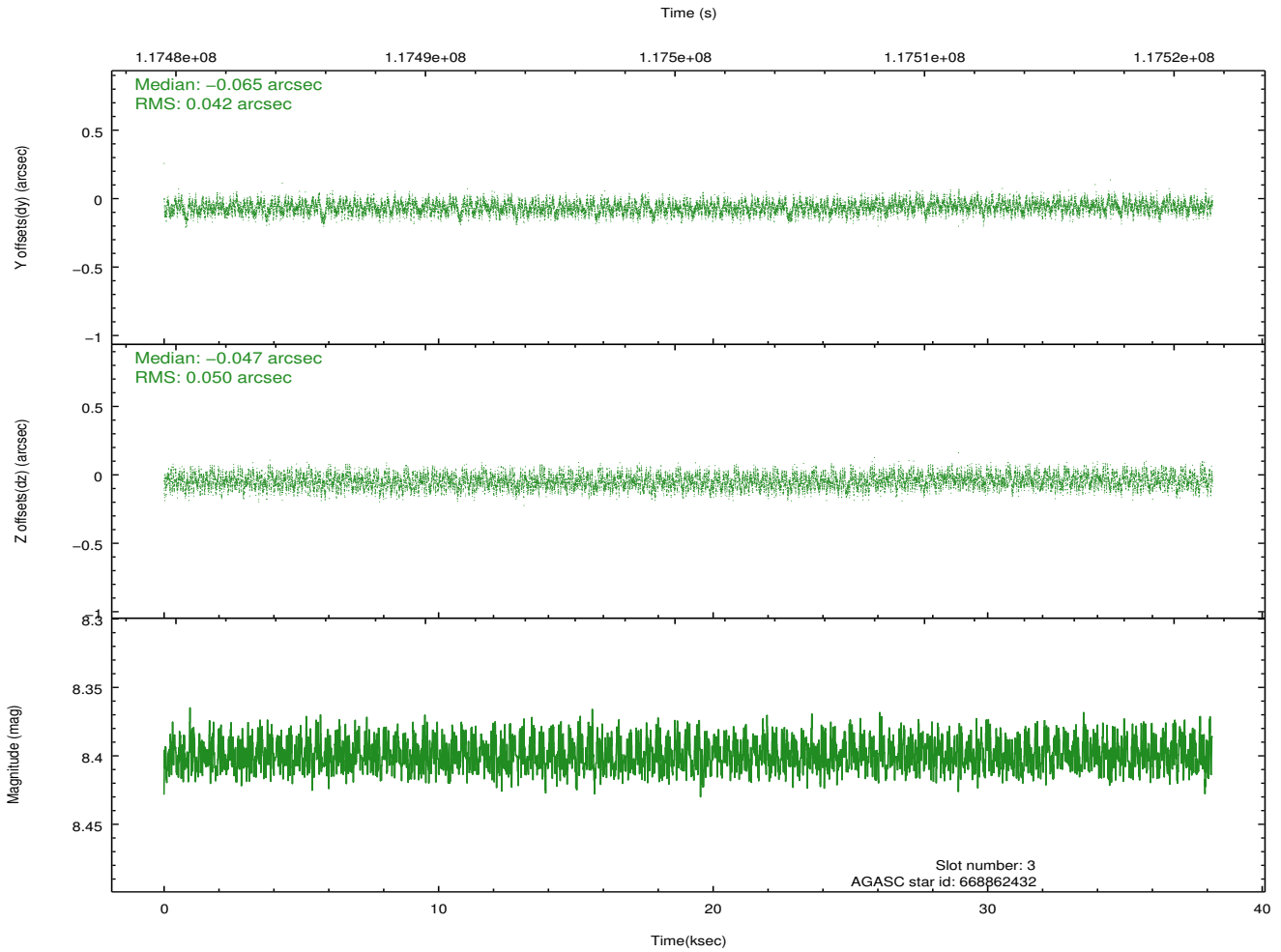
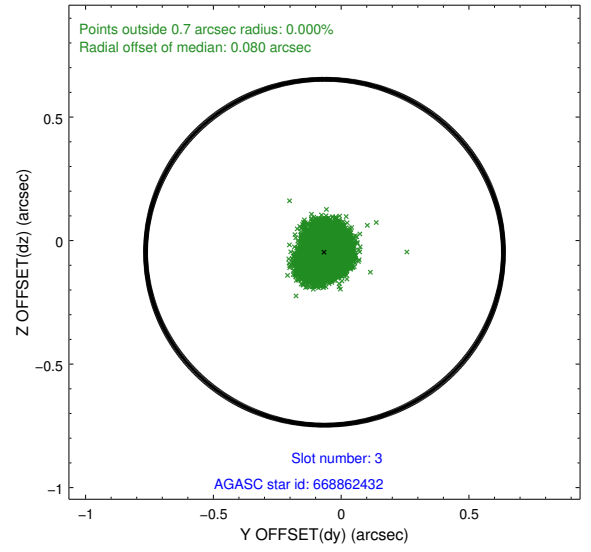
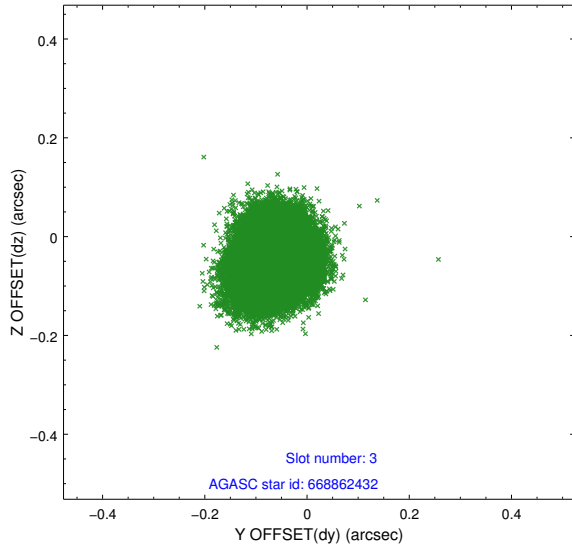


Slot Statistics

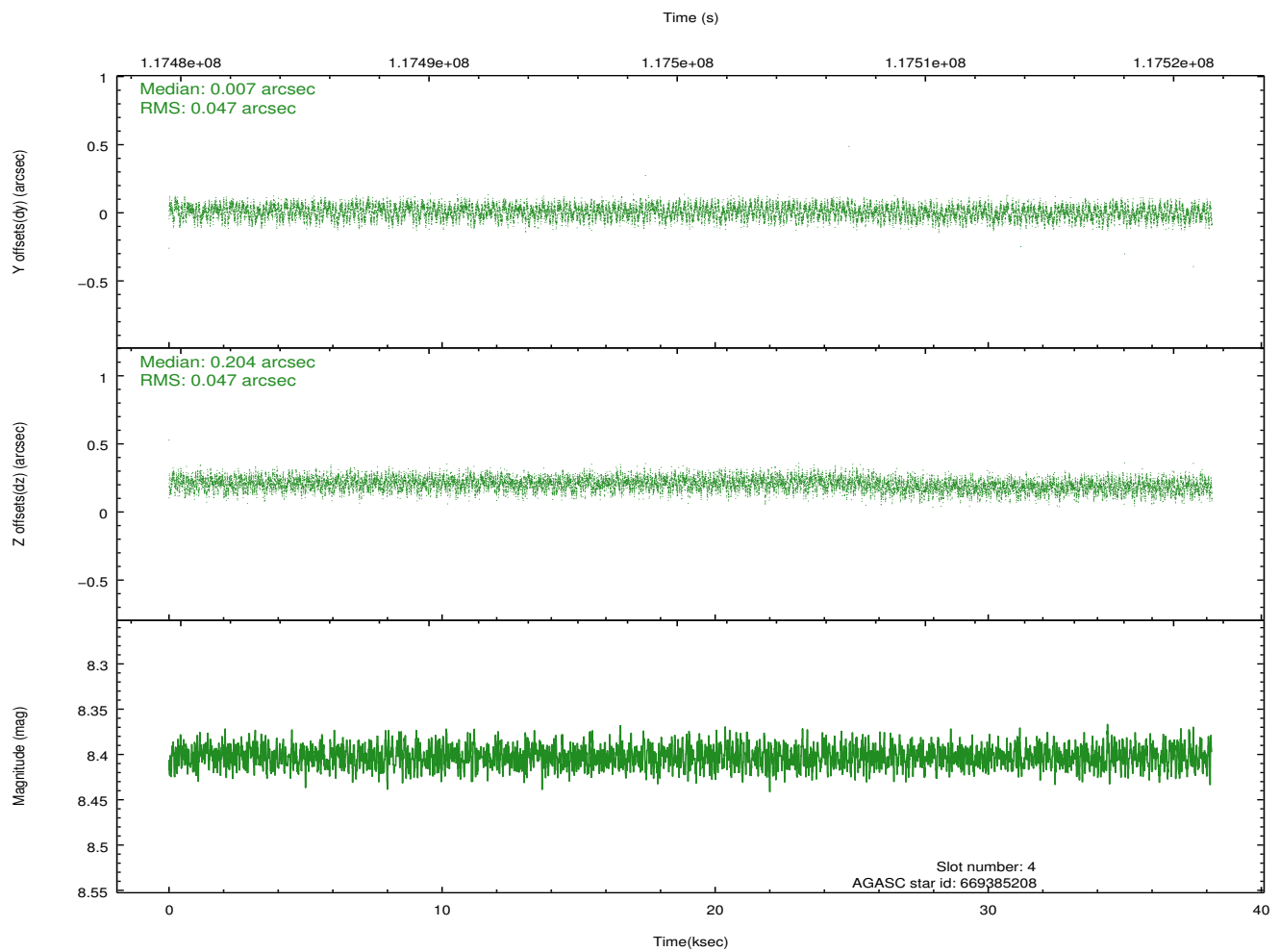
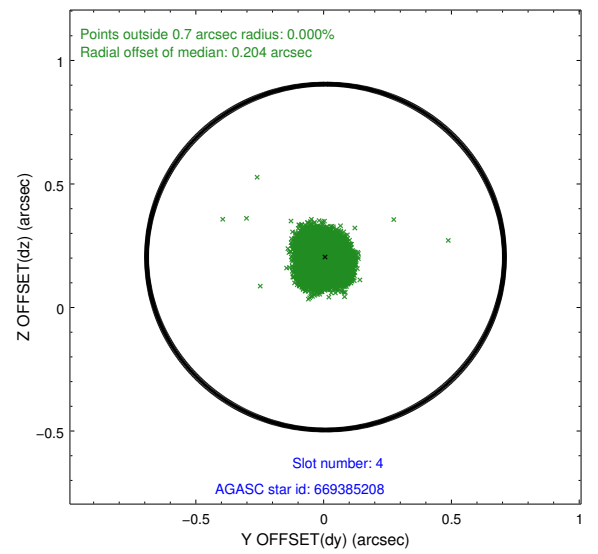
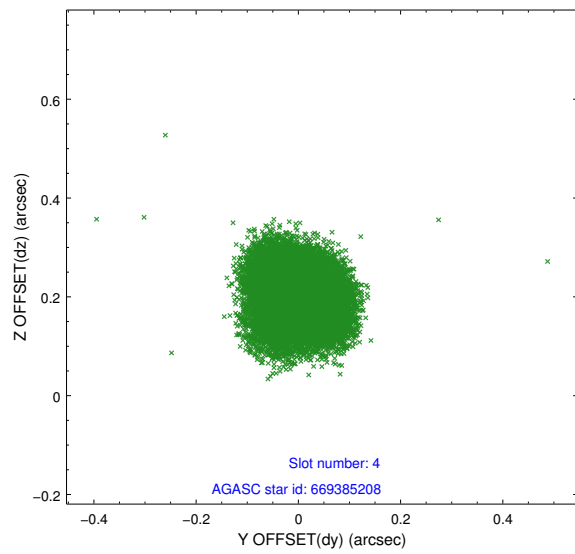
slot	status	id	mag	n_pts	med_dy	med_dz	dr1	dr2	ra	dec	mean_y	mean_z
0	FID	ACIS-I-1	7.25	9313	-0.006	0.014	0.013	0.023	0.000000	0.000000	937.81	-829.71
1	FID	ACIS-I-5	7.24	9312	-0.045	0.045	0.013	0.024	0.000000	0.000000	-1810.28	1067.84
2	FID	ACIS-I-6	7.26	9314	-0.042	0.009	0.010	0.016	0.000000	0.000000	403.34	1712.30
3	GUIDE	668862432	8.40	18625	-0.065	-0.047	0.071	0.107	276.346137	-3.350697	-1661.74	-1985.84
4	GUIDE	669385208	8.40	18624	0.007	0.204	0.071	0.112	277.478886	-3.985344	627.25	2081.48
5	GUIDE	669385504	8.49	18620	0.107	-0.078	0.066	0.105	276.908209	-3.936987	450.83	32.14
6	GUIDE	668862544	9.02	18496	-0.079	-0.040	0.084	0.132	276.389039	-3.501359	-1119.22	-1831.68
7	GUIDE	668862152	10.13	18604	0.030	-0.036	0.110	0.183	276.456881	-3.638367	-625.86	-1588.44

2.4 Star Slots

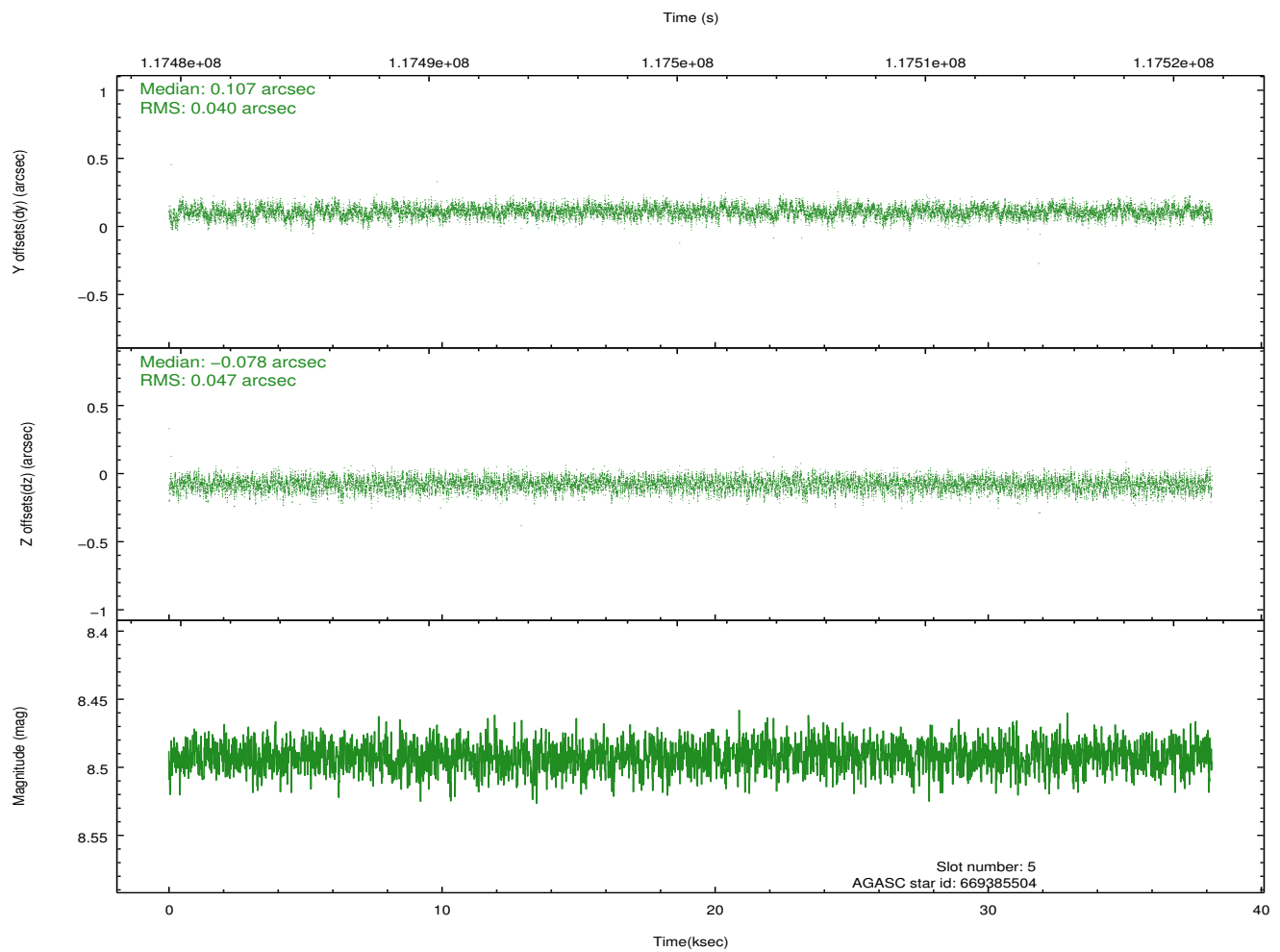
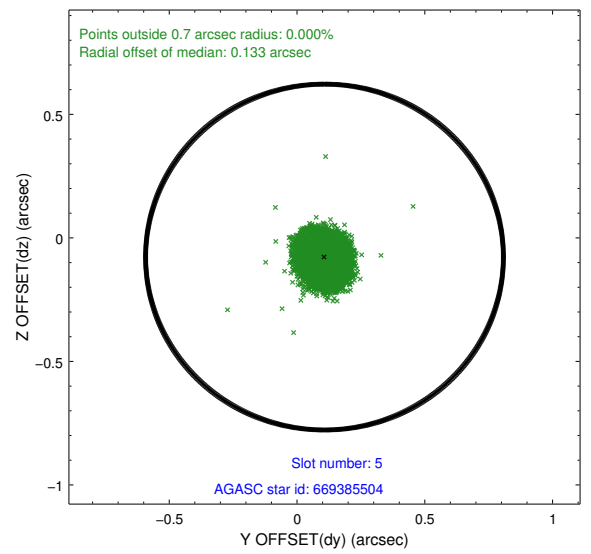
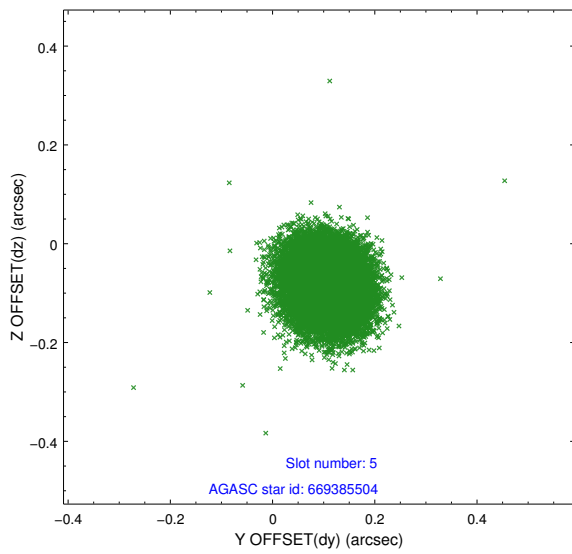
2.4.1 Slot 3



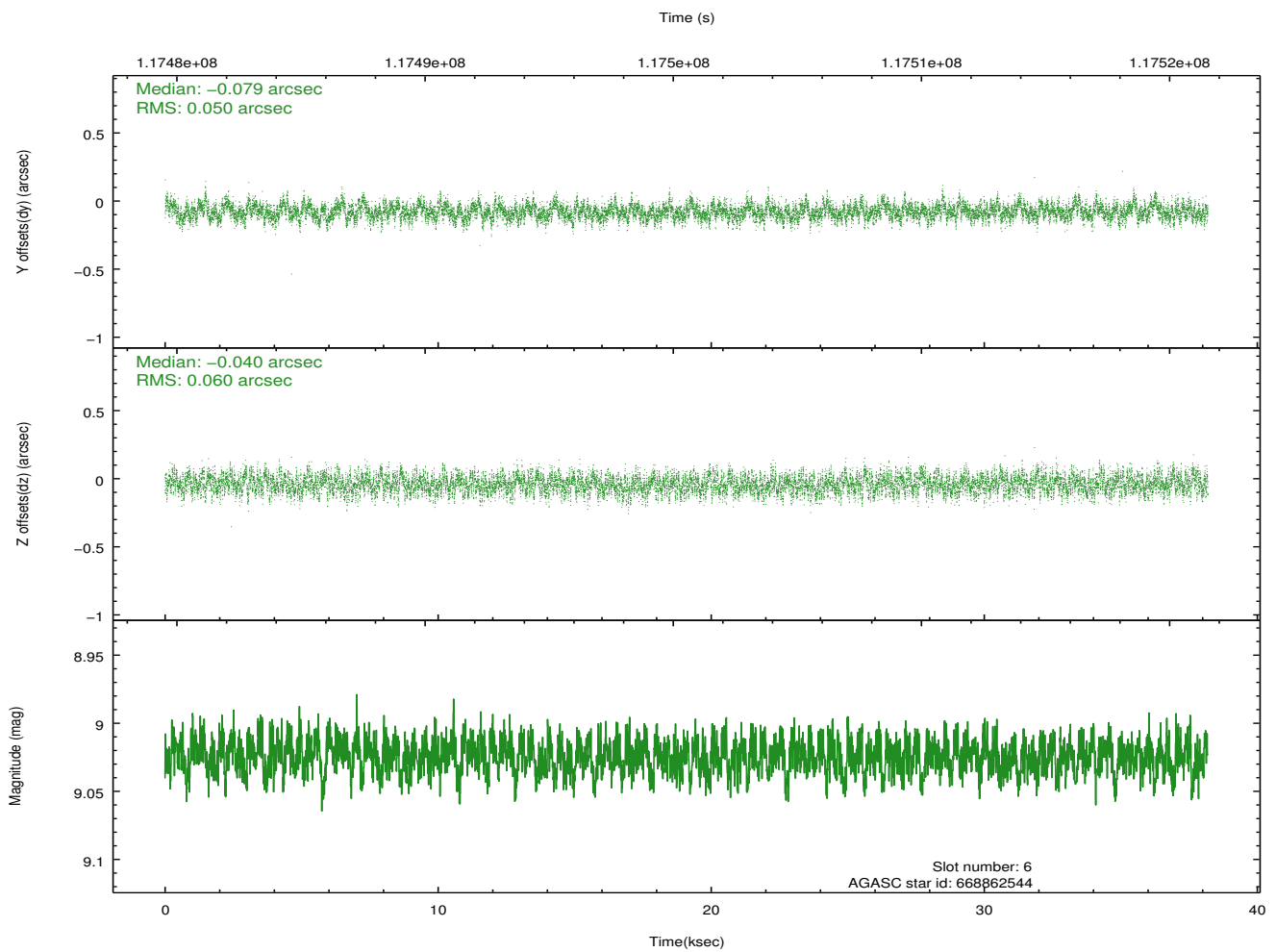
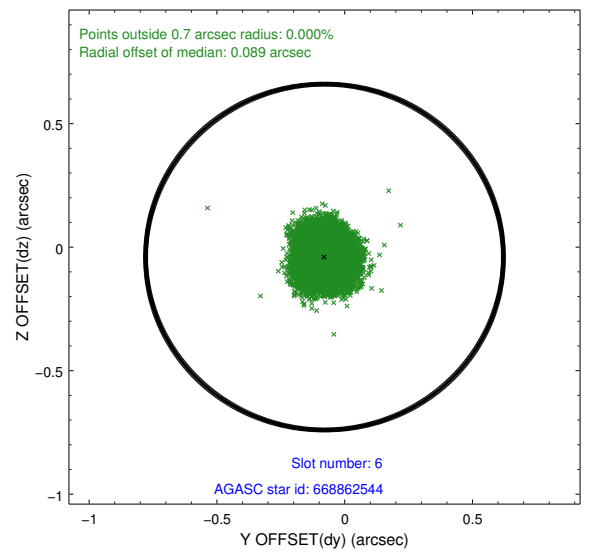
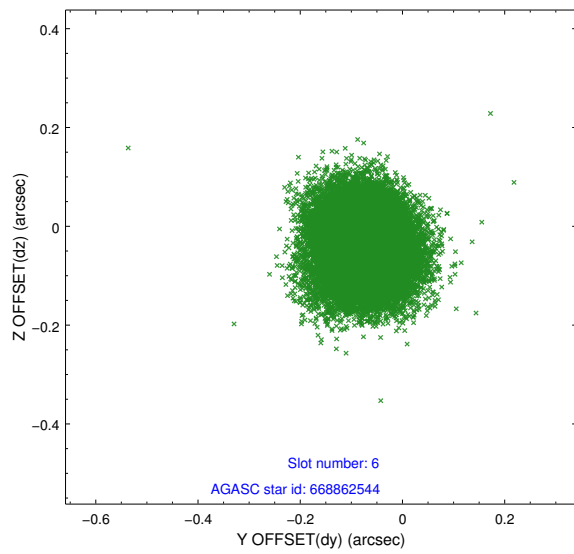
2.4.2 Slot 4



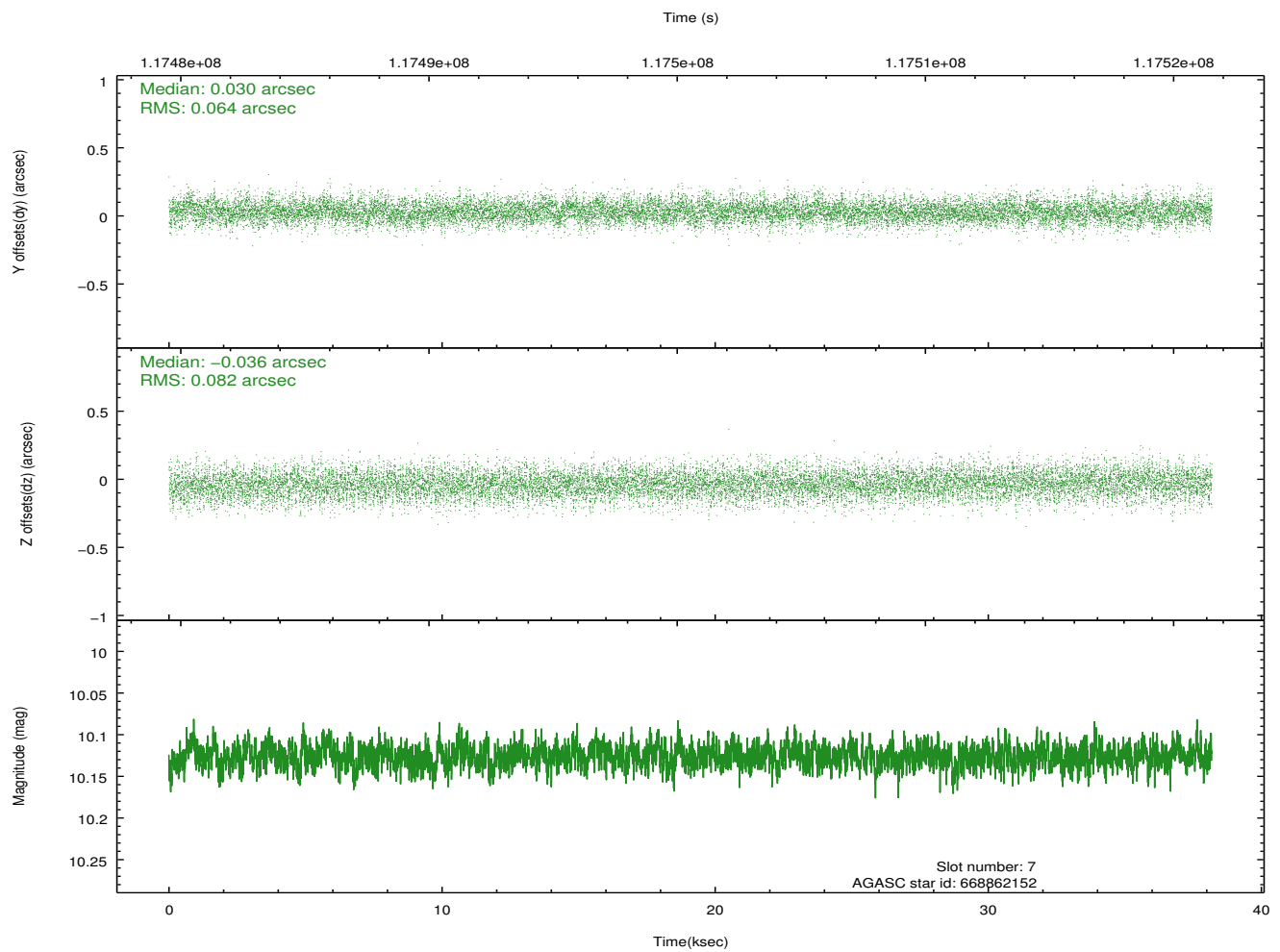
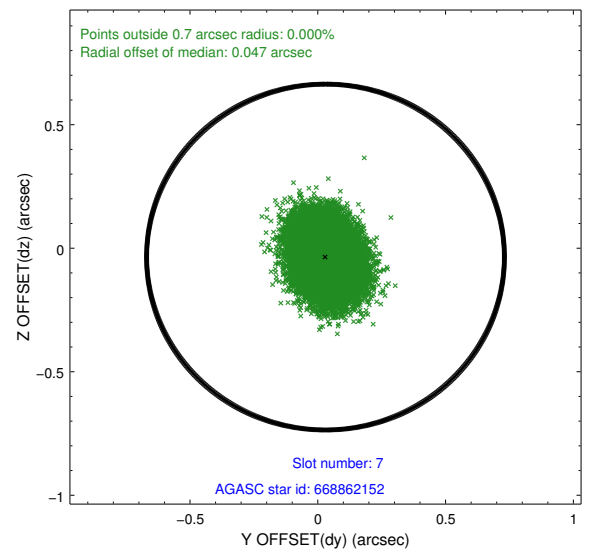
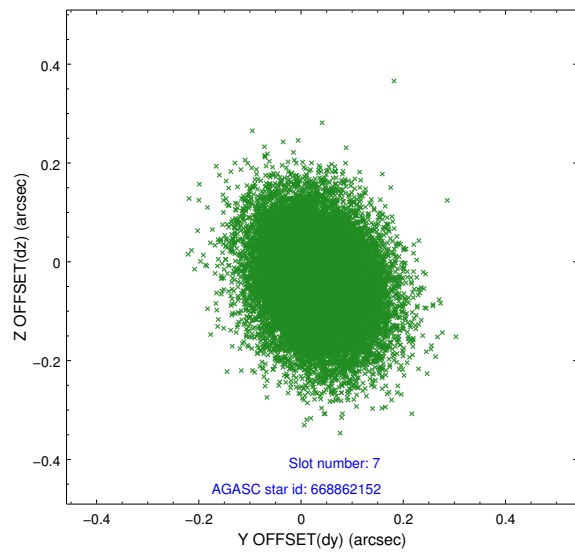
2.4.3 Slot 5



2.4.4 Slot 6

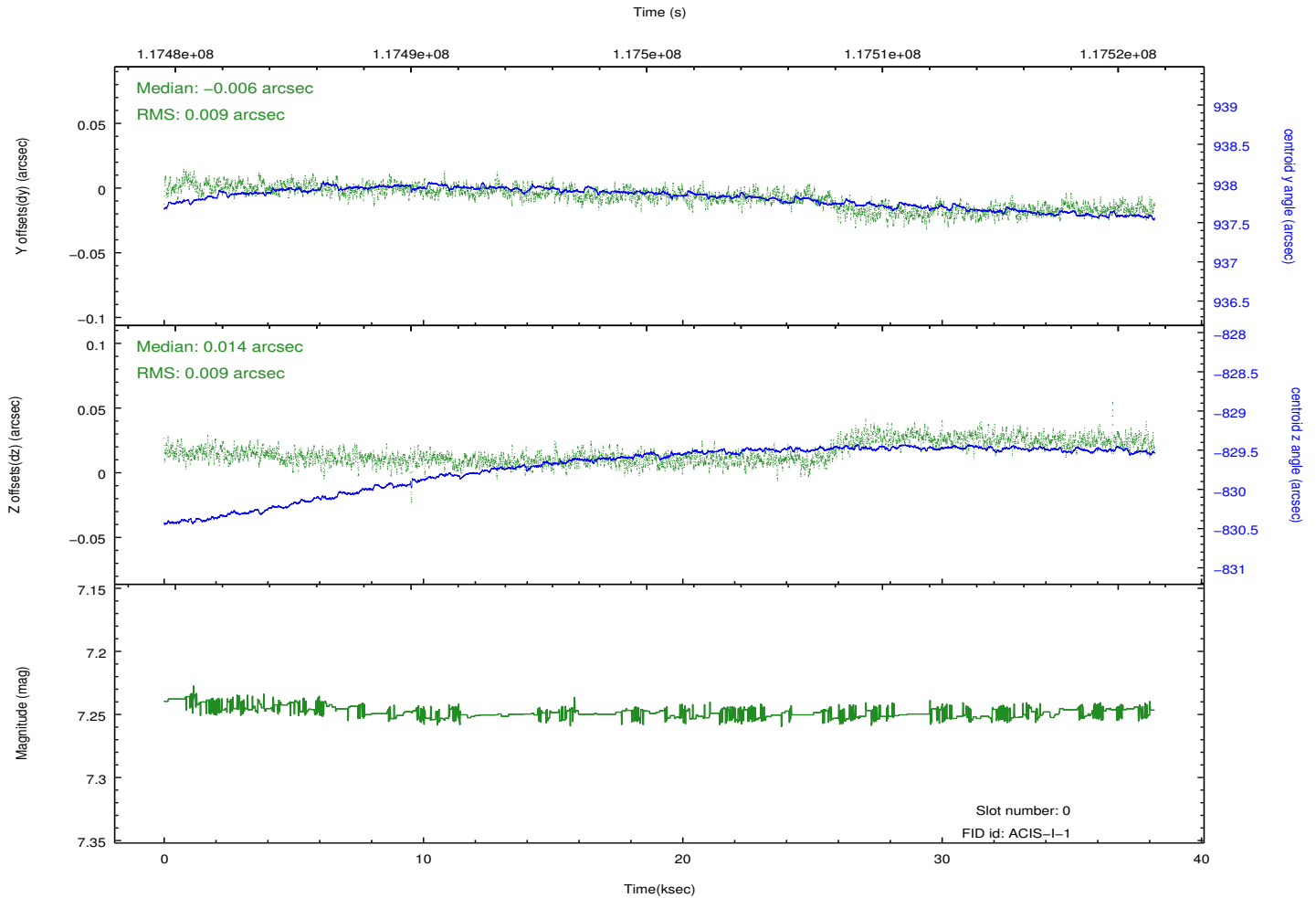
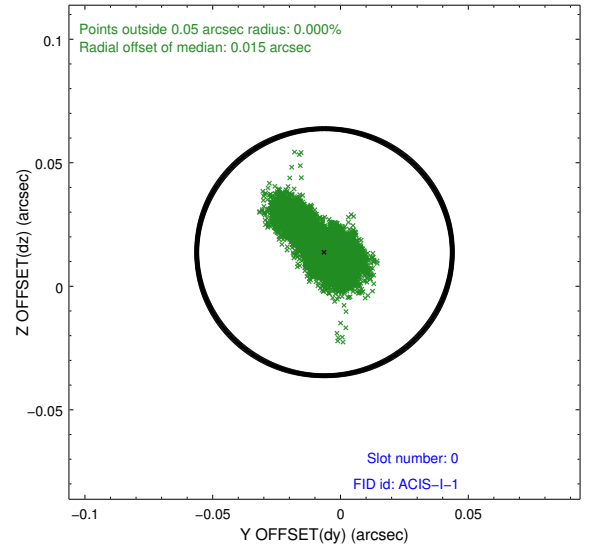
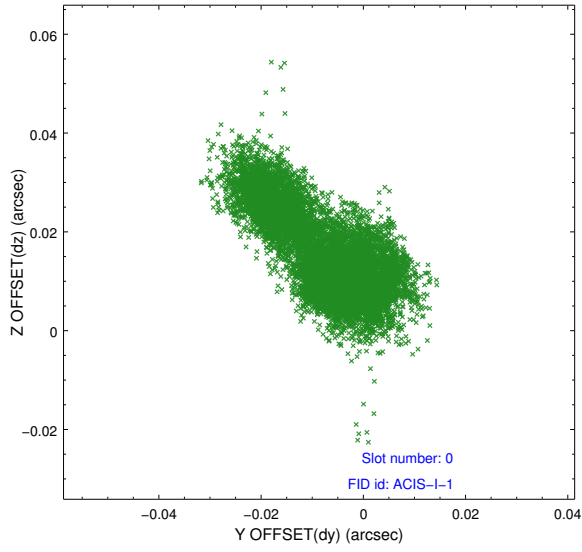


2.4.5 Slot 7

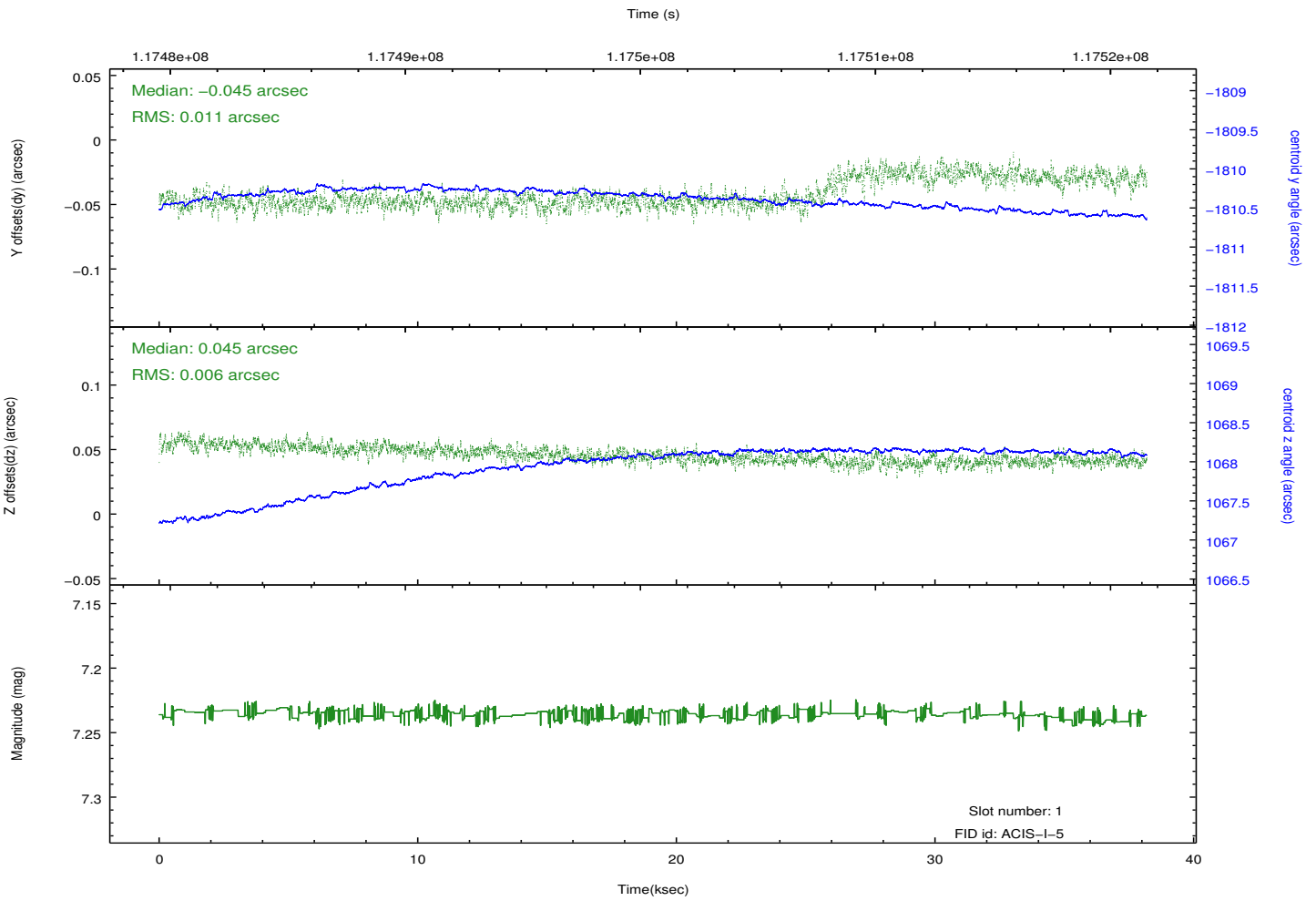
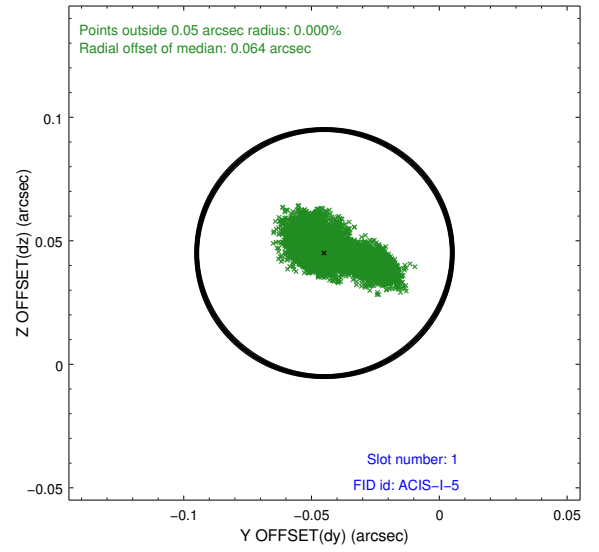
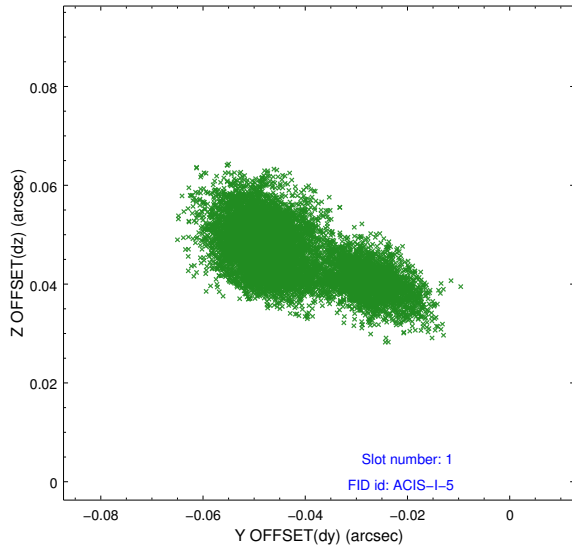


2.5 FID Slots

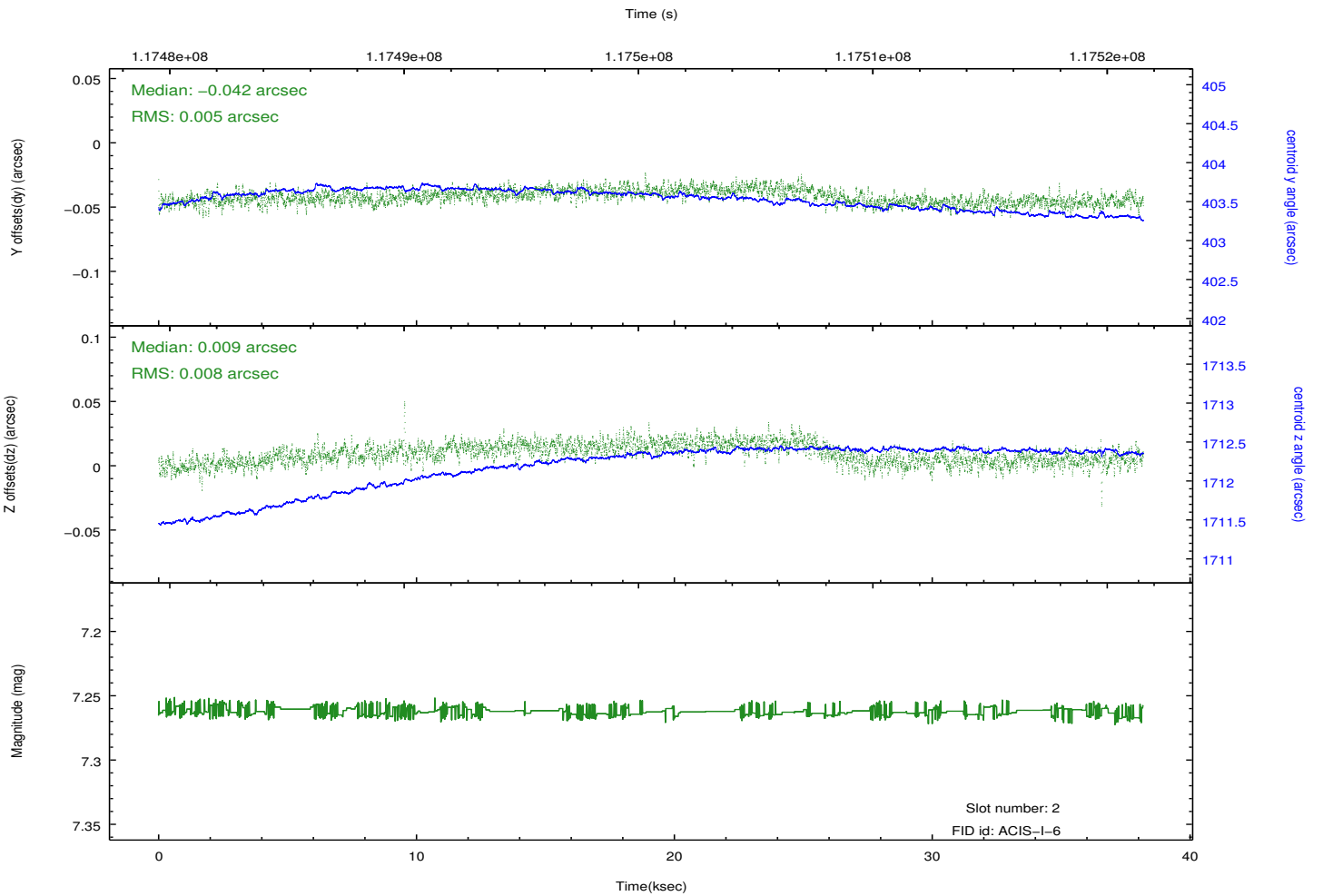
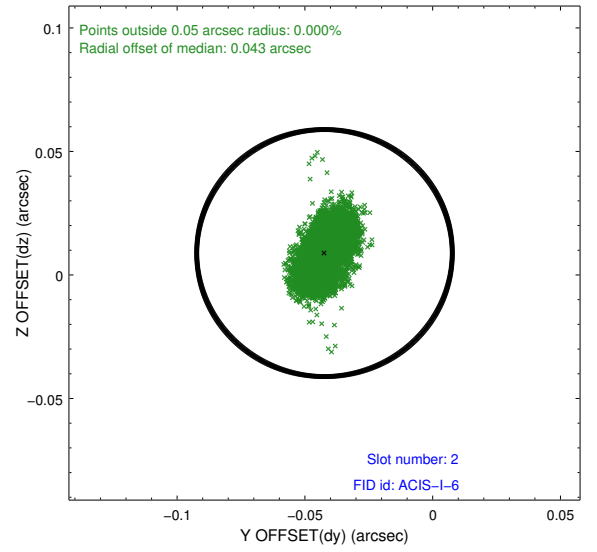
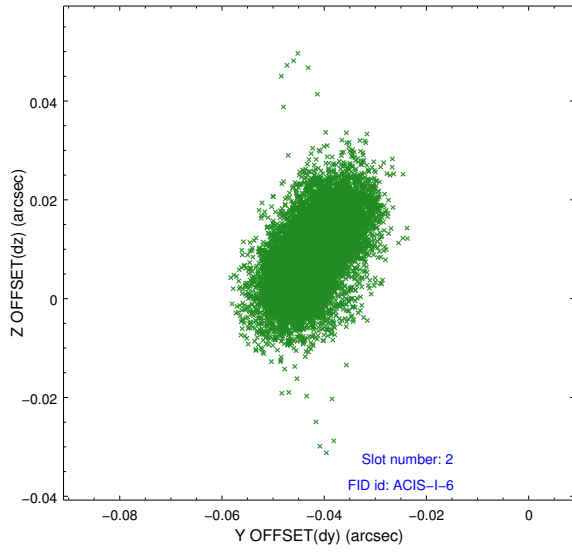
2.5.1 Slot 0



2.5.2 Slot 1



2.5.3 Slot 2



A Summary

A.1 Status

V&V Scientist	Jen Lauer
V&V Date (YYYY-MM-DD)	2012.09.27
V&V Edition	1
V&V Disposition and Status	OK
V&V Charge Time	38.18

A.2 Comments