

V&V Reference Report

L2 ASCDS Version : 8.4.5

Observation 2053 - L2 Version 3
Chandra X-Ray Center

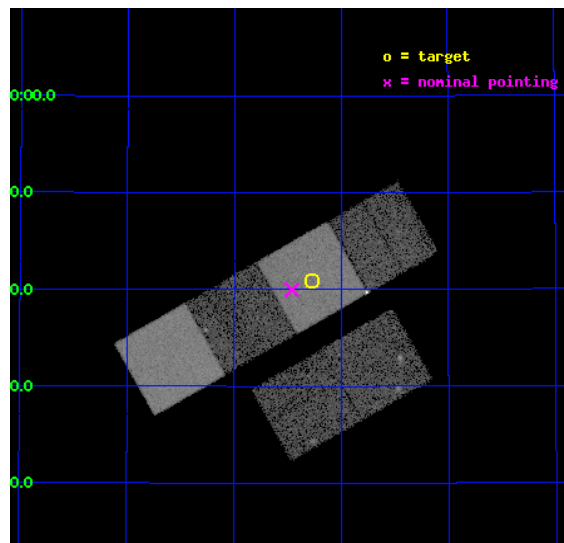
L2 Processing Date : Sep 11 2012

Contents

1	Front	2
2	OBI	3
2.1	OBI	3
2.1.1	Images	3
2.1.2	Bias	3
2.1.3	Parameters	4
2.1.4	Events	4
2.2	Compared Parameters	5
2.3	Aspect	6
2.4	Star Slots	9
2.4.1	Slot 3	9
2.4.2	Slot 4	10
2.4.3	Slot 5	11
2.4.4	Slot 6	12
2.4.5	Slot 7	13
2.5	FID Slots	14
2.5.1	Slot 0	14
2.5.2	Slot 1	15
2.5.3	Slot 2	16
A	Summary	17
A.1	Status	17
A.2	Comments	17

1 Front

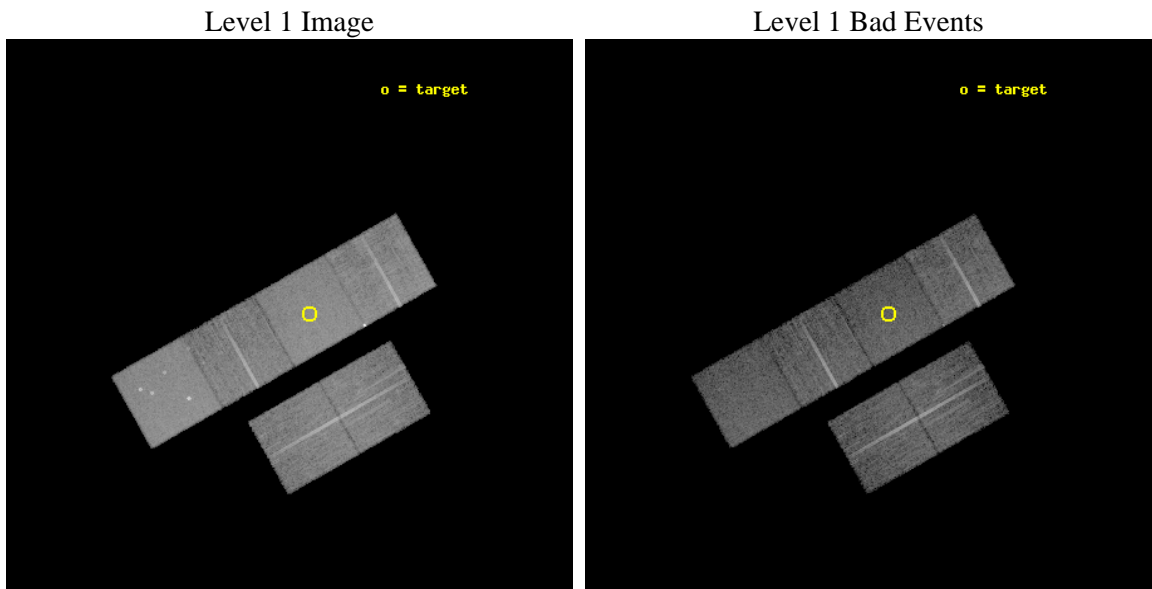
seq_num	600187	Sequence number
obs_id	2053	Observation id
title	2001: A SPACE CENSUS -- SUPERSOFT X-RAY SOURCES AND OTHER X-RAY SOURCES IN M31	Proposal title
observer	Dr. R. Di Stefano	Principal investigator
object	M31_3	Source name
dtcycle	0	
cycle	P	events from which exps? Prim/Second/Both
ra_targ	11.569583	Observer's specified target RA [deg]
dec_targ	41.681944	Observer's specified target Dec [deg]
ra_nom	11.615378469229	Nominal RA [deg]
dec_nom	41.666182912357	Nominal Dec [deg]
roll_nom	330.45710015174	Nominal Roll [deg]
revision	3	Processing version of data
ontime	13529.165604144	Sum of GTIs [s]
livetime	13357.851162979	Livetime [s]
ontime2	13522.724663824	Sum of GTIs [s]
ontime3	13529.042484149	Sum of GTIs [s]
ontime5	13529.124564141	Sum of GTIs [s]
ontime6	13525.842593834	Sum of GTIs [s]
ontime7	13529.165604144	Sum of GTIs [s]
ontime8	13525.760483921	Sum of GTIs [s]
l2events	137294	Number of level 2 events



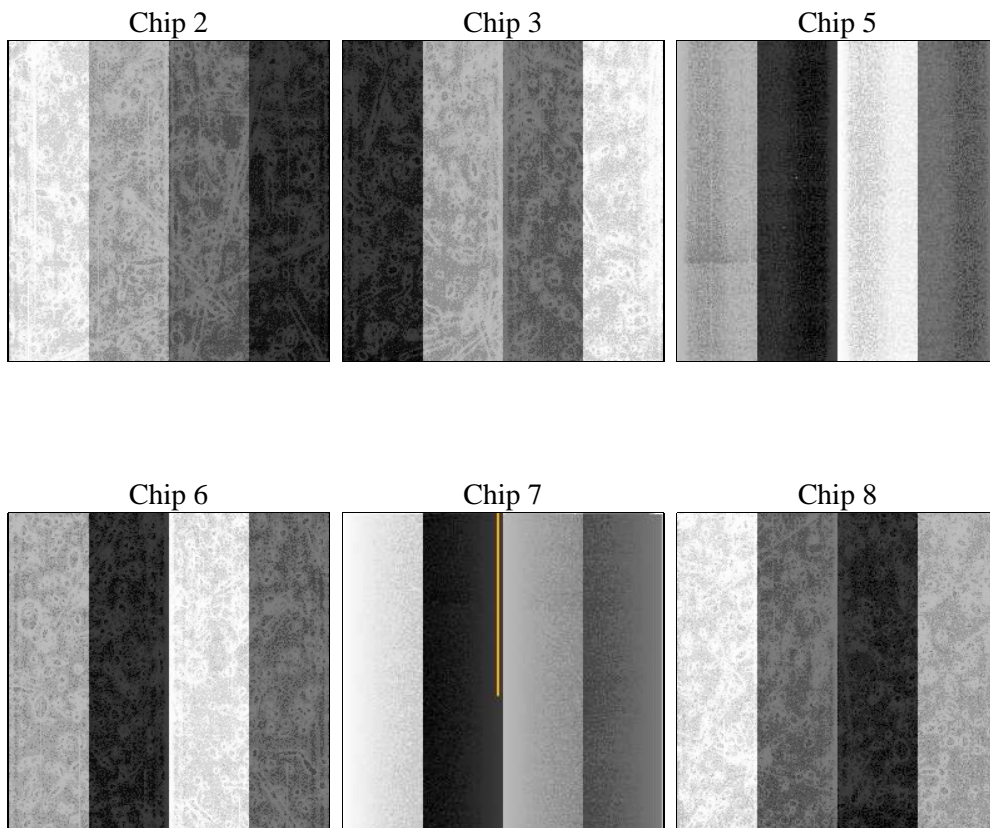
2 OBI

2.1 OBI

2.1.1 Images



2.1.2 Bias



2.1.3 Parameters

obi_num	0	Obi number	sched_exp_time	13500.000000	[s] Scheduled observation exposure time
ascdsver	8.4.5	Processing system revision	ontime	13529.165604144	Sum of GTIs [s]
caldbver	4.5.1.1	 	ontime2	13522.724663824	Sum of GTIs [s]
date	2012-09-12T00:01:58	Date and time of file creation	ontime3	13529.042484149	Sum of GTIs [s]
revision	3	Processing version of data	ontime5	13529.124564141	Sum of GTIs [s]
			ontime6	13525.842593834	Sum of GTIs [s]
			ontime7	13529.165604144	Sum of GTIs [s]
			ontime8	13525.760483921	Sum of GTIs [s]
			l1events	625371	Number of level 1 events

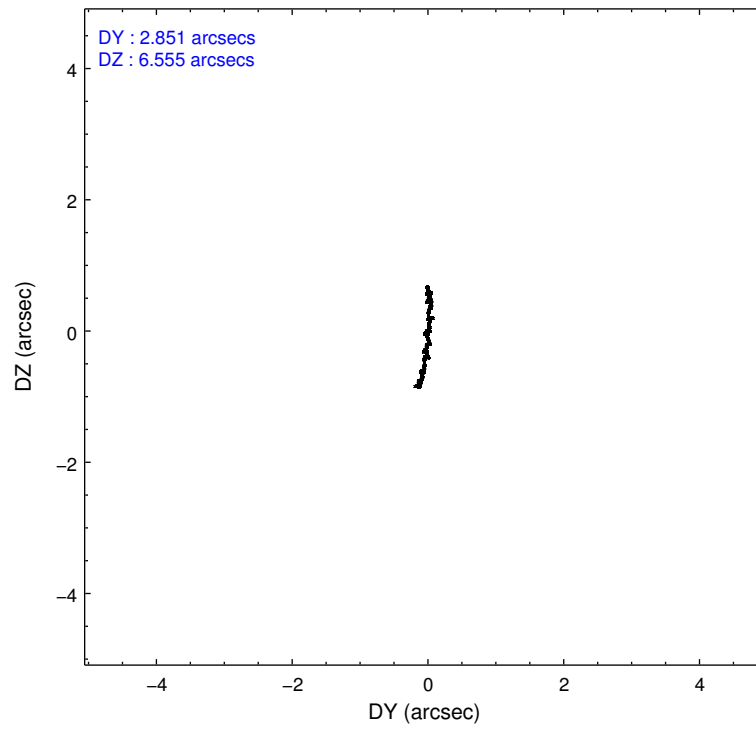
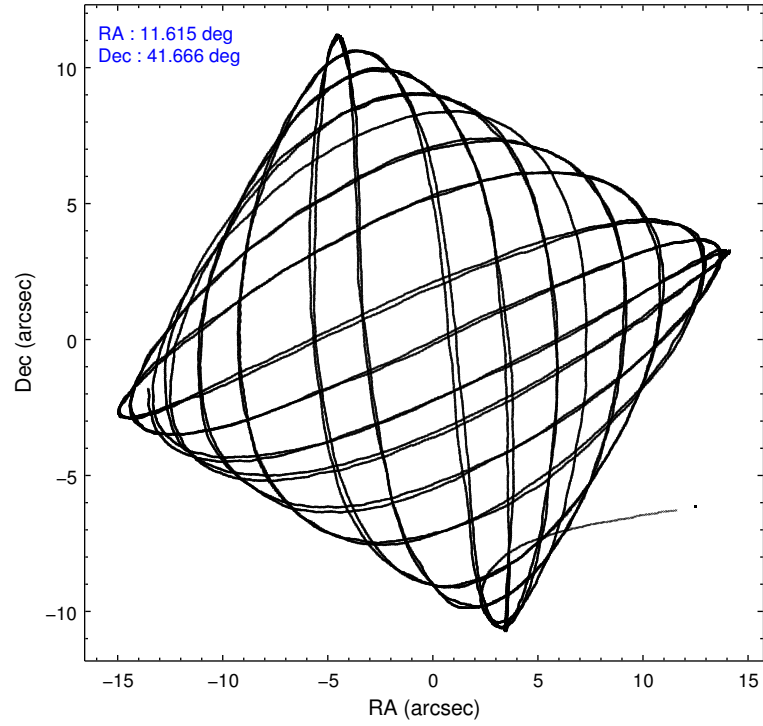
2.1.4 Events

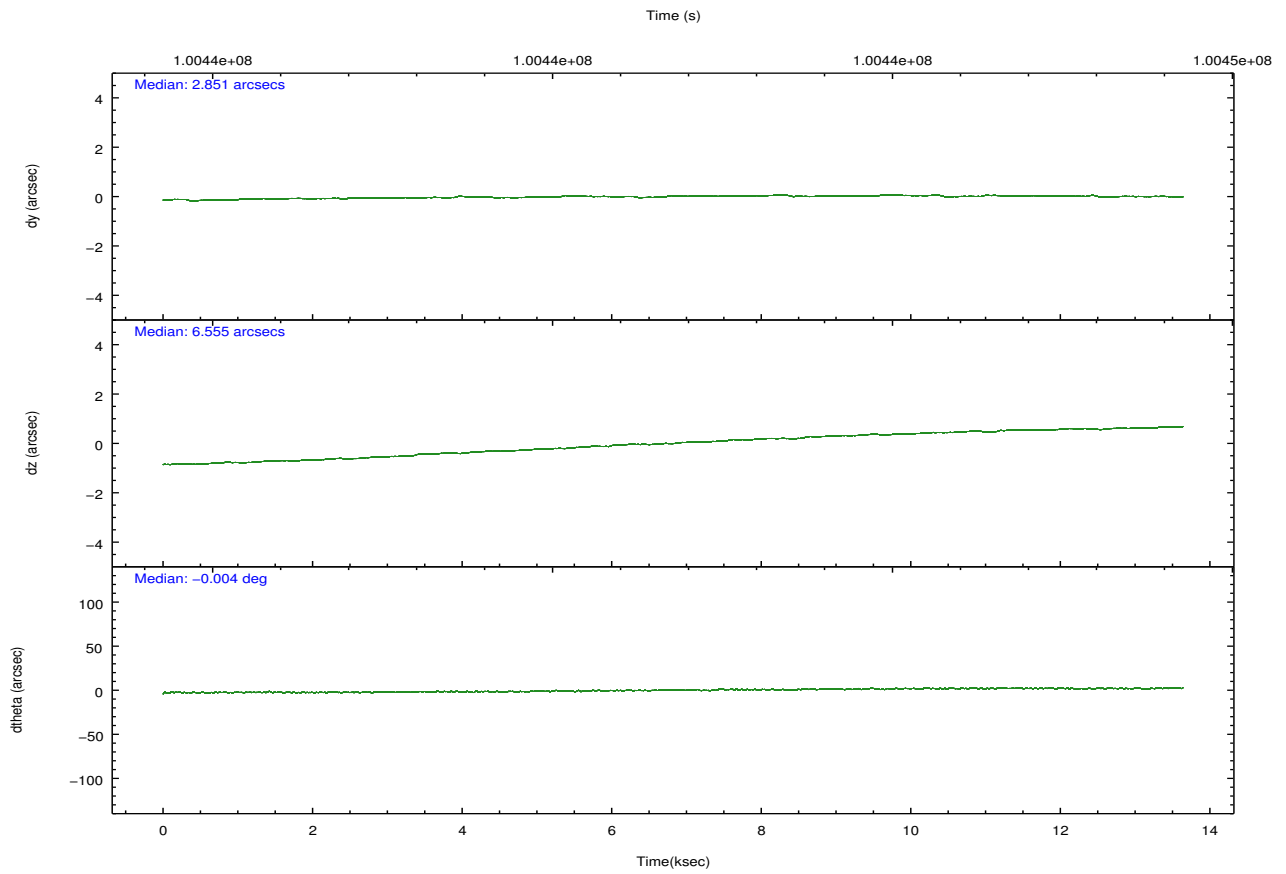
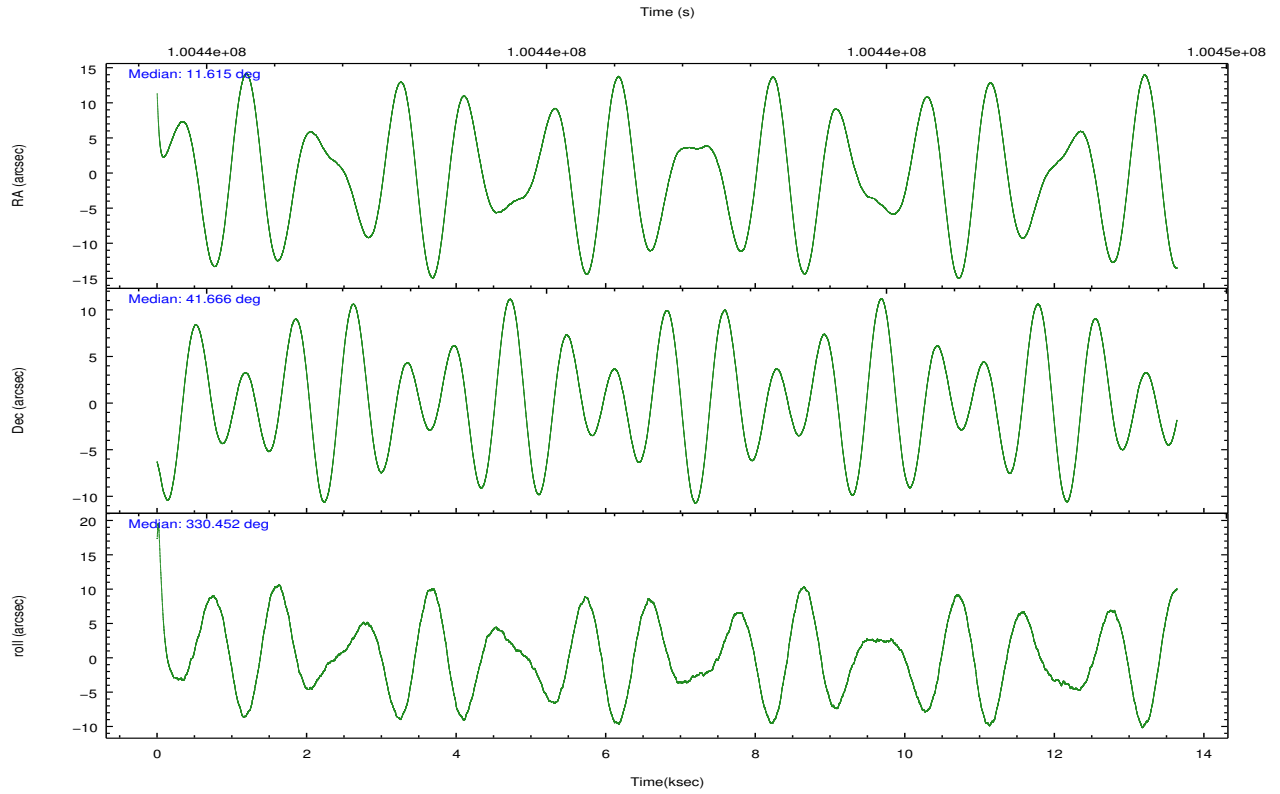
	ccd 2	ccd 3	ccd 5	ccd 6	ccd 7	ccd 8		ccd 2	ccd 3	ccd 5	ccd 6	ccd 7	ccd 8
level 1 events	90198	91853	125829	88914	115754	112823	grade 0 events	4312	4476	8366	3994	5007	8249
rejected events	80094	81615	67252	78957	66774	89533		4%	4%	6%	4%	4%	7%
rejected %	88%	88%	53%	88%	57%	79%	grade 1 events	37	42	253	46	124	95
								0%	0%	0%	0%	0%	0%
							grade 2 events	2145	1979	16152	1939	9619	4940
								2%	2%	12%	2%	8%	4%
							grade 3 events	906	1020	2417	1034	4520	2367
								1%	1%	1%	1%	3%	2%
							grade 4 events	957	964	2379	1020	4597	2255
								1%	1%	1%	1%	3%	1%
							grade 5 events	3117	3465	9294	3604	10879	4647
								3%	3%	7%	4%	9%	4%
							grade 6 events	1796	1806	29293	1972	25268	5493
								1%	1%	23%	2%	21%	4%
							grade 7 events	76928	78101	57675	75305	55740	84777
								85%	85%	45%	84%	48%	75%

2.2 Compared Parameters

Parameter	Planned	Actual	Parameter	Planned	Actual
Instrument	ACIS	ACIS	Obspar format version number	7	7
Detector	ACIS-235678	ACIS-235678	Obspar file type	PREDICTED	ACTUAL
Grating	NONE	NONE	Obspar update status	NONE	UPDATED
Data mode	FAINT	FAINT	Number of optional ACIS chips dropped	0	0
Observation mode	POINTING	POINTING	On-chip summing requested	N	N
[deg] Pointing RA	11.578795	11.61537846922885	Subarray requested	NONE	NONE
[deg] Pointing Dec	41.665752	41.66618291235681	Alternating exposures requested	N	N
[deg] Pointing Roll	330.324781	330.4571001517364	[s] Primary exposure time	0.000000	3.2
[mm] SIM focus pos	-0.684267	-0.6828225247311905			
[mm] SIM defocus	0	0.001444936568705701			
[mm] SIM translation stage pos	-190.132523	-190.1400660498719			
[mm] SIM translation stage offset	0	0.00754346686406393			
[s] Observation start time (MET)	100435091.184000	100434068.33472			
Observation start date	2001-03-08T10:37:07	2001-03-08T10:21:08			
[s] Observation end time (MET)	100448591.184000	100448736.59779			
Observation end date	2001-03-08T14:22:07	2001-03-08T14:25:36			
Read mode	TIMED	TIMED			

2.3 Aspect



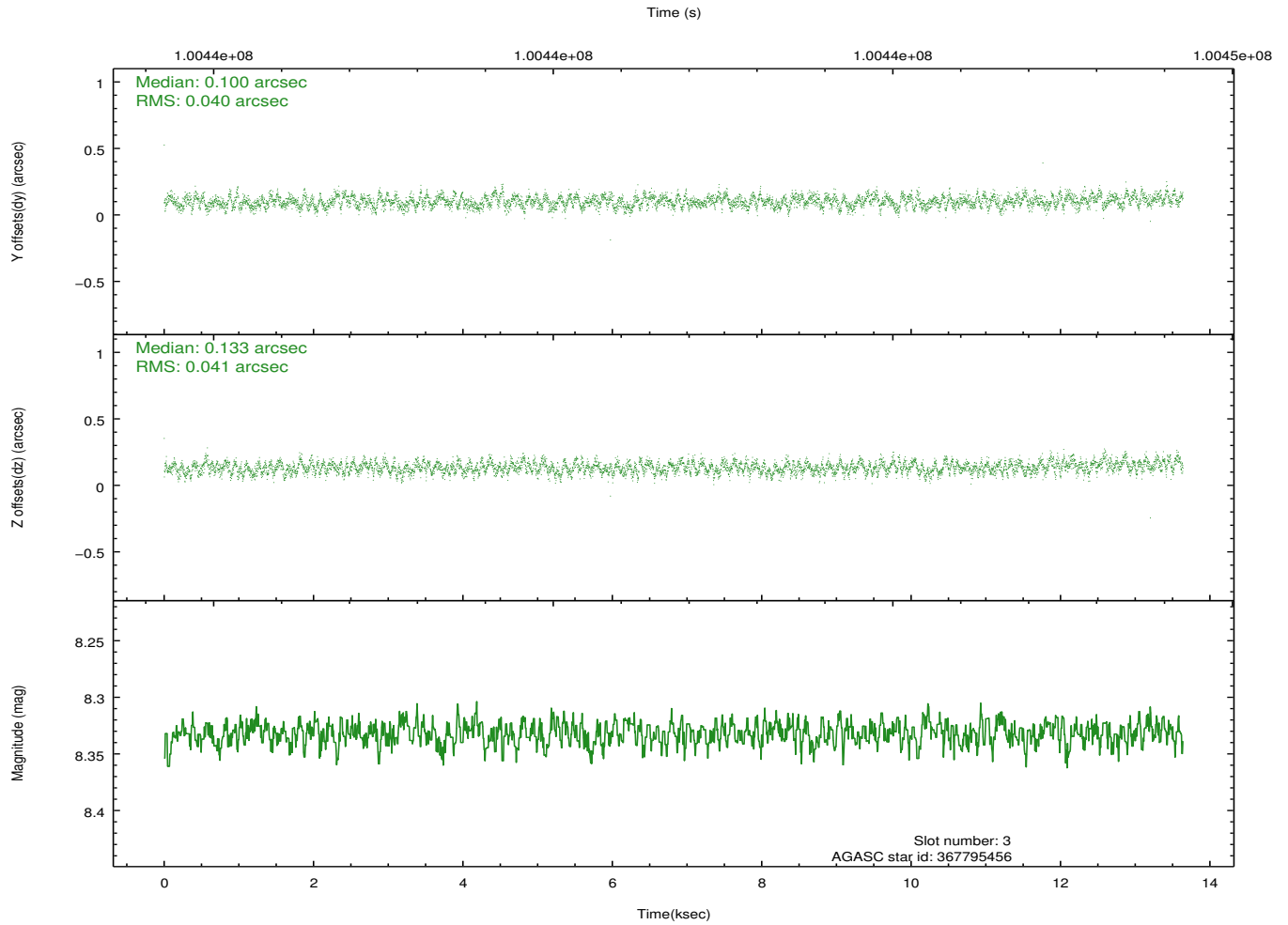
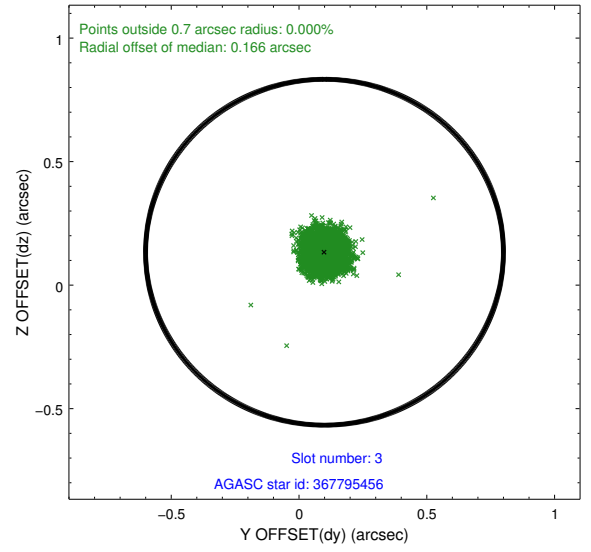
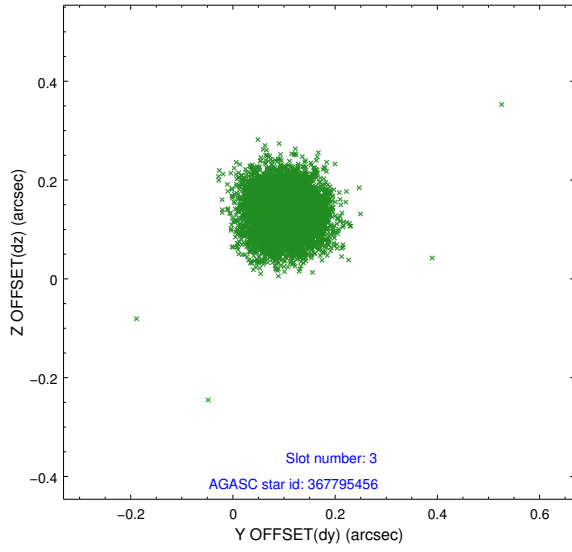


Slot Statistics

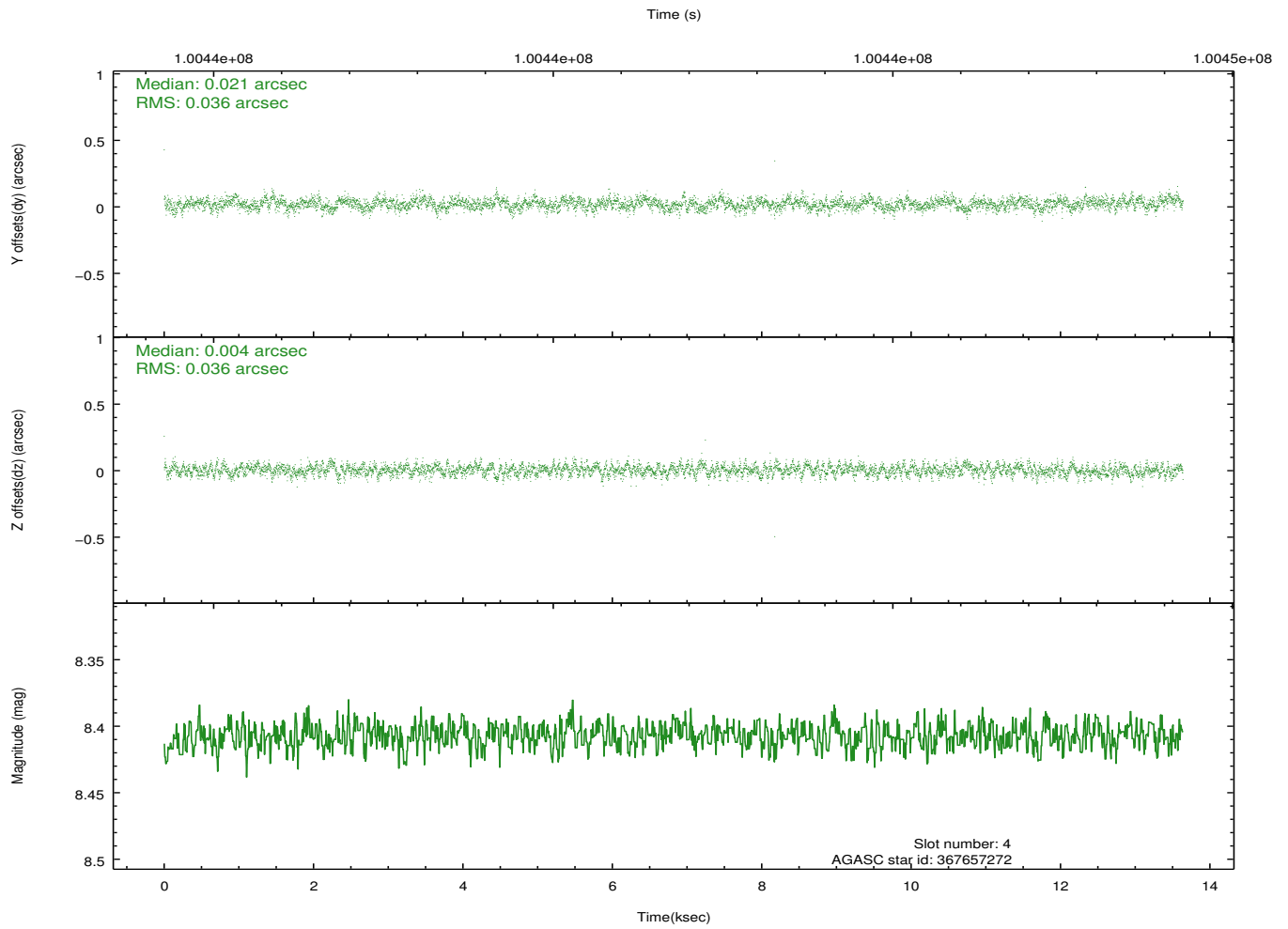
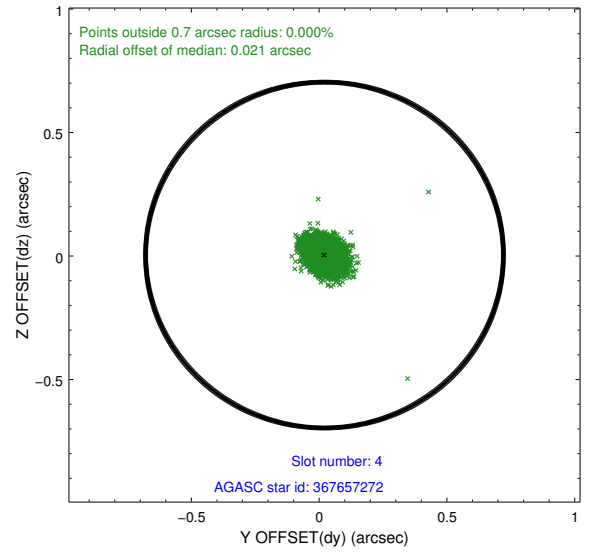
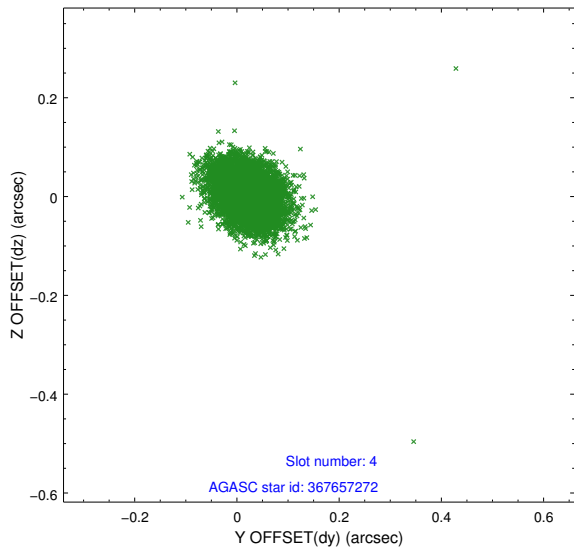
slot	status	id	mag	n_pts	med_dy	med_dz	dr1	dr2	ra	dec	mean_y	mean_z
0	FID	ACIS-S-3	7.36	3326	-0.085	-0.078	0.022	0.039	0.000000	0.000000	57.63	-1856.81
1	FID	ACIS-S-4	7.20	3326	-0.018	0.081	0.012	0.021	0.000000	0.000000	2157.88	180.48
2	FID	ACIS-S-5	7.24	3327	0.077	0.006	0.017	0.031	0.000000	0.000000	-1807.79	174.53
3	GUIDE	367795456	8.33	6651	0.100	0.133	0.061	0.097	12.718357	41.925659	2178.86	2341.72
4	GUIDE	367657272	8.41	6648	0.021	0.004	0.052	0.086	11.834471	41.298907	1254.84	-804.02
5	GUIDE	367674552	8.85	6649	-0.053	-0.100	0.073	0.114	11.016238	41.570845	-1149.18	-1043.31
6	GUIDE	367146616	8.85	6653	-0.031	-0.091	0.069	0.115	11.418645	41.190163	470.73	-1702.52
7	GUIDE	367670520	9.27	6650	-0.035	0.055	0.092	0.148	11.265516	42.371946	-1983.25	1797.03

2.4 Star Slots

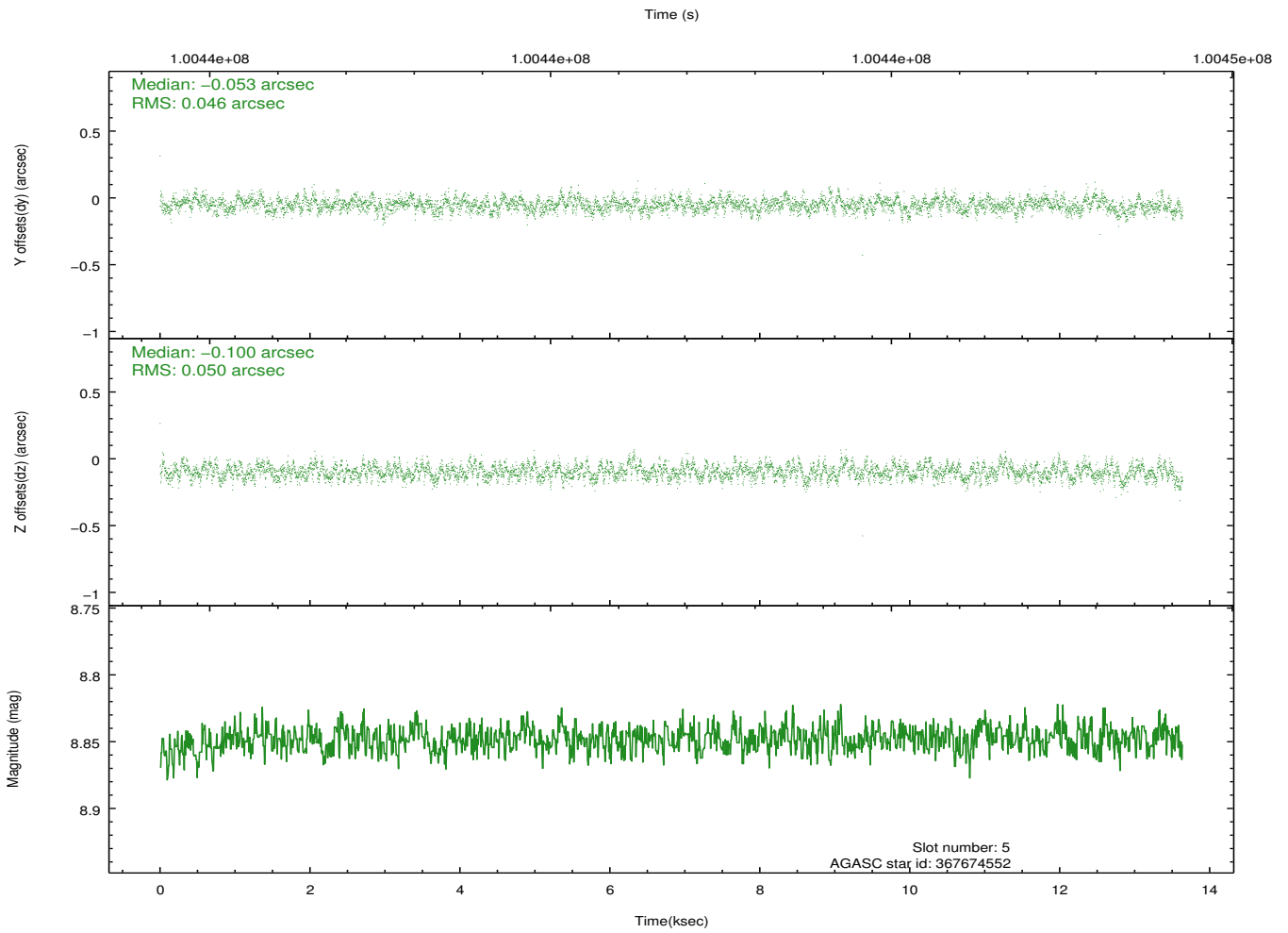
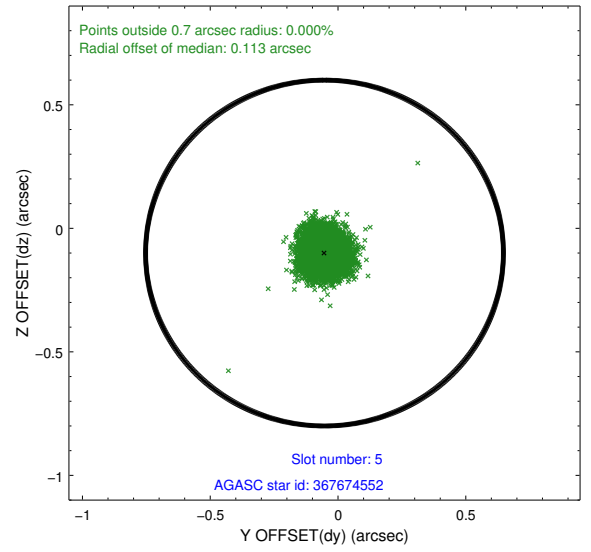
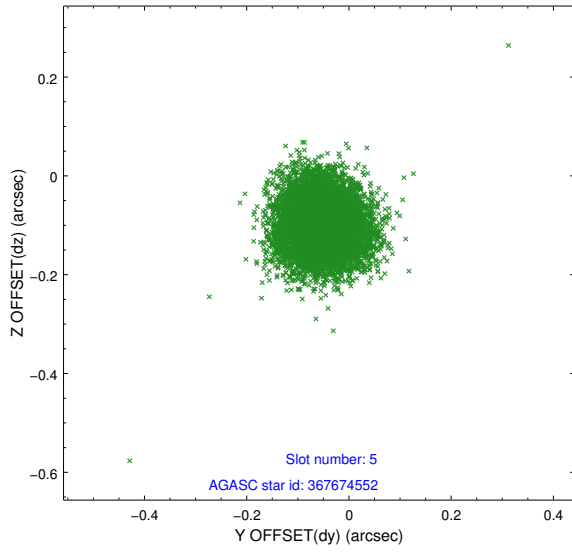
2.4.1 Slot 3



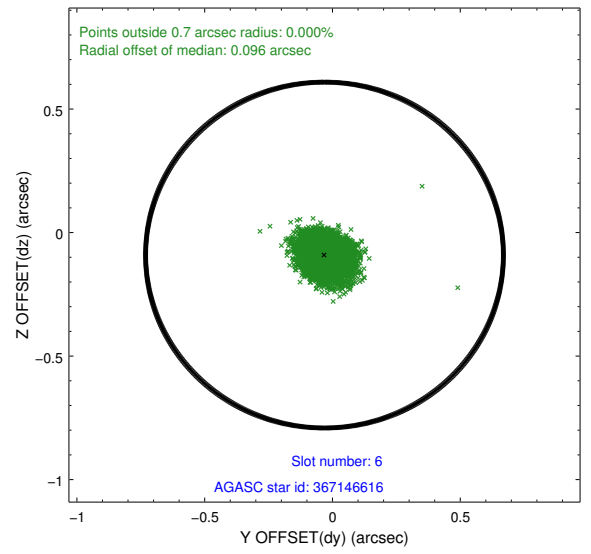
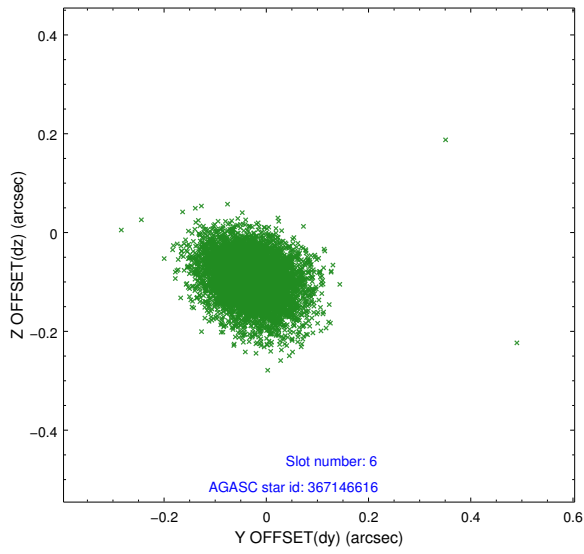
2.4.2 Slot 4



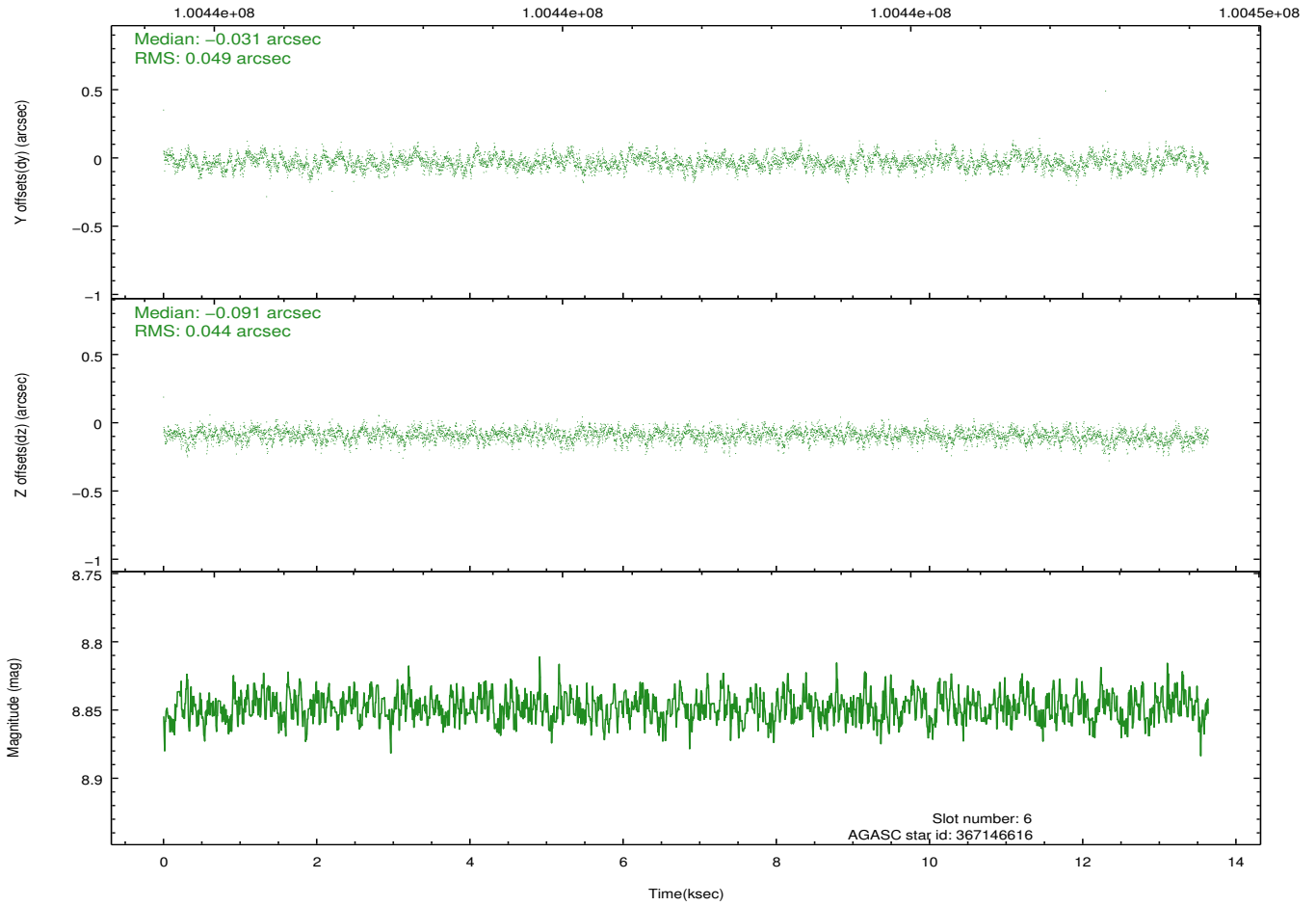
2.4.3 Slot 5



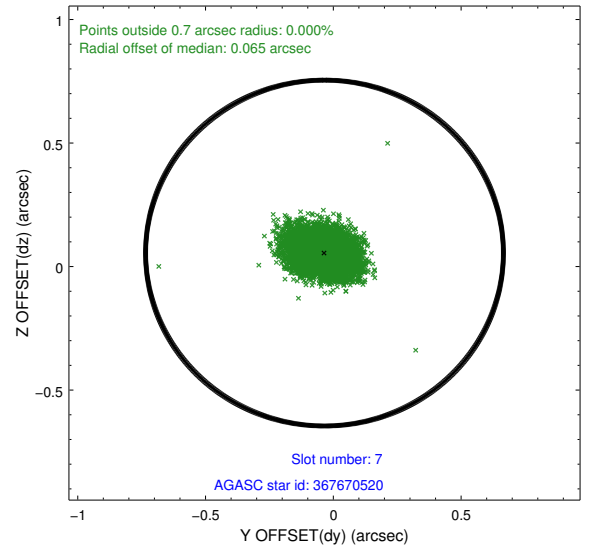
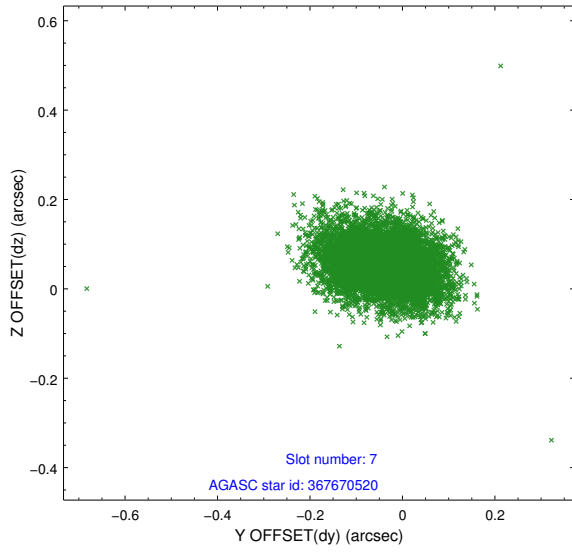
2.4.4 Slot 6



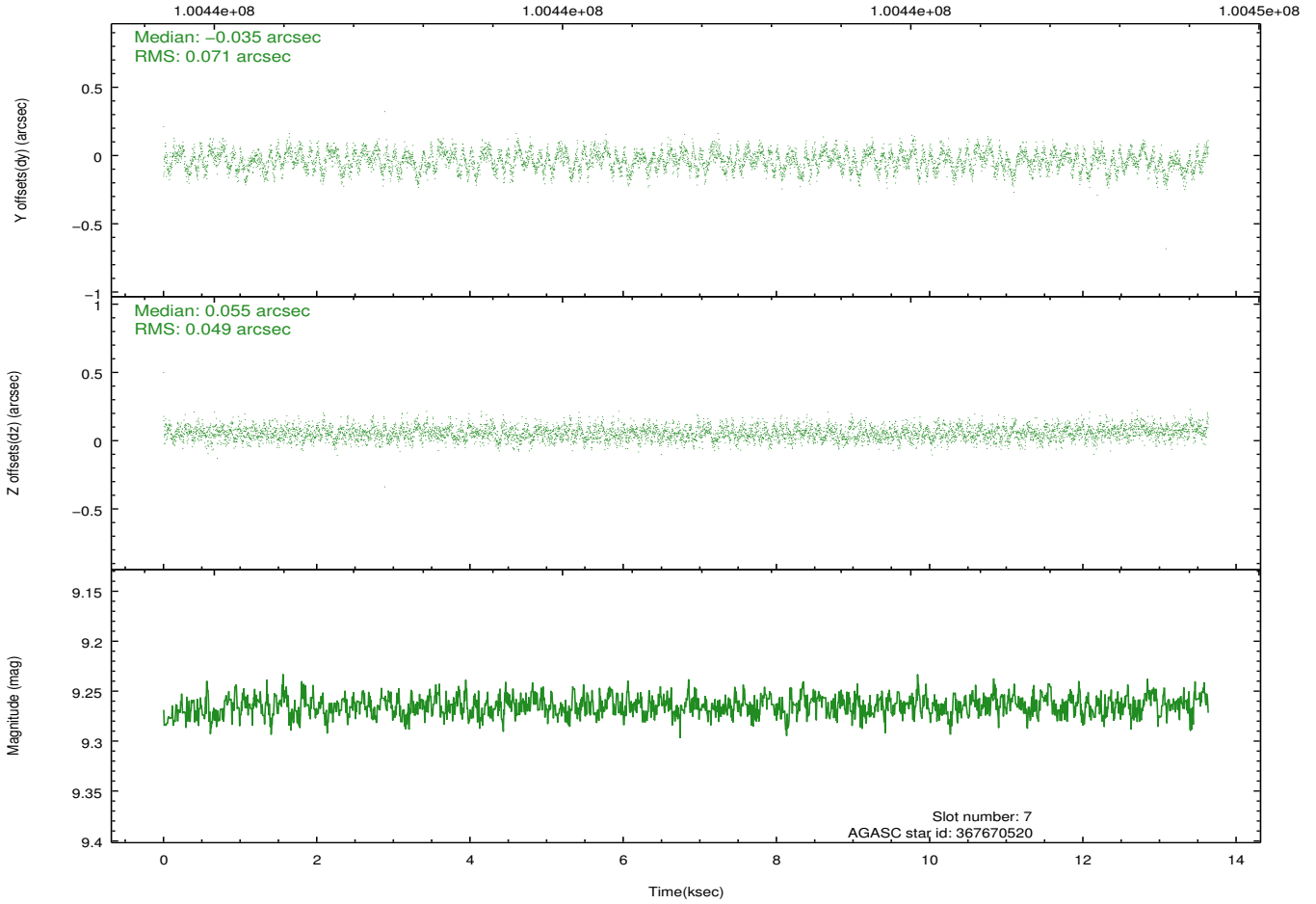
Time (s)



2.4.5 Slot 7

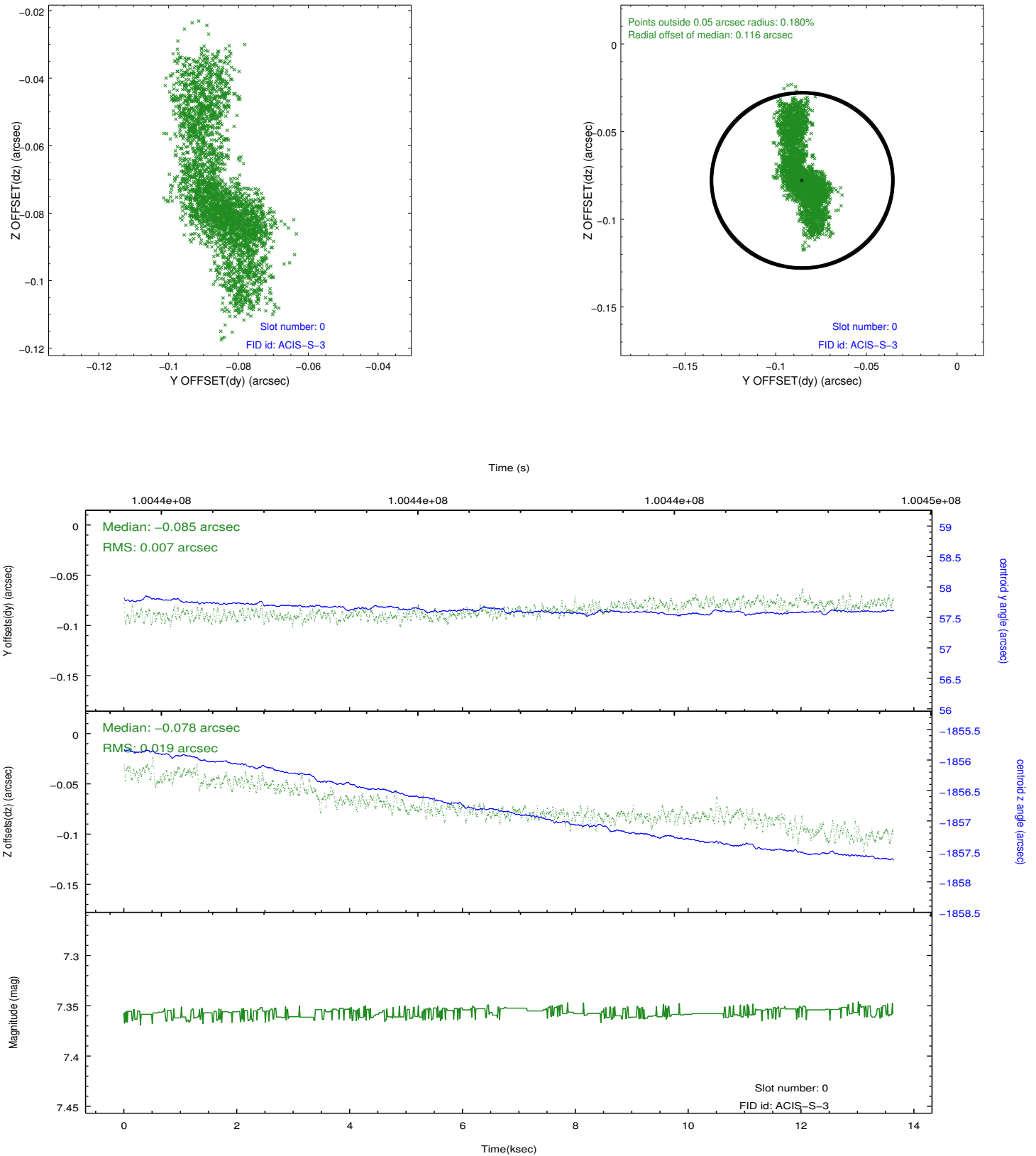


Time (s)

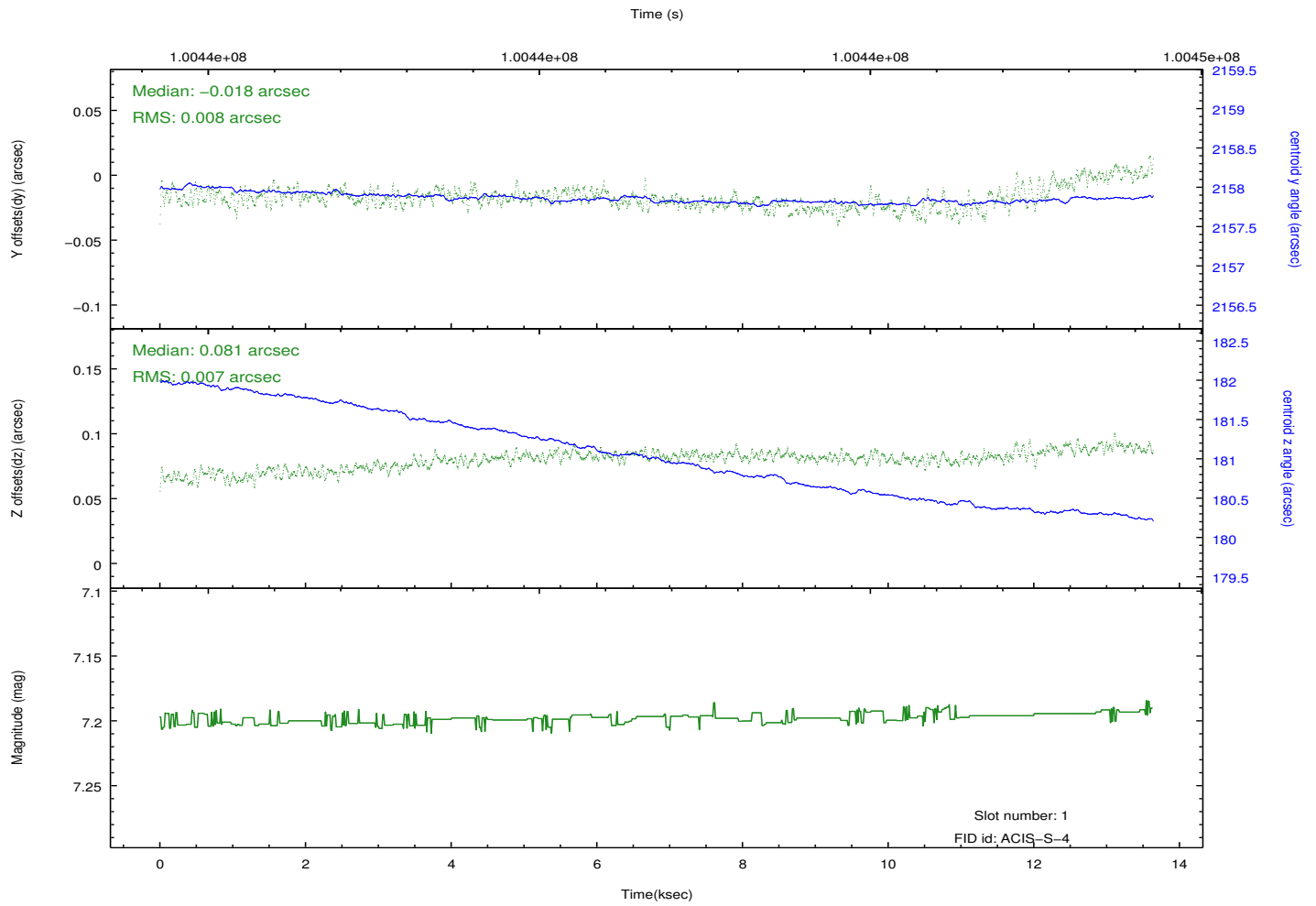
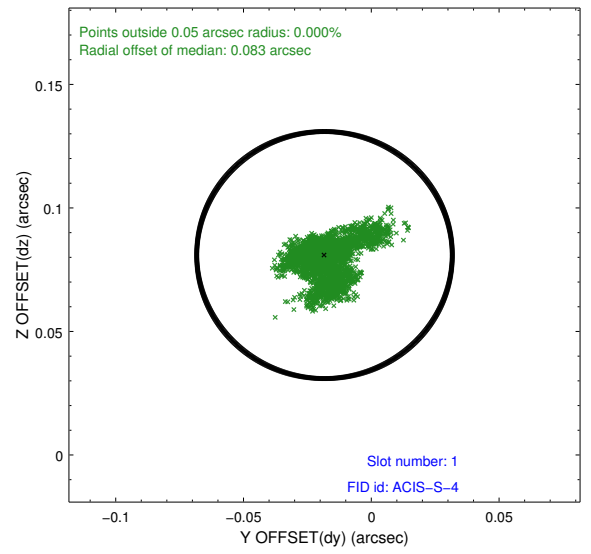
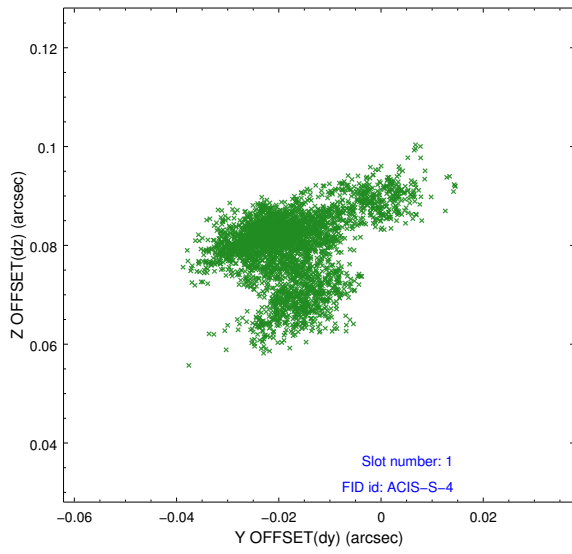


2.5 FID Slots

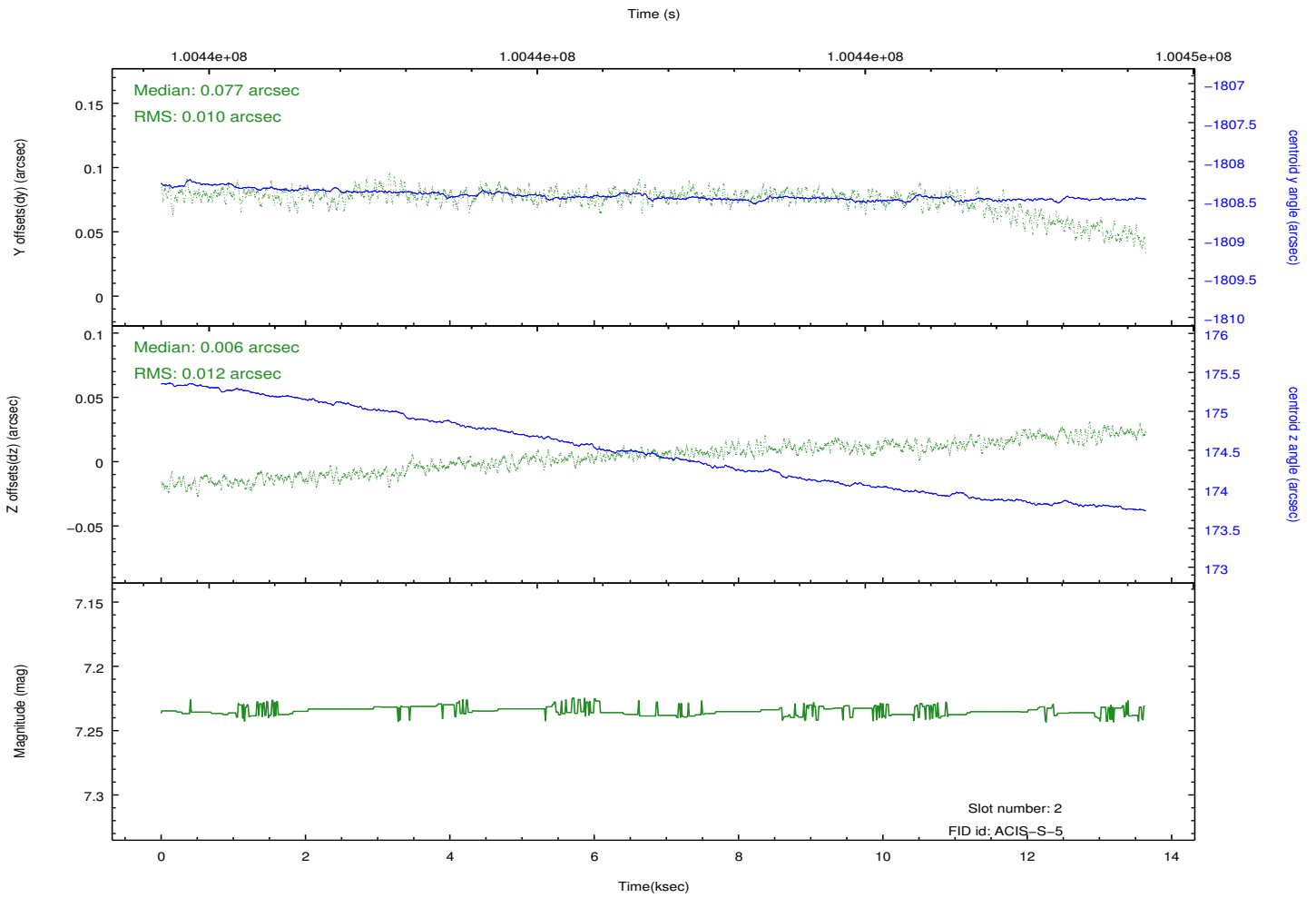
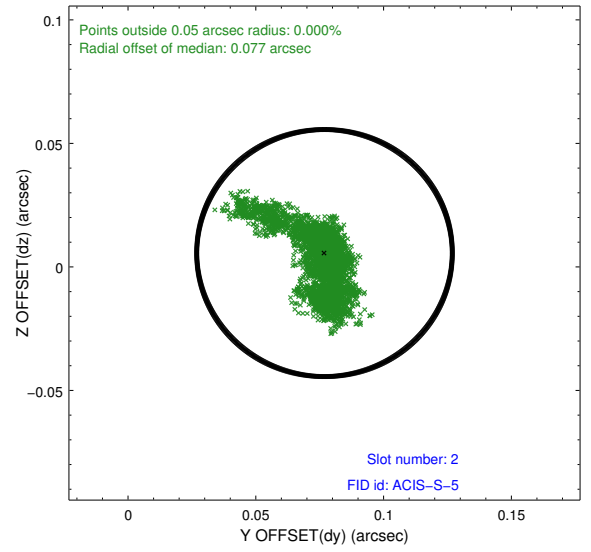
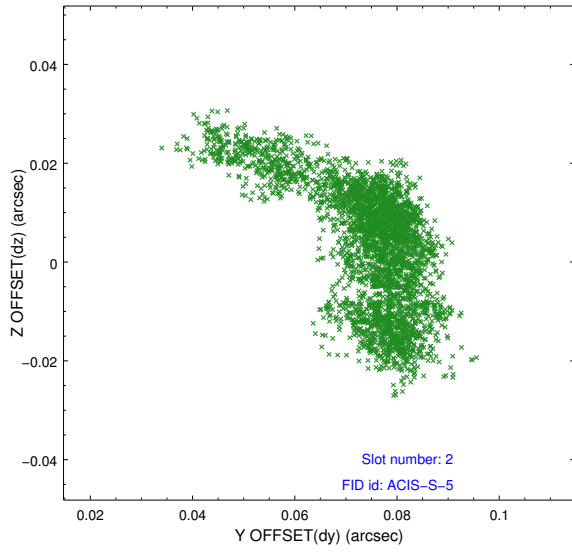
2.5.1 Slot 0



2.5.2 Slot 1



2.5.3 Slot 2



A Summary

A.1 Status

V&V Scientist	Beth Sundheim
V&V Date (YYYY-MM-DD)	2012.09.18
V&V Edition	1
V&V Disposition and Status	OK
V&V Charge Time	13.53

A.2 Comments