

# V&V Reference Report

## L2 ASCDS Version : 8.4.5

Observation 2193 - L2 Version 3  
Chandra X-Ray Center

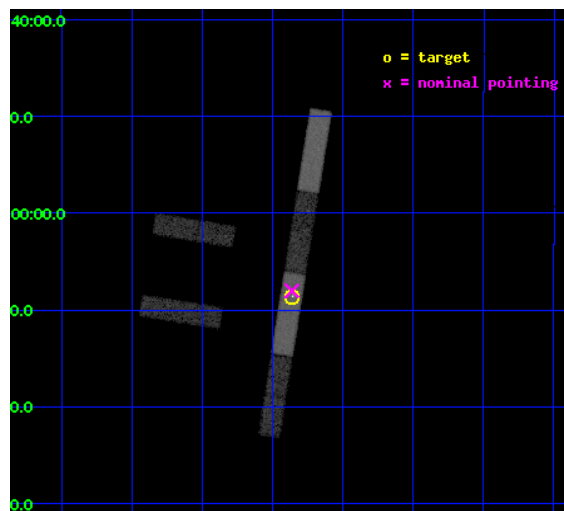
L2 Processing Date : Oct 4 2012

## Contents

<b>1</b>	<b>Front</b>	<b>2</b>
<b>2</b>	<b>OBI</b>	<b>3</b>
2.1	OBI . . . . .	3
2.1.1	Images . . . . .	3
2.1.2	Bias . . . . .	3
2.1.3	Parameters . . . . .	4
2.1.4	Events . . . . .	4
2.2	Compared Parameters . . . . .	5
2.3	Aspect . . . . .	6
2.4	Star Slots . . . . .	9
2.4.1	Slot 3 . . . . .	9
2.4.2	Slot 4 . . . . .	10
2.4.3	Slot 5 . . . . .	11
2.4.4	Slot 6 . . . . .	12
2.4.5	Slot 7 . . . . .	13
2.5	FID Slots . . . . .	14
2.5.1	Slot 0 . . . . .	14
2.5.2	Slot 1 . . . . .	15
2.5.3	Slot 2 . . . . .	16
<b>A</b>	<b>Summary</b>	<b>17</b>
A.1	Status . . . . .	17
A.2	Comments . . . . .	17

# 1 Front

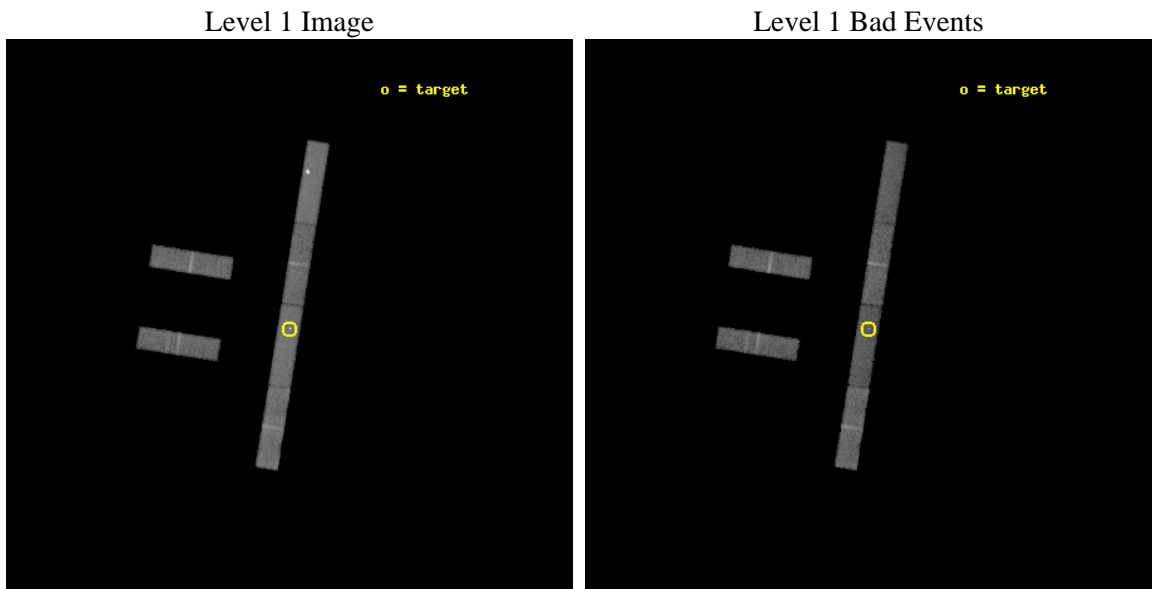
seq_num	700383	Sequence number
obs_id	2193	Observation id
title	THE X-RAY EMISSION OF COMPOSITE GALAXIES	Proposal title
observer	Dr Andreas Zezas	Principal investigator
object	IRAS20051-1117	Source name
dtycycle	0	&#160
cycle	P	events from which exps? Prim/Second/Both
ra_targ	301.965417	Observer's specified target RA [deg]
dec_targ	-11.143611	Observer's specified target Dec [deg]
ra_nom	301.96561757011	Nominal RA [deg]
dec_nom	-11.133910549636	Nominal Dec [deg]
roll_nom	99.147695828542	Nominal Roll [deg]
revision	3	Processing version of data
ontime	20887.899886817	Sum of GTIs [s]
livetime	20136.620868242	Livetime [s]
ontime2	20887.899886817	Sum of GTIs [s]
ontime3	20887.899886817	Sum of GTIs [s]
ontime5	20887.899886817	Sum of GTIs [s]
ontime6	20887.899886817	Sum of GTIs [s]
ontime7	20887.899886817	Sum of GTIs [s]
ontime8	20887.899886817	Sum of GTIs [s]
l2events	77320	Number of level 2 events



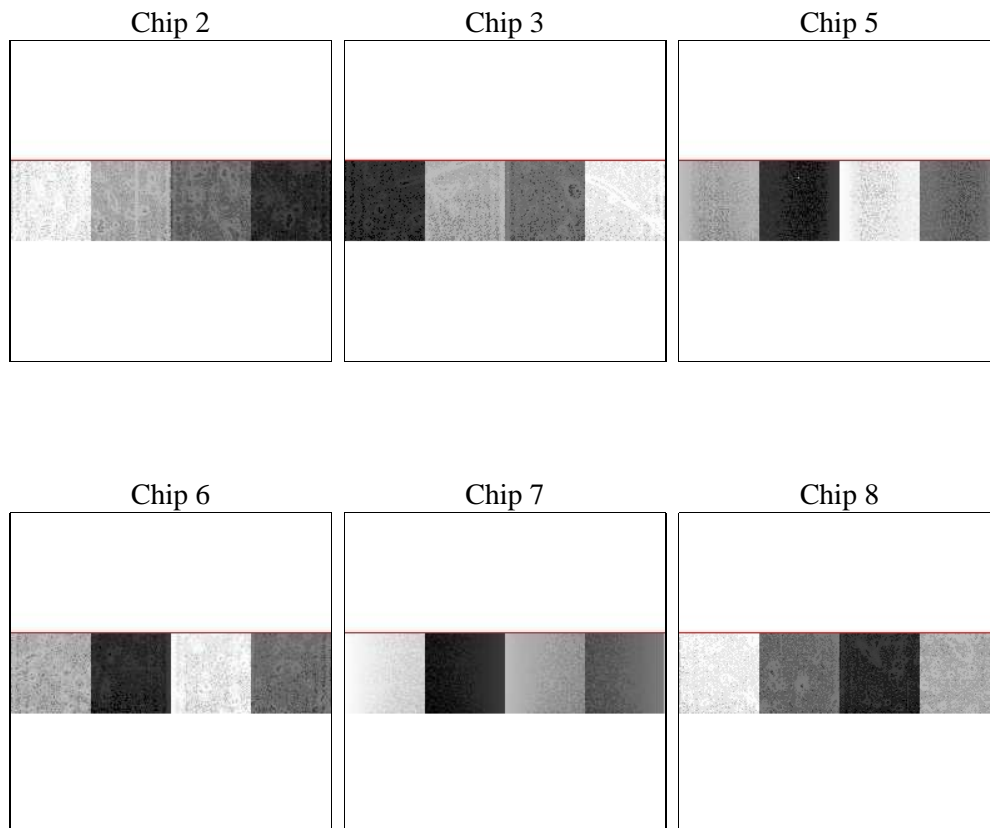
## 2 OBI

### 2.1 OBI

#### 2.1.1 Images



#### 2.1.2 Bias



### 2.1.3 Parameters

obi_num	2	Obi number	sched_exp_time	20500.000000	[s] Scheduled observation exposure time
ascdsver	8.4.5	Processing system revision	ontime	20887.899886817	Sum of GTIs [s]
caldbver	4.5.2	&#160	ontime2	20887.899886817	Sum of GTIs [s]
date	2012-10-04T16:32:45	Date and time of file creation	ontime3	20887.899886817	Sum of GTIs [s]
revision	3	Processing version of data	ontime5	20887.899886817	Sum of GTIs [s]
			ontime6	20887.899886817	Sum of GTIs [s]
			ontime7	20887.899886817	Sum of GTIs [s]
			ontime8	20887.899886817	Sum of GTIs [s]
			l1events	311192	Number of level 1 events

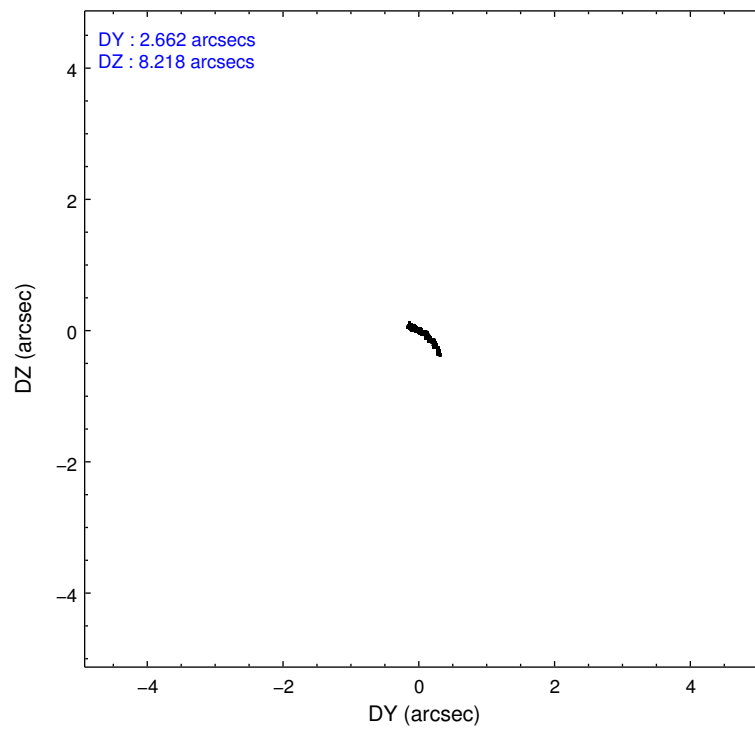
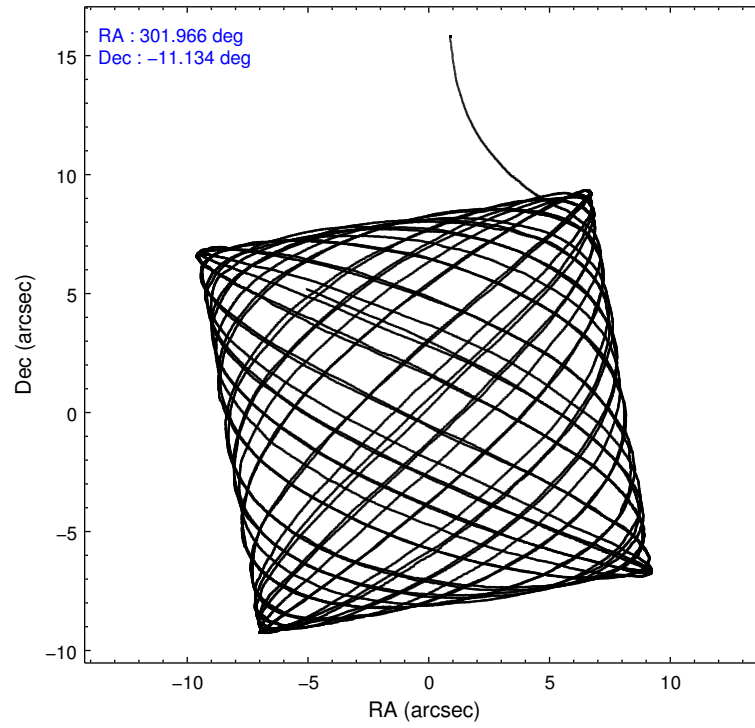
### 2.1.4 Events

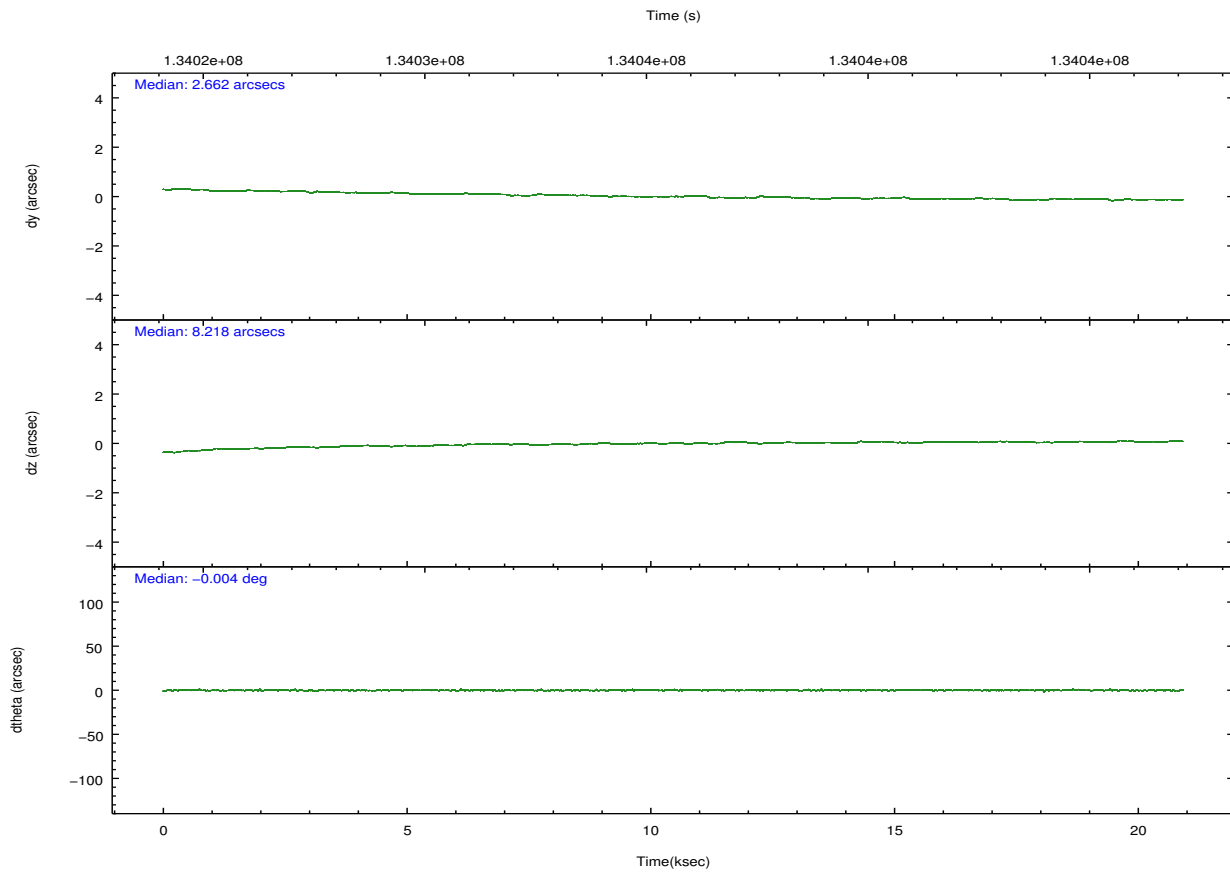
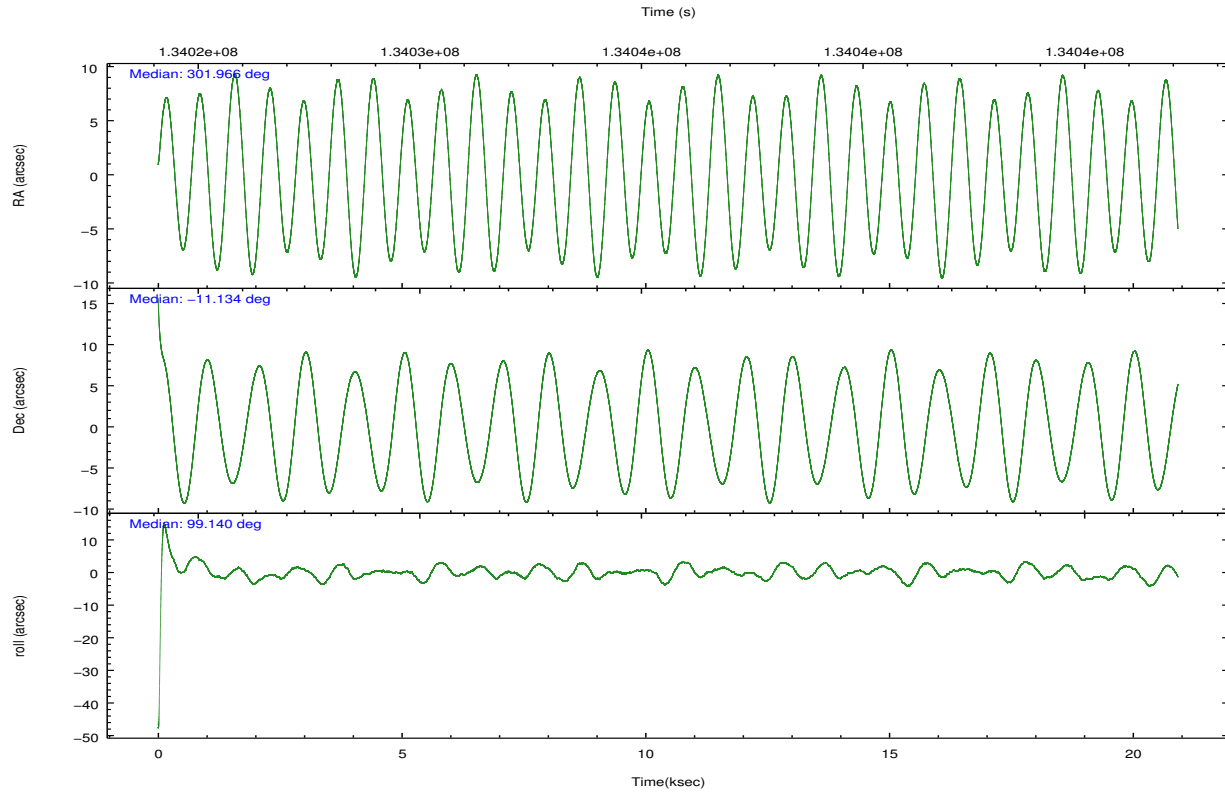
	ccd 2	ccd 3	ccd 5	ccd 6	ccd 7	ccd 8		ccd 2	ccd 3	ccd 5	ccd 6	ccd 7	ccd 8
level 1 events	43864	39590	70907	41909	60564	54358	grade 0 events	2021	1897	19416	2274	5244	3670
rejected events	38819	34851	26516	36562	26891	42971		4%	4%	27%	5%	8%	6%
rejected %	88%	88%	37%	87%	44%	79%	grade 1 events	13	13	74	9	139	27
								0%	0%	0%	0%	0%	0%
							grade 2 events	1011	886	8005	954	7203	2128
								2%	2%	11%	2%	11%	3%
							grade 3 events	578	629	1860	658	3398	1451
								1%	1%	2%	1%	5%	2%
							grade 4 events	588	576	1801	601	3411	1324
								1%	1%	2%	1%	5%	2%
							grade 5 events	1295	1286	4143	1482	4792	1829
								2%	3%	5%	3%	7%	3%
							grade 6 events	847	751	13317	860	14420	2814
								1%	1%	18%	2%	23%	5%
							grade 7 events	37511	33552	22291	35071	21957	41115
								85%	84%	31%	83%	36%	75%

## 2.2 Compared Parameters

Parameter	Planned	Actual	Parameter	Planned	Actual
Instrument	ACIS	ACIS	Obspar format version number	7	7
Detector	ACIS-235678	ACIS-235678	Obspar file type	PREDICTED	ACTUAL
Grating	NONE	NONE	Obspar update status	NONE	UPDATED
Data mode	FAINT	FAINT	Number of optional ACIS chips dropped	0	0
Observation mode	POINTING	POINTING	On-chip summing requested	N	N
[deg] Pointing RA	301.983393	301.9656175701122	Subarray requested	CUSTOM	1/4
[deg] Pointing Dec	-11.154831	-11.13391054963564	Subarray start row	385	385
[deg] Pointing Roll	98.994544	99.14769582854166	Subarray row count	256	256
[mm] SIM focus pos	-0.684267	-0.6828225247311905	Alternating exposures requested	N	N
[mm] SIM defocus	0	0.001444936568705701	[s] Primary exposure time	0.000000	1.1
[mm] SIM translation stage pos	-190.132523	-190.145094680475			
[mm] SIM translation stage offset	0	0.01257209746719923			
[s] Observation start time (MET)	134025560.184000	134024457.41398			
Observation start date	2002-04-01T05:18:16	2002-04-01T05:00:57			
[s] Observation end time (MET)	134046060.184000	134046897.22739			
Observation end date	2002-04-01T10:59:56	2002-04-01T11:14:57			
Read mode	TIMED	TIMED			

## 2.3 Aspect





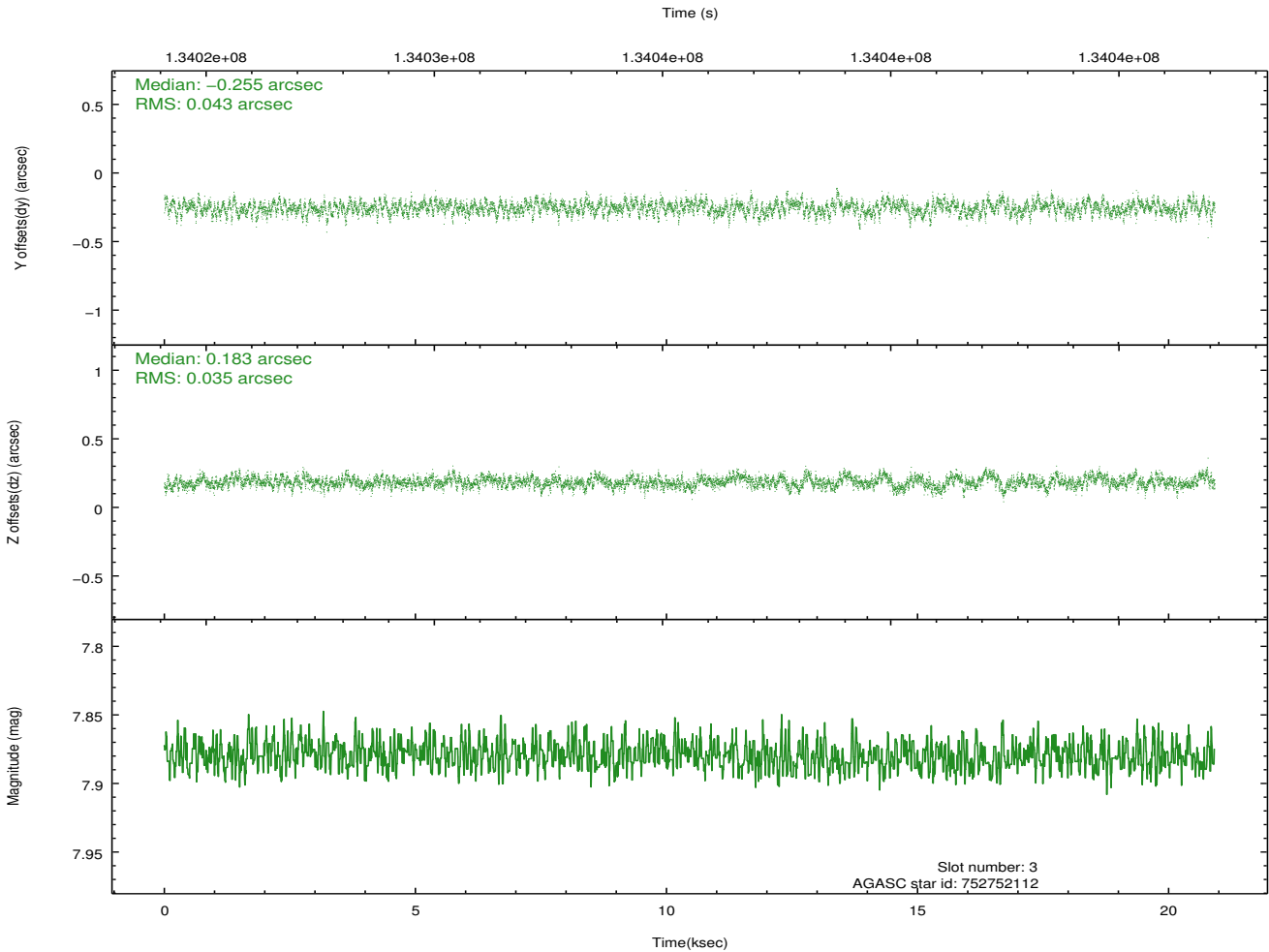
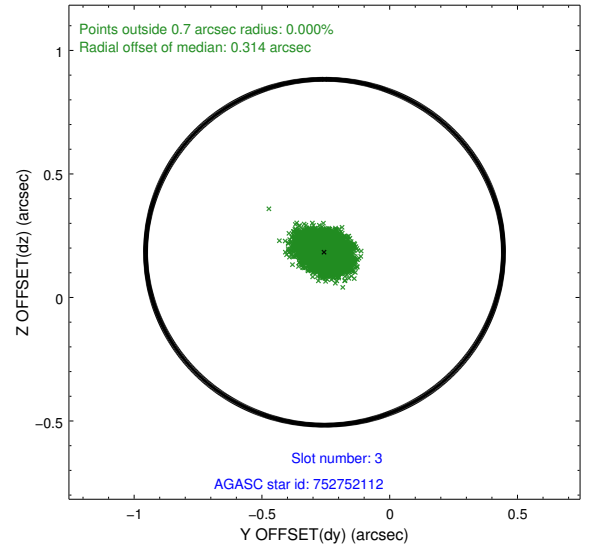
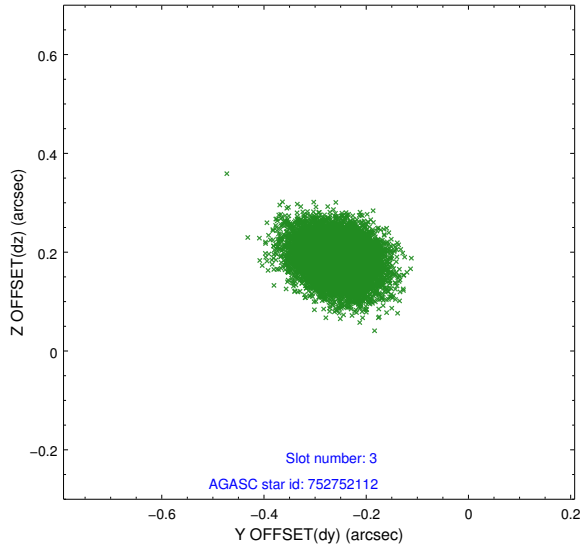
### Slot Statistics

slot	status	id	mag	n_pts	med_dy	med_dz	dr1	dr2	ra	dec	mean_y	mean_z
0	FID	ACIS-S-2	7.11	5103	-0.004	0.001	0.007	0.012	0.000000	0.000000	-755.34	-1729.27
1	FID	ACIS-S-4	7.20	5100	-0.053	0.002	0.007	0.013	0.000000	0.000000	2157.82	179.02
2	FID	ACIS-S-5	7.24	5100	0.027	0.006	0.008	0.015	0.000000	0.000000	-1807.92	172.91
3	GUIDE	752752112	7.88	10199	-0.255	0.183	0.059	0.096	302.291170	-10.507260	2131.40	-1440.06
4	GUIDE	752746768	6.77	10204	-0.283	0.329	0.089	0.132	302.529249	-10.536803	1893.70	-2255.56
5	GUIDE	753288872	9.26	10201	0.330	0.077	0.103	0.167	302.217798	-11.669719	-1960.06	-526.93
6	GUIDE	752751120	9.63	10196	-0.125	-0.384	0.150	0.238	301.276188	-10.893809	1315.17	2322.58
7	GUIDE	753283928	9.35	10197	0.342	-0.193	0.073	0.118	301.916530	-11.734610	-2024.64	558.79

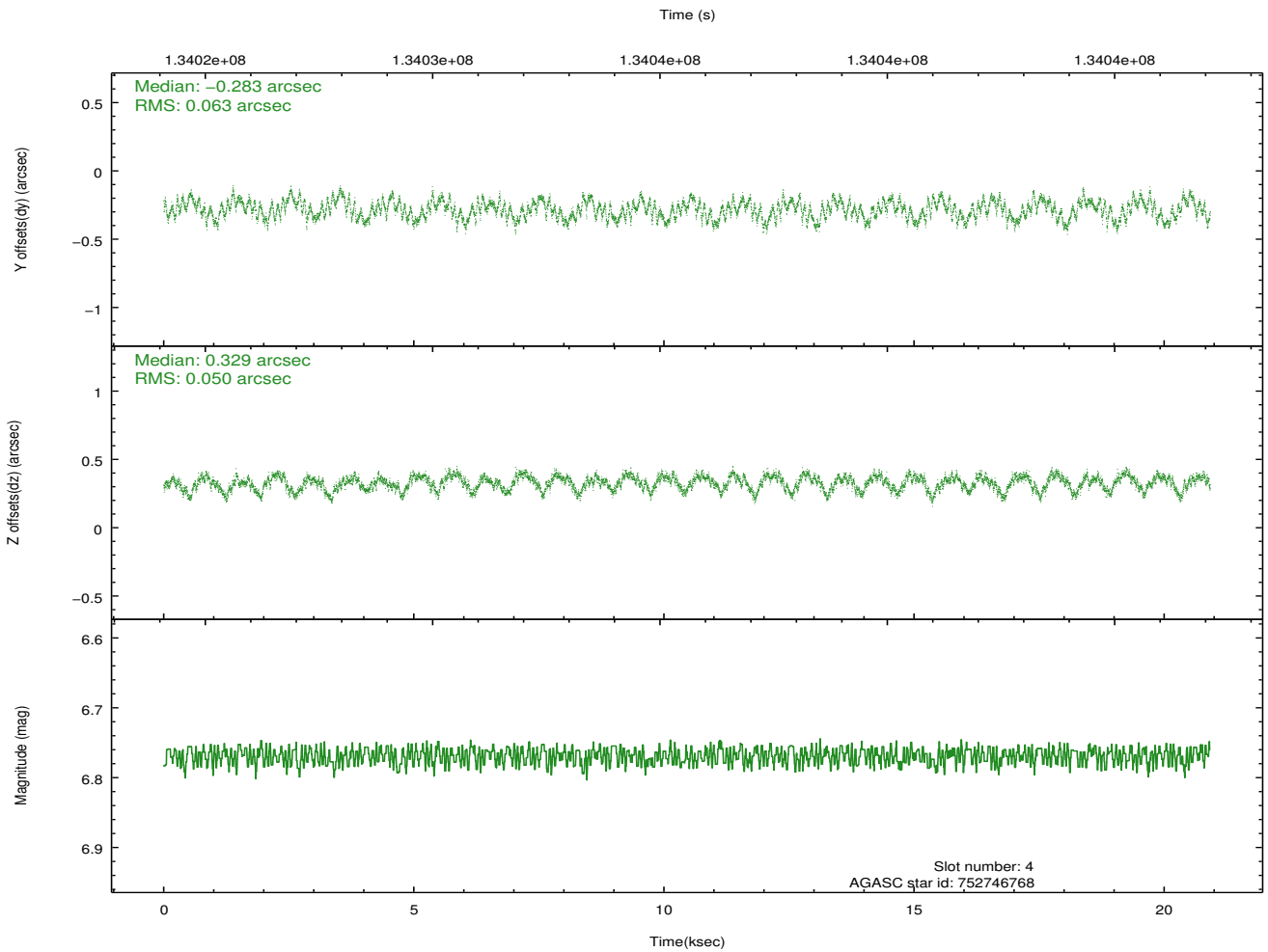
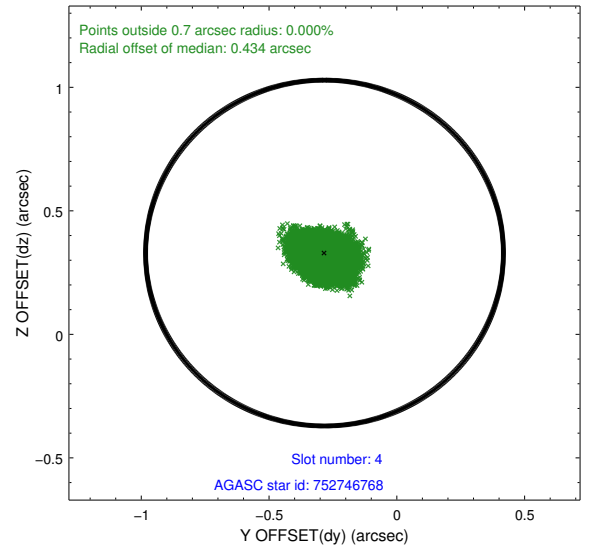
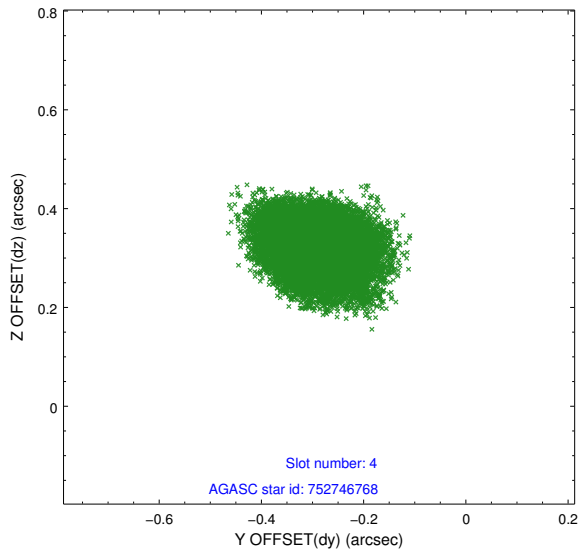
∞

## 2.4 Star Slots

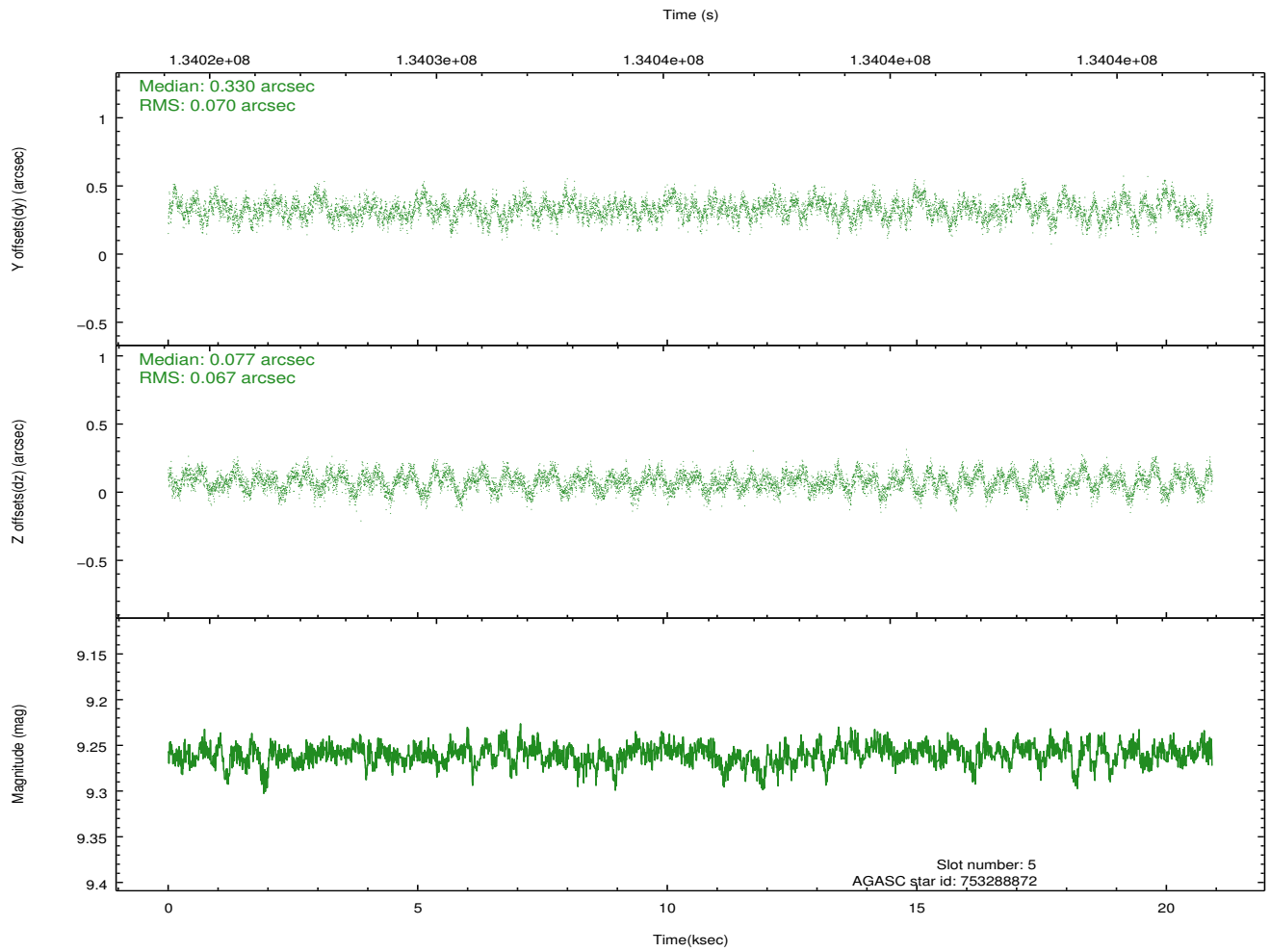
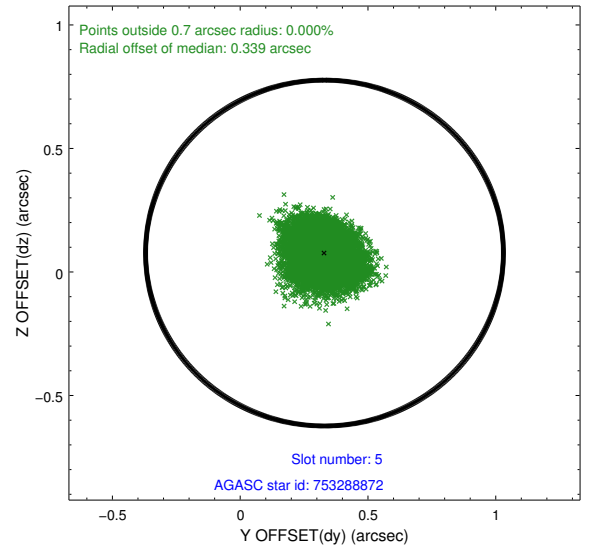
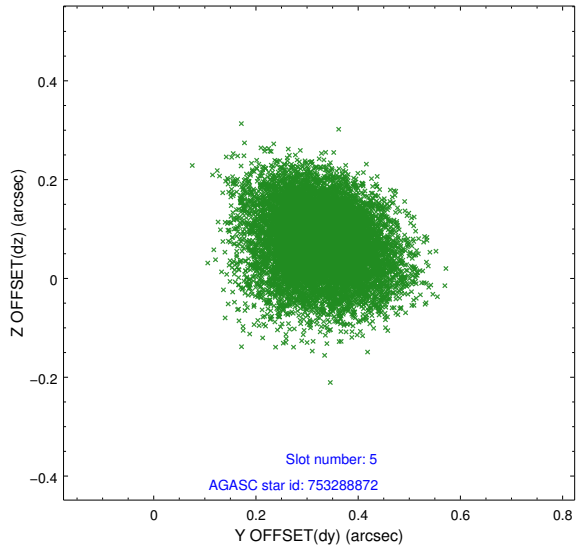
### 2.4.1 Slot 3



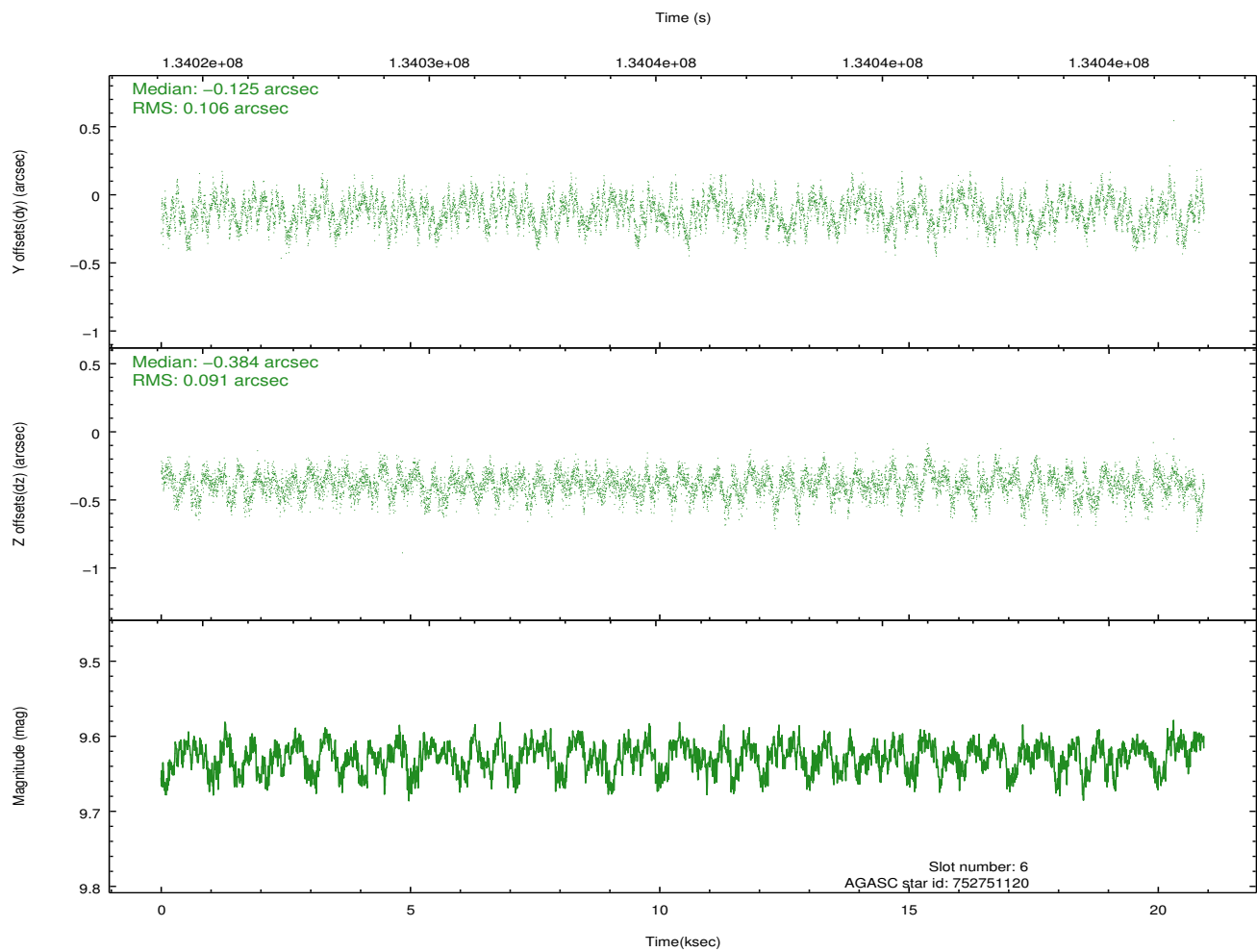
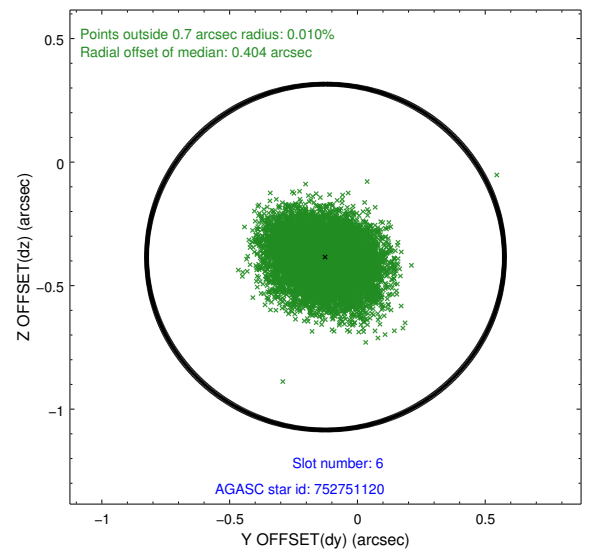
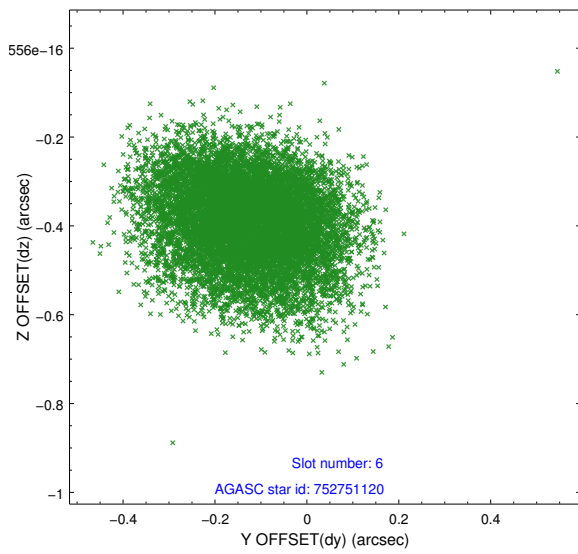
### 2.4.2 Slot 4



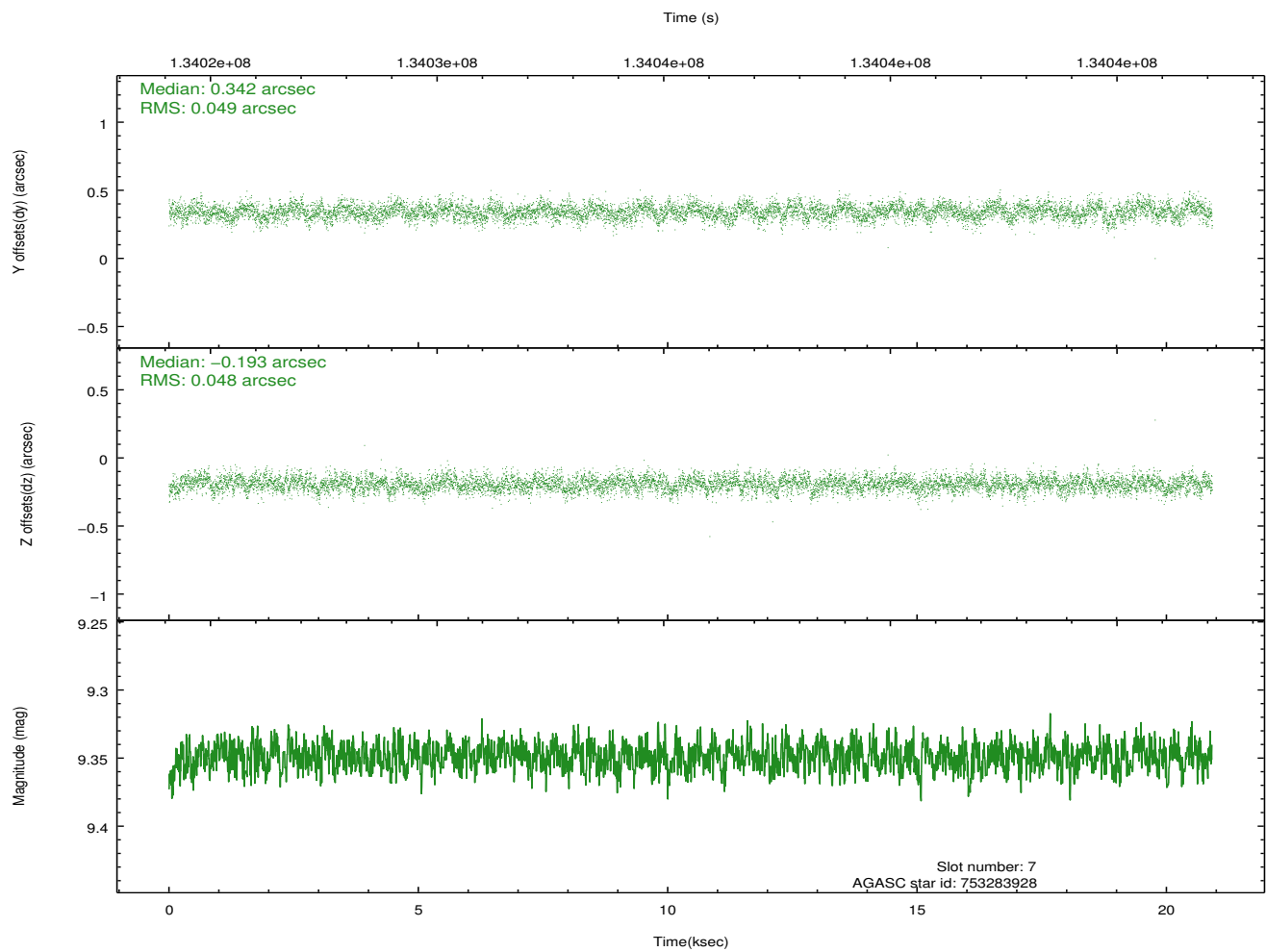
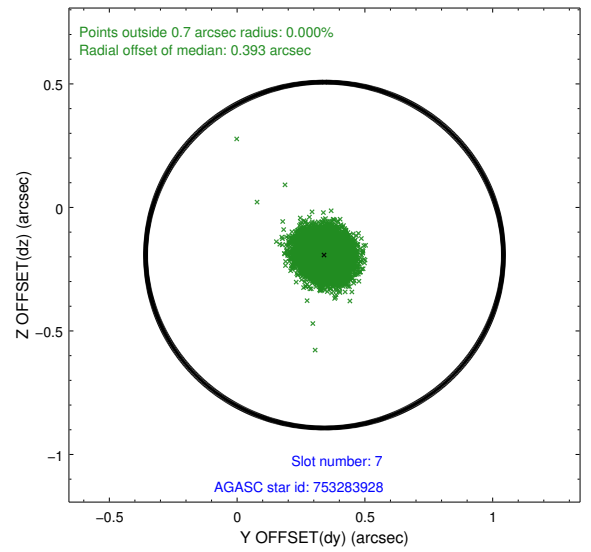
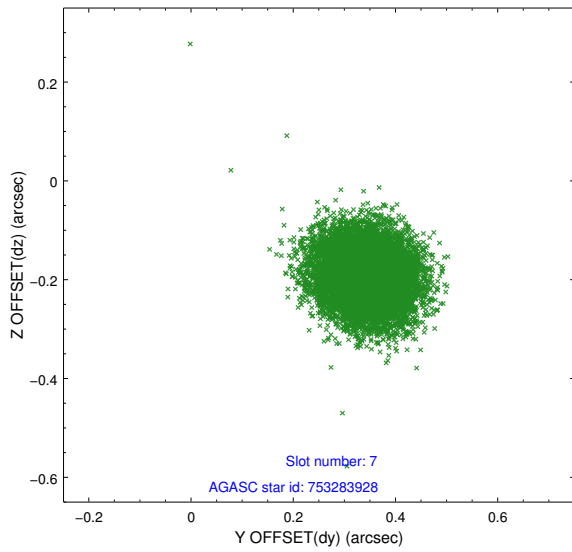
### 2.4.3 Slot 5



## 2.4.4 Slot 6

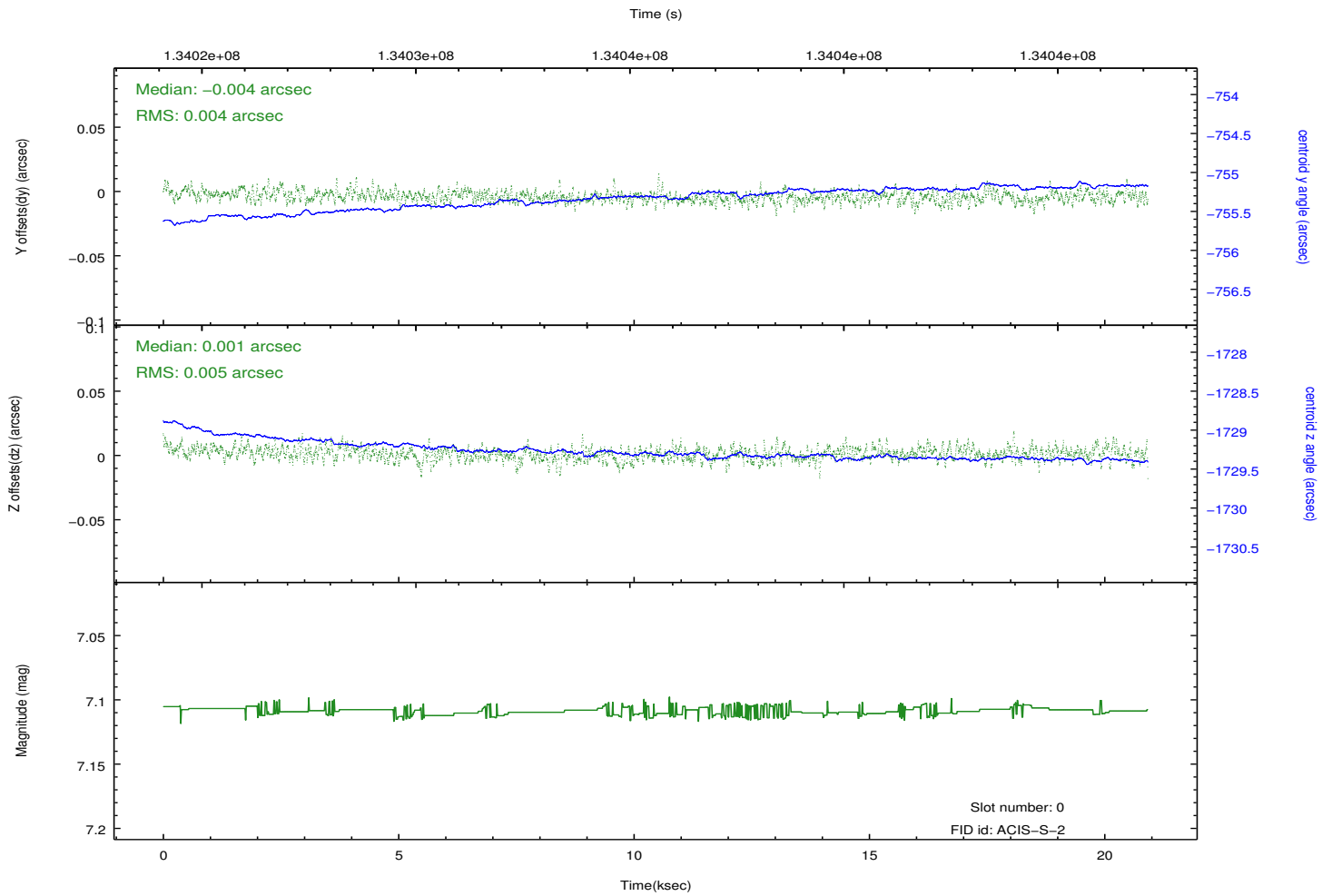
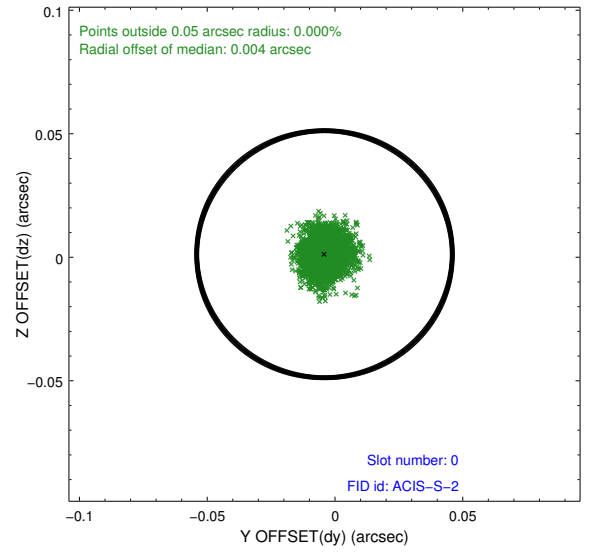
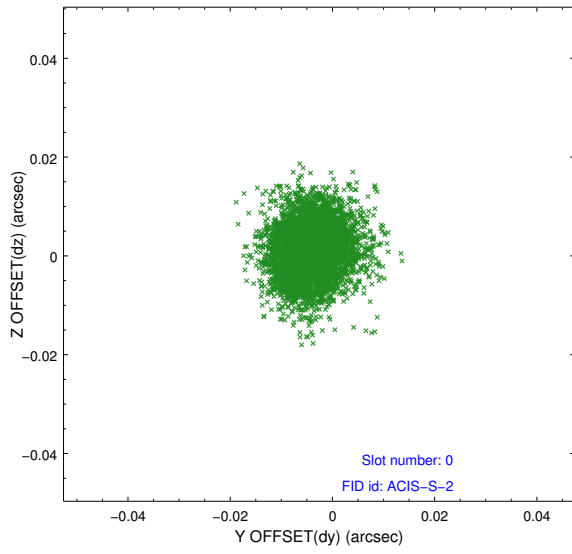


### 2.4.5 Slot 7

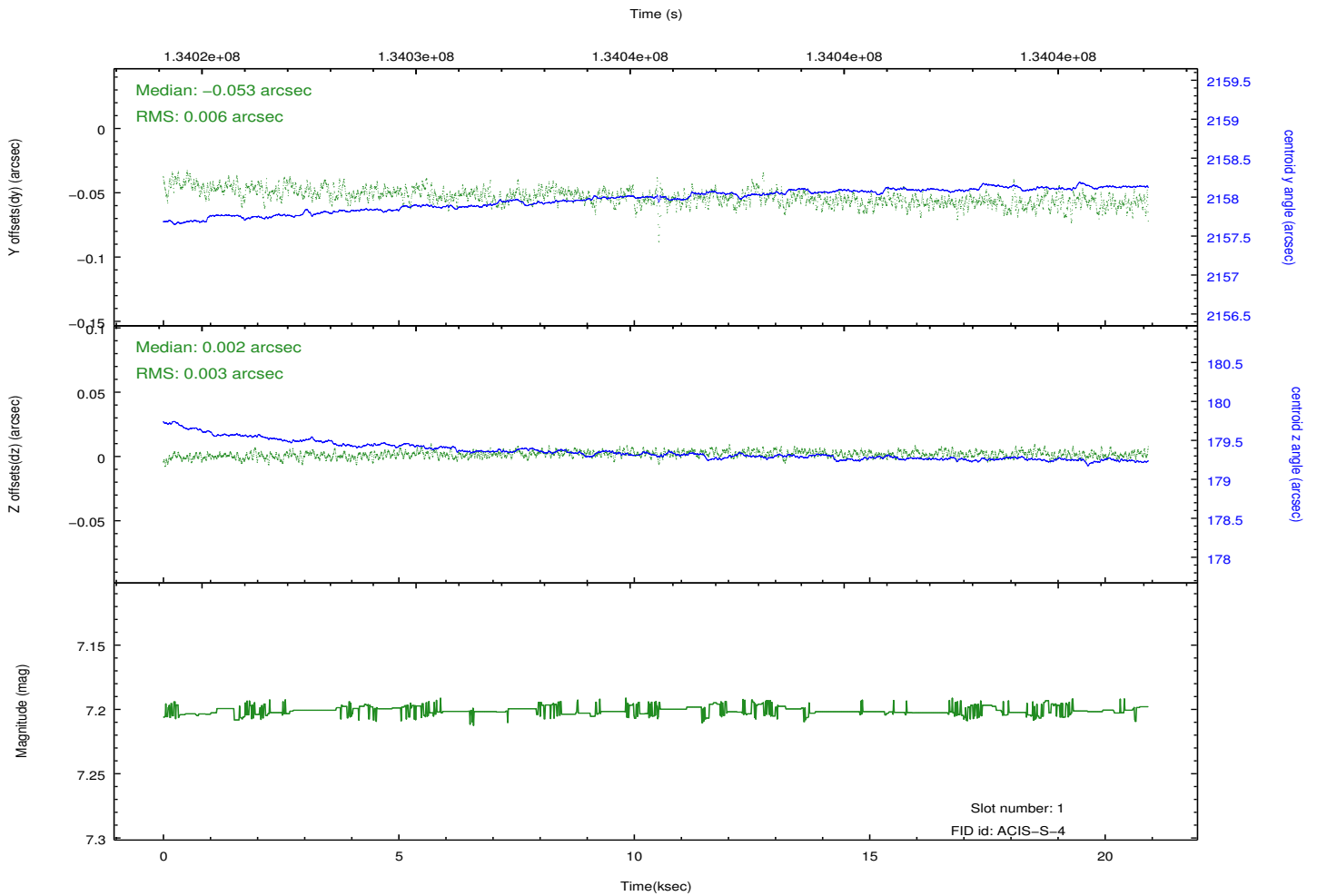
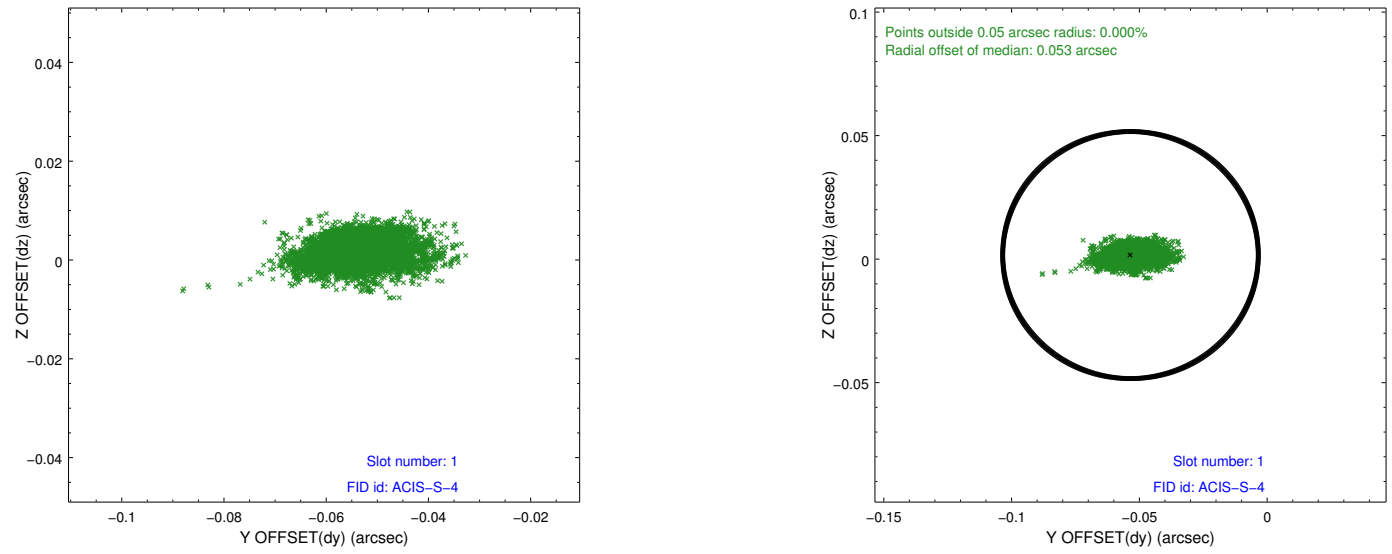


## 2.5 FID Slots

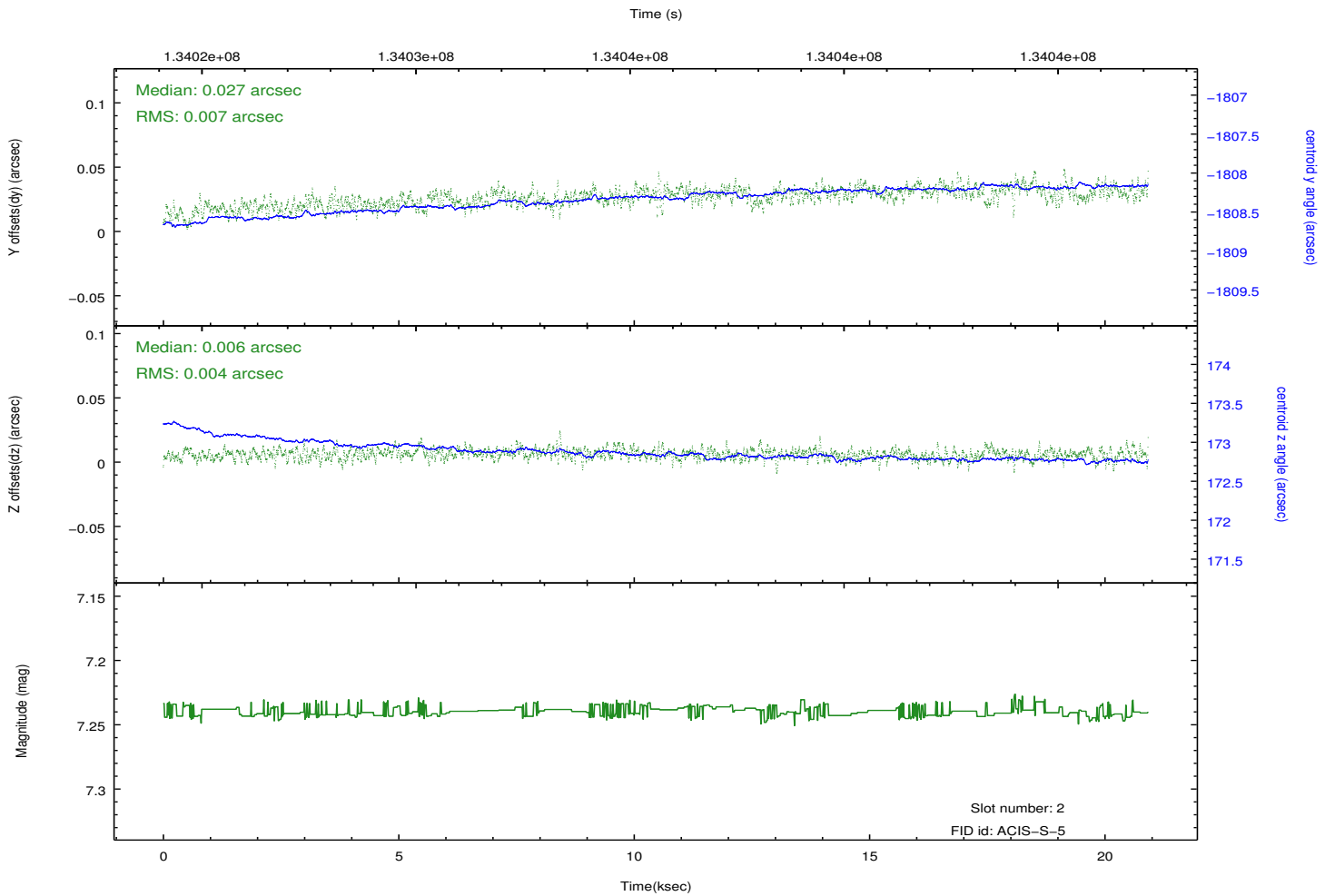
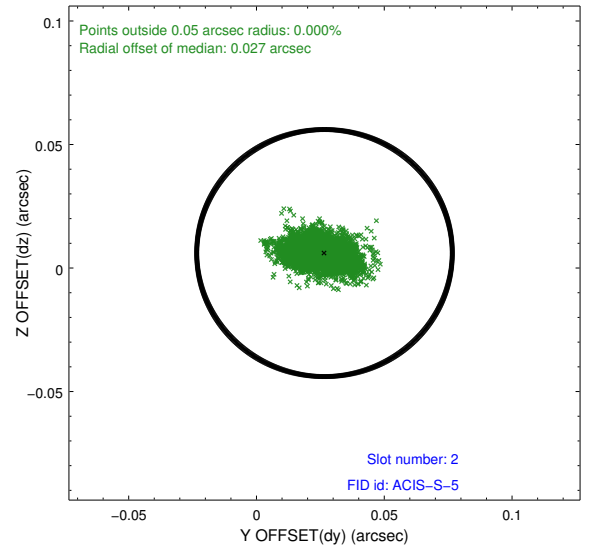
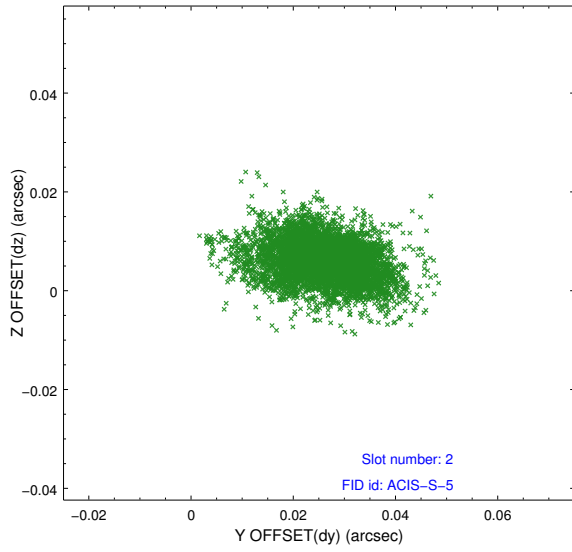
### 2.5.1 Slot 0



## 2.5.2 Slot 1



### 2.5.3 Slot 2



# A Summary

## A.1 Status

V&V Scientist	Beth Sundheim
V&V Date (YYYY-MM-DD)	2012.10.09
V&V Edition	1
V&V Disposition and Status	OK
V&V Charge Time	20.888

## A.2 Comments