

V&V Reference Report

L2 ASCDS Version : 8.4.5

Observation 2553 - L2 Version 3
Chandra X-Ray Center

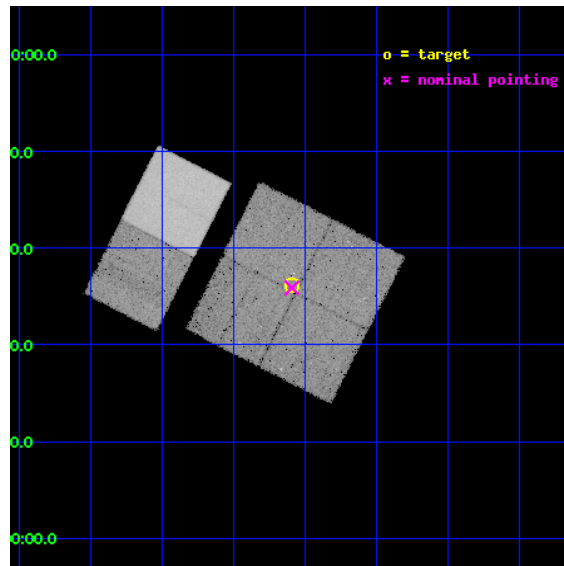
L2 Processing Date : Oct 2 2012

Contents

1	Front	2
2	OBI	3
2.1	OBI	3
2.1.1	Images	3
2.1.2	Bias	3
2.1.3	Parameters	4
2.1.4	Events	4
2.2	Compared Parameters	5
2.3	Aspect	6
2.4	Star Slots	9
2.4.1	Slot 3	9
2.4.2	Slot 4	10
2.4.3	Slot 5	11
2.4.4	Slot 6	12
2.4.5	Slot 7	13
2.5	FID Slots	14
2.5.1	Slot 0	14
2.5.2	Slot 1	15
2.5.3	Slot 2	16
A	Summary	17
A.1	Status	17
A.2	Comments	17

1 Front

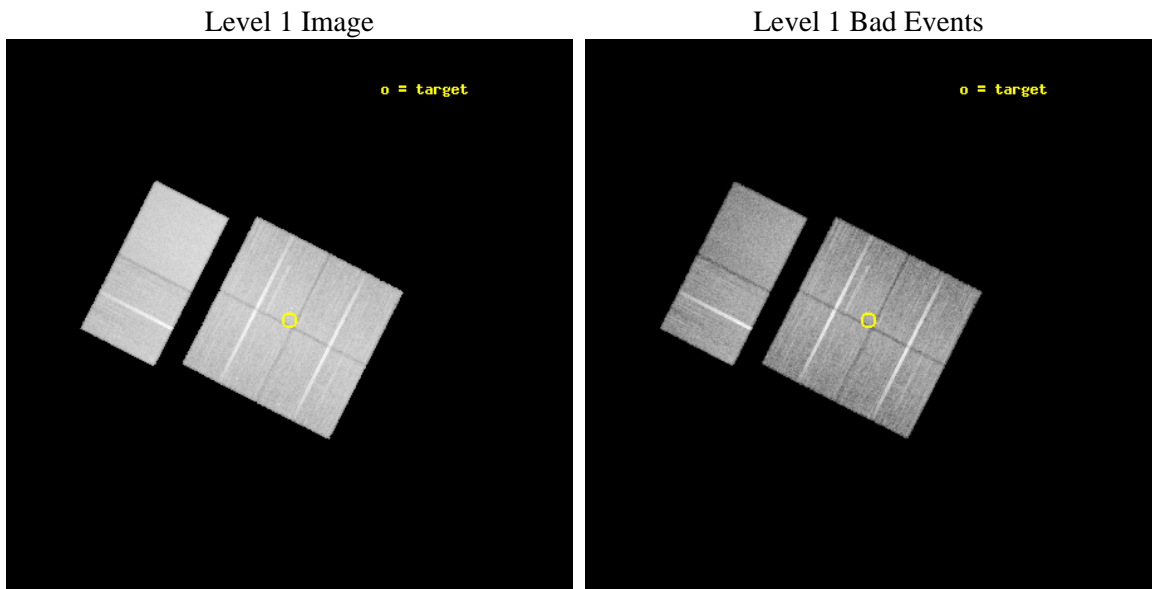
seq_num	200161	Sequence number
obs_id	2553	Observation id
title	STAR FORMATION IN QUIESCENT GIANT MOLECULAR CLOUDS	Proposal title
observer	Prof. Eric Feigelson	Principal investigator
object	MADDALENA'S CLOUD	Source name
dtcycle	0	
cycle	P	events from which exps? Prim/Second/Both
ra_targ	102.272917	Observer's specified target RA [deg]
dec_targ	-4.563889	Observer's specified target Dec [deg]
ra_nom	102.27326478168	Nominal RA [deg]
dec_nom	-4.5685772544092	Nominal Dec [deg]
roll_nom	297.03039410731	Nominal Roll [deg]
revision	3	Processing version of data
ontime	29161.155957639	Sum of GTIs [s]
livetime	28791.899842164	Livetime [s]
ontime0	29161.032837644	Sum of GTIs [s]
ontime1	29157.832887471	Sum of GTIs [s]
ontime2	29161.114917651	Sum of GTIs [s]
ontime3	29161.155957639	Sum of GTIs [s]
ontime6	29161.238037646	Sum of GTIs [s]
ontime7	29161.196997643	Sum of GTIs [s]
l2events	232313	Number of level 2 events



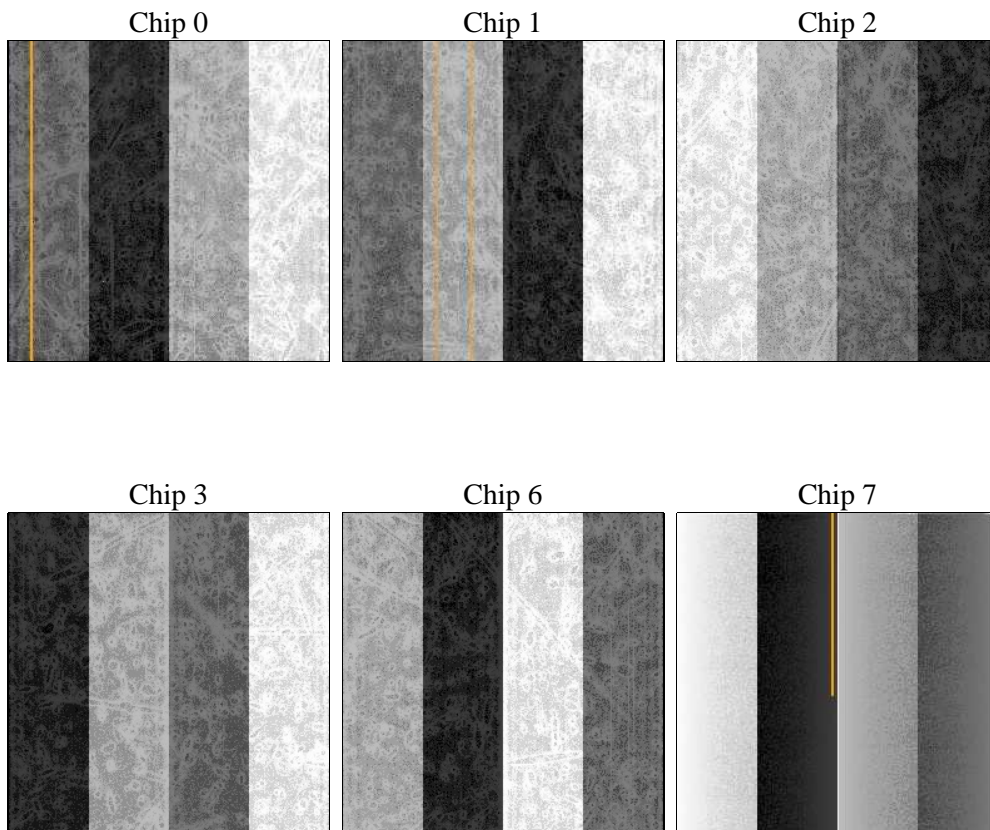
2 OBI

2.1 OBI

2.1.1 Images



2.1.2 Bias



2.1.3 Parameters

obi_num	0	Obi number	sched_exp_time	29200.000000	[s] Scheduled observation exposure time
ascdsver	8.4.5	Processing system revision	ontime	29161.155957639	Sum of GTIs [s]
caldbver	4.5.2	 	ontime0	29161.032837644	Sum of GTIs [s]
date	2012-10-02T05:47:28	Date and time of file creation	ontime1	29157.832887471	Sum of GTIs [s]
revision	3	Processing version of data	ontime2	29161.114917651	Sum of GTIs [s]
			ontime3	29161.155957639	Sum of GTIs [s]
			ontime6	29161.238037646	Sum of GTIs [s]
			ontime7	29161.196997643	Sum of GTIs [s]
			l1events	1225124	Number of level 1 events

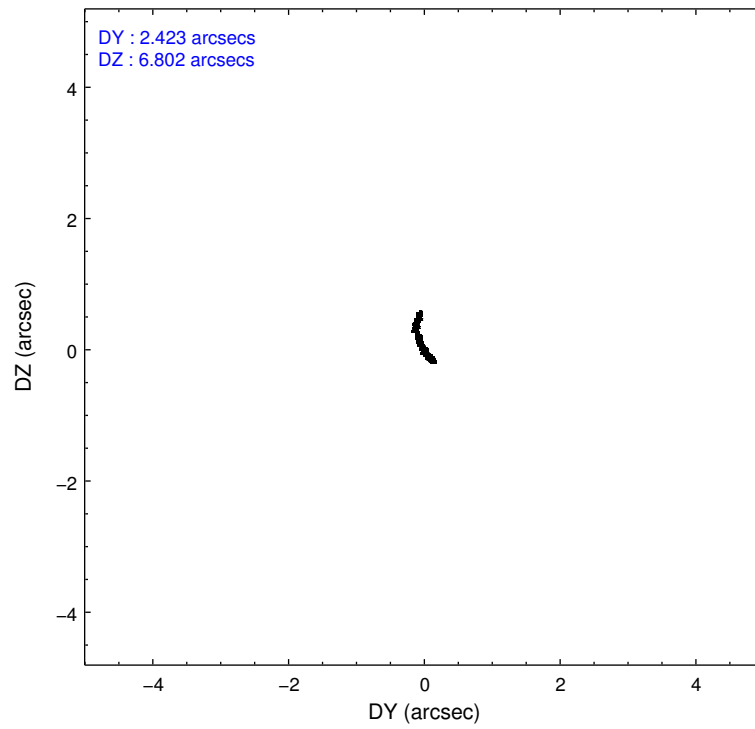
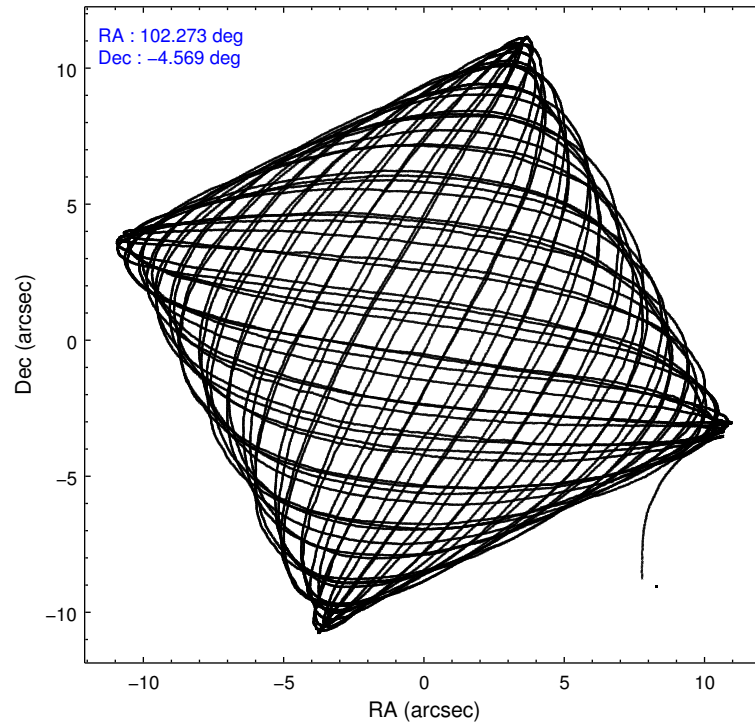
2.1.4 Events

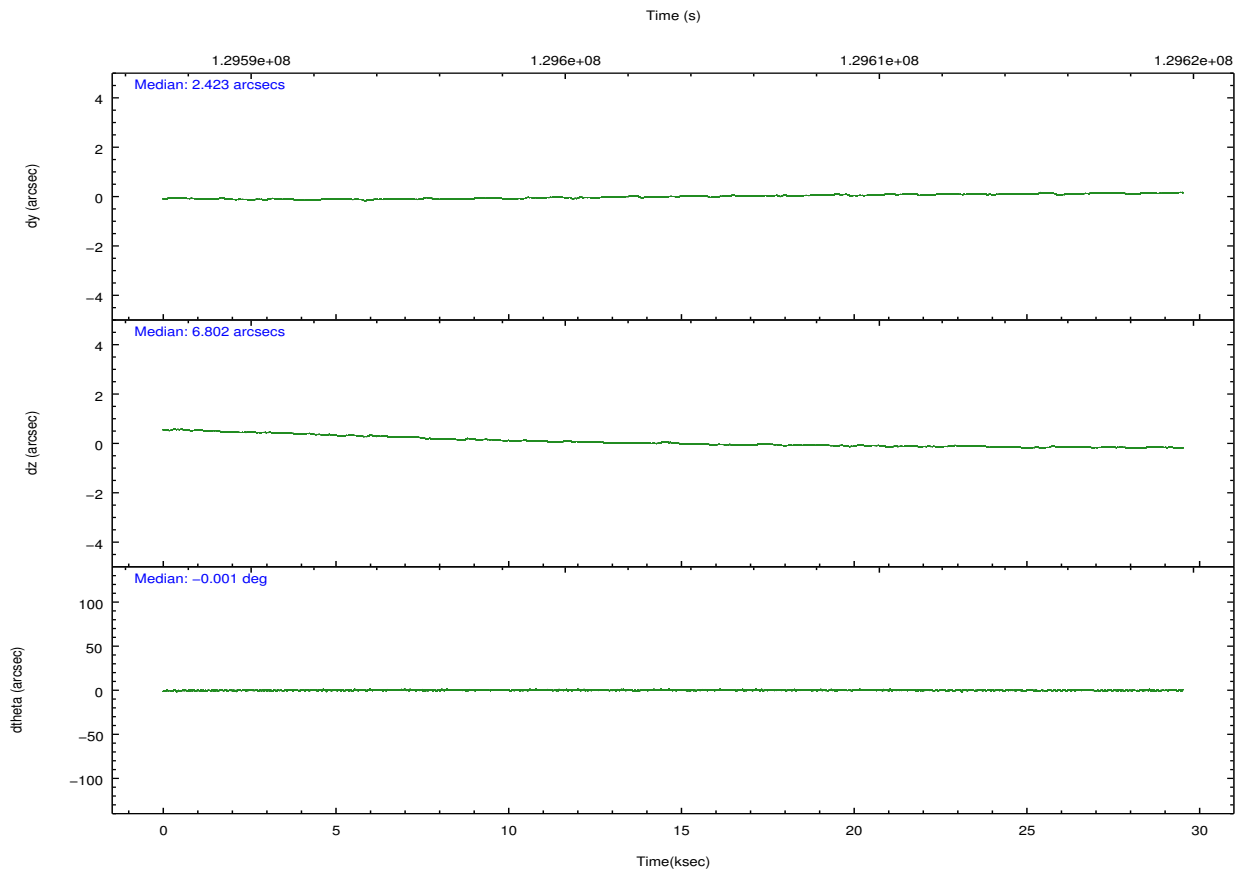
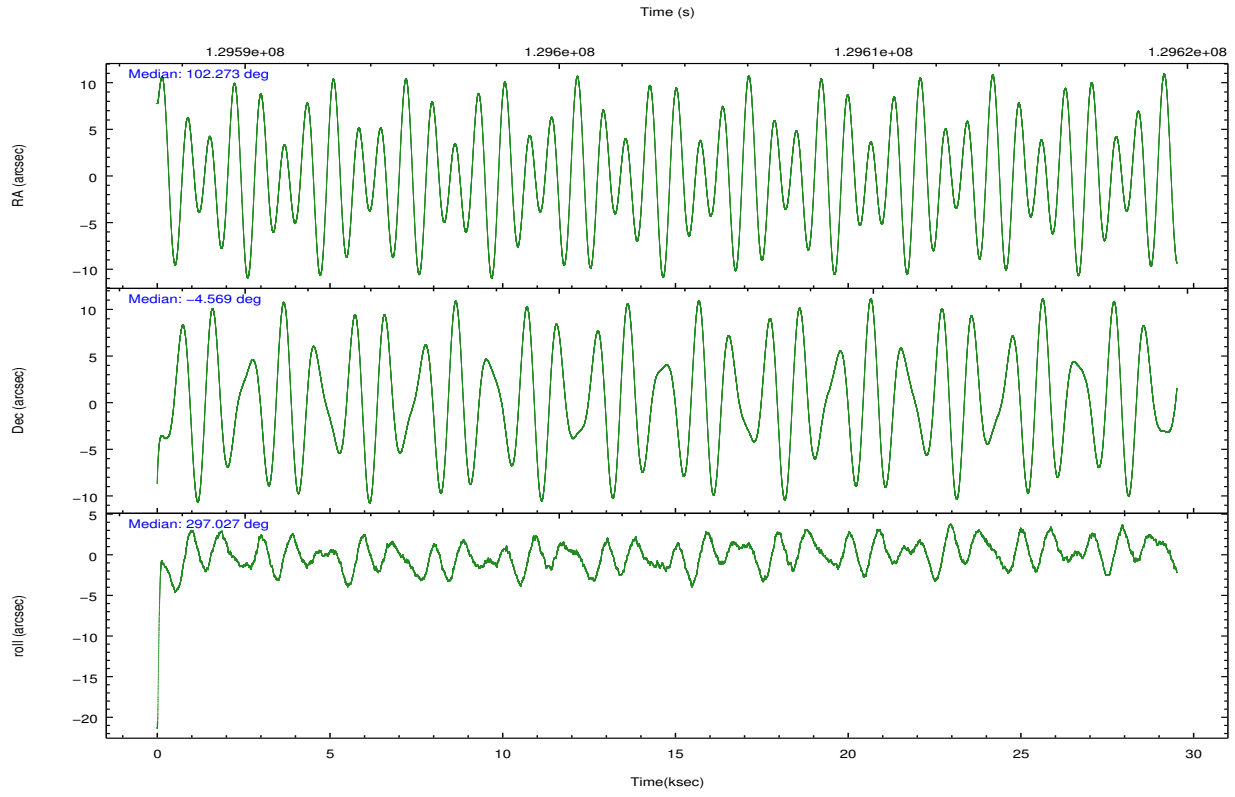
	ccd 0	ccd 1	ccd 2	ccd 3	ccd 6	ccd 7		ccd 0	ccd 1	ccd 2	ccd 3	ccd 6	ccd 7
level 1 events	182142	181886	194041	197999	206332	262724	grade 0 events	13482	13554	12638	13683	13213	10174
rejected events	154496	152943	167783	170370	178314	148540		7%	7%	6%	6%	6%	3%
rejected %	84%	84%	86%	86%	86%	56%	grade 1 events	107	94	83	98	115	228
								0%	0%	0%	0%	0%	0%
							grade 2 events	5342	5450	5397	5057	5211	21754
								2%	2%	2%	2%	2%	8%
							grade 3 events	2426	2674	2142	2307	2449	9913
								1%	1%	1%	1%	1%	3%
							grade 4 events	2271	2499	2151	2315	2311	9811
								1%	1%	1%	1%	1%	3%
							grade 5 events	7053	7450	6663	7641	8362	24278
								3%	4%	3%	3%	4%	9%
							grade 6 events	4127	4768	3933	4269	4836	62544
								2%	2%	2%	2%	2%	23%
							grade 7 events	147334	145397	161034	162629	169835	124022
								80%	79%	82%	82%	82%	47%

2.2 Compared Parameters

Parameter	Planned	Actual	Parameter	Planned	Actual
Instrument	ACIS	ACIS	Obspar format version number	7	7
Detector	ACIS-012367	ACIS-012367	Obspar file type	PREDICTED	ACTUAL
Grating	NONE	NONE	Obspar update status	NONE	UPDATED
Data mode	FAINT	FAINT	Number of optional ACIS chips dropped	0	0
Observation mode	POINTING	POINTING	On-chip summing requested	N	N
[deg] Pointing RA	102.250139	102.2732647816764	Subarray requested	NONE	NONE
[deg] Pointing Dec	-4.553705	-4.568577254409214	Alternating exposures requested	N	N
[deg] Pointing Roll	296.819868	297.0303941073139	[s] Primary exposure time	0.000000	3.2
[mm] SIM focus pos	-0.782348	-0.7809083437167272			
[mm] SIM defocus	0	0.001439871863259334			
[mm] SIM translation stage pos	-233.592463	-233.5874344608287			
[mm] SIM translation stage offset	0	-0.005018542100998502			
[s] Observation start time (MET)	129588989.184000	129587961.52201			
Observation start date	2002-02-08T20:55:25	2002-02-08T20:39:21			
[s] Observation end time (MET)	129618189.184000	129618647.97325			
Observation end date	2002-02-09T05:02:05	2002-02-09T05:10:47			
Read mode	TIMED	TIMED			

2.3 Aspect



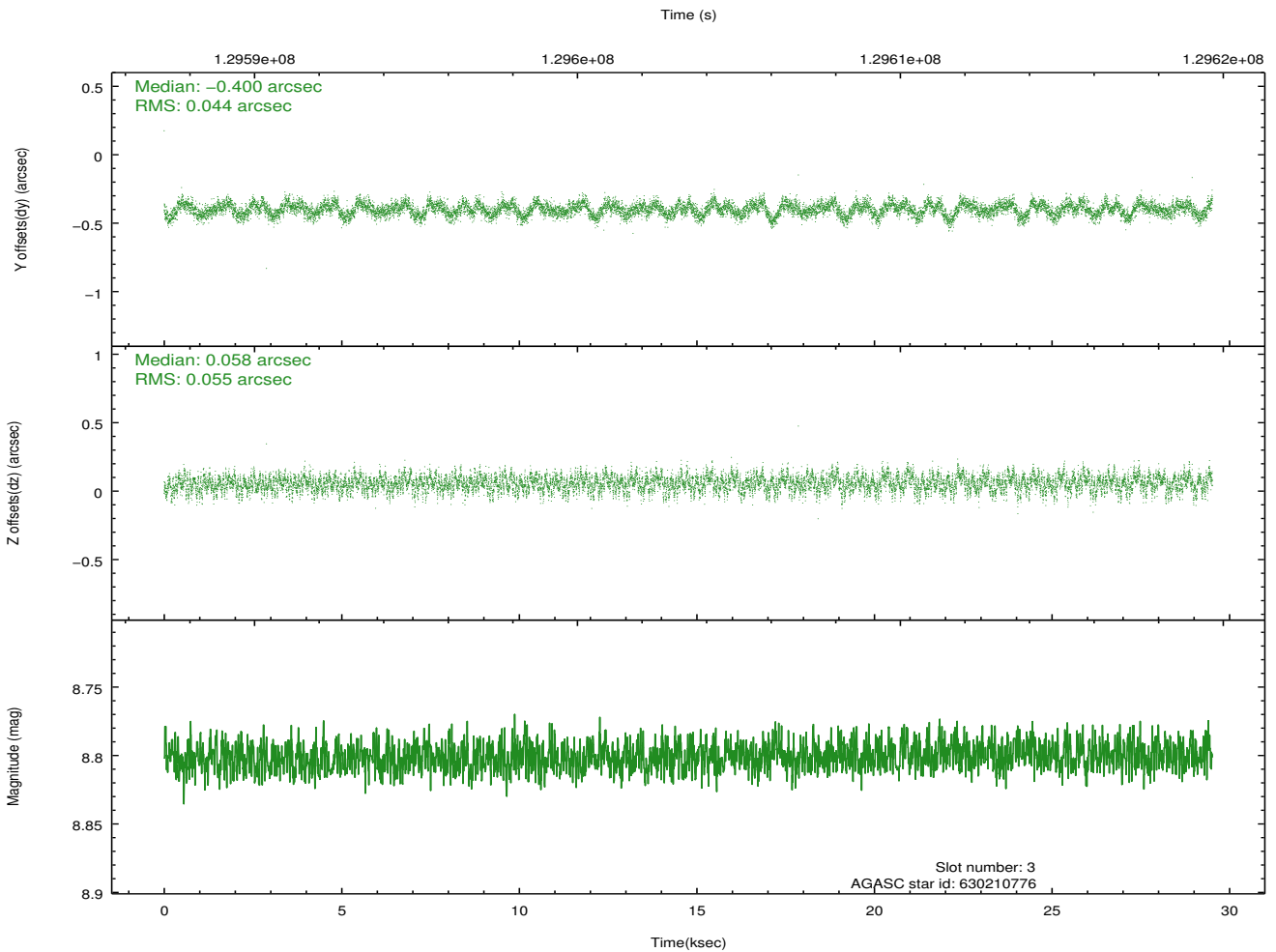
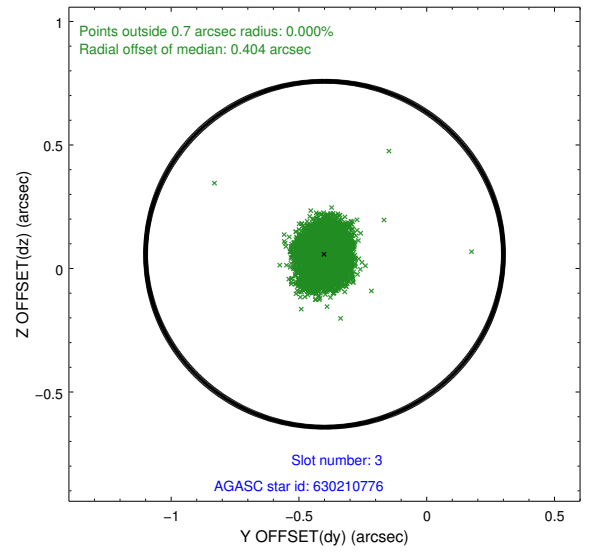
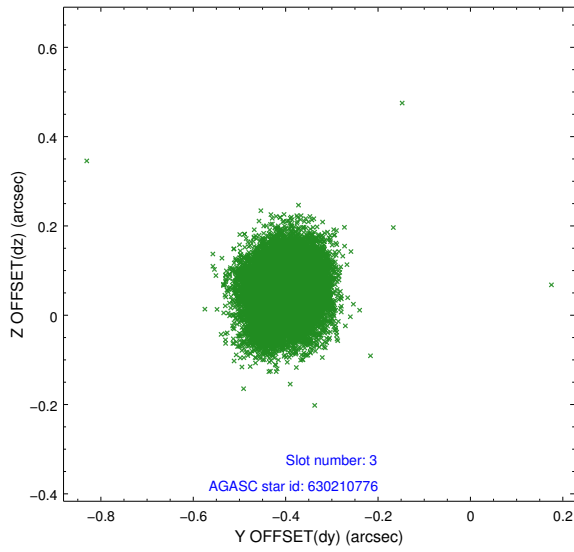


Slot Statistics

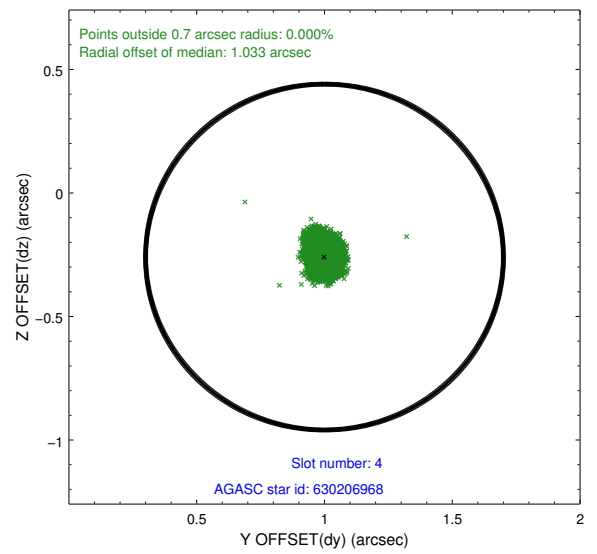
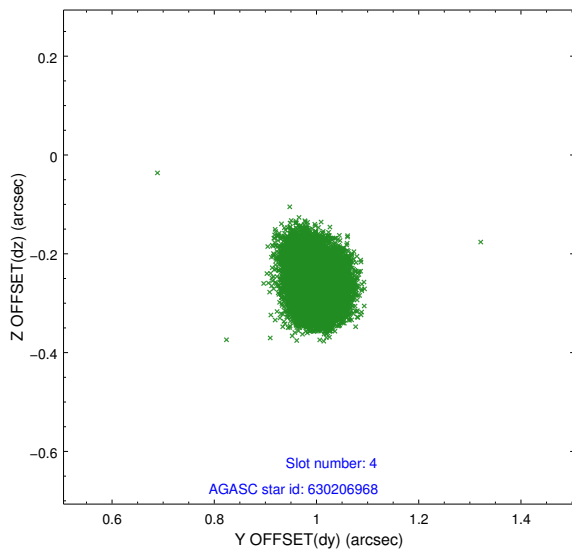
slot	status	id	mag	n_pts	med_dy	med_dz	dr1	dr2	ra	dec	mean_y	mean_z
0	FID	ACIS-I-1	7.24	7200	-0.010	0.021	0.009	0.018	0.000000	0.000000	937.35	-830.26
1	FID	ACIS-I-5	7.24	7200	-0.037	0.045	0.007	0.011	0.000000	0.000000	-1810.69	1067.28
2	FID	ACIS-I-6	7.26	7200	-0.044	0.004	0.011	0.020	0.000000	0.000000	402.84	1711.78
3	GUIDE	630210776	8.80	14395	-0.400	0.058	0.076	0.120	101.468117	-4.445990	-1611.26	-2330.34
4	GUIDE	630206968	7.11	14401	1.000	-0.259	0.053	0.085	102.148974	-4.075871	-1697.91	451.60
5	GUIDE	630195104	8.48	14398	-0.332	0.073	0.088	0.135	102.928630	-4.579783	1183.01	2130.50
6	GUIDE	630203984	8.79	14395	-0.175	-0.017	0.058	0.097	102.121818	-4.884598	855.62	-947.73
7	GUIDE	630202512	9.48	14385	-0.090	0.148	0.113	0.182	102.831325	-4.907538	2078.21	1285.82

2.4 Star Slots

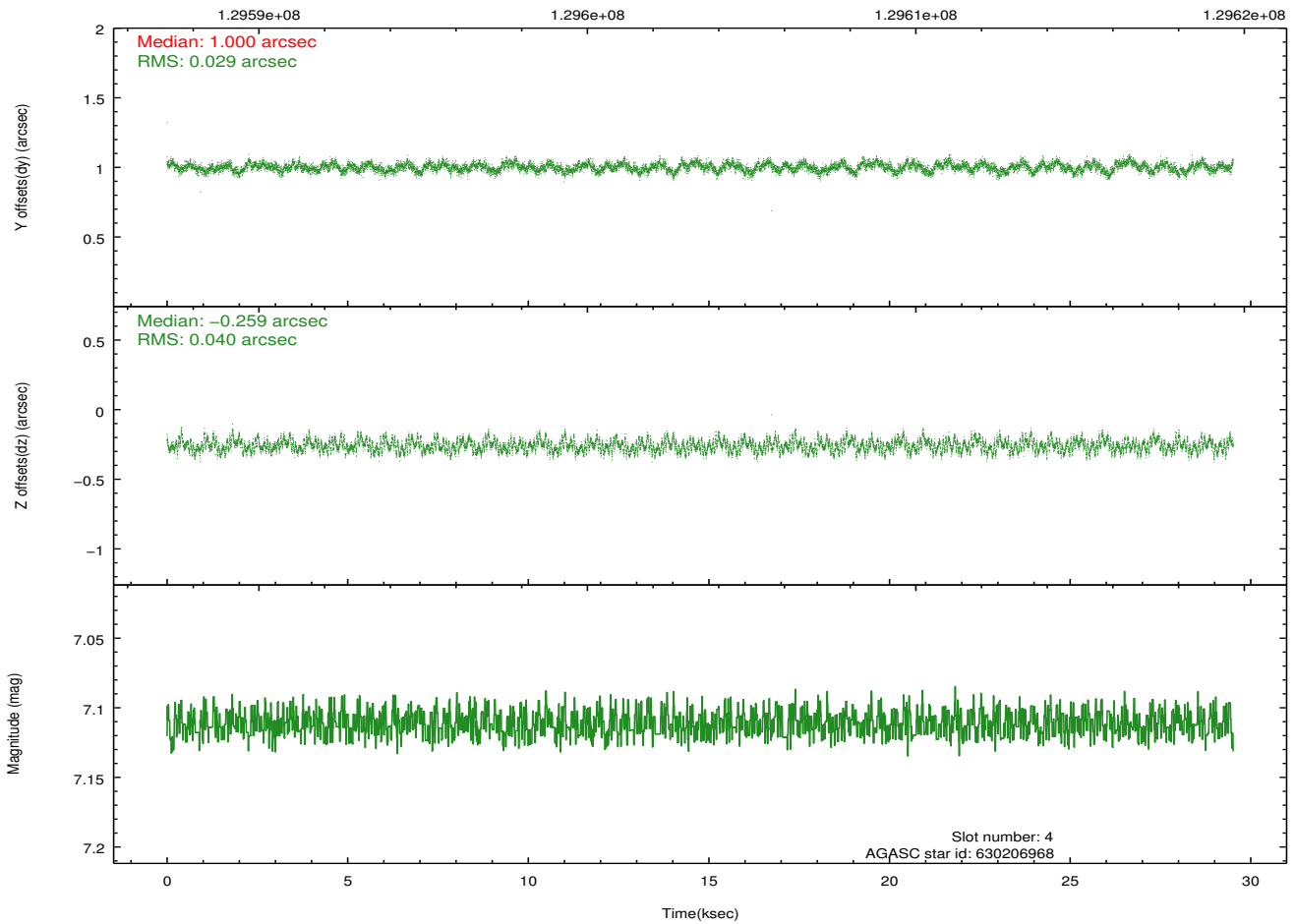
2.4.1 Slot 3



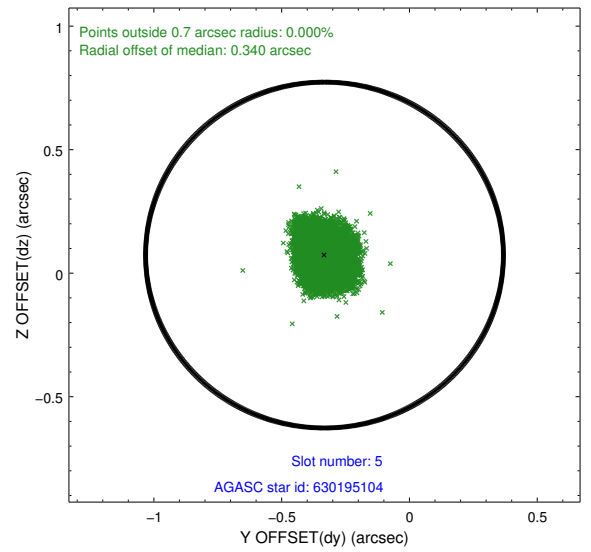
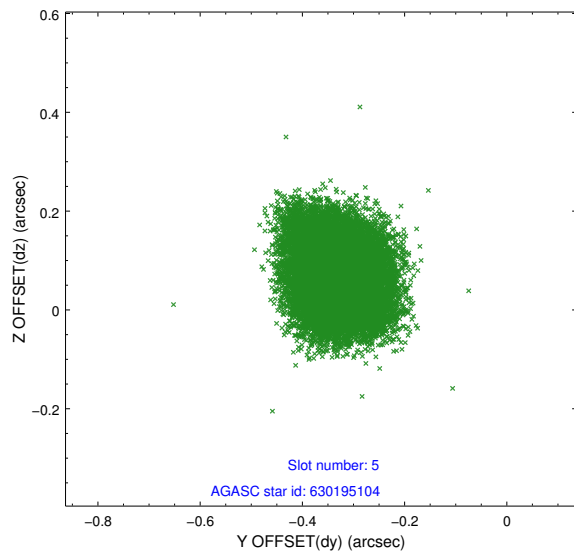
2.4.2 Slot 4



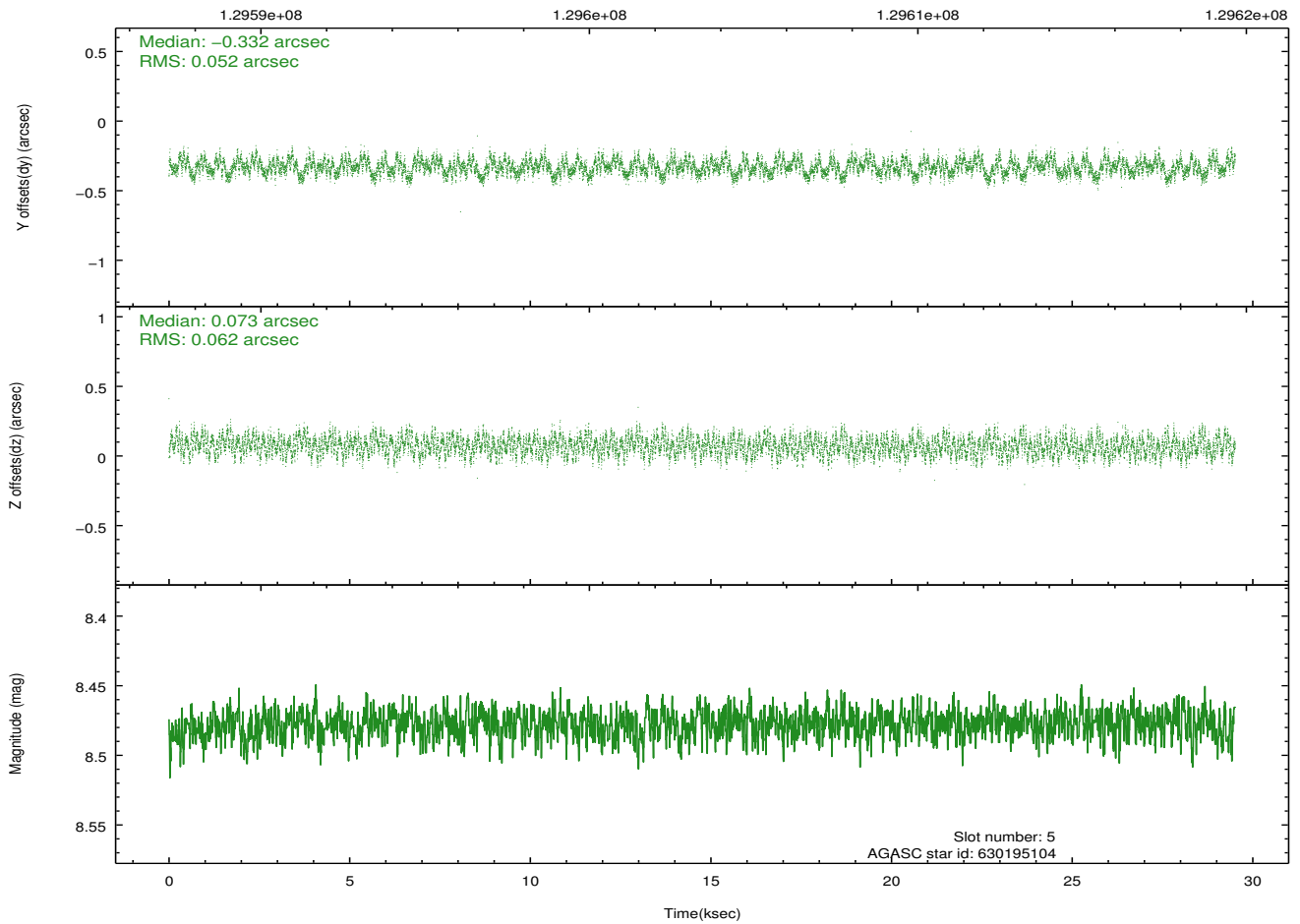
Time (s)



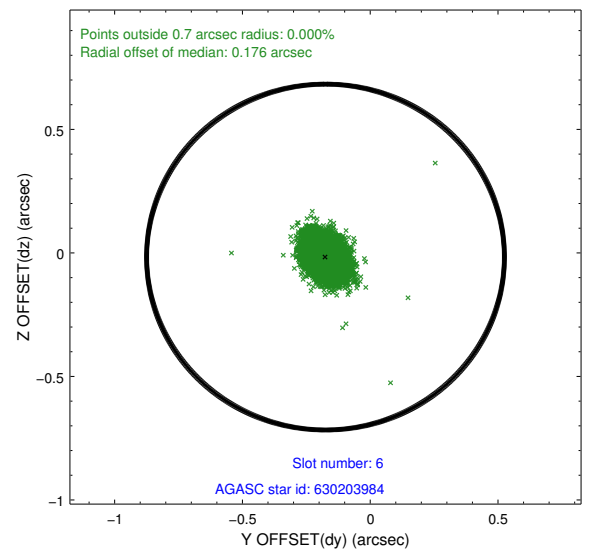
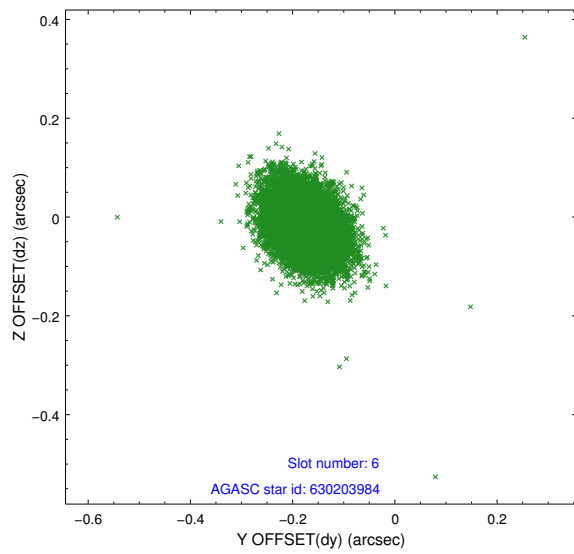
2.4.3 Slot 5



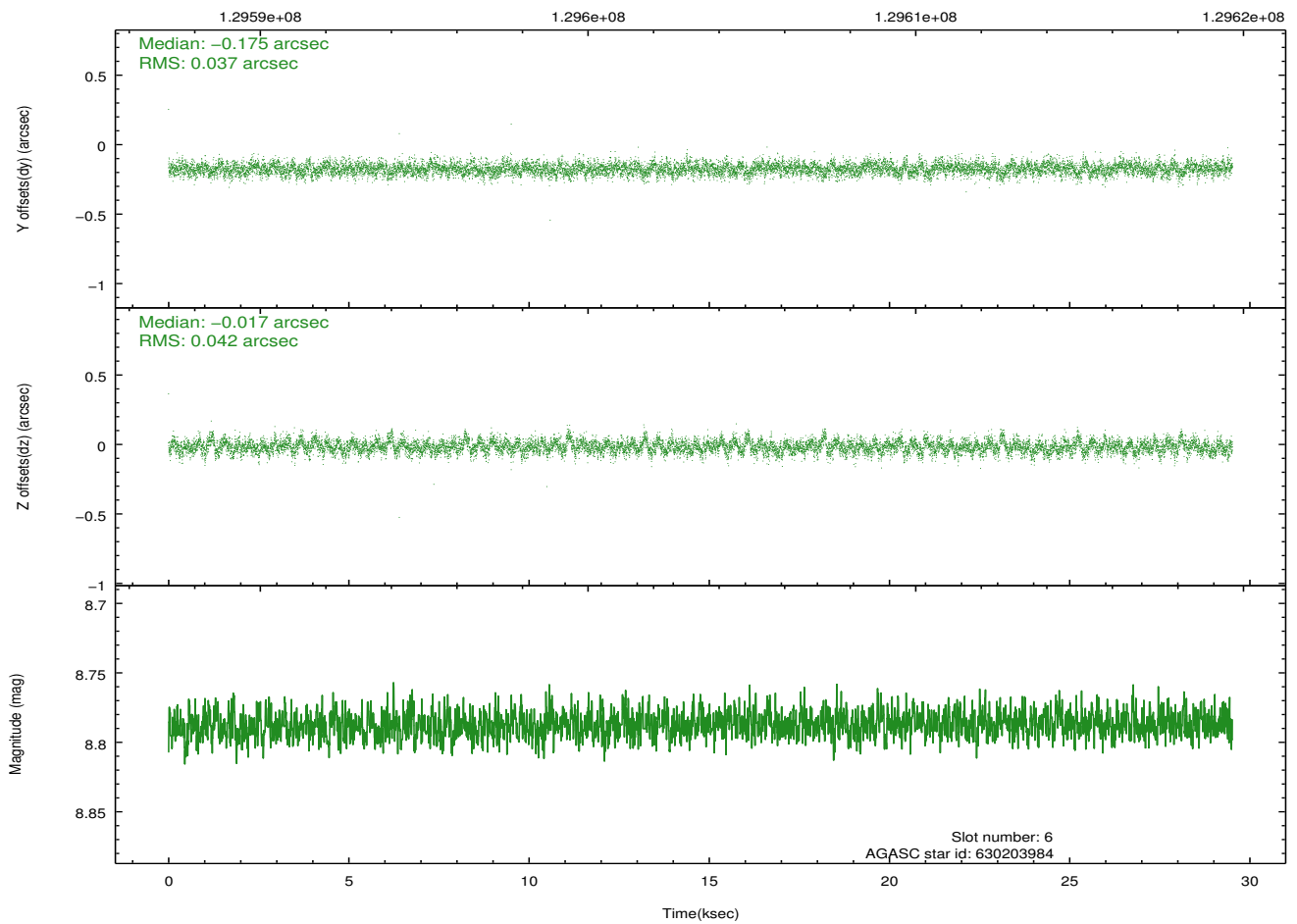
Time (s)



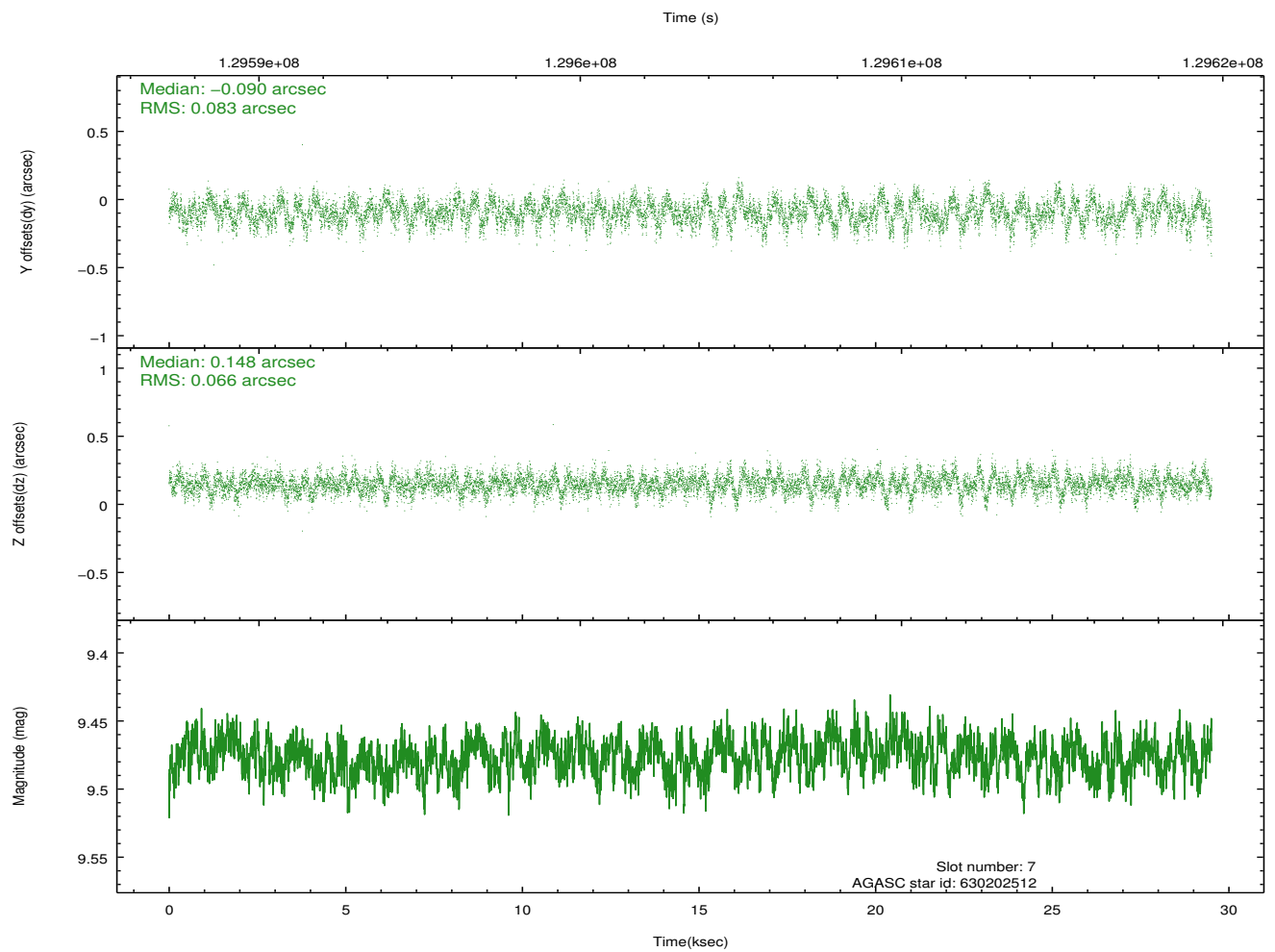
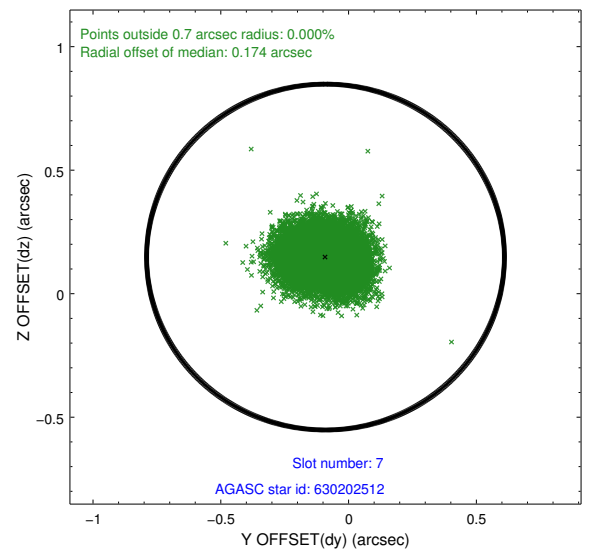
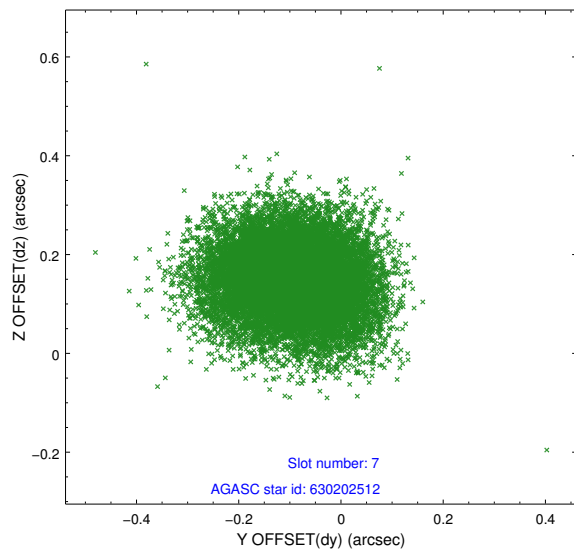
2.4.4 Slot 6



Time (s)

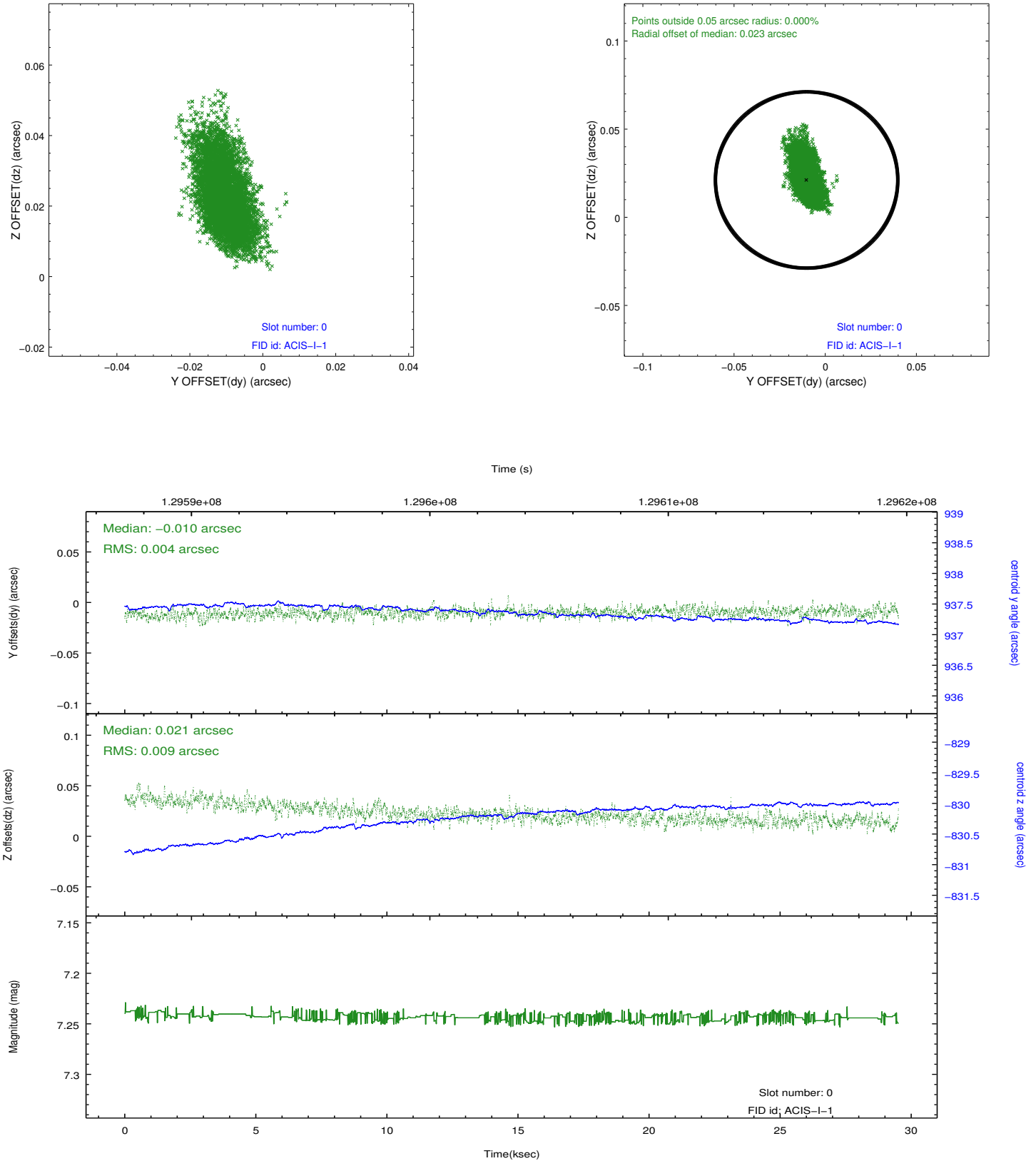


2.4.5 Slot 7

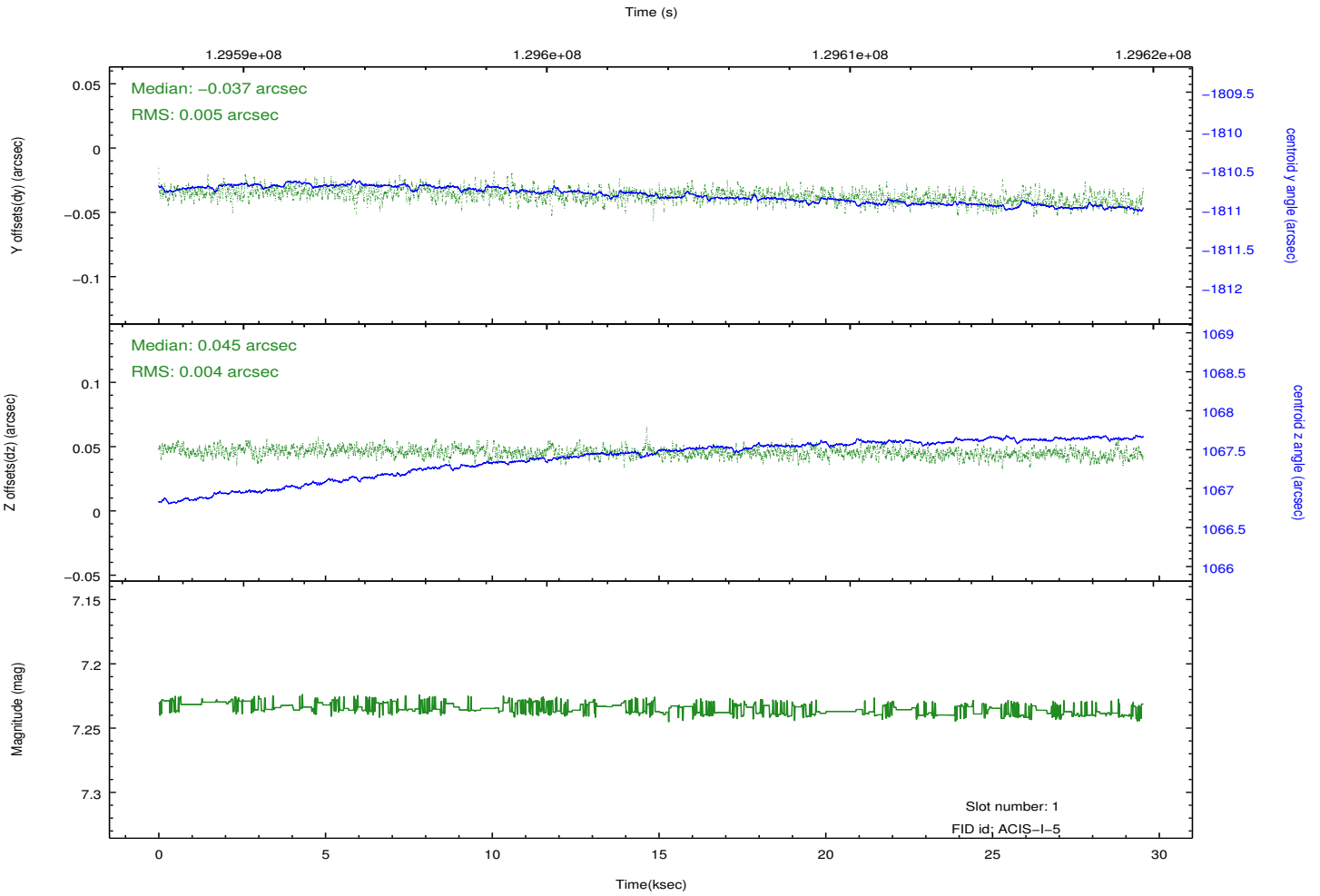
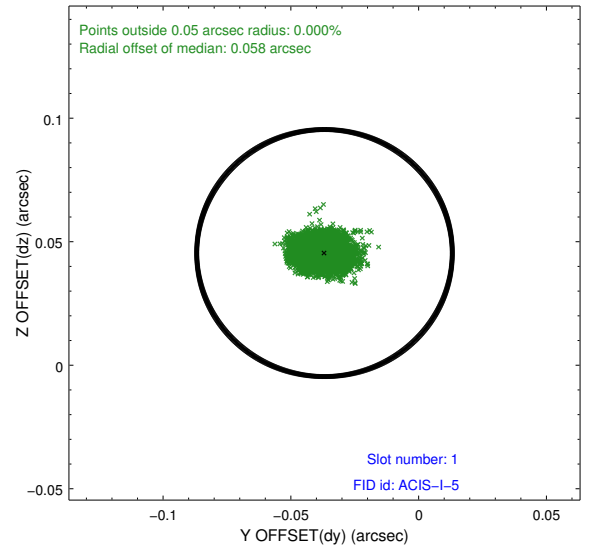
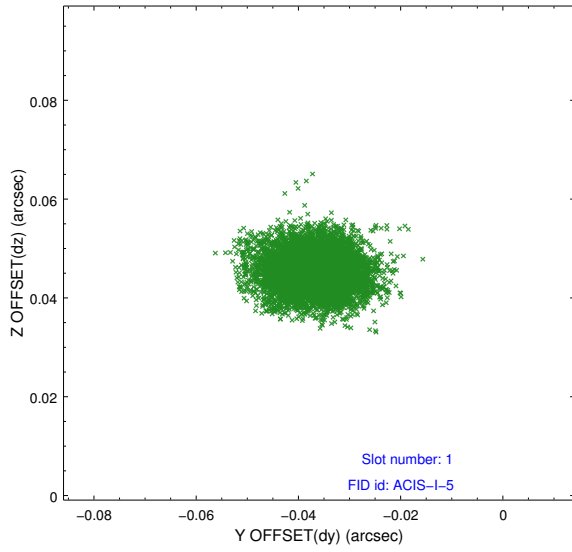


2.5 FID Slots

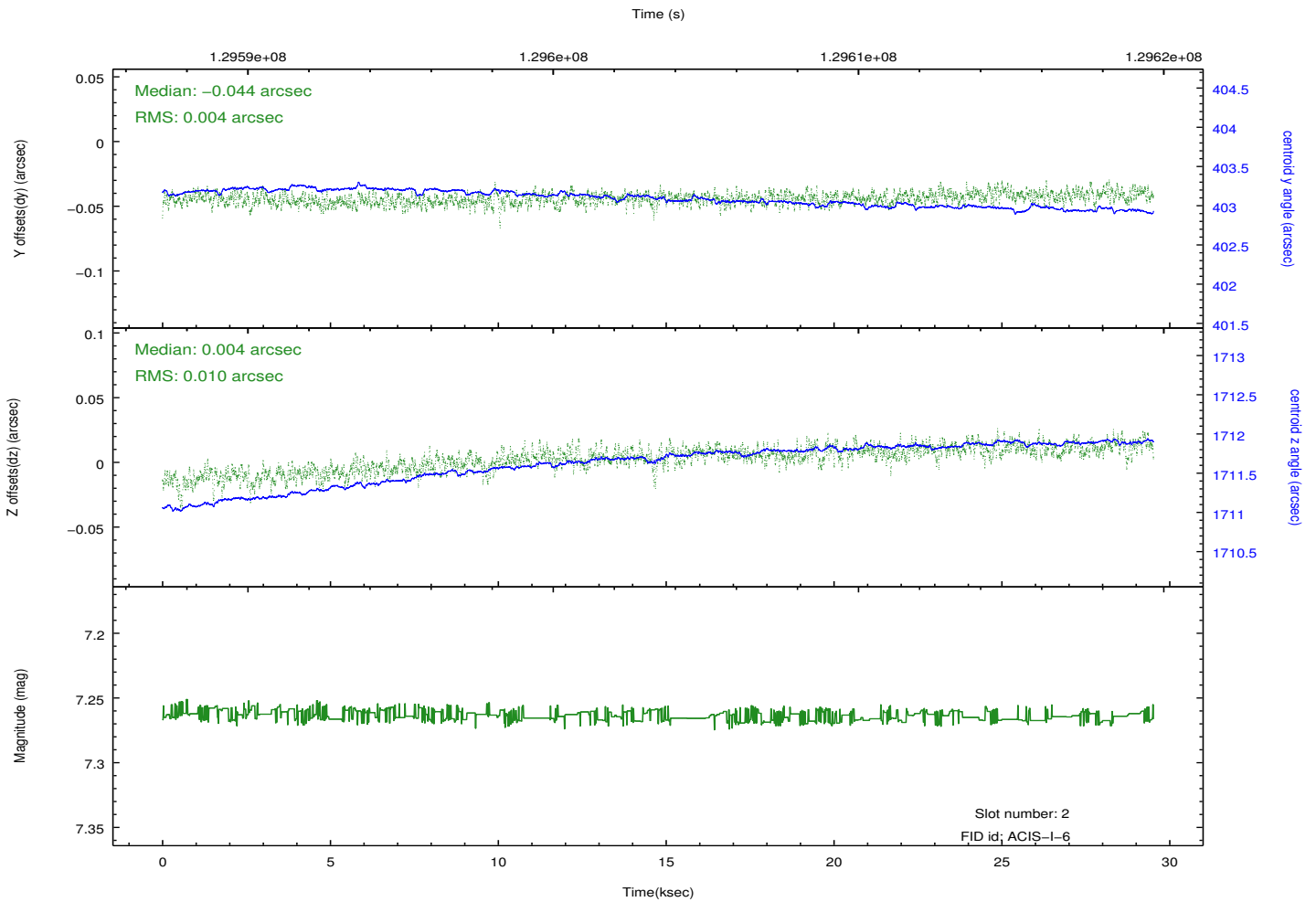
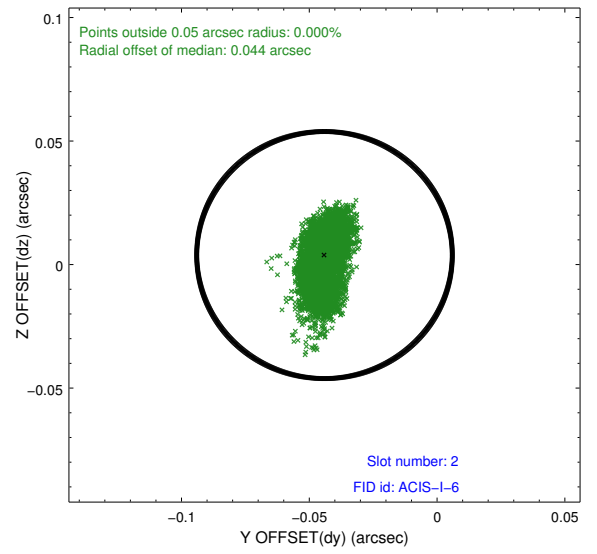
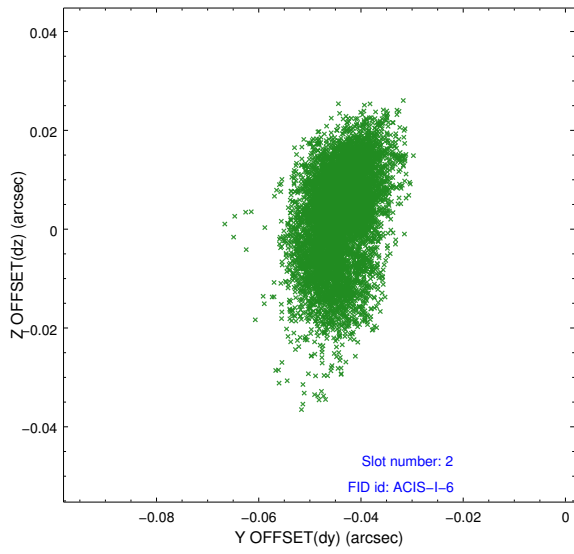
2.5.1 Slot 0



2.5.2 Slot 1



2.5.3 Slot 2



A Summary

A.1 Status

V&V Scientist	Beth Sundheim
V&V Date (YYYY-MM-DD)	2012.10.04
V&V Edition	1
V&V Disposition and Status	OK
V&V Charge Time	29.161

A.2 Comments