

V&V Reference Report

L2 ASCDS Version : 8.4.5

Observation 2823 - L2 Version 3
Chandra X-Ray Center

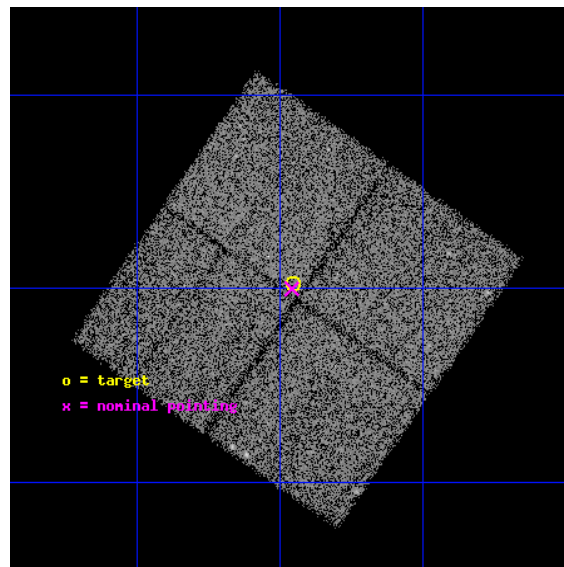
L2 Processing Date : Sep 28 2012

Contents

1	Front	2
2	OBI	3
2.1	OBI	3
2.1.1	Images	3
2.1.2	Bias	3
2.1.3	Parameters	4
2.1.4	Events	4
2.2	Compared Parameters	5
2.3	Aspect	6
2.4	Star Slots	9
2.4.1	Slot 3	9
2.4.2	Slot 4	10
2.4.3	Slot 5	11
2.4.4	Slot 6	12
2.4.5	Slot 7	13
2.5	FID Slots	14
2.5.1	Slot 0	14
2.5.2	Slot 1	15
2.5.3	Slot 2	16
A	Summary	17
A.1	Status	17
A.2	Comments	17

1 Front

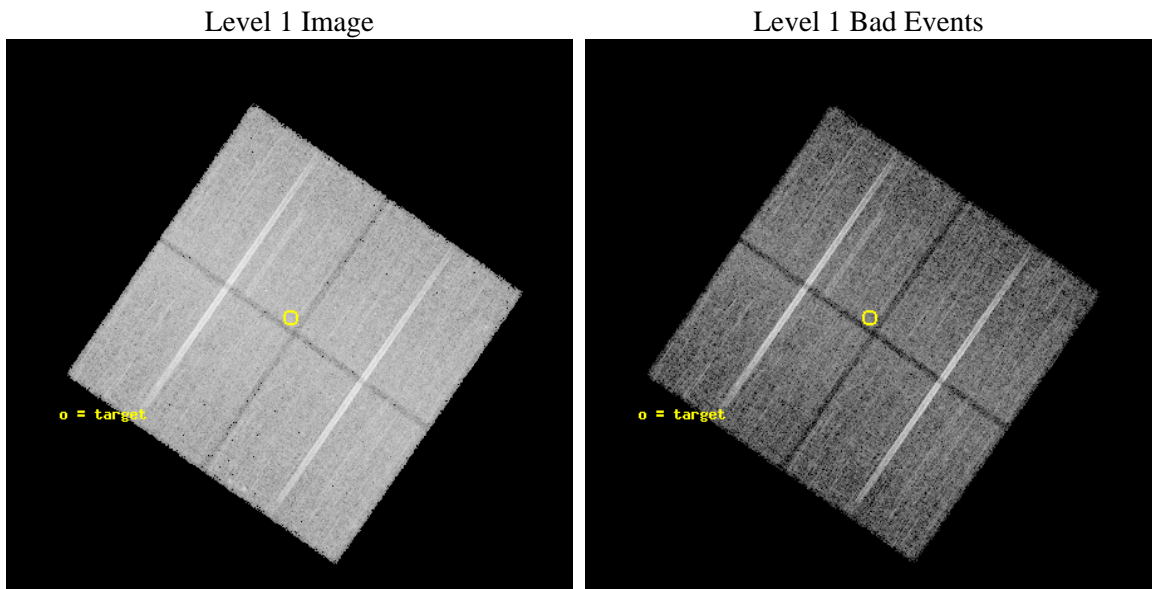
seq_num	500273	Sequence number
obs_id	2823	Observation id
title	LOCALIZATION OF OPTICALLY-DARK GAMMA-RAY BURSTS BY CHANDRA AND HST	
observer	Dr. george Ricker	Principal investigator
object	XRF011130	Source name
dtcycle	0	
cycle	P	events from which exps? Prim/Second/Both
ra_targ	46.36376	Observer's specified target RA [deg]
dec_targ	3.83782	Observer's specified target Dec [deg]
ra_nom	46.36472488618	Nominal RA [deg]
dec_nom	3.8332253959961	Nominal Dec [deg]
roll_nom	304.83967169531	Nominal Roll [deg]
revision	3	Processing version of data
ontime	30166.017981574	Sum of GTIs [s]
livetime	29771.876748745	Livetime [s]
ontime0	30169.158971742	Sum of GTIs [s]
ontime1	30162.876991406	Sum of GTIs [s]
ontime2	30166.017991483	Sum of GTIs [s]
ontime3	30166.017981574	Sum of GTIs [s]
l2events	83595	Number of level 2 events



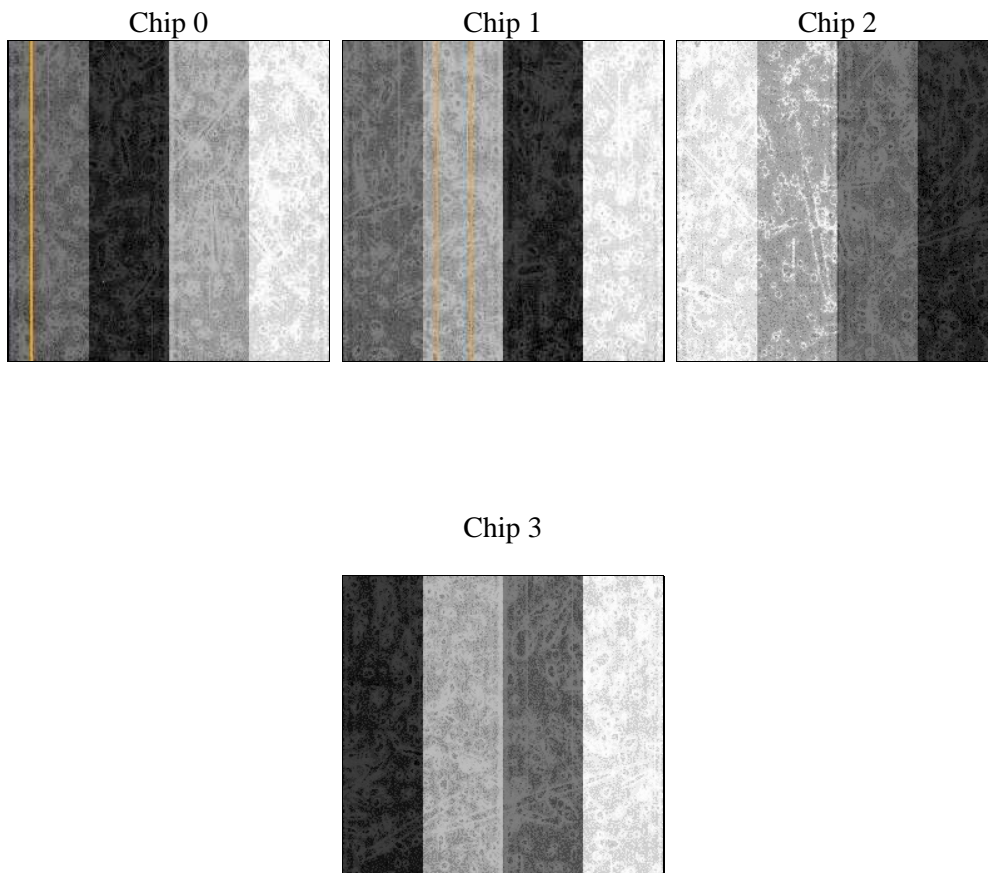
2 OBI

2.1 OBI

2.1.1 Images



2.1.2 Bias



2.1.3 Parameters

obi_num	0	Obi number	sched_exp_time	30000.000000	[s] Scheduled observation exposure time
ascdsver	8.4.5	Processing system revision	ontime	30166.017981574	Sum of GTIs [s]
caldsver	4.5.2	 	ontime0	30169.158971742	Sum of GTIs [s]
date	2012-09-29T00:28:15	Date and time of file creation	ontime1	30162.876991406	Sum of GTIs [s]
revision	3	Processing version of data	ontime2	30166.017991483	Sum of GTIs [s]
			ontime3	30166.017981574	Sum of GTIs [s]
			l1events	764067	Number of level 1 events

2.1.4 Events

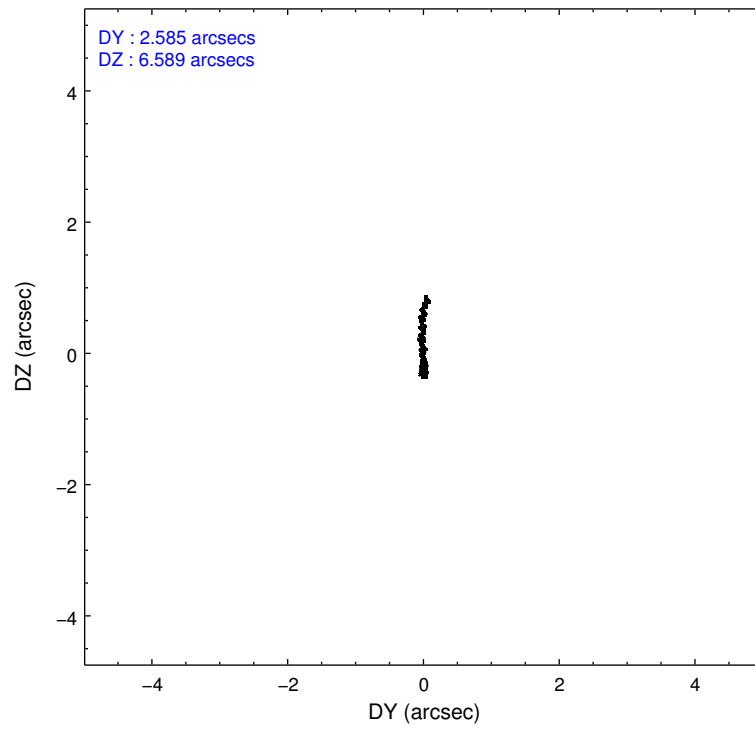
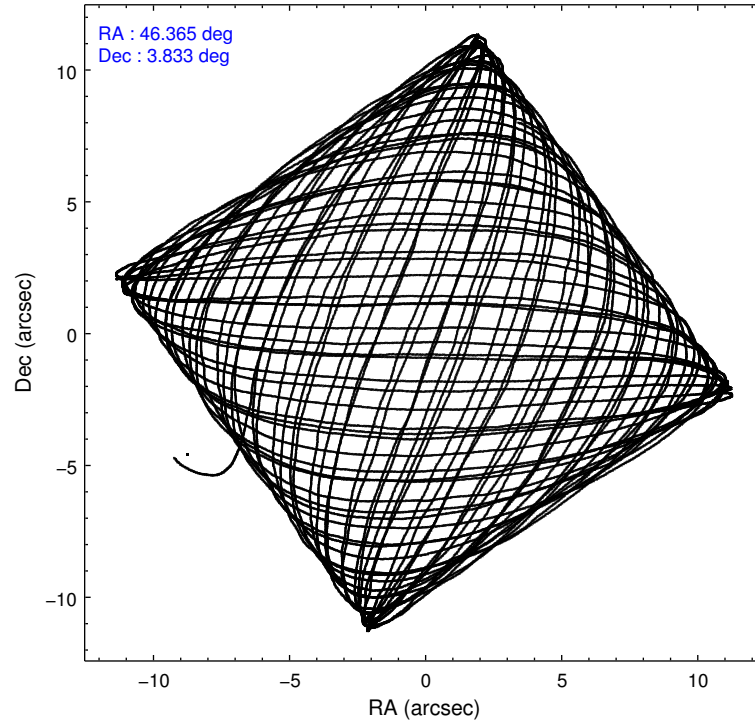
	ccd 0	ccd 1	ccd 2	ccd 3
level 1 events	182125	183818	197884	200240
rejected events	157368	158402	174432	176332
rejected %	86%	86%	88%	88%

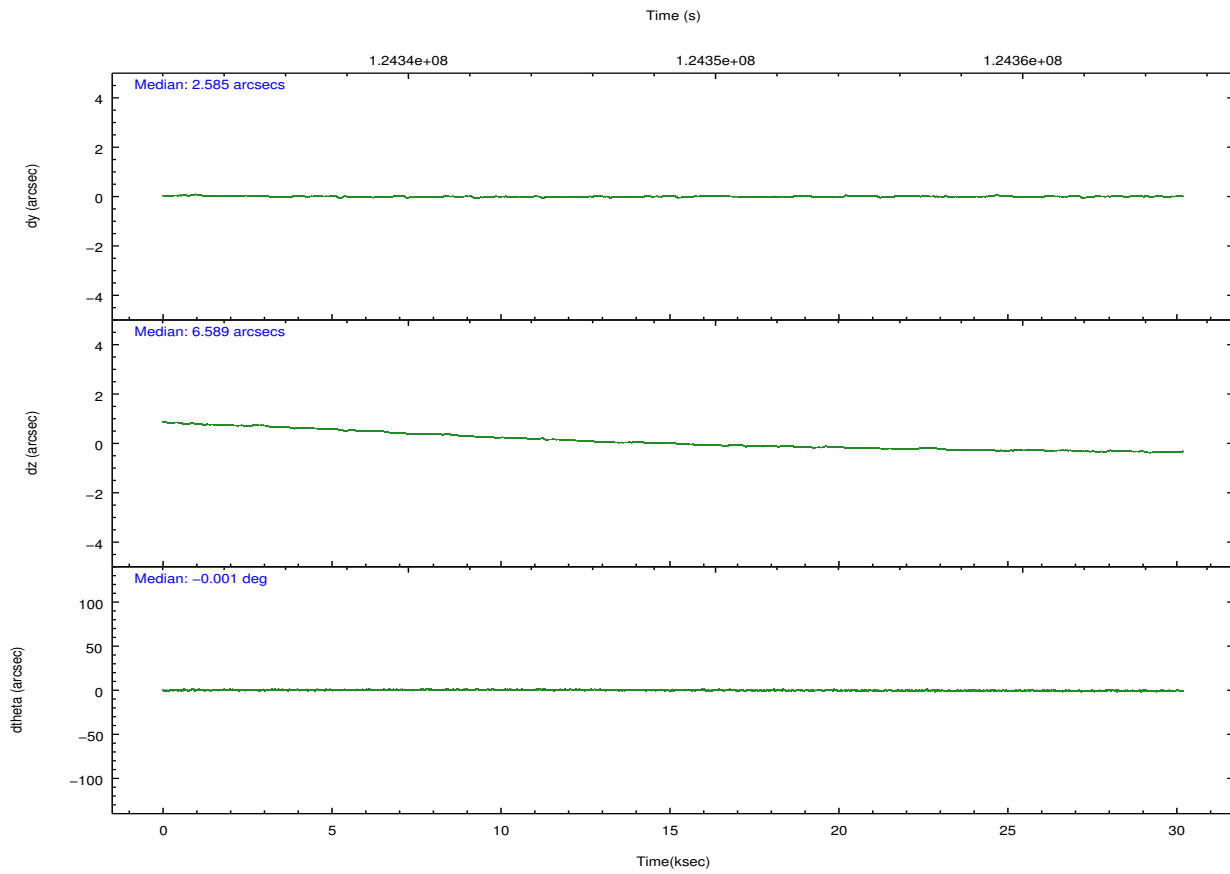
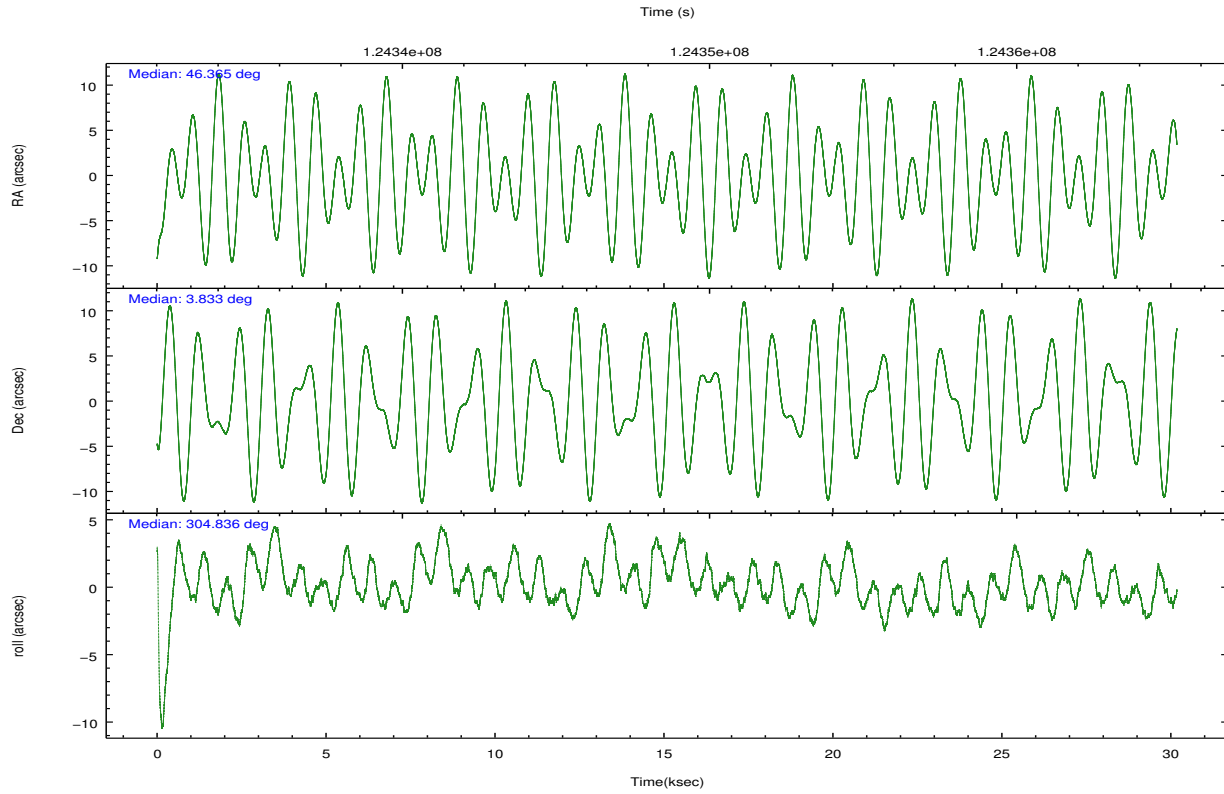
	ccd 0	ccd 1	ccd 2	ccd 3
grade 0 events	11154	10798	10626	10816
	6%	5%	5%	5%
grade 1 events	105	89	98	102
	0%	0%	0%	0%
grade 2 events	5168	5165	4993	4763
	2%	2%	2%	2%
grade 3 events	2407	2661	2178	2233
	1%	1%	1%	1%
grade 4 events	2193	2553	2099	2383
	1%	1%	1%	1%
grade 5 events	7282	7840	6953	7891
	3%	4%	3%	3%
grade 6 events	4322	4723	4016	4179
	2%	2%	2%	2%
grade 7 events	149494	149989	166921	167873
	82%	81%	84%	83%

2.2 Compared Parameters

Parameter	Planned	Actual	Parameter	Planned	Actual
Instrument	ACIS	ACIS	Obspar format version number	7	7
Detector	ACIS-0123	ACIS-0123	Obspar file type	PREDICTED	ACTUAL
Grating	NONE	NONE	Obspar update status	NONE	UPDATED
Data mode	VFAINT	VFAINT	Number of optional ACIS chips dropped	0	0
Observation mode	POINTING	POINTING	On-chip summing requested	N	N
[deg] Pointing RA	46.339832	46.36472488617959	Subarray requested	NONE	NONE
[deg] Pointing Dec	3.844826	3.833225395996121	Alternating exposures requested	N	N
[deg] Pointing Roll	304.632654	304.8396716953071	[s] Primary exposure time	0.000000	3.1
[mm] SIM focus pos	-0.782348	-0.7809083437167272			
[mm] SIM defocus	0	0.001439871863259334			
[mm] SIM translation stage pos	-233.592463	-233.5874344608287			
[mm] SIM translation stage offset	0	-0.005018542100998502			
[s] Observation start time (MET)	124333708.184000	124332592.58576			
Observation start date	2001-12-10T01:07:24	2001-12-10T00:49:52			
[s] Observation end time (MET)	124363708.184000	124364617.17455			
Observation end date	2001-12-10T09:27:24	2001-12-10T09:43:37			
Read mode	TIMED	TIMED			

2.3 Aspect



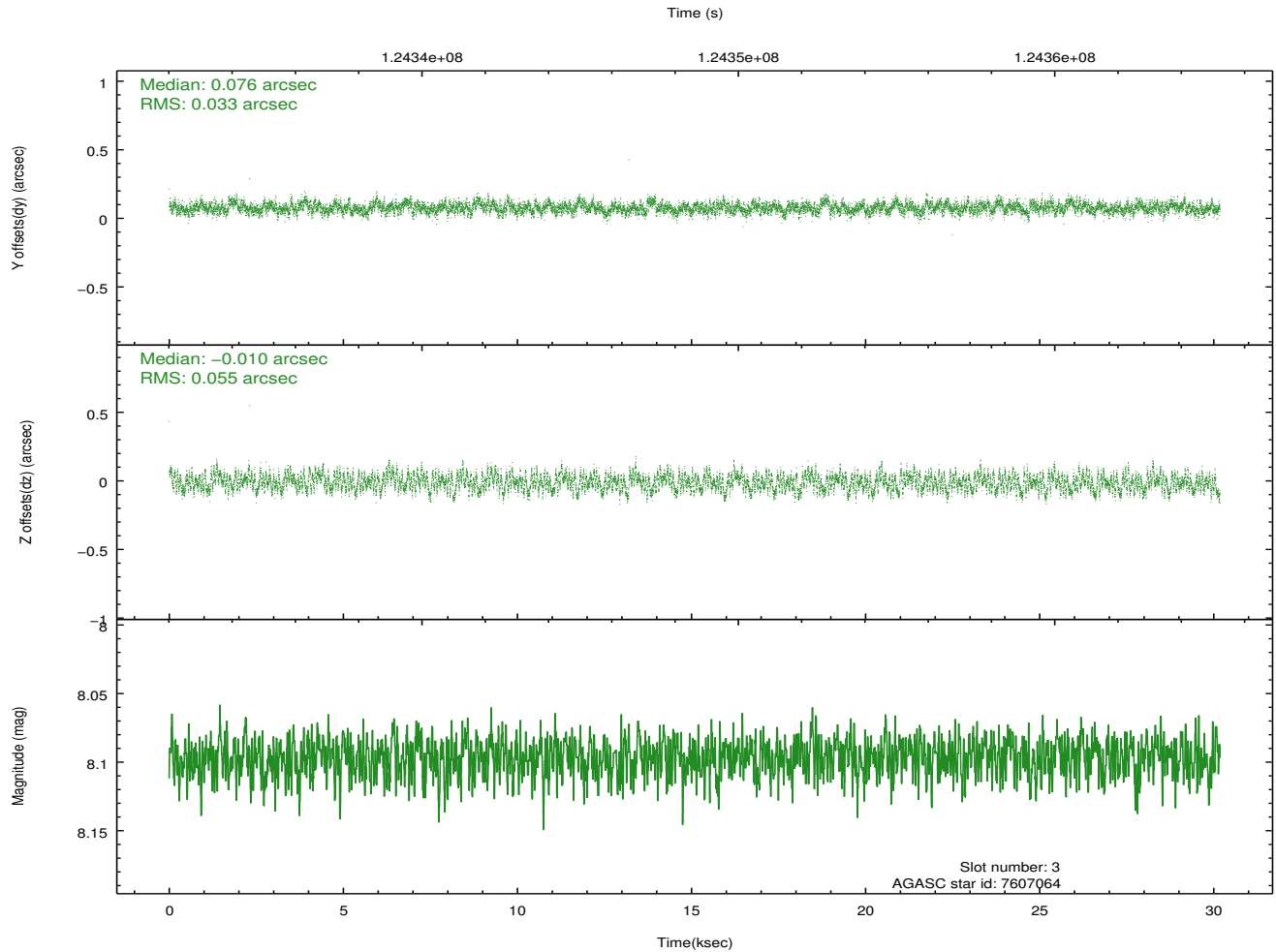
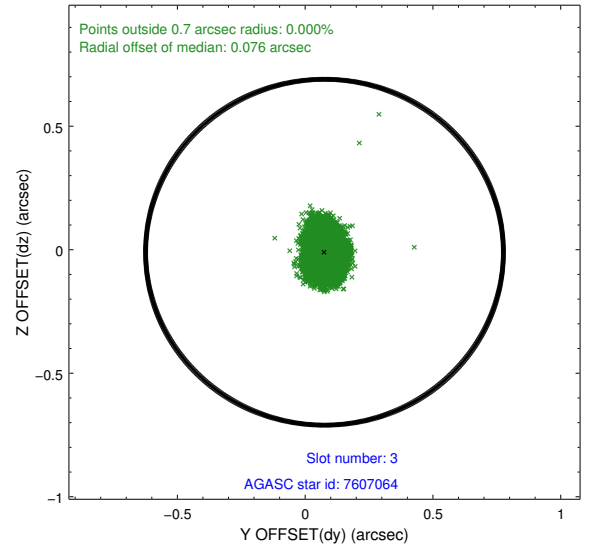
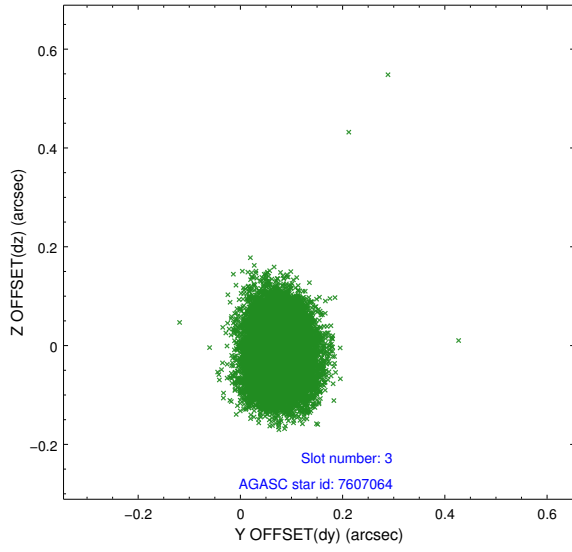


Slot Statistics

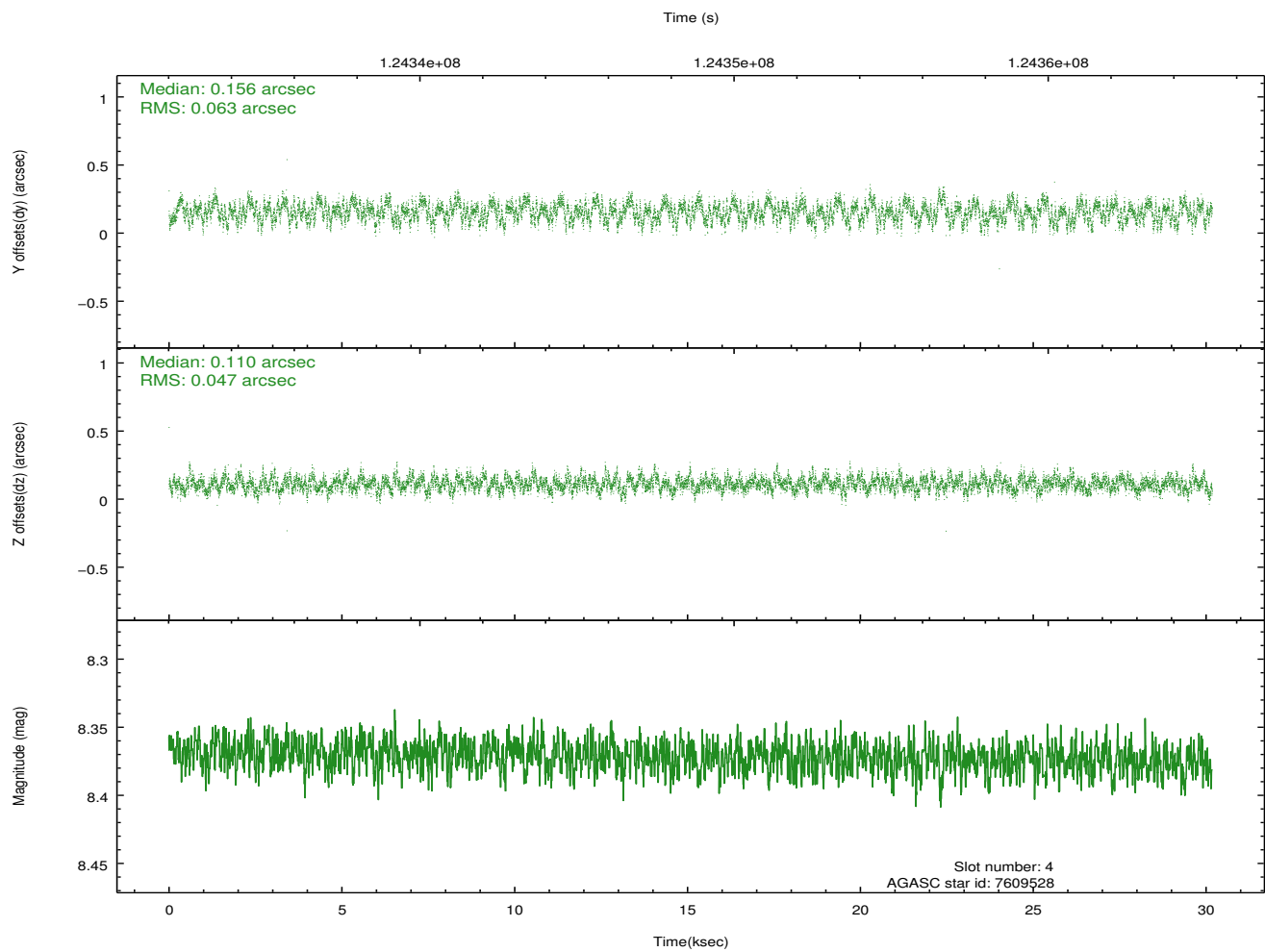
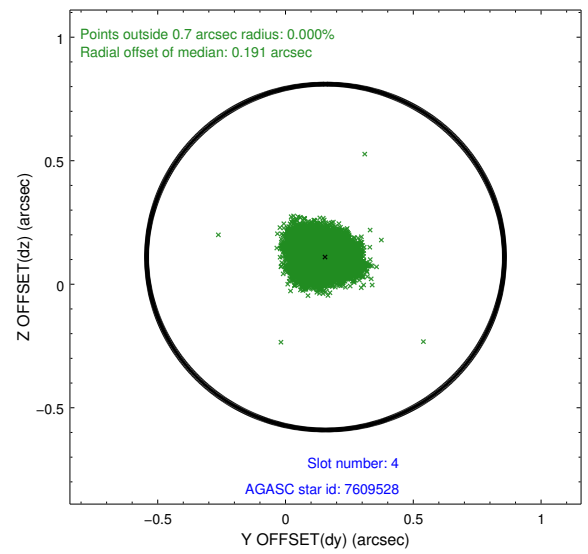
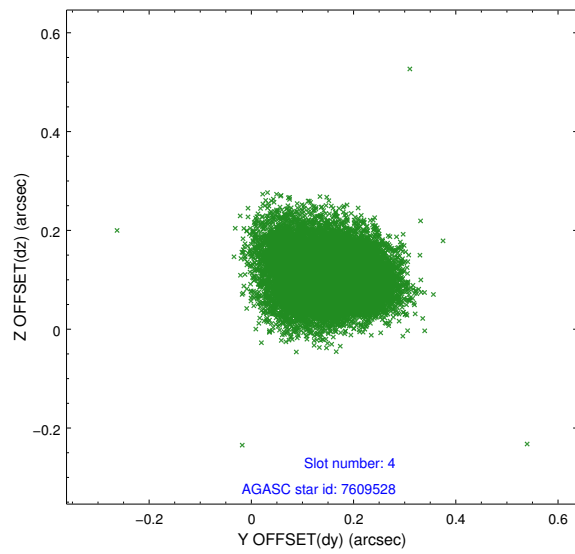
slot	status	id	mag	n_pts	med_dy	med_dz	dr1	dr2	ra	dec	mean_y	mean_z
0	FID	ACIS-I-1	7.25	7358	-0.008	0.015	0.010	0.022	0.000000	0.000000	937.19	-830.07
1	FID	ACIS-I-5	7.24	7359	-0.040	0.046	0.007	0.012	0.000000	0.000000	-1810.87	1067.47
2	FID	ACIS-I-6	7.26	7360	-0.043	0.009	0.013	0.025	0.000000	0.000000	402.67	1711.97
3	GUIDE	7607064	8.10	14721	0.076	-0.010	0.068	0.110	46.593930	3.810123	620.66	680.00
4	GUIDE	7609528	8.37	14719	0.156	0.110	0.085	0.135	46.606589	3.264522	2263.20	-398.19
5	GUIDE	7608464	9.15	14713	-0.040	-0.008	0.076	0.124	46.255189	4.465600	-2012.18	1019.87
6	GUIDE	7608696	9.35	14710	-0.158	-0.013	0.084	0.132	45.596169	3.951068	-1834.55	-1979.82
7	GUIDE	7608616	9.33	14712	-0.031	-0.073	0.110	0.177	45.692225	3.630702	-689.53	-2352.32

2.4 Star Slots

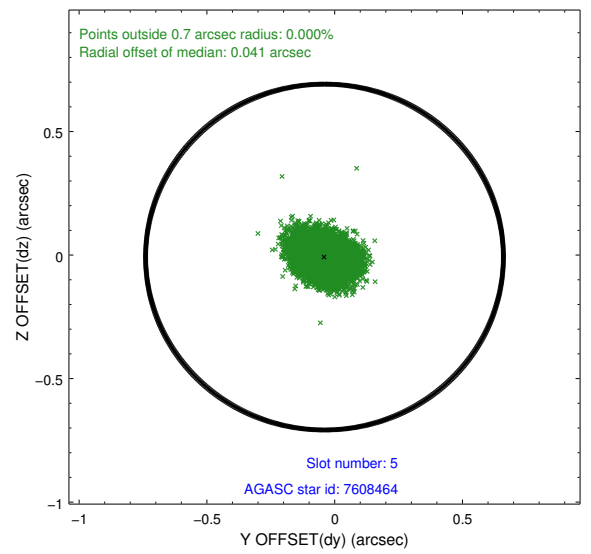
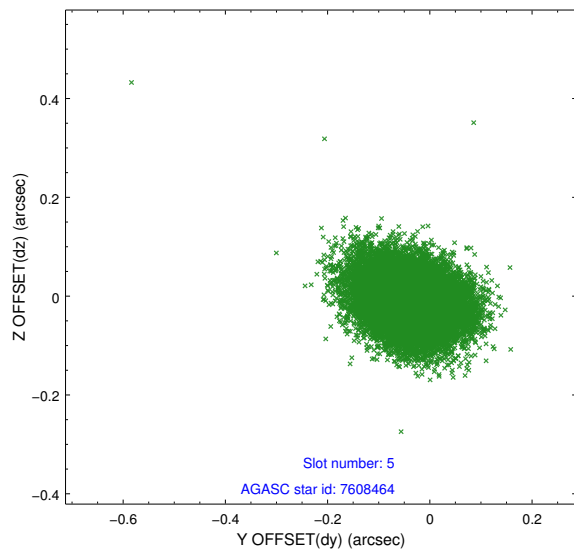
2.4.1 Slot 3



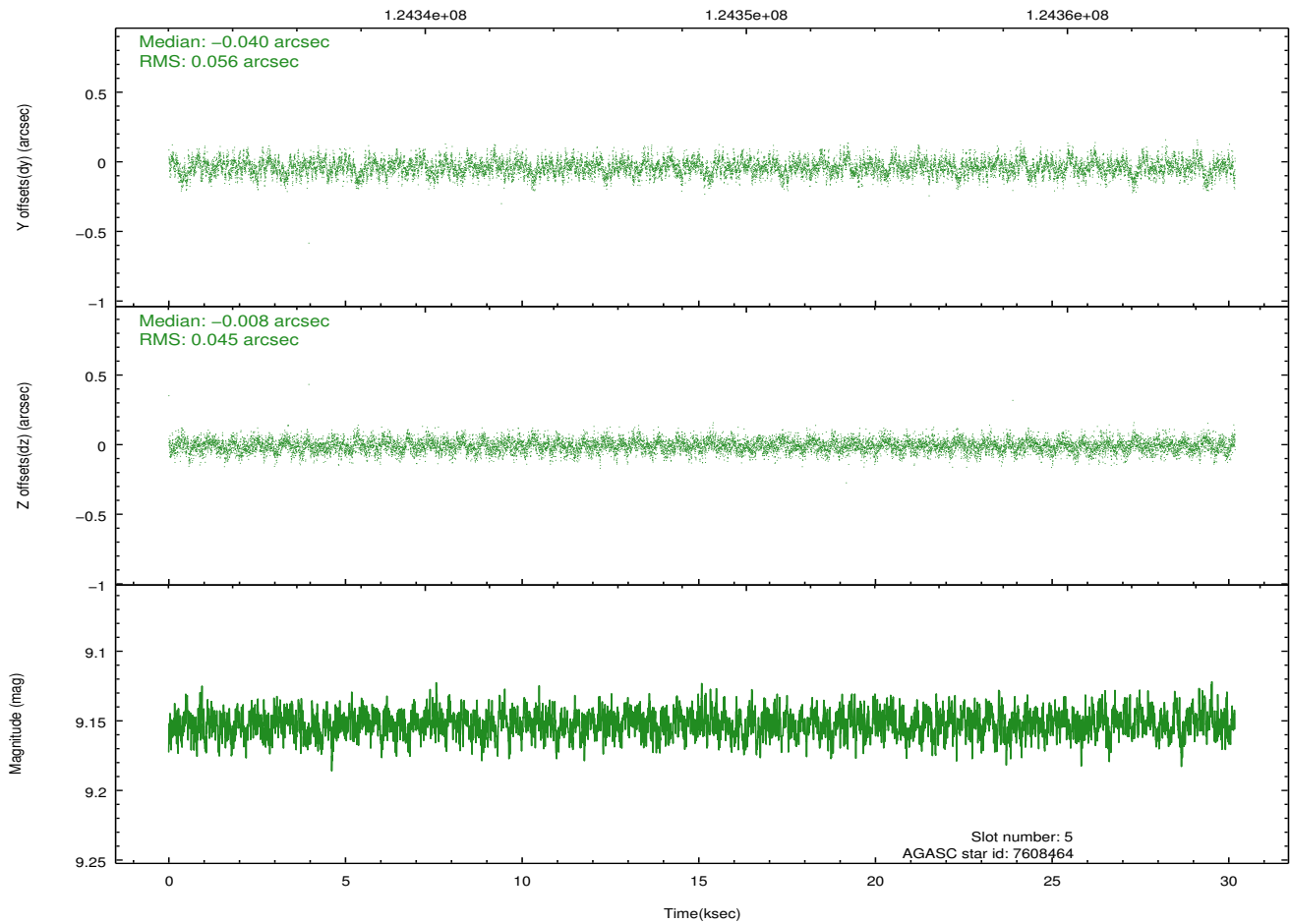
2.4.2 Slot 4



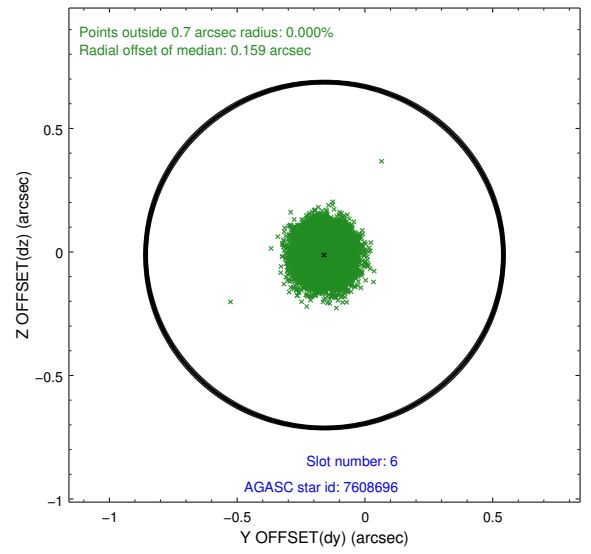
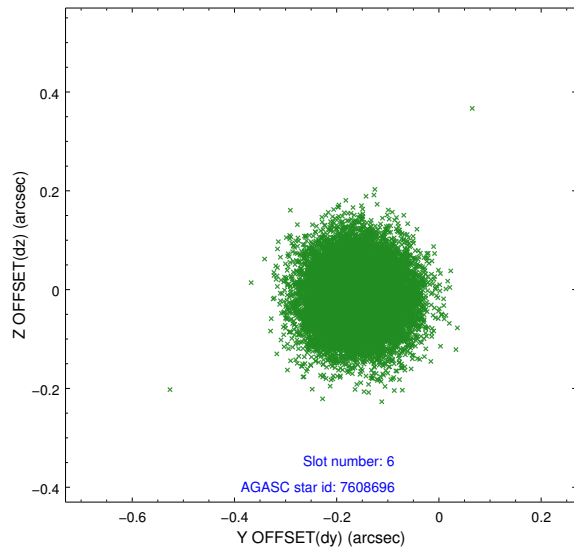
2.4.3 Slot 5



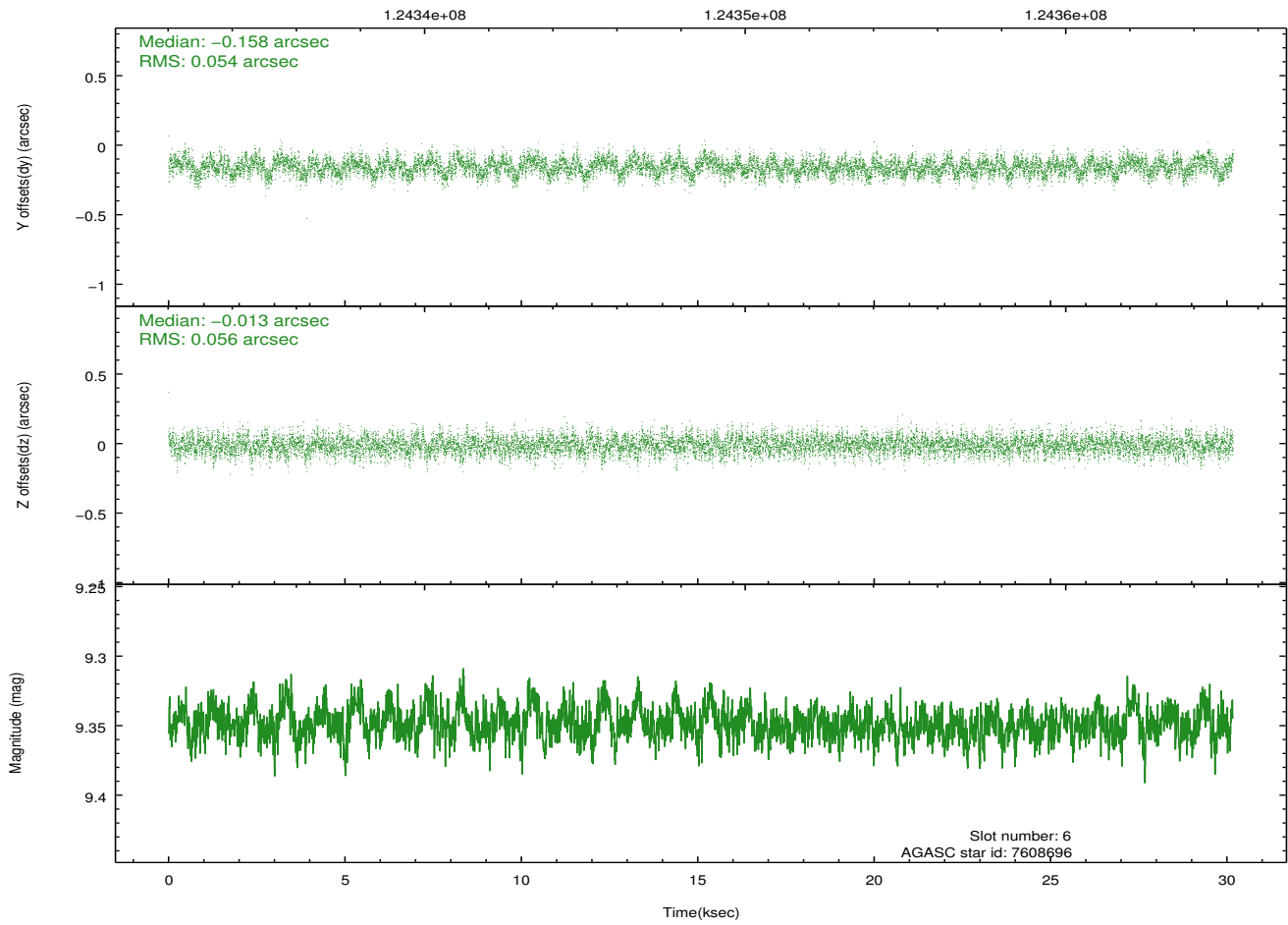
Time (s)



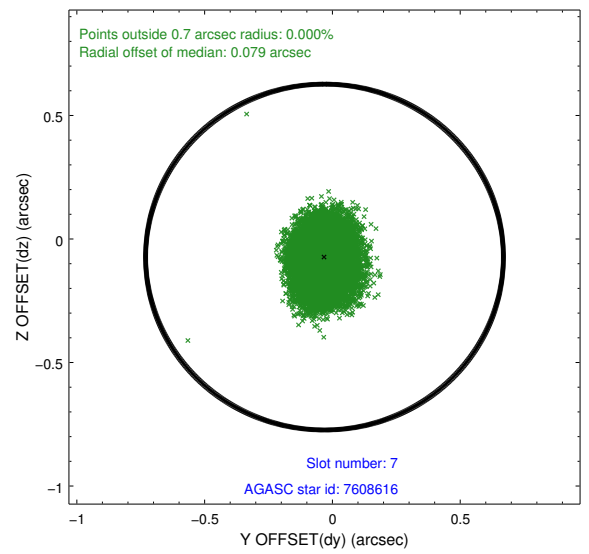
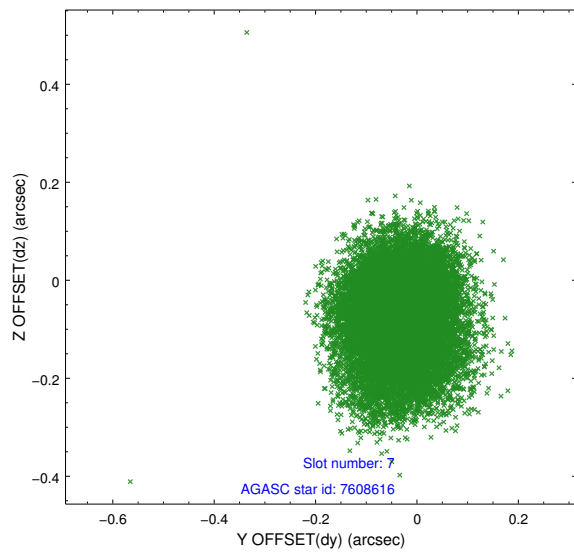
2.4.4 Slot 6



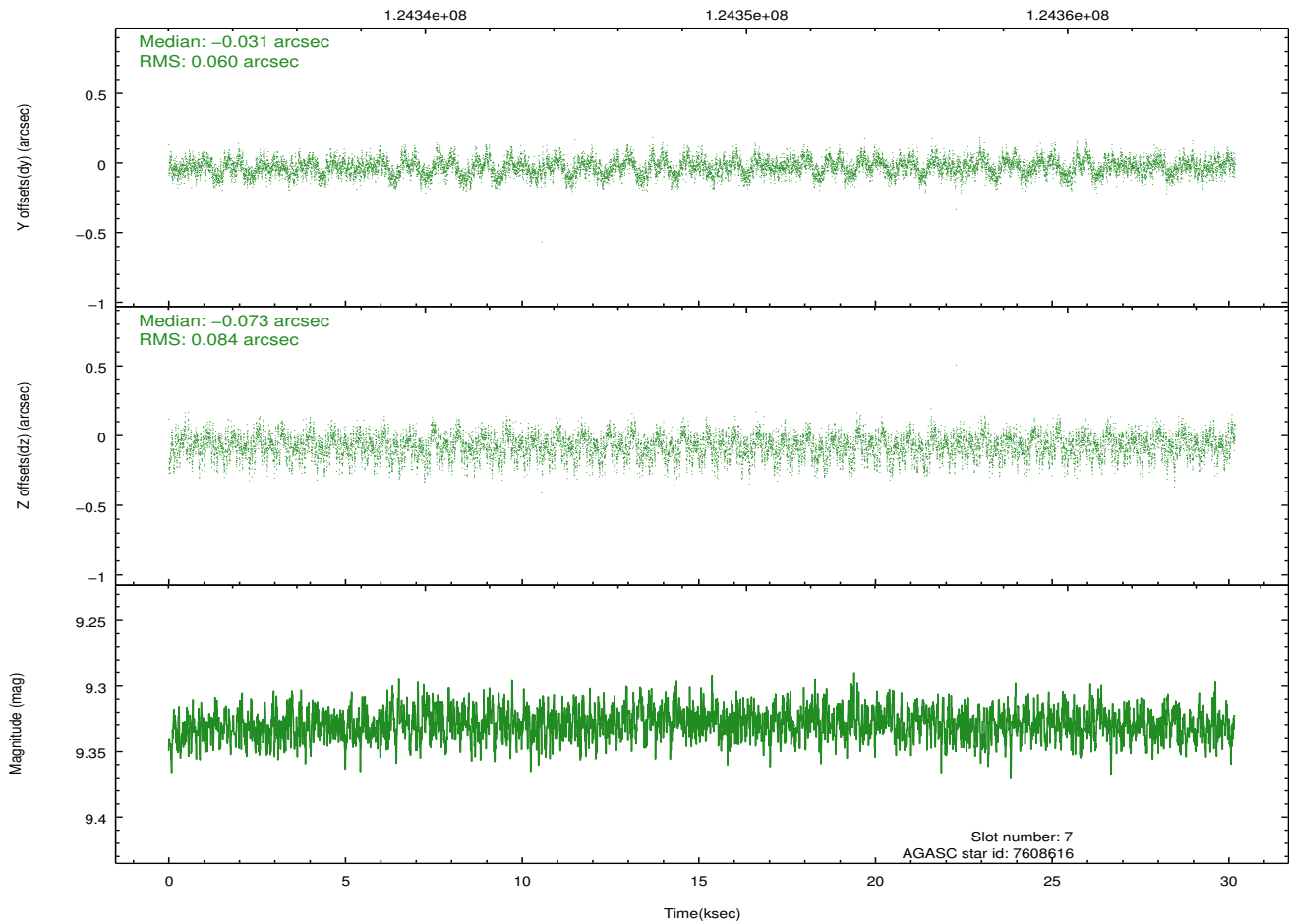
Time (s)



2.4.5 Slot 7

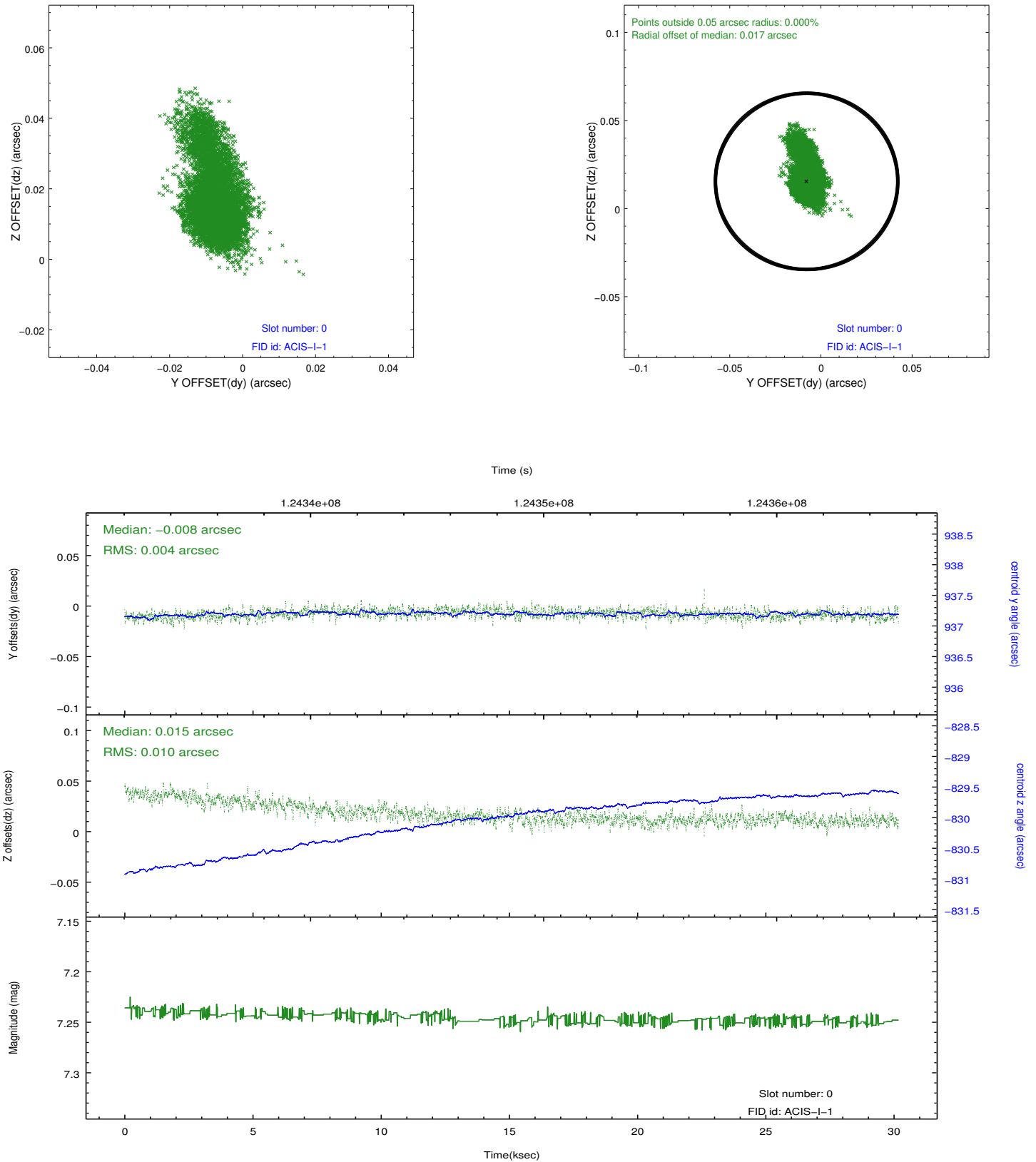


Time (s)

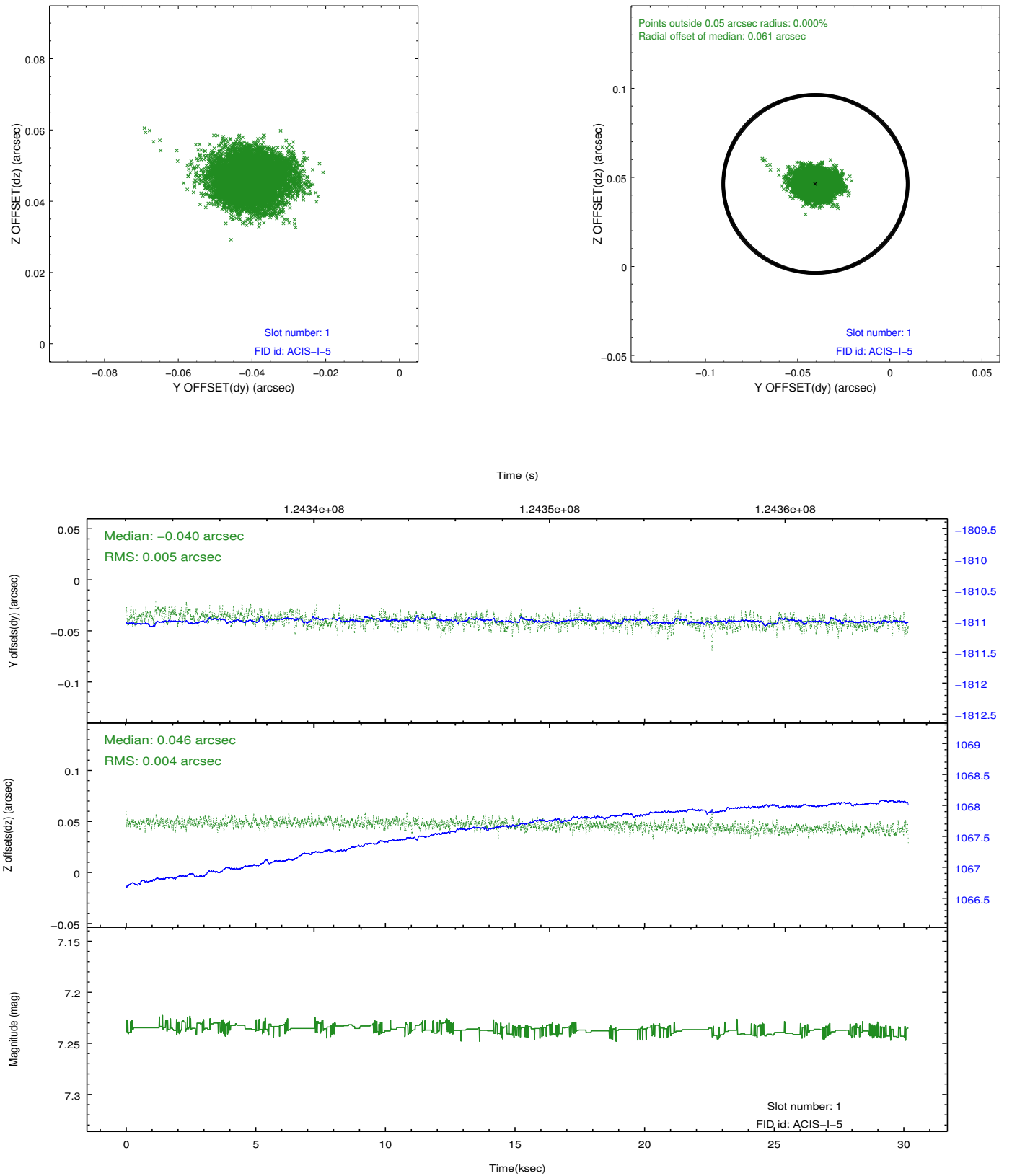


2.5 FID Slots

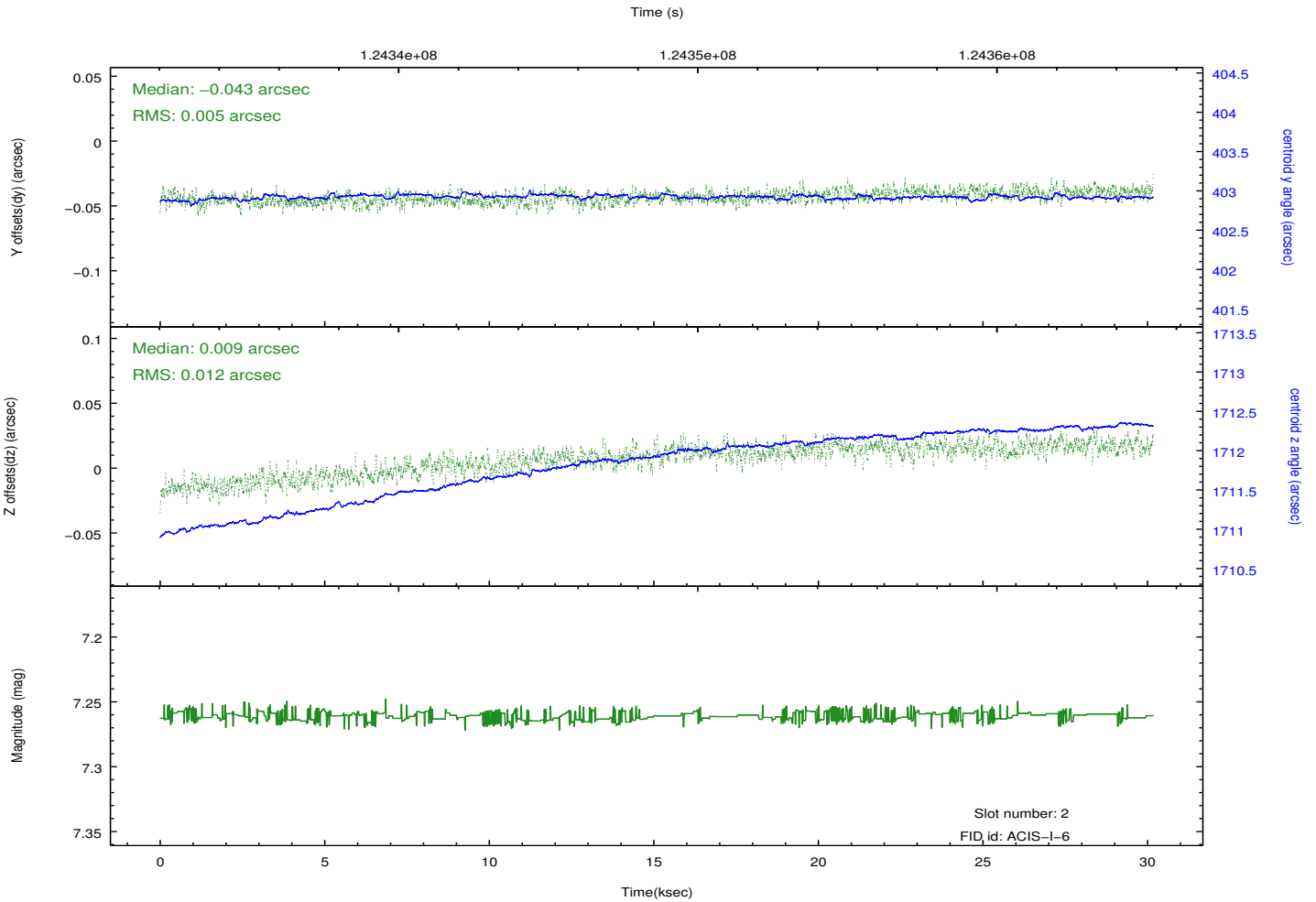
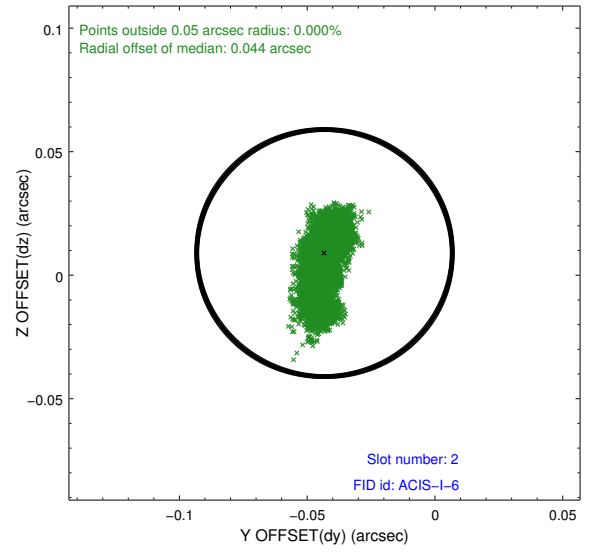
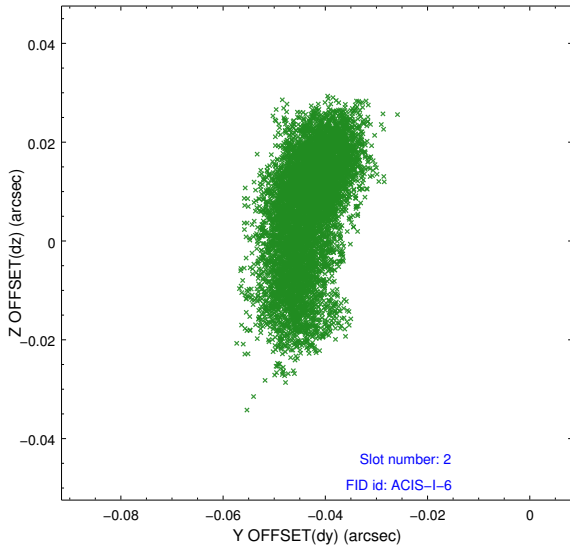
2.5.1 Slot 0



2.5.2 Slot 1



2.5.3 Slot 2



A Summary

A.1 Status

V&V Scientist	Beth Sundheim
V&V Date (YYYY-MM-DD)	2012.10.01
V&V Edition	1
V&V Disposition and Status	OK
V&V Charge Time	30.166

A.2 Comments

Joint proposal with HST.