

V&V Reference Report

L2 ASCDS Version : 8.4.5

Observation 3193 - L2 Version 3
Chandra X-Ray Center

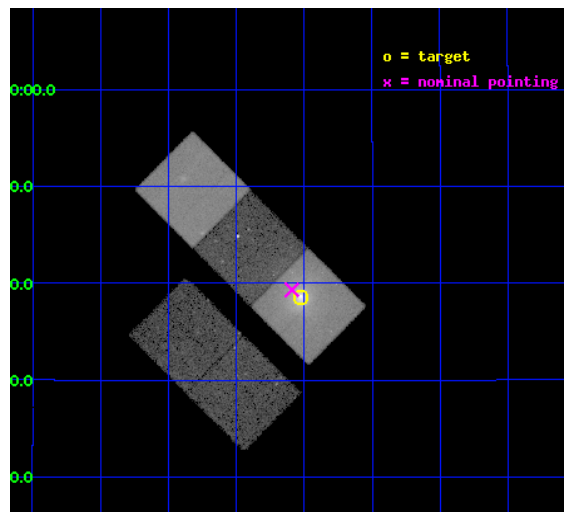
L2 Processing Date : Oct 19 2012

Contents

1	Front	2
2	OBI	3
2.1	OBI	3
2.1.1	Images	3
2.1.2	Bias	3
2.1.3	Parameters	4
2.1.4	Events	4
2.2	Compared Parameters	5
2.3	Aspect	6
2.4	Star Slots	9
2.4.1	Slot 3	9
2.4.2	Slot 4	10
2.4.3	Slot 5	11
2.4.4	Slot 6	12
2.4.5	Slot 7	13
2.5	FID Slots	14
2.5.1	Slot 0	14
2.5.2	Slot 1	15
2.5.3	Slot 2	16
A	Summary	17
A.1	Status	17
A.2	Comments	17

1 Front

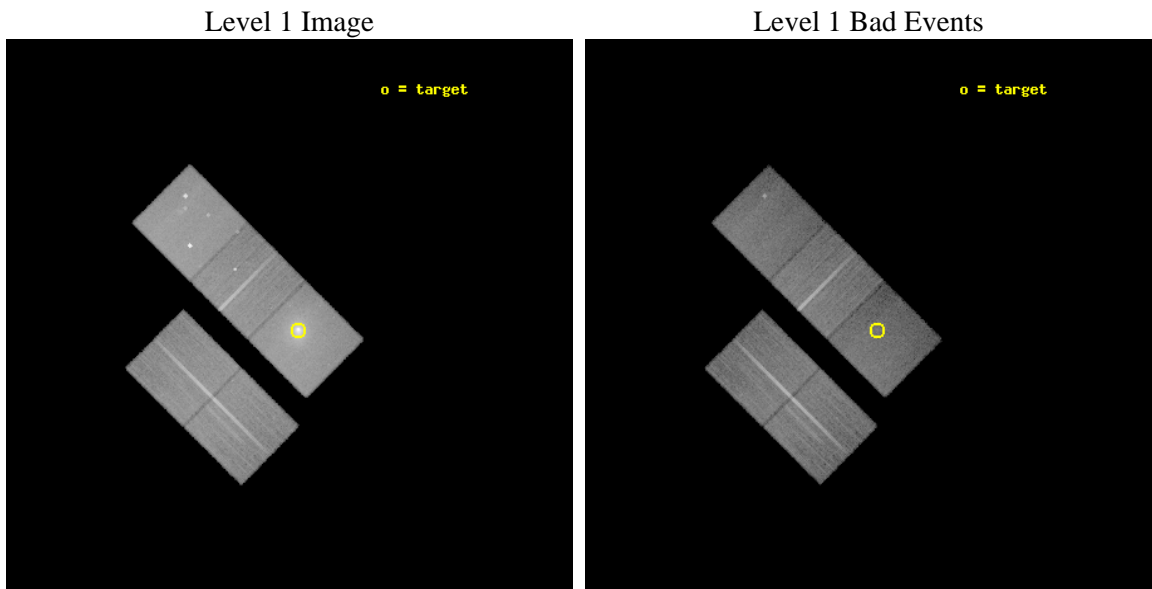
seq_num	800193	Sequence number
obs_id	3193	Observation id
title	THE FATE OF MATTER IN THE MODERATE COOLING FLOW CLUSTER ABELL 1991	
observer	Prof. Brian McNamara	Principal investigator
object	ABELL 1991	Source name
dtcycle	0	
cycle	P	events from which exps? Prim/Second/Both
ra_targ	223.63125	Observer's specified target RA [deg]
dec_targ	18.642222	Observer's specified target Dec [deg]
ra_nom	223.64797740933	Nominal RA [deg]
dec_nom	18.655586708124	Nominal Dec [deg]
roll_nom	44.896729526397	Nominal Roll [deg]
revision	3	Processing version of data
ontime	38811.755238354	Sum of GTIs [s]
livetime	38304.651083367	Livetime [s]
ontime2	38802.168137848	Sum of GTIs [s]
ontime3	38805.350237668	Sum of GTIs [s]
ontime5	38811.714198351	Sum of GTIs [s]
ontime6	38811.673158348	Sum of GTIs [s]
ontime7	38811.755238354	Sum of GTIs [s]
l2events	366538	Number of level 2 events



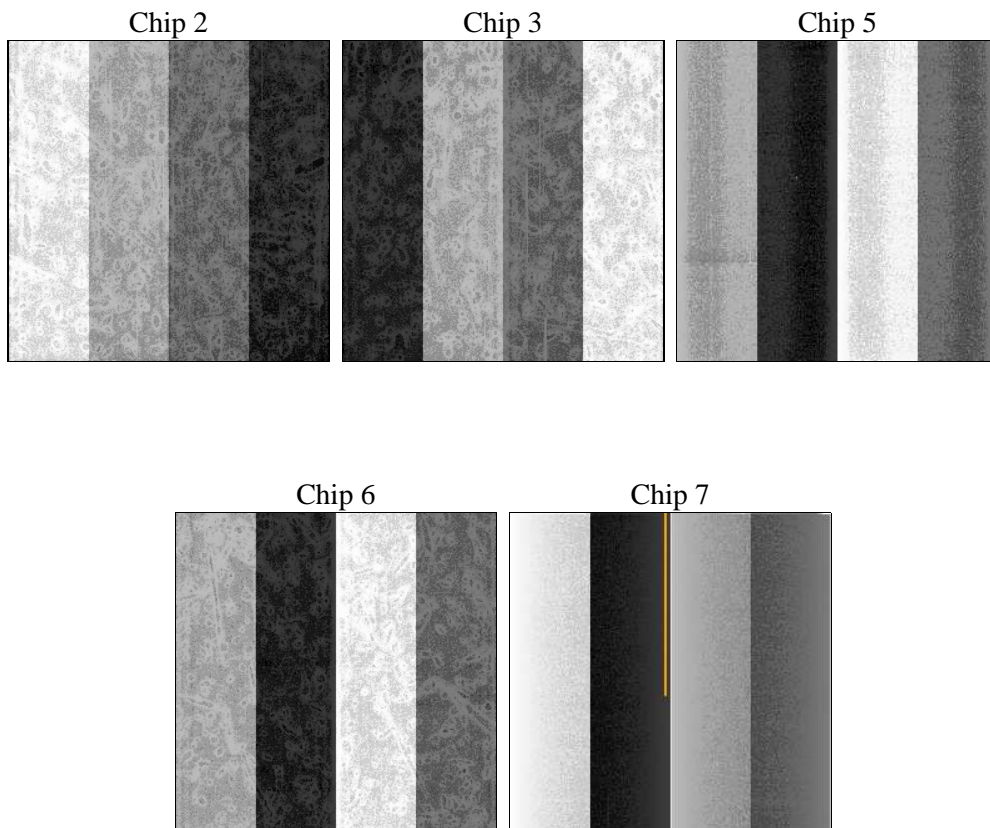
2 OBI

2.1 OBI

2.1.1 Images



2.1.2 Bias



2.1.3 Parameters

obi_num	0	Obi number	sched_exp_time	38706.000000	[s] Scheduled observation exposure time
ascdsver	8.4.5	Processing system revision	ontime	38811.755238354	Sum of GTIs [s]
caldbver	4.5.2	 	ontime2	38802.168137848	Sum of GTIs [s]
date	2012-10-19T09:11:00	Date and time of file creation	ontime3	38805.350237668	Sum of GTIs [s]
revision	3	Processing version of data	ontime5	38811.714198351	Sum of GTIs [s]
			ontime6	38811.673158348	Sum of GTIs [s]
			ontime7	38811.755238354	Sum of GTIs [s]
			l1events	1190605	Number of level 1 events

2.1.4 Events

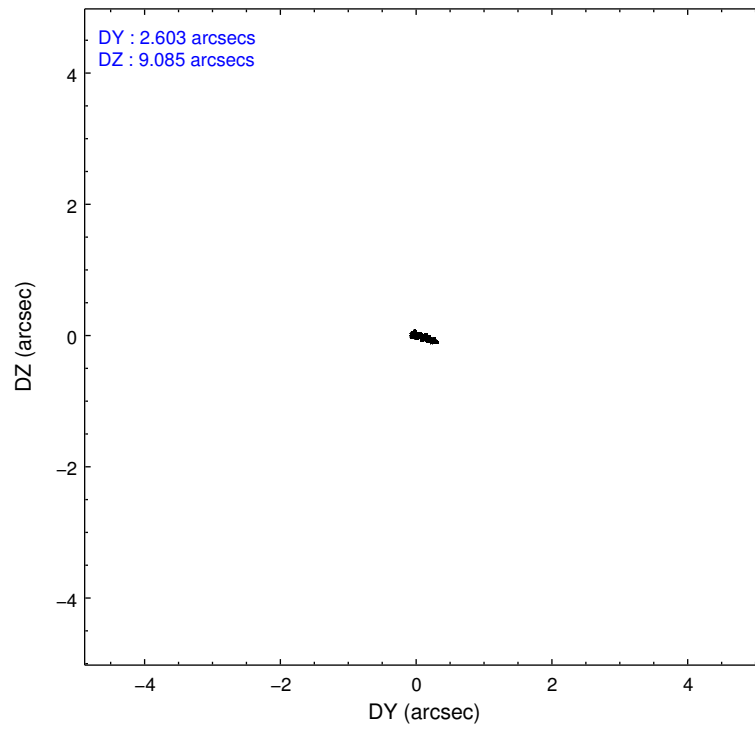
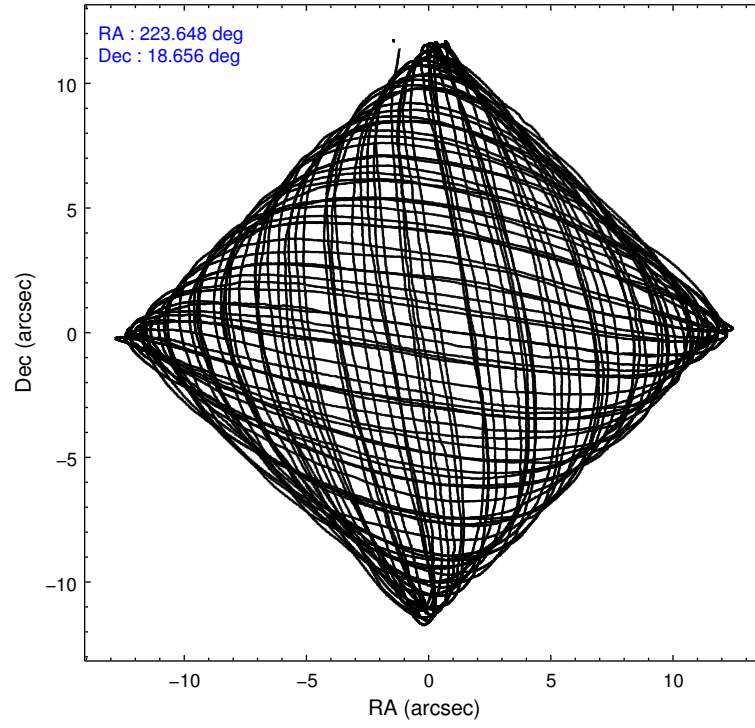
	ccd 2	ccd 3	ccd 5	ccd 6	ccd 7
level 1 events	203277	198711	275303	206311	307003
rejected events	183340	179574	132206	178661	118271
rejected %	90%	90%	48%	86%	38%

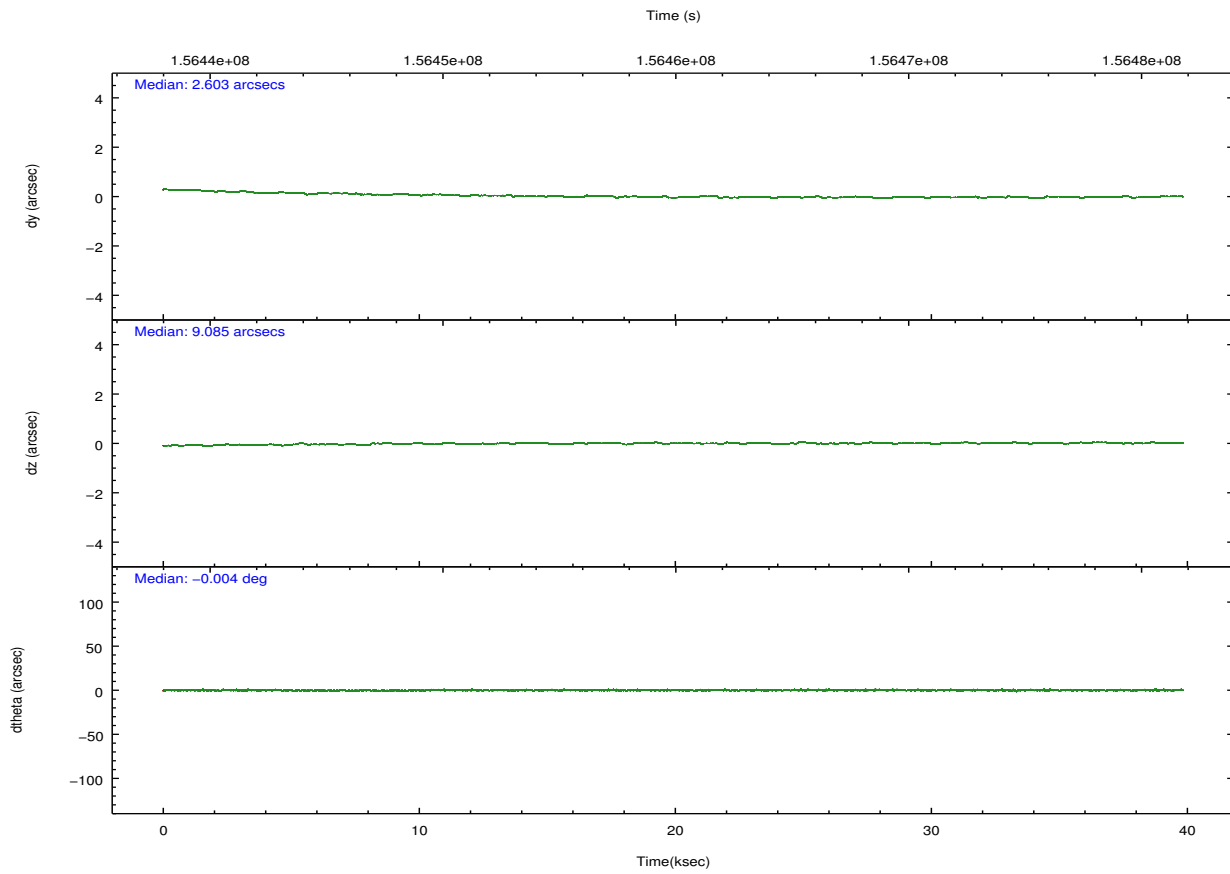
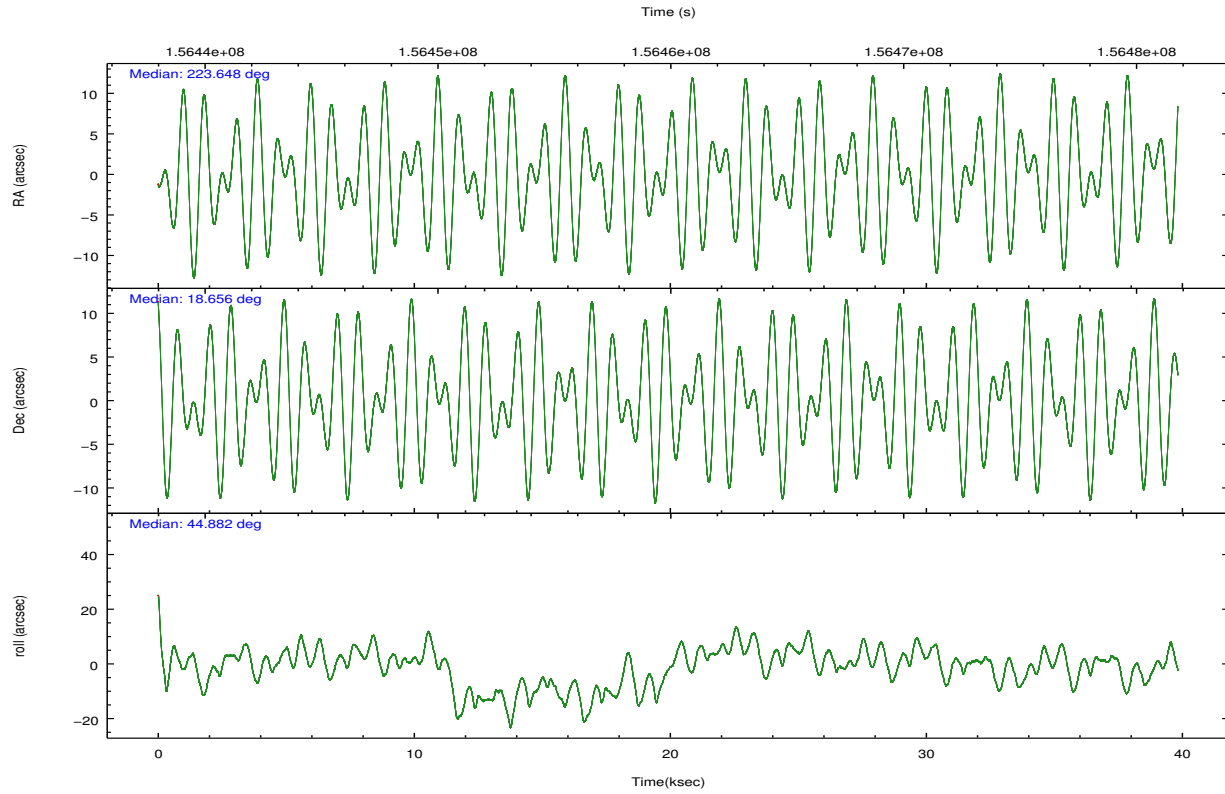
	ccd 2	ccd 3	ccd 5	ccd 6	ccd 7
grade 0 events	7595	7254	26435	13180	40336
	3%	3%	9%	6%	13%
grade 1 events	99	100	1057	114	210
	0%	0%	0%	0%	0%
grade 2 events	4433	3896	37656	5072	43164
	2%	1%	13%	2%	14%
grade 3 events	2272	2210	6509	2554	19943
	1%	1%	2%	1%	6%
grade 4 events	2222	2210	6492	2396	19760
	1%	1%	2%	1%	6%
grade 5 events	6425	7417	21438	7865	23491
	3%	3%	7%	3%	7%
grade 6 events	3419	3569	66028	4454	65558
	1%	1%	23%	2%	21%
grade 7 events	176812	172055	109688	170676	94541
	86%	86%	39%	82%	30%

2.2 Compared Parameters

Parameter	Planned	Actual	Parameter	Planned	Actual
Instrument	ACIS	ACIS	Obspar format version number	7	7
Detector	ACIS-23567	ACIS-23567	Obspar file type	PREDICTED	ACTUAL
Grating	NONE	NONE	Obspar update status	NONE	UPDATED
Data mode	VFAINT	VFAINT	Number of optional ACIS chips dropped	0	0
Observation mode	POINTING	POINTING	On-chip summing requested	N	N
[deg] Pointing RA	223.640893	223.647977409329	Subarray requested	NONE	NONE
[deg] Pointing Dec	18.629224	18.65558670812394	Alternating exposures requested	N	N
[deg] Pointing Roll	44.742363	44.89672952639713	[s] Primary exposure time	0.000000	3.1
[mm] SIM focus pos	-0.684267	-0.6828225247311905			
[mm] SIM defocus	0	0.001444936568705701			
[mm] SIM translation stage pos	-190.132523	-190.1425803651734			
[mm] SIM translation stage offset	0	0.01005778216563158			
[s] Observation start time (MET)	156441087.184000	156439659.04937			
Observation start date	2002-12-16T15:50:23	2002-12-16T15:27:39			
[s] Observation end time (MET)	156479793.184000	156480773.33858			
Observation end date	2002-12-17T02:35:29	2002-12-17T02:52:53			
Read mode	TIMED	TIMED			

2.3 Aspect



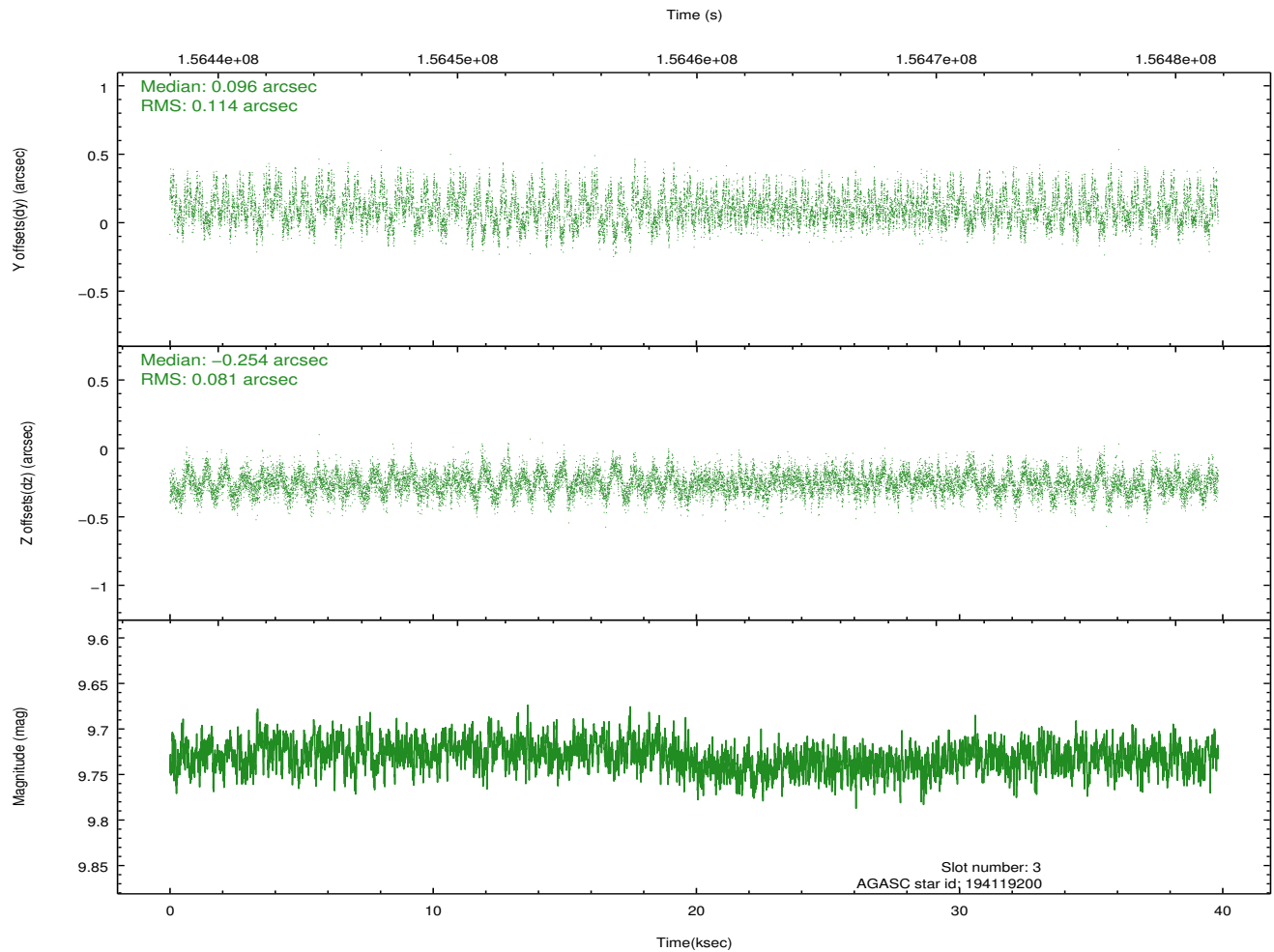
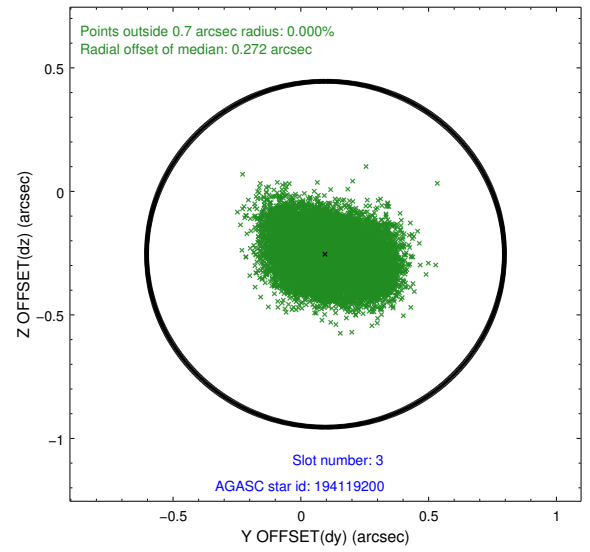
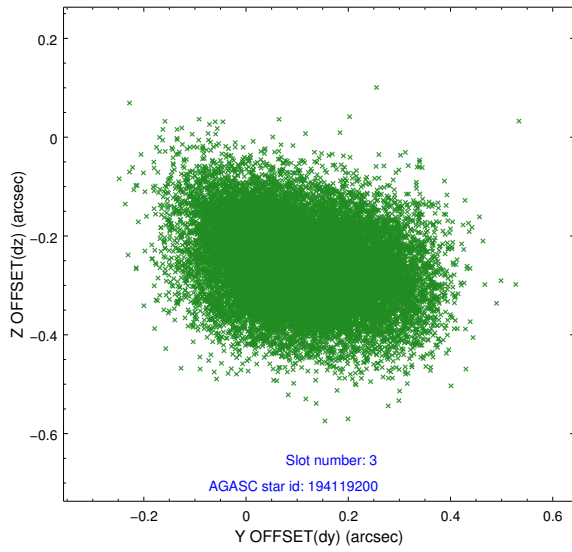


Slot Statistics

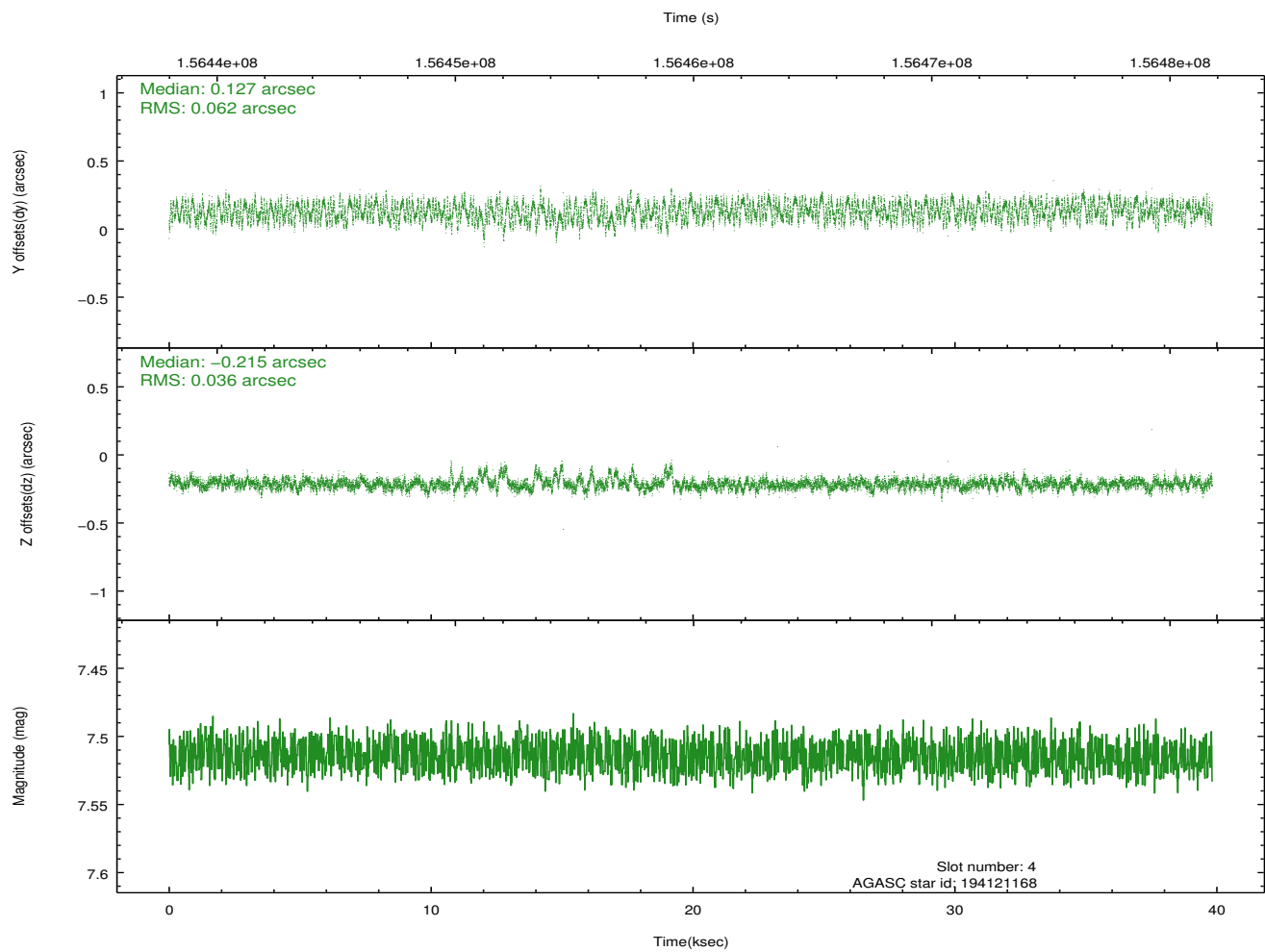
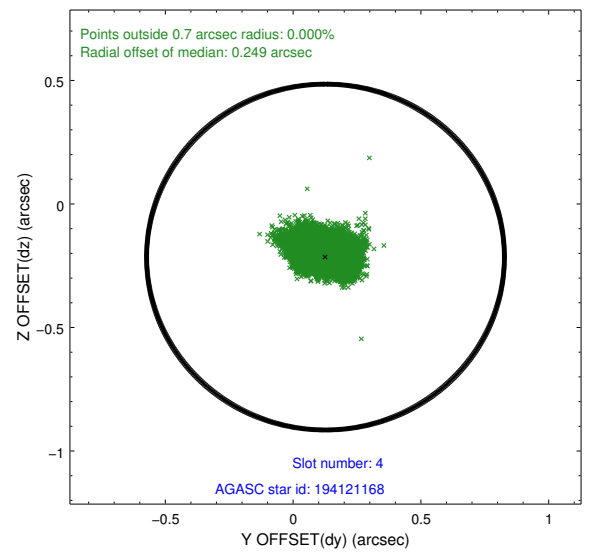
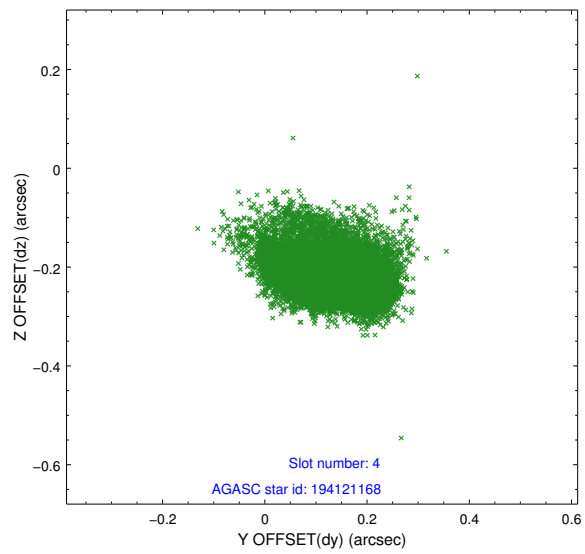
slot	status	id	mag	n_pts	med_dy	med_dz	dr1	dr2	ra	dec	mean_y	mean_z
0	FID	ACIS-S-2	7.10	9715	-0.016	0.005	0.006	0.011	0.000000	0.000000	-755.28	-1730.25
1	FID	ACIS-S-4	7.20	9715	0.007	0.013	0.007	0.011	0.000000	0.000000	2158.01	178.24
2	FID	ACIS-S-6	7.35	9715	-0.018	-0.010	0.007	0.012	0.000000	0.000000	406.71	815.62
3	GUIDE	194119200	9.73	19417	0.096	-0.254	0.149	0.245	222.762059	18.720720	-1891.99	2348.03
4	GUIDE	194121168	7.51	19429	0.127	-0.215	0.076	0.124	222.816765	18.649841	-1940.81	2035.65
5	GUIDE	194121512	7.68	19426	0.095	0.172	0.060	0.109	223.345959	18.235405	-1713.75	-296.59
6	GUIDE	195037696	9.62	19412	-0.180	0.205	0.104	0.174	224.205126	18.549742	1168.50	-1555.85
7	GUIDE	195039056	9.79	18888	-0.147	0.106	0.136	0.384	224.328218	18.648184	1716.51	-1598.12

2.4 Star Slots

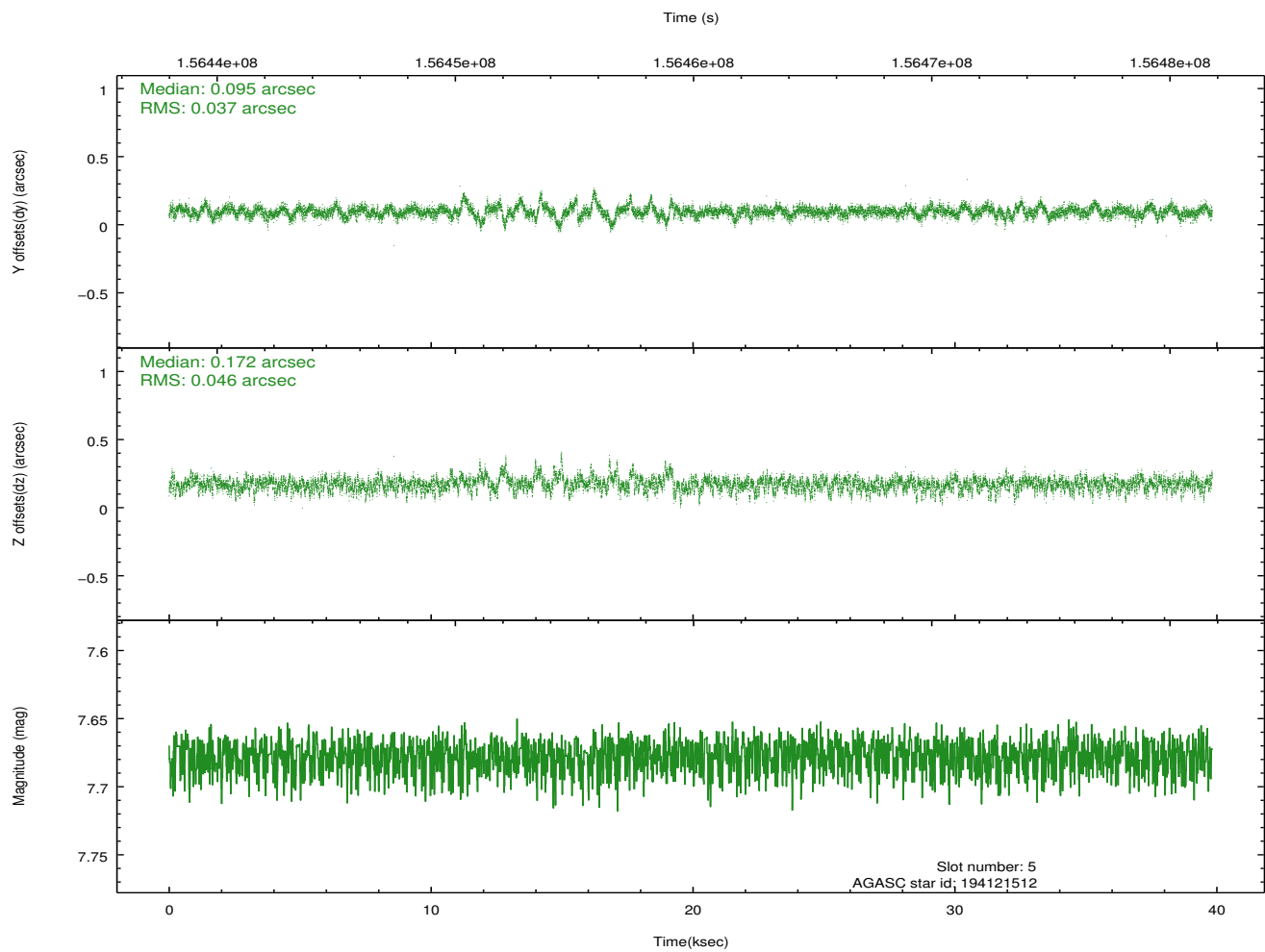
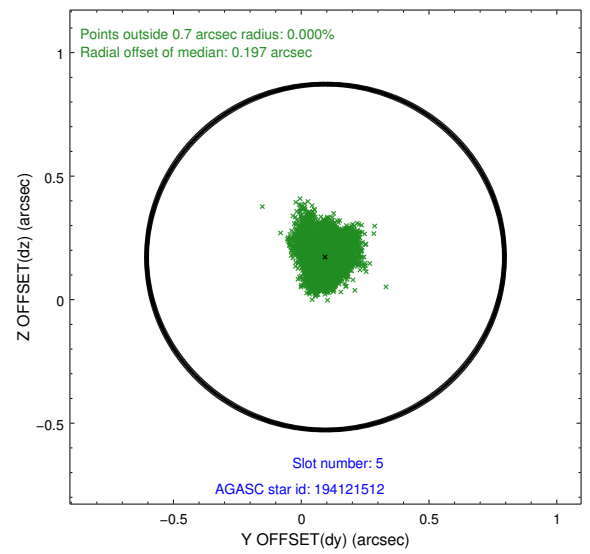
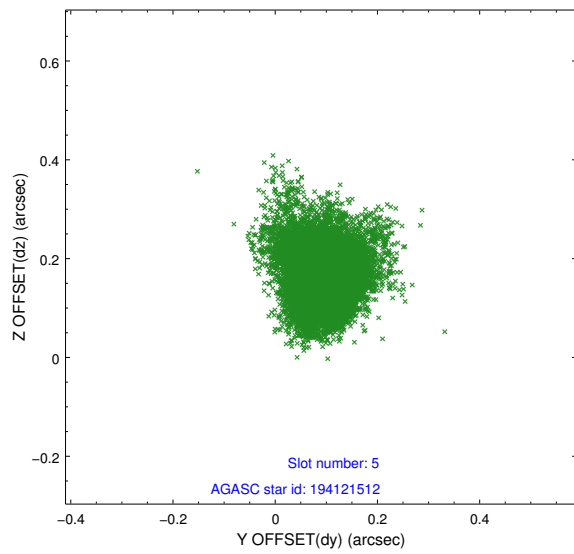
2.4.1 Slot 3



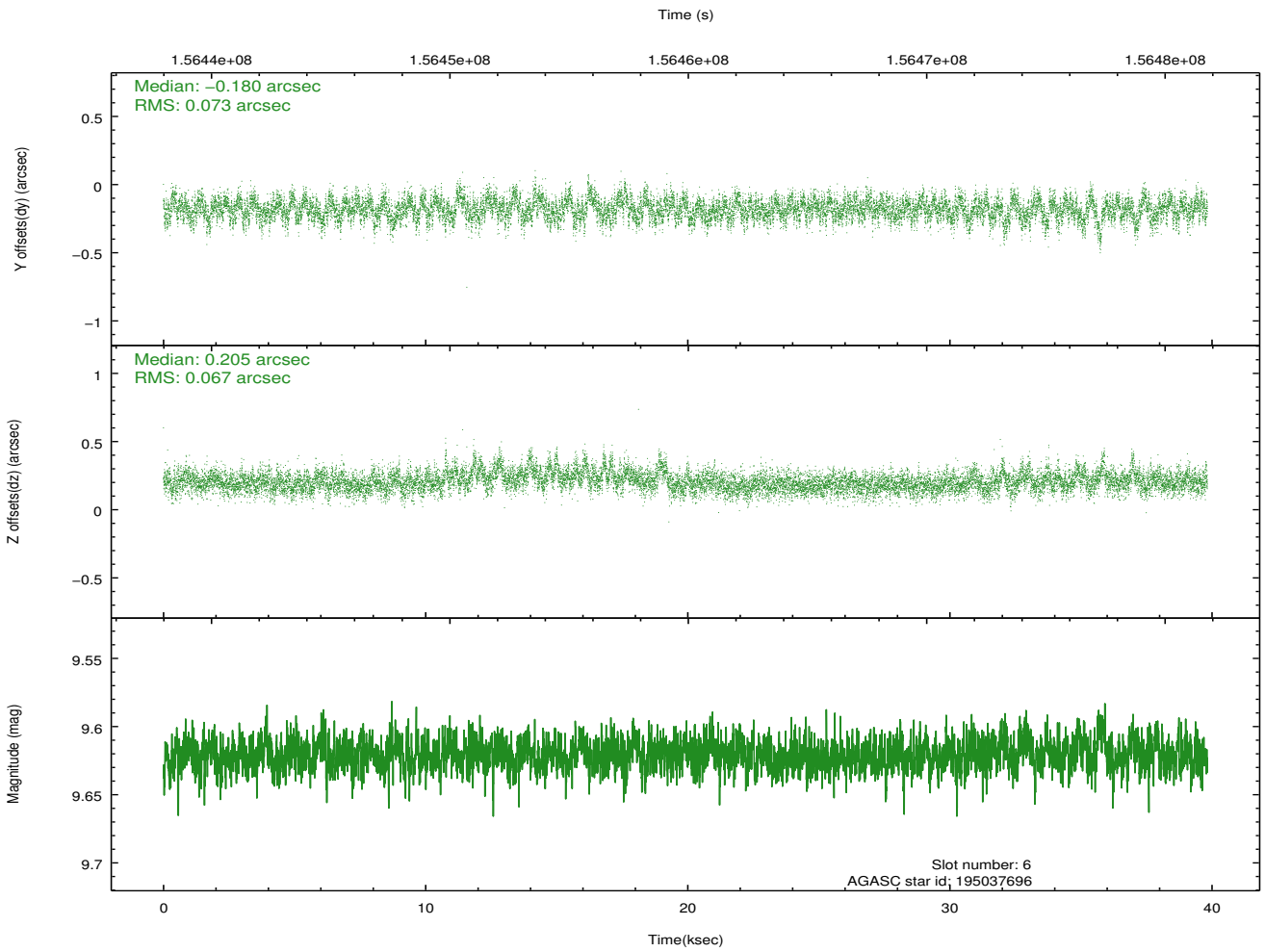
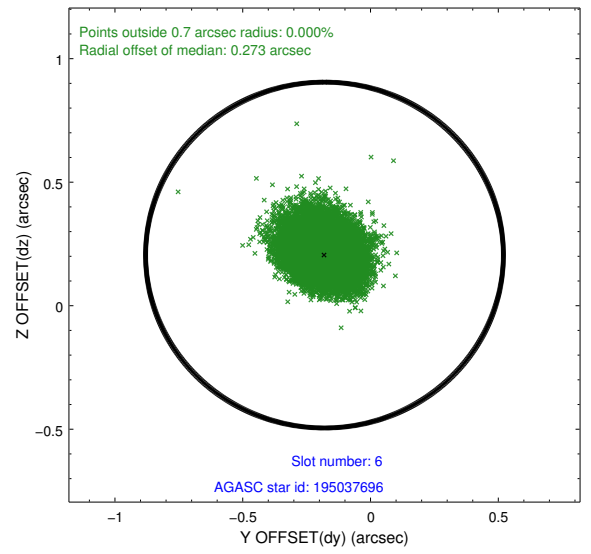
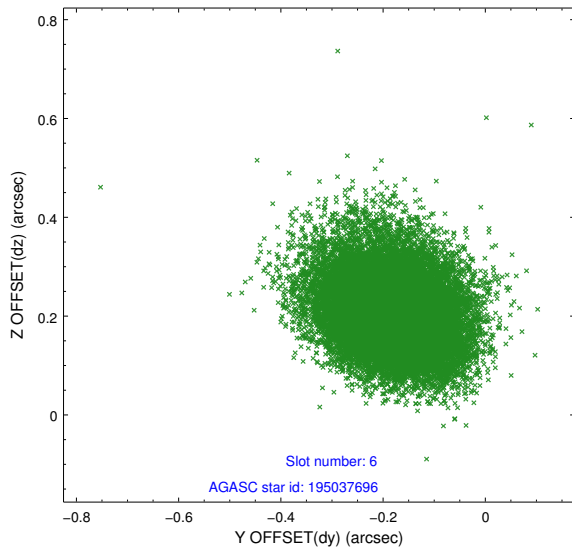
2.4.2 Slot 4



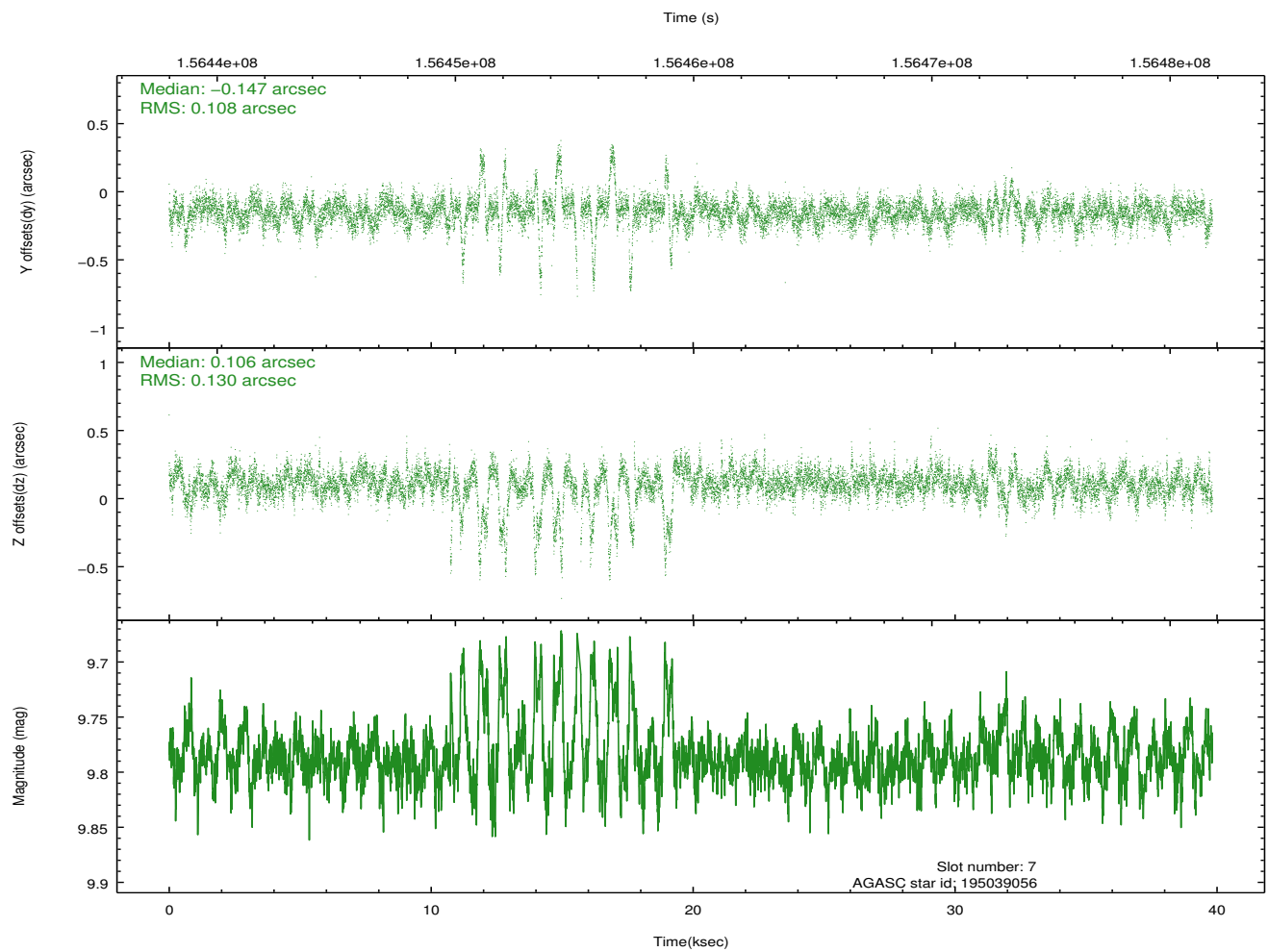
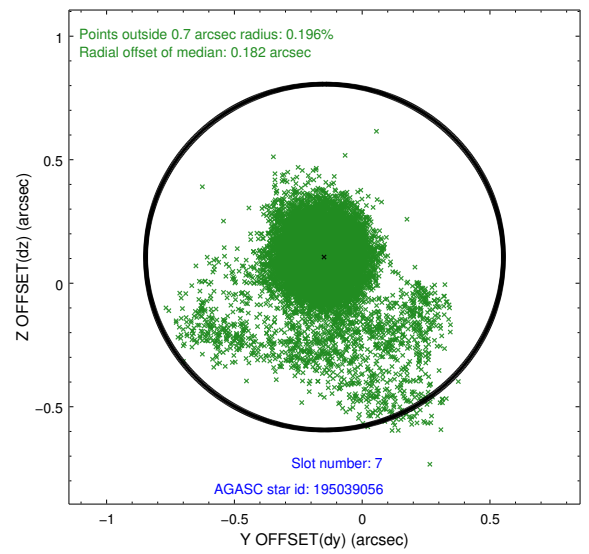
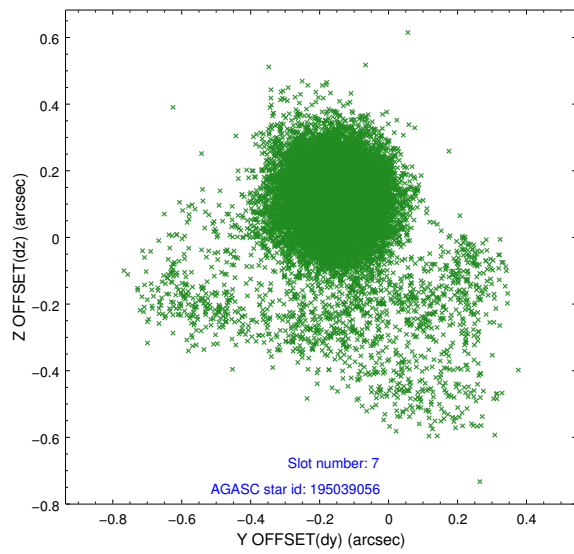
2.4.3 Slot 5



2.4.4 Slot 6

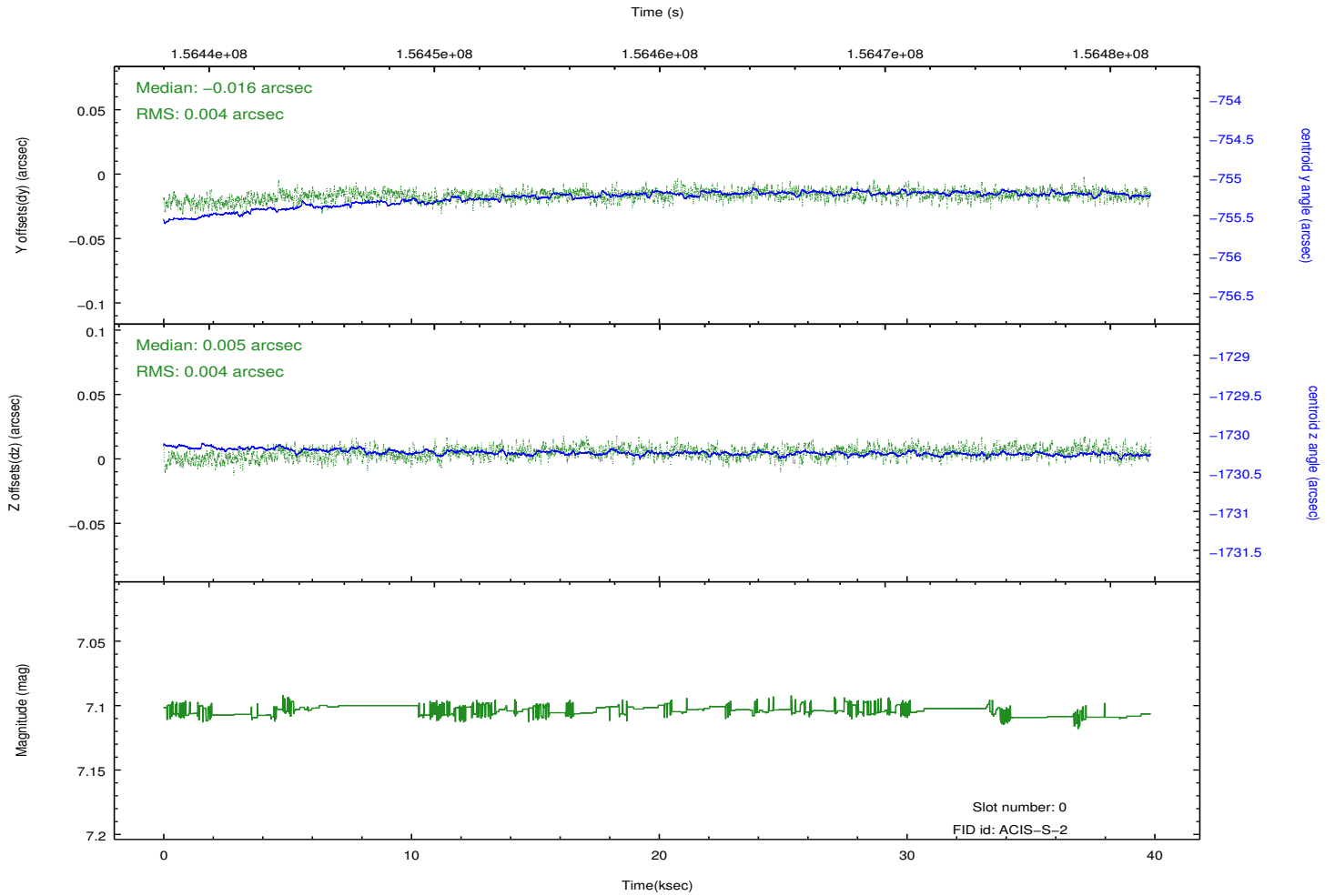
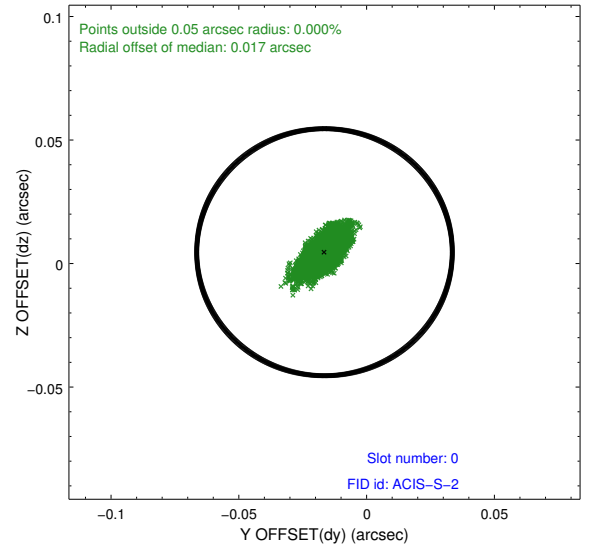
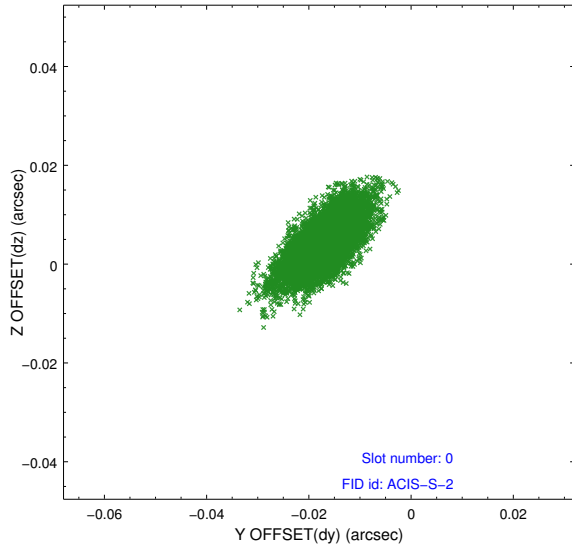


2.4.5 Slot 7

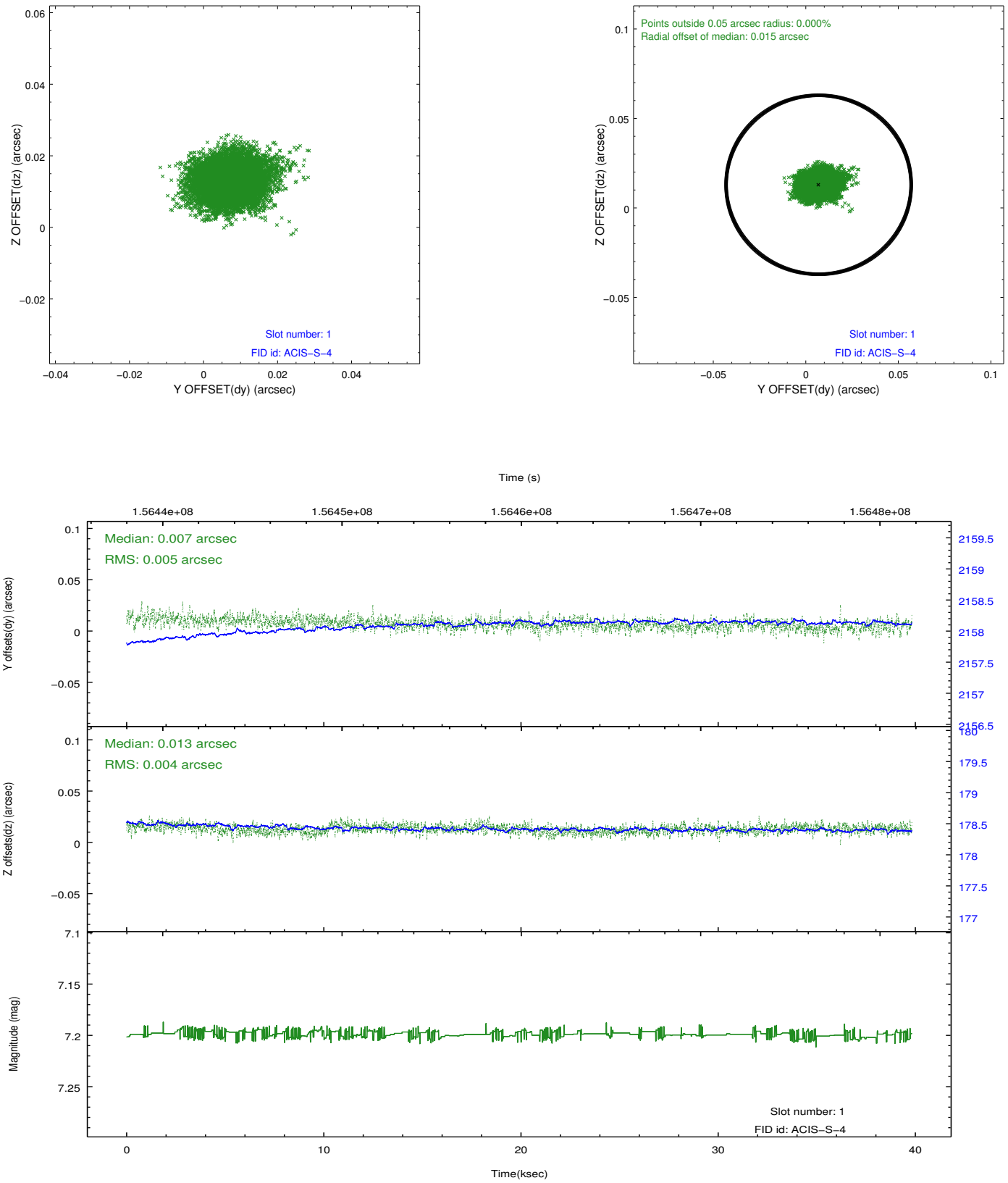


2.5 FID Slots

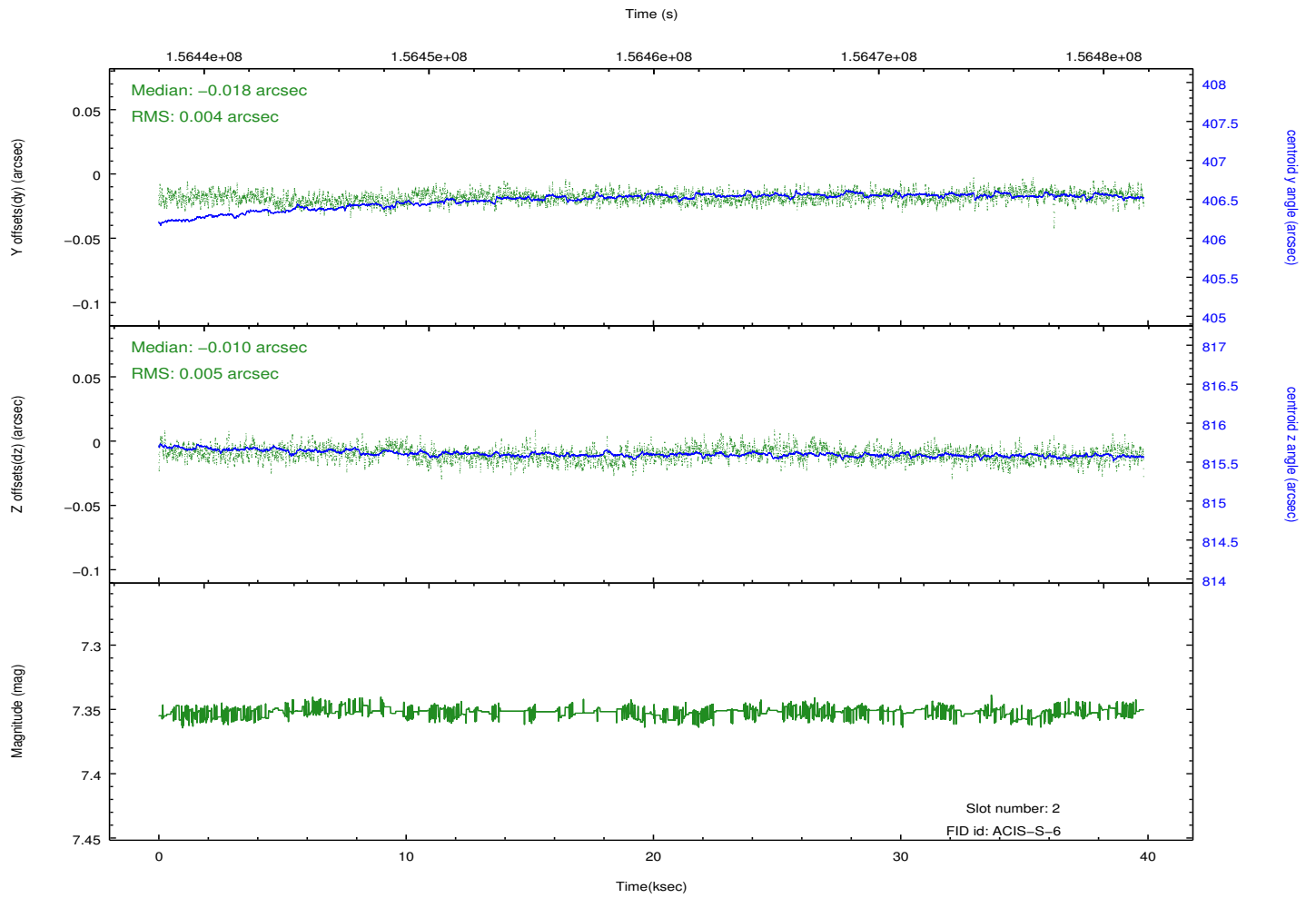
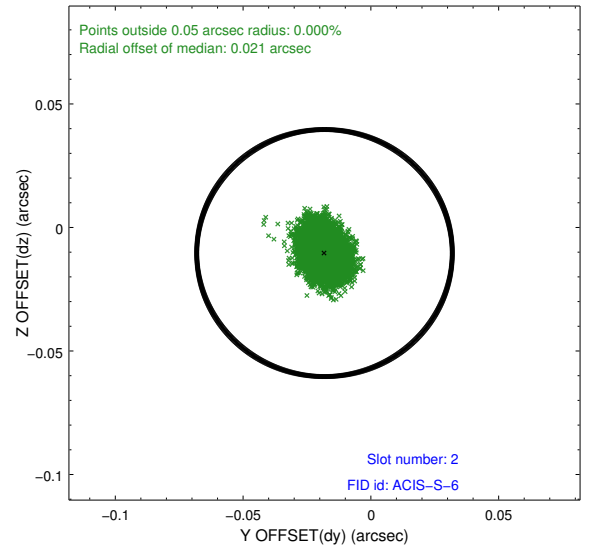
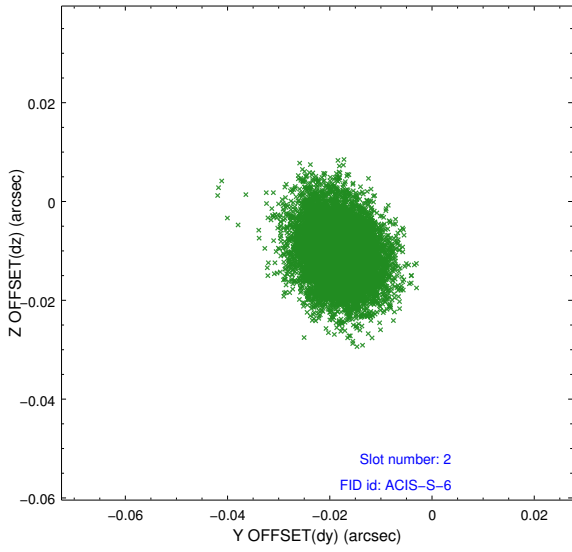
2.5.1 Slot 0



2.5.2 Slot 1



2.5.3 Slot 2



A Summary

A.1 Status

V&V Scientist	Jen Lauer
V&V Date (YYYY-MM-DD)	2012.10.31
V&V Edition	1
V&V Disposition and Status	OK
V&V Charge Time	38.808

A.2 Comments