

V&V Reference Report

L2 ASCDS Version : 8.4.5

Observation 3203 - L2 Version 3
Chandra X-Ray Center

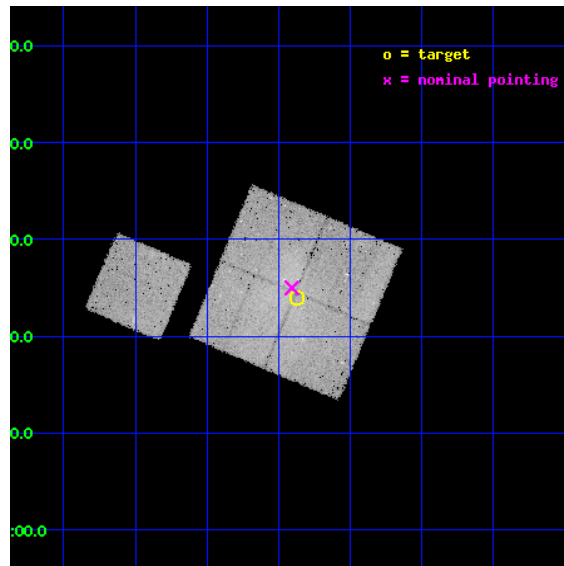
L2 Processing Date : Sep 30 2012

Contents

1	Front	2
2	OBI	3
2.1	OBI	3
2.1.1	Images	3
2.1.2	Bias	3
2.1.3	Parameters	4
2.1.4	Events	4
2.2	Compared Parameters	5
2.3	Aspect	6
2.4	Star Slots	9
2.4.1	Slot 3	9
2.4.2	Slot 4	10
2.4.3	Slot 5	11
2.4.4	Slot 6	12
2.4.5	Slot 7	13
2.5	FID Slots	14
2.5.1	Slot 0	14
2.5.2	Slot 1	15
2.5.3	Slot 2	16
A	Summary	17
A.1	Status	17
A.2	Comments	17

1 Front

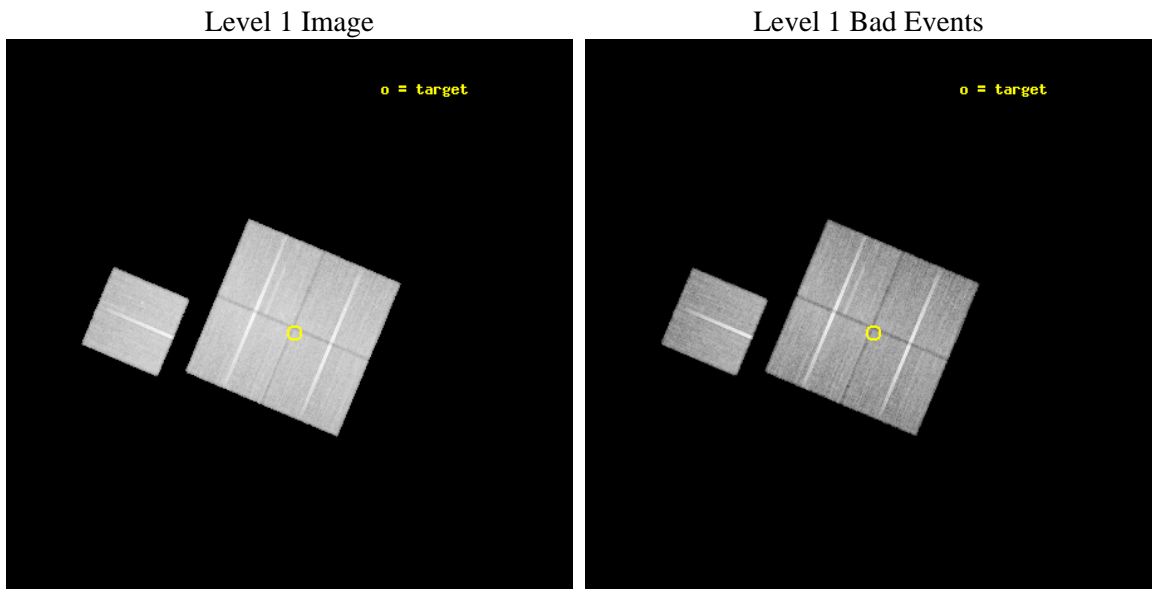
seq_num	800203	Sequence number
obs_id	3203	Observation id
title	ABELL 168, A RARE MERGER WITH THE SIMPLEST GEOMETRY	Proposal title
observer	Dr Maxim Markevitch	Principal investigator
object	A168_OFFSET1	Source name
dtycycle	0	
cycle	P	events from which exps? Prim/Second/Both
ra_targ	18.717917	Observer's specified target RA [deg]
dec_targ	0.399444	Observer's specified target Dec [deg]
ra_nom	18.726871261111	Nominal RA [deg]
dec_nom	0.41653551532278	Nominal Dec [deg]
roll_nom	292.83609479655	Nominal Roll [deg]
revision	3	Processing version of data
ontime	41117.332593888	Sum of GTIs [s]
livetime	40580.104373409	Livetime [s]
ontime0	41117.332593888	Sum of GTIs [s]
ontime1	41120.514604121	Sum of GTIs [s]
ontime2	41114.273713633	Sum of GTIs [s]
ontime3	41108.032813221	Sum of GTIs [s]
ontime6	41111.009633347	Sum of GTIs [s]
l2events	122643	Number of level 2 events



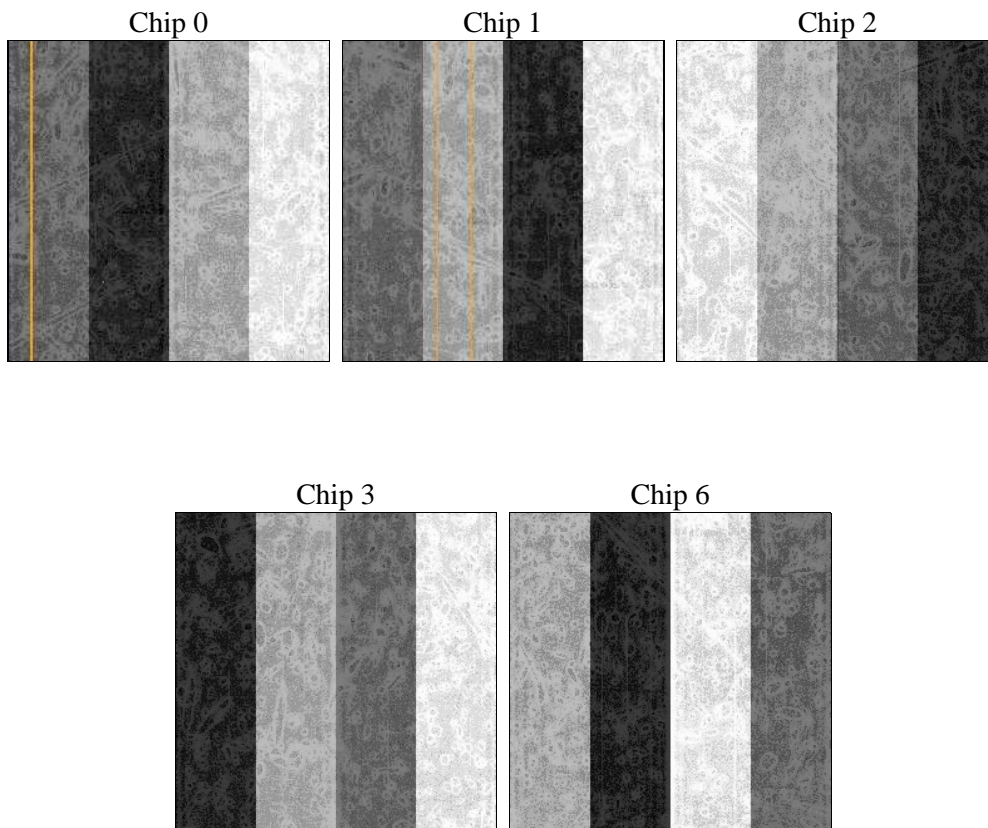
2 OBI

2.1 OBI

2.1.1 Images



2.1.2 Bias



2.1.3 Parameters

obi_num	1	Obi number	sched_exp_time	41000.000000	[s] Scheduled observation exposure time
ascdsver	8.4.5	Processing system revision	ontime	41117.332593888	Sum of GTIs [s]
caldbver	4.5.2	 	ontime0	41117.332593888	Sum of GTIs [s]
date	2012-09-30T03:43:38	Date and time of file creation	ontime1	41120.514604121	Sum of GTIs [s]
revision	3	Processing version of data	ontime2	41114.273713633	Sum of GTIs [s]
			ontime3	41108.032813221	Sum of GTIs [s]
			ontime6	41111.009633347	Sum of GTIs [s]
			l1events	1176770	Number of level 1 events

2.1.4 Events

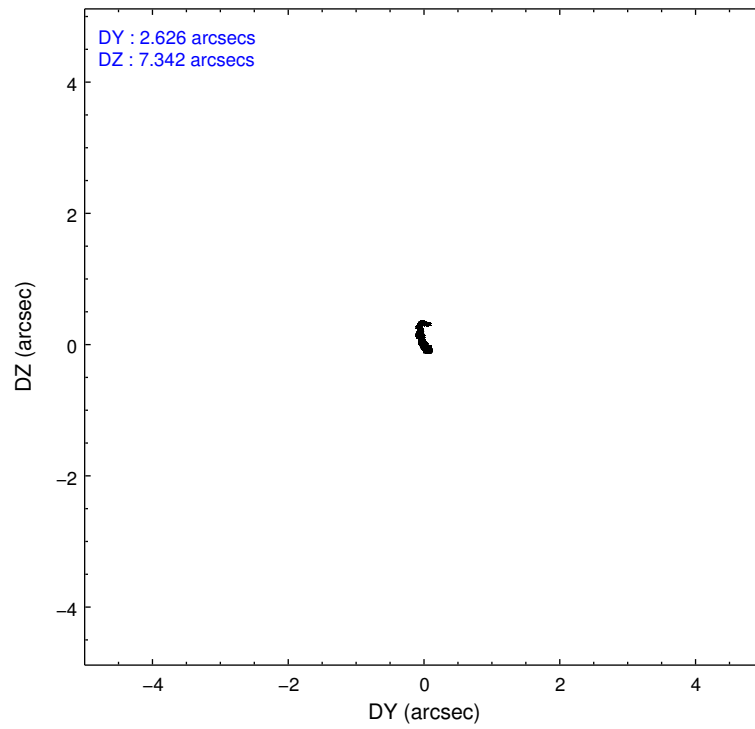
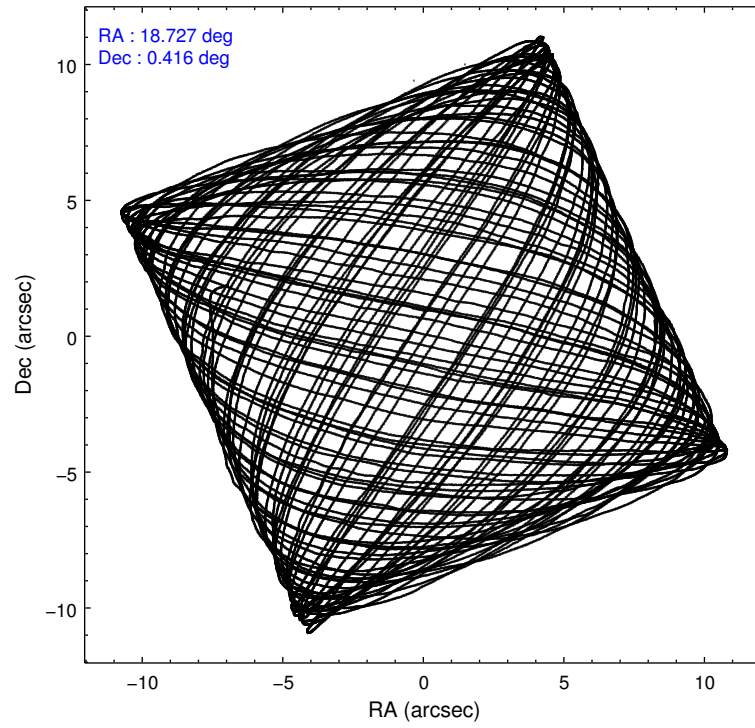
	ccd 0	ccd 1	ccd 2	ccd 3	ccd 6
level 1 events	219169	216427	259141	243558	238475
rejected events	186107	187902	220760	216674	212857
rejected %	84%	86%	85%	88%	89%

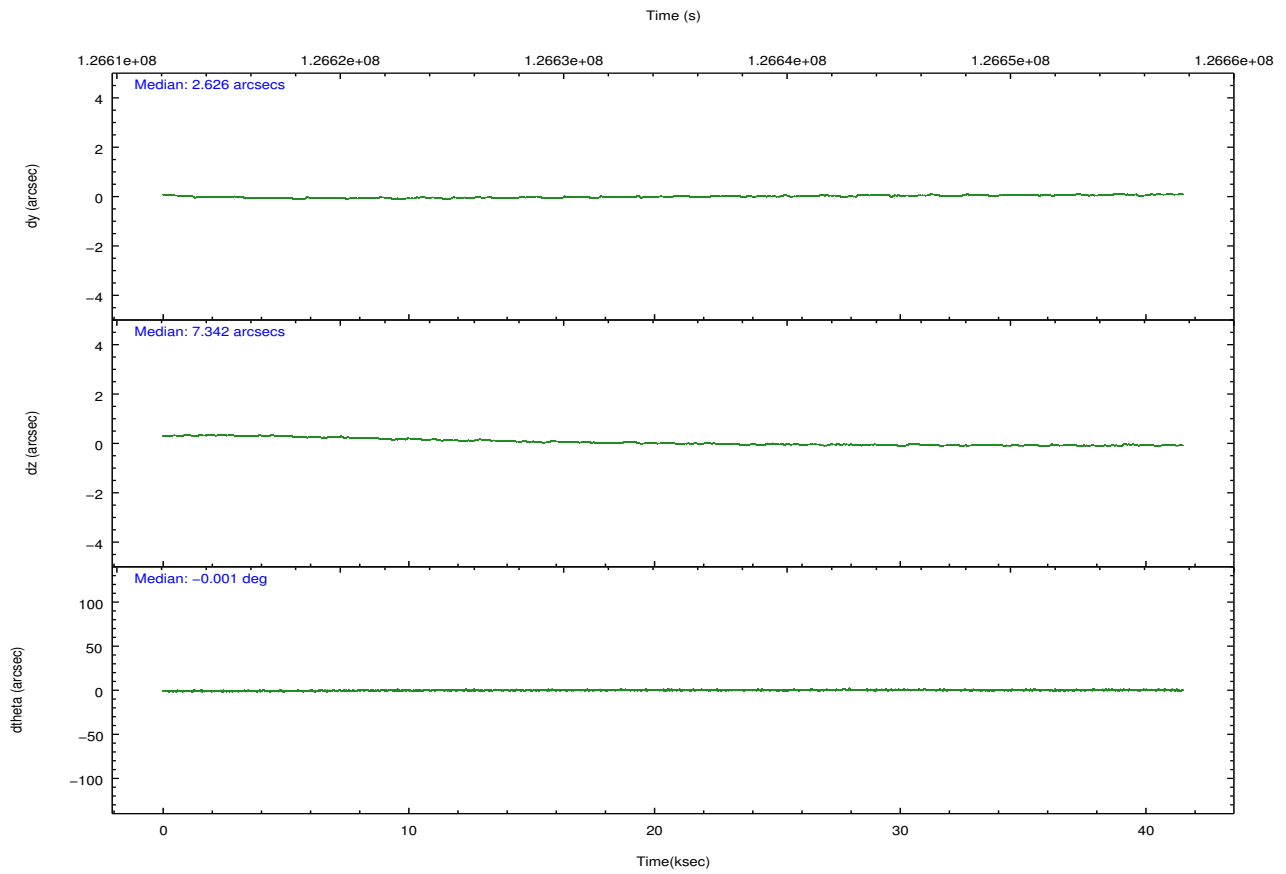
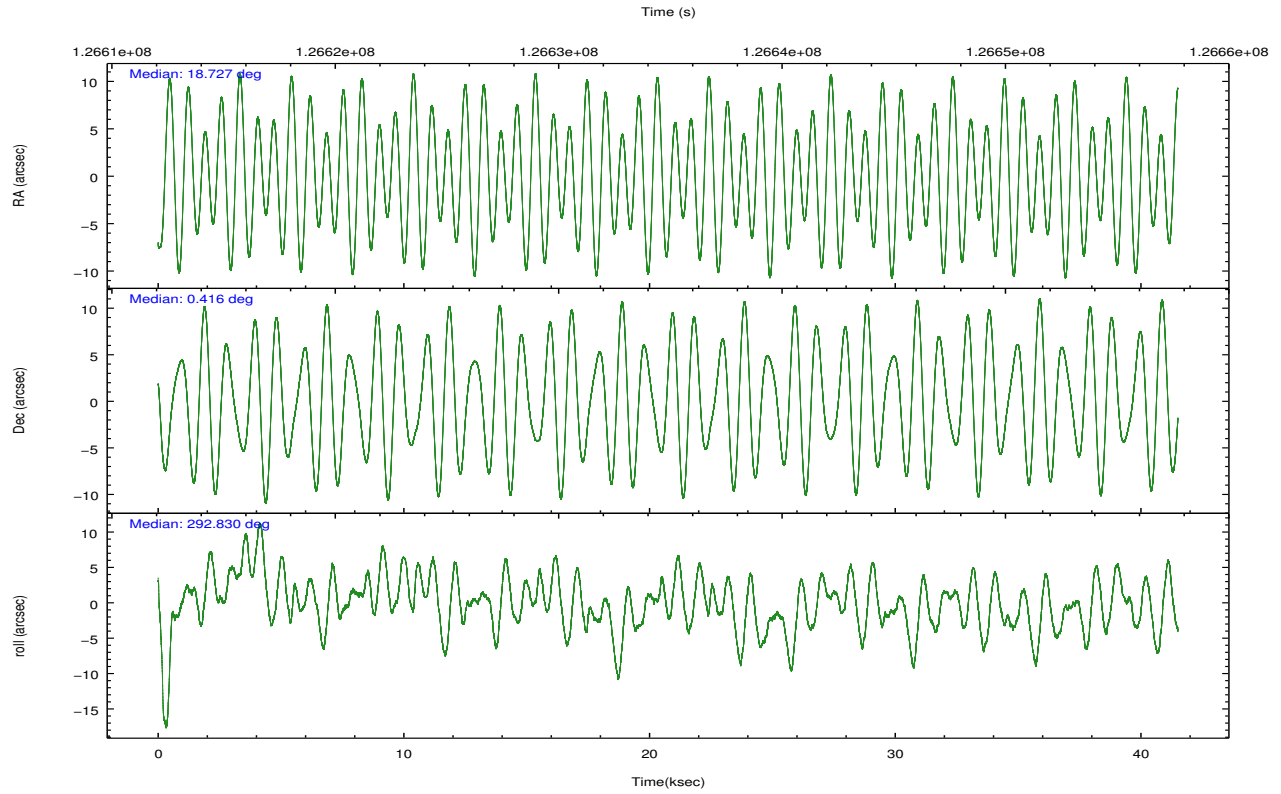
	ccd 0	ccd 1	ccd 2	ccd 3	ccd 6
grade 0 events	16490	12283	20965	12987	10162
	7%	5%	8%	5%	4%
grade 1 events	110	97	141	113	93
	0%	0%	0%	0%	0%
grade 2 events	7008	5874	7638	5003	5949
	3%	2%	2%	2%	2%
grade 3 events	2720	2896	2608	2383	2503
	1%	1%	1%	0%	1%
grade 4 events	2620	2766	2790	2369	2537
	1%	1%	1%	0%	1%
grade 5 events	6745	7475	6437	7580	7769
	3%	3%	2%	3%	3%
grade 6 events	4226	4708	4381	4148	4470
	1%	2%	1%	1%	1%
grade 7 events	179250	180328	214181	208975	204992
	81%	83%	82%	85%	85%

2.2 Compared Parameters

Parameter	Planned	Actual	Parameter	Planned	Actual
Instrument	ACIS	ACIS	Obspar format version number	7	7
Detector	ACIS-01236	ACIS-01236	Obspar file type	PREDICTED	ACTUAL
Grating	NONE	NONE	Obspar update status	NONE	UPDATED
Data mode	VFAINT	VFAINT	Number of optional ACIS chips dropped	0	0
Observation mode	POINTING	POINTING	On-chip summing requested	N	N
[deg] Pointing RA	18.704985	18.72687126111104	Subarray requested	NONE	NONE
[deg] Pointing Dec	0.433059	0.4165355153227847	Alternating exposures requested	N	N
[deg] Pointing Roll	292.627566	292.8360947965496	[s] Primary exposure time	0.000000	3.1
[mm] SIM focus pos	-0.782348	-0.7809083437167272			
[mm] SIM defocus	0	0.001439871863259334			
[mm] SIM translation stage pos	-233.592463	-233.5874344608287			
[mm] SIM translation stage offset	0	-0.005018542100998502			
[s] Observation start time (MET)	126614649.184000	126613529.27723			
Observation start date	2002-01-05T10:43:05	2002-01-05T10:25:29			
[s] Observation end time (MET)	126655649.184000	126656584.40397			
Observation end date	2002-01-05T22:06:25	2002-01-05T22:23:04			
Read mode	TIMED	TIMED			

2.3 Aspect



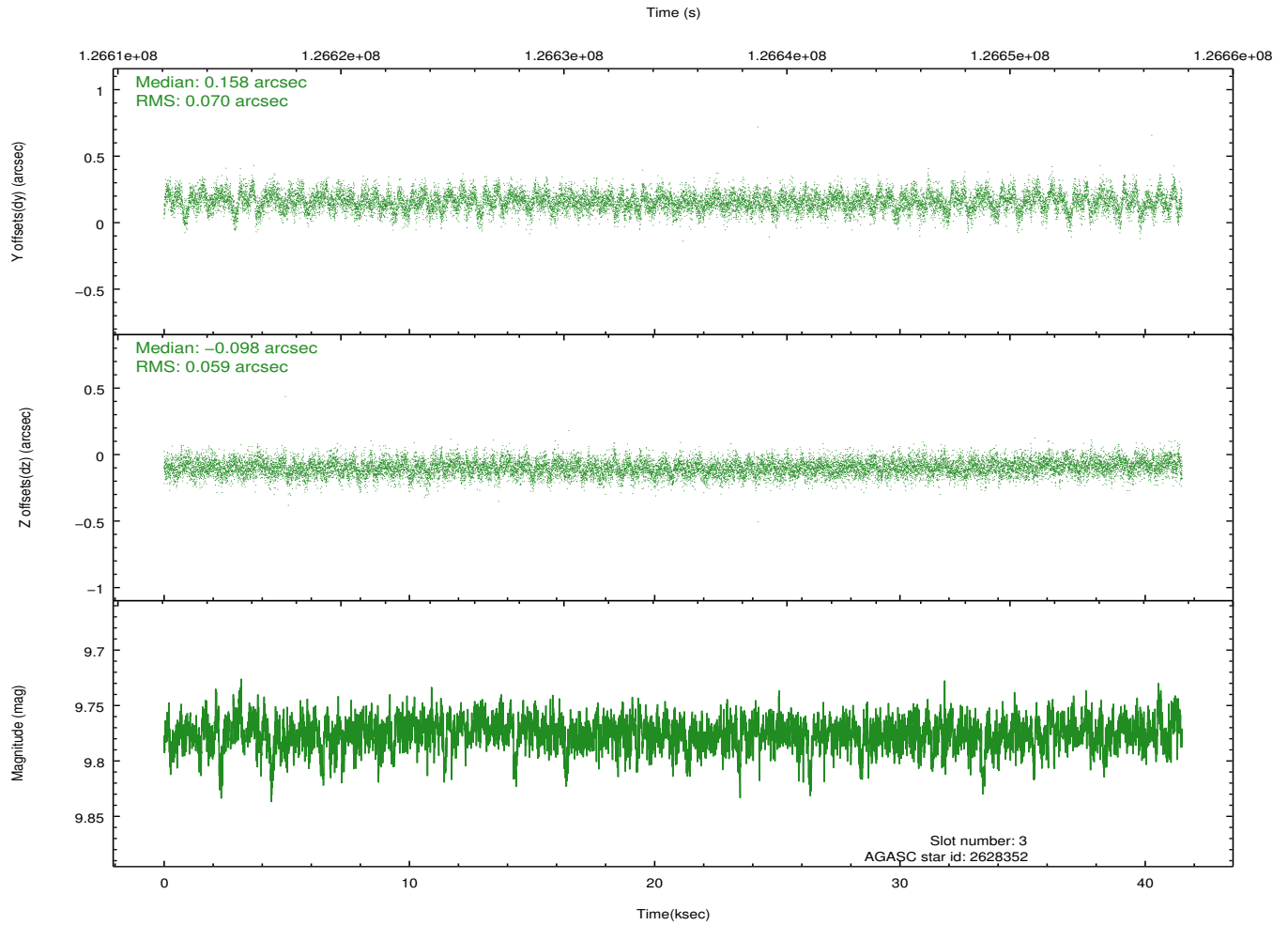
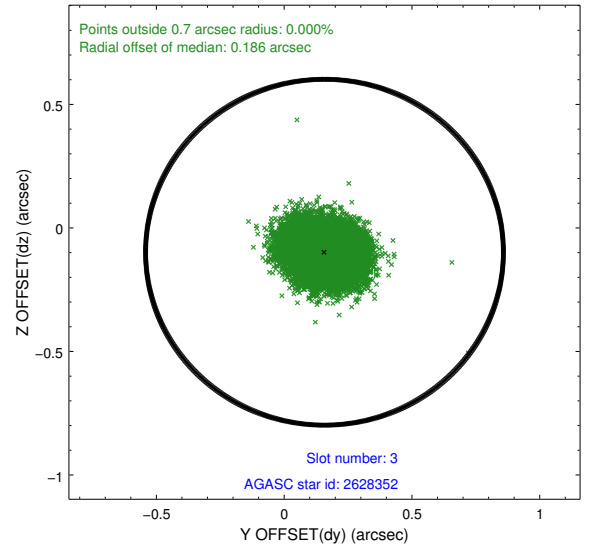
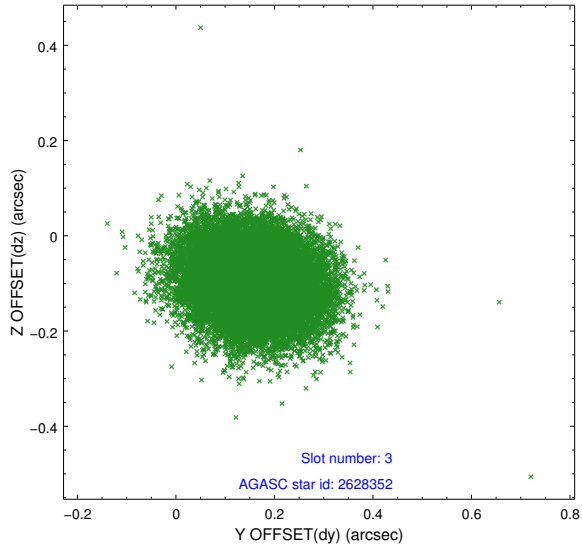


Slot Statistics

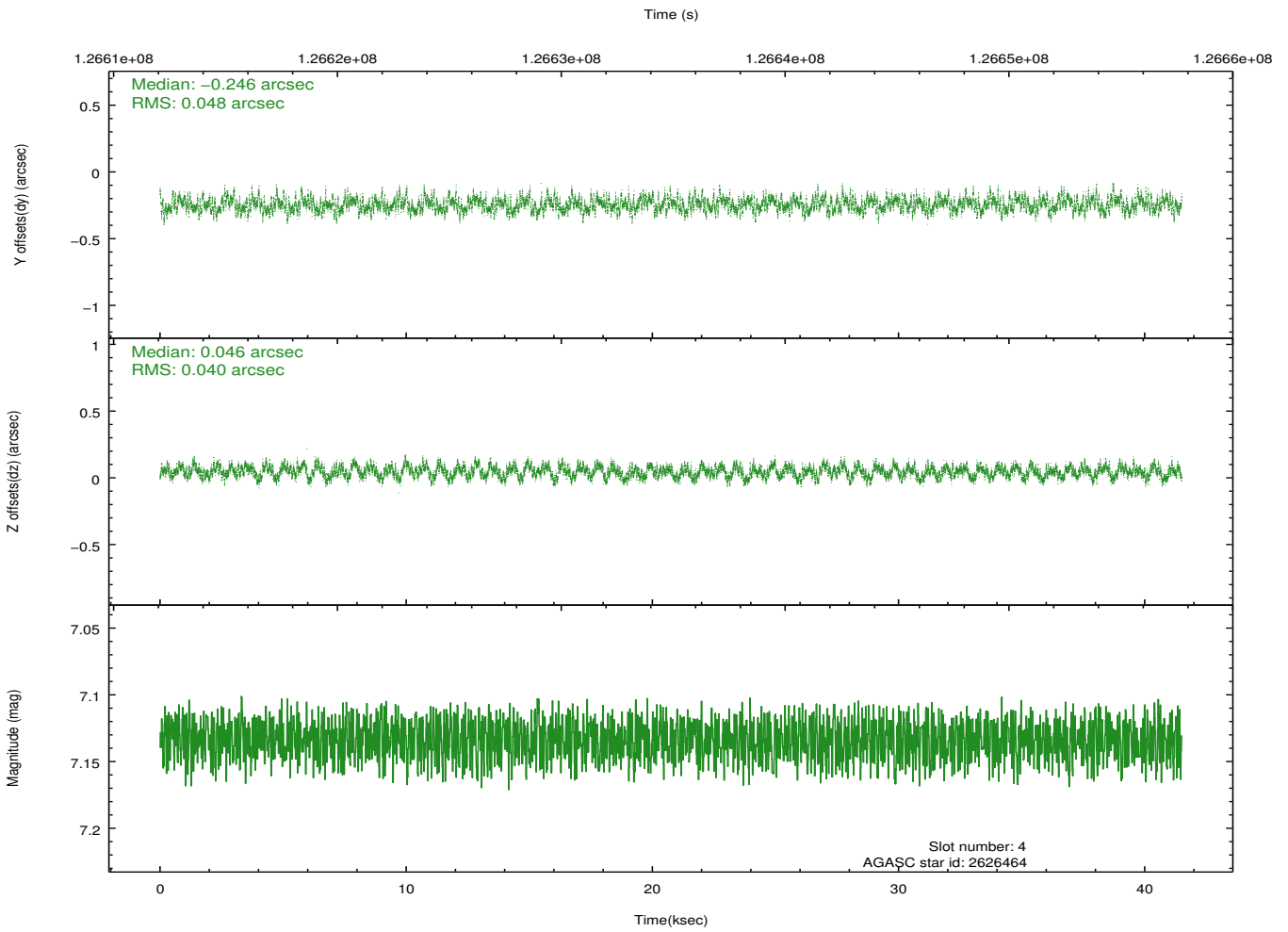
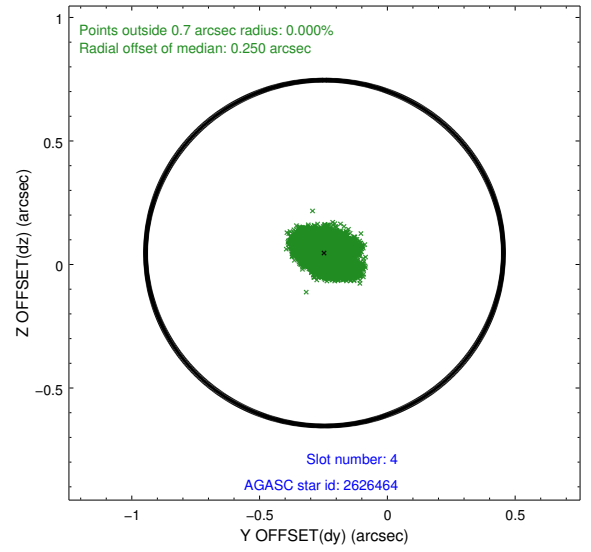
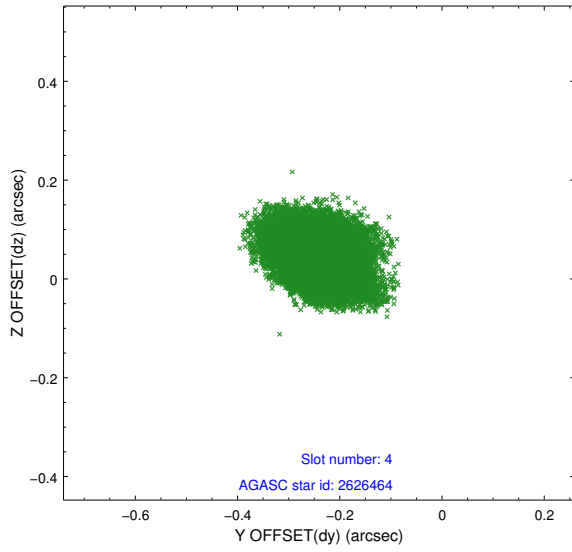
slot	status	id	mag	n_pts	med_dy	med_dz	dr1	dr2	ra	dec	mean_y	mean_z
0	FID	ACIS-I-1	7.24	10112	-0.008	0.033	0.010	0.018	0.000000	0.000000	937.15	-830.79
1	FID	ACIS-I-5	7.24	10107	-0.040	0.049	0.007	0.013	0.000000	0.000000	-1810.95	1066.77
2	FID	ACIS-I-6	7.26	10117	-0.043	-0.013	0.008	0.014	0.000000	0.000000	402.70	1711.18
3	GUIDE	2628352	9.78	20203	0.158	-0.098	0.097	0.159	18.930347	0.017661	1691.84	172.76
4	GUIDE	2626464	7.13	20233	-0.246	0.046	0.067	0.107	18.898535	0.912454	-1326.08	1306.21
5	GUIDE	2624208	9.00	20217	0.088	-0.101	0.070	0.112	18.631908	0.152341	830.85	-632.32
6	GUIDE	2626048	9.45	20215	0.109	0.139	0.125	0.203	19.277853	0.298245	1240.54	1716.35
7	GUIDE	2621728	9.45	20219	-0.106	0.010	0.094	0.151	18.549461	0.649533	-935.56	-217.71

2.4 Star Slots

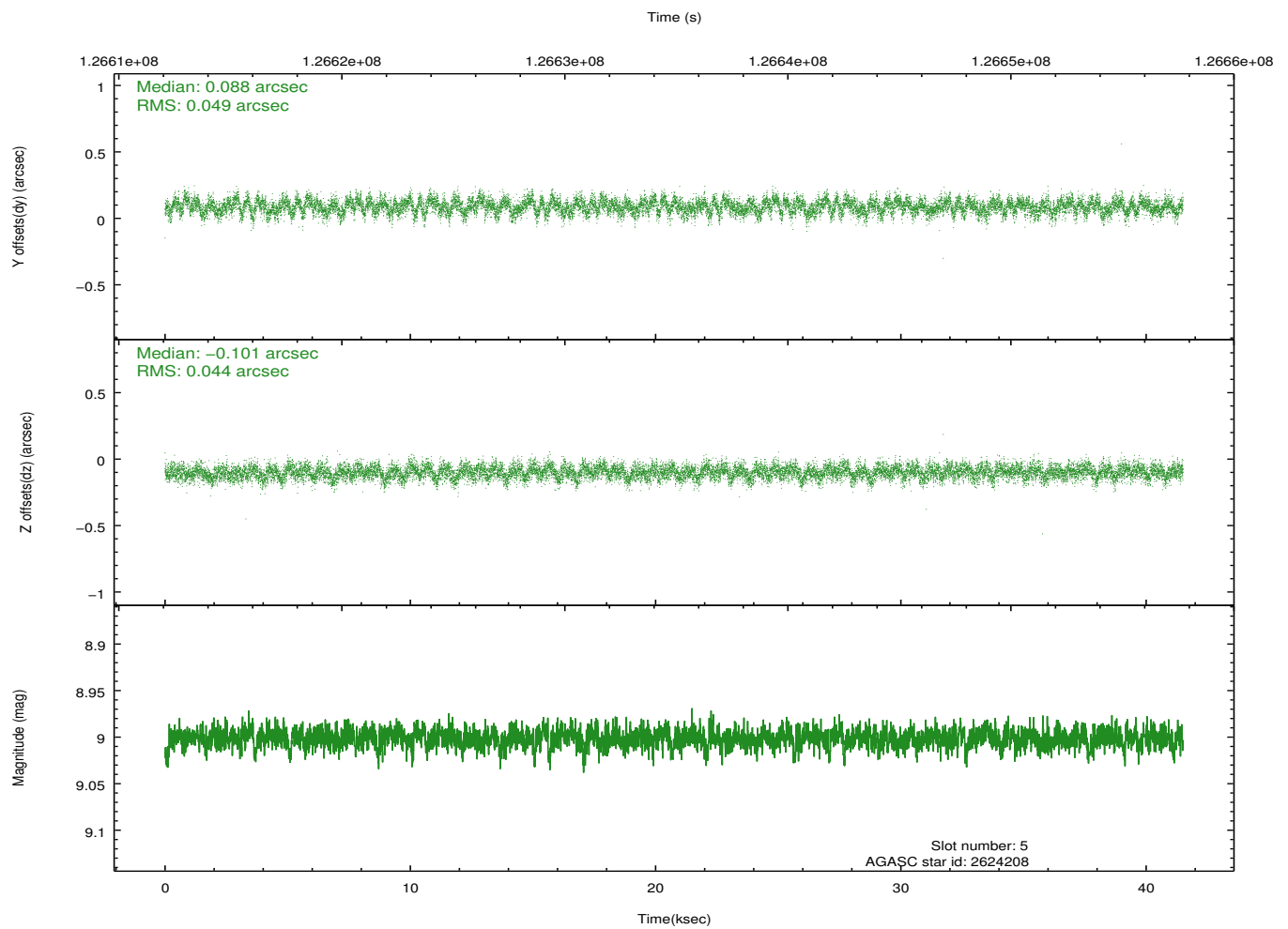
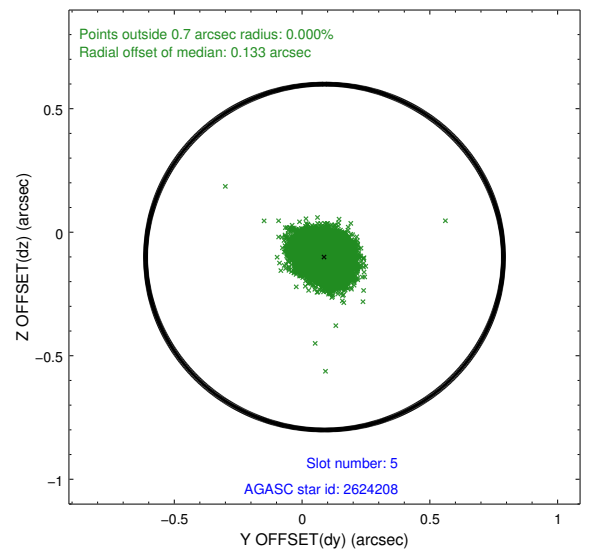
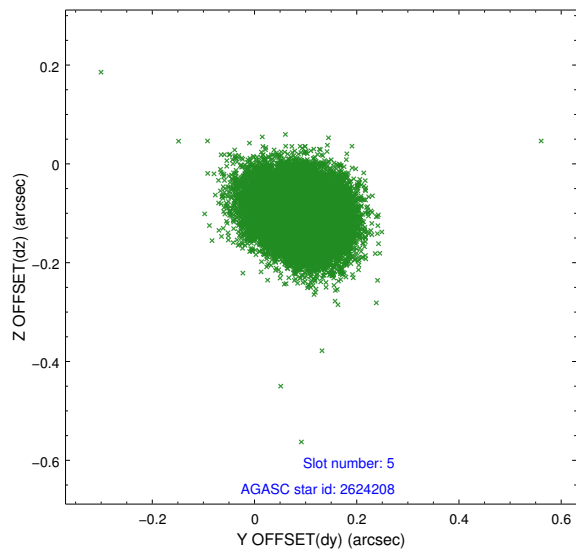
2.4.1 Slot 3



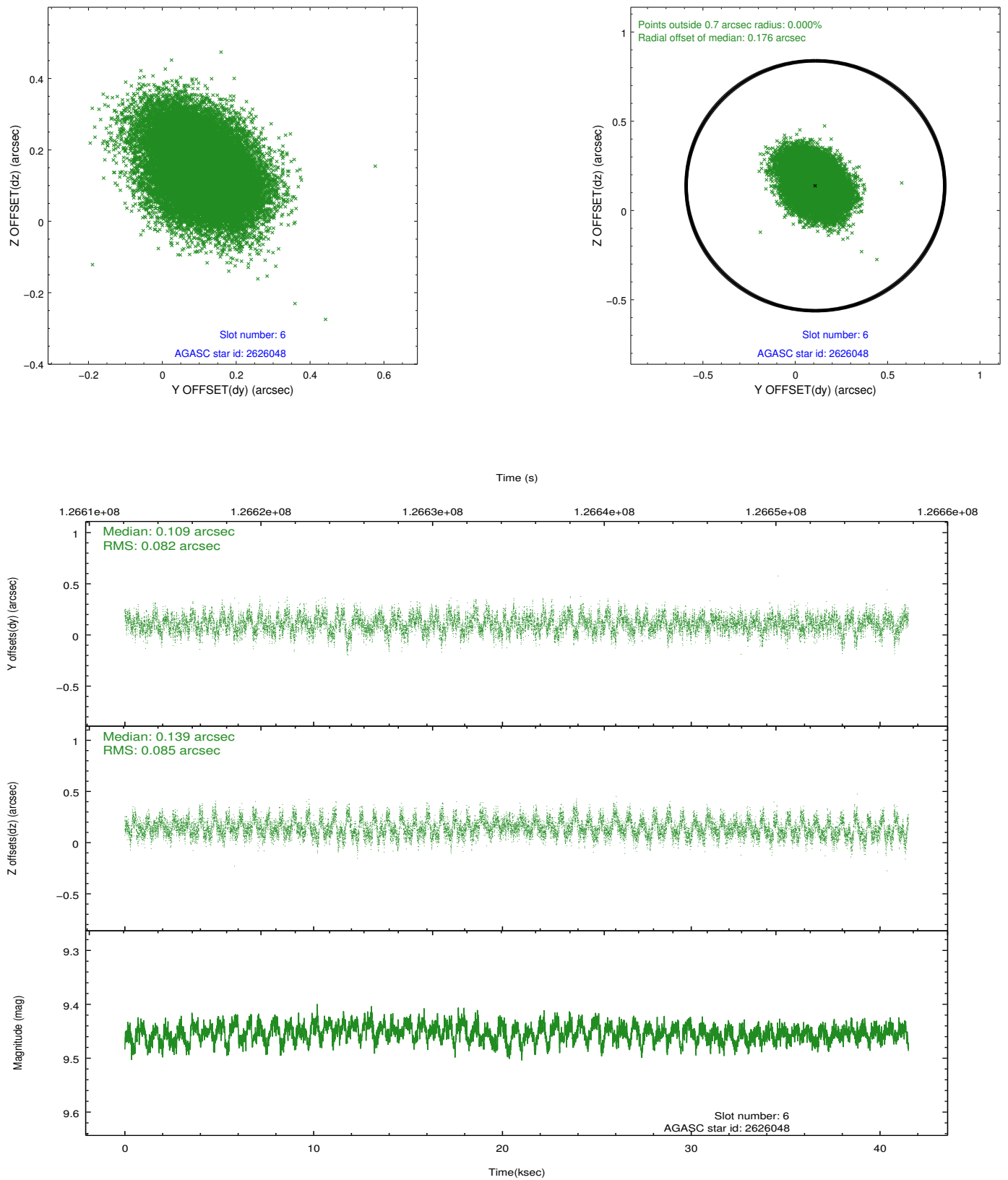
2.4.2 Slot 4



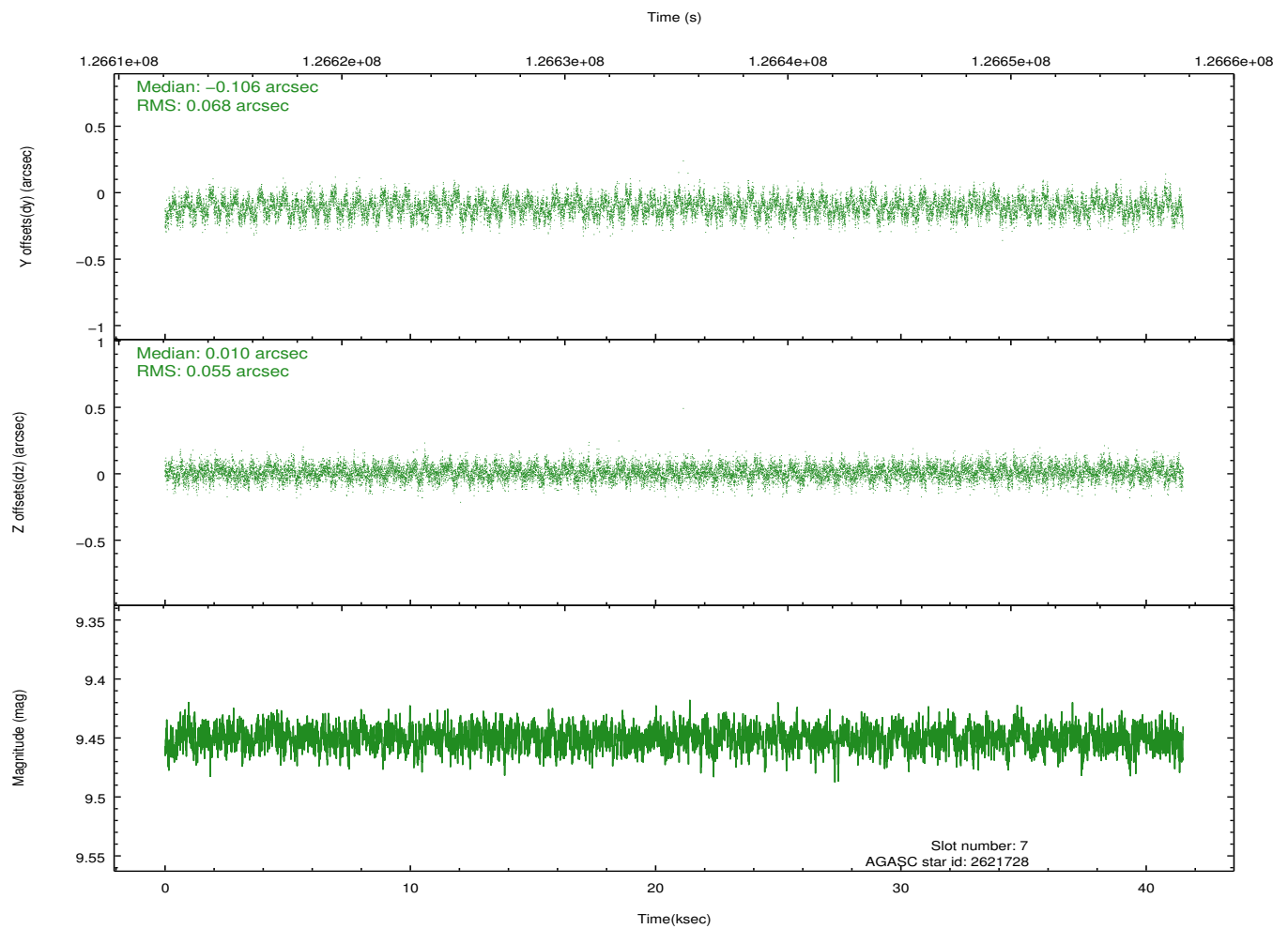
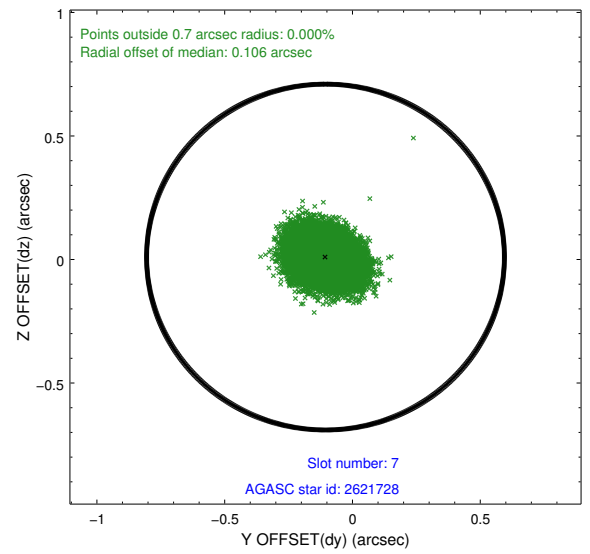
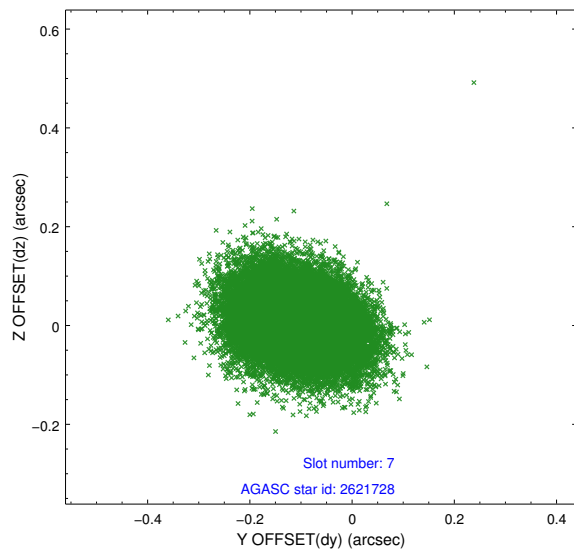
2.4.3 Slot 5



2.4.4 Slot 6

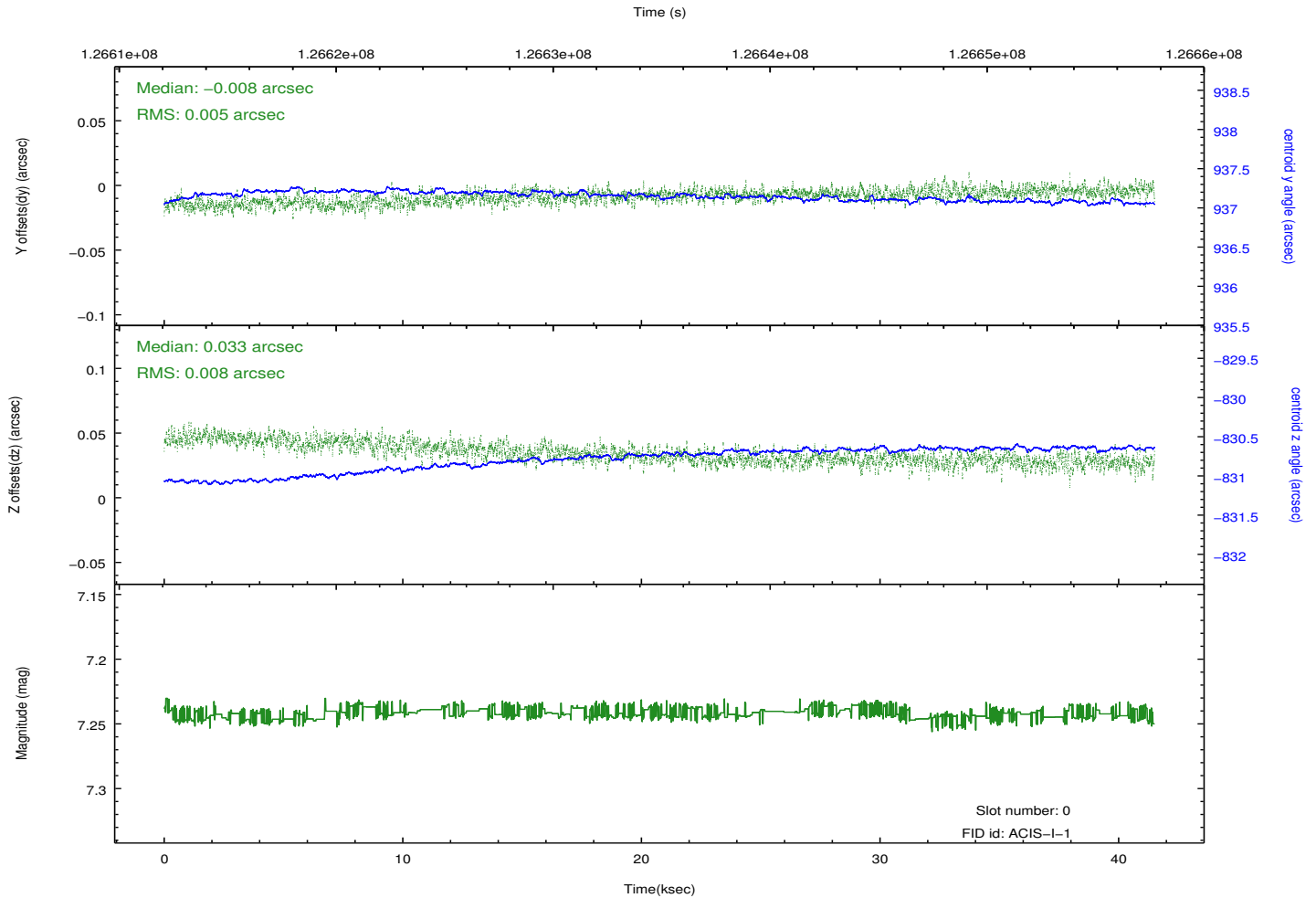
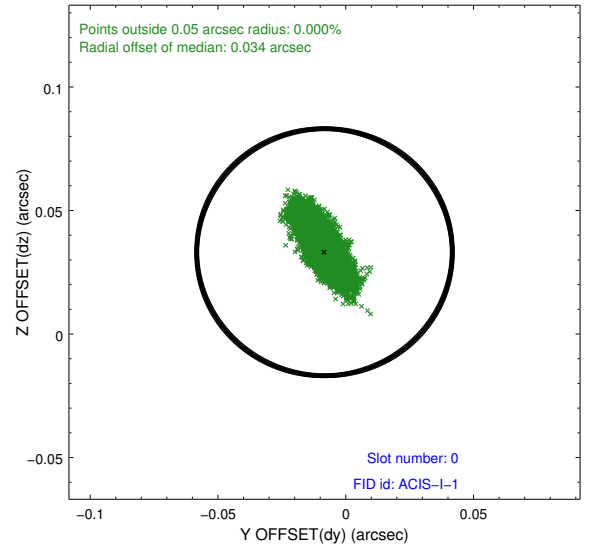
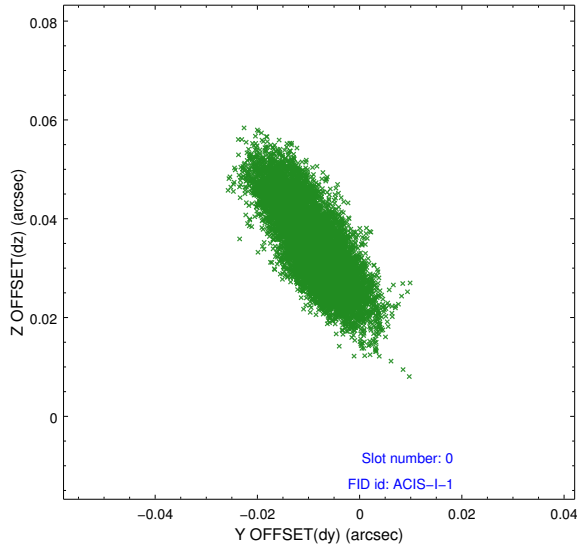


2.4.5 Slot 7

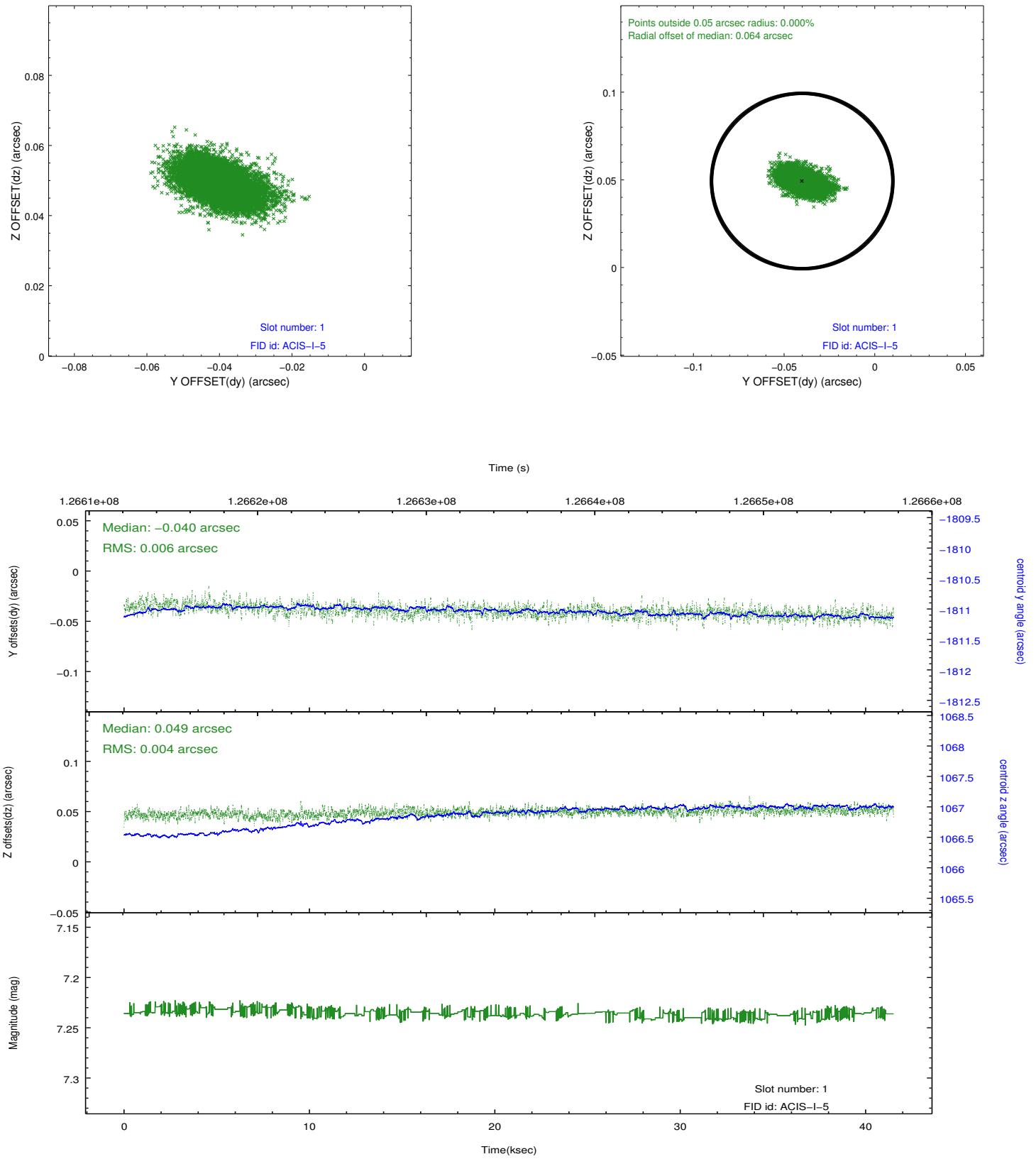


2.5 FID Slots

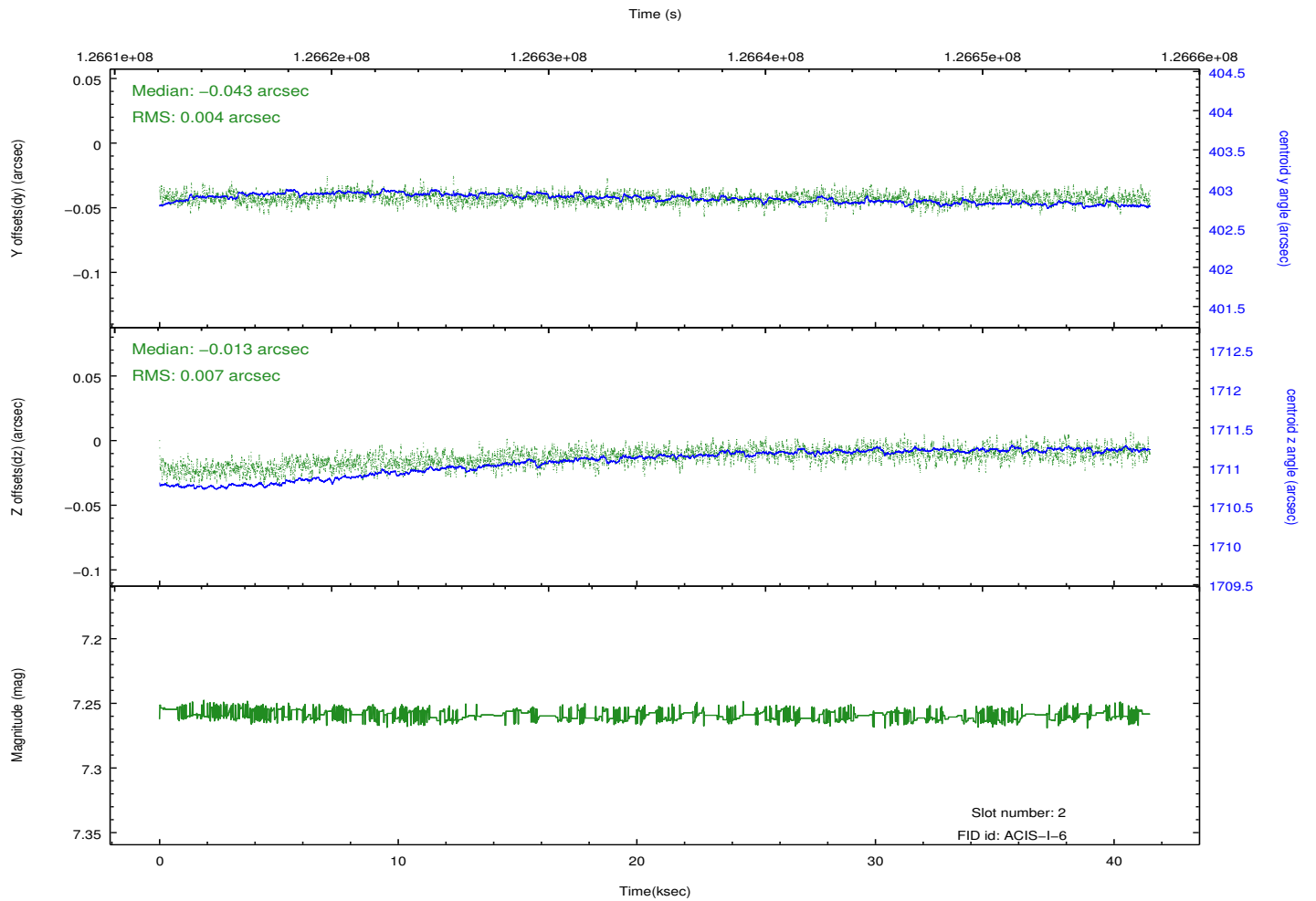
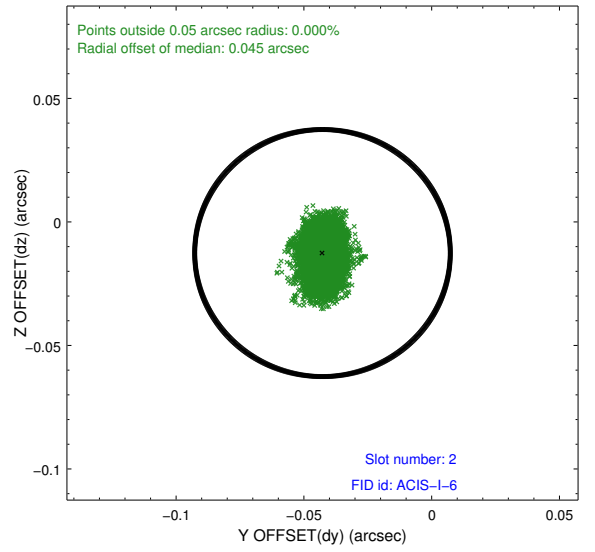
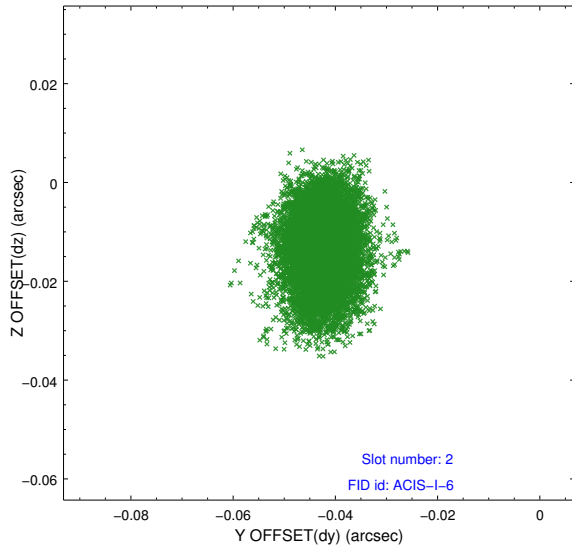
2.5.1 Slot 0



2.5.2 Slot 1



2.5.3 Slot 2



A Summary

A.1 Status

V&V Scientist	Jen Lauer
V&V Date (YYYY-MM-DD)	2012.10.02
V&V Edition	1
V&V Disposition and Status	OK
V&V Charge Time	41.118

A.2 Comments