

# V&V Reference Report

## L2 ASCDS Version : 8.4.5

Observation 3343 - L2 Version 3  
Chandra X-Ray Center

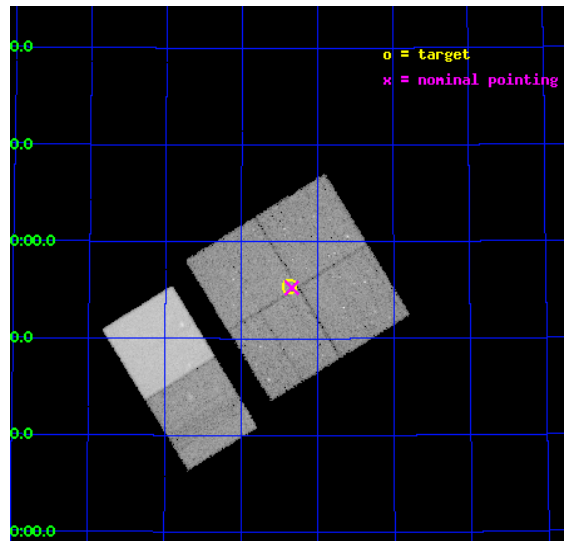
L2 Processing Date : Oct 7 2012

## Contents

<b>1</b>	<b>Front</b>	<b>2</b>
<b>2</b>	<b>OBI</b>	<b>3</b>
2.1	OBI . . . . .	3
2.1.1	Images . . . . .	3
2.1.2	Bias . . . . .	3
2.1.3	Parameters . . . . .	4
2.1.4	Events . . . . .	4
2.2	Compared Parameters . . . . .	5
2.3	Aspect . . . . .	6
2.4	Star Slots . . . . .	9
2.4.1	Slot 3 . . . . .	9
2.4.2	Slot 4 . . . . .	10
2.4.3	Slot 5 . . . . .	11
2.4.4	Slot 6 . . . . .	12
2.4.5	Slot 7 . . . . .	13
2.5	FID Slots . . . . .	14
2.5.1	Slot 0 . . . . .	14
2.5.2	Slot 1 . . . . .	15
2.5.3	Slot 2 . . . . .	16
<b>A</b>	<b>Summary</b>	<b>17</b>
A.1	Status . . . . .	17
A.2	Comments . . . . .	17

# 1 Front

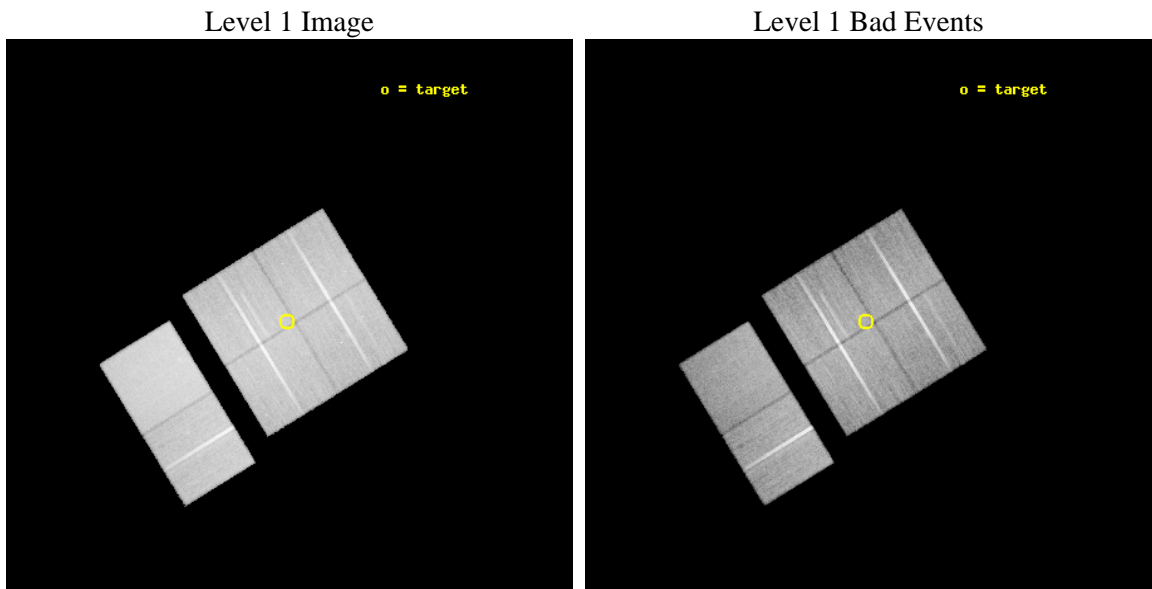
seq_num	900182	Sequence number
obs_id	3343	Observation id
title	WIDE-FIELD CHANDRA SURVEY OF THE LOCKMAN HOLE-NORTHWEST	Proposal t
observer	Prof. Amy Barger	Principal investigator
object	LH-NW-6	Source name
dtcycle	0	&#160
cycle	P	events from which exps? Prim/Second/Both
ra_targ	158.341675	Observer's specified target RA [deg]
dec_targ	57.923611	Observer's specified target Dec [deg]
ra_nom	158.334522868	Nominal RA [deg]
dec_nom	57.920915343369	Nominal Dec [deg]
roll_nom	238.44493675576	Nominal Roll [deg]
revision	3	Processing version of data
ontime	37462.318039566	Sum of GTIs [s]
livetime	36987.94761145	Livetime [s]
ontime0	37468.799860418	Sum of GTIs [s]
ontime1	37465.559029758	Sum of GTIs [s]
ontime2	37468.799860418	Sum of GTIs [s]
ontime3	37462.318039566	Sum of GTIs [s]
ontime6	37468.799860418	Sum of GTIs [s]
ontime7	37468.799860418	Sum of GTIs [s]
l2events	291440	Number of level 2 events



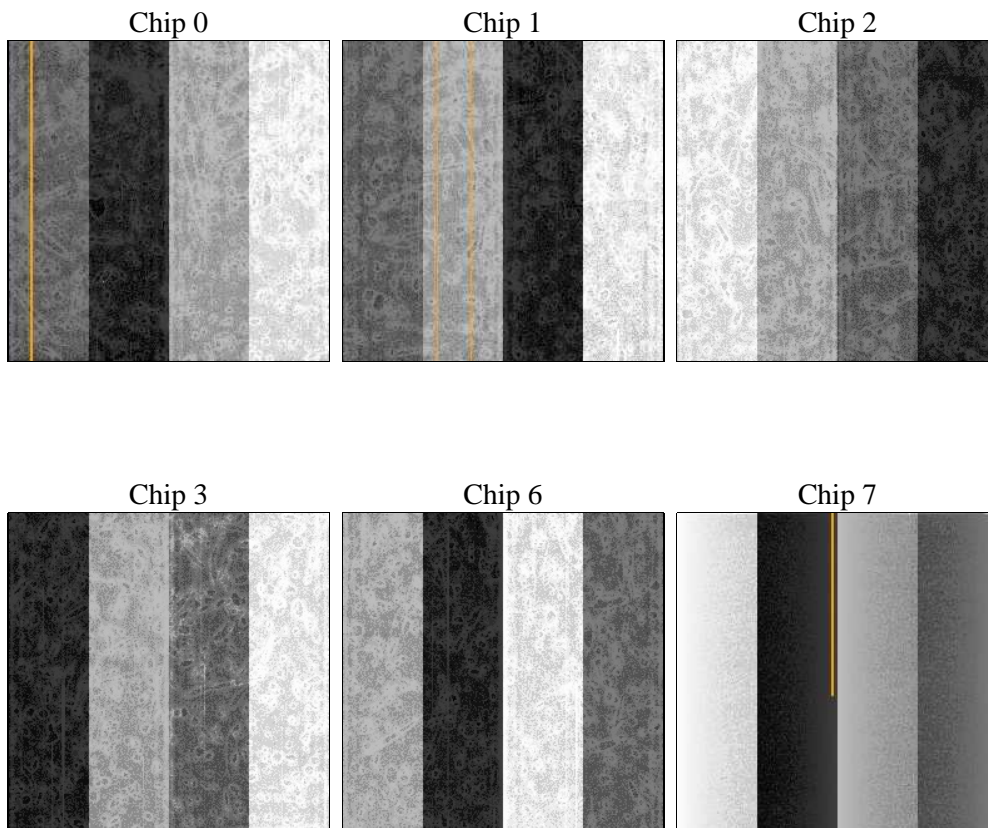
## 2 OBI

### 2.1 OBI

#### 2.1.1 Images



#### 2.1.2 Bias



### 2.1.3 Parameters

obi_num	0	Obi number	sched_exp_time	37390.732000	[s] Scheduled observation exposure time
ascdsver	8.4.5	Processing system revision	ontime	37462.318039566	Sum of GTIs [s]
caldbver	4.5.2	&#160	ontime0	37468.799860418	Sum of GTIs [s]
date	2012-10-07T08:55:43	Date and time of file creation	ontime1	37465.559029758	Sum of GTIs [s]
revision	3	Processing version of data	ontime2	37468.799860418	Sum of GTIs [s]
			ontime3	37462.318039566	Sum of GTIs [s]
			ontime6	37468.799860418	Sum of GTIs [s]
			ontime7	37468.799860418	Sum of GTIs [s]
			l1events	1564144	Number of level 1 events

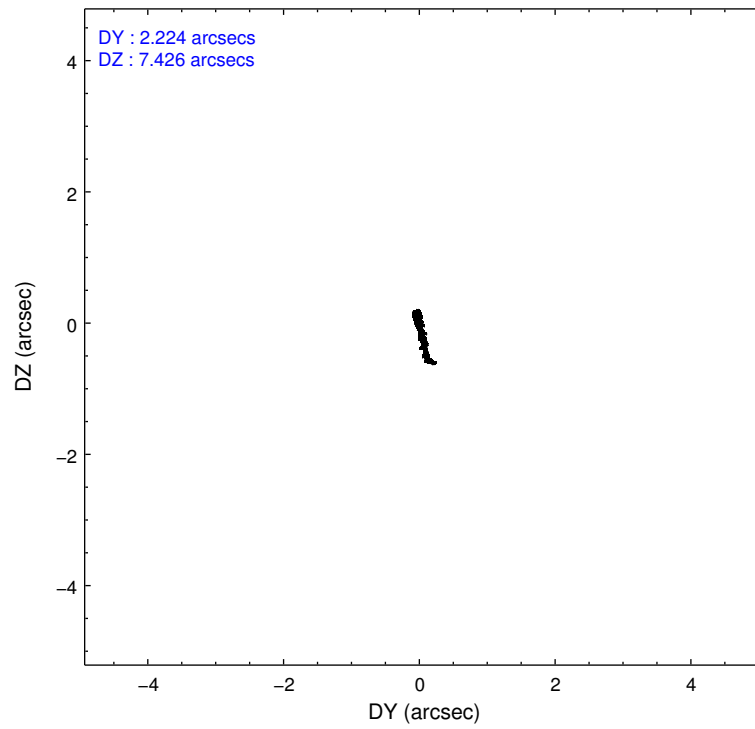
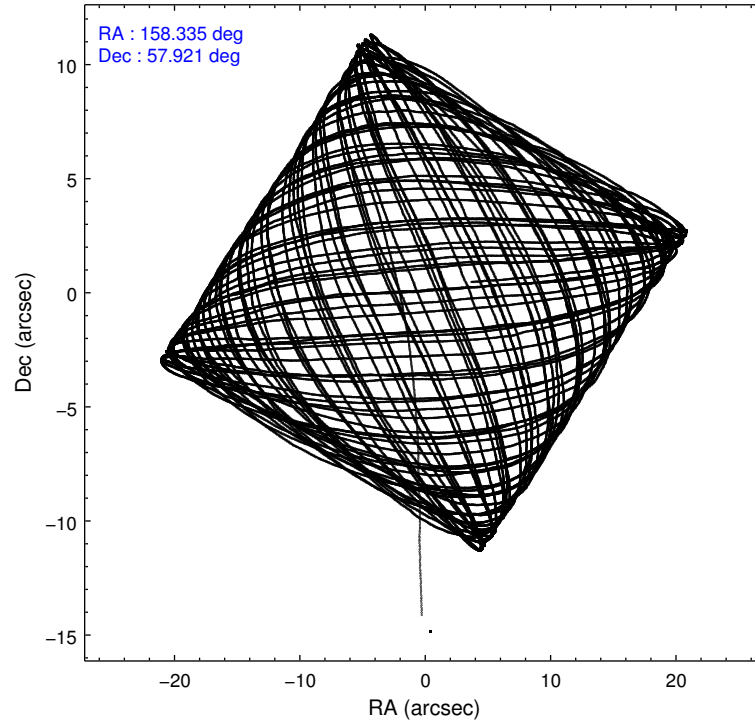
### 2.1.4 Events

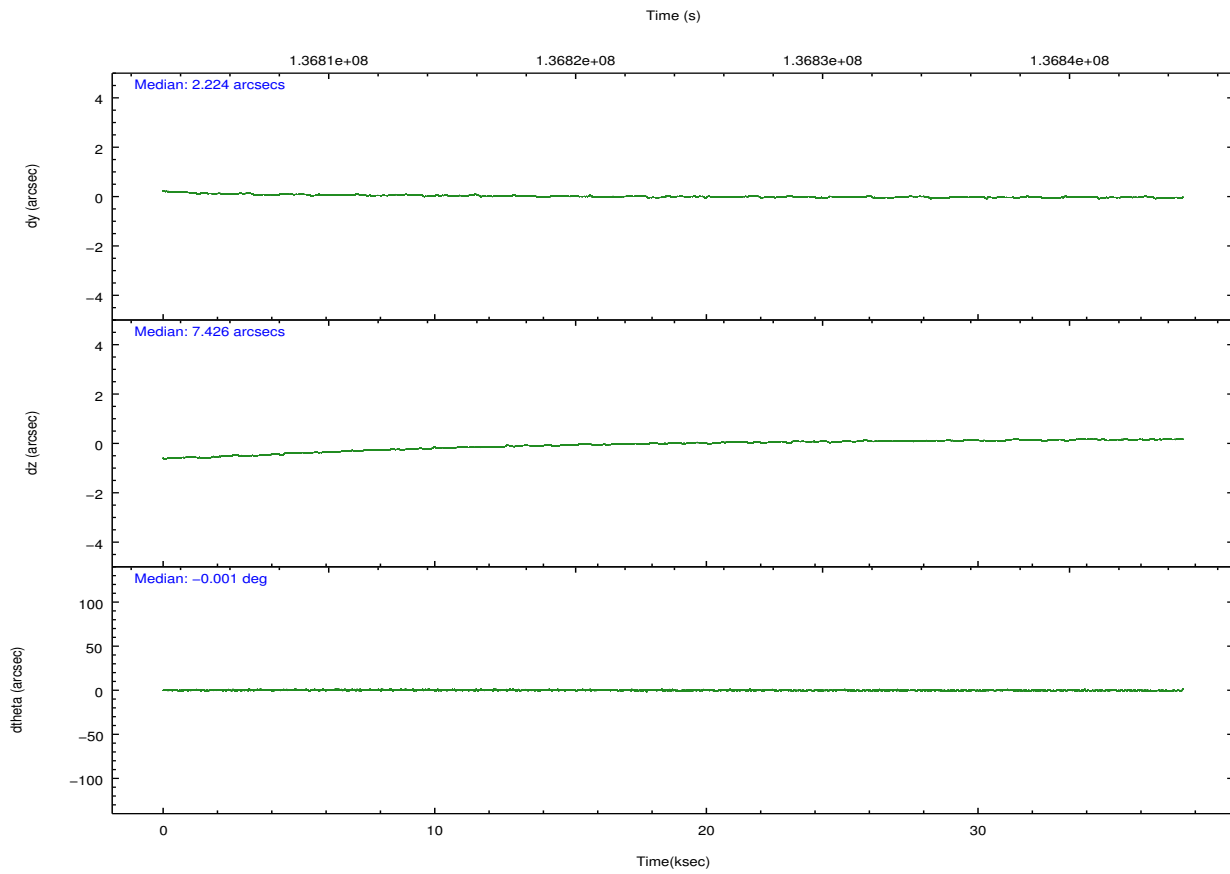
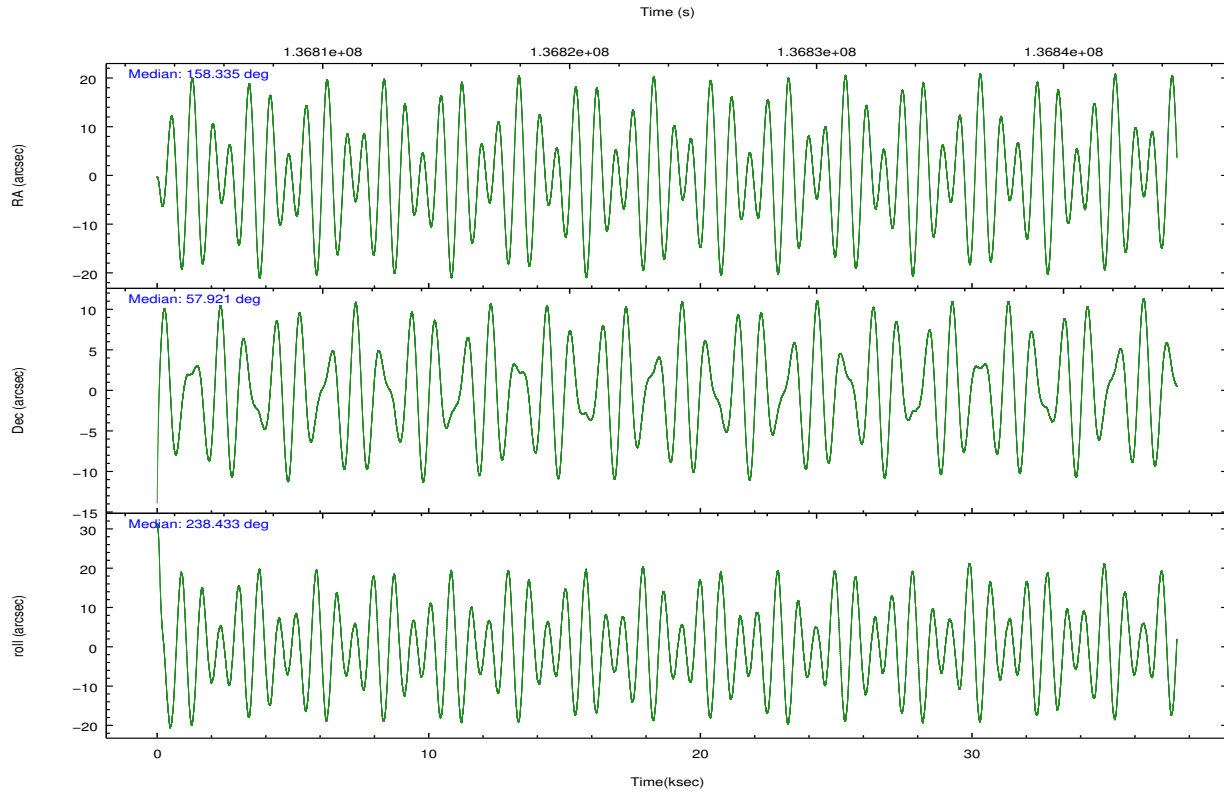
	ccd 0	ccd 1	ccd 2	ccd 3	ccd 6	ccd 7		ccd 0	ccd 1	ccd 2	ccd 3	ccd 6	ccd 7
level 1 events	229521	230757	252132	253737	261656	336341	grade 0 events	16107	16128	16180	15651	15686	14246
rejected events	195481	195719	218775	220875	227483	189023		7%	6%	6%	6%	5%	4%
rejected %	85%	84%	86%	87%	86%	56%	grade 1 events	138	113	128	132	149	304
								0%	0%	0%	0%	0%	0%
							grade 2 events	6866	6728	6506	6349	6467	28476
								2%	2%	2%	2%	2%	8%
							grade 3 events	2979	3170	2776	2805	3076	13020
								1%	1%	1%	1%	1%	3%
							grade 4 events	2768	3192	2776	2818	2951	12688
								1%	1%	1%	1%	1%	3%
							grade 5 events	9082	9775	8772	10006	10699	30887
								3%	4%	3%	3%	4%	9%
							grade 6 events	5337	5840	5136	5257	6010	78943
								2%	2%	2%	2%	2%	23%
							grade 7 events	186244	185811	209858	210719	216618	157777
								81%	80%	83%	83%	82%	46%

## 2.2 Compared Parameters

Parameter	Planned	Actual	Parameter	Planned	Actual
Instrument	ACIS	ACIS	Obspar format version number	7	7
Detector	ACIS-012367	ACIS-012367	Obspar file type	PREDICTED	ACTUAL
Grating	NONE	NONE	Obspar update status	NONE	UPDATED
Data mode	VFAINT	VFAINT	Number of optional ACIS chips dropped	0	0
Observation mode	POINTING	POINTING	On-chip summing requested	N	N
[deg] Pointing RA	158.335757	158.3345228679966	Subarray requested	NONE	NONE
[deg] Pointing Dec	57.948290	57.92091534336917	Alternating exposures requested	N	N
[deg] Pointing Roll	238.235202	238.4449367557562	[s] Primary exposure time	0.000000	3.2
[mm] SIM focus pos	-0.782348	-0.7809083437167272			
[mm] SIM defocus	0	0.001439871863259334			
[mm] SIM translation stage pos	-233.592463	-233.5874344608287			
[mm] SIM translation stage offset	0	-0.005018542100998502			
[s] Observation start time (MET)	136805321.184000	136804301.60205			
Observation start date	2002-05-03T09:27:37	2002-05-03T09:11:41			
[s] Observation end time (MET)	136842712.184000	136843026.61613			
Observation end date	2002-05-03T19:50:48	2002-05-03T19:57:06			
Read mode	TIMED	TIMED			

## 2.3 Aspect





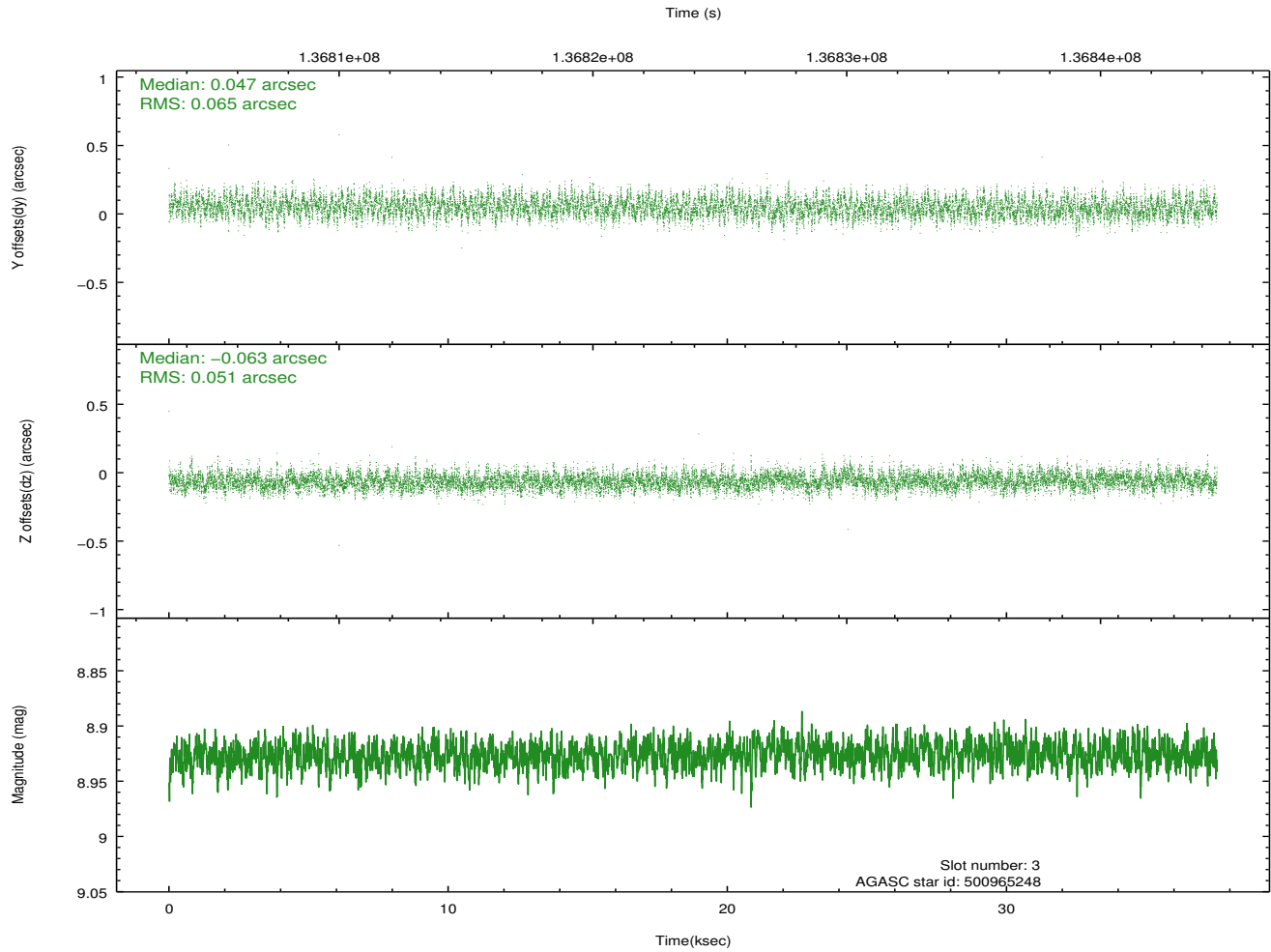
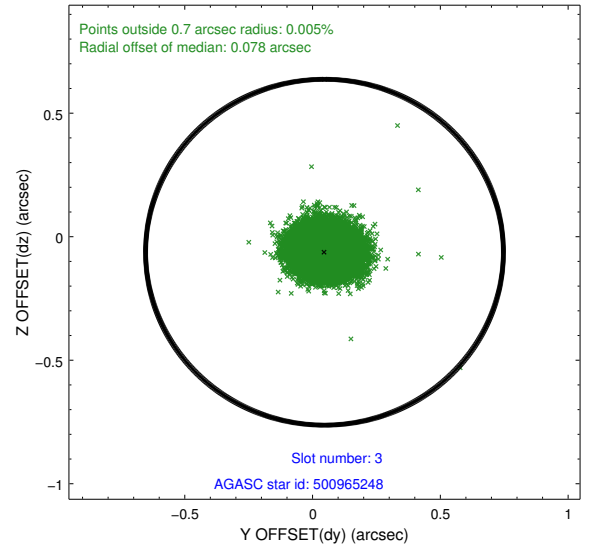
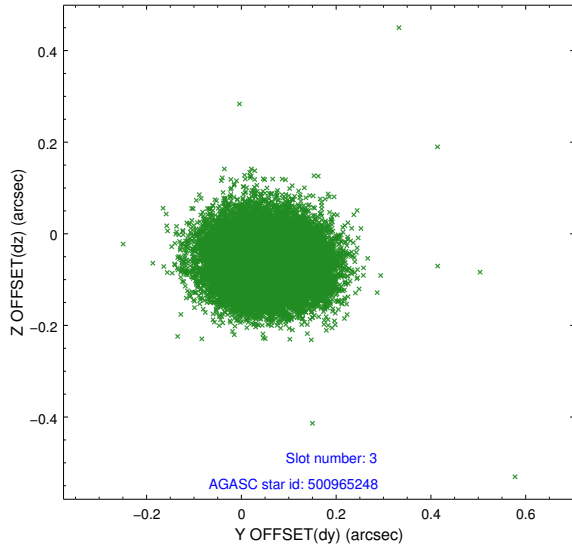
### Slot Statistics

slot	status	id	mag	n_pts	med_dy	med_dz	dr1	dr2	ra	dec	mean_y	mean_z
0	FID	ACIS-I-1	7.24	9157	-0.009	0.037	0.011	0.021	0.000000	0.000000	937.55	-830.73
1	FID	ACIS-I-5	7.24	9157	-0.044	0.048	0.006	0.011	0.000000	0.000000	-1810.54	1066.81
2	FID	ACIS-I-6	7.26	9157	-0.038	-0.015	0.010	0.020	0.000000	0.000000	403.08	1711.24
3	GUIDE	500965248	8.93	18303	0.047	-0.063	0.088	0.140	157.040068	57.653140	2198.45	-1574.94
4	GUIDE	500959408	9.52	18294	0.095	-0.097	0.077	0.126	157.361573	57.862425	1235.21	-1430.68
5	GUIDE	500962432	9.53	18306	-0.053	0.027	0.097	0.155	158.977500	58.020820	-869.91	899.25
6	GUIDE	500965384	9.79	18298	0.019	0.105	0.140	0.228	159.003342	57.936270	-639.19	1103.97
7	GUIDE	500961384	9.50	18283	-0.112	0.031	0.095	0.151	159.416101	58.123584	-1630.83	1404.78

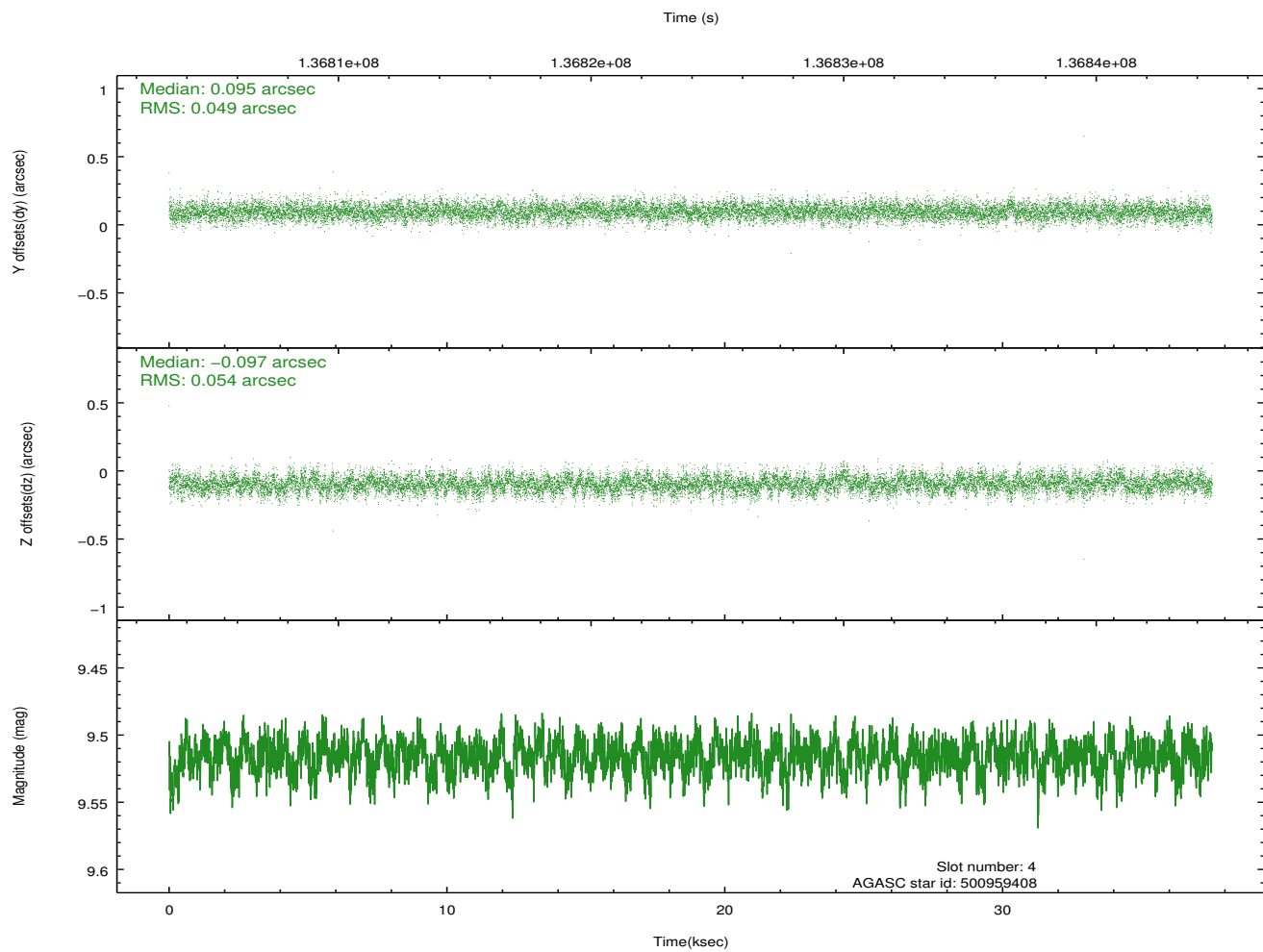
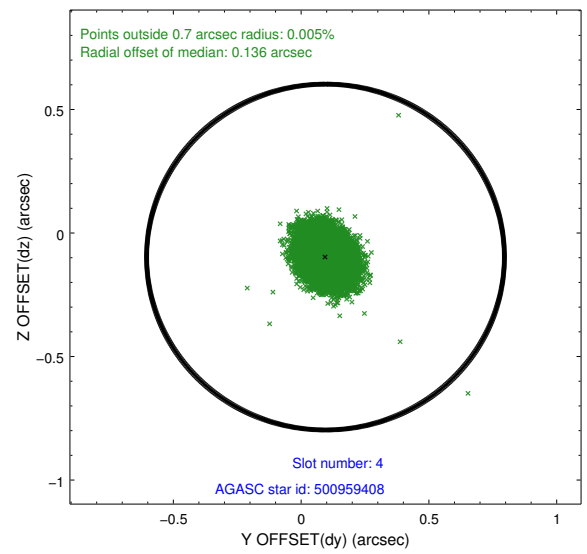
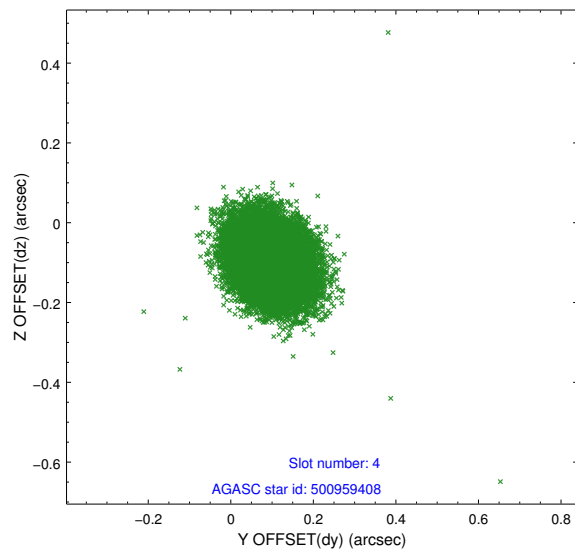
∞

## 2.4 Star Slots

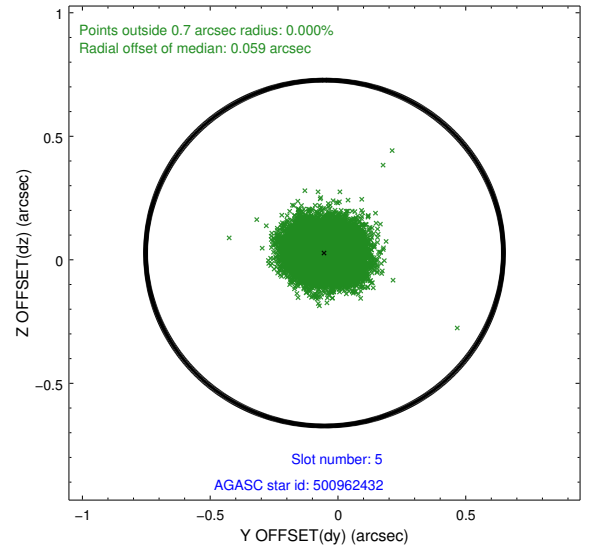
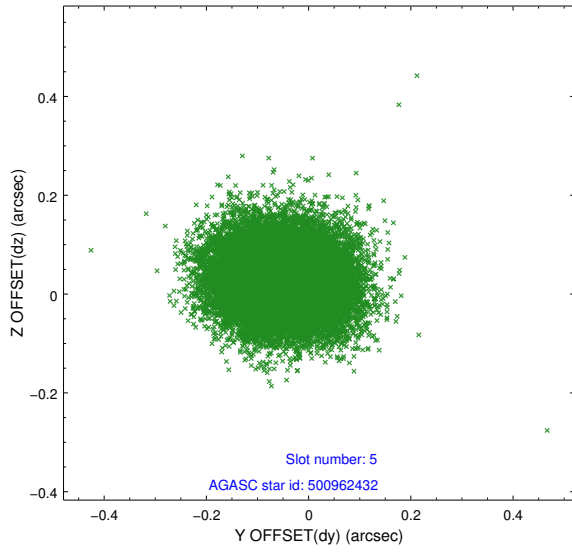
### 2.4.1 Slot 3



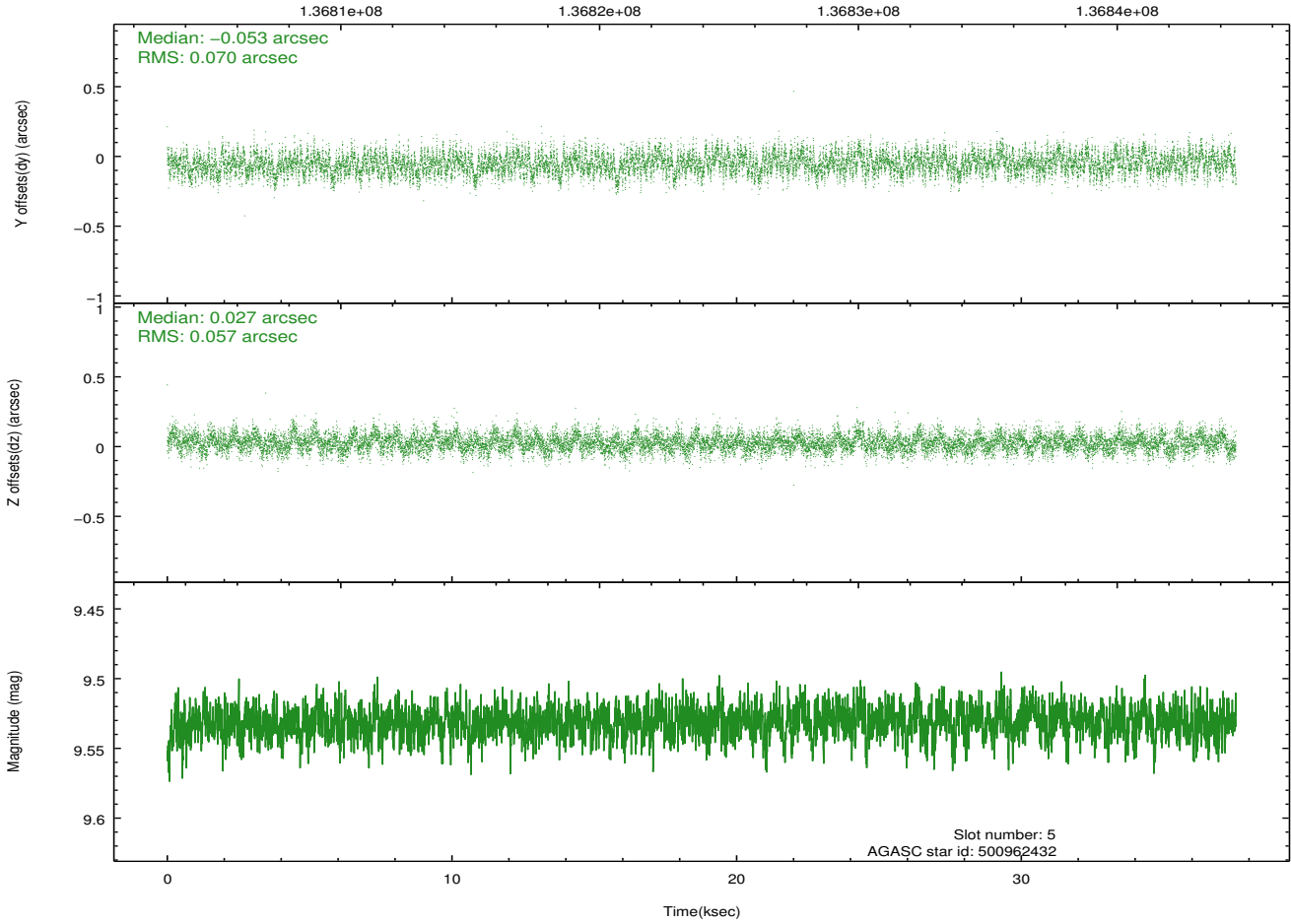
## 2.4.2 Slot 4



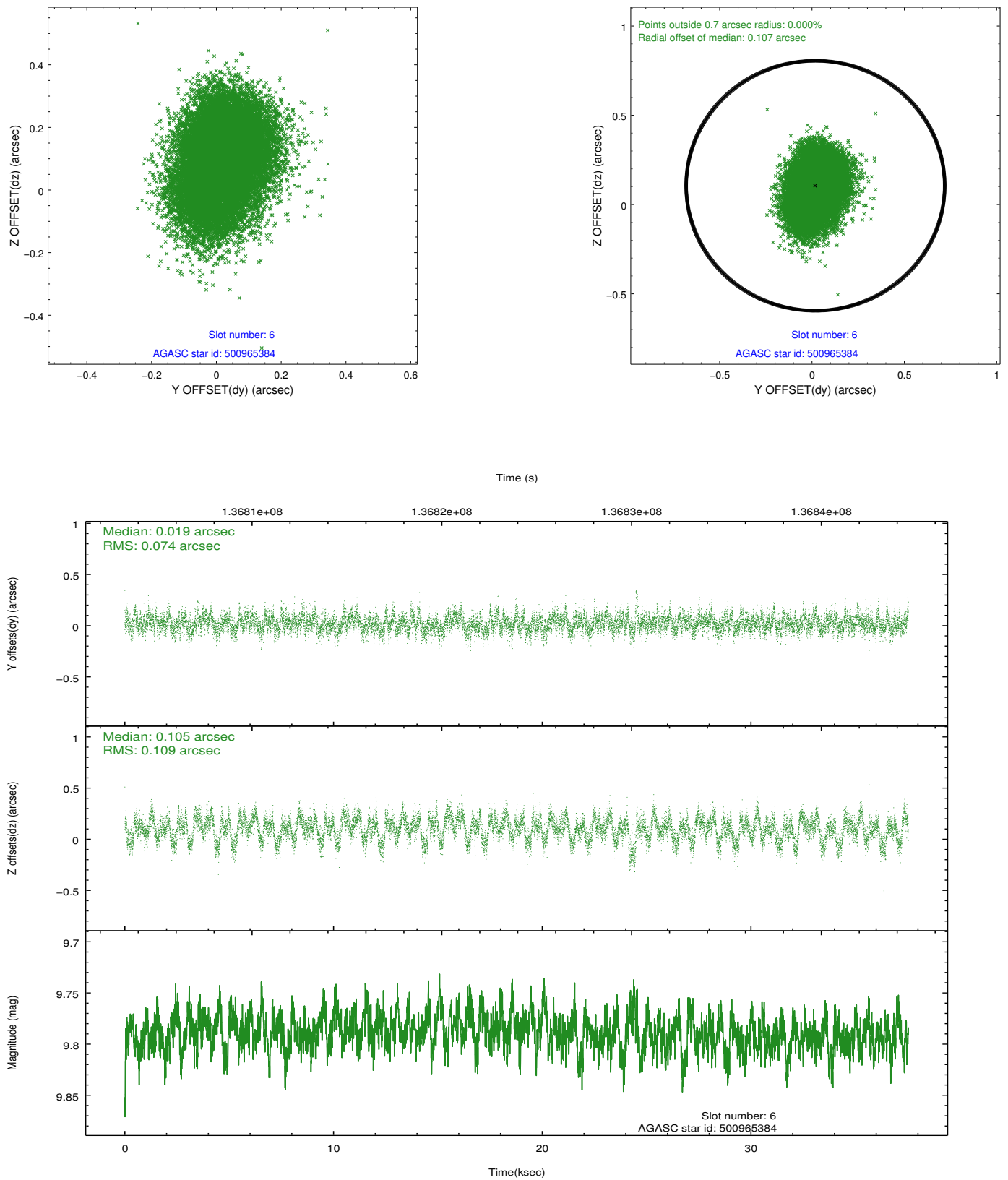
### 2.4.3 Slot 5



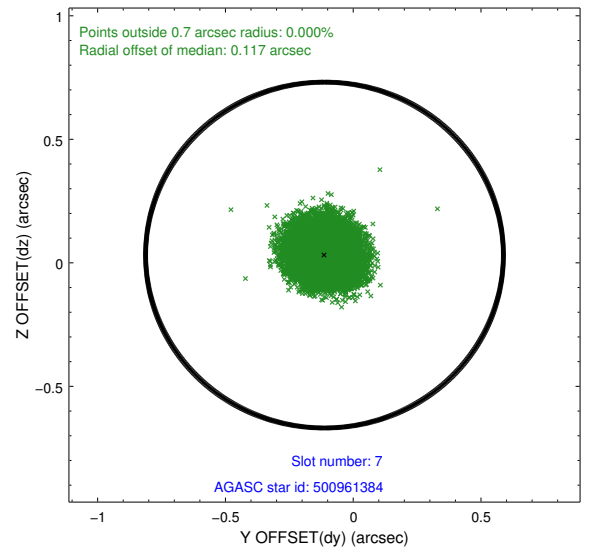
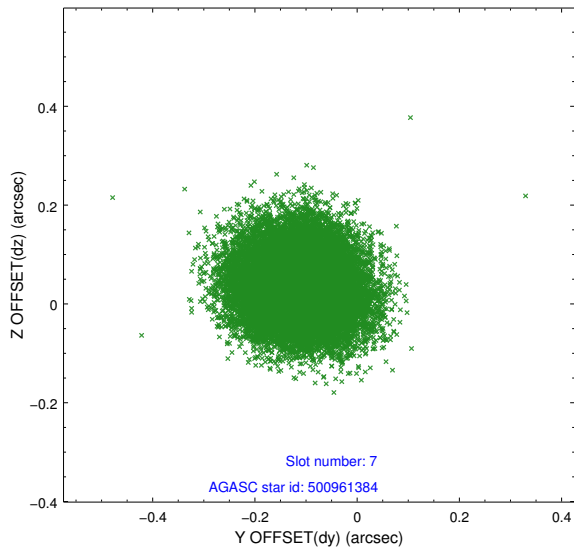
Time (s)



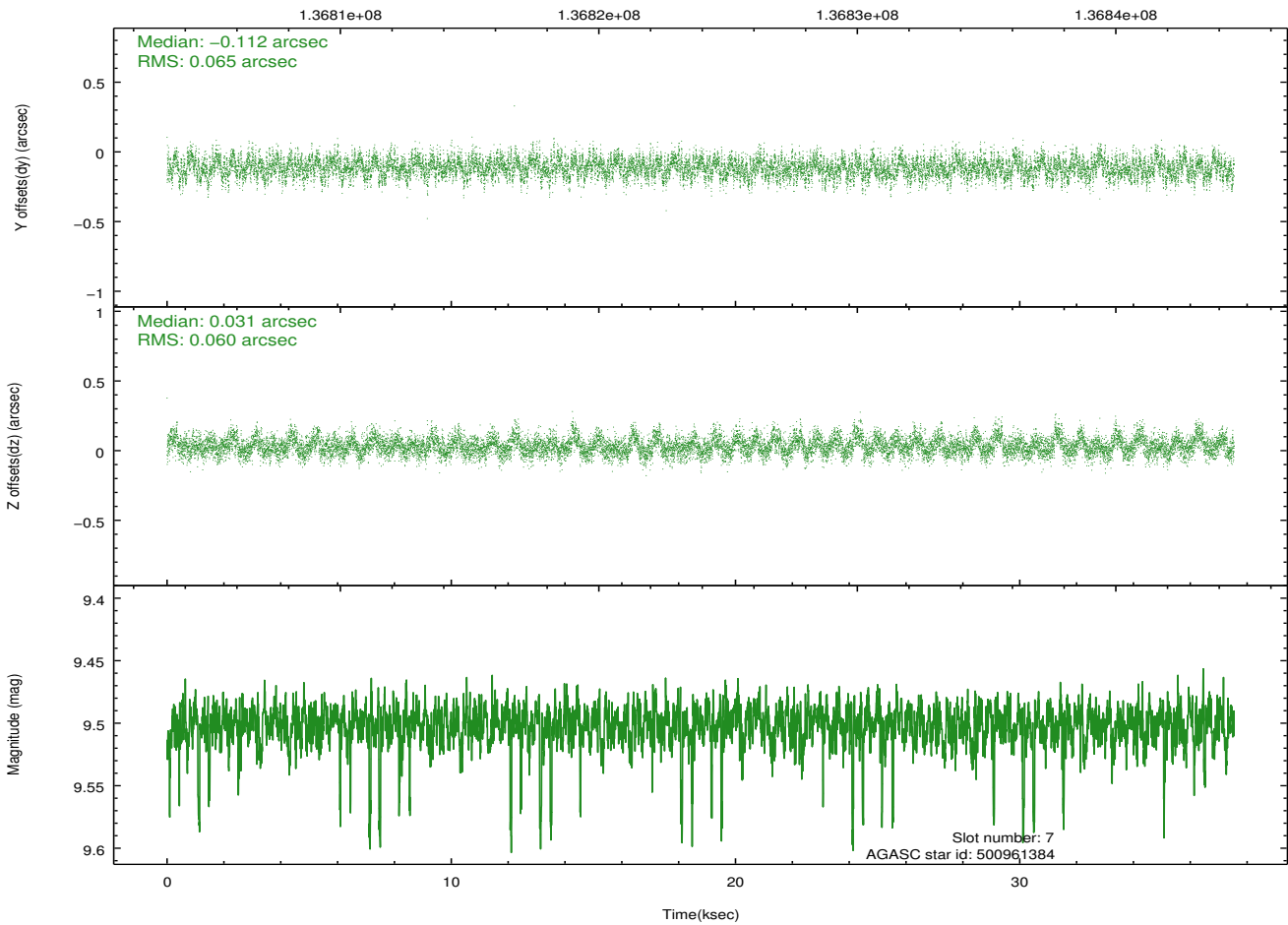
## 2.4.4 Slot 6



## 2.4.5 Slot 7

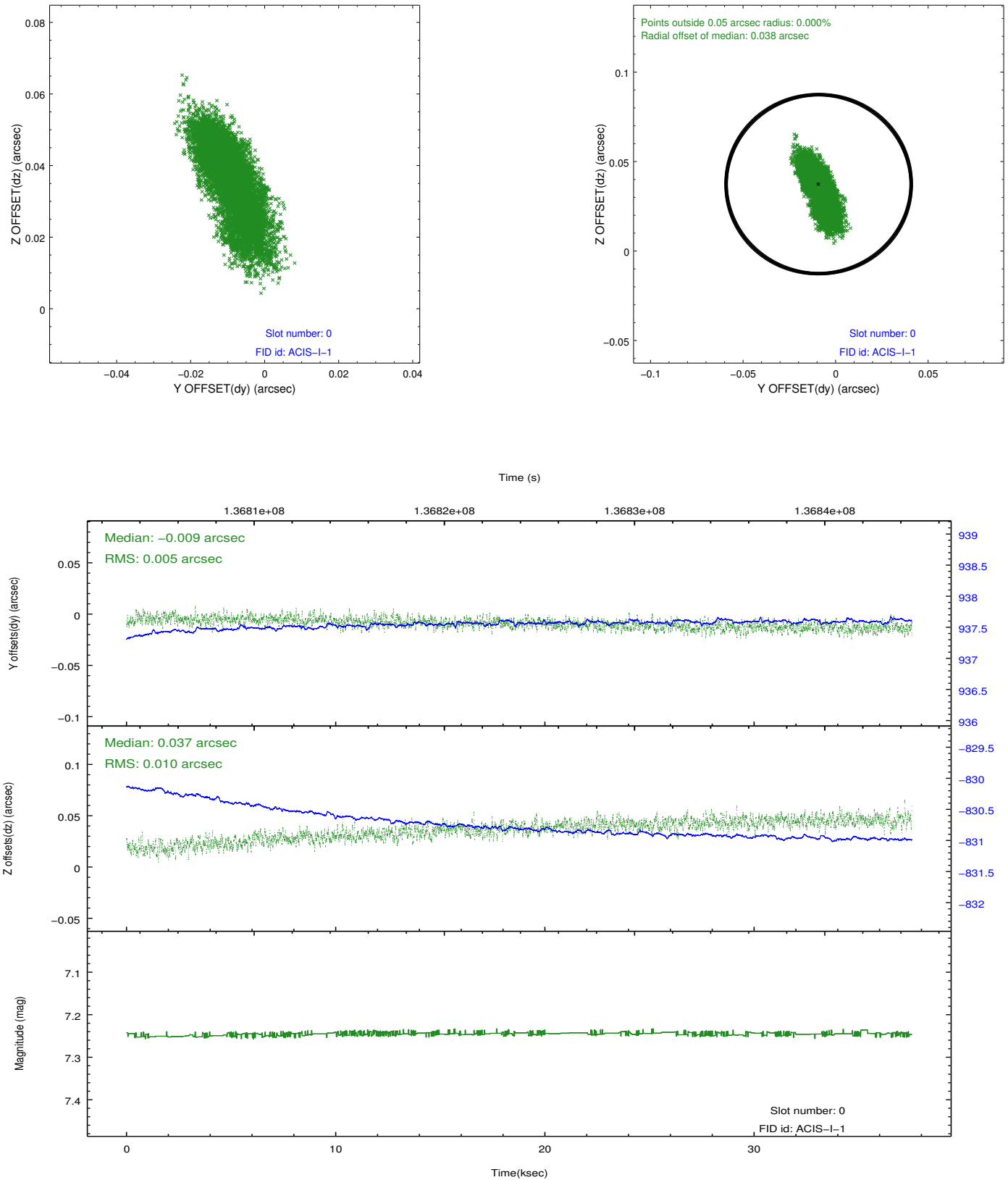


Time (s)

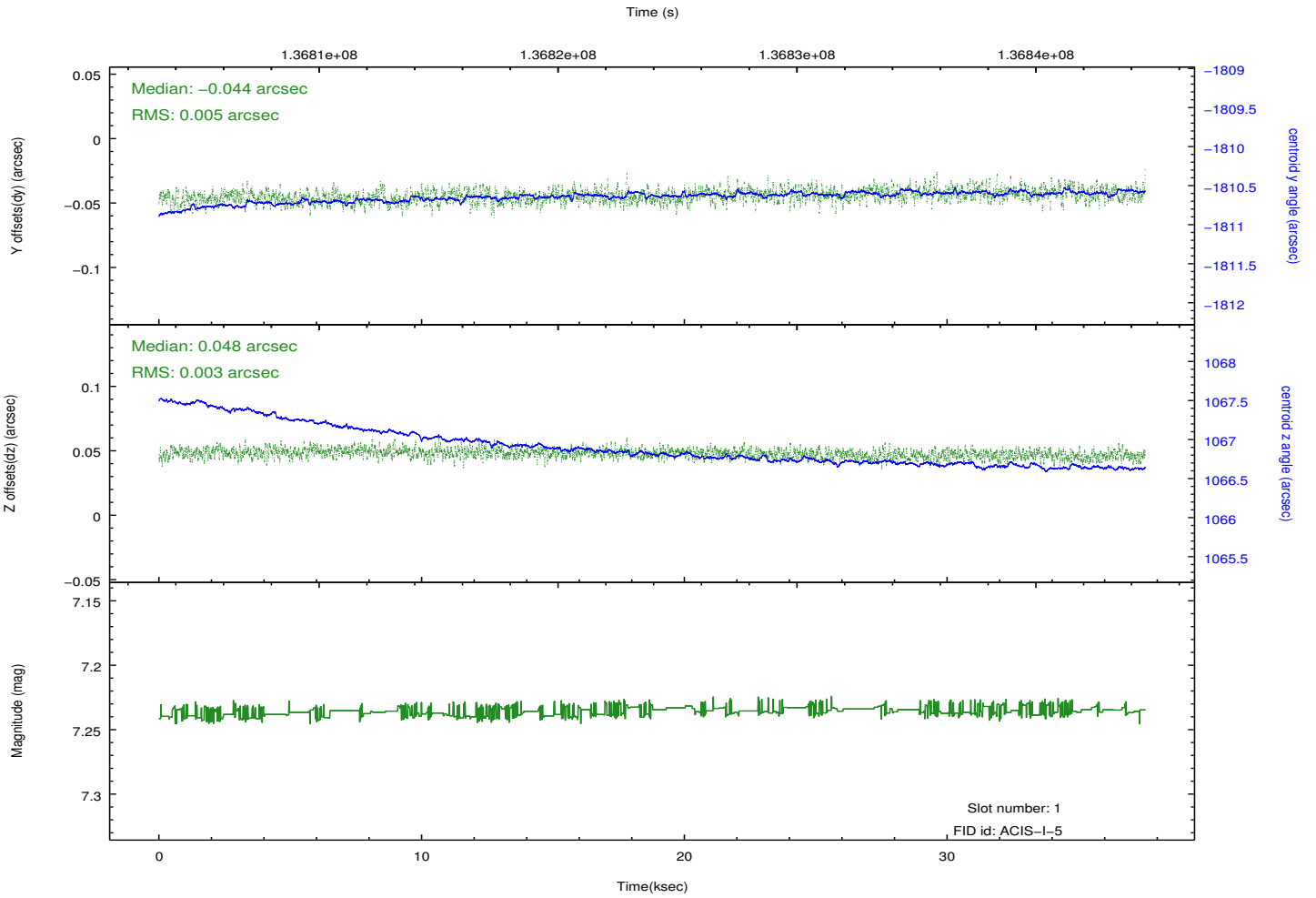
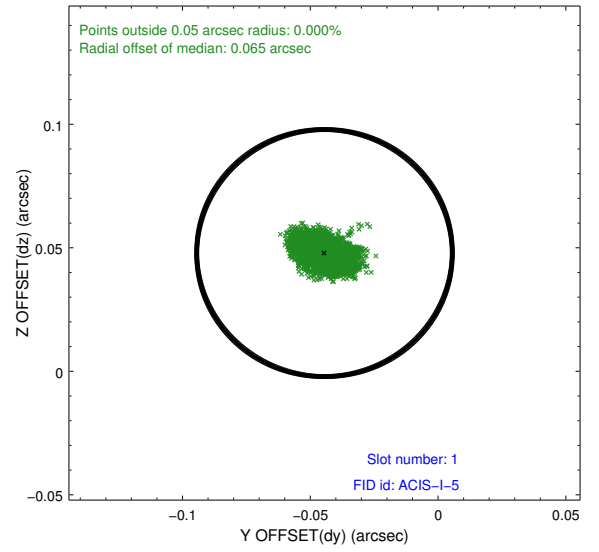
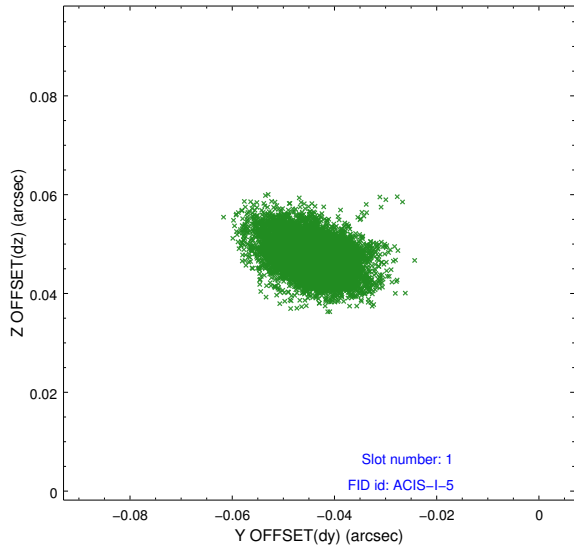


## 2.5 FID Slots

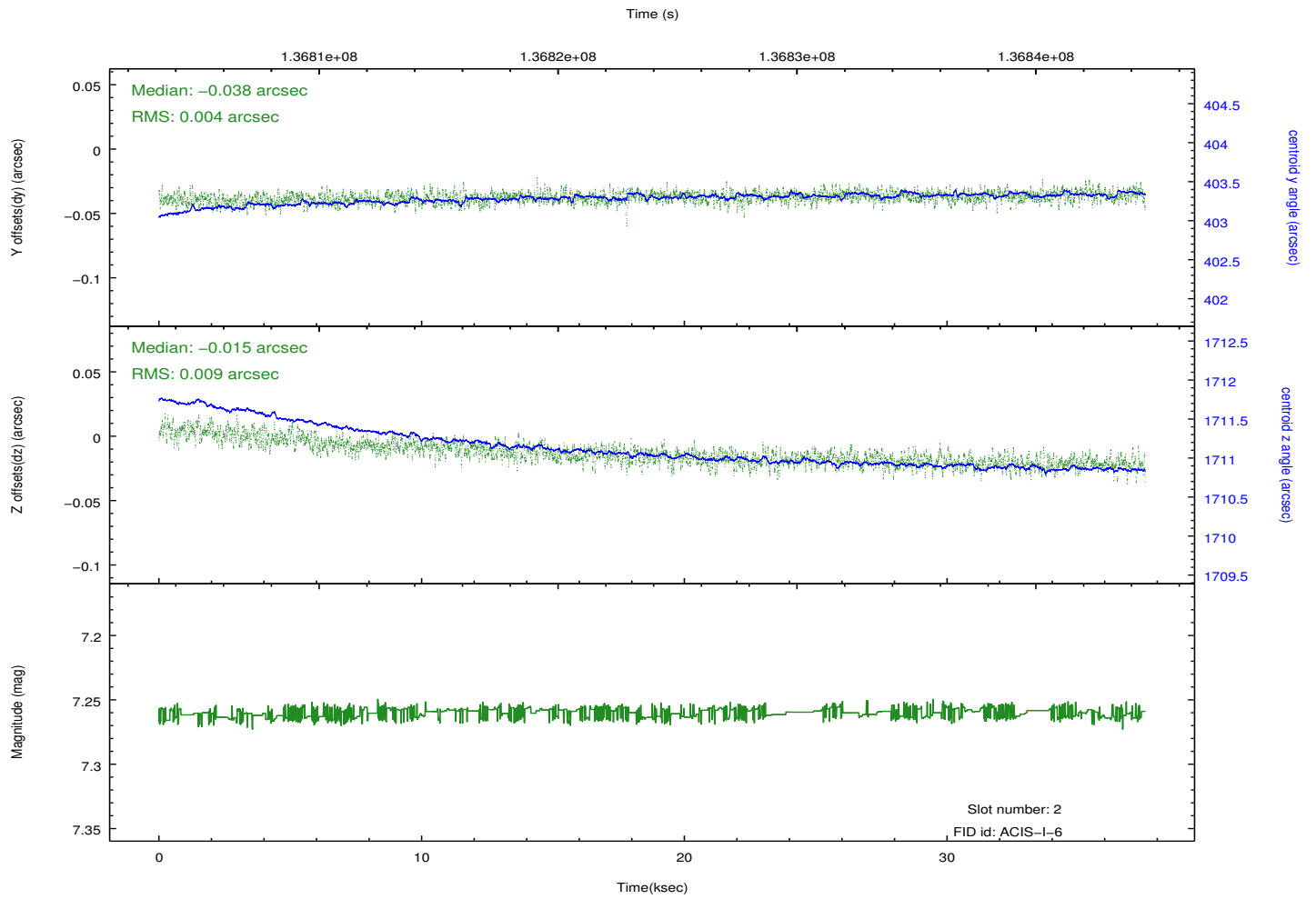
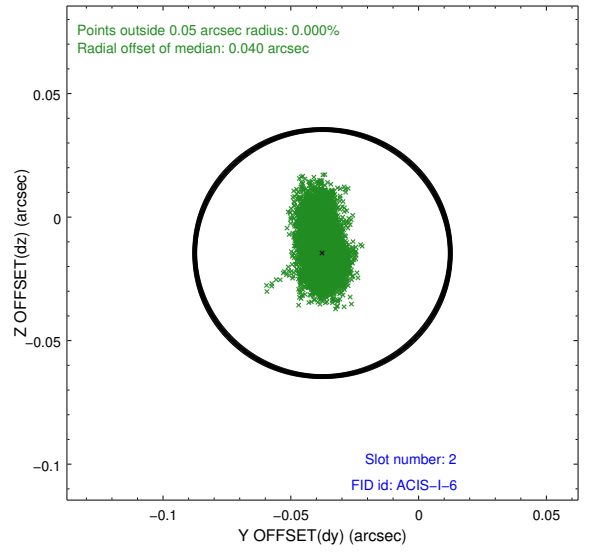
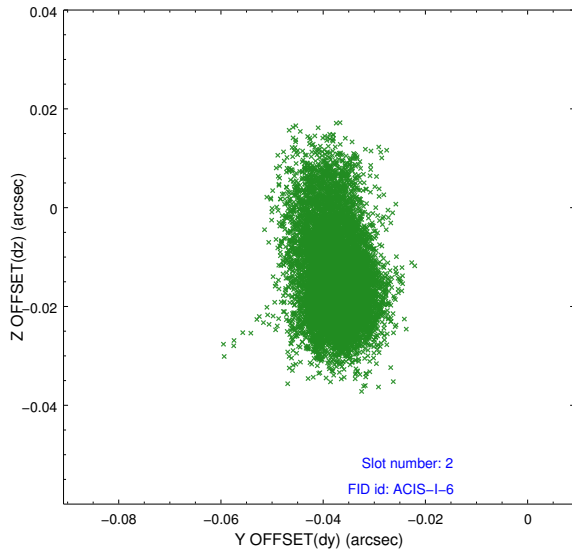
### 2.5.1 Slot 0



## 2.5.2 Slot 1



### 2.5.3 Slot 2



# A Summary

## A.1 Status

V&V Scientist	Beth Sundheim
V&V Date (YYYY-MM-DD)	2012.10.16
V&V Edition	1
V&V Disposition and Status	OK
V&V Charge Time	37.465

## A.2 Comments