

# V&V Reference Report

## L2 ASCDS Version : 8.4.5

Observation 3513 - L2 Version 3  
Chandra X-Ray Center

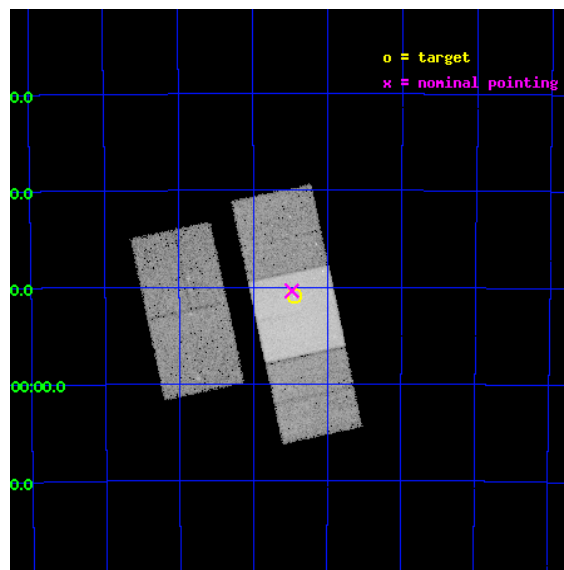
L2 Processing Date : Oct 22 2012

## Contents

<b>1</b>	<b>Front</b>	<b>2</b>
<b>2</b>	<b>OBI</b>	<b>3</b>
2.1	OBI . . . . .	3
2.1.1	Images . . . . .	3
2.1.2	Bias . . . . .	3
2.1.3	Parameters . . . . .	4
2.1.4	Events . . . . .	4
2.2	Compared Parameters . . . . .	5
2.3	Aspect . . . . .	6
2.4	Star Slots . . . . .	9
2.4.1	Slot 3 . . . . .	9
2.4.2	Slot 4 . . . . .	10
2.4.3	Slot 5 . . . . .	11
2.4.4	Slot 6 . . . . .	12
2.4.5	Slot 7 . . . . .	13
2.5	FID Slots . . . . .	14
2.5.1	Slot 0 . . . . .	14
2.5.2	Slot 1 . . . . .	15
2.5.3	Slot 2 . . . . .	16
<b>A</b>	<b>Summary</b>	<b>17</b>
A.1	Status . . . . .	17
A.2	Comments . . . . .	17

# 1 Front

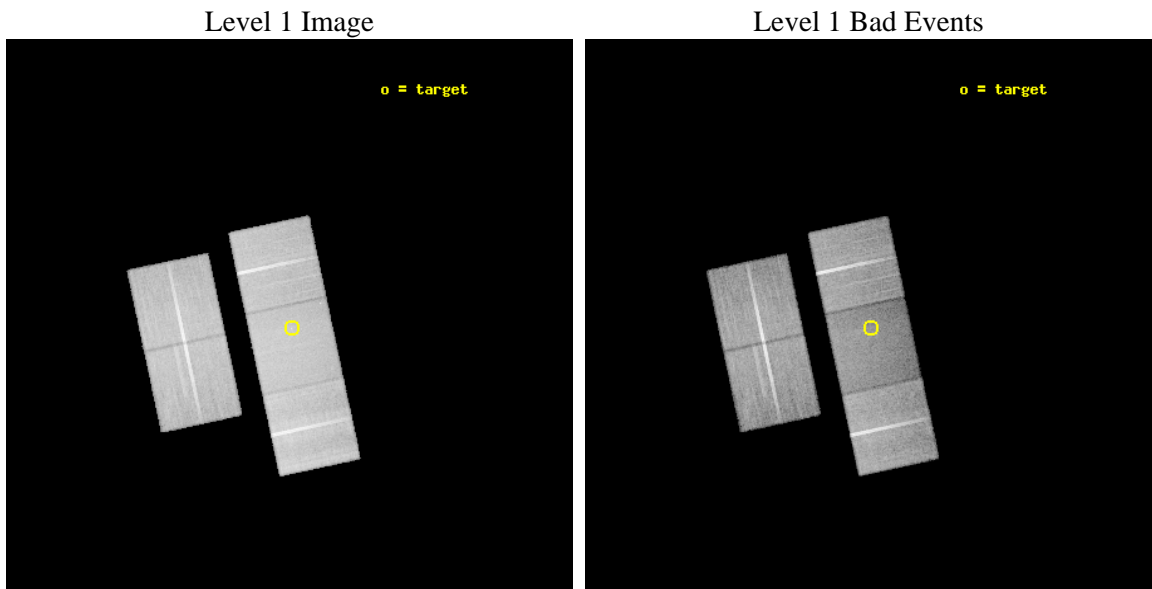
seq_num	500301	Sequence number
obs_id	3513	Observation id
title	ALTERNATE-PSR J1509-5850 : VELA-LIKE PULSAR FOUND IN THE PARKES MULTIBEAM PULSAR SURVEY	Proposal title
observer	Professor Gordon Garmire	Principal investigator
object	PSR J1509-5850	Source name
dtcycle	0	&#160
cycle	P	events from which exps? Prim/Second/Both
ra_targ	227.362917	Observer's specified target RA [deg]
dec_targ	-58.848889	Observer's specified target Dec [deg]
ra_nom	227.36996271965	Nominal RA [deg]
dec_nom	-58.839959952089	Nominal Dec [deg]
roll_nom	77.909240233627	Nominal Roll [deg]
revision	3	Processing version of data
ontime	40141.899922788	Sum of GTIs [s]
liveltime	39617.41644826	Livetime [s]
ontime2	40141.899922788	Sum of GTIs [s]
ontime3	40138.758962542	Sum of GTIs [s]
ontime6	40132.477002174	Sum of GTIs [s]
ontime7	40141.899922788	Sum of GTIs [s]
ontime8	40135.617972404	Sum of GTIs [s]
l2events	190416	Number of level 2 events



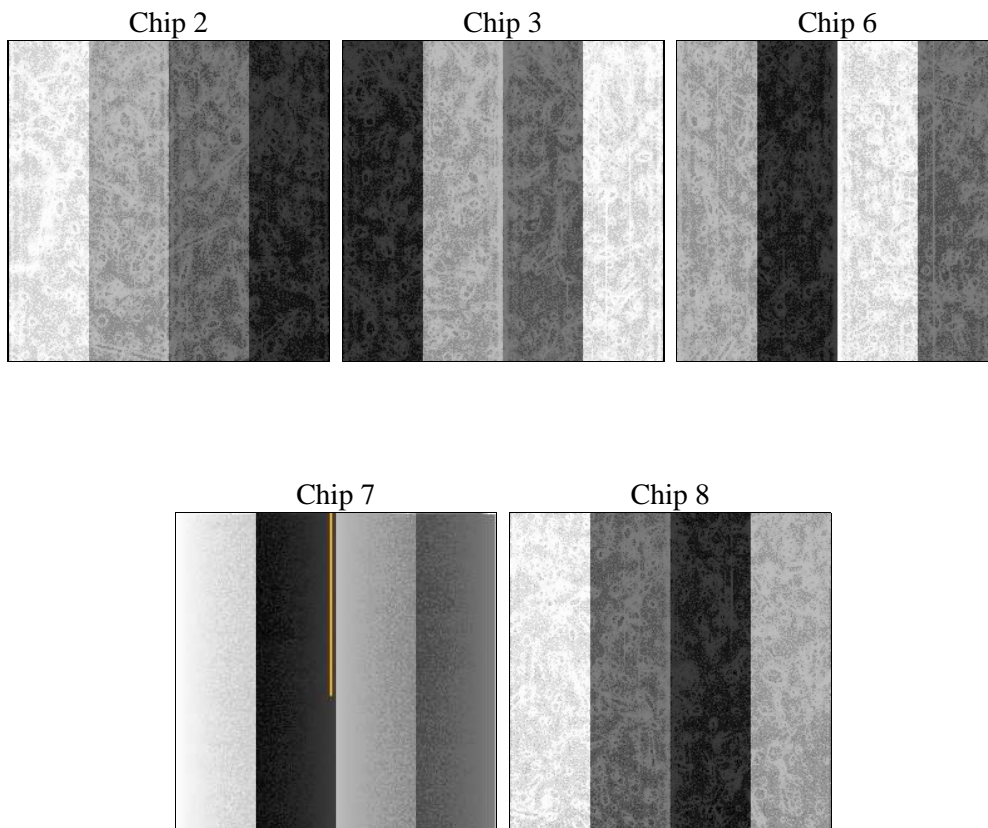
## 2 OBI

### 2.1 OBI

#### 2.1.1 Images



#### 2.1.2 Bias



### 2.1.3 Parameters

obi_num	0	Obi number	sched_exp_time	40000.000000	[s] Scheduled observation exposure time
ascdsver	8.4.5	Processing system revision	ontime	40141.899922788	Sum of GTIs [s]
caldbver	4.5.2	&#160	ontime2	40141.899922788	Sum of GTIs [s]
date	2012-10-22T08:38:20	Date and time of file creation	ontime3	40138.758962542	Sum of GTIs [s]
revision	3	Processing version of data	ontime6	40132.477002174	Sum of GTIs [s]
			ontime7	40141.899922788	Sum of GTIs [s]
			ontime8	40135.617972404	Sum of GTIs [s]
			l1events	1273938	Number of level 1 events

### 2.1.4 Events

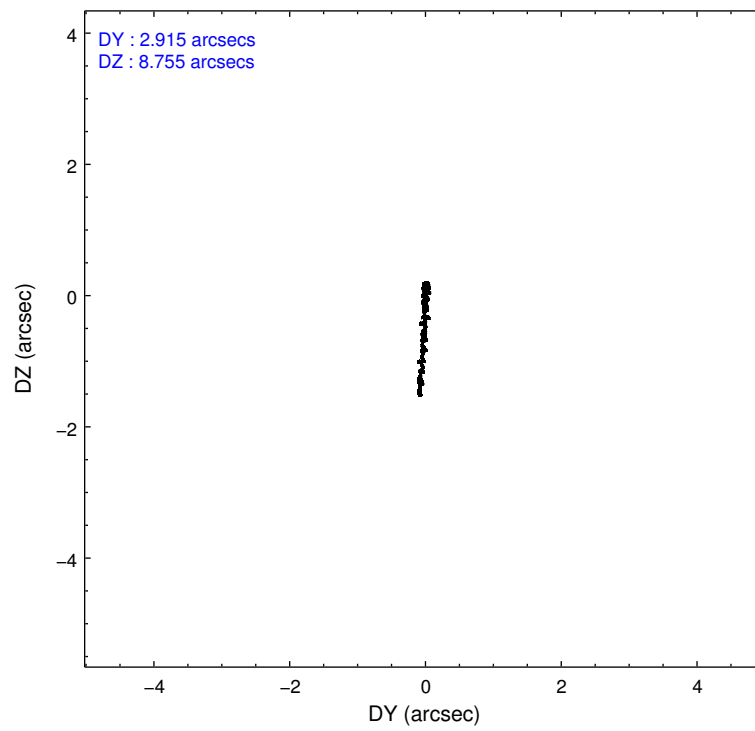
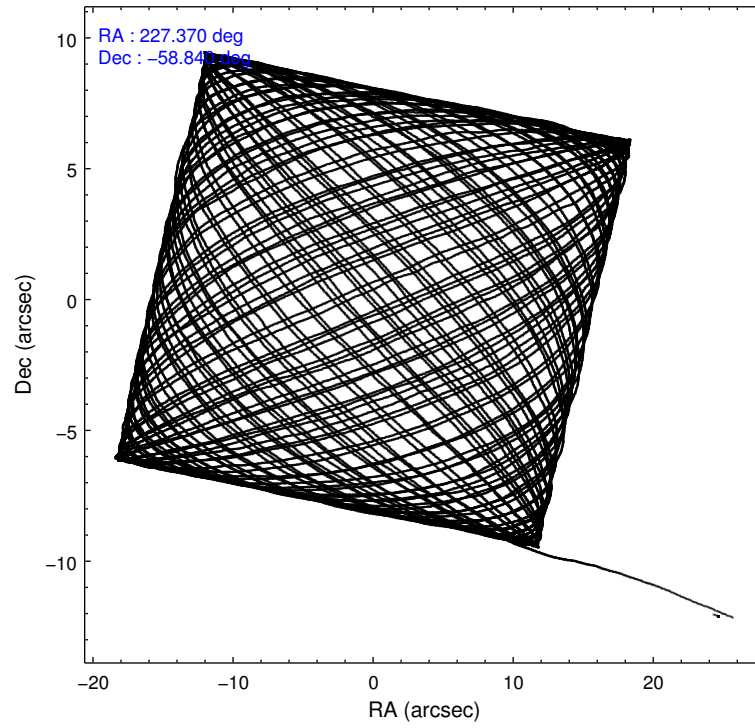
	ccd 2	ccd 3	ccd 6	ccd 7	ccd 8
level 1 events	241005	234350	244768	255177	298638
rejected events	218969	213204	219800	144198	236152
rejected %	90%	90%	89%	56%	79%

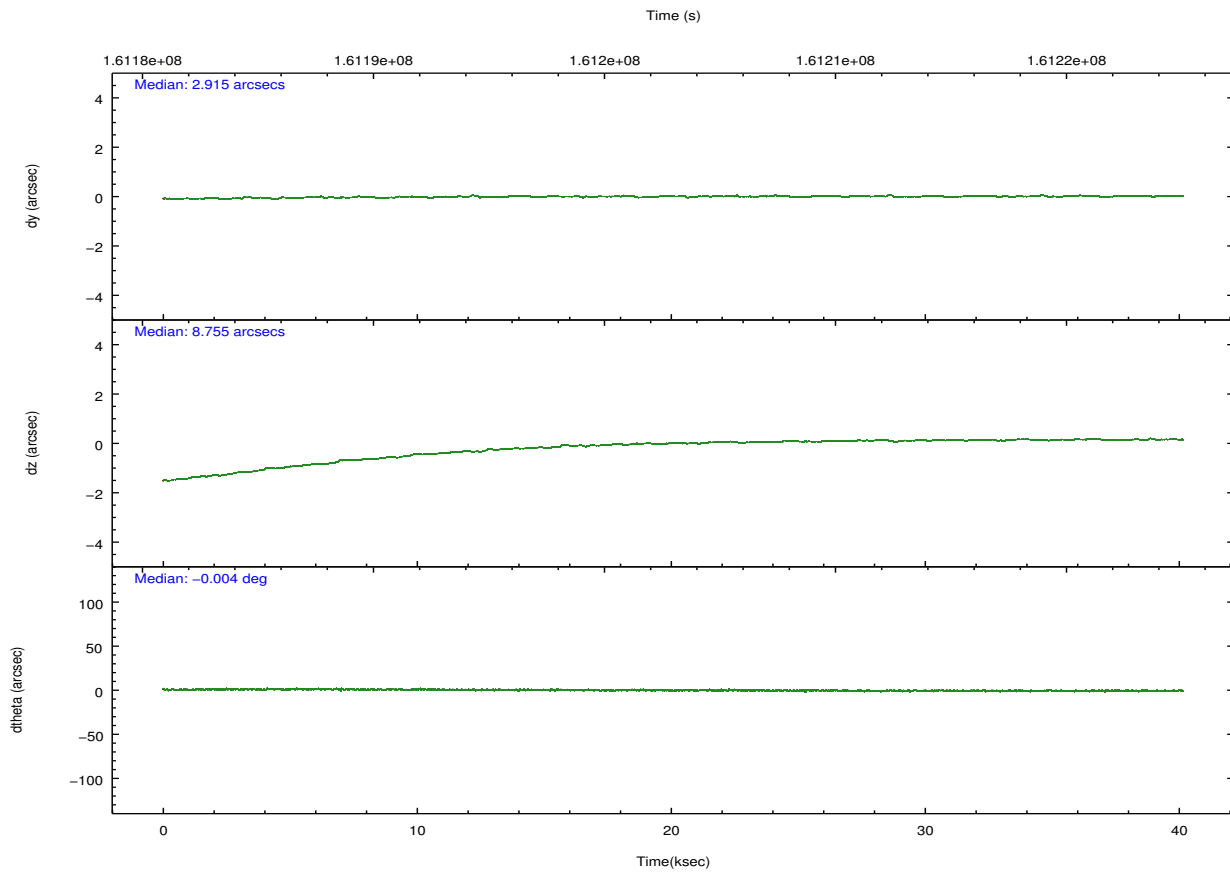
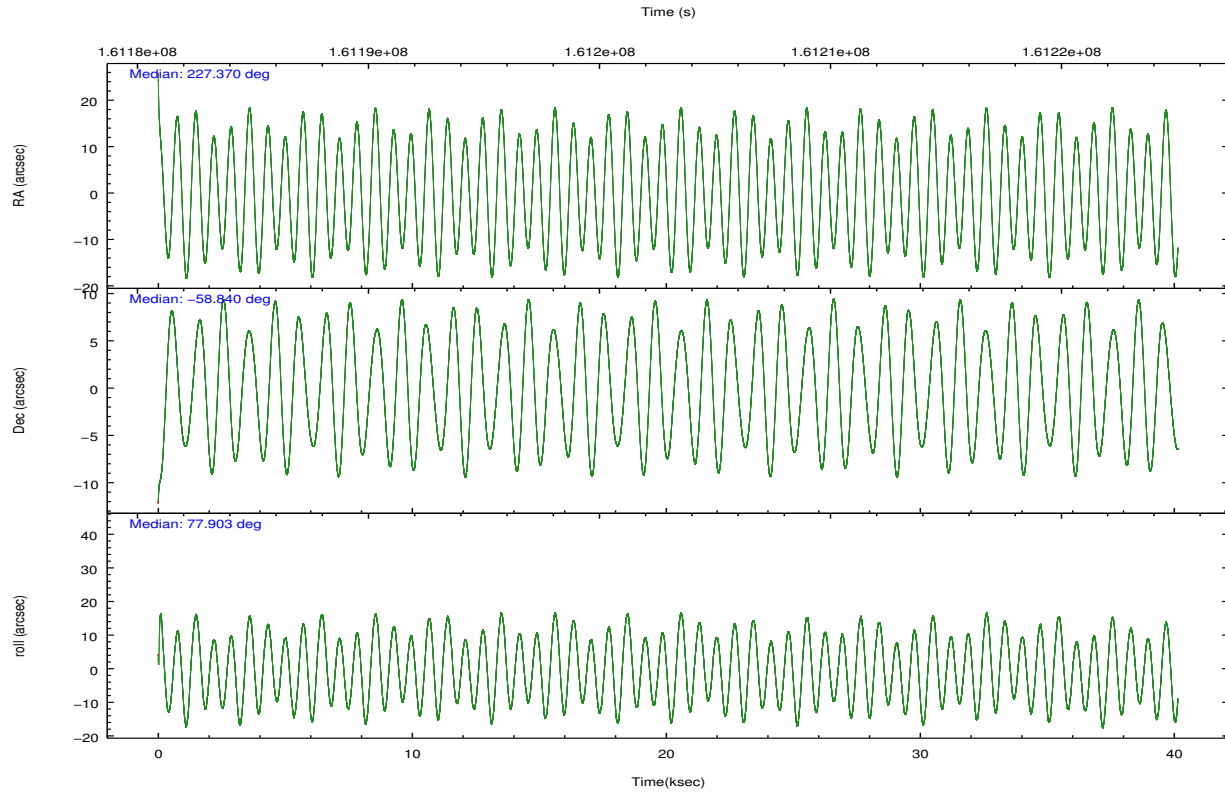
	ccd 2	ccd 3	ccd 6	ccd 7	ccd 8
grade 0 events	8571	8351	9832	10735	19733
	3%	3%	4%	4%	6%
grade 1 events	114	119	100	207	211
	0%	0%	0%	0%	0%
grade 2 events	5198	4580	5287	23415	14242
	2%	1%	2%	9%	4%
grade 3 events	2569	2529	2876	11134	7044
	1%	1%	1%	4%	2%
grade 4 events	2589	2439	2771	11013	6597
	1%	1%	1%	4%	2%
grade 5 events	7393	8775	9183	27072	12927
	3%	3%	3%	10%	4%
grade 6 events	4070	4156	5235	59355	17437
	1%	1%	2%	23%	5%
grade 7 events	210501	203401	209484	112246	220447
	87%	86%	85%	43%	73%

## 2.2 Compared Parameters

Parameter	Planned	Actual	Parameter	Planned	Actual
Instrument	ACIS	ACIS	Obspar format version number	7	7
Detector	ACIS-23678	ACIS-23678	Obspar file type	PREDICTED	ACTUAL
Grating	NONE	NONE	Obspar update status	NONE	UPDATED
Data mode	VFAINT	VFAINT	Number of optional ACIS chips dropped	0	0
Observation mode	POINTING	POINTING	On-chip summing requested	N	N
[deg] Pointing RA	227.386847	227.369962719651	Subarray requested	NONE	NONE
[deg] Pointing Dec	-58.865739	-58.8399599520891	Alternating exposures requested	N	N
[deg] Pointing Roll	77.767067	77.90924023362747	[s] Primary exposure time	0.000000	3.1
[mm] SIM focus pos	-0.684267	-0.6828225247311905			
[mm] SIM defocus	0	0.001444936568705701			
[mm] SIM translation stage pos	-190.132523	-190.1400660498719			
[mm] SIM translation stage offset	0	0.00754346686406393			
[s] Observation start time (MET)	161183039.184000	161181209.82282			
Observation start date	2003-02-09T13:02:55	2003-02-09T12:33:29			
[s] Observation end time (MET)	161223039.184000	161223778.0746			
Observation end date	2003-02-10T00:09:35	2003-02-10T00:22:58			
Read mode	TIMED	TIMED			

## 2.3 Aspect



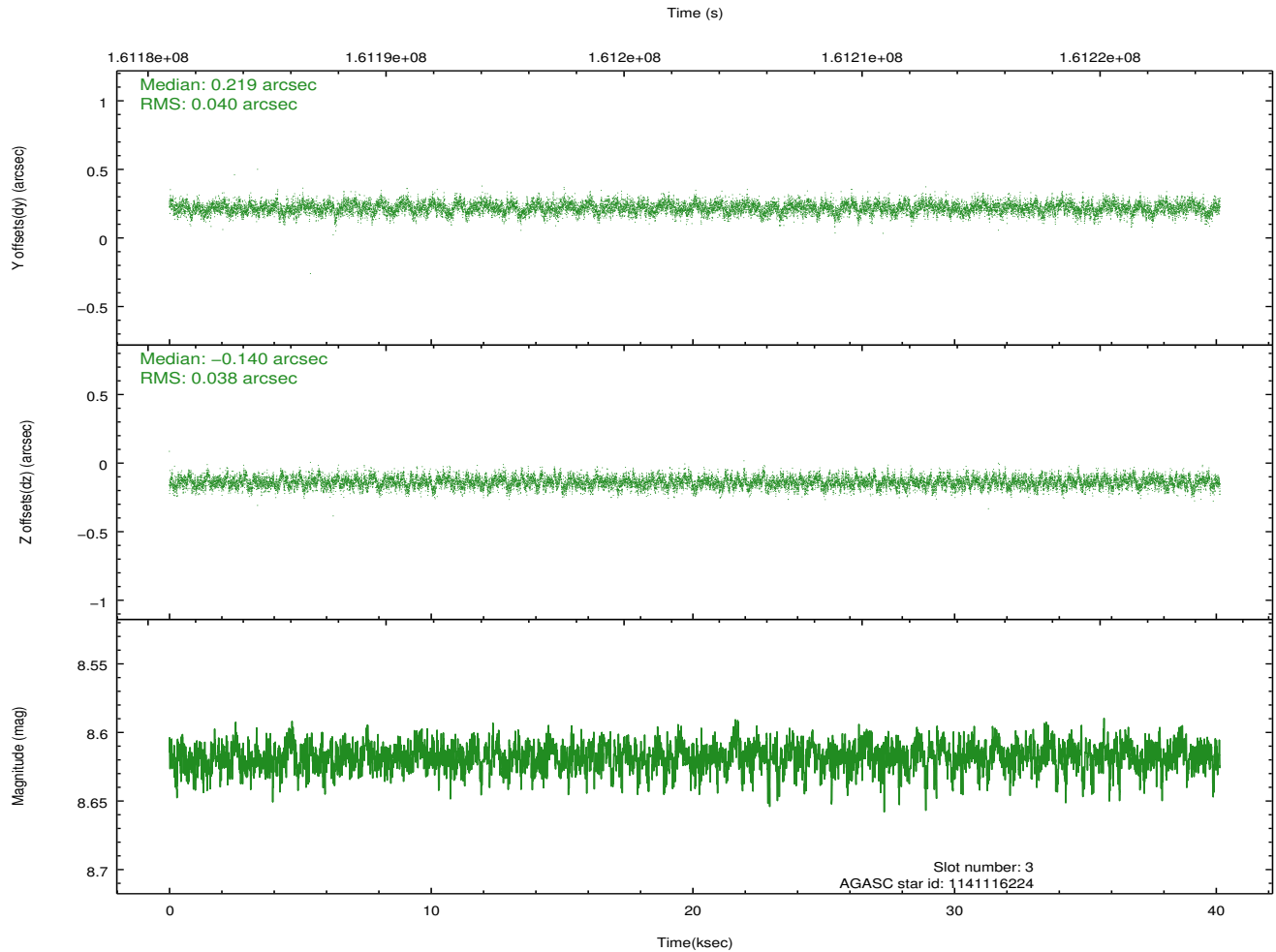
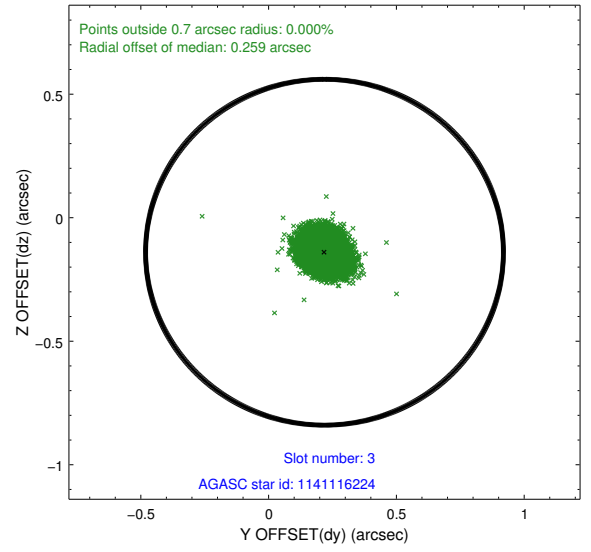
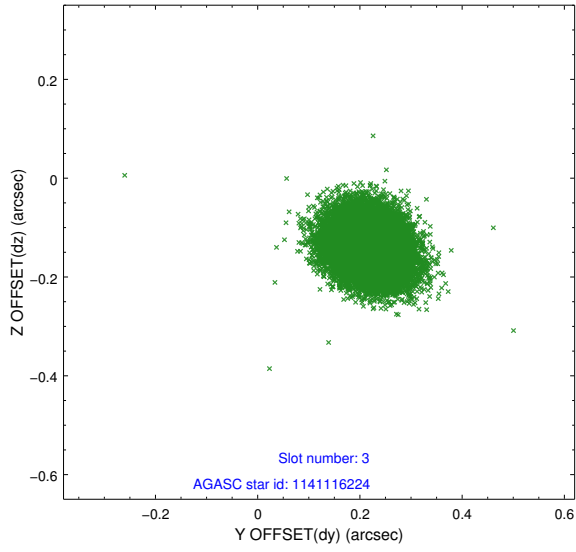


### Slot Statistics

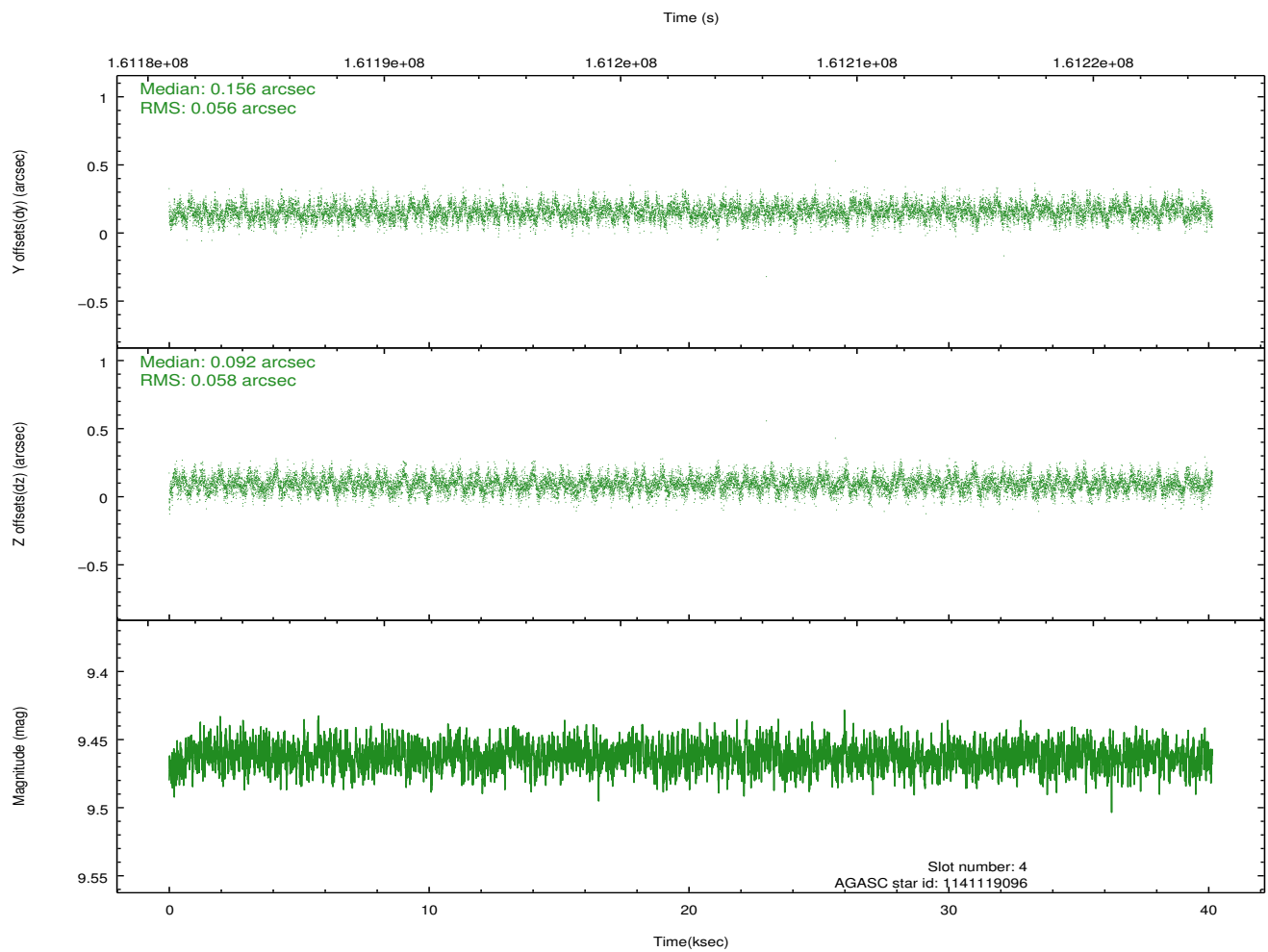
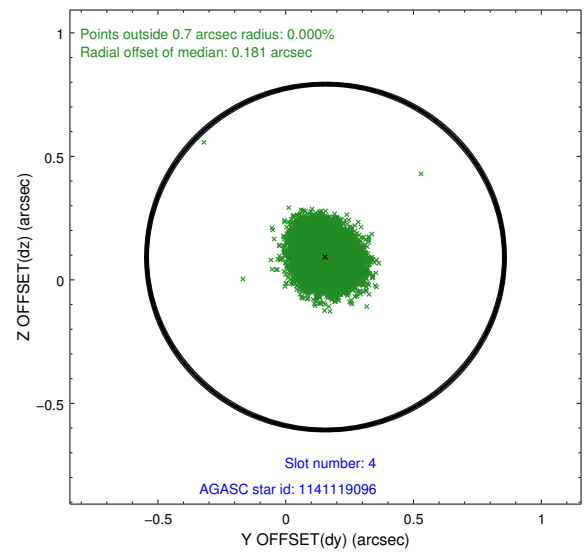
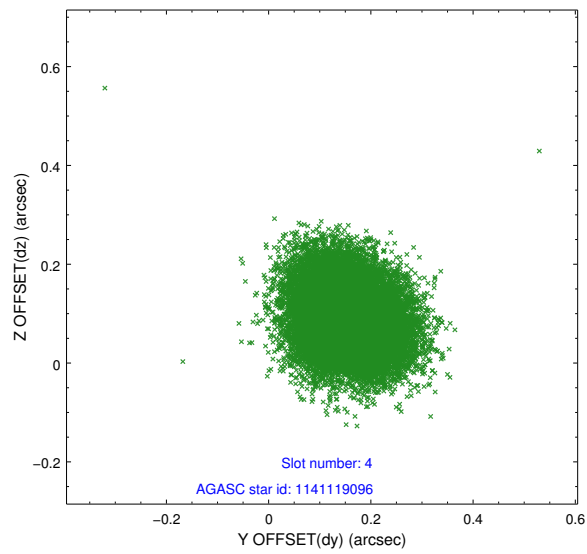
slot	status	id	mag	n_pts	med_dy	med_dz	dr1	dr2	ra	dec	mean_y	mean_z
0	FID	ACIS-S-2	7.11	9792	-0.026	-0.003	0.009	0.015	0.000000	0.000000	-755.56	-1729.74
1	FID	ACIS-S-4	7.20	9793	0.010	0.020	0.008	0.015	0.000000	0.000000	2157.73	178.77
2	FID	ACIS-S-6	7.36	9793	-0.012	-0.010	0.008	0.013	0.000000	0.000000	406.44	816.14
3	GUIDE	1141116224	8.62	19581	0.219	-0.140	0.058	0.095	226.951673	-59.390300	-2016.75	379.03
4	GUIDE	1141119096	9.46	19581	0.156	0.092	0.085	0.139	228.052751	-59.529718	-2084.09	-1695.53
5	GUIDE	1141120752	8.95	19579	-0.125	-0.201	0.089	0.143	226.972418	-58.548951	947.19	1002.11
6	GUIDE	1141118472	9.41	19575	-0.021	0.004	0.116	0.191	228.673319	-58.346269	2320.38	-1983.22
7	GUIDE	1141116424	9.02	19576	-0.224	0.245	0.083	0.132	228.804932	-58.574872	1560.26	-2384.55

## 2.4 Star Slots

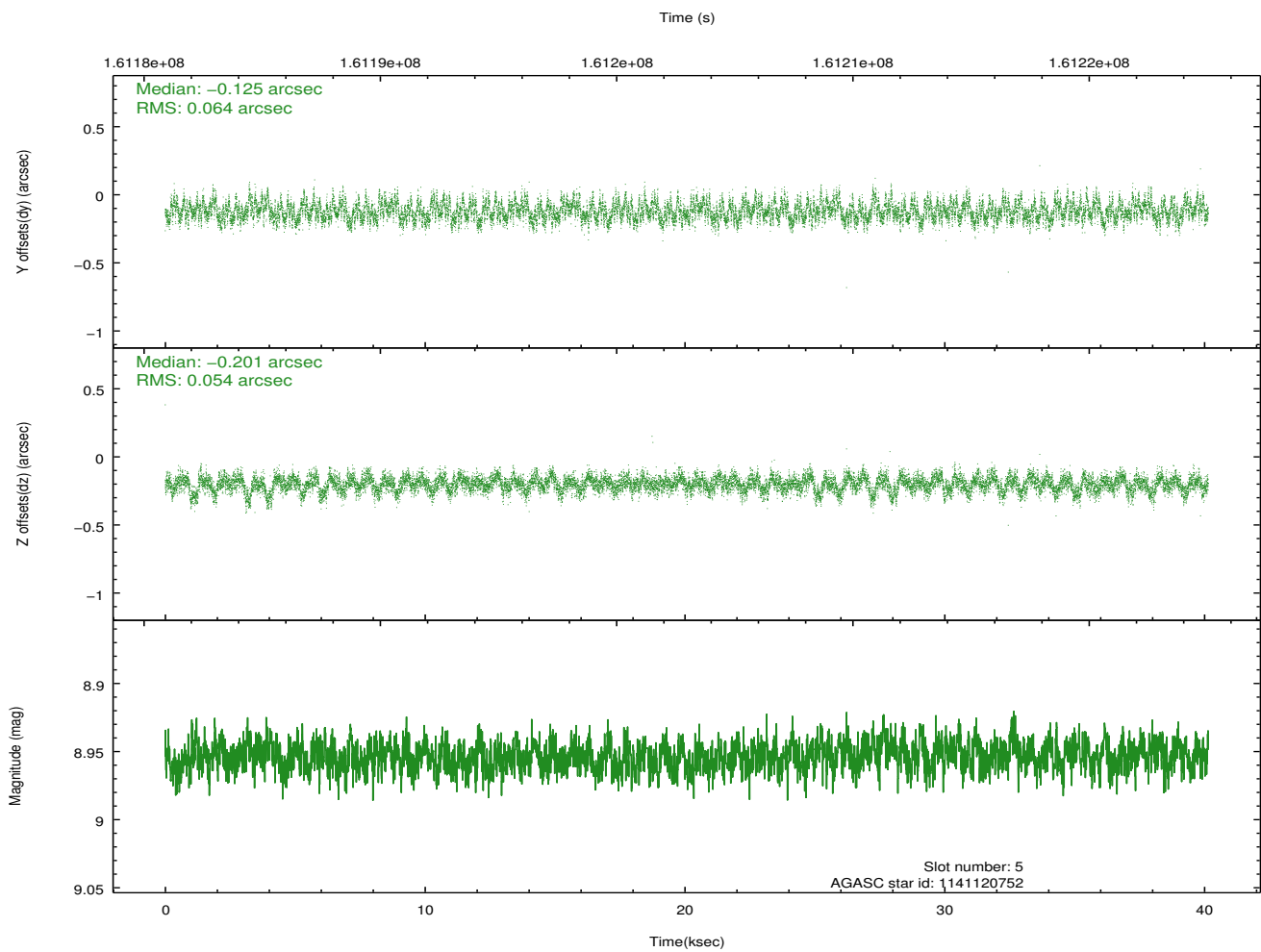
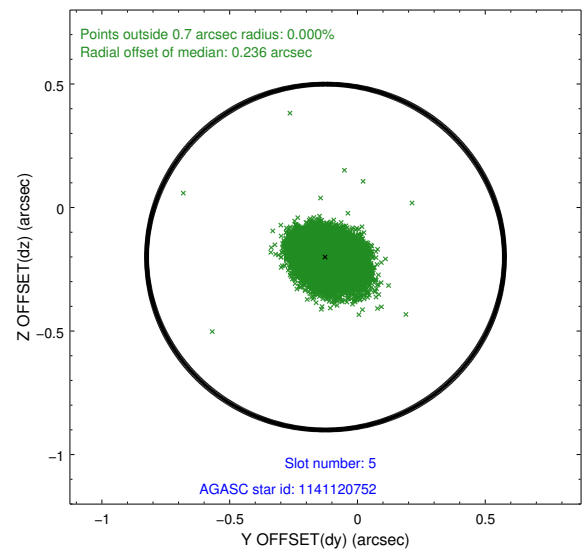
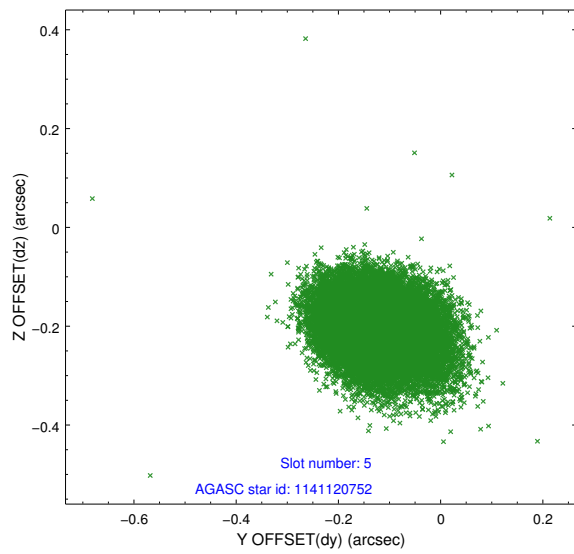
### 2.4.1 Slot 3



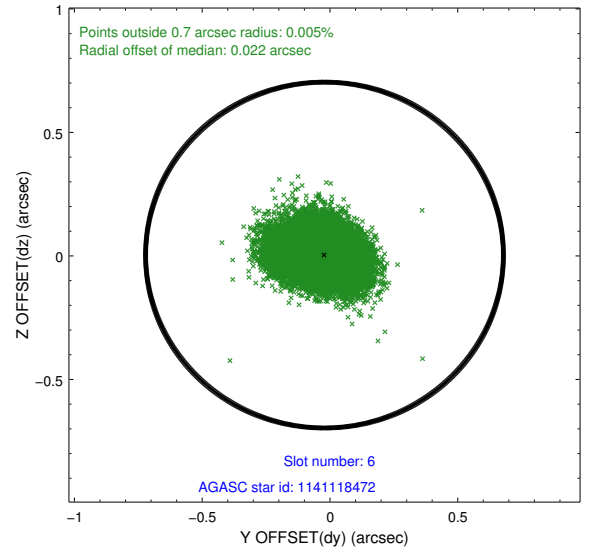
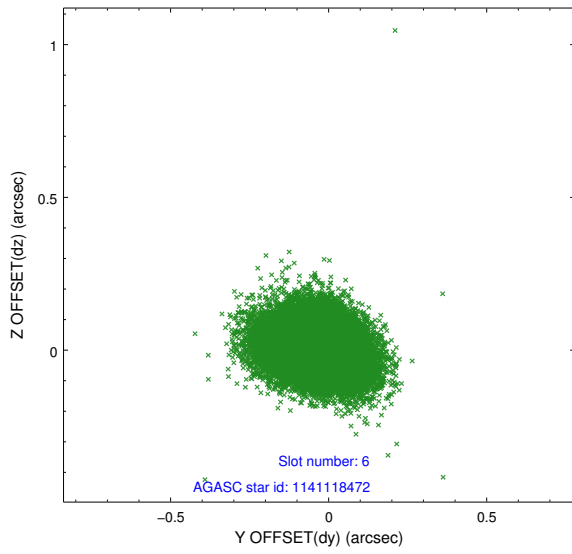
## 2.4.2 Slot 4



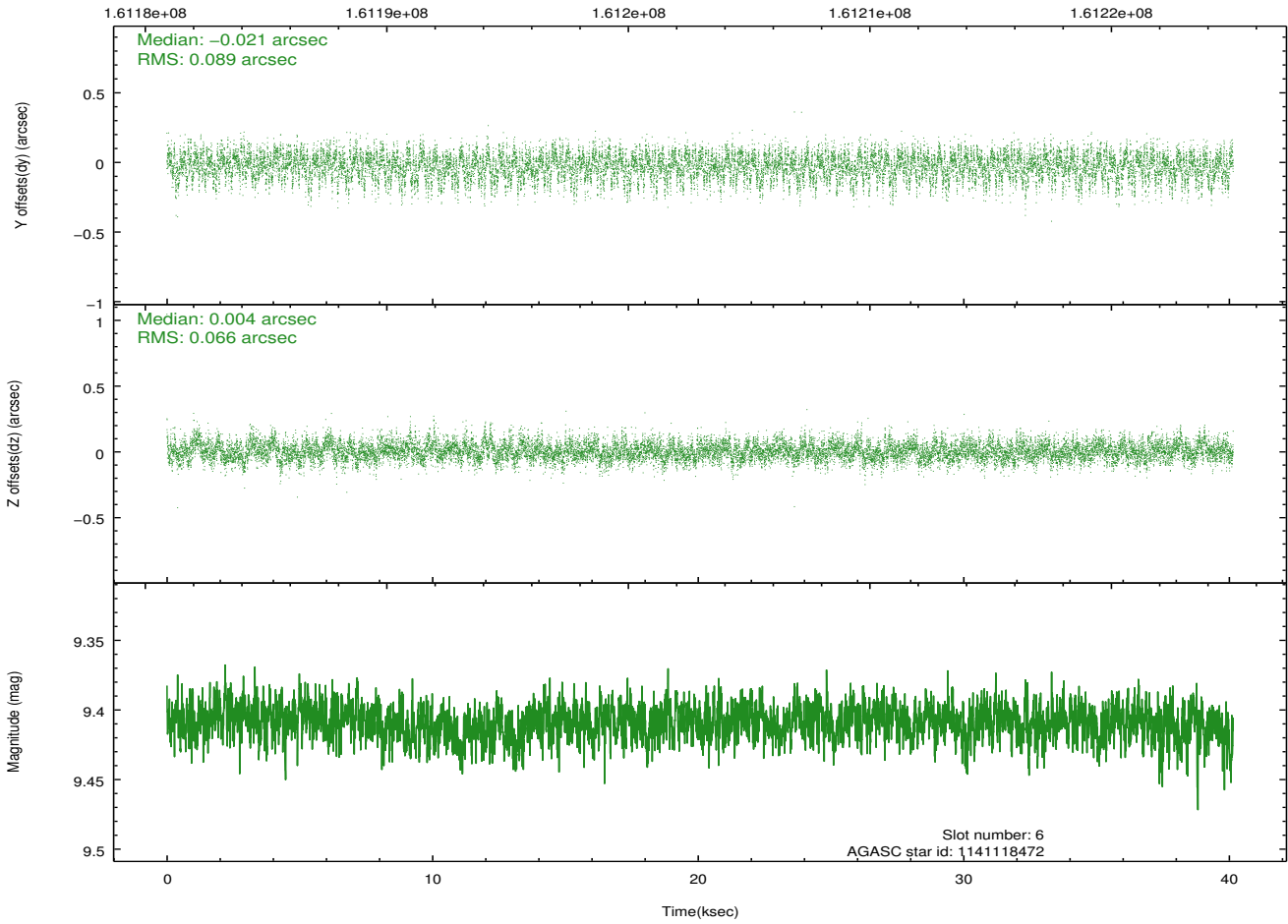
### 2.4.3 Slot 5



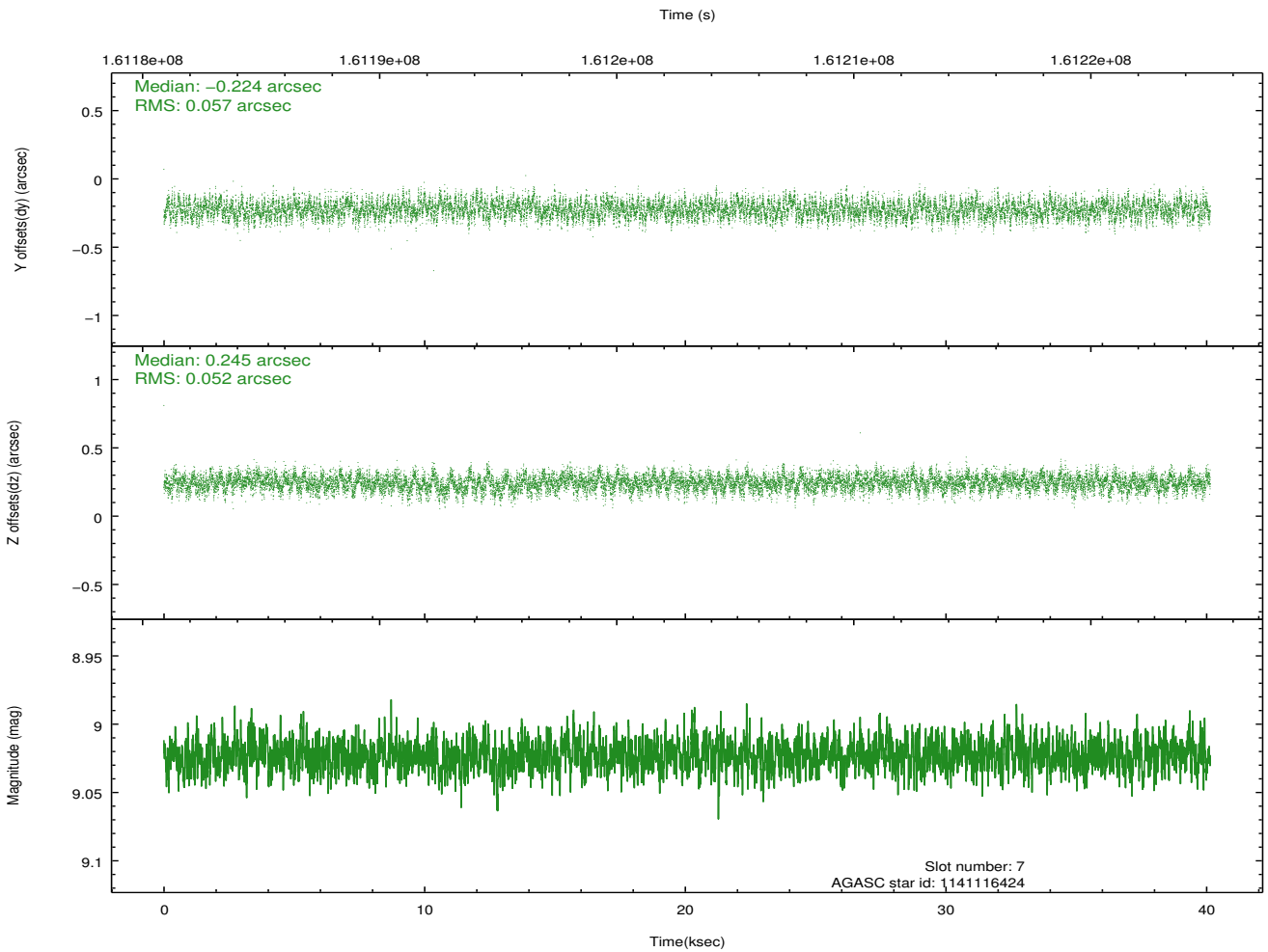
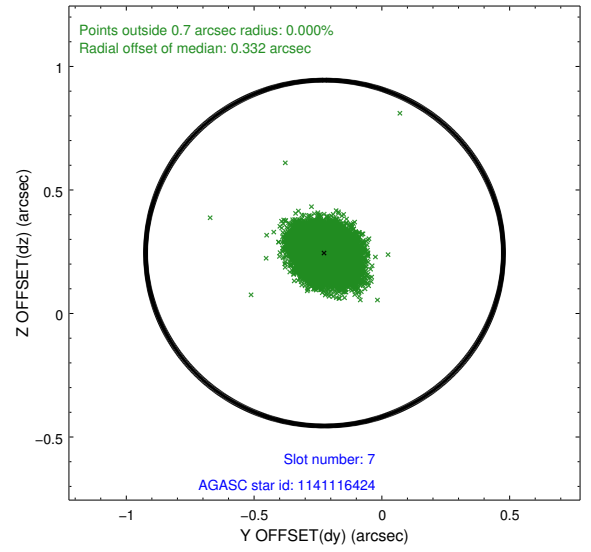
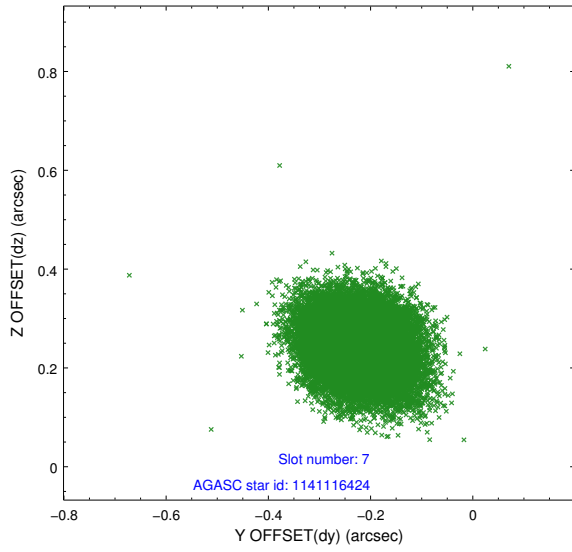
### 2.4.4 Slot 6



Time (s)

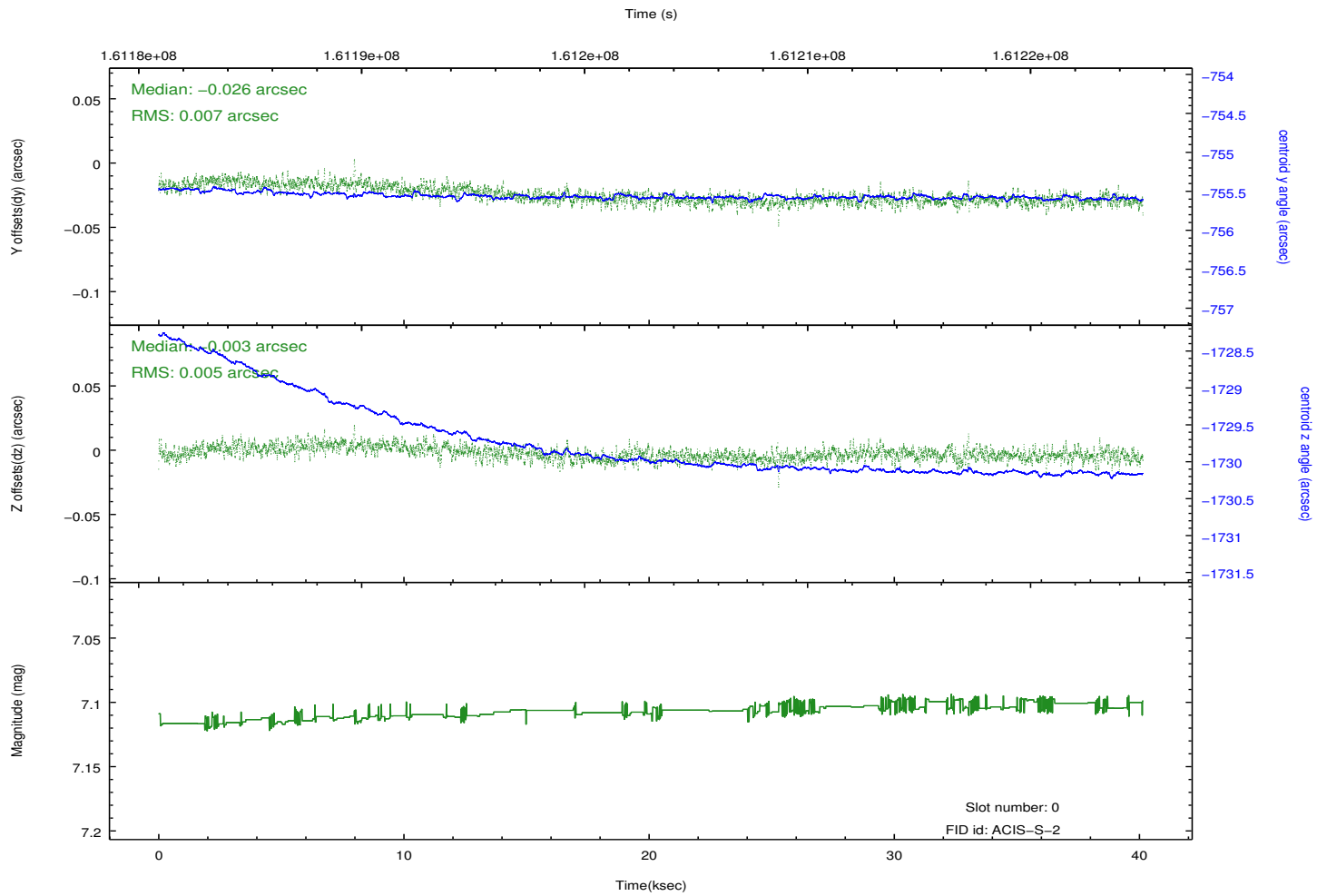
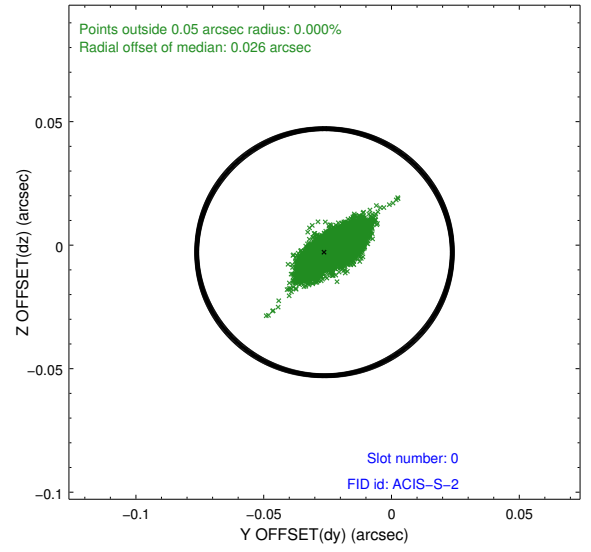
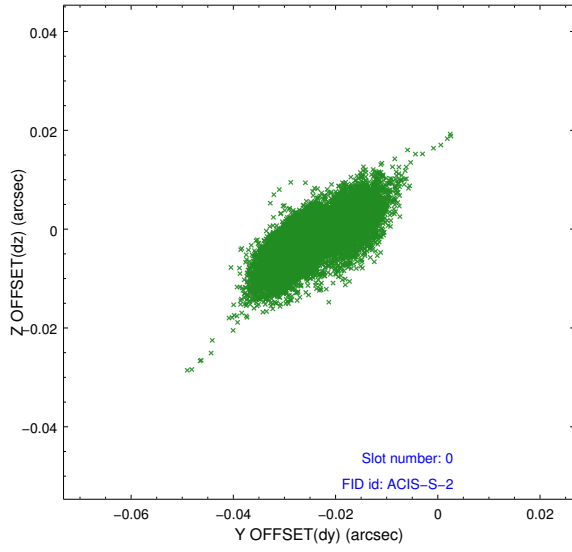


### 2.4.5 Slot 7

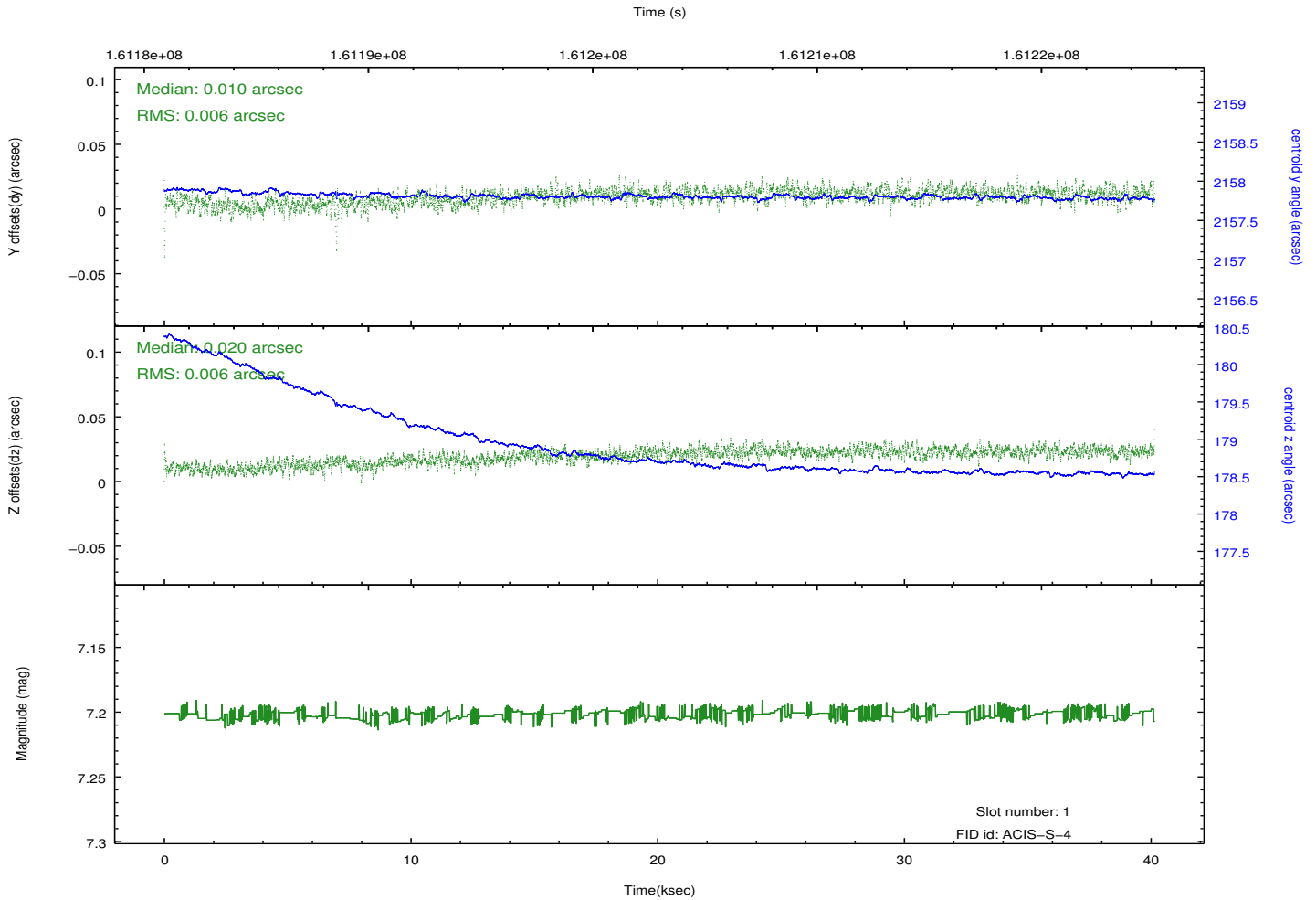
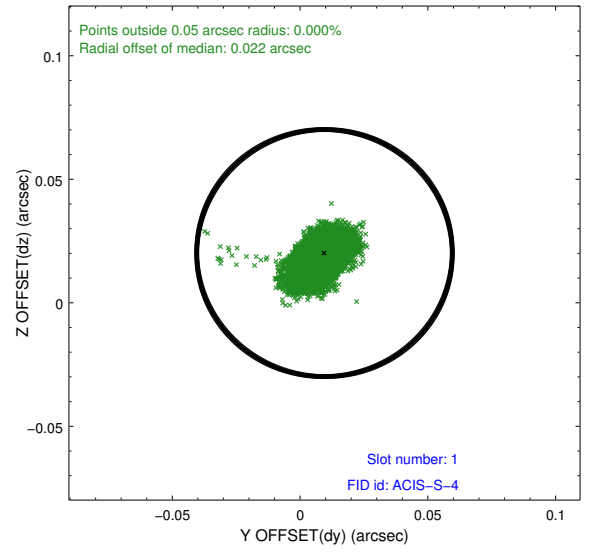
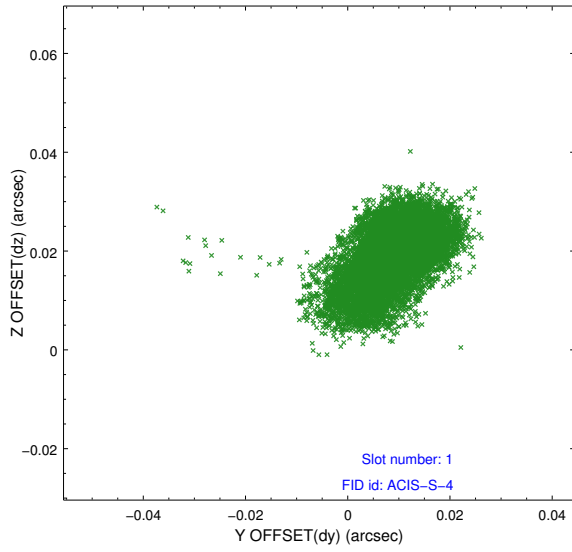


## 2.5 FID Slots

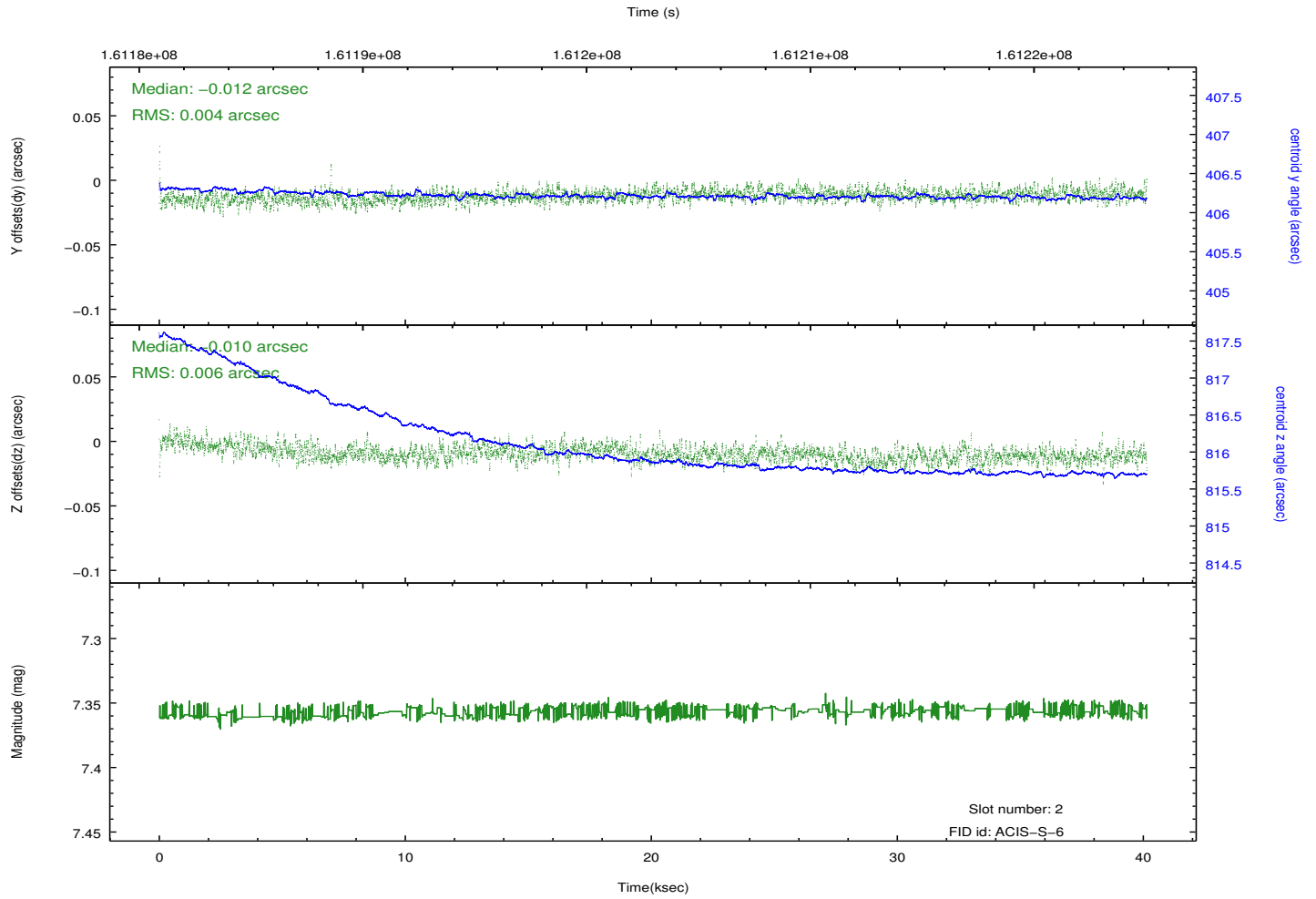
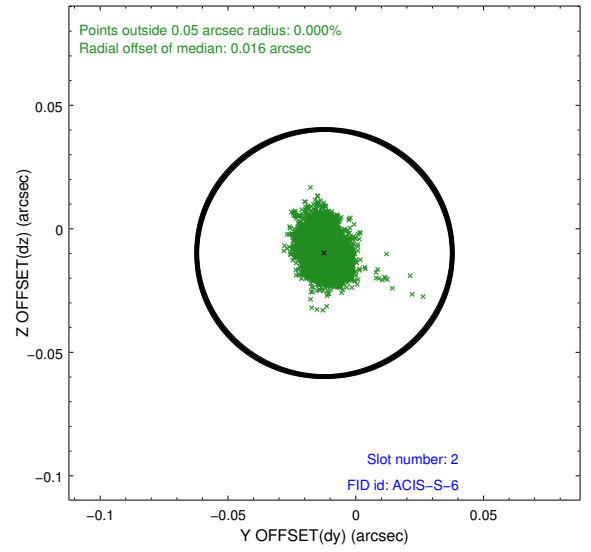
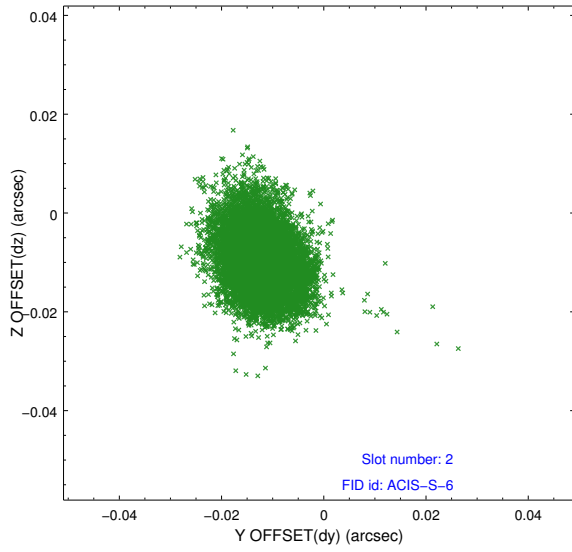
### 2.5.1 Slot 0



## 2.5.2 Slot 1



### 2.5.3 Slot 2



# A Summary

## A.1 Status

V&V Scientist	Jen Lauer
V&V Date (YYYY-MM-DD)	2012.11.05
V&V Edition	1
V&V Disposition and Status	OK
V&V Charge Time	40.141

## A.2 Comments