

V&V Reference Report

L2 ASCDS Version : 8.5.1

Observation 4533 - L2 Version 3
Chandra X-Ray Center

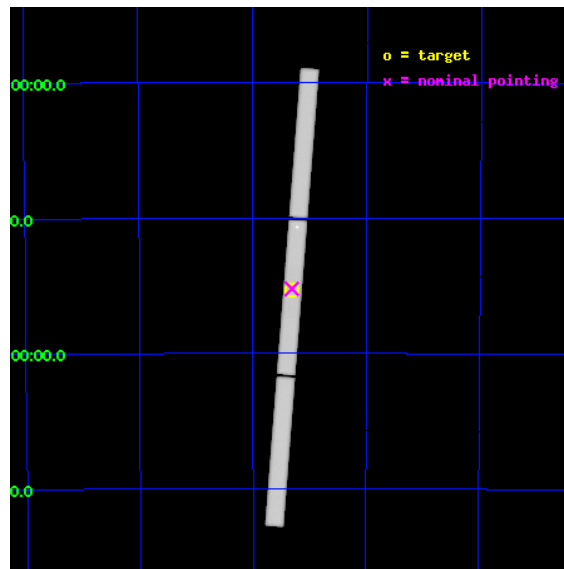
L2 Processing Date : Dec 17 2012

Contents

1	Front	2
2	OBI	3
2.1	OBI	3
2.1.1	Images	3
2.1.2	Parameters	4
2.1.3	Events	4
2.2	Compared Parameters	5
2.3	Aspect	6
2.4	Star Slots	9
2.4.1	Slot 3	9
2.4.2	Slot 4	10
2.4.3	Slot 5	11
2.4.4	Slot 6	12
2.4.5	Slot 7	13
2.5	FID Slots	14
2.5.1	Slot 0	14
2.5.2	Slot 1	15
2.5.3	Slot 2	16
3	Gratings	17
3.1	LETG Arm	17
A	Summary	19
A.1	Status	19
A.2	Comments	19

1 Front

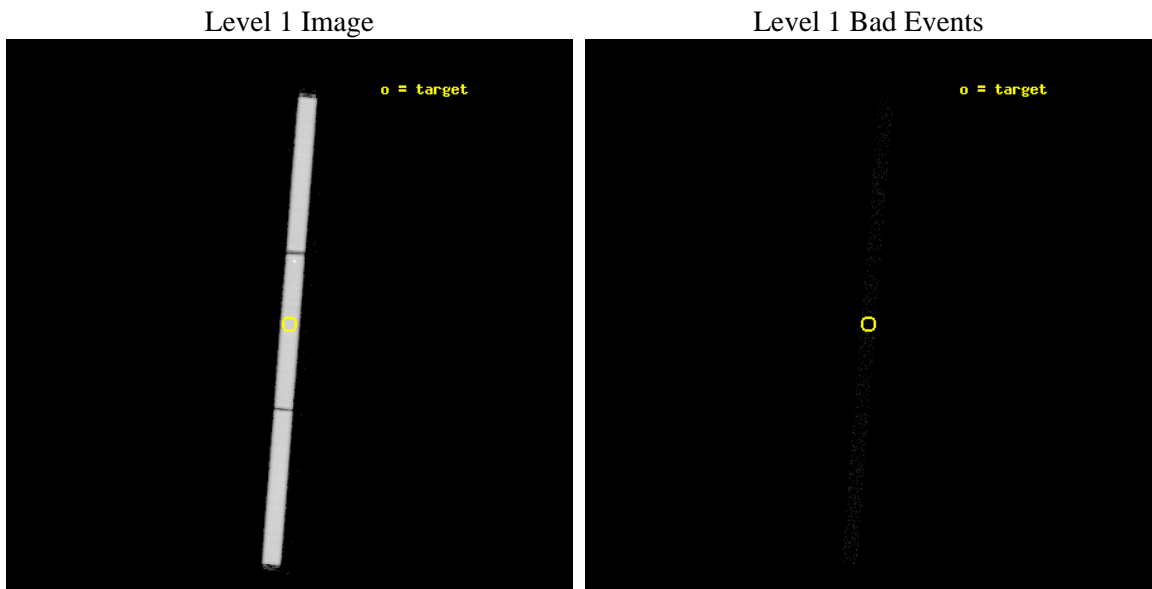
seq_num	300127	Sequence number
obs_id	4533	Observation id
title	Multiwavelength Target of Opportunity Observations of One Bright Nova in Outburst	Proposal title
observer	Regents' Professor Sumner Starrfield	Principal investigator
object	V1187 Sco	Source name
ra_targ	262.328333	Observer's specified target RA [deg]
dec_targ	-31.767083	Observer's specified target Dec [deg]
ra_nom	262.32804975406	Nominal RA [deg]
dec_nom	-31.762408964887	Nominal Dec [deg]
roll_nom	94.426899508471	Nominal Roll [deg]
revision	3	Processing version of data
ontime	26126.482431591	[s]
livetime	25886.297831839	Ontime multiplied by DTCOR
l2events	1813984	Number of level 2 events



2 OBI

2.1 OBI

2.1.1 Images



2.1.2 Parameters

obi_num	0	Obi number	sched_exp_time	26000.000000	[s] Scheduled observation exposure time
ascdsver	8.5.1	Processing system revision	ontime	26126.482431591	[s]
caldbver	4.5.5	 	l1events	2480075	Number of level 1 events
date	2012-12-17T02:28:13	Date and time of file creation			
revision	3	Processing version of data			

2.1.3 Events

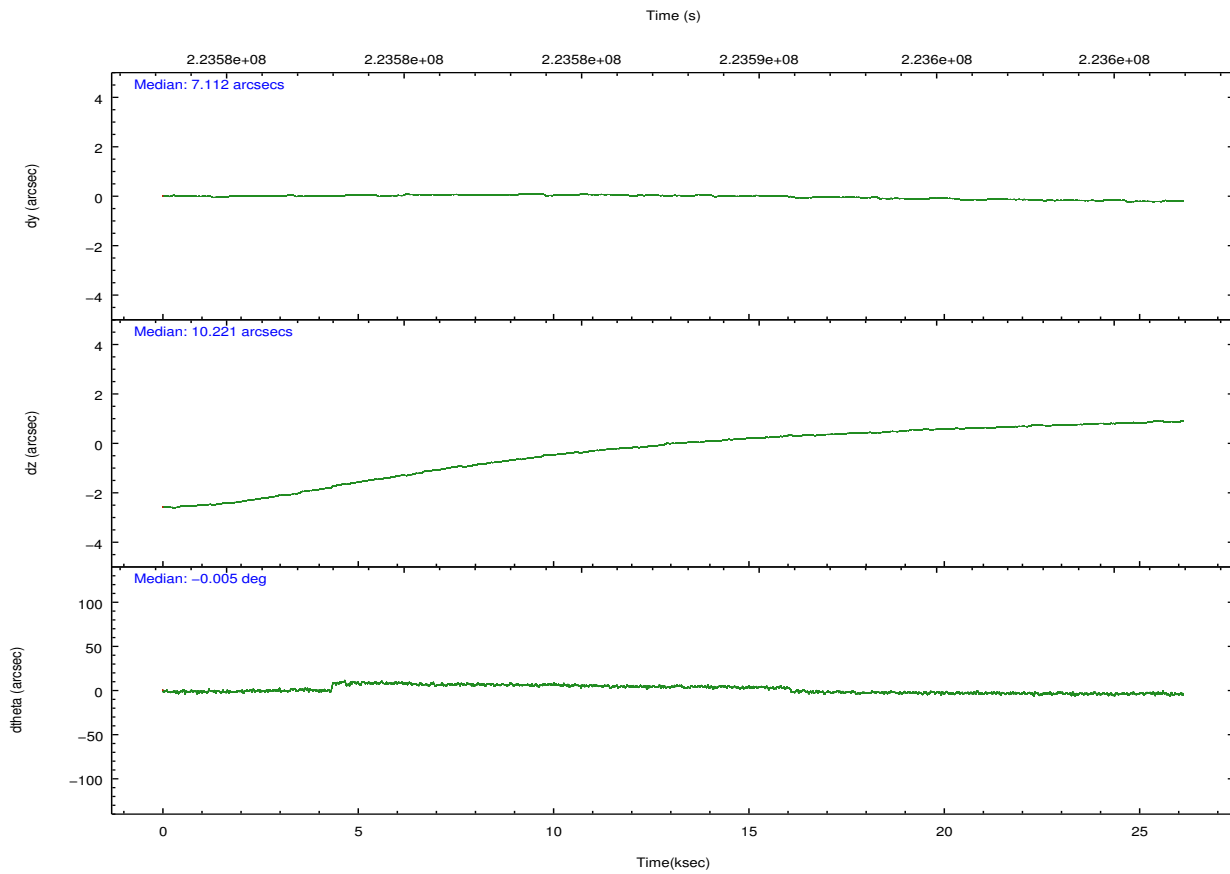
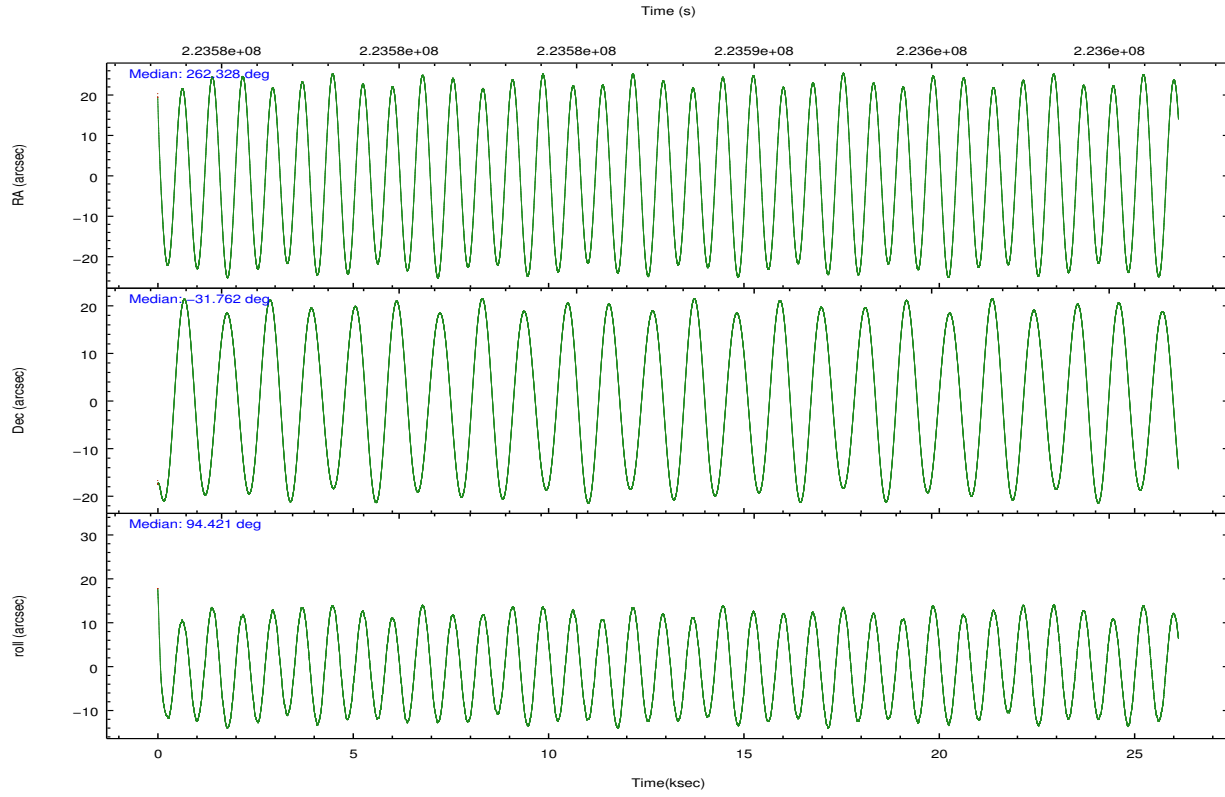
Level 1 Events

	segment 1	segment 2	segment 3
level 1 events	856708	803847	819520
rejected events	47899	42721	44028
rejected %	5%	5%	5%

2.2 Compared Parameters

Parameter	Planned	Actual	Parameter	Planned	Actual
Instrument	HRC	HRC	Obspar format version number	7	7
Detector	HRC-S	HRC-S	Obspar file type	PREDICTED	ACTUAL
Grating	LETG	LETG	Obspar update status	NONE	UPDATED
Data mode	OBSERVING	OBSERVING			
Observation mode	POINTING	POINTING			
[deg] Pointing RA	262.348432	262.328049754064			
[deg] Pointing Dec	-31.785166	-31.76240896488726			
[deg] Pointing Roll	94.370293	94.42689950847134			
[mm] SIM focus pos	-1.429586	-1.428180813131781			
[mm] SIM defocus	0.1037507710433287	0.1051558262725154			
[mm] SIM translation stage pos	250.455976	250.466033080201			
[mm] SIM translation stage offset	0	-0.01005468664627074			
[s] Observation start time (MET)	223574635.184000	223573335.644			
Observation start date	2005-01-31T16:02:51	2005-01-31T15:42:15			
[s] Observation end time (MET)	223600635.184000	223601538.00778			
Observation end date	2005-01-31T23:16:11	2005-01-31T23:32:18			

2.3 Aspect

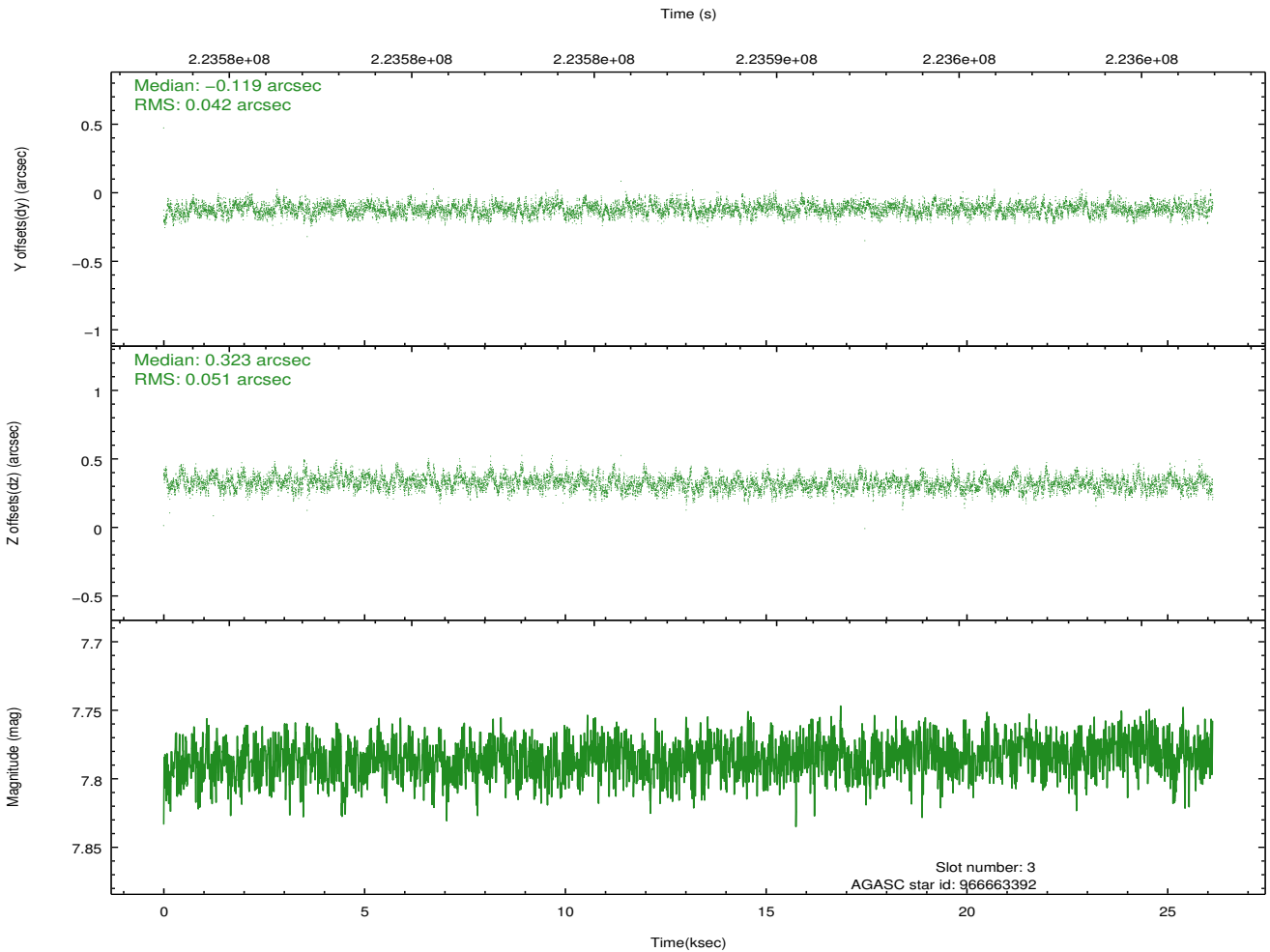
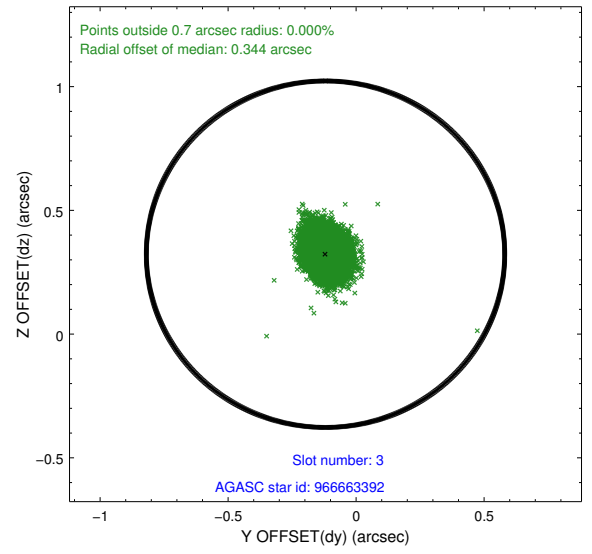
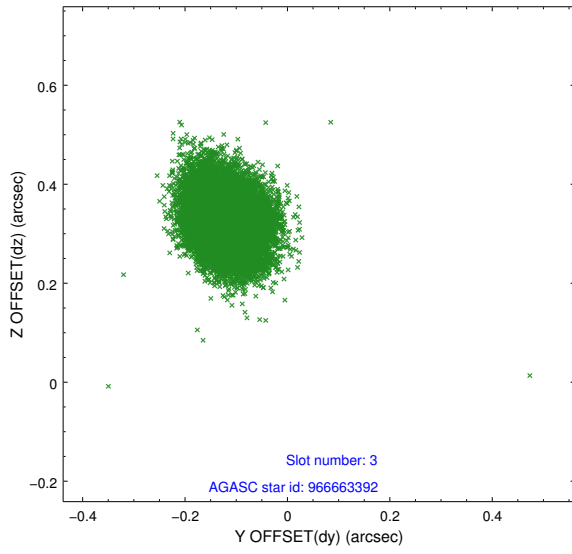


Slot Statistics

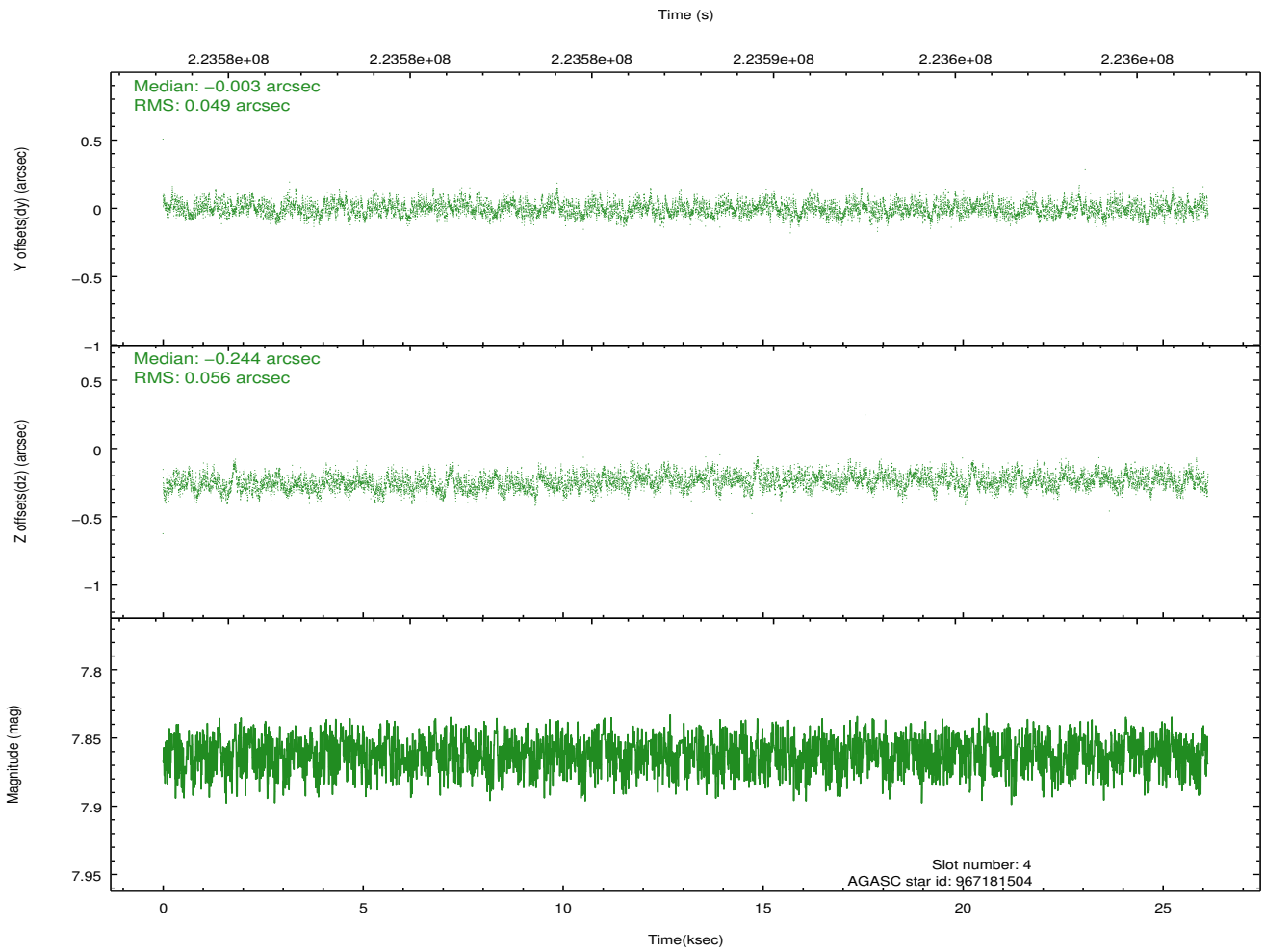
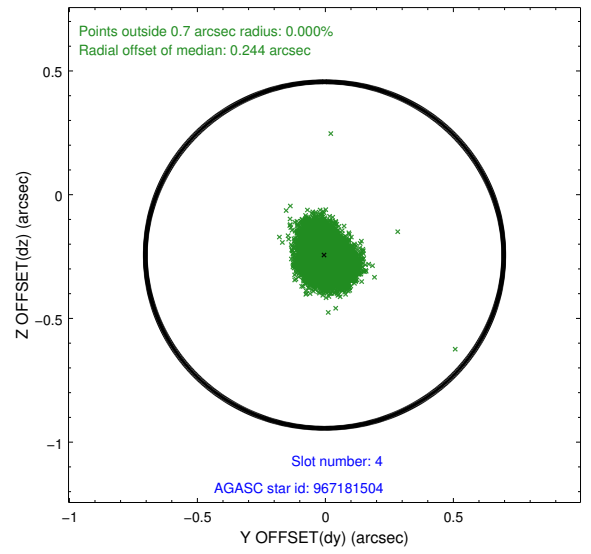
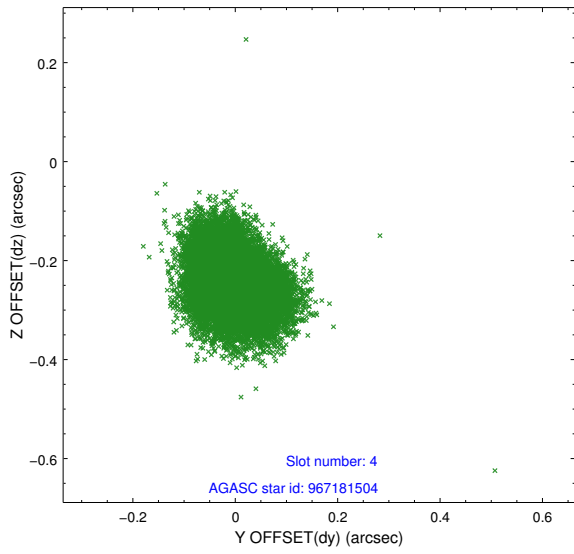
slot	status	id	mag	n_pts	med_dy	med_dz	dr1	dr2	ra	dec	mean_y	mean_z
0	FID	HRC-S-1	7.02	6371	0.083	-0.187	0.028	0.060	0.000000	0.000000	-1161.26	-458.57
1	FID	HRC-S-3	7.03	6373	0.098	-0.032	0.030	0.058	0.000000	0.000000	-1164.18	571.03
2	FID	HRC-S-4	6.98	6373	0.207	-0.080	0.010	0.017	0.000000	0.000000	1236.91	573.77
3	GUIDE	966663392	7.78	12746	-0.119	0.323	0.070	0.113	263.029690	-31.549104	681.97	-2147.68
4	GUIDE	967181504	7.86	12742	-0.003	-0.244	0.080	0.126	261.671808	-32.022142	-699.78	2124.30
5	GUIDE	967183712	9.02	12733	0.220	0.173	0.093	0.152	263.055109	-32.283332	-1958.65	-2007.01
6	GUIDE	966663720	7.84	12740	-0.081	-0.089	0.064	0.103	262.170068	-31.384212	1480.46	436.85
7	GUIDE	966659496	7.39	12743	-0.022	-0.165	0.076	0.116	262.303854	-31.534290	911.27	67.67

2.4 Star Slots

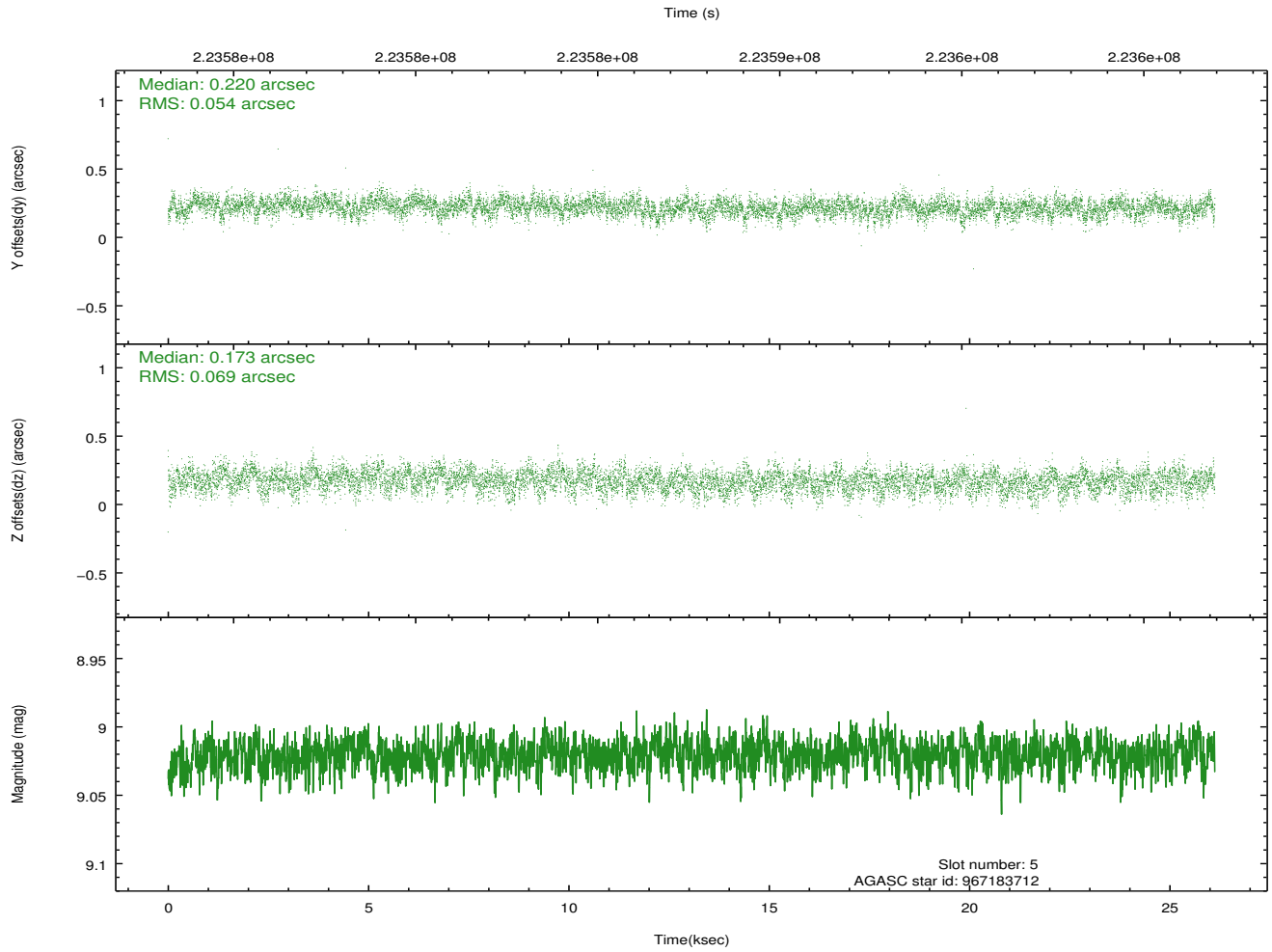
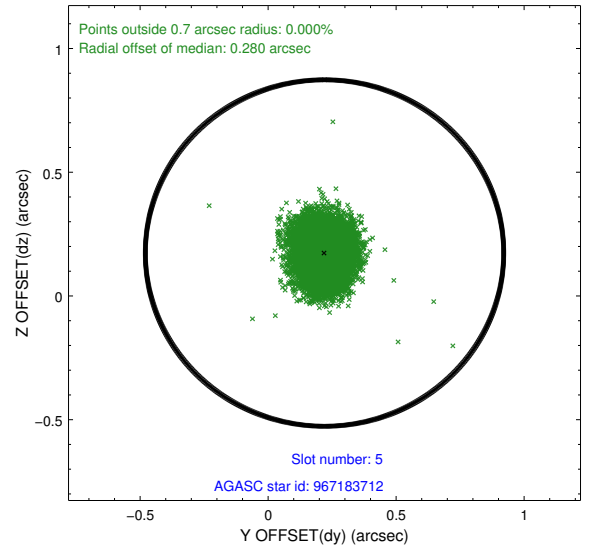
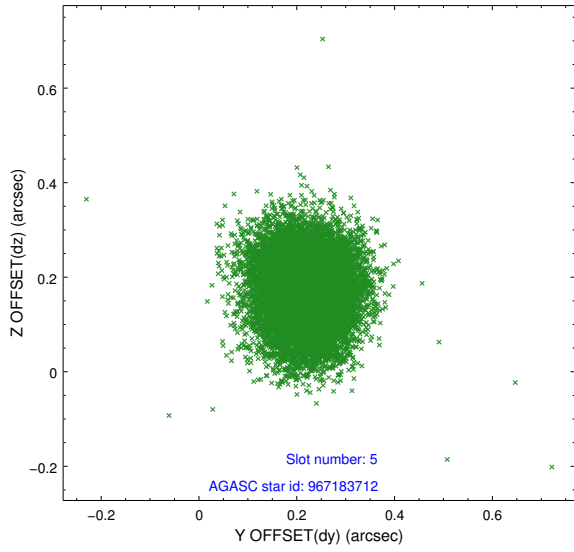
2.4.1 Slot 3



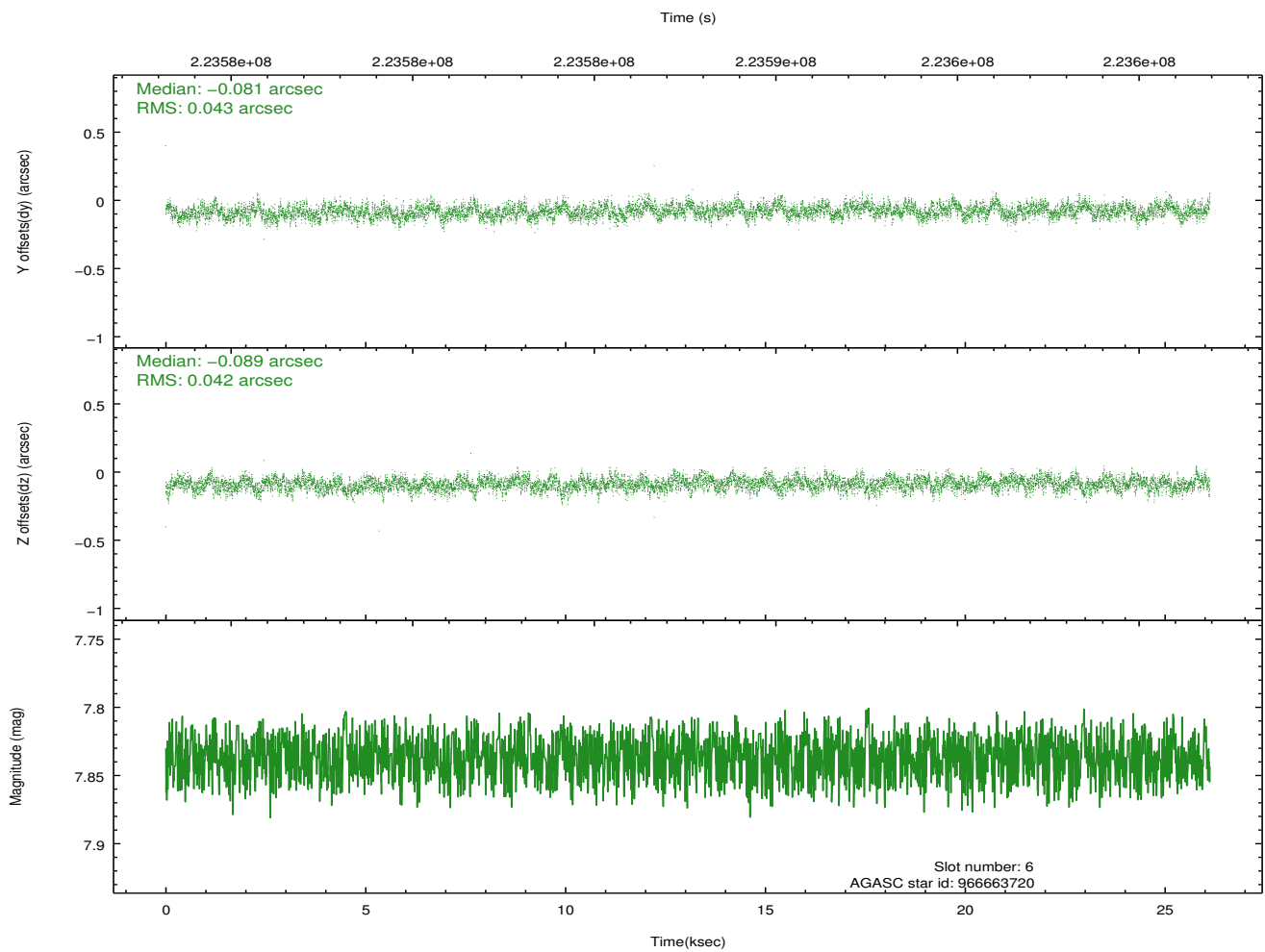
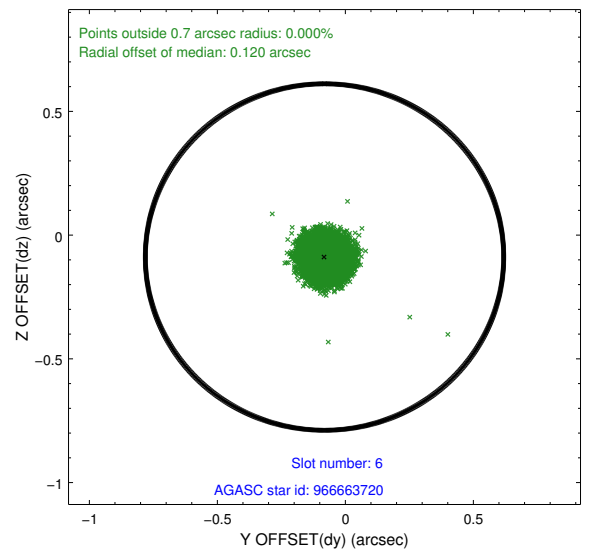
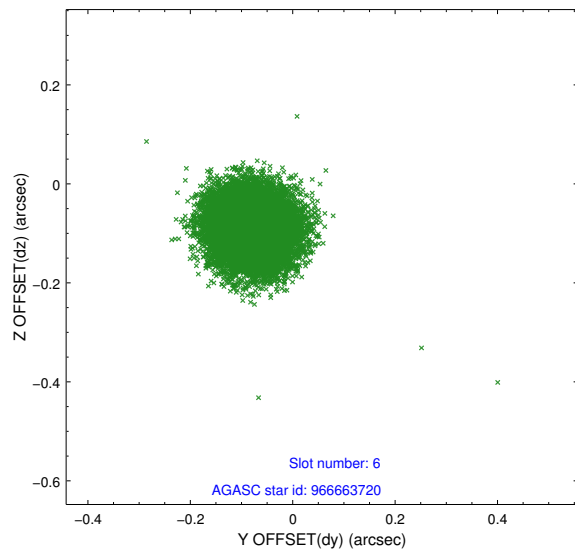
2.4.2 Slot 4



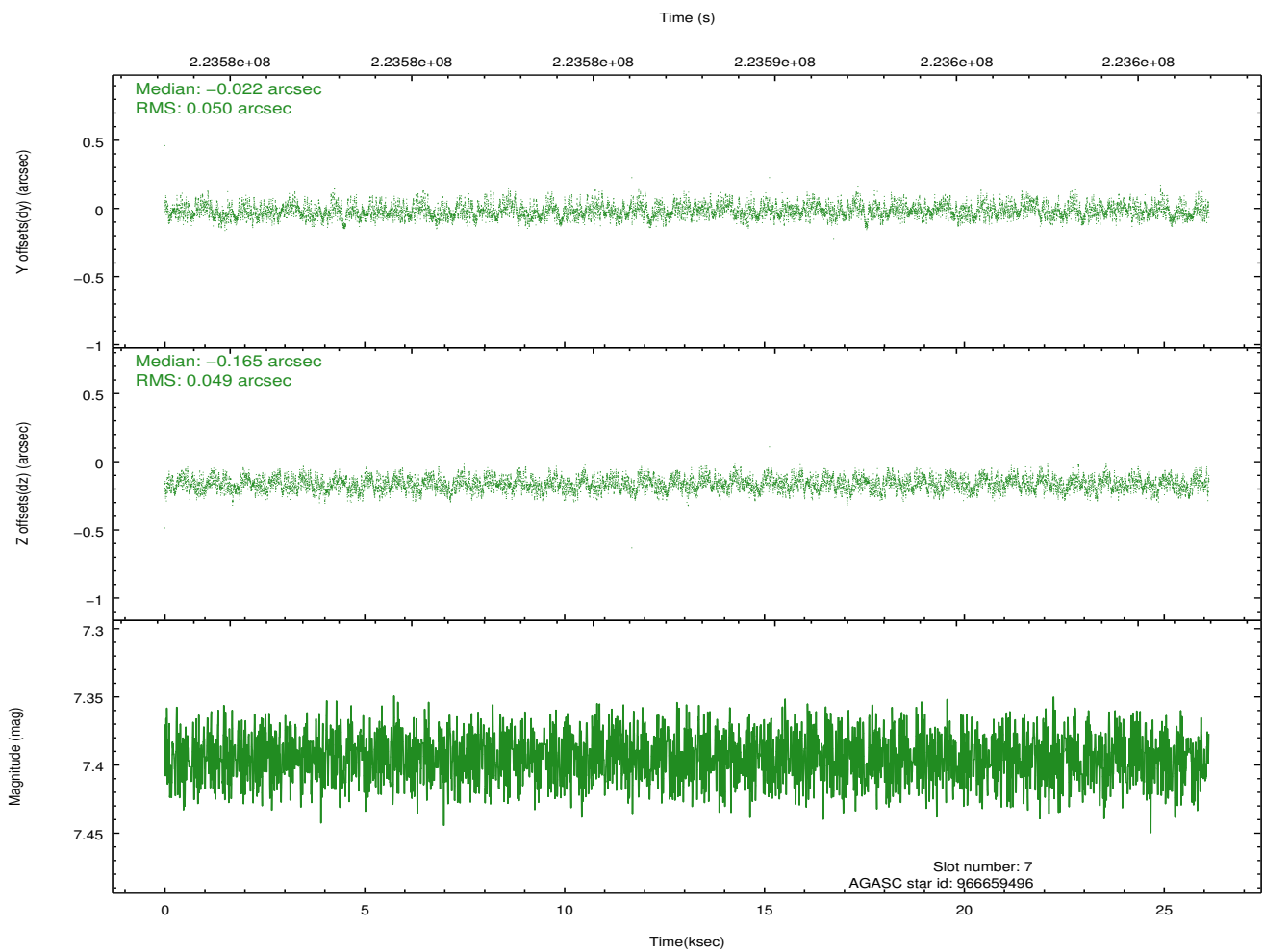
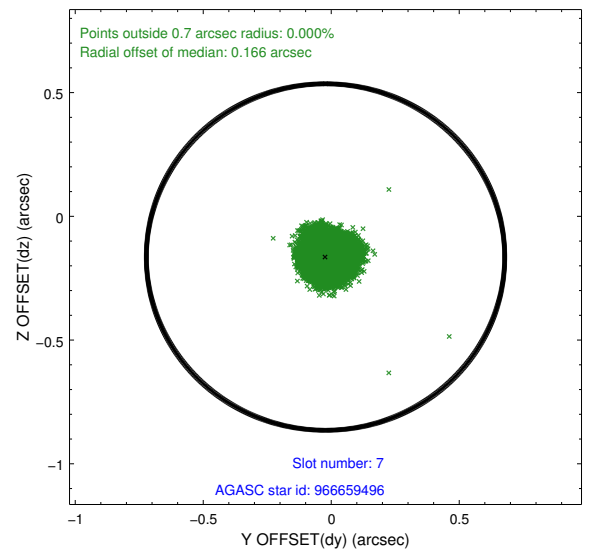
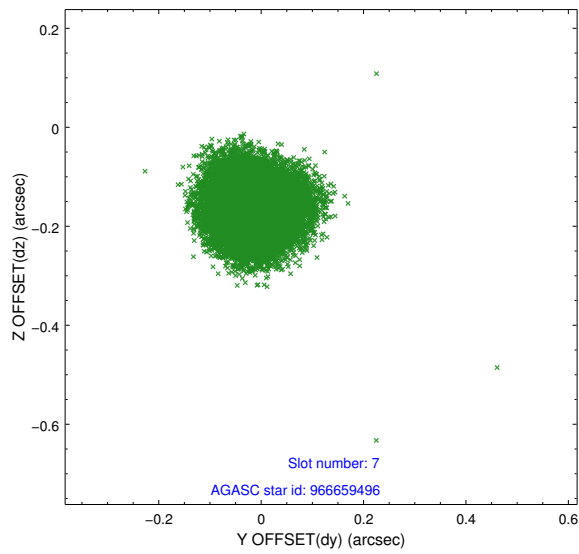
2.4.3 Slot 5



2.4.4 Slot 6

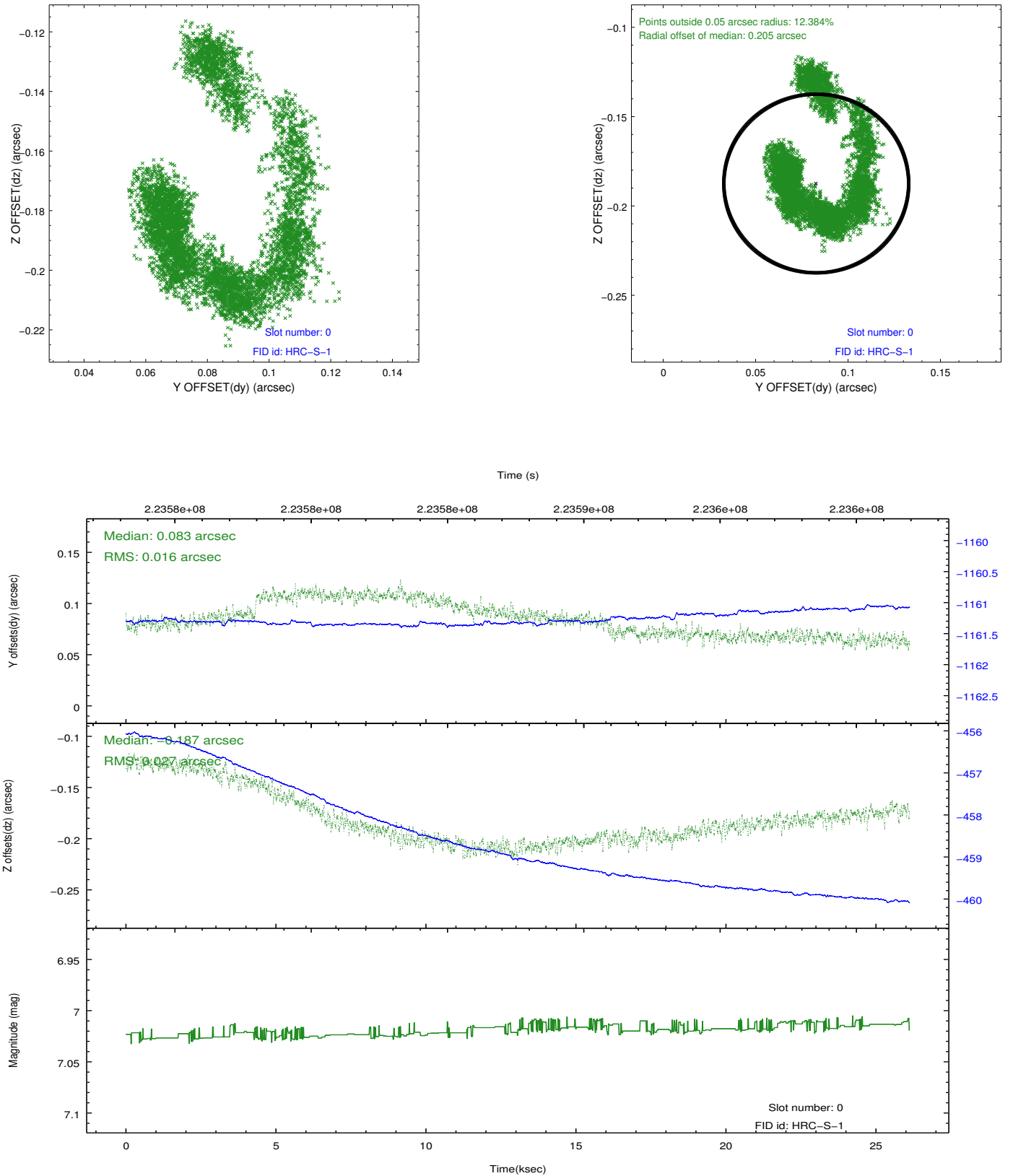


2.4.5 Slot 7

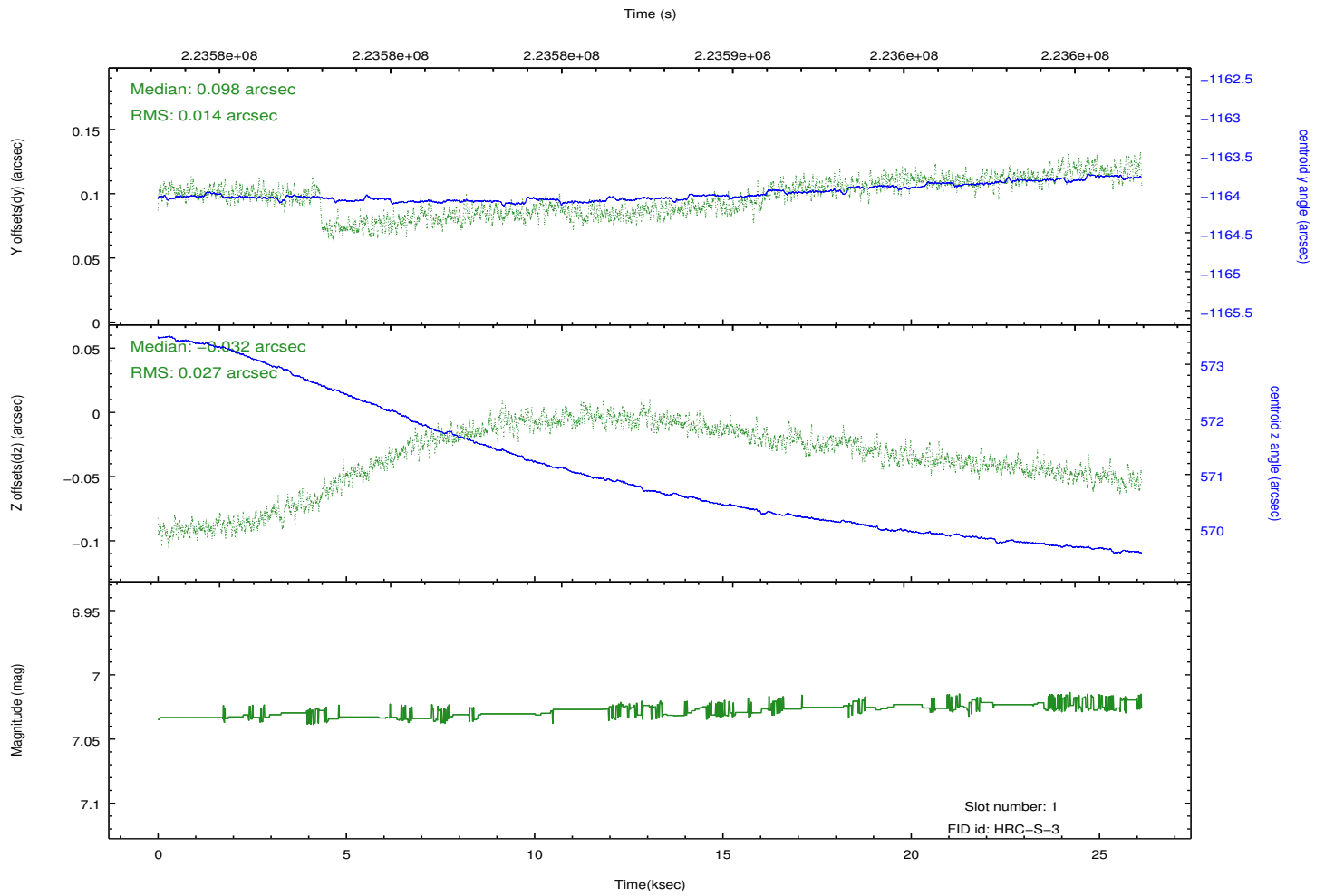
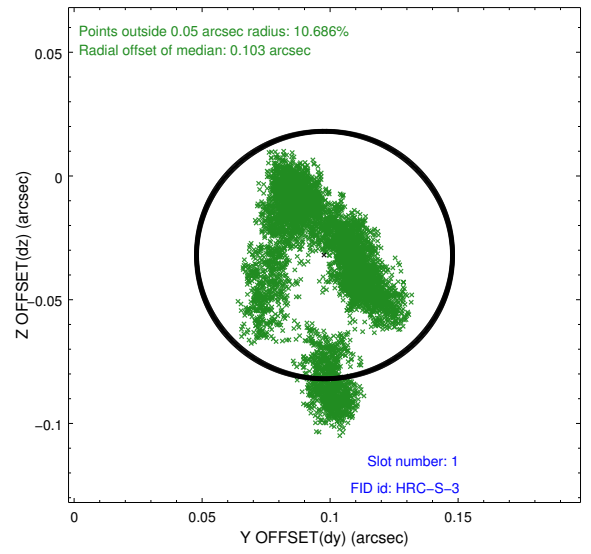
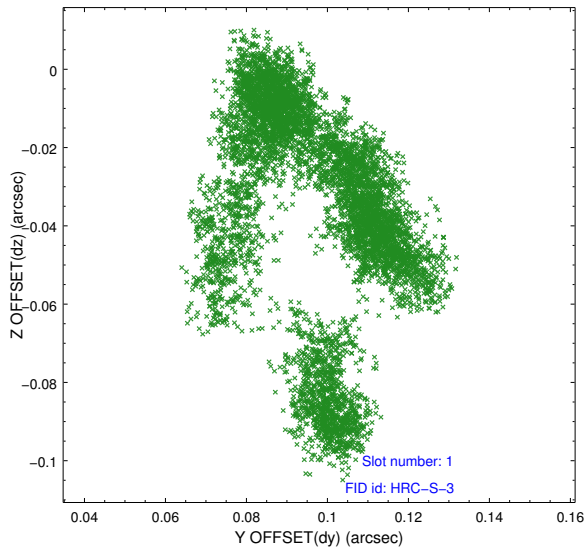


2.5 FID Slots

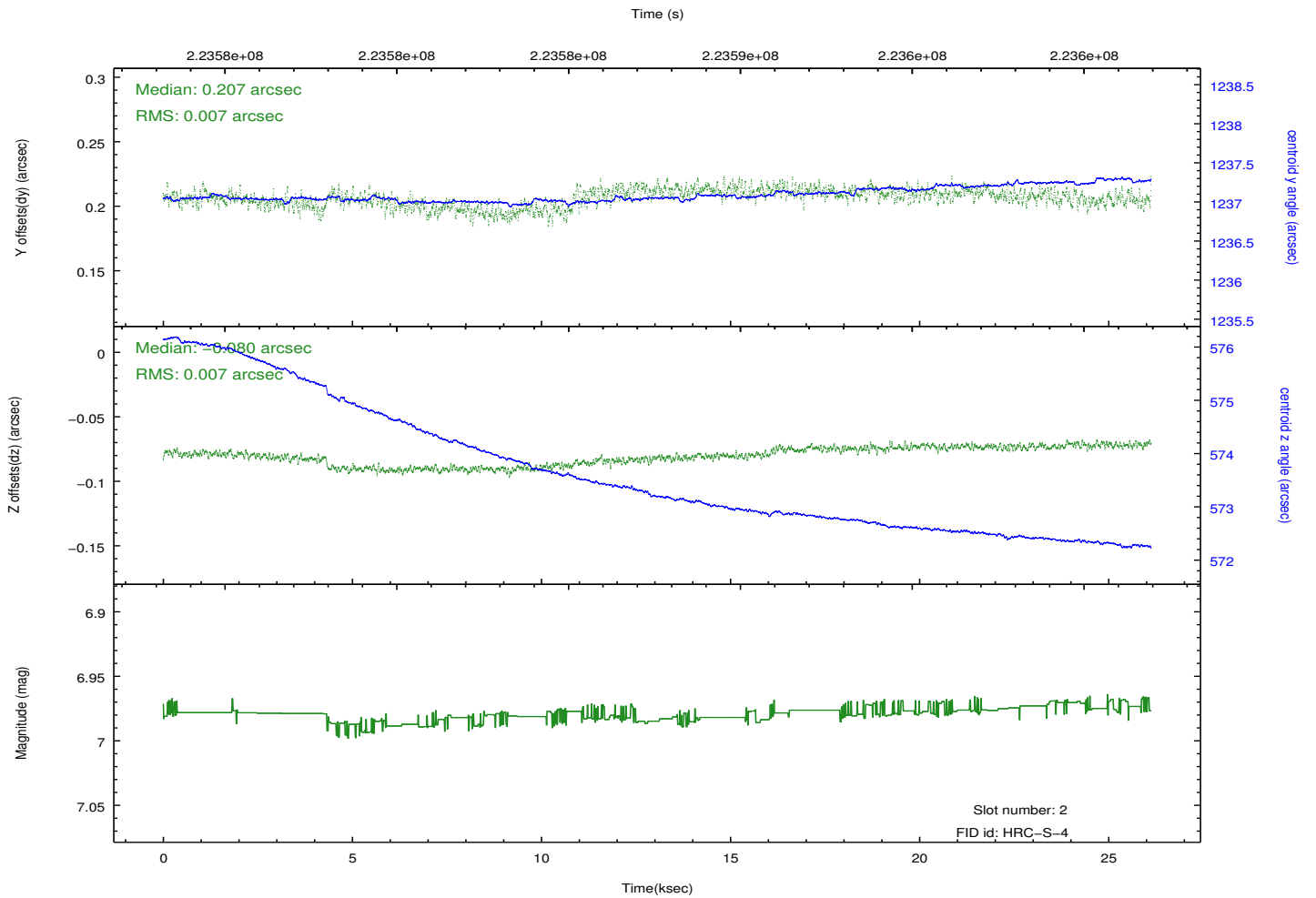
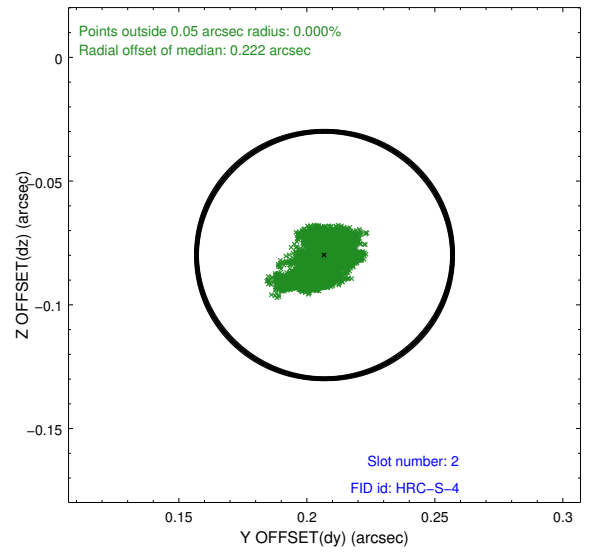
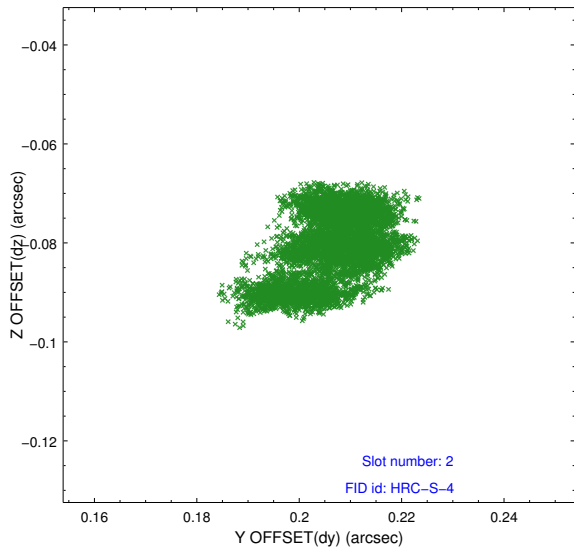
2.5.1 Slot 0



2.5.2 Slot 1

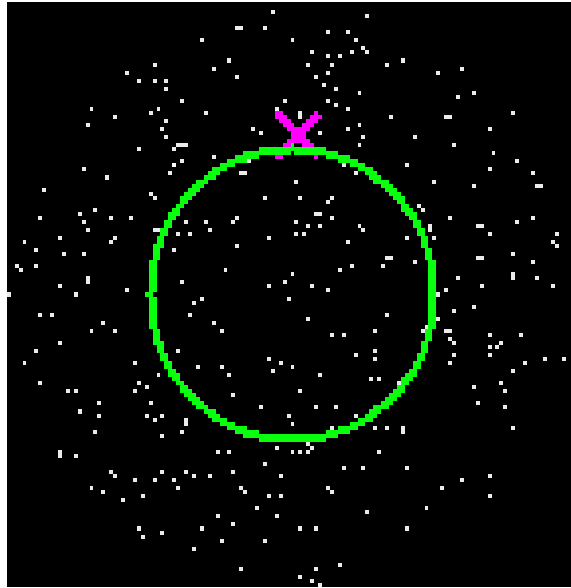


2.5.3 Slot 2

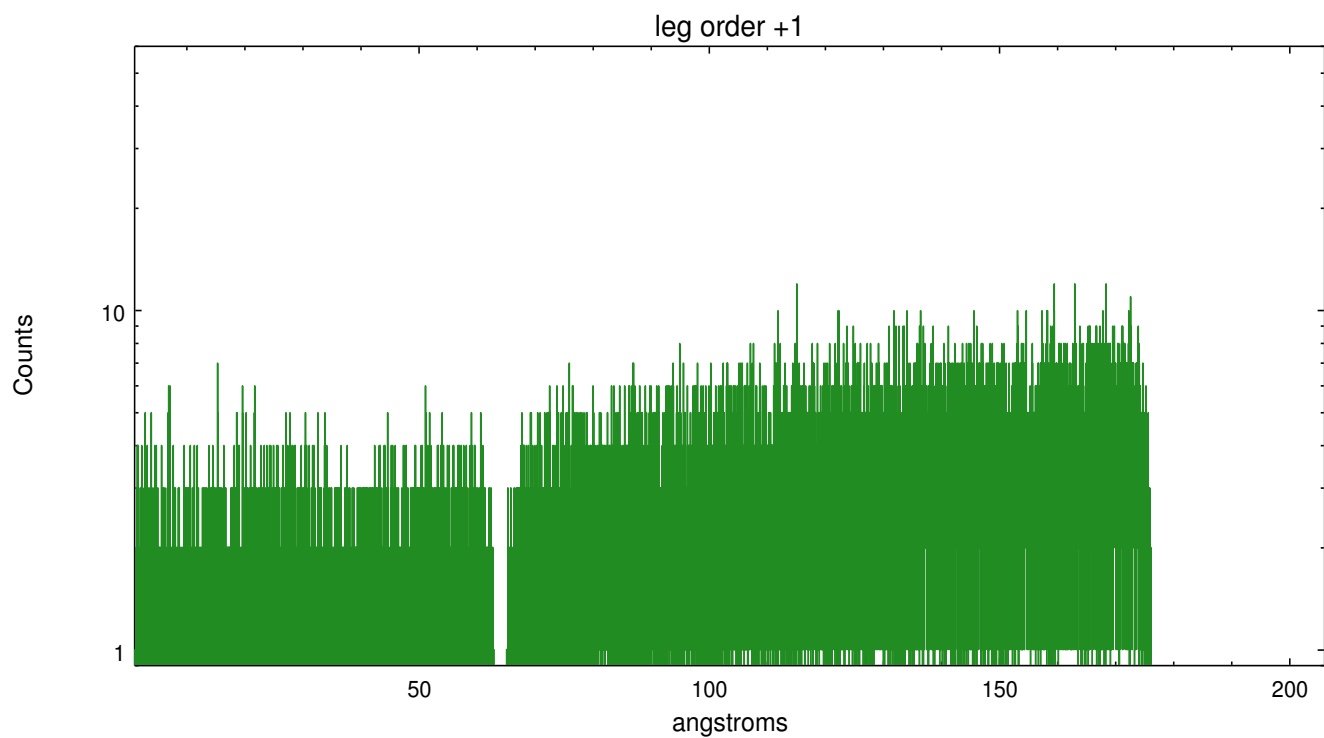
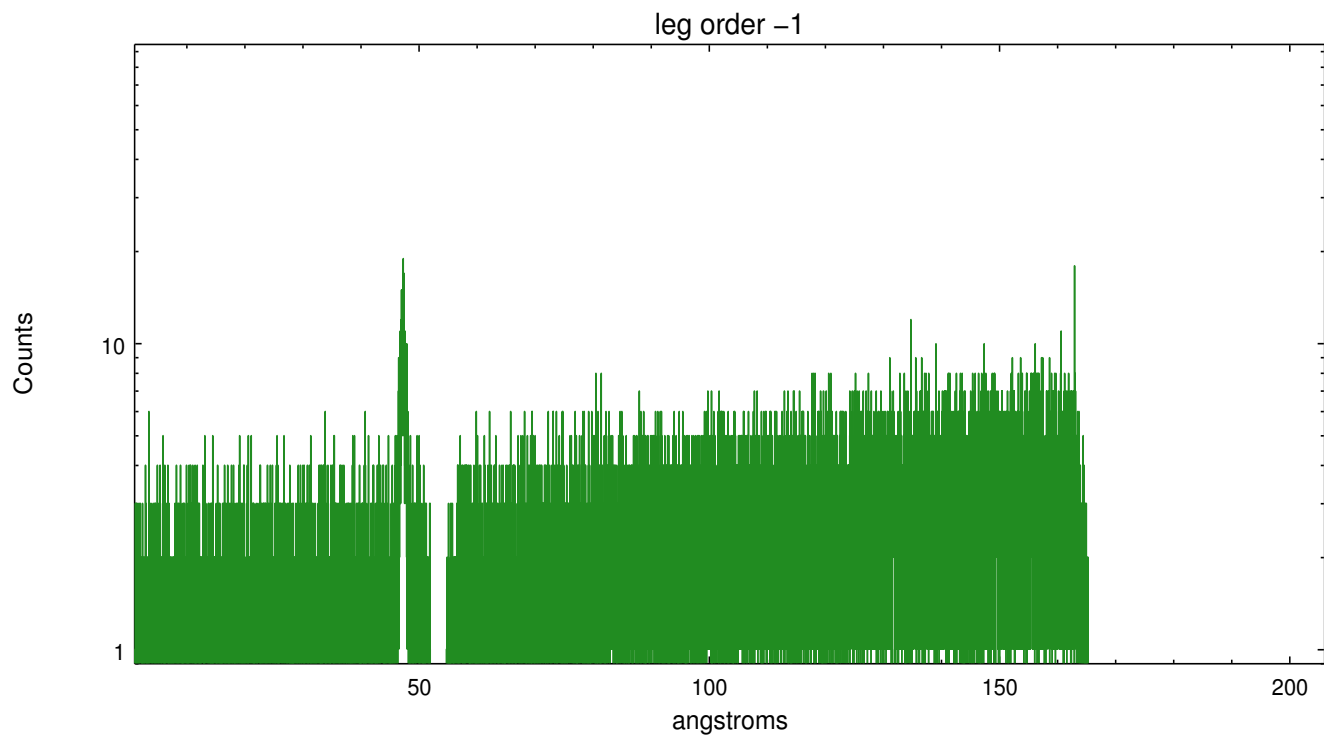


3 Gratings

3.1 LETG Arm



LETG Zero Order



A Summary

A.1 Status

V&V Scientist	Joy Nichols
V&V Date (YYYY-MM-DD)	2013.01.10
V&V Edition	1
V&V Disposition and Status	OK
V&V Charge Time	26.12648

A.2 Comments

No source at the position of the target. There is a very off-axis source at about ra=17:29:13, dec=31:32:05, which happens to lie on the projected dispersed spectral region. This off-axis source is easily seen in the leg -1 order spectrum at about 40-45 A.

===

No source was found for the zeroth order position, so the software defaulted to the user coordinates for the zeroth order position. There are no dispersed spectral events from the intended source.