

V&V Reference Report

L2 ASCDS Version : 8.5

Observation 4633 - L2 Version 3
Chandra X-Ray Center

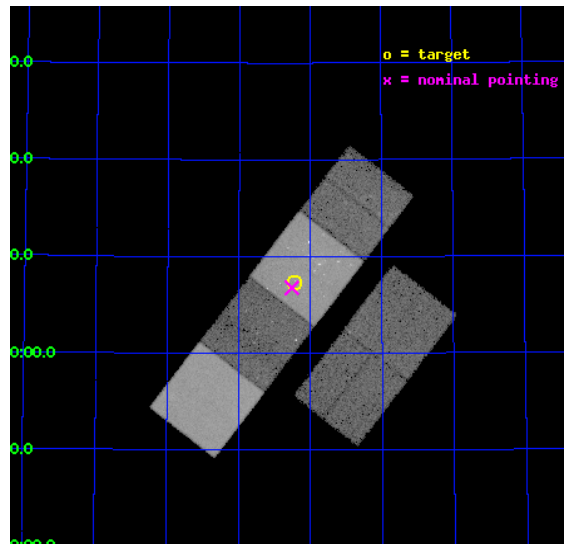
L2 Processing Date : Dec 12 2012

Contents

1	Front	2
2	OBI	3
2.1	OBI	3
2.1.1	Images	3
2.1.2	Bias	3
2.1.3	Parameters	4
2.1.4	Events	4
2.2	Compared Parameters	5
2.3	Aspect	6
2.4	Star Slots	9
2.4.1	Slot 3	9
2.4.2	Slot 4	10
2.4.3	Slot 5	11
2.4.4	Slot 6	12
2.4.5	Slot 7	13
2.5	FID Slots	14
2.5.1	Slot 0	14
2.5.2	Slot 1	15
2.5.3	Slot 2	16
A	Summary	17
A.1	Status	17
A.2	Comments	17

1 Front

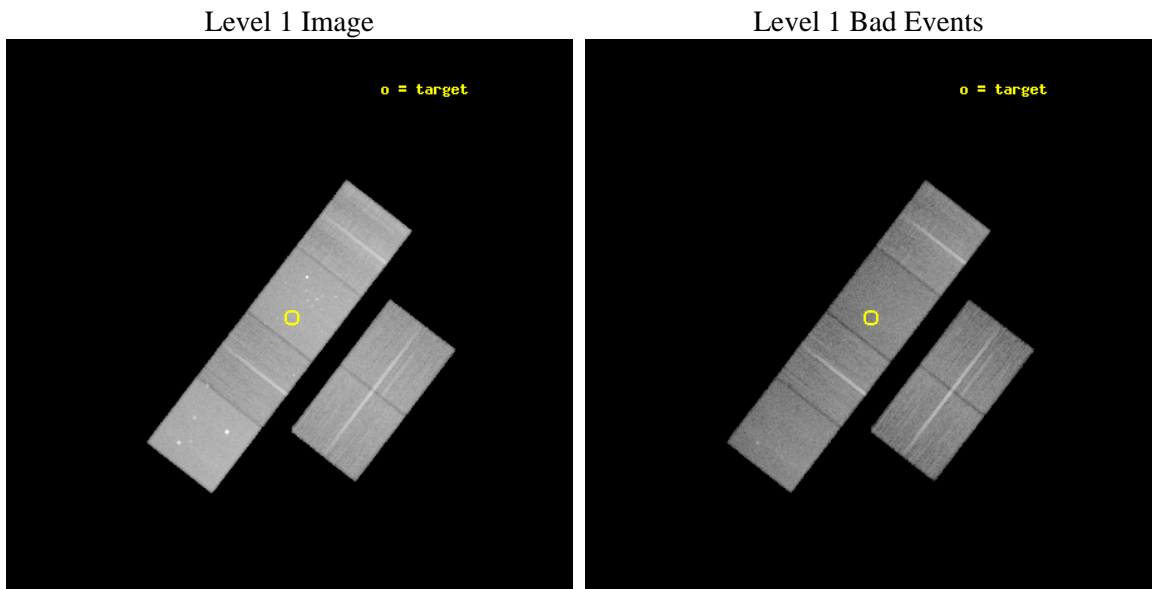
seq_num	500458	Sequence number
obs_id	4633	Observation id
title	Prompt Chandra Observations of Nearby Supernovae	Proposal title
observer	Prof. Walter Lewin	Principal investigator
object	SN 2004et	Source name
dtycycle	0	
cycle	P	events from which exps? Prim/Second/Both
ra_targ	308.805833	Observer's specified target RA [deg]
dec_targ	60.121556	Observer's specified target Dec [deg]
ra_nom	308.81480539297	Nominal RA [deg]
dec_nom	60.112983850007	Nominal Dec [deg]
roll_nom	307.58186261066	Nominal Roll [deg]
revision	3	Processing version of data
ontime	26955.583663553	Sum of GTIs [s]
livetime	26614.255832501	Livetime [s]
ontime2	26955.624703556	Sum of GTIs [s]
ontime3	26955.460543543	Sum of GTIs [s]
ontime5	26955.54262355	Sum of GTIs [s]
ontime6	26955.501583546	Sum of GTIs [s]
ontime7	26955.583663553	Sum of GTIs [s]
ontime8	26955.41950357	Sum of GTIs [s]
l2events	351818	Number of level 2 events



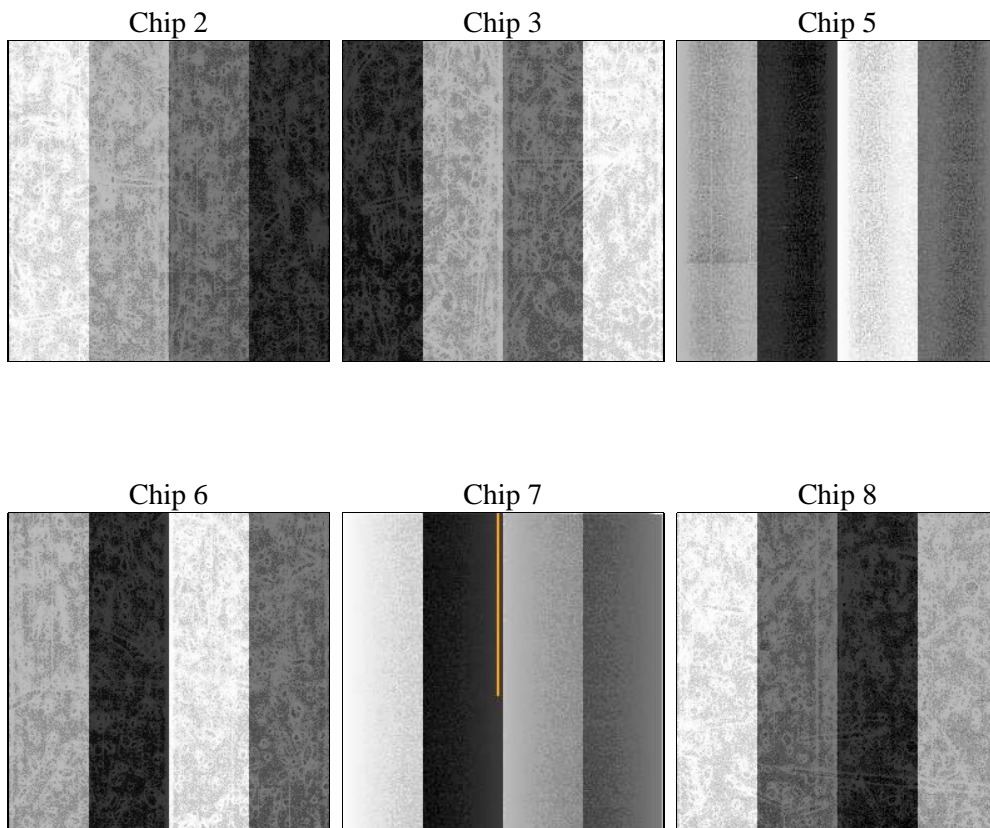
2 OBI

2.1 OBI

2.1.1 Images



2.1.2 Bias



2.1.3 Parameters

obi_num	0	Obi number	sched_exp_time	27000.000000	[s] Scheduled observation exposure time
ascdsver	8.5	Processing system revision	ontime	26955.583663553	Sum of GTIs [s]
caldbver	4.5.4	 	ontime2	26955.624703556	Sum of GTIs [s]
date	2012-12-12T11:59:17	Date and time of file creation	ontime3	26955.460543543	Sum of GTIs [s]
revision	3	Processing version of data	ontime5	26955.54262355	Sum of GTIs [s]
			ontime6	26955.501583546	Sum of GTIs [s]
			ontime7	26955.583663553	Sum of GTIs [s]
			ontime8	26955.41950357	Sum of GTIs [s]
			l1events	1544954	Number of level 1 events

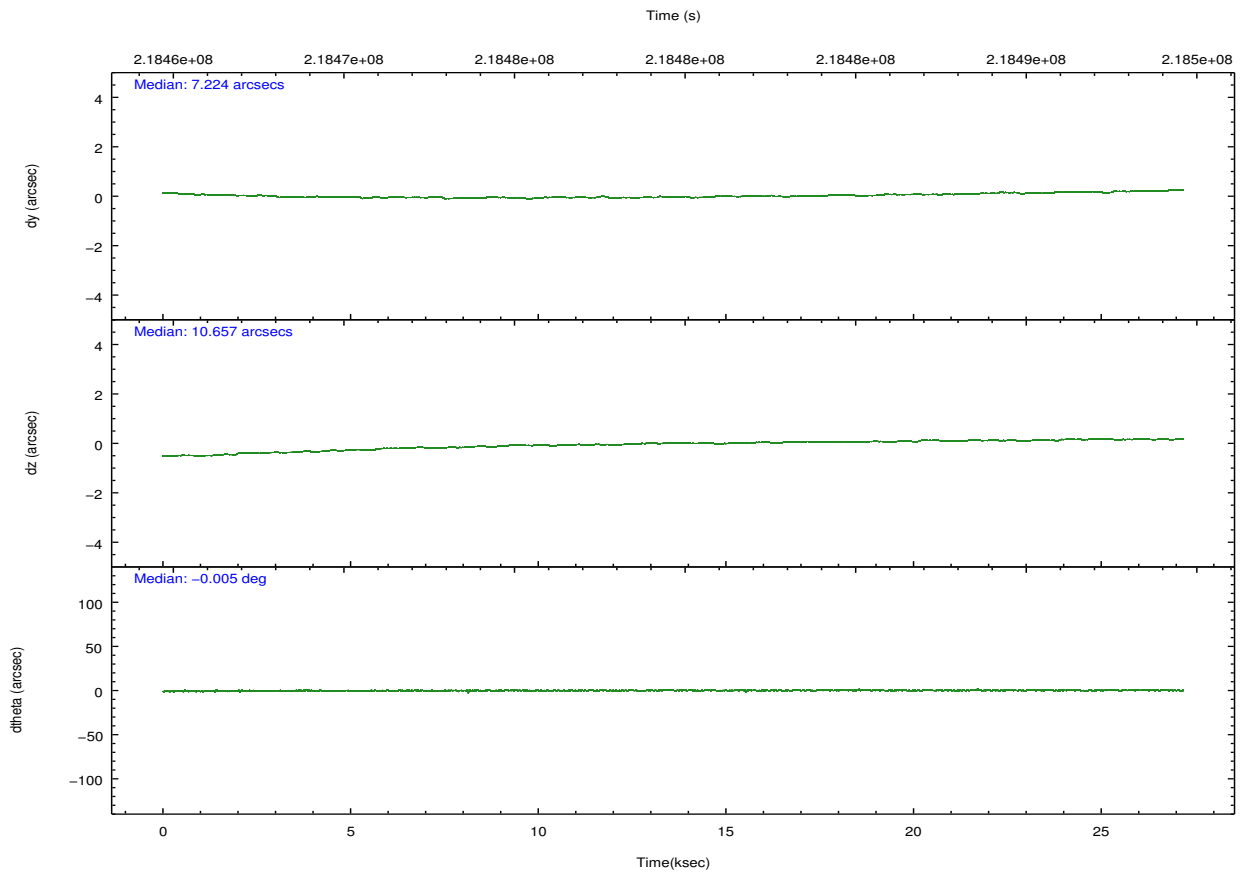
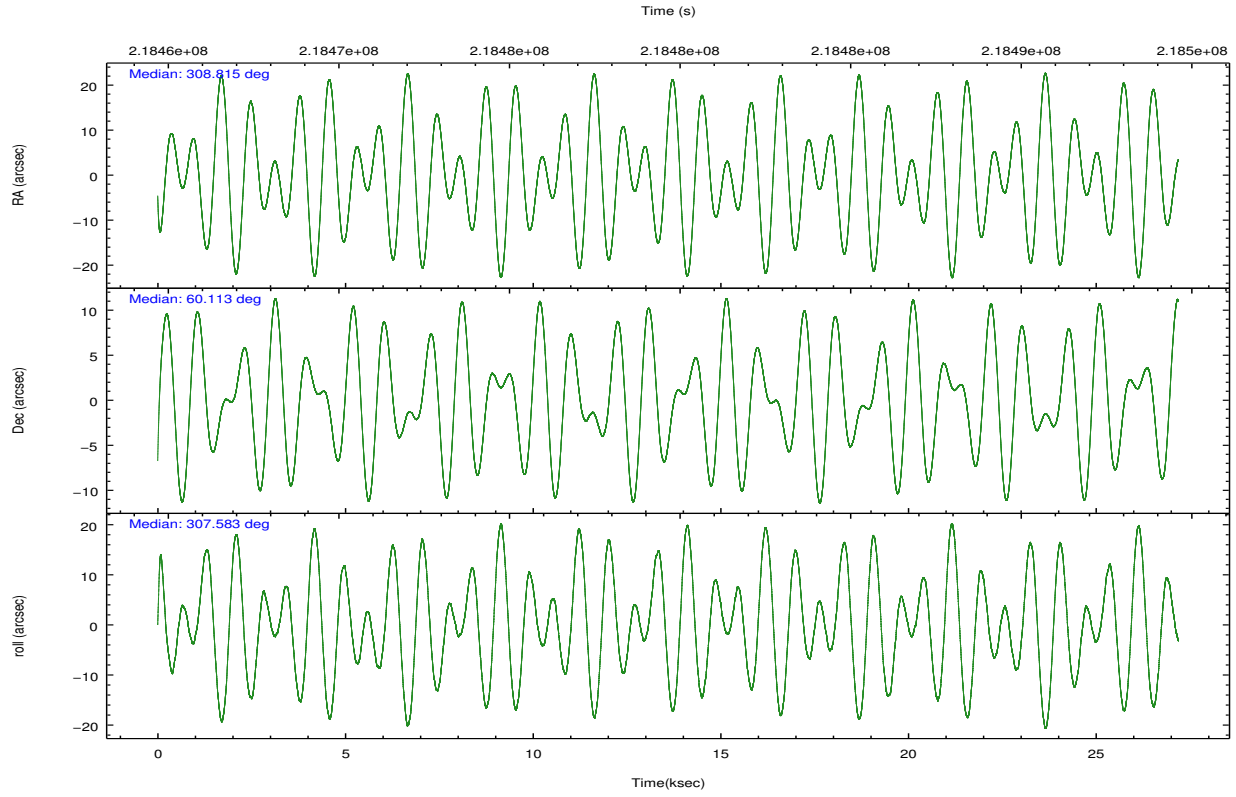
2.1.4 Events

	ccd 2	ccd 3	ccd 5	ccd 6	ccd 7	ccd 8		ccd 2	ccd 3	ccd 5	ccd 6	ccd 7	ccd 8
level 1 events	222135	209284	320644	217861	294796	280234	grade 0 events	11140	10727	19125	10200	13900	20862
rejected events	196564	184761	171388	192305	166412	212905		5%	5%	5%	4%	4%	7%
rejected %	88%	88%	53%	88%	56%	75%	grade 1 events	140	152	783	100	292	199
								0%	0%	0%	0%	0%	0%
							grade 2 events	5401	4793	43292	5436	26222	14354
								2%	2%	13%	2%	8%	5%
							grade 3 events	2326	2330	5629	2517	11784	7605
								1%	1%	1%	1%	3%	2%
							grade 4 events	2364	2412	5518	2351	11595	6905
								1%	1%	1%	1%	3%	2%
							grade 5 events	8367	9407	23132	9666	27520	12884
								3%	4%	7%	4%	9%	4%
							grade 6 events	4342	4264	75717	5059	64904	17609
								1%	2%	23%	2%	22%	6%
							grade 7 events	188055	175199	147448	182532	138579	199816
								84%	83%	45%	83%	47%	71%

2.2 Compared Parameters

Parameter	Planned	Actual	Parameter	Planned	Actual
Instrument	ACIS	ACIS	Obspar format version number	7	7
Detector	ACIS-235678	ACIS-235678	Obspar file type	PREDICTED	ACTUAL
Grating	NONE	NONE	Obspar update status	NONE	UPDATED
Data mode	FAINT	FAINT	Number of optional ACIS chips dropped	0	0
Observation mode	POINTING	POINTING	On-chip summing requested	N	N
[deg] Pointing RA	308.763987	308.8148053929657	Subarray requested	NONE	NONE
[deg] Pointing Dec	60.123000	60.11298385000654	Alternating exposures requested	N	N
[deg] Pointing Roll	307.469299	307.5818626106572	[s] Primary exposure time	0.000000	3.2
[deg] Roll angle	310.000000	310.000000			
[deg] Roll tolerance	50.000000	50.000000			
Roll constraint allows 180D rotation	N	N			
[mm] SIM focus pos	-0.684267	-0.6828225247311905			
[mm] SIM defocus	0	0.001444936568705701			
[mm] SIM translation stage pos	-190.132523	-190.1400660498719			
[mm] SIM translation stage offset	0	0.00754346686406393			
[s] Observation start time (MET)	218466240.184000	218465264.31378			
Observation start date	2004-12-03T13:02:56	2004-12-03T12:47:44			
[s] Observation end time (MET)	218493240.184000	218494696.1651			
Observation end date	2004-12-03T20:32:56	2004-12-03T20:58:16			
Read mode	TIMED	TIMED			

2.3 Aspect

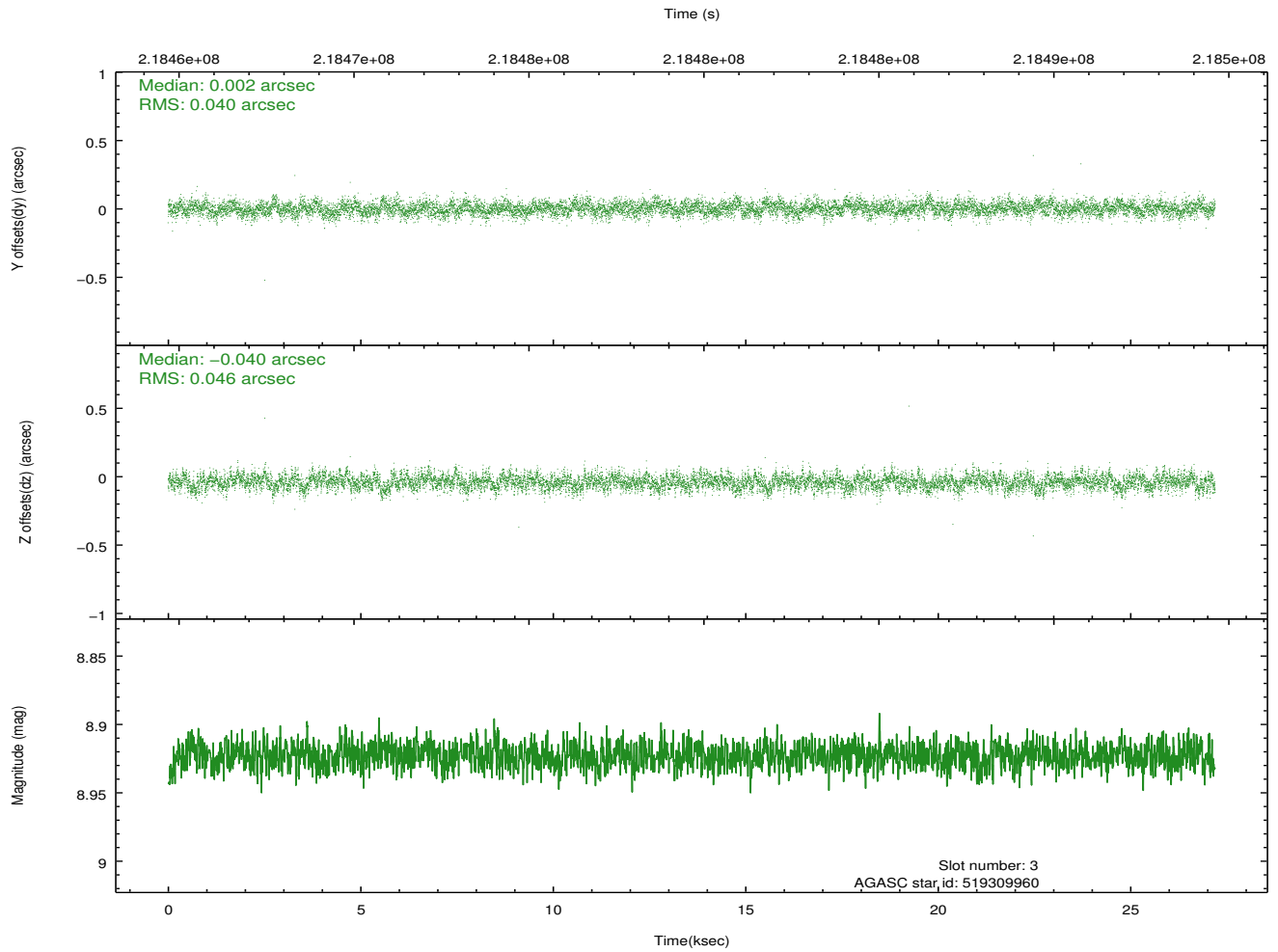
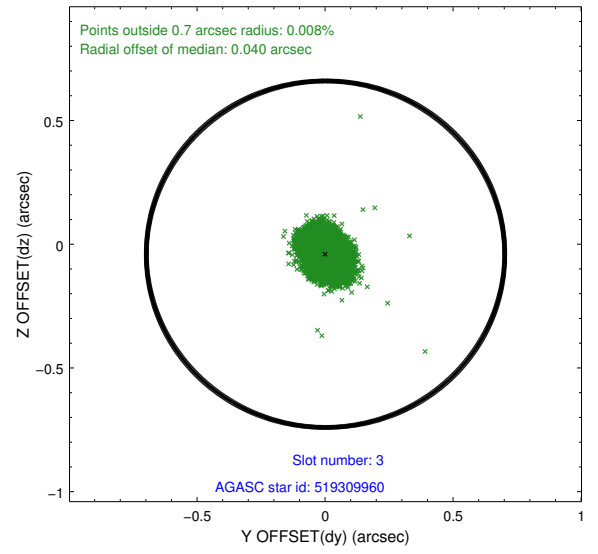
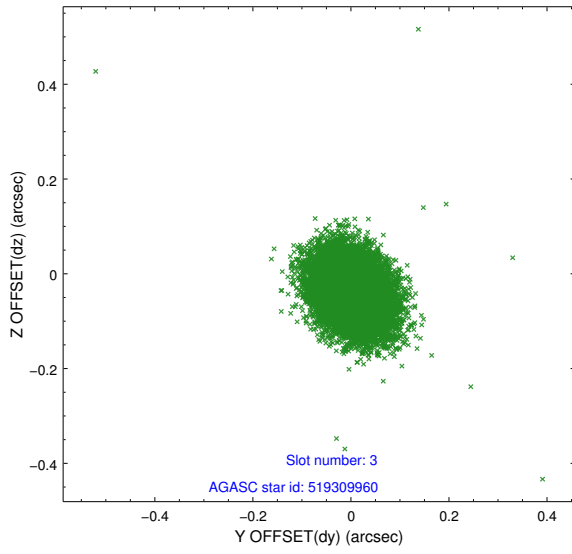


Slot Statistics

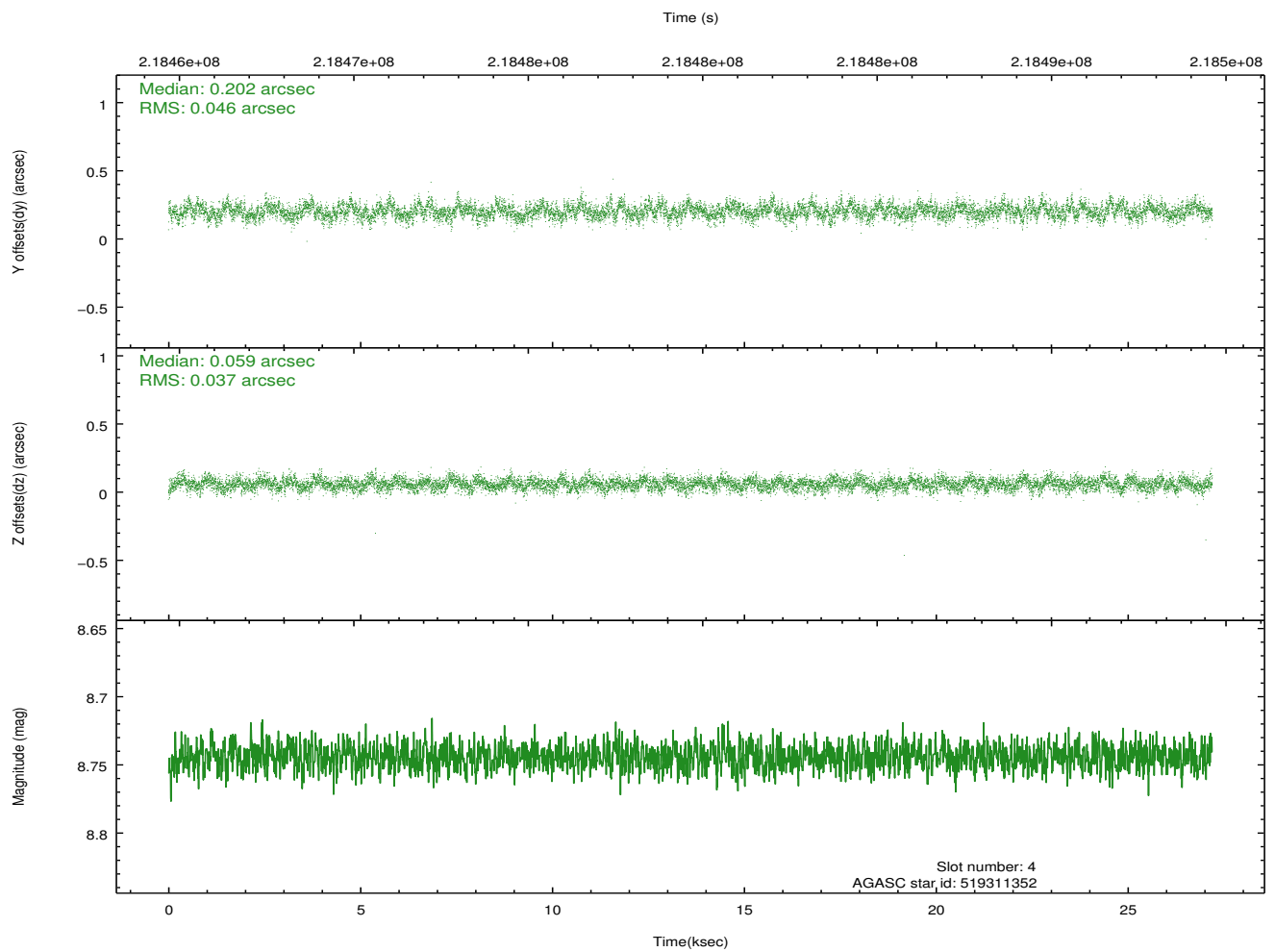
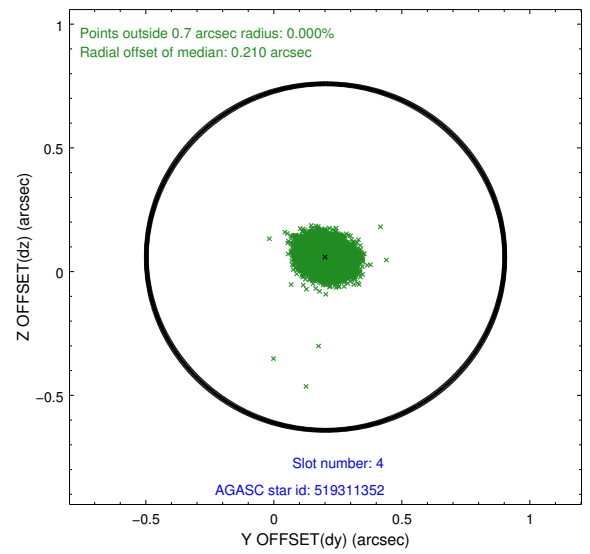
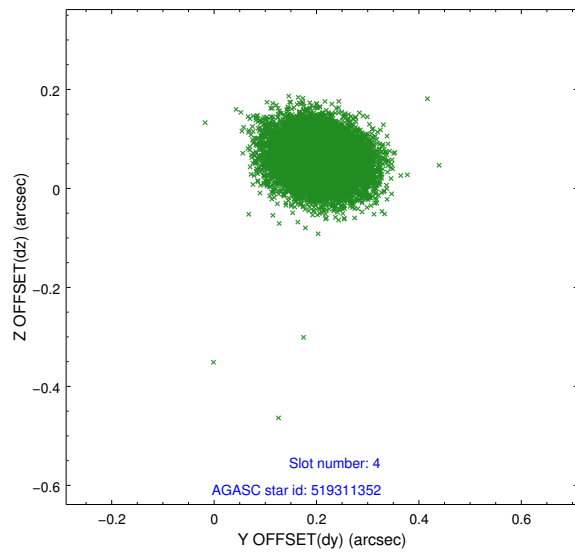
slot	status	id	mag	n_pts	med_dy	med_dz	dr1	dr2	ra	dec	mean_y	mean_z
0	FID	ACIS-S-2	7.10	6634	-0.054	-0.020	0.007	0.012	0.000000	0.000000	-760.02	-1731.89
1	FID	ACIS-S-4	7.20	6634	0.102	0.031	0.006	0.010	0.000000	0.000000	2153.32	176.61
2	FID	ACIS-S-5	7.23	6634	-0.079	-0.003	0.007	0.013	0.000000	0.000000	-1812.81	170.26
3	GUIDE	519309960	8.92	13264	0.002	-0.040	0.063	0.105	308.931528	59.810942	1076.41	-442.35
4	GUIDE	519311352	8.74	13263	0.202	0.059	0.062	0.102	309.050952	59.661888	1634.92	-594.83
5	GUIDE	519319616	9.12	13263	-0.056	-0.001	0.109	0.167	308.290973	59.595846	980.16	-1836.51
6	GUIDE	554838576	9.32	13259	-0.054	-0.078	0.082	0.133	307.625324	60.310495	-1784.10	-1190.15
7	GUIDE	554839376	7.42	13268	-0.095	0.064	0.063	0.100	308.018563	60.422364	-1666.40	-391.19

2.4 Star Slots

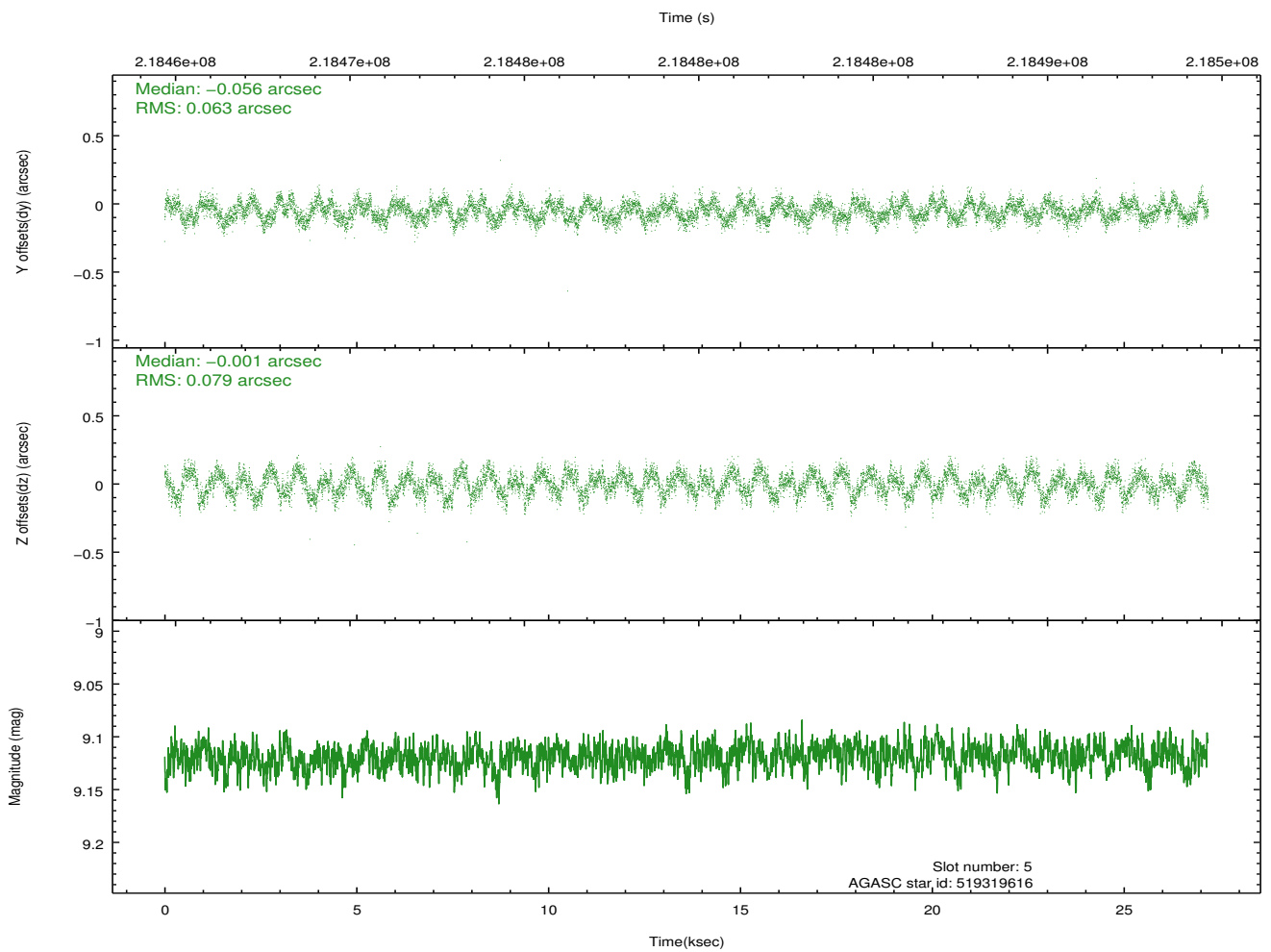
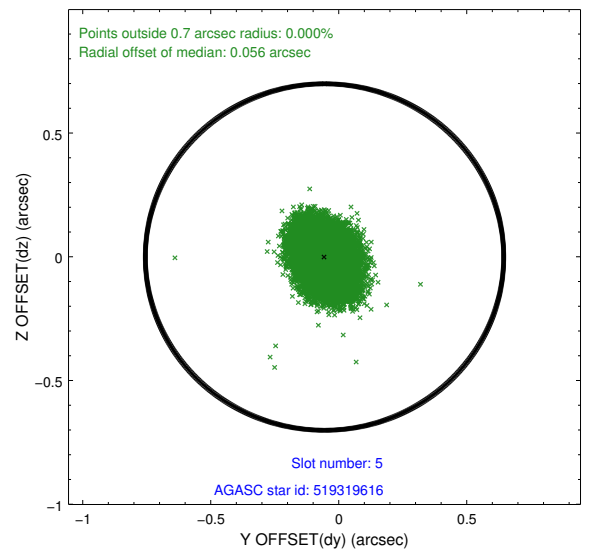
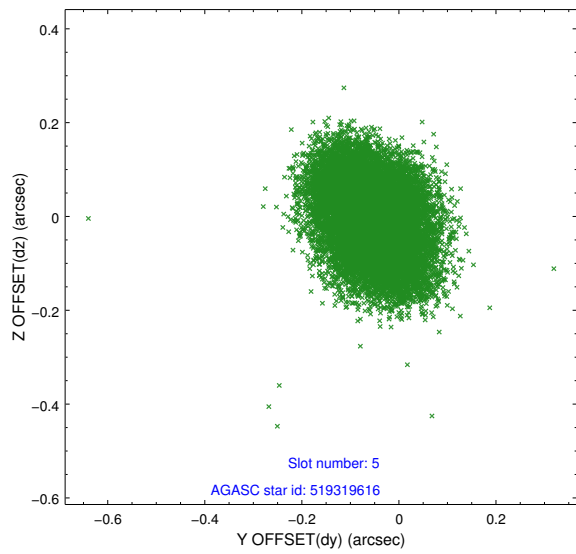
2.4.1 Slot 3



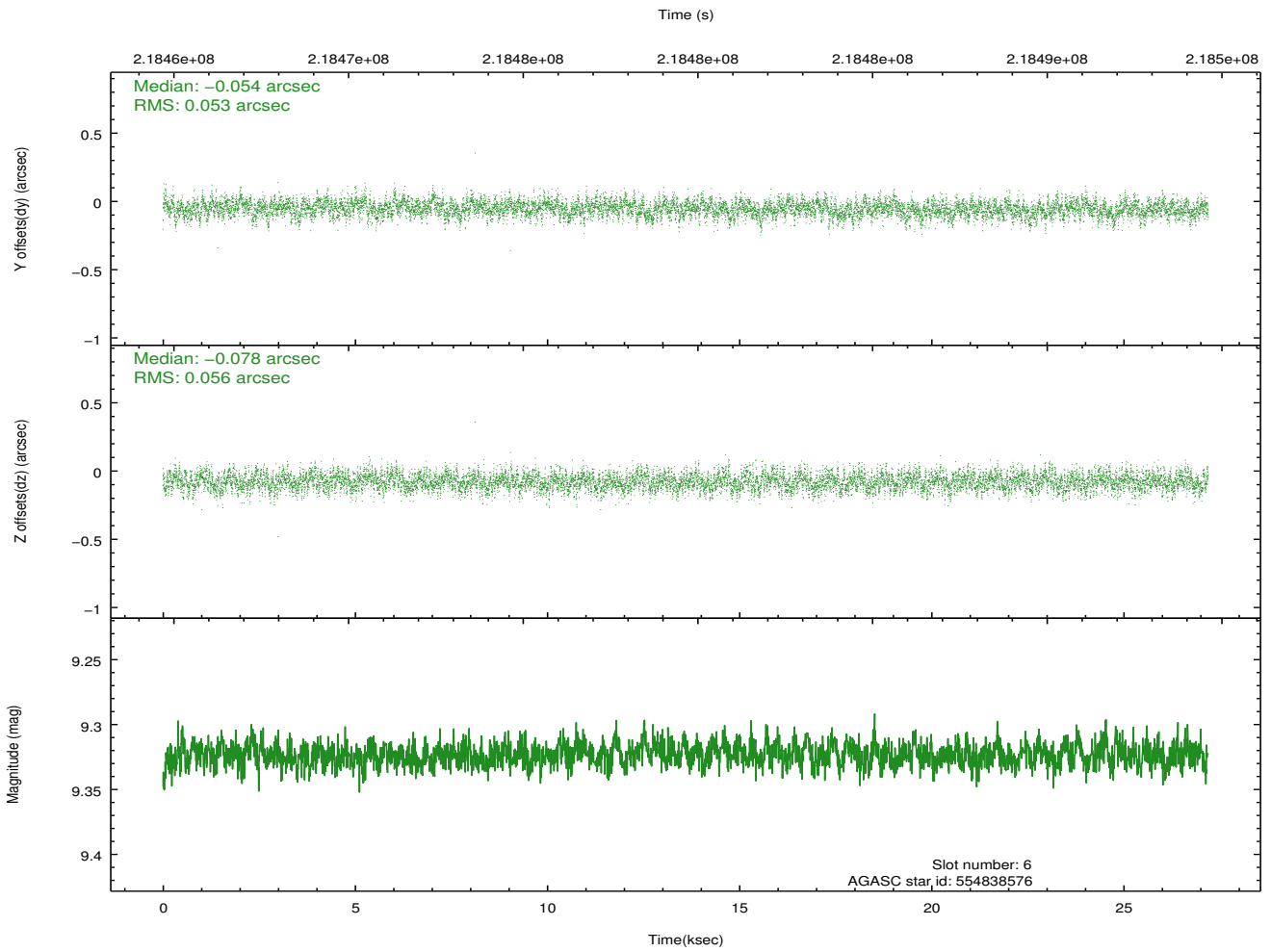
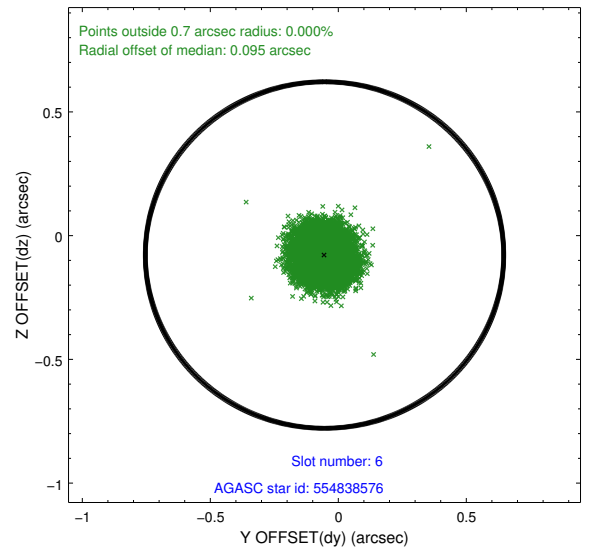
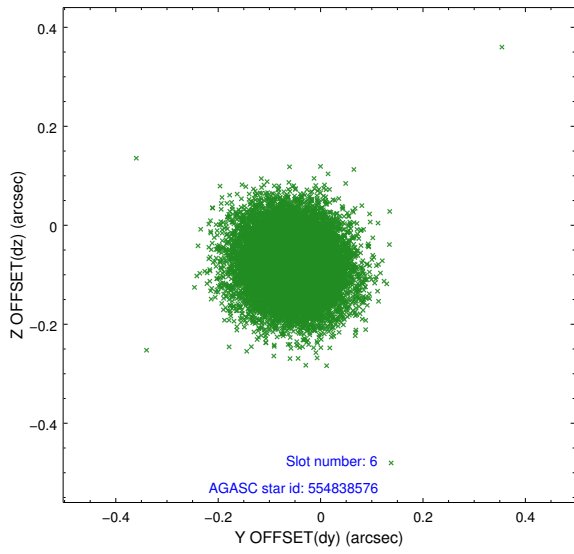
2.4.2 Slot 4



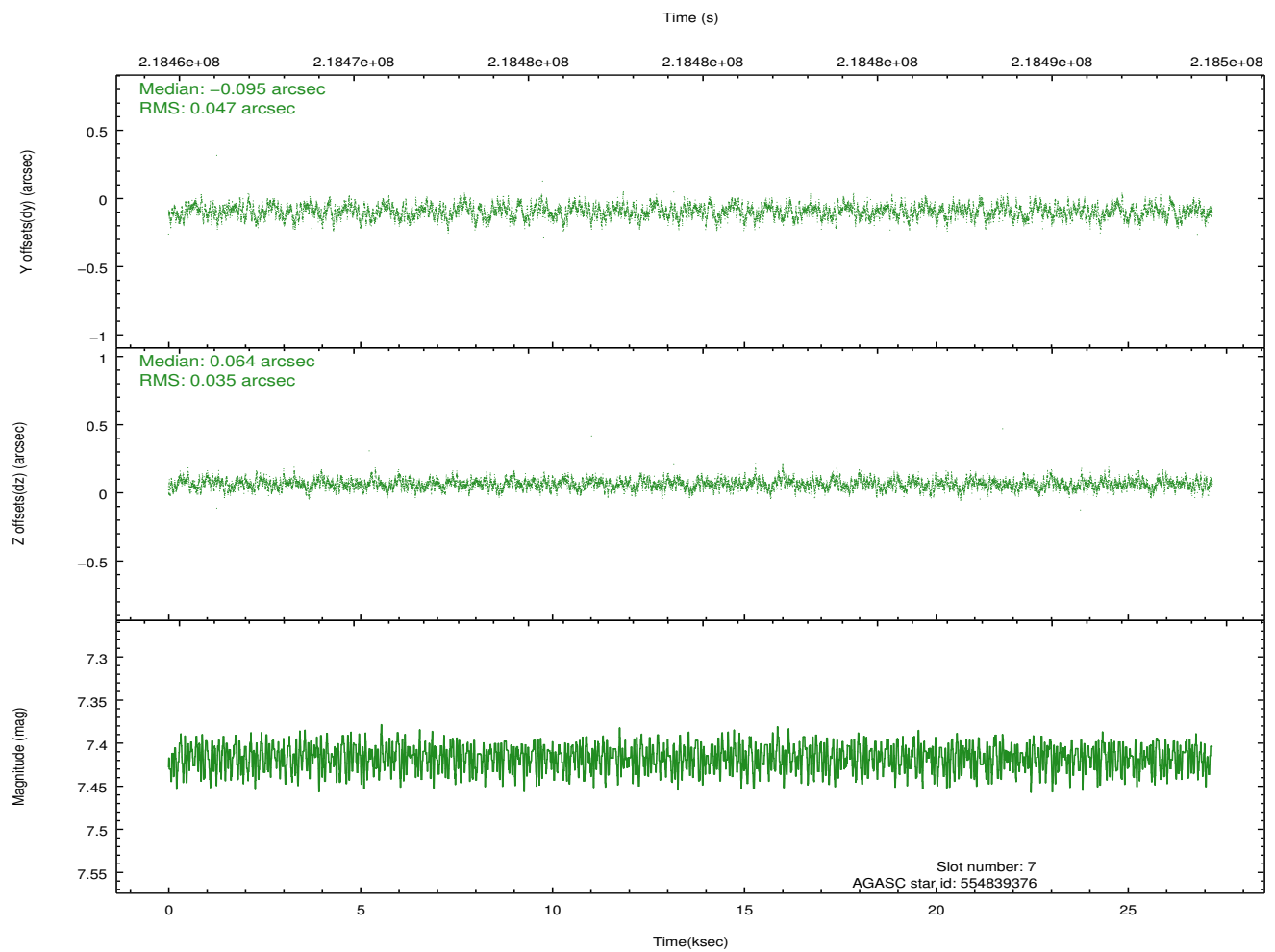
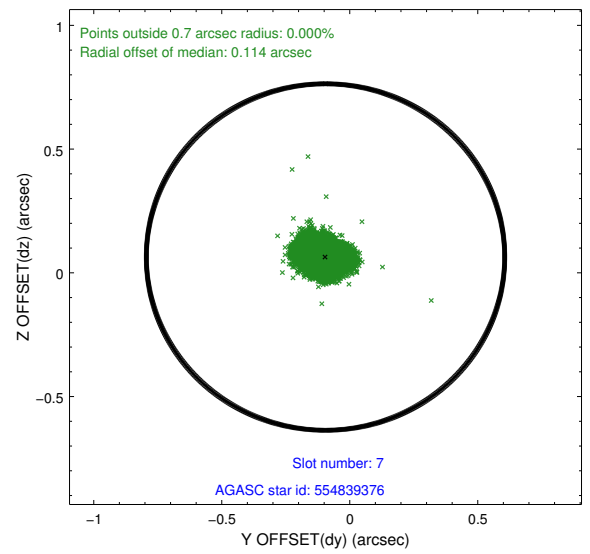
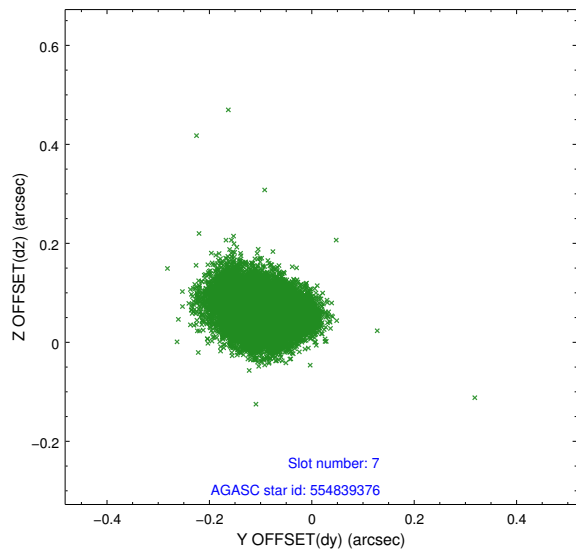
2.4.3 Slot 5



2.4.4 Slot 6

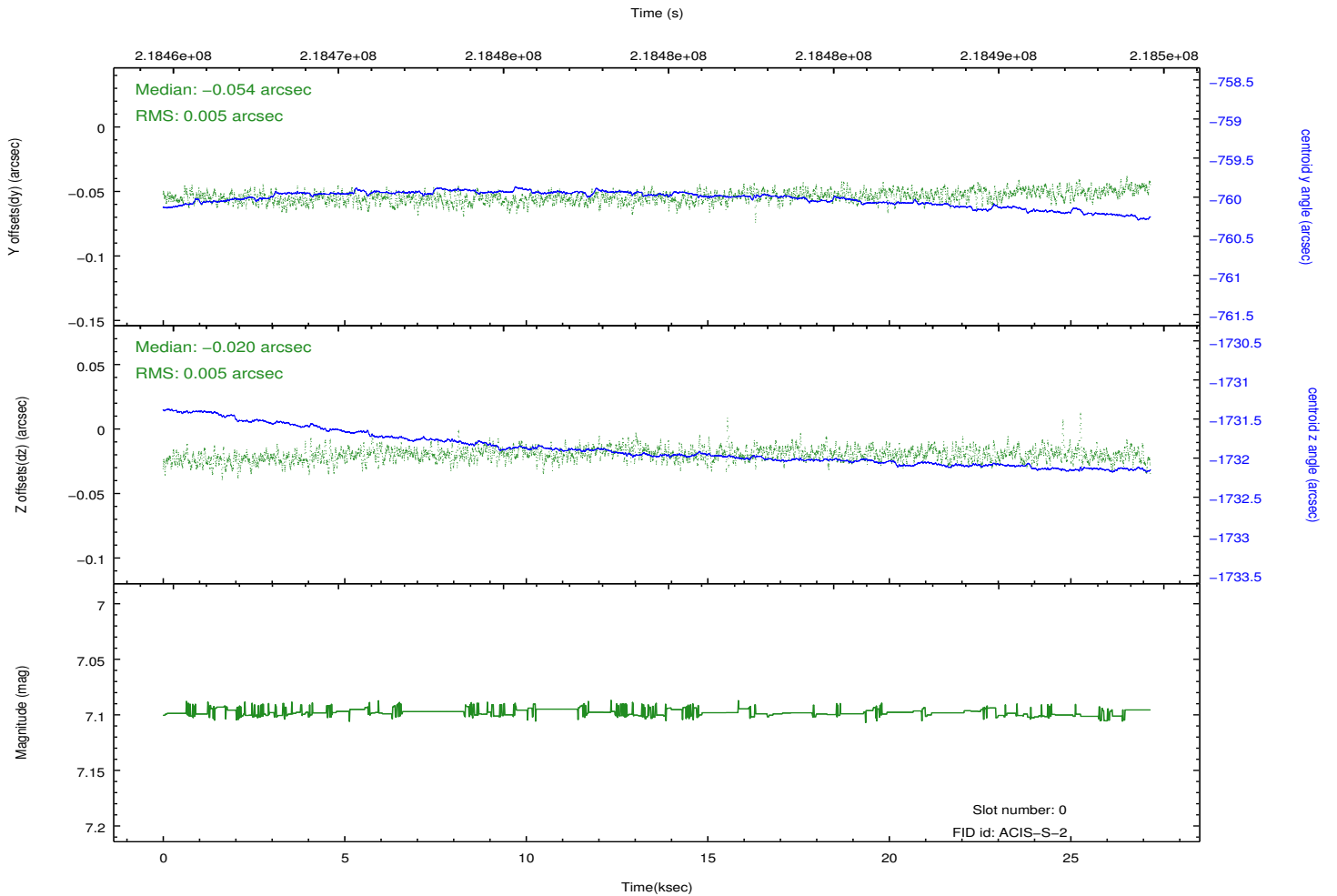
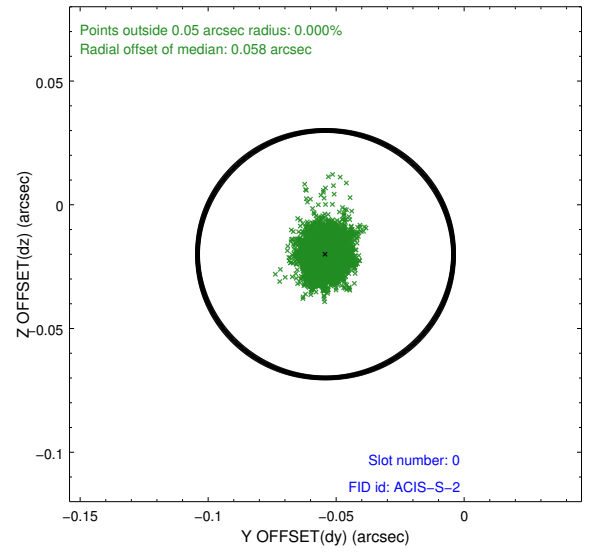
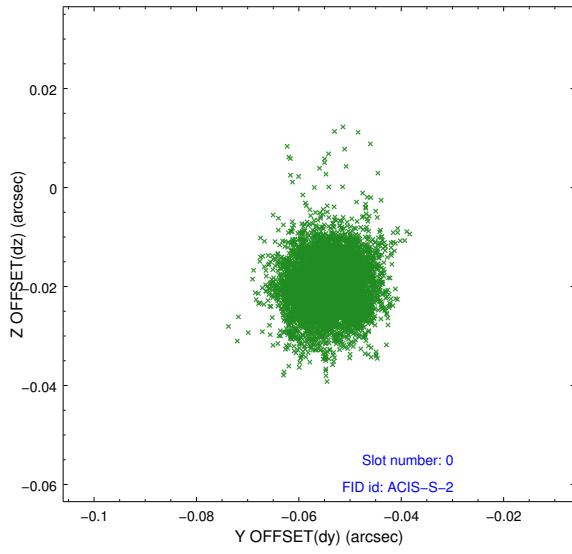


2.4.5 Slot 7

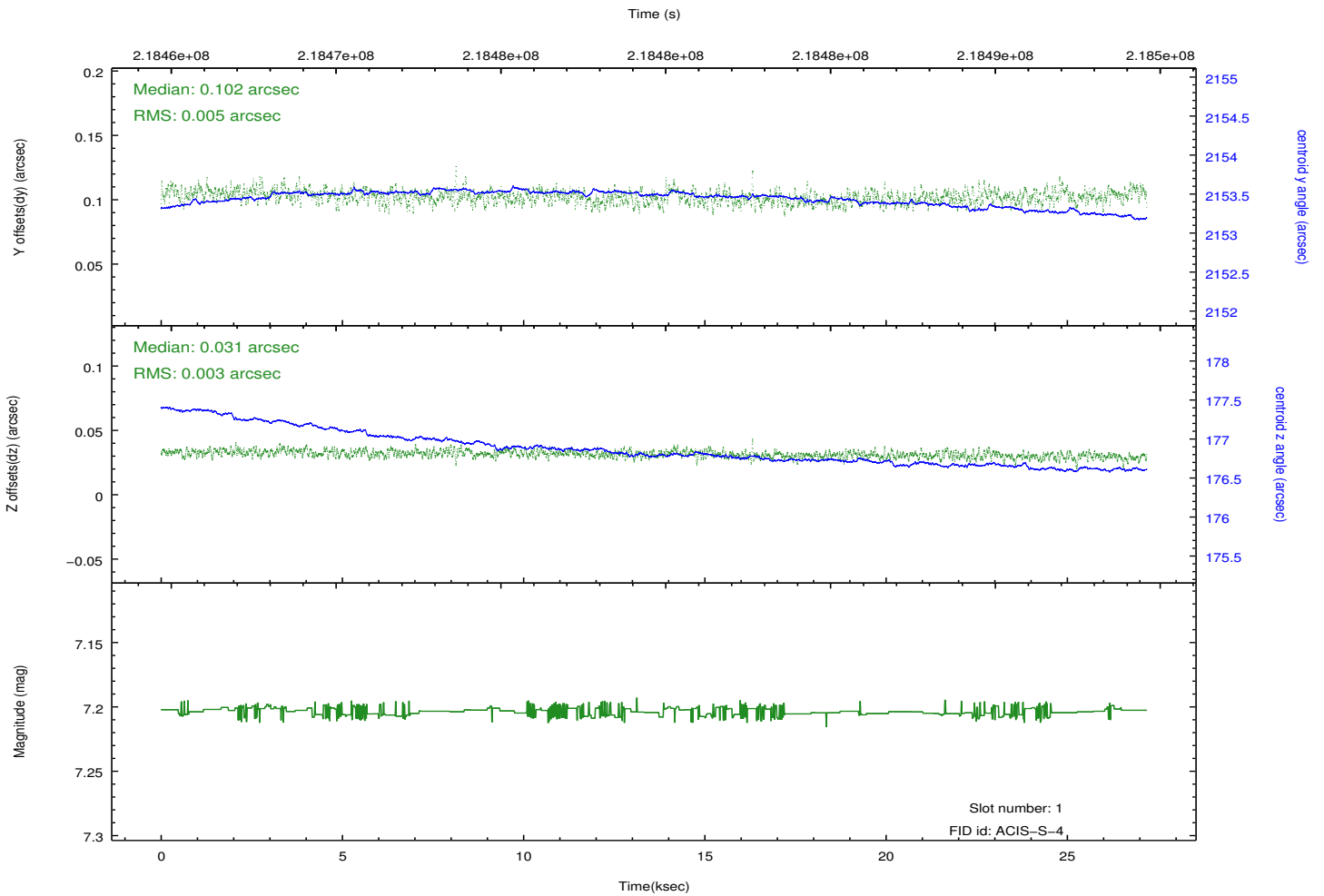
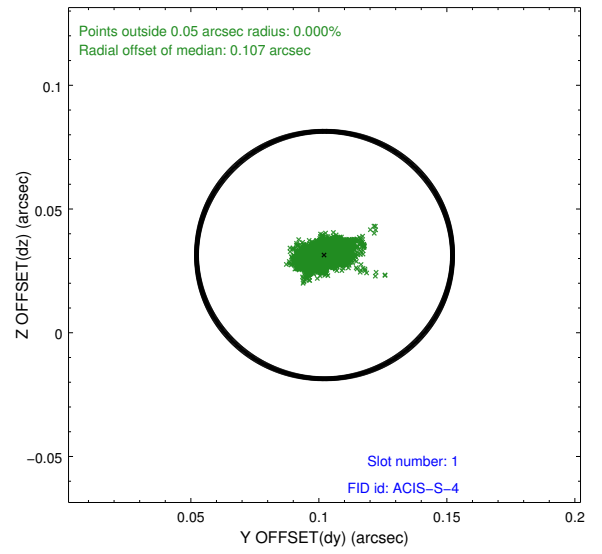
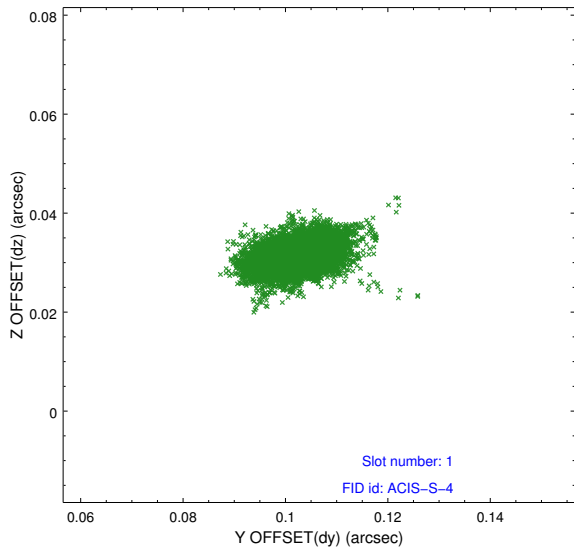


2.5 FID Slots

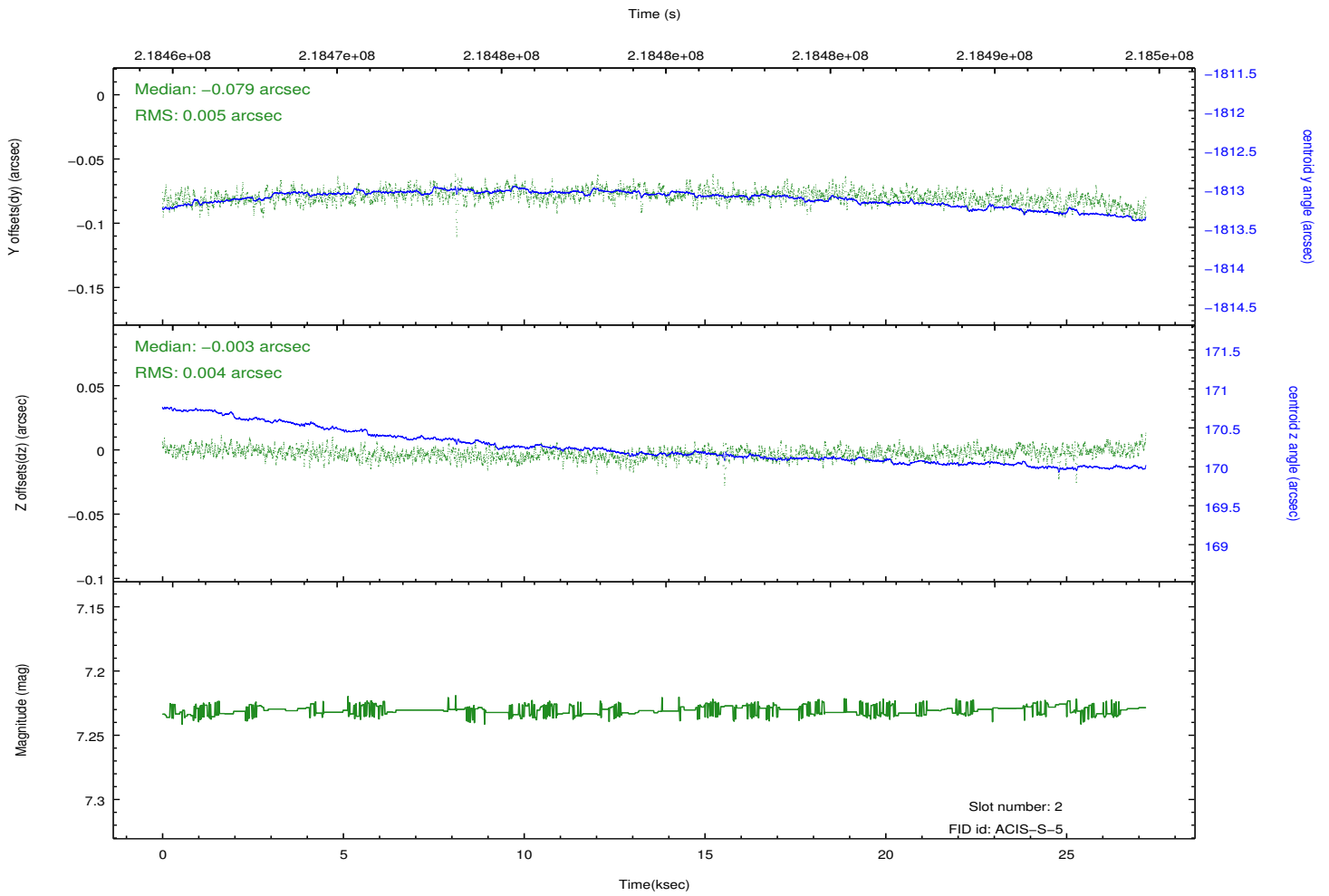
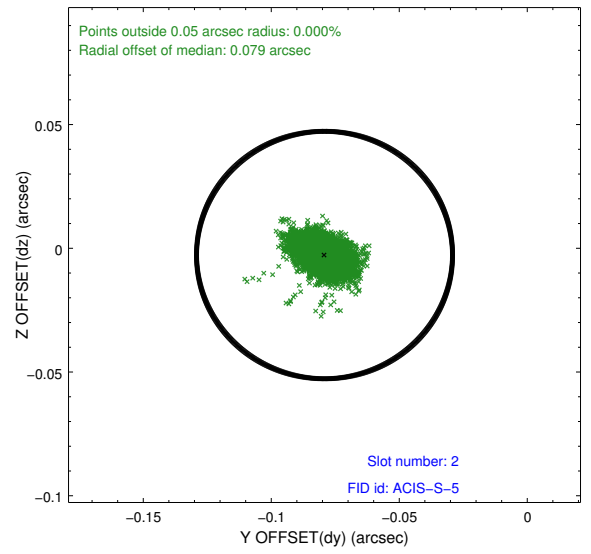
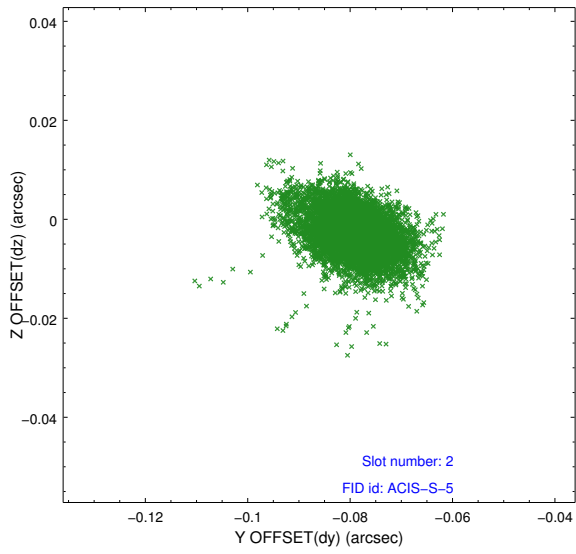
2.5.1 Slot 0



2.5.2 Slot 1



2.5.3 Slot 2



A Summary

A.1 Status

V&V Scientist	Jen Lauer
V&V Date (YYYY-MM-DD)	2013.01.04
V&V Edition	1
V&V Disposition and Status	OK
V&V Charge Time	26.95679

A.2 Comments

Roll constraint satisfied.