

V&V Reference Report

L2 ASCDS Version : 8.4.5

Observation 5123 - L2 Version 3
Chandra X-Ray Center

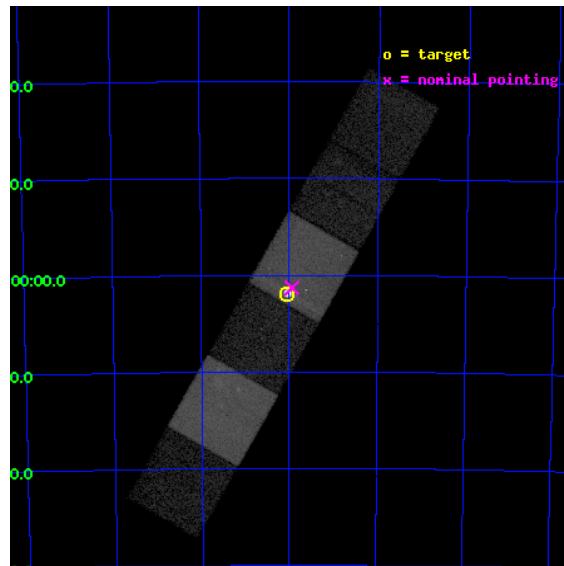
L2 Processing Date : Nov 9 2012

Contents

1	Front	2
2	OBI	3
2.1	OBI	3
2.1.1	Images	3
2.1.2	Bias	3
2.1.3	Parameters	4
2.1.4	Events	4
2.2	Compared Parameters	5
2.3	Aspect	6
2.4	Star Slots	9
2.4.1	Slot 3	9
2.4.2	Slot 4	10
2.4.3	Slot 5	11
2.4.4	Slot 6	12
2.4.5	Slot 7	13
2.5	FID Slots	14
2.5.1	Slot 0	14
2.5.2	Slot 1	15
2.5.3	Slot 2	16
A	Summary	17
A.1	Status	17
A.2	Comments	17

1 Front

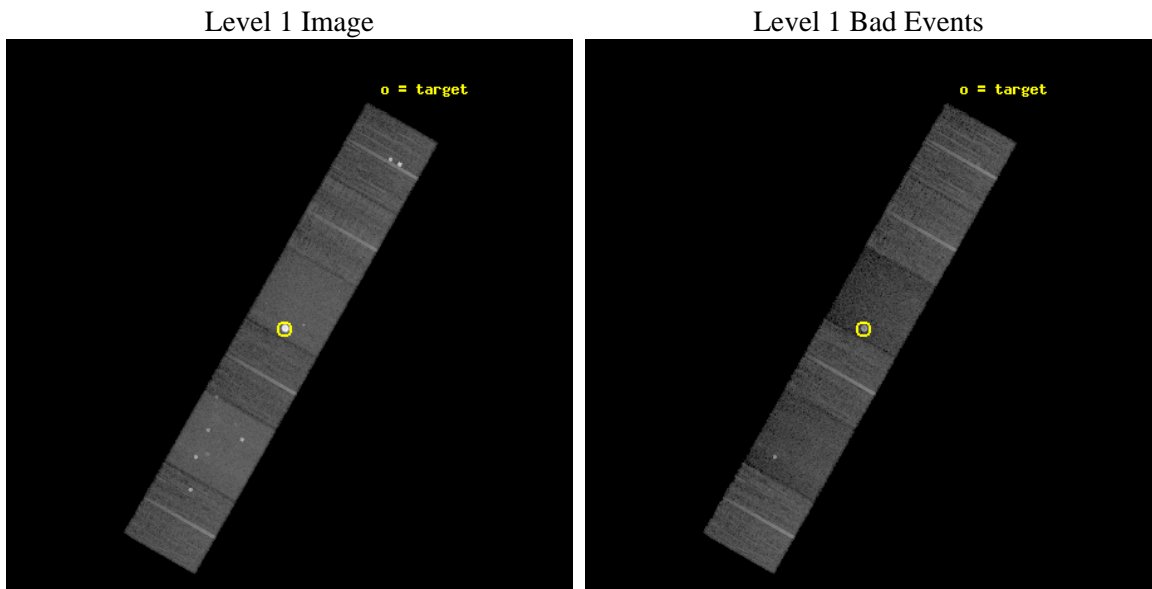
seq_num	590321	Sequence number
obs_id	5123	Observation id
title	AO5A ACIS-S Calibration Observations of E0102-72	Proposal title
observer	Dr. CXC Calibration	Principal investigator
object	E0102-72[S3,-120,1,0,0]	Source name
dtycycle	0	
cycle	P	events from which exps? Prim/Second/Both
ra_targ	16.01	Observer's specified target RA [deg]
dec_targ	-72.032028	Observer's specified target Dec [deg]
ra_nom	15.985118517578	Nominal RA [deg]
dec_nom	-72.021873750395	Nominal Dec [deg]
roll_nom	299.69945505325	Nominal Roll [deg]
revision	3	Processing version of data
ontime	20582.399923325	Sum of GTIs [s]
livetime	20321.773182262	Livetime [s]
ontime4	20582.399923325	Sum of GTIs [s]
ontime5	20582.399923325	Sum of GTIs [s]
ontime6	20579.158933133	Sum of GTIs [s]
ontime7	20582.399923325	Sum of GTIs [s]
ontime8	20582.399923325	Sum of GTIs [s]
ontime9	20582.399923325	Sum of GTIs [s]
l2events	333589	Number of level 2 events



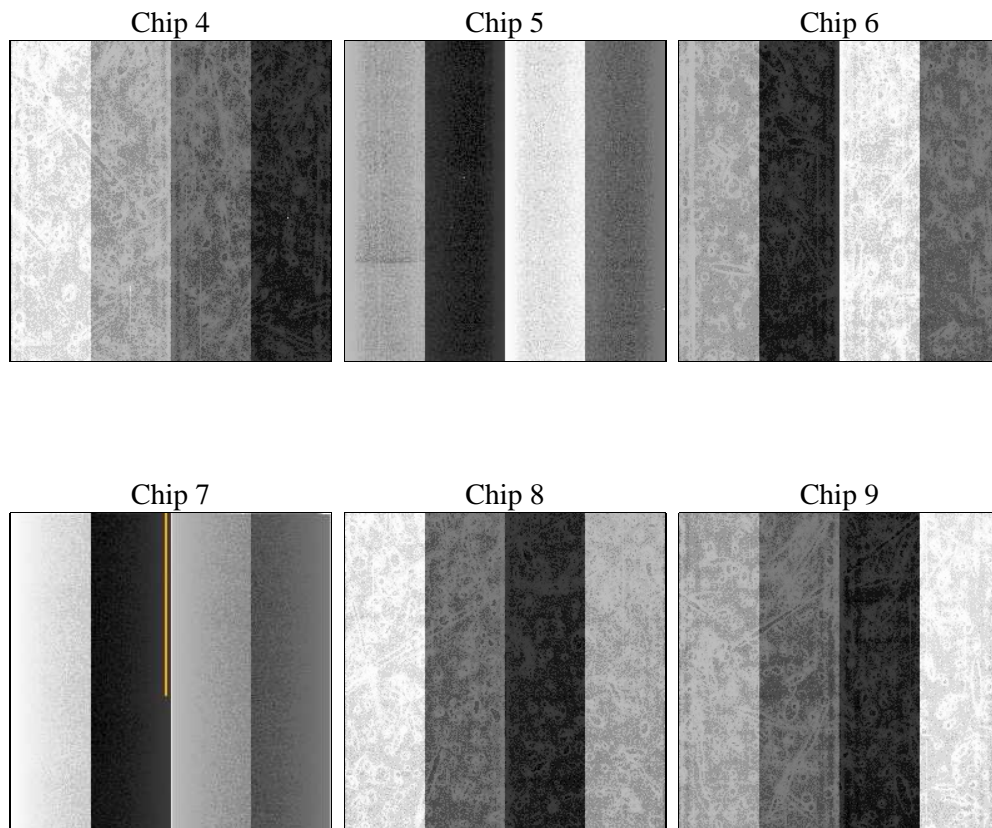
2 OBI

2.1 OBI

2.1.1 Images



2.1.2 Bias



2.1.3 Parameters

obi_num	0	Obi number	sched_exp_time	20624.000000	[s] Scheduled observation exposure time
ascdsver	8.4.5	Processing system revision	ontime	20582.399923325	Sum of GTIs [s]
caldbver	4.5.2	 	ontime4	20582.399923325	Sum of GTIs [s]
date	2012-11-09T08:19:29	Date and time of file creation	ontime5	20582.399923325	Sum of GTIs [s]
revision	3	Processing version of data	ontime6	20579.158933133	Sum of GTIs [s]
			ontime7	20582.399923325	Sum of GTIs [s]
			ontime8	20582.399923325	Sum of GTIs [s]
			ontime9	20582.399923325	Sum of GTIs [s]
			l1events	847268	Number of level 1 events

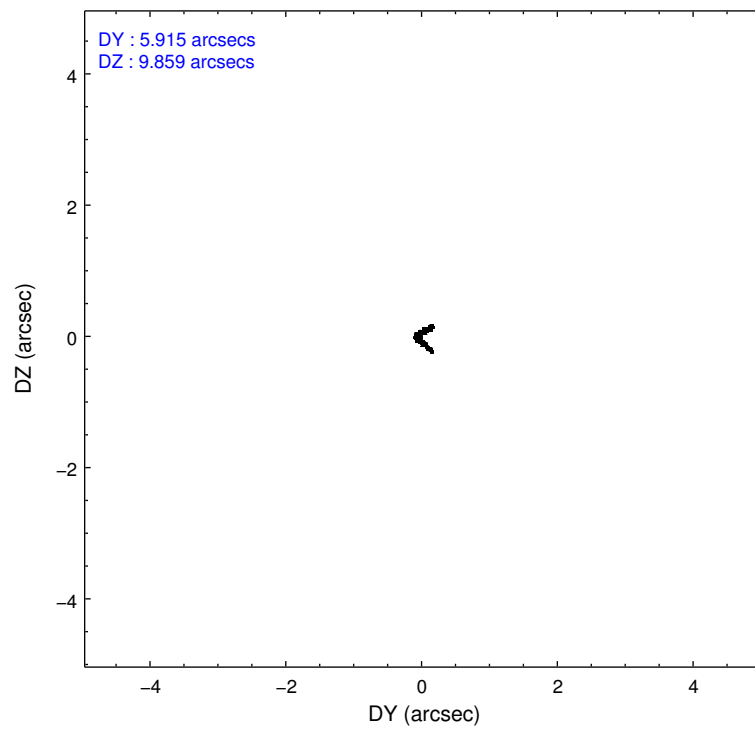
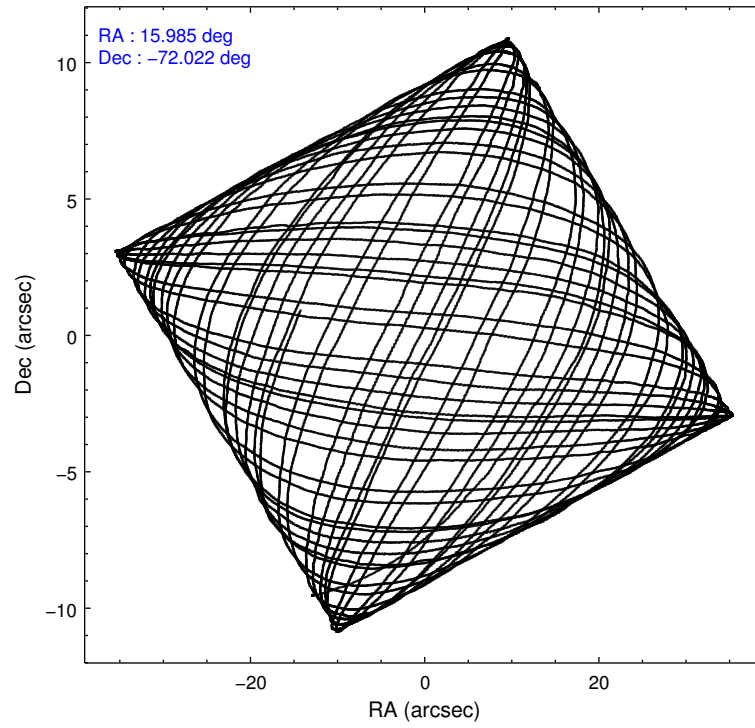
2.1.4 Events

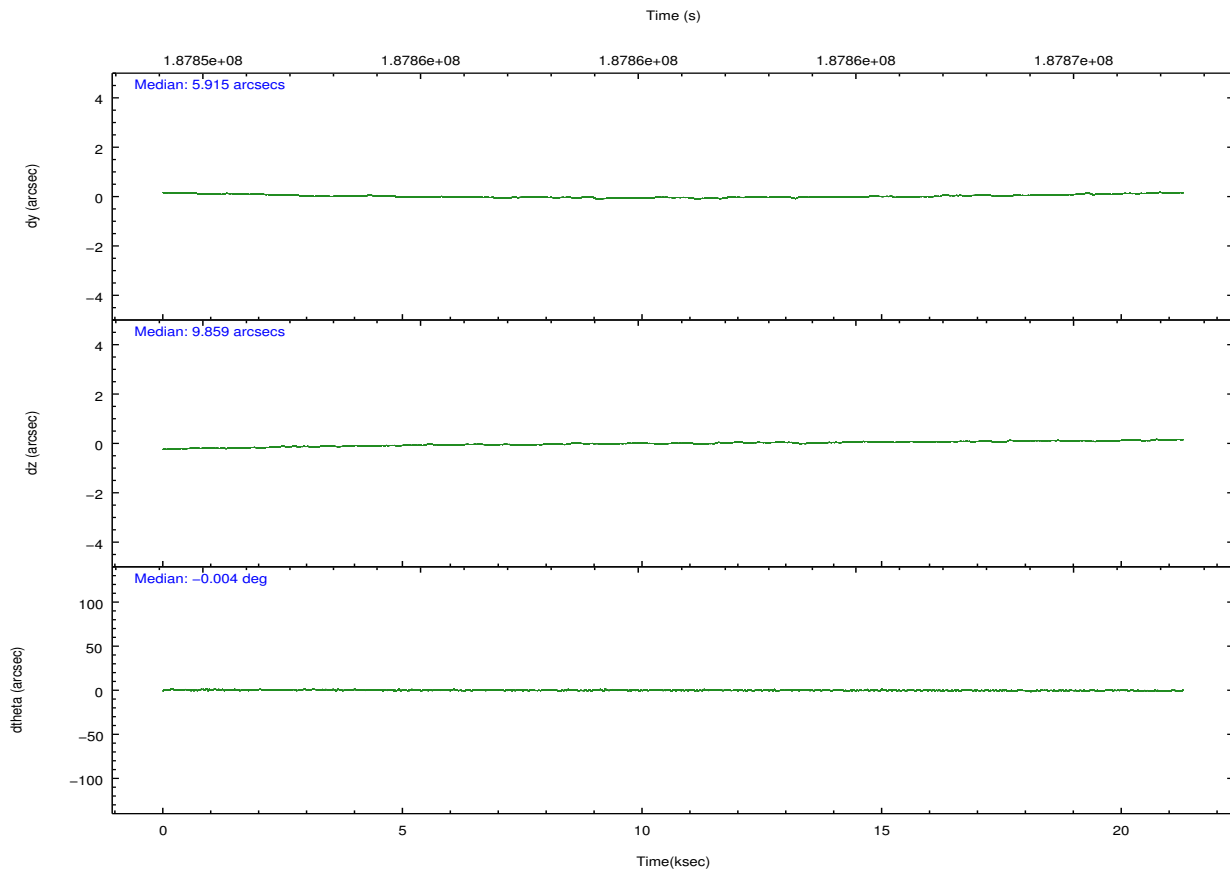
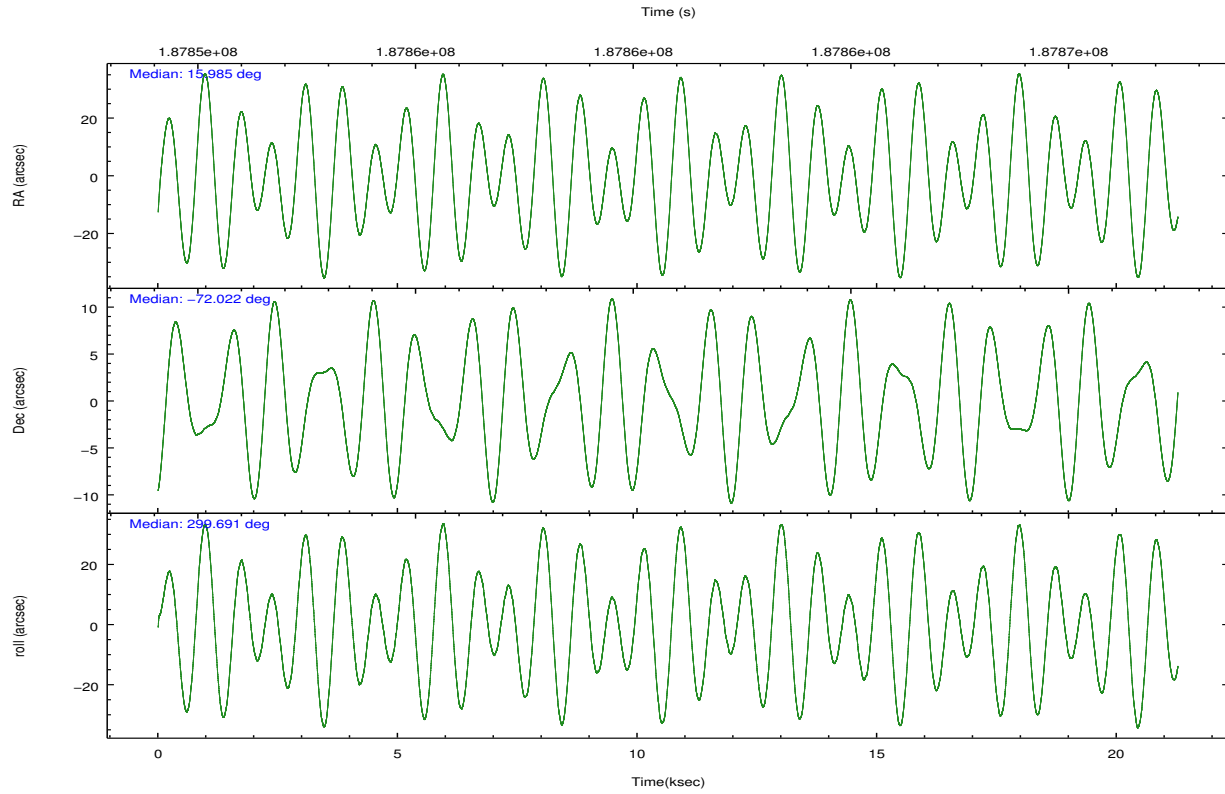
	ccd 4	ccd 5	ccd 6	ccd 7	ccd 8	ccd 9		ccd 4	ccd 5	ccd 6	ccd 7	ccd 8	ccd 9
level 1 events	109442	147254	95569	263457	116700	114846	grade 0 events	9023	16035	6826	52455	9320	23578
rejected events	93934	57806	82019	51628	87603	84430		8%	10%	7%	19%	7%	20%
rejected %	85%	39%	85%	19%	75%	73%	grade 1 events	116	1530	47	969	77	135
								0%	1%	0%	0%	0%	0%
							grade 2 events	2478	25091	2460	54549	6493	2217
								2%	17%	2%	20%	5%	1%
							grade 3 events	1181	4660	1093	24209	3037	1214
								1%	3%	1%	9%	2%	1%
							grade 4 events	1159	4606	1164	23310	2833	1207
								1%	3%	1%	8%	2%	1%
							grade 5 events	3291	10185	3276	12556	4816	3688
								3%	6%	3%	4%	4%	3%
							grade 6 events	1668	39072	2008	57349	7416	2204
								1%	26%	2%	21%	6%	1%
							grade 7 events	90526	46075	78695	38060	82708	80603
								82%	31%	82%	14%	70%	70%

2.2 Compared Parameters

Parameter	Planned	Actual	Parameter	Planned	Actual
Instrument	ACIS	ACIS	Obspar format version number	7	7
Detector	ACIS-456789	ACIS-456789	Obspar file type	PREDICTED	ACTUAL
Grating	NONE	NONE	Obspar update status	NONE	UPDATED
Data mode	VFAINT	VFAINT	Number of optional ACIS chips dropped	0	0
Observation mode	POINTING	POINTING	On-chip summing requested	N	N
[deg] Pointing RA	15.908376	15.98511851757758	Subarray requested	NONE	NONE
[deg] Pointing Dec	-72.008421	-72.02187375039517	Alternating exposures requested	N	N
[deg] Pointing Roll	299.469828	299.6994550532474	[s] Primary exposure time	0.000000	3.2
[s] Window start time (MET)	181353664.184000	181353664.184000			
[s] Window stop time (MET)	189216064.184000	189216064.184000			
[mm] SIM focus pos	-0.684267	-0.6828225247311905			
[mm] SIM defocus	0	0.001444936568705701			
[mm] SIM translation stage pos	-190.132523	-190.1400660498719			
[mm] SIM translation stage offset	0	0.00754346686406393			
[s] Observation start time (MET)	187850824.184000	187849626.6223			
Observation start date	2003-12-15T04:46:00	2003-12-15T04:27:06			
[s] Observation end time (MET)	187871448.184000	187871582.63575			
Observation end date	2003-12-15T10:29:44	2003-12-15T10:33:02			
Read mode	TIMED	TIMED			

2.3 Aspect



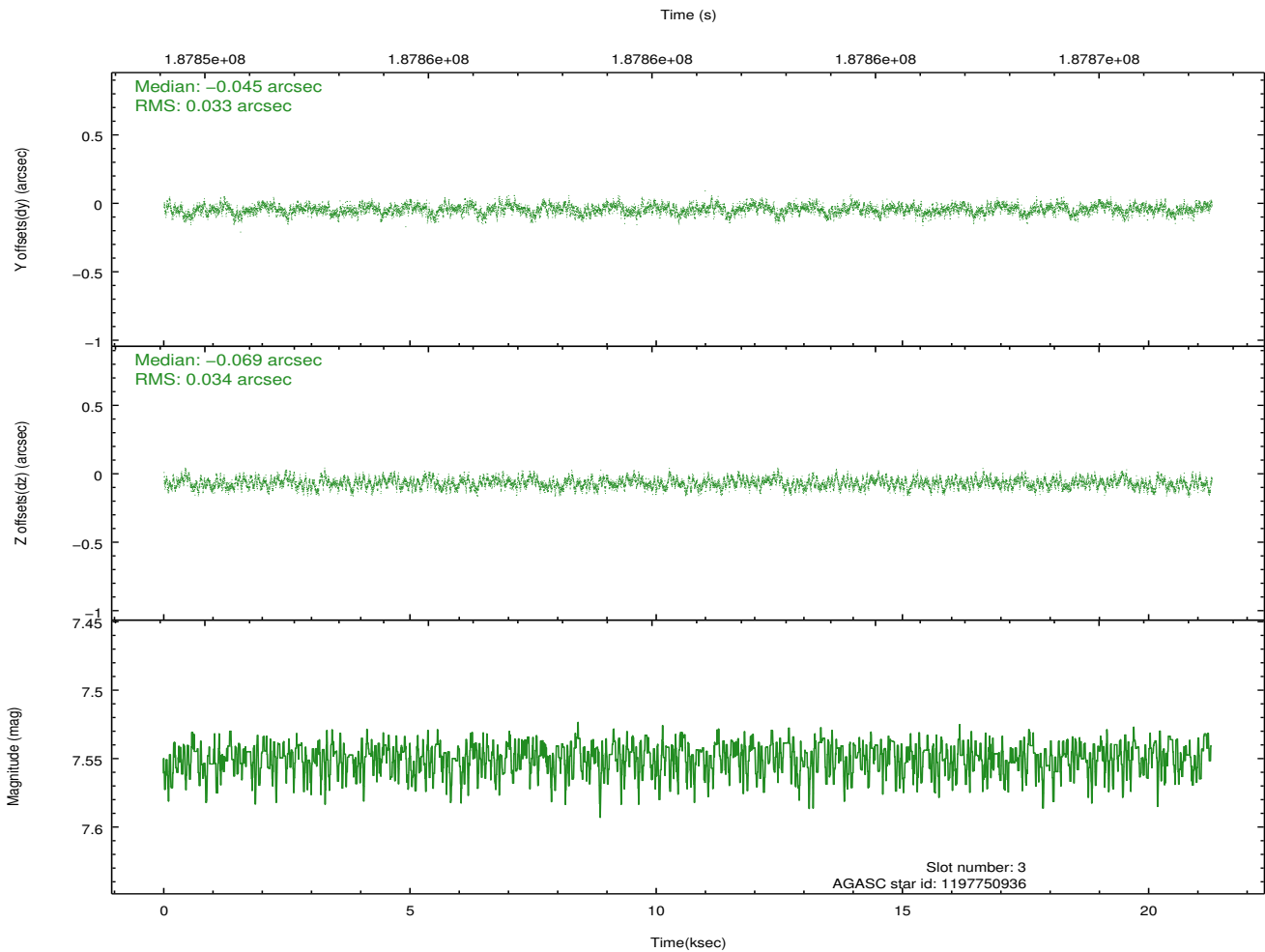
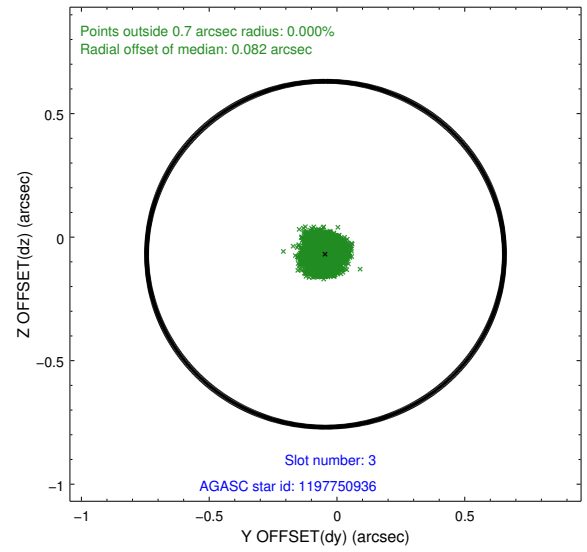
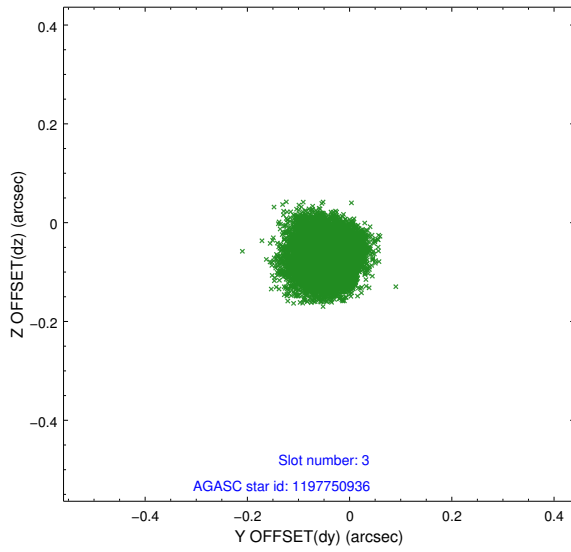


Slot Statistics

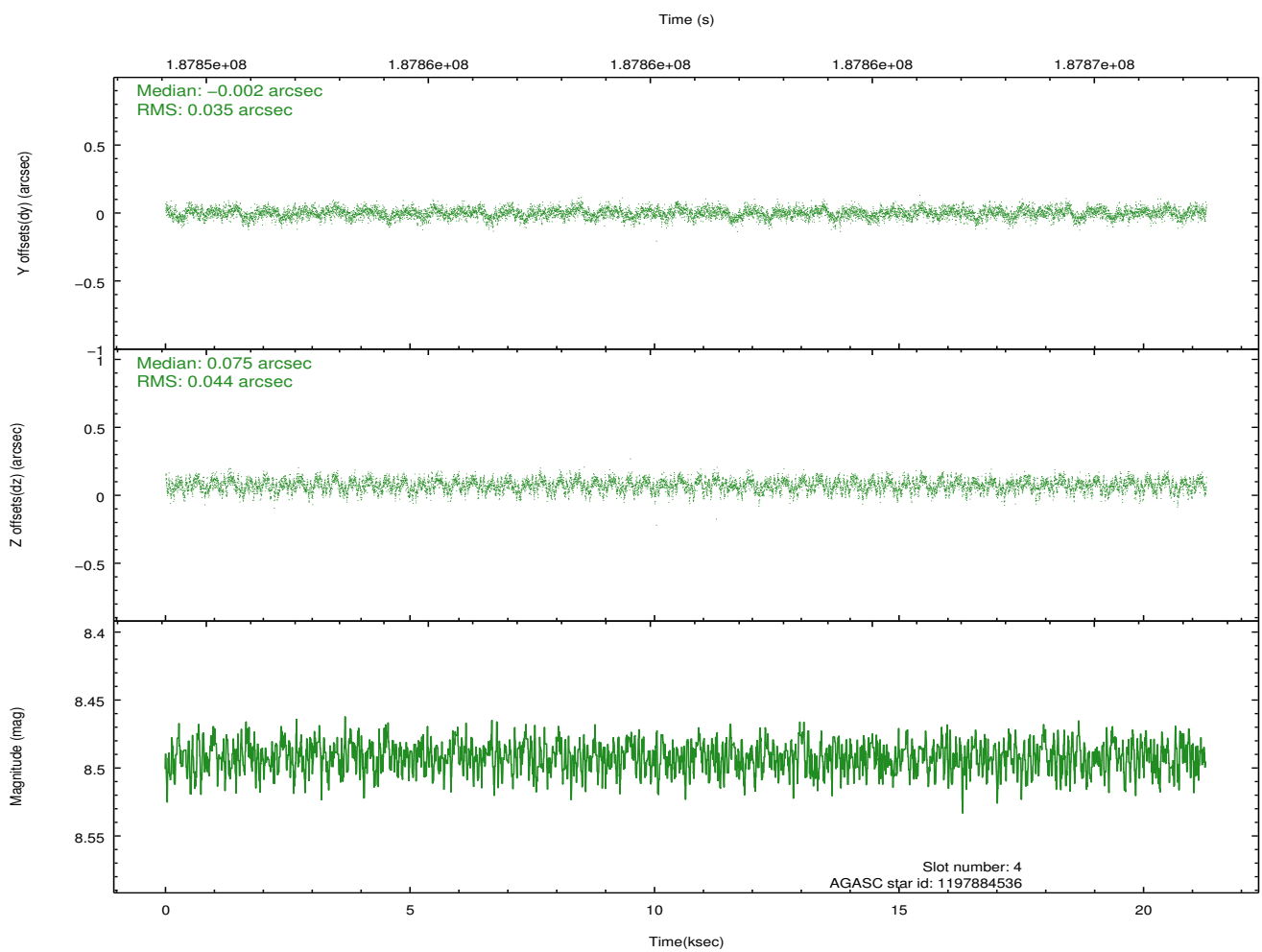
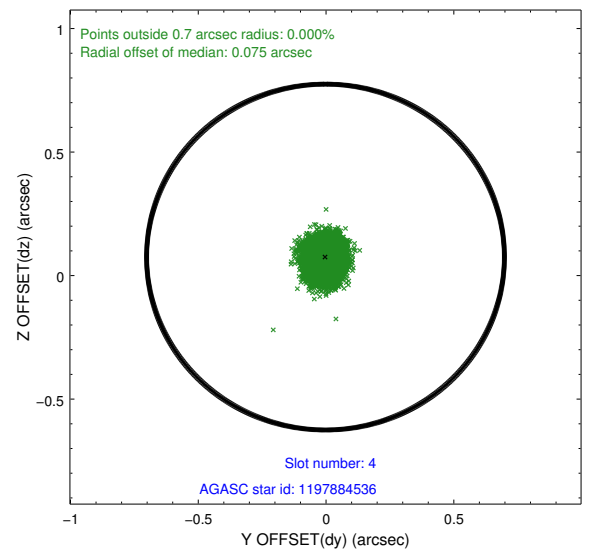
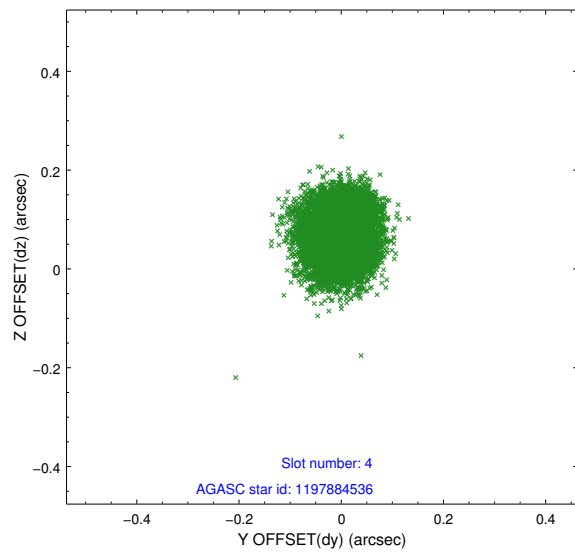
slot	status	id	mag	n_pts	med_dy	med_dz	dr1	dr2	ra	dec	mean_y	mean_z
0	FID	ACIS-S-2	7.10	5191	-0.066	-0.044	0.005	0.010	0.000000	0.000000	-758.72	-1731.13
1	FID	ACIS-S-4	7.20	5191	0.044	0.040	0.006	0.010	0.000000	0.000000	2154.59	177.26
2	FID	ACIS-S-6	7.34	5191	-0.005	0.011	0.007	0.012	0.000000	0.000000	403.54	814.82
3	GUIDE	1197750936	7.55	10381	-0.045	-0.069	0.052	0.081	15.387940	-71.549550	-1727.40	294.95
4	GUIDE	1197884536	8.49	10379	-0.002	0.075	0.061	0.096	17.160729	-71.835289	161.30	1523.26
5	GUIDE	1197884712	8.31	10379	0.111	0.049	0.048	0.078	16.087398	-72.252690	862.89	-261.28
6	GUIDE	1197885328	7.23	10382	0.024	-0.024	0.047	0.077	16.283090	-71.733943	-650.91	853.99
7	GUIDE	1198189696	7.38	10380	-0.087	-0.030	0.047	0.076	15.223750	-72.697522	1803.26	-1860.25

2.4 Star Slots

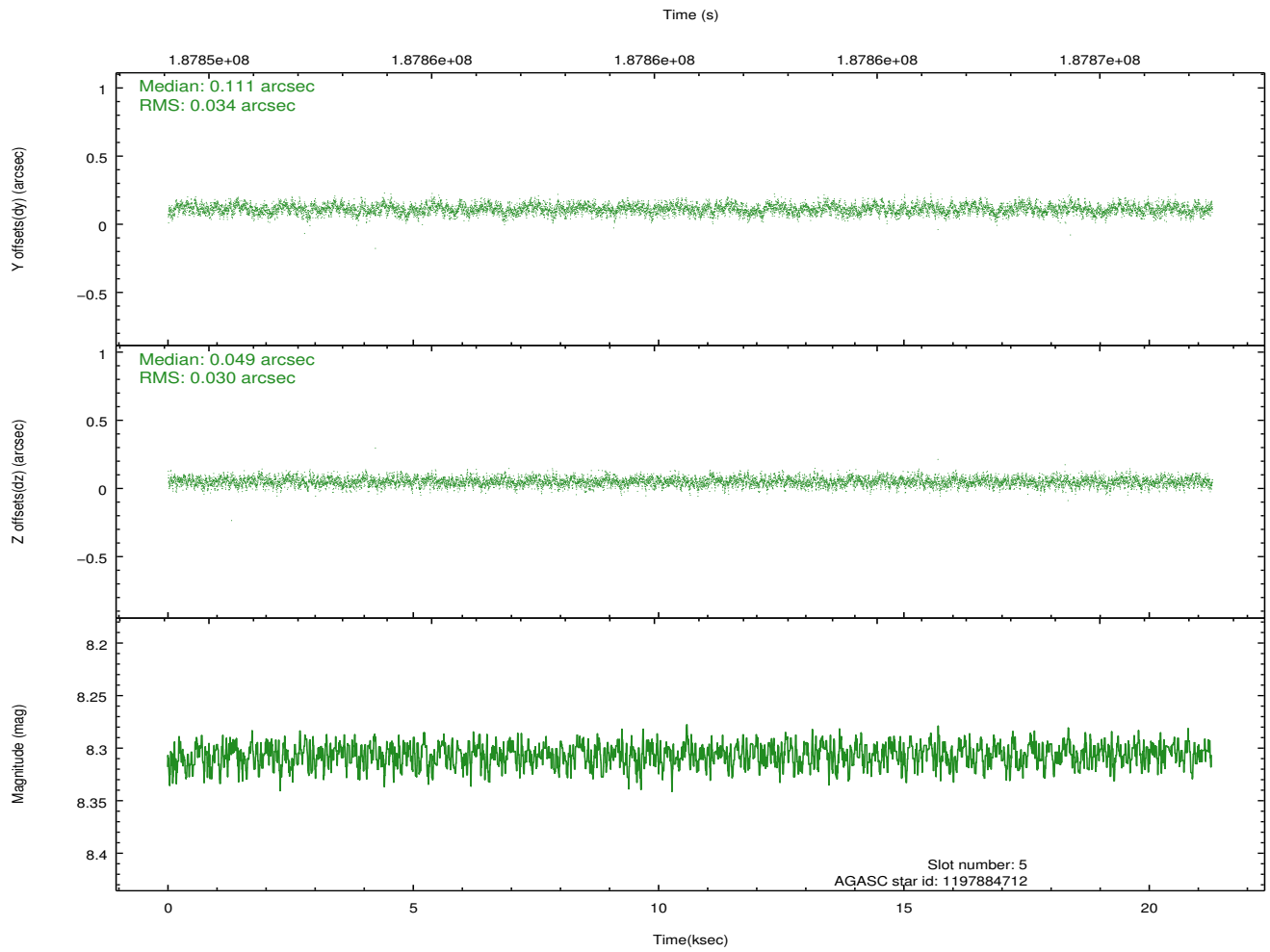
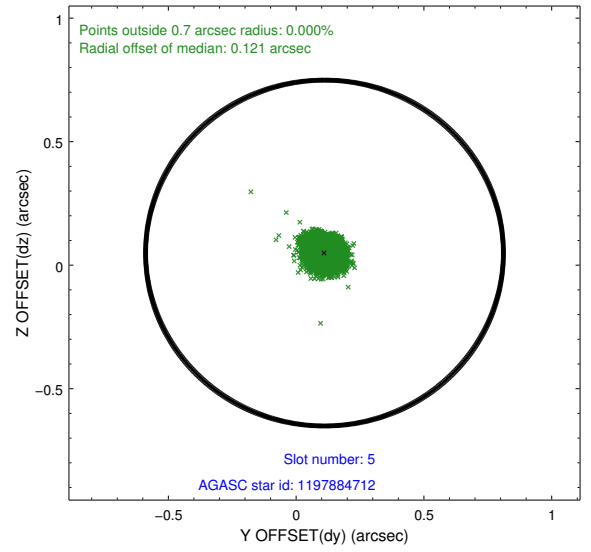
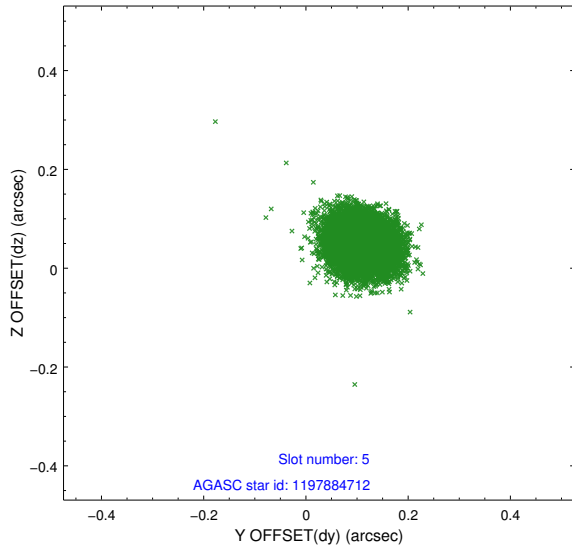
2.4.1 Slot 3



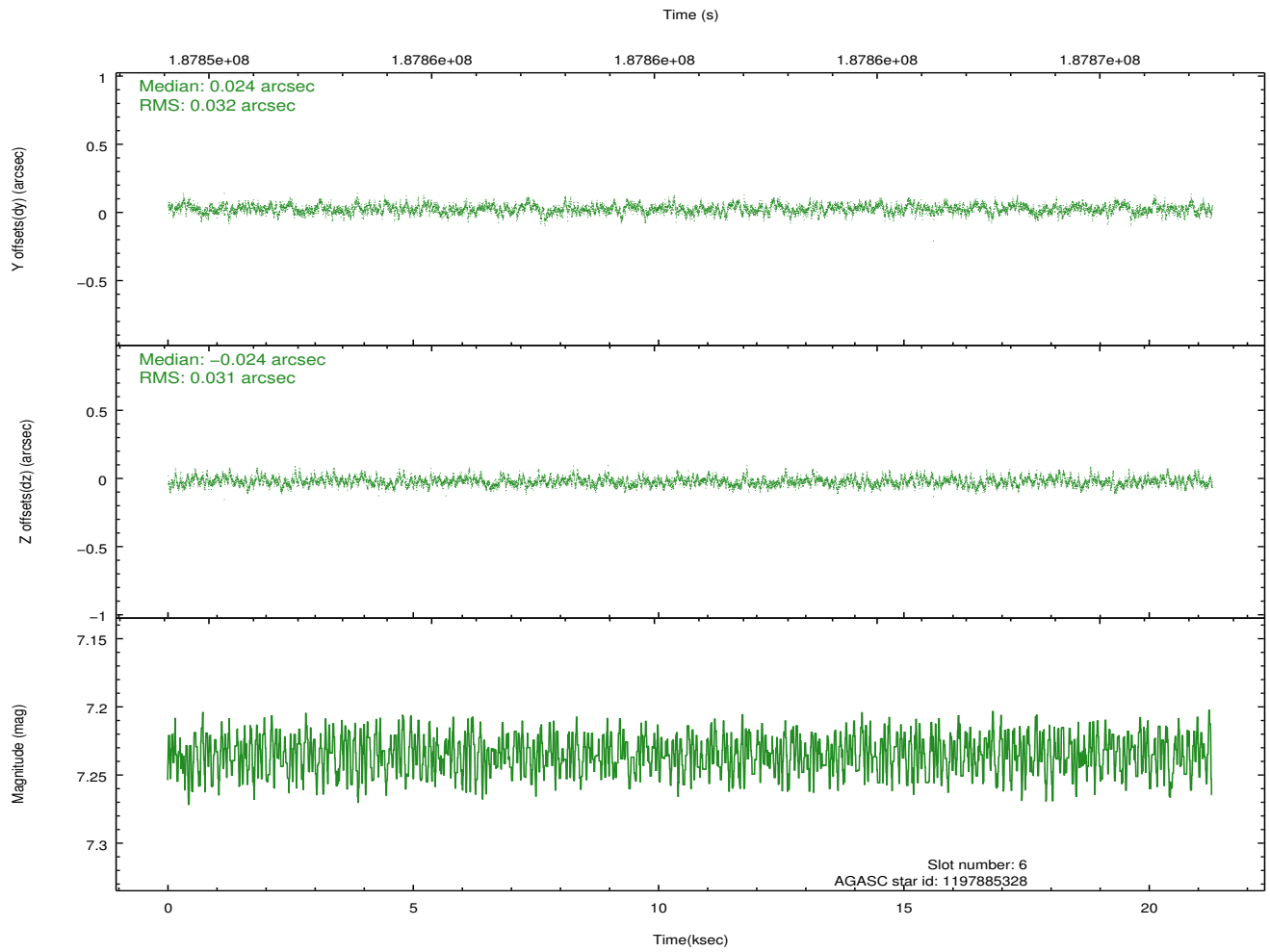
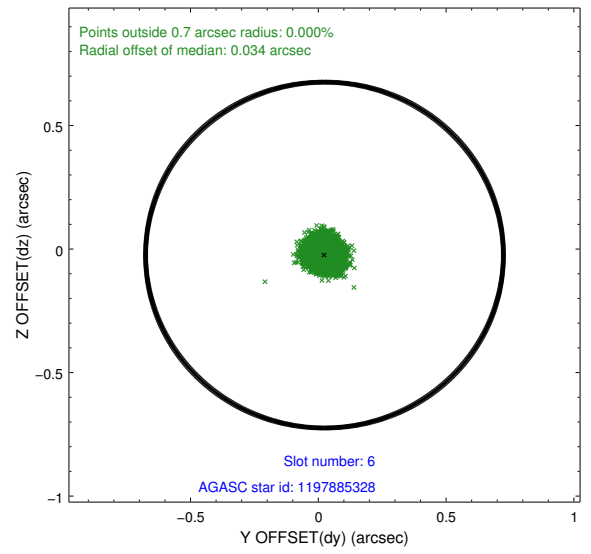
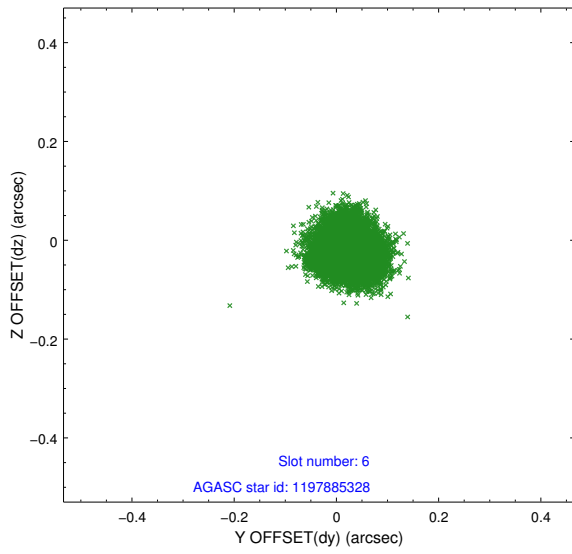
2.4.2 Slot 4



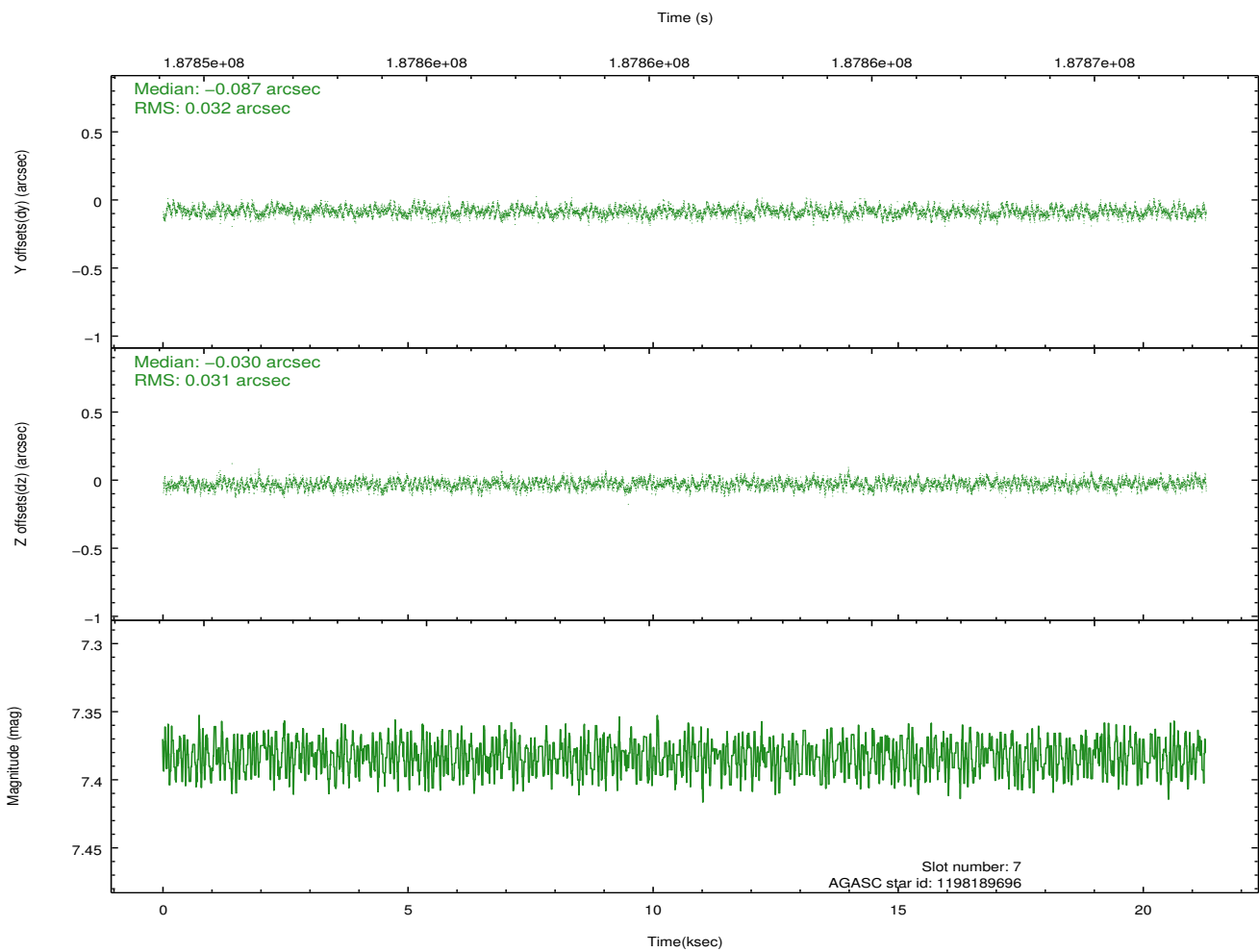
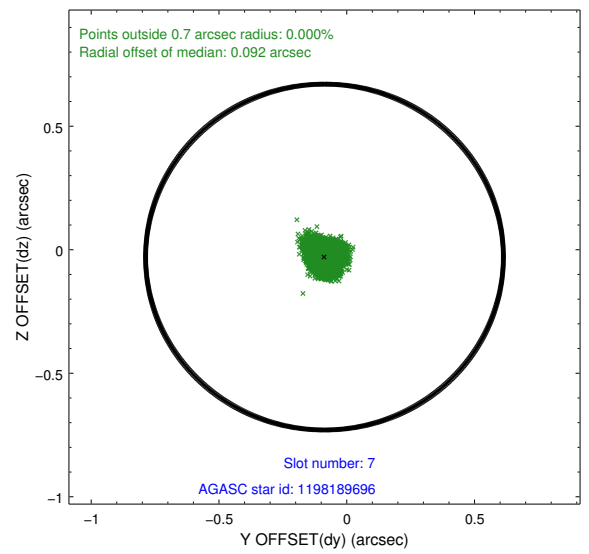
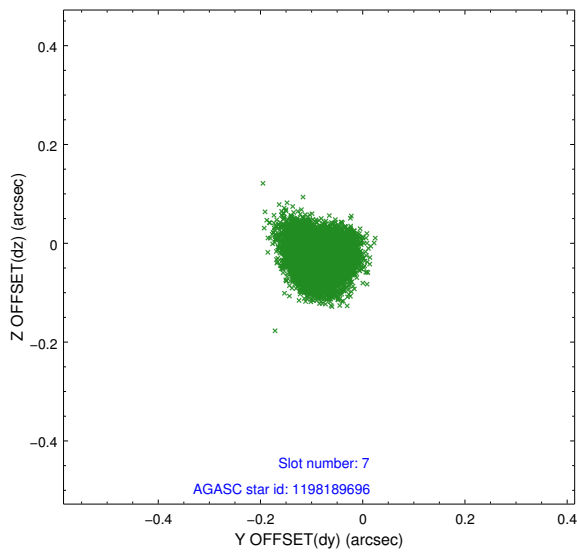
2.4.3 Slot 5



2.4.4 Slot 6

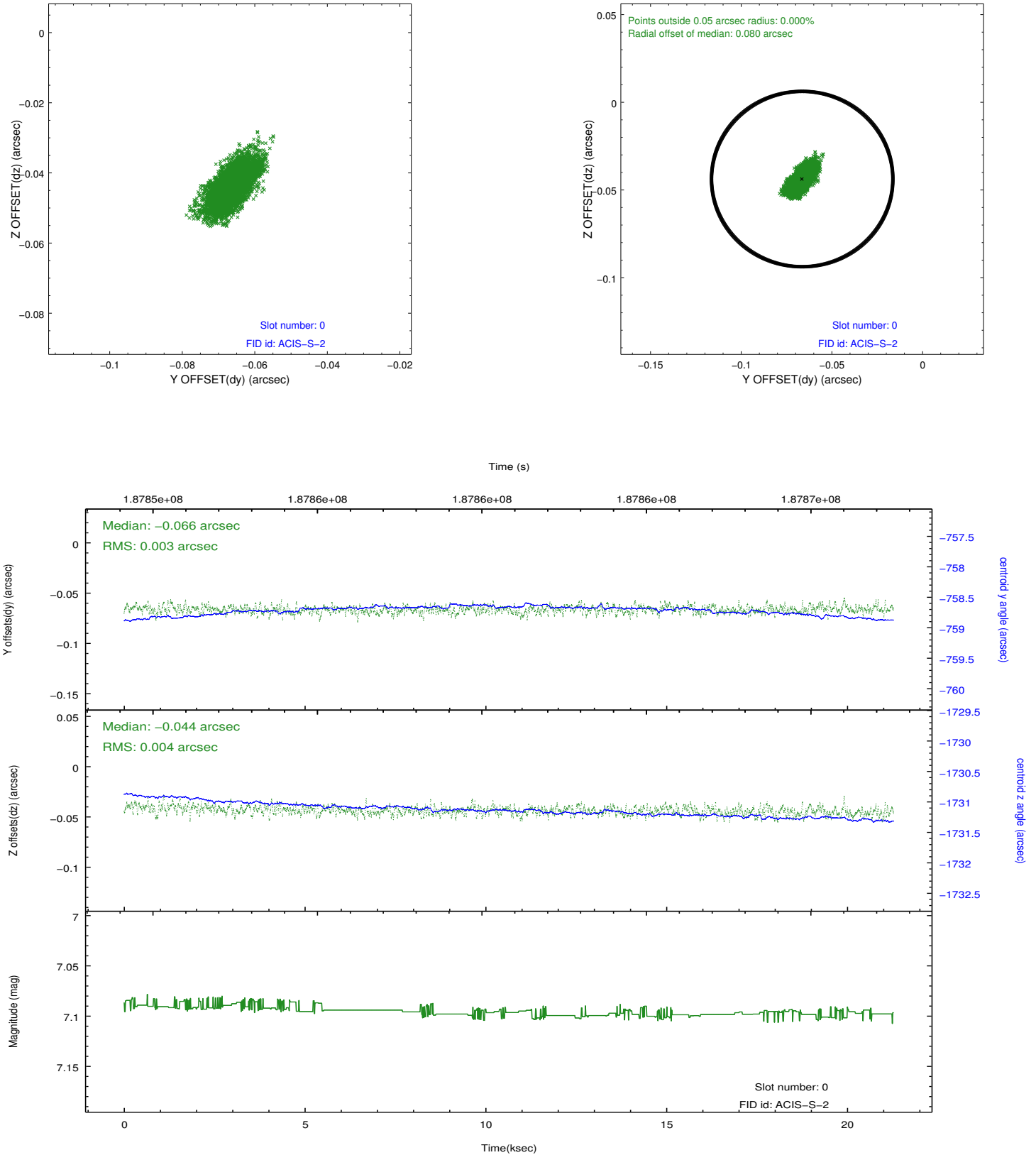


2.4.5 Slot 7

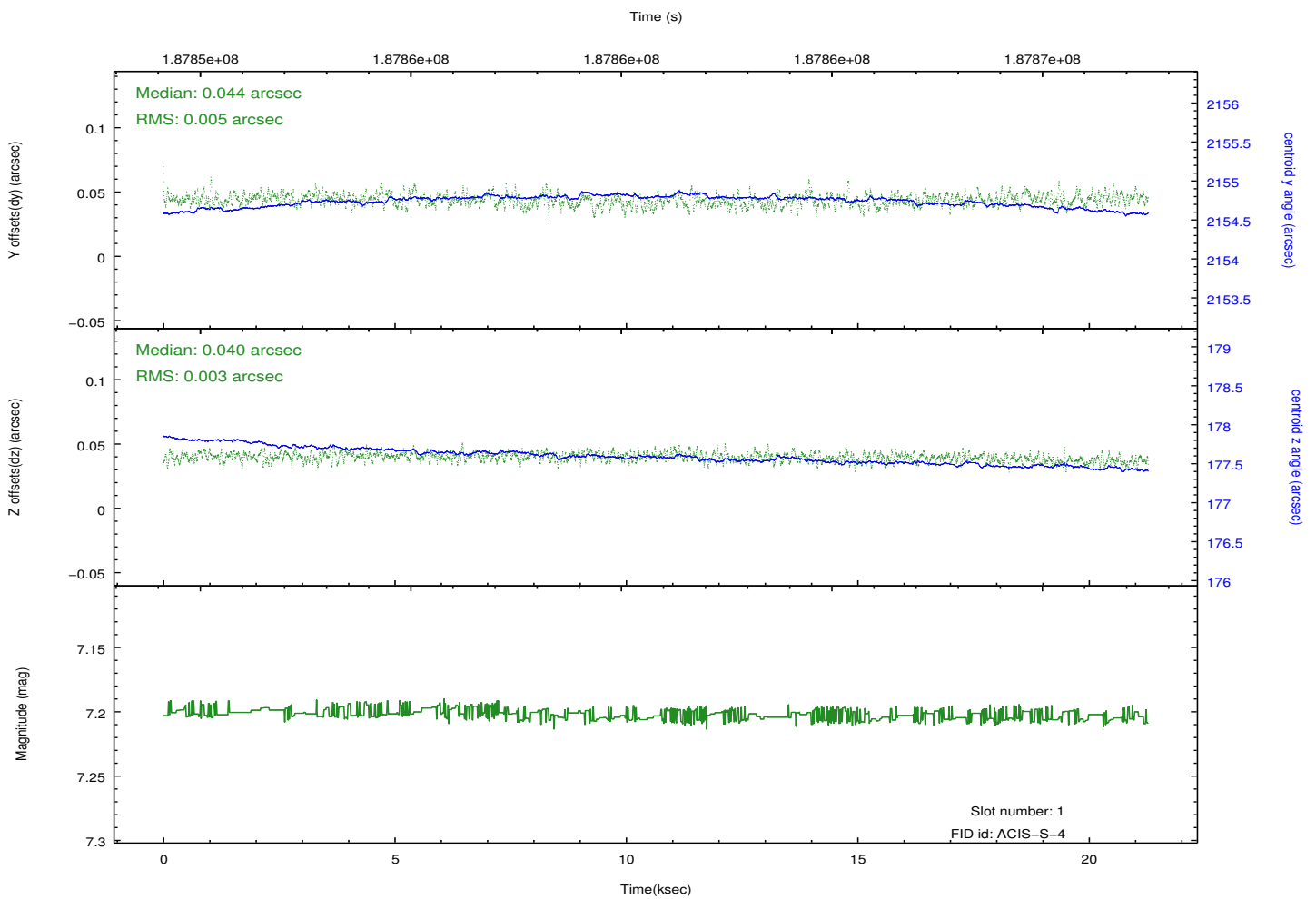
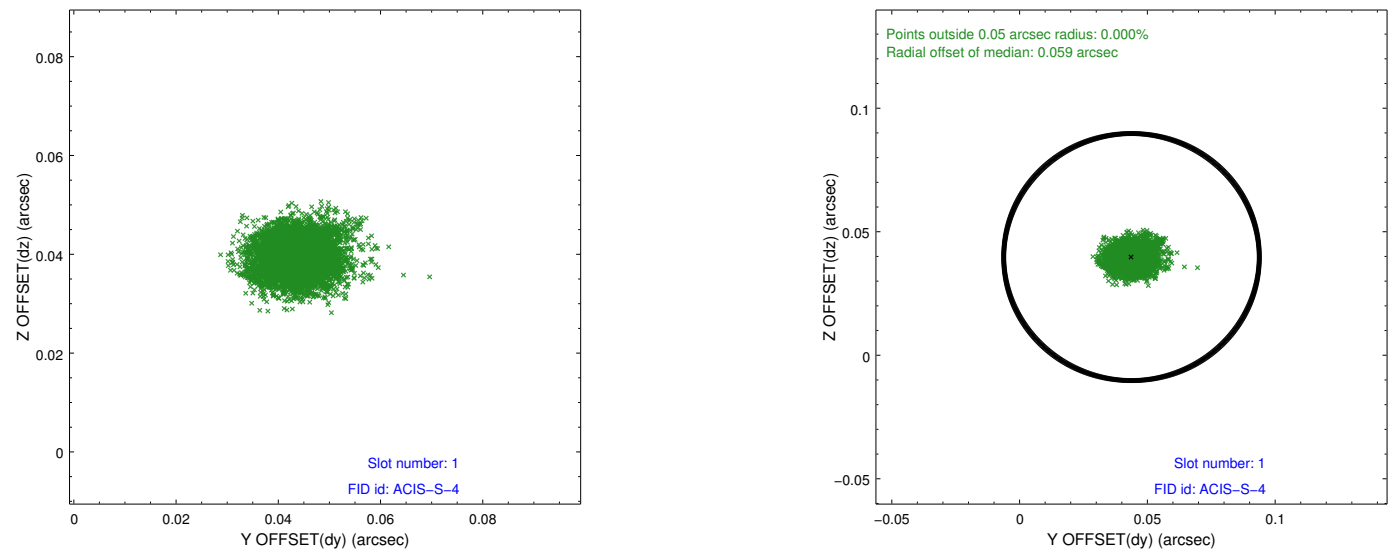


2.5 FID Slots

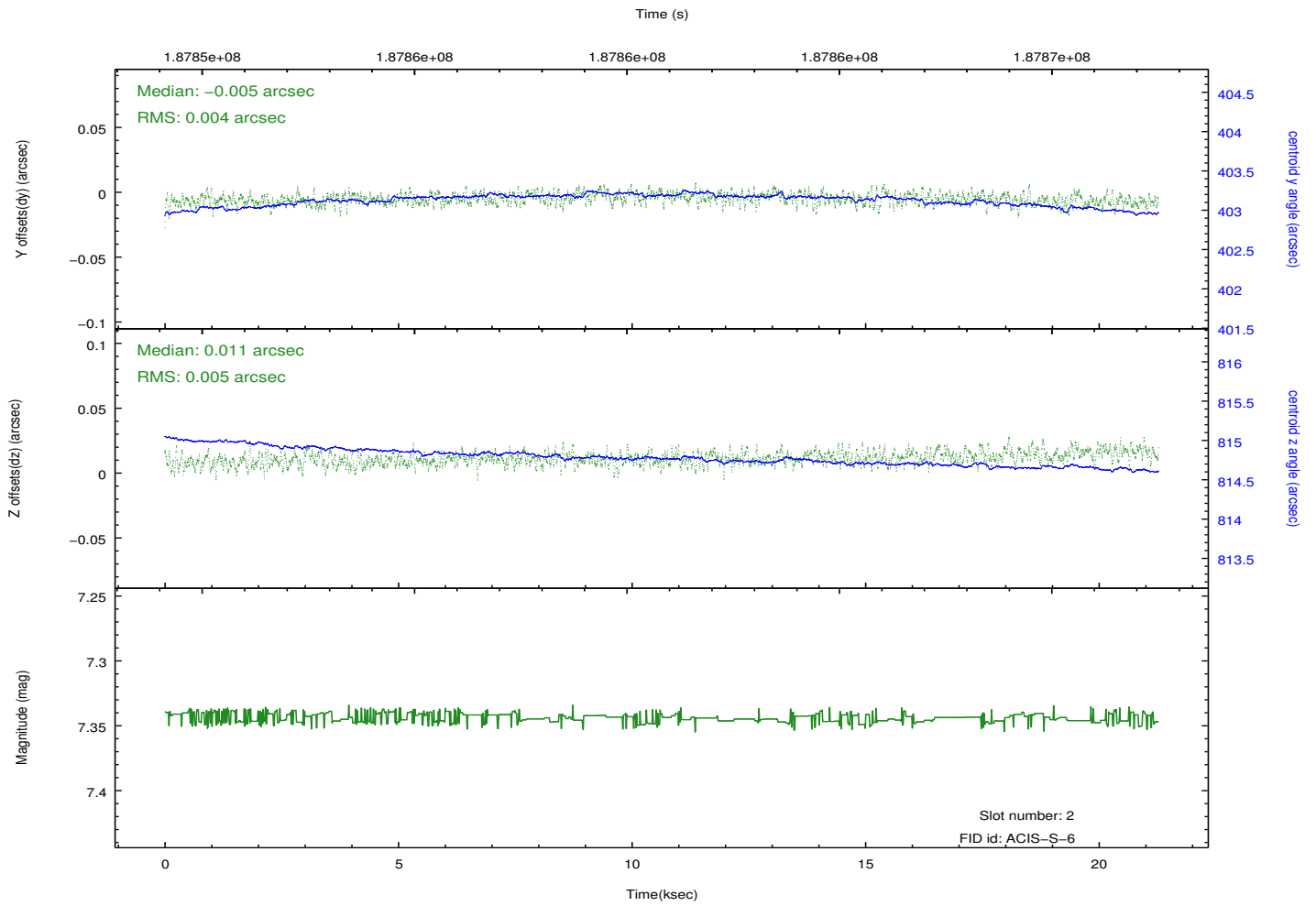
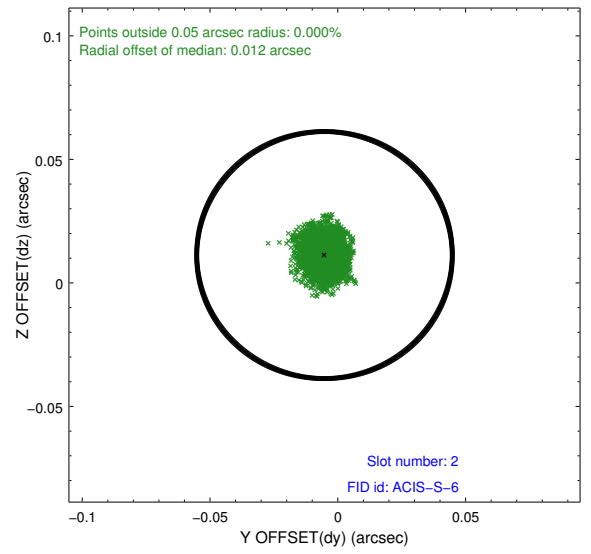
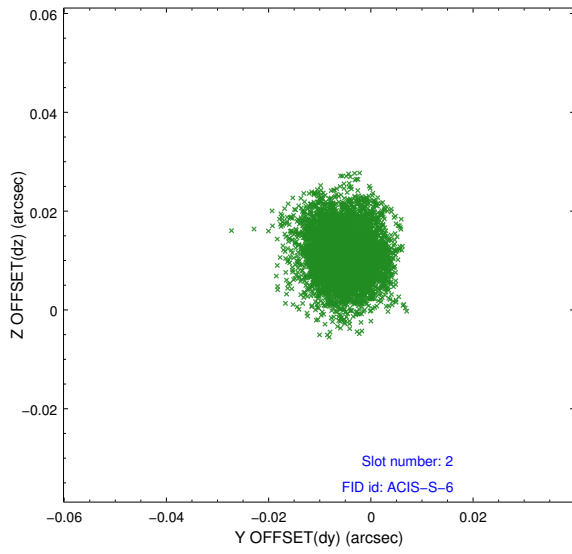
2.5.1 Slot 0



2.5.2 Slot 1



2.5.3 Slot 2



A Summary

A.1 Status

V&V Scientist	Jen Lauer
V&V Date (YYYY-MM-DD)	2012.12.03
V&V Edition	1
V&V Disposition and Status	OK
V&V Charge Time	20.585

A.2 Comments

Window constraint met.