

V&V Reference Report

L2 ASCDS Version : 8.4.5

Observation 533 - L2 Version 3
Chandra X-Ray Center

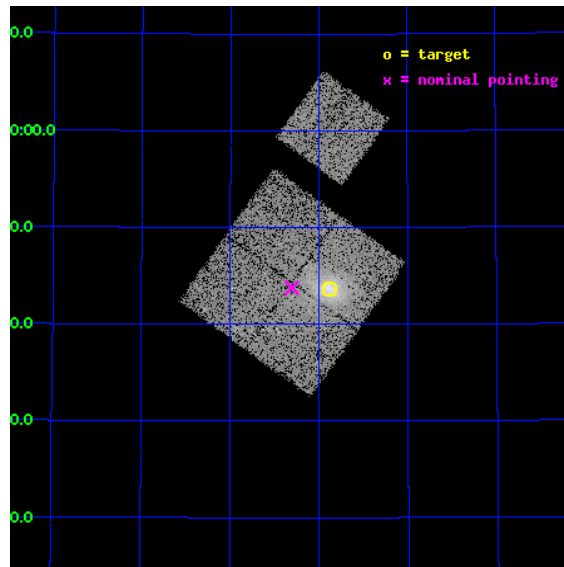
L2 Processing Date : Sep 1 2012

Contents

1	Front	2
2	OBI	3
2.1	OBI	3
2.1.1	Images	3
2.1.2	Bias	3
2.1.3	Parameters	4
2.1.4	Events	4
2.2	Compared Parameters	5
2.3	Aspect	6
2.4	Star Slots	9
2.4.1	Slot 3	9
2.4.2	Slot 4	10
2.4.3	Slot 5	11
2.4.4	Slot 6	12
2.4.5	Slot 7	13
2.5	FID Slots	14
2.5.1	Slot 0	14
2.5.2	Slot 1	15
2.5.3	Slot 2	16
A	Summary	17
A.1	Status	17
A.2	Comments	17

1 Front

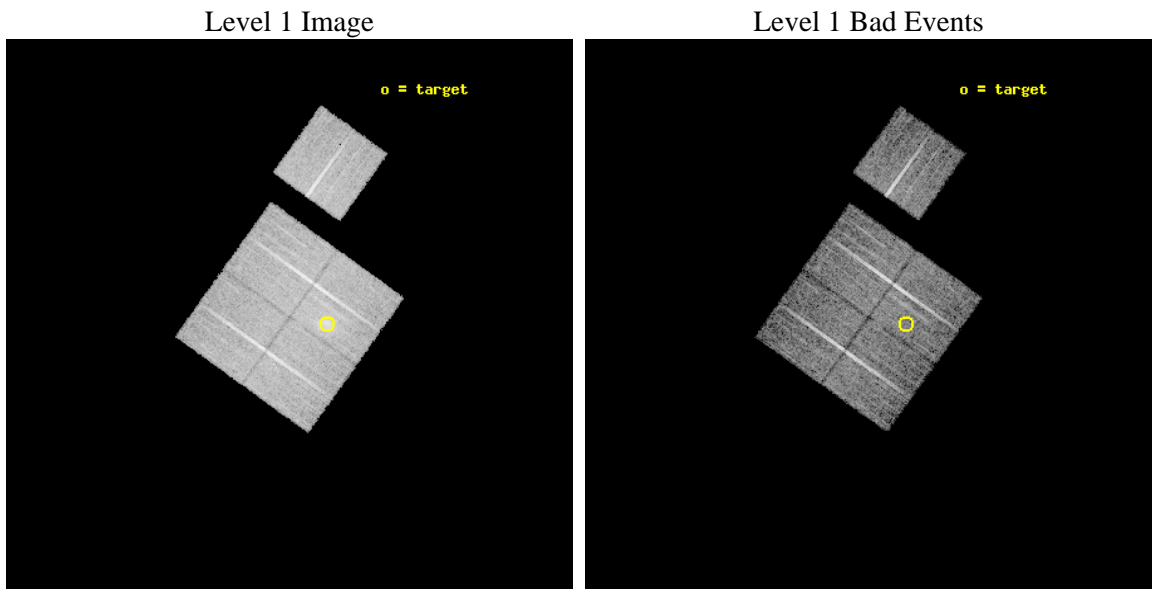
seq_num	800041	Sequence number
obs_id	533	Observation id
title	DETERMINATION OF H0/Q0	Proposal title
observer	DR. LEON VANSPEYBROECK	Principal investigator
object	A773	Source name
dtcycle	0	
cycle	P	events from which exps? Prim/Second/Both
ra_targ	139.471683	Observer's specified target RA [deg]
dec_targ	51.726597	Observer's specified target Dec [deg]
ra_nom	139.5762883251	Nominal RA [deg]
dec_nom	51.729528376901	Nominal Dec [deg]
roll_nom	35.671875985018	Nominal Roll [deg]
revision	3	Processing version of data
ontime	11401.600010604	Sum of GTIs [s]
livetime	11257.22608605	Livetime [s]
ontime0	11401.600010604	Sum of GTIs [s]
ontime1	11401.600010604	Sum of GTIs [s]
ontime2	11401.600010604	Sum of GTIs [s]
ontime3	11401.600010604	Sum of GTIs [s]
ontime6	11401.600010604	Sum of GTIs [s]
l2events	45430	Number of level 2 events



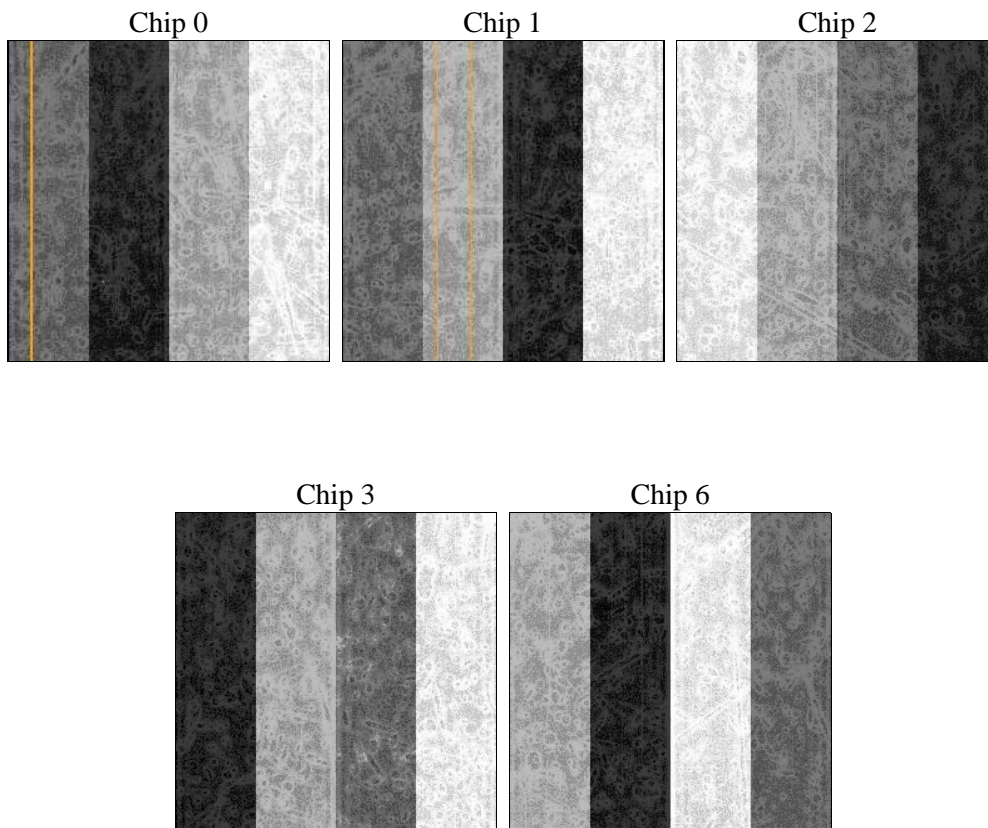
2 OBI

2.1 OBI

2.1.1 Images



2.1.2 Bias



2.1.3 Parameters

obi_num	0	Obi number	sched_exp_time	11244.154000	[s] Scheduled observation exposure time
ascdsver	8.4.5	Processing system revision	ontime	11401.600010604	Sum of GTIs [s]
caldbver	4.5.1.1	 	ontime0	11401.600010604	Sum of GTIs [s]
date	2012-09-01T15:05:40	Date and time of file creation	ontime1	11401.600010604	Sum of GTIs [s]
revision	3	Processing version of data	ontime2	11401.600010604	Sum of GTIs [s]
			ontime3	11401.600010604	Sum of GTIs [s]
			ontime6	11401.600010604	Sum of GTIs [s]
			l1events	348609	Number of level 1 events

2.1.4 Events

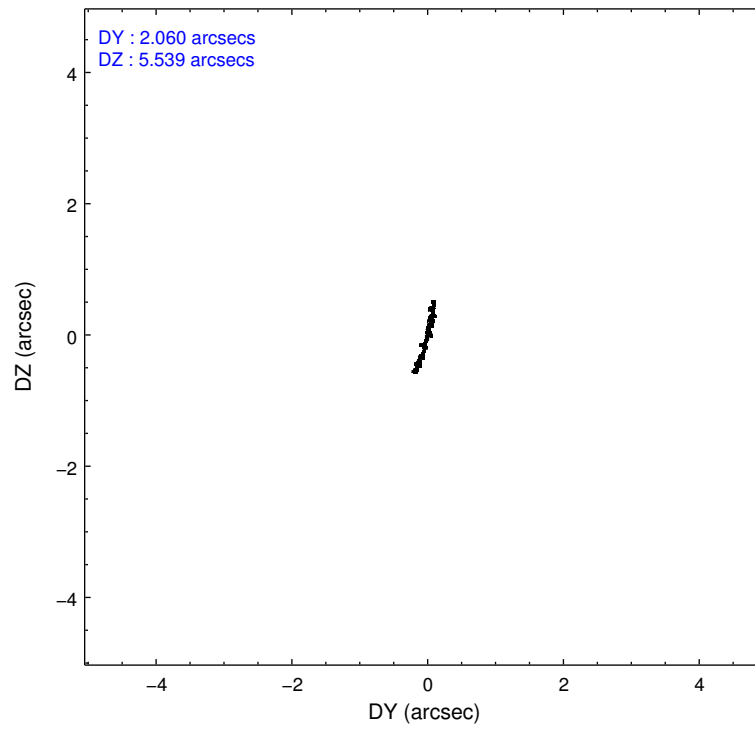
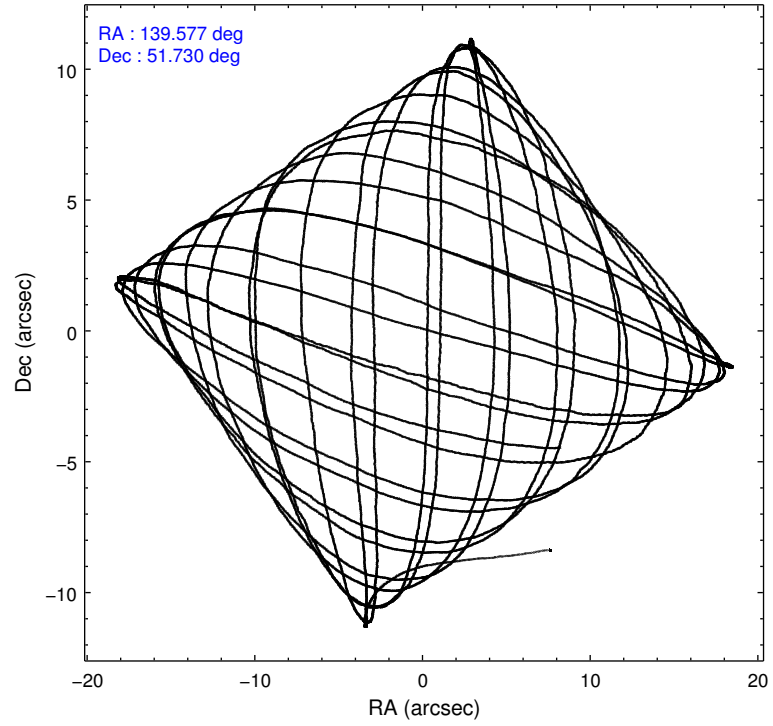
	ccd 0	ccd 1	ccd 2	ccd 3	ccd 6
level 1 events	63489	67728	71492	78321	67579
rejected events	54817	57713	63362	61429	59584
rejected %	86%	85%	88%	78%	88%

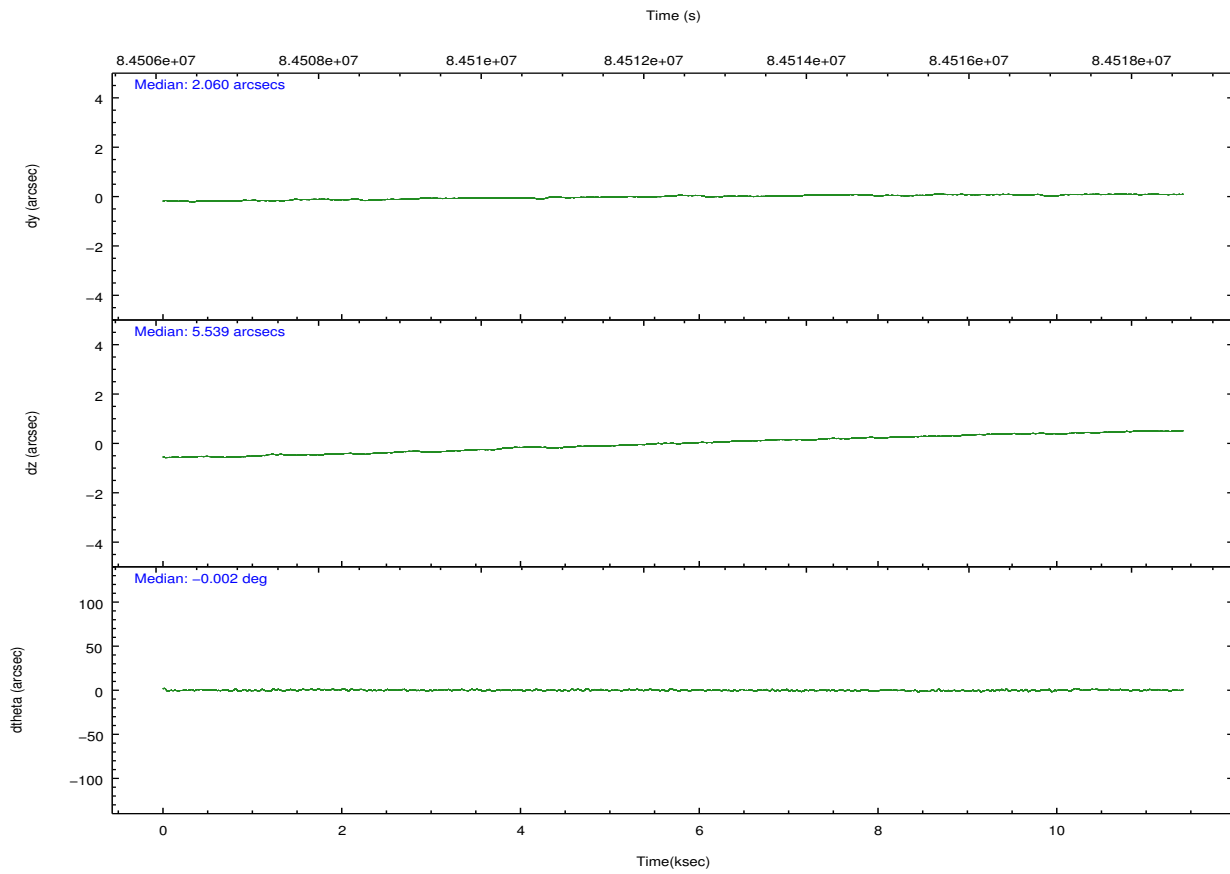
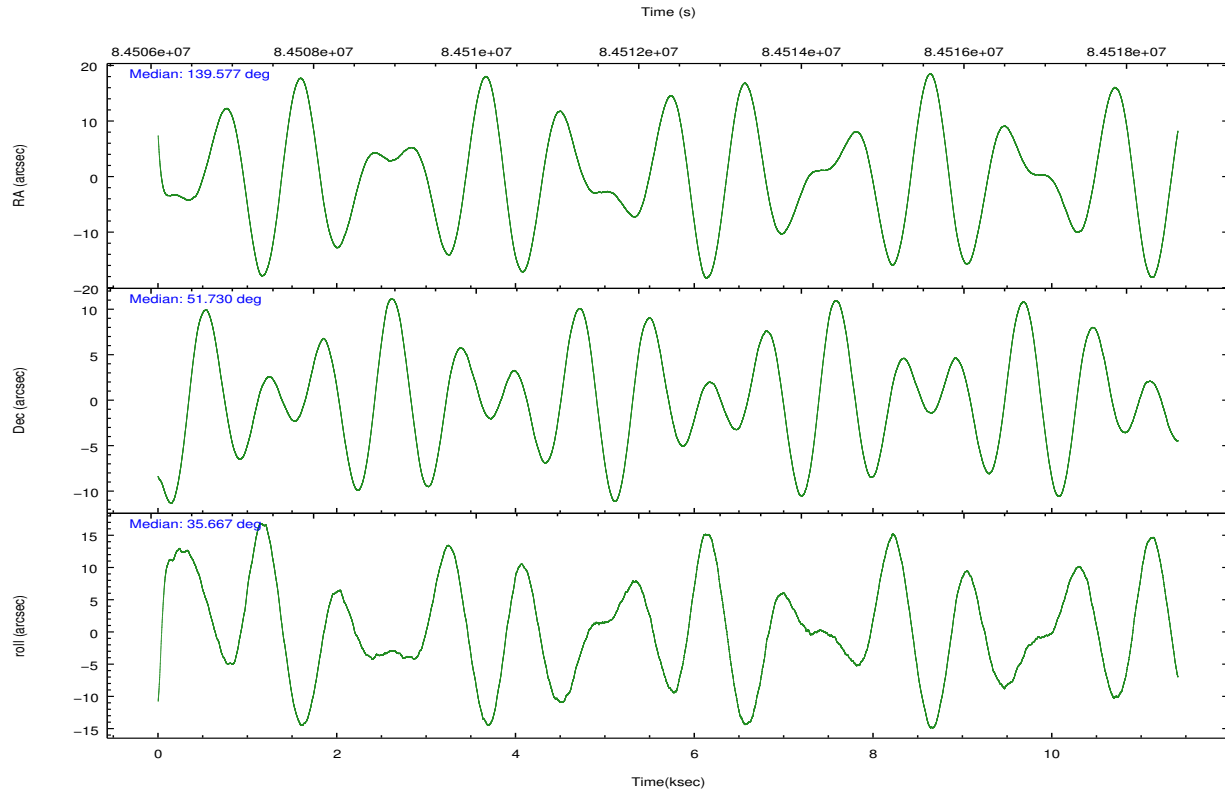
	ccd 0	ccd 1	ccd 2	ccd 3	ccd 6
grade 0 events	3918	4746	3692	10803	3455
	6%	7%	5%	13%	5%
grade 1 events	20	30	36	55	24
	0%	0%	0%	0%	0%
grade 2 events	1786	1953	1728	2498	1576
	2%	2%	2%	3%	2%
grade 3 events	846	911	768	980	758
	1%	1%	1%	1%	1%
grade 4 events	808	878	683	1096	750
	1%	1%	0%	1%	1%
grade 5 events	2365	2537	2171	2574	2623
	3%	3%	3%	3%	3%
grade 6 events	1380	1576	1309	1611	1515
	2%	2%	1%	2%	2%
grade 7 events	52366	55097	61105	58704	56878
	82%	81%	85%	74%	84%

2.2 Compared Parameters

Parameter	Planned	Actual	Parameter	Planned	Actual
Instrument	ACIS	ACIS	Obspar format version number	7	7
Detector	ACIS-01236	ACIS-01236	Obspar file type	PREDICTED	ACTUAL
Grating	NONE	NONE	Obspar update status	NONE	UPDATED
Data mode	VFAINT	VFAINT	Number of optional ACIS chips dropped	0	0
Observation mode	POINTING	POINTING	On-chip summing requested	N	N
[deg] Pointing RA	139.557921	139.5762883251016	Subarray requested	NONE	NONE
[deg] Pointing Dec	51.704525	51.72952837690053	Alternating exposures requested	N	N
[deg] Pointing Roll	35.477618	35.67187598501778	[s] Primary exposure time	0.000000	3.2
[mm] SIM focus pos	-0.782348	-0.7809083437167272			
[mm] SIM defocus	0	0.001439871863259334			
[mm] SIM translation stage pos	-236.532463	-236.5241547330508			
[mm] SIM translation stage offset	2.94	2.931701730121091			
[s] Observation start time (MET)	84506823.184000	84505802.452323			
Observation start date	2000-09-05T02:05:59	2000-09-05T01:50:02			
[s] Observation end time (MET)	84518067.184000	84518381.765295			
Observation end date	2000-09-05T05:13:23	2000-09-05T05:19:41			
Read mode	TIMED	TIMED			

2.3 Aspect



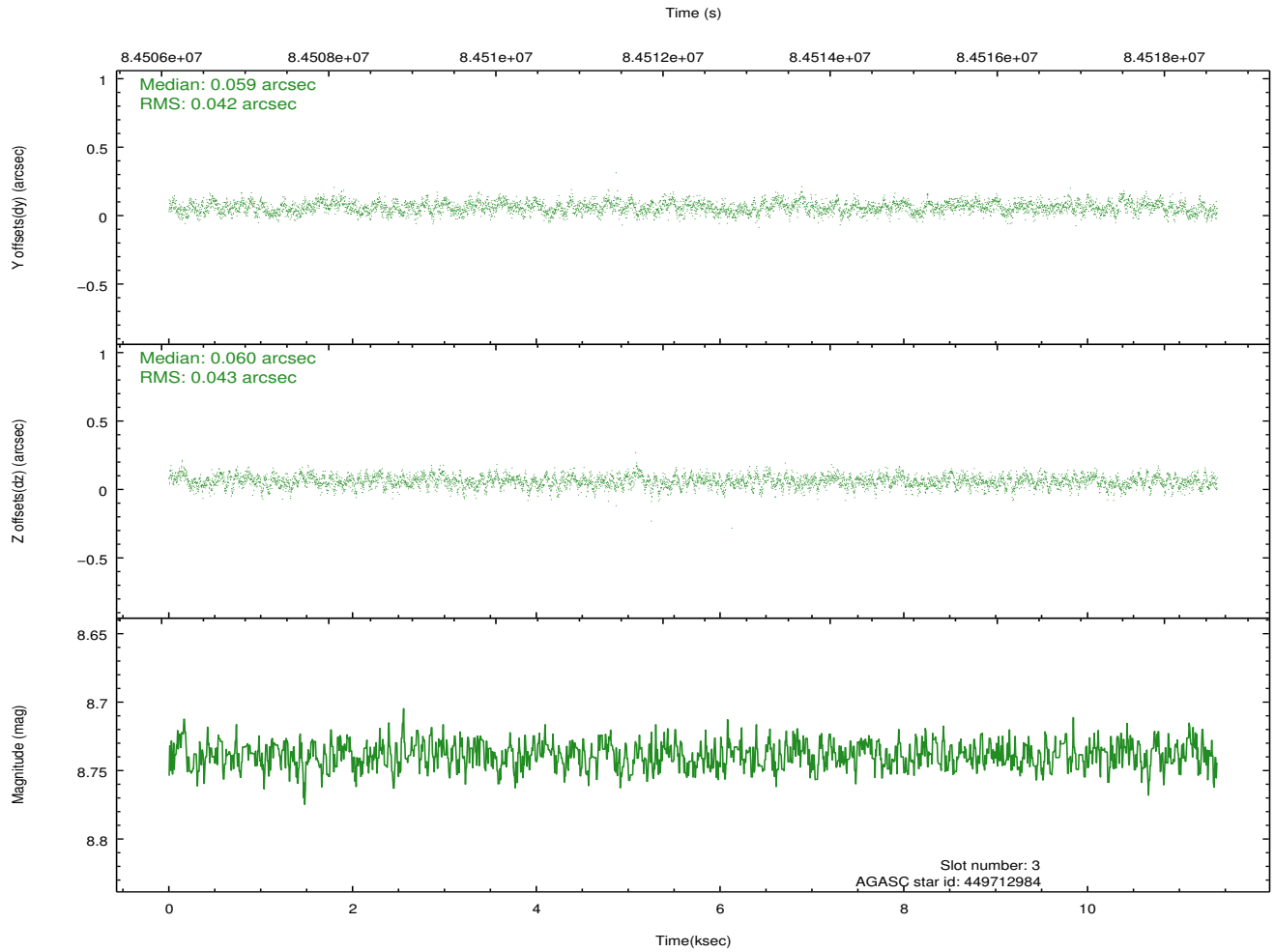
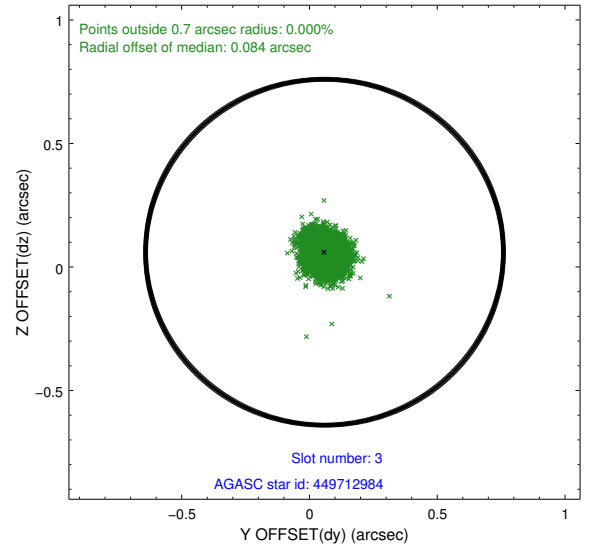
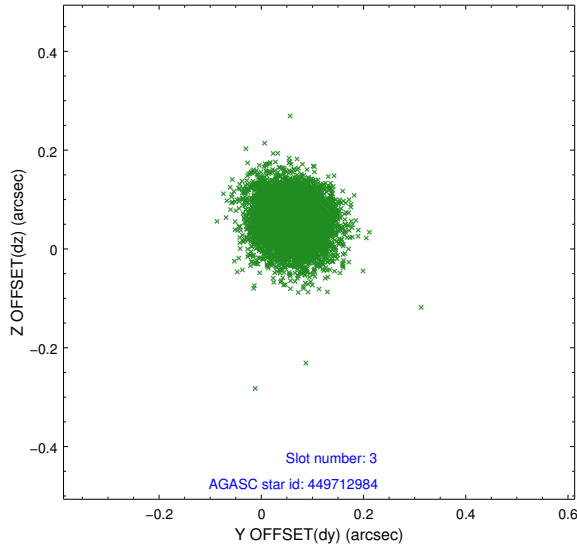


Slot Statistics

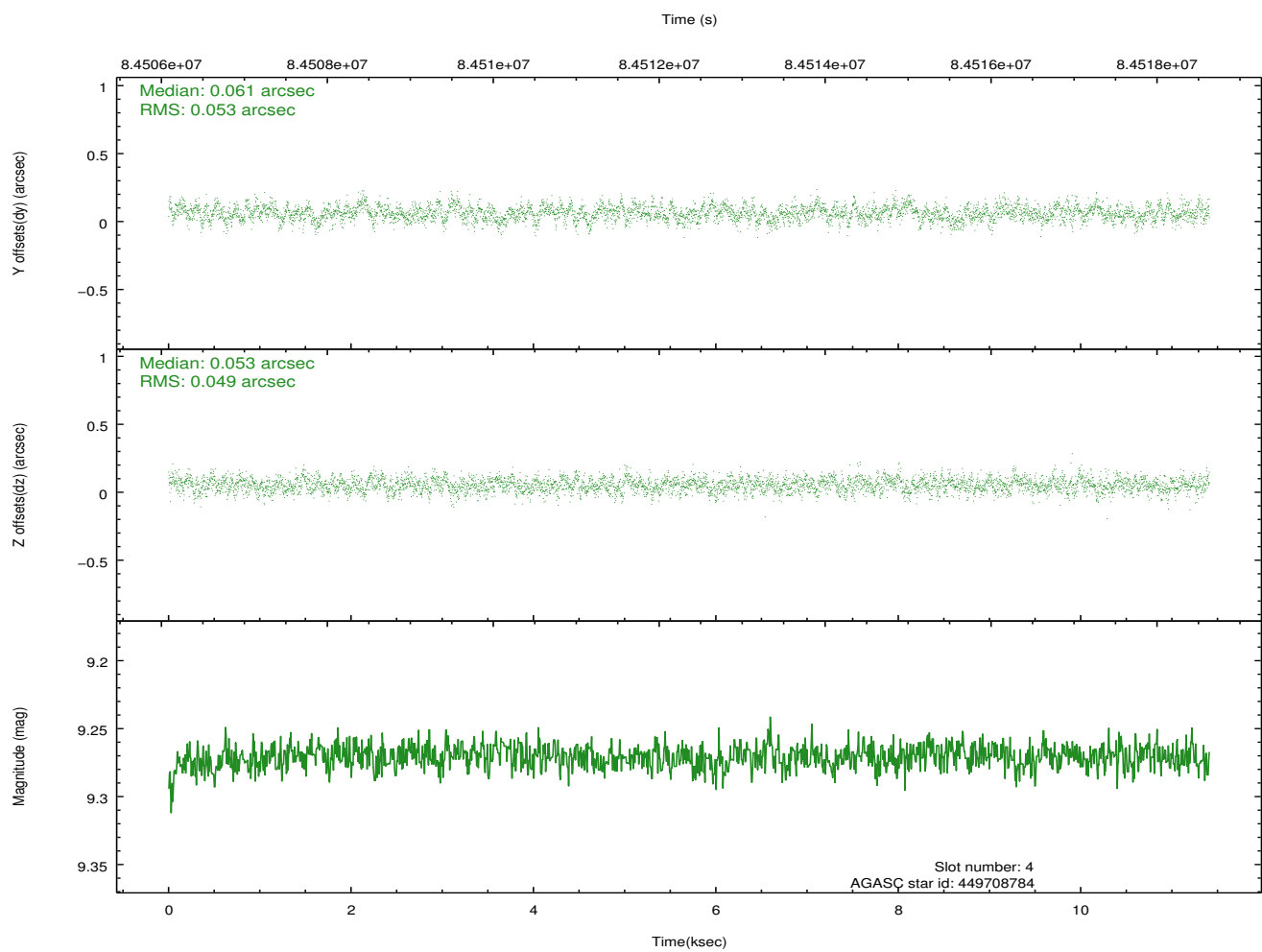
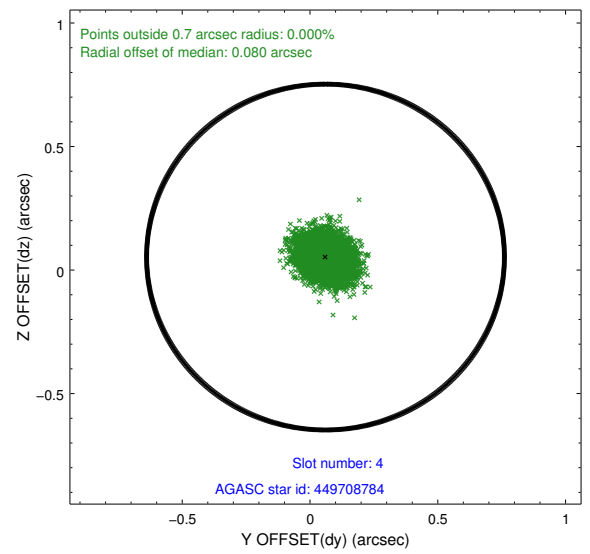
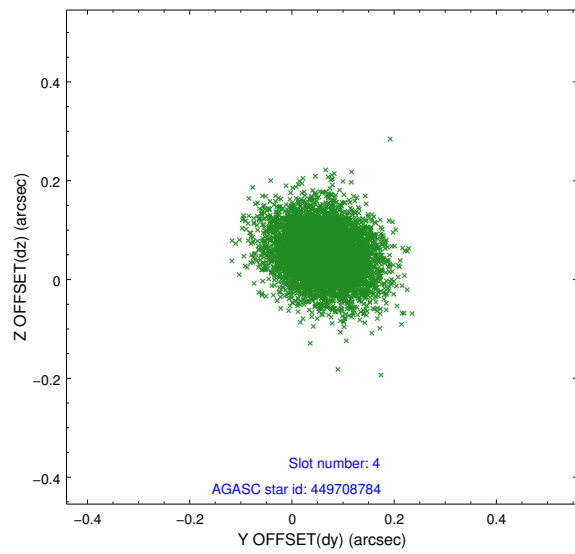
slot	status	id	mag	n_pts	med_dy	med_dz	dr1	dr2	ra	dec	mean_y	mean_z
0	FID	ACIS-I-2	7.15	2783	-0.012	-0.028	0.009	0.016	0.000000	0.000000	-756.20	-775.33
1	FID	ACIS-I-4	7.20	2783	-0.012	0.024	0.007	0.012	0.000000	0.000000	2157.68	1130.71
2	FID	ACIS-I-5	7.23	2783	-0.078	0.073	0.009	0.015	0.000000	0.000000	-1809.67	1129.50
3	GUIDE	449712984	8.74	5566	0.059	0.060	0.063	0.103	139.803051	51.633381	297.24	-526.18
4	GUIDE	449708784	9.27	5562	0.061	0.053	0.077	0.123	139.281247	51.322176	-1305.75	-759.35
5	GUIDE	449708792	9.39	5566	-0.031	-0.117	0.087	0.144	139.724660	52.475322	1907.31	2047.23
6	GUIDE	449708464	9.51	5566	-0.058	0.106	0.082	0.132	140.342196	51.951871	1938.78	-277.11
7	GUIDE	449712088	9.52	5473	-0.027	-0.103	0.099	0.162	139.707087	51.979156	842.93	612.84

2.4 Star Slots

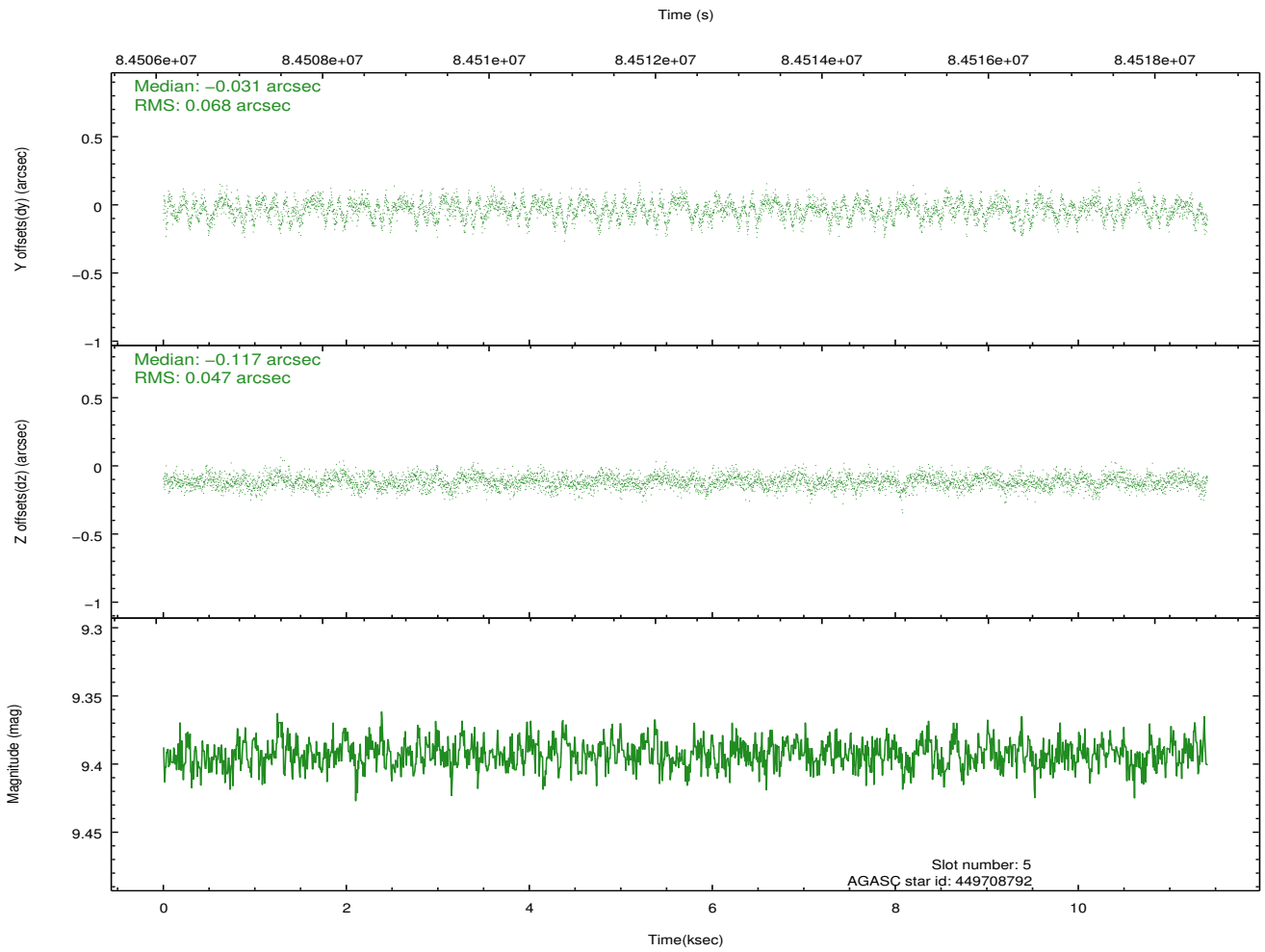
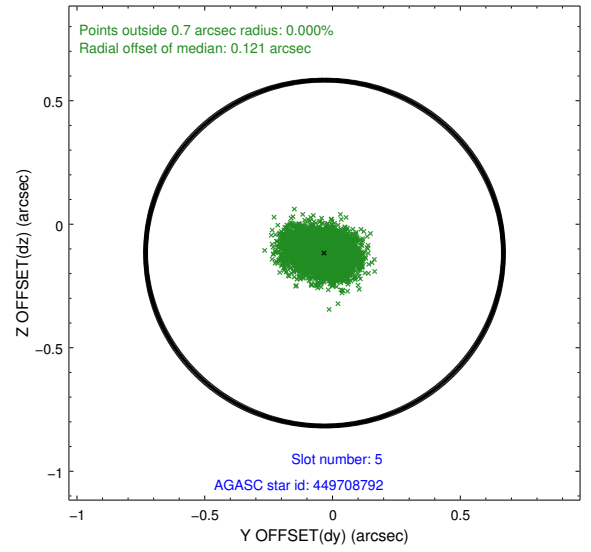
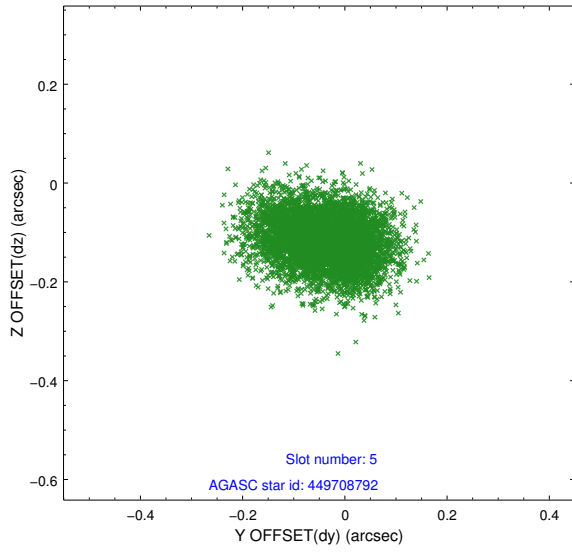
2.4.1 Slot 3



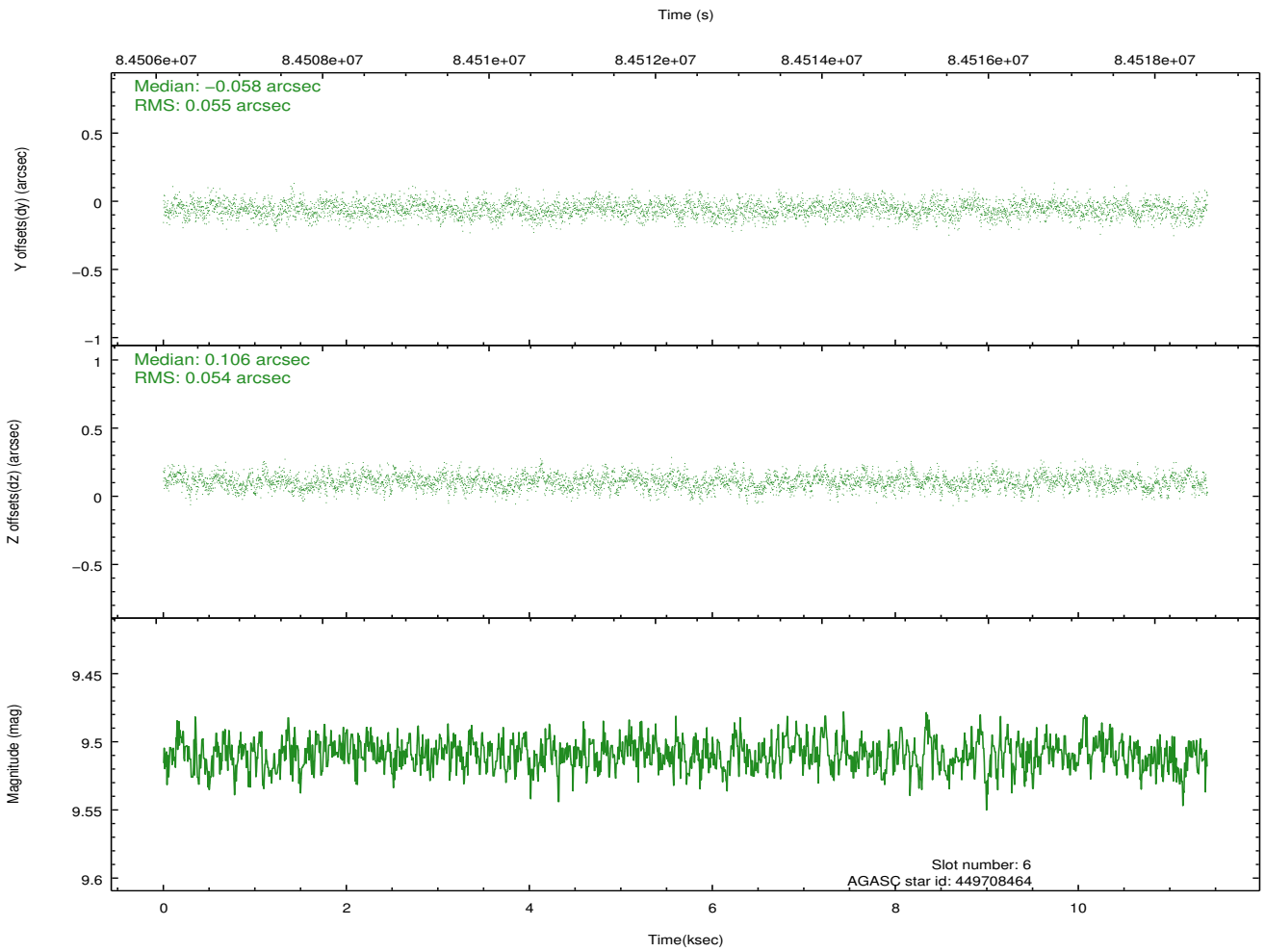
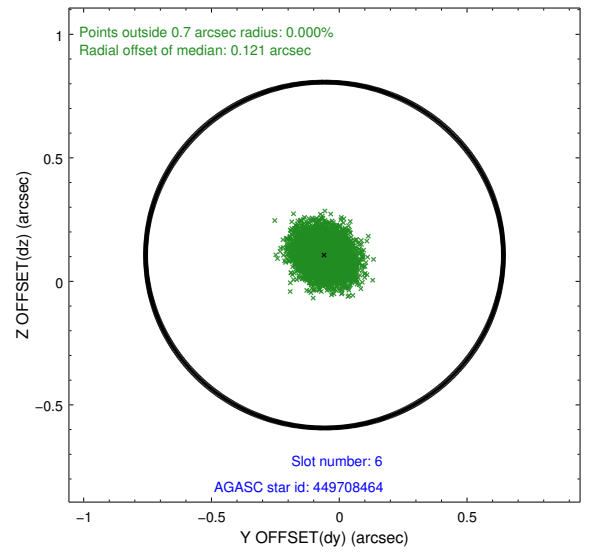
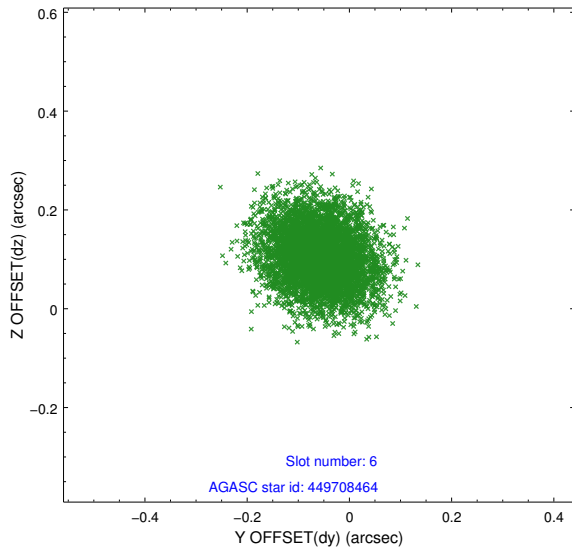
2.4.2 Slot 4



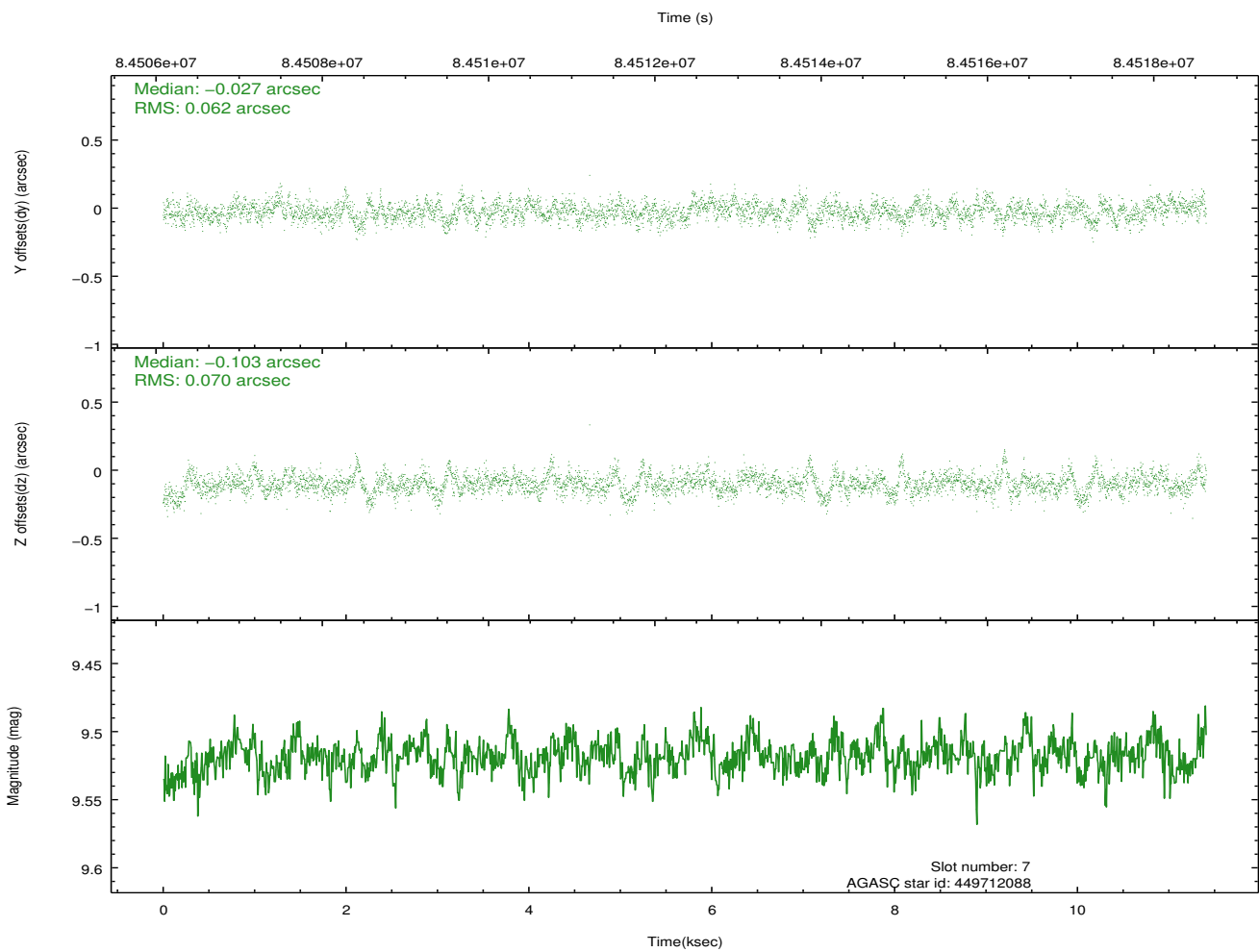
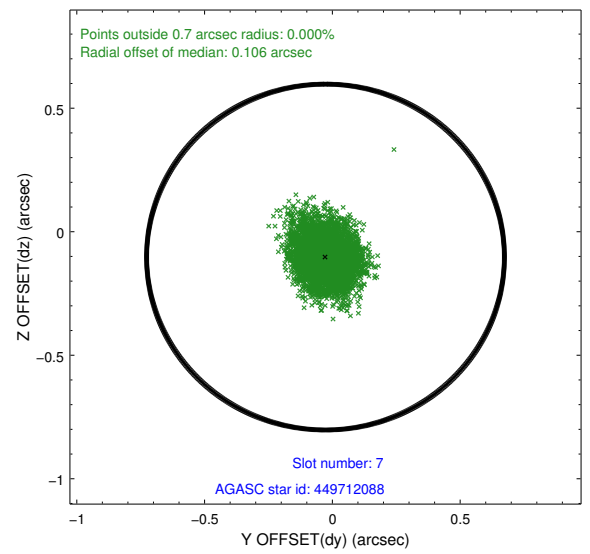
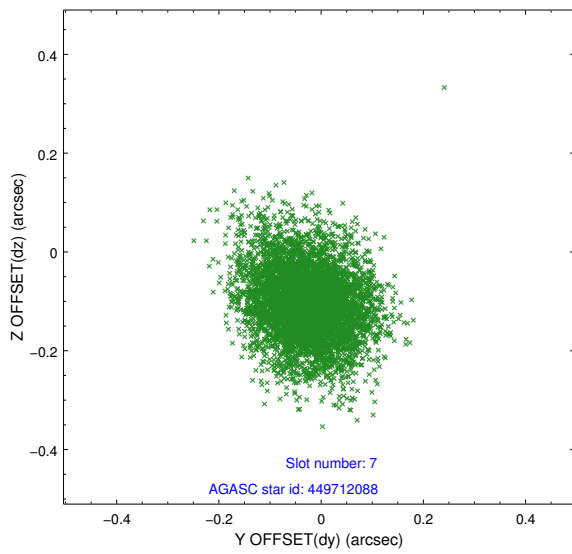
2.4.3 Slot 5



2.4.4 Slot 6

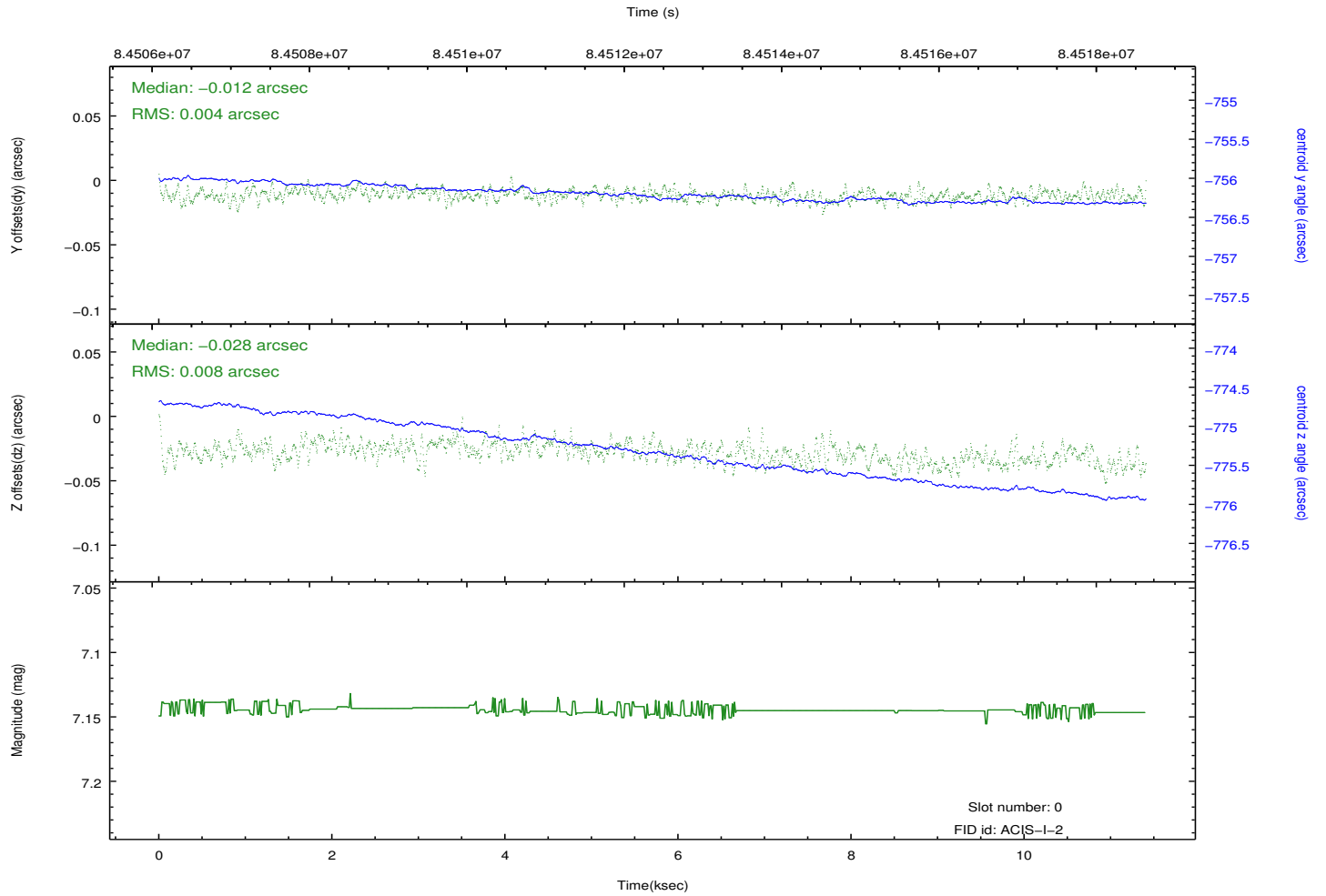
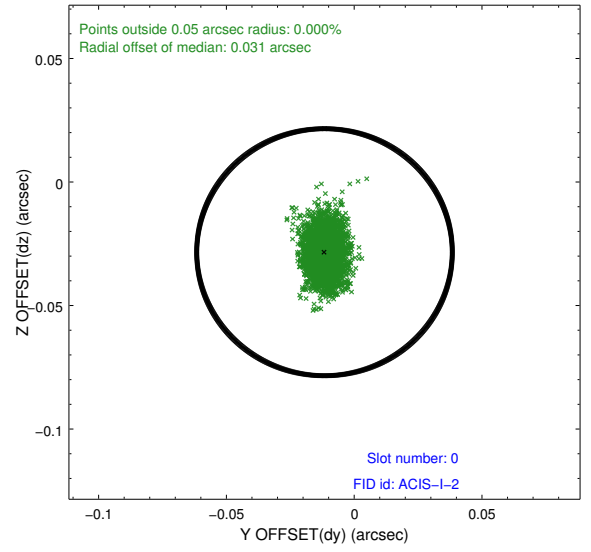
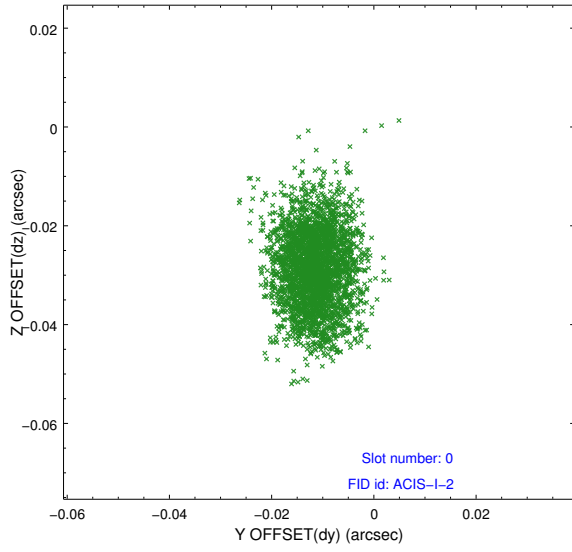


2.4.5 Slot 7

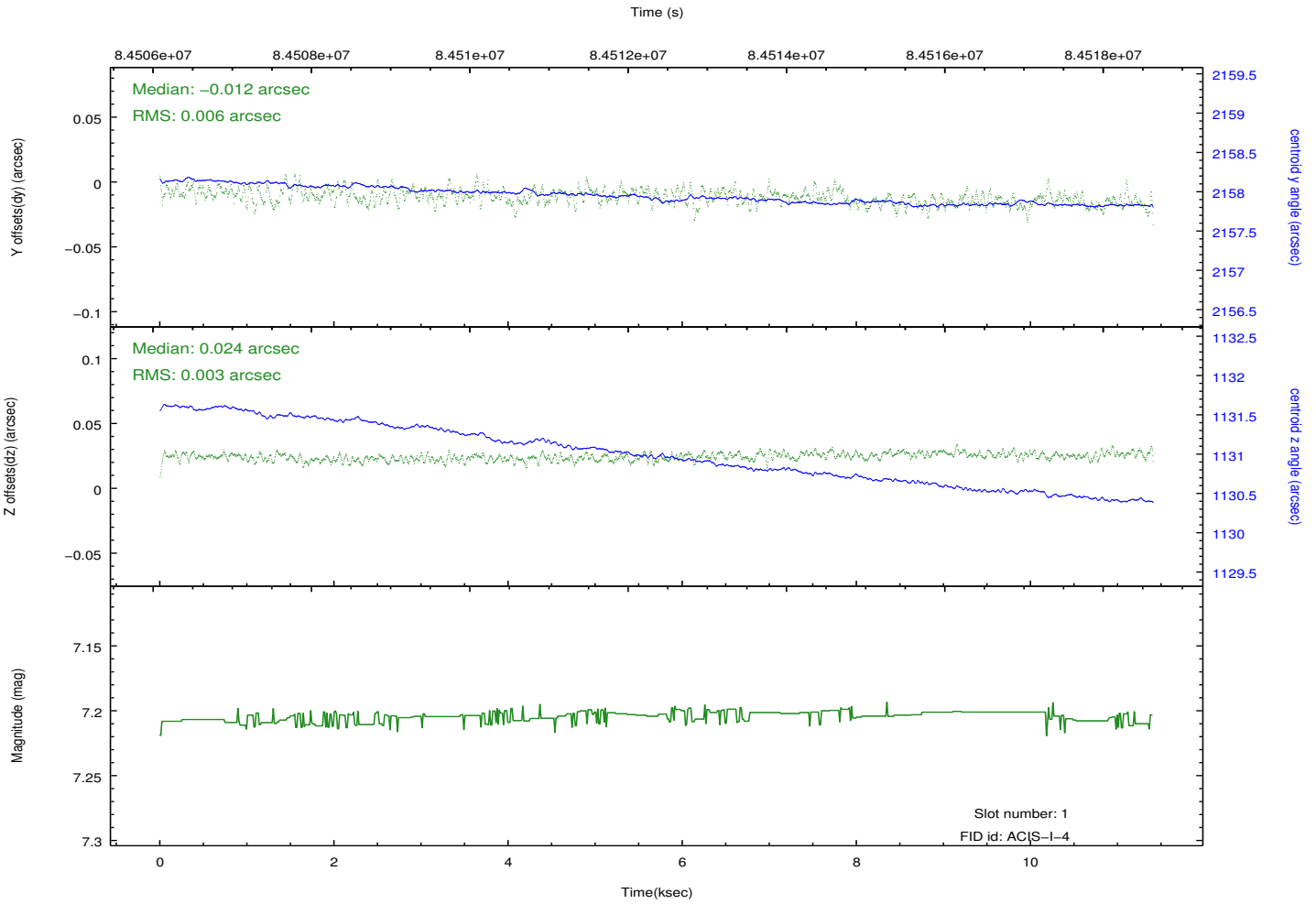
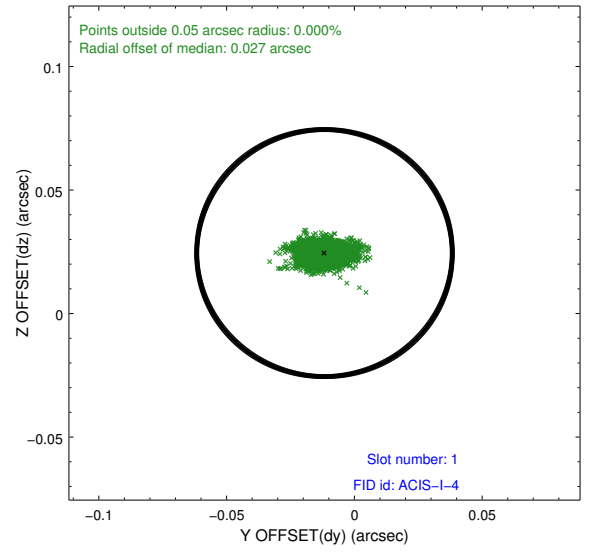
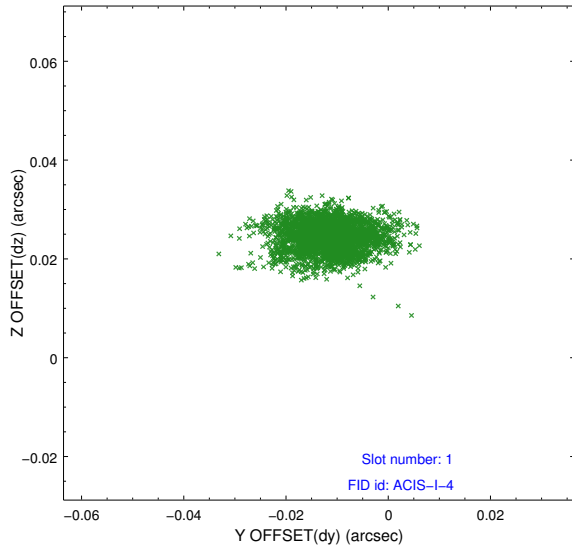


2.5 FID Slots

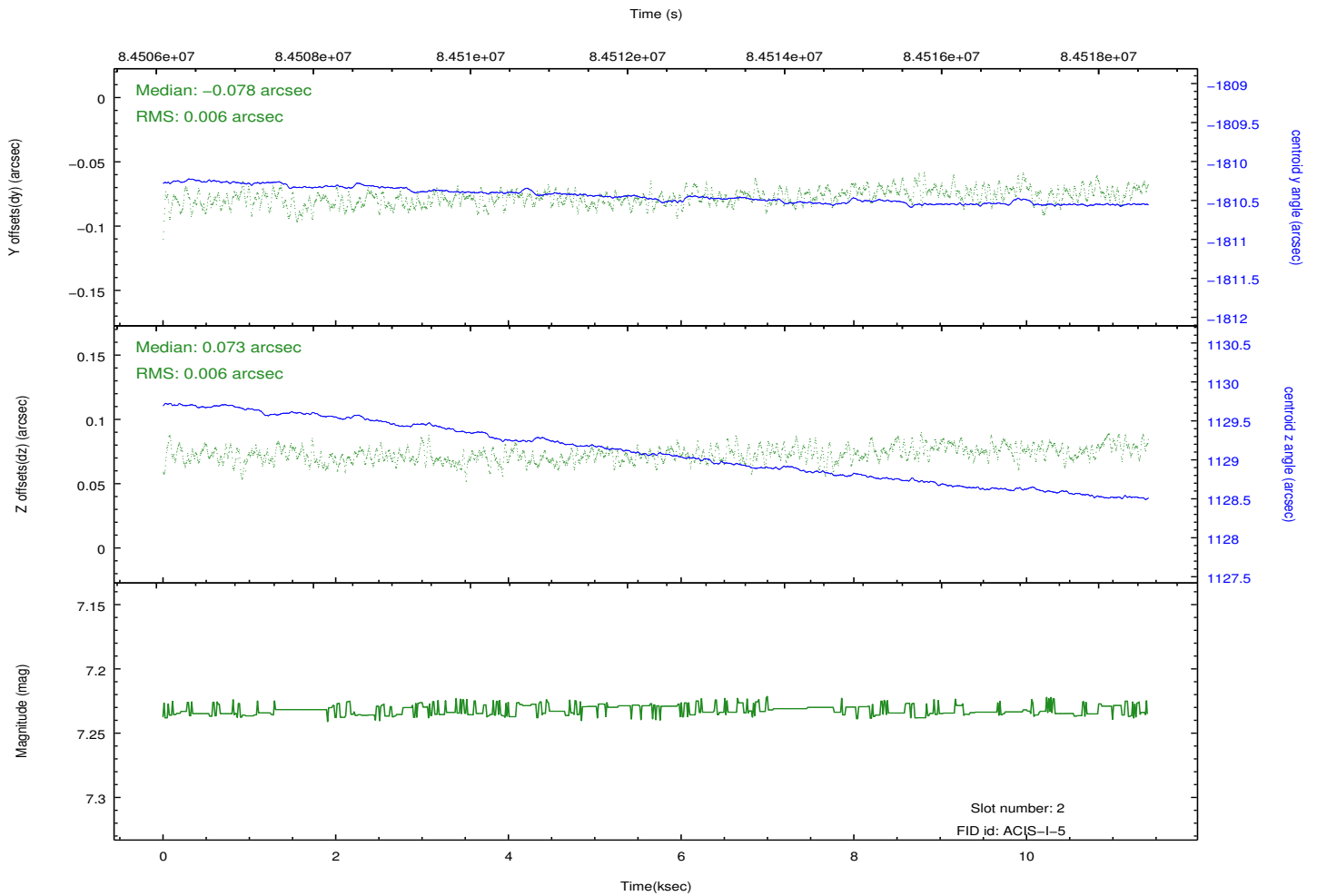
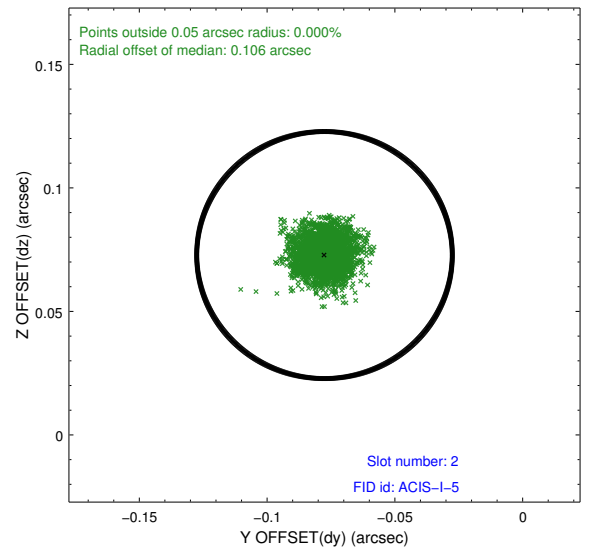
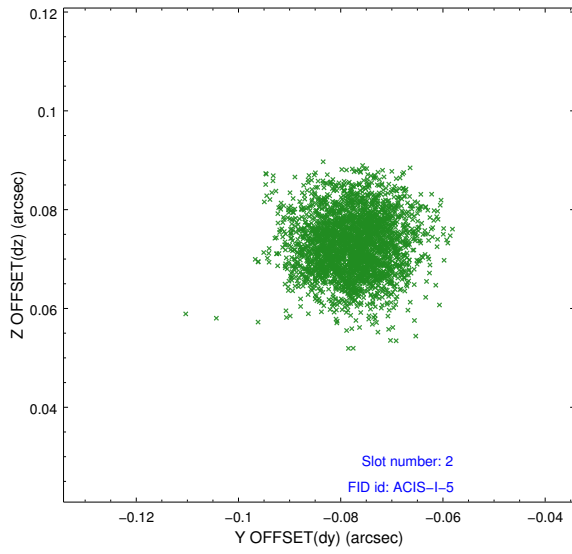
2.5.1 Slot 0



2.5.2 Slot 1



2.5.3 Slot 2



A Summary

A.1 Status

V&V Scientist	Jen Lauer
V&V Date (YYYY-MM-DD)	2012.09.07
V&V Edition	1
V&V Disposition and Status	OK
V&V Charge Time	11.401

A.2 Comments