

V&V Reference Report

L2 ASCDS Version : 8.5.1.1

Observation 5793 - L2 Version 3
Chandra X-Ray Center

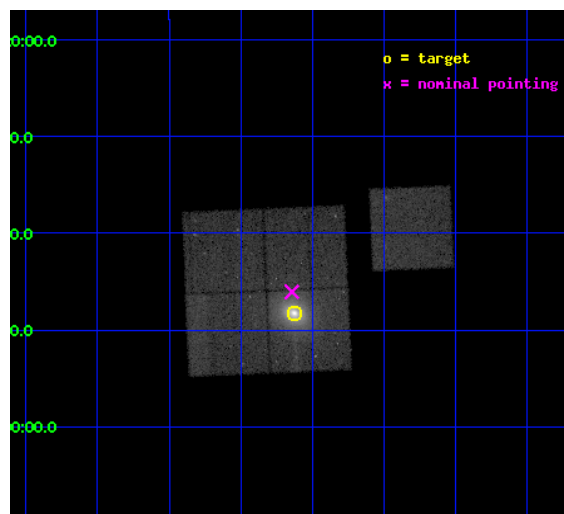
L2 Processing Date : Dec 20 2012

Contents

1	Front	2
2	OBI	3
2.1	OBI	3
2.1.1	Images	3
2.1.2	Bias	3
2.1.3	Parameters	4
2.1.4	Events	4
2.2	Compared Parameters	5
2.3	Aspect	6
2.4	Star Slots	9
2.4.1	Slot 3	9
2.4.2	Slot 4	10
2.4.3	Slot 5	11
2.4.4	Slot 6	12
2.4.5	Slot 7	13
2.5	FID Slots	14
2.5.1	Slot 0	14
2.5.2	Slot 1	15
2.5.3	Slot 2	16
A	Summary	17
A.1	Status	17
A.2	Comments	17

1 Front

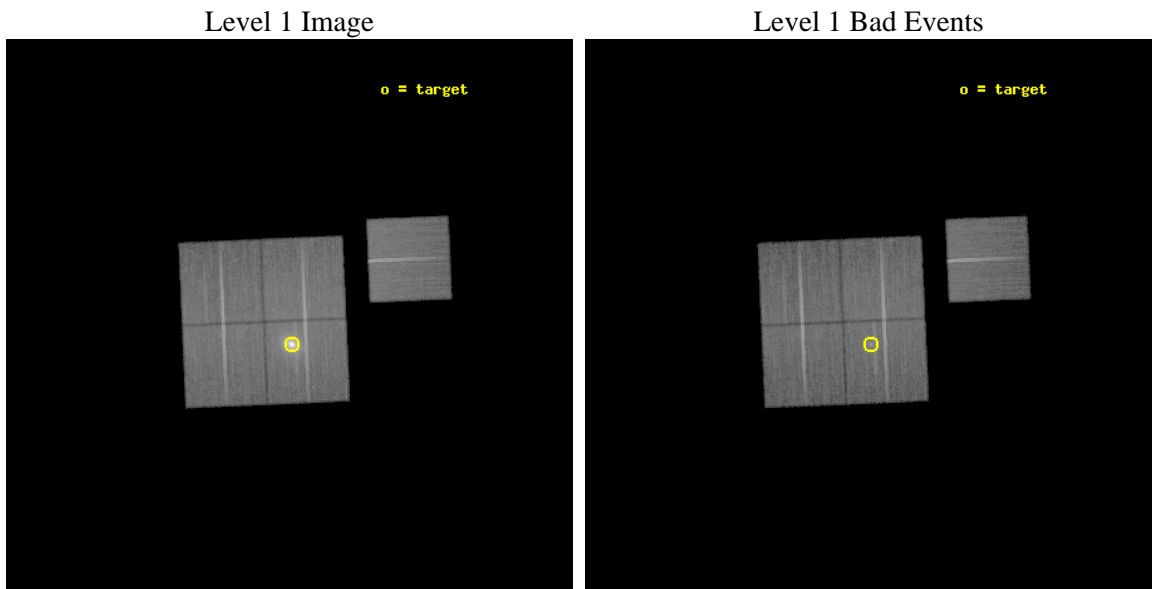
seq_num	800506	Sequence number
obs_id	5793	Observation id
title	A detailed Chandra Study of the cluster with the most luminous cooling core at $z > 0.25$	Proposal title
observer	Dr. Hans Boehringer	Principal investigator
object	RXCJ1504.1-0248	Source name
dtcycle	0	
cycle	P	events from which exps? Prim/Second/Both
ra_targ	226.032083	Observer's specified target RA [deg]
dec_targ	-2.805	Observer's specified target Dec [deg]
ra_nom	226.0356213394	Nominal RA [deg]
dec_nom	-2.7675035974331	Nominal Dec [deg]
roll_nom	87.537553563804	Nominal Roll [deg]
revision	3	Processing version of data
ontime	39673.676962942	Sum of GTIs [s]
livetime	39155.311166085	Livetime [s]
ontime0	39679.958903641	Sum of GTIs [s]
ontime1	39664.253972352	Sum of GTIs [s]
ontime2	39683.09992367	Sum of GTIs [s]
ontime3	39673.676962942	Sum of GTIs [s]
ontime6	39673.670832396	Sum of GTIs [s]
l2events	242582	Number of level 2 events



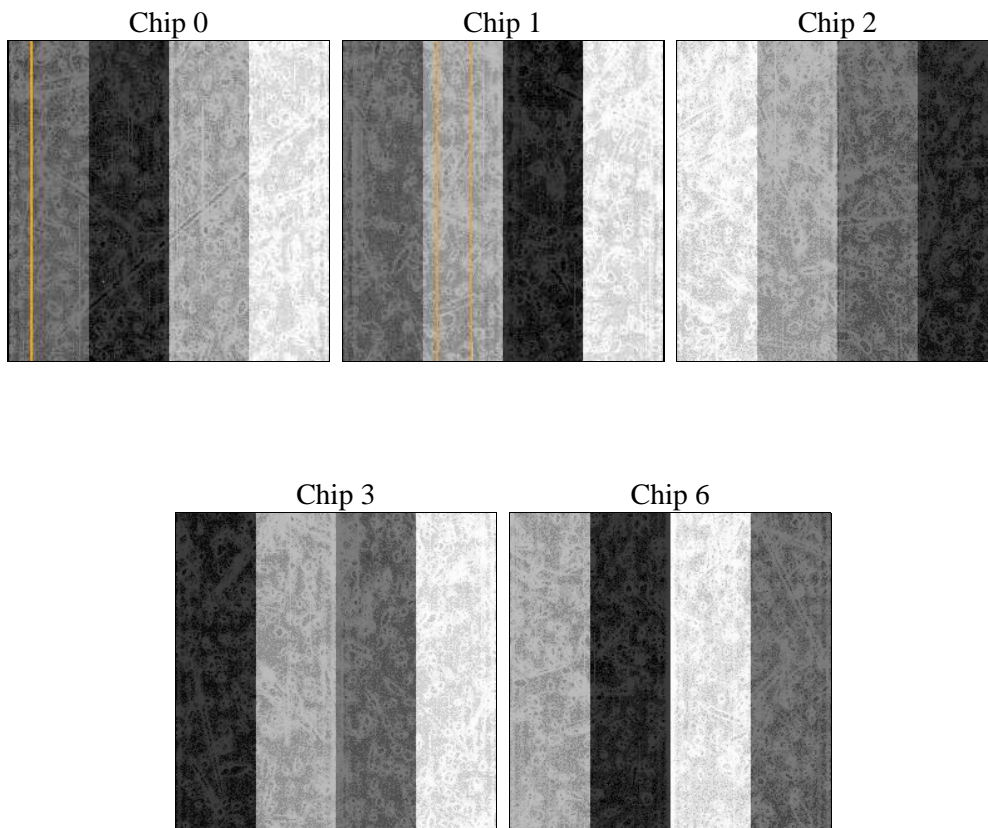
2 OBI

2.1 OBI

2.1.1 Images



2.1.2 Bias



2.1.3 Parameters

obi_num	0	Obi number	sched_exp_time	39624.006000	[s] Scheduled observation exposure time
ascdsver	8.5.1.1	Processing system revision	ontime	39673.676962942	Sum of GTIs [s]
caldbver	4.5.5	 	ontime0	39679.958903641	Sum of GTIs [s]
date	2012-12-20T20:10:09	Date and time of file creation	ontime1	39664.253972352	Sum of GTIs [s]
revision	3	Processing version of data	ontime2	39683.09992367	Sum of GTIs [s]
			ontime3	39673.676962942	Sum of GTIs [s]
			ontime6	39673.670832396	Sum of GTIs [s]
			l1events	1359065	Number of level 1 events

2.1.4 Events

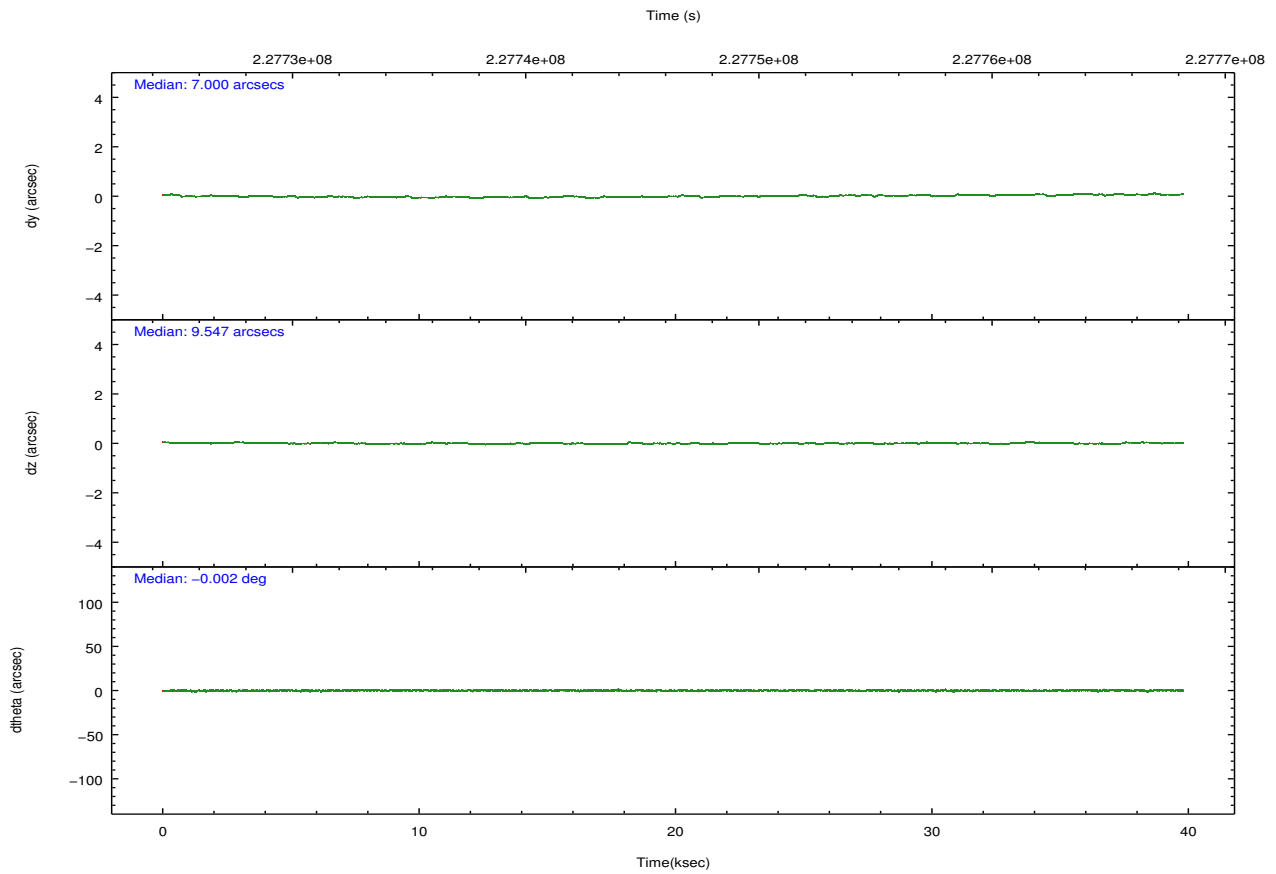
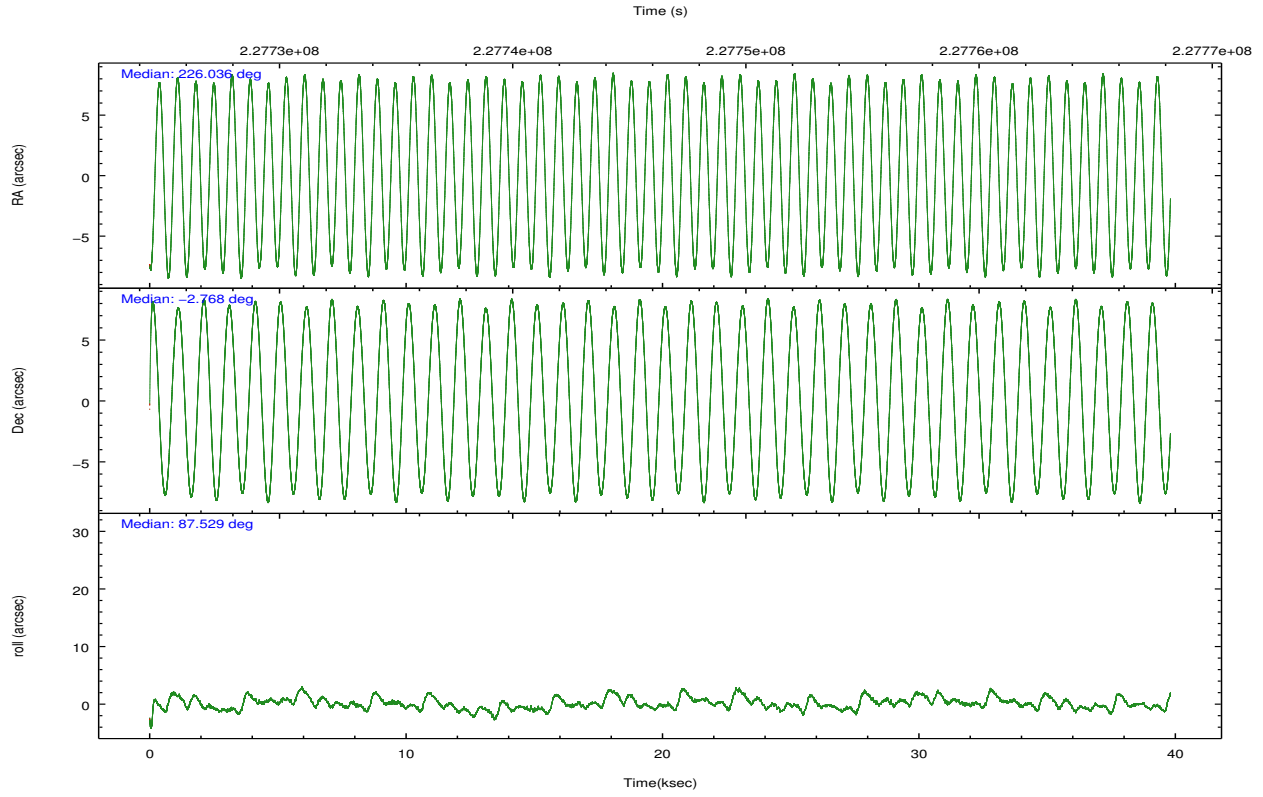
	ccd 0	ccd 1	ccd 2	ccd 3	ccd 6
level 1 events	231160	236680	267843	376247	247135
rejected events	204226	205146	239824	223770	219312
rejected %	88%	86%	89%	59%	88%

	ccd 0	ccd 1	ccd 2	ccd 3	ccd 6
grade 0 events	10559	13039	11762	113862	10730
	4%	5%	4%	30%	4%
grade 1 events	126	111	130	917	101
	0%	0%	0%	0%	0%
grade 2 events	6095	6394	6071	17673	5713
	2%	2%	2%	4%	2%
grade 3 events	2871	3179	2762	6615	2937
	1%	1%	1%	1%	1%
grade 4 events	2583	3168	2777	6604	2819
	1%	1%	1%	1%	1%
grade 5 events	8611	9177	8241	10547	9636
	3%	3%	3%	2%	3%
grade 6 events	4830	5758	4649	7735	5624
	2%	2%	1%	2%	2%
grade 7 events	195485	195854	231451	212294	209575
	84%	82%	86%	56%	84%

2.2 Compared Parameters

Parameter	Planned	Actual	Parameter	Planned	Actual
Instrument	ACIS	ACIS	Obspar format version number	7	7
Detector	ACIS-01236	ACIS-01236	Obspar file type	PREDICTED	ACTUAL
Grating	NONE	NONE	Obspar update status	NONE	UPDATED
Data mode	VFAINT	VFAINT	Number of optional ACIS chips dropped	0	0
Observation mode	POINTING	POINTING	On-chip summing requested	N	N
[deg] Pointing RA	226.048408	226.0356213394	Subarray requested	NONE	NONE
[deg] Pointing Dec	-2.791747	-2.767503597433074	Alternating exposures requested	N	N
[deg] Pointing Roll	87.329484	87.5375535638041	[s] Primary exposure time	0.000000	3.1
[mm] SIM focus pos	-0.782348	-0.7809083437167272			
[mm] SIM defocus	0	0.001439871863259334			
[mm] SIM translation stage pos	-227.592463	-227.5933067819097			
[mm] SIM translation stage offset	-6	-5.999146221020027			
[s] Observation start time (MET)	227726603.184000	227725669.76952			
Observation start date	2005-03-20T17:22:19	2005-03-20T17:07:49			
[s] Observation end time (MET)	227766227.184000	227766458.10887			
Observation end date	2005-03-21T04:22:43	2005-03-21T04:27:38			
Read mode	TIMED	TIMED			

2.3 Aspect

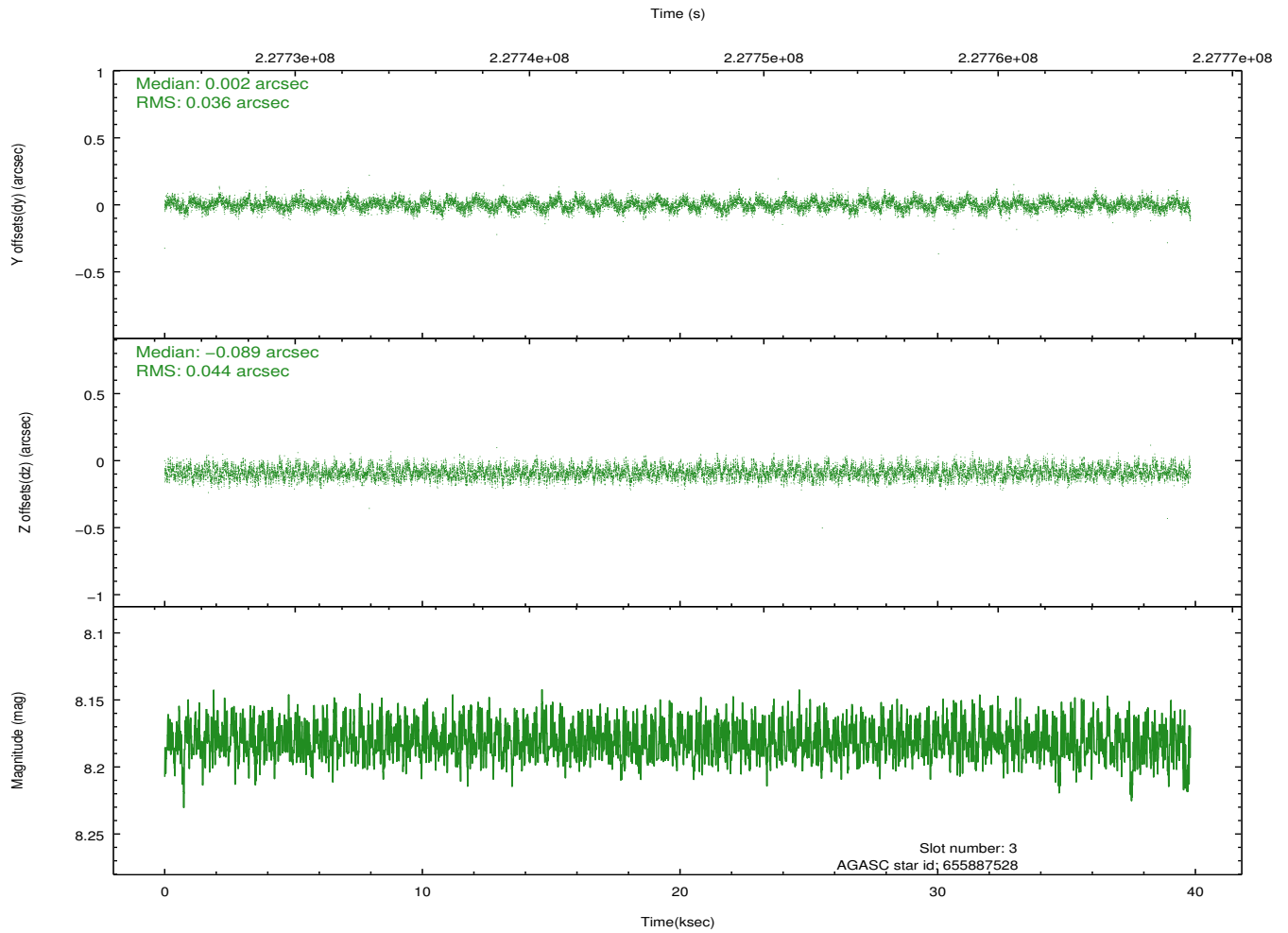
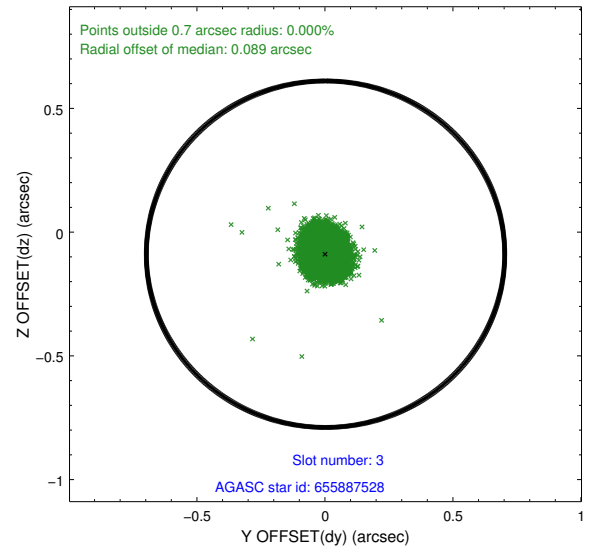
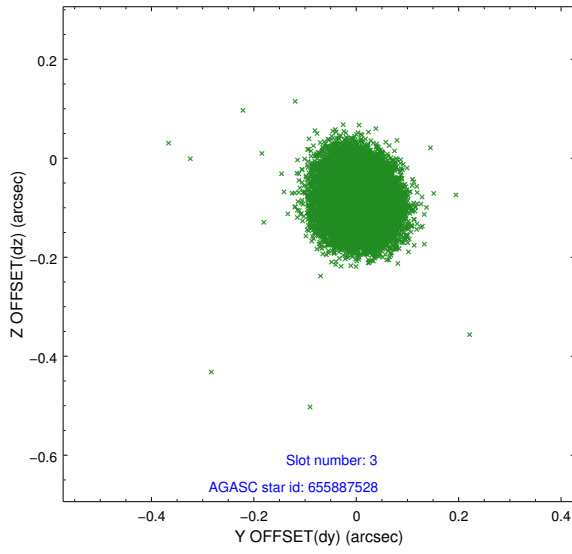


Slot Statistics

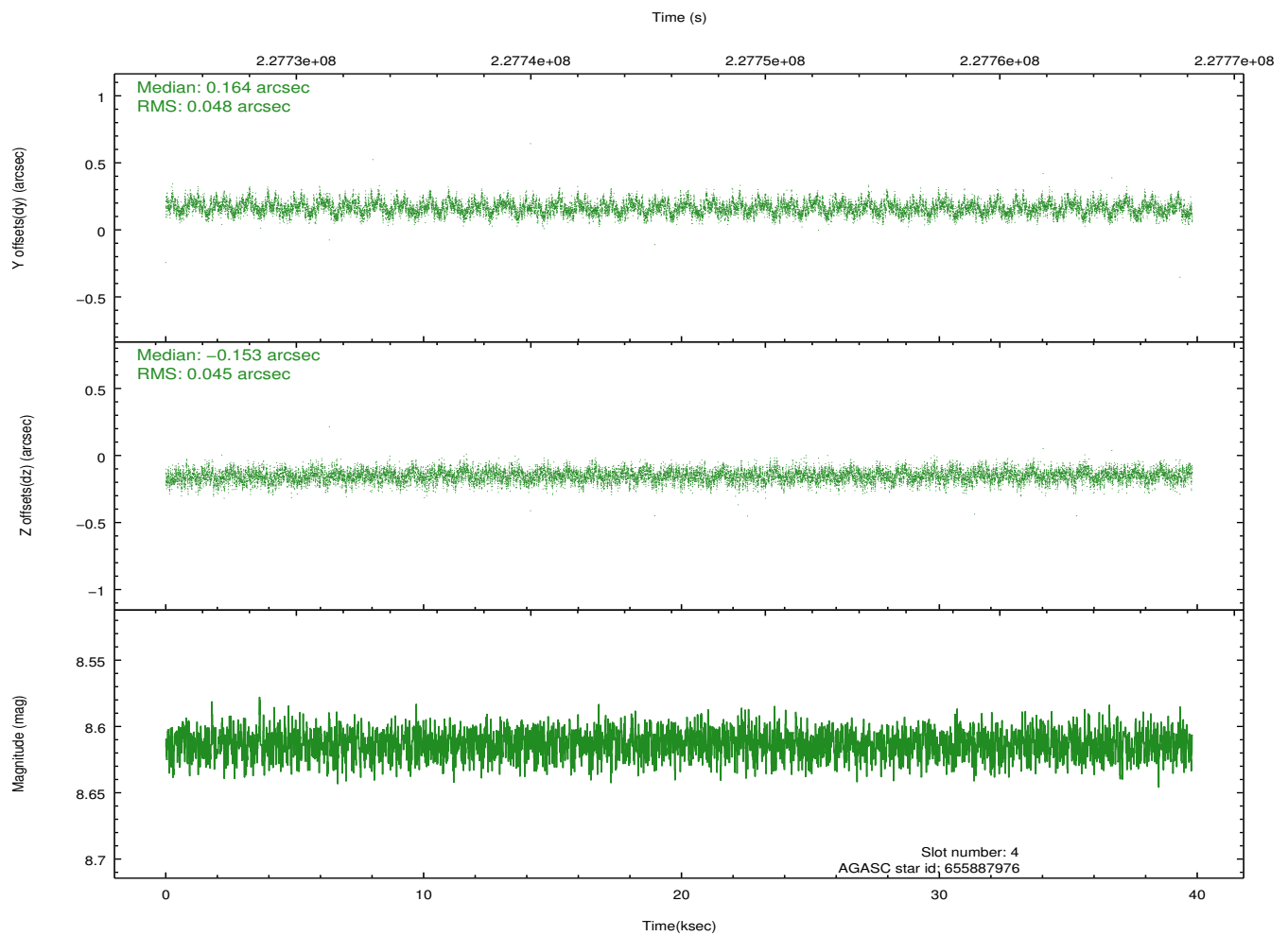
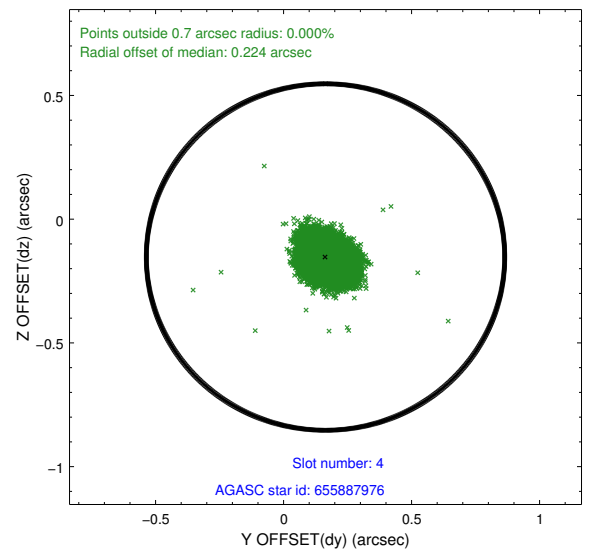
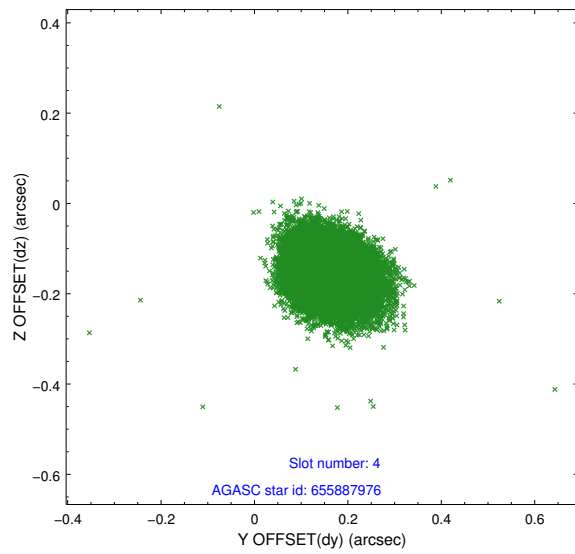
slot	status	id	mag	n_pts	med_dy	med_dz	dr1	dr2	ra	dec	mean_y	mean_z
0	FID	ACIS-I-1	7.24	9710	0.086	-0.051	0.006	0.010	0.000000	0.000000	932.65	-956.19
1	FID	ACIS-I-5	7.23	9709	-0.221	0.084	0.006	0.011	0.000000	0.000000	-1815.75	941.42
2	FID	ACIS-I-6	7.25	9710	0.044	0.037	0.007	0.011	0.000000	0.000000	398.14	1585.89
3	GUIDE	655887528	8.18	19417	0.002	-0.089	0.061	0.096	225.707931	-2.599687	633.37	1255.73
4	GUIDE	655887976	8.61	19360	0.164	-0.153	0.070	0.113	225.483318	-3.038087	-981.10	1987.63
5	GUIDE	655891488	6.98	19415	0.106	-0.010	0.067	0.108	225.686953	-3.031386	-922.58	1257.99
6	GUIDE	655887400	8.93	19400	-0.204	-0.029	0.078	0.129	225.974634	-2.124539	2386.88	377.42
7	GUIDE	655886288	8.10	19415	-0.072	0.279	0.073	0.119	226.751841	-2.297509	1895.30	-2444.20

2.4 Star Slots

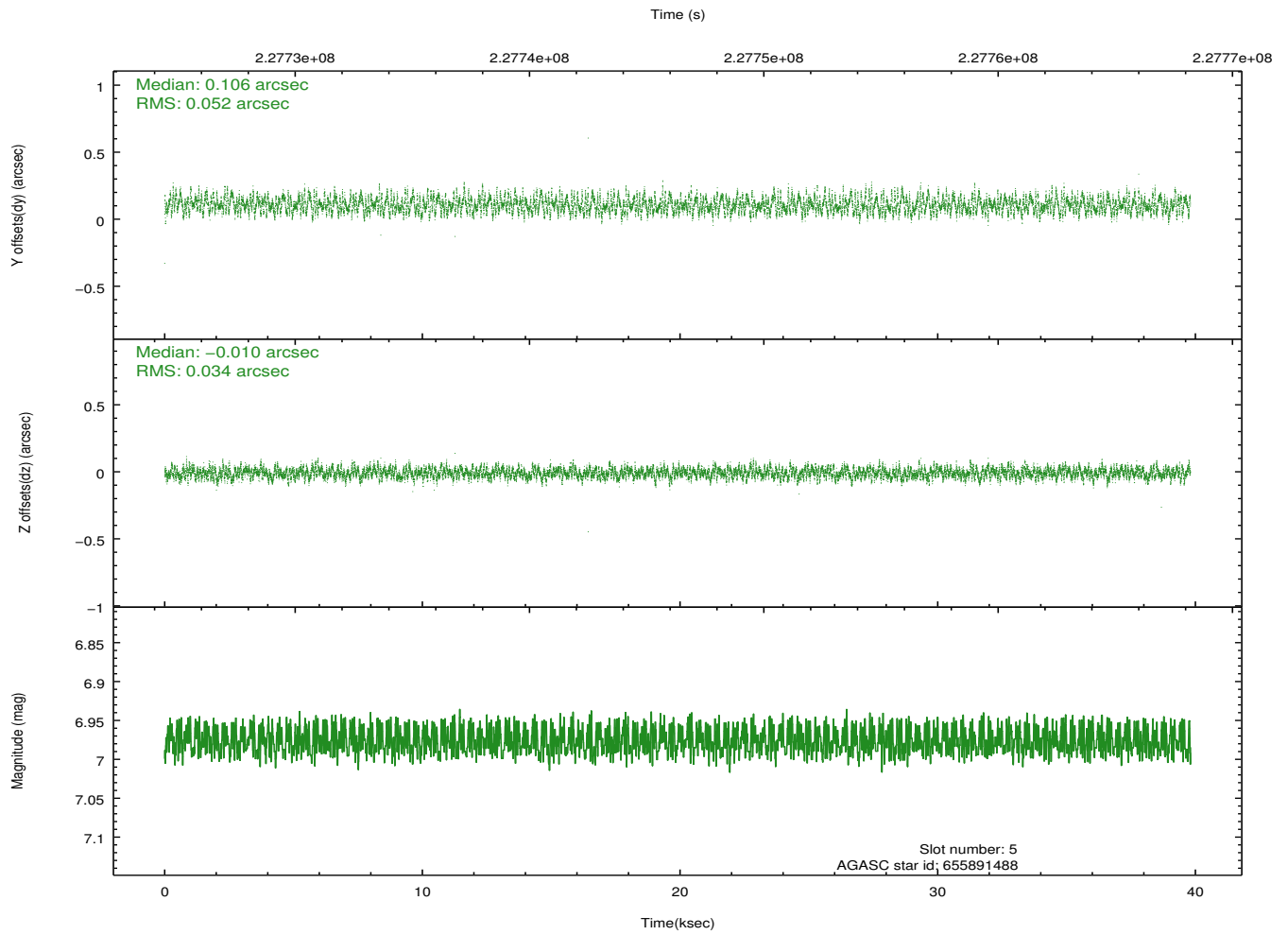
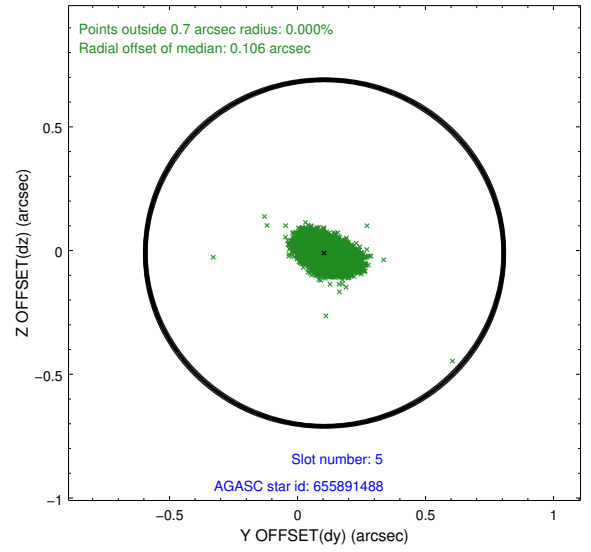
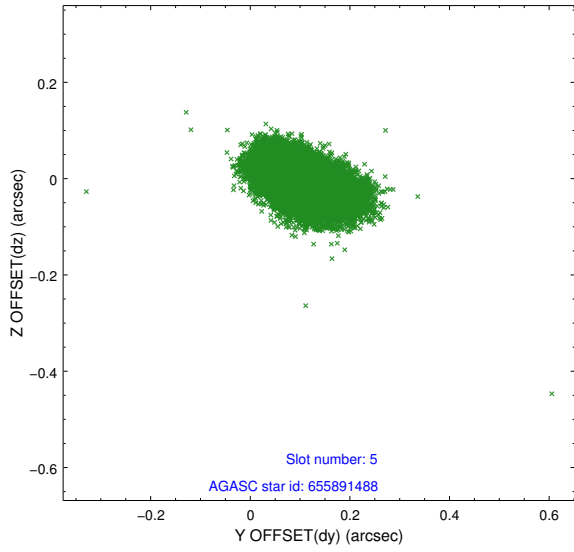
2.4.1 Slot 3



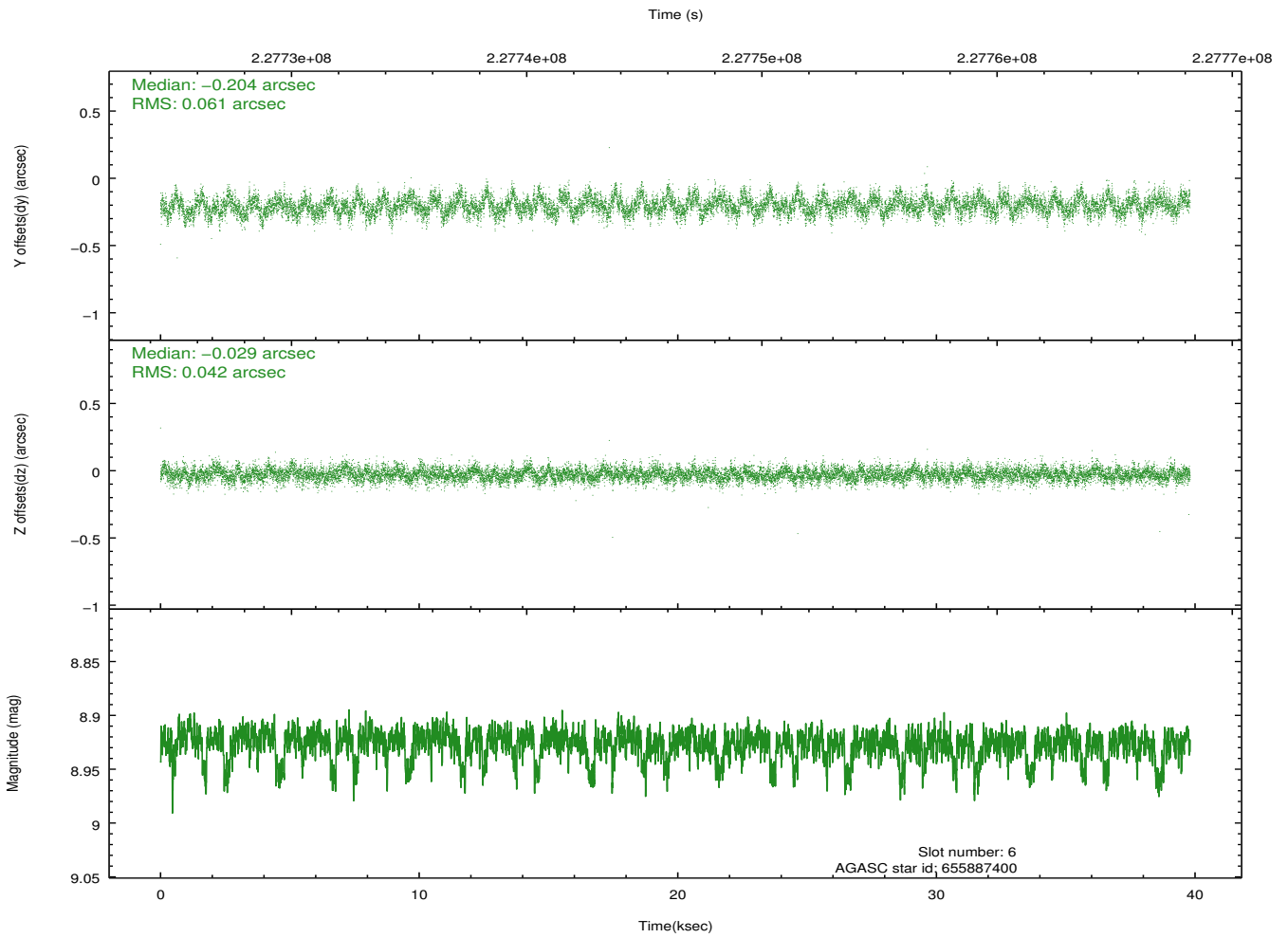
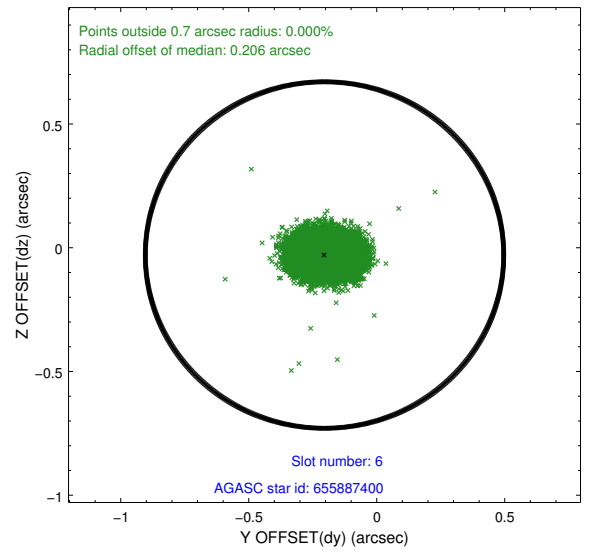
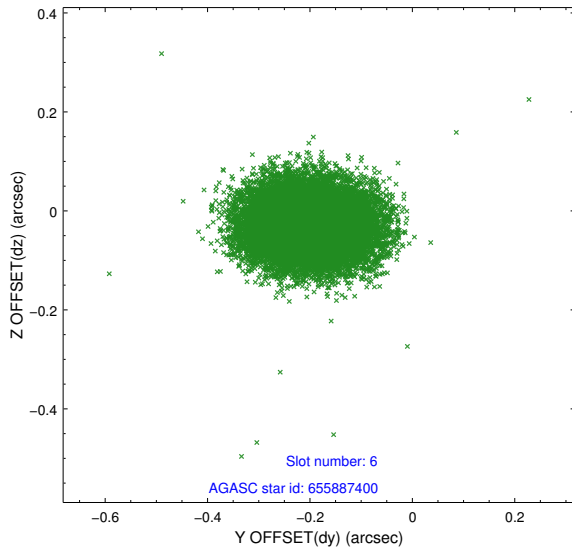
2.4.2 Slot 4



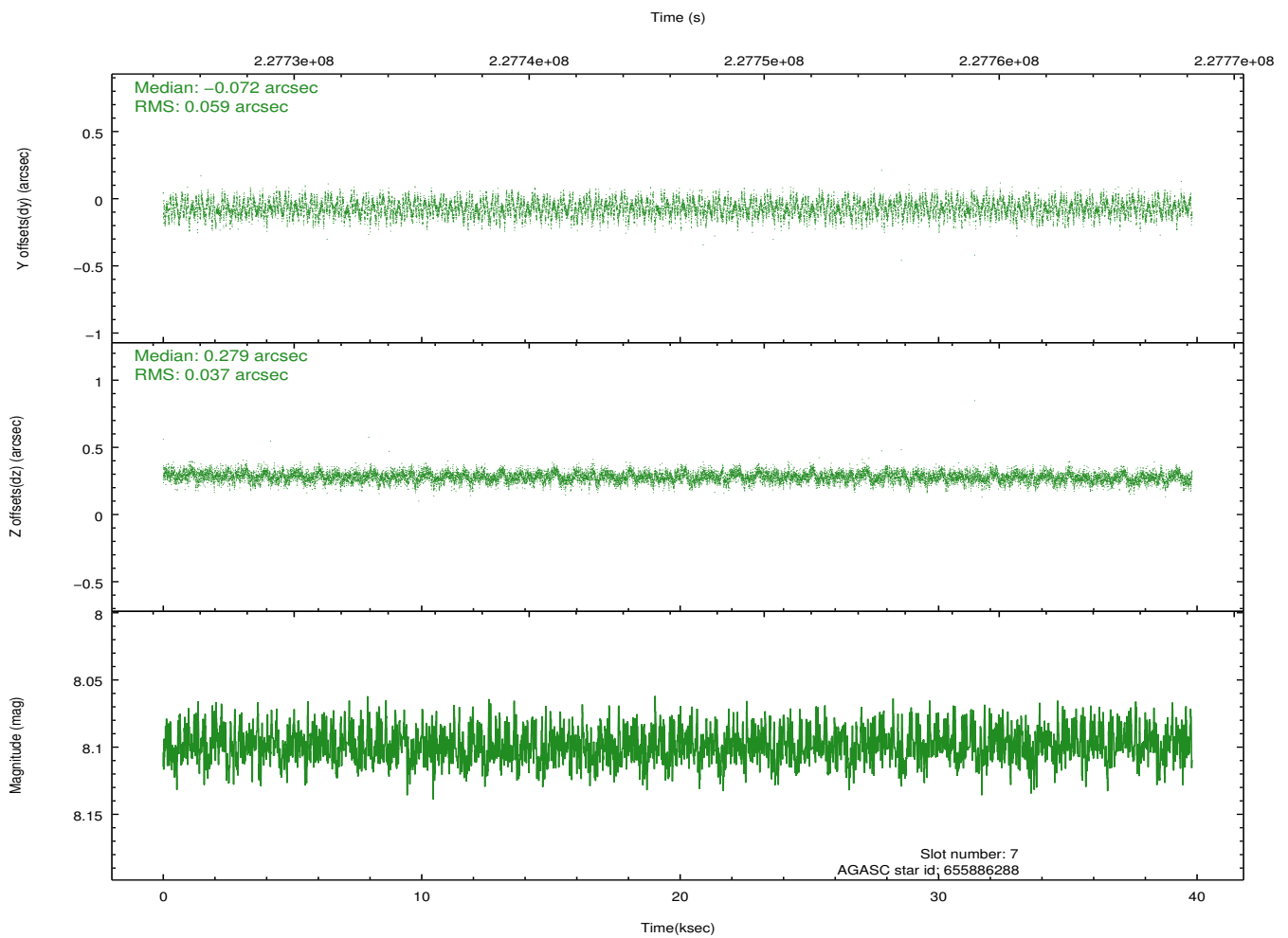
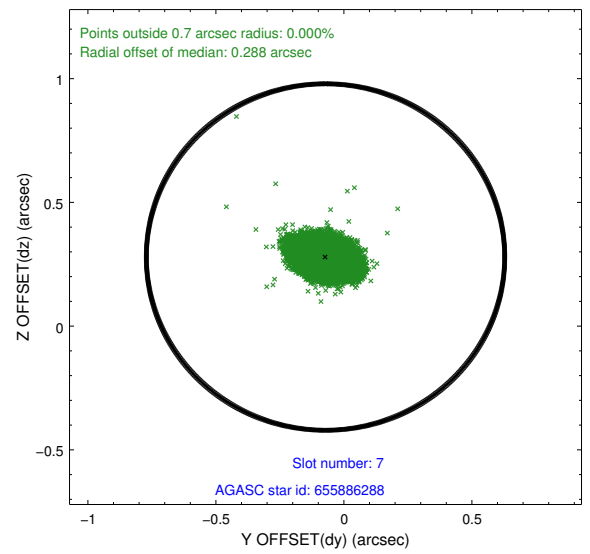
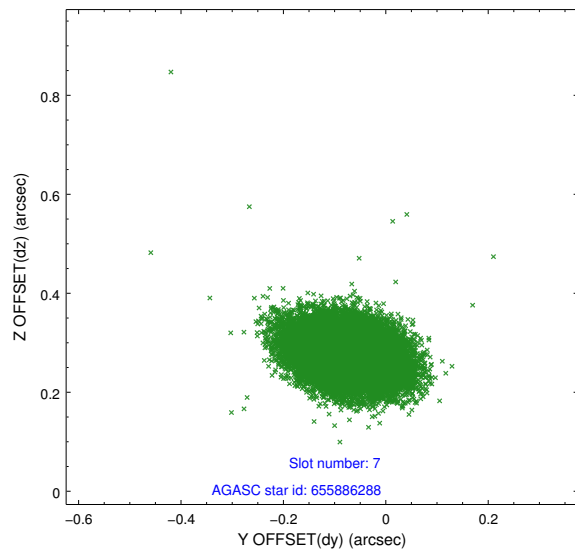
2.4.3 Slot 5



2.4.4 Slot 6

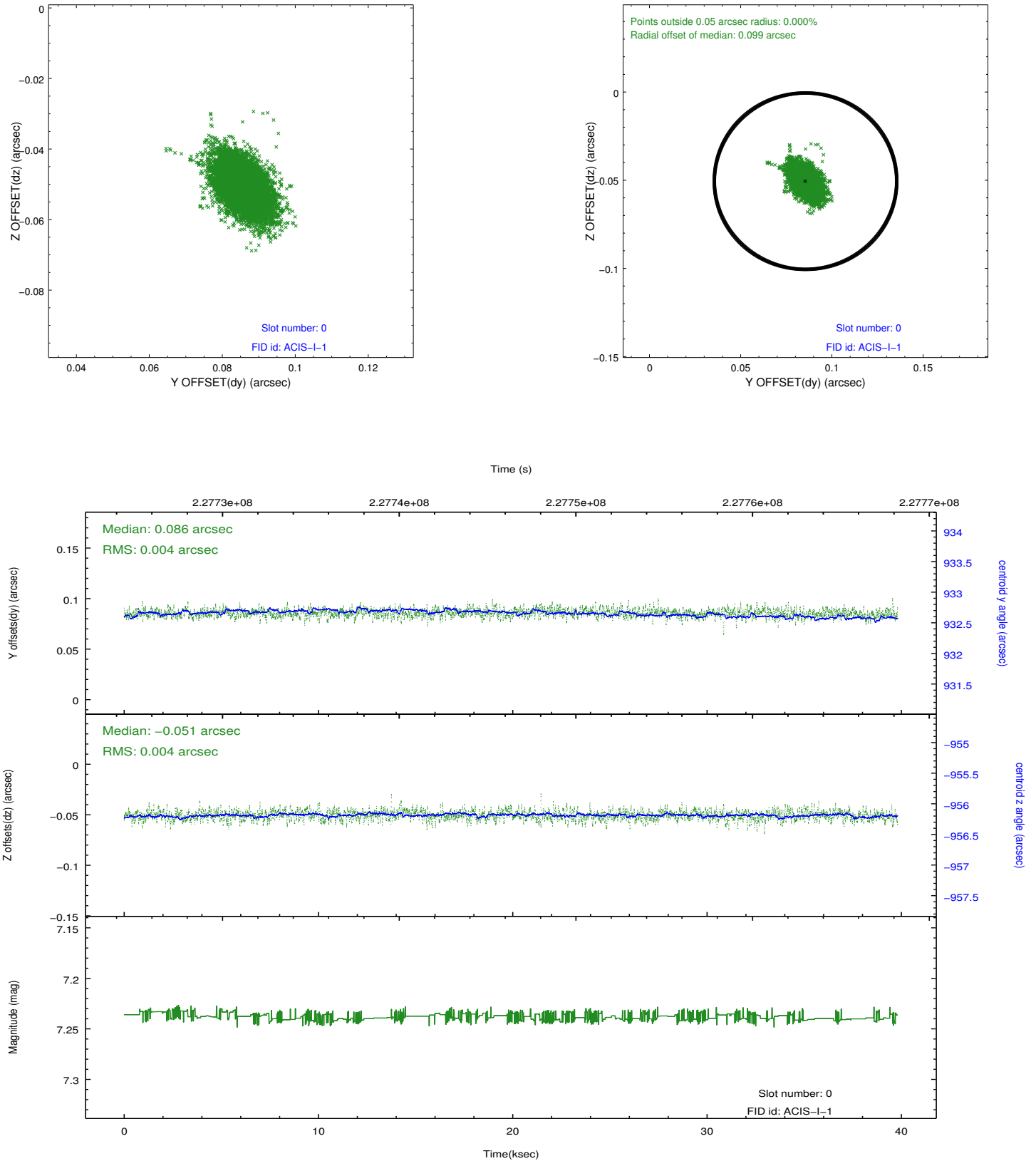


2.4.5 Slot 7

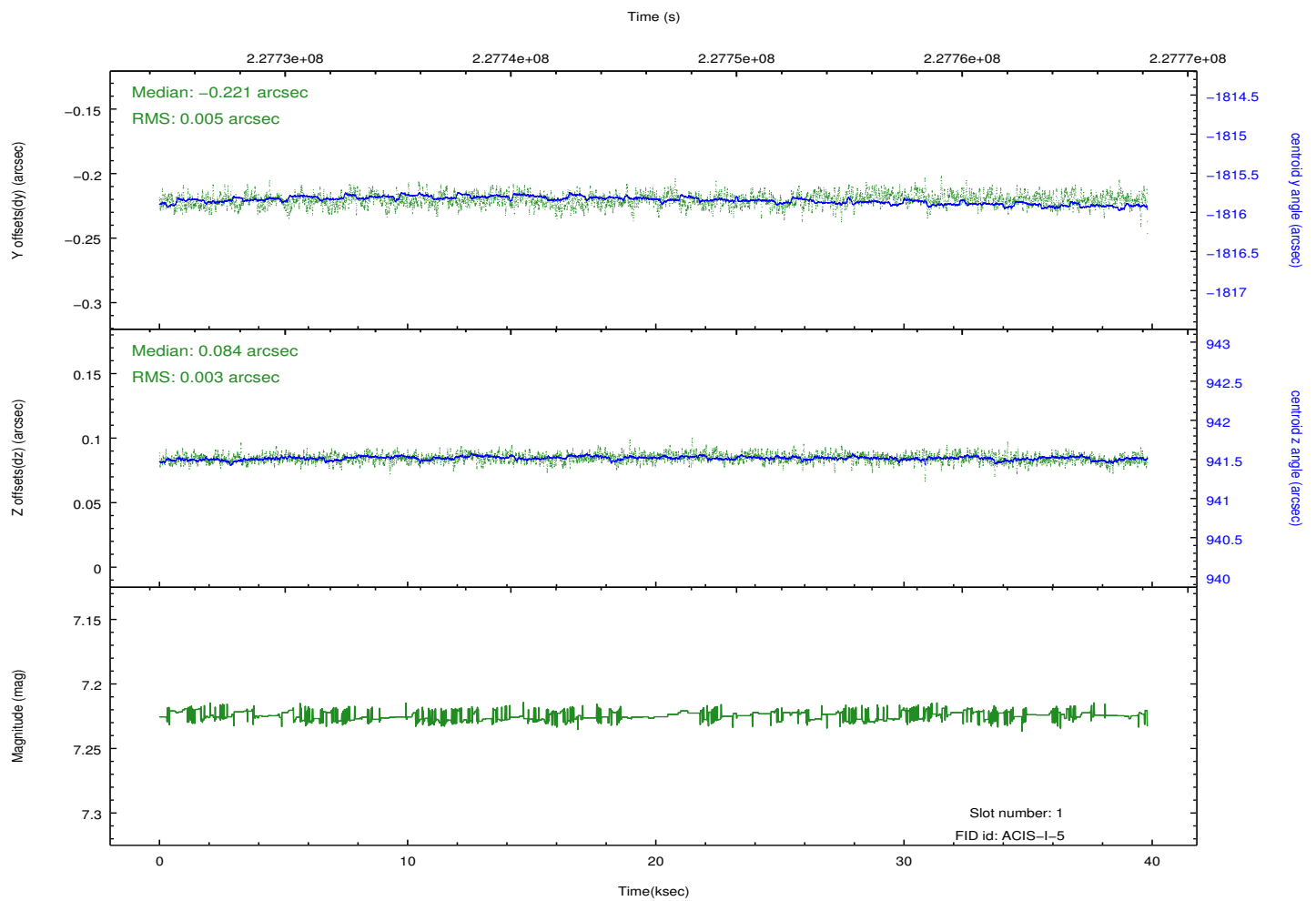
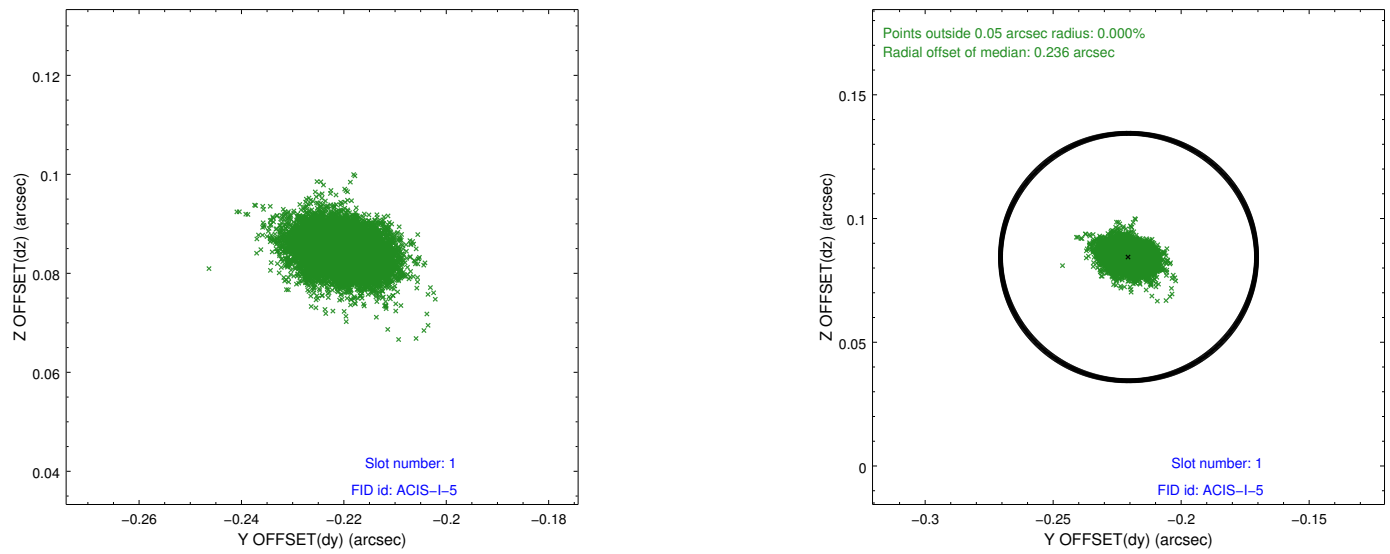


2.5 FID Slots

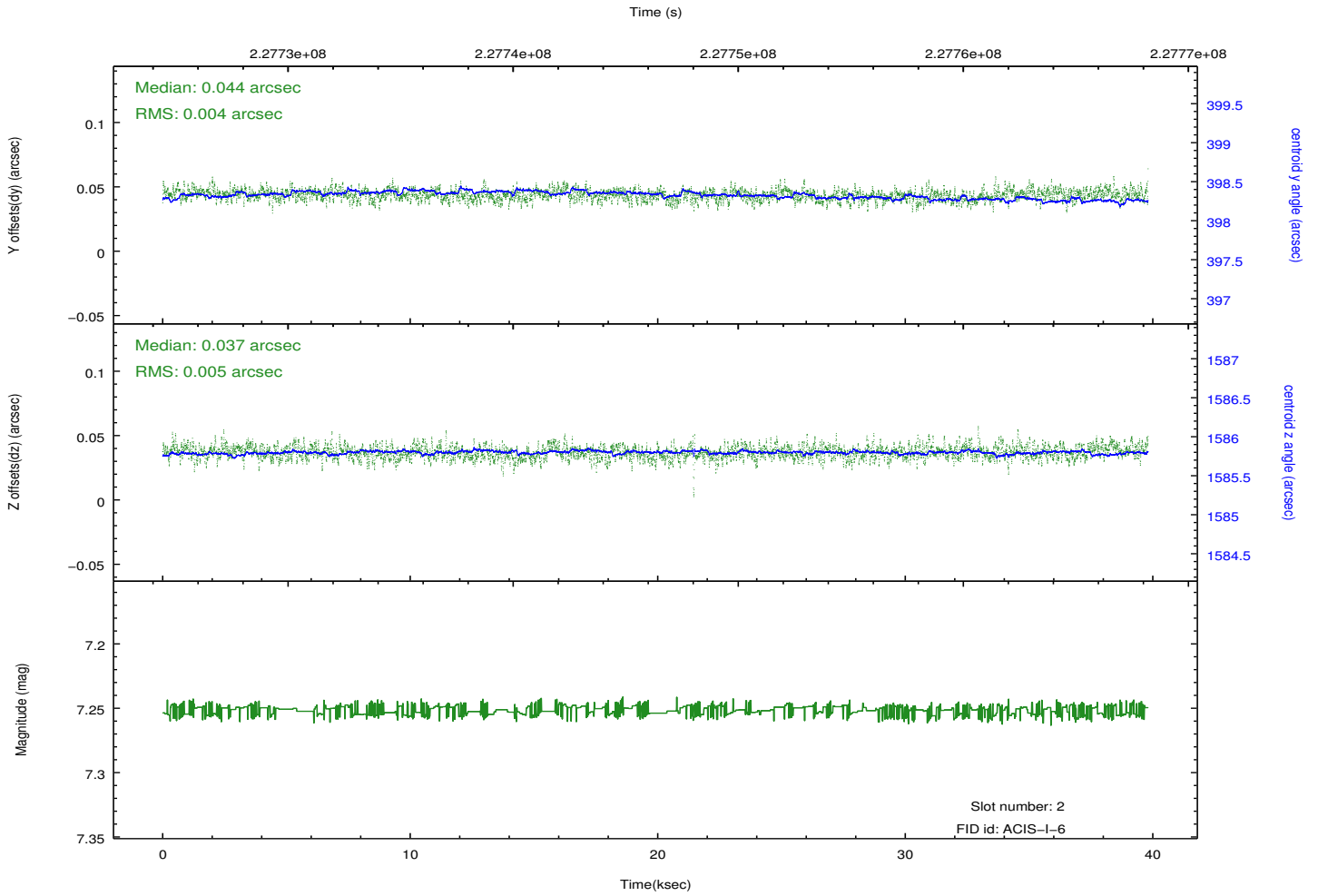
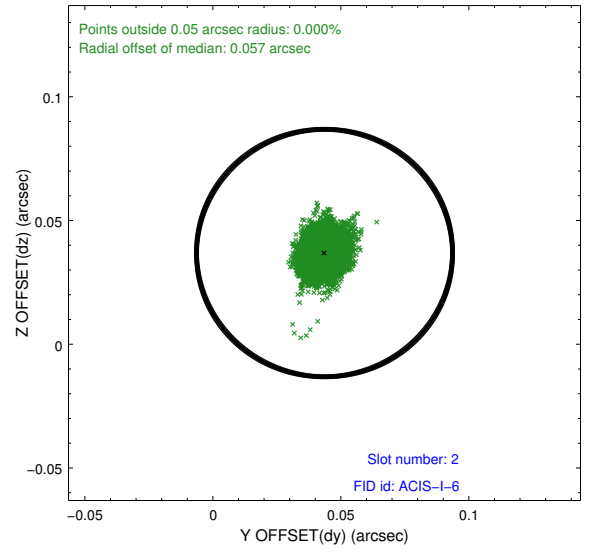
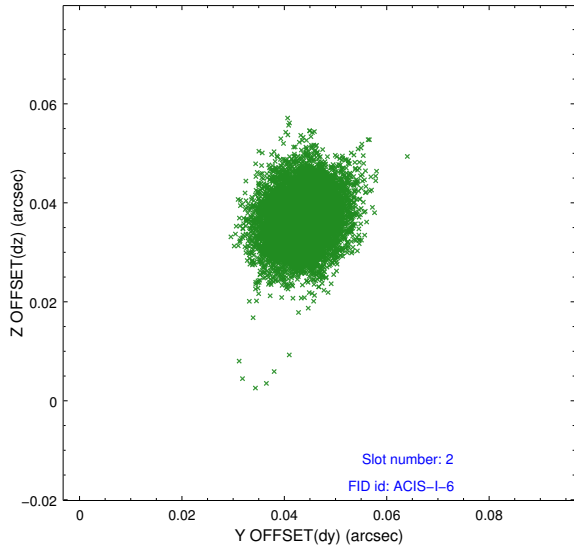
2.5.1 Slot 0



2.5.2 Slot 1



2.5.3 Slot 2



A Summary

A.1 Status

V&V Scientist	Jen Lauer
V&V Date (YYYY-MM-DD)	2013.01.14
V&V Edition	1
V&V Disposition and Status	OK
V&V Charge Time	39.67367

A.2 Comments