

V&V Reference Report

L2 ASCDS Version : 7.6.8

Observation 60503 - L2 Version 001
Chandra X-Ray Center

L2 Processing Date : Jun 29 2006

Contents

1	Front	2
2	OBI	3
2.1	OBI	3
2.1.1	Images	3
2.1.2	Bias	3
2.1.3	Parameters	4
2.1.4	Events	4
2.2	Compared Parameters	5
2.3	Aspect	6
2.4	Star Slots	8
2.5	FID Slots	8
A	Summary	9
A.1	Status	9
A.2	Comments	9

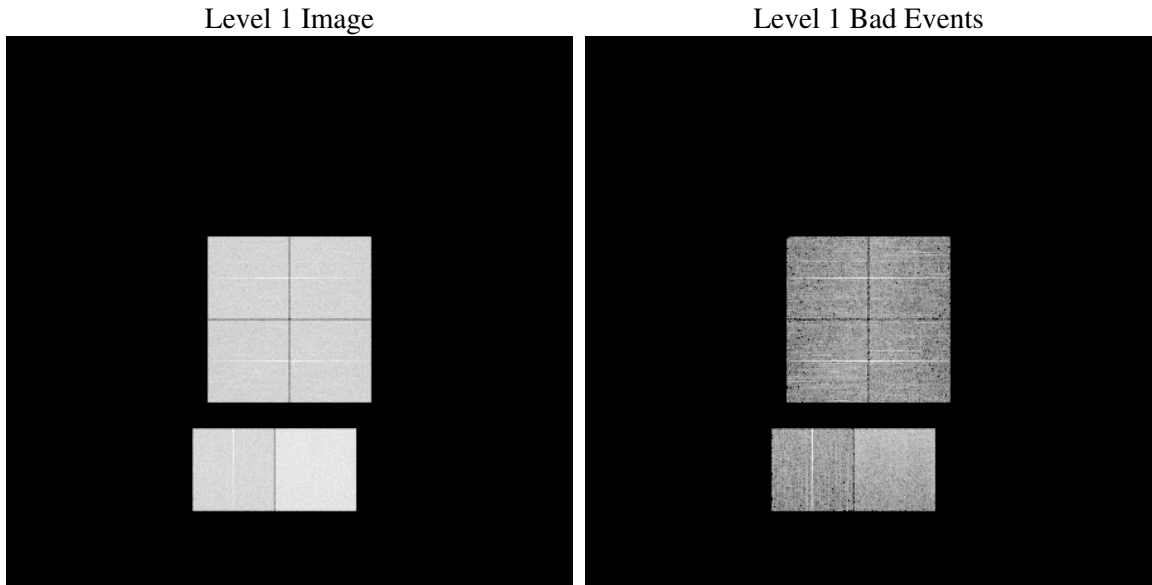
1 Front

seq_num	
obs_id	60503
title	ACIS-012367 diagnostics
observer	CHANDRA engineering request/realtime commanding
object	
dtcycle	0
cycle	P
ra_targ	0.0
dec_targ	0.0
ra_nom	47.966613650139
dec_nom	34.007179613589
roll_nom	132.56602345795
revision	2
ontime	8463.3211533725
livetime	8356.1534849283
ontime0	5540.0011451542
ontime1	5614.584540695
ontime2	5228.9490401447
ontime3	5429.7251371443
ontime6	5890.1505095661
ontime7	8463.3211533725
l2events	1227469

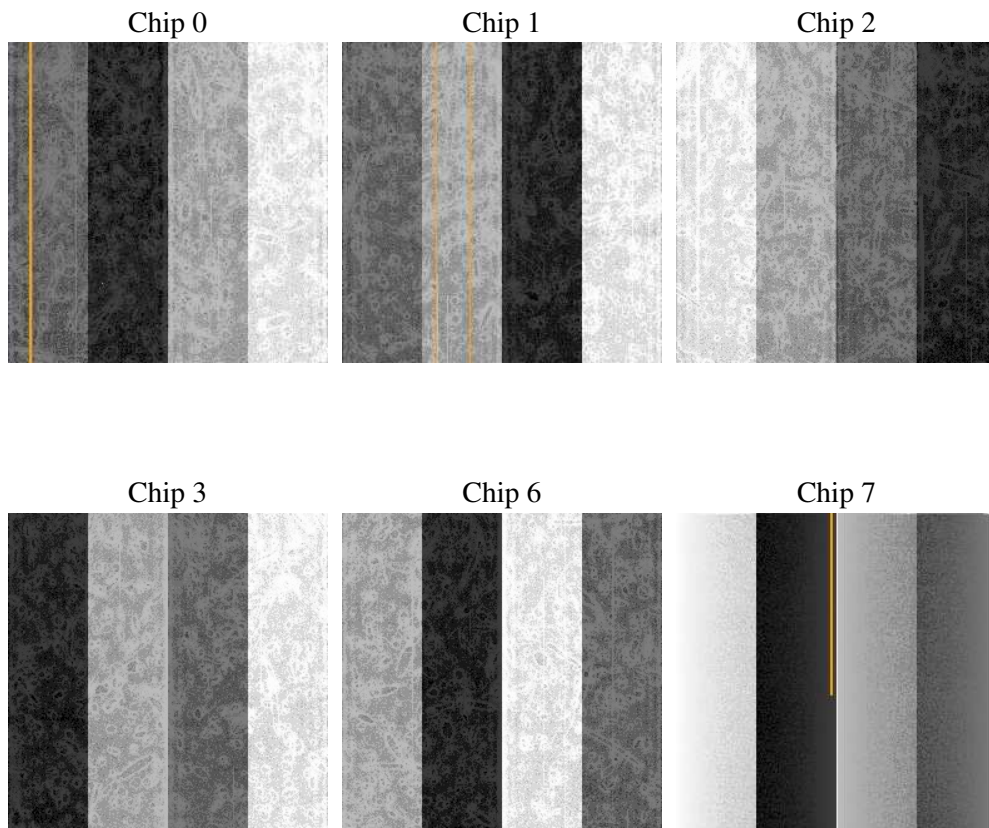
2 OBI

2.1 OBI

2.1.1 Images



2.1.2 Bias



2.1.3 Parameters

obi_num	0
ascdsver	7.6.8
caldbver	3.2.2
date	2006-06-29T17:40:50
revision	2

sched_exp_time	0.0
ontime	8465.5070839226
ontime0	5542.146035701
ontime1	5616.6883912385
ontime2	5231.0118506849
ontime3	5431.9521076977
ontime6	5892.1722801328
ontime7	8465.5070839226
l1events	1538179

2.1.4 Events

	ccd 0	ccd 1	ccd 2	ccd 3	ccd 6	ccd 7
level 1 events	230940	233808	224090	230324	256030	362987
rejected events	36616	36817	38791	37543	41348	60954
rejected %	15%	15%	17%	16%	16%	16%

	ccd 0	ccd 1	ccd 2	ccd 3	ccd 6	ccd 7
grade 0 events	107815	107702	105154	109204	115906	49937
	46%	46%	46%	47%	45%	13%
grade 1 events	588	477	628	633	522	138
	0%	0%	0%	0%	0%	0%
grade 2 events	33345	36021	30612	32257	38065	94226
	14%	15%	13%	14%	14%	25%
grade 3 events	12504	12294	11879	12370	13007	20977
	5%	5%	5%	5%	5%	5%
grade 4 events	12431	12299	11749	12443	12927	20425
	5%	5%	5%	5%	5%	5%
grade 5 events	2416	2487	2274	2485	2701	7156
	1%	1%	1%	1%	1%	1%
grade 6 events	28360	28802	26048	26637	34888	116577
	12%	12%	11%	11%	13%	32%
grade 7 events	33481	33726	35746	34295	38014	53551
	14%	14%	15%	14%	14%	14%

2.2 Compared Parameters

Parameter	Planned	Actual	Parameter	Planned	Actual
Instrument	ACIS	ACIS	Obspar format version number	6	6
Detector	ACIS-012367	ACIS-012367	Obspar file type	PREDICTED	ACTUAL
Grating	NONE	NONE	Obspar update status	NONE	UPDATED
Data mode	FAINT	FAINT	On-chip summing requested	N	N
Observation mode	SECONDARY	SECONDARY	Subarray requested	NONE	NONE
Pointing RA	0	47.96661365013894	Alternating exposures requested	N	N
Pointing Dec	0	34.00717961358857	Primary exposure time	0.000000	3.2
Pointing Roll	0.0	132.566023457952			
SIM focus pos (mm)	-0.782348	-0.6828225247311905			
SIM defocus (mm)	0	0.8505141146731063			
SIM translation stage pos (mm)	-233.592463	250.466033080201			
SIM translation stage offset (mm)	0	-0.01005468664627074			
Observation start time	183024291.313175	183024290.28844			
Observation start date	2003-10-20T08:04:51	2003-10-20T08:04:50			
Observation end time	183048015.964196	183048014.93947			
Observation end date	2003-10-20T14:40:16	2003-10-20T14:40:14			
Read mode	TIMED	TIMED			

2.3 Aspect

2.4 Star Slots

2.5 FID Slots

A Summary

A.1 Status

V&V Scientist	Beth Sundheim
V&V Date (YYYY-MM-DD)	2006.06.29
V&V Edition	1
V&V Disposition and Status	OK
V&V Charge Time	8.46332115

A.2 Comments

Focal plane temperature is warmer than -118 degrees during entire observation. The ACIS calibrations are not verified or necessarily applicable for focal plane temperatures warmer than -118 degrees.