

V&V Reference Report

L2 ASCDS Version : 8.5.1.1

Observation 6073 - L2 Version 3
Chandra X-Ray Center

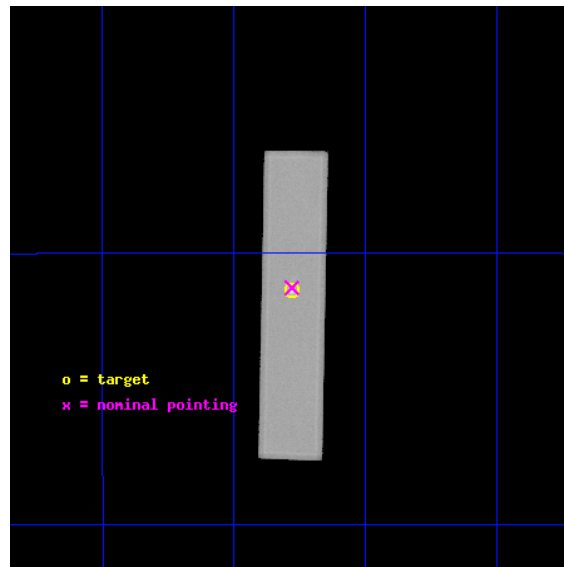
L2 Processing Date : Dec 20 2012

Contents

1	Front	2
2	OBI	3
2.1	OBI	3
2.1.1	Images	3
2.1.2	Parameters	4
2.1.3	Events	4
2.2	Compared Parameters	5
2.3	Aspect	6
2.4	Star Slots	9
2.4.1	Slot 3	9
2.4.2	Slot 4	10
2.4.3	Slot 5	11
2.4.4	Slot 6	12
2.4.5	Slot 7	13
2.5	FID Slots	14
2.5.1	Slot 0	14
2.5.2	Slot 1	15
2.5.3	Slot 2	16
A	Summary	17
A.1	Status	17
A.2	Comments	17

1 Front

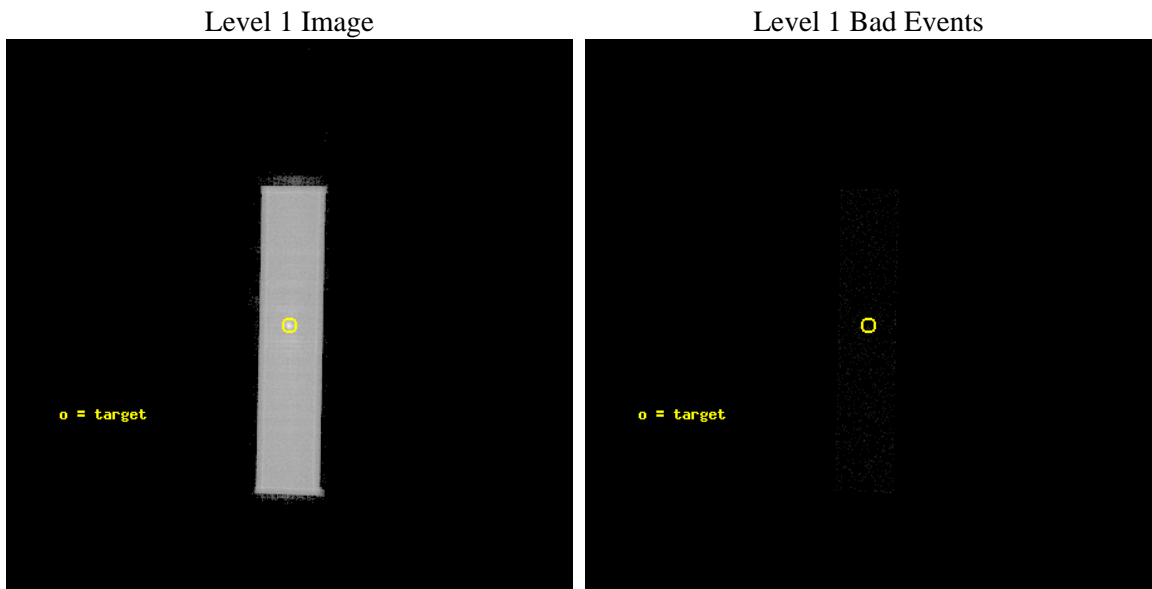
seq_num	590400	Sequence number
obs_id	6073	Observation id
title	AO6A Observations of the Standard Candles Cas A and G21.5-09	Propo
observer	Dr. CXC Calibration	Principal investigator
object	G21.5-09	Source name
ra_targ	278.389583	Observer's specified target RA [deg]
dec_targ	-10.568528	Observer's specified target Dec [deg]
ra_nom	278.38966120392	Nominal RA [deg]
dec_nom	-10.563746056999	Nominal Dec [deg]
roll_nom	91.041086758639	Nominal Roll [deg]
revision	3	Processing version of data
ontime	20146.632164001	[s]
livetime	20021.925270253	Ontime multiplied by DTCOR
l2events	827967	Number of level 2 events



2 OBI

2.1 OBI

2.1.1 Images



2.1.2 Parameters

obi_num	0	Obi number	sched_exp_time	20000.000000	[s] Scheduled observation exposure time
ascdsver	8.5.1.1	Processing system revision	ontime	20146.632164001	[s]
caldsver	4.5.5	 	l1events	1090260	Number of level 1 events
date	2012-12-20T16:07:57	Date and time of file creation			
revision	3	Processing version of data			

2.1.3 Events

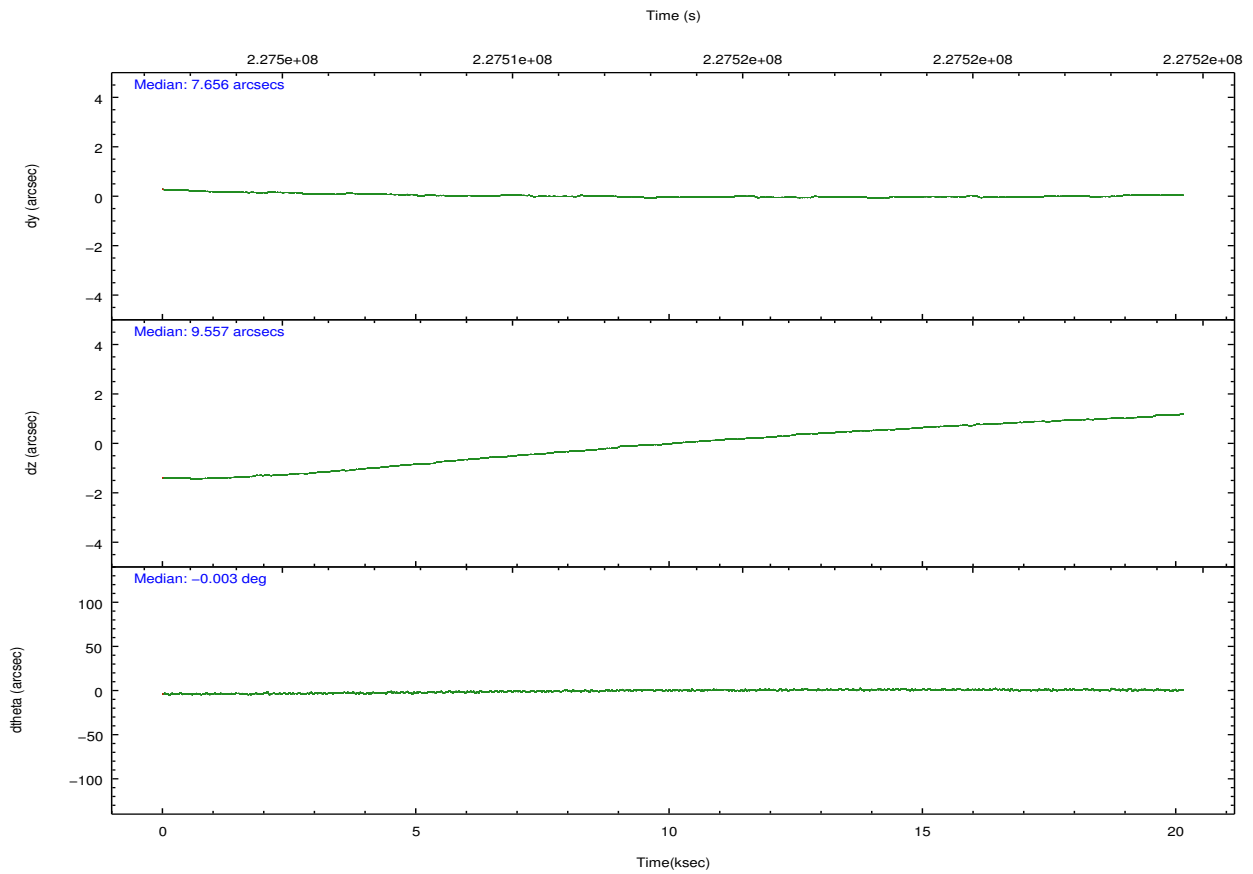
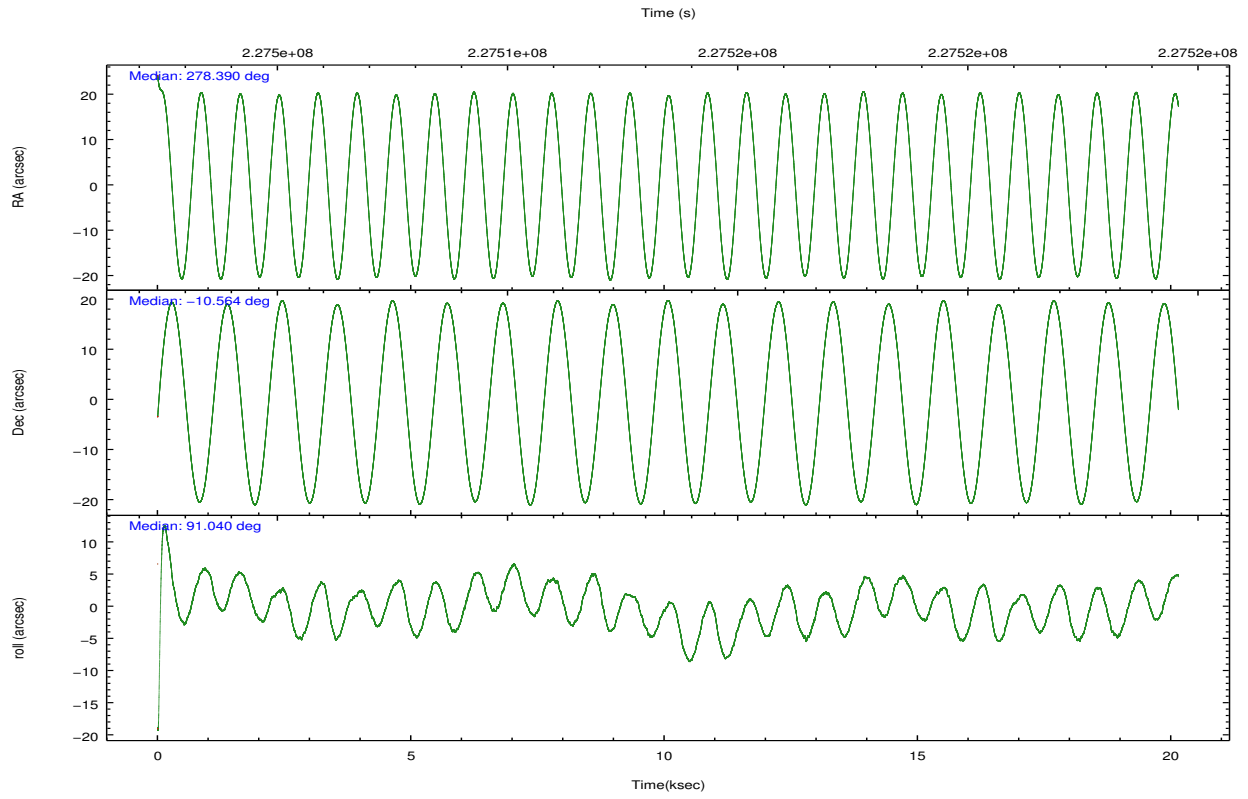
Level 1 Events

	segment 1	segment 2	segment 3
level 1 events	0	1090255	5
rejected events	0	61068	5
rejected %	0%	5%	100%

2.2 Compared Parameters

Parameter	Planned	Actual	Parameter	Planned	Actual
Instrument	HRC	HRC	Obspar format version number	7	7
Detector	HRC-S	HRC-S	Obspar file type	PREDICTED	ACTUAL
Grating	NONE	NONE	Obspar update status	NONE	UPDATED
Data mode	OBSERVING	OBSERVING			
Observation mode	POINTING	POINTING			
[deg] Pointing RA	278.405854	278.3896612039242			
[deg] Pointing Dec	-10.587589	-10.56374605699853			
[deg] Pointing Roll	90.976743	91.0410867586388			
[s] Window start time (MET)	225331264.184000	225331264.184000			
[s] Window stop time (MET)	228614464.184000	228614464.184000			
[mm] SIM focus pos	-1.429586	-1.428180813131781			
[mm] SIM defocus	0.1037507710433287	0.1051558262725154			
[mm] SIM translation stage pos	250.455976	250.466033080201			
[mm] SIM translation stage offset	0	-0.01005468664627074			
[s] Observation start time (MET)	227503562.184000	227502479.59689			
Observation start date	2005-03-18T03:24:58	2005-03-18T03:07:59			
[s] Observation end time (MET)	227523562.184000	227524876.87291			
Observation end date	2005-03-18T08:58:18	2005-03-18T09:21:16			

2.3 Aspect

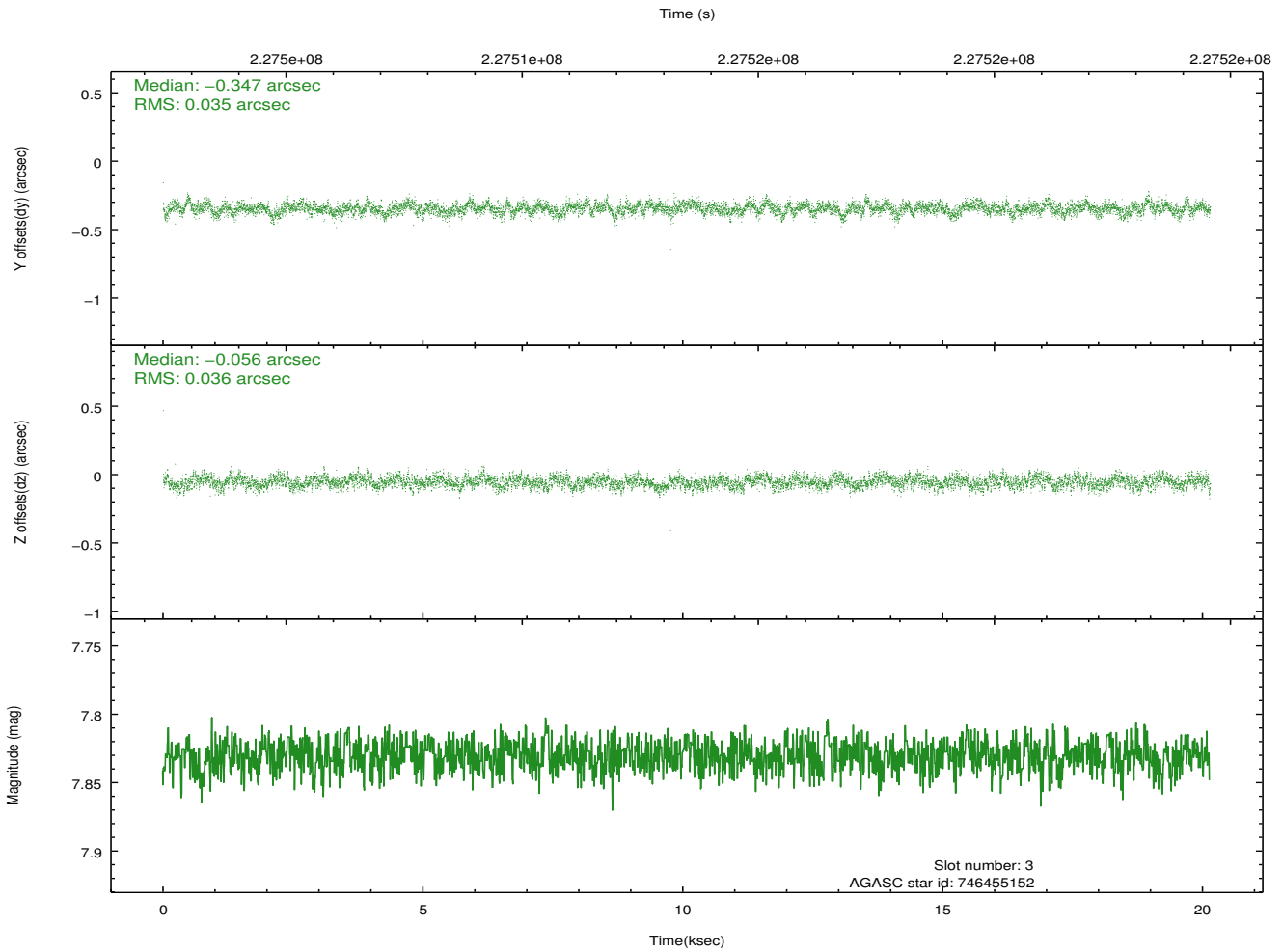
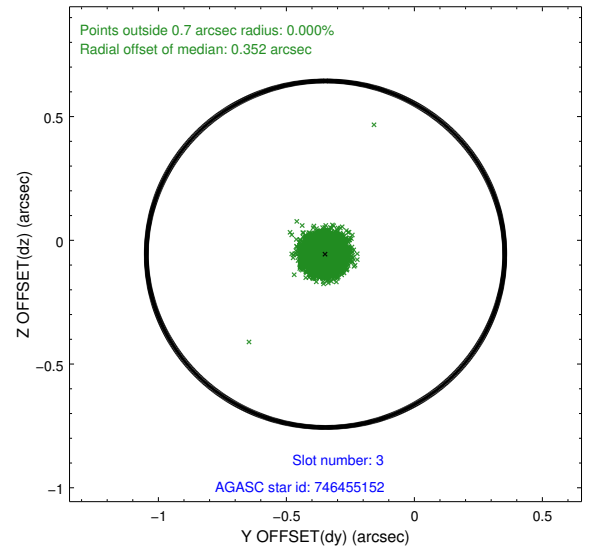
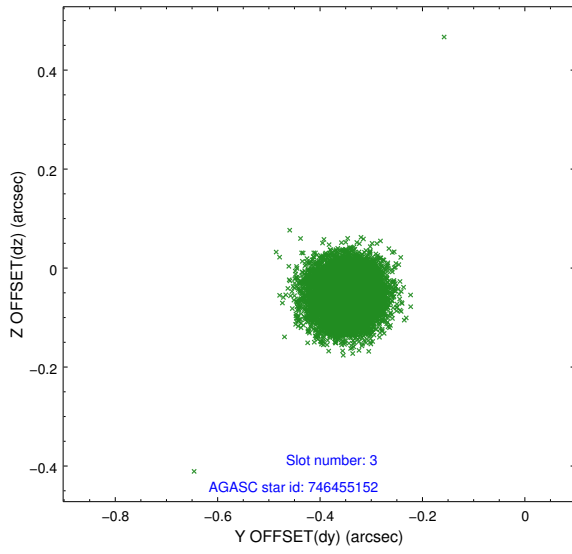


Slot Statistics

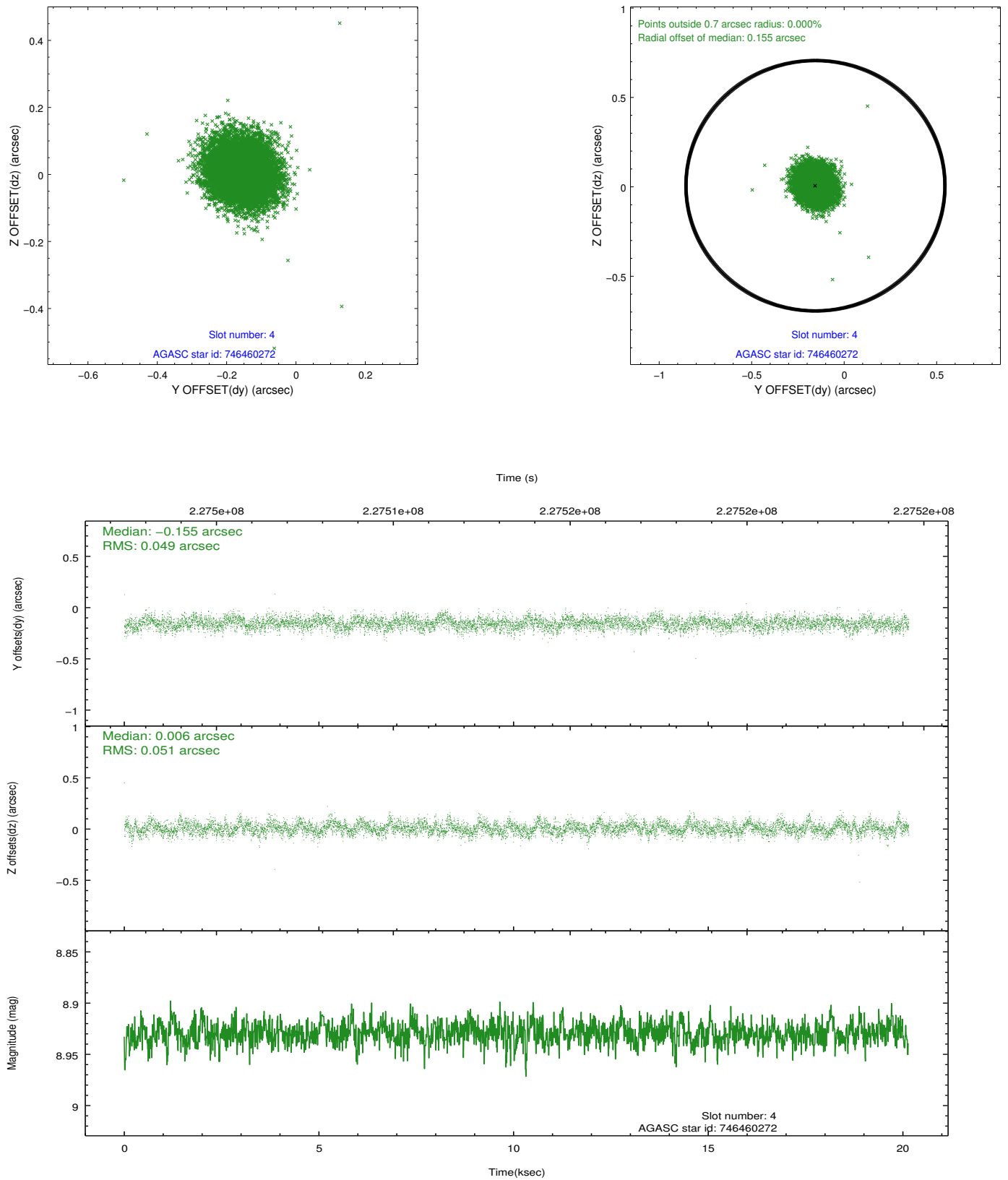
slot	status	id	mag	n_pts	med_dy	med_dz	dr1	dr2	ra	dec	mean_y	mean_z
0	FID	HRC-S-1	6.99	4914	0.132	-0.173	0.021	0.055	0.000000	0.000000	-1161.85	-458.13
1	FID	HRC-S-2	6.98	4914	0.167	-0.117	0.007	0.012	0.000000	0.000000	1237.63	-450.83
2	FID	HRC-S-3	7.00	4915	0.090	-0.011	0.022	0.061	0.000000	0.000000	-1164.35	571.45
3	GUIDE	746455152	7.83	9827	-0.347	-0.056	0.053	0.085	278.447893	-9.976732	2196.03	-186.19
4	GUIDE	746460272	8.93	9824	-0.155	0.006	0.075	0.123	278.847488	-10.152127	1539.94	-1591.13
5	GUIDE	746462392	8.54	9823	0.139	0.122	0.087	0.141	279.038421	-10.890715	-1132.08	-2217.61
6	GUIDE	746462456	8.39	9827	0.127	-0.127	0.069	0.116	278.652171	-10.530173	190.94	-875.32
7	GUIDE	746462680	9.01	9822	0.238	0.055	0.081	0.133	278.660755	-10.782756	-717.80	-889.01

2.4 Star Slots

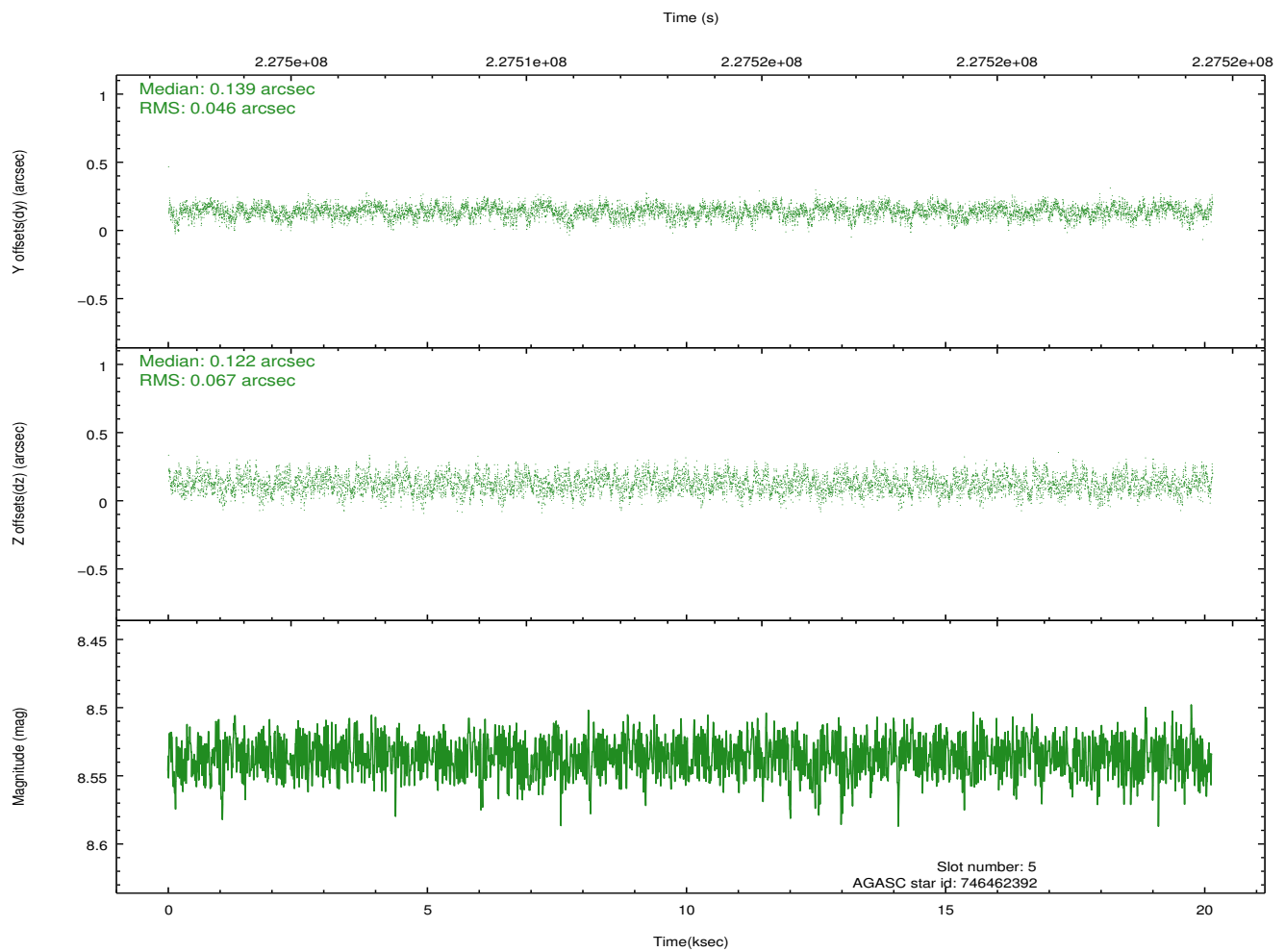
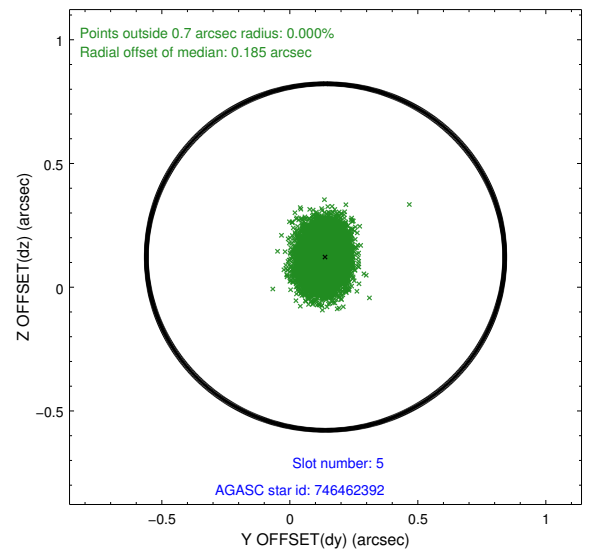
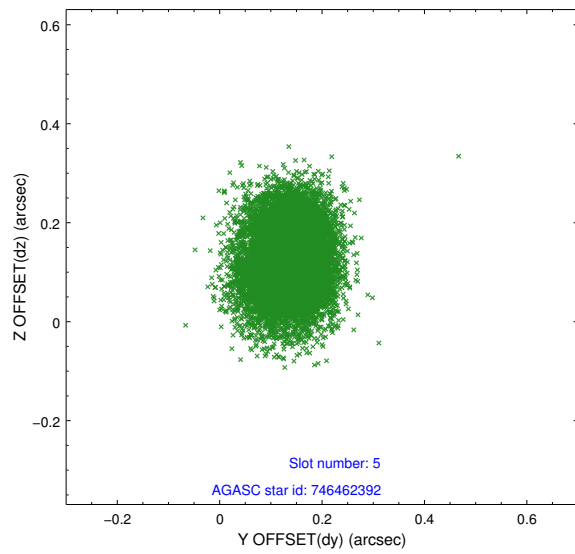
2.4.1 Slot 3



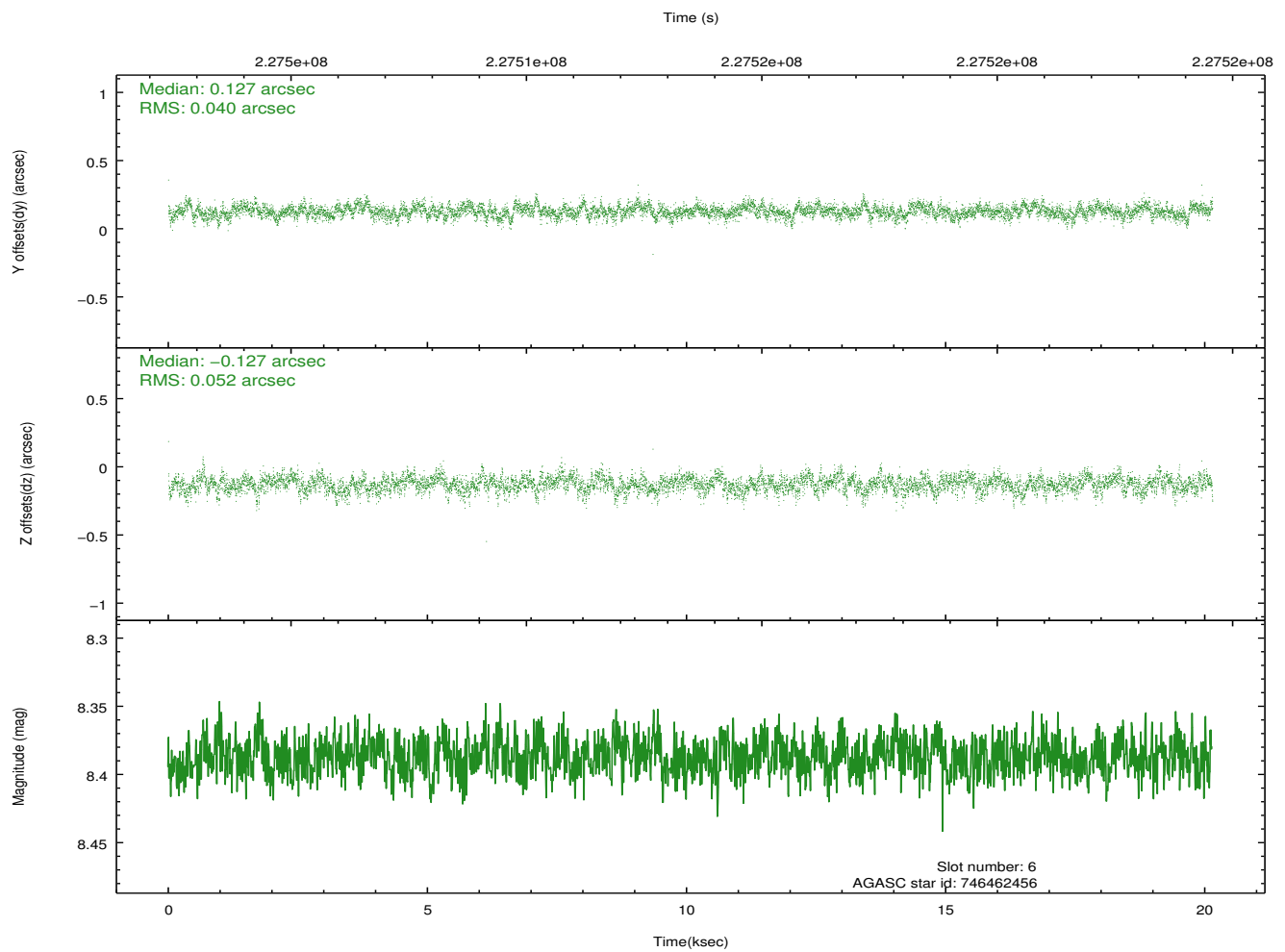
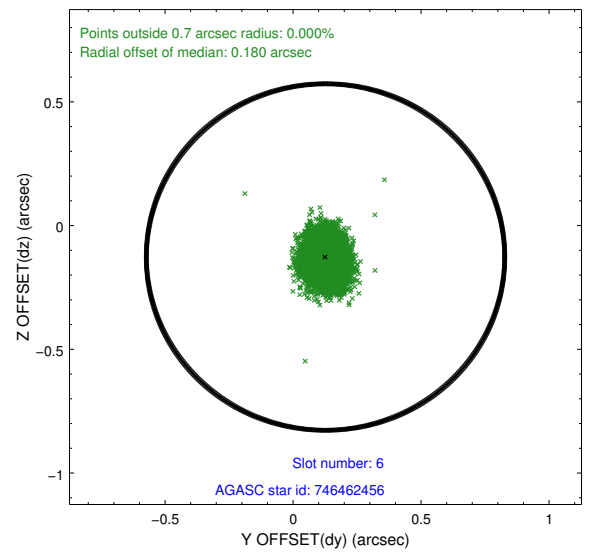
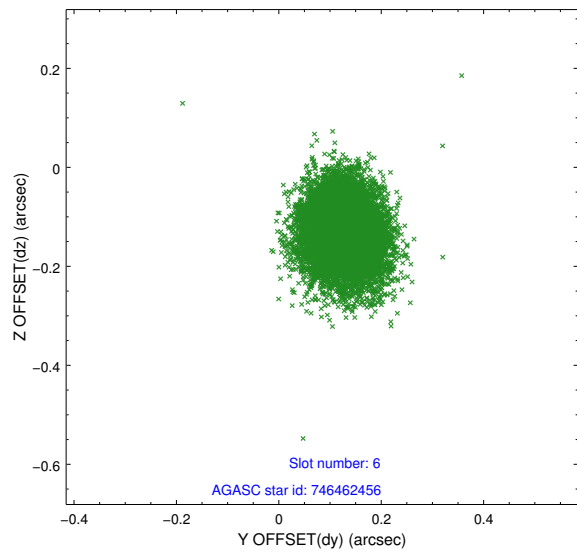
2.4.2 Slot 4



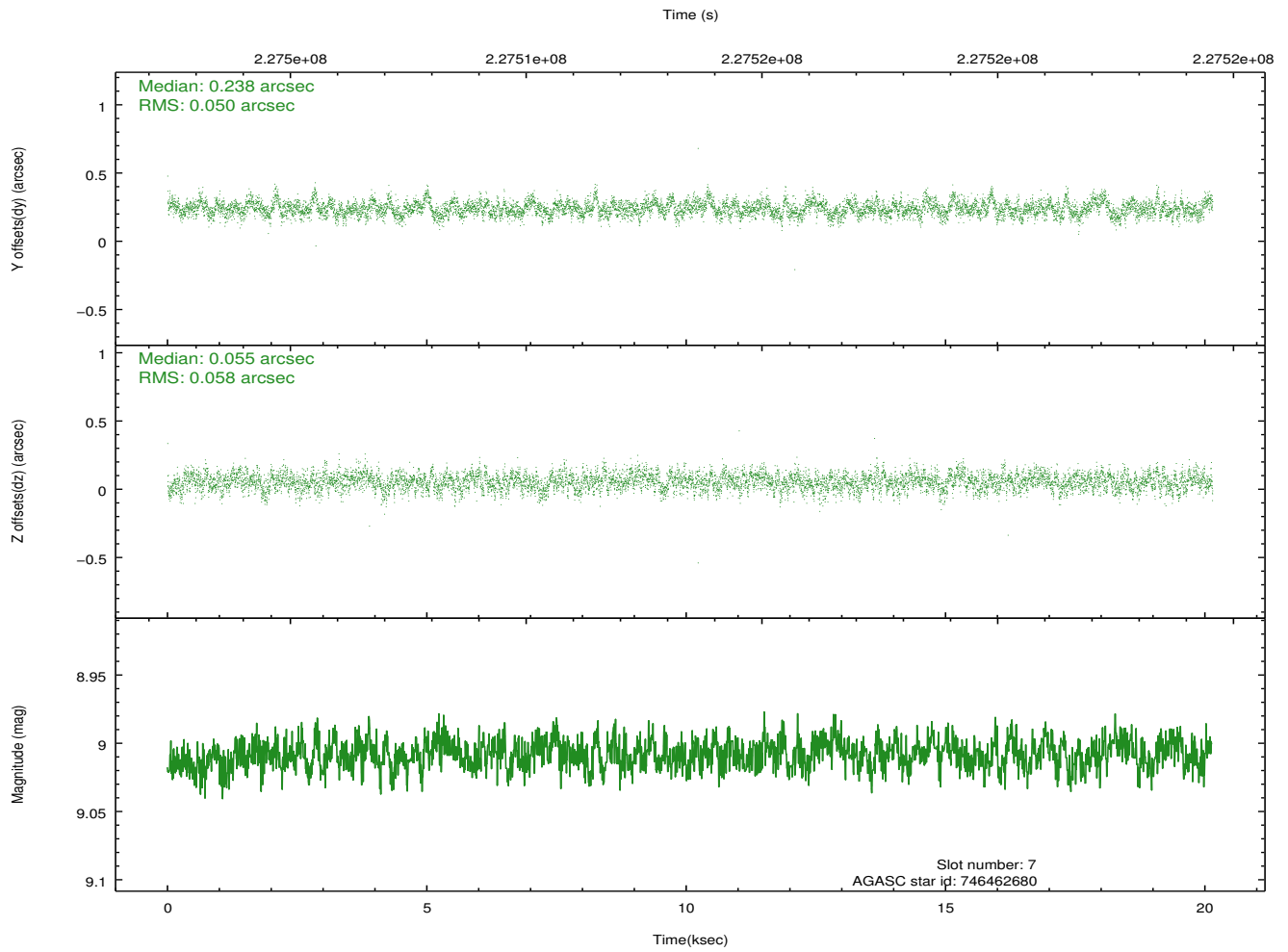
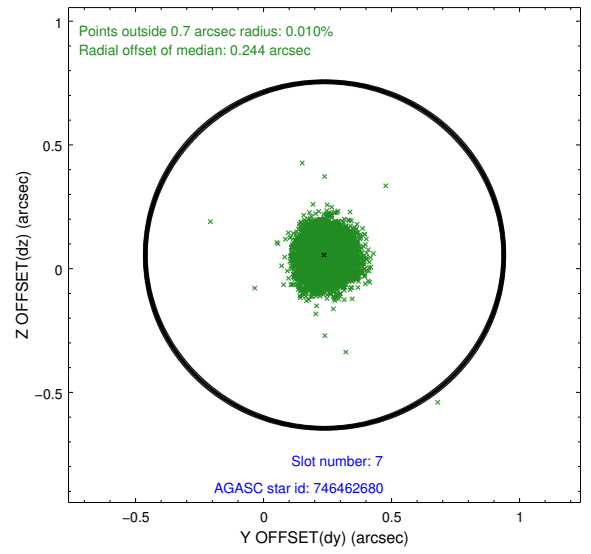
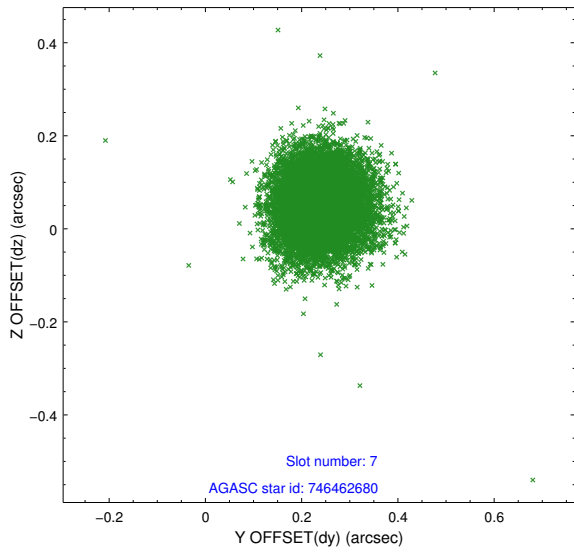
2.4.3 Slot 5



2.4.4 Slot 6

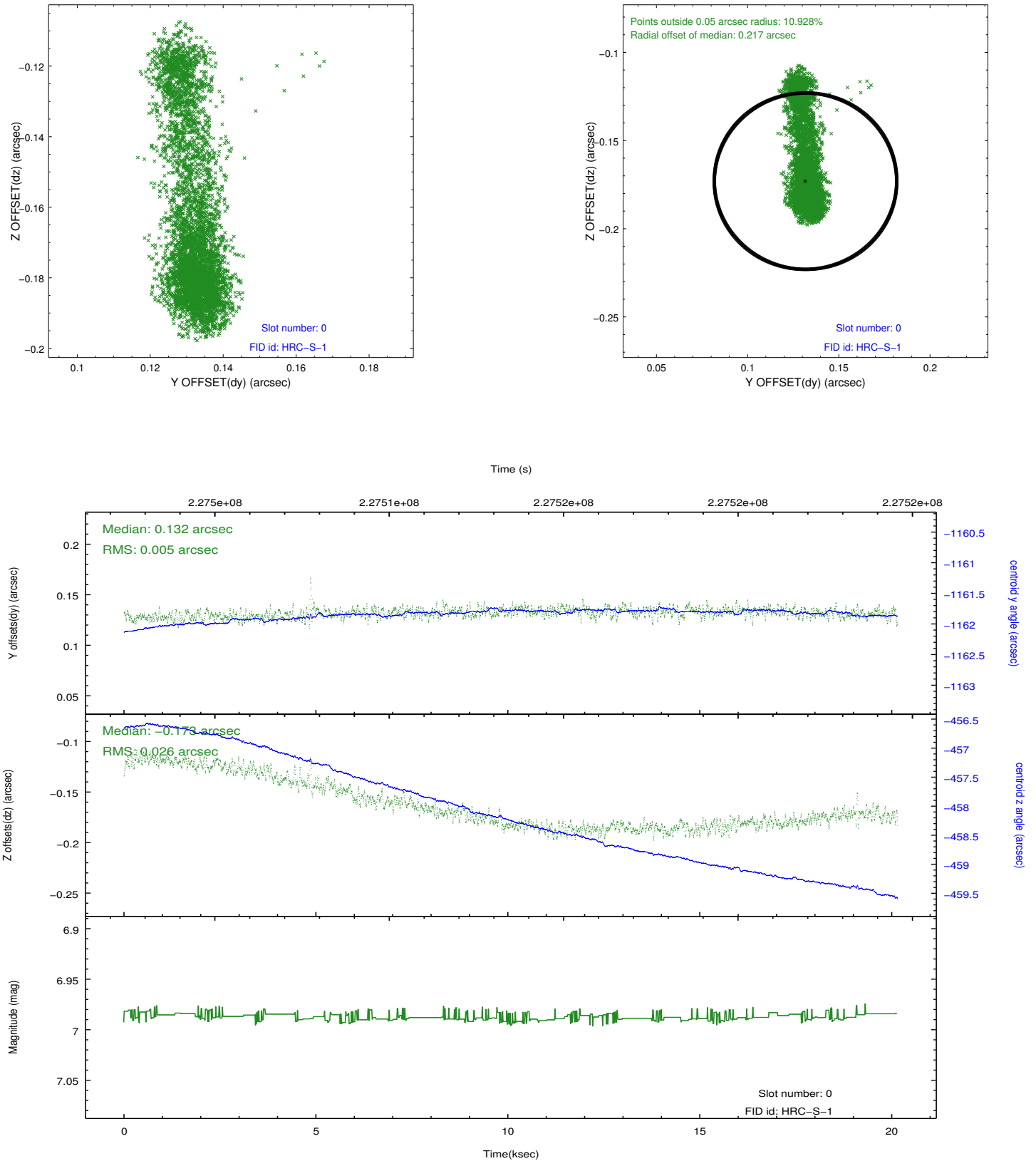


2.4.5 Slot 7

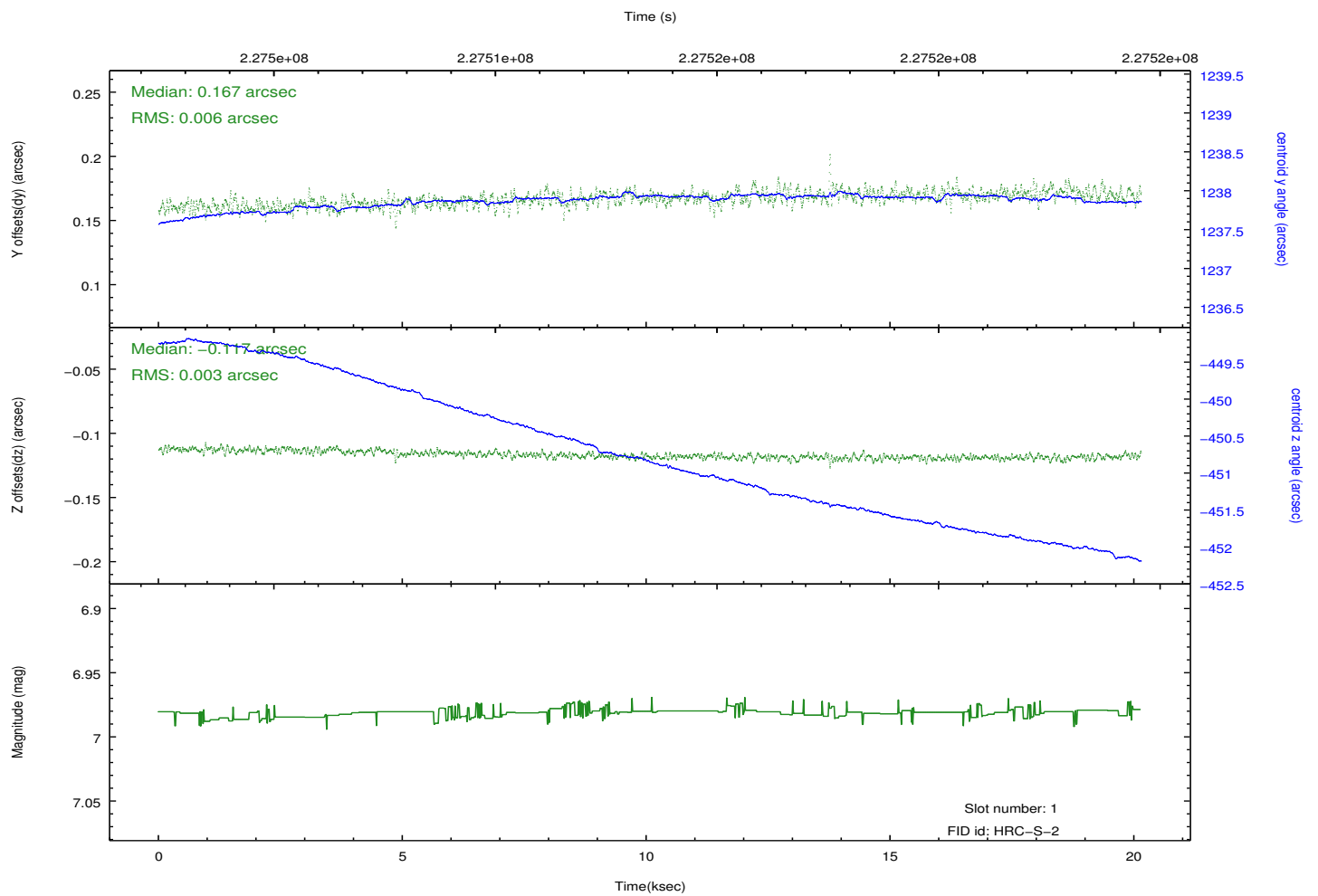
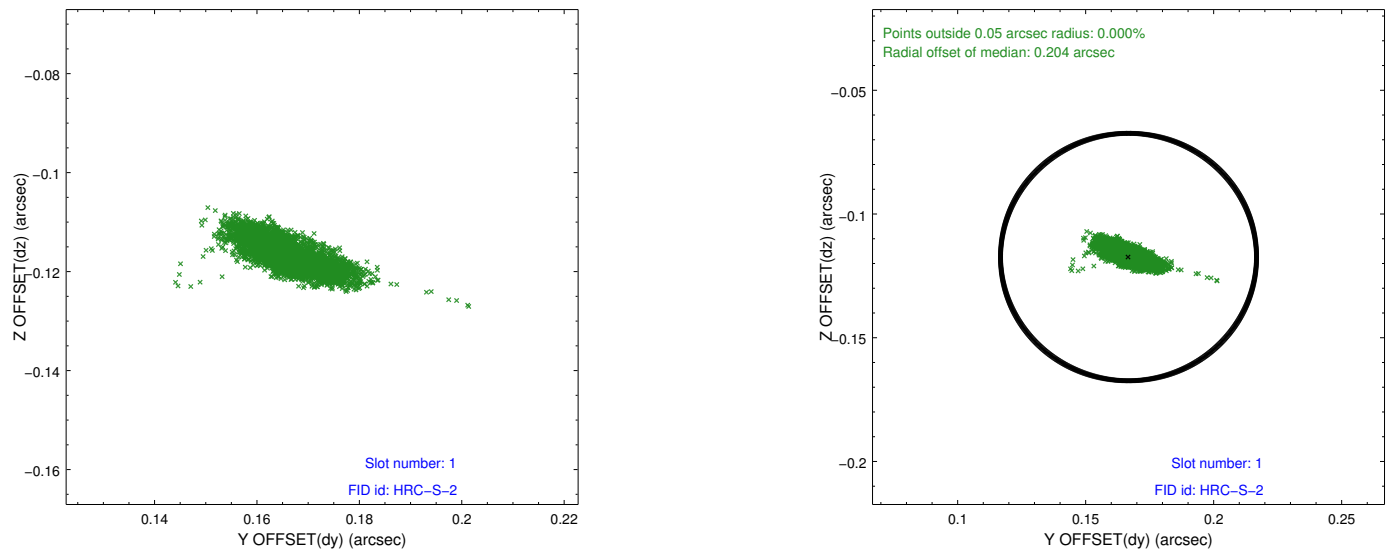


2.5 FID Slots

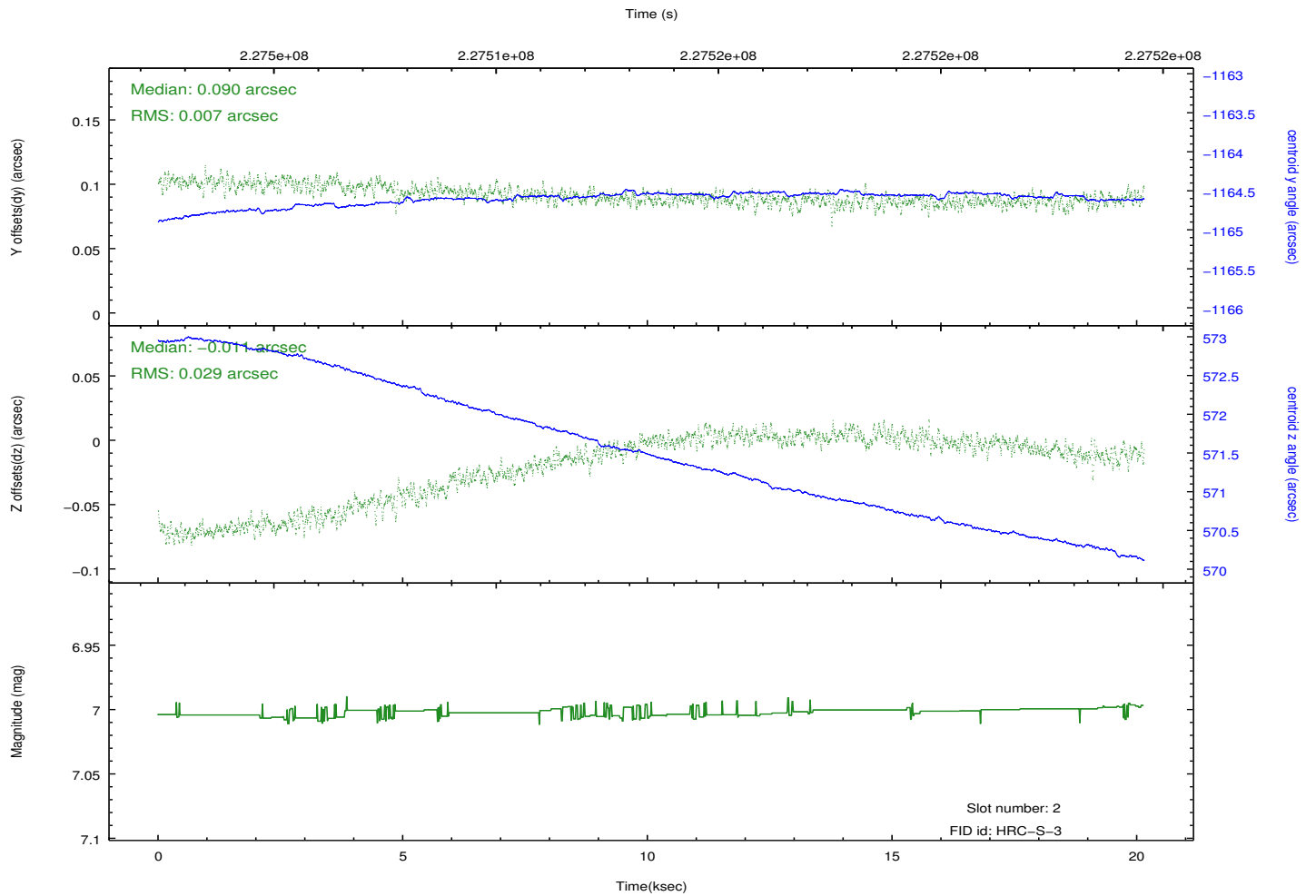
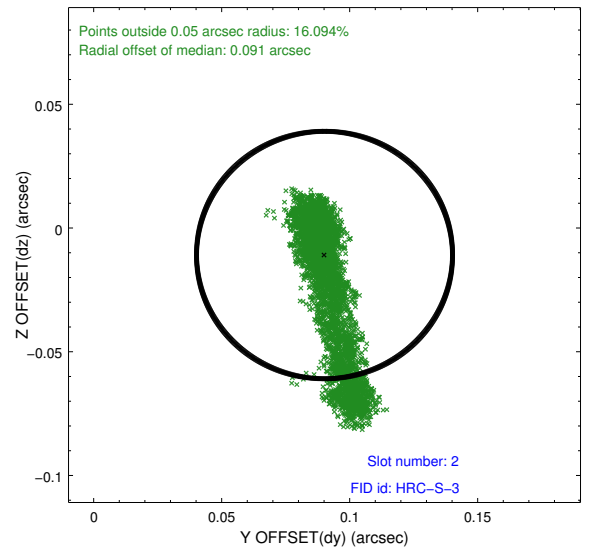
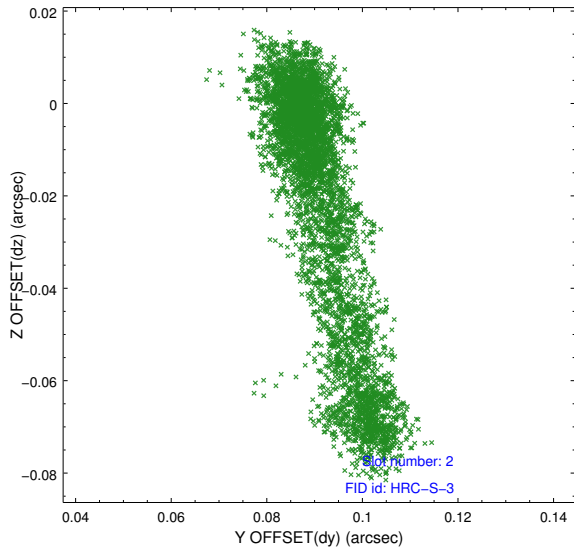
2.5.1 Slot 0



2.5.2 Slot 1



2.5.3 Slot 2



A Summary

A.1 Status

V&V Scientist	Beth Sundheim
V&V Date (YYYY-MM-DD)	2013.01.09
V&V Edition	1
V&V Disposition and Status	OK
V&V Charge Time	20.14663

A.2 Comments

Window preference met.