

V&V Reference Report

L2 ASCDS Version : 7.6.9

Observation 61453 - L2 Version 001
Chandra X-Ray Center

L2 Processing Date : Jan 5 2007

Contents

1	Front	2
2	OBI	3
2.1	OBI	3
2.1.1	Images	3
2.1.2	Bias	3
2.1.3	Parameters	4
2.1.4	Events	4
2.2	Compared Parameters	5
2.3	Aspect	6
2.4	Star Slots	8
2.5	FID Slots	8
A	Summary	9
A.1	Status	9
A.2	Comments	9

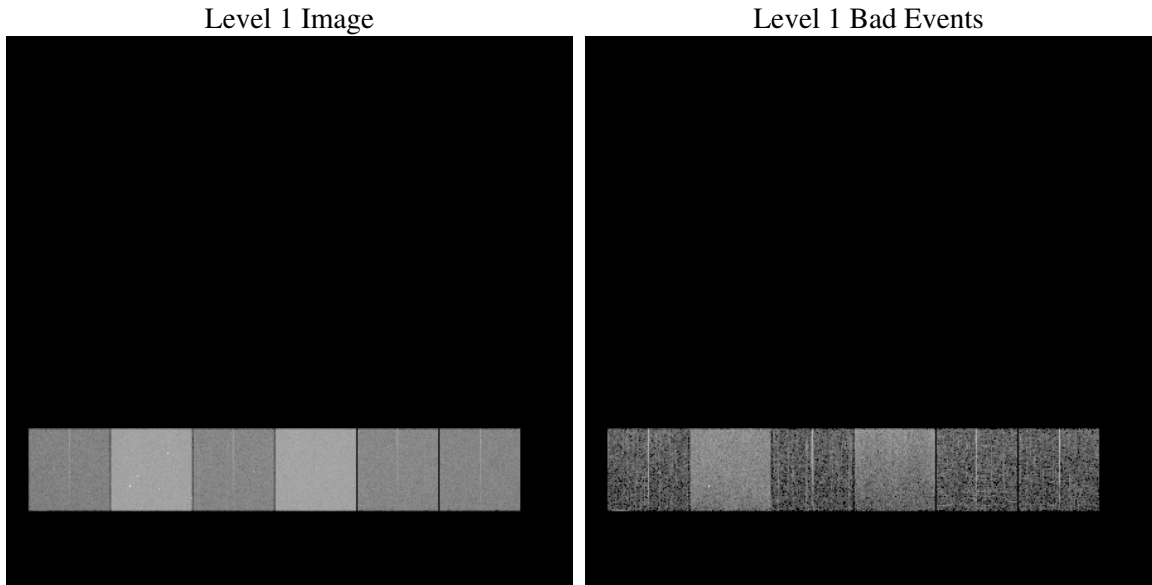
1 Front

seq_num	
obs_id	61453
title	ACIS-456789 diagnostics
observer	CHANDRA engineering request/realtime commanding
object	
dtcycle	0
cycle	P
ra_targ	0.0
dec_targ	0.0
ra_nom	136.9983438552
dec_nom	40.028622152898
roll_nom	59.813386372248
revision	2
ontime	5809.3193087131
livetime	5735.758209674
ontime4	2312.4111759812
ontime5	6217.7202928513
ontime6	2442.0118054897
ontime7	5809.3193087131
ontime8	2497.1912561804
ontime9	2432.1654857695
l2events	1204753

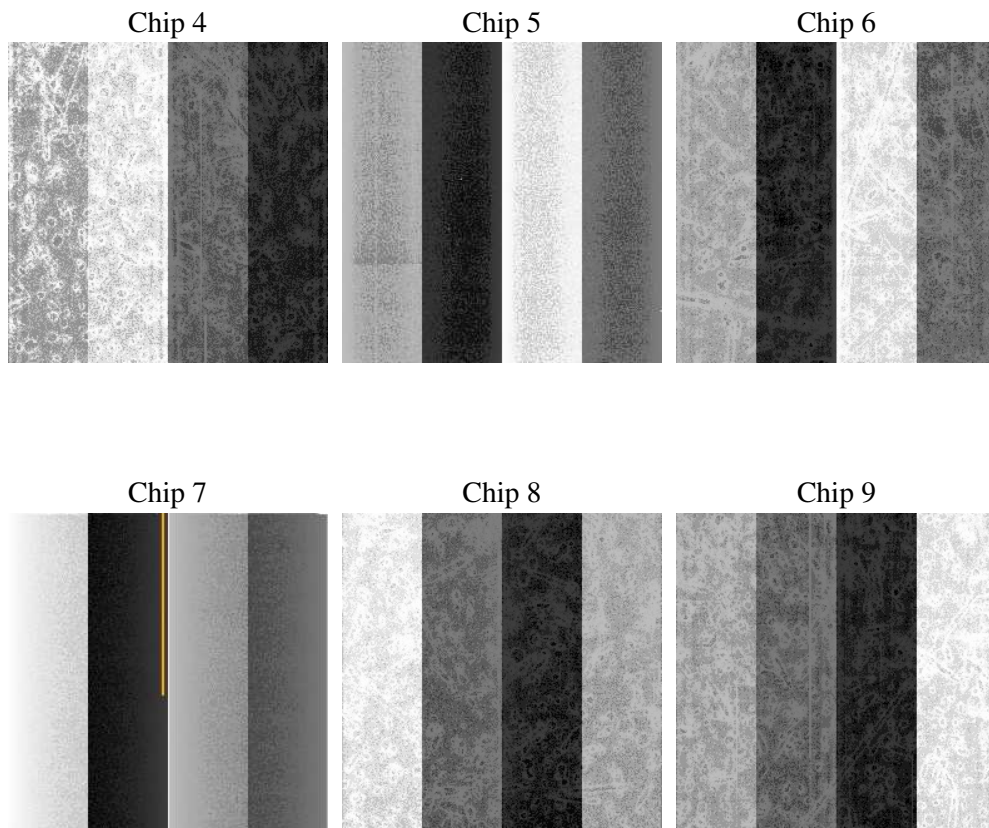
2 OBI

2.1 OBI

2.1.1 Images



2.1.2 Bias



2.1.3 Parameters

obi_num	1
ascdsver	7.6.9
caldbver	3.2.4
date	2007-01-05T17:07:44
revision	2

sched_exp_time	0.0
ontime	5811.13132447
ontime4	2314.1000717431
ontime5	6219.491268605
ontime6	2443.7417412549
ontime7	5811.13132447
ontime8	2498.8391119391
ontime9	2434.0185415298
l1events	1426334

2.1.4 Events

	ccd 4	ccd 5	ccd 6	ccd 7	ccd 8	ccd 9
level 1 events	152178	375810	171641	385571	176639	164495
rejected events	19262	51437	19190	38883	20150	18335
rejected %	12%	13%	11%	10%	11%	11%

	ccd 4	ccd 5	ccd 6	ccd 7	ccd 8	ccd 9
grade 0 events	75438	40628	83299	66411	86256	79929
	49%	10%	48%	17%	48%	48%
grade 1 events	382	116	415	148	405	415
	0%	0%	0%	0%	0%	0%
grade 2 events	23599	155657	26582	102760	27532	25796
	15%	41%	15%	26%	15%	15%
grade 3 events	8131	11161	9427	26896	9861	9062
	5%	2%	5%	6%	5%	5%
grade 4 events	7998	11151	9325	26522	9929	9120
	5%	2%	5%	6%	5%	5%
grade 5 events	1250	6323	1355	5619	1521	1409
	0%	1%	0%	1%	0%	0%
grade 6 events	17946	105957	24027	124278	23120	22445
	11%	28%	13%	32%	13%	13%
grade 7 events	17434	44817	17211	32937	18015	16319
	11%	11%	10%	8%	10%	9%

2.2 Compared Parameters

Parameter	Planned	Actual	Parameter	Planned	Actual
Instrument	ACIS	ACIS	Obspar format version number	6	6
Detector	ACIS-456789	ACIS-456789	Obspar file type	PREDICTED	ACTUAL
Grating	NONE	NONE	Obspar update status	NONE	UPDATED
Data mode	FAINT	FAINT	On-chip summing requested	N	N
Observation mode	SECONDARY	SECONDARY	Subarray requested	NONE	NONE
Pointing RA	0	136.9983438551968	Alternating exposures requested	N	N
Pointing Dec	0	40.02862215289791	Primary exposure time	0.000000	3.2
Pointing Roll	0.0	59.81338637224762			
SIM focus pos (mm)	-0.684267	-0.6828225247311905			
SIM defocus (mm)	0	0.8505141146731063			
SIM translation stage pos (mm)	-190.132523	250.466033080201			
SIM translation stage offset (mm)	0	-0.01005468664627074			
Observation start time	118333510.528	118333509.75927			
Observation start date	2001-10-01T14:25:11	2001-10-01T14:25:09			
Observation end time	118370781.579	118370780.81075			
Observation end date	2001-10-02T00:46:22	2001-10-02T00:46:20			
Read mode	TIMED	TIMED			

2.3 Aspect

2.4 Star Slots

2.5 FID Slots

A Summary

A.1 Status

V&V Scientist	Beth Sundheim
V&V Date (YYYY-MM-DD)	2007.01.05
V&V Edition	1
V&V Disposition and Status	OK
V&V Charge Time	5.8093193

A.2 Comments