

# V&V Reference Report

## L2 ASCDS Version : 8.5.1.1

Observation 6263 - L2 Version 3  
Chandra X-Ray Center

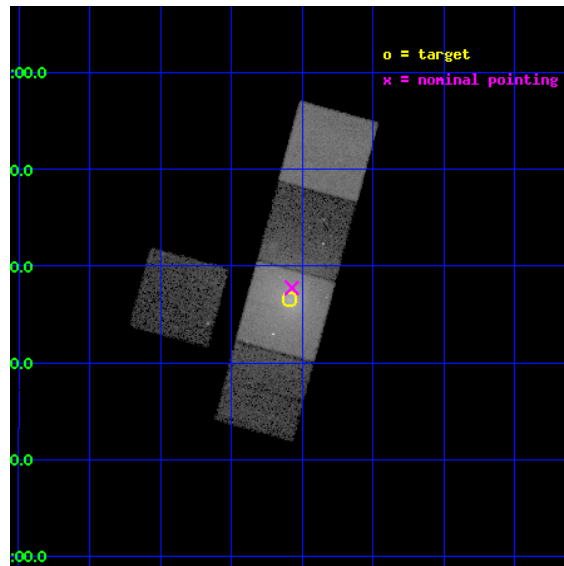
L2 Processing Date : Dec 20 2012

## Contents

<b>1</b>	<b>Front</b>	<b>2</b>
<b>2</b>	<b>OBI</b>	<b>3</b>
2.1	OBI . . . . .	3
2.1.1	Images . . . . .	3
2.1.2	Bias . . . . .	3
2.1.3	Parameters . . . . .	4
2.1.4	Events . . . . .	4
2.2	Compared Parameters . . . . .	5
2.3	Aspect . . . . .	6
2.4	Star Slots . . . . .	9
2.4.1	Slot 3 . . . . .	9
2.4.2	Slot 4 . . . . .	10
2.4.3	Slot 5 . . . . .	11
2.4.4	Slot 6 . . . . .	12
2.4.5	Slot 7 . . . . .	13
2.5	FID Slots . . . . .	14
2.5.1	Slot 0 . . . . .	14
2.5.2	Slot 1 . . . . .	15
2.5.3	Slot 2 . . . . .	16
<b>A</b>	<b>Summary</b>	<b>17</b>
A.1	Status . . . . .	17
A.2	Comments . . . . .	17

# 1 Front

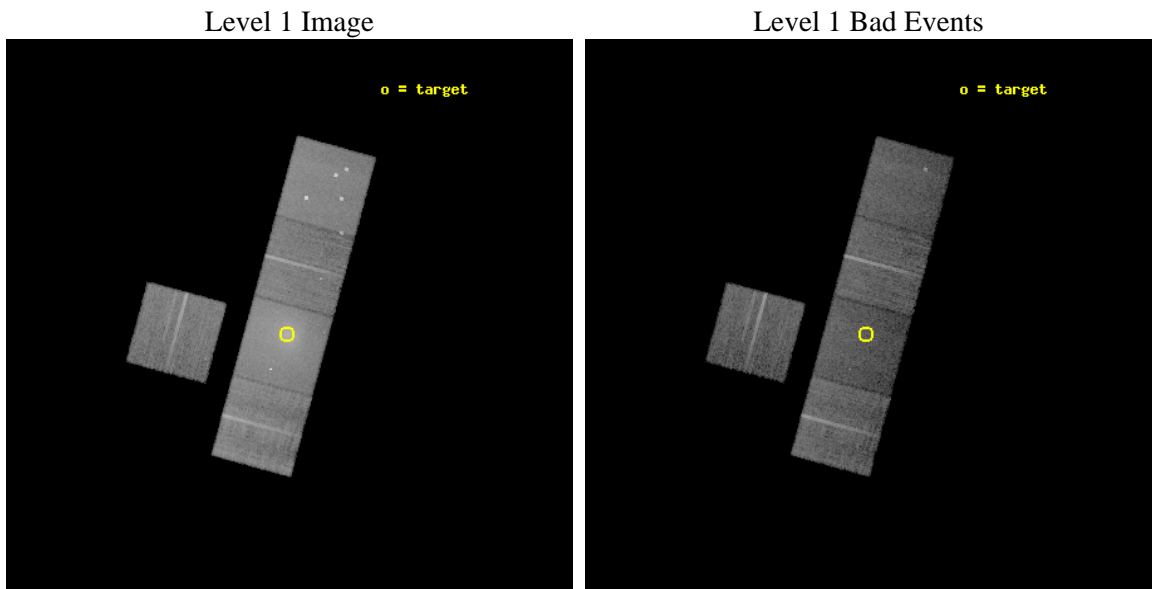
seq_num	800508	Sequence number
obs_id	6263	Observation id
title	The Interaction between Cluster Central Radio Sources and Cooling Flows	Proposal title
observer	Dr. CRAIG SARAZIN	Principal investigator
object	A2063	Source name
dtcycle	0	&#160
cycle	P	events from which exps? Prim/Second/Both
ra_targ	230.772083	Observer's specified target RA [deg]
dec_targ	8.608861	Observer's specified target Dec [deg]
ra_nom	230.76828462439	Nominal RA [deg]
dec_nom	8.6292990367447	Nominal Dec [deg]
roll_nom	105.15721532574	Nominal Roll [deg]
revision	3	Processing version of data
ontime	17000.399967283	Sum of GTIs [s]
livetime	16778.277226198	Livetime [s]
ontime3	17000.399967283	Sum of GTIs [s]
ontime5	17000.399967283	Sum of GTIs [s]
ontime6	17000.399967283	Sum of GTIs [s]
ontime7	17000.399967283	Sum of GTIs [s]
ontime8	17000.399967283	Sum of GTIs [s]
l2events	241774	Number of level 2 events



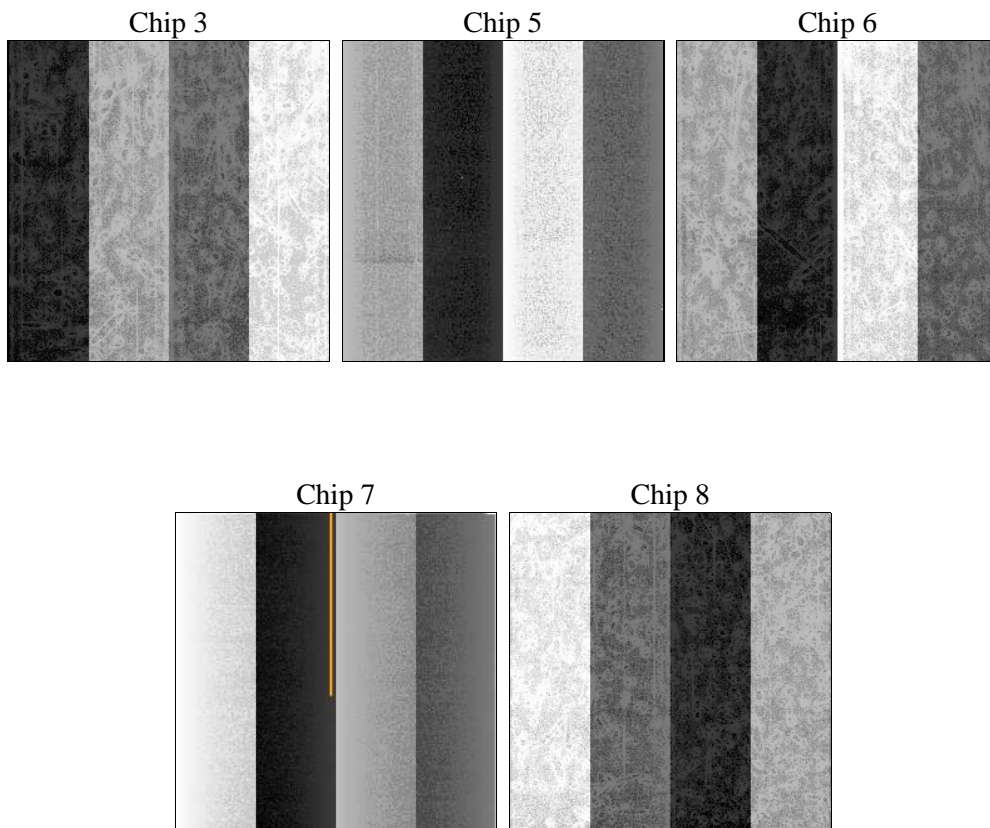
## 2 OBI

### 2.1 OBI

#### 2.1.1 Images



#### 2.1.2 Bias



### 2.1.3 Parameters

obi_num	0	Obi number	sched_exp_time	17000.000000	[s] Scheduled observation exposure time
ascdsver	8.5.1.1	Processing system revision	ontime	17000.399967283	Sum of GTIs [s]
caldbver	4.5.5	&#160	ontime3	17000.399967283	Sum of GTIs [s]
date	2012-12-21T02:56:39	Date and time of file creation	ontime5	17000.399967283	Sum of GTIs [s]
revision	3	Processing version of data	ontime6	17000.399967283	Sum of GTIs [s]
			ontime7	17000.399967283	Sum of GTIs [s]
			ontime8	17000.399967283	Sum of GTIs [s]
			l1events	700609	Number of level 1 events

### 2.1.4 Events

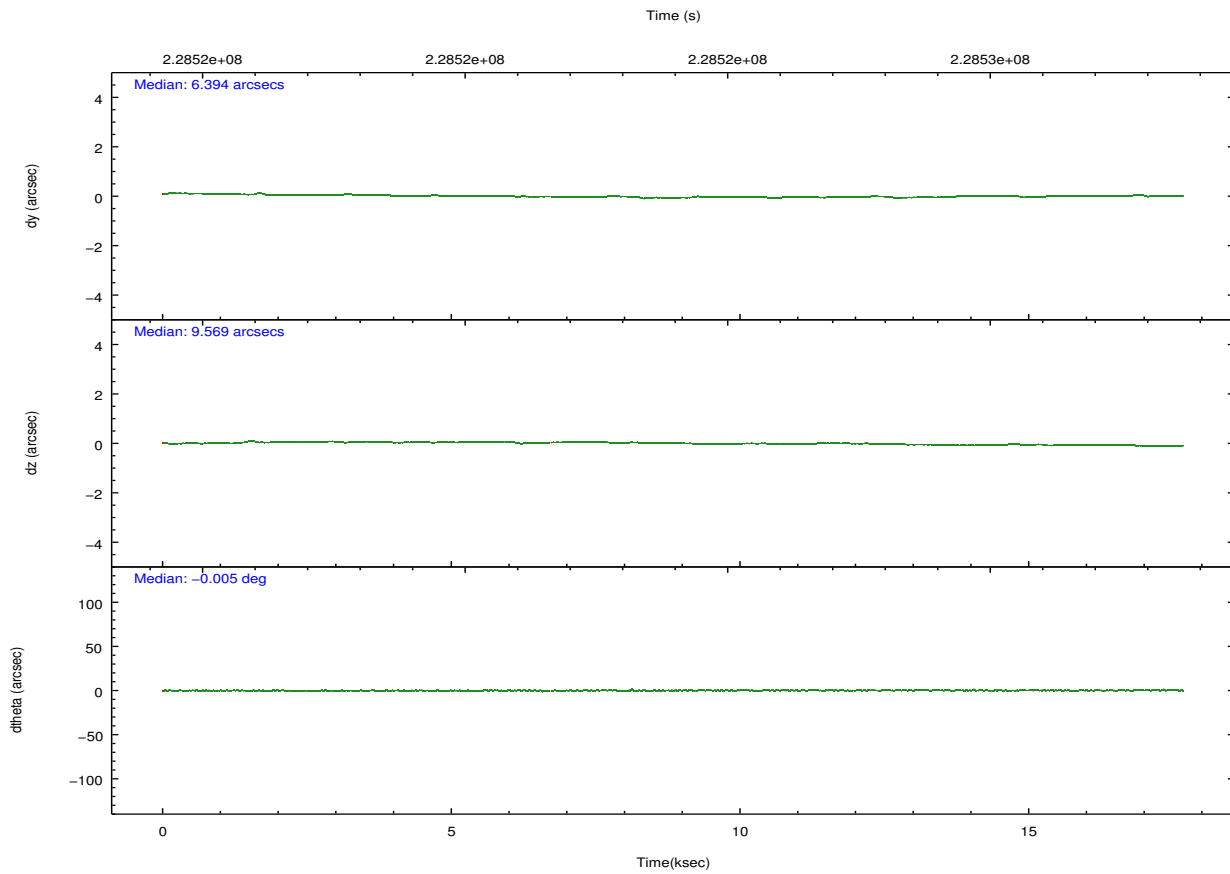
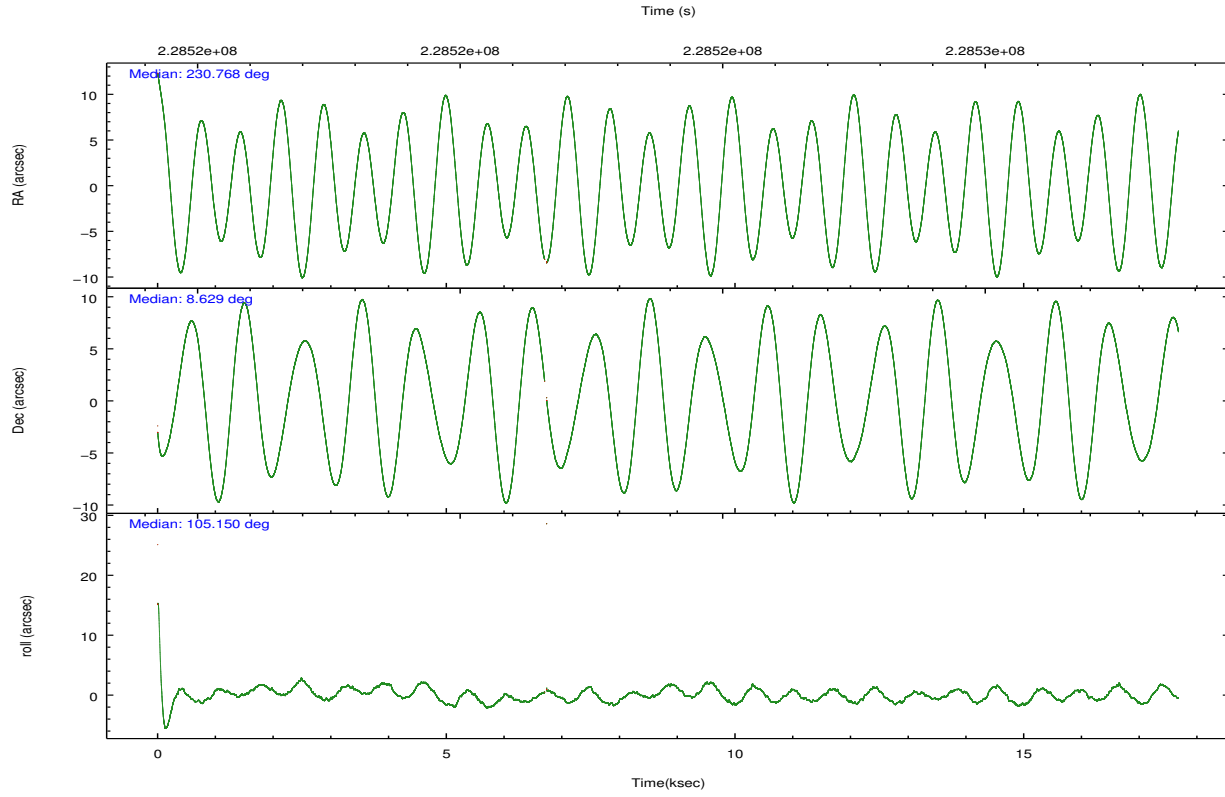
	ccd 3	ccd 5	ccd 6	ccd 7	ccd 8
level 1 events	103277	153985	114002	195967	133378
rejected events	91319	72631	92369	64199	99678
rejected %	88%	47%	81%	32%	74%

	ccd 3	ccd 5	ccd 6	ccd 7	ccd 8
grade 0 events	5273	17419	12823	29664	12054
	5%	11%	11%	15%	9%
grade 1 events	62	676	71	139	103
	0%	0%	0%	0%	0%
grade 2 events	2322	21057	3377	31841	7198
	2%	13%	2%	16%	5%
grade 3 events	1249	3395	1498	14373	3378
	1%	2%	1%	7%	2%
grade 4 events	1109	3313	1486	14013	3111
	1%	2%	1%	7%	2%
grade 5 events	4124	11459	4272	12881	6081
	3%	7%	3%	6%	4%
grade 6 events	2033	36376	2511	42175	8072
	1%	23%	2%	21%	6%
grade 7 events	87105	60290	87964	50881	93381
	84%	39%	77%	25%	70%

## 2.2 Compared Parameters

Parameter	Planned	Actual	Parameter	Planned	Actual
Instrument	ACIS	ACIS	Obspar format version number	7	7
Detector	ACIS-35678	ACIS-35678	Obspar file type	PREDICTED	ACTUAL
Grating	NONE	NONE	Obspar update status	NONE	UPDATED
Data mode	VFAINT	VFAINT	Number of optional ACIS chips dropped	0	0
Observation mode	POINTING	POINTING	On-chip summing requested	N	N
[deg] Pointing RA	230.788090	230.7682846243855	Subarray requested	NONE	NONE
[deg] Pointing Dec	8.610335	8.629299036744658	Alternating exposures requested	N	N
[deg] Pointing Roll	104.997600	105.1572153257407	[s] Primary exposure time	0.000000	3.1
[mm] SIM focus pos	-0.684267	-0.6828225247311905			
[mm] SIM defocus	0	0.001444936568705701			
[mm] SIM translation stage pos	-190.132523	-190.1400660498719			
[mm] SIM translation stage offset	0	0.00754346686406393			
[s] Observation start time (MET)	228515801.184000	228514626.14282			
Observation start date	2005-03-29T20:35:37	2005-03-29T20:17:06			
[s] Observation end time (MET)	228532801.184000	228533250.39366			
Observation end date	2005-03-30T01:18:57	2005-03-30T01:27:30			
Read mode	TIMED	TIMED			

## 2.3 Aspect

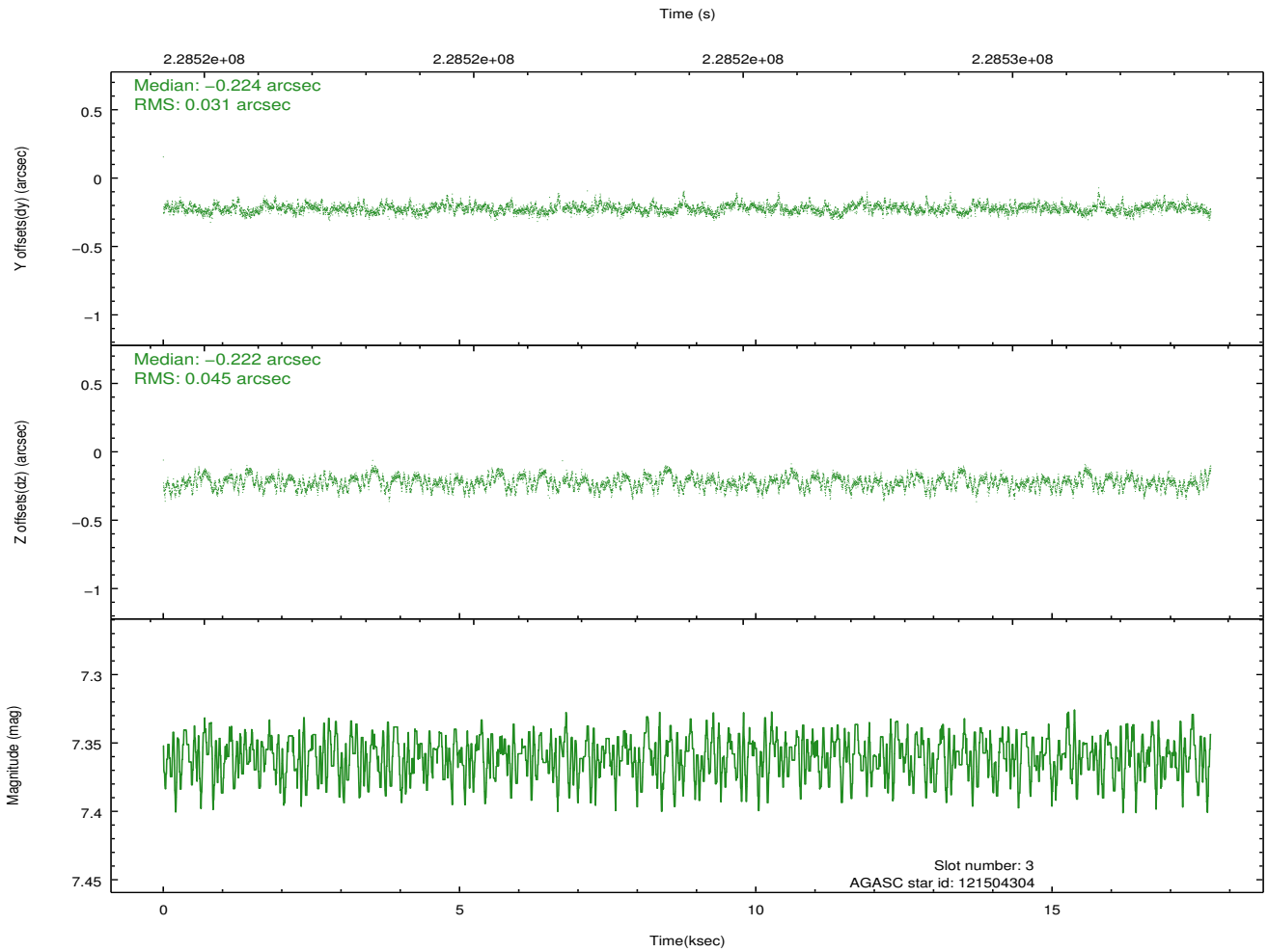
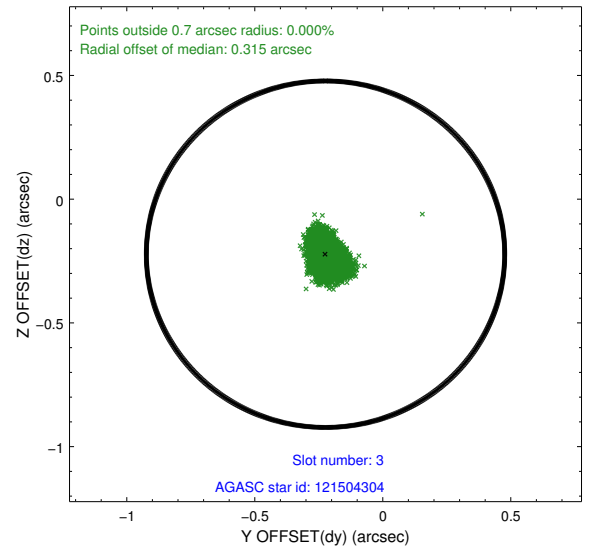
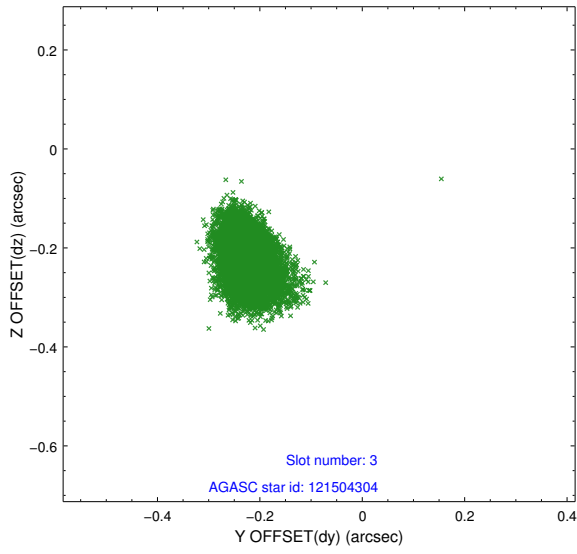


### Slot Statistics

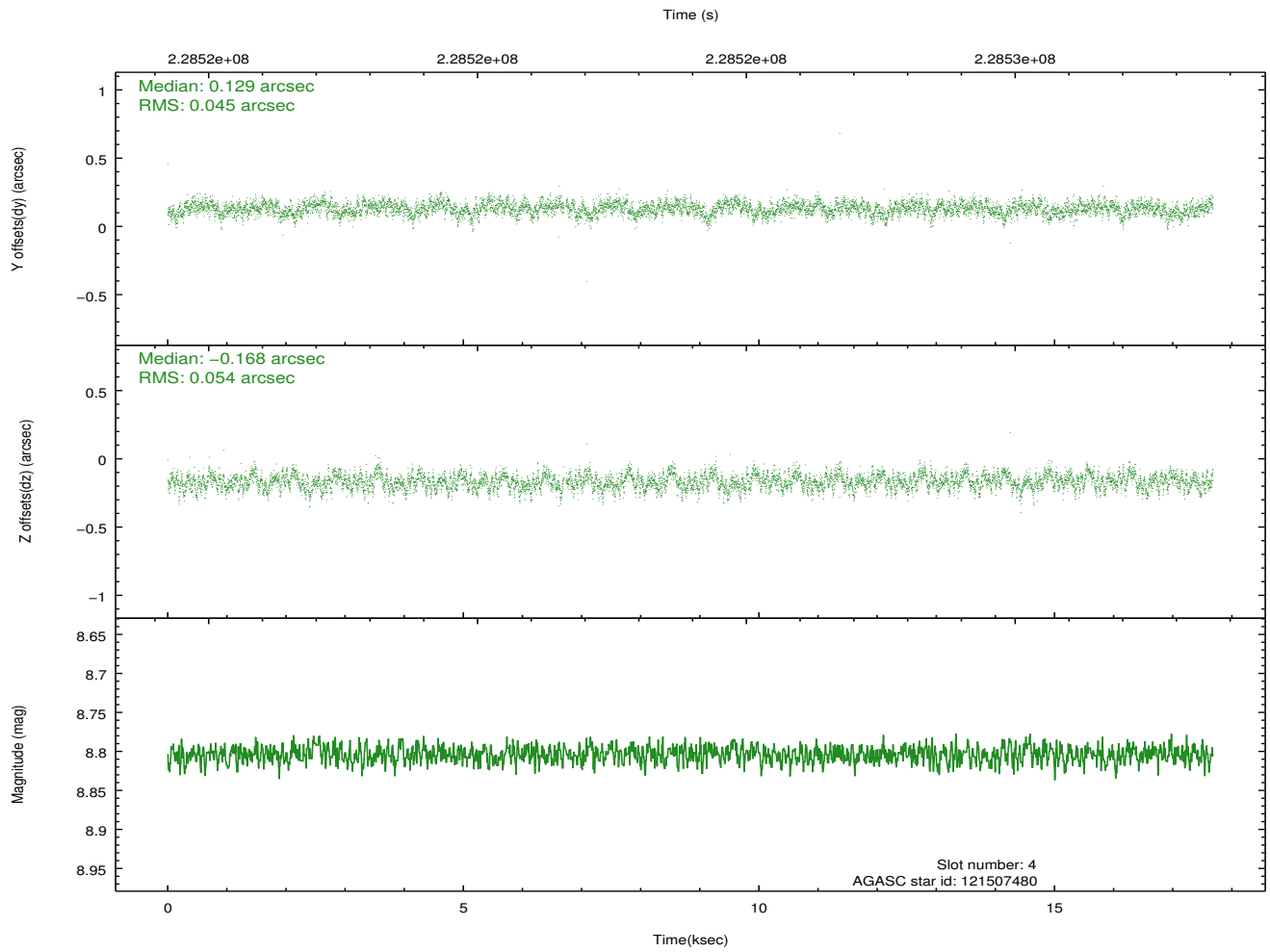
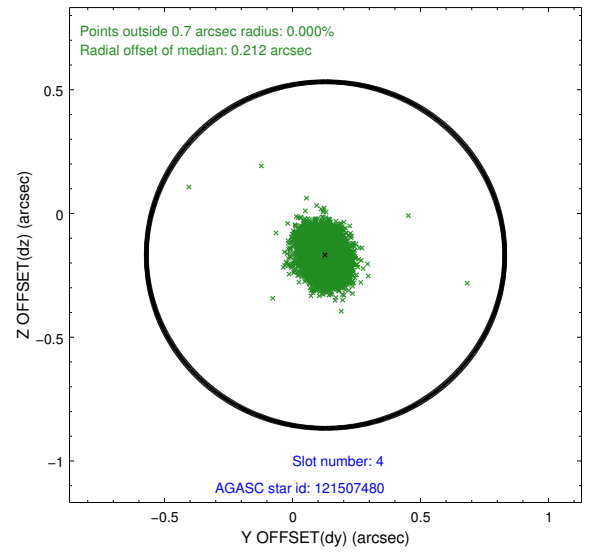
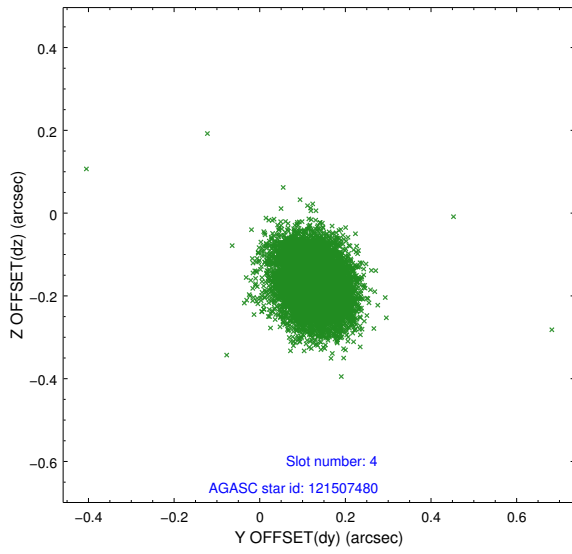
slot	status	id	mag	n_pts	med_dy	med_dz	dr1	dr2	ra	dec	mean_y	mean_z
0	FID	ACIS-S-2	7.10	4305	-0.059	-0.032	0.007	0.011	0.000000	0.000000	-759.16	-1730.84
1	FID	ACIS-S-4	7.21	4304	0.096	0.037	0.005	0.010	0.000000	0.000000	2154.13	177.51
2	FID	ACIS-S-5	7.23	4303	-0.068	0.004	0.007	0.011	0.000000	0.000000	-1811.74	171.36
3	GUIDE	121504304	7.36	8607	-0.224	-0.222	0.057	0.095	230.179446	8.913720	1616.54	1807.98
4	GUIDE	121507480	8.80	8598	0.129	-0.168	0.073	0.121	230.407322	8.449858	-206.28	1459.62
5	GUIDE	121507864	9.72	8600	0.155	0.058	0.108	0.175	231.118023	8.893781	682.92	-1397.29
6	GUIDE	121508304	7.54	8607	-0.298	0.081	0.062	0.096	231.074833	9.087473	1395.90	-1429.03
7	GUIDE	121506400	9.07	8605	0.241	0.248	0.085	0.140	231.447386	8.409178	-1304.40	-2081.10

## 2.4 Star Slots

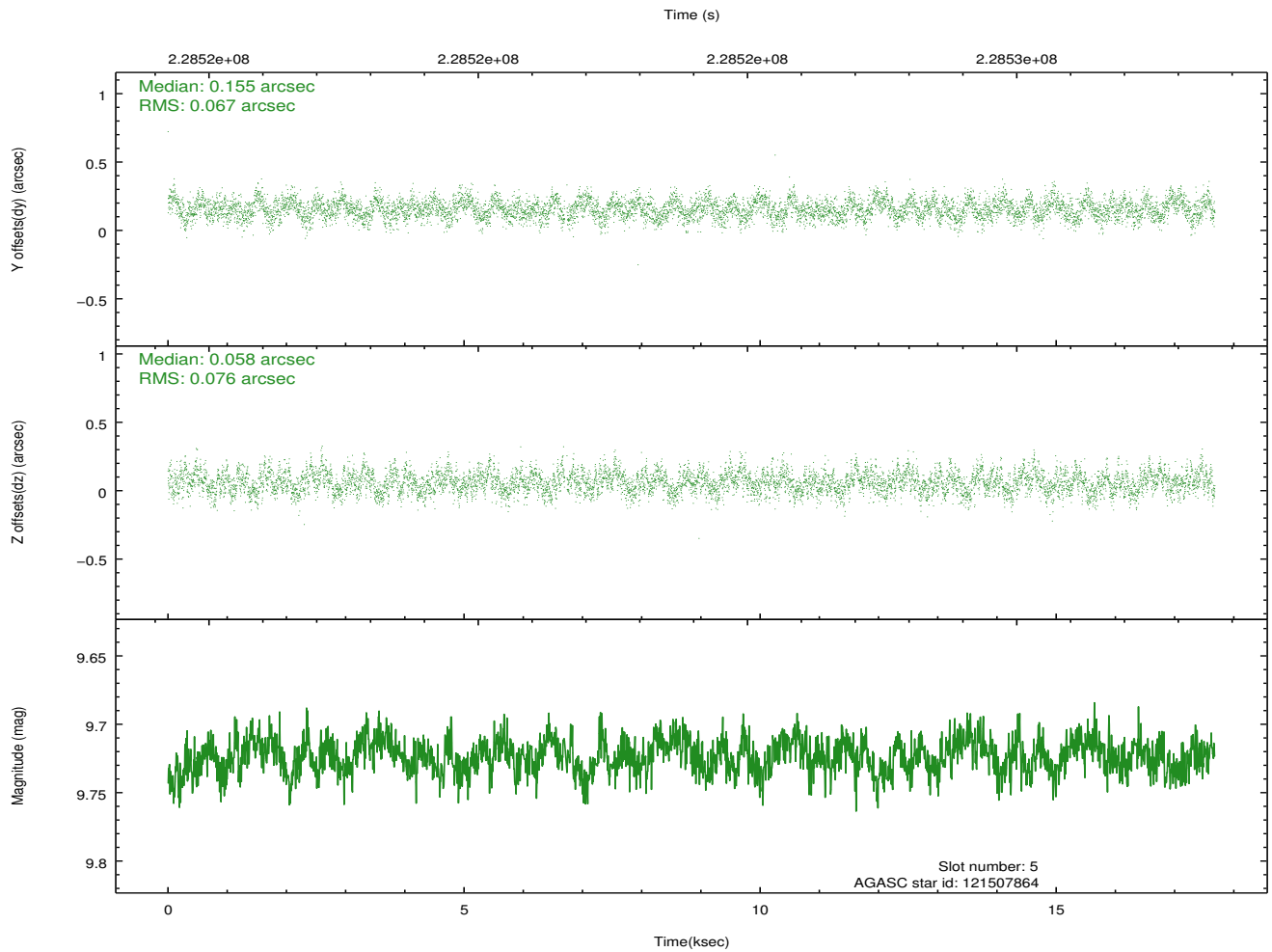
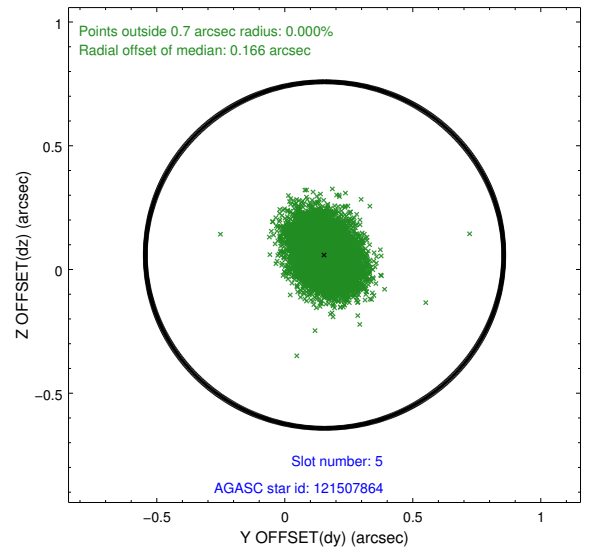
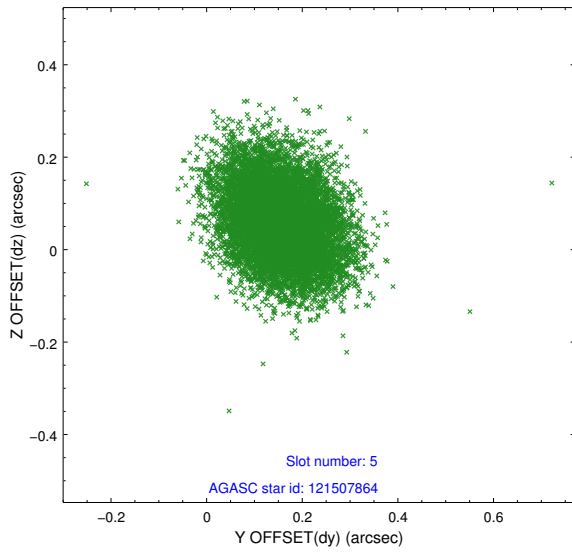
### 2.4.1 Slot 3



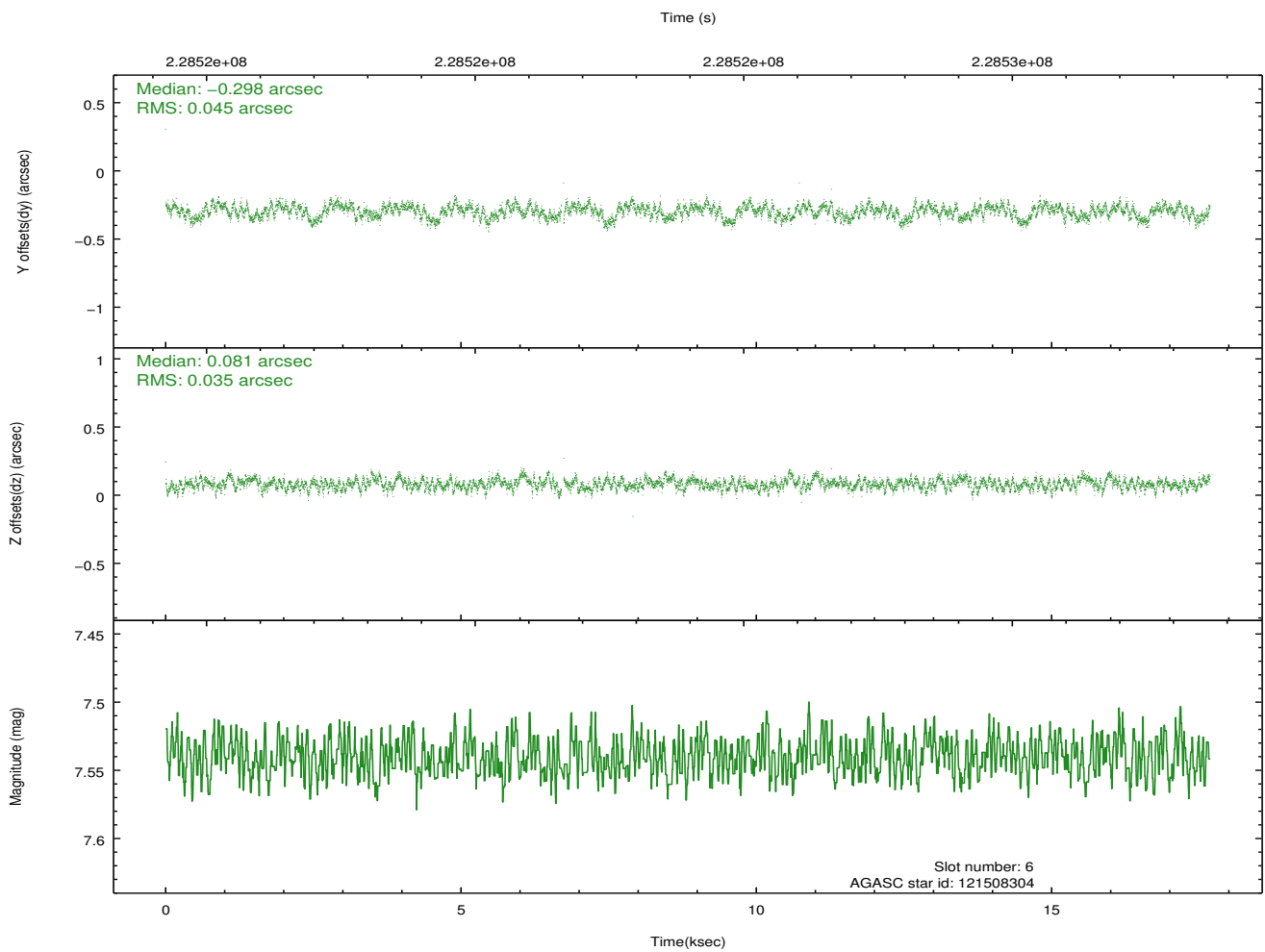
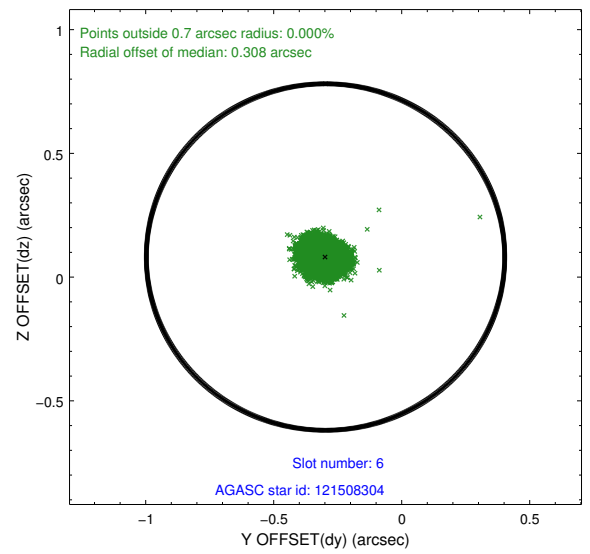
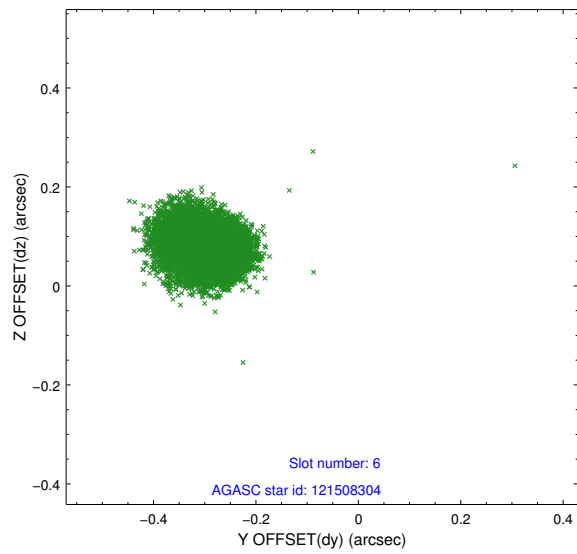
## 2.4.2 Slot 4



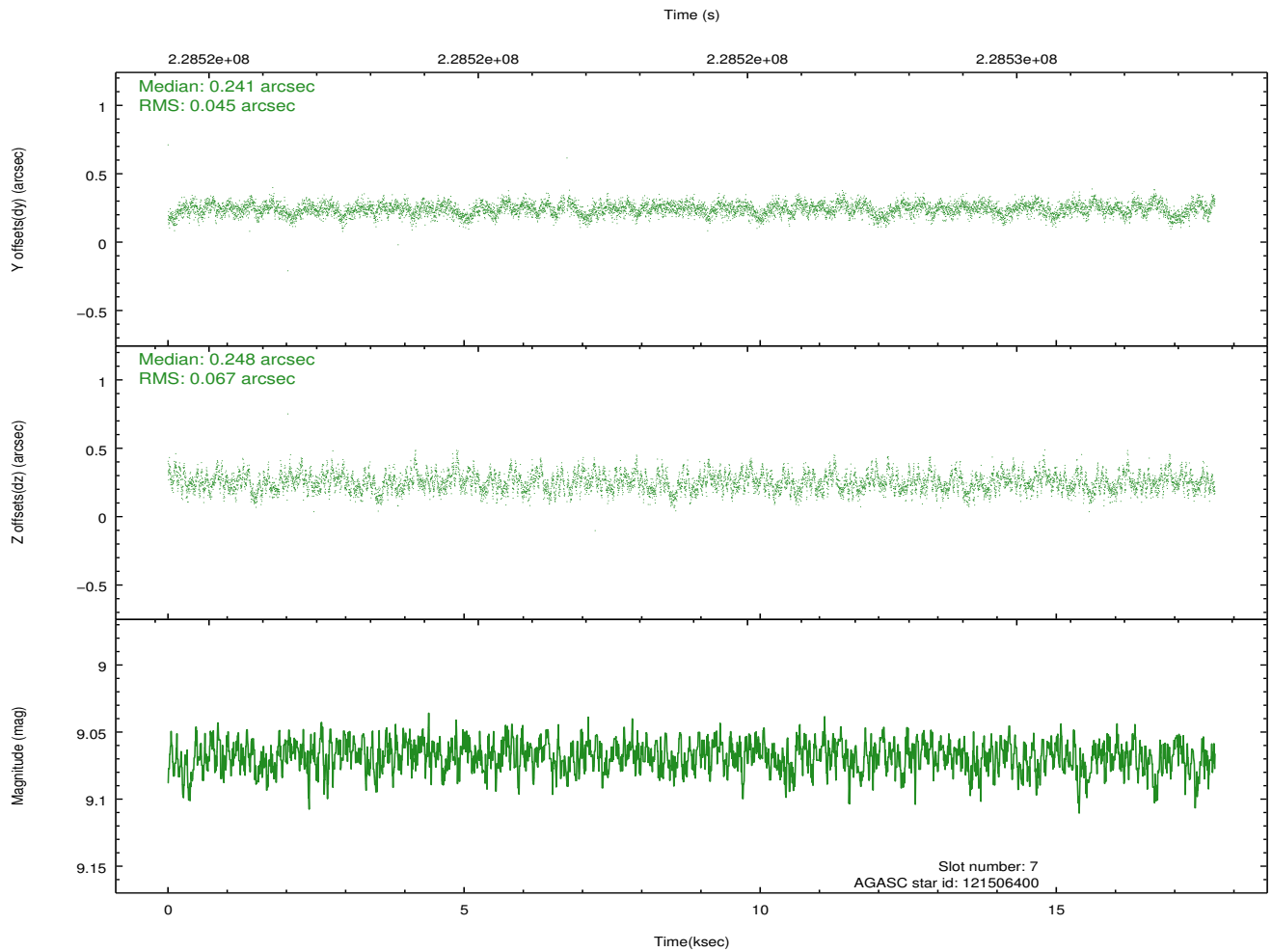
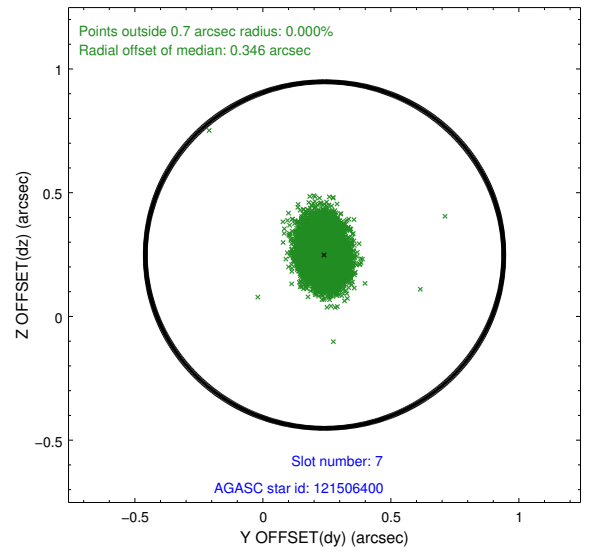
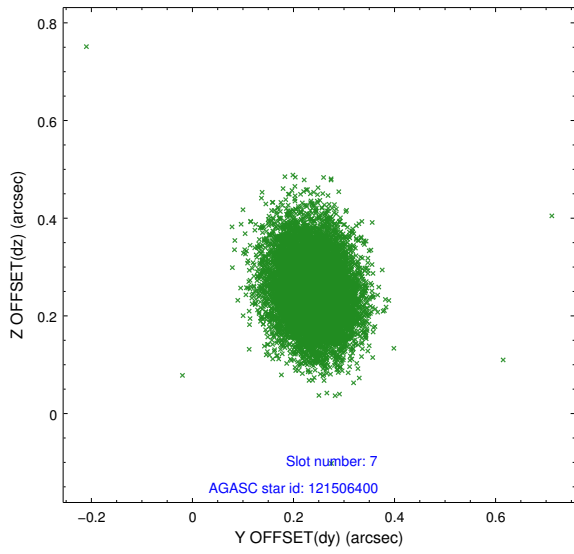
### 2.4.3 Slot 5



## 2.4.4 Slot 6

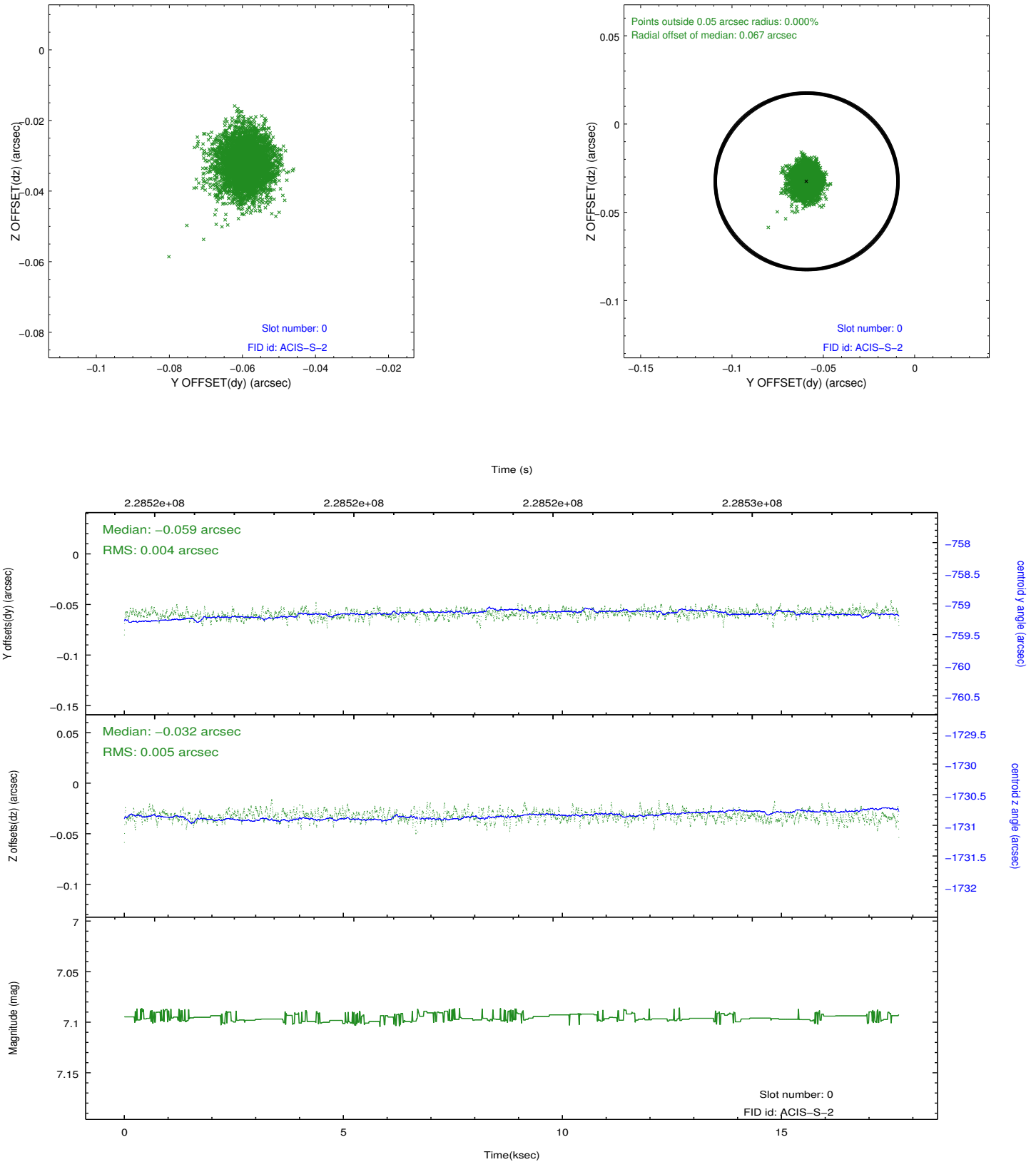


### 2.4.5 Slot 7

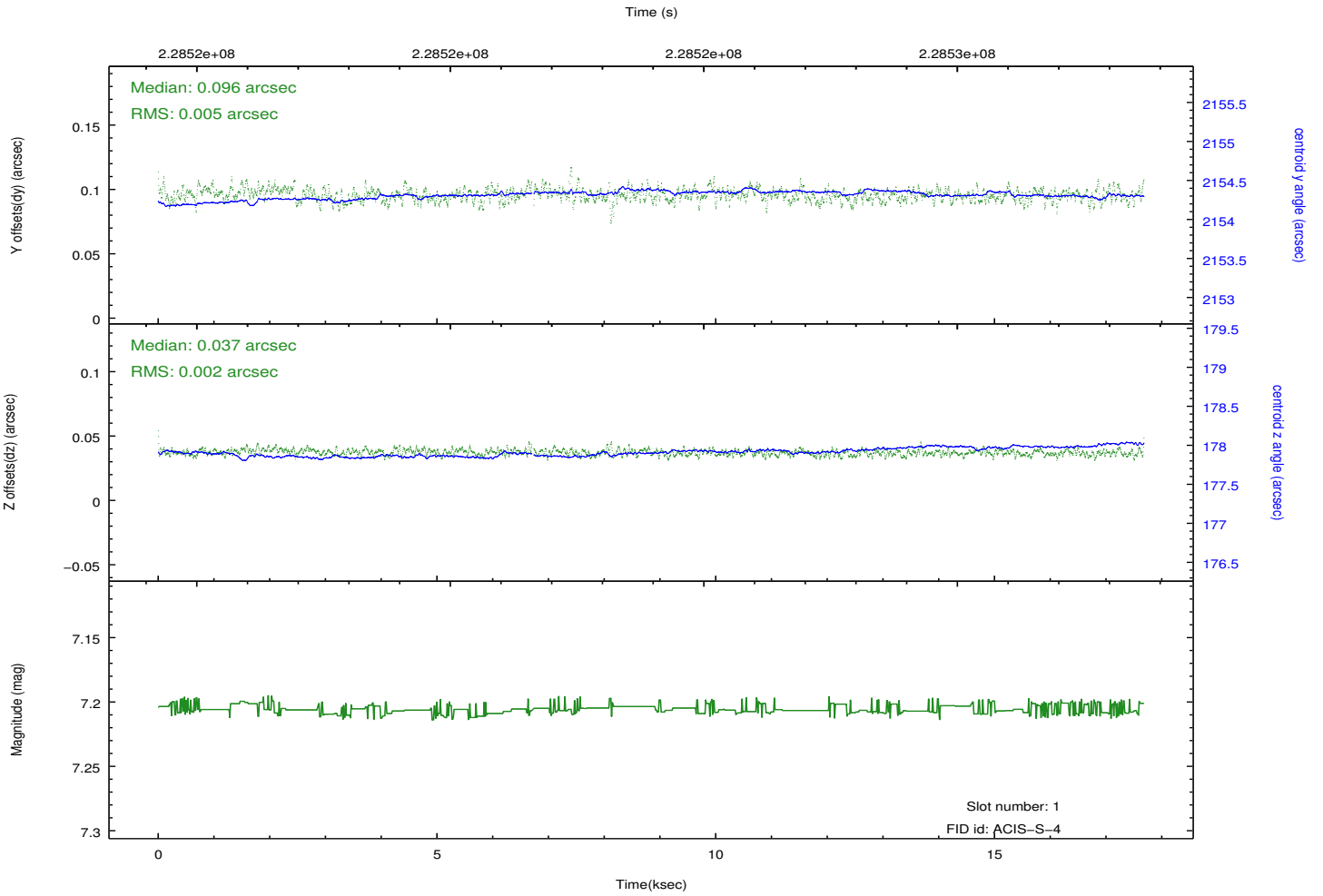
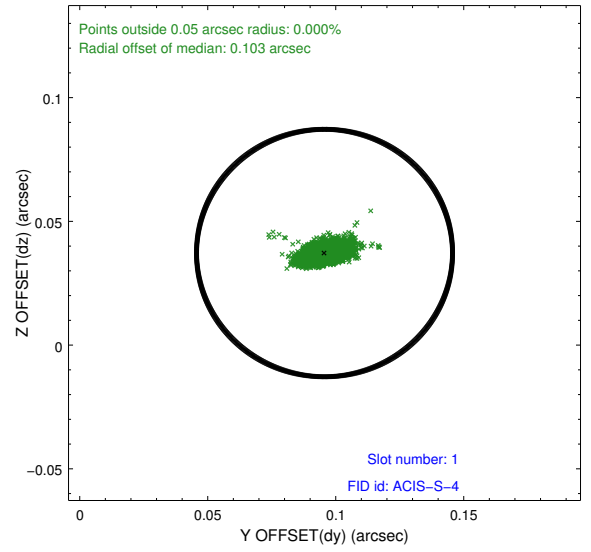
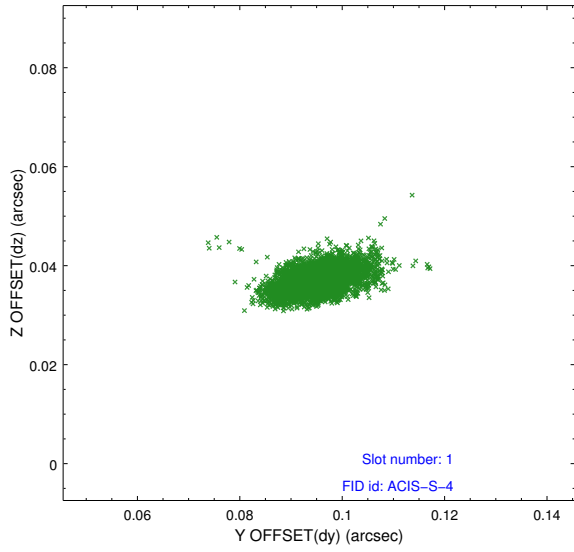


## 2.5 FID Slots

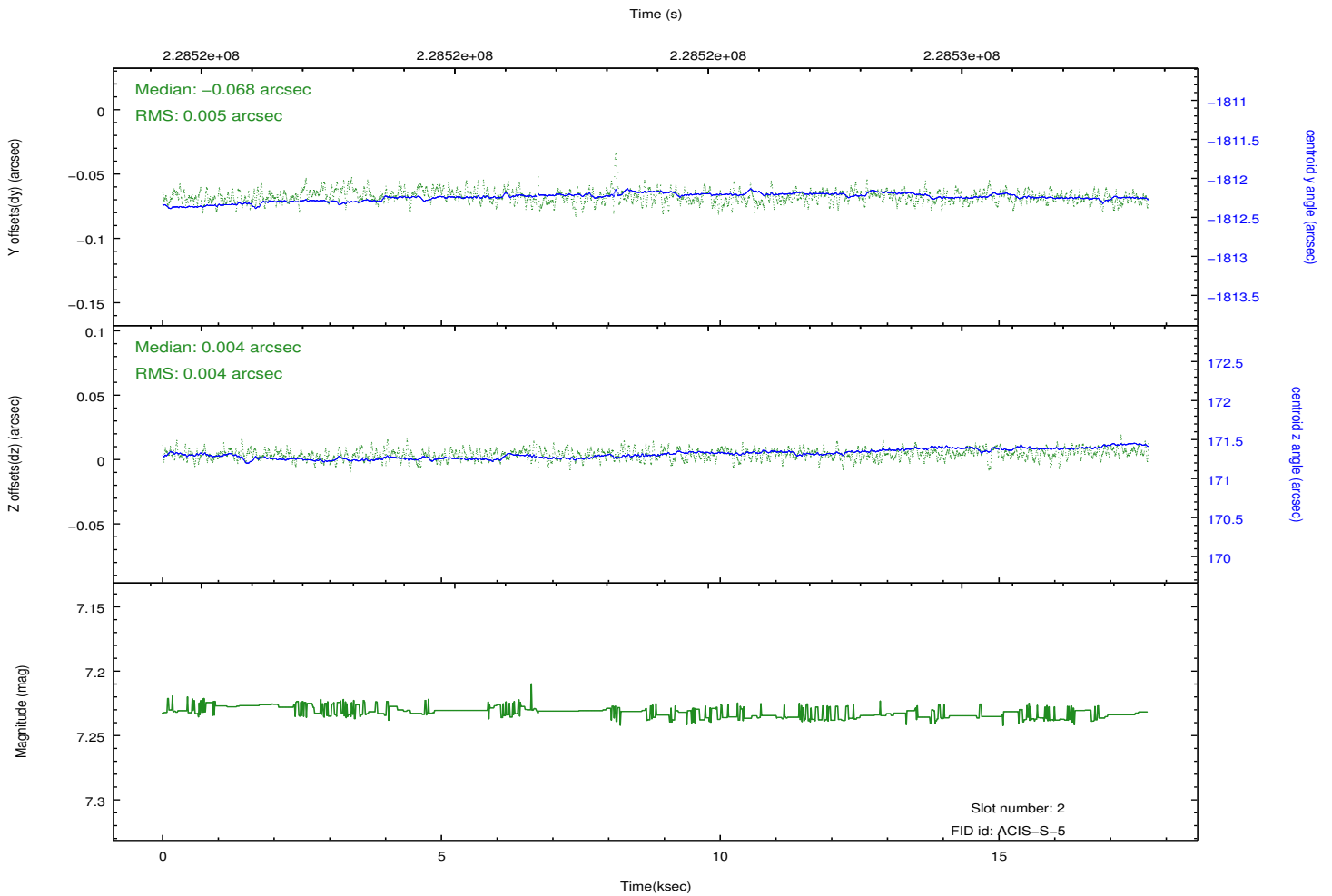
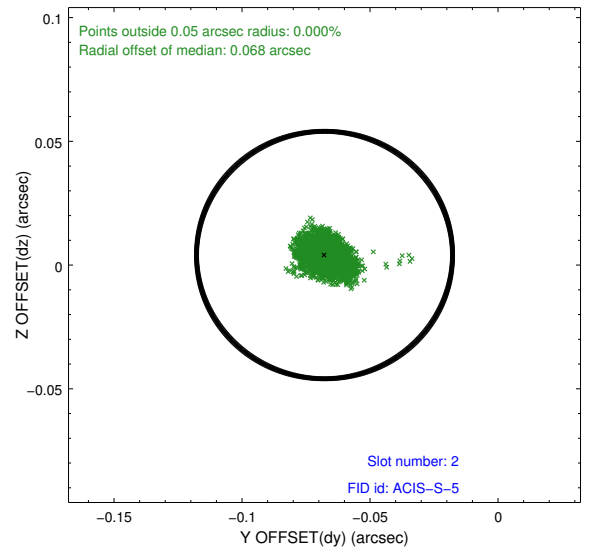
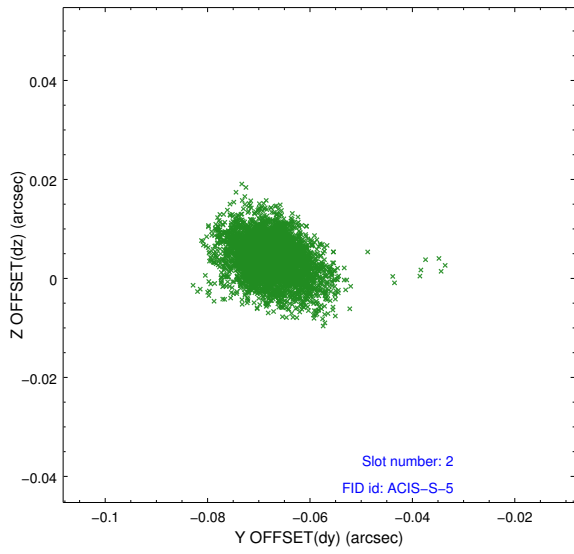
### 2.5.1 Slot 0



## 2.5.2 Slot 1



### 2.5.3 Slot 2



# A Summary

## A.1 Status

V&V Scientist	Beth Sundheim
V&V Date (YYYY-MM-DD)	2013.01.14
V&V Edition	1
V&V Disposition and Status	OK
V&V Charge Time	17.03759

## A.2 Comments

Charge time for this observation remains at previous value of 17.03759 ksec.