

V&V Reference Report

L2 ASCDS Version : 8.1.2

Observation 643 - L2 Version 5
Chandra X-Ray Center

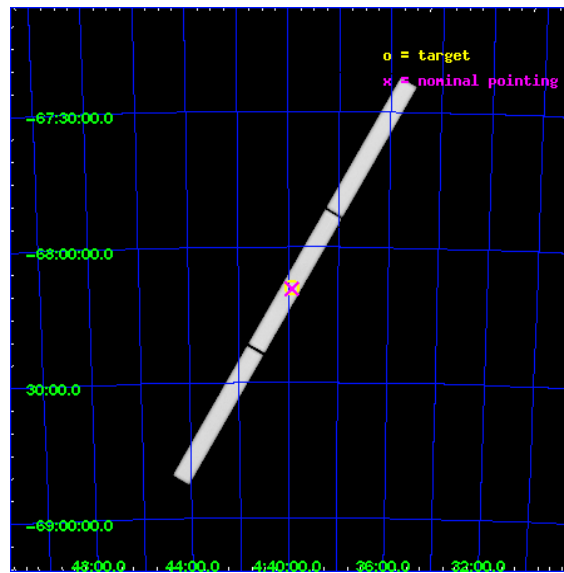
L2 Processing Date : Dec 5 2009

Contents

1	Front	2
2	OBI	3
2.1	OBI	3
2.1.1	Images	3
2.1.2	Parameters	4
2.1.3	Events	4
2.2	Compared Parameters	5
2.3	Aspect	6
2.4	Star Slots	9
2.4.1	Slot 3	9
2.4.2	Slot 4	10
2.4.3	Slot 5	11
2.4.4	Slot 6	12
2.4.5	Slot 7	13
2.5	FID Slots	14
2.5.1	Slot 0	14
2.5.2	Slot 1	15
2.5.3	Slot 2	16
3	Gratings	17
3.1	LETG Arm	17
A	Summary	19
A.1	Status	19
A.2	Comments	19

1 Front

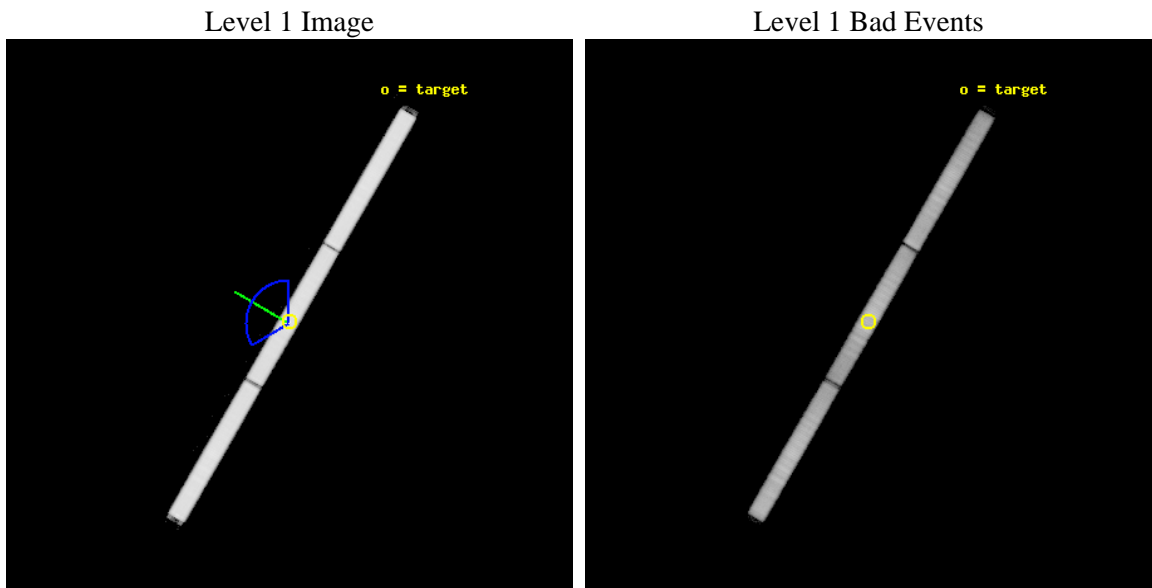
seq_num	300012	Sequence number
obs_id	643	Observation id
title	THE NATURE OF THE SUPERSOFT X-RAY SOURCE RXJ0439.8-6809	Proposal t
observer	Dr. Andre Van Teeseling	Principal investigator
object	RX J0439.8-6809	Source name
ra_targ	69.956667	Observer's specified target RA
dec_targ	-68.150278	Observer's specified target Dec
ra_nom	69.962763737343	Nominal RA
dec_nom	-68.154883998571	Nominal Dec
roll_nom	300.07299203701	Nominal Roll
revision	5	Processing version of data
ontime	40480.326472484	[s]
livetime	40119.129842151	Overtime multiplied by DTCOR
l2events	2262166	Number of level 2 events



2 OBI

2.1 OBI

2.1.1 Images



2.1.2 Parameters

obi_num	0	Obi number	sched_exp_time	40000.000000	Scheduled observation exposure time
ascdsver	8.1.2	Processing system revision	ontime	40480.326472484	[s]
caldbver	4.1.4	 	ll events	3459165	Number of level 1 events
date	2009-12-05T13:38:52	Date and time of file creation			
revision	5	Processing version of data			

2.1.3 Events

Level 1 Events

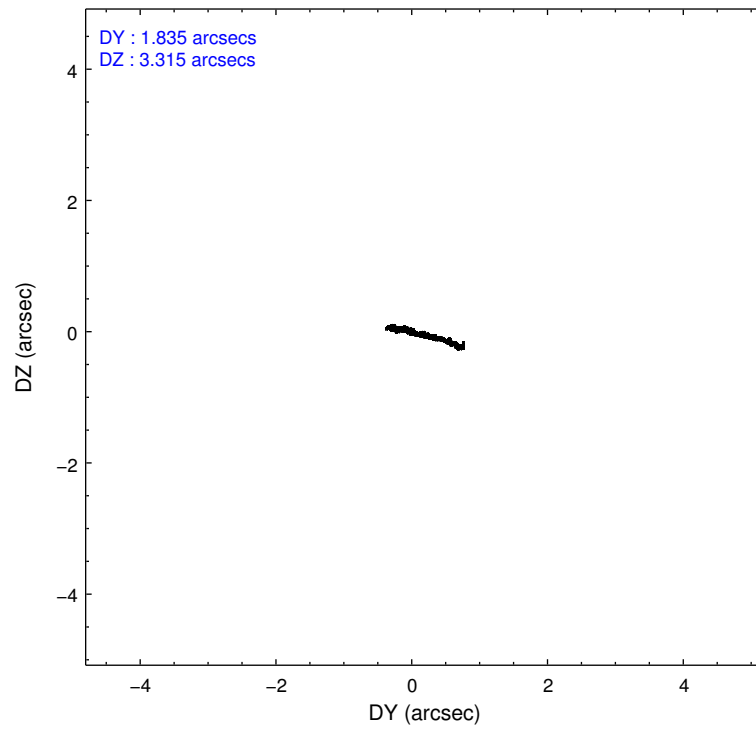
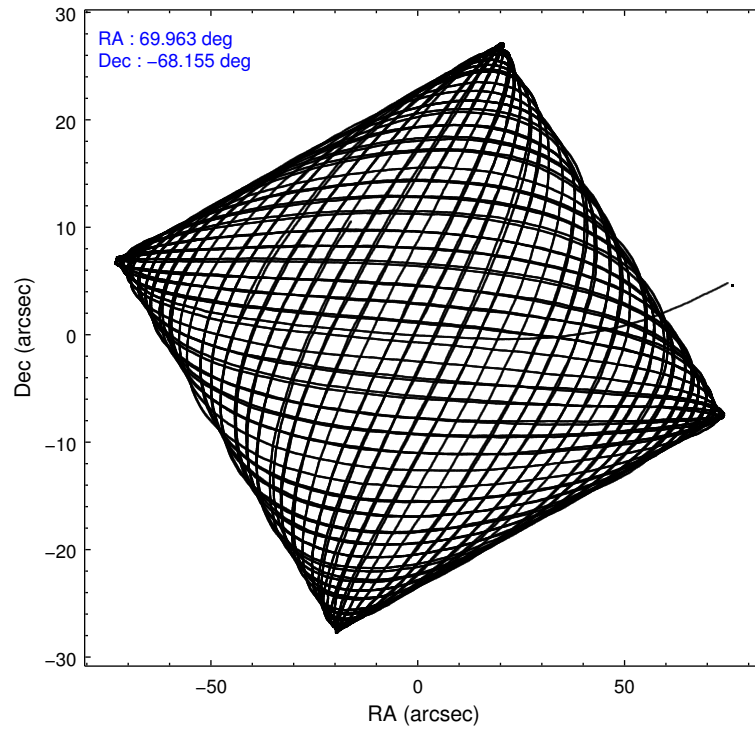
	segment 1	segment 2	segment 3
level 1 events	1193307	1110882	1154976
rejected events	277952	295828	341478
rejected %	23%	26%	29%

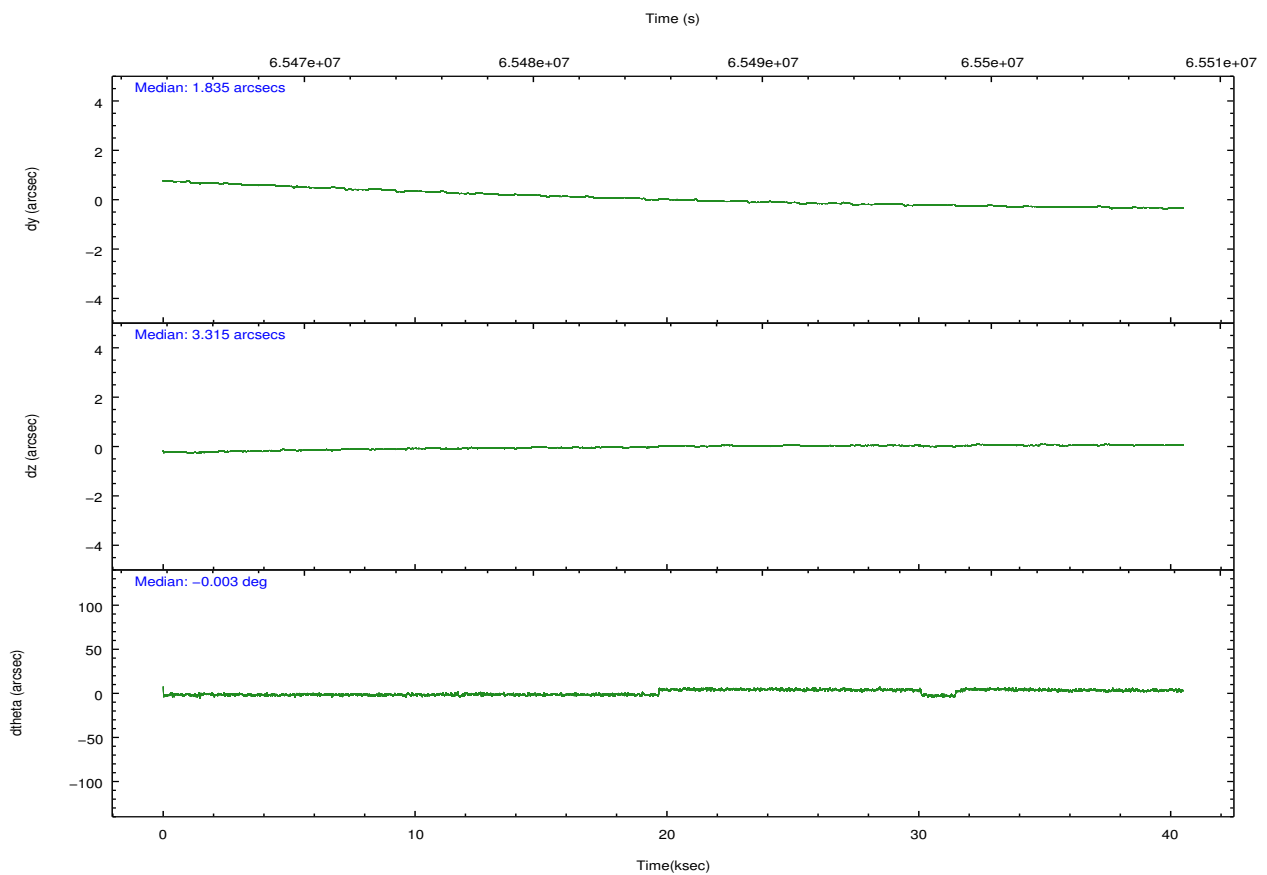
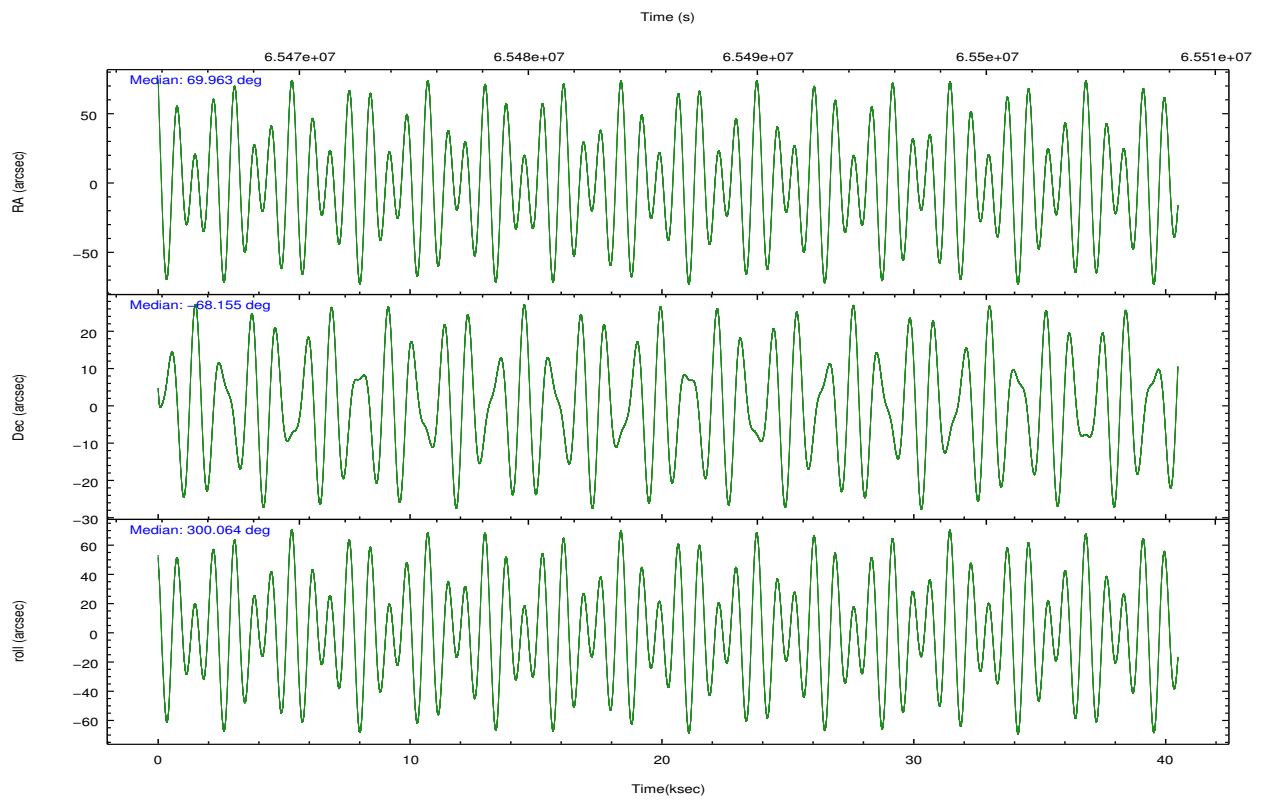
2.2 Compared Parameters

Parameter	Planned	Actual
Instrument	HRC	HRC
Detector	HRC-S	HRC-S
Grating	LETG	LETG
Data mode	OBSERVING	OBSERVING
Observation mode	POINTING	POINTING
Pointing RA	69.894276	69.96276373734344
Pointing Dec	-68.141356	-68.1548839985708
Pointing Roll	299.942097	300.0729920370068
Roll angle	300.000000	300.000000
Roll tolerance	60.000000	60.000000
Roll constraint allows 180D rotation	N	N
SIM focus pos (mm)	-1.429586	-1.428180813131781
SIM defocus (mm)	0.1037507710433287	0.1051558262725154
SIM translation stage pos (mm)	250.455976	250.466033080201
SIM translation stage offset (mm)	0	-0.01005468664627074
Observation start time	65466343.184000	65465197.209804
Observation start date	2000-01-28T17:04:39	2000-01-28T16:46:37
Observation end time	65506343.184000	65507166.86133
Observation end date	2000-01-29T04:11:19	2000-01-29T04:26:06

Parameter	Planned	Actual
Obspar format version number	6	6
Obspar file type	PREDICTED	ACTUAL
Obspar update status	NONE	UPDATED

2.3 Aspect



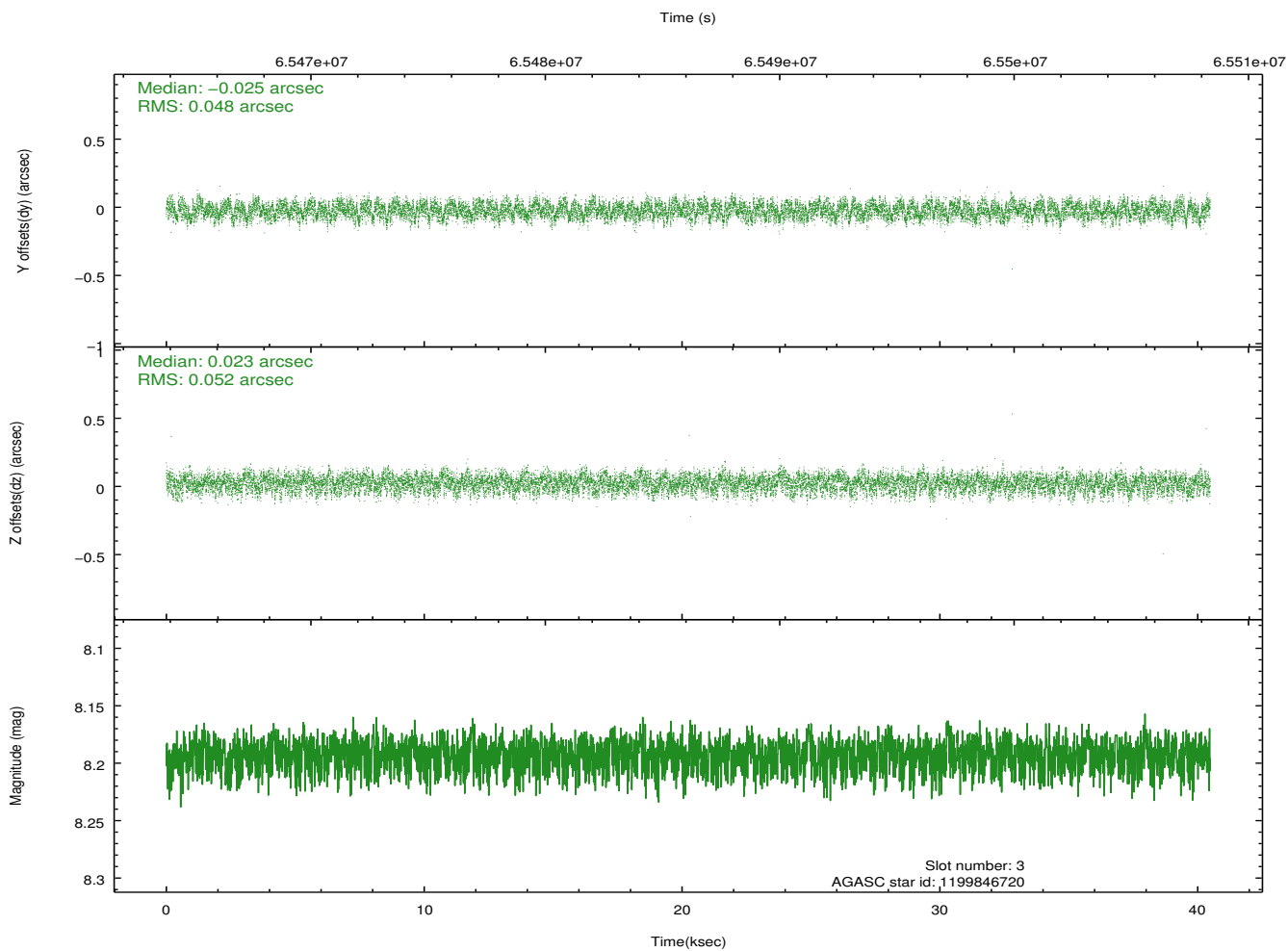
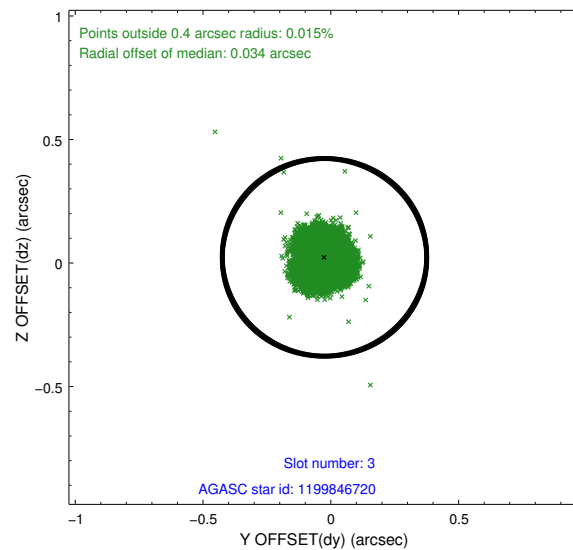
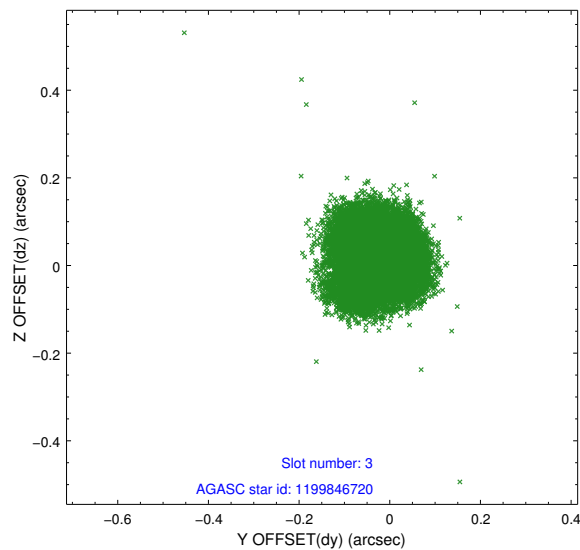


Slot Statistics

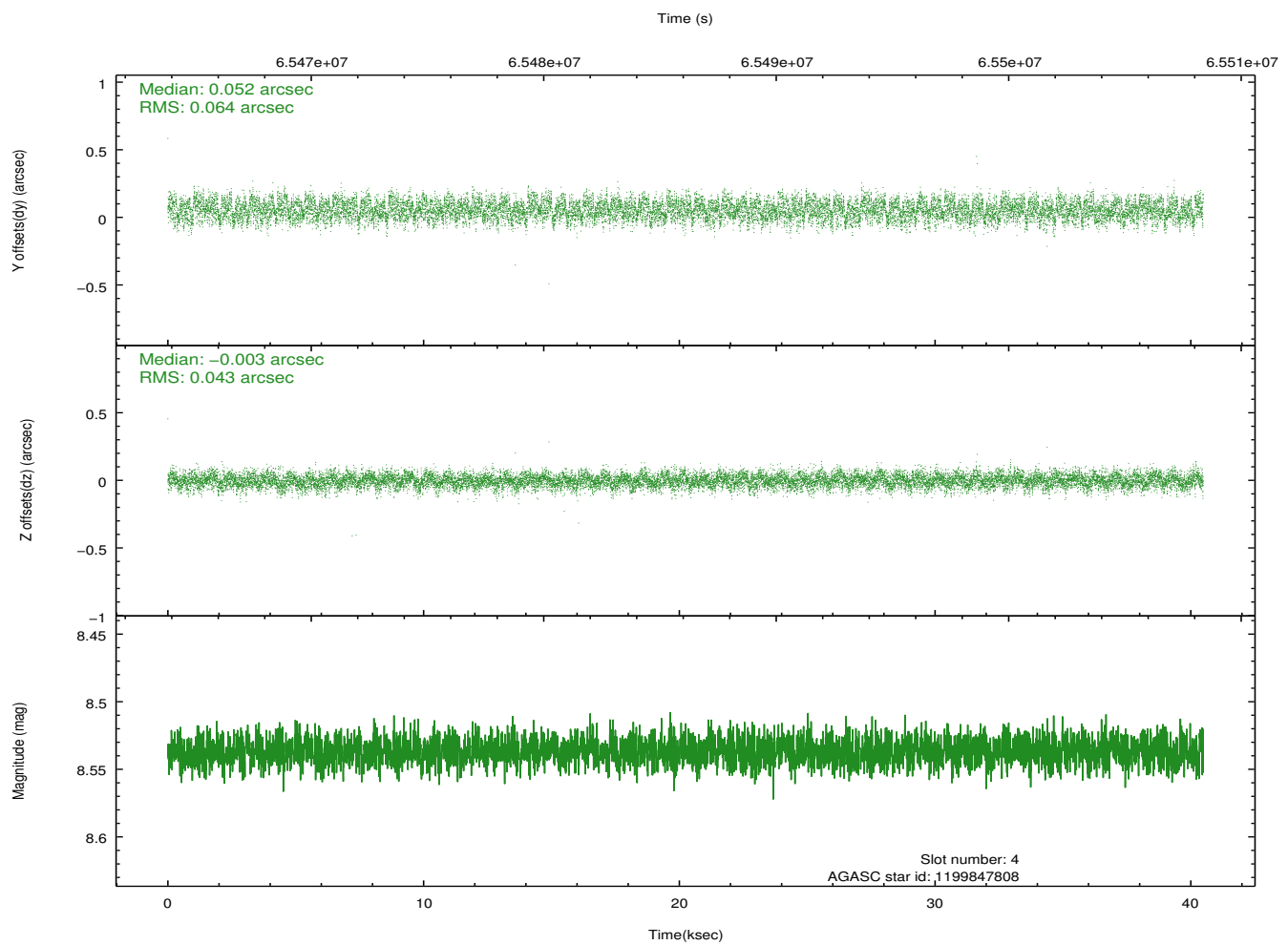
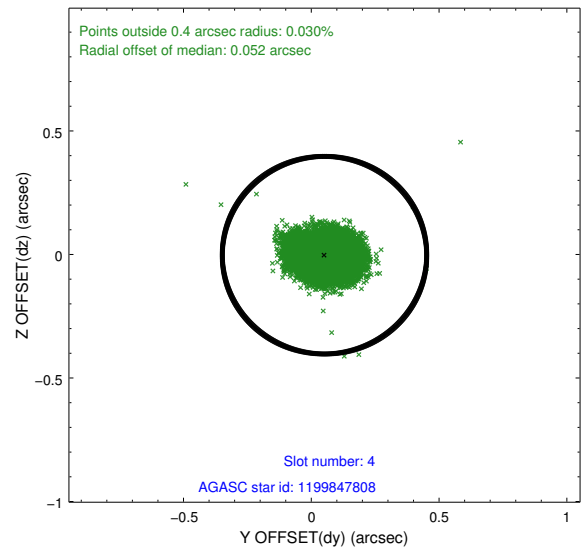
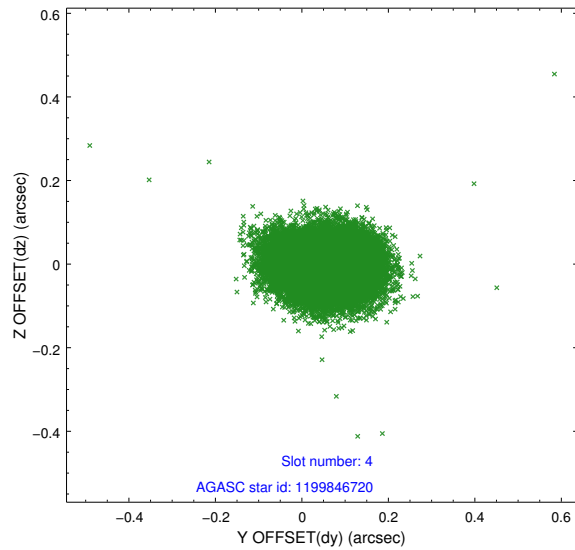
slot	status	id	mag	n_pts	med_dy	med_dz	dr1	dr2	ra	dec	mean_y	mean_z
0	FID	HRC-S-1	6.96	9875	0.108	-0.058	0.012	0.016	0.000000	0.000000	-1155.96	-451.64
1	FID	HRC-S-3	6.99	9872	0.139	-0.148	0.012	0.020	0.000000	0.000000	-1158.75	577.76
2	FID	HRC-S-4	6.92	9872	0.138	-0.091	0.015	0.023	0.000000	0.000000	1242.23	580.44
3	GUIDE	1199846720	8.19	19743	-0.025	0.023	0.077	0.119	71.282393	-68.021166	576.30	1826.26
4	GUIDE	1199847808	8.54	19742	0.052	-0.003	0.083	0.130	69.555035	-68.811659	1872.03	-1587.05
5	GUIDE	1164974200	9.36	19741	0.048	-0.042	0.130	0.200	70.698989	-67.406913	-1729.72	2280.27
6	GUIDE	1199842184	9.79	19642	-0.077	0.063	0.094	0.155	68.838598	-68.229218	-418.98	-1384.96
7	GUIDE	1199838304	9.68	19733	0.007	-0.038	0.091	0.150	68.946531	-68.237917	-321.62	-1274.46

2.4 Star Slots

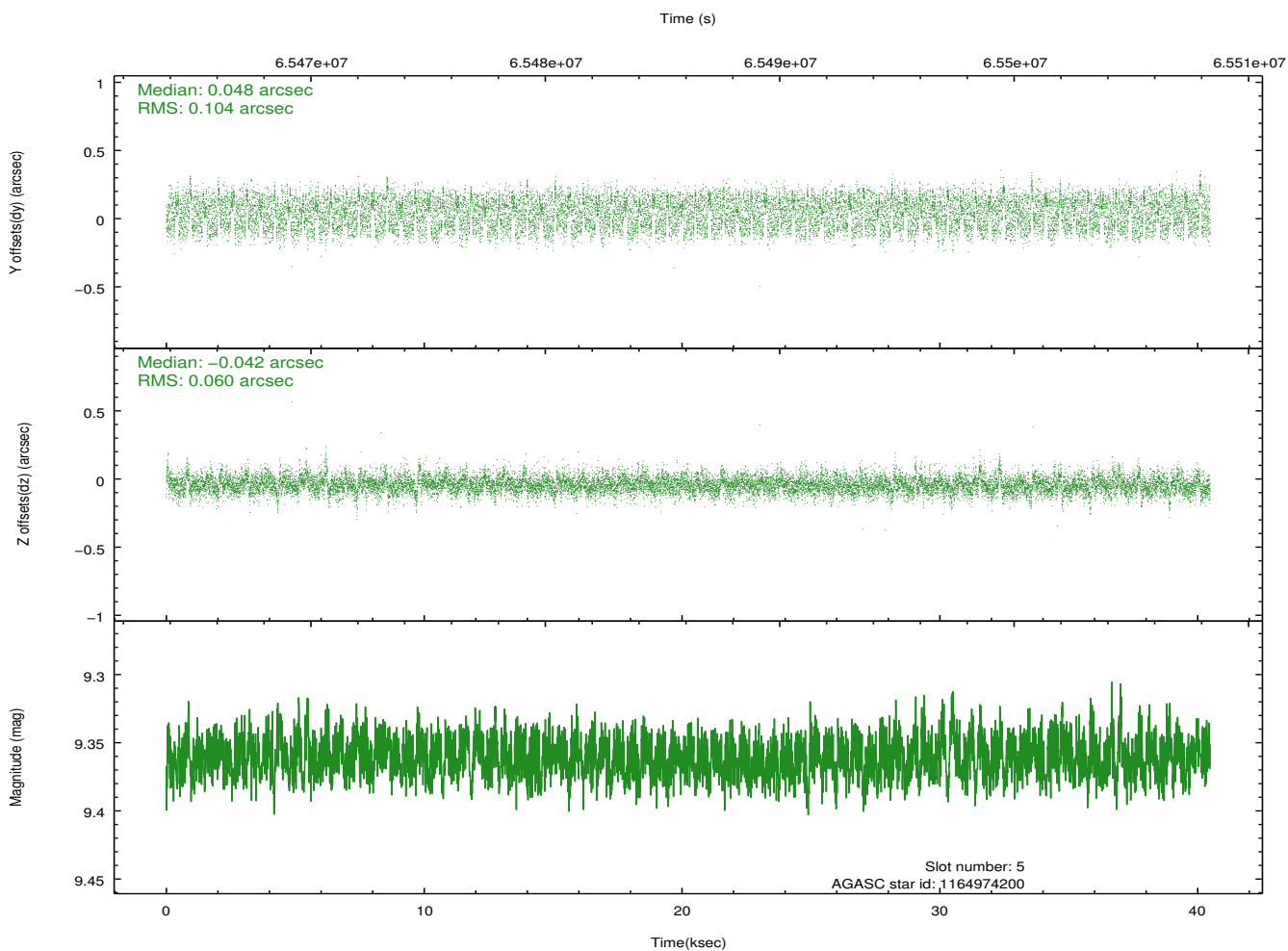
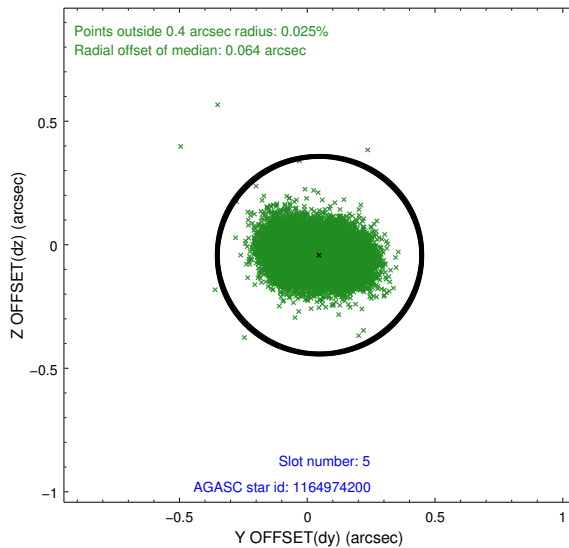
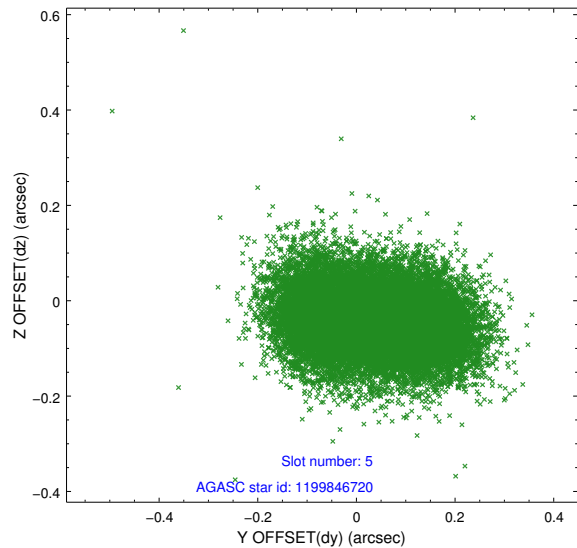
2.4.1 Slot 3



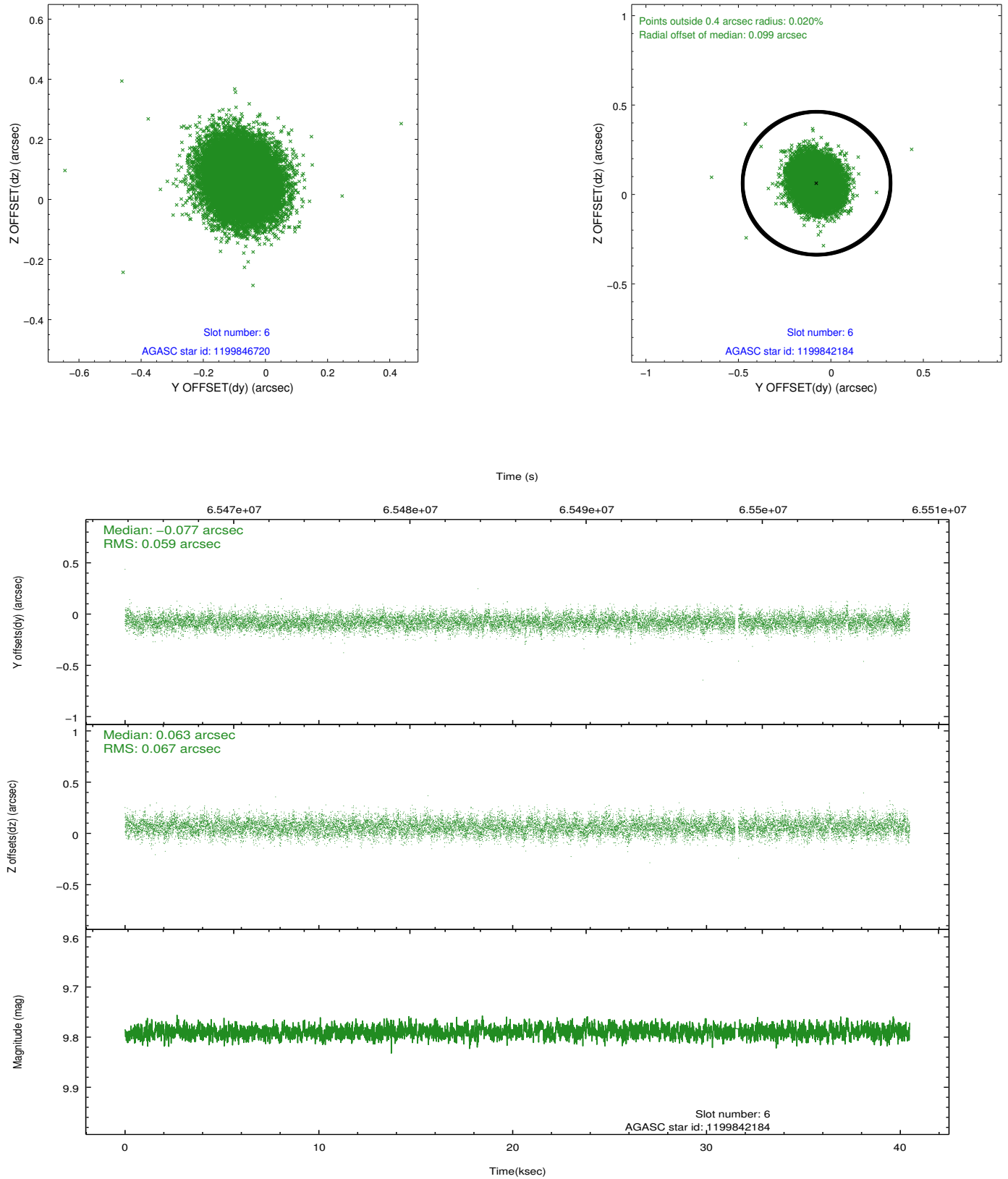
2.4.2 Slot 4



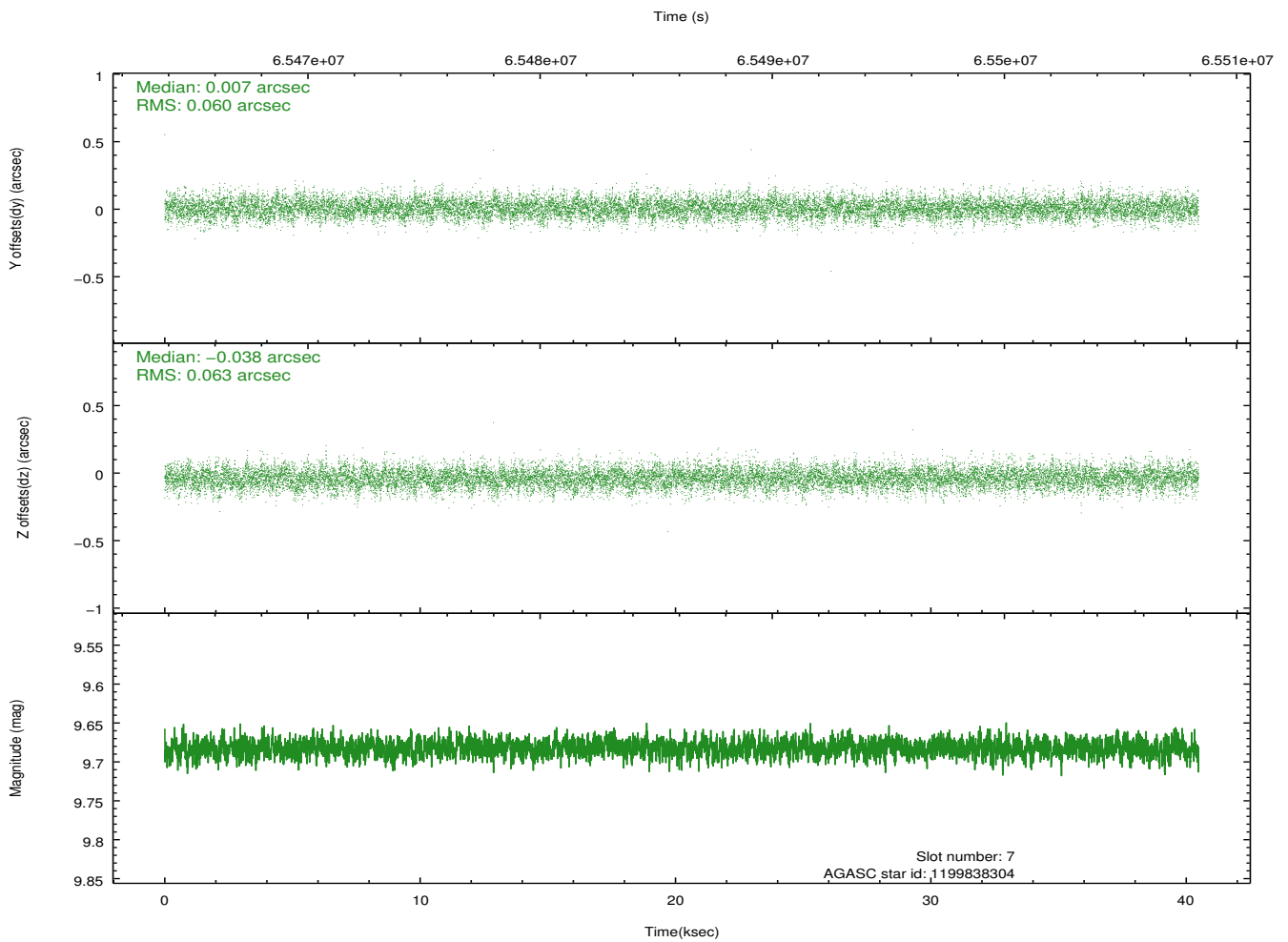
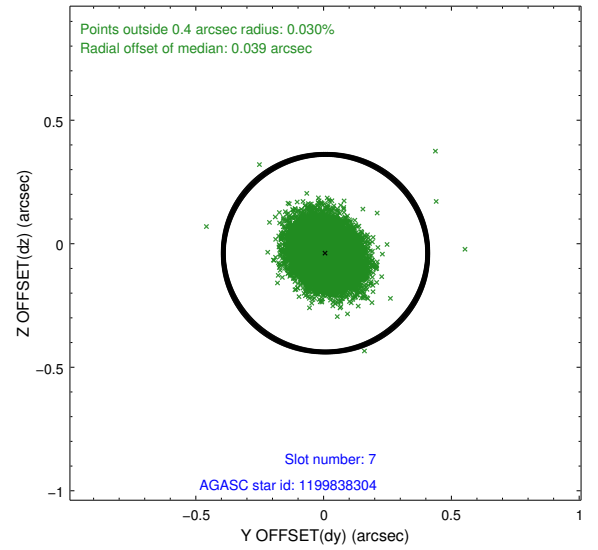
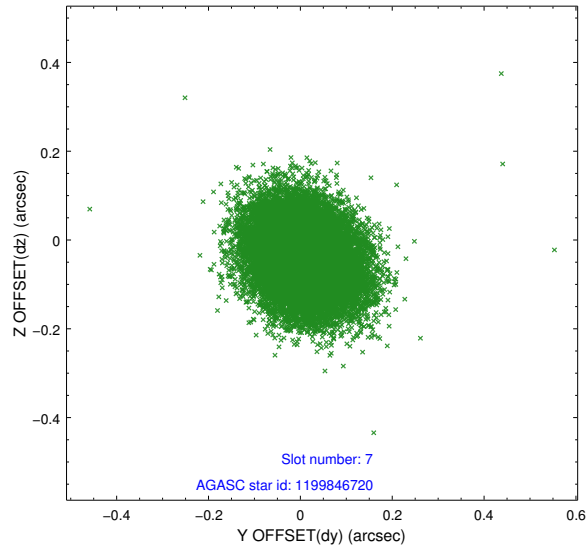
2.4.3 Slot 5



2.4.4 Slot 6

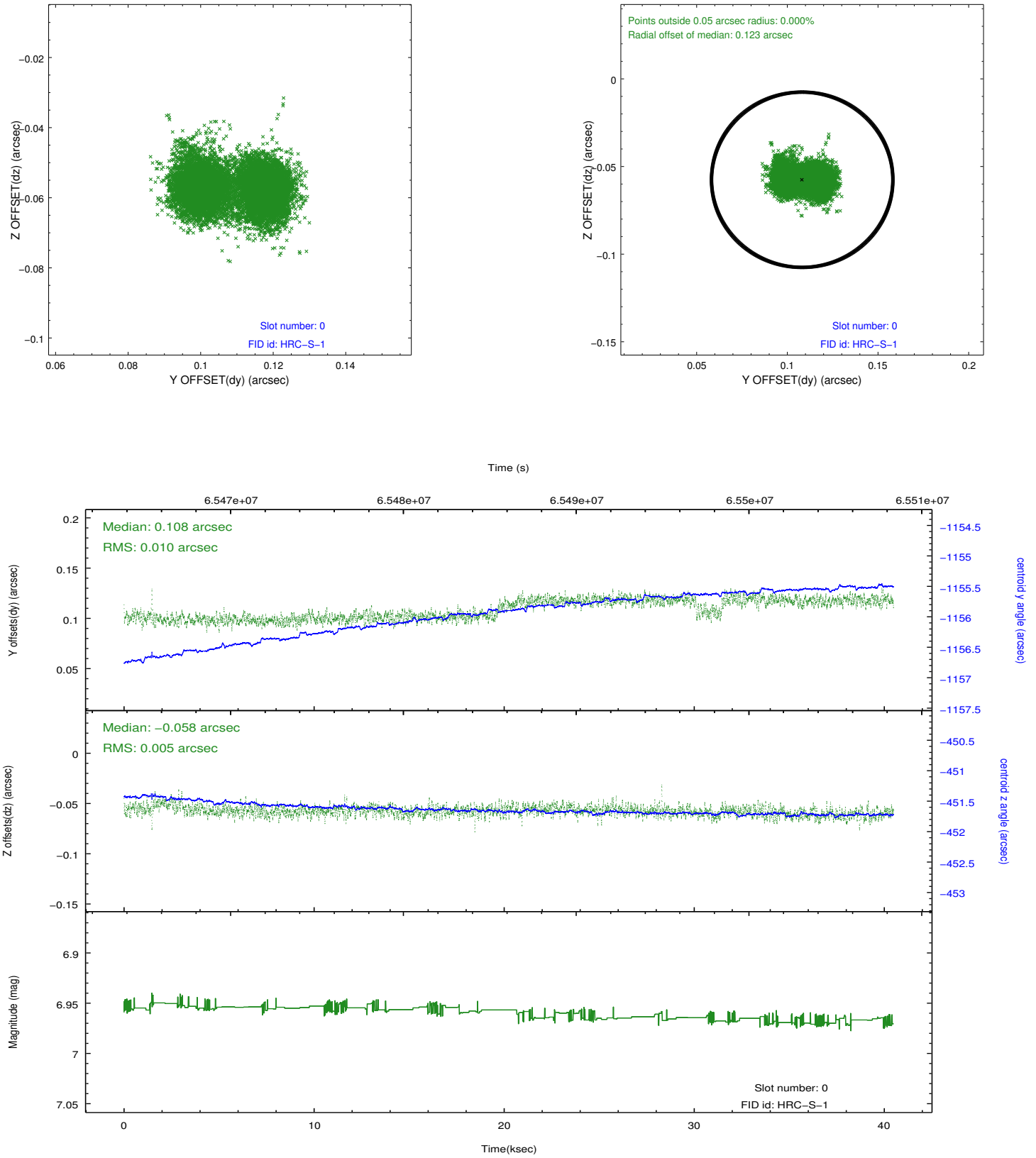


2.4.5 Slot 7

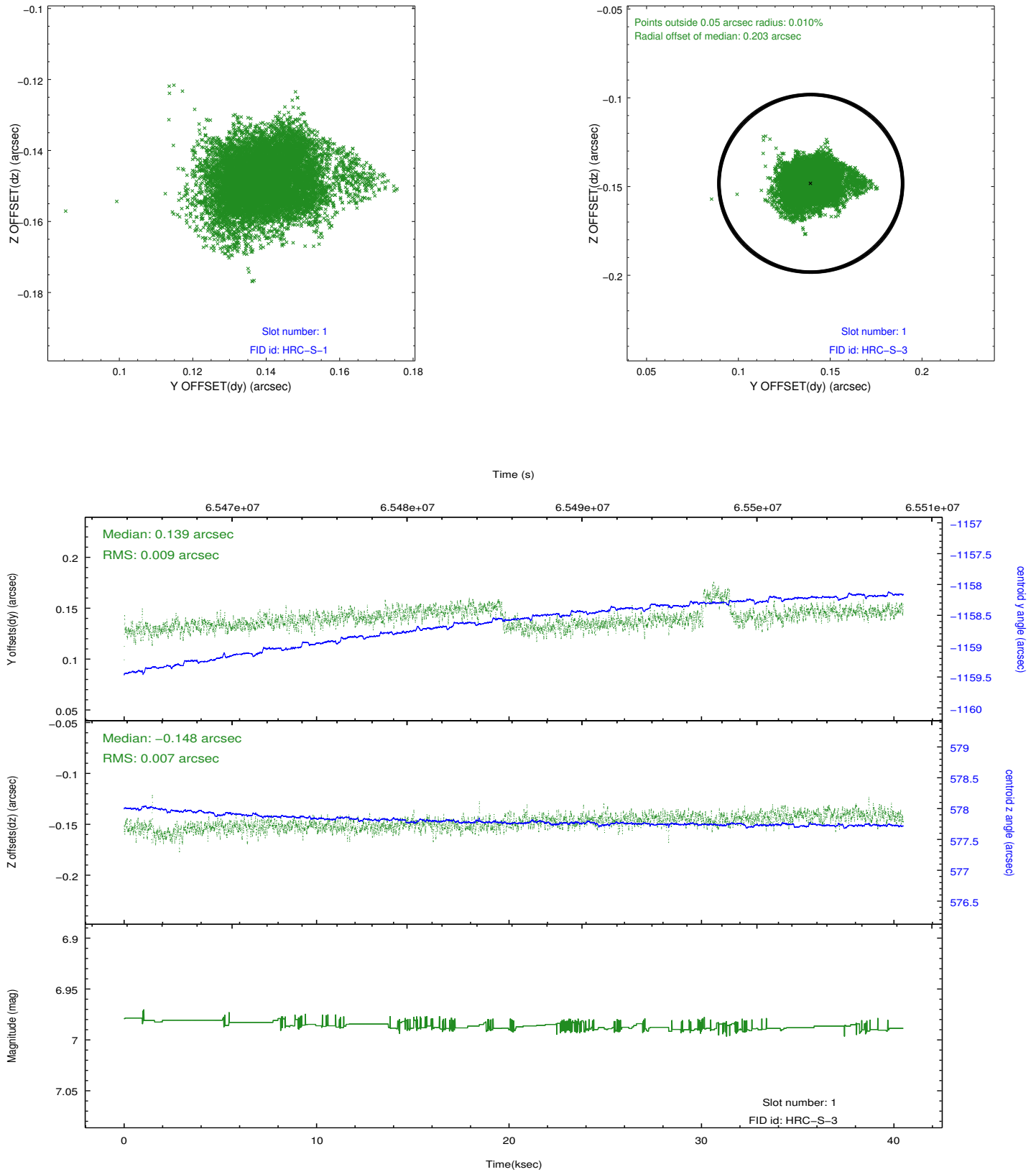


2.5 FID Slots

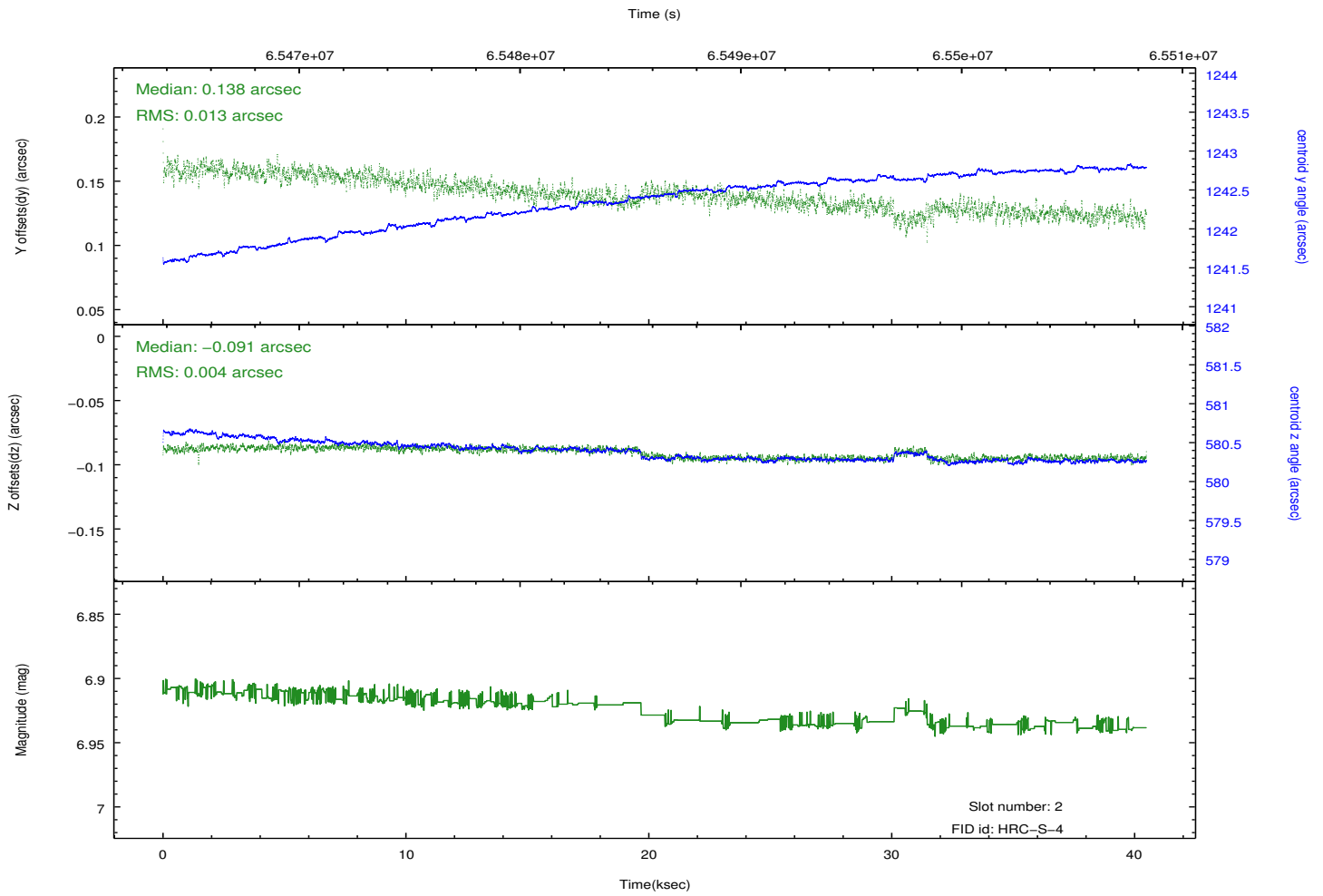
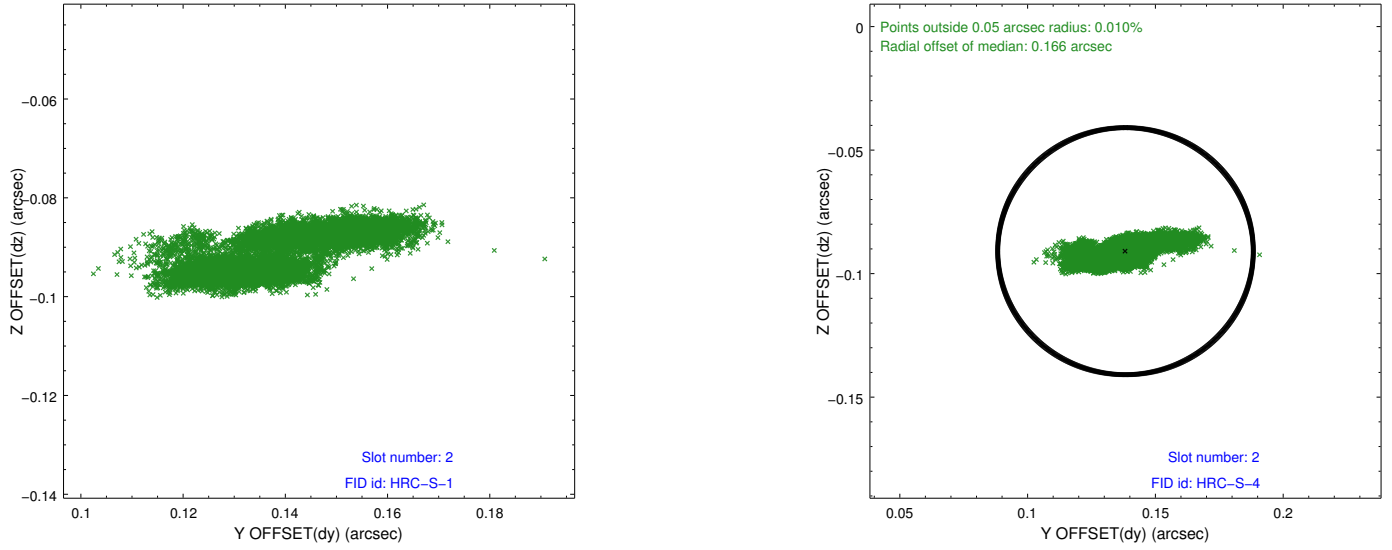
2.5.1 Slot 0



2.5.2 Slot 1

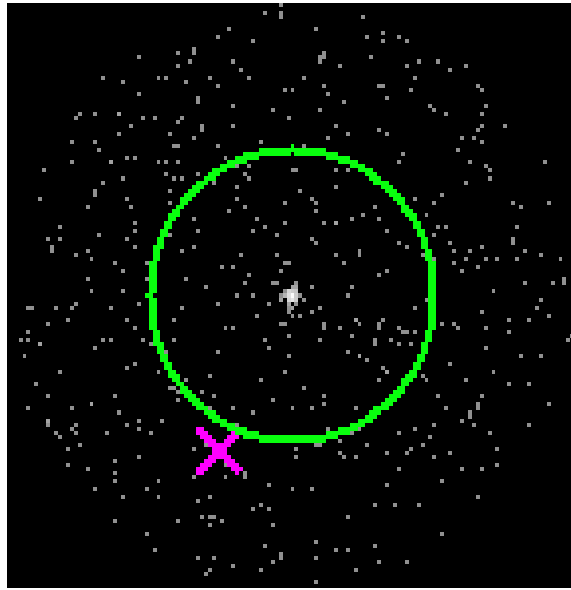


2.5.3 Slot 2

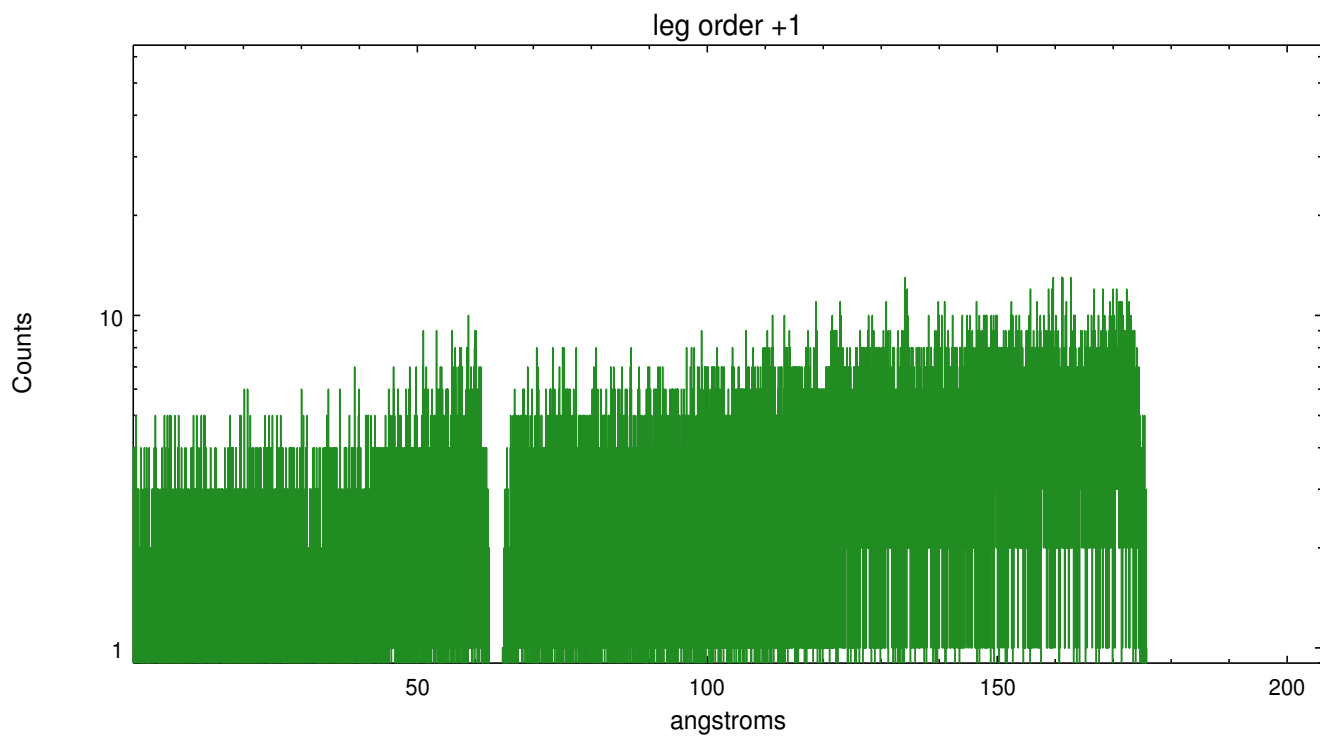
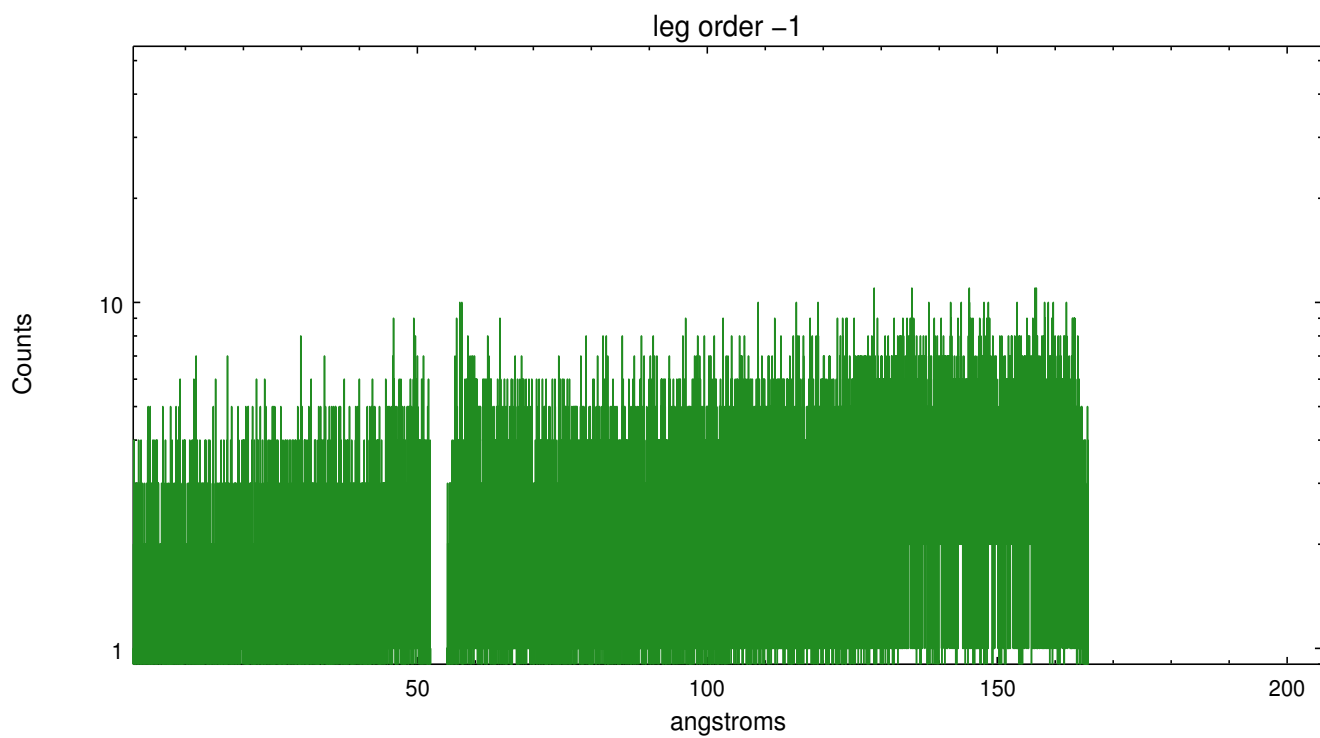


3 Gratings

3.1 LETG Arm



LETG Zero Order



A Summary

A.1 Status

V&V Scientist	Joy Nichols
V&V Date (YYYY-MM-DD)	2010.04.20
V&V Edition	1
V&V Disposition and Status	OK
V&V Charge Time	40.43

A.2 Comments

Roll constraint met.

===

Charge time for this ObsId remains at original value of 40.43 ks,
although
with the current processing the charge time would have been 40.48 ksec.

===

High radiation environment results in periods of enhanced count rate
with
associated lower values of DTF.