

V&V Reference Report

L2 ASCDS Version : 8.4.3

Observation 6873 - L2 Version 2
Chandra X-Ray Center

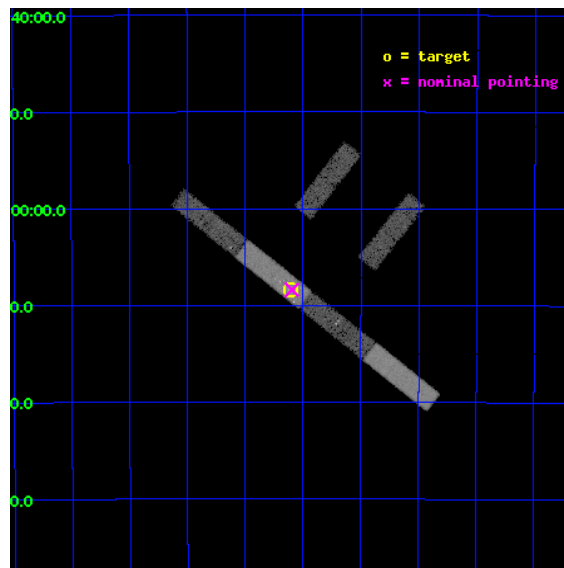
L2 Processing Date : Mar 30 2012

Contents

1	Front	2
2	OBI	3
2.1	OBI	3
2.1.1	Images	3
2.1.2	Bias	3
2.1.3	Parameters	4
2.1.4	Events	4
2.2	Compared Parameters	5
2.3	Aspect	6
2.4	Star Slots	9
2.4.1	Slot 3	9
2.4.2	Slot 4	10
2.4.3	Slot 5	11
2.4.4	Slot 6	12
2.4.5	Slot 7	13
2.5	FID Slots	14
2.5.1	Slot 0	14
2.5.2	Slot 1	15
2.5.3	Slot 2	16
A	Summary	17
A.1	Status	17
A.2	Comments	17

1 Front

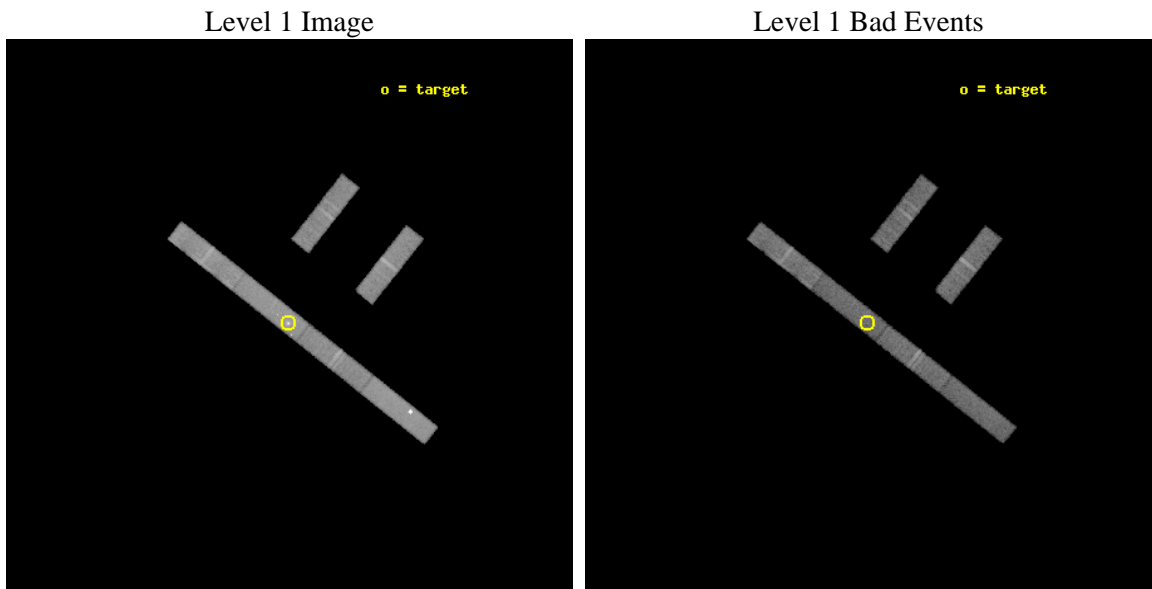
seq_num	701291	Sequence number
obs_id	6873	Observation id
title	Short-time monitoring of the extreme variations in NGC~1365	Propos
observer	Dr Guido Risaliti	Principal investigator
object	NGC 1365	Source name
dtcycle	0	
cycle	P	events from which exps? Prim/Second/Both
ra_targ	53.401667	Observer's specified target RA [deg]
dec_targ	-36.140278	Observer's specified target Dec [deg]
ra_nom	53.399173689223	Nominal RA [deg]
dec_nom	-36.139781036328	Nominal Dec [deg]
roll_nom	218.36435838697	Nominal Roll [deg]
revision	2	Processing version of data
ontime	15182.199917704	Sum of GTIs [s]
livetime	14636.138881612	Livetime [s]
ontime2	15181.058877736	Sum of GTIs [s]
ontime3	15182.199917704	Sum of GTIs [s]
ontime5	15182.199917704	Sum of GTIs [s]
ontime6	15182.199917704	Sum of GTIs [s]
ontime7	15182.199917704	Sum of GTIs [s]
ontime8	15182.199917704	Sum of GTIs [s]
l2events	64152	Number of level 2 events



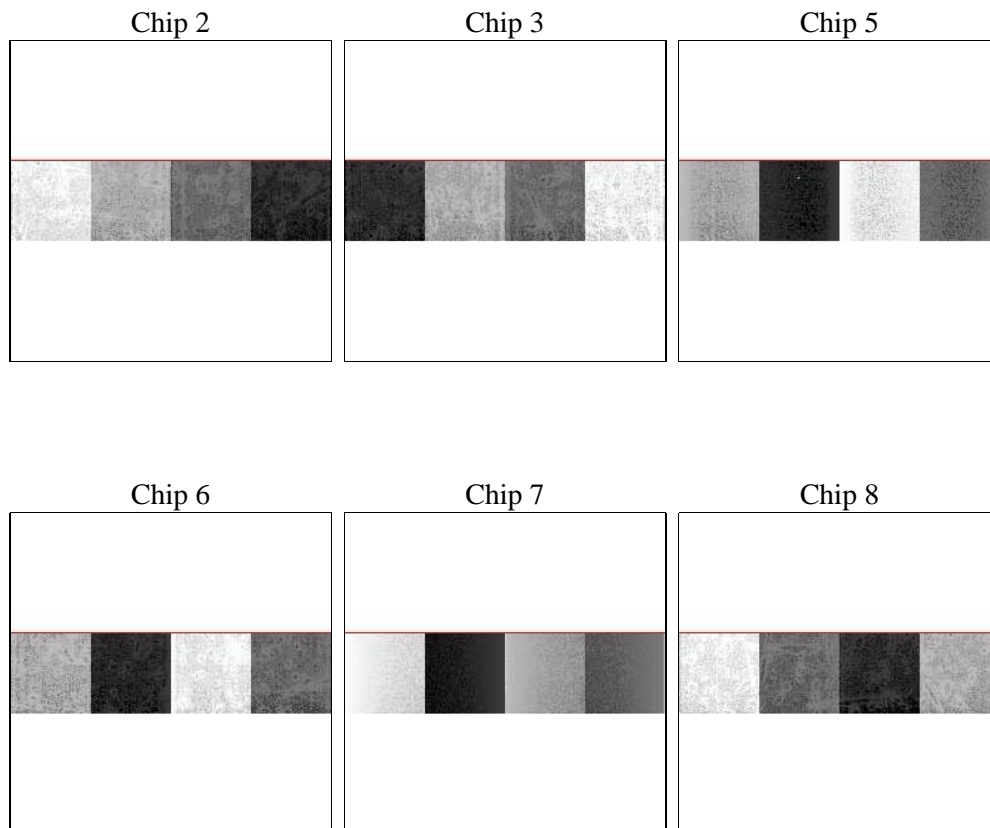
2 OBI

2.1 OBI

2.1.1 Images



2.1.2 Bias



2.1.3 Parameters

obi_num	0	Obi number	sched_exp_time	15000.000000	[s] Scheduled observation exposure time
ascdsver	8.4.3	Processing system revision	ontime	15182.199917704	Sum of GTIs [s]
caldbver	4.4.8	 	ontime2	15181.058877736	Sum of GTIs [s]
date	2012-03-30T05:06:40	Date and time of file creation	ontime3	15182.199917704	Sum of GTIs [s]
revision	2	Processing version of data	ontime5	15182.199917704	Sum of GTIs [s]
			ontime6	15182.199917704	Sum of GTIs [s]
			ontime7	15182.199917704	Sum of GTIs [s]
			ontime8	15182.199917704	Sum of GTIs [s]
			l1events	282994	Number of level 1 events

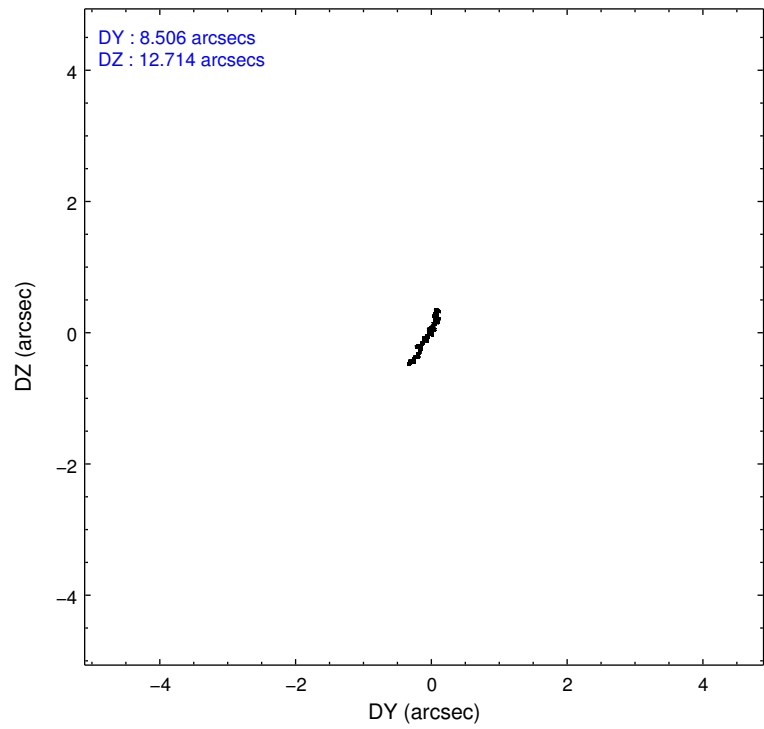
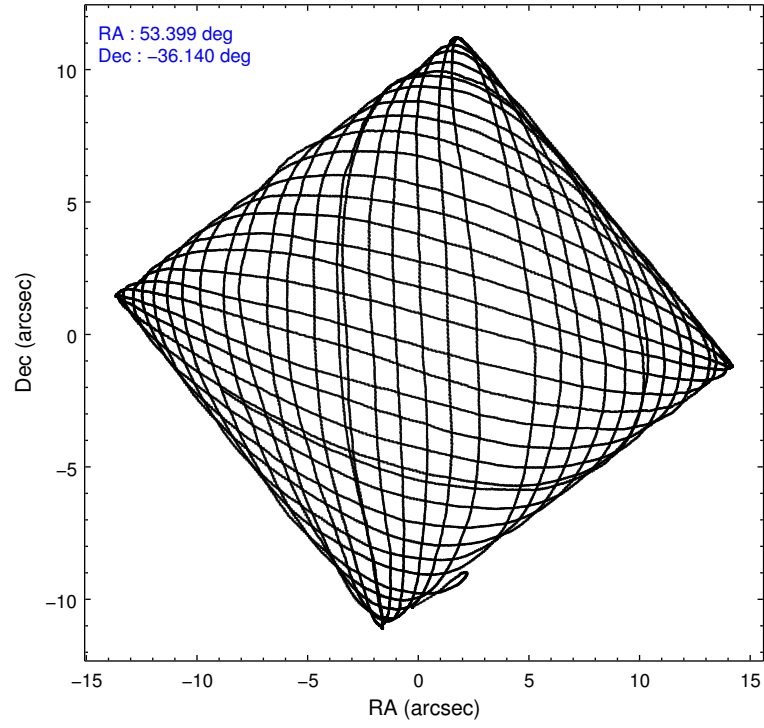
2.1.4 Events

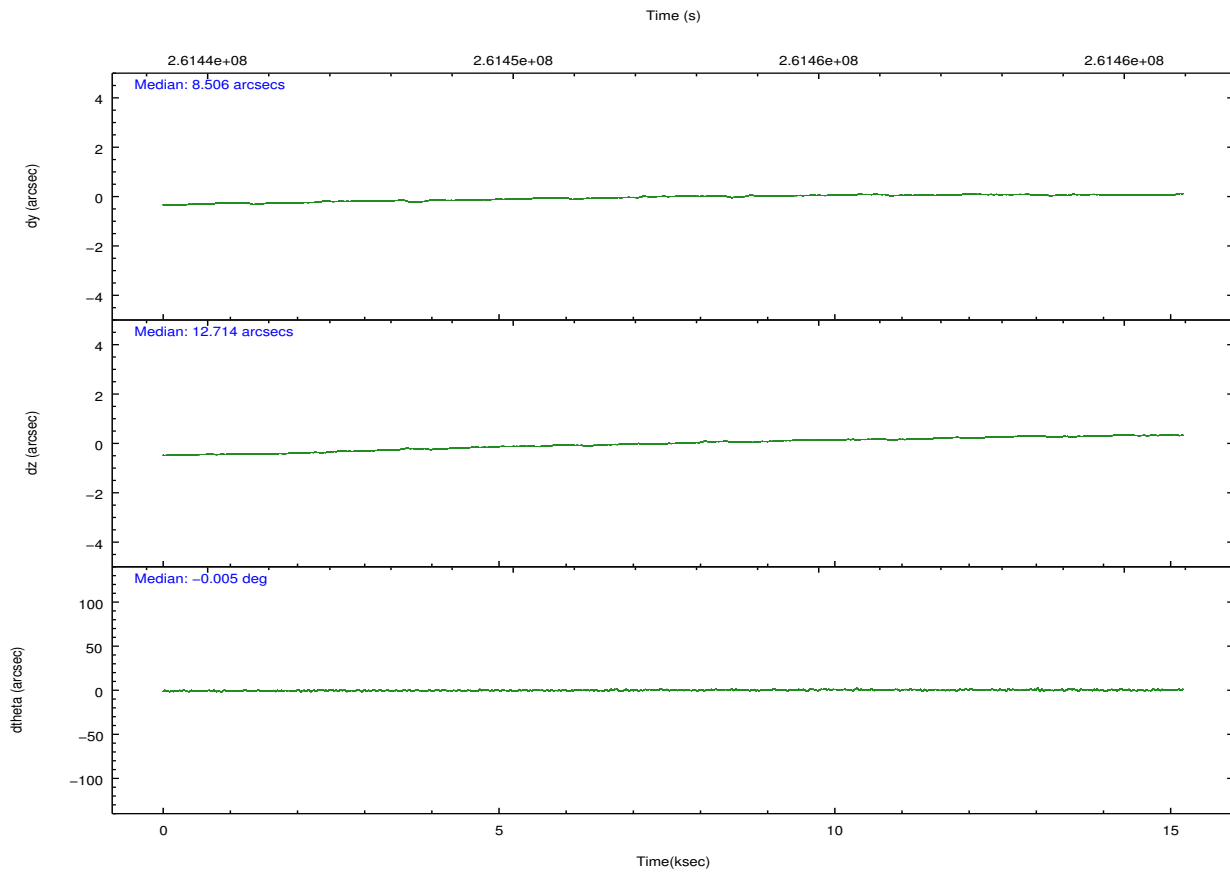
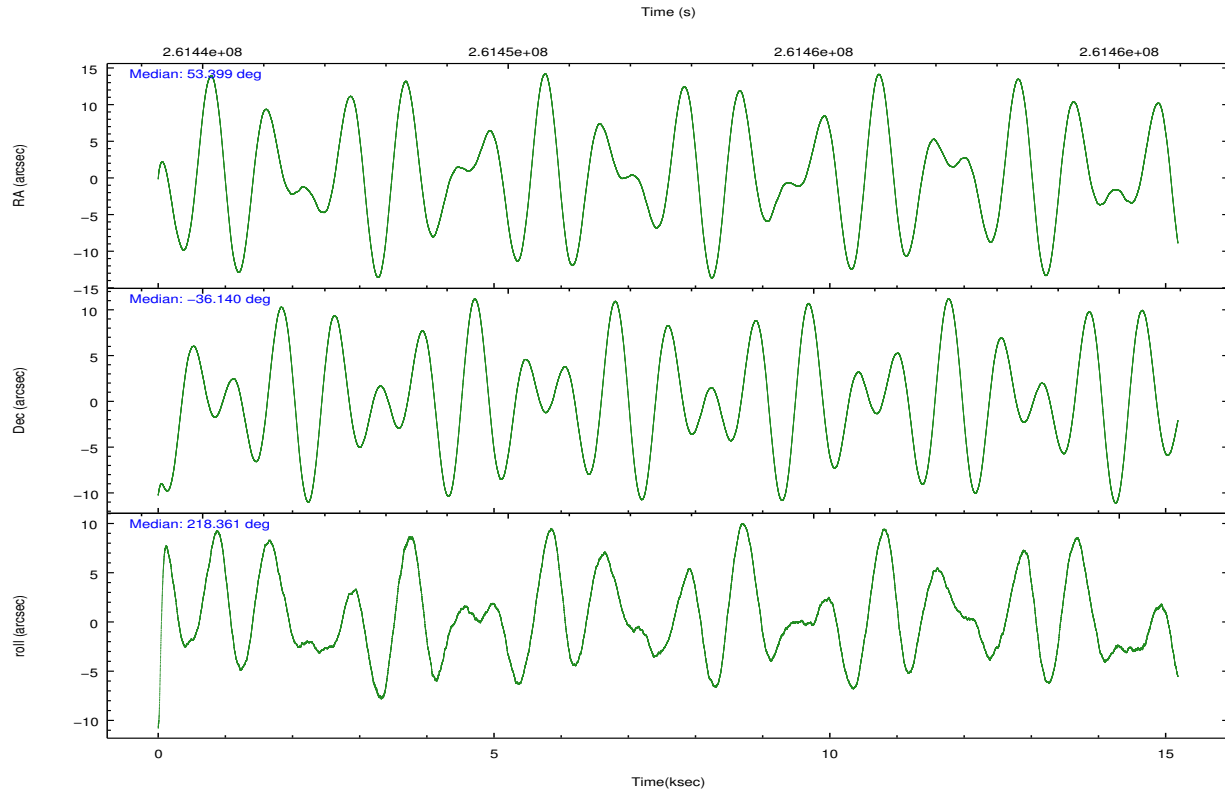
	ccd 2	ccd 3	ccd 5	ccd 6	ccd 7	ccd 8		ccd 2	ccd 3	ccd 5	ccd 6	ccd 7	ccd 8
level 1 events	41208	35756	62192	38947	54166	50725	grade 0 events	1864	1707	13571	1801	3863	3013
rejected events	36468	31493	27327	34163	27729	40404		4%	4%	21%	4%	7%	5%
rejected %	88%	88%	43%	87%	51%	79%	grade 1 events	25	18	78	11	64	21
								0%	0%	0%	0%	0%	0%
							grade 2 events	924	727	6876	874	5667	2192
								2%	2%	11%	2%	10%	4%
							grade 3 events	605	582	1376	643	2793	1109
								1%	1%	2%	1%	5%	2%
							grade 4 events	618	583	1287	626	2847	1078
								1%	1%	2%	1%	5%	2%
							grade 5 events	1372	1489	4224	1620	4598	2072
								3%	4%	6%	4%	8%	4%
							grade 6 events	765	697	11993	878	11444	3014
								1%	1%	19%	2%	21%	5%
							grade 7 events	35035	29953	22787	32494	22890	38226
								85%	83%	36%	83%	42%	75%

2.2 Compared Parameters

Parameter	Planned	Actual	Parameter	Planned	Actual
Instrument	ACIS	ACIS	Obspar format version number	7	7
Detector	ACIS-235678	ACIS-235678	Obspar file type	PREDICTED	ACTUAL
Grating	NONE	NONE	Obspar update status	NONE	UPDATED
Data mode	FAINT	FAINT	Number of optional ACIS chips dropped	0	0
Observation mode	POINTING	POINTING	On-chip summing requested	N	N
[deg] Pointing RA	53.411172	53.39917368922271	Subarray requested	CUSTOM	1/4
[deg] Pointing Dec	-36.114297	-36.13978103632769	Subarray start row	385	385
[deg] Pointing Roll	218.214820	218.3643583869687	Subarray row count	256	256
[mm] SIM focus pos	-0.684267	-0.6828225247311905	Alternating exposures requested	N	N
[mm] SIM defocus	0	0.001444936568705701	[s] Primary exposure time	0.000000	1.1
[mm] SIM translation stage pos	-190.132523	-190.1400660498719			
[mm] SIM translation stage offset	0	0.00754346686406393			
[s] Observation start time (MET)	261445207.184000	261444377.7958			
Observation start date	2006-04-14T23:39:02	2006-04-14T23:26:17			
[s] Observation end time (MET)	261460207.184000	261460841.85907			
Observation end date	2006-04-15T03:49:02	2006-04-15T04:00:41			
Read mode	TIMED	TIMED			

2.3 Aspect



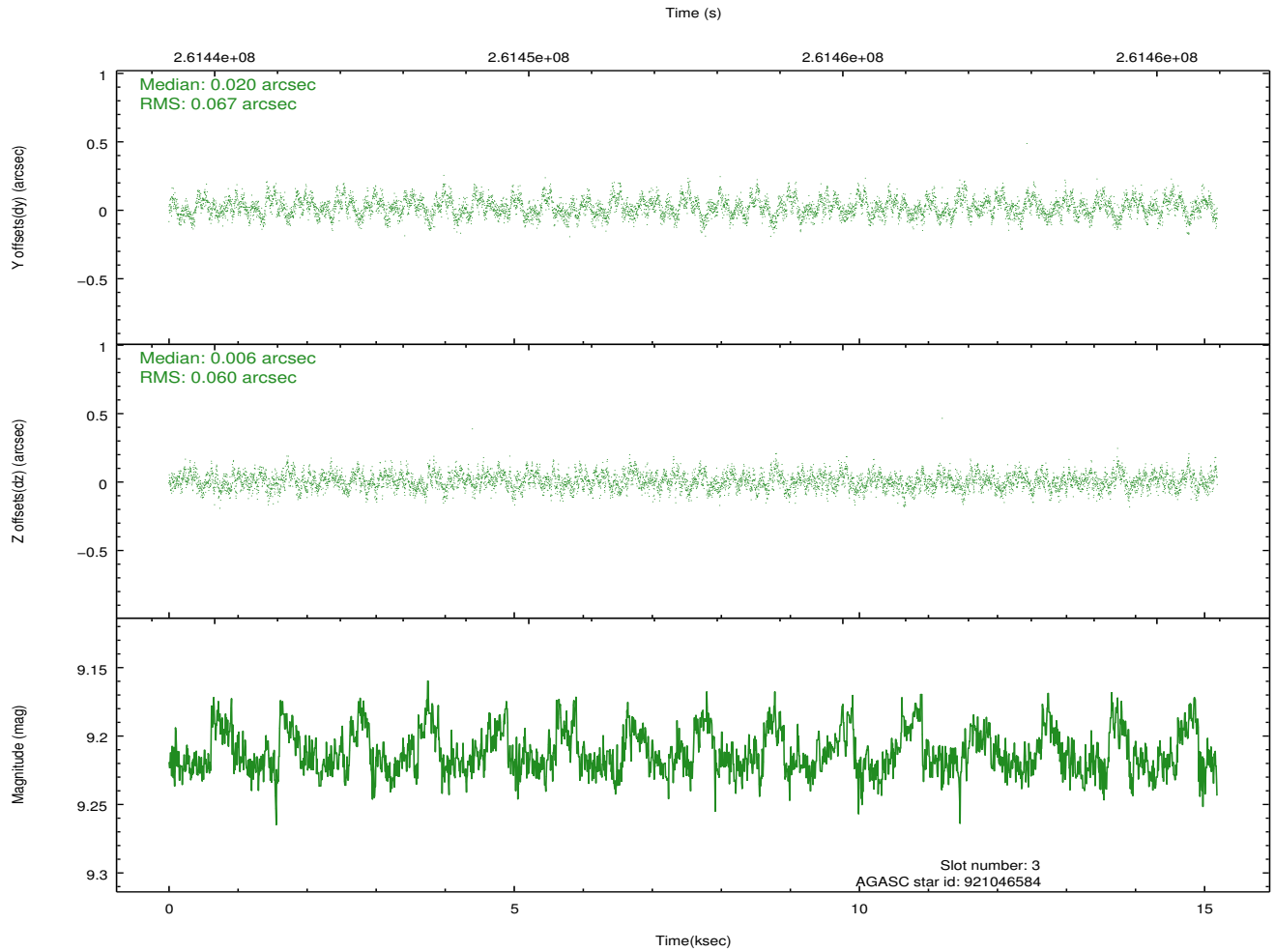
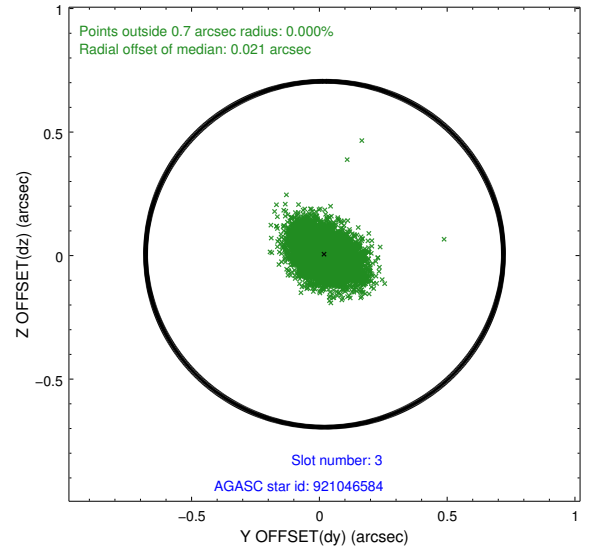
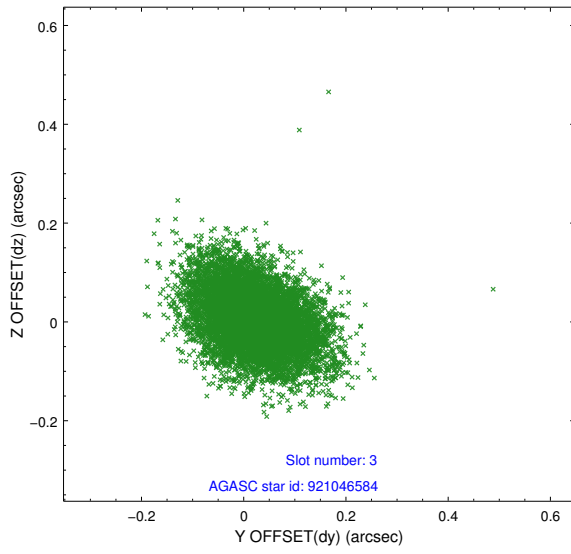


Slot Statistics

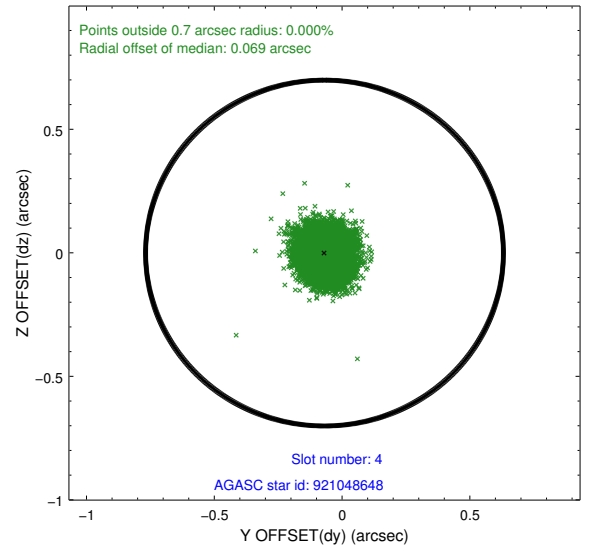
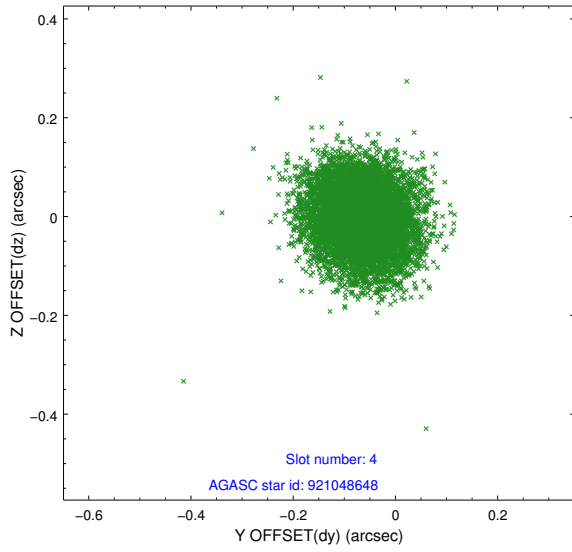
slot	status	id	mag	n_pts	med_dy	med_dz	dr1	dr2	ra	dec	mean_y	mean_z
0	FID	ACIS-S-1	7.19	3704	-0.014	-0.025	0.029	0.047	0.000000	0.000000	934.76	-1729.68
1	FID	ACIS-S-4	7.20	3704	0.048	0.007	0.011	0.017	0.000000	0.000000	2152.40	174.21
2	FID	ACIS-S-6	7.35	3704	-0.057	0.032	0.022	0.034	0.000000	0.000000	401.05	811.94
3	GUIDE	921046584	9.21	7402	0.020	0.006	0.095	0.155	53.976815	-36.314393	-840.69	1585.07
4	GUIDE	921048648	9.05	7406	-0.069	-0.001	0.084	0.136	53.884610	-35.870023	-1627.59	166.27
5	GUIDE	921967072	7.68	7407	-0.072	0.012	0.076	0.126	54.269247	-36.292226	-1553.63	2052.36
6	GUIDE	921050696	9.69	7398	-0.020	0.043	0.136	0.214	52.859413	-36.623296	2388.64	457.79
7	GUIDE	921968840	9.83	7397	0.142	-0.060	0.128	0.200	54.248141	-36.359344	-1354.01	2202.73

2.4 Star Slots

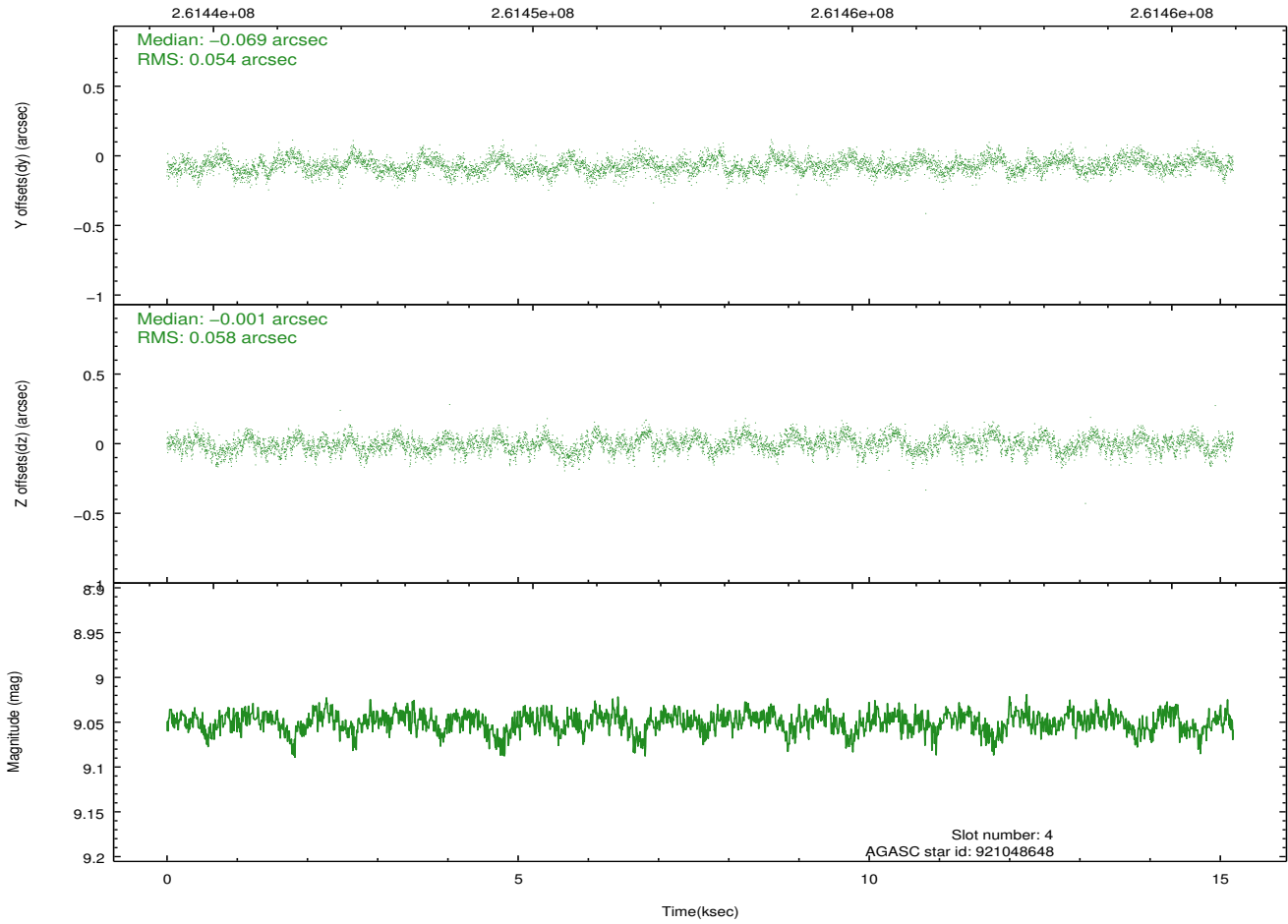
2.4.1 Slot 3



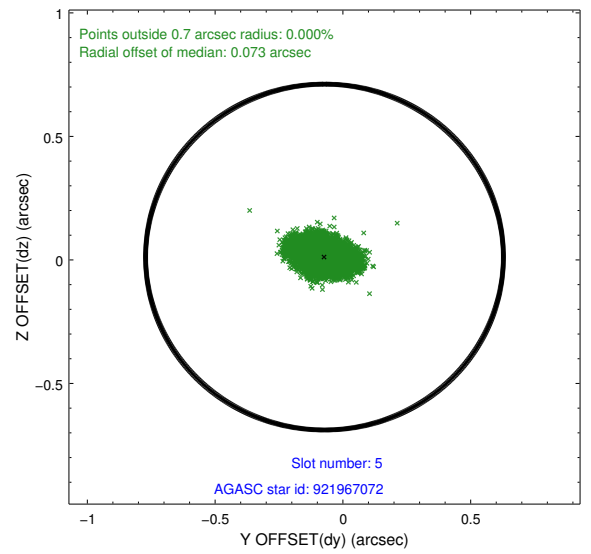
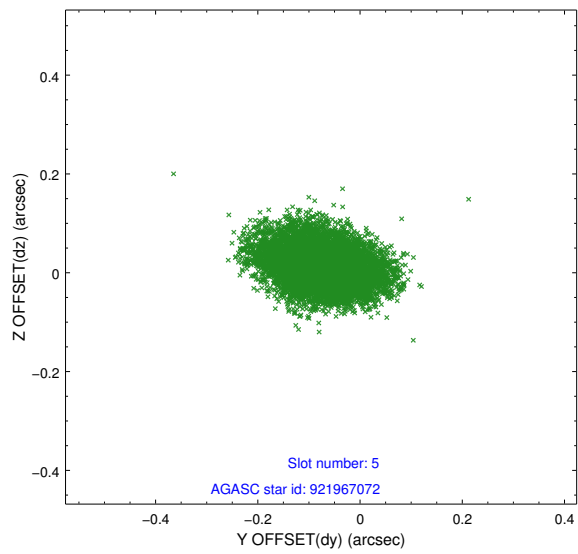
2.4.2 Slot 4



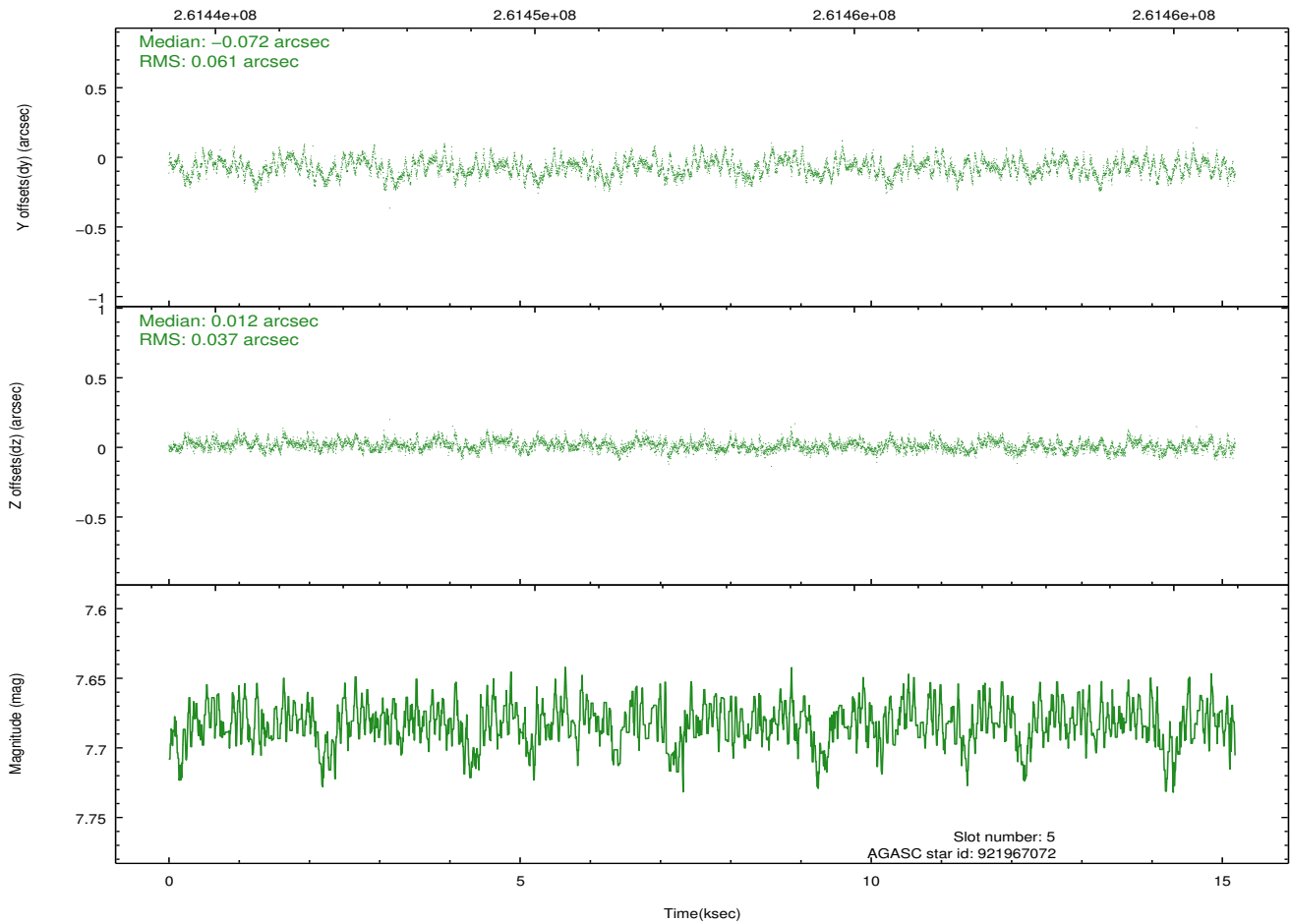
Time (s)



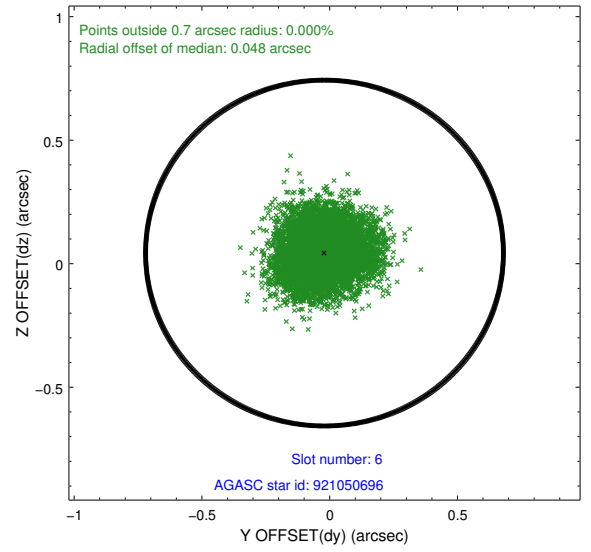
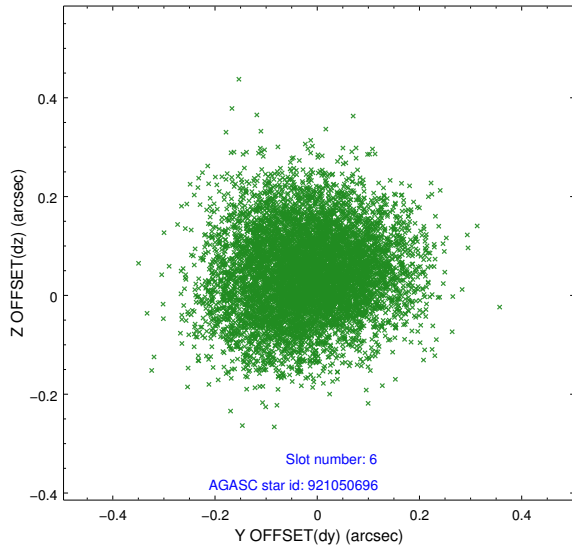
2.4.3 Slot 5



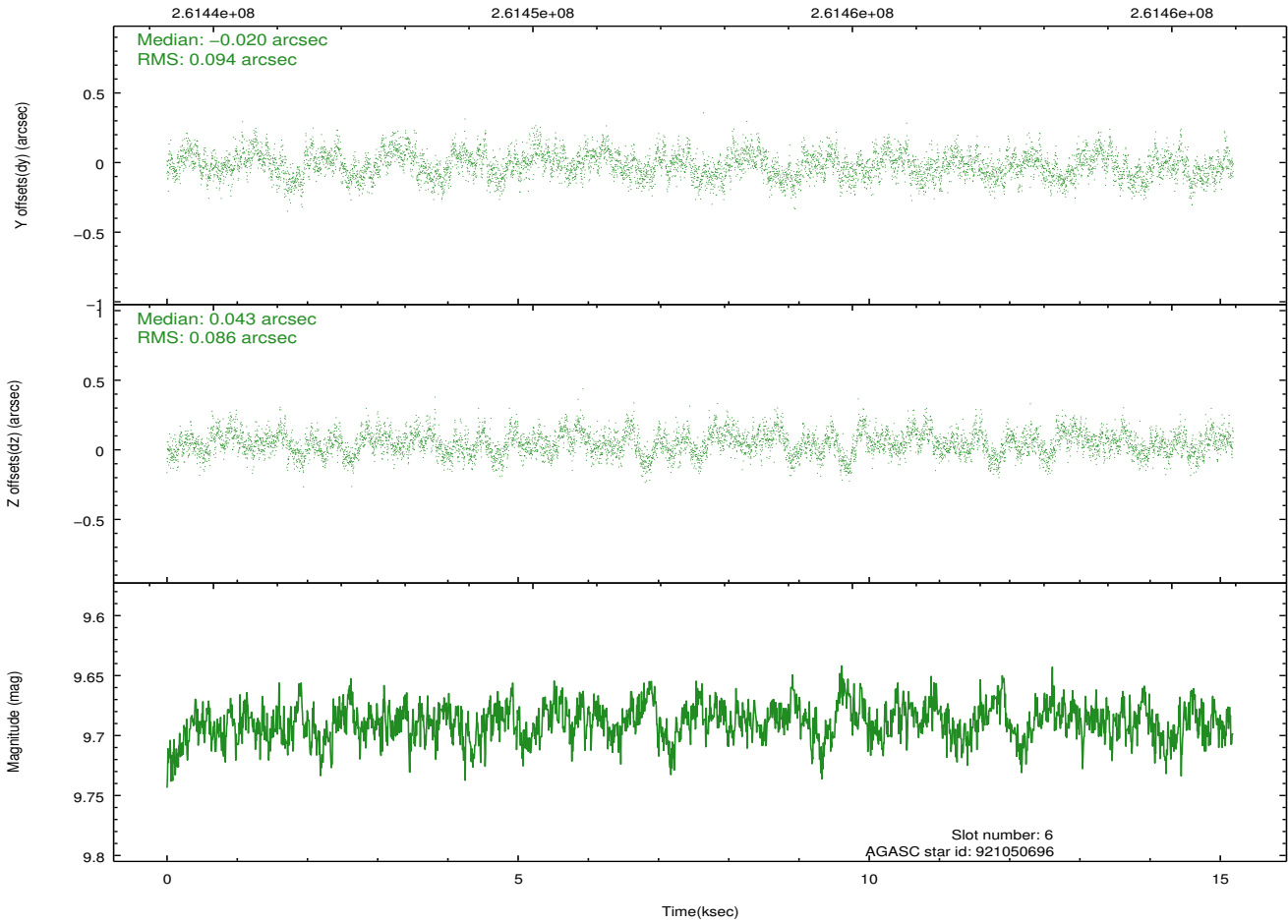
Time (s)



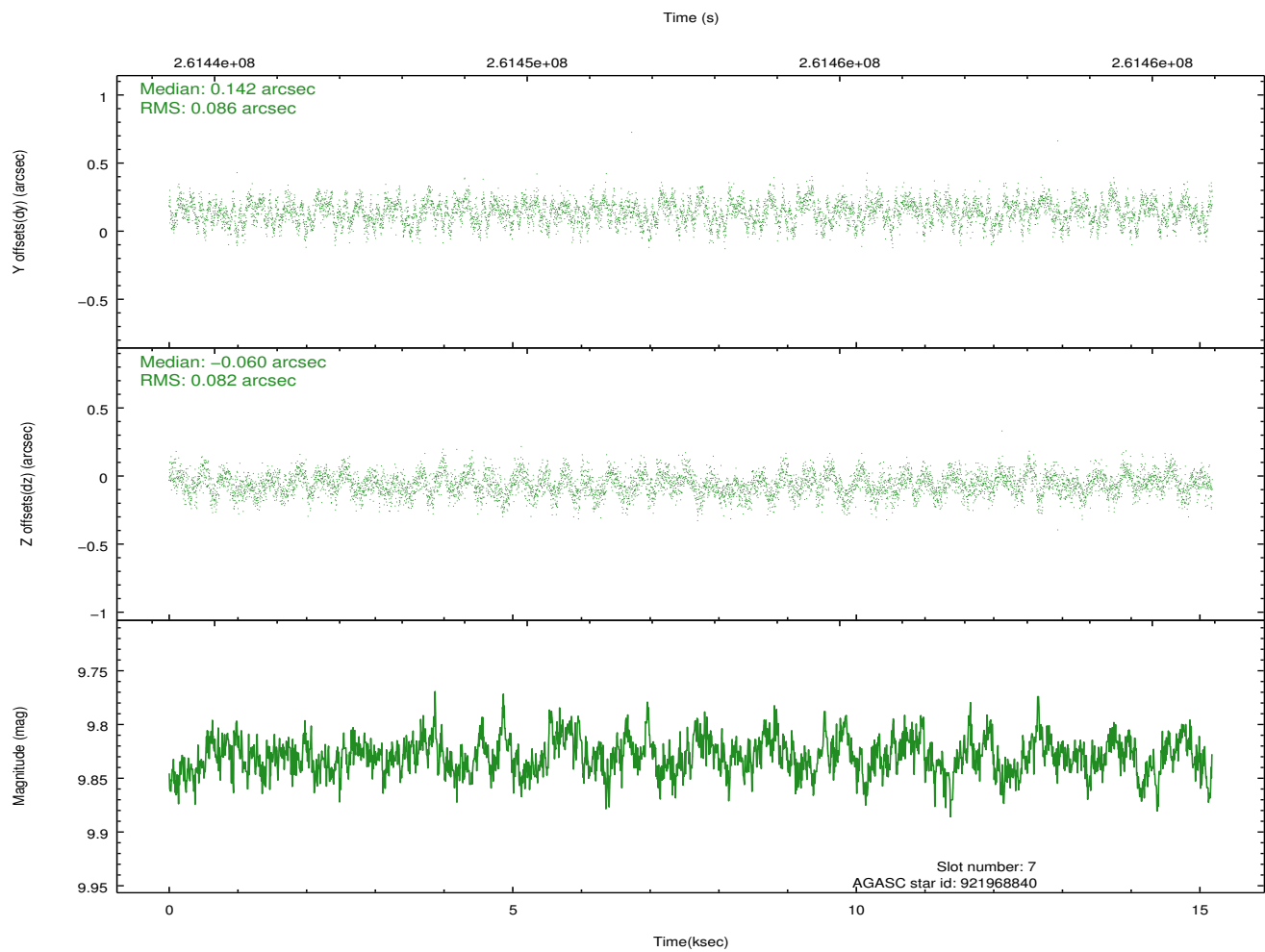
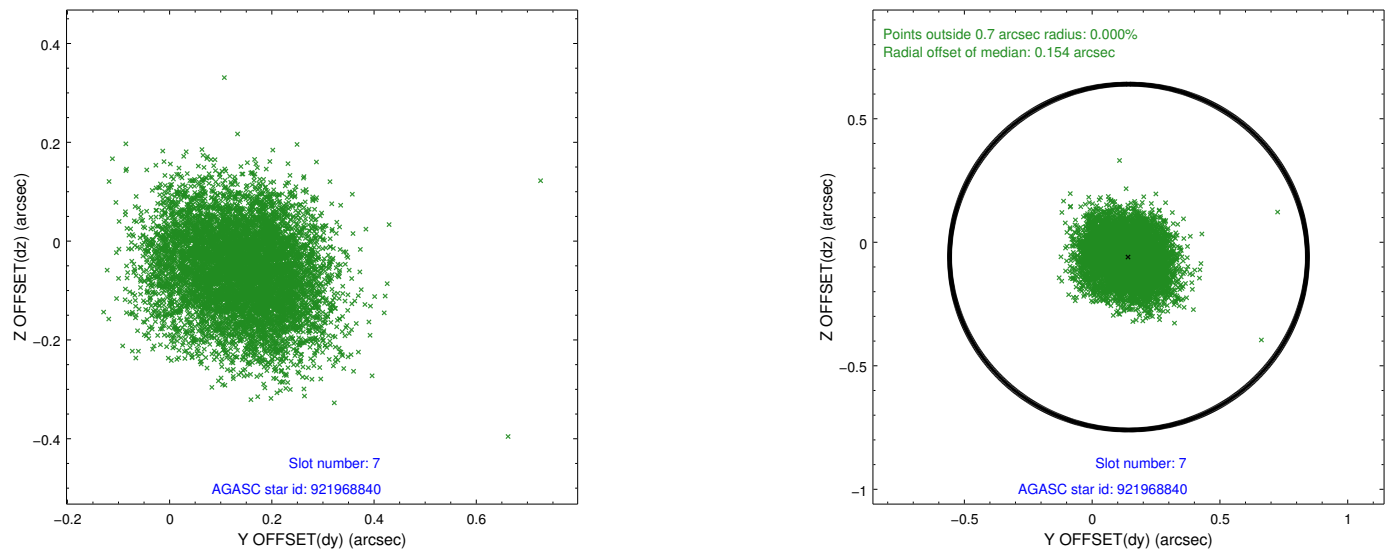
2.4.4 Slot 6



Time (s)

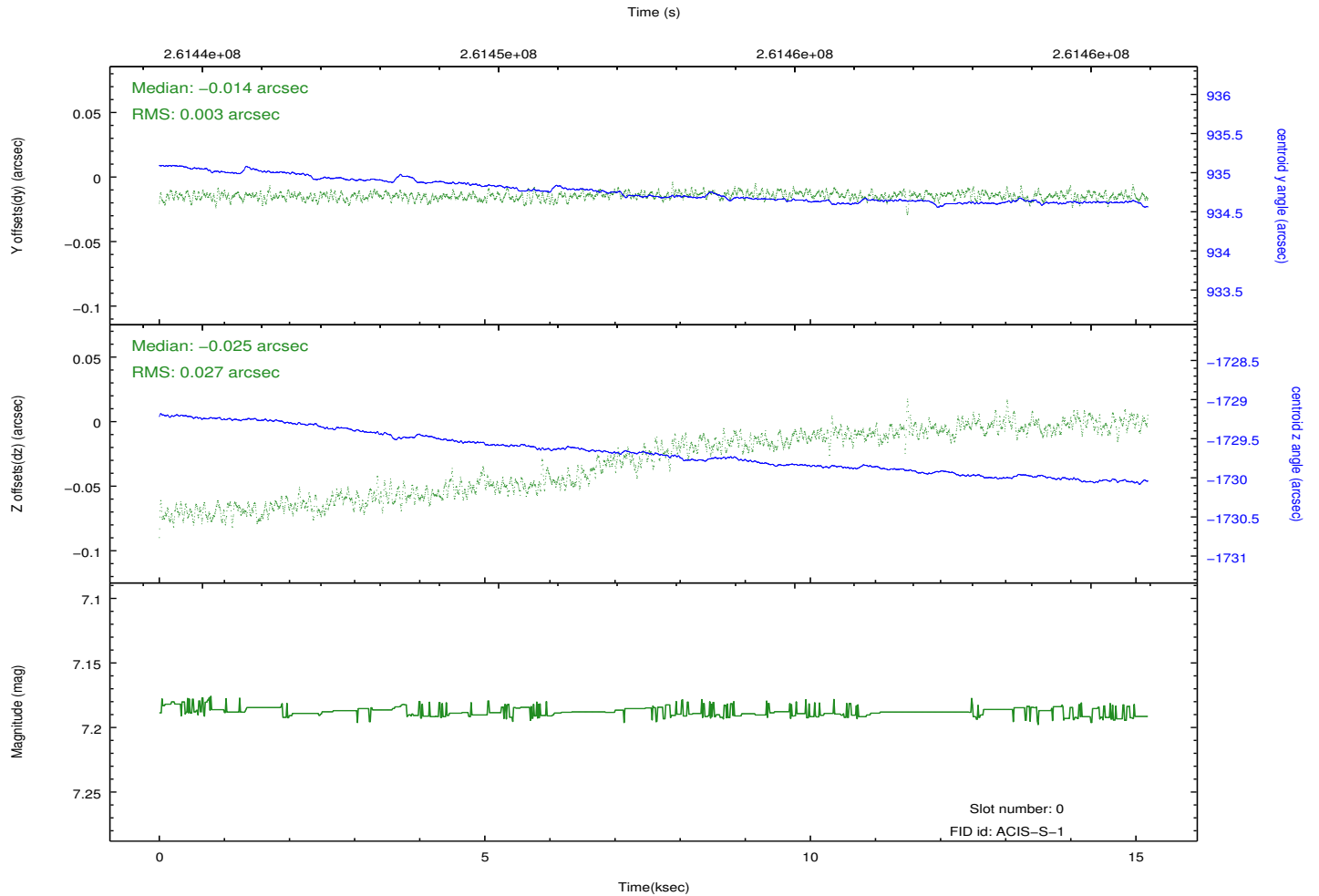
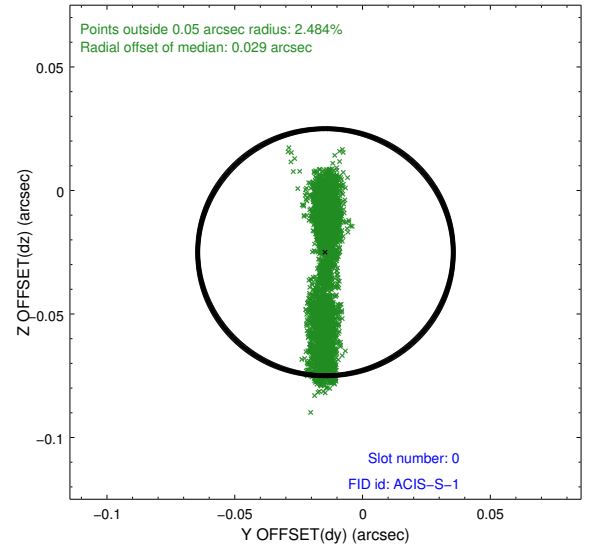
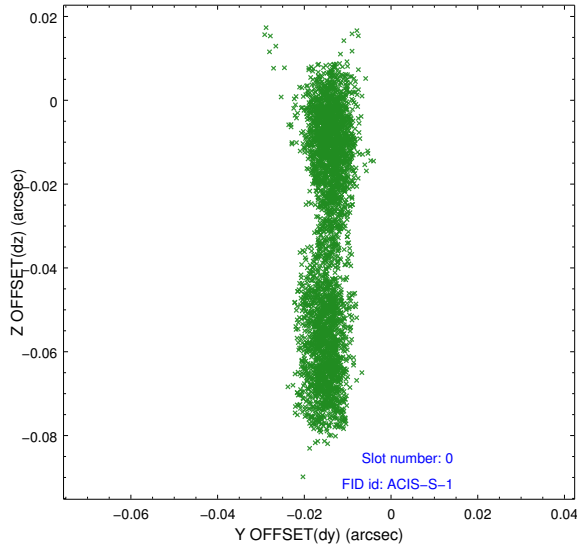


2.4.5 Slot 7

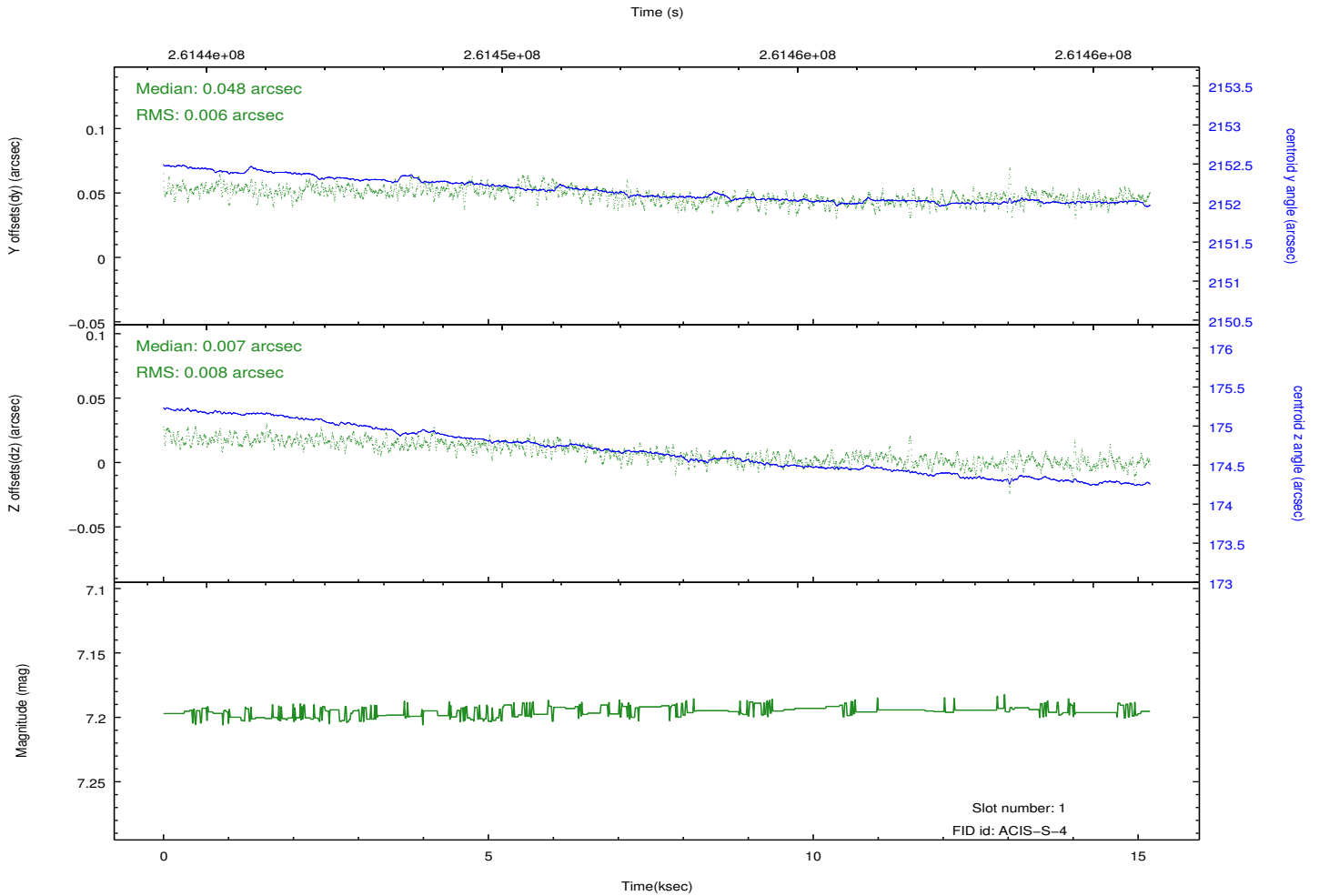
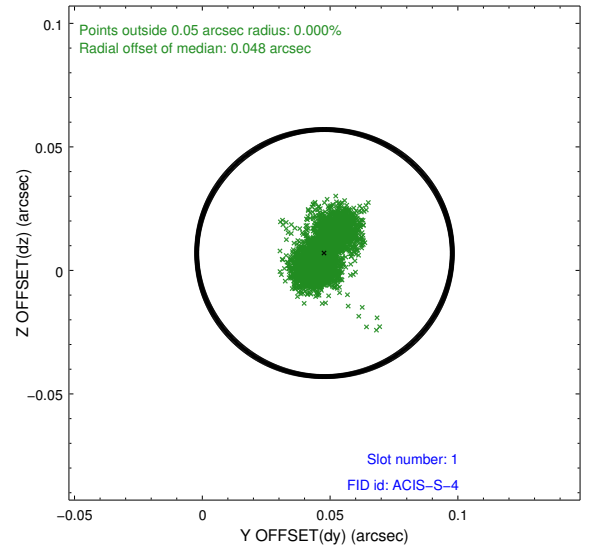
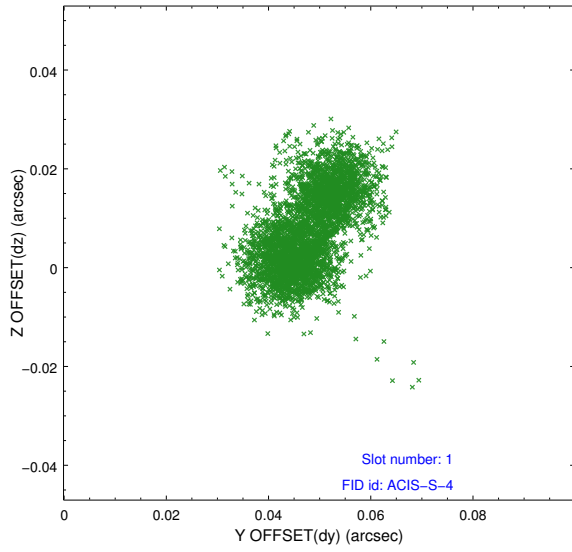


2.5 FID Slots

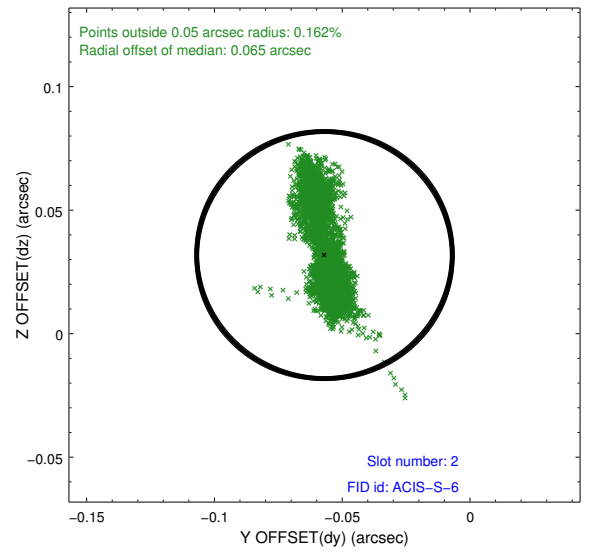
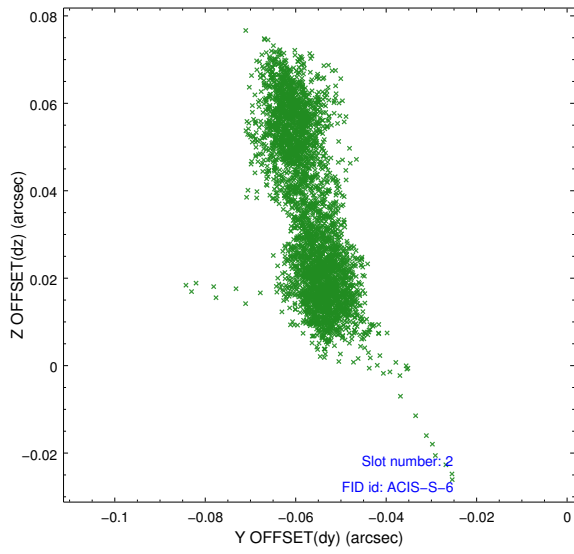
2.5.1 Slot 0



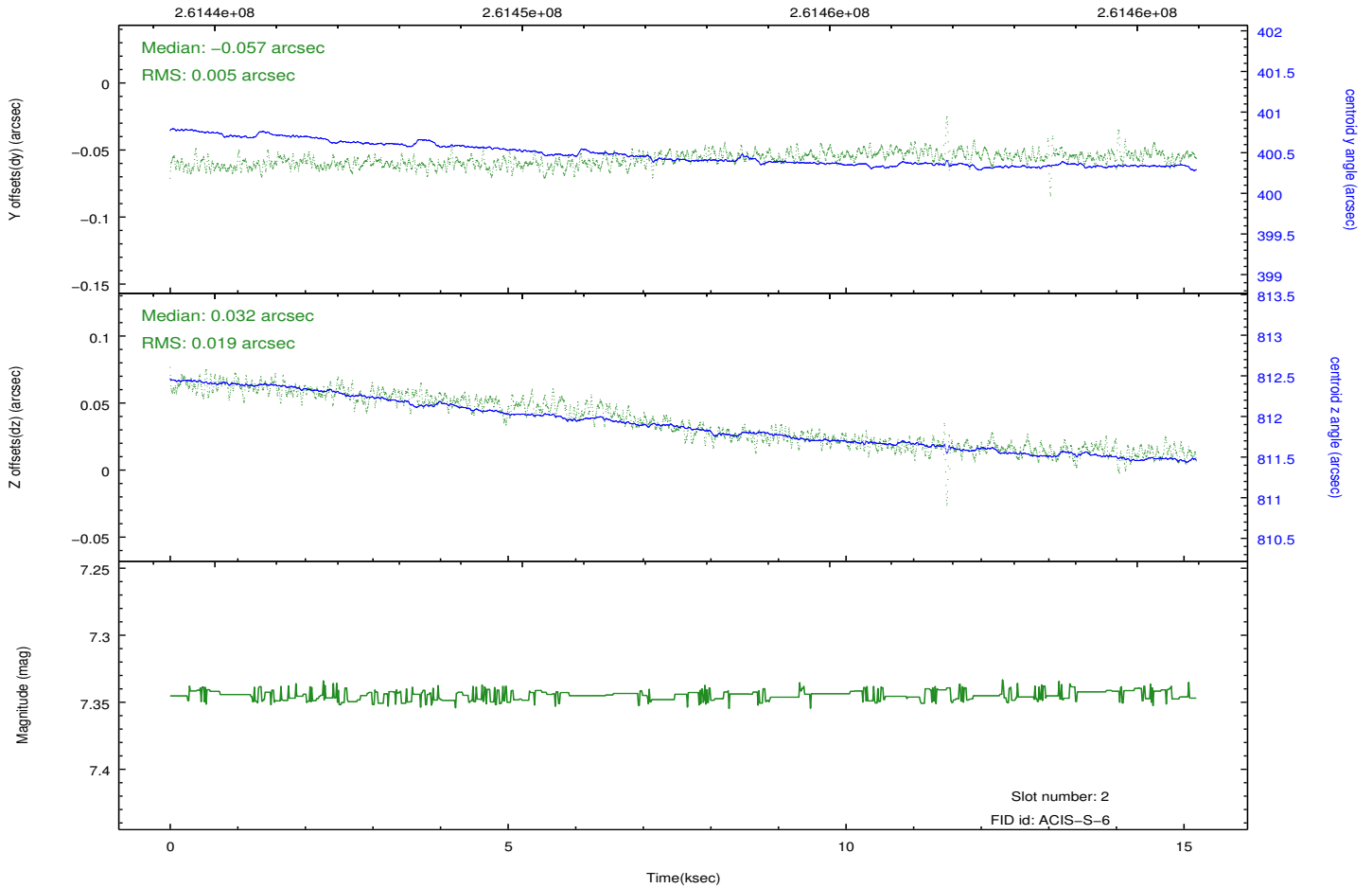
2.5.2 Slot 1



2.5.3 Slot 2



Time (s)



A Summary

A.1 Status

V&V Scientist	Jen Lauer
V&V Date (YYYY-MM-DD)	2012.03.30
V&V Edition	1
V&V Disposition and Status	OK
V&V Charge Time	15.1821999

A.2 Comments