

V&V Reference Report

L2 ASCDS Version : 8.4.3

Observation 7023 - L2 Version 2
Chandra X-Ray Center

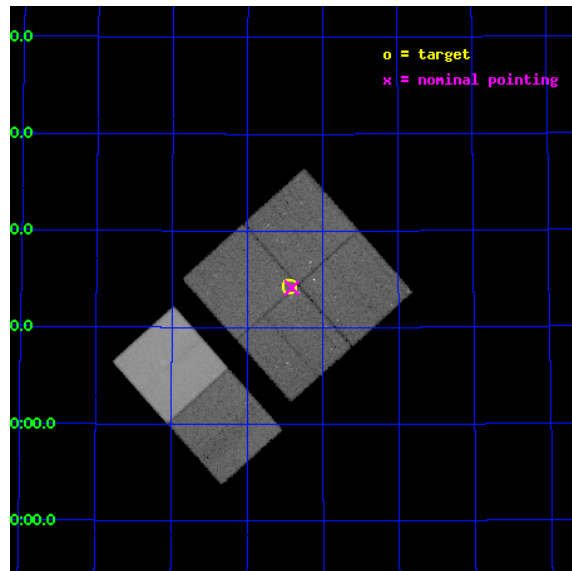
L2 Processing Date : Apr 4 2012

Contents

1	Front	2
2	OBI	3
2.1	OBI	3
2.1.1	Images	3
2.1.2	Bias	3
2.1.3	Parameters	4
2.1.4	Events	4
2.2	Compared Parameters	5
2.3	Aspect	6
2.4	Star Slots	9
2.4.1	Slot 3	9
2.4.2	Slot 4	10
2.4.3	Slot 5	11
2.4.4	Slot 6	12
2.4.5	Slot 7	13
2.5	FID Slots	14
2.5.1	Slot 0	14
2.5.2	Slot 1	15
2.5.3	Slot 2	16
A	Summary	17
A.1	Status	17
A.2	Comments	17

1 Front

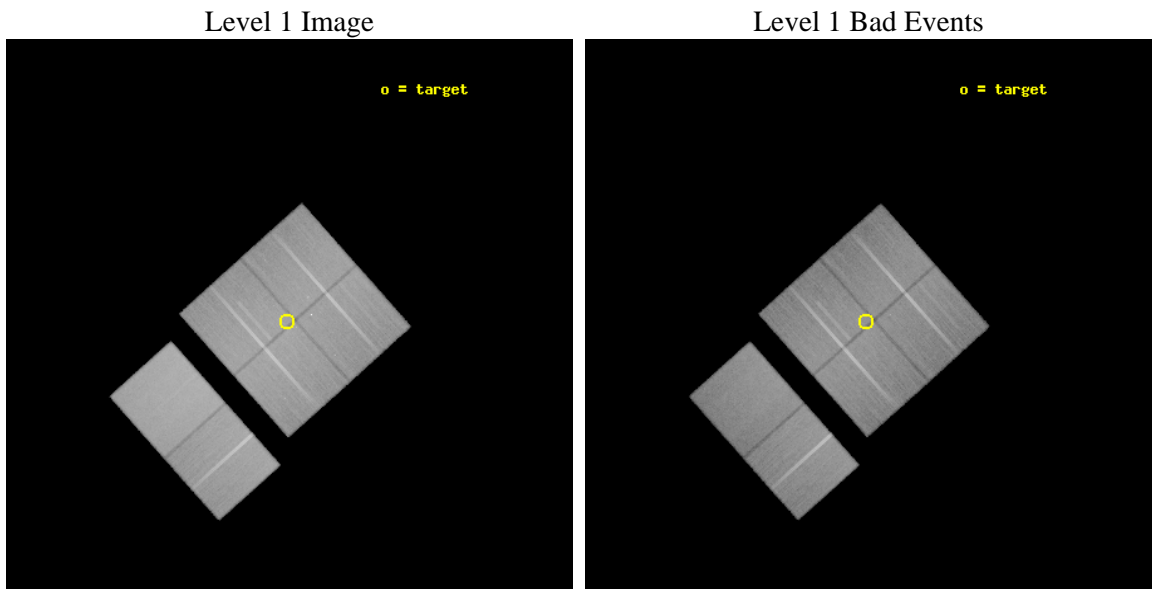
seq_num	900439	Sequence number
obs_id	7023	Observation id
title	Tracing the X-ray cosmic web at z=0.3	Proposal title
observer	Dr. Roberto Gilli	Principal investigator
object	Abell 1995 Field 3	Source name
dtcycle	0	
cycle	P	events from which exps? Prim/Second/Both
ra_targ	222.610833	Observer's specified target RA [deg]
dec_targ	58.237389	Observer's specified target Dec [deg]
ra_nom	222.6028478733	Nominal RA [deg]
dec_nom	58.235396134046	Nominal Dec [deg]
roll_nom	228.22739191748	Nominal Roll [deg]
revision	2	Processing version of data
ontime	49679.999814928	Sum of GTIs [s]
livetime	49050.921743566	Livetime [s]
ontime0	49673.517854363	Sum of GTIs [s]
ontime1	49670.276864201	Sum of GTIs [s]
ontime2	49676.758844614	Sum of GTIs [s]
ontime3	49679.999814928	Sum of GTIs [s]
ontime6	49679.999814928	Sum of GTIs [s]
ontime7	49679.999814928	Sum of GTIs [s]
l2events	490108	Number of level 2 events



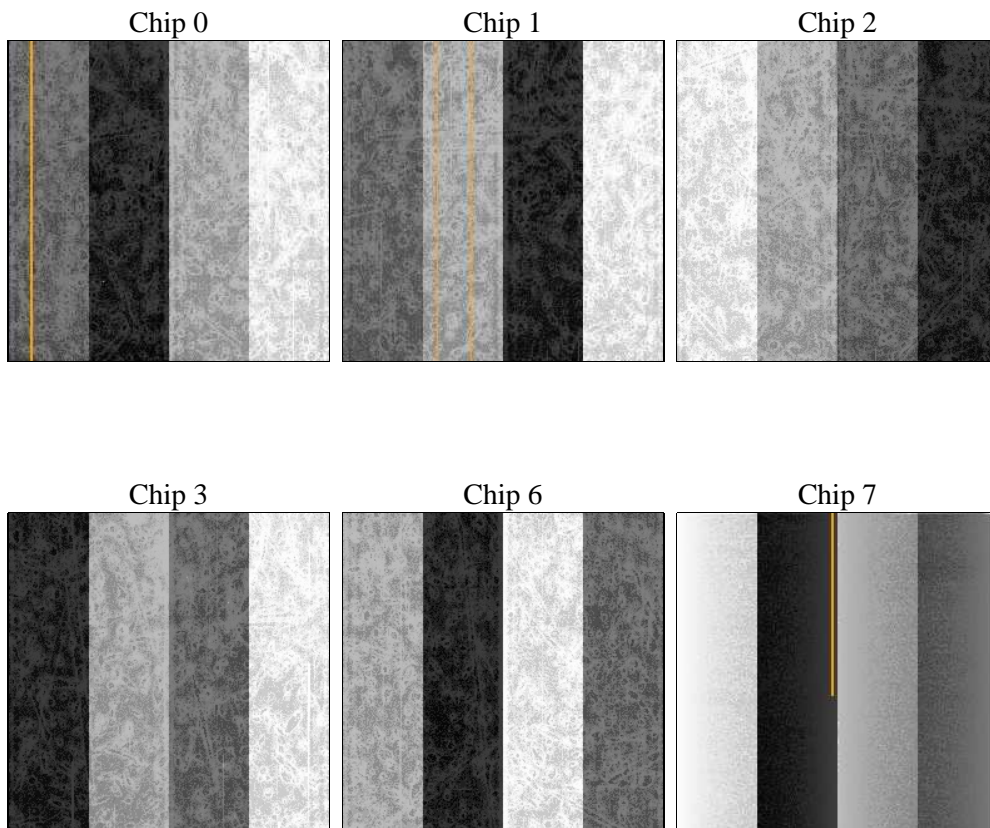
2 OBI

2.1 OBI

2.1.1 Images



2.1.2 Bias



2.1.3 Parameters

obi_num	0	Obi number	sched_exp_time	49500.000000	[s] Scheduled observation exposure time
ascdsver	8.4.3.1	Processing system revision	ontime	49679.999814928	Sum of GTIs [s]
caldbver	4.4.9	 	ontime0	49673.517854363	Sum of GTIs [s]
date	2012-04-04T05:12:08	Date and time of file creation	ontime1	49670.276864201	Sum of GTIs [s]
revision	2	Processing version of data	ontime2	49676.758844614	Sum of GTIs [s]
			ontime3	49679.999814928	Sum of GTIs [s]
			ontime6	49679.999814928	Sum of GTIs [s]
			ontime7	49679.999814928	Sum of GTIs [s]
			l1events	2874278	Number of level 1 events

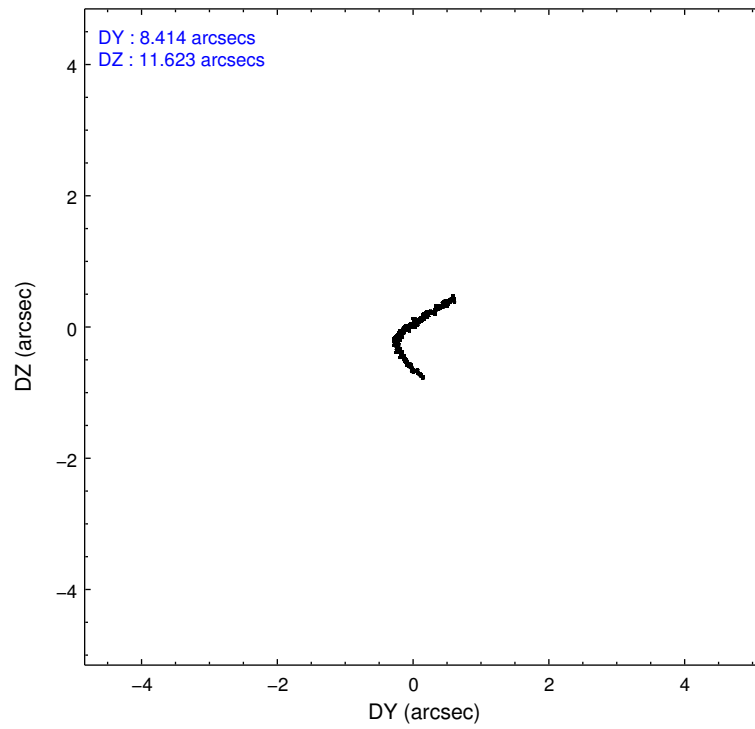
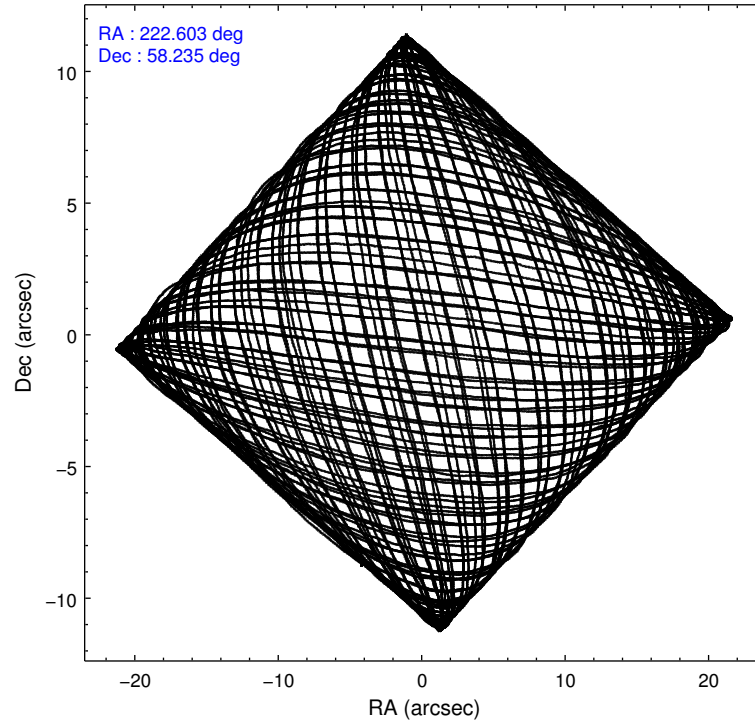
2.1.4 Events

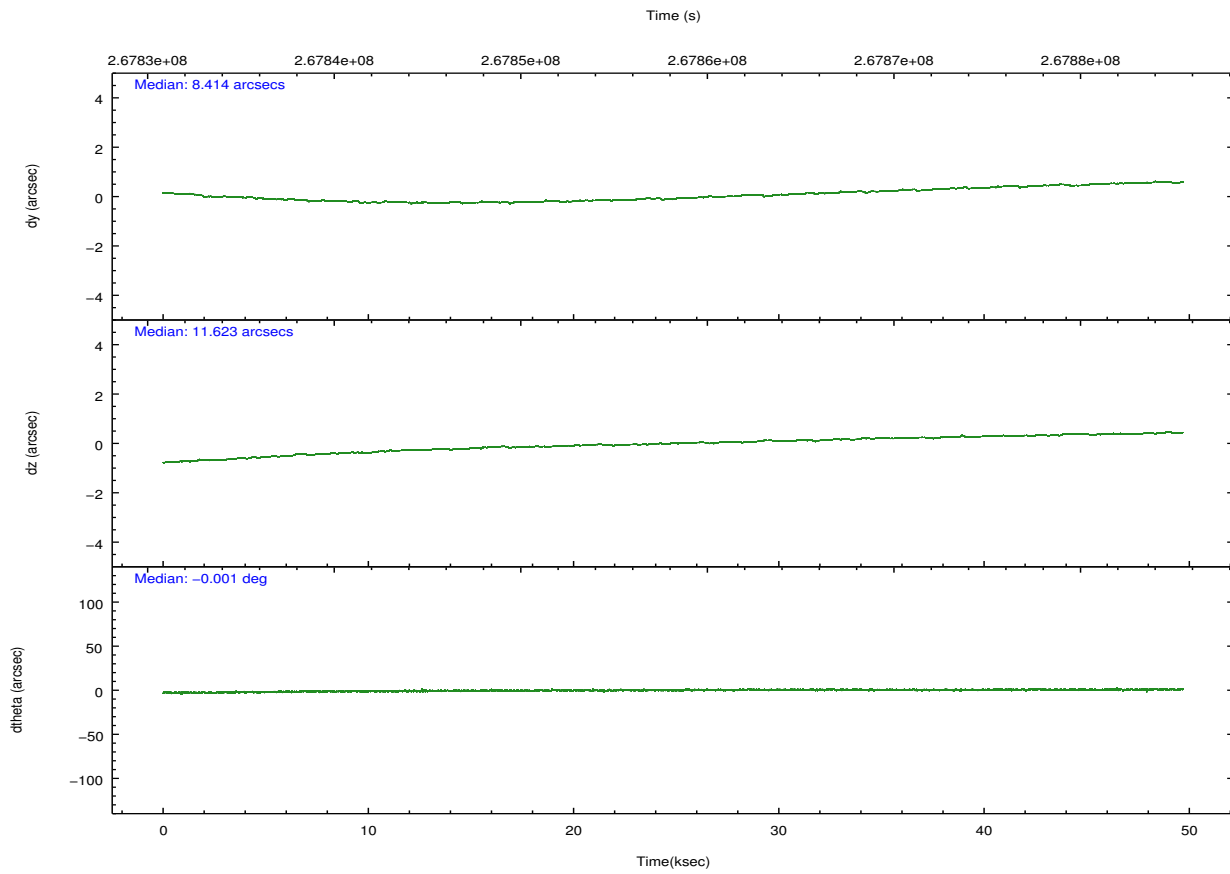
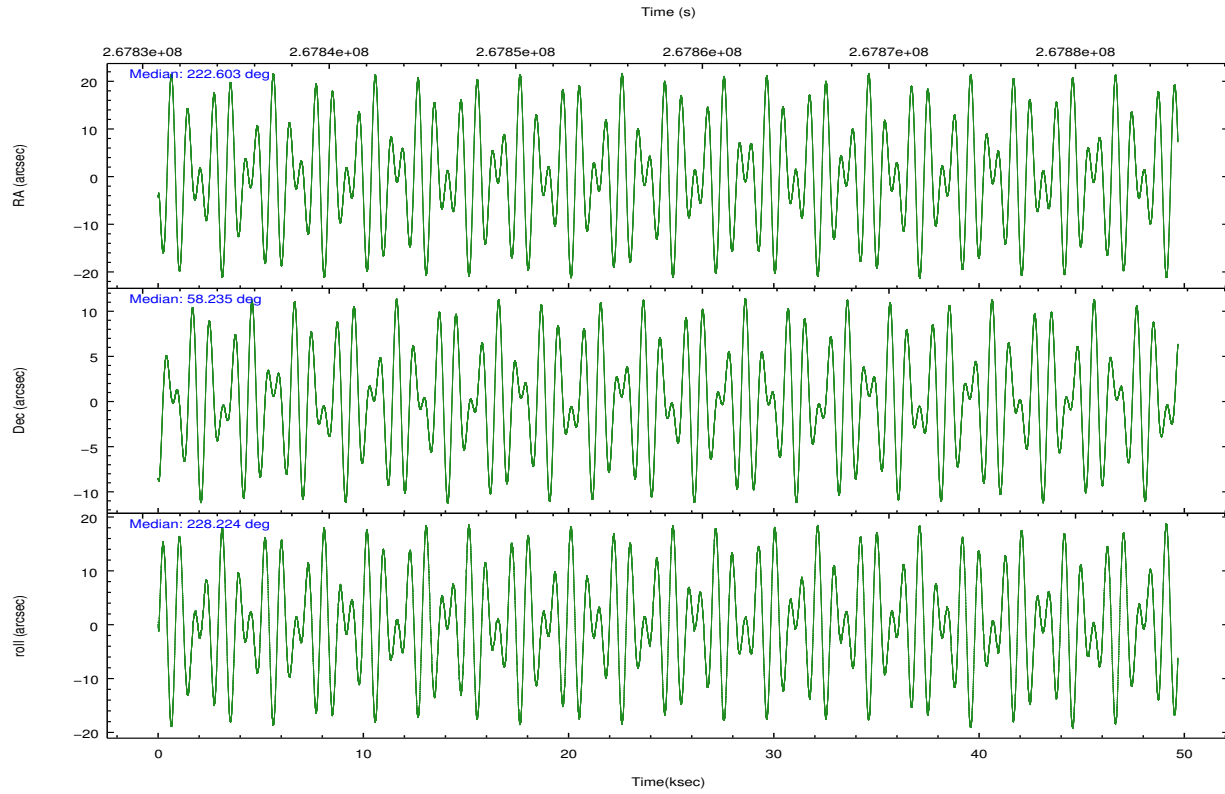
	ccd 0	ccd 1	ccd 2	ccd 3	ccd 6	ccd 7		ccd 0	ccd 1	ccd 2	ccd 3	ccd 6	ccd 7
level 1 events	425063	425352	464583	456898	480352	622030	grade 0 events	25817	22552	24669	23023	20821	23109
rejected events	367482	367751	410389	403930	426316	363942		6%	5%	5%	5%	4%	3%
rejected %	86%	86%	88%	88%	88%	58%	grade 1 events	317	215	283	304	239	596
								0%	0%	0%	0%	0%	0%
							grade 2 events	12340	12960	11264	10578	11896	52596
								2%	3%	2%	2%	2%	8%
							grade 3 events	5356	5648	4993	5272	5334	22558
								1%	1%	1%	1%	1%	3%
							grade 4 events	4919	5495	4929	5046	5058	22509
								1%	1%	1%	1%	1%	3%
							grade 5 events	17760	19584	17549	20638	21783	59253
								4%	4%	3%	4%	4%	9%
							grade 6 events	9465	11277	8680	9395	11246	138806
								2%	2%	1%	2%	2%	22%
							grade 7 events	349089	347621	392216	382642	403975	302603
								82%	81%	84%	83%	84%	48%

2.2 Compared Parameters

Parameter	Planned	Actual	Parameter	Planned	Actual
Instrument	ACIS	ACIS	Obspar format version number	7	7
Detector	ACIS-012367	ACIS-012367	Obspar file type	PREDICTED	ACTUAL
Grating	NONE	NONE	Obspar update status	NONE	UPDATED
Data mode	VFAINT	VFAINT	Number of optional ACIS chips dropped	0	0
Observation mode	POINTING	POINTING	On-chip summing requested	N	N
[deg] Pointing RA	222.613274	222.6028478733012	Subarray requested	NONE	NONE
[deg] Pointing Dec	58.262241	58.2353961340462	Alternating exposures requested	N	N
[deg] Pointing Roll	228.009841	228.2273919174753	[s] Primary exposure time	0.000000	3.2
[mm] SIM focus pos	-0.782348	-0.7809083437167272			
[mm] SIM defocus	0	0.001439871863259334			
[mm] SIM translation stage pos	-233.592463	-233.5874344608287			
[mm] SIM translation stage offset	0	-0.005018542100998502			
[s] Observation start time (MET)	267833501.184000	267832283.66906			
Observation start date	2006-06-27T22:10:36	2006-06-27T21:51:23			
[s] Observation end time (MET)	267883001.184000	267883967.24648			
Observation end date	2006-06-28T11:55:36	2006-06-28T12:12:47			
Read mode	TIMED	TIMED			

2.3 Aspect



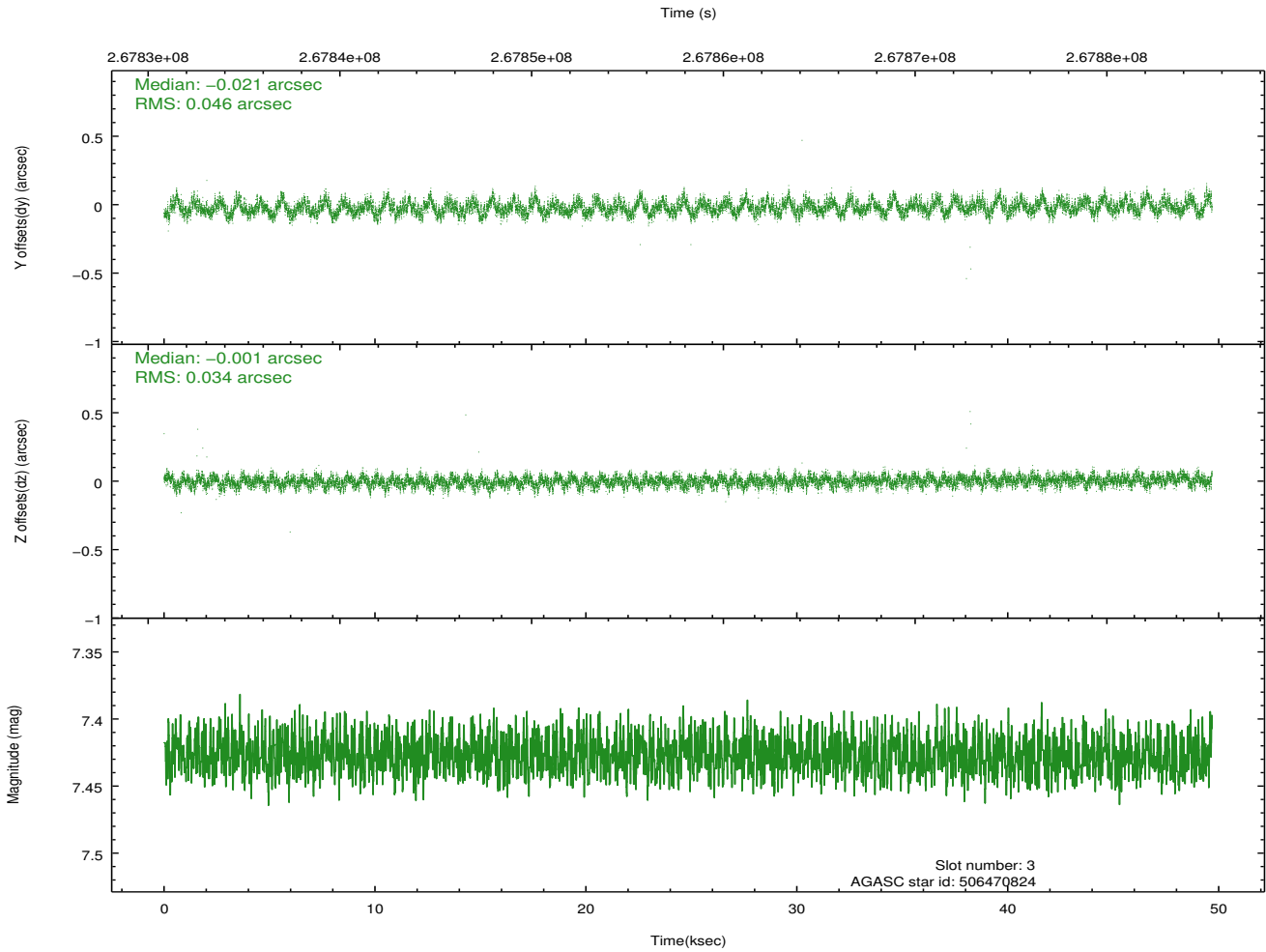
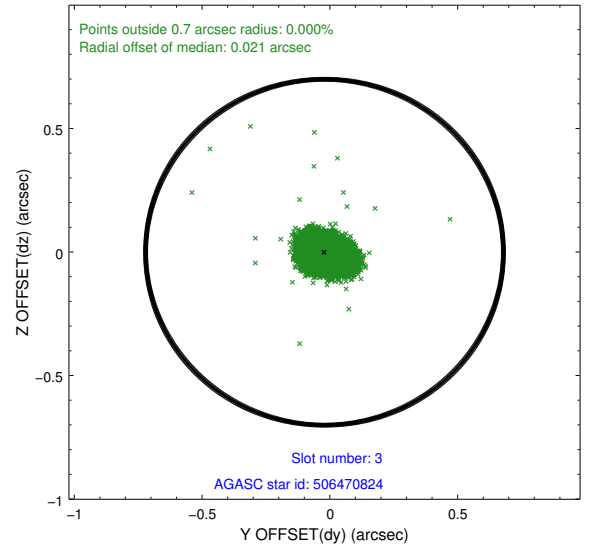
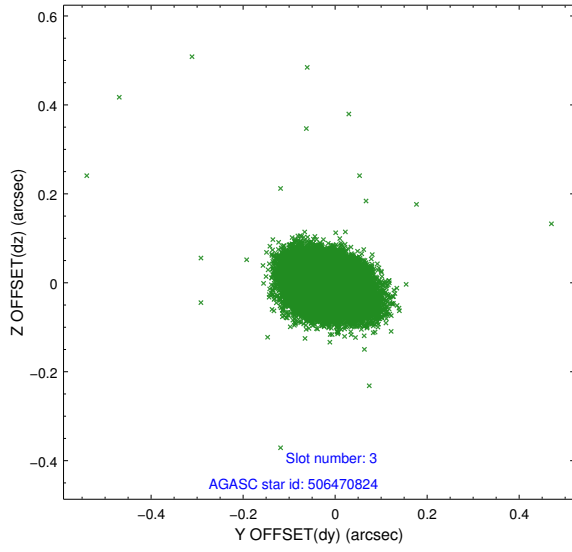


Slot Statistics

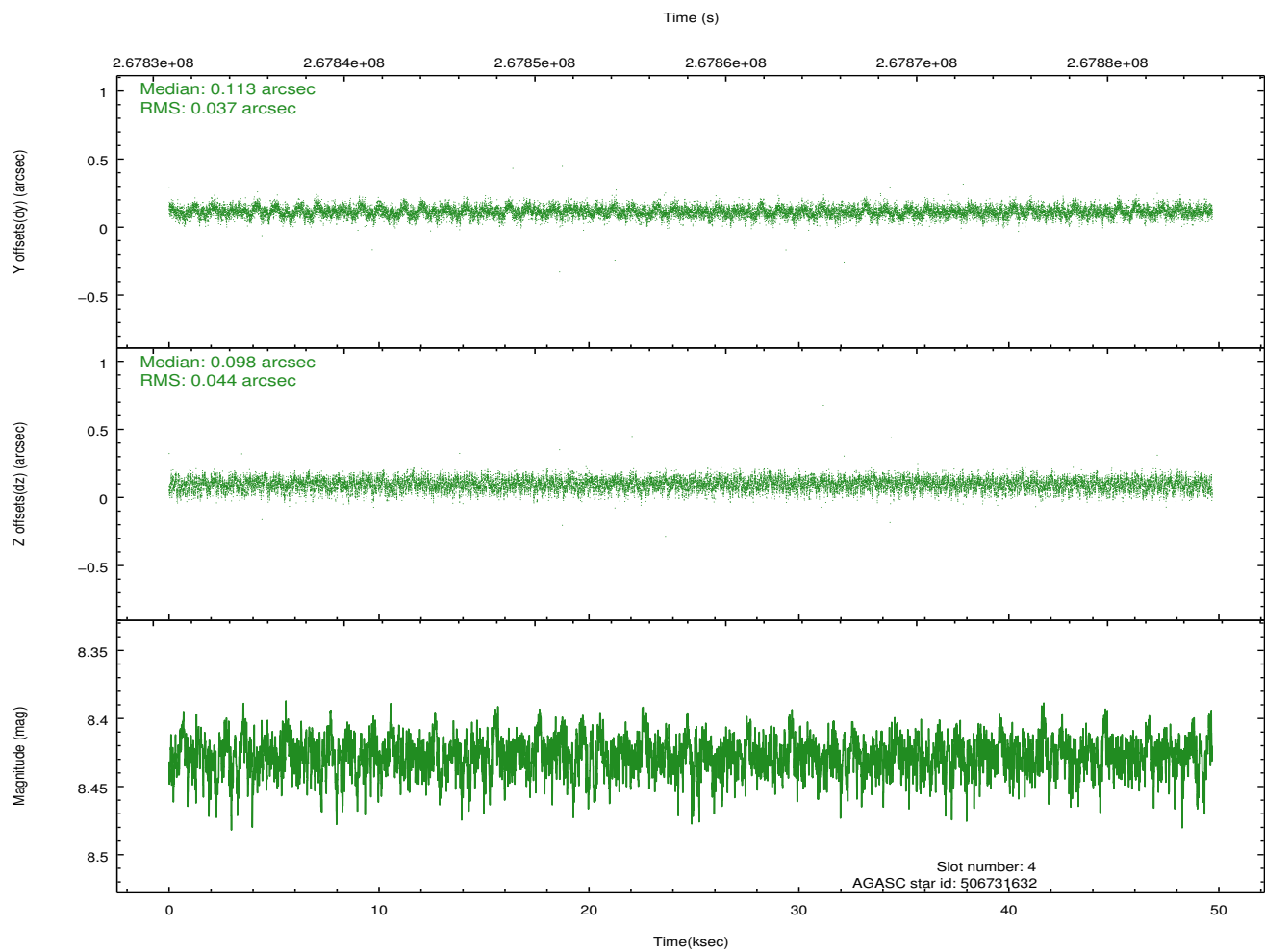
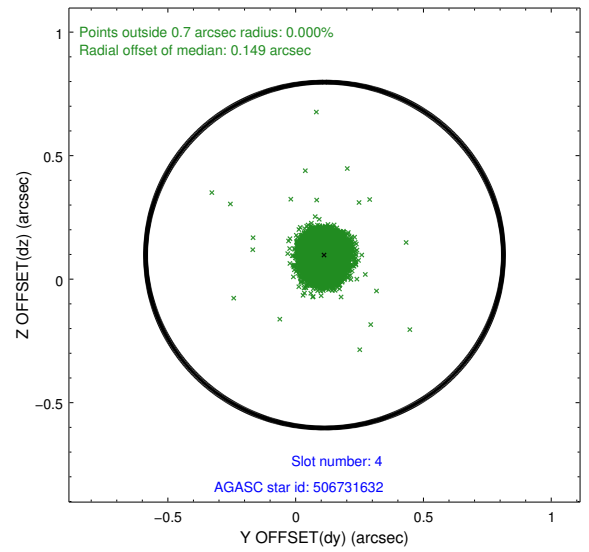
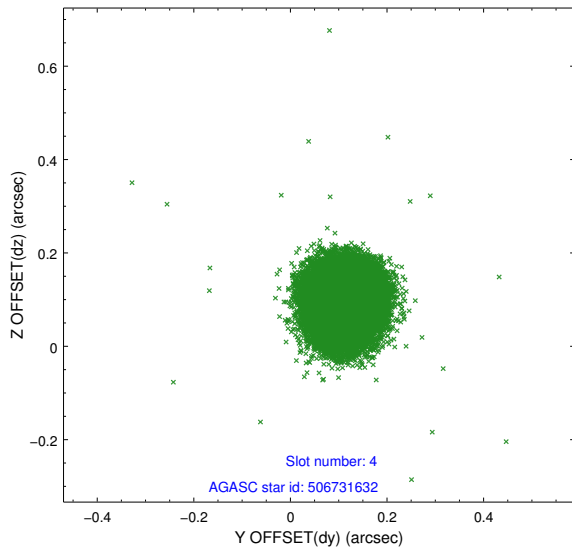
slot	status	id	mag	n_pts	med_dy	med_dz	dr1	dr2	ra	dec	mean_y	mean_z
0	FID	ACIS-I-1	7.24	12116	0.062	-0.053	0.008	0.013	0.000000	0.000000	931.21	-835.16
1	FID	ACIS-I-5	7.23	12115	-0.187	0.066	0.016	0.026	0.000000	0.000000	-1817.13	1062.50
2	FID	ACIS-I-6	7.24	12118	0.034	0.057	0.013	0.022	0.000000	0.000000	396.78	1706.94
3	GUIDE	506470824	7.43	24235	-0.021	-0.001	0.060	0.098	222.702112	57.410951	2162.60	2178.24
4	GUIDE	506731632	8.43	24235	0.113	0.098	0.061	0.097	222.088013	58.057364	1214.97	-252.45
5	GUIDE	506864456	7.93	24236	0.043	-0.161	0.054	0.087	222.497108	57.914314	1079.63	672.76
6	GUIDE	506866824	8.53	24235	-0.098	0.103	0.068	0.109	223.367760	58.198161	-792.05	1213.05
7	GUIDE	506861776	8.70	24222	-0.040	-0.036	0.077	0.121	222.438135	58.830368	-1302.20	-1611.83

2.4 Star Slots

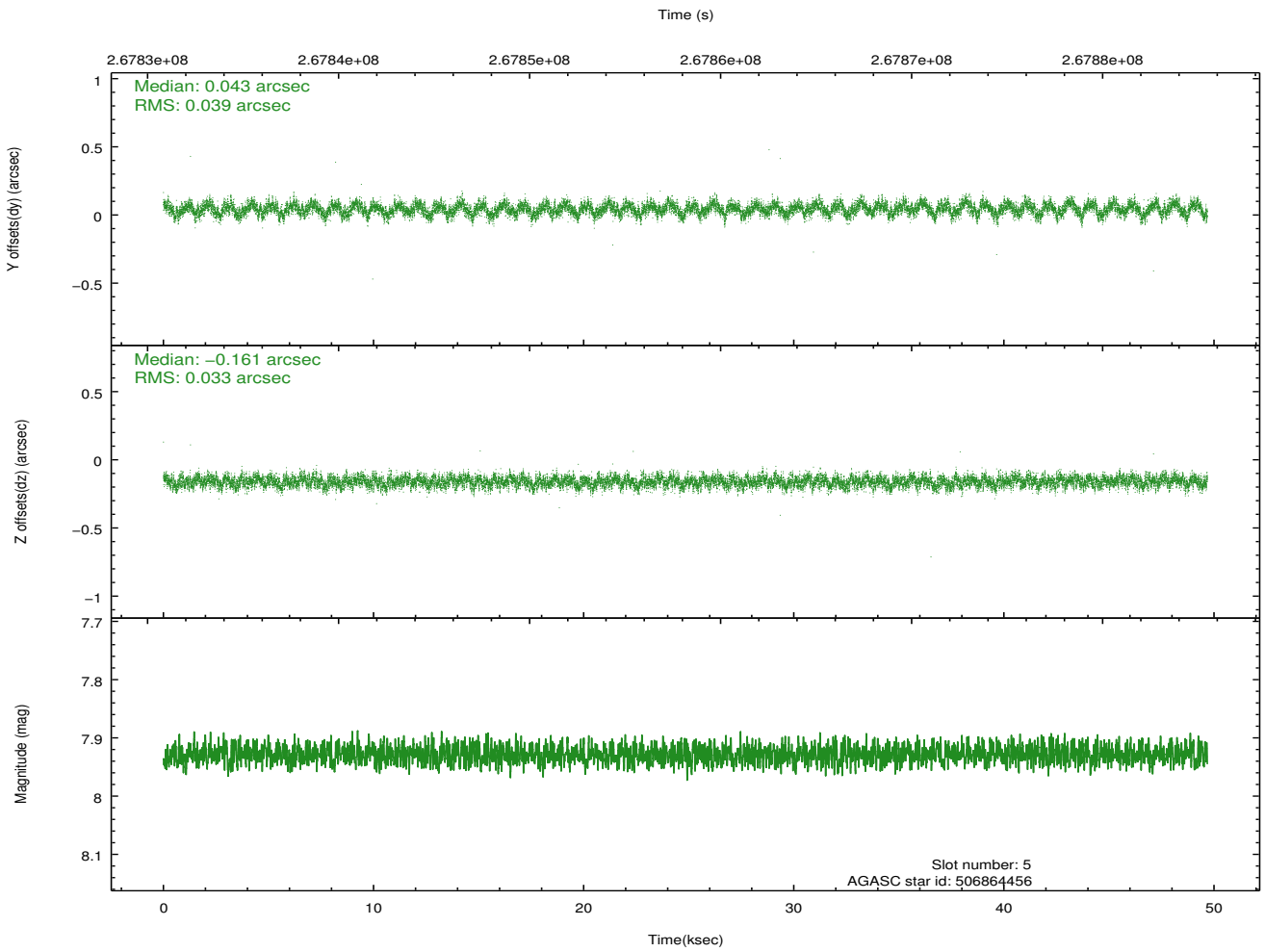
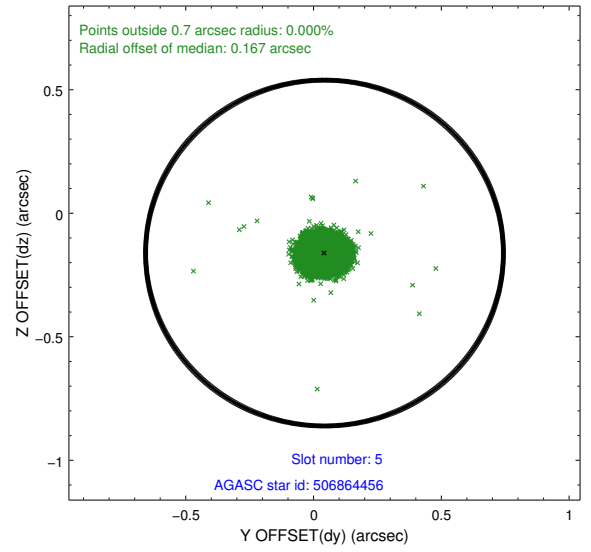
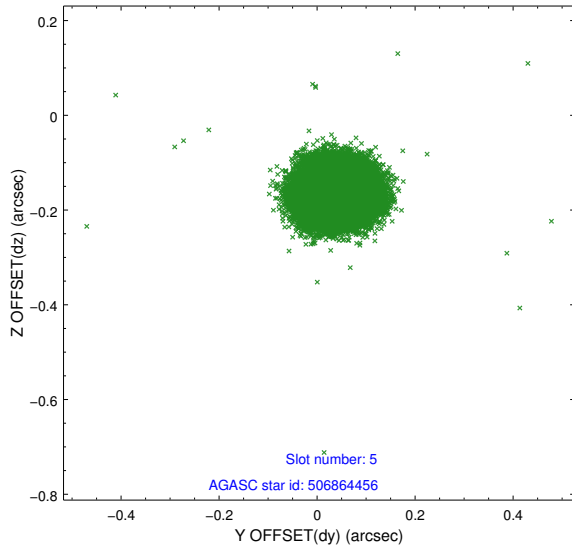
2.4.1 Slot 3



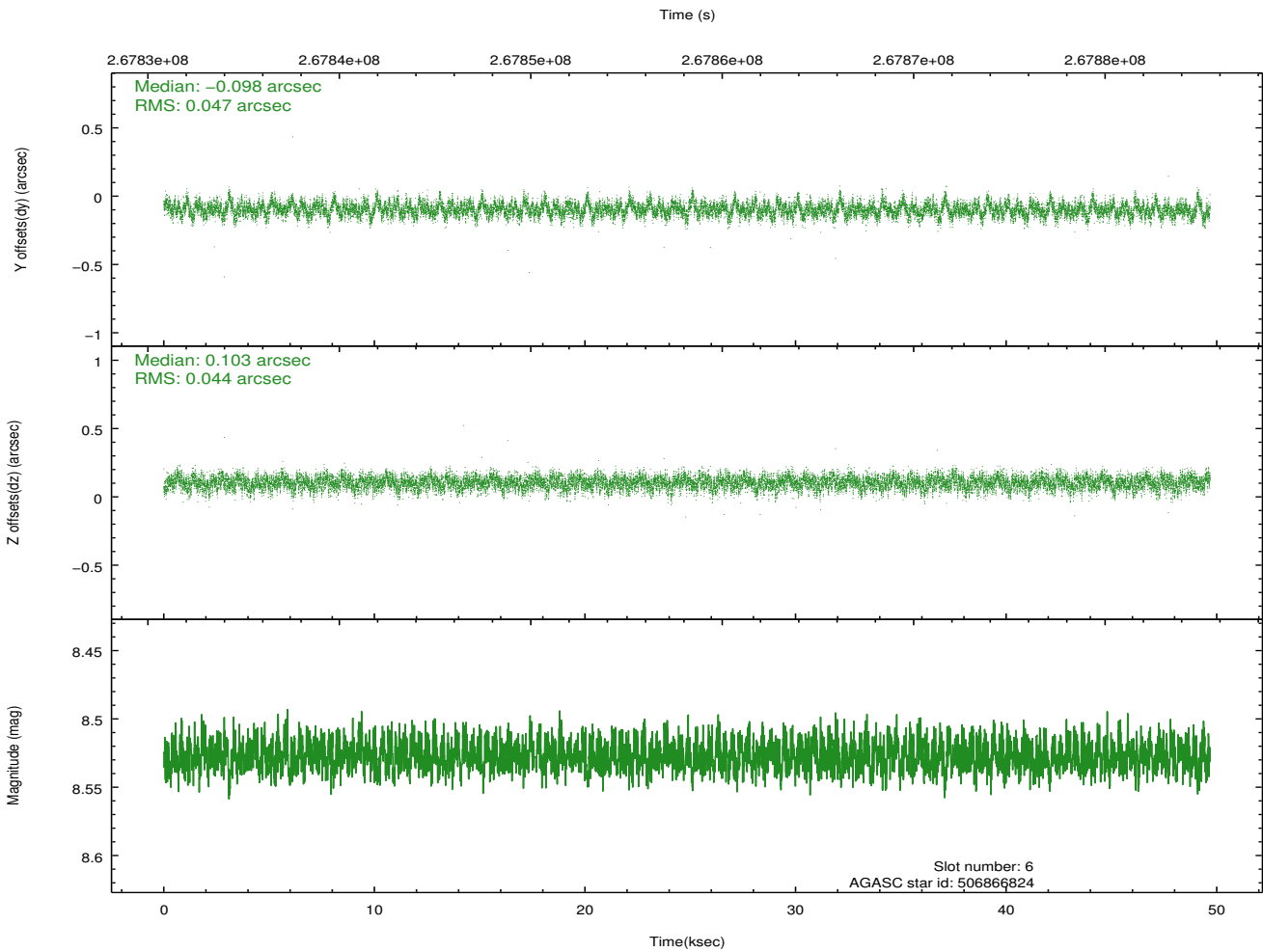
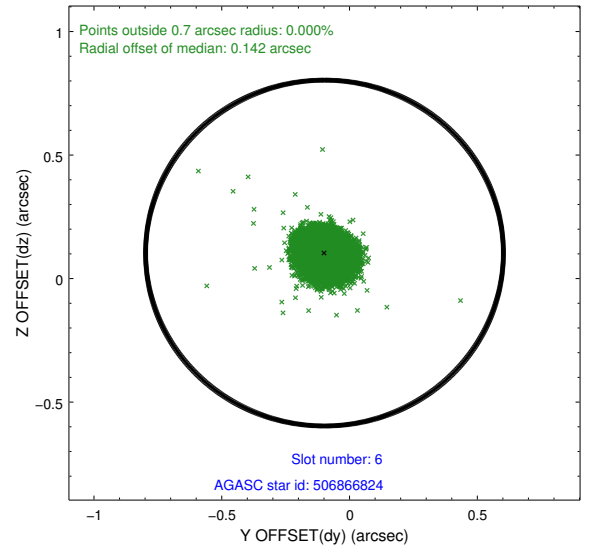
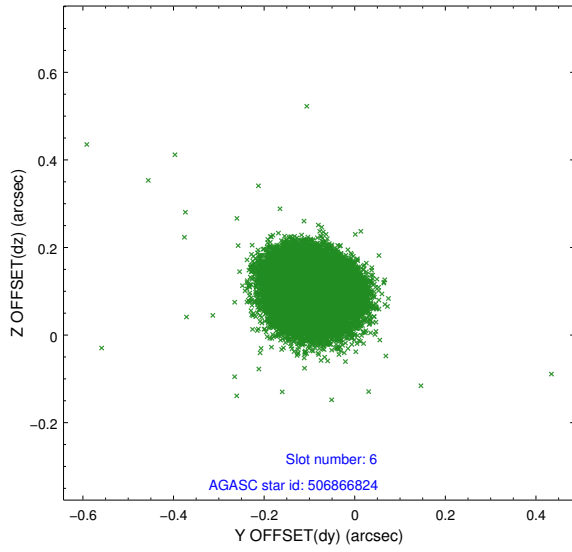
2.4.2 Slot 4



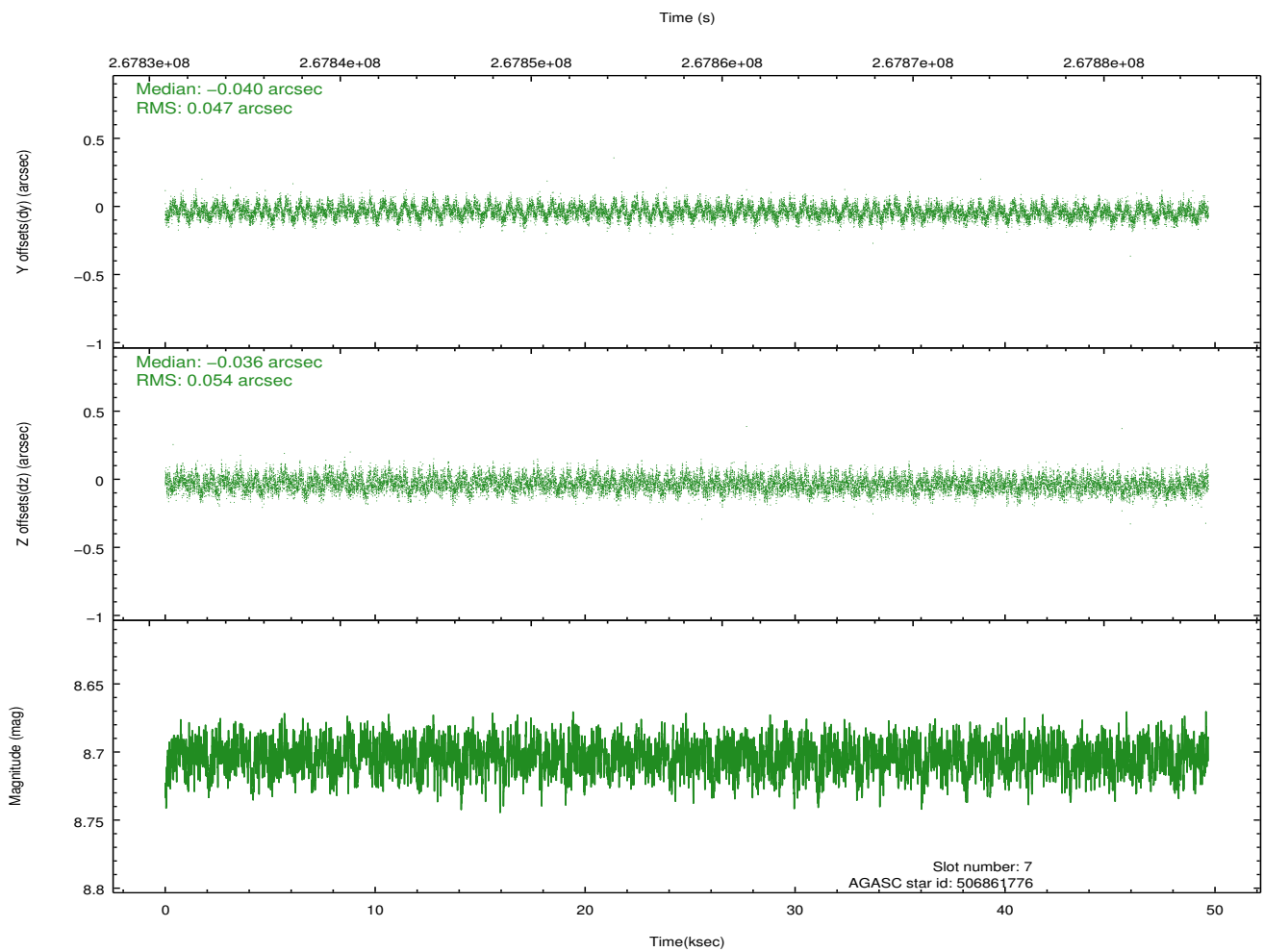
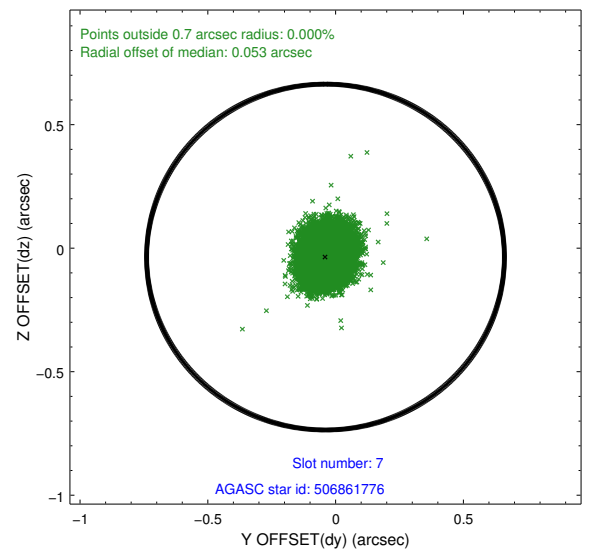
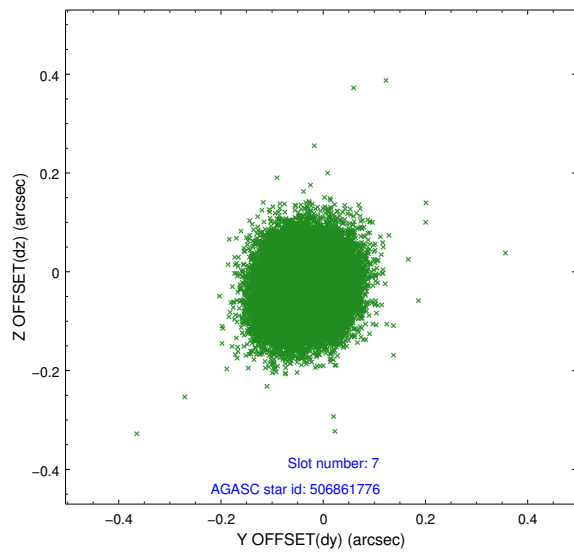
2.4.3 Slot 5



2.4.4 Slot 6

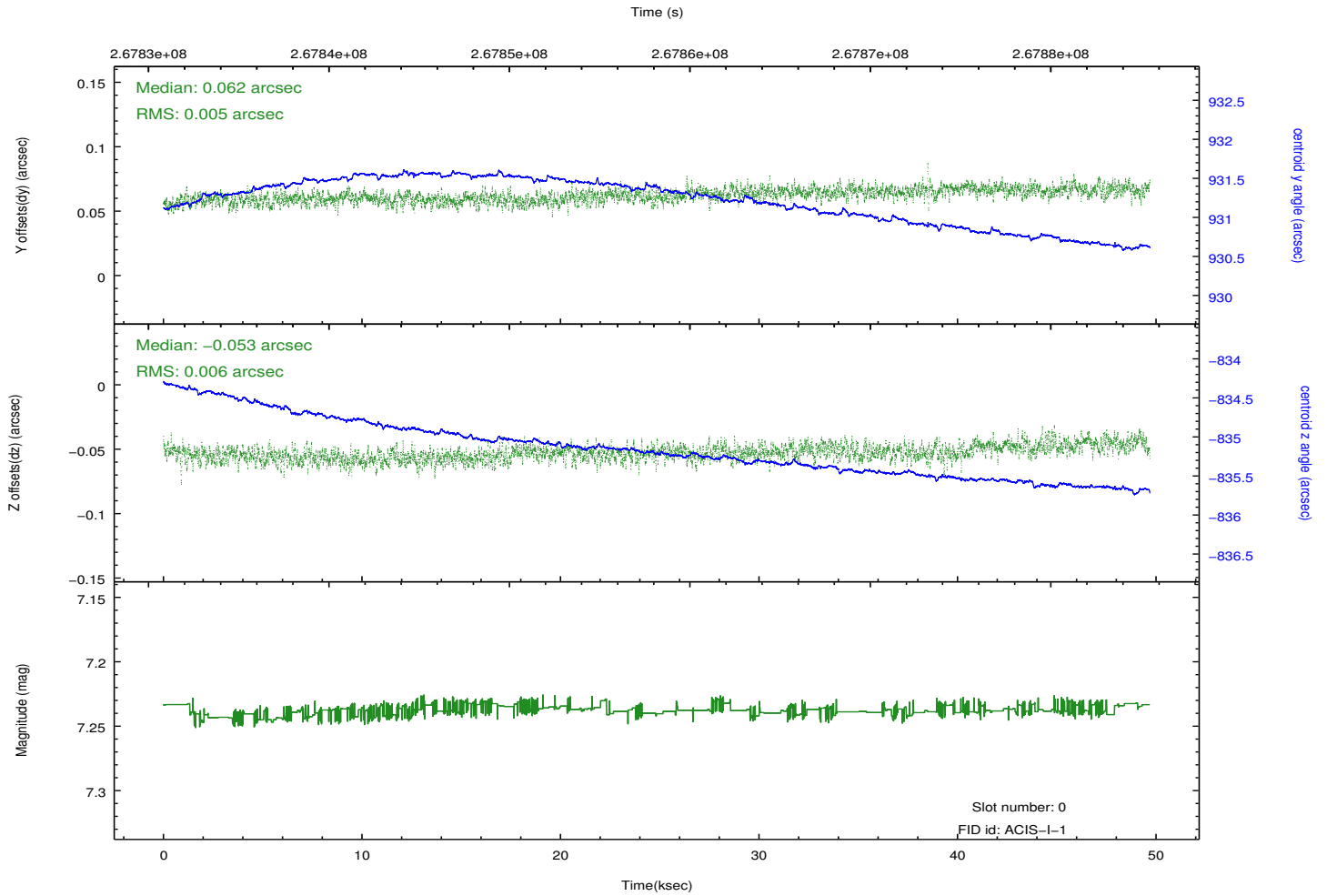
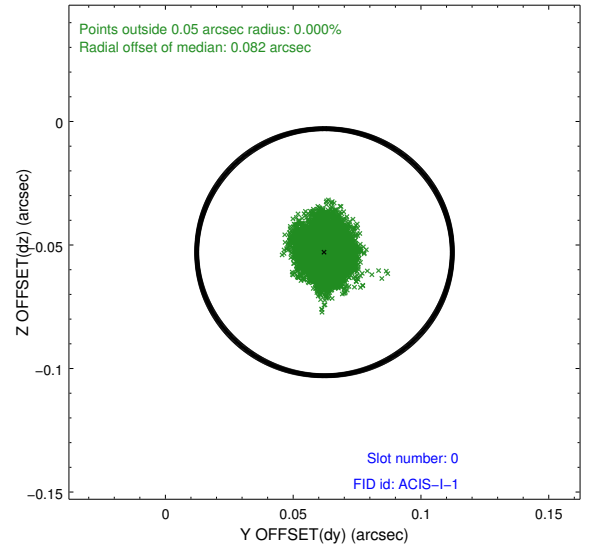
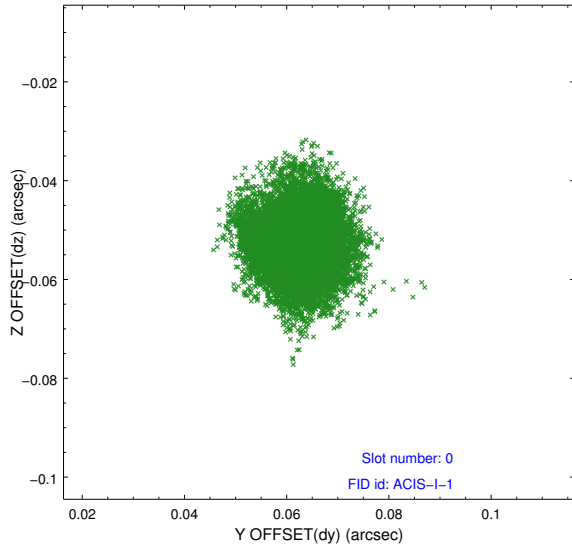


2.4.5 Slot 7

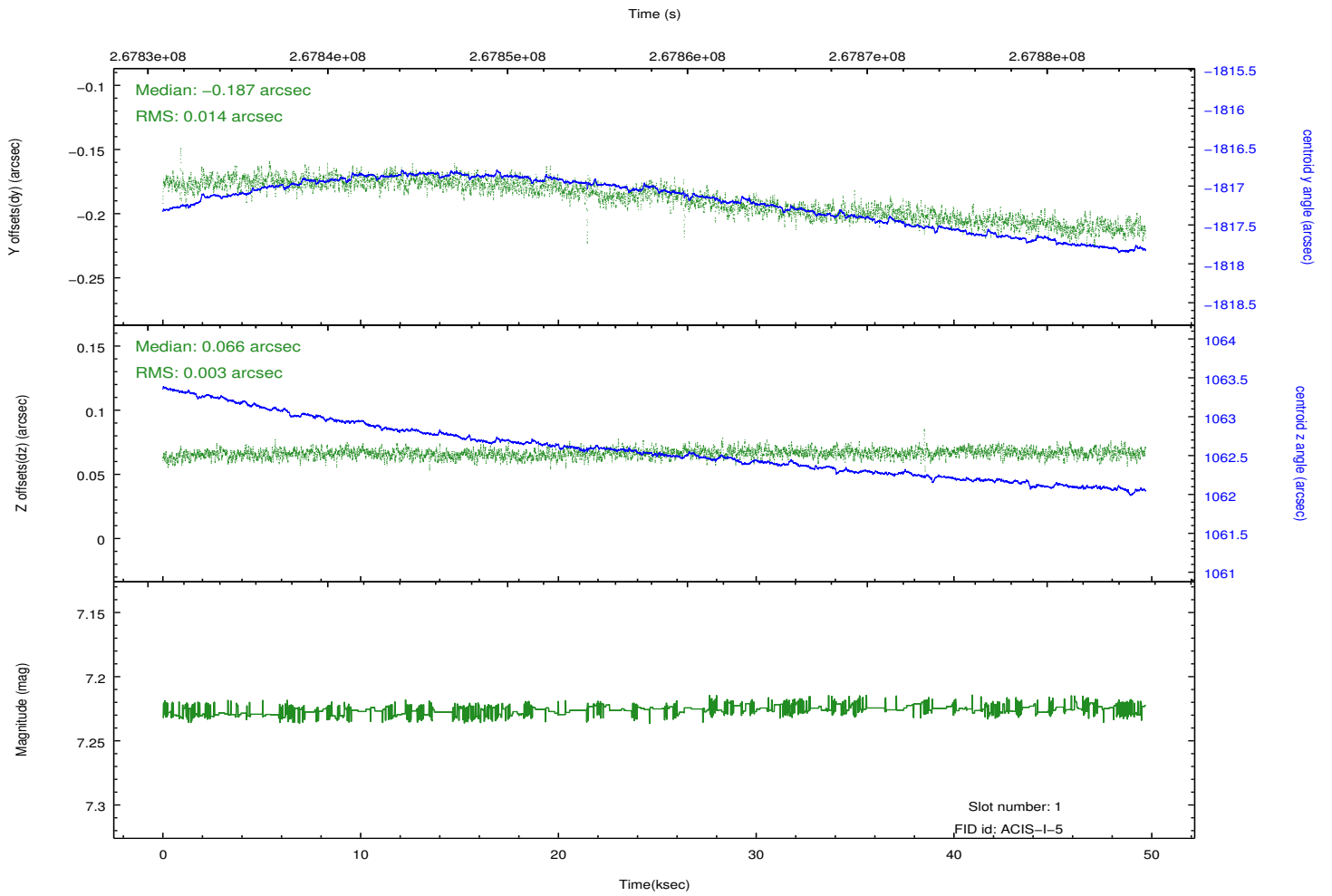
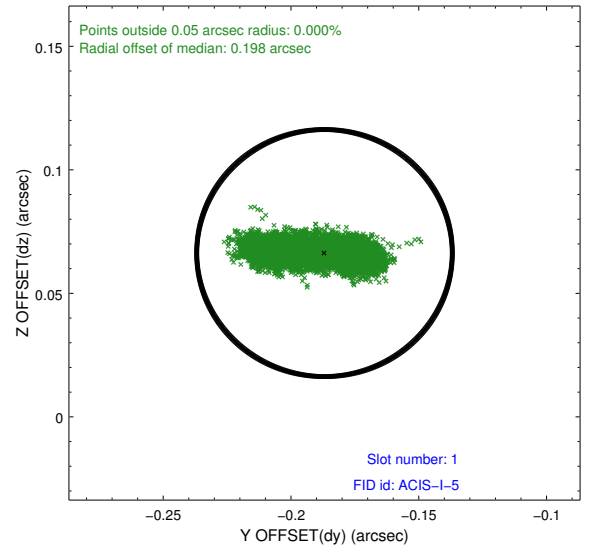
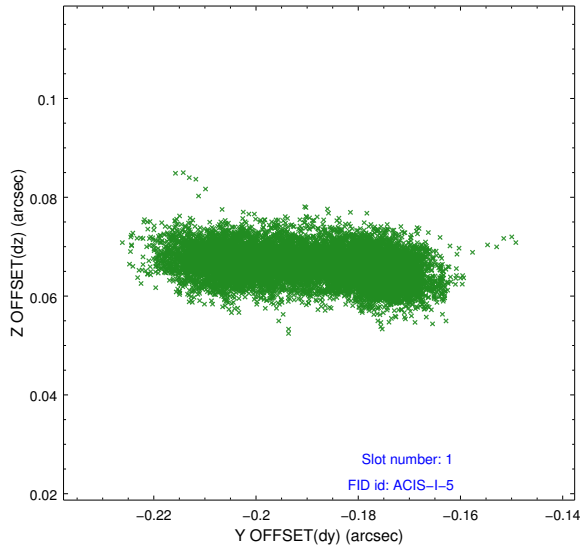


2.5 FID Slots

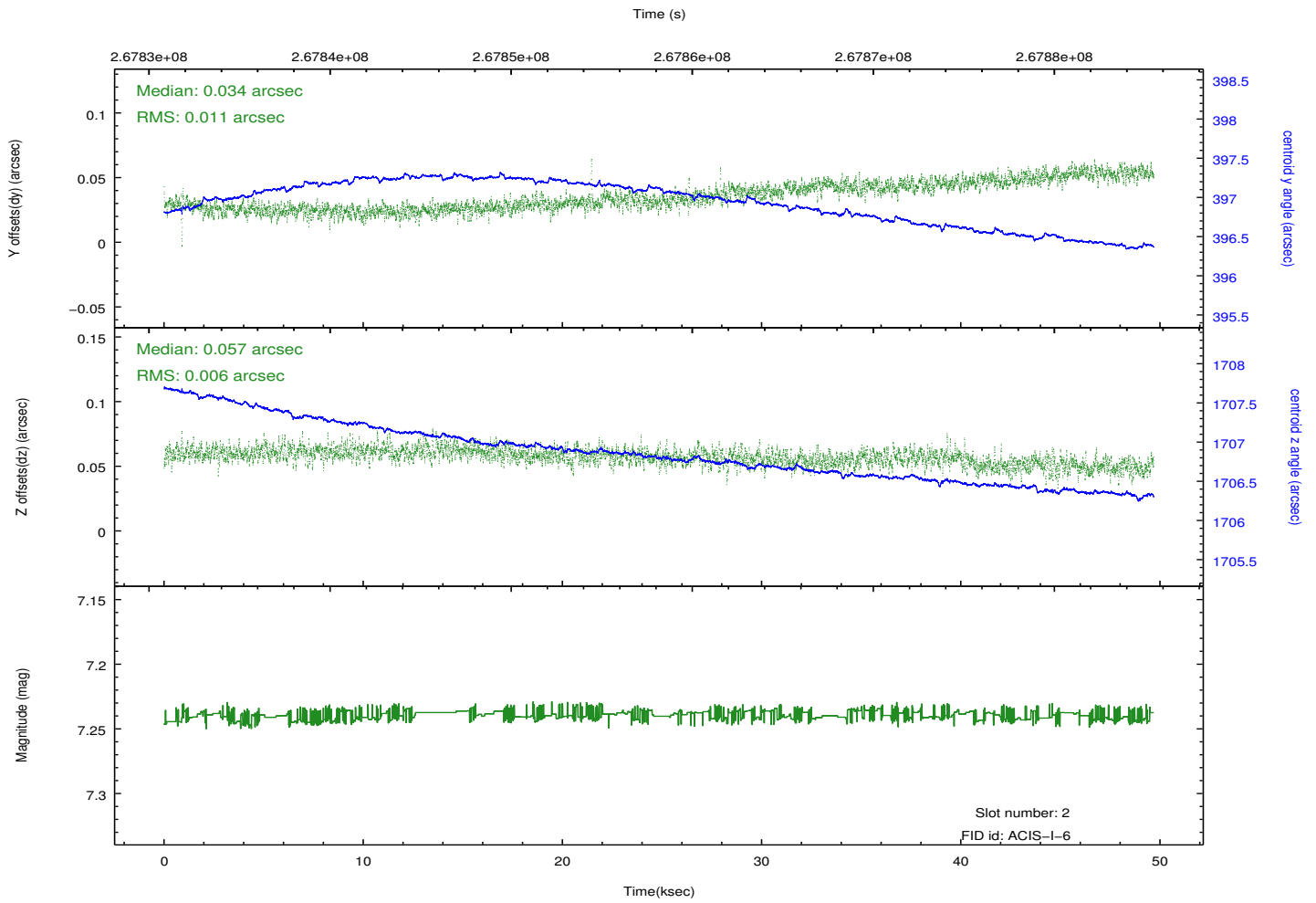
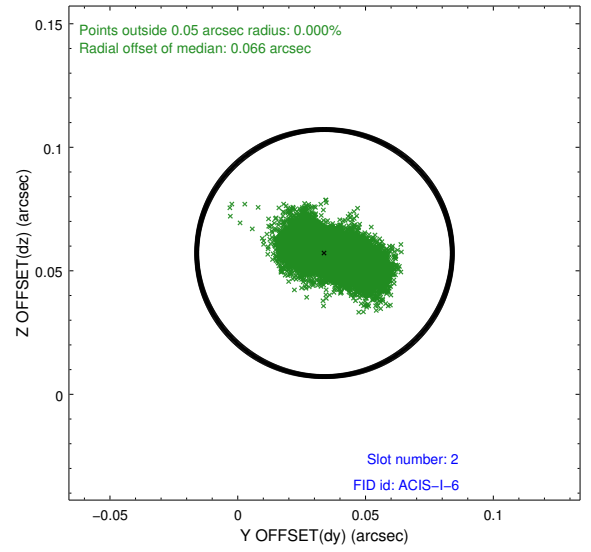
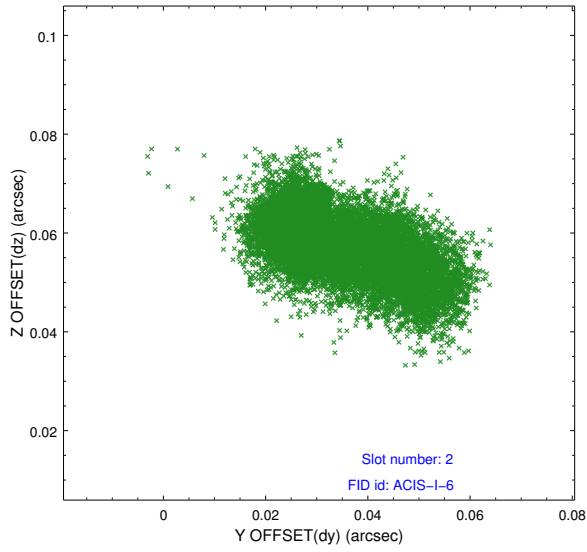
2.5.1 Slot 0



2.5.2 Slot 1



2.5.3 Slot 2



A Summary

A.1 Status

V&V Scientist	Jen Lauer
V&V Date (YYYY-MM-DD)	2012.04.05
V&V Edition	1
V&V Disposition and Status	OK
V&V Charge Time	49.6799998

A.2 Comments