

# V&V Reference Report

## L2 ASCDS Version : 8.4.3.1

Observation 7053 - L2 Version 6  
Chandra X-Ray Center

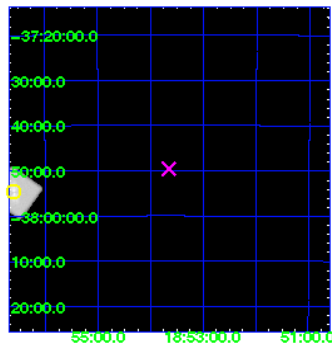
L2 Processing Date : Aug 11 2012

## Contents

<b>1</b>	<b>Front</b>	<b>2</b>
<b>2</b>	<b>OBI</b>	<b>3</b>
2.1	OBI . . . . .	3
2.1.1	Images . . . . .	3
2.1.2	Parameters . . . . .	4
2.1.3	Events . . . . .	4
2.2	Compared Parameters . . . . .	5
2.3	Aspect . . . . .	6
2.4	Star Slots . . . . .	9
2.4.1	Slot 3 . . . . .	9
2.4.2	Slot 4 . . . . .	10
2.4.3	Slot 5 . . . . .	11
2.4.4	Slot 6 . . . . .	12
2.4.5	Slot 7 . . . . .	13
2.5	FID Slots . . . . .	14
2.5.1	Slot 0 . . . . .	14
2.5.2	Slot 1 . . . . .	15
<b>A</b>	<b>Summary</b>	<b>16</b>
A.1	Status . . . . .	16
A.2	Comments . . . . .	16

# 1 Front

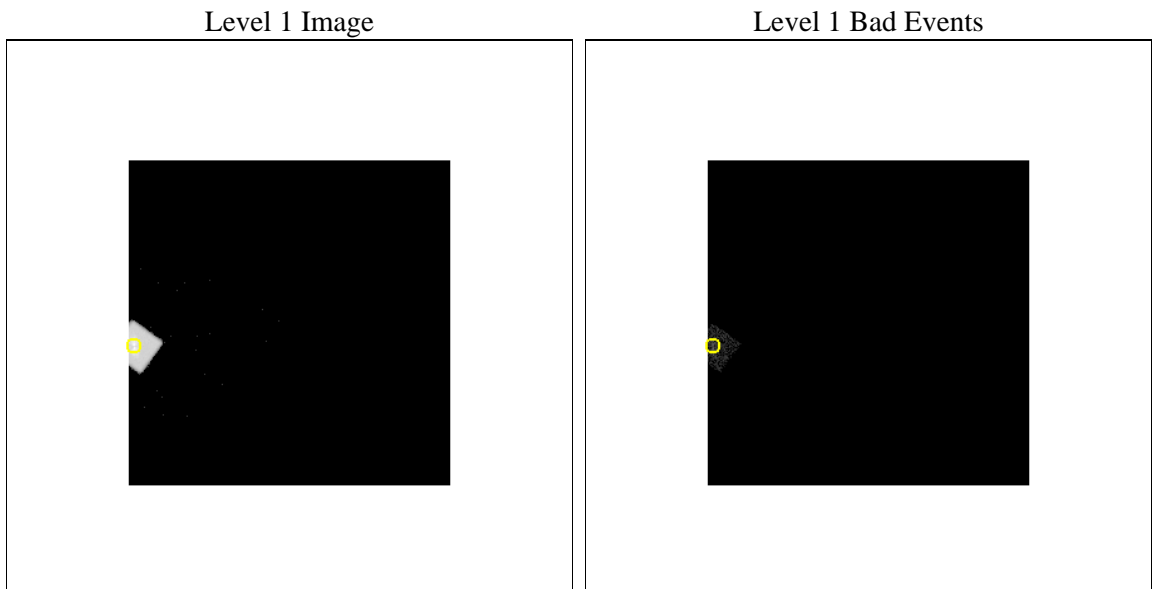
seq_num	990008	Sequence number
obs_id	7053	Observation id
title	AO7 Calibration Observations of the ACIS charged particle background	&#160
observer	Dr. CXC Calibration	Principal investigator
object	RXJ1856.5-3754	Source name
ra_targ	284.147083	Observer's specified target RA [deg]
dec_targ	-37.909611	Observer's specified target Dec [deg]
ra_nom	283.41354101979	Nominal RA [deg]
dec_nom	-37.826733123268	Nominal Dec [deg]
roll_nom	261.15622162407	Nominal Roll [deg]
revision	6	Processing version of data
ontime	49626.402335942	[s]
livetime	49572.806518323	Ontime multiplied by DTCOR
l2events	130435	Number of level 2 events



## 2 OBI

### 2.1 OBI

#### 2.1.1 Images



### 2.1.2 Parameters

obi_num	0	Obi number	sched_exp_time	50000.000000	[s] Scheduled observation exposure time
ascdsver	8.4.5	Processing system revision	ontime	49692.00234592	[s]
caldsver	4.5.1.1	&#160	l1events	176255	Number of level 1 events
date	2012-08-11T14:48:14	Date and time of file creation			
revision	6	Processing version of data			

### 2.1.3 Events

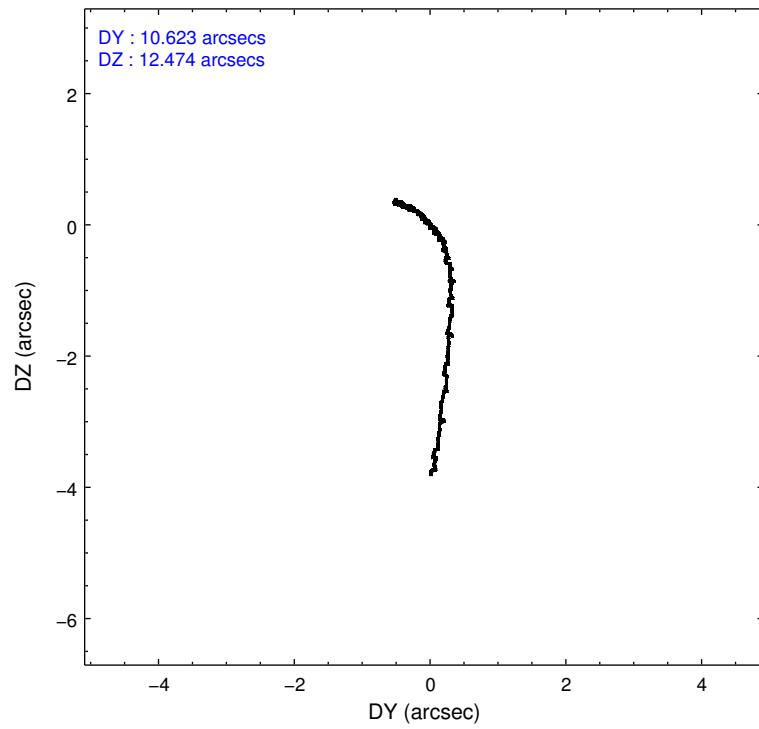
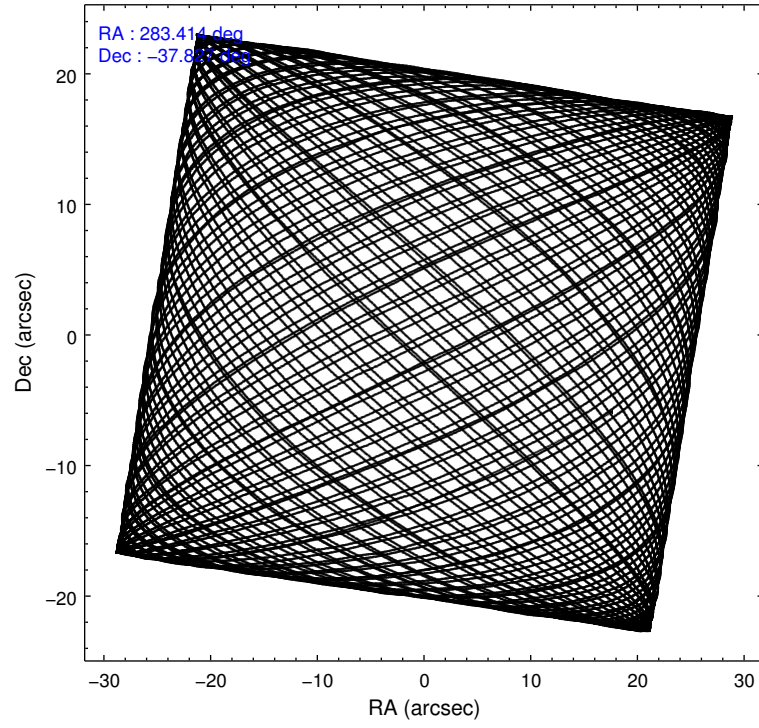
#### Level 1 Events

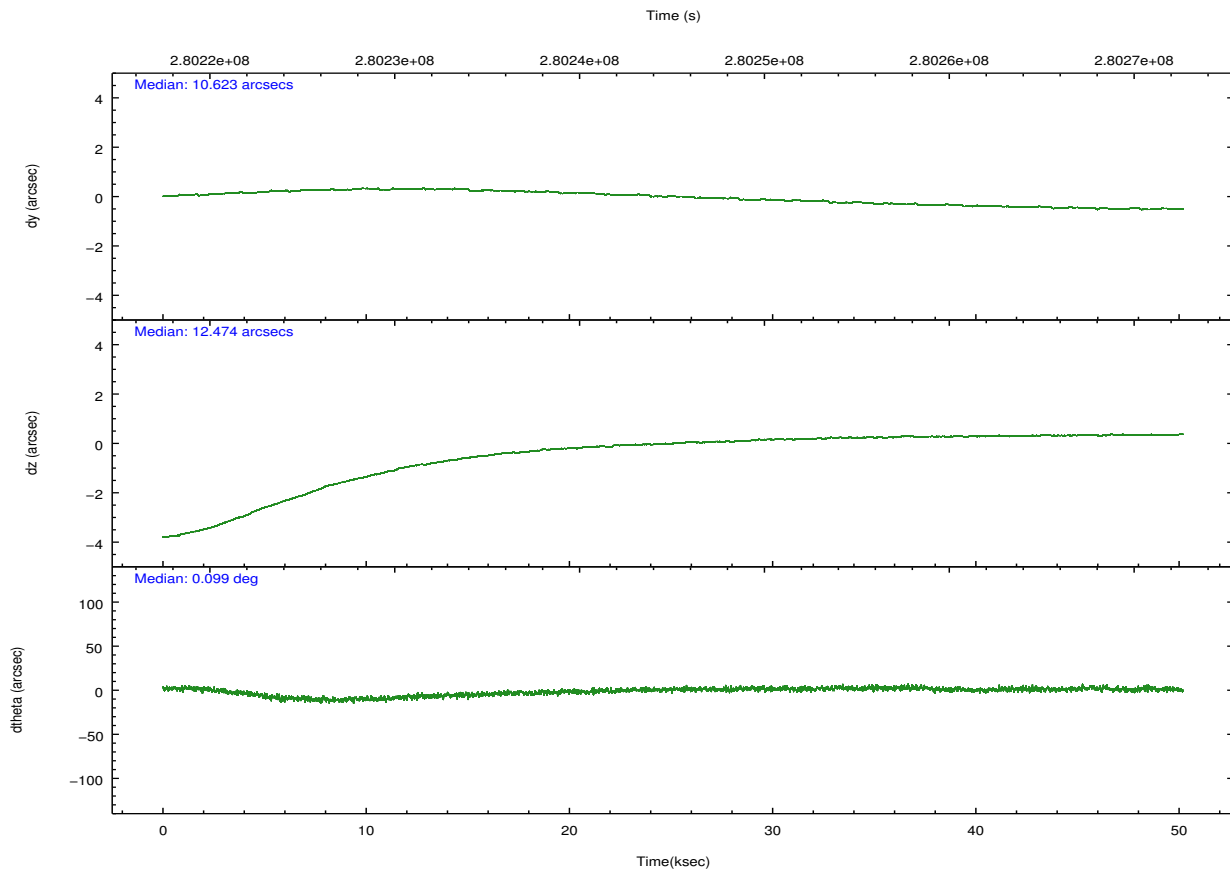
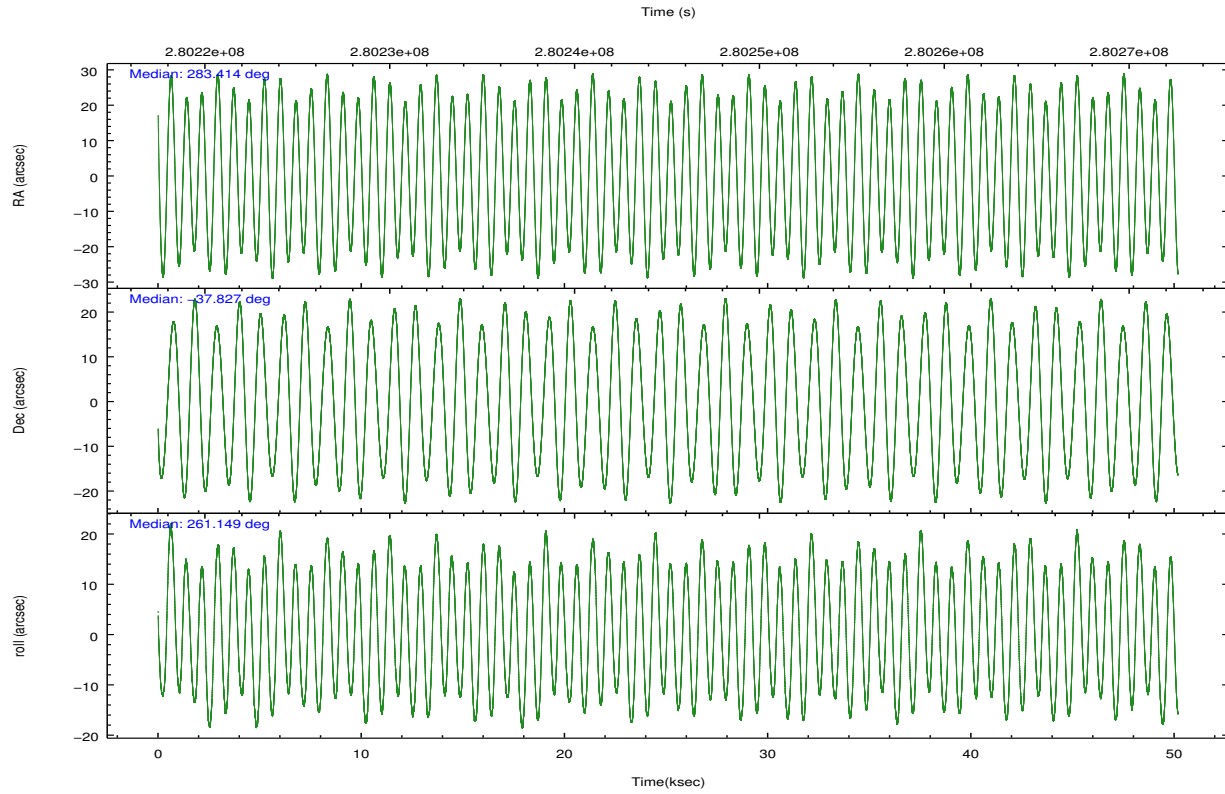
	<b>segment 0</b>
level 1 events	176255
rejected events	2281
rejected %	1%

## 2.2 Compared Parameters

Parameter	Planned	Actual	Parameter	Planned	Actual
Instrument	HRC	HRC	Obspar format version number	7	7
Detector	HRC-I	HRC-I	Obspar file type	PREDICTED	ACTUAL
Grating	NONE	NONE	Obspar update status	OVERRIDE	OVERRIDE
Data mode	NEXT_IN_LINE	NEXT_IN_LINE			
Observation mode	POINTING	POINTING			
[deg] Pointing RA	283.4135464974634	283.4135410197928			
[deg] Pointing Dec	-37.82670528331688	-37.82673312326784			
[deg] Pointing Roll	261.1562249653603	261.1562216240706			
[s] Window start time (MET)	278726465.184000	278726465.184000			
[s] Window stop time (MET)	281232065.184000	281232065.184000			
[mm] SIM focus pos	-1.038866356238299	-1.038866356238299			
[mm] SIM defocus	0.00142623211714632	0.00142623211714632			
[mm] SIM translation stage pos	51.9960404362608	51.9960404362608			
[mm] SIM translation stage offset	74.989453869027	74.989453869027			
[s] Observation start time (MET)	280219977.101483	280219977.101483			
Observation start date	2006-11-18T06:54:52	2006-11-18T06:52:57			
[s] Observation end time (MET)	280270159.053854	280270159.053854			
Observation end date	2006-11-18T20:48:12	2006-11-18T20:49:19			

## 2.3 Aspect



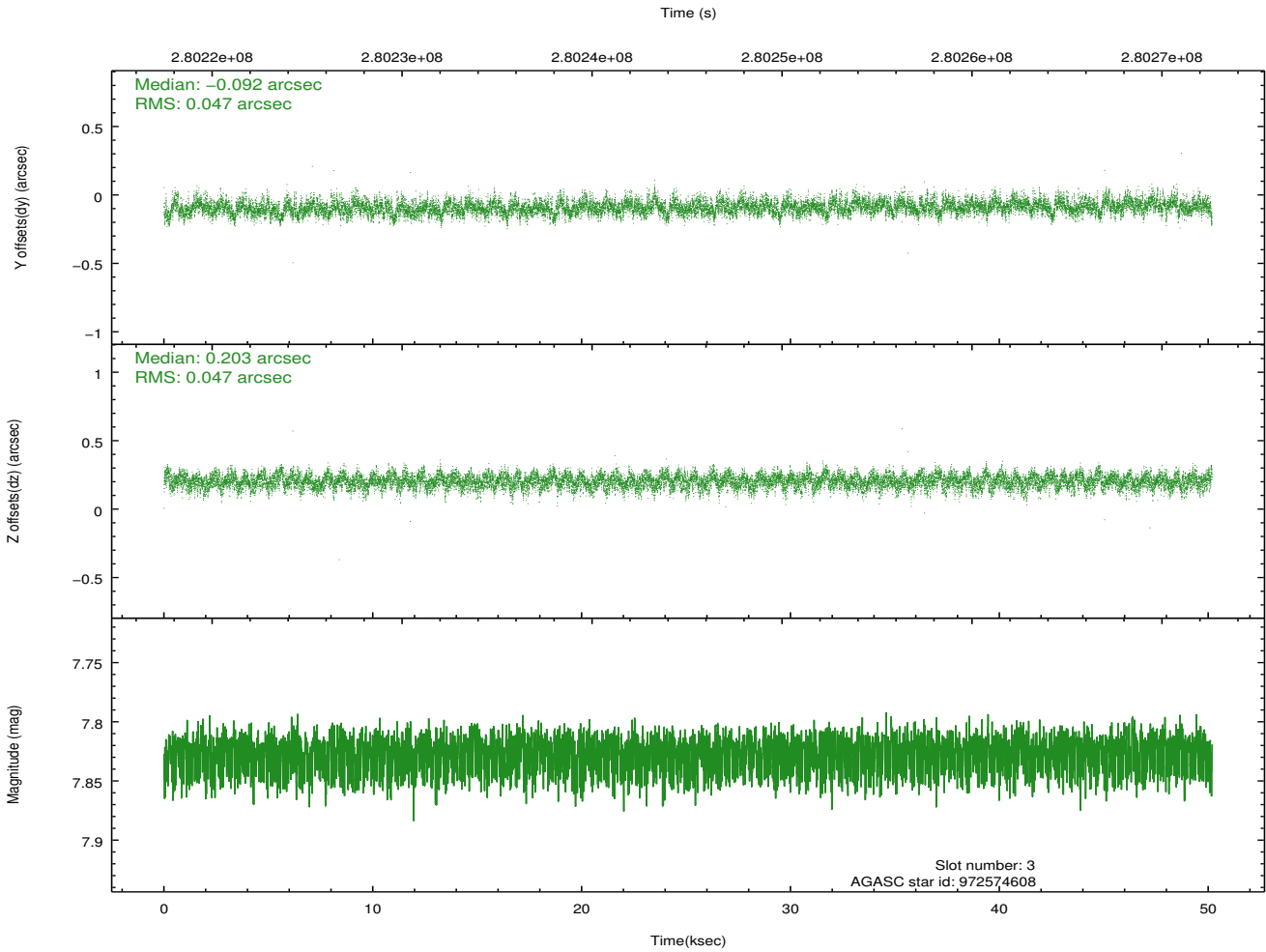
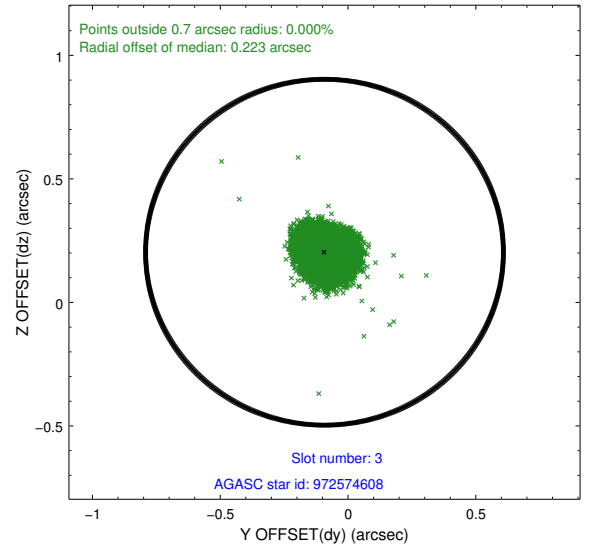
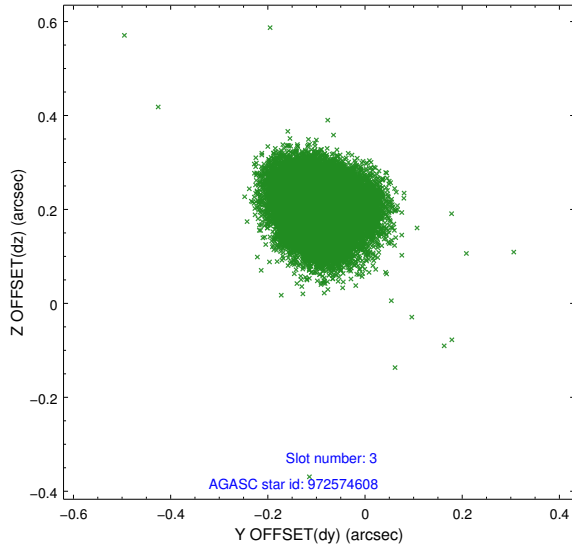


### Slot Statistics

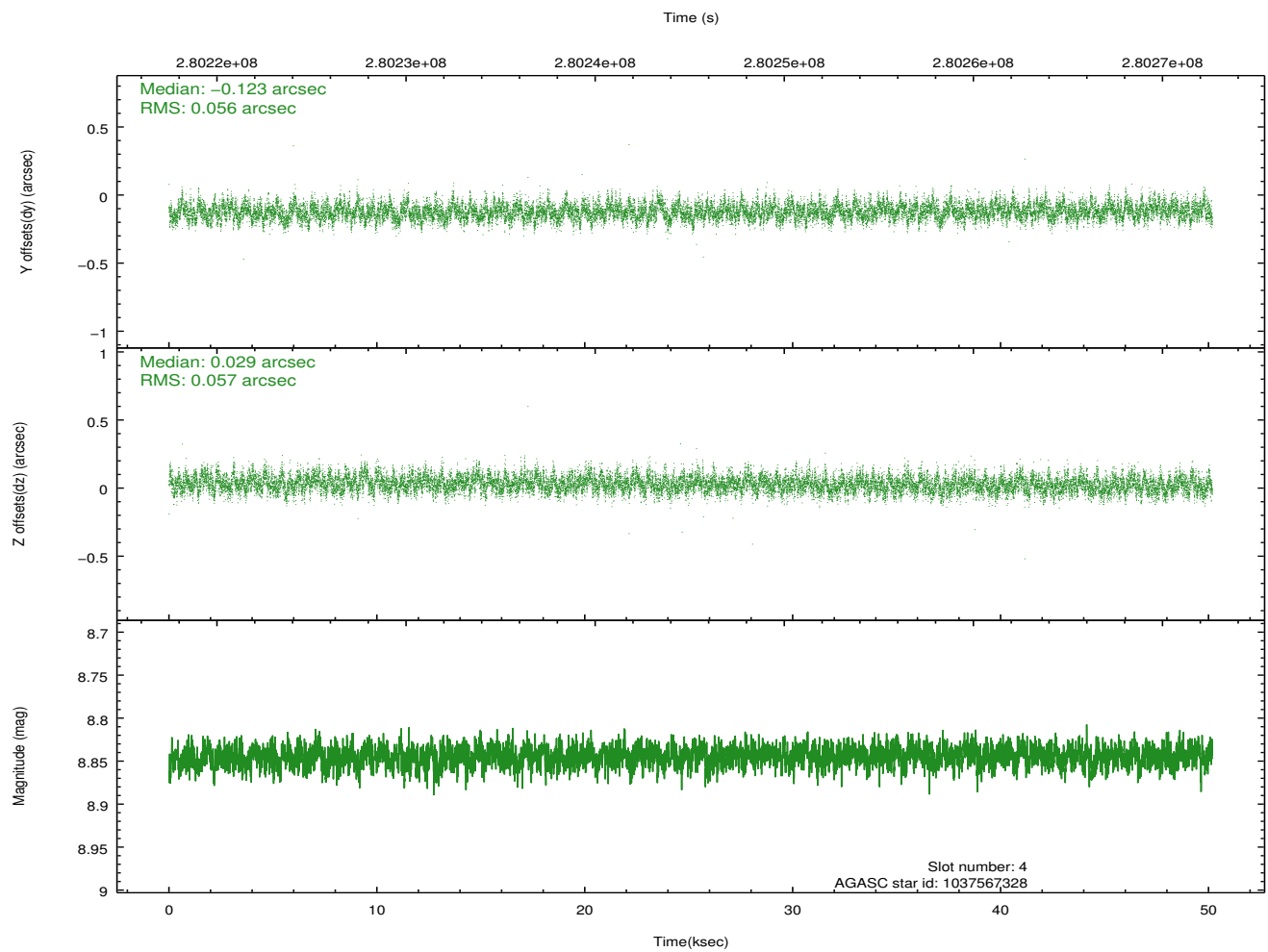
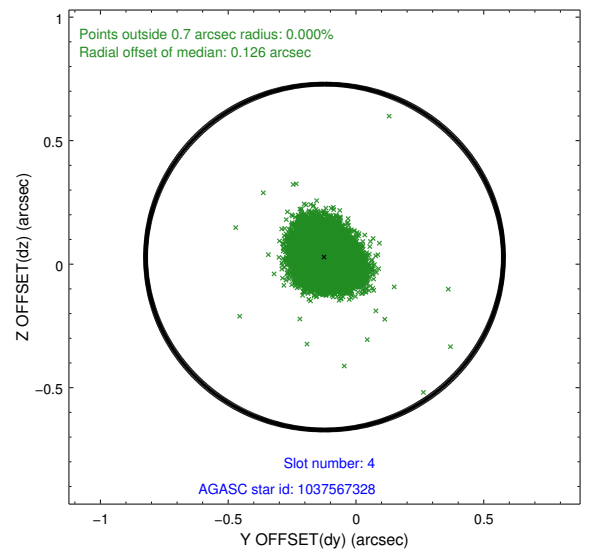
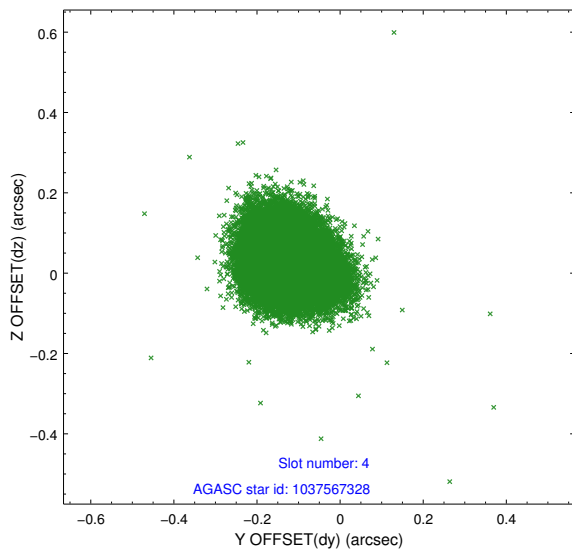
slot	status	id	mag	n_pts	med_dy	med_dz	dr1	dr2	ra	dec	mean_y	mean_z
0	FID	HRC-I-1	6.88	12239	-0.617	-0.028	0.005	0.010	0.000000	0.000000	-764.92	237.93
1	FID	HRC-I-2	7.01	12237	0.696	-0.026	0.005	0.010	0.000000	0.000000	845.88	238.98
2	UNUSED		0.00	0	0.000	0.000	0.000	0.000	0.000000	0.000000	0.00	0.00
3	GUIDE	972574608	7.83	24473	-0.092	0.203	0.070	0.113	283.352847	-37.274388	-1854.90	-423.68
4	GUIDE	1037567328	8.84	24466	-0.123	0.029	0.084	0.136	284.052016	-37.647288	-825.64	1751.99
5	GUIDE	1037587688	9.31	24370	0.042	-0.008	0.109	0.175	282.777537	-38.312745	2092.80	-1457.67
6	GUIDE	1037567312	8.47	24461	-0.104	-0.160	0.068	0.112	283.456056	-37.976515	598.52	251.76
7	GUIDE	1037587120	9.79	24293	0.277	-0.060	0.157	0.254	282.762833	-38.387719	2366.12	-1455.88

## 2.4 Star Slots

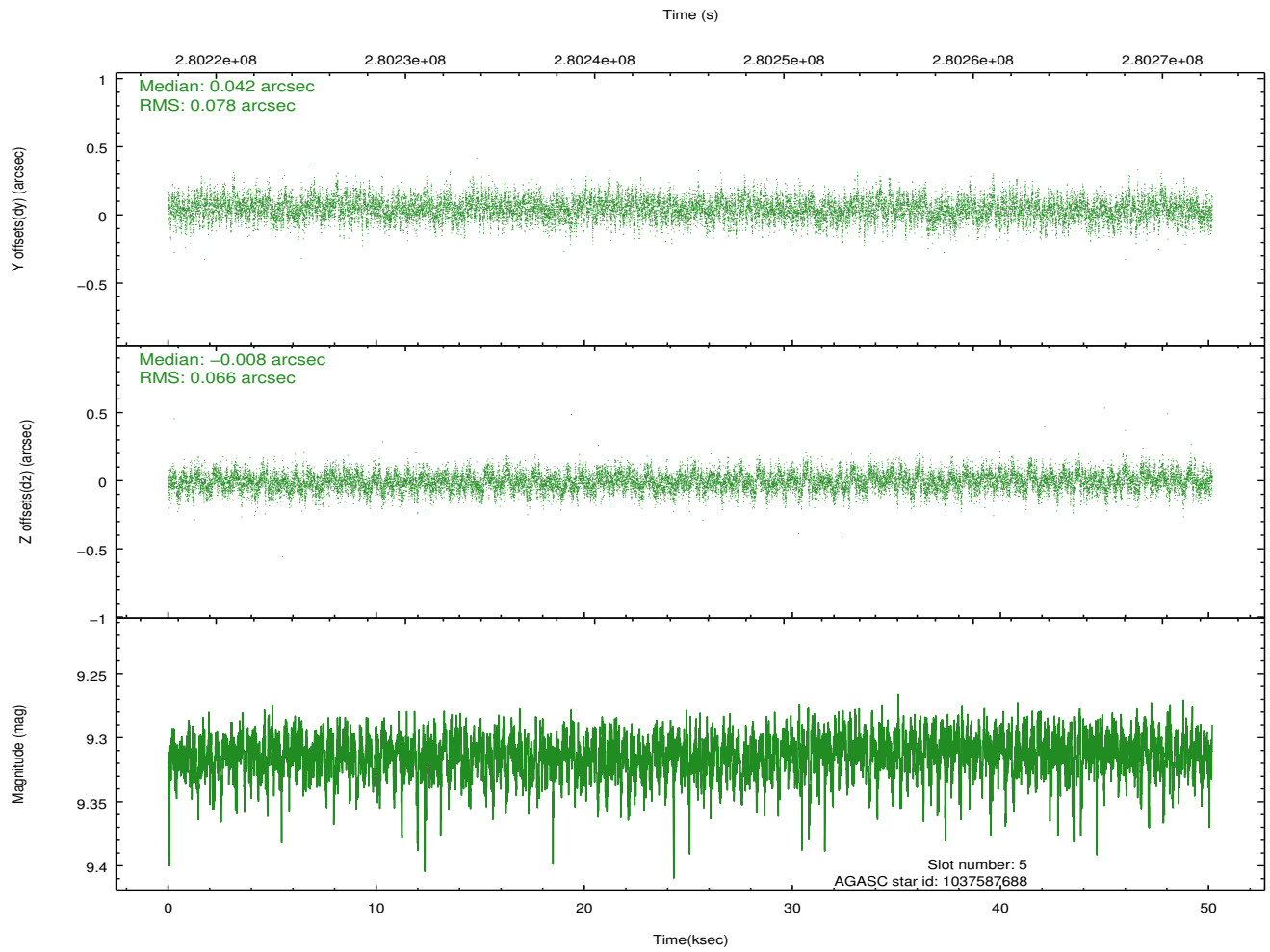
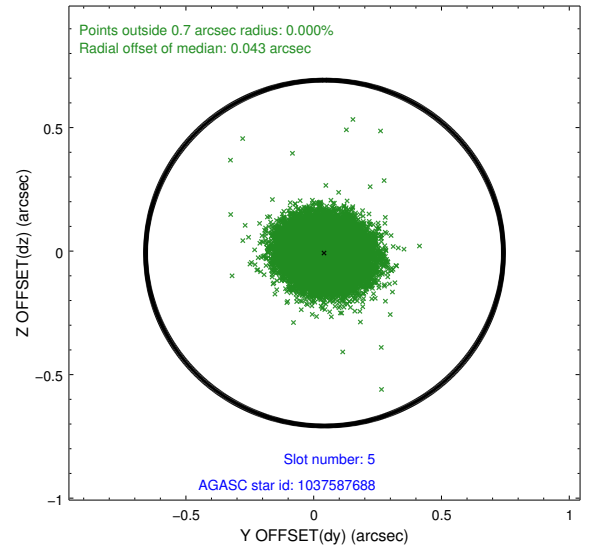
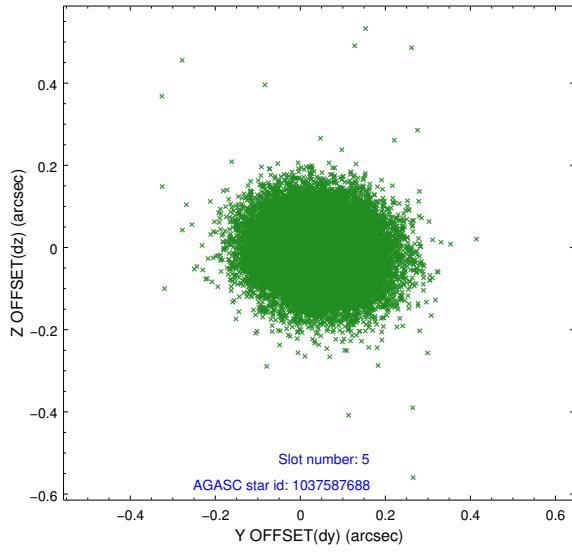
### 2.4.1 Slot 3



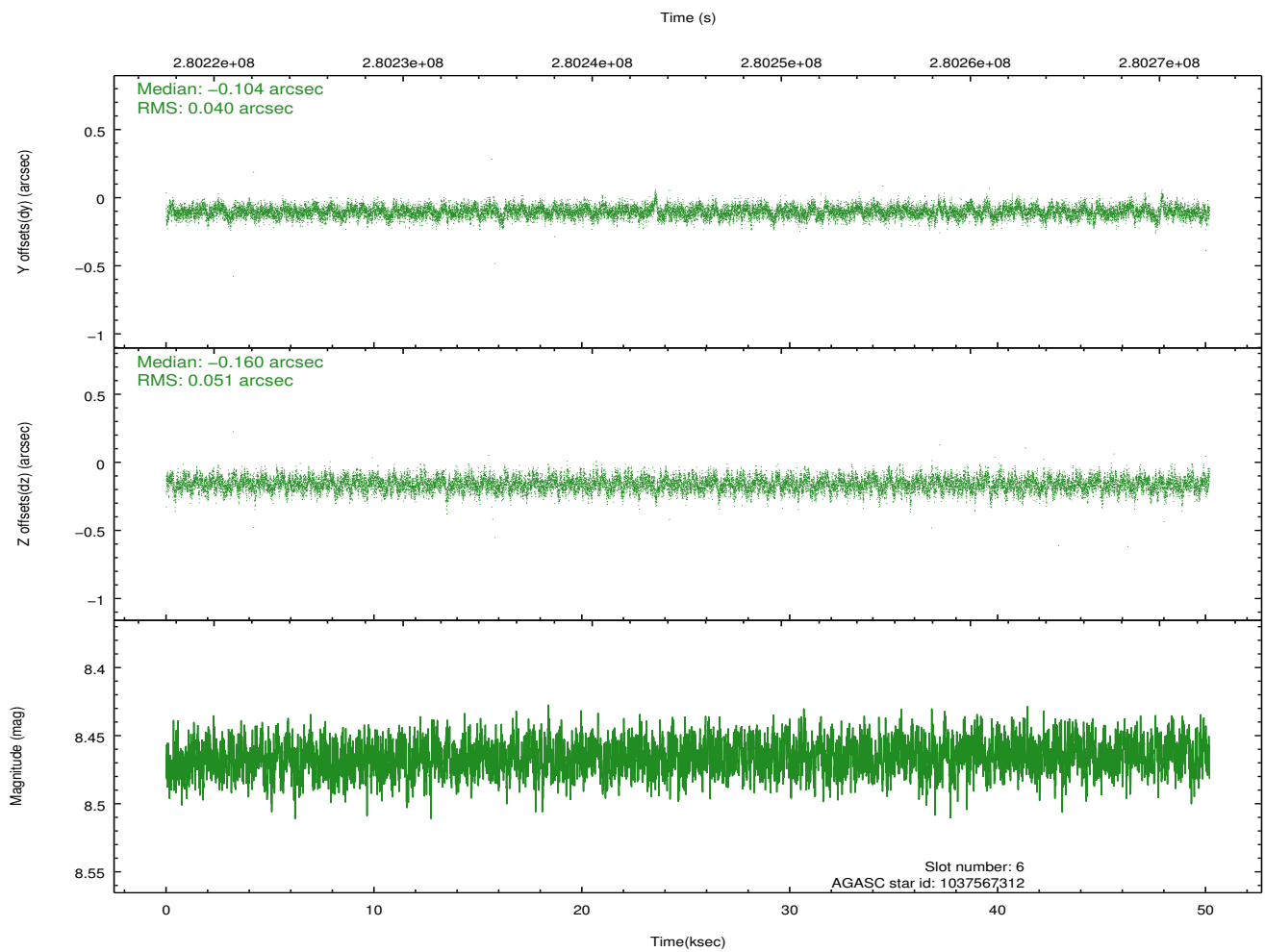
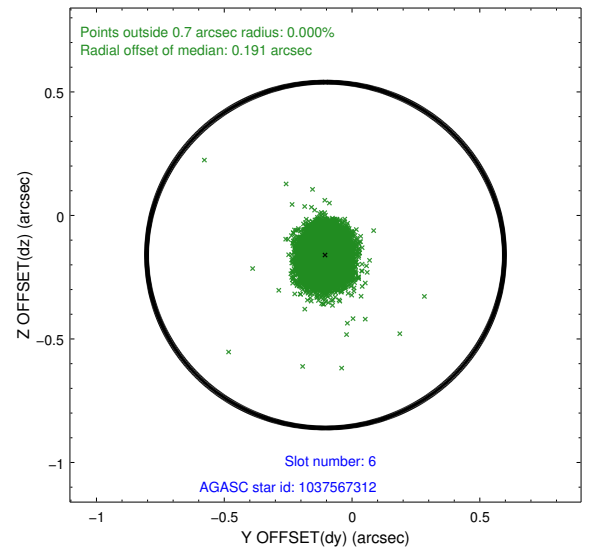
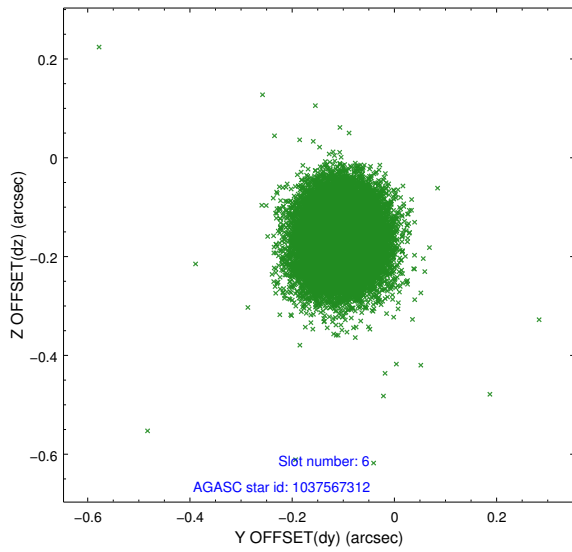
## 2.4.2 Slot 4



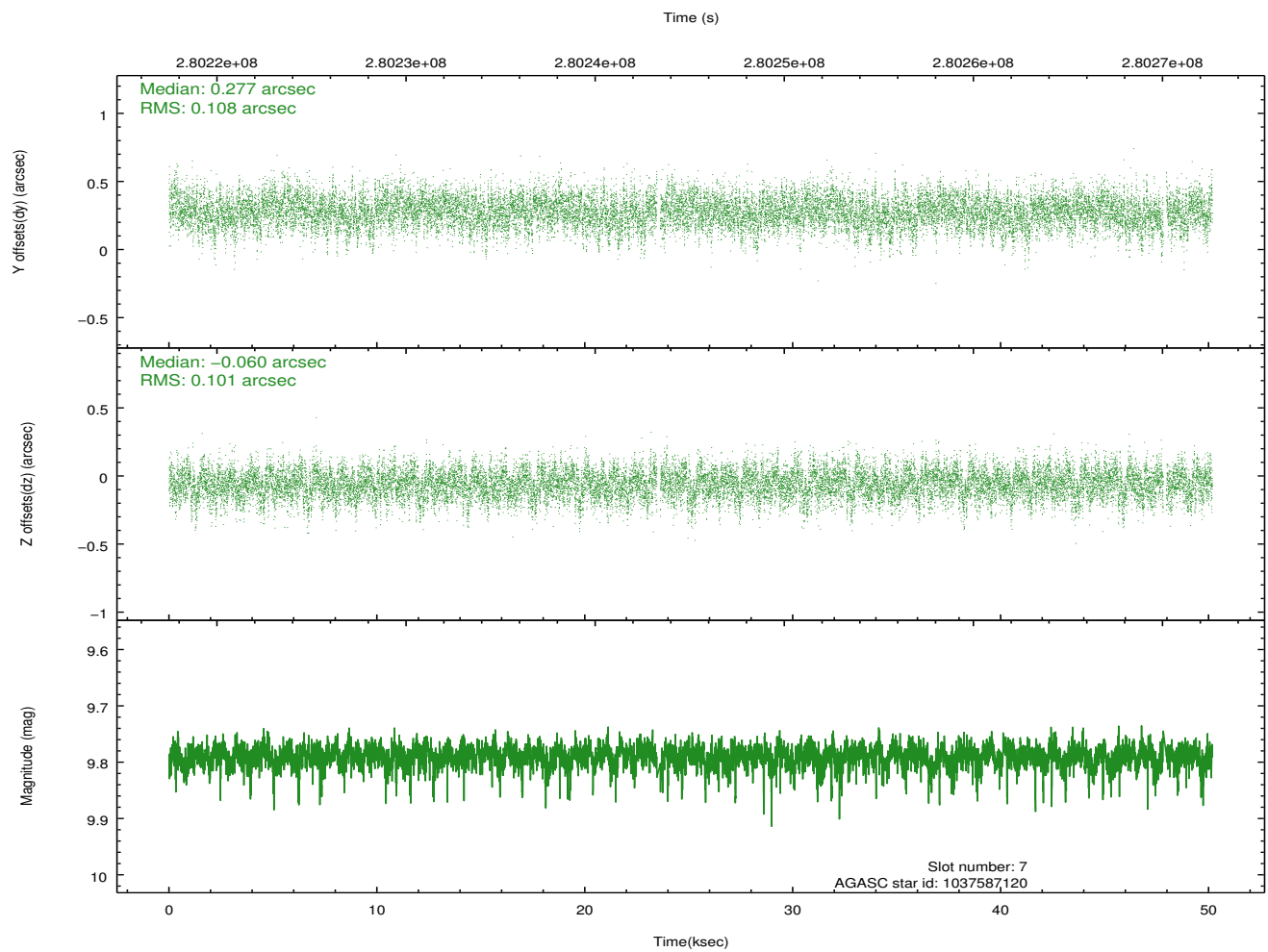
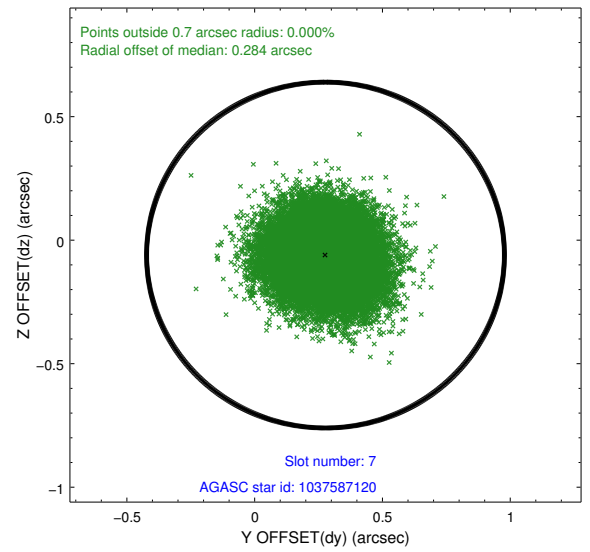
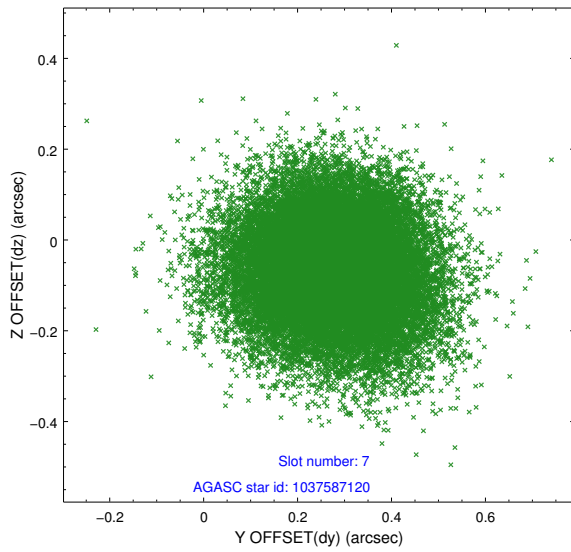
### 2.4.3 Slot 5



## 2.4.4 Slot 6

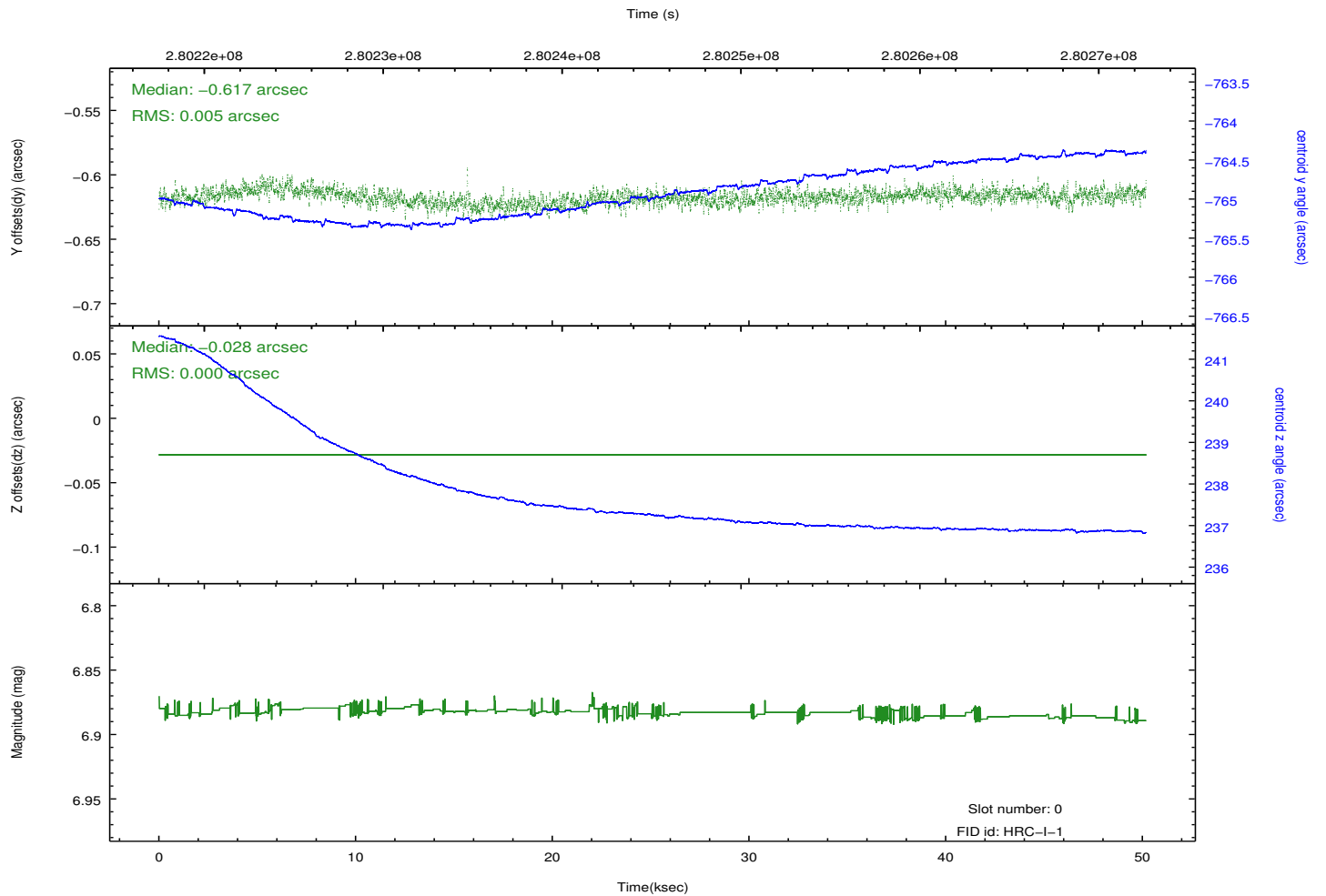
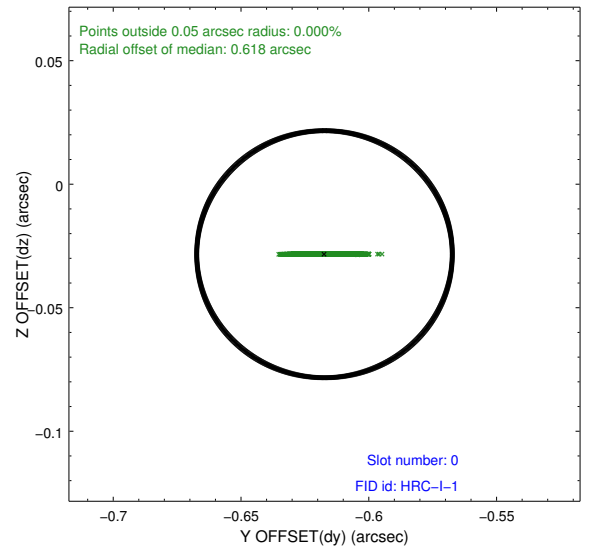
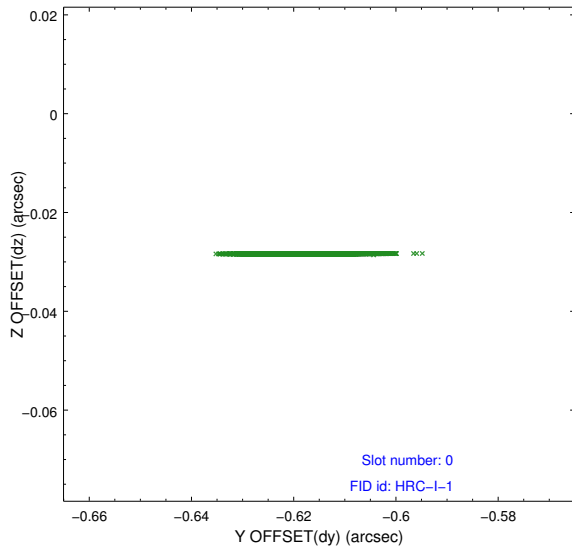


## 2.4.5 Slot 7

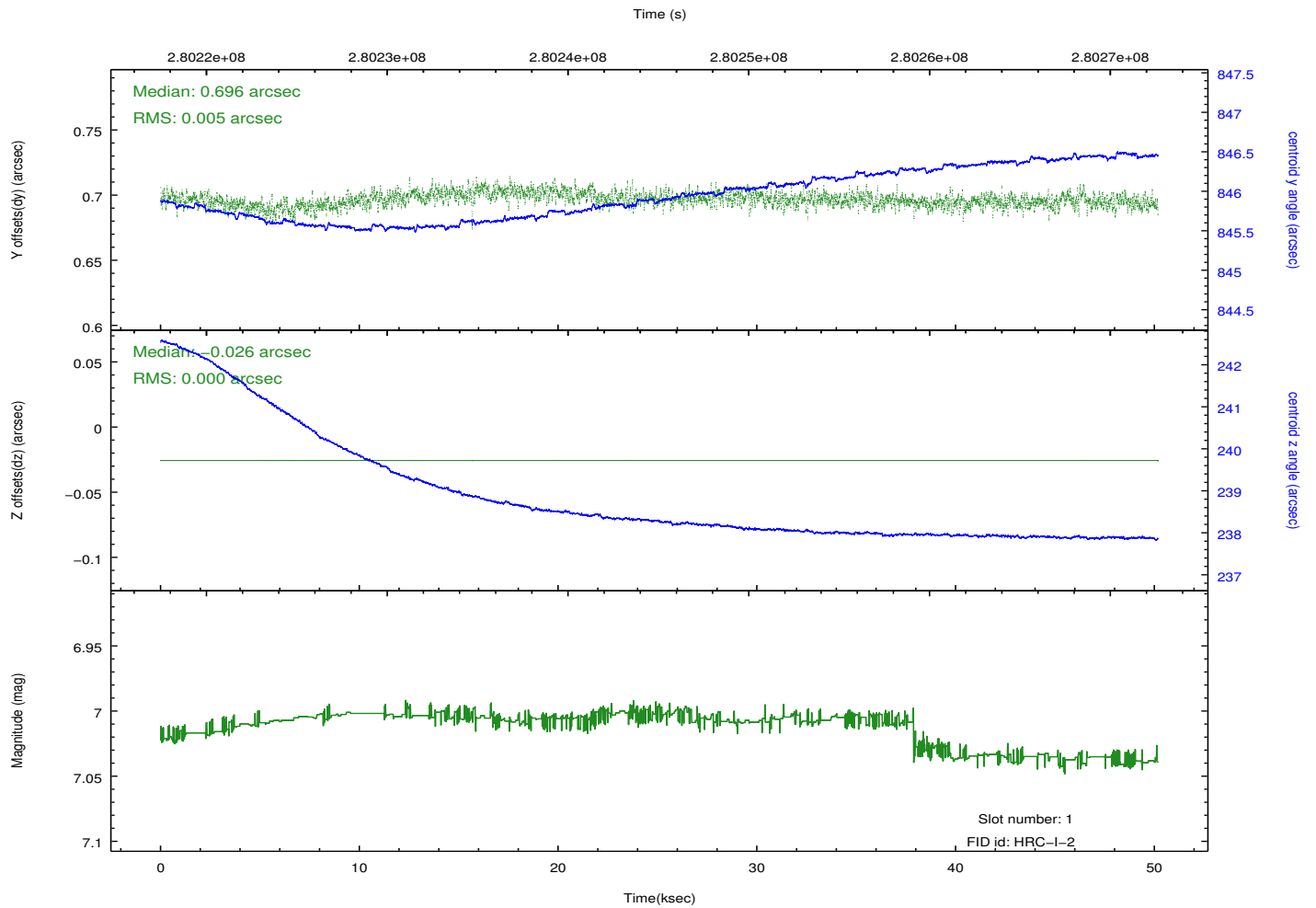
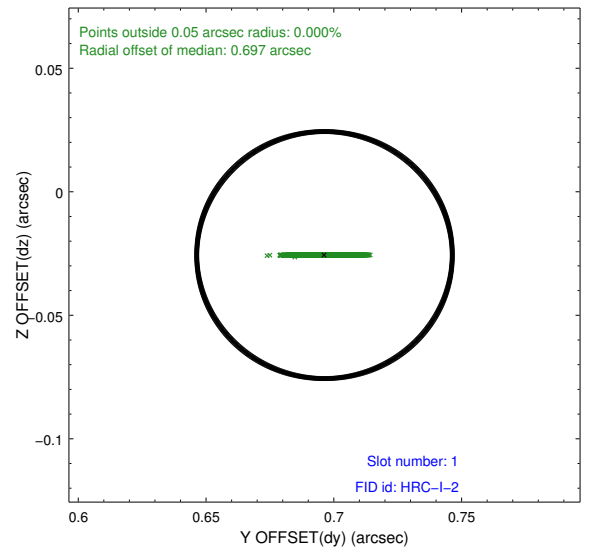
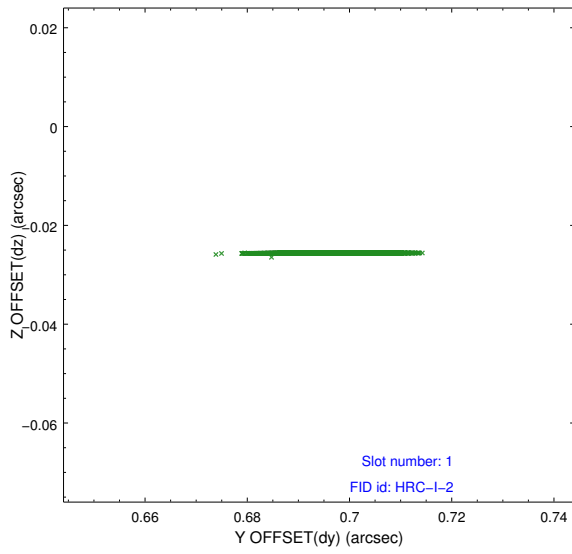


## 2.5 FID Slots

### 2.5.1 Slot 0



## 2.5.2 Slot 1



# A Summary

## A.1 Status

V&V Scientist	Jen Lauer
V&V Date (YYYY-MM-DD)	2012.08.14
V&V Edition	1
V&V Disposition and Status	OK
V&V Charge Time	49.6264023

## A.2 Comments

This HRC CAL observation has a `sim_z_offset` of 74.98 [mm]. The radial fid offsets of 0.618 arcsec (slot 0) and 0.697 arcsec (slot 1) are acceptable. The fid light in slot 2 was not in the Aspect camera FOV due to the large sim offset.

=====

Window constraint met.