

# V&V Reference Report

## L2 ASCDS Version : 8.4.5

Observation 713 - L2 Version 4  
Chandra X-Ray Center

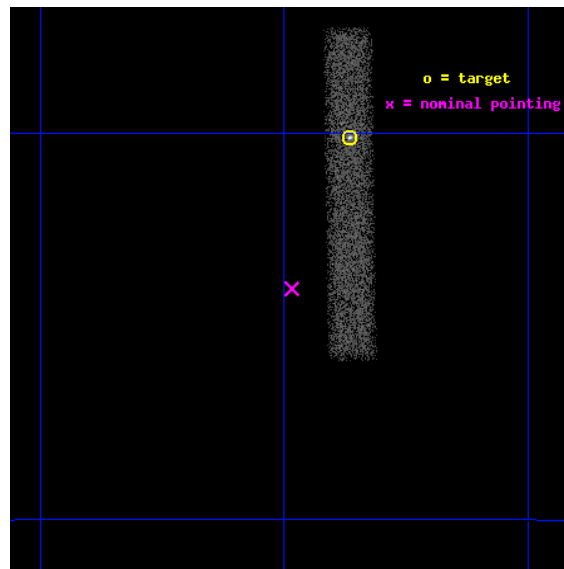
L2 Processing Date : Aug 29 2012

## Contents

<b>1</b>	<b>Front</b>	<b>2</b>
<b>2</b>	<b>OBI</b>	<b>3</b>
2.1	OBI . . . . .	3
2.1.1	Images . . . . .	3
2.1.2	Bias . . . . .	3
2.1.3	Parameters . . . . .	4
2.1.4	Events . . . . .	4
2.2	Compared Parameters . . . . .	5
2.3	Aspect . . . . .	6
2.4	Star Slots . . . . .	9
2.4.1	Slot 3 . . . . .	9
2.4.2	Slot 4 . . . . .	10
2.4.3	Slot 5 . . . . .	11
2.4.4	Slot 6 . . . . .	12
2.4.5	Slot 7 . . . . .	13
2.5	FID Slots . . . . .	14
2.5.1	Slot 0 . . . . .	14
2.5.2	Slot 1 . . . . .	15
2.5.3	Slot 2 . . . . .	16
<b>A</b>	<b>Summary</b>	<b>17</b>
A.1	Status . . . . .	17
A.2	Comments . . . . .	17

# 1 Front

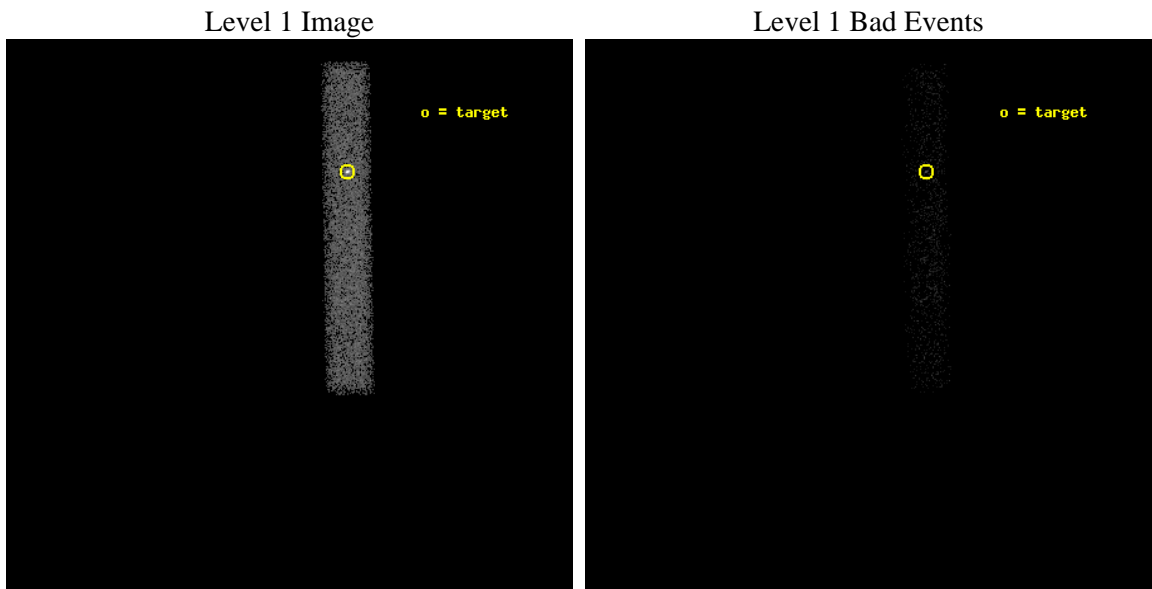
seq_num	400080	Sequence number
obs_id	713	Observation id
title	QUIESCENT EMISSION FROM TRANSIENT TYPE I X-RAY BURSTERS	Proposal t
observer	PROF. LARS BILDSTEN	Principal investigator
object	CEN X-4	Source name
dtcycle	0	&#160
cycle	P	events from which exps? Prim/Second/Both
ra_targ	224.591667	Observer's specified target RA [deg]
dec_targ	-31.66875	Observer's specified target Dec [deg]
ra_nom	224.62112583099	Nominal RA [deg]
dec_nom	-31.73394979941	Nominal Dec [deg]
roll_nom	269.15844823361	Nominal Roll [deg]
revision	4	Processing version of data
ontime	10542.400157094	Sum of GTIs [s]
livetime	9561.400468977	Livetime [s]
ontime7	10542.400157094	Sum of GTIs [s]
l2events	14202	Number of level 2 events



## 2 OBI

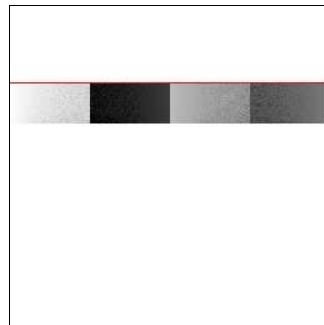
### 2.1 OBI

#### 2.1.1 Images



#### 2.1.2 Bias

Chip 7



### 2.1.3 Parameters

obi_num	0	Obi number	sched_exp_time	9886.043000	[s] Scheduled observation exposure time
ascdsver	8.4.5	Processing system revision	ontime	10542.400157094	Sum of GTIs [s]
caldsver	4.5.1.1	&#160	ontime7	10542.400157094	Sum of GTIs [s]
date	2012-08-29T15:02:24	Date and time of file creation	l1events	21018	Number of level 1 events
revision	4	Processing version of data			

### 2.1.4 Events

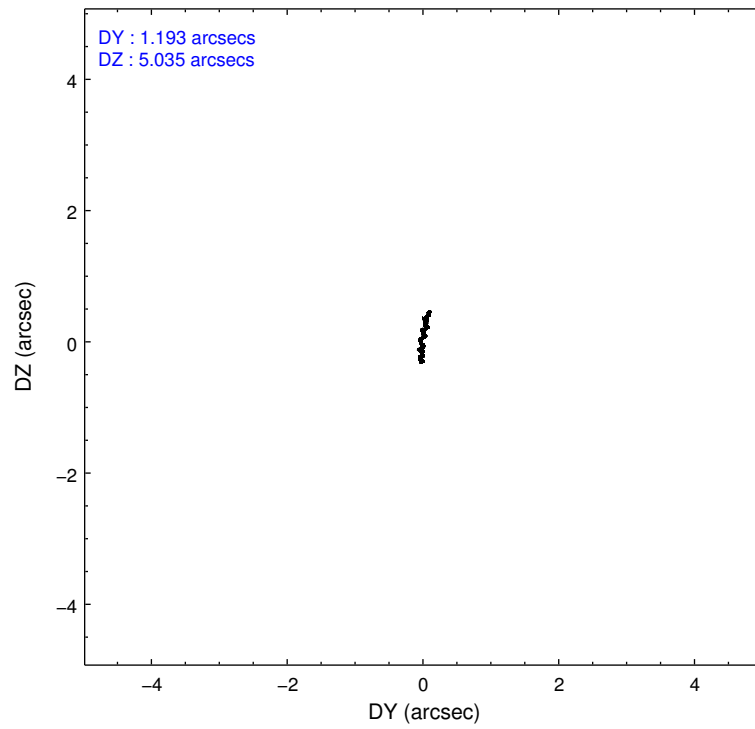
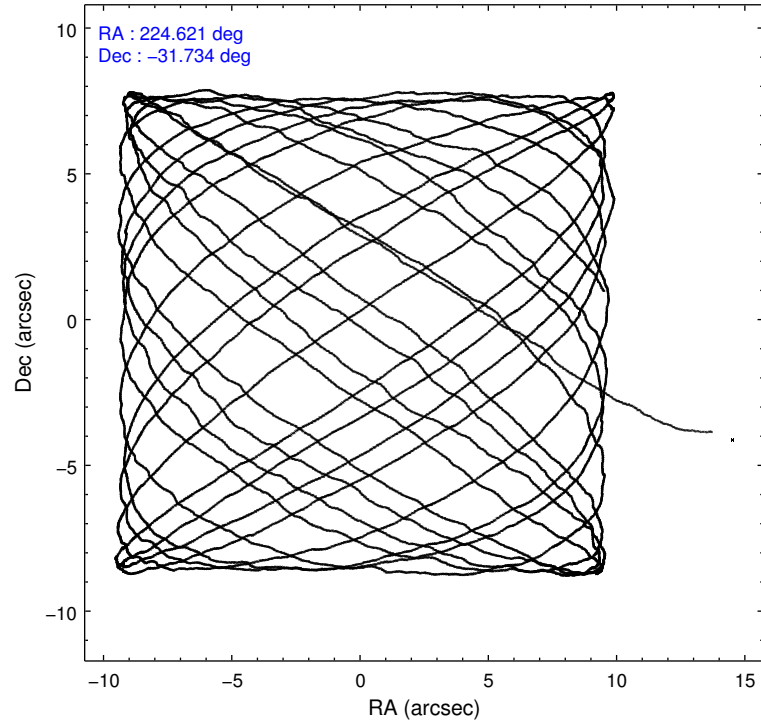
	<b>ccd 7</b>
level 1 events	21018
rejected events	6530
rejected %	31%

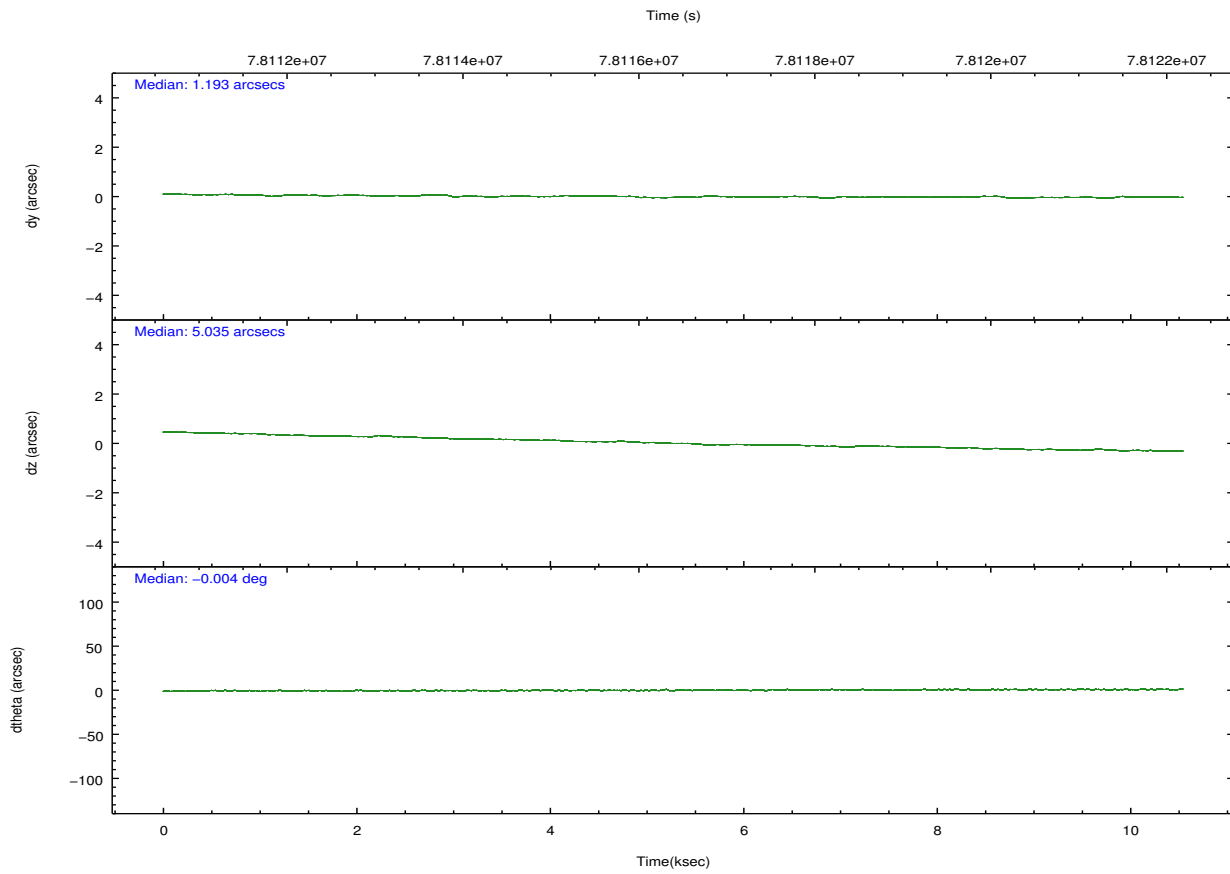
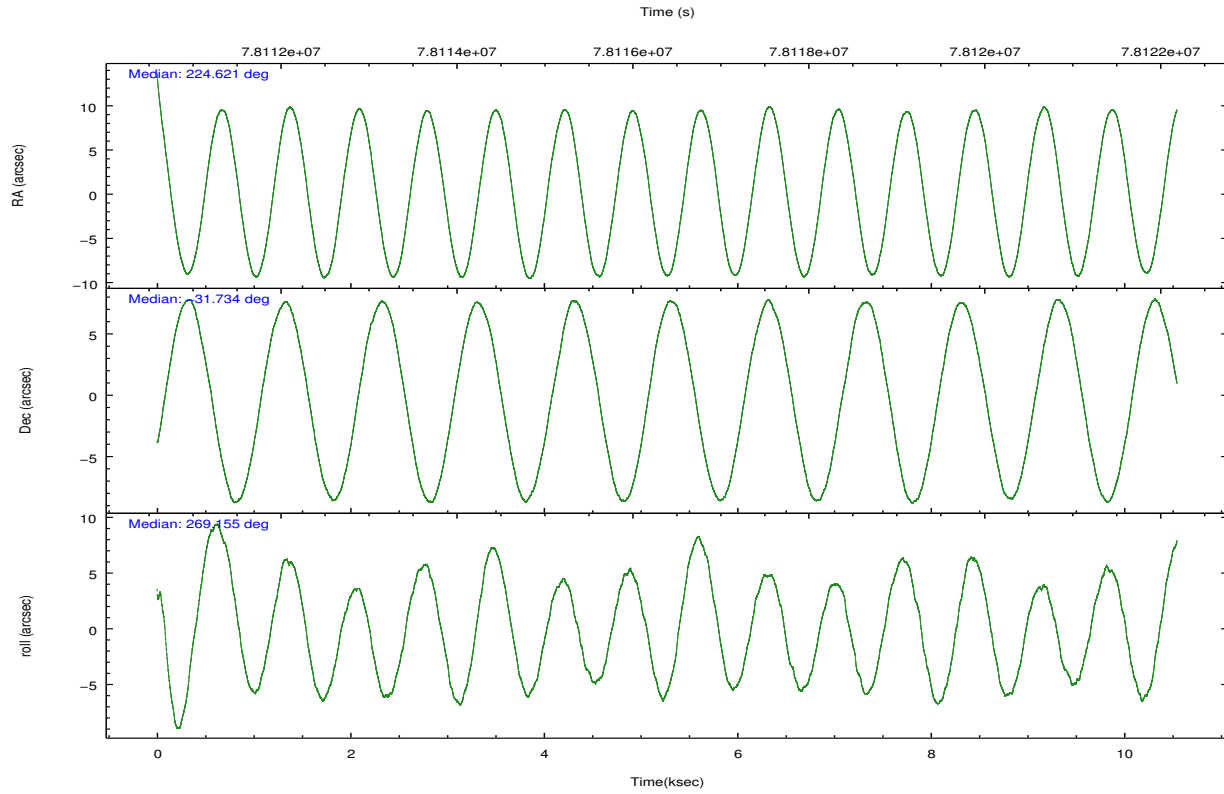
	<b>ccd 7</b>
grade 0 events	2783
	13%
grade 1 events	24
	0%
grade 2 events	2899
	13%
grade 3 events	1634
	7%
grade 4 events	1591
	7%
grade 5 events	1149
	5%
grade 6 events	5724
	27%
grade 7 events	5214
	24%

## 2.2 Compared Parameters

Parameter	Planned	Actual	Parameter	Planned	Actual
Instrument	ACIS	ACIS	Obspar format version number	7	7
Detector	ACIS-7	ACIS-7	Obspar file type	PREDICTED	ACTUAL
Grating	NONE	NONE	Obspar update status	NONE	UPDATED
Data mode	VFAINT	VFAINT	Number of optional ACIS chips dropped	0	0
Observation mode	POINTING	POINTING	On-chip summing requested	N	N
[deg] Pointing RA	224.605301	224.6211258309922	Subarray requested	CUSTOM	1/8
[deg] Pointing Dec	-31.710133	-31.73394979941006	Subarray start row	650	650
[deg] Pointing Roll	268.993504	269.1584482336085	Subarray row count	128	128
[mm] SIM focus pos	-0.684267	-0.6828225247311905	Alternating exposures requested	N	N
[mm] SIM defocus	0	0.001444936568705701	[s] Primary exposure time	0.000000	0.4
[mm] SIM translation stage pos	-190.132523	-190.1425803651734			
[mm] SIM translation stage offset	0	0.01005778216563158			
[s] Observation start time (MET)	78111779.184000	78110581.72694901			
Observation start date	2000-06-23T01:41:55	2000-06-23T01:23:01			
[s] Observation end time (MET)	78121665.184000	78121974.602369			
Observation end date	2000-06-23T04:26:41	2000-06-23T04:32:54			
Read mode	TIMED	TIMED			

## 2.3 Aspect



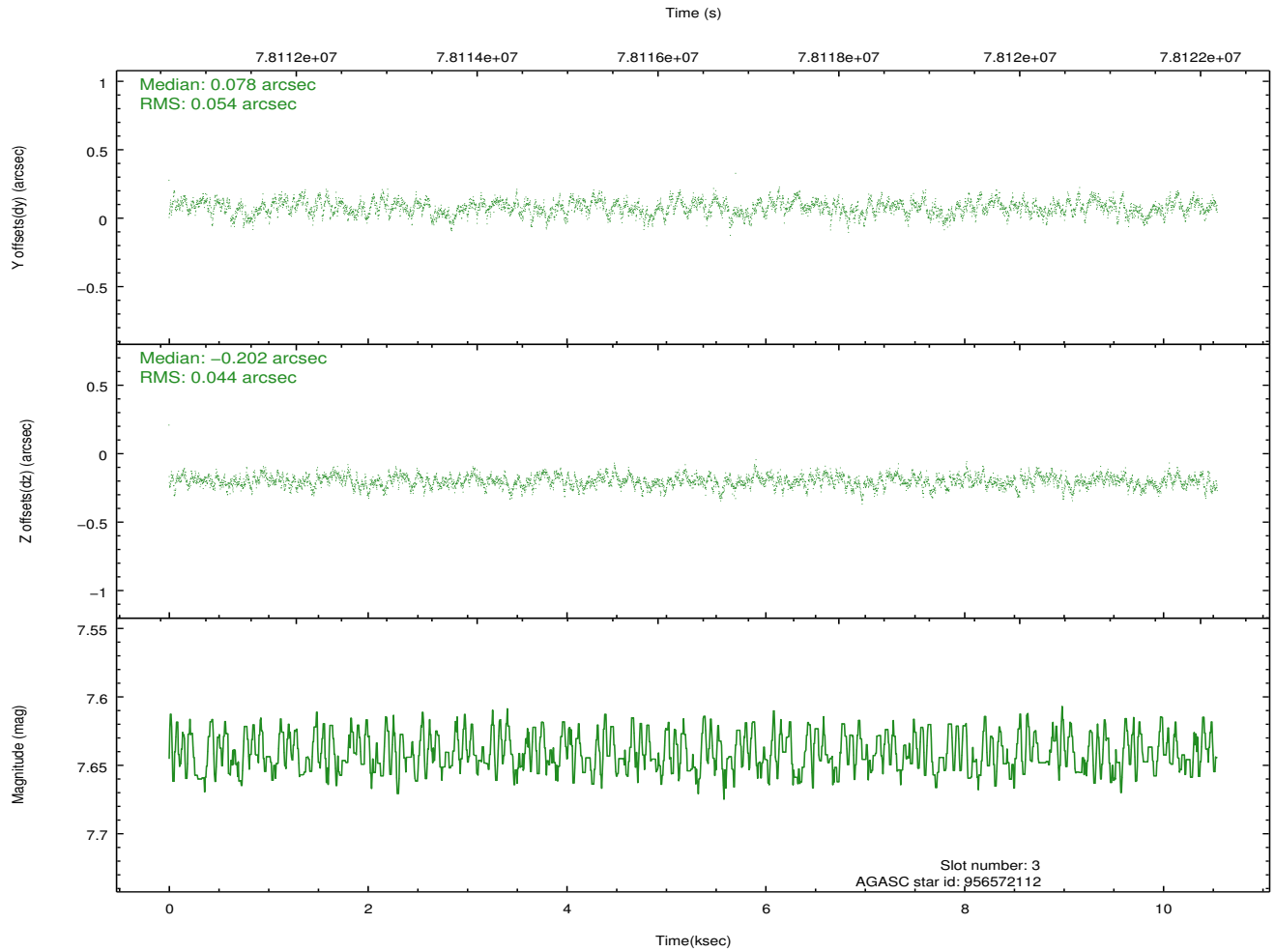
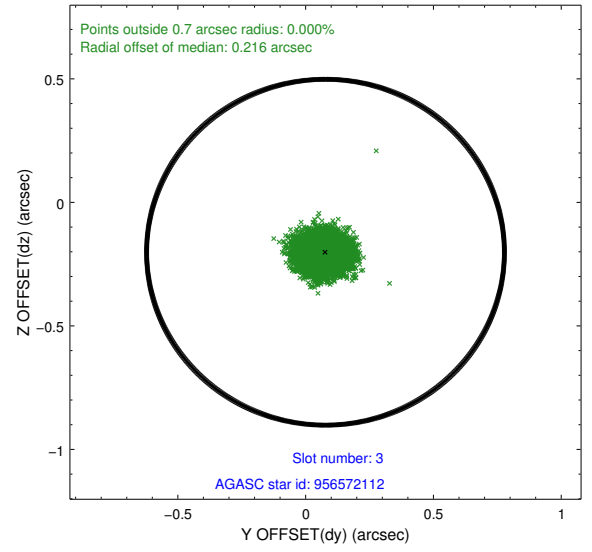
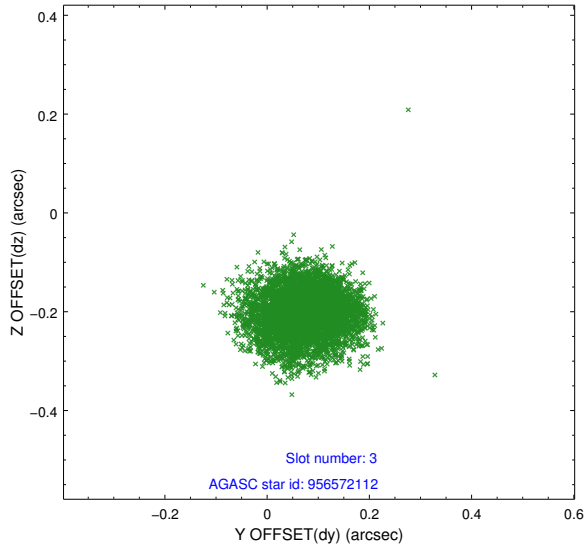


### Slot Statistics

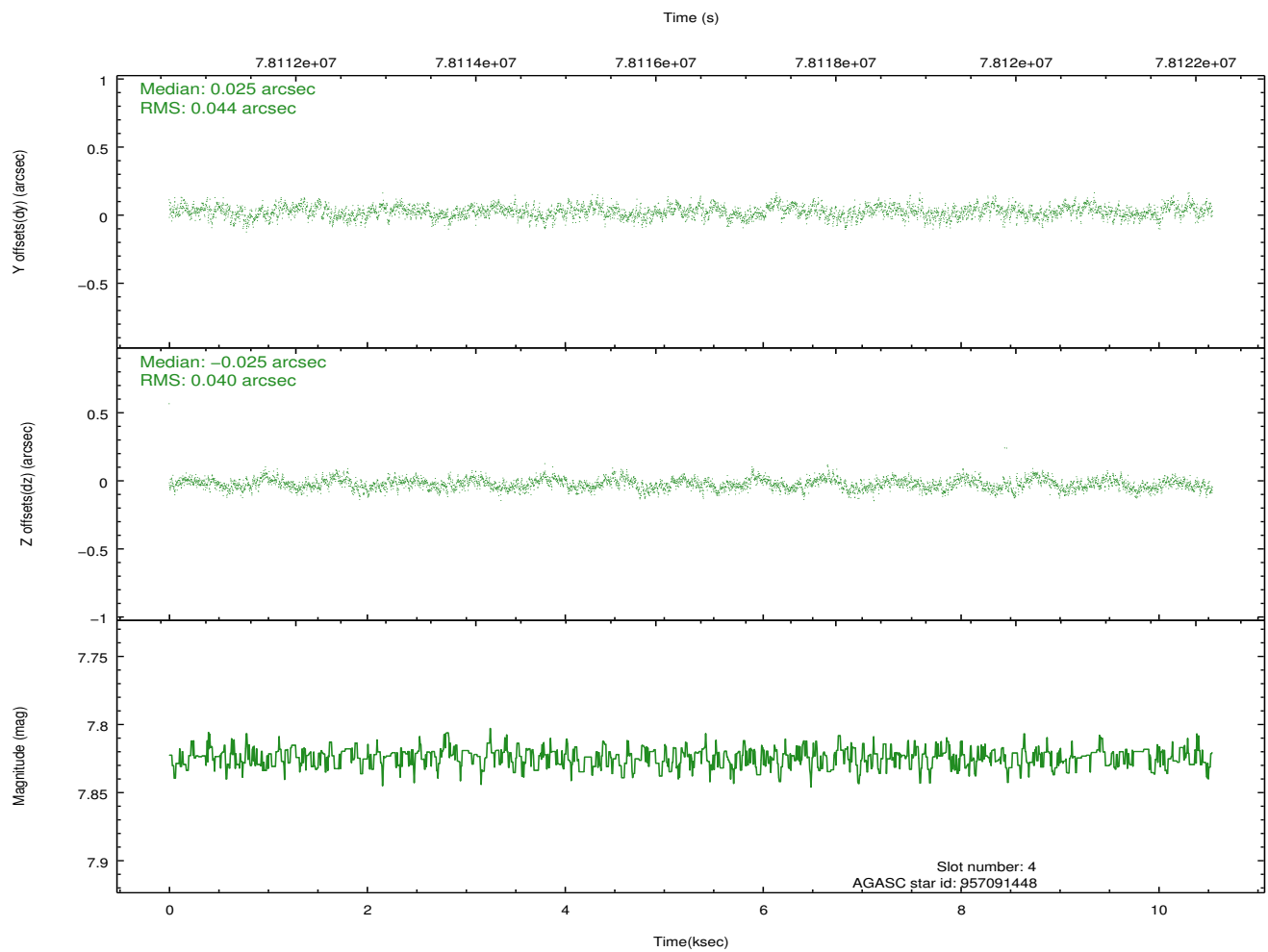
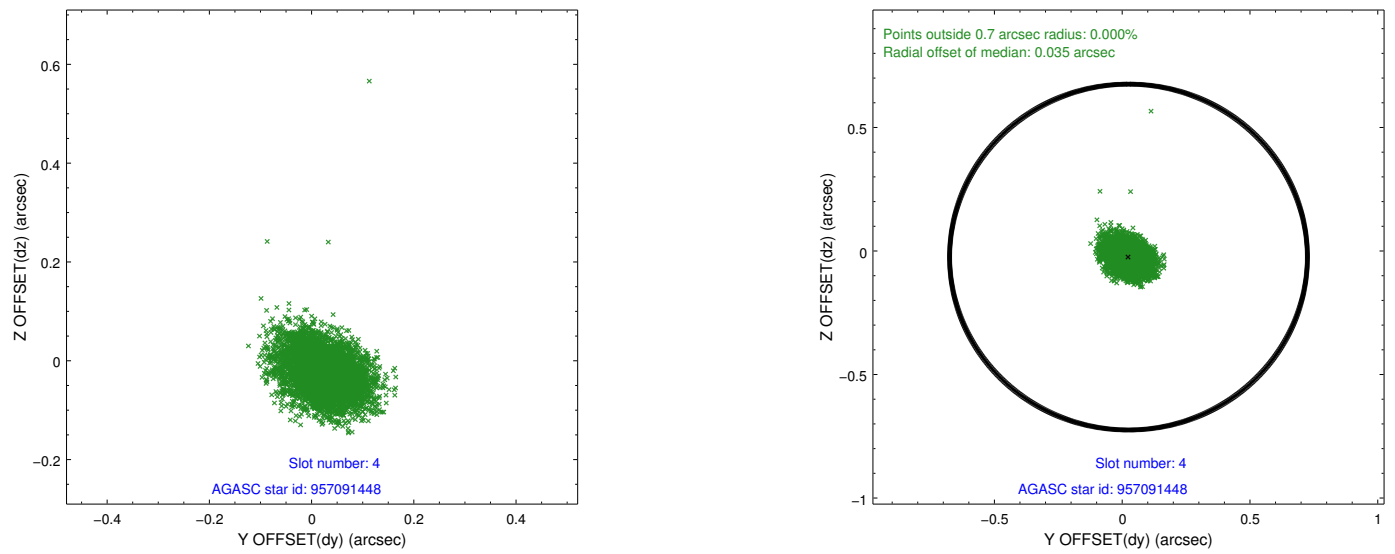
slot	status	id	mag	n_pts	med_dy	med_dz	dr1	dr2	ra	dec	mean_y	mean_z
0	FID	ACIS-S-2	7.11	2571	-0.033	0.000	0.008	0.013	0.000000	0.000000	-753.82	-1726.13
1	FID	ACIS-S-4	7.21	2571	-0.006	0.016	0.006	0.010	0.000000	0.000000	2159.26	181.86
2	FID	ACIS-S-5	7.24	2571	0.008	-0.007	0.009	0.015	0.000000	0.000000	-1805.99	176.07
3	GUIDE	956572112	7.64	5143	0.078	-0.202	0.074	0.117	223.861077	-31.418161	-1001.29	-2305.27
4	GUIDE	957091448	7.82	5143	0.025	-0.025	0.062	0.101	224.977023	-32.370724	2361.18	1171.02
5	GUIDE	958277040	8.92	5144	0.057	-0.117	0.080	0.133	225.059014	-31.205389	-1836.50	1364.39
6	GUIDE	956572256	9.17	5143	-0.399	0.542	0.125	0.186	224.546659	-31.483804	-810.65	-194.19
7	GUIDE	957091616	9.67	5139	0.243	-0.202	0.096	0.158	224.195212	-31.993939	1047.61	-1234.68

## 2.4 Star Slots

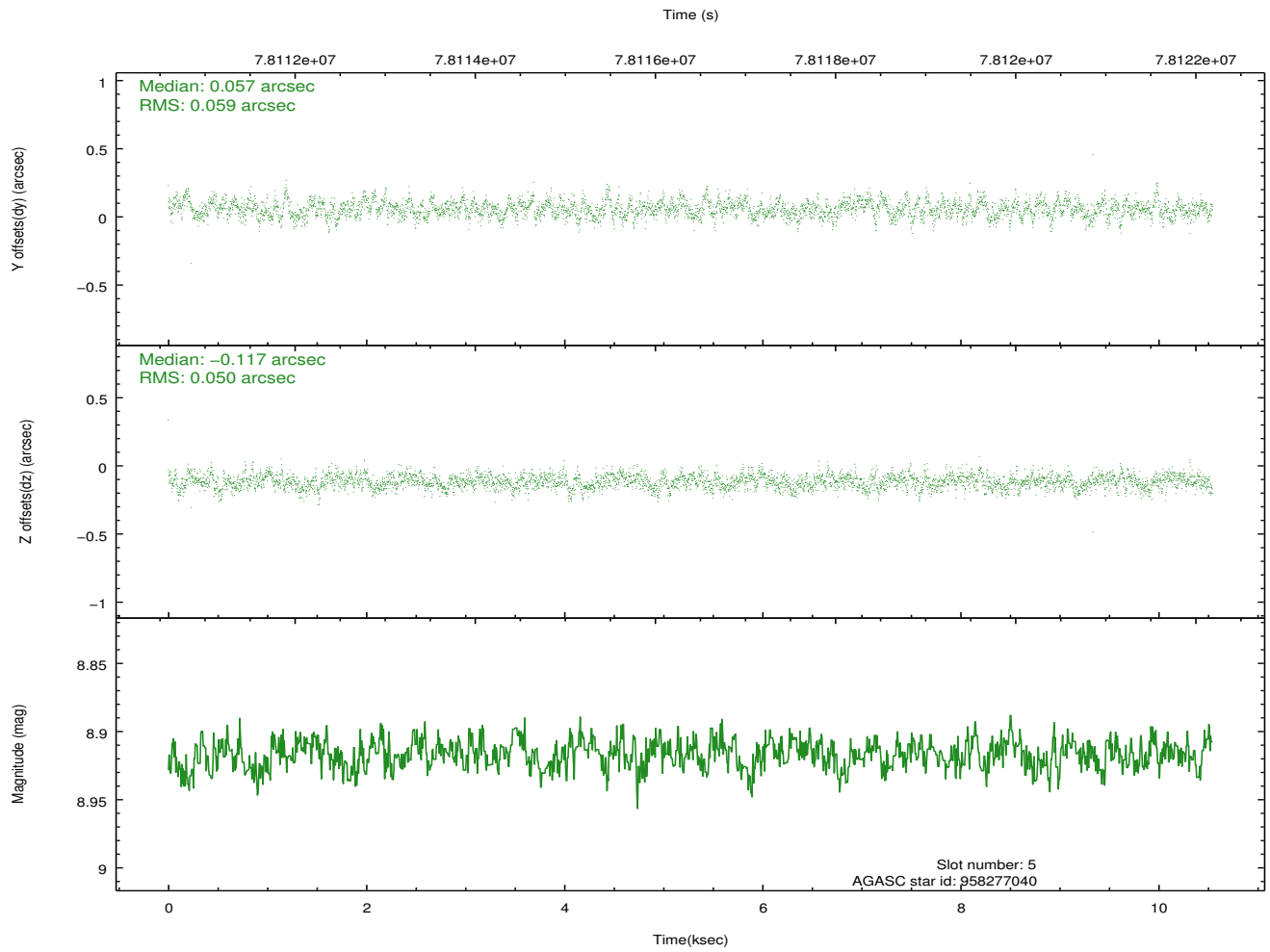
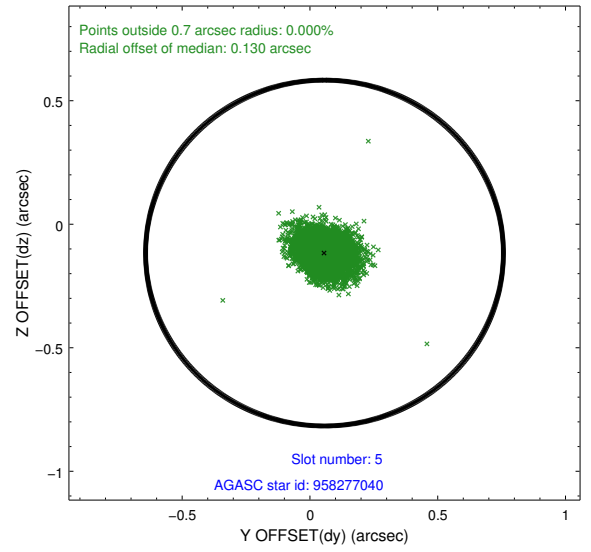
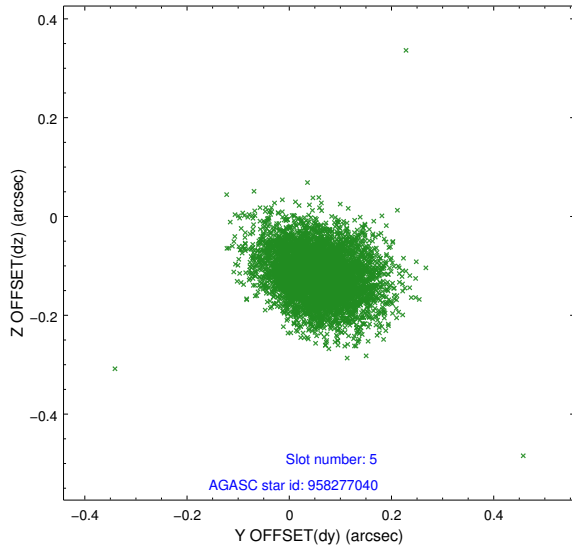
### 2.4.1 Slot 3



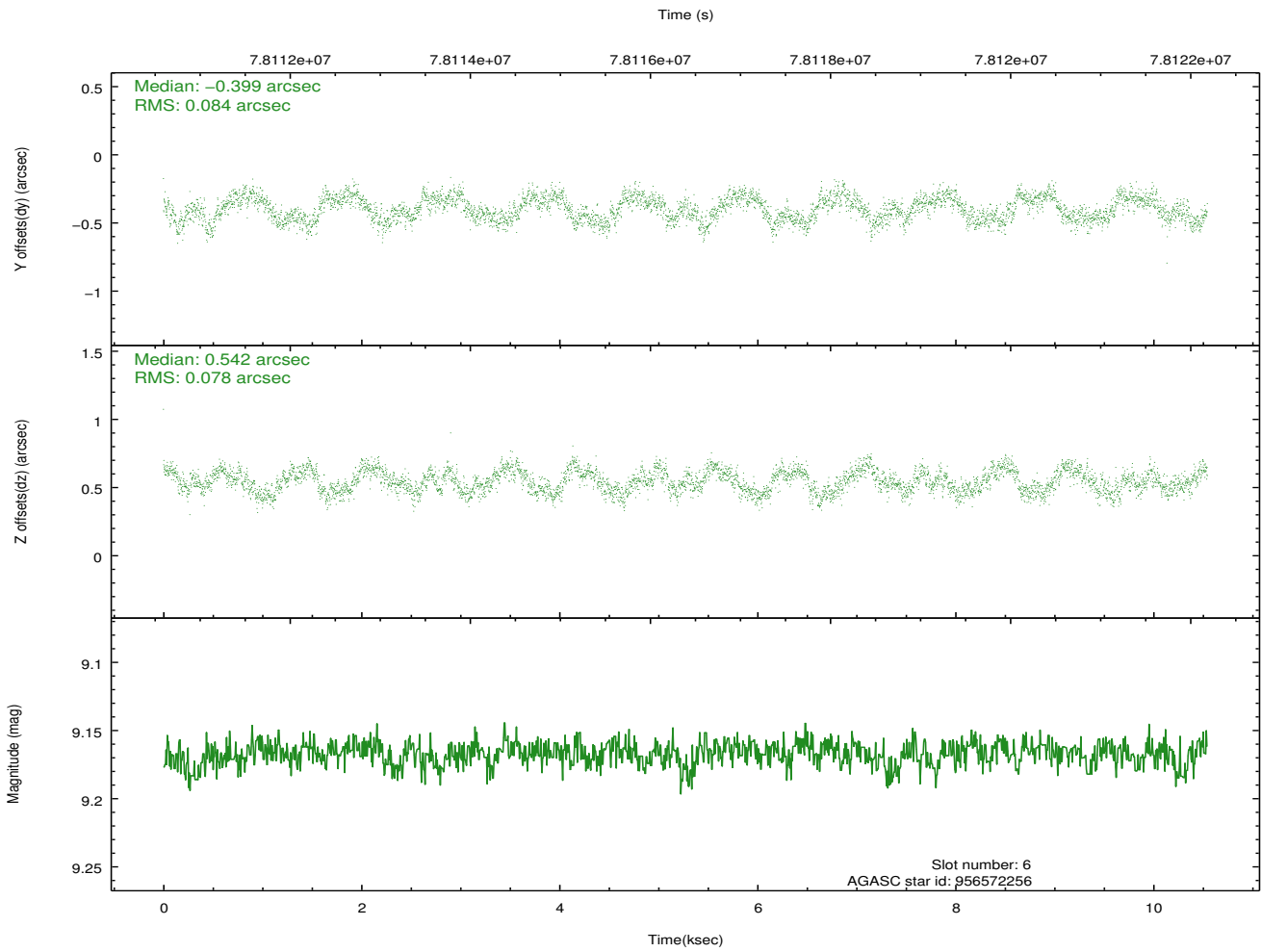
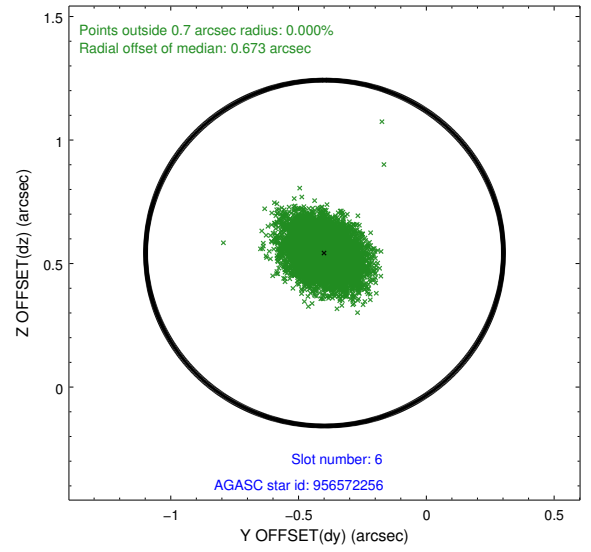
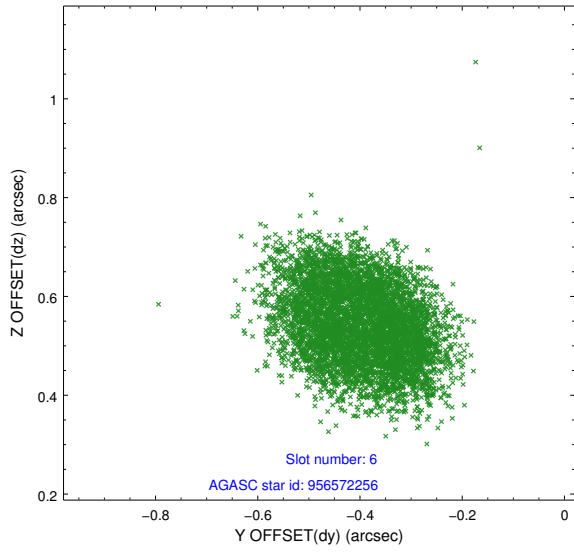
## 2.4.2 Slot 4



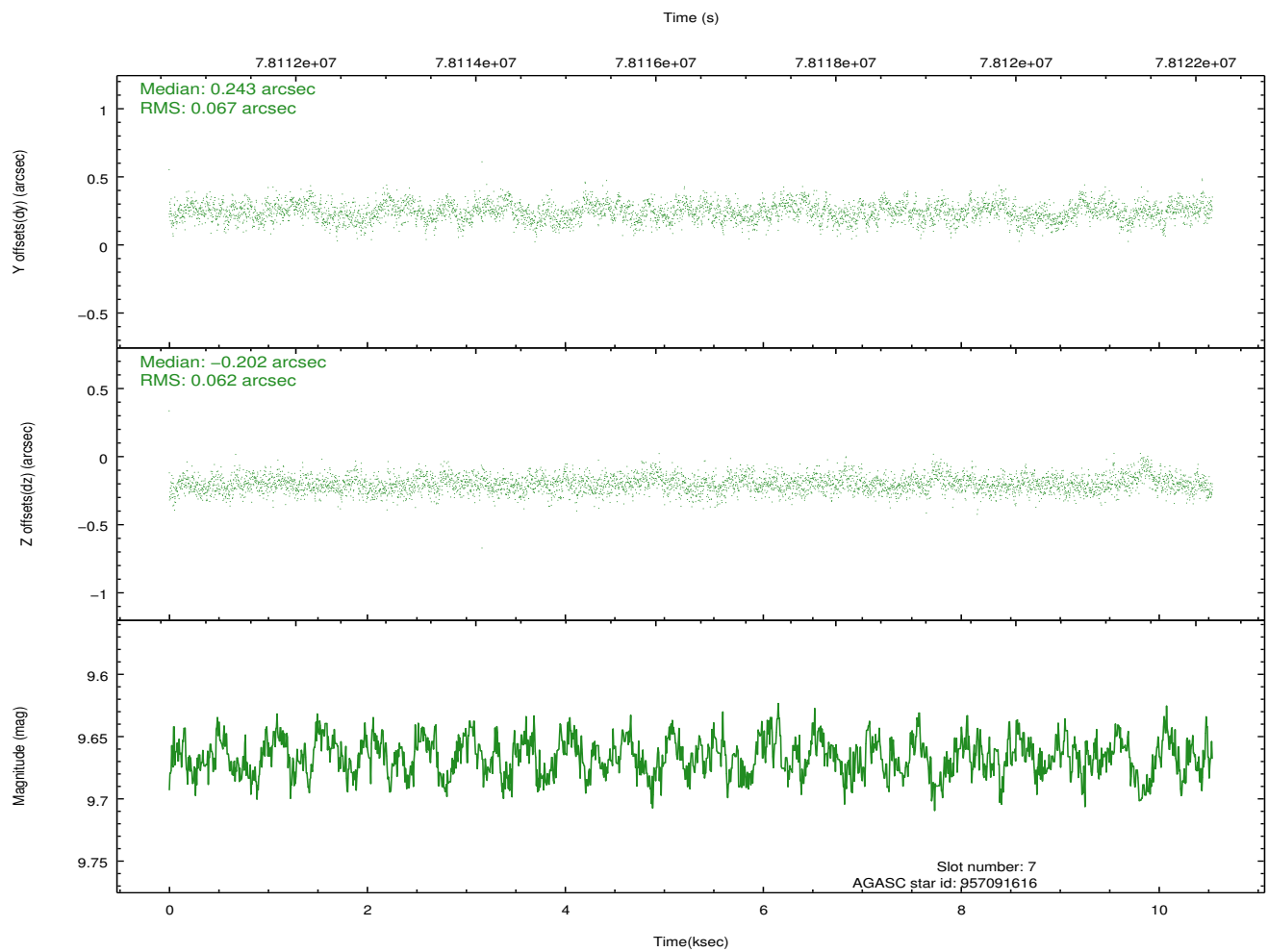
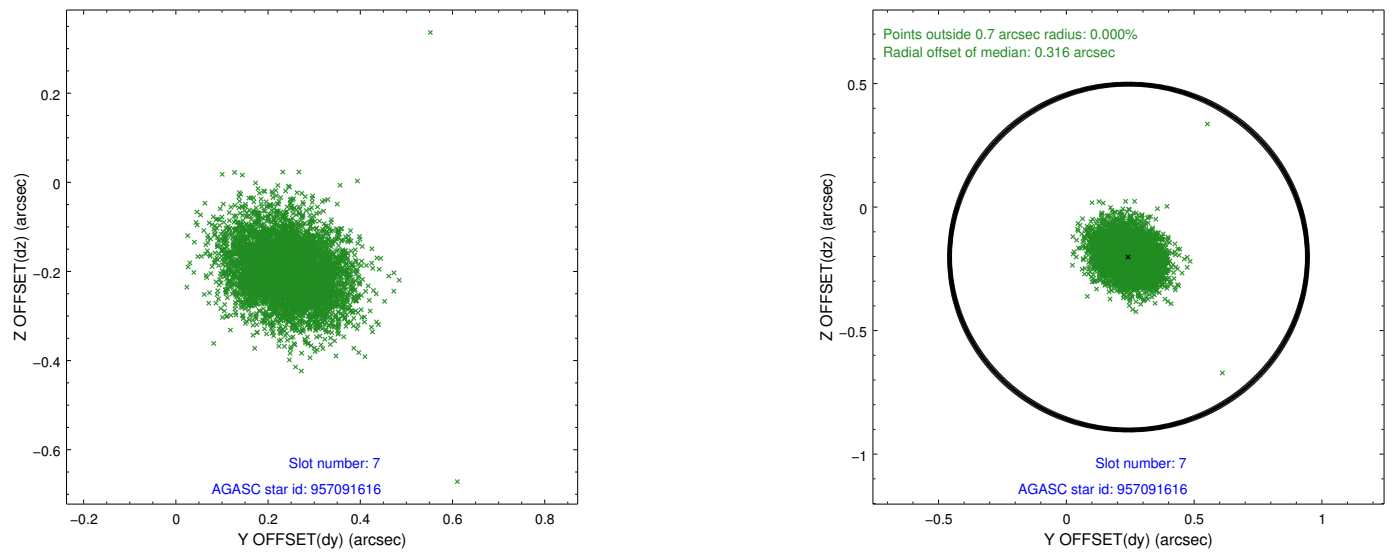
### 2.4.3 Slot 5



### 2.4.4 Slot 6

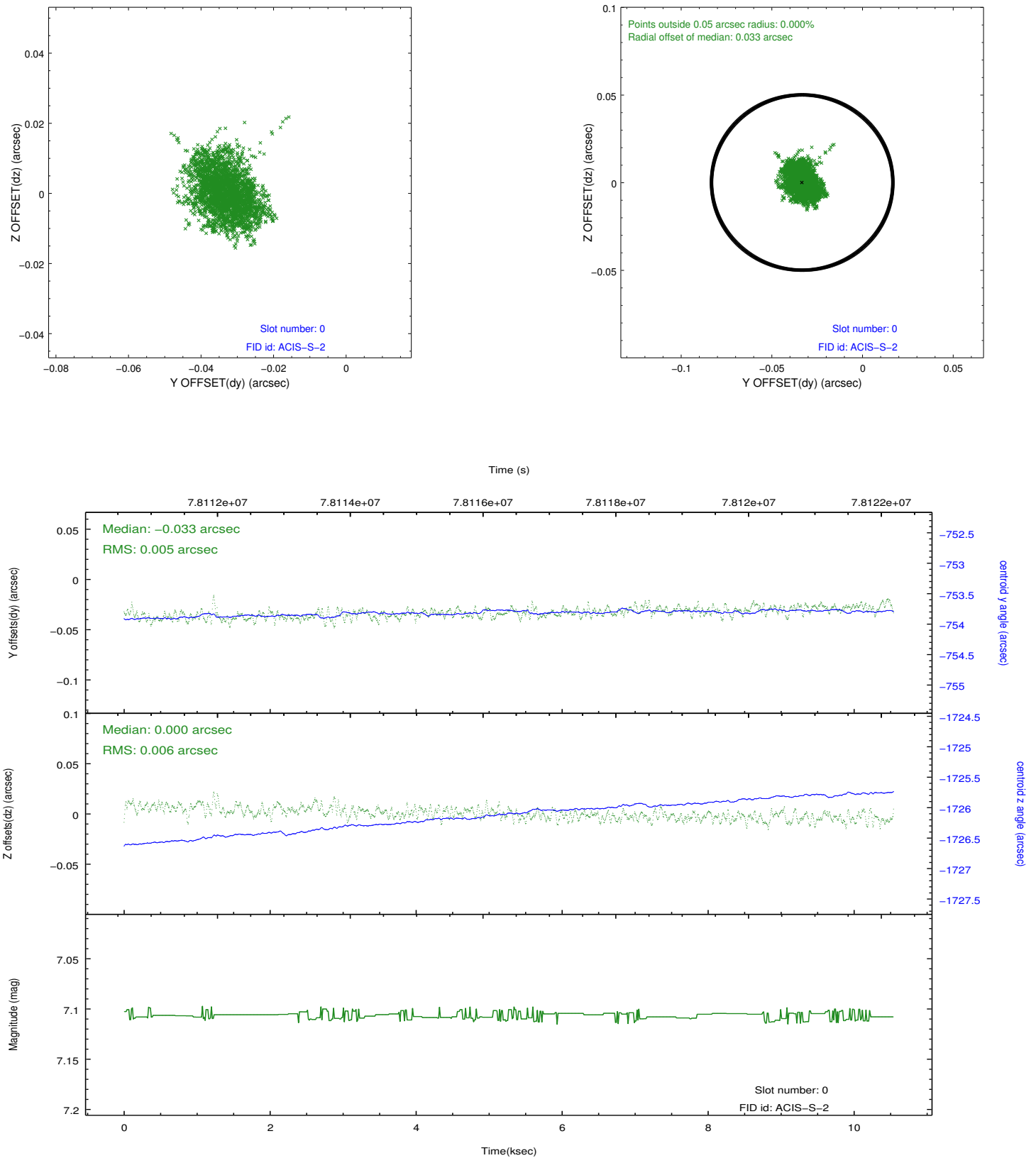


## 2.4.5 Slot 7

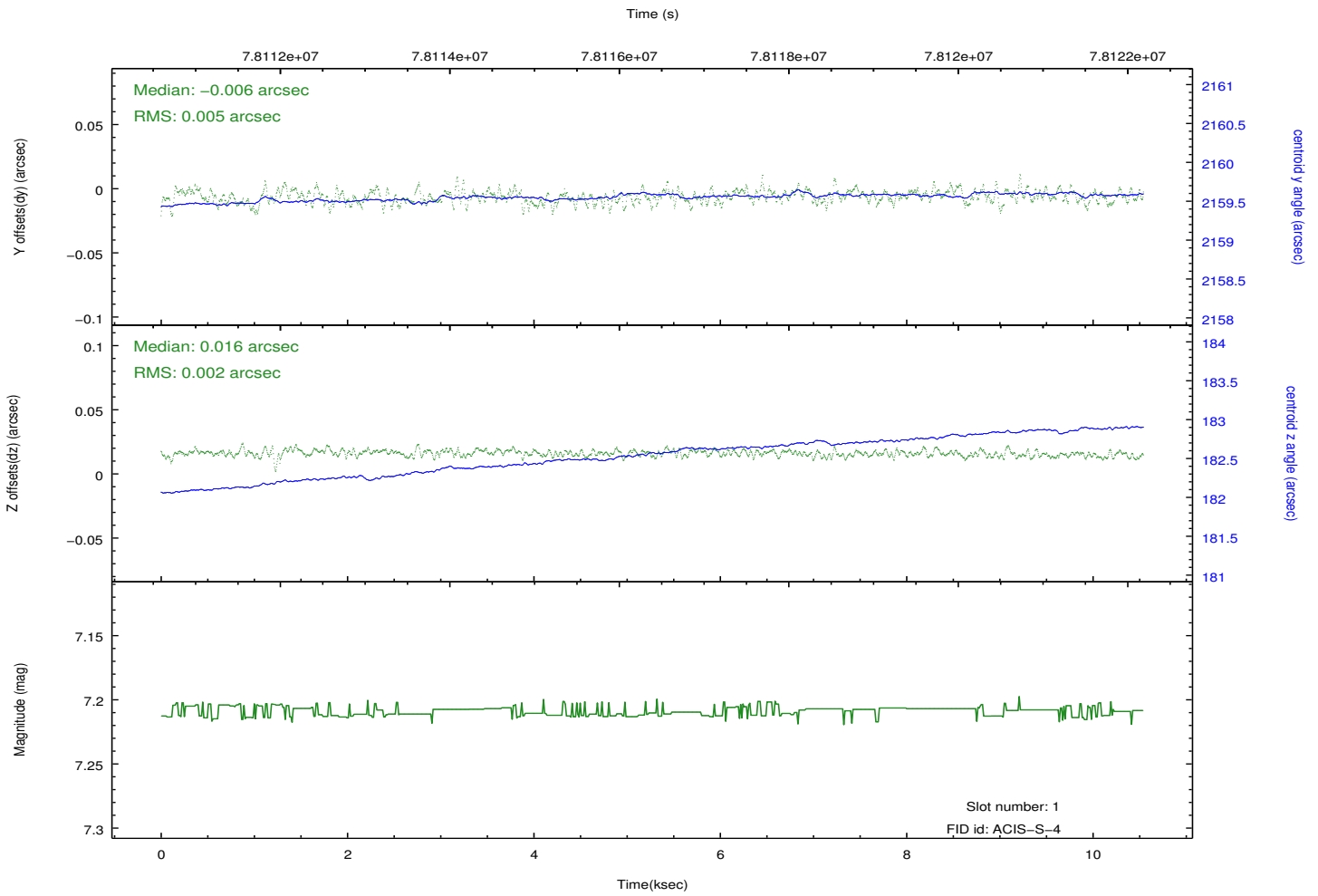
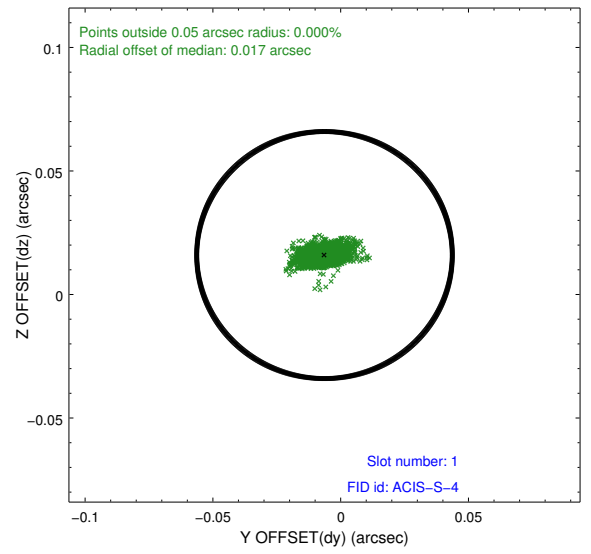
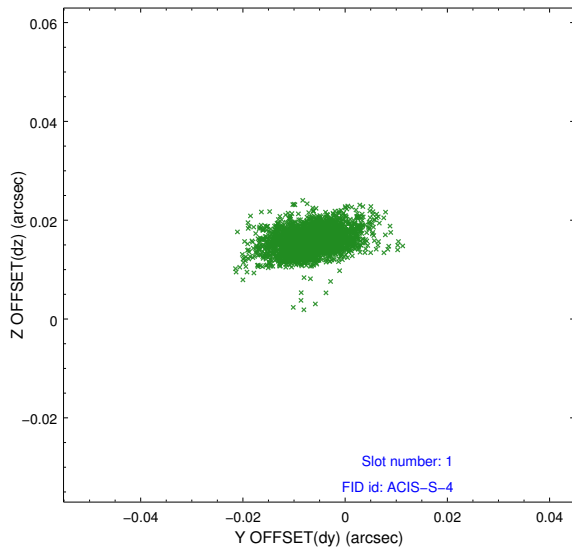


## 2.5 FID Slots

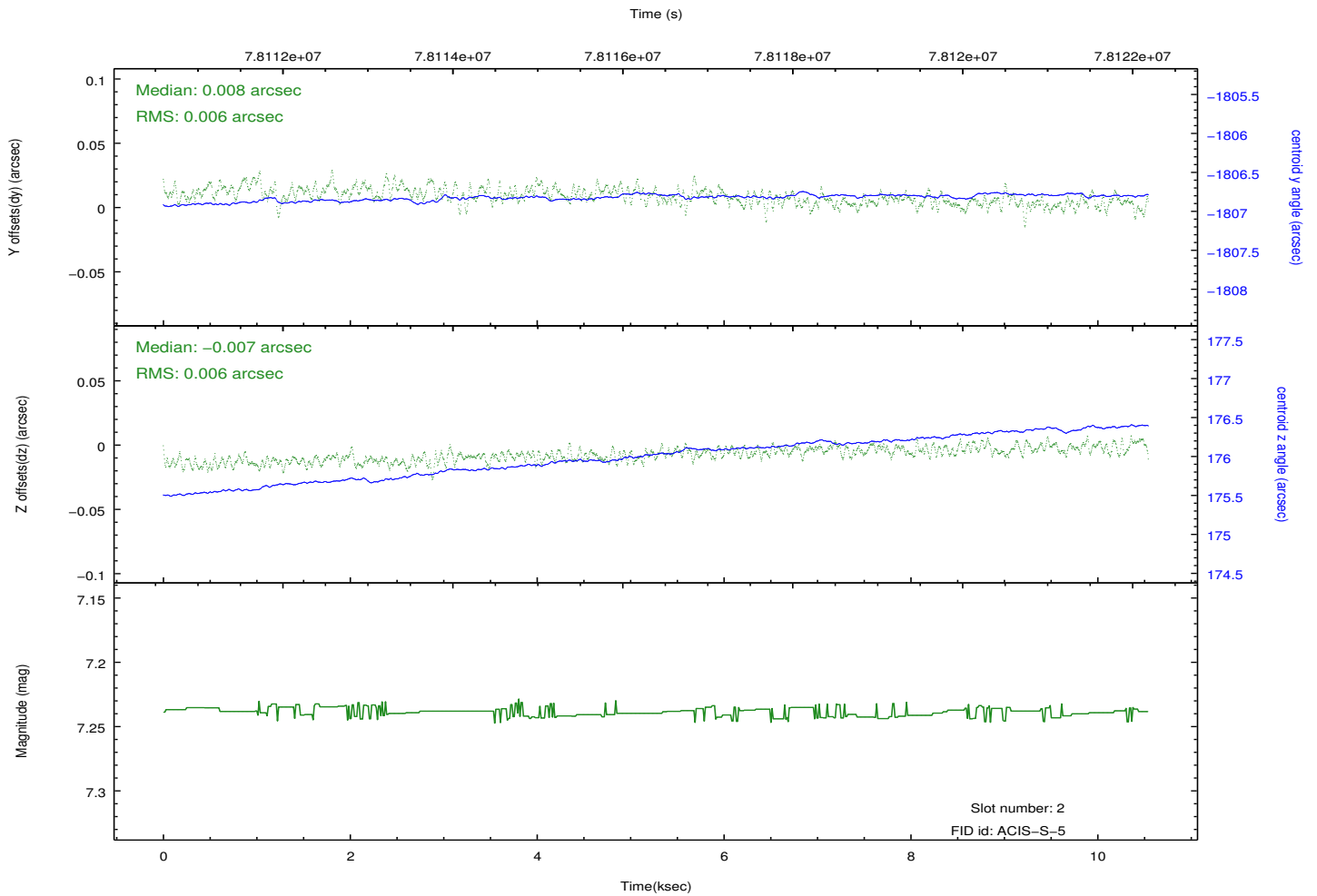
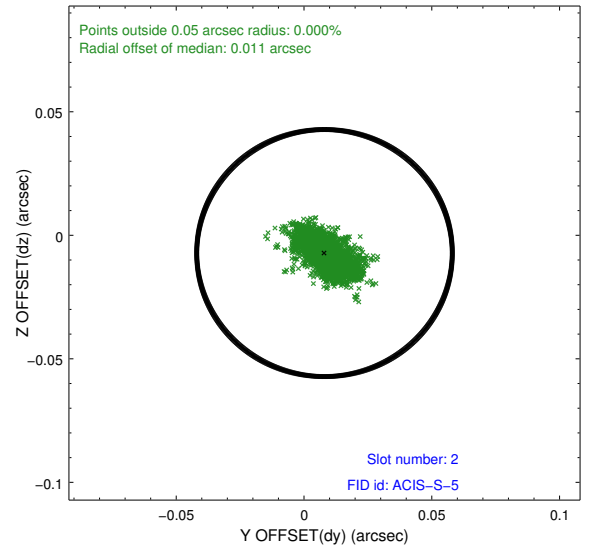
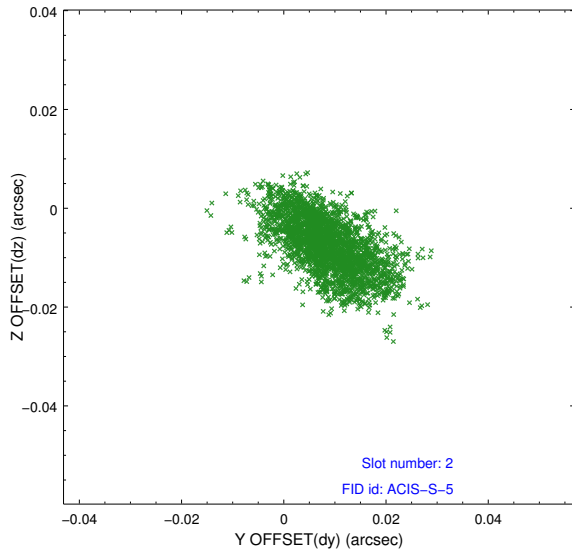
### 2.5.1 Slot 0



## 2.5.2 Slot 1



### 2.5.3 Slot 2



# A Summary

## A.1 Status

V&V Scientist	Jen Lauer
V&V Date (YYYY-MM-DD)	2012.08.31
V&V Edition	1
V&V Disposition and Status	OK
V&V Charge Time	10.542

## A.2 Comments

Chip and target are away from the aimpoint.