

V&V Reference Report

L2 ASCDS Version : 8.4.5

Observation 733 - L2 Version 4
Chandra X-Ray Center

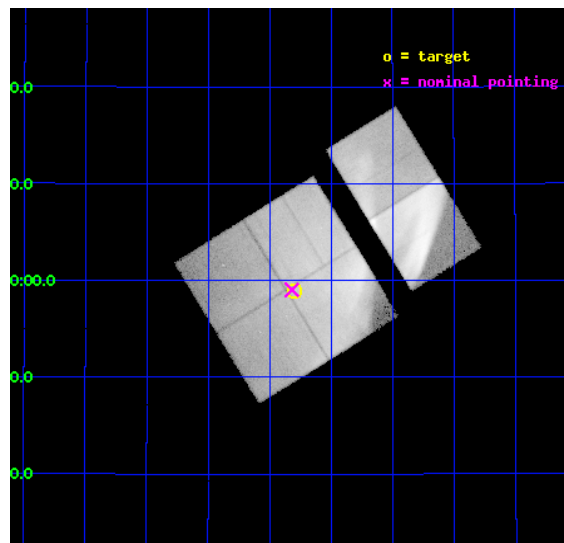
L2 Processing Date : Aug 24 2012

Contents

1	Front	2
2	OBI	3
2.1	OBI	3
2.1.1	Images	3
2.1.2	Bias	3
2.1.3	Parameters	4
2.1.4	Events	4
2.2	Compared Parameters	5
2.3	Aspect	6
2.4	Star Slots	9
2.4.1	Slot 3	9
2.4.2	Slot 4	10
2.4.3	Slot 5	11
2.4.4	Slot 6	12
2.4.5	Slot 7	13
2.5	FID Slots	14
2.5.1	Slot 0	14
2.5.2	Slot 1	15
2.5.3	Slot 2	16
A	Summary	17
A.1	Status	17
A.2	Comments	17

1 Front

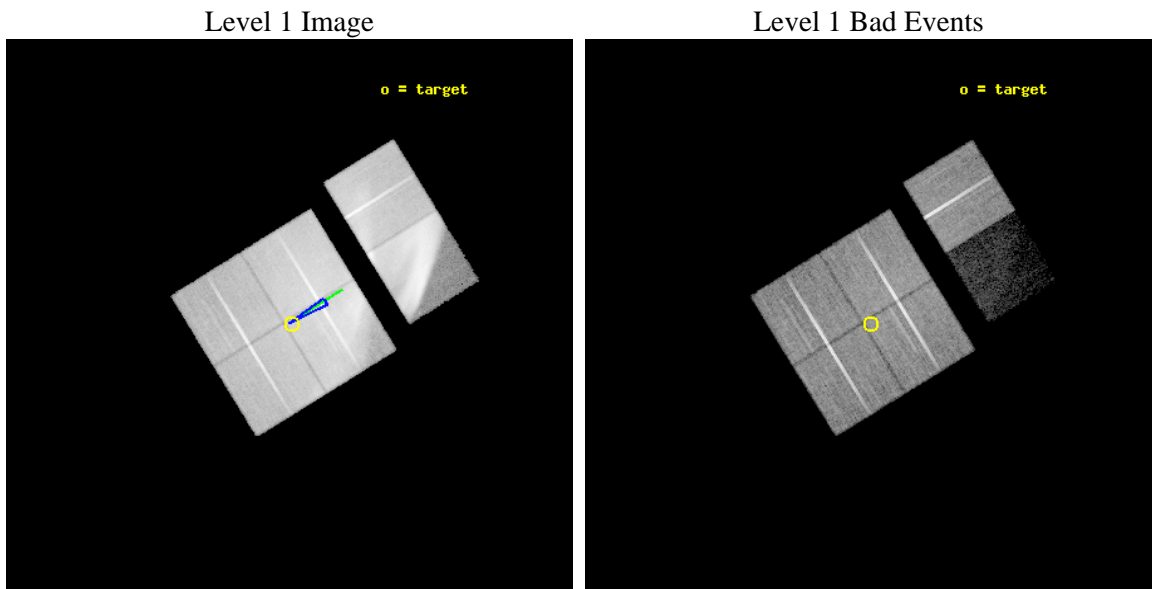
seq_num	500029	Sequence number
obs_id	733	Observation id
title	BLAST WAVE DYNAMICS, SUPERNOVA REMNANT ENVIRONMENTS, AND THE EVOLUTION OF THE CYGNUS LOOP	Proposal title
observer	Dr. James Graham	Principal investigator
object	CYGNUS LOOP WEST	Source name
dtcycle	0	
cycle	P	events from which exps? Prim/Second/Both
ra_targ	311.575	Observer's specified target RA [deg]
dec_targ	30.981111	Observer's specified target Dec [deg]
ra_nom	311.57982816404	Nominal RA [deg]
dec_nom	30.984043553233	Nominal Dec [deg]
roll_nom	58.358732576252	Nominal Roll [deg]
revision	4	Processing version of data
ontime	31456.000029281	Sum of GTIs [s]
livetime	31057.685216381	Livetime [s]
ontime0	31456.000029281	Sum of GTIs [s]
ontime1	31456.000029281	Sum of GTIs [s]
ontime2	31456.000029281	Sum of GTIs [s]
ontime3	31456.000029281	Sum of GTIs [s]
ontime6	31456.000029281	Sum of GTIs [s]
ontime7	31456.000029281	Sum of GTIs [s]
l2events	1340406	Number of level 2 events



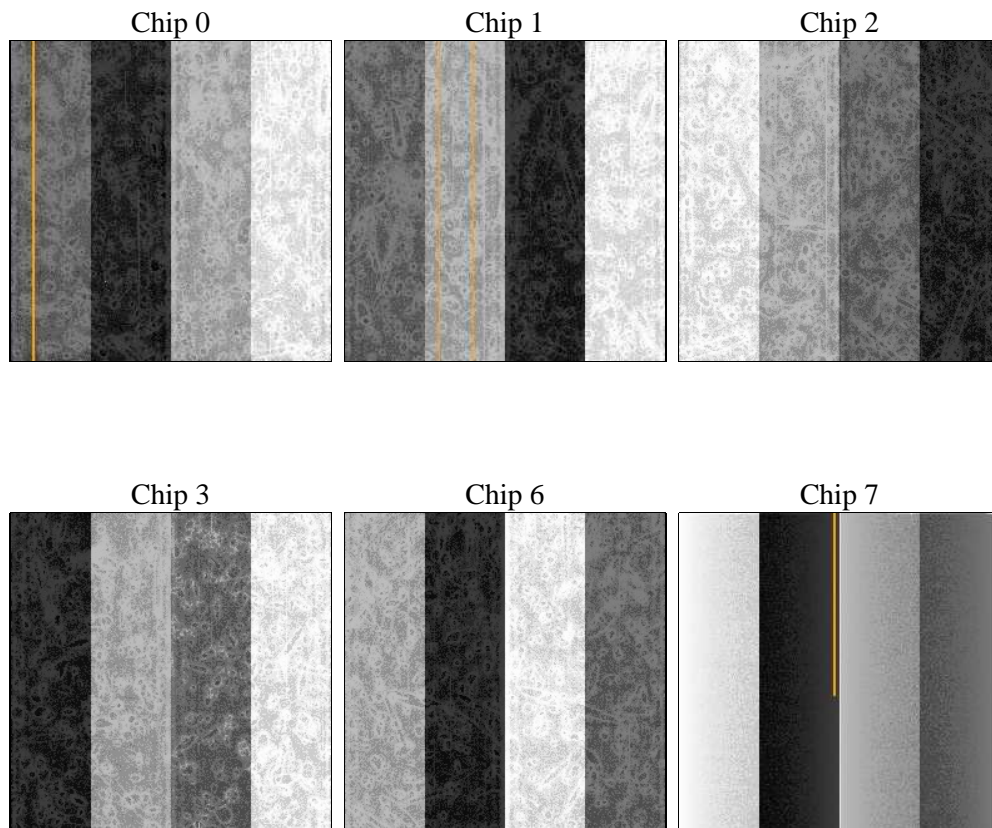
2 OBI

2.1 OBI

2.1.1 Images



2.1.2 Bias



2.1.3 Parameters

obi_num	0	Obi number	sched_exp_time	31000.000000	[s] Scheduled observation exposure time
ascdsver	8.4.5	Processing system revision	ontime	31456.000029281	Sum of GTIs [s]
caldbver	4.5.1.1	 	ontime0	31456.000029281	Sum of GTIs [s]
date	2012-08-24T05:57:50	Date and time of file creation	ontime1	31456.000029281	Sum of GTIs [s]
revision	4	Processing version of data	ontime2	31456.000029281	Sum of GTIs [s]
			ontime3	31456.000029281	Sum of GTIs [s]
			ontime6	31456.000029281	Sum of GTIs [s]
			ontime7	31456.000029281	Sum of GTIs [s]
			l1events	2213755	Number of level 1 events

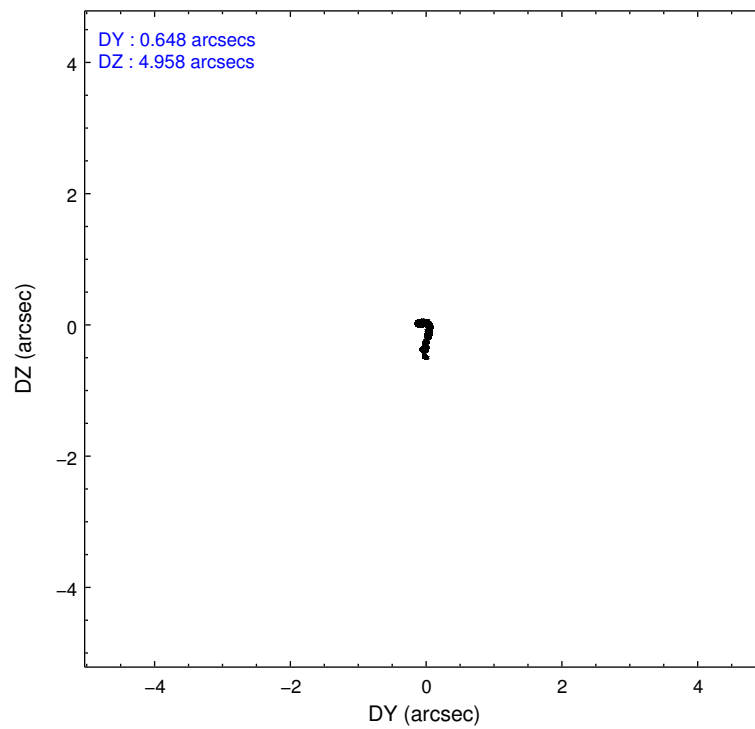
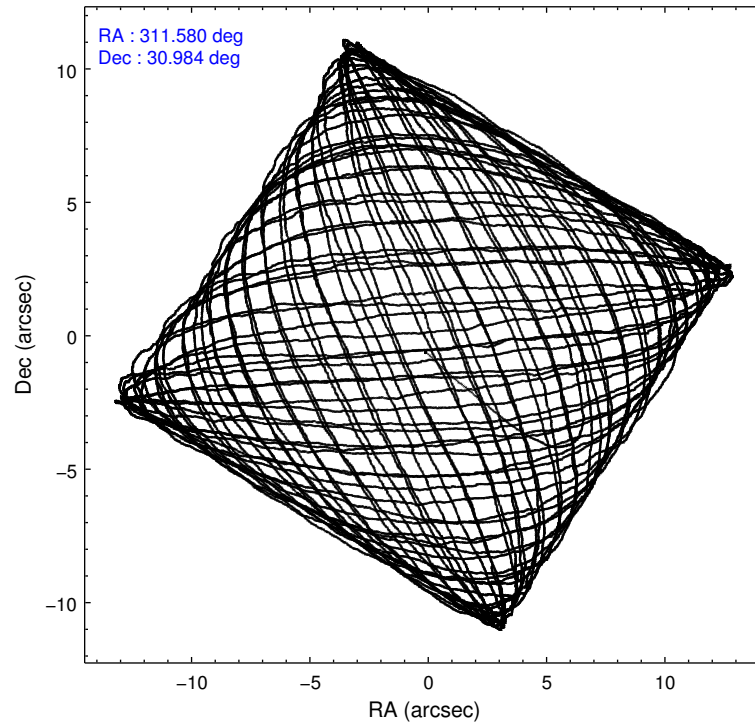
2.1.4 Events

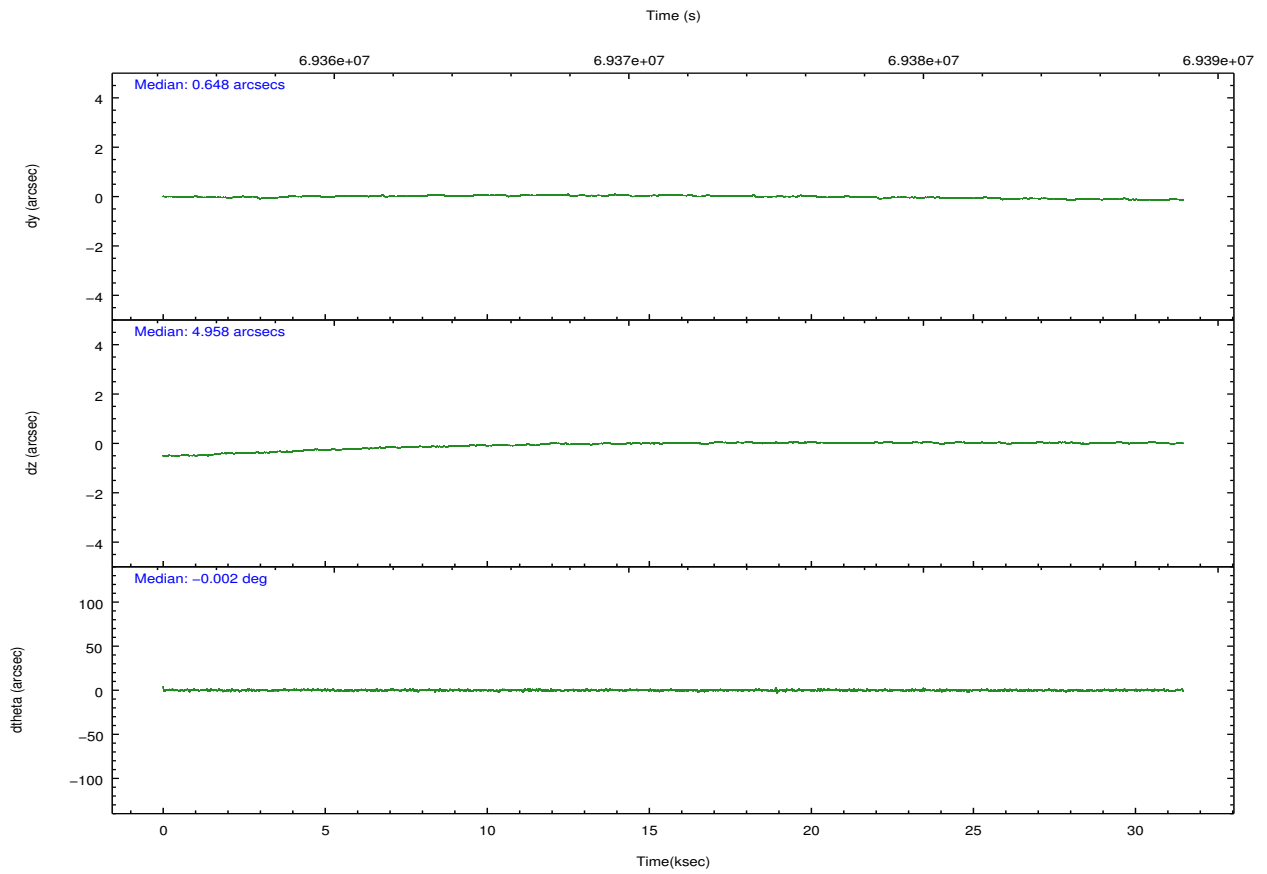
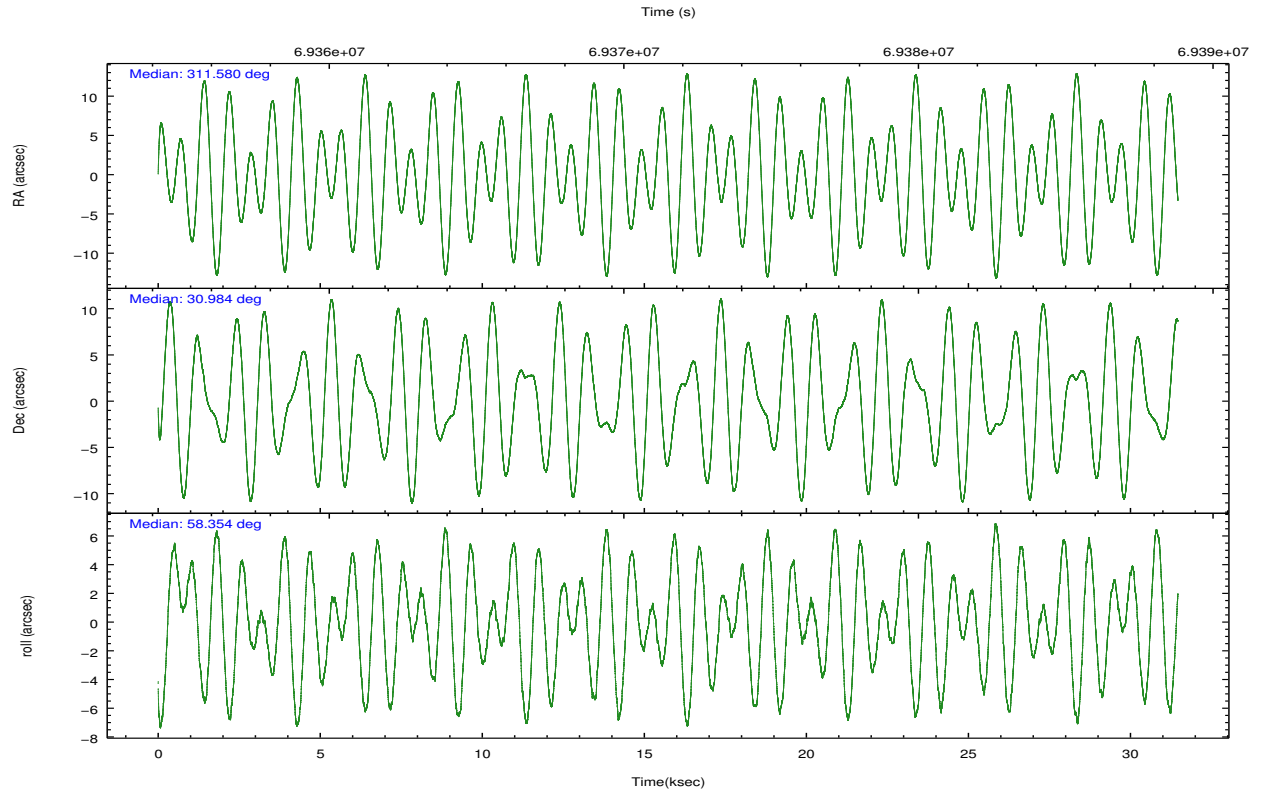
	ccd 0	ccd 1	ccd 2	ccd 3	ccd 6	ccd 7		ccd 0	ccd 1	ccd 2	ccd 3	ccd 6	ccd 7
level 1 events	231007	268796	423732	481405	361073	447742	grade 0 events	72677	112730	225653	293768	180644	214428
rejected events	147177	141064	175454	161897	163179	18162		31%	41%	53%	61%	50%	47%
rejected %	63%	52%	41%	33%	45%	4%	grade 1 events	322	437	1006	1334	762	253
								0%	0%	0%	0%	0%	0%
							grade 2 events	6252	8545	15209	18224	11179	100787
								2%	3%	3%	3%	3%	22%
							grade 3 events	2034	2854	3481	3870	2779	43729
								0%	1%	0%	0%	0%	9%
							grade 4 events	2105	2694	3495	3766	2861	42079
								0%	1%	0%	0%	0%	9%
							grade 5 events	1126	1364	1590	1993	1546	5693
								0%	0%	0%	0%	0%	1%
							grade 6 events	1433	1862	1984	1967	1694	31989
								0%	0%	0%	0%	0%	7%
							grade 7 events	145058	138310	171314	156483	159608	8784
								62%	51%	40%	32%	44%	1%

2.2 Compared Parameters

Parameter	Planned	Actual	Parameter	Planned	Actual
Instrument	ACIS	ACIS	Obspar format version number	7	7
Detector	ACIS-012367	ACIS-012367	Obspar file type	PREDICTED	ACTUAL
Grating	NONE	NONE	Obspar update status	NONE	UPDATED
Data mode	FAINT	FAINT	Number of optional ACIS chips dropped	0	0
Observation mode	POINTING	POINTING	On-chip summing requested	N	N
[deg] Pointing RA	311.578624	311.579828164043	Subarray requested	NONE	NONE
[deg] Pointing Dec	30.956421	30.98404355323311	Alternating exposures requested	N	N
[deg] Pointing Roll	58.150666	58.35873257625197	[s] Primary exposure time	0.000000	3.2
[deg] Roll angle	60.000000	60.000000			
[deg] Roll tolerance	5.000000	5.000000			
Roll constraint allows 180D rotation	N	N			
[mm] SIM focus pos	-0.782348	-0.7809083437167272			
[mm] SIM defocus	0	0.001439871863259334			
[mm] SIM translation stage pos	-233.592463	-233.5874344608287			
[mm] SIM translation stage offset	0	-0.005018542100998502			
[s] Observation start time (MET)	69356232.184000	69354759.780553			
Observation start date	2000-03-13T17:36:08	2000-03-13T17:12:39			
[s] Observation end time (MET)	69387232.184000	69388512.51928701			
Observation end date	2000-03-14T02:12:48	2000-03-14T02:35:12			
Read mode	TIMED	TIMED			

2.3 Aspect



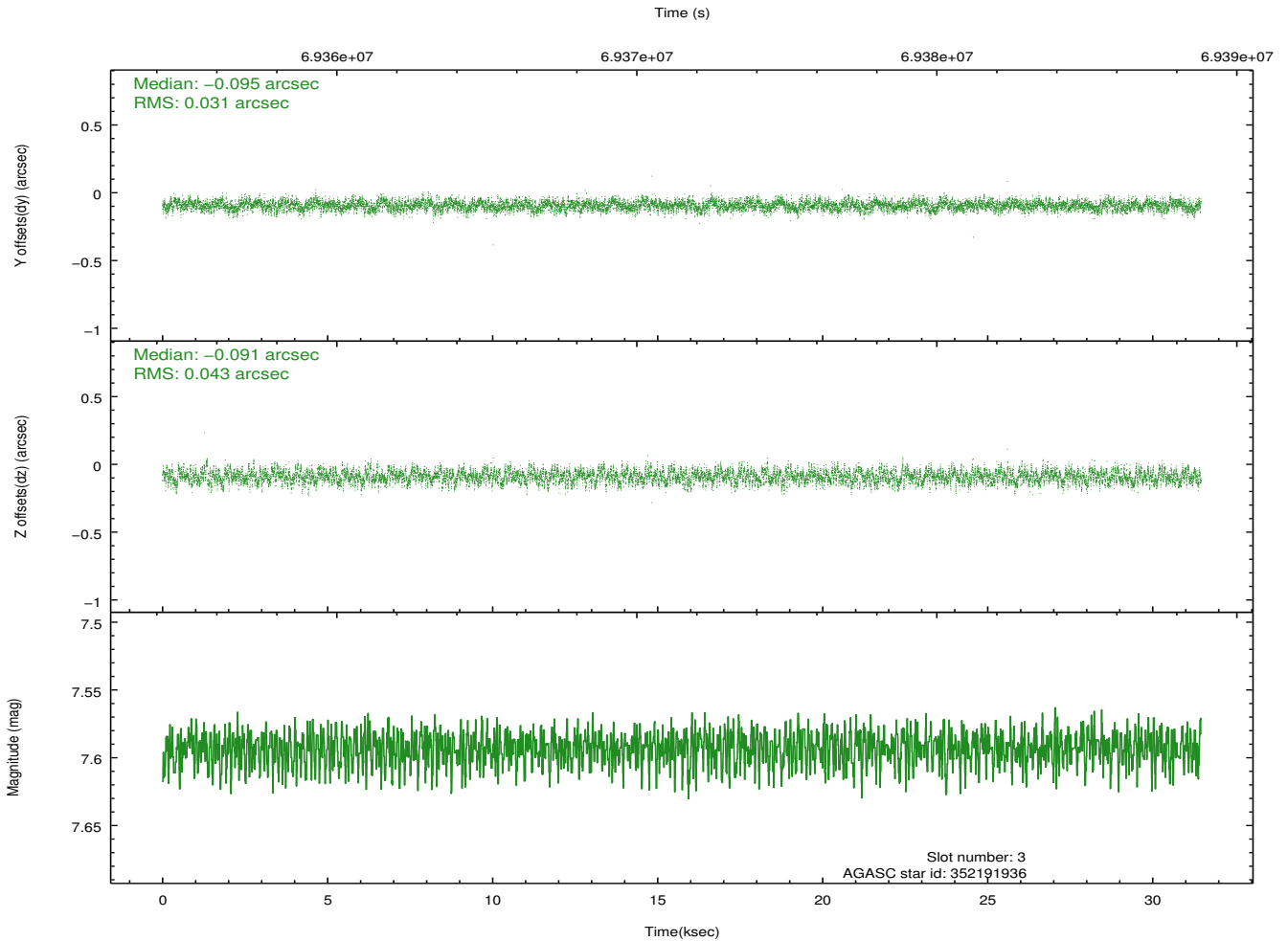
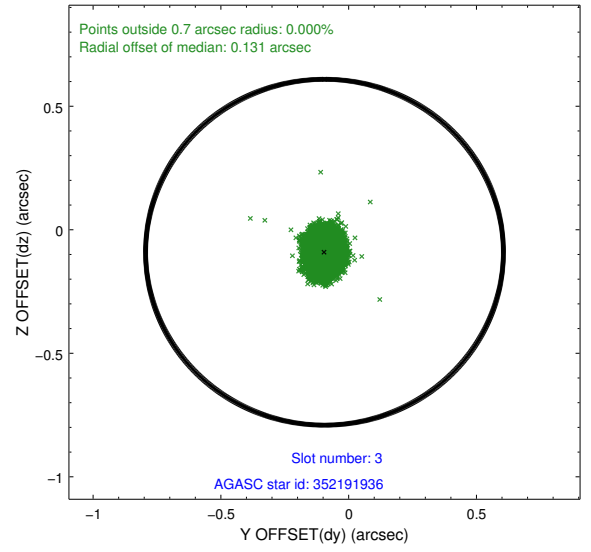
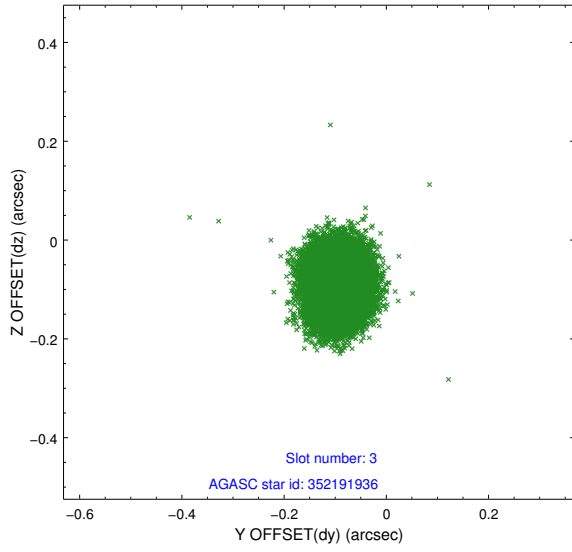


Slot Statistics

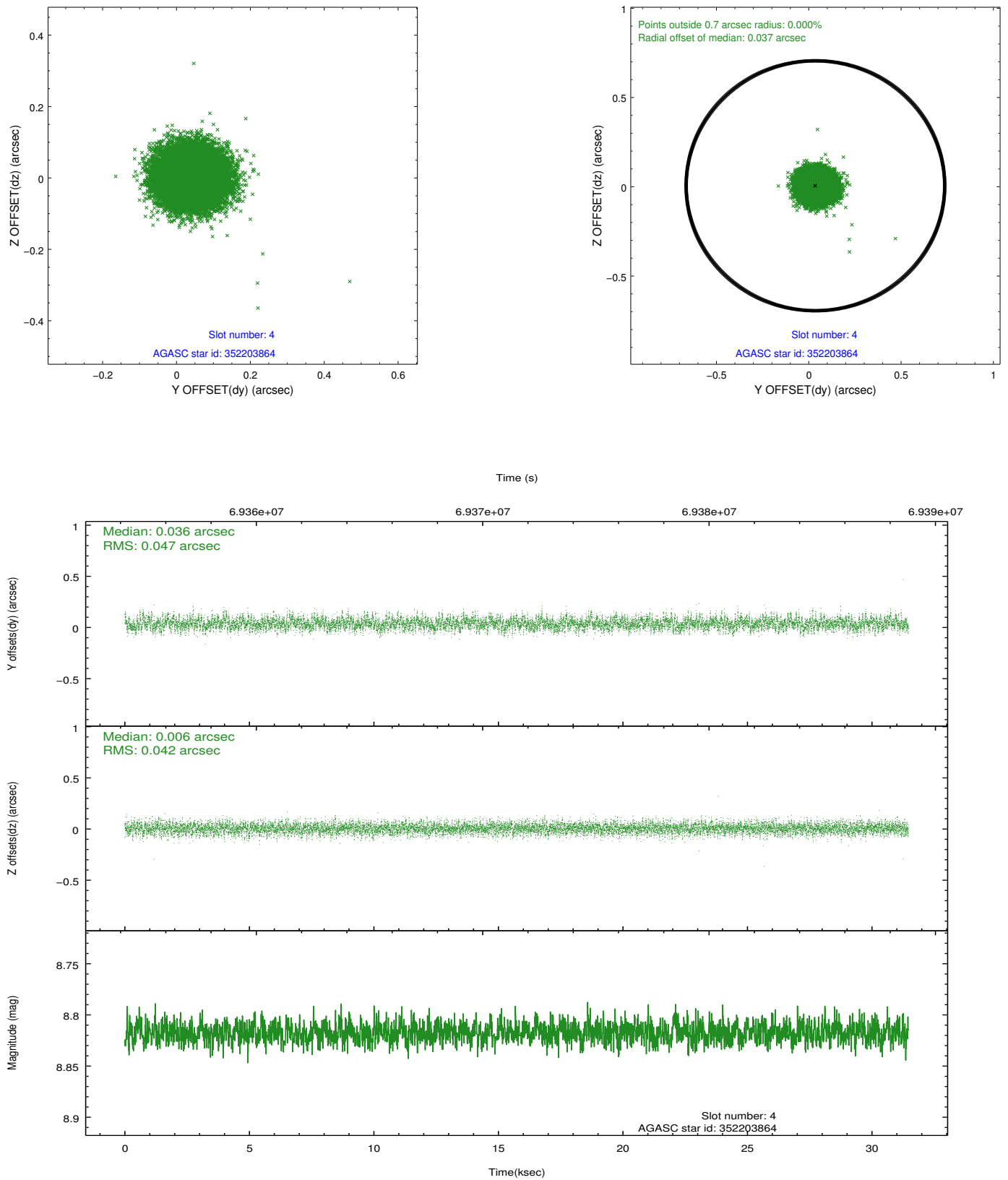
slot	status	id	mag	n_pts	med_dy	med_dz	dr1	dr2	ra	dec	mean_y	mean_z
0	FID	ACIS-I-2	7.15	7671	-0.027	-0.026	0.009	0.016	0.000000	0.000000	-754.98	-834.60
1	FID	ACIS-I-4	7.19	7674	-0.040	0.031	0.008	0.014	0.000000	0.000000	2159.05	1071.59
2	FID	ACIS-I-5	7.23	7674	-0.034	0.063	0.010	0.017	0.000000	0.000000	-1808.72	1069.55
3	GUIDE	352191936	7.59	15348	-0.095	-0.091	0.056	0.090	311.305213	31.774035	2059.48	2264.29
4	GUIDE	352203864	8.82	15340	0.036	0.006	0.067	0.108	311.163068	30.823718	-1081.46	840.09
5	GUIDE	352209360	9.11	15346	0.002	0.065	0.080	0.126	311.855819	30.404897	-1231.31	-1778.66
6	GUIDE	352197664	9.08	15338	-0.045	-0.068	0.069	0.112	311.546988	31.316812	1050.68	766.77
7	GUIDE	352205320	9.95	15330	0.099	0.091	0.103	0.168	311.962675	30.535273	-657.30	-1810.86

2.4 Star Slots

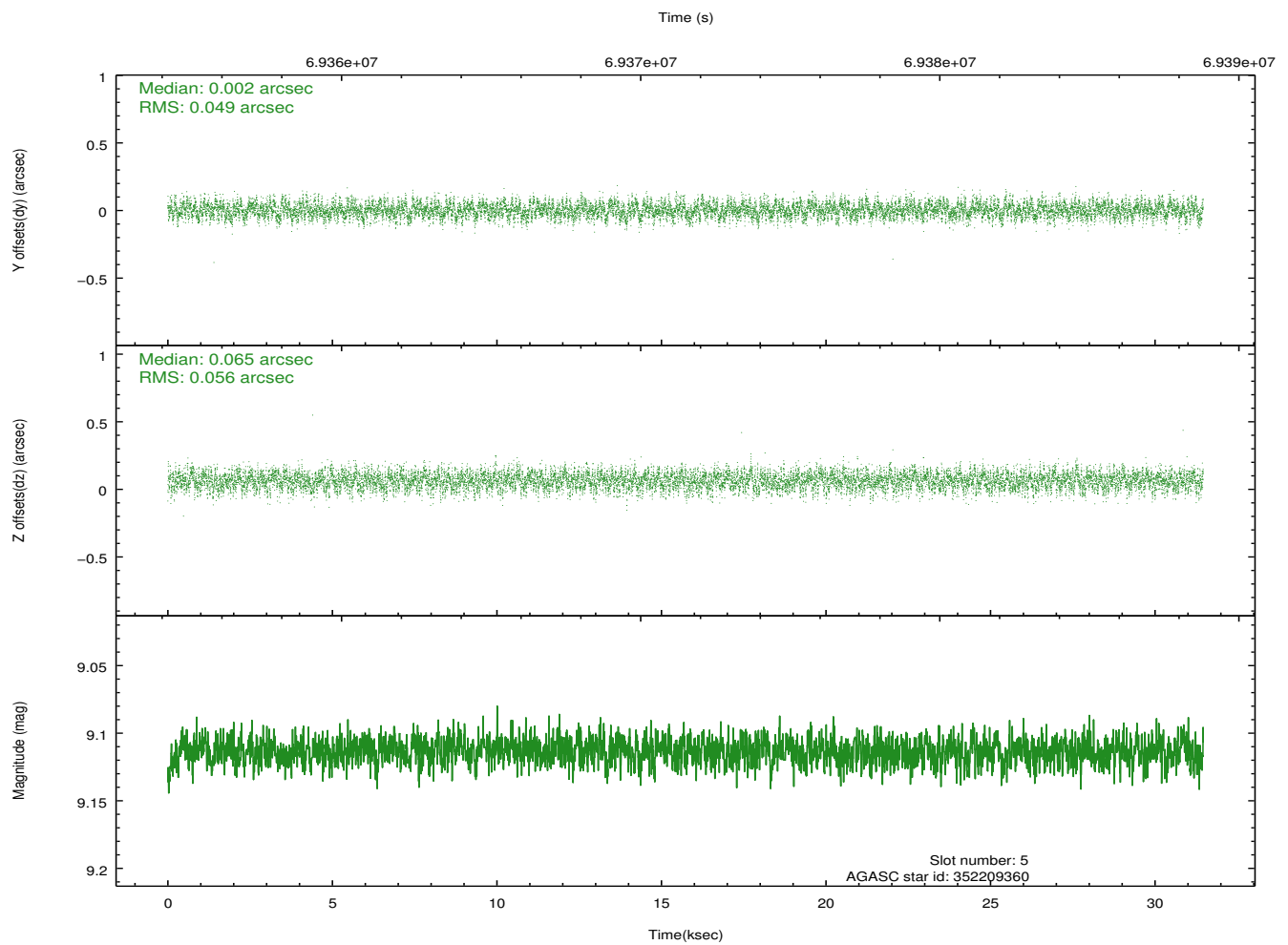
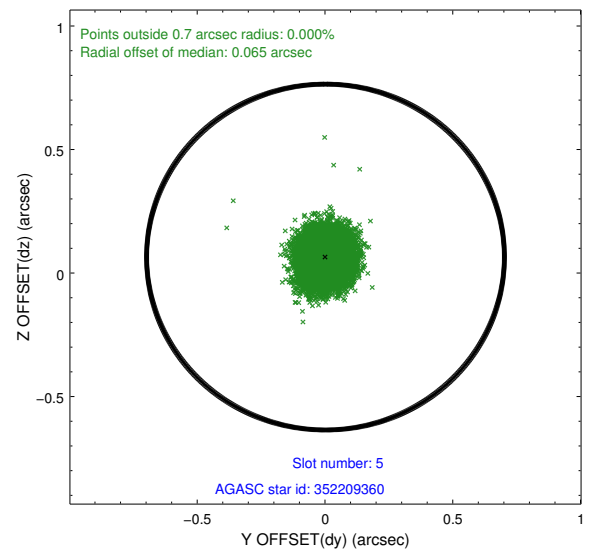
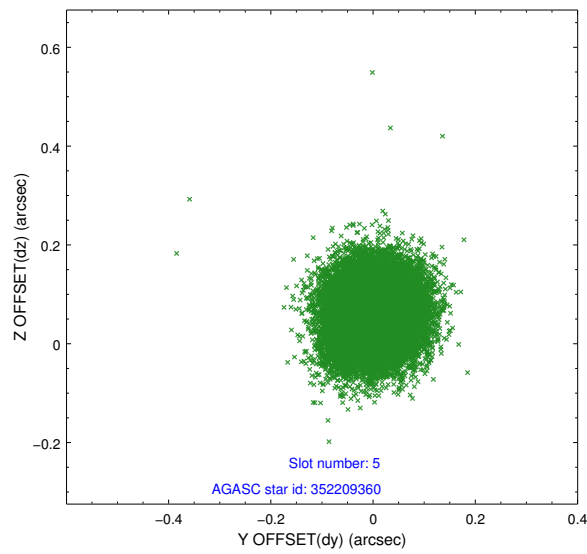
2.4.1 Slot 3



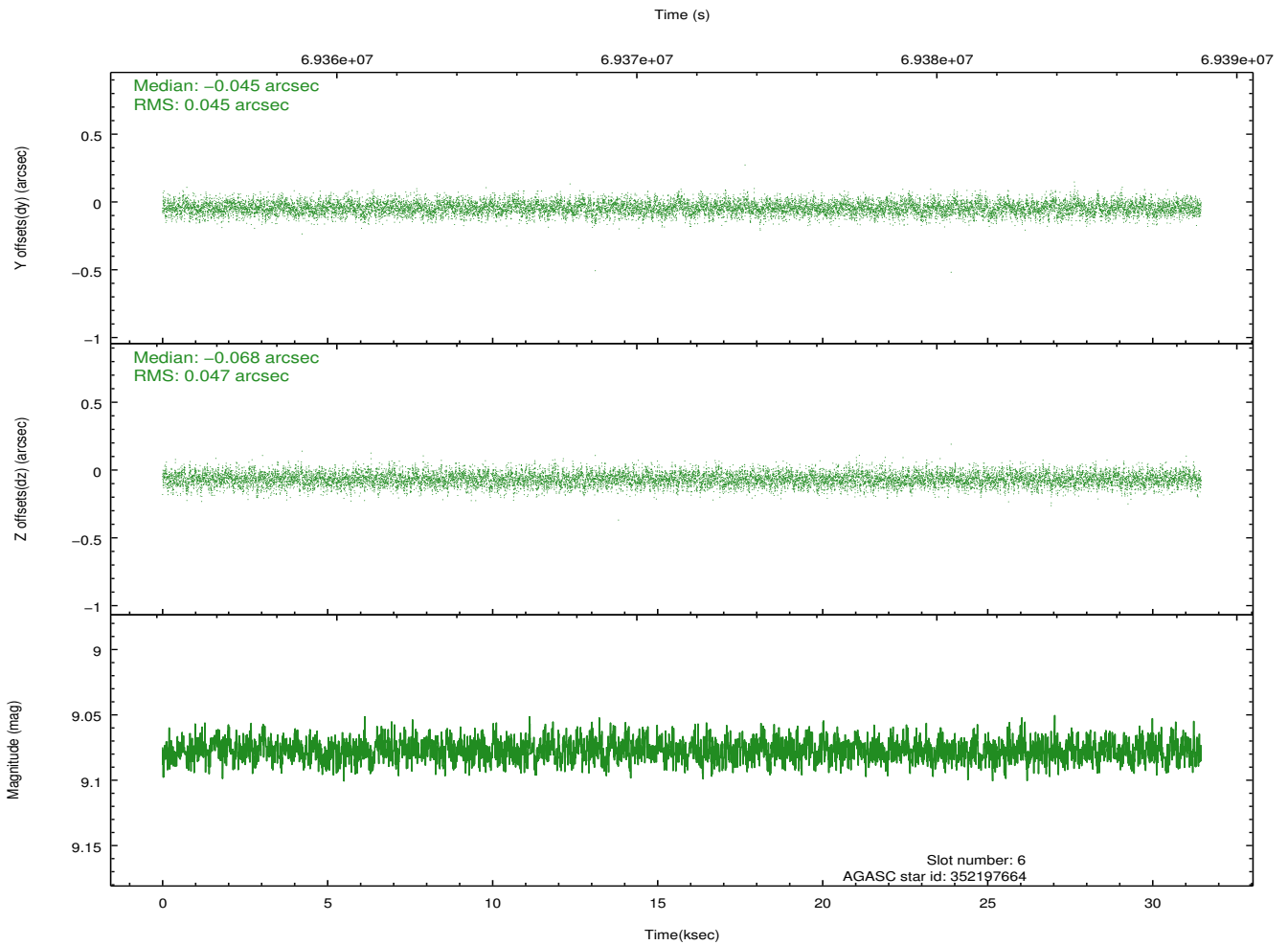
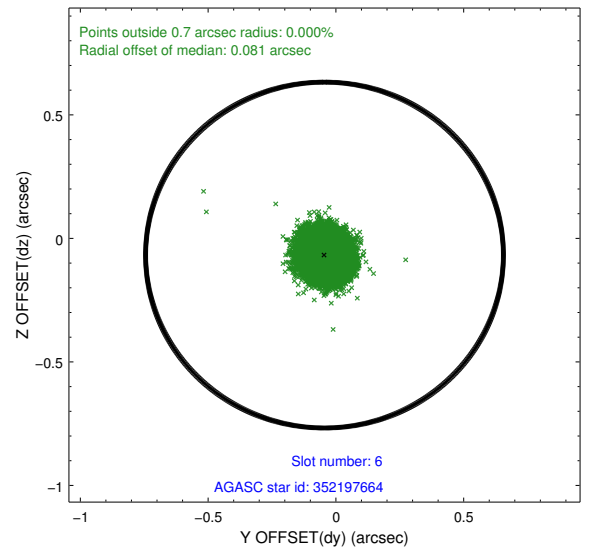
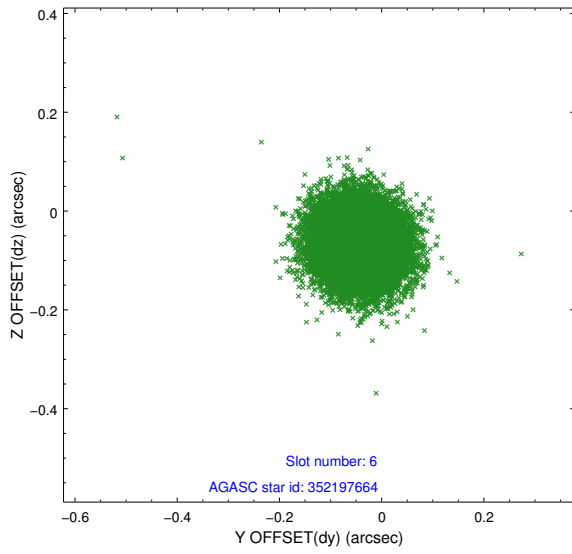
2.4.2 Slot 4



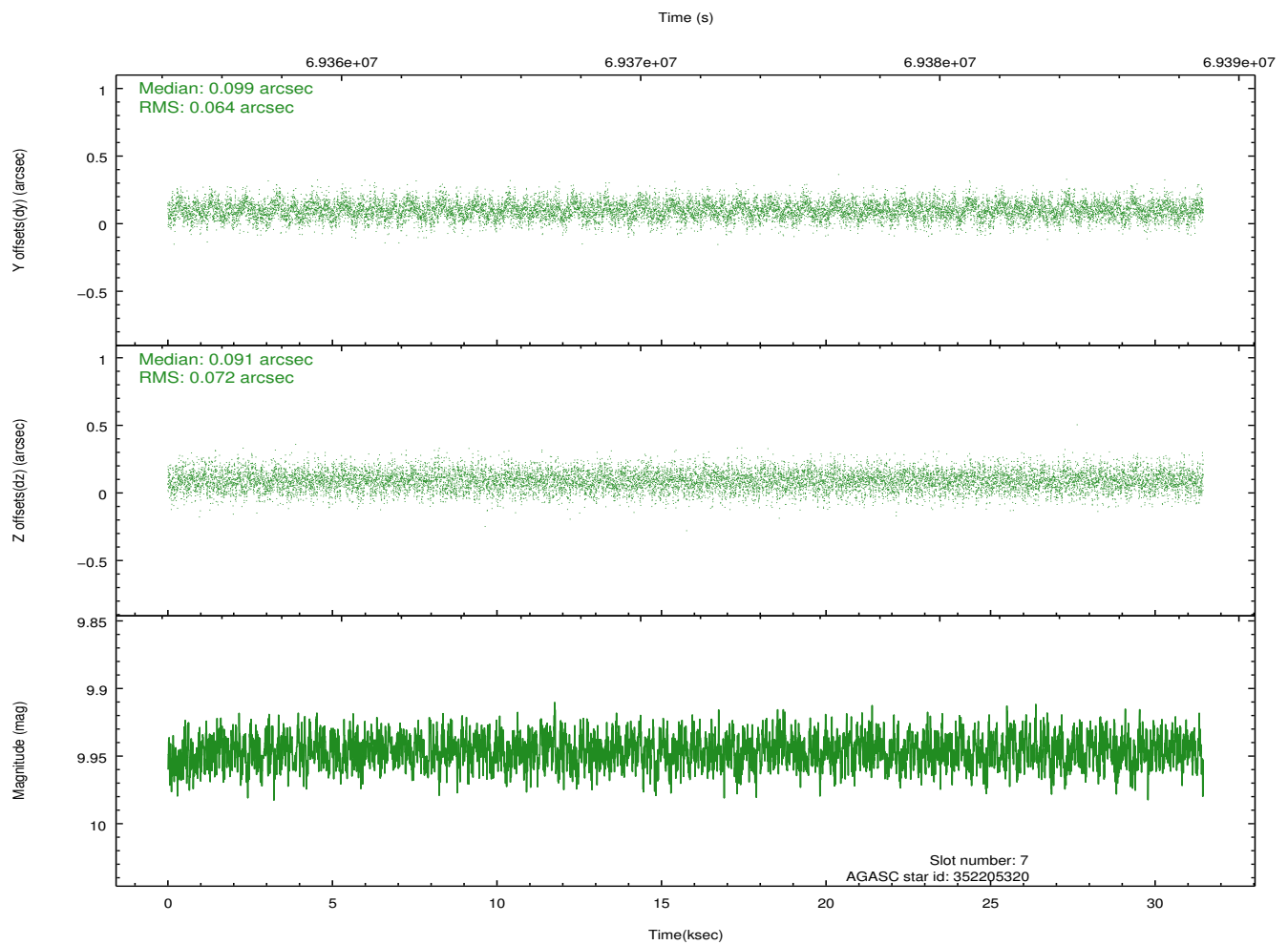
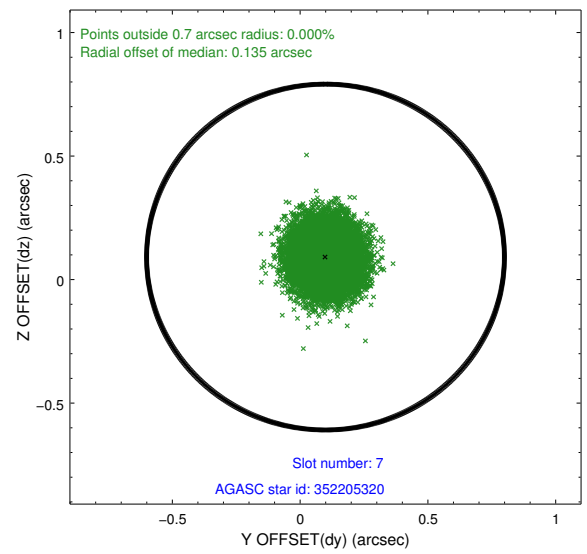
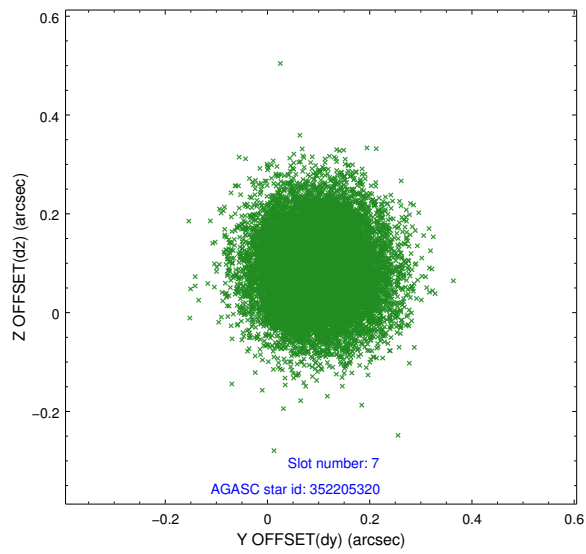
2.4.3 Slot 5



2.4.4 Slot 6

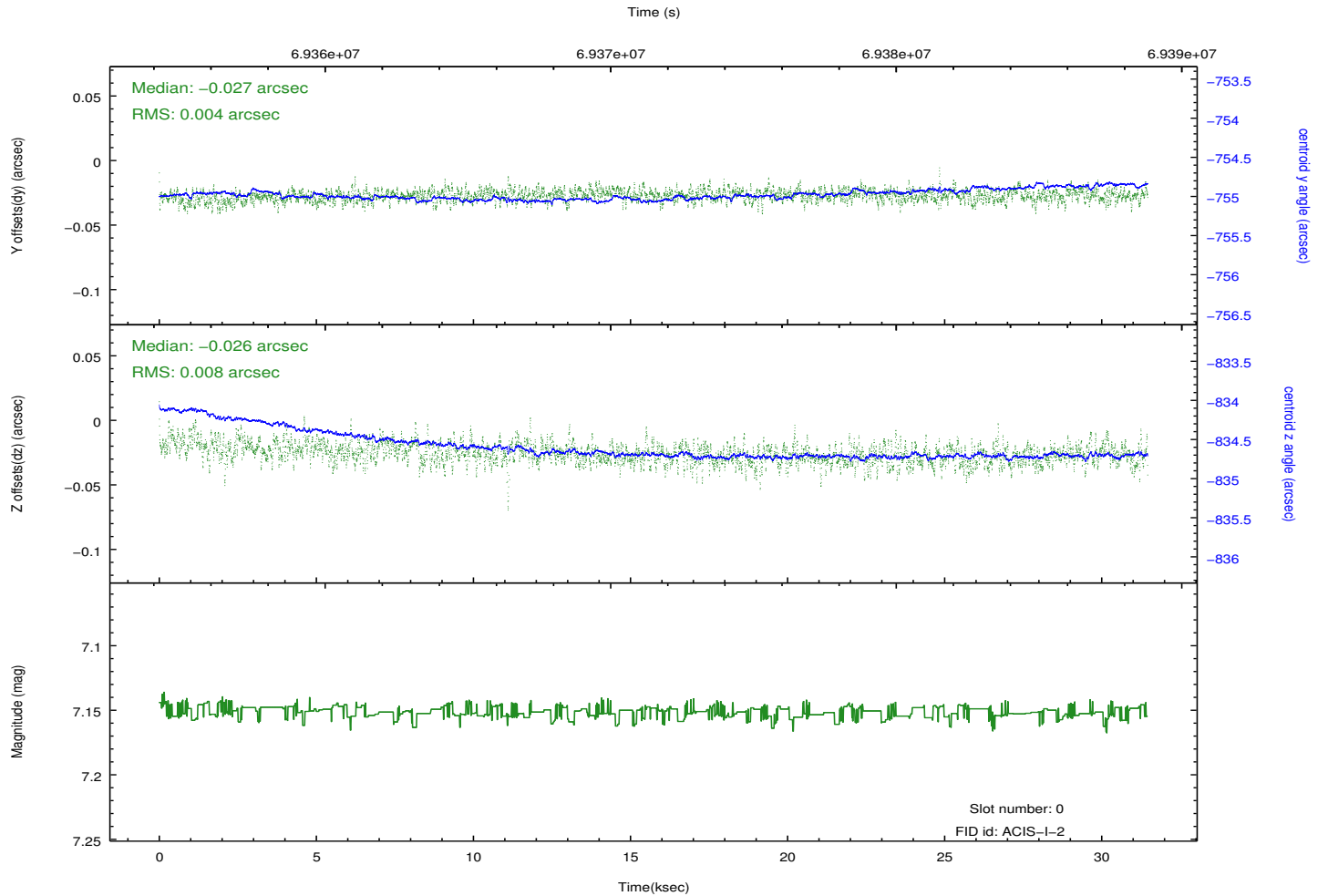
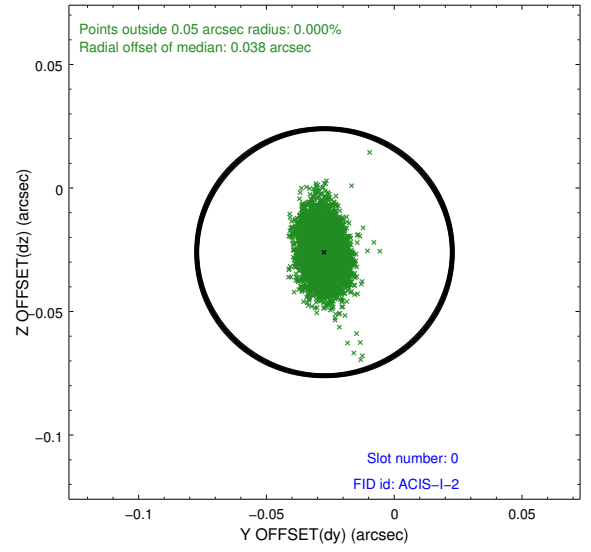
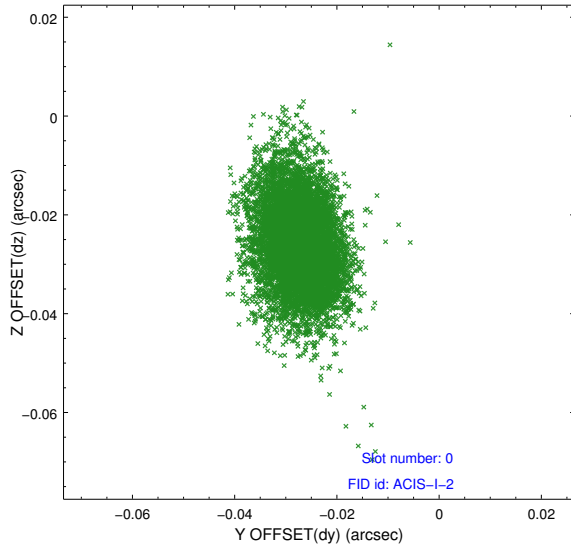


2.4.5 Slot 7

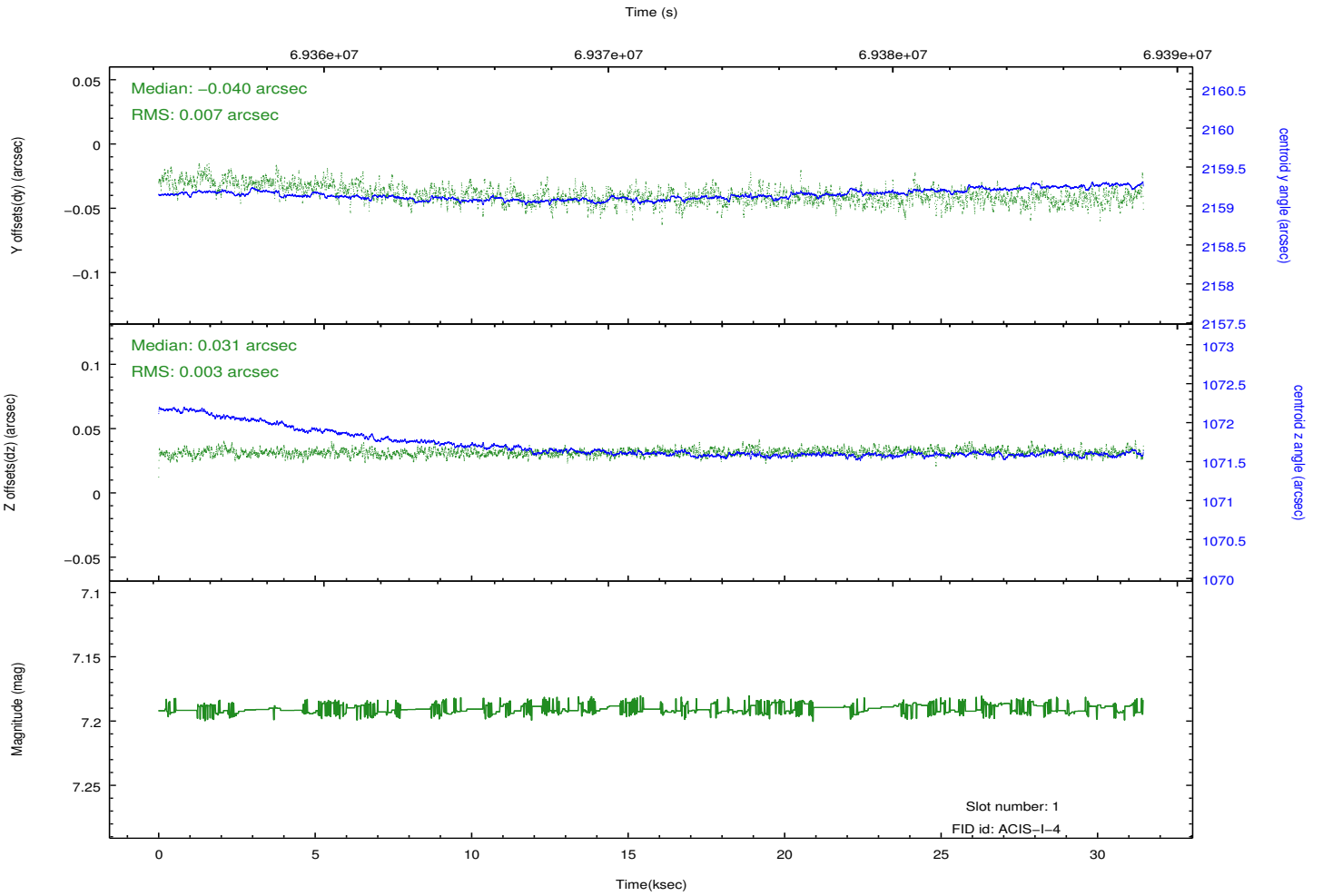
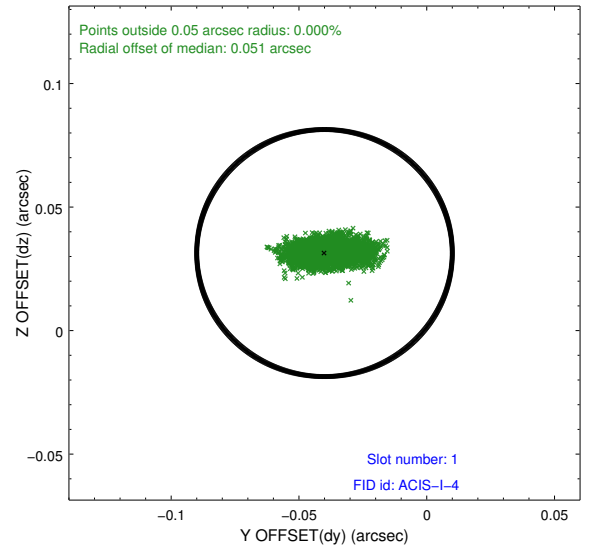
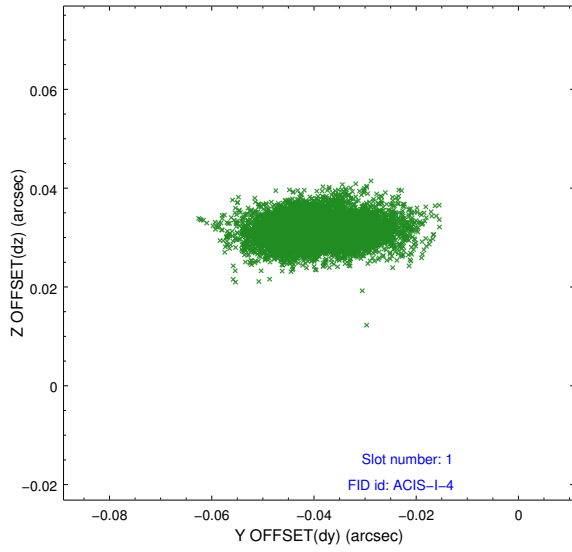


2.5 FID Slots

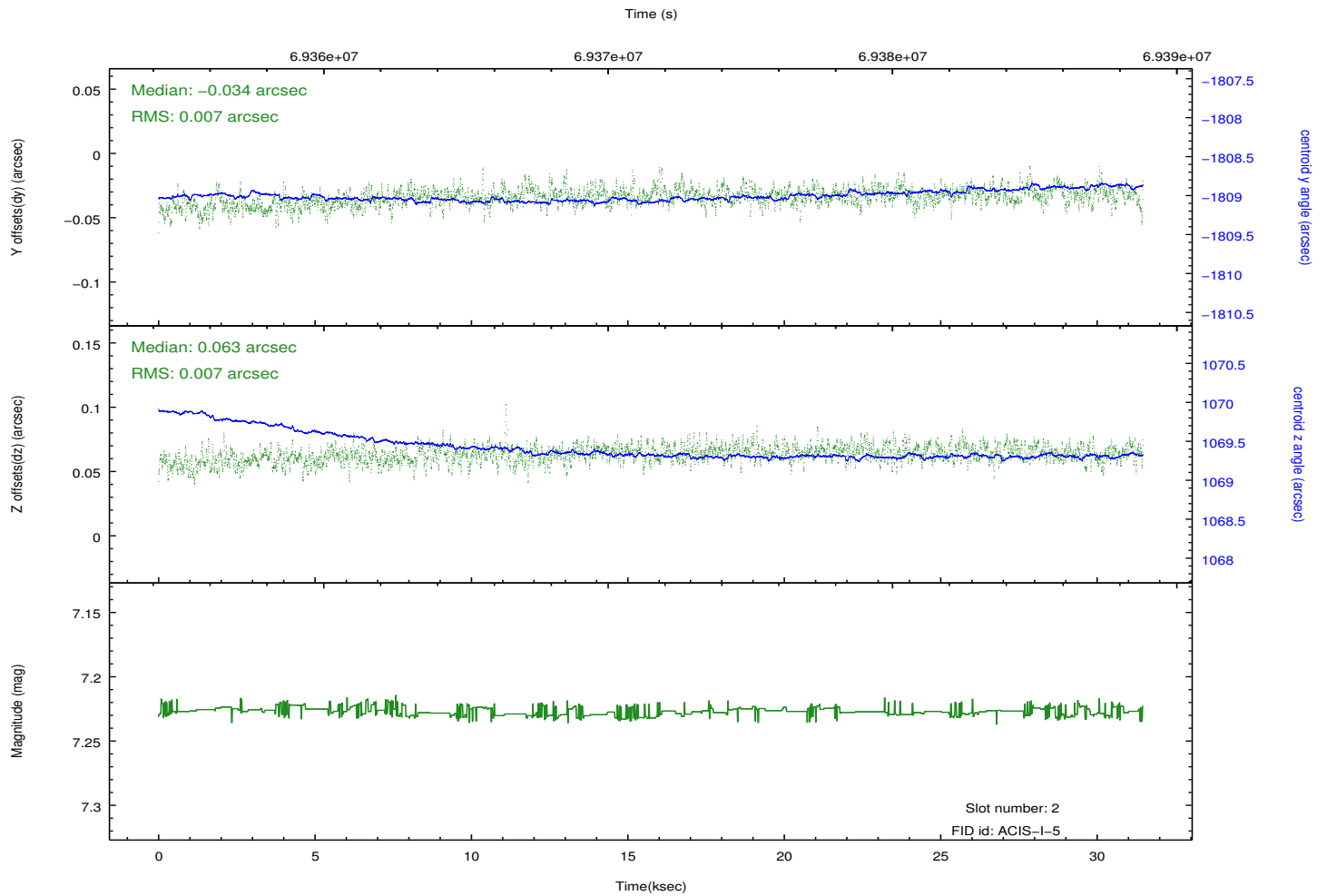
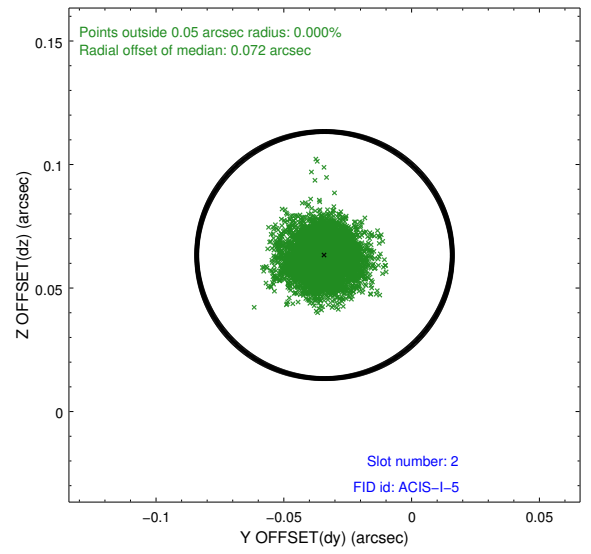
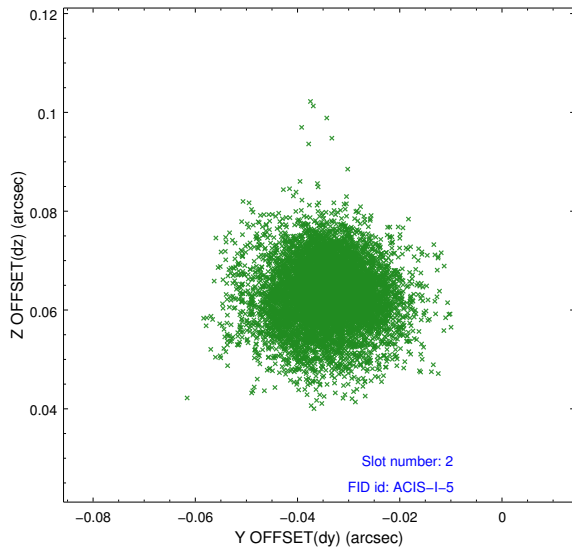
2.5.1 Slot 0



2.5.2 Slot 1



2.5.3 Slot 2



A Summary

A.1 Status

V&V Scientist	Jen Lauer
V&V Date (YYYY-MM-DD)	2012.08.27
V&V Edition	1
V&V Disposition and Status	OK
V&V Charge Time	31.456

A.2 Comments

Roll constraint met.