

V&V Reference Report

L2 ASCDS Version : 8.4.4

Observation 7453 - L2 Version 2
Chandra X-Ray Center

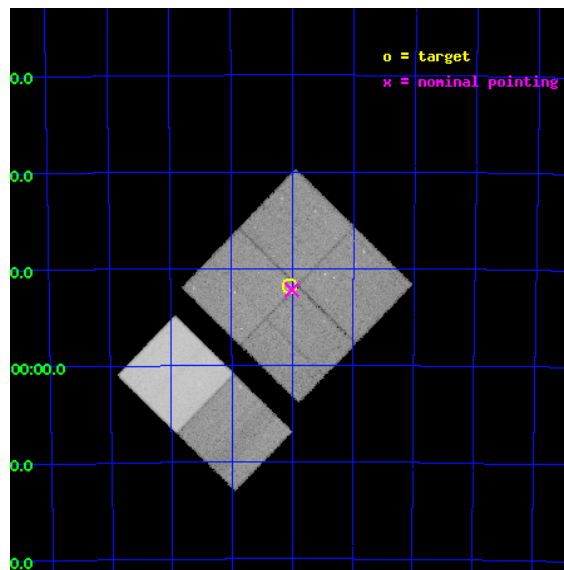
L2 Processing Date : Apr 26 2012

Contents

1	Front	2
2	OBI	3
2.1	OBI	3
2.1.1	Images	3
2.1.2	Bias	3
2.1.3	Parameters	4
2.1.4	Events	4
2.2	Compared Parameters	5
2.3	Aspect	6
2.4	Star Slots	9
2.4.1	Slot 3	9
2.4.2	Slot 4	10
2.4.3	Slot 5	11
2.4.4	Slot 6	12
2.4.5	Slot 7	13
2.5	FID Slots	14
2.5.1	Slot 0	14
2.5.2	Slot 1	15
2.5.3	Slot 2	16
A	Summary	17
A.1	Status	17
A.2	Comments	17

1 Front

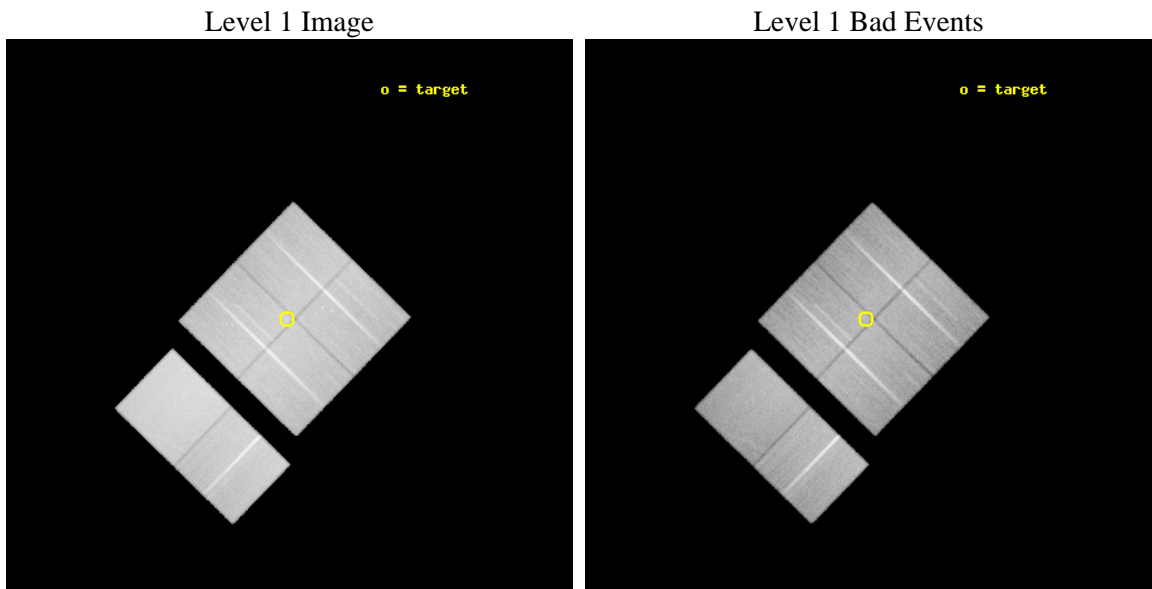
seq_num	300187	Sequence number
obs_id	7453	Observation id
title	Determining the population of Cataclysmic Variables in the Globular Cluster NGC2808	Proposal title
observer	Dr Remon Cornelisse	Principal investigator
object	NGC 2808	Source name
dtcycle	0	
cycle	P	events from which exps? Prim/Second/Both
ra_targ	138.010833	Observer's specified target RA [deg]
dec_targ	-64.862833	Observer's specified target Dec [deg]
ra_nom	138.00173792963	Nominal RA [deg]
dec_nom	-64.869928808707	Nominal Dec [deg]
roll_nom	224.20044908194	Nominal Roll [deg]
revision	2	Processing version of data
ontime	45941.040027559	Sum of GTIs [s]
livetime	45359.306916357	Livetime [s]
ontime0	45947.398768544	Sum of GTIs [s]
ontime1	45944.198868096	Sum of GTIs [s]
ontime2	45947.480878413	Sum of GTIs [s]
ontime3	45941.040027559	Sum of GTIs [s]
ontime6	45934.640007436	Sum of GTIs [s]
ontime7	45950.803948641	Sum of GTIs [s]
l2events	481092	Number of level 2 events



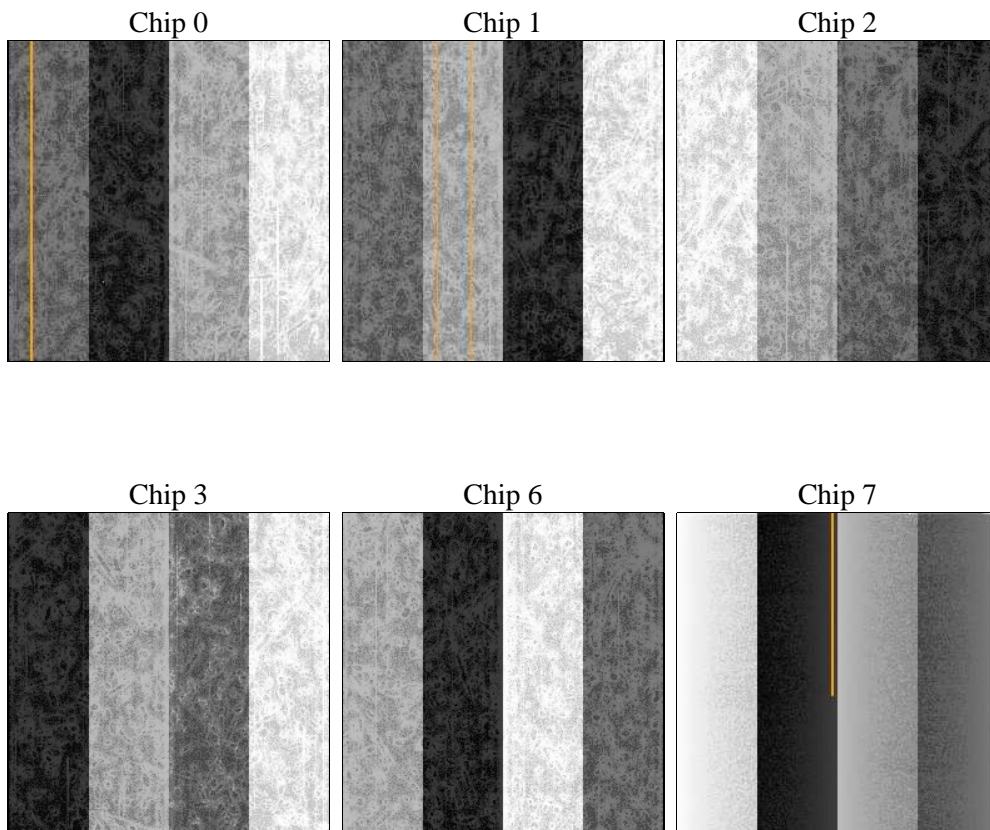
2 OBI

2.1 OBI

2.1.1 Images



2.1.2 Bias



2.1.3 Parameters

obi_num	0	Obi number	sched_exp_time	46000.000000	[s] Scheduled observation exposure time
ascdsver	8.4.4	Processing system revision	ontime	45941.040027559	Sum of GTIs [s]
caldbver	4.4.9	 	ontime0	45947.398768544	Sum of GTIs [s]
date	2012-04-26T14:33:22	Date and time of file creation	ontime1	45944.198868096	Sum of GTIs [s]
revision	2	Processing version of data	ontime2	45947.480878413	Sum of GTIs [s]
			ontime3	45941.040027559	Sum of GTIs [s]
			ontime6	45934.640007436	Sum of GTIs [s]
			ontime7	45950.803948641	Sum of GTIs [s]
			l1events	2803534	Number of level 1 events

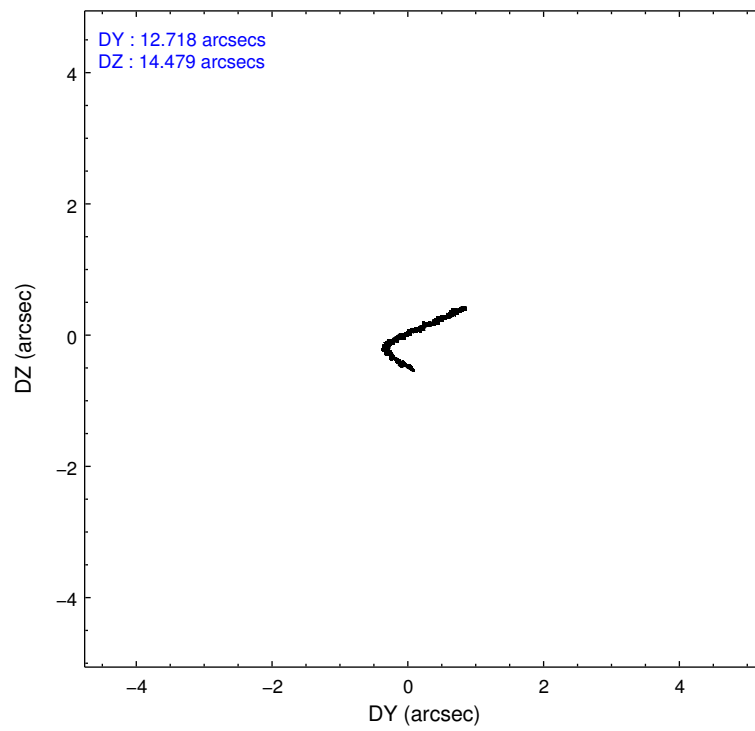
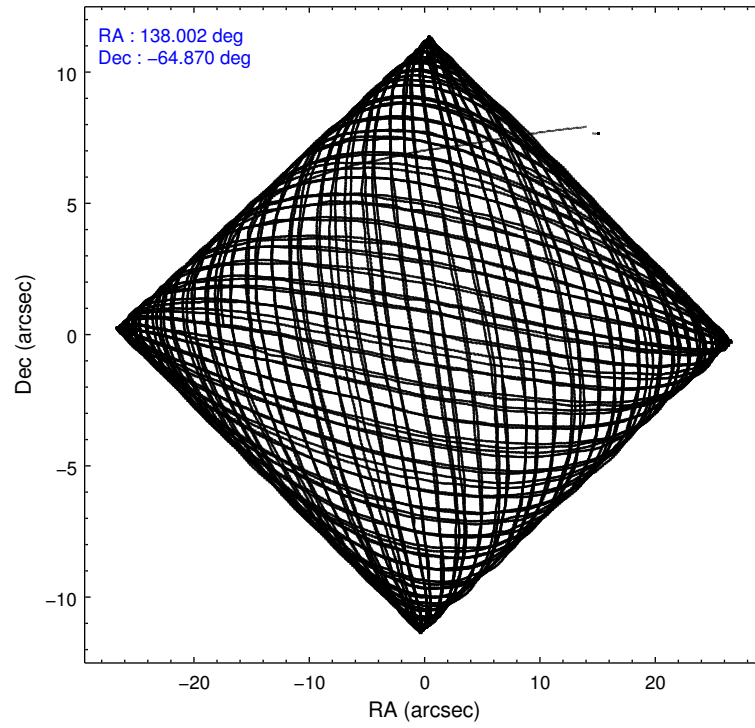
2.1.4 Events

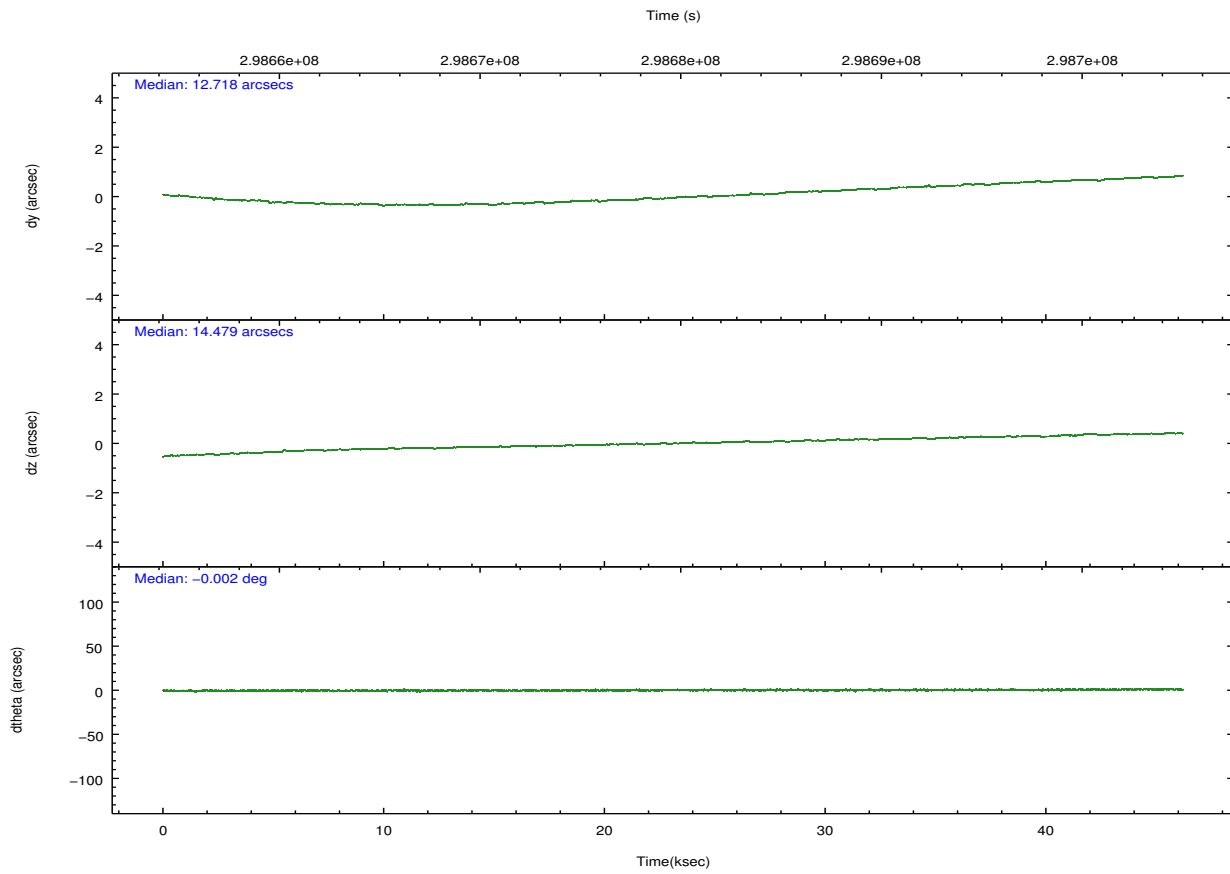
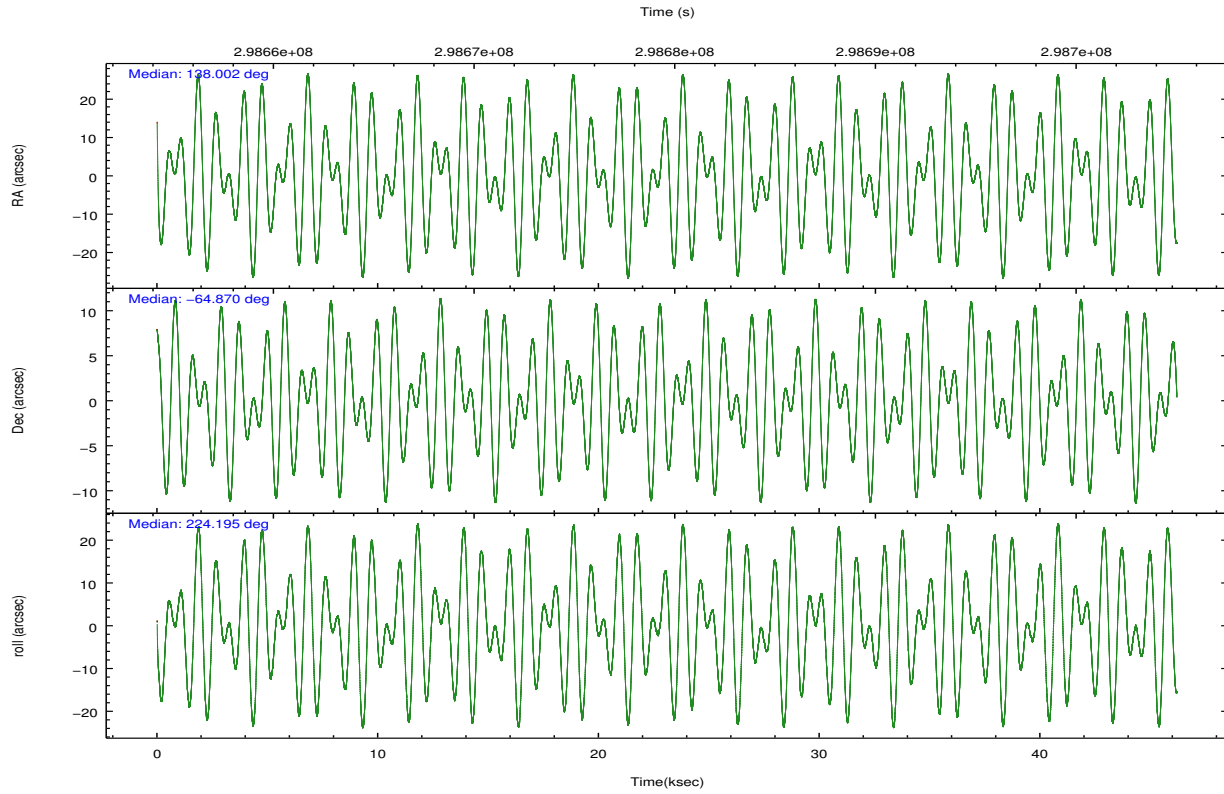
	ccd 0	ccd 1	ccd 2	ccd 3	ccd 6	ccd 7		ccd 0	ccd 1	ccd 2	ccd 3	ccd 6	ccd 7
level 1 events	414833	415061	446606	445366	470131	611537	grade 0 events	23384	21400	22967	23678	20200	21400
rejected events	359947	358557	394616	391601	416416	358453		5%	5%	5%	5%	4%	3%
rejected %	86%	86%	88%	87%	88%	58%	grade 1 events	270	198	296	307	252	685
								0%	0%	0%	0%	0%	0%
							grade 2 events	12116	13200	10895	10594	12362	51495
								2%	3%	2%	2%	2%	8%
							grade 3 events	5112	5266	4773	5025	5006	21583
								1%	1%	1%	1%	1%	3%
							grade 4 events	4887	5290	4803	5103	5025	21289
								1%	1%	1%	1%	1%	3%
							grade 5 events	17793	18920	17216	20131	20881	57399
								4%	4%	3%	4%	4%	9%
							grade 6 events	9390	11355	8557	9370	11124	137333
								2%	2%	1%	2%	2%	22%
							grade 7 events	341881	339432	377099	371158	395281	300353
								82%	81%	84%	83%	84%	49%

2.2 Compared Parameters

Parameter	Planned	Actual	Parameter	Planned	Actual
Instrument	ACIS	ACIS	Obspar format version number	7	7
Detector	ACIS-012367	ACIS-012367	Obspar file type	PREDICTED	ACTUAL
Grating	NONE	NONE	Obspar update status	NONE	UPDATED
Data mode	FAINT	FAINT	Number of optional ACIS chips dropped	0	0
Observation mode	POINTING	POINTING	On-chip summing requested	N	N
[deg] Pointing RA	138.019101	138.0017379296323	Subarray requested	NONE	NONE
[deg] Pointing Dec	-64.843435	-64.86992880870733	Alternating exposures requested	N	N
[deg] Pointing Roll	224.007486	224.2004490819434	[s] Primary exposure time	0.000000	3.2
[mm] SIM focus pos	-0.782348	-0.7809083437167272			
[mm] SIM defocus	0	0.001439871863259334			
[mm] SIM translation stage pos	-233.592463	-233.5874344608287			
[mm] SIM translation stage offset	0	-0.005018542100998502			
[s] Observation start time (MET)	298656722.184000	298655753.54045			
Observation start date	2007-06-19T16:10:57	2007-06-19T15:55:53			
[s] Observation end time (MET)	298702722.184000	298703292.53022			
Observation end date	2007-06-20T04:57:37	2007-06-20T05:08:12			
Read mode	TIMED	TIMED			

2.3 Aspect



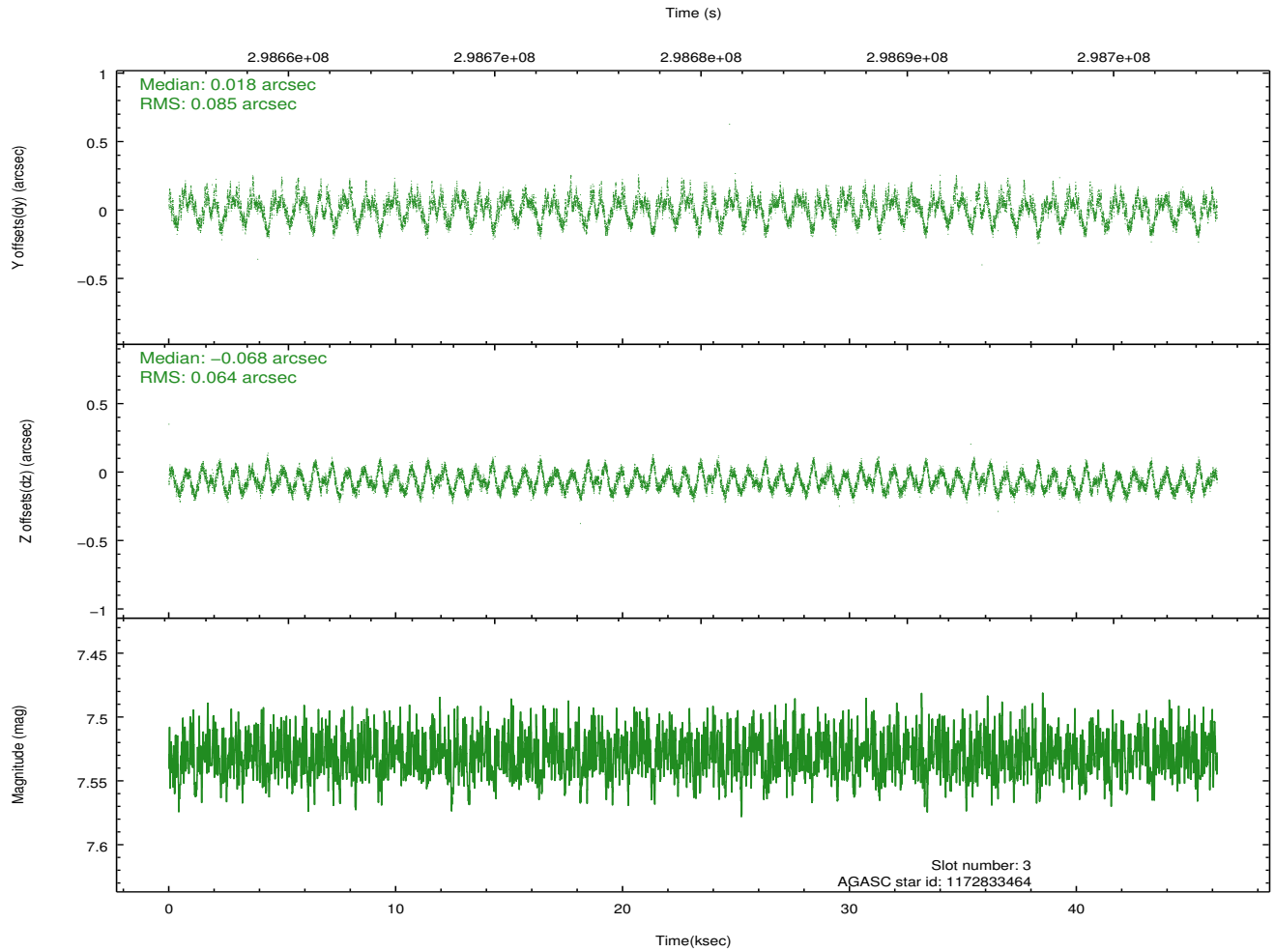
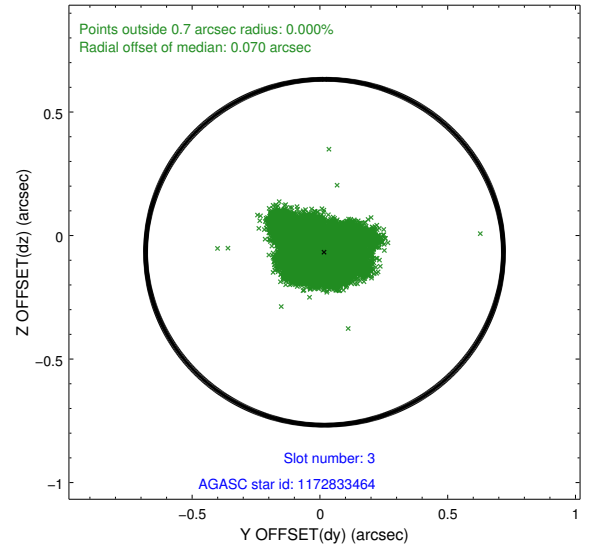
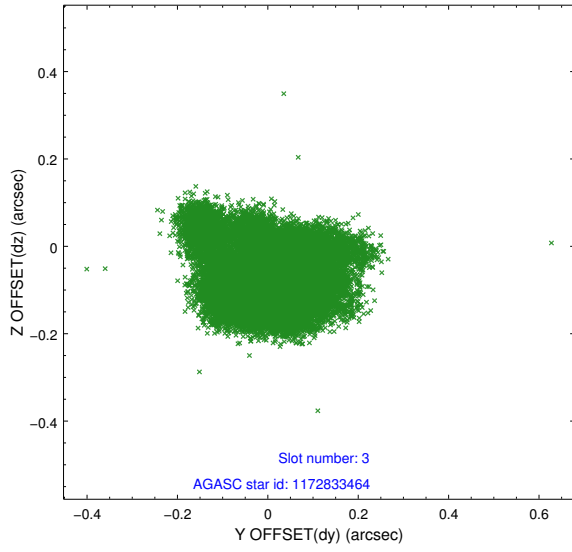


Slot Statistics

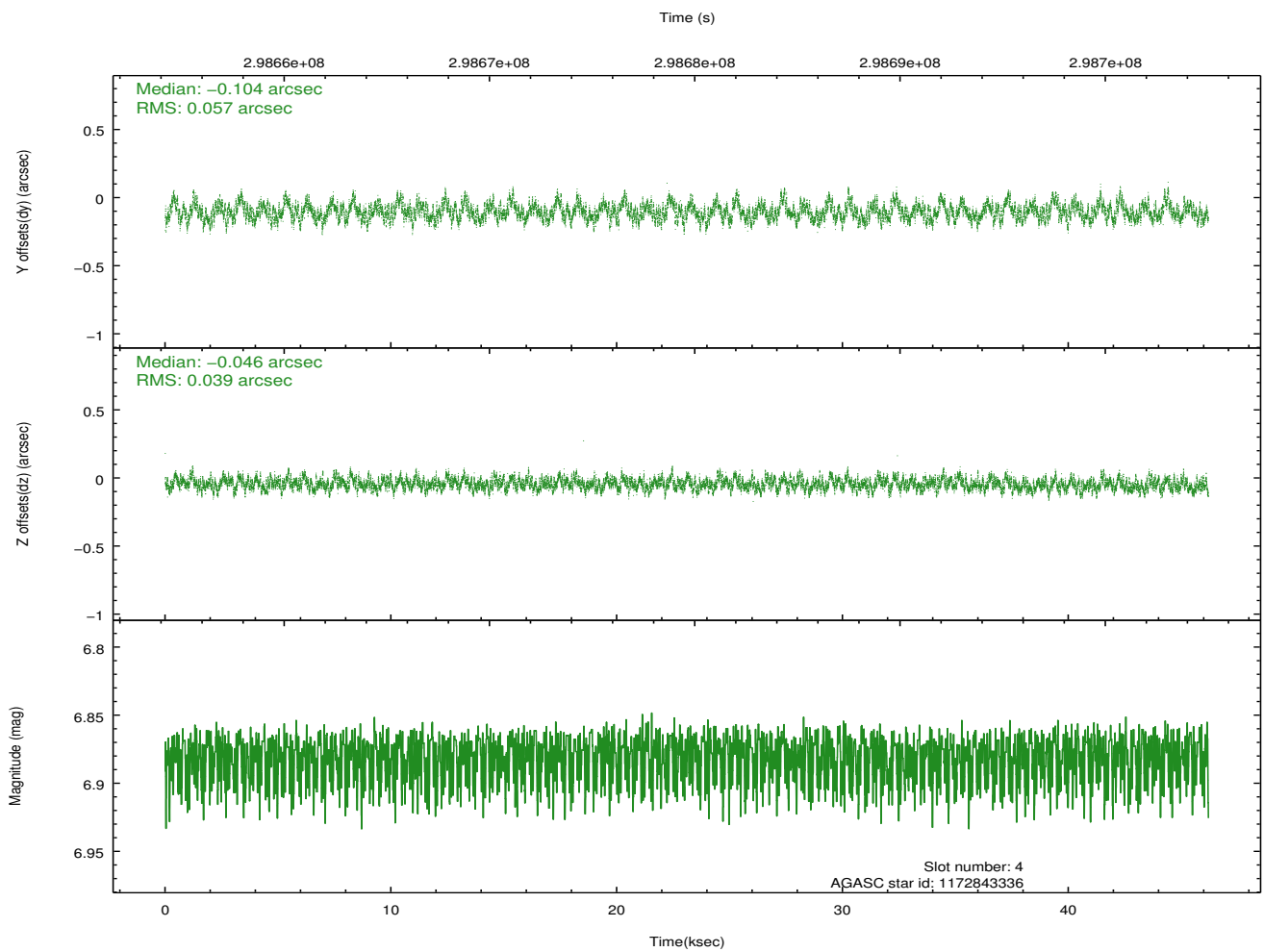
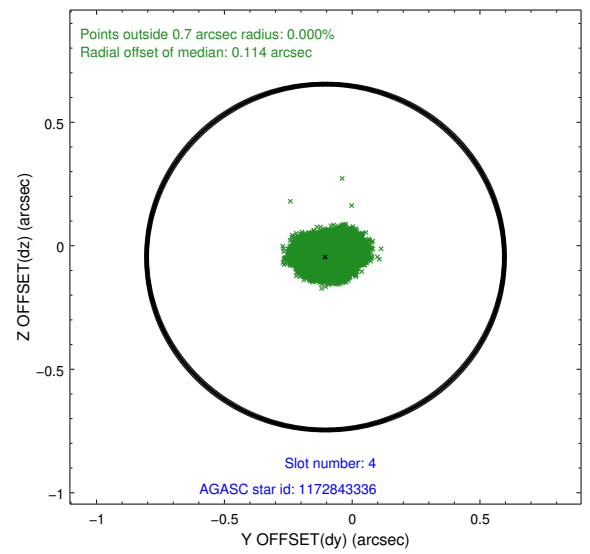
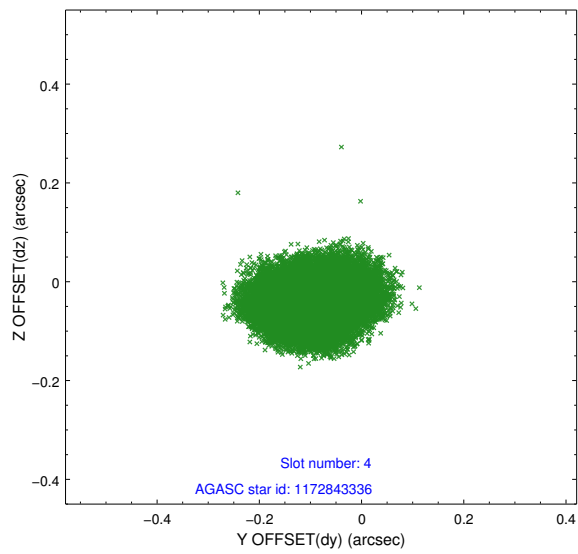
slot	status	id	mag	n_pts	med_dy	med_dz	dr1	dr2	ra	dec	mean_y	mean_z
0	FID	ACIS-I-1	7.23	11268	0.033	-0.006	0.012	0.020	0.000000	0.000000	926.75	-838.06
1	FID	ACIS-I-5	7.22	11268	-0.211	0.037	0.009	0.018	0.000000	0.000000	-1821.62	1059.46
2	FID	ACIS-I-6	7.23	11268	0.088	0.040	0.011	0.019	0.000000	0.000000	392.34	1703.97
3	GUIDE	1172833464	7.53	22534	0.018	-0.068	0.113	0.190	137.532282	-65.489504	2140.67	1169.57
4	GUIDE	1172843336	6.88	22533	-0.104	-0.046	0.073	0.119	138.594730	-65.053954	-99.20	1155.08
5	GUIDE	1171148976	9.32	22514	0.104	-0.029	0.099	0.164	136.019328	-64.735751	1974.52	-2377.91
6	GUIDE	1172833280	9.02	22514	0.045	0.134	0.080	0.129	138.500210	-64.197191	-2156.22	-1147.61
7	GUIDE	1172838424	9.67	22458	-0.051	0.005	0.094	0.152	137.580666	-65.505266	2127.48	1260.99

2.4 Star Slots

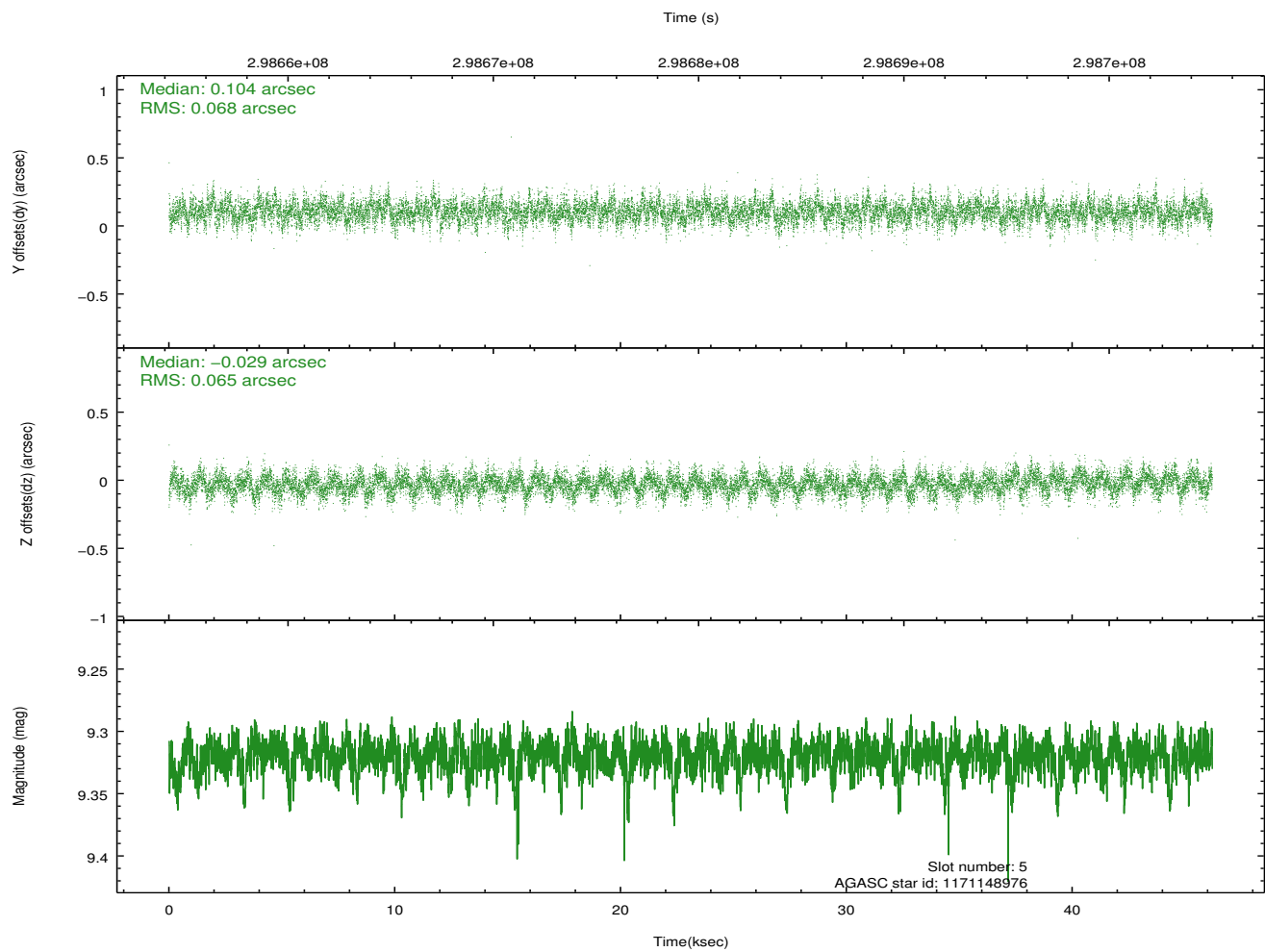
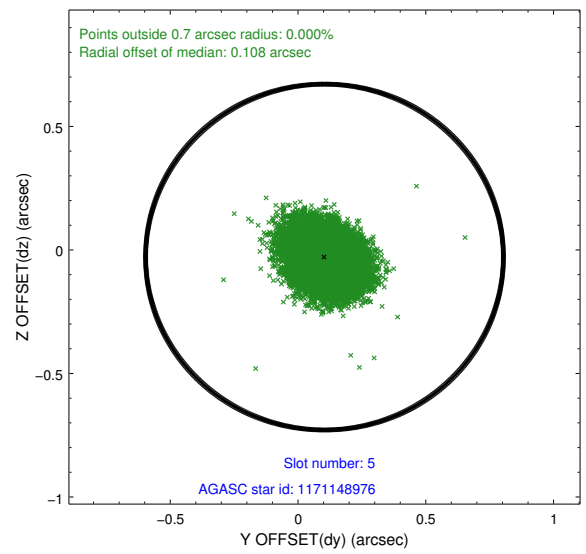
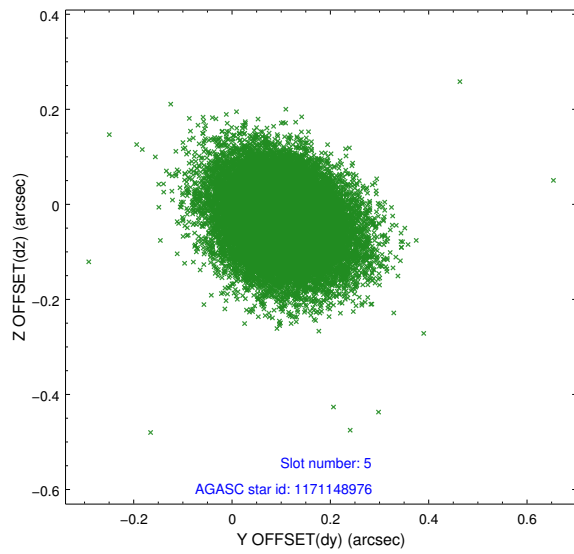
2.4.1 Slot 3



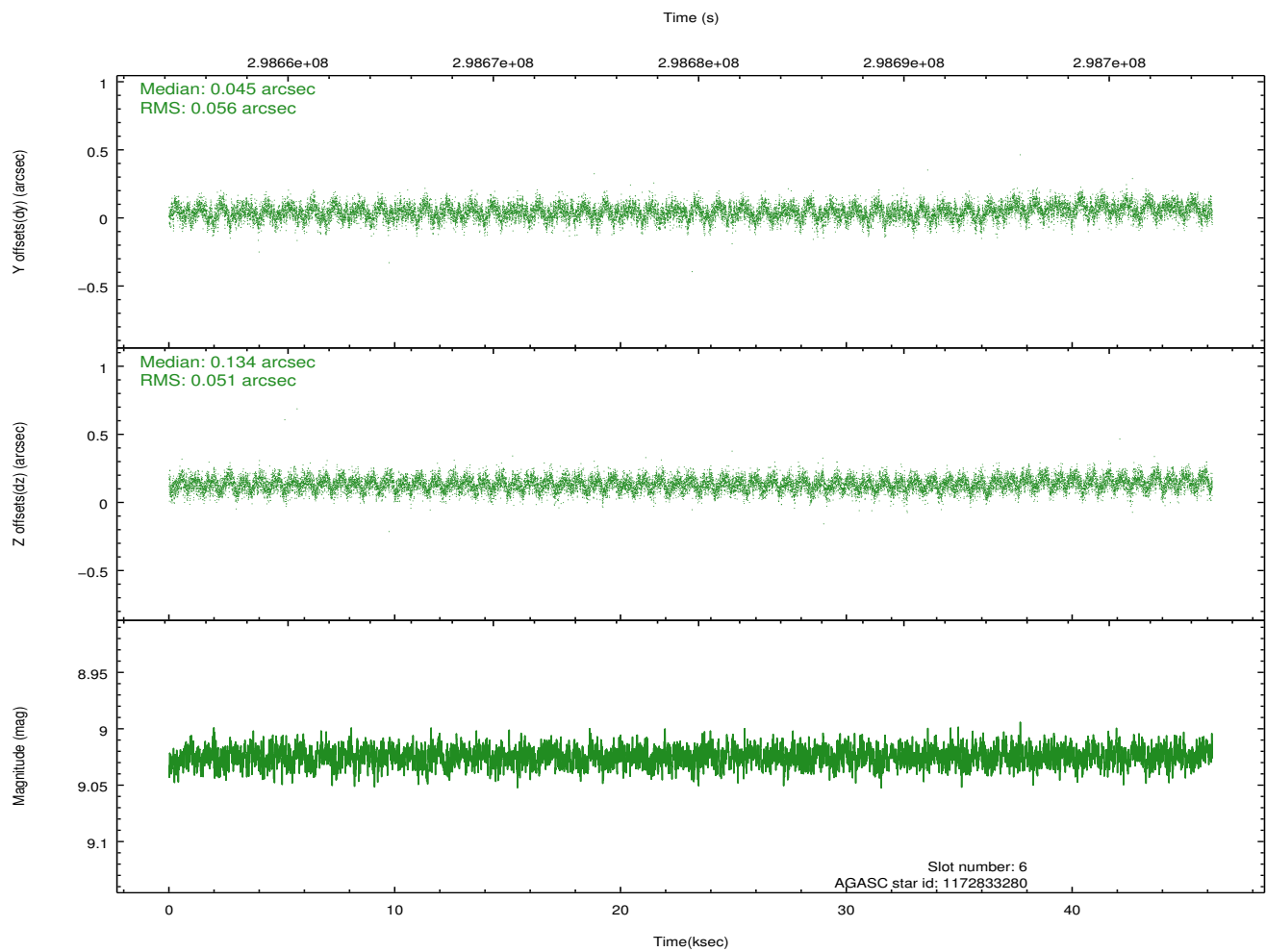
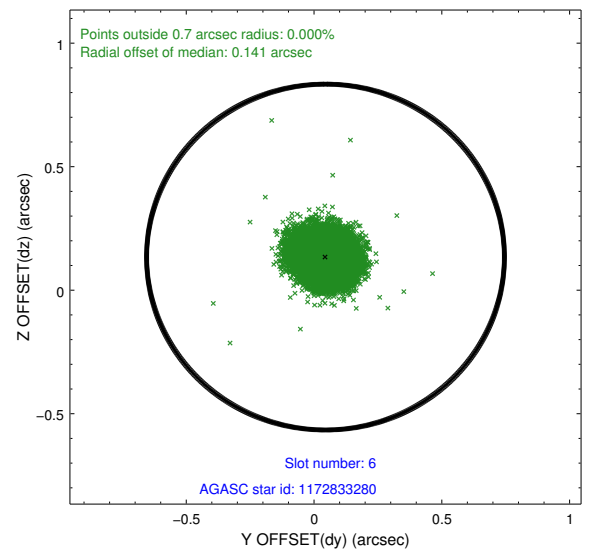
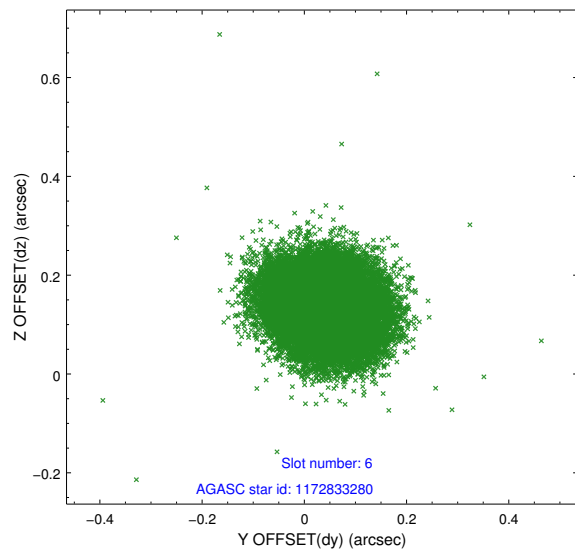
2.4.2 Slot 4



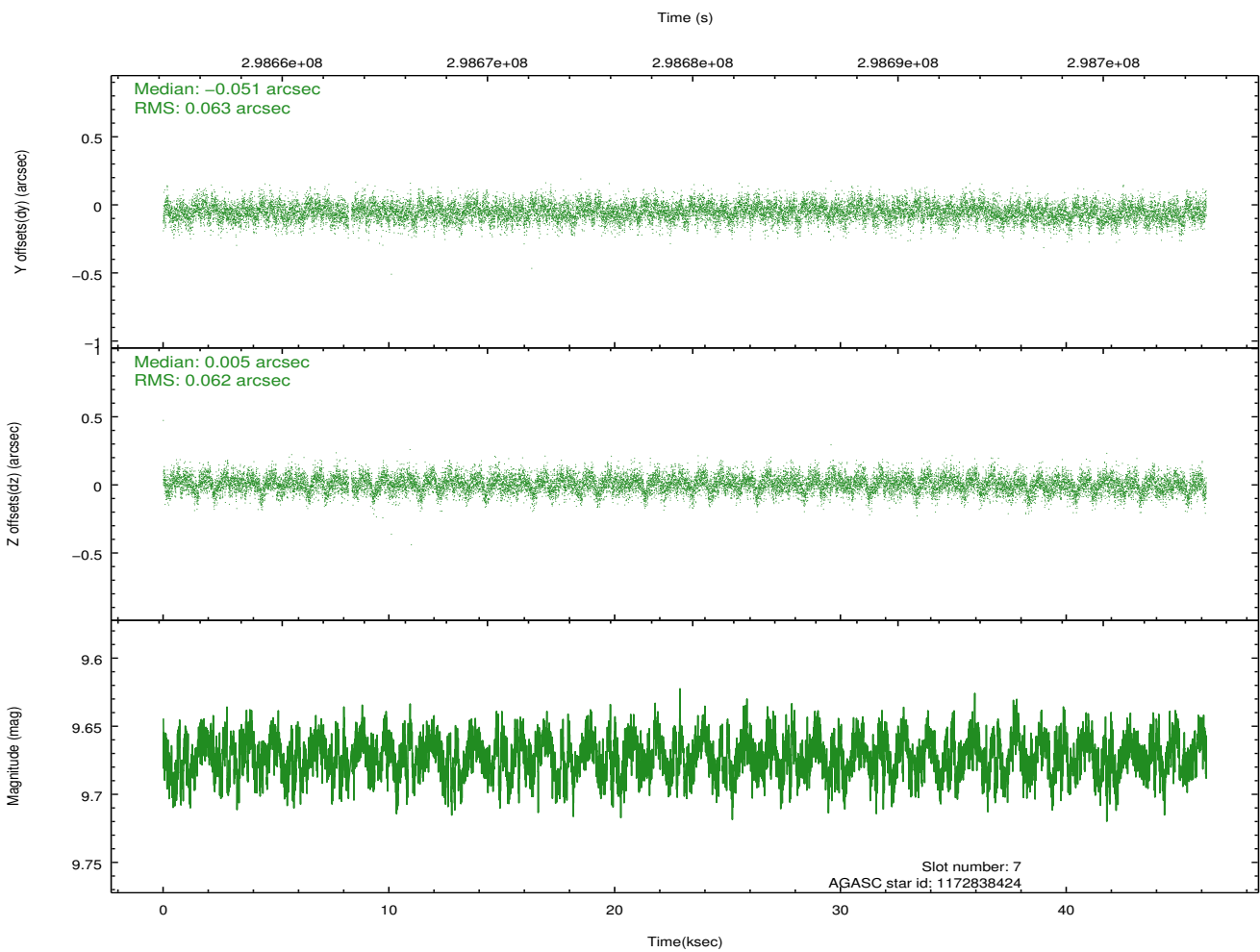
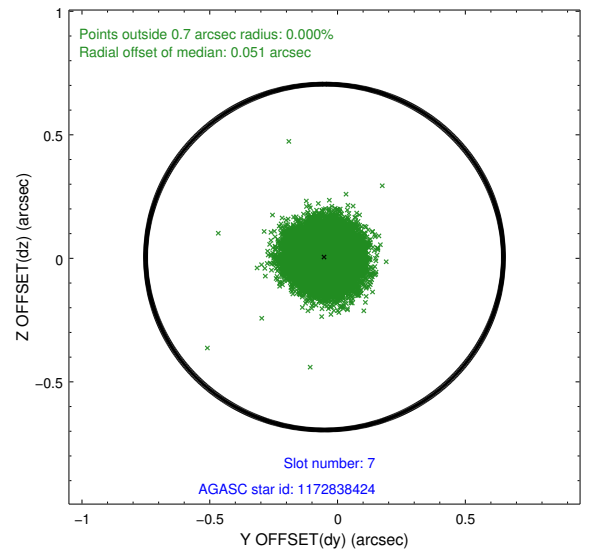
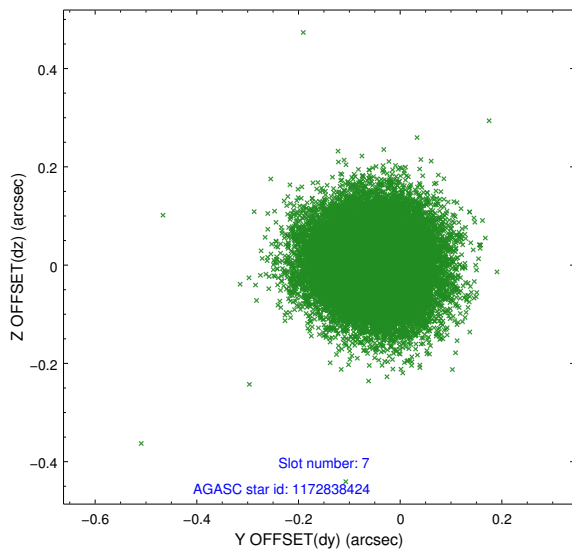
2.4.3 Slot 5



2.4.4 Slot 6

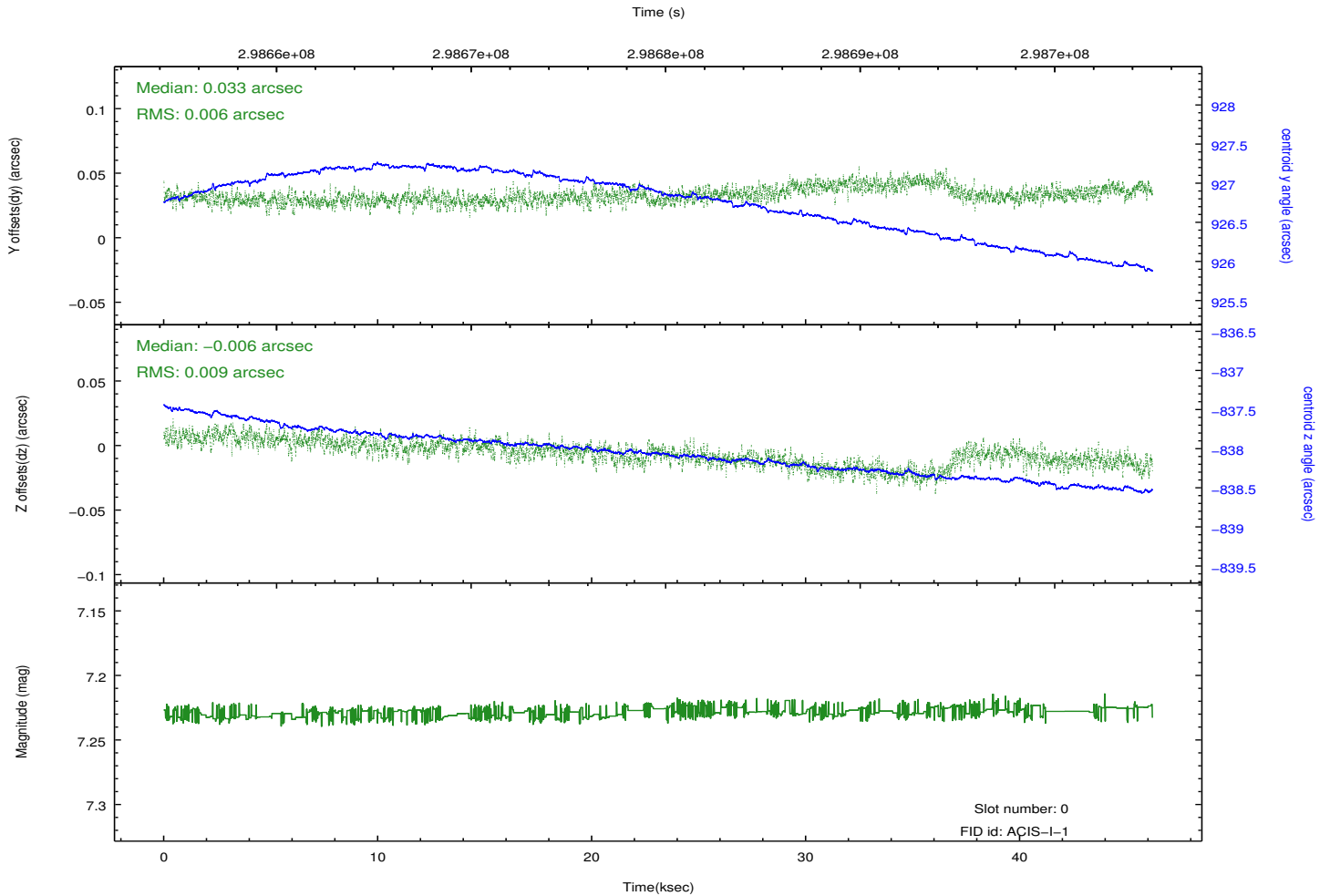
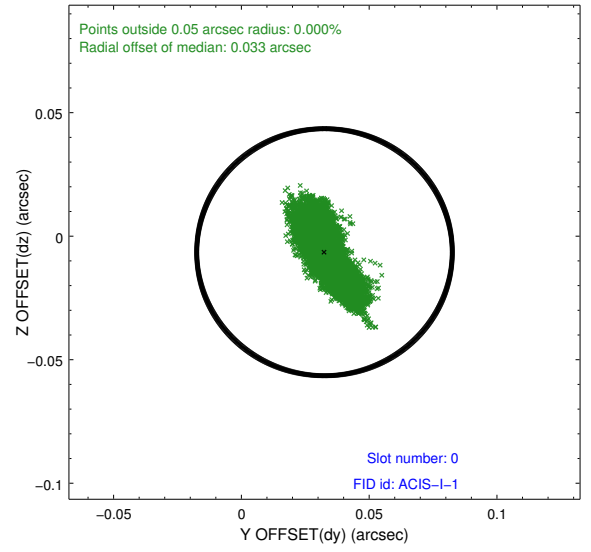
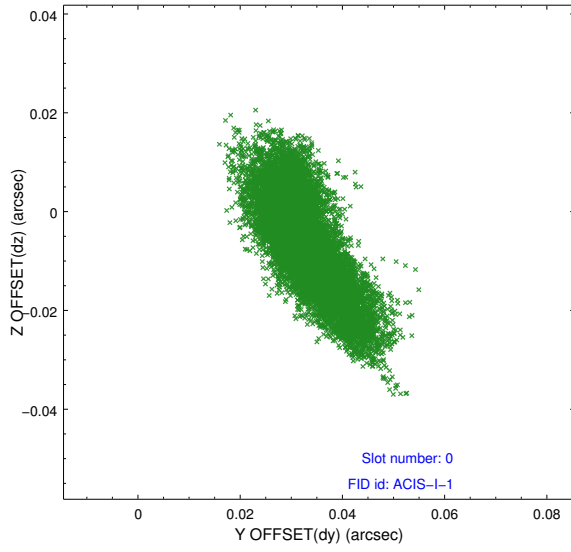


2.4.5 Slot 7

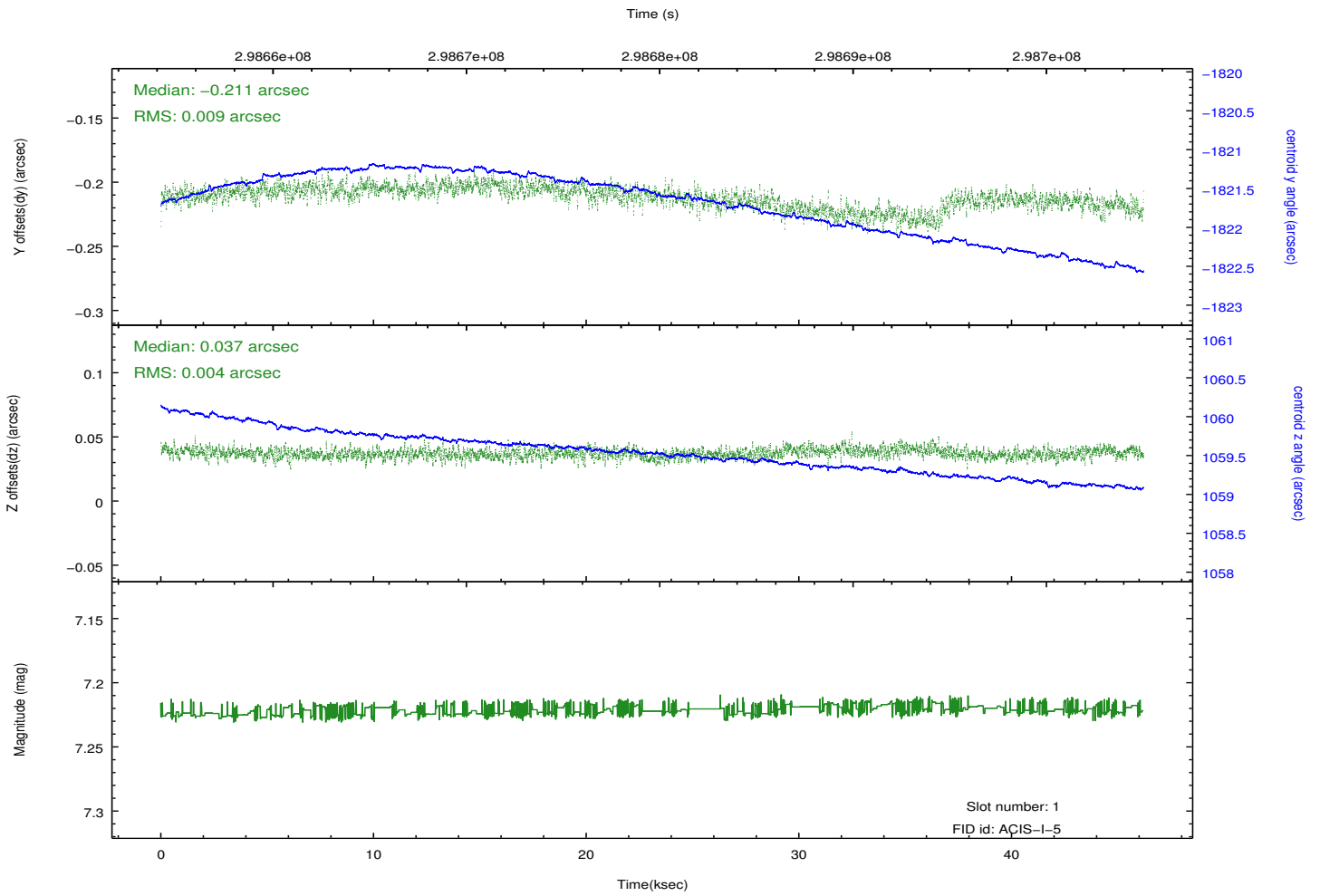
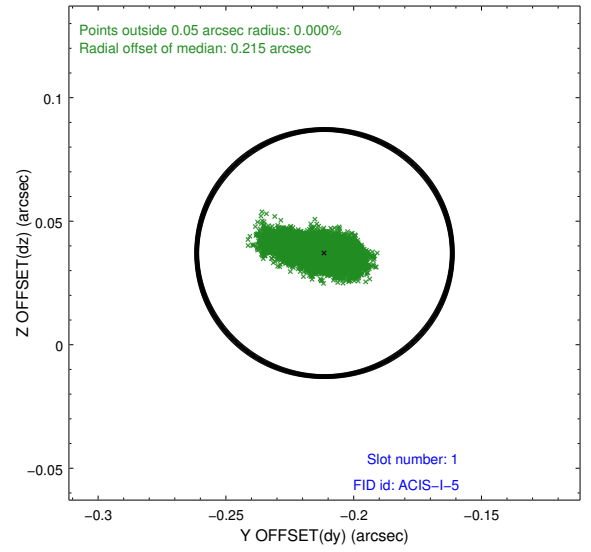
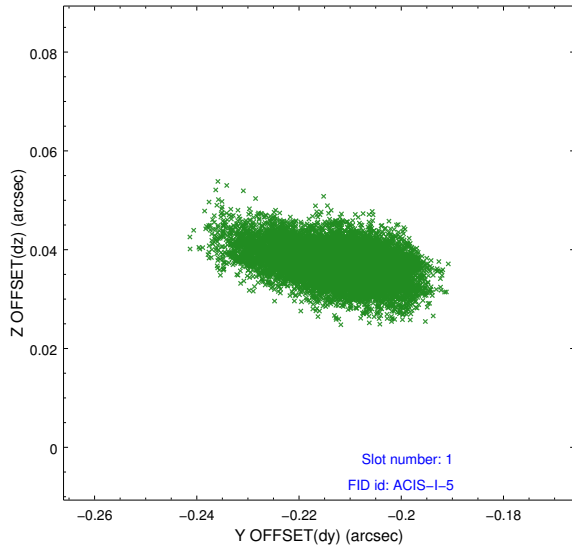


2.5 FID Slots

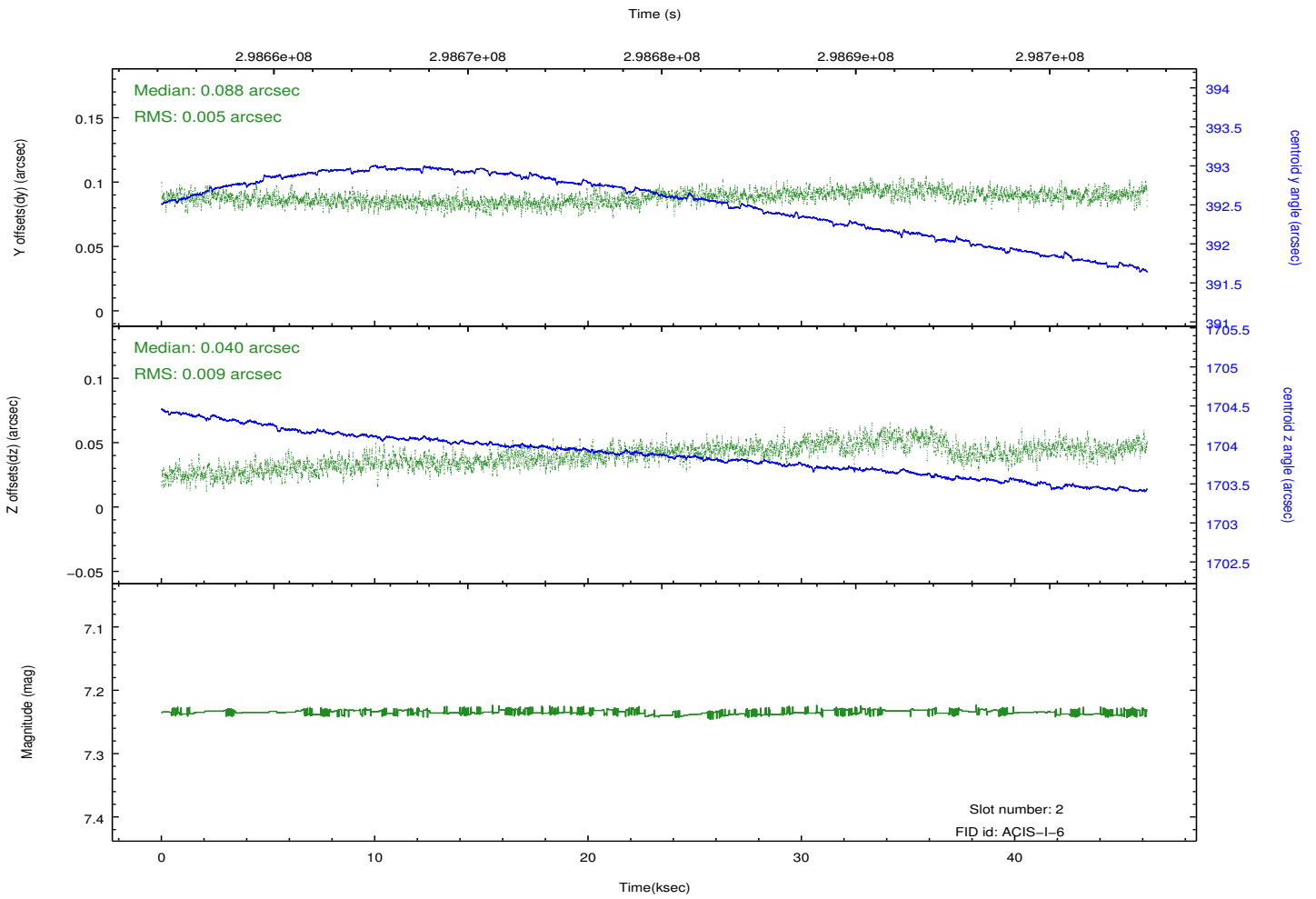
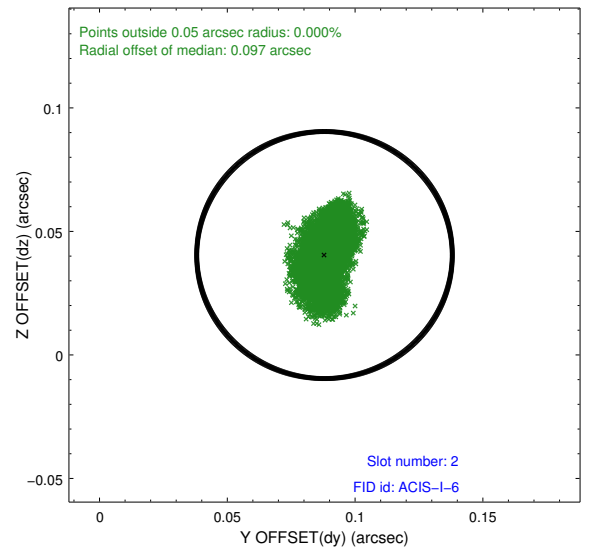
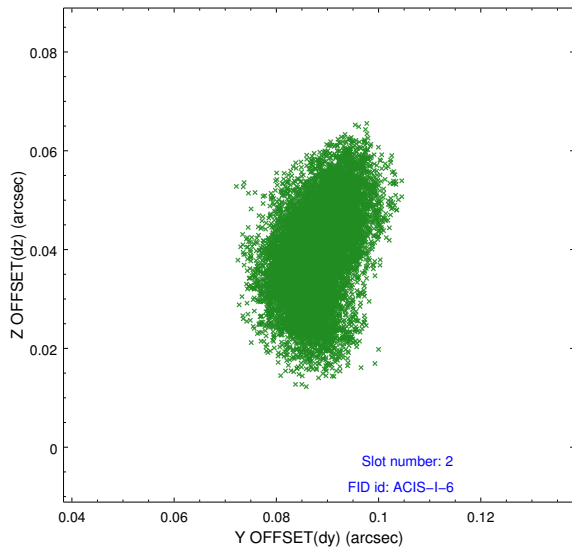
2.5.1 Slot 0



2.5.2 Slot 1



2.5.3 Slot 2



A Summary

A.1 Status

V&V Scientist	Jen Lauer
V&V Date (YYYY-MM-DD)	2012.04.27
V&V Edition	1
V&V Disposition and Status	OK
V&V Charge Time	45.9422769

A.2 Comments