

# V&V Reference Report

## L2 ASCDS Version : 8.4.4

Observation 7743 - L2 Version 3  
Chandra X-Ray Center

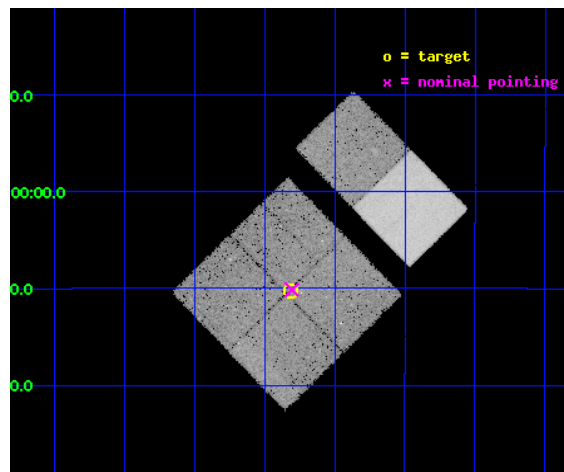
L2 Processing Date : Apr 19 2012

## Contents

<b>1</b>	<b>Front</b>	<b>2</b>
<b>2</b>	<b>OBI</b>	<b>3</b>
2.1	OBI . . . . .	3
2.1.1	Images . . . . .	3
2.1.2	Bias . . . . .	3
2.1.3	Parameters . . . . .	4
2.1.4	Events . . . . .	4
2.2	Compared Parameters . . . . .	5
2.3	Aspect . . . . .	6
2.4	Star Slots . . . . .	9
2.4.1	Slot 3 . . . . .	9
2.4.2	Slot 4 . . . . .	10
2.4.3	Slot 5 . . . . .	11
2.4.4	Slot 6 . . . . .	12
2.4.5	Slot 7 . . . . .	13
2.5	FID Slots . . . . .	14
2.5.1	Slot 0 . . . . .	14
2.5.2	Slot 1 . . . . .	15
2.5.3	Slot 2 . . . . .	16
<b>A</b>	<b>Summary</b>	<b>17</b>
A.1	Status . . . . .	17
A.2	Comments . . . . .	17

# 1 Front

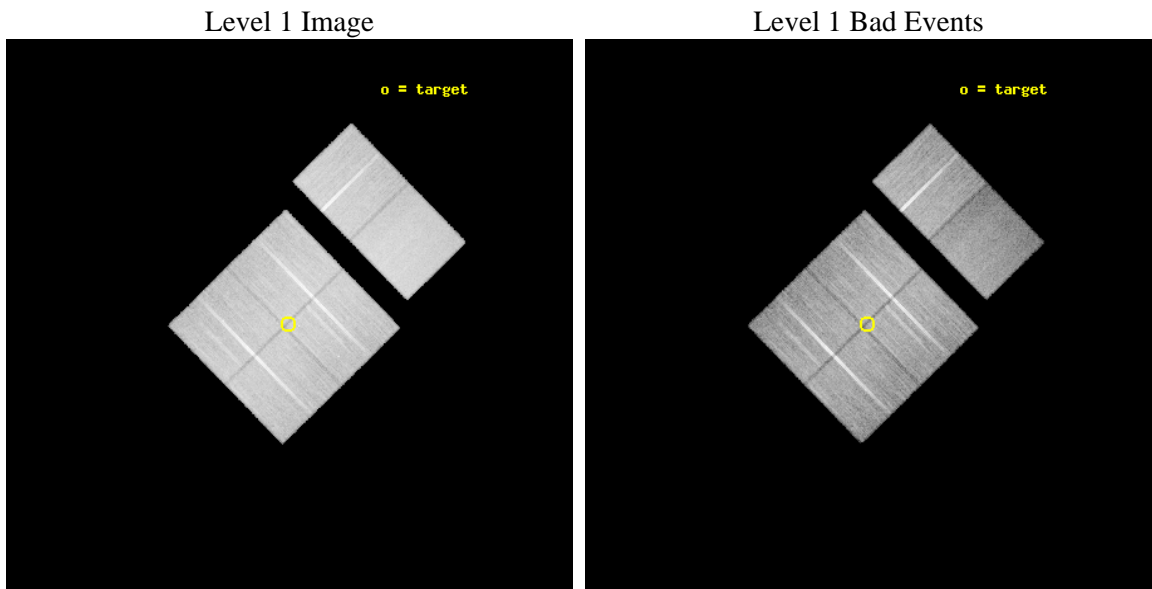
seq_num	701411	Sequence number
obs_id	7743	Observation id
title	Are AGN Quenching the Star Formation in Post-Starburst Galaxies?	P
observer	Prof. Ann Zabludoff	Principal investigator
object	EA01	Source name
dtcycle	0	&#160
cycle	P	events from which exps? Prim/Second/Both
ra_targ	165.328125	Observer's specified target RA [deg]
dec_targ	-12.171111	Observer's specified target Dec [deg]
ra_nom	165.32648632091	Nominal RA [deg]
dec_nom	-12.169259622223	Nominal Dec [deg]
roll_nom	45.680163669802	Nominal Roll [deg]
revision	3	Processing version of data
ontime	29135.99989152	Sum of GTIs [s]
livetime	28767.0623173	Livetime [s]
ontime0	29123.035920441	Sum of GTIs [s]
ontime1	29132.758891165	Sum of GTIs [s]
ontime2	29132.758871317	Sum of GTIs [s]
ontime3	29135.99989152	Sum of GTIs [s]
ontime6	29132.758901238	Sum of GTIs [s]
ontime7	29135.99989152	Sum of GTIs [s]
l2events	197989	Number of level 2 events



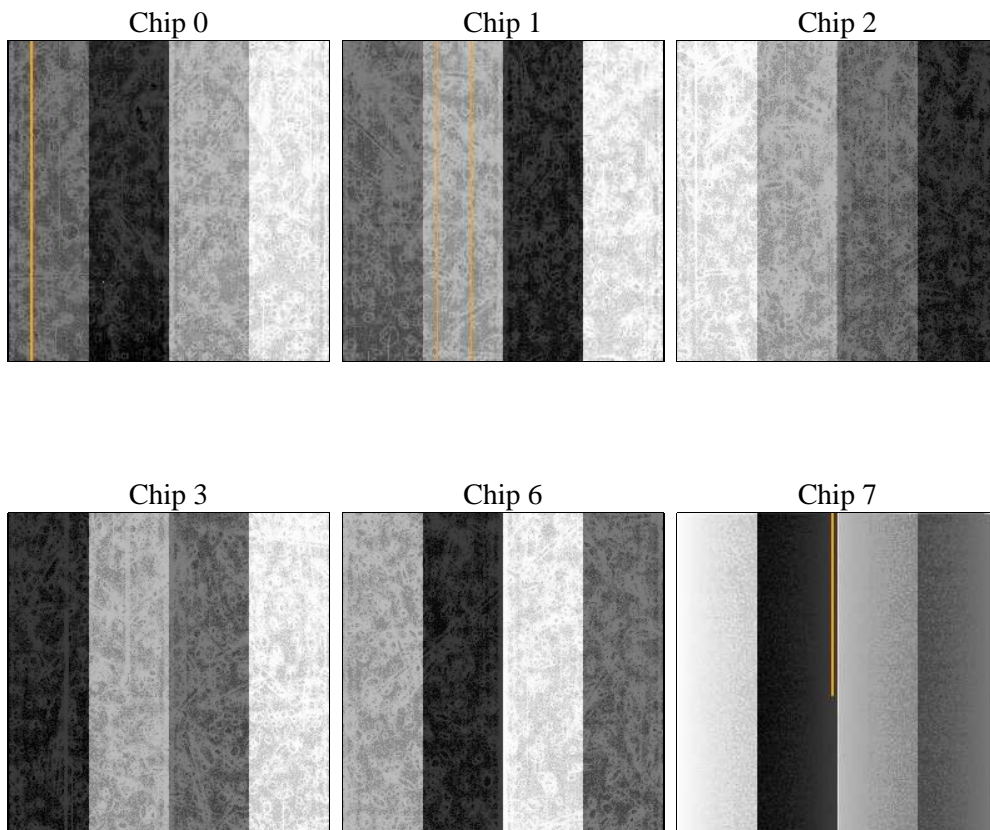
## 2 OBI

### 2.1 OBI

#### 2.1.1 Images



#### 2.1.2 Bias



### 2.1.3 Parameters

obi_num	0	Obi number	sched_exp_time	29000.000000	[s] Scheduled observation exposure time
ascdsver	8.4.4	Processing system revision	ontime	29135.99989152	Sum of GTIs [s]
caldbver	4.4.9	&#160	ontime0	29123.035920441	Sum of GTIs [s]
date	2012-04-19T14:46:12	Date and time of file creation	ontime1	29132.758891165	Sum of GTIs [s]
revision	3	Processing version of data	ontime2	29132.758871317	Sum of GTIs [s]
			ontime3	29135.99989152	Sum of GTIs [s]
			ontime6	29132.758901238	Sum of GTIs [s]
			ontime7	29135.99989152	Sum of GTIs [s]
			l1events	1317515	Number of level 1 events

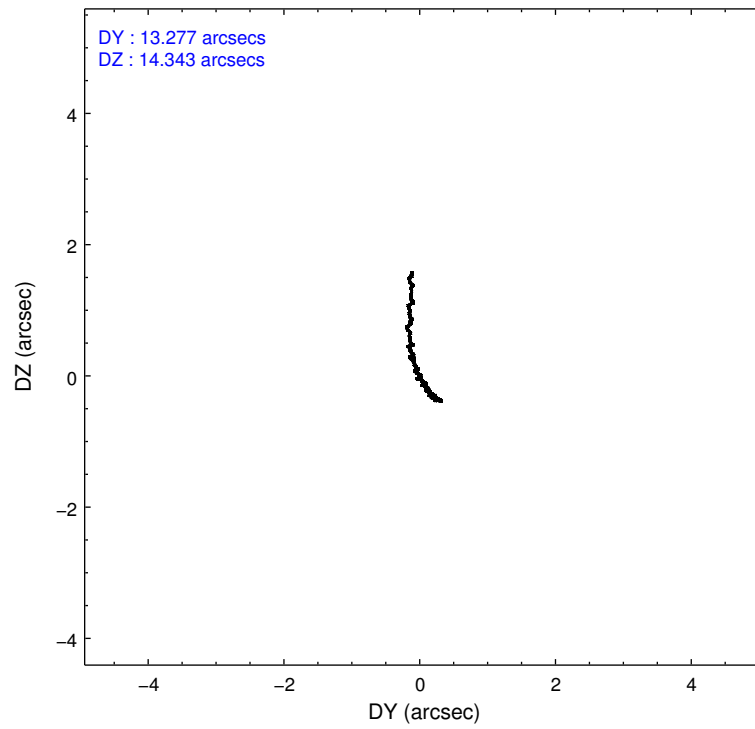
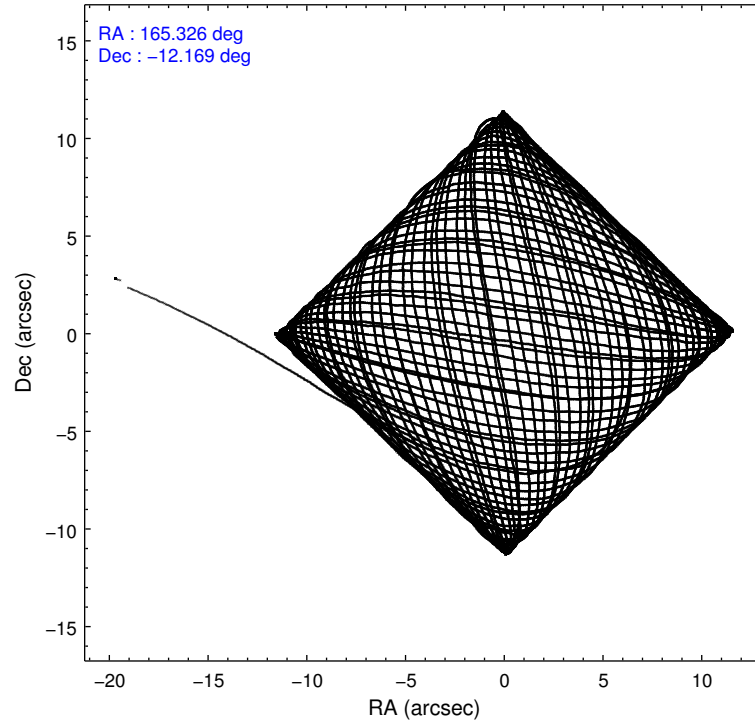
### 2.1.4 Events

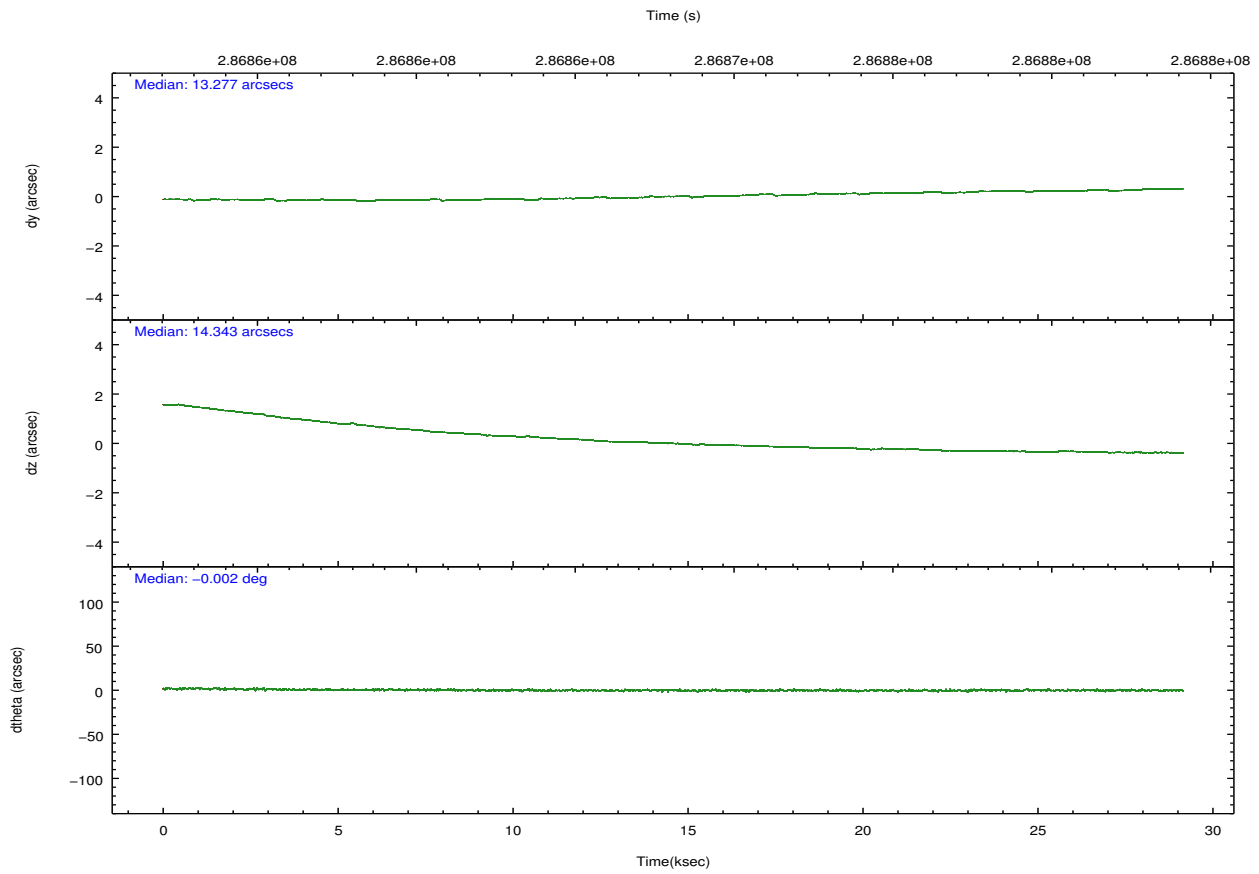
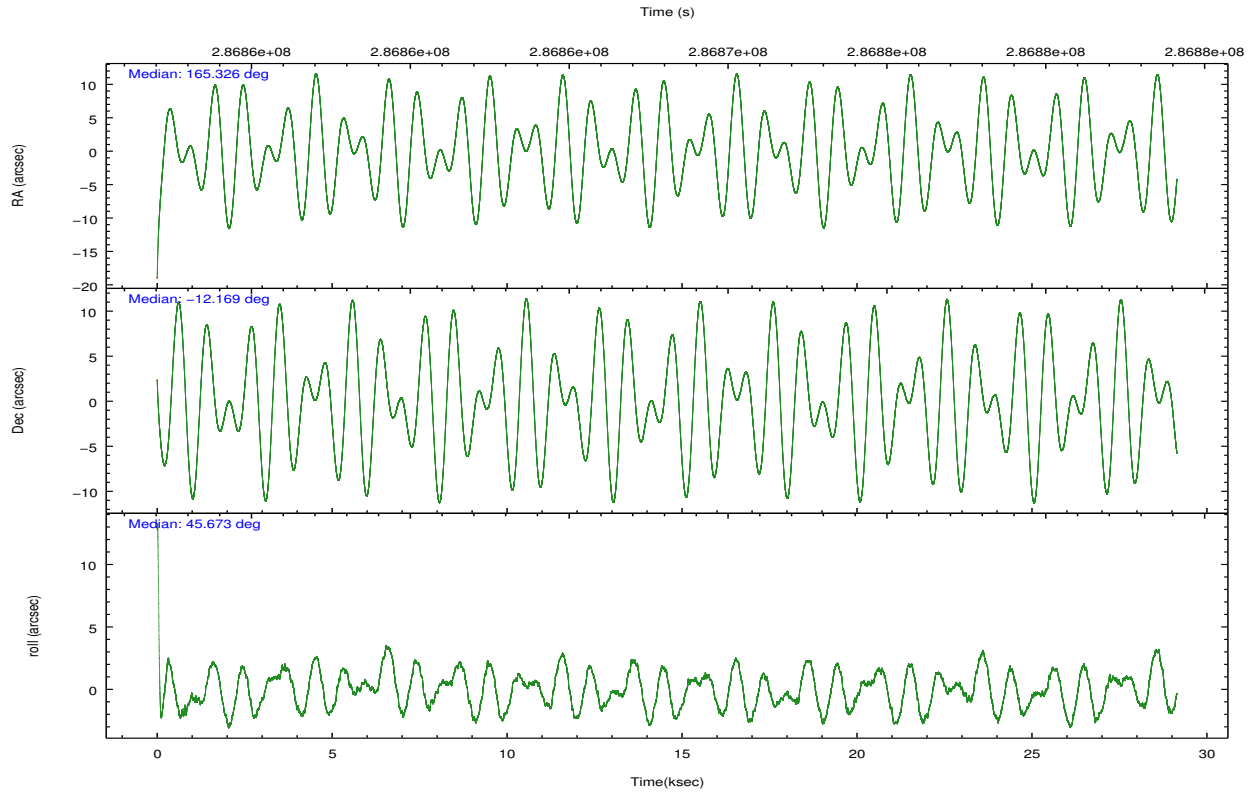
	ccd 0	ccd 1	ccd 2	ccd 3	ccd 6	ccd 7		ccd 0	ccd 1	ccd 2	ccd 3	ccd 6	ccd 7
level 1 events	200734	202306	226643	218724	225737	243371	grade 0 events	7484	8577	7641	7599	7749	10362
rejected events	179404	178355	205570	198086	203232	133240		3%	4%	3%	3%	3%	4%
rejected %	89%	88%	90%	90%	90%	54%	grade 1 events	105	112	119	115	125	323
								0%	0%	0%	0%	0%	0%
							grade 2 events	5163	5378	5061	4569	5062	21966
								2%	2%	2%	2%	2%	9%
							grade 3 events	2419	2572	2277	2297	2490	10377
								1%	1%	1%	1%	1%	4%
							grade 4 events	2233	2646	2273	2193	2462	10284
								1%	1%	1%	1%	1%	4%
							grade 5 events	7405	8333	7227	8905	9077	25836
								3%	4%	3%	4%	4%	10%
							grade 6 events	4133	4896	3925	4081	4836	57632
								2%	2%	1%	1%	2%	23%
							grade 7 events	171792	169792	198120	188965	193936	106591
								85%	83%	87%	86%	85%	43%

## 2.2 Compared Parameters

Parameter	Planned	Actual	Parameter	Planned	Actual
Instrument	ACIS	ACIS	Obspar format version number	7	7
Detector	ACIS-012367	ACIS-012367	Obspar file type	PREDICTED	ACTUAL
Grating	NONE	NONE	Obspar update status	NONE	UPDATED
Data mode	VFAINT	VFAINT	CCD I0 on	Y	Y
Observation mode	POINTING	POINTING	CCD I1 on	Y	Y
[deg] Pointing RA	165.319653	165.3264863209089	CCD I2 on	Y	Y
[deg] Pointing Dec	-12.195931	-12.16925962222299	CCD I3 on	Y	Y
[deg] Pointing Roll	45.470024	45.68016366980211	CCD S0 on	N	N
[mm] SIM focus pos	-0.782348	-0.7809083437167272	CCD S1 on	N	N
[mm] SIM defocus	0	0.001439871863259334	CCD S2 on	O2	Y
[mm] SIM translation stage pos	-233.592463	-233.5874344608287	CCD S3 on	O1	Y
[mm] SIM translation stage offset	0	-0.005018542100998502	CCD S4 on	N	N
[s] Observation start time (MET)	286853646.184000	286852534.60294	CCD S5 on	N	N
Observation start date	2007-02-03T01:33:01	2007-02-03T01:15:34	Number of optional ACIS chips dropped	0	0
[s] Observation end time (MET)	286882646.184000	286884002.10443	On-chip summing requested	N	N
Observation end date	2007-02-03T09:36:21	2007-02-03T10:00:02	Subarray requested	NONE	NONE
Read mode	TIMED	TIMED	Alternating exposures requested	N	N
			[s] Primary exposure time	0.000000	3.2

## 2.3 Aspect



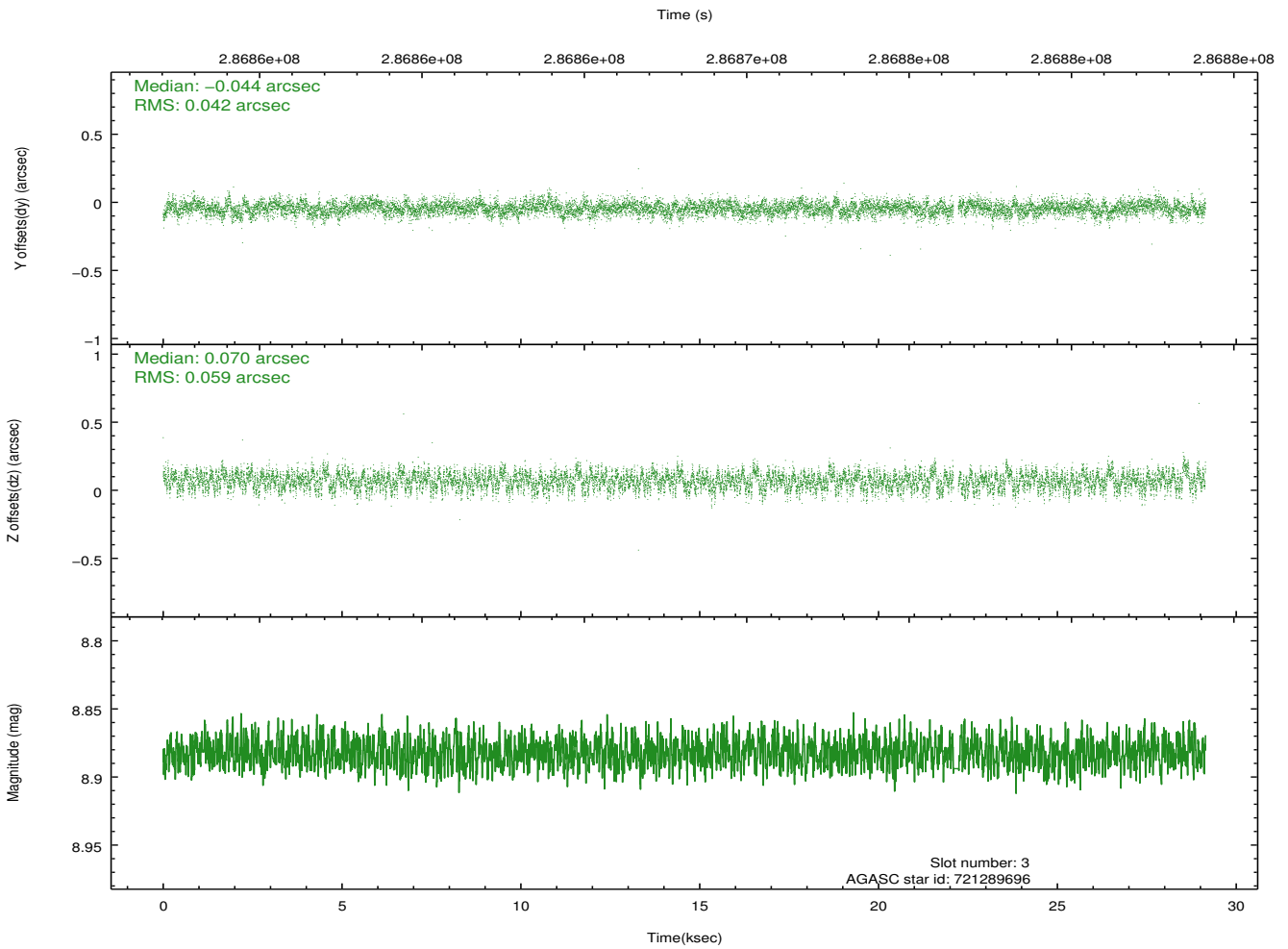
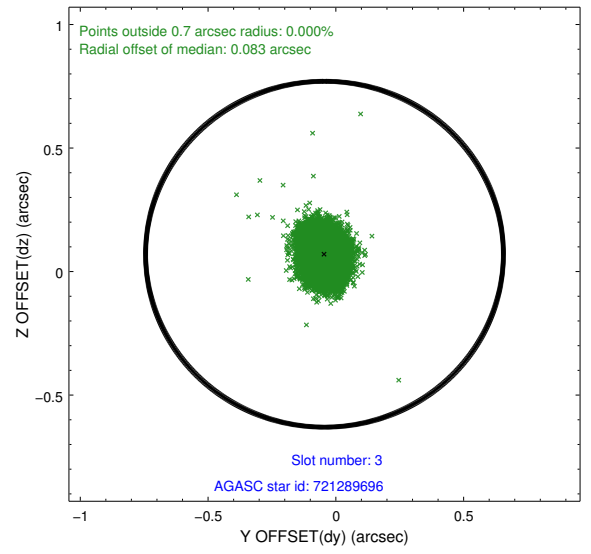
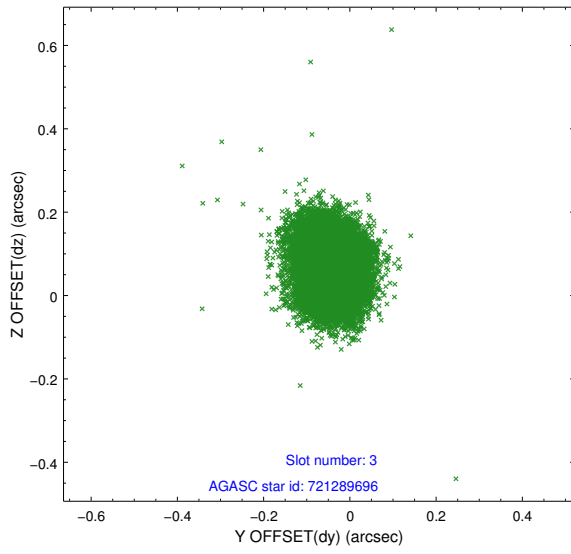


### Slot Statistics

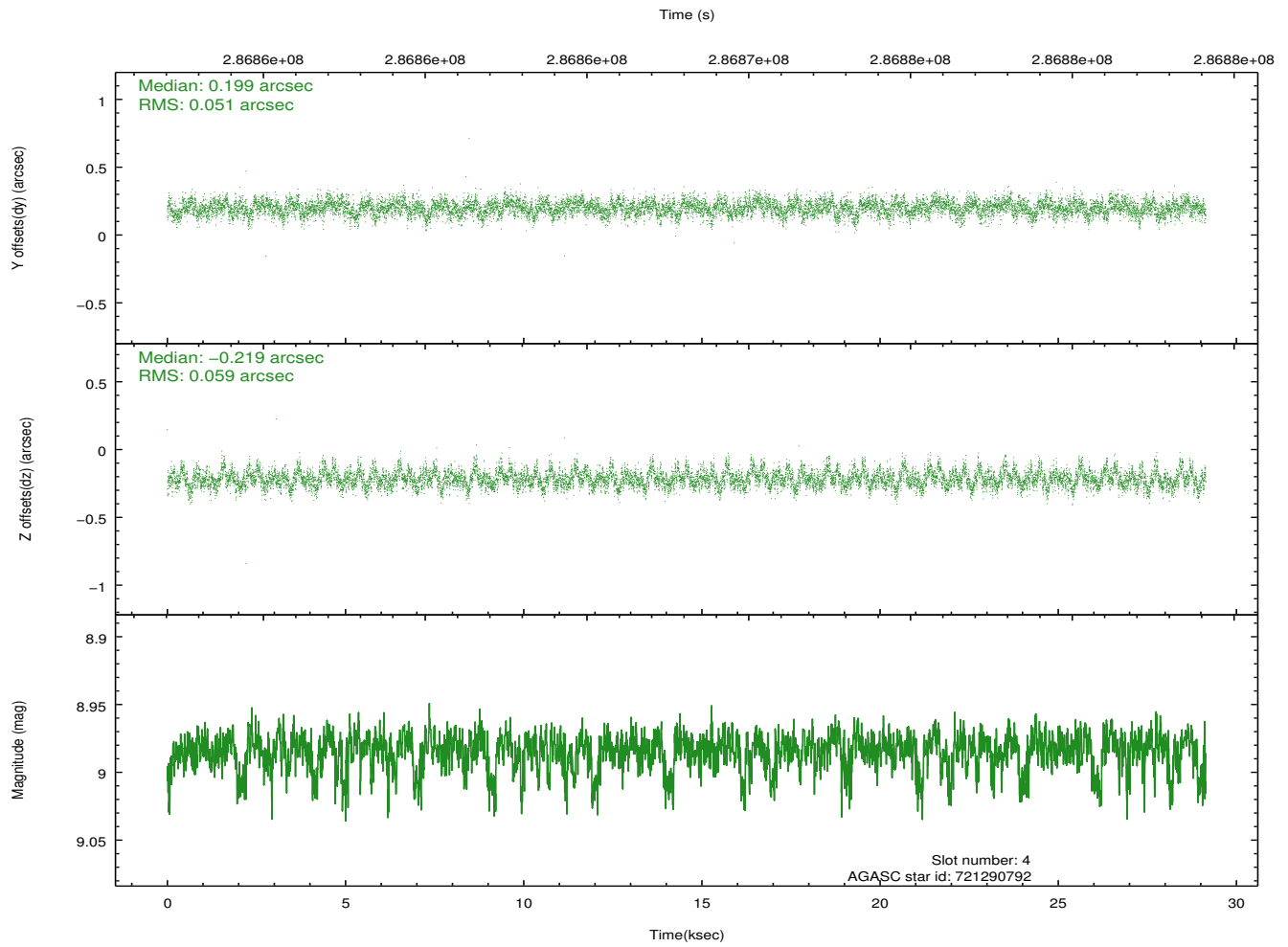
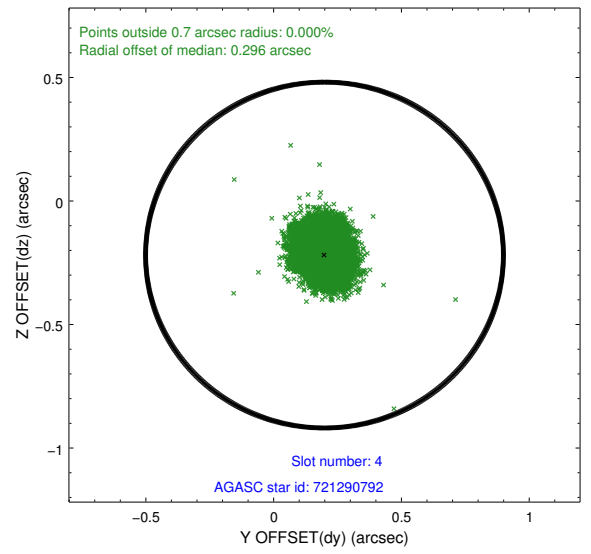
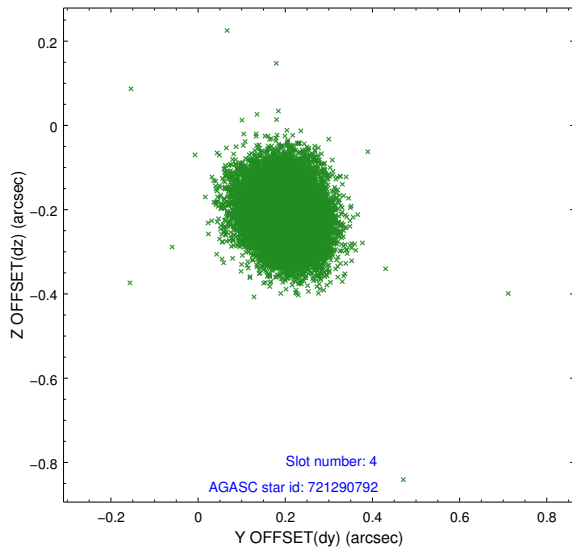
slot	status	id	mag	n_pts	med_dy	med_dz	dr1	dr2	ra	dec	mean_y	mean_z
0	FID	ACIS-I-1	7.24	7106	-0.015	0.013	0.018	0.077	0.000000	0.000000	926.19	-838.13
1	FID	ACIS-I-4	7.18	7107	0.202	0.022	0.015	0.051	0.000000	0.000000	2146.50	1061.65
2	FID	ACIS-I-5	7.22	7109	-0.285	0.035	0.012	0.030	0.000000	0.000000	-1821.97	1059.63
3	GUIDE	721289696	8.88	14133	-0.044	0.070	0.076	0.124	165.648575	-12.382534	332.19	-1295.96
4	GUIDE	721290792	8.98	14213	0.199	-0.219	0.083	0.136	165.539453	-11.848820	1433.96	323.86
5	GUIDE	721298040	8.27	14214	-0.195	-0.166	0.054	0.087	165.299119	-11.516254	1693.60	1767.64
6	GUIDE	721429752	9.48	14199	-0.075	0.282	0.093	0.153	166.036539	-12.260488	1601.27	-1962.53
7	GUIDE	721690048	8.19	14214	0.114	0.030	0.079	0.122	165.214859	-12.558682	-1188.68	-653.28

## 2.4 Star Slots

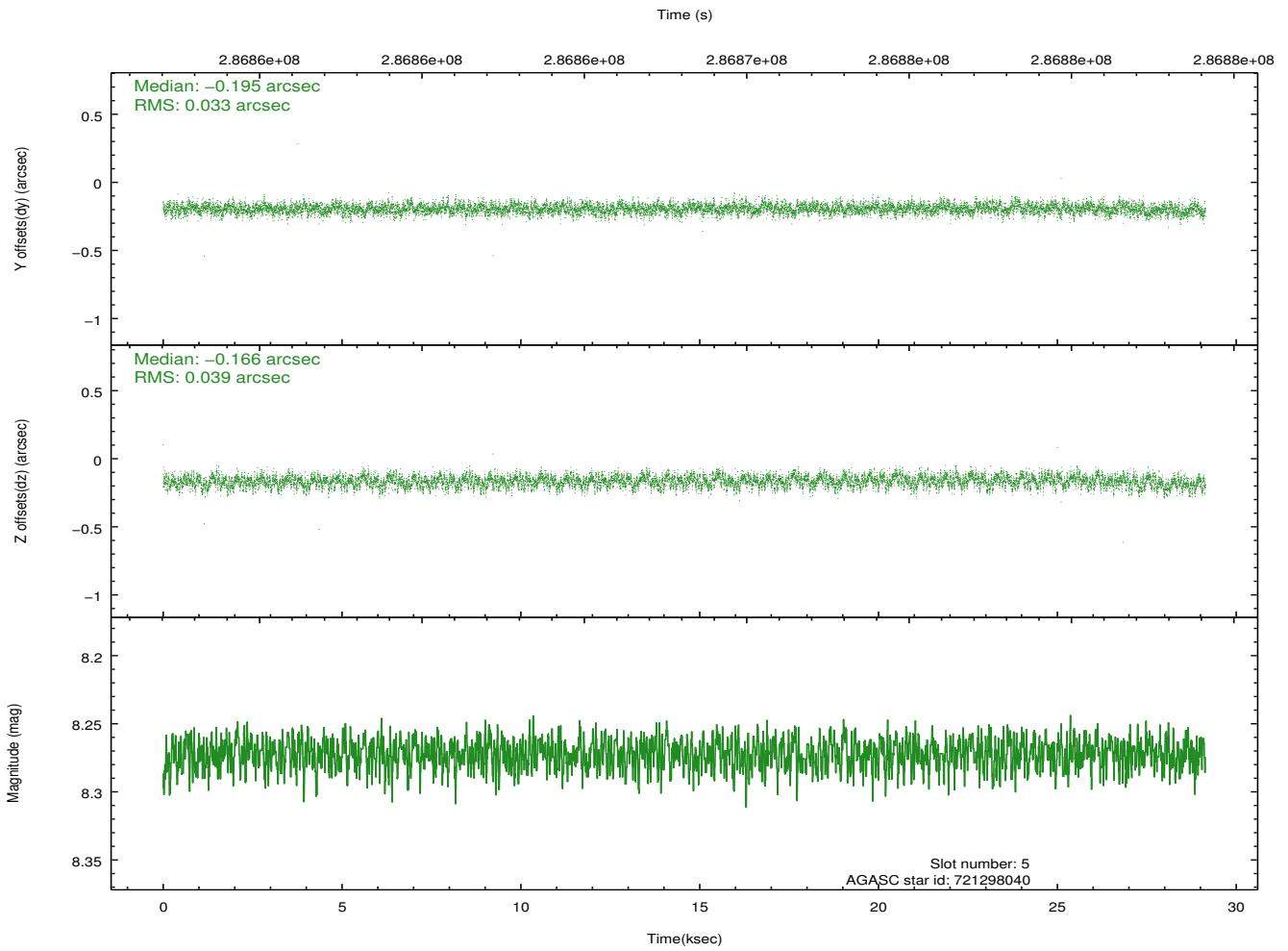
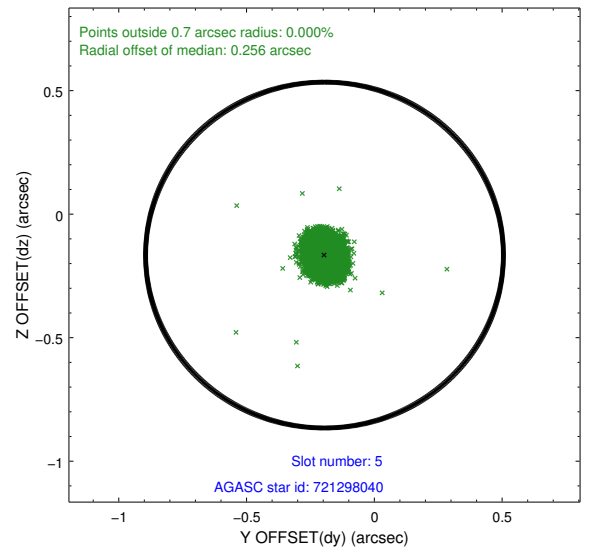
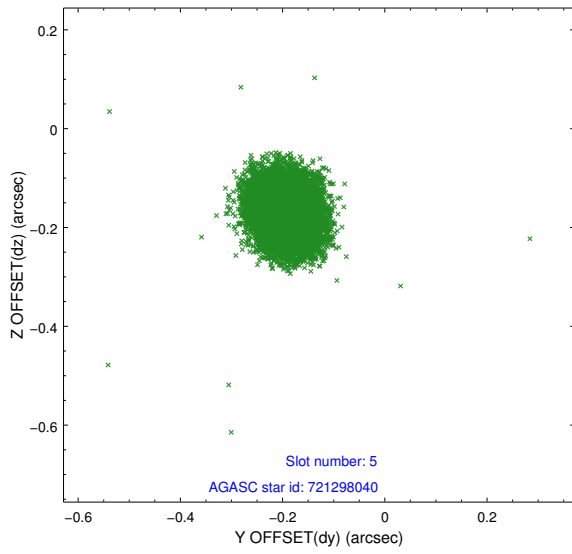
### 2.4.1 Slot 3



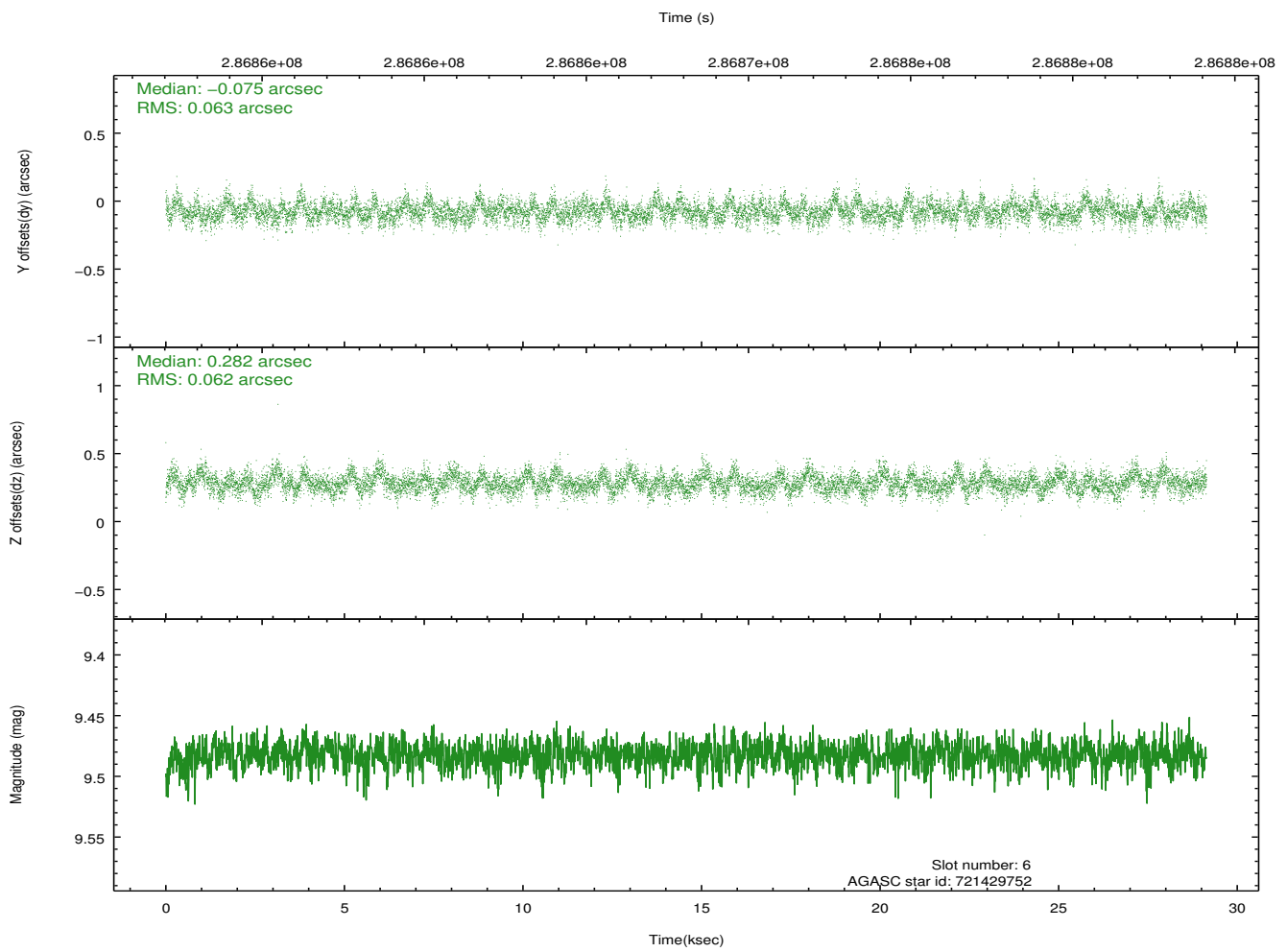
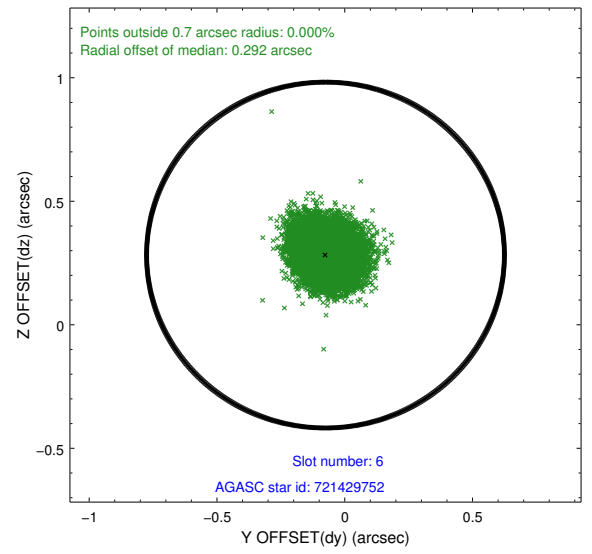
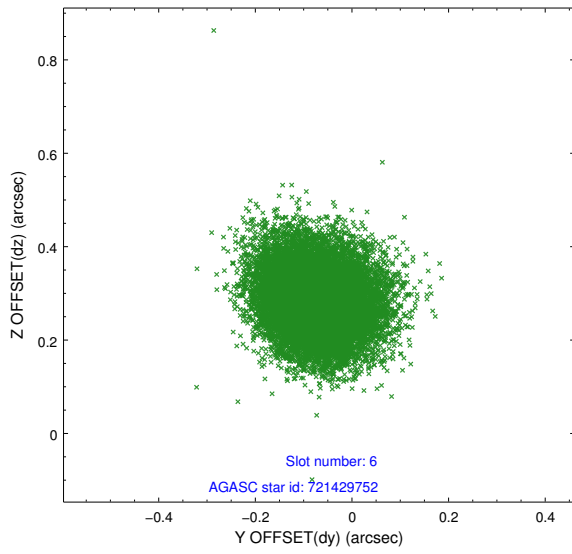
### 2.4.2 Slot 4



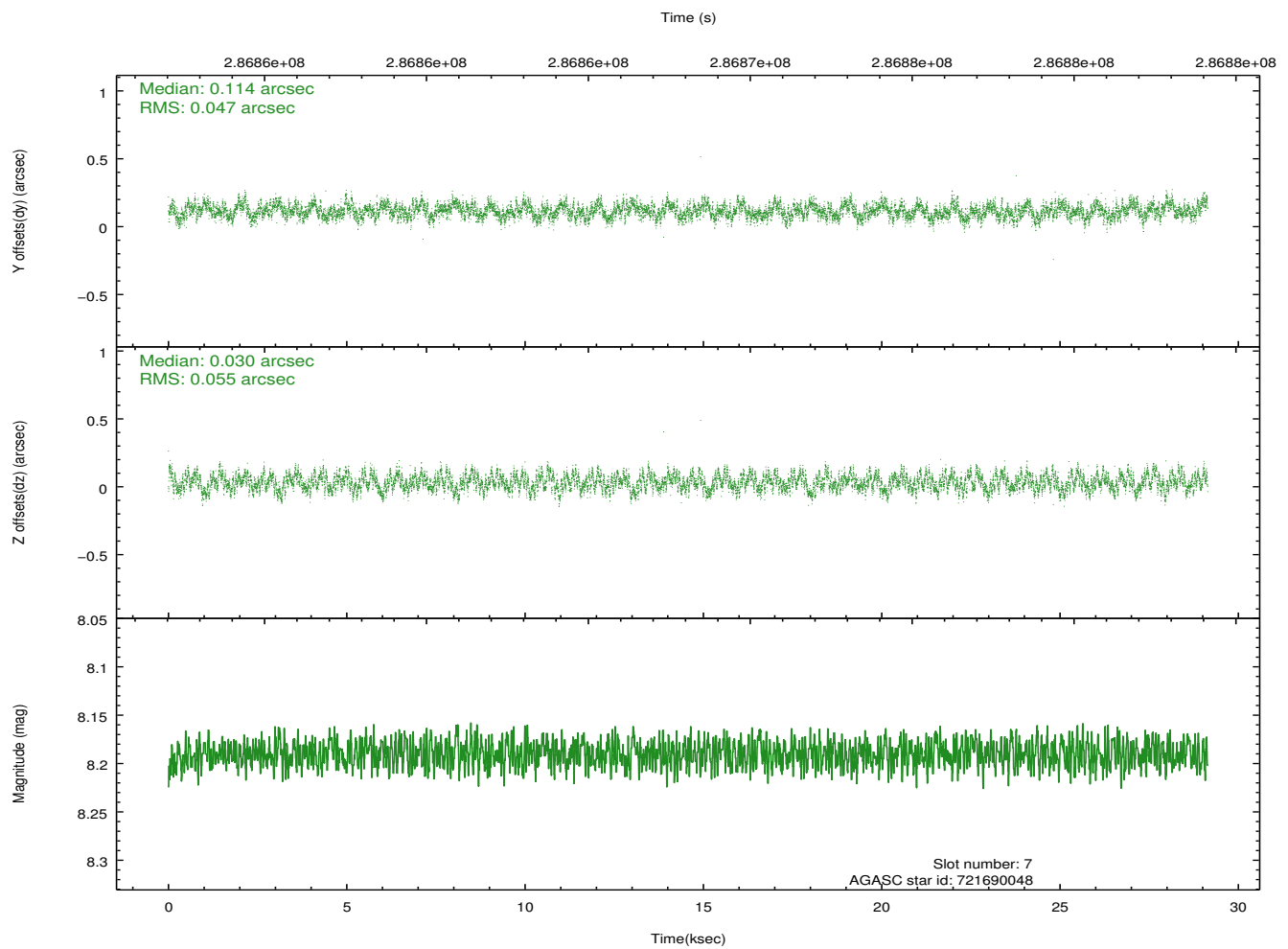
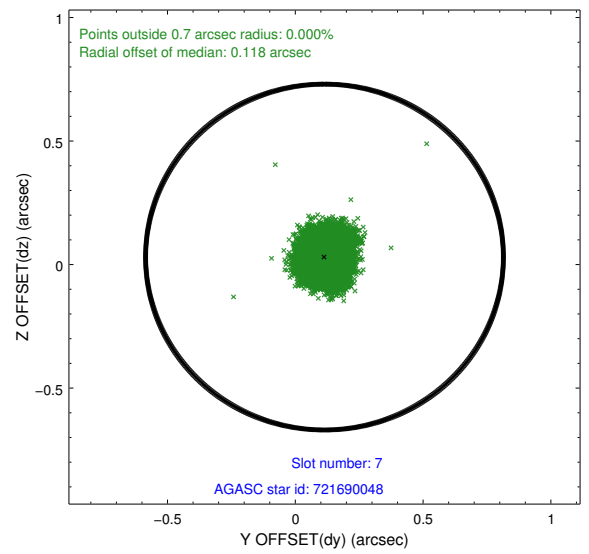
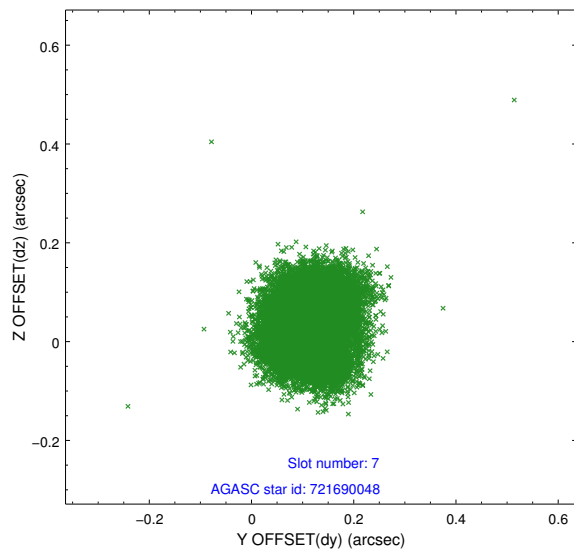
### 2.4.3 Slot 5



## 2.4.4 Slot 6

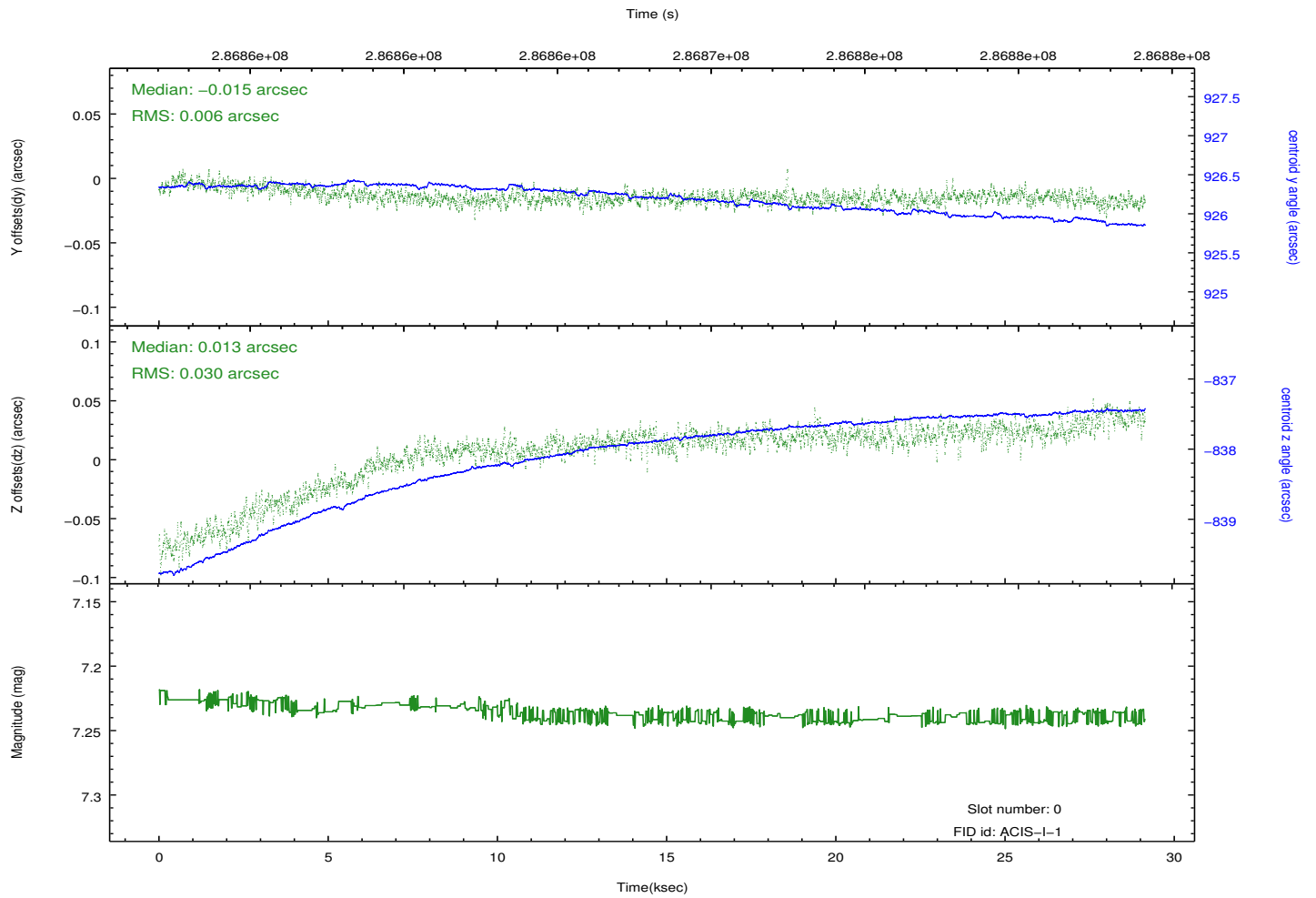
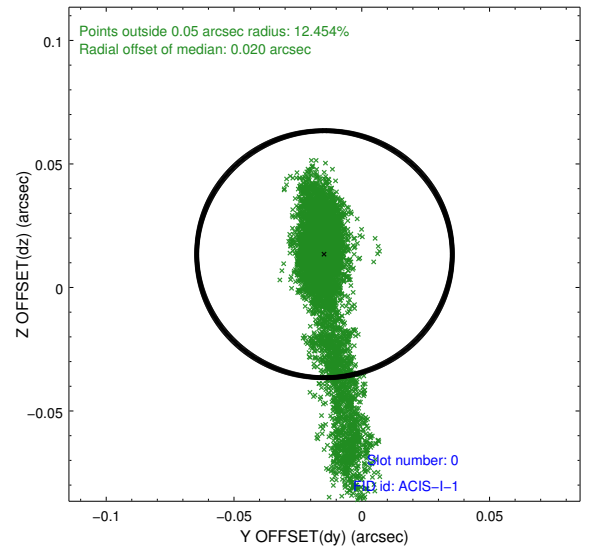
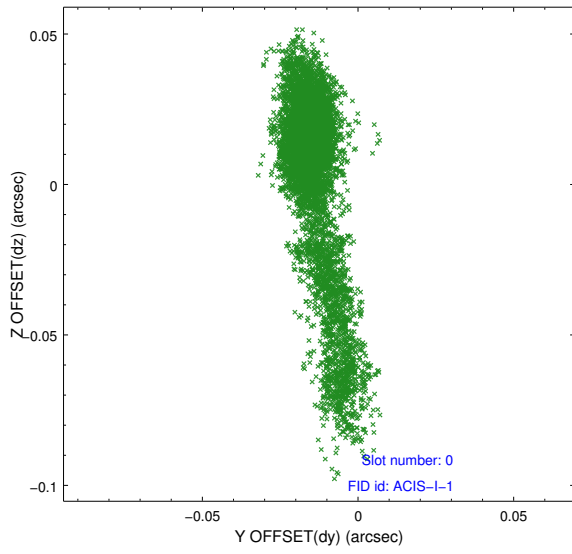


## 2.4.5 Slot 7

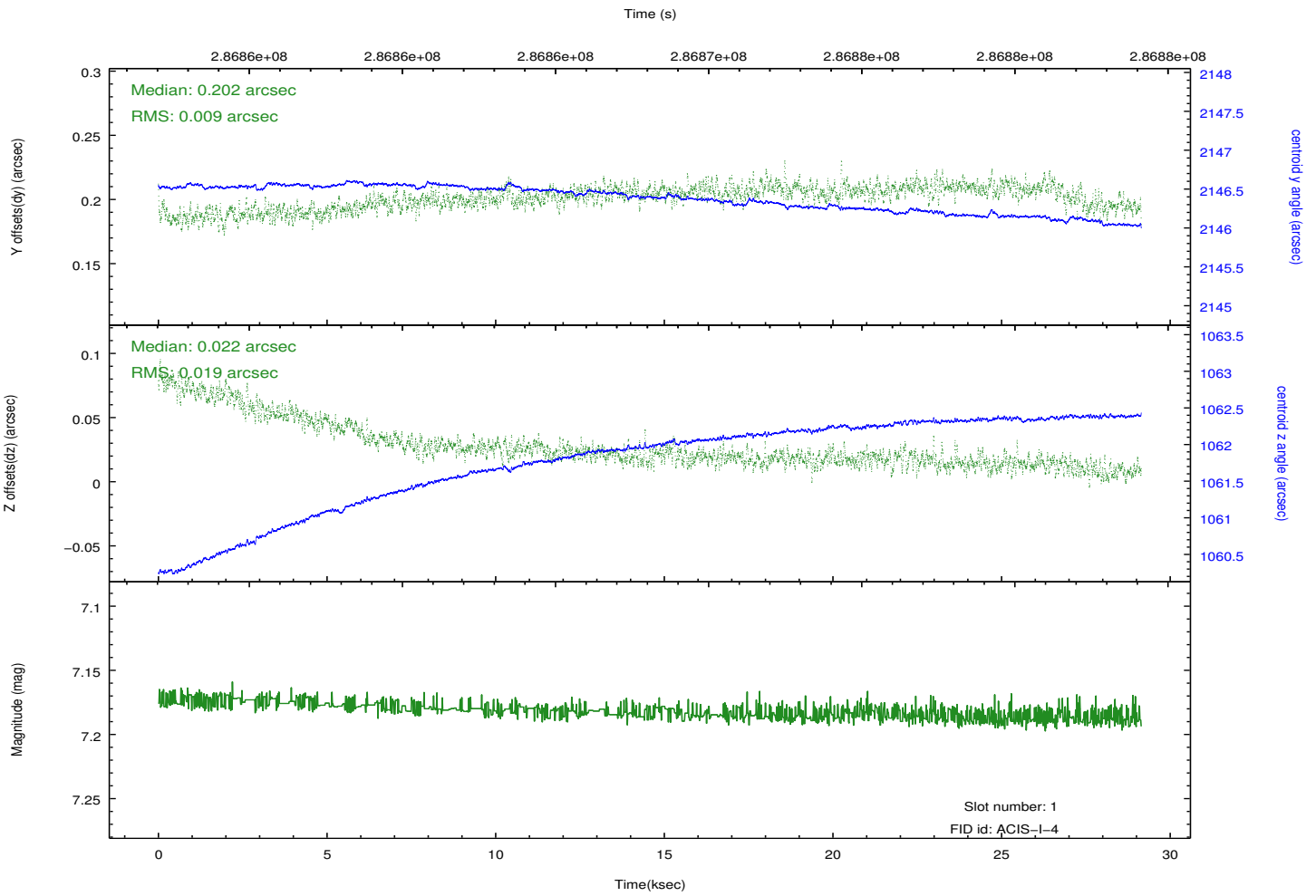
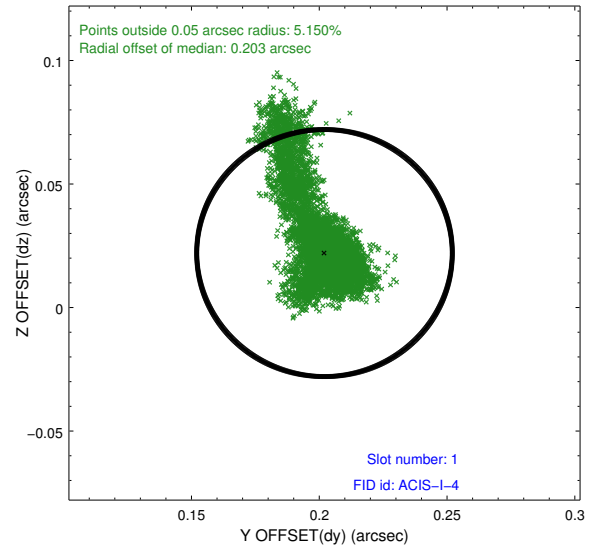
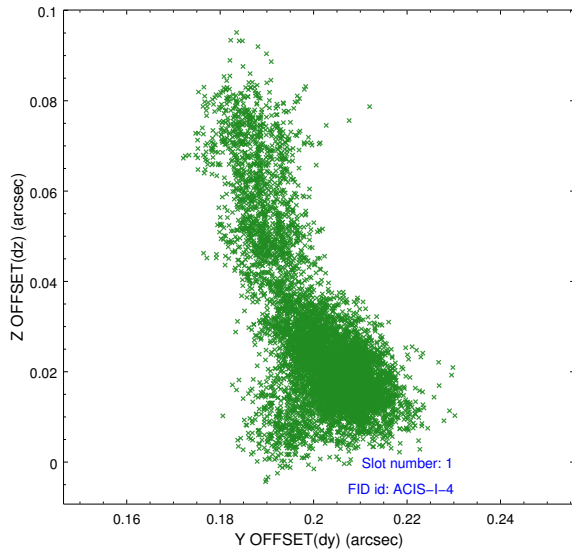


## 2.5 FID Slots

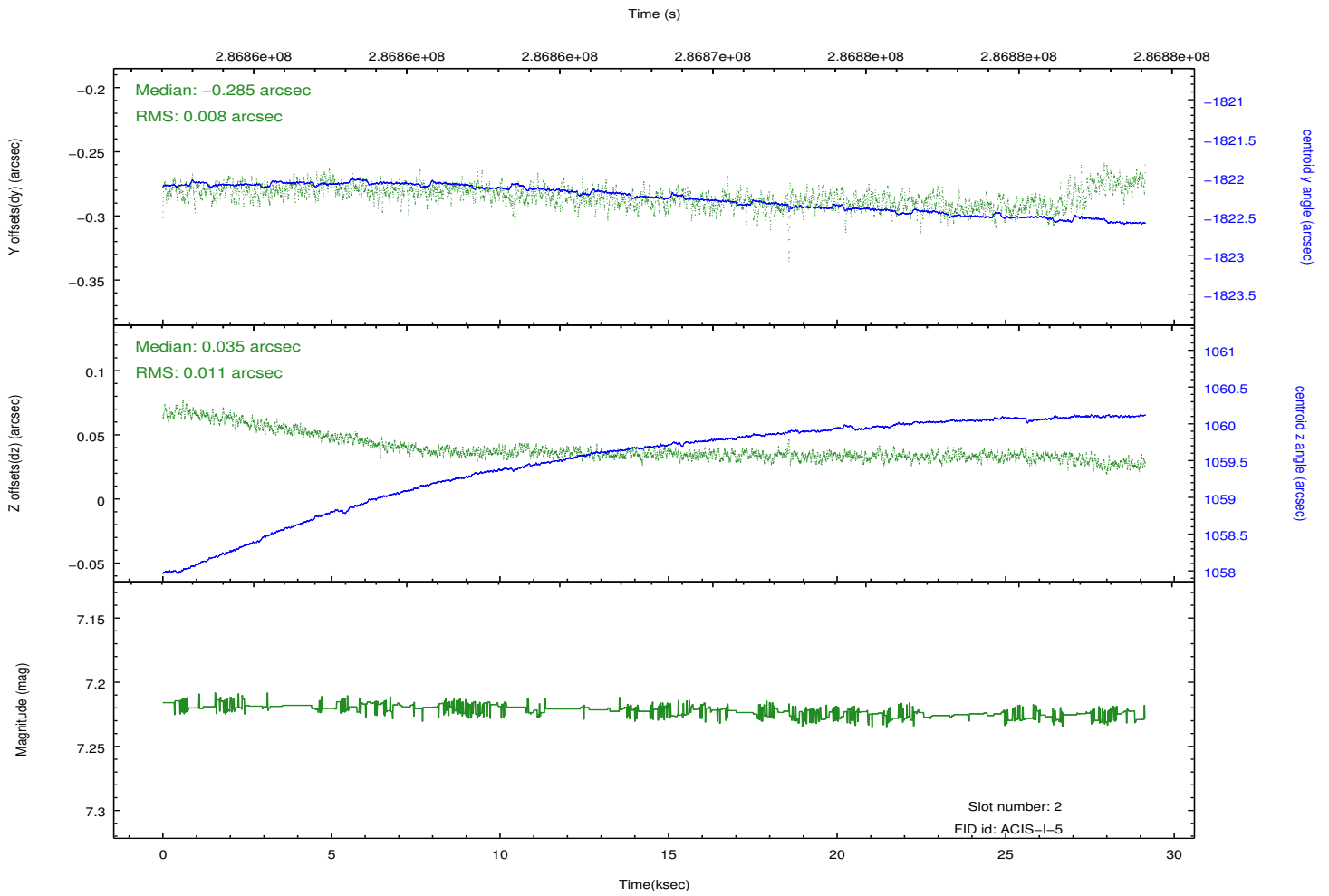
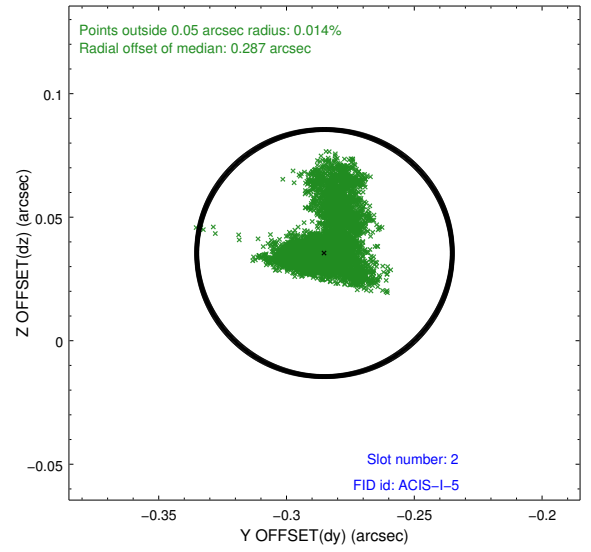
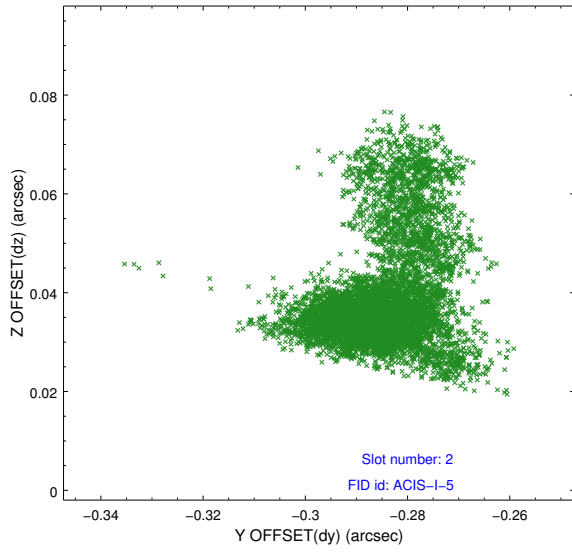
### 2.5.1 Slot 0



## 2.5.2 Slot 1



### 2.5.3 Slot 2



# A Summary

## A.1 Status

V&V Scientist	Beth Sundheim
V&V Date (YYYY-MM-DD)	2012.04.20
V&V Edition	1
V&V Disposition and Status	OK
V&V Charge Time	29.1359998

## A.2 Comments