

# V&V Reference Report

## L2 ASCDS Version : 8.4.4

Observation 7813 - L2 Version 2  
Chandra X-Ray Center

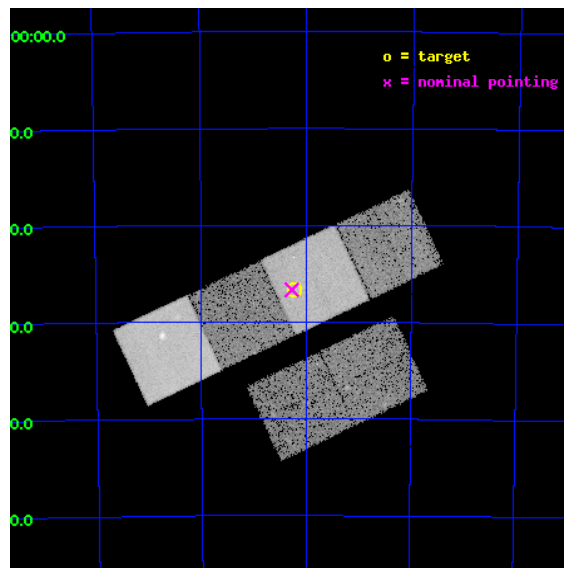
L2 Processing Date : Apr 27 2012

## Contents

<b>1</b>	<b>Front</b>	<b>2</b>
<b>2</b>	<b>OBI</b>	<b>3</b>
2.1	OBI . . . . .	3
2.1.1	Images . . . . .	3
2.1.2	Bias . . . . .	3
2.1.3	Parameters . . . . .	4
2.1.4	Events . . . . .	4
2.2	Compared Parameters . . . . .	5
2.3	Aspect . . . . .	6
2.4	Star Slots . . . . .	9
2.4.1	Slot 3 . . . . .	9
2.4.2	Slot 4 . . . . .	10
2.4.3	Slot 5 . . . . .	11
2.4.4	Slot 6 . . . . .	12
2.4.5	Slot 7 . . . . .	13
2.5	FID Slots . . . . .	14
2.5.1	Slot 0 . . . . .	14
2.5.2	Slot 1 . . . . .	15
2.5.3	Slot 2 . . . . .	16
<b>A</b>	<b>Summary</b>	<b>17</b>
A.1	Status . . . . .	17
A.2	Comments . . . . .	17

# 1 Front

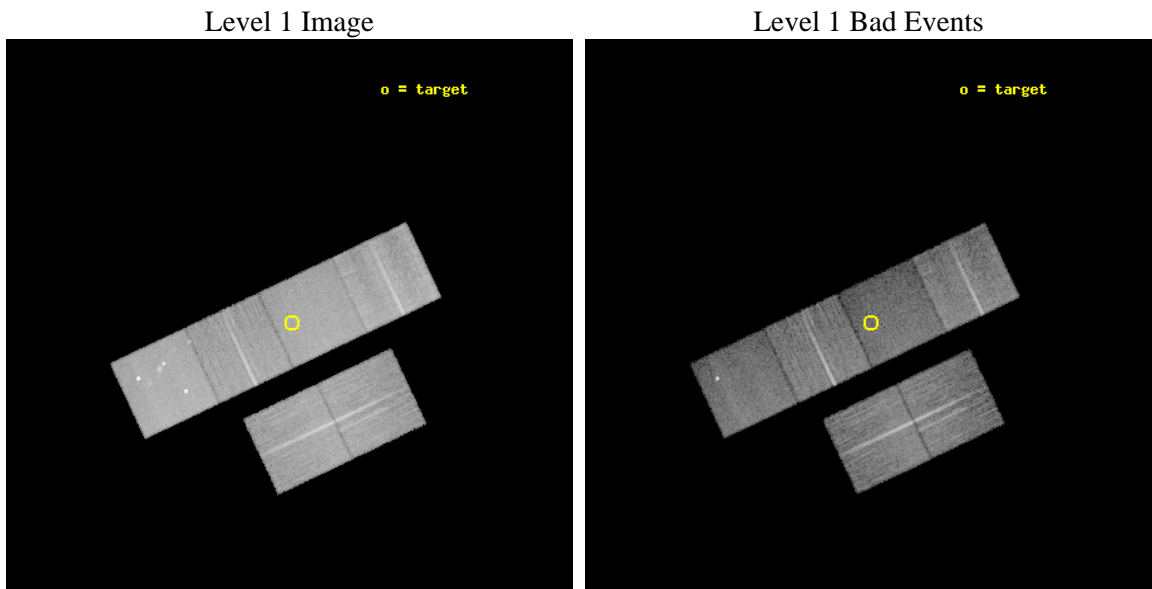
seq_num	701477	Sequence number
obs_id	7813	Observation id
title	The Chandra-RBGS Survey of a Complete Sample of Luminous Infrared Galaxies	Proposal title
observer	Professor David Sanders	Principal investigator
object	ESO 069-IG006	Source name
dtcycle	0	&#160
cycle	P	events from which exps? Prim/Second/Both
ra_targ	249.555	Observer's specified target RA [deg]
dec_targ	-68.445222	Observer's specified target Dec [deg]
ra_nom	249.56819163538	Nominal RA [deg]
dec_nom	-68.444676882249	Nominal Dec [deg]
roll_nom	334.70022310411	Nominal Roll [deg]
revision	2	Processing version of data
ontime	14721.896883905	Sum of GTIs [s]
livetime	14535.479361099	Livetime [s]
ontime2	14715.455933392	Sum of GTIs [s]
ontime3	14721.773763895	Sum of GTIs [s]
ontime5	14721.855843902	Sum of GTIs [s]
ontime6	14721.814803898	Sum of GTIs [s]
ontime7	14721.896883905	Sum of GTIs [s]
ontime8	14718.491753578	Sum of GTIs [s]
l2events	179584	Number of level 2 events



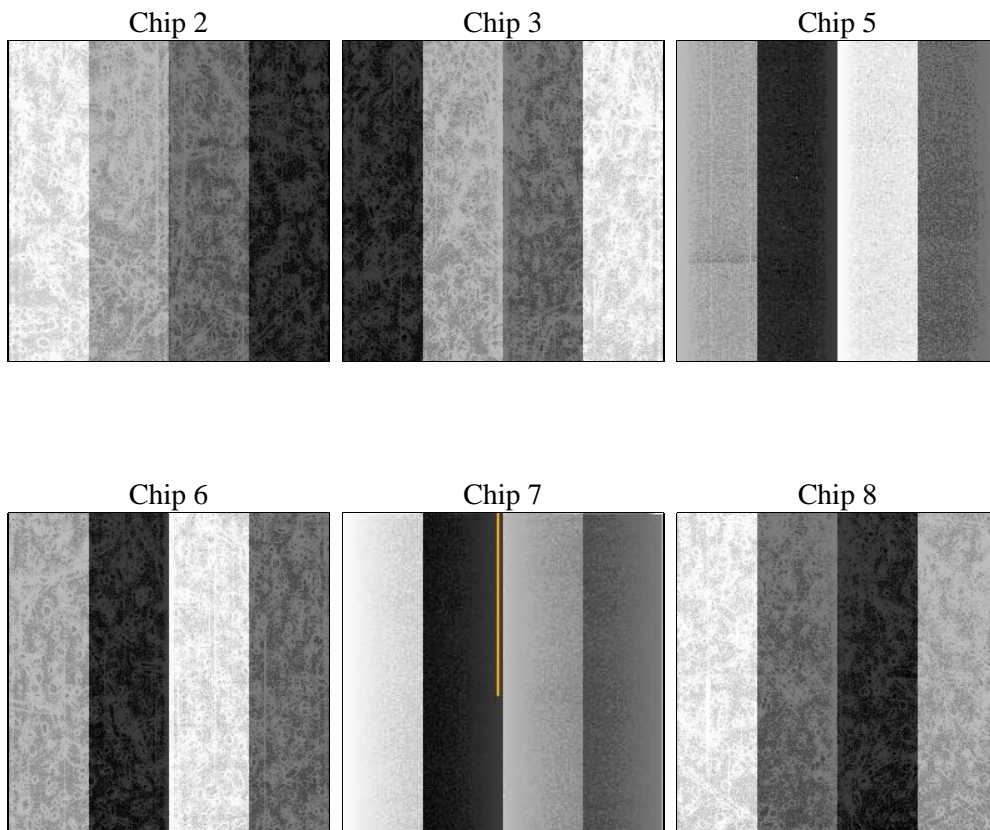
## 2 OBI

### 2.1 OBI

#### 2.1.1 Images



#### 2.1.2 Bias



### 2.1.3 Parameters

obi_num	0	Obi number	sched_exp_time	14678.187000	[s] Scheduled observation exposure time
ascdsver	8.4.4	Processing system revision	ontime	14721.896883905	Sum of GTIs [s]
caldsver	4.4.9	&#160	ontime2	14715.455933392	Sum of GTIs [s]
date	2012-04-27T01:48:36	Date and time of file creation	ontime3	14721.773763895	Sum of GTIs [s]
revision	2	Processing version of data	ontime5	14721.855843902	Sum of GTIs [s]
			ontime6	14721.814803898	Sum of GTIs [s]
			ontime7	14721.896883905	Sum of GTIs [s]
			ontime8	14718.491753578	Sum of GTIs [s]
			l1events	816870	Number of level 1 events

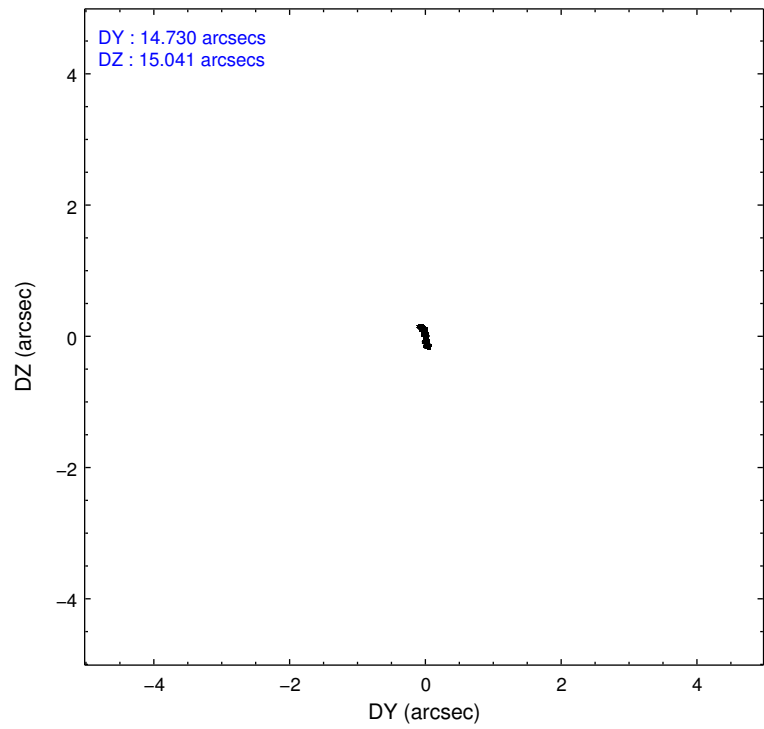
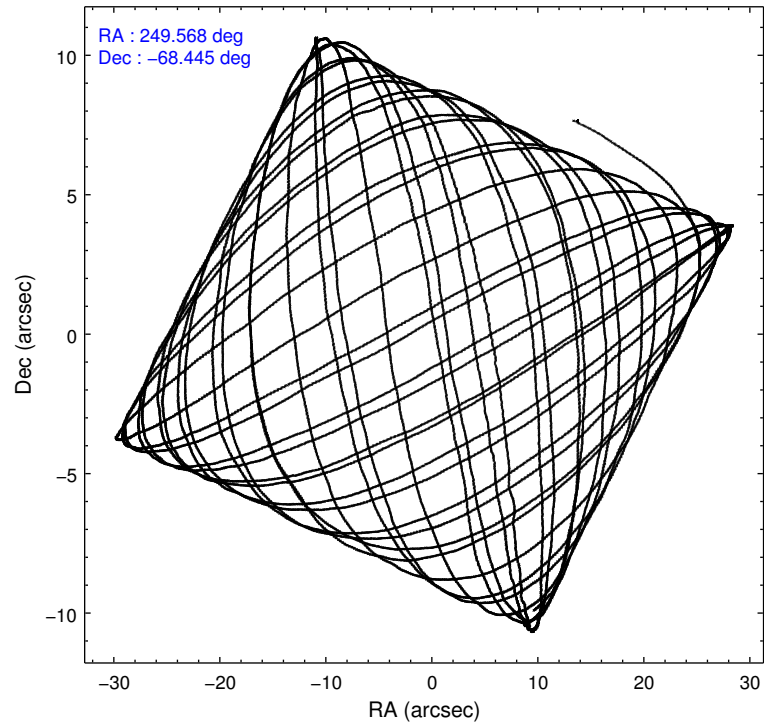
### 2.1.4 Events

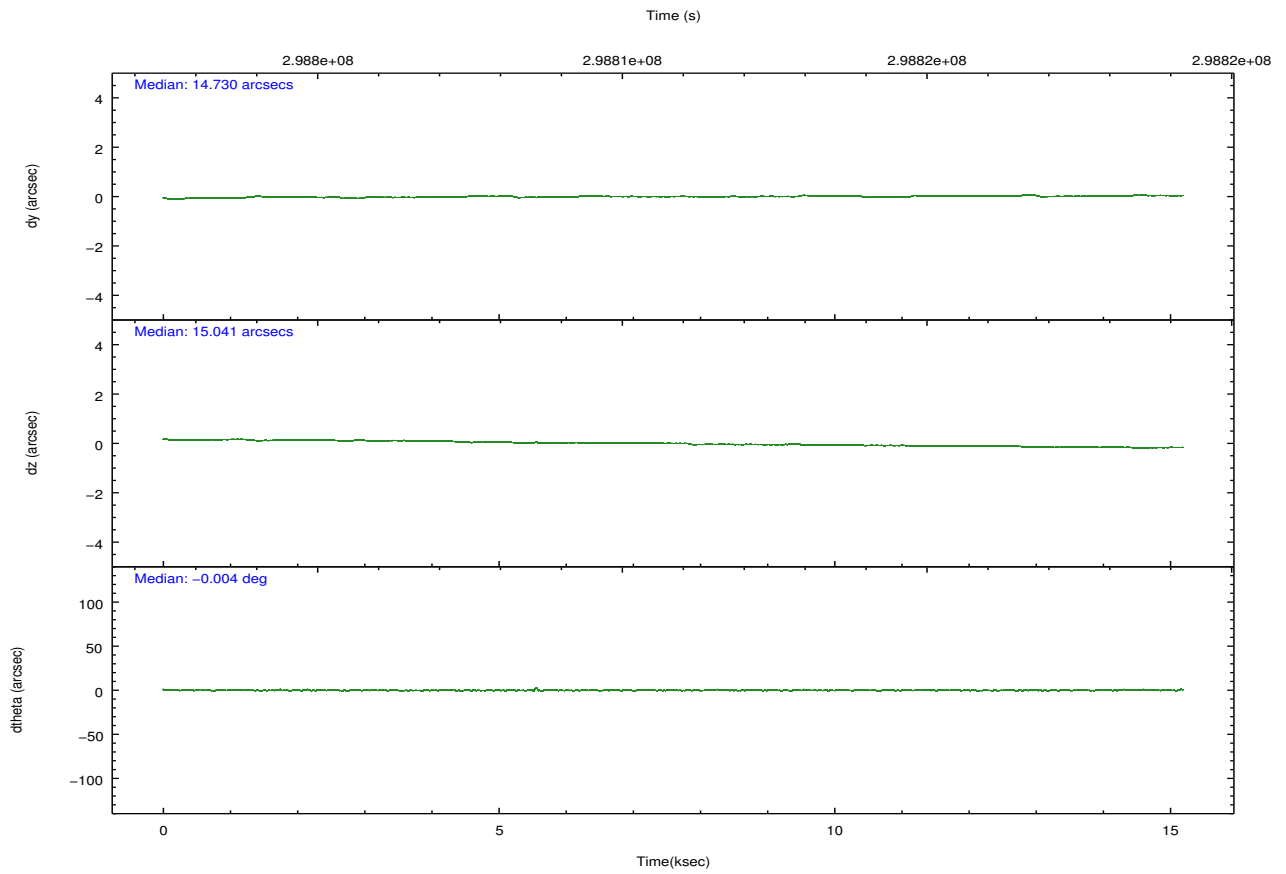
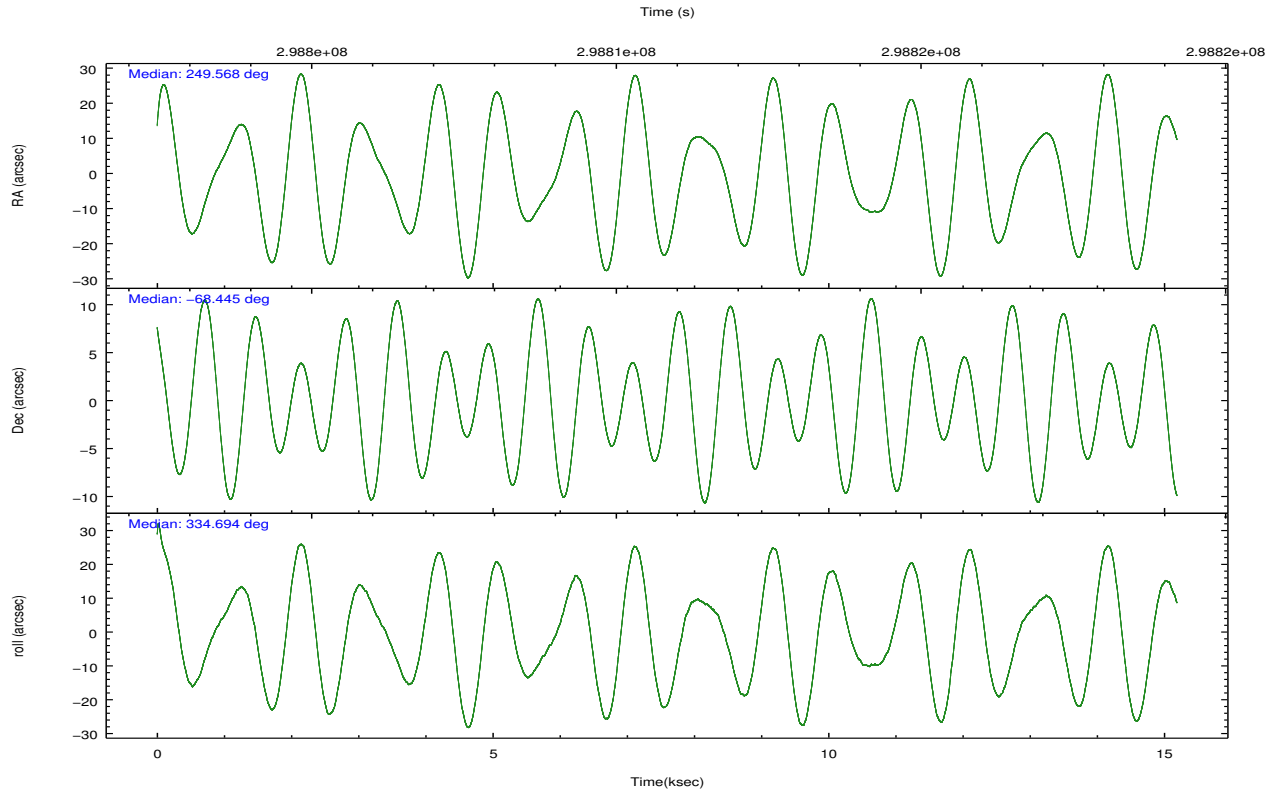
	ccd 2	ccd 3	ccd 5	ccd 6	ccd 7	ccd 8		ccd 2	ccd 3	ccd 5	ccd 6	ccd 7	ccd 8
level 1 events	130294	115801	170775	119208	132505	148287	grade 0 events	4354	4012	11906	4340	5911	10829
rejected events	118525	104718	83914	107025	71438	112446		3%	3%	6%	3%	4%	7%
rejected %	90%	90%	49%	89%	53%	75%	grade 1 events	61	63	304	49	190	112
								0%	0%	0%	0%	0%	0%
							grade 2 events	2732	2366	25436	2688	12457	8225
								2%	2%	14%	2%	9%	5%
							grade 3 events	1239	1216	3585	1403	5835	3752
								0%	1%	2%	1%	4%	2%
							grade 4 events	1282	1253	3361	1270	5652	3622
								0%	1%	1%	1%	4%	2%
							grade 5 events	3916	4736	13103	4852	14227	6885
								3%	4%	7%	4%	10%	4%
							grade 6 events	2166	2238	42607	2488	31246	9434
								1%	1%	24%	2%	23%	6%
							grade 7 events	114544	99917	70473	102118	56987	105428
								87%	86%	41%	85%	43%	71%

## 2.2 Compared Parameters

Parameter	Planned	Actual	Parameter	Planned	Actual
Instrument	ACIS	ACIS	Obspar format version number	7	7
Detector	ACIS-235678	ACIS-235678	Obspar file type	PREDICTED	ACTUAL
Grating	NONE	NONE	Obspar update status	NONE	UPDATED
Data mode	VFAINT	VFAINT	CCD I0 on	N	N
Observation mode	POINTING	POINTING	CCD I1 on	N	N
[deg] Pointing RA	249.494031	249.5681916353788	CCD I2 on	O1	Y
[deg] Pointing Dec	-68.447291	-68.44467688224923	CCD I3 on	O2	Y
[deg] Pointing Roll	334.474613	334.7002231041089	CCD S0 on	N	N
[mm] SIM focus pos	-0.684267	-0.6828225247311905	CCD S1 on	O3	Y
[mm] SIM defocus	0	0.001444936568705701	CCD S2 on	O5	Y
[mm] SIM translation stage pos	-190.132523	-190.1425803651734	CCD S3 on	Y	Y
[mm] SIM translation stage offset	0	0.01005778216563158	CCD S4 on	O4	Y
[s] Observation start time (MET)	298803738.184000	298802567.37247	CCD S5 on	N	N
Observation start date	2007-06-21T09:01:13	2007-06-21T08:42:47	Number of optional ACIS chips dropped	0	0
[s] Observation end time (MET)	298818417.184000	298818642.44824	On-chip summing requested	N	N
Observation end date	2007-06-21T13:05:52	2007-06-21T13:10:42	Subarray requested	NONE	NONE
Read mode	TIMED	TIMED	Alternating exposures requested	N	N
			[s] Primary exposure time	0.000000	3.2

## 2.3 Aspect



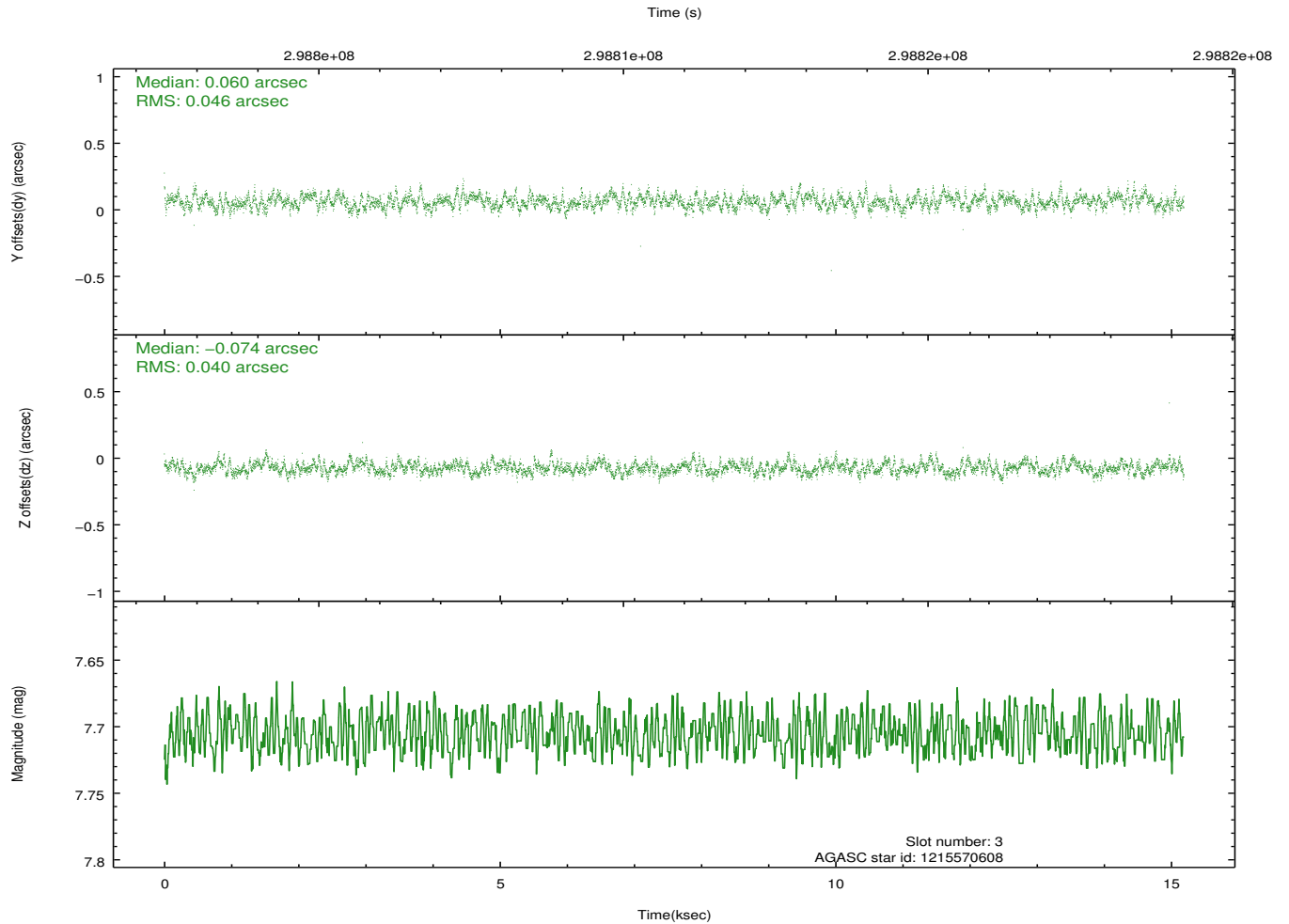
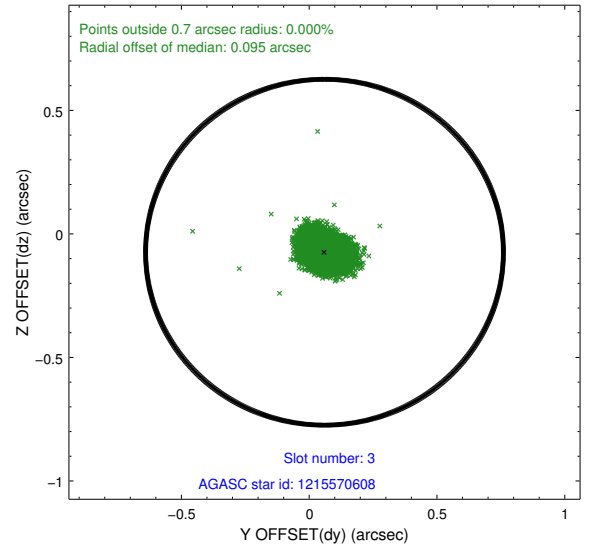
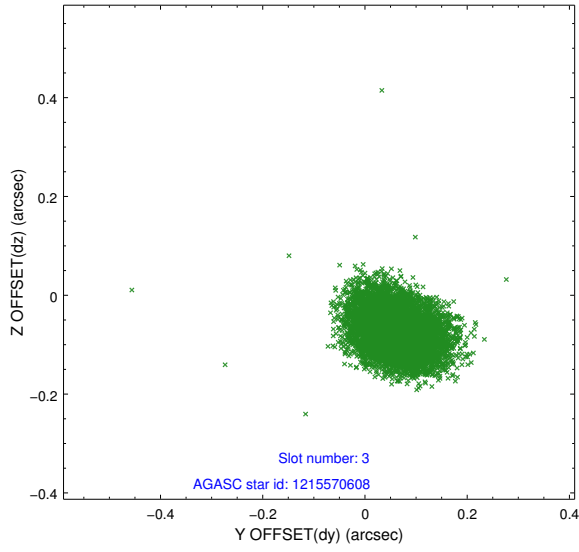


### Slot Statistics

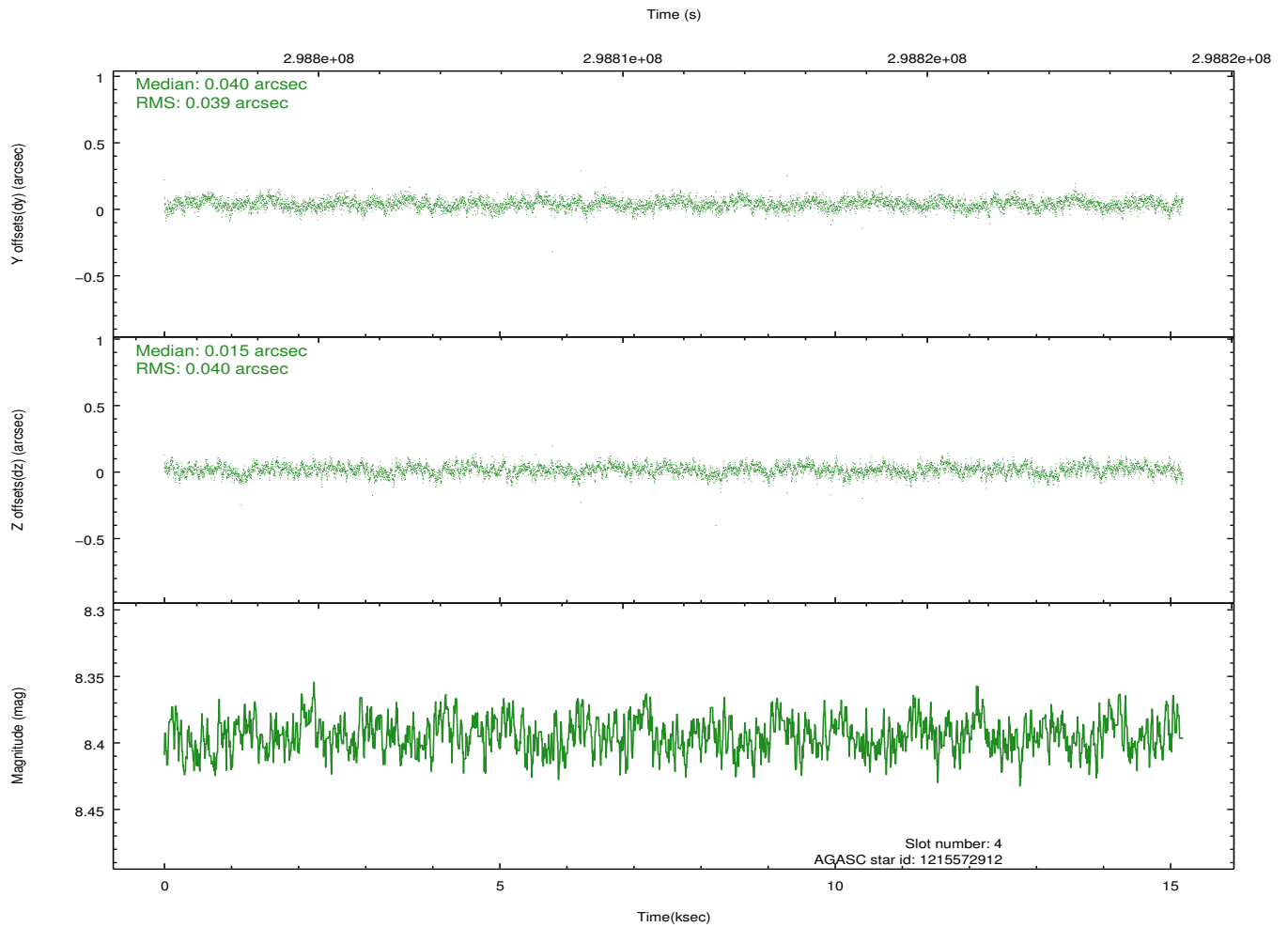
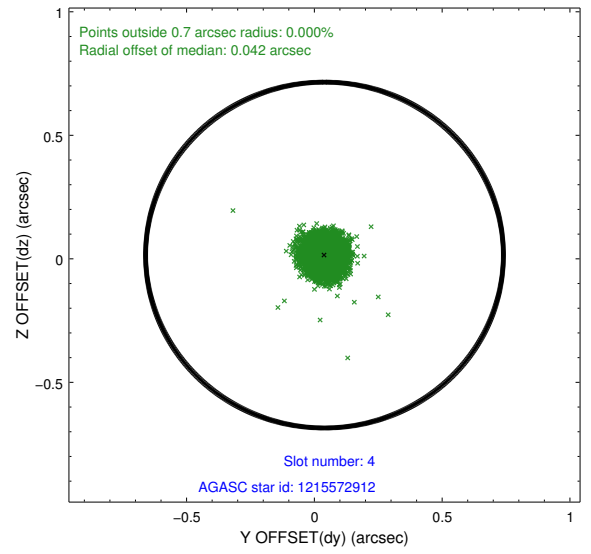
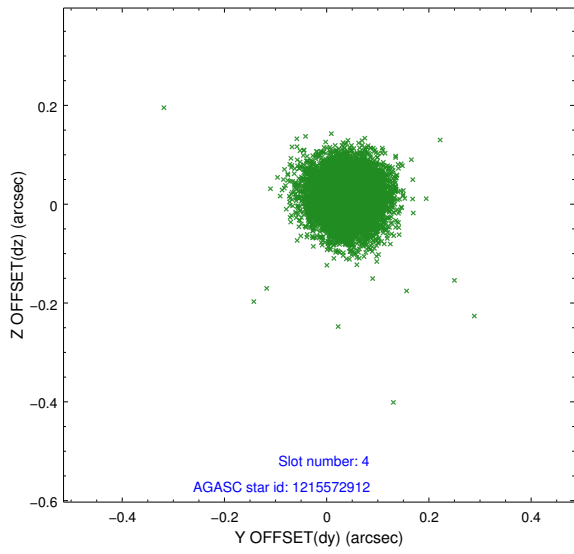
slot	status	id	mag	n_pts	med_dy	med_dz	dr1	dr2	ra	dec	mean_y	mean_z
0	FID	ACIS-S-2	7.09	3704	-0.103	-0.045	0.007	0.012	0.000000	0.000000	-767.78	-1736.41
1	FID	ACIS-S-4	7.19	3705	0.236	0.062	0.006	0.011	0.000000	0.000000	2145.69	171.89
2	FID	ACIS-S-5	7.22	3705	-0.164	-0.008	0.007	0.012	0.000000	0.000000	-1820.31	165.80
3	GUIDE	1215570608	7.71	7409	0.060	-0.074	0.064	0.105	249.675946	-68.720873	639.45	-786.98
4	GUIDE	1215572912	8.39	7407	0.040	0.015	0.059	0.095	250.345881	-68.759662	1490.88	-542.97
5	GUIDE	1215573984	9.05	7404	-0.097	0.094	0.082	0.138	250.199140	-69.072416	1790.76	-1644.90
6	GUIDE	1215570704	9.05	7407	0.038	0.042	0.113	0.173	247.542100	-68.760557	-1792.69	-2151.35
7	GUIDE	1215594112	6.88	7409	-0.053	-0.073	0.068	0.123	251.731449	-68.101965	2197.85	2367.03

## 2.4 Star Slots

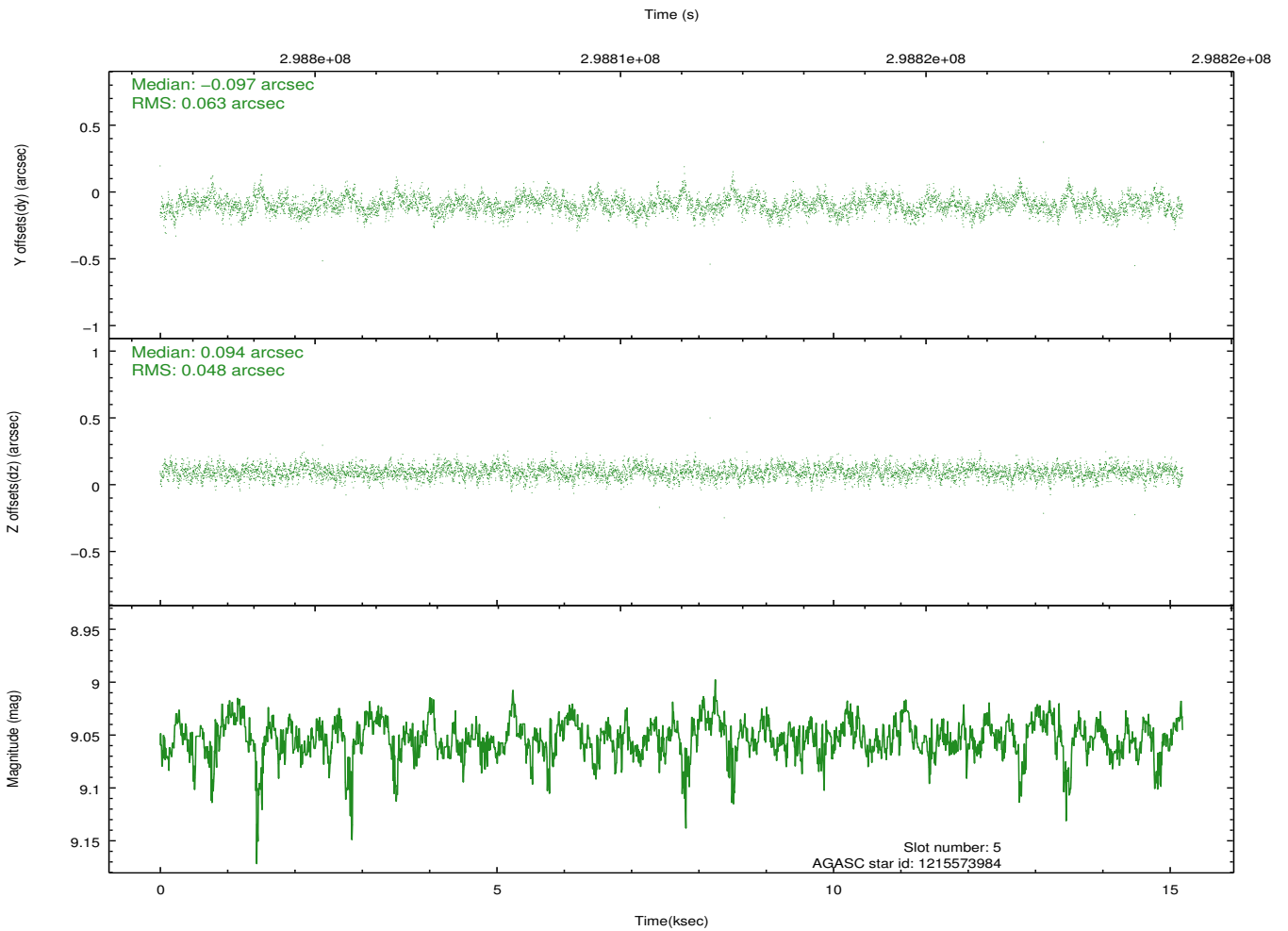
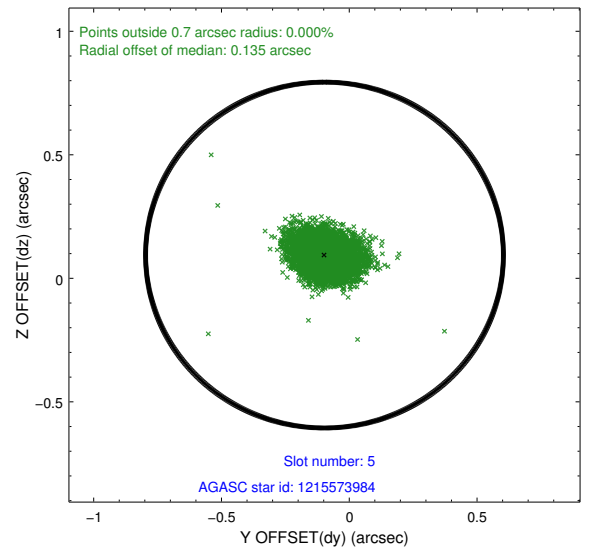
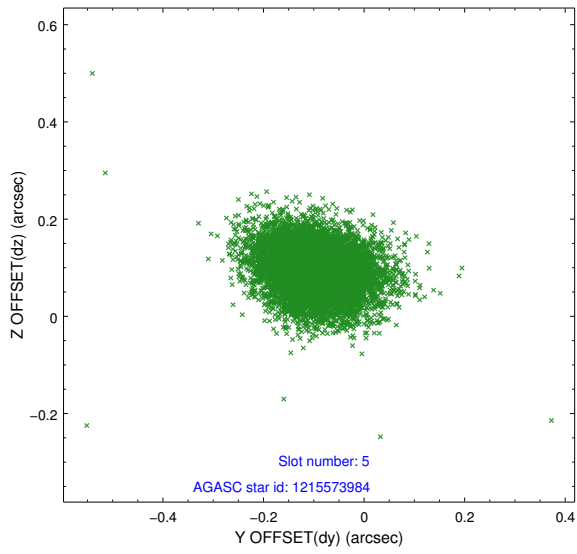
### 2.4.1 Slot 3



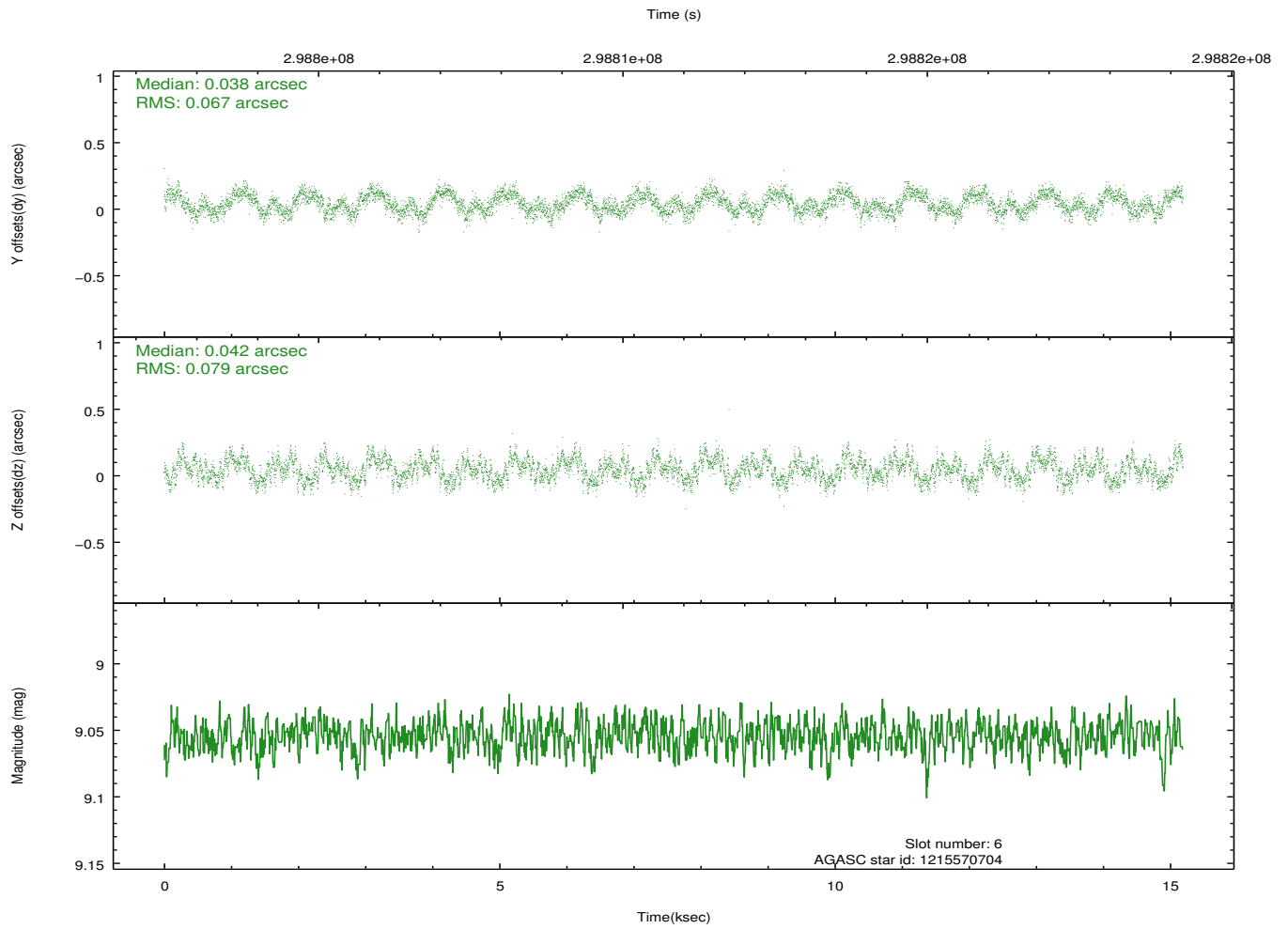
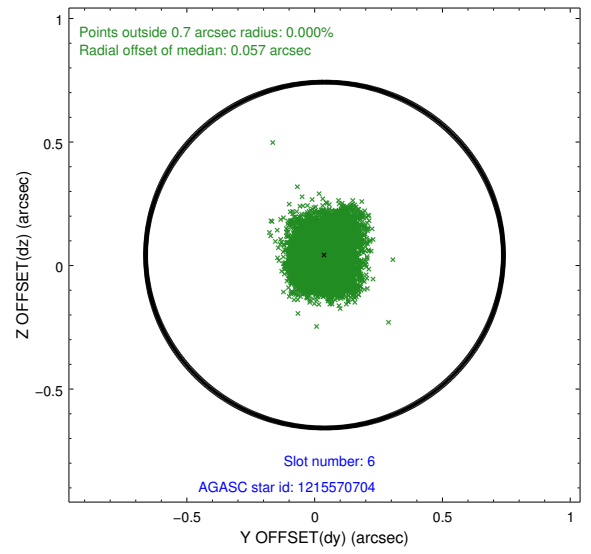
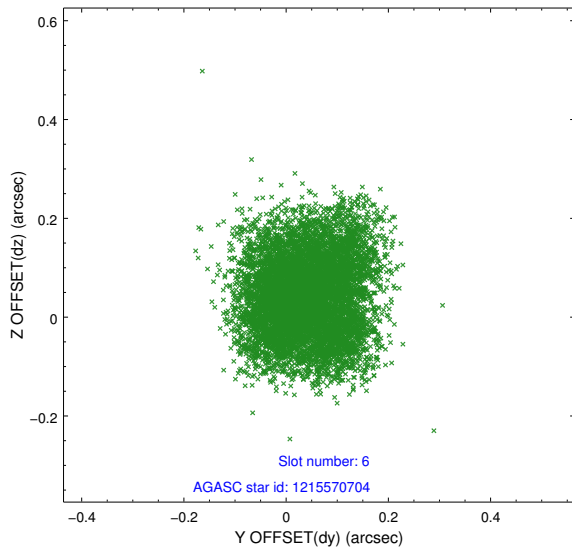
## 2.4.2 Slot 4



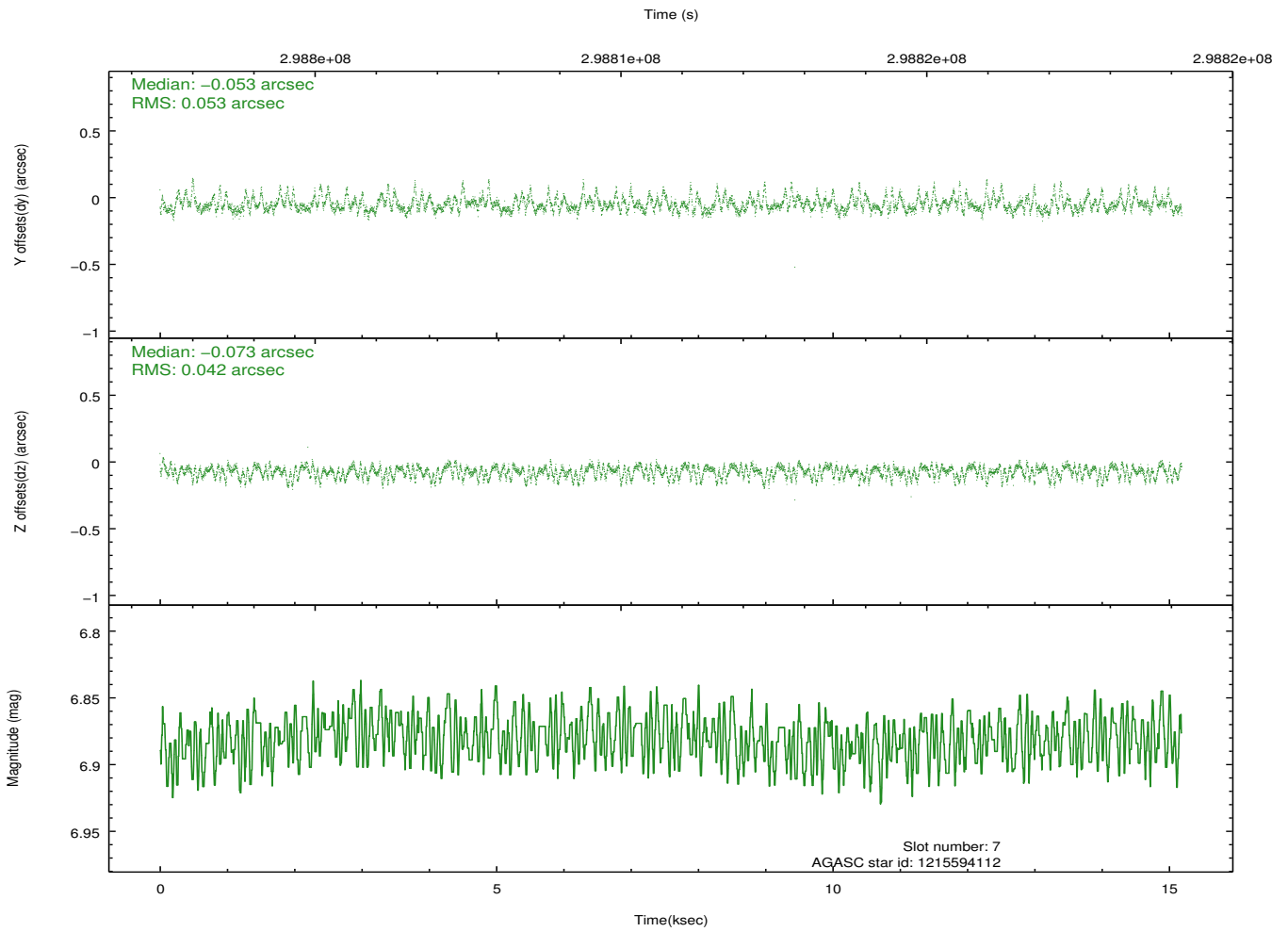
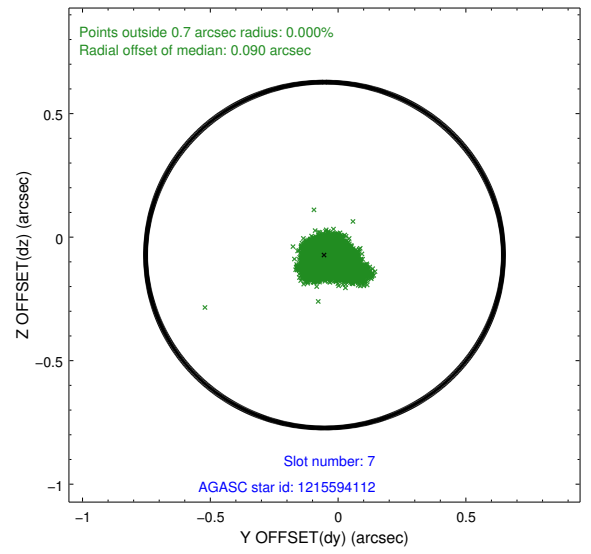
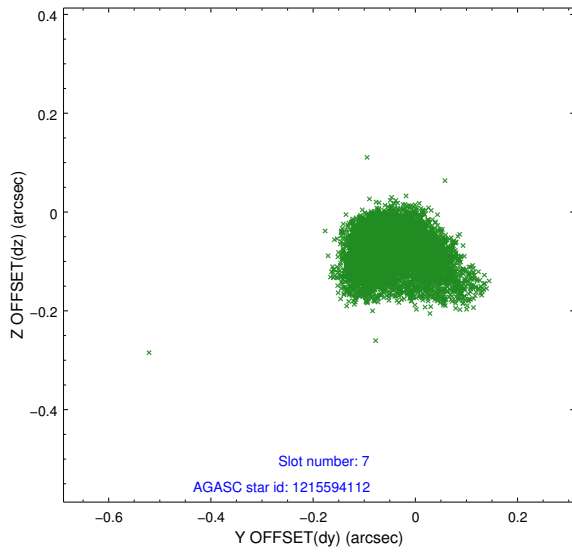
### 2.4.3 Slot 5



### 2.4.4 Slot 6

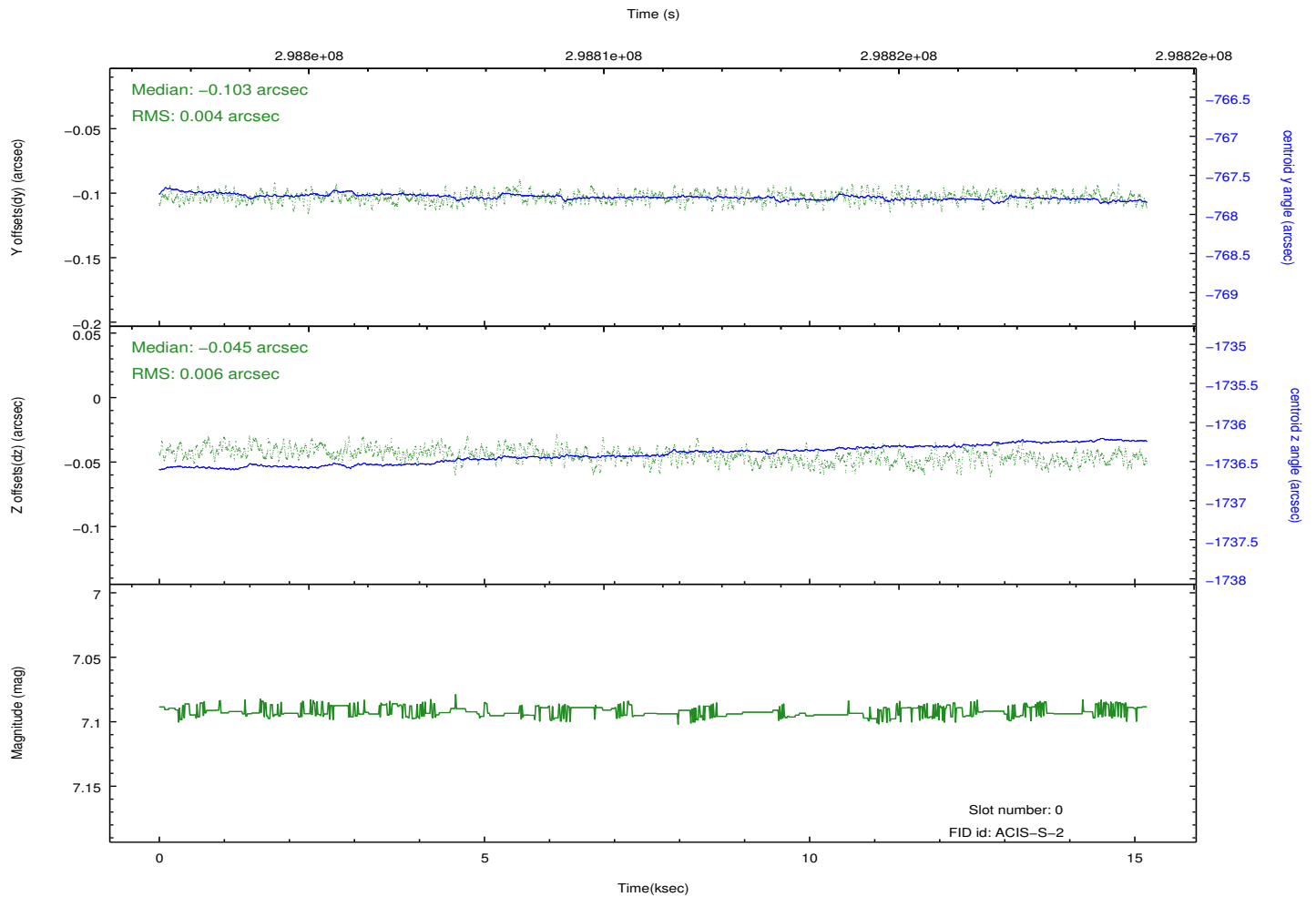
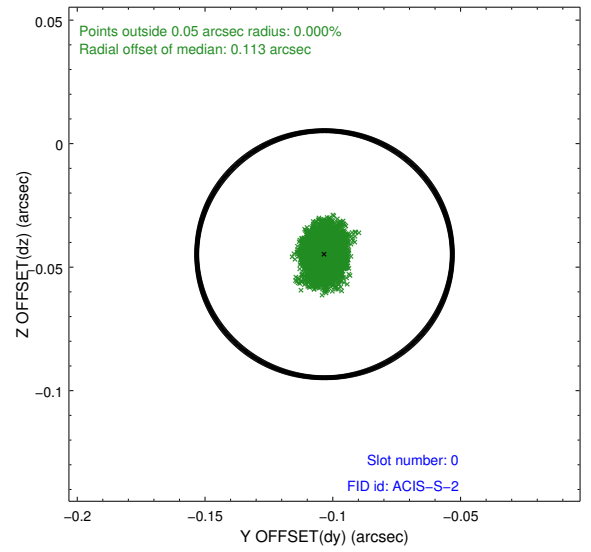
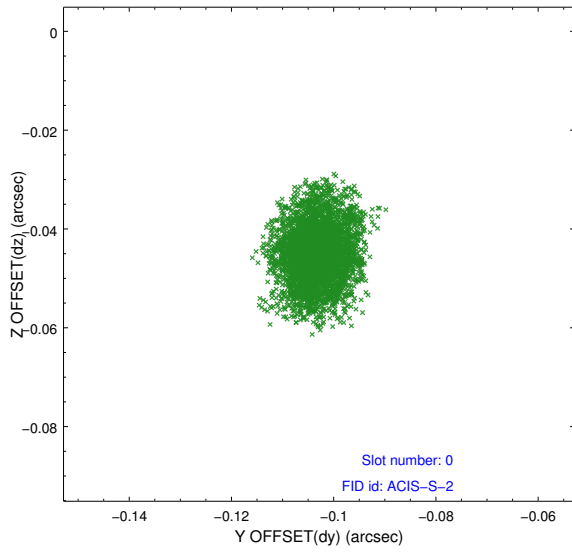


### 2.4.5 Slot 7

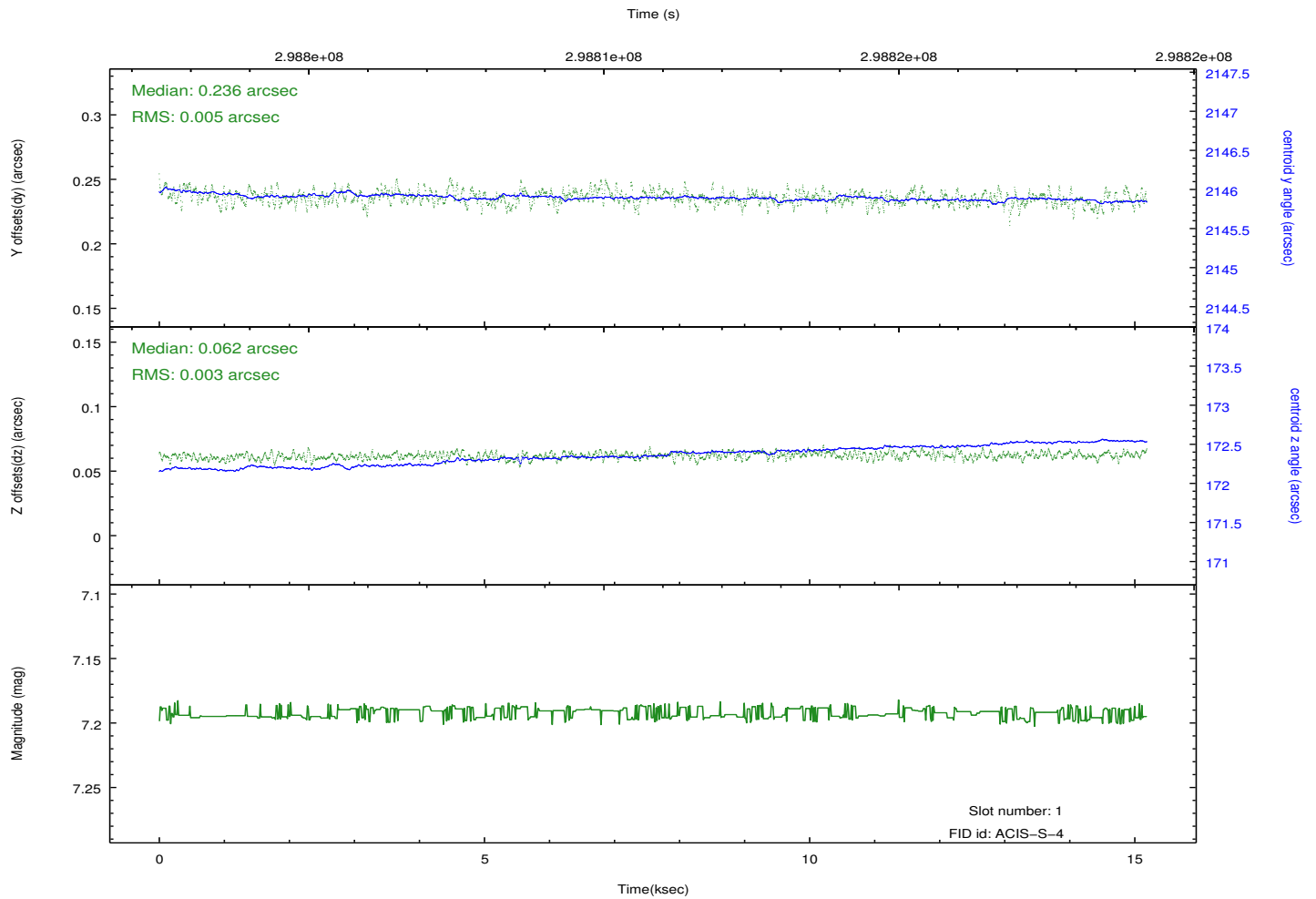
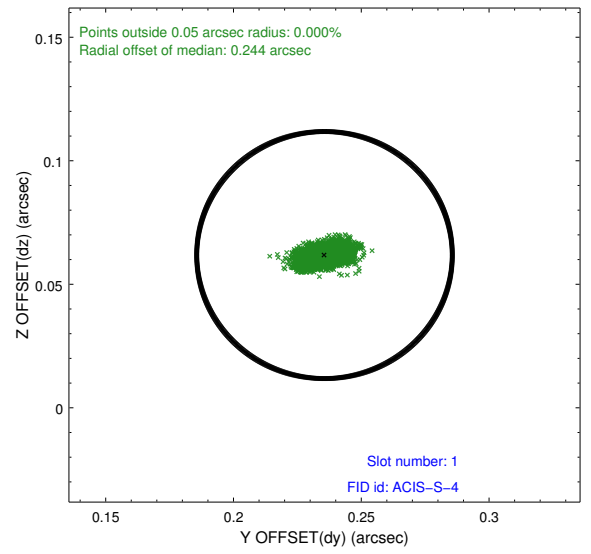
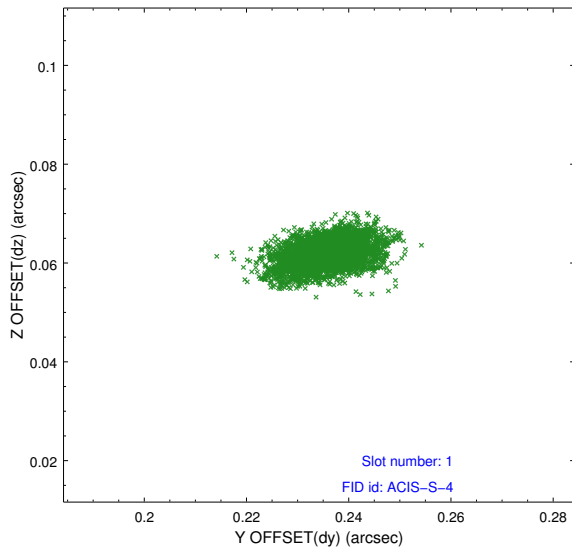


## 2.5 FID Slots

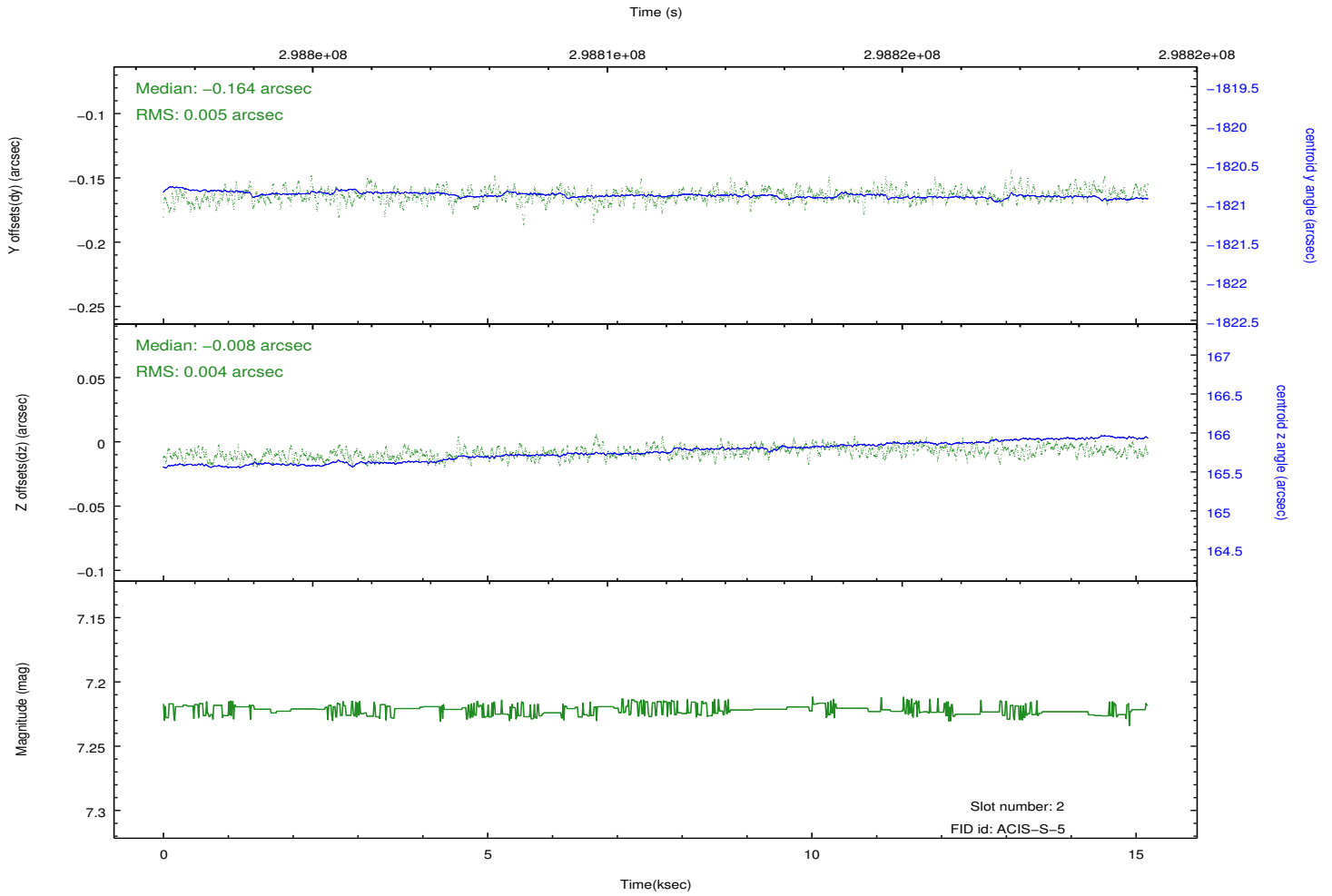
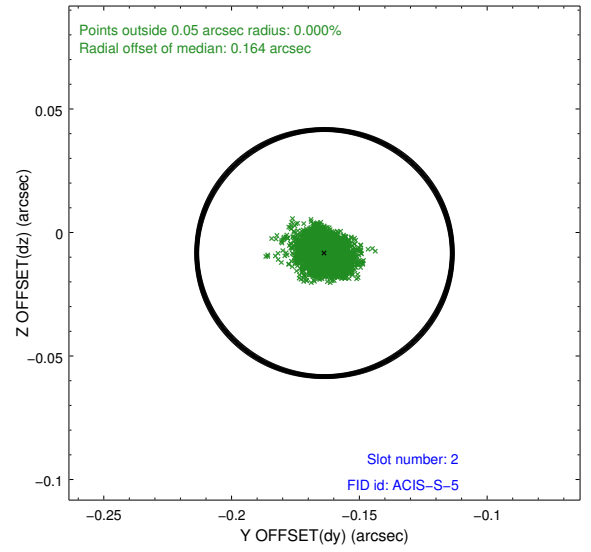
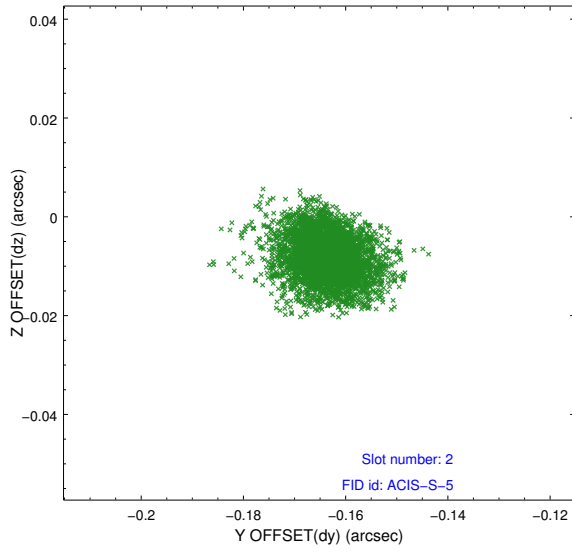
### 2.5.1 Slot 0



## 2.5.2 Slot 1



### 2.5.3 Slot 2



## **A Summary**

### **A.1 Status**

V&V Scientist	Jen Lauer
V&V Date (YYYY-MM-DD)	2012.04.27
V&V Edition	1
V&V Disposition and Status	OK
V&V Charge Time	14.7231999

### **A.2 Comments**