

# V&V Reference Report

## L2 ASCDS Version : 8.4.4

Observation 8923 - L2 Version 2  
Chandra X-Ray Center

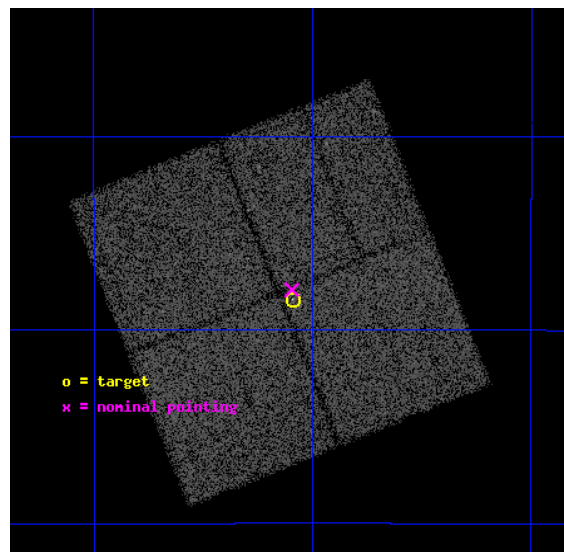
L2 Processing Date : May 11 2012

## Contents

<b>1</b>	<b>Front</b>	<b>2</b>
<b>2</b>	<b>OBI</b>	<b>3</b>
2.1	OBI . . . . .	3
2.1.1	Images . . . . .	3
2.1.2	Bias . . . . .	3
2.1.3	Parameters . . . . .	4
2.1.4	Events . . . . .	4
2.2	Compared Parameters . . . . .	5
2.3	Aspect . . . . .	6
2.4	Star Slots . . . . .	9
2.4.1	Slot 3 . . . . .	9
2.4.2	Slot 4 . . . . .	10
2.4.3	Slot 5 . . . . .	11
2.4.4	Slot 6 . . . . .	12
2.4.5	Slot 7 . . . . .	13
2.5	FID Slots . . . . .	14
2.5.1	Slot 0 . . . . .	14
2.5.2	Slot 1 . . . . .	15
2.5.3	Slot 2 . . . . .	16
<b>A</b>	<b>Summary</b>	<b>17</b>
A.1	Status . . . . .	17
A.2	Comments . . . . .	17

# 1 Front

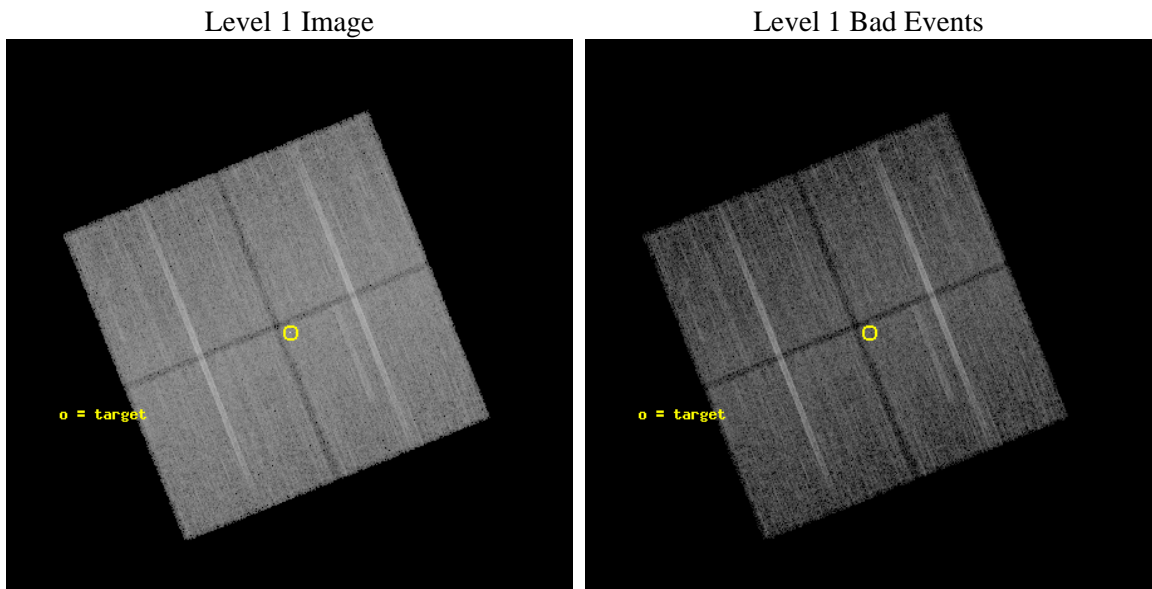
seq_num	200504	Sequence number
obs_id	8923	Observation id
title	ToO Studies with CXO of Pre-Main Sequence Stars Undergoing Optical Outbursts	Proposal title
observer	Professor David Weintraub	Principal investigator
object	EX Lupi	Source name
dtcycle	0	&#160
cycle	P	events from which exps? Prim/Second/Both
ra_targ	240.772917	Observer's specified target RA [deg]
dec_targ	-40.307	Observer's specified target Dec [deg]
ra_nom	240.77374954781	Nominal RA [deg]
dec_nom	-40.298913191229	Nominal Dec [deg]
roll_nom	68.110851910015	Nominal Roll [deg]
revision	2	Processing version of data
ontime	20055.602509439	Sum of GTIs [s]
livetime	19793.561297933	Livetime [s]
ontime0	20055.479389429	Sum of GTIs [s]
ontime1	20055.520429432	Sum of GTIs [s]
ontime2	20055.561469436	Sum of GTIs [s]
ontime3	20055.602509439	Sum of GTIs [s]
l2events	86082	Number of level 2 events



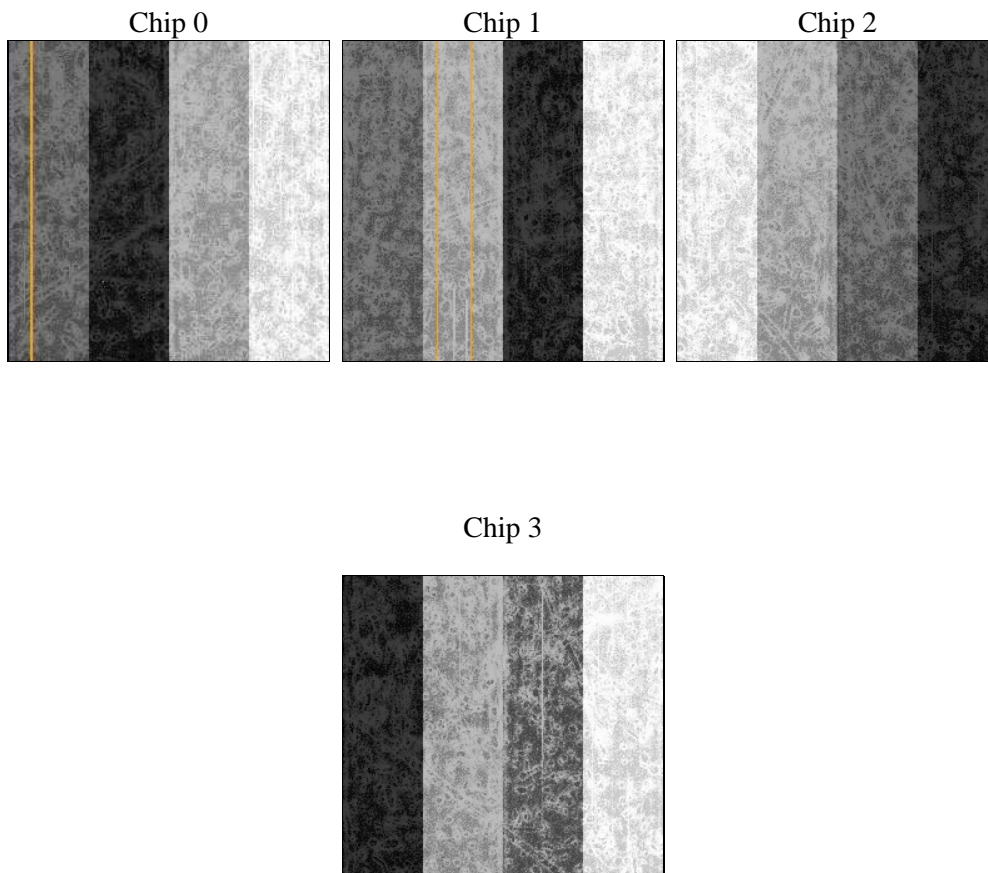
## 2 OBI

### 2.1 OBI

#### 2.1.1 Images



#### 2.1.2 Bias



### 2.1.3 Parameters

obi_num	0	Obi number	sched_exp_time	20000.000000	[s] Scheduled observation exposure time
ascdsver	8.4.4	Processing system revision	ontime	20055.602509439	Sum of GTIs [s]
caldsver	4.4.9	&#160	ontime0	20055.479389429	Sum of GTIs [s]
date	2012-05-12T01:03:31	Date and time of file creation	ontime1	20055.520429432	Sum of GTIs [s]
revision	2	Processing version of data	ontime2	20055.561469436	Sum of GTIs [s]
			ontime3	20055.602509439	Sum of GTIs [s]
			l1events	756323	Number of level 1 events

### 2.1.4 Events

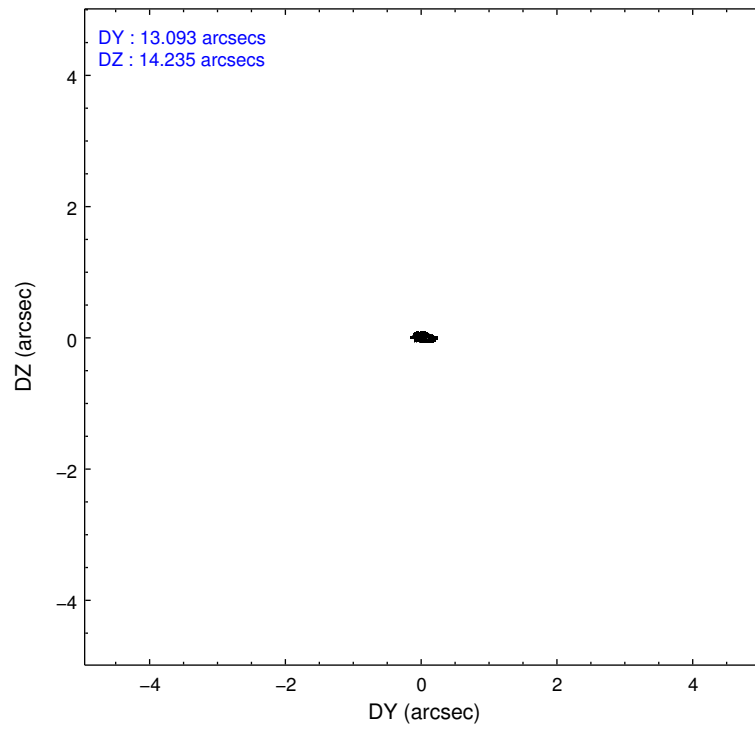
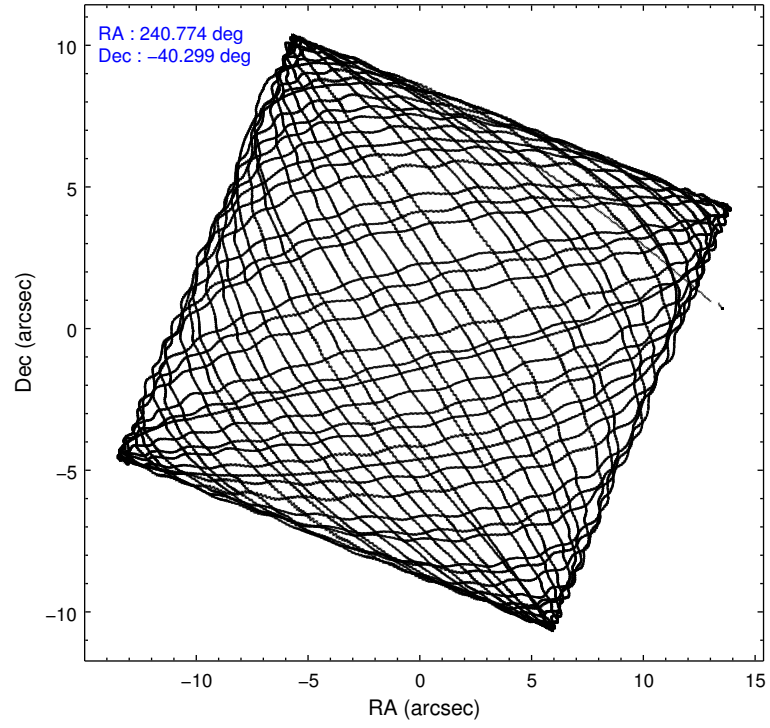
	ccd 0	ccd 1	ccd 2	ccd 3
level 1 events	180109	183888	195816	196510
rejected events	155505	157654	171519	171594
rejected %	86%	85%	87%	87%

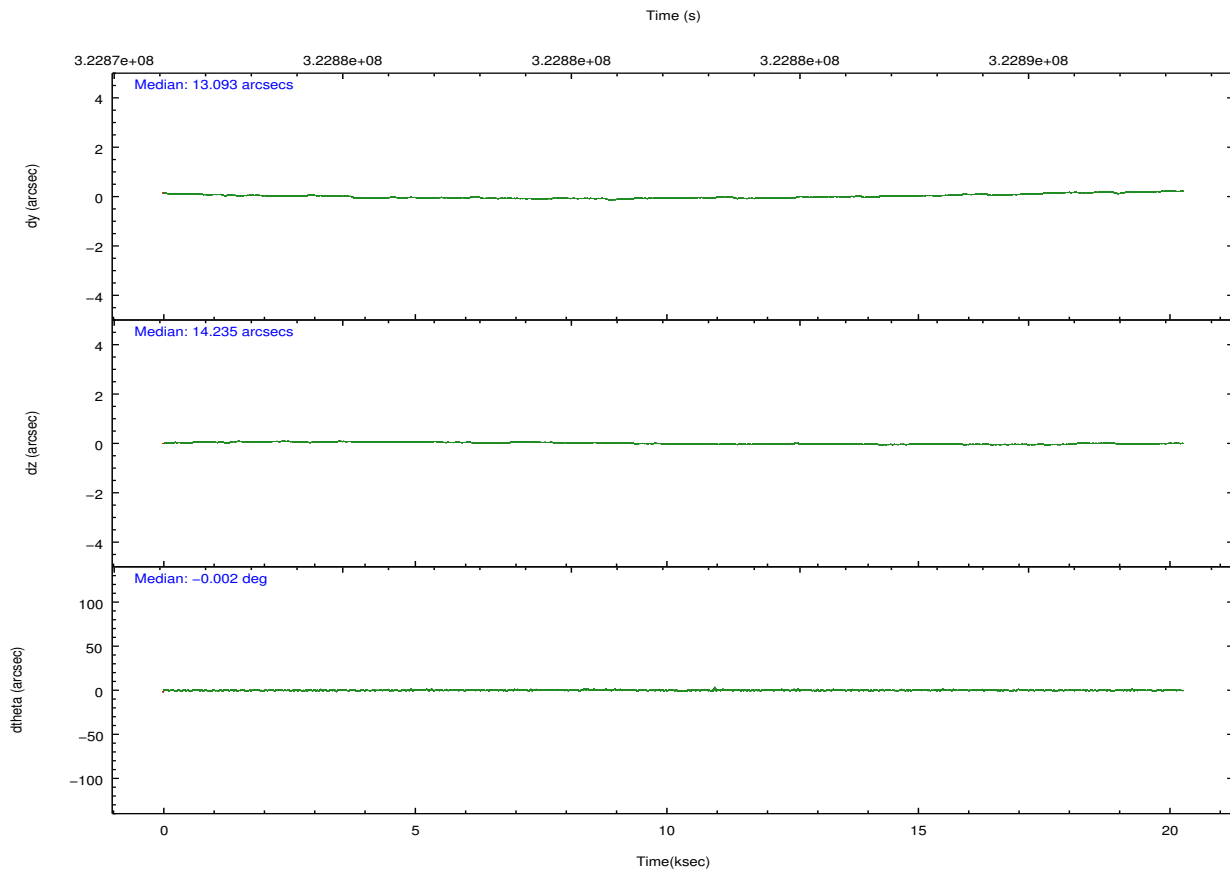
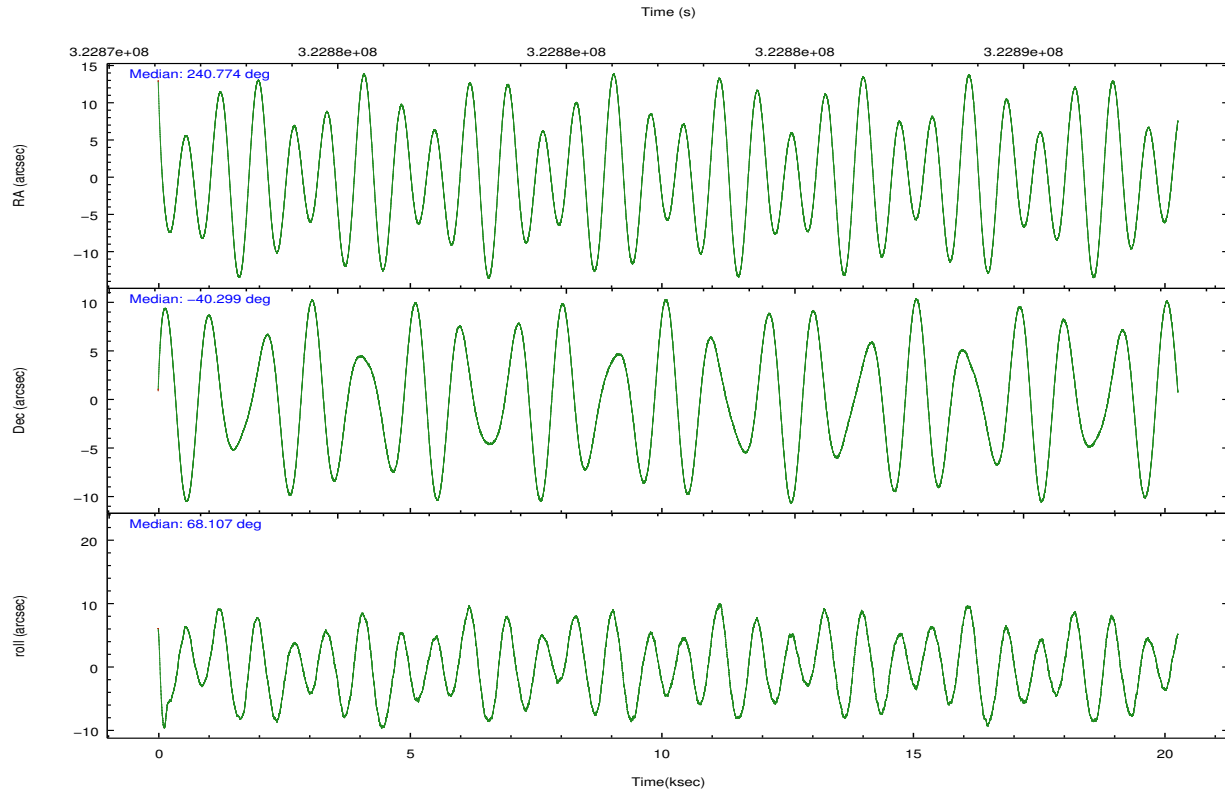
	ccd 0	ccd 1	ccd 2	ccd 3
grade 0 events	10606	10334	10817	11348
	5%	5%	5%	5%
grade 1 events	102	100	116	168
	0%	0%	0%	0%
grade 2 events	5503	5981	5139	4769
	3%	3%	2%	2%
grade 3 events	2208	2395	2145	2288
	1%	1%	1%	1%
grade 4 events	2124	2490	2191	2304
	1%	1%	1%	1%
grade 5 events	8064	8705	8159	9272
	4%	4%	4%	4%
grade 6 events	4174	5041	4012	4213
	2%	2%	2%	2%
grade 7 events	147328	148842	163237	162148
	81%	80%	83%	82%

## 2.2 Compared Parameters

Parameter	Planned	Actual	Parameter	Planned	Actual
Instrument	ACIS	ACIS	Obspar format version number	7	7
Detector	ACIS-0123	ACIS-0123	Obspar file type	PREDICTED	ACTUAL
Grating	NONE	NONE	Obspar update status	NONE	UPDATED
Data mode	FAINT	FAINT	Number of optional ACIS chips dropped	0	0
Observation mode	POINTING	POINTING	On-chip summing requested	N	N
[deg] Pointing RA	240.779002	240.7737495478139	Subarray requested	NONE	NONE
[deg] Pointing Dec	-40.326156	-40.2989131912293	Alternating exposures requested	N	N
[deg] Pointing Roll	67.905562	68.11085191001472	[s] Primary exposure time	0.000000	3.1
[mm] SIM focus pos	-0.782348	-0.7809083437167272			
[mm] SIM defocus	0	0.001439871863259334			
[mm] SIM translation stage pos	-233.592463	-233.5874344608287			
[mm] SIM translation stage offset	0	-0.005018542100998502			
[s] Observation start time (MET)	322872355.184000	322871443.25906			
Observation start date	2008-03-25T22:44:50	2008-03-25T22:30:43			
[s] Observation end time (MET)	322892355.184000	322893667.82264			
Observation end date	2008-03-26T04:18:10	2008-03-26T04:41:07			
Read mode	TIMED	TIMED			

## 2.3 Aspect





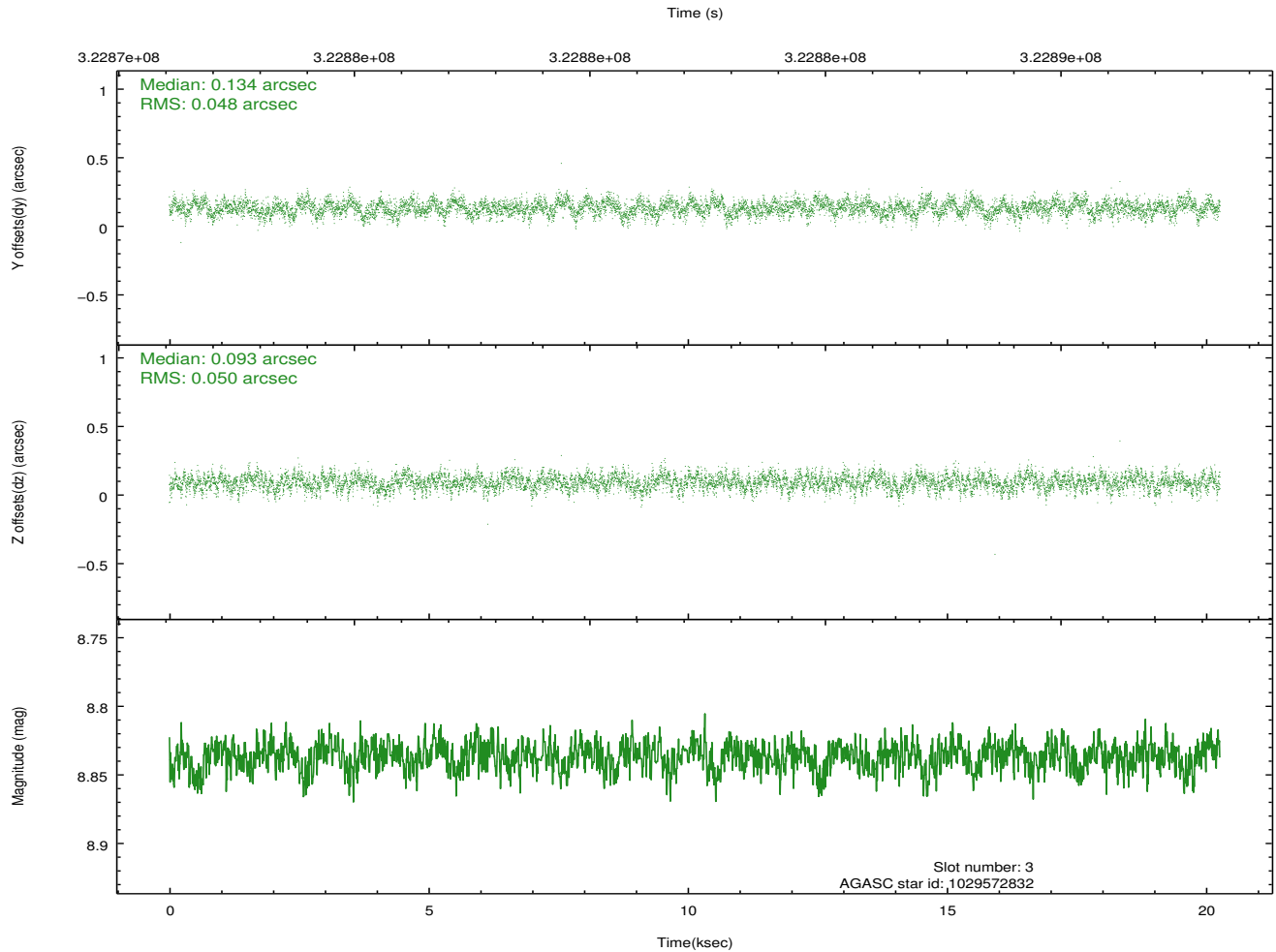
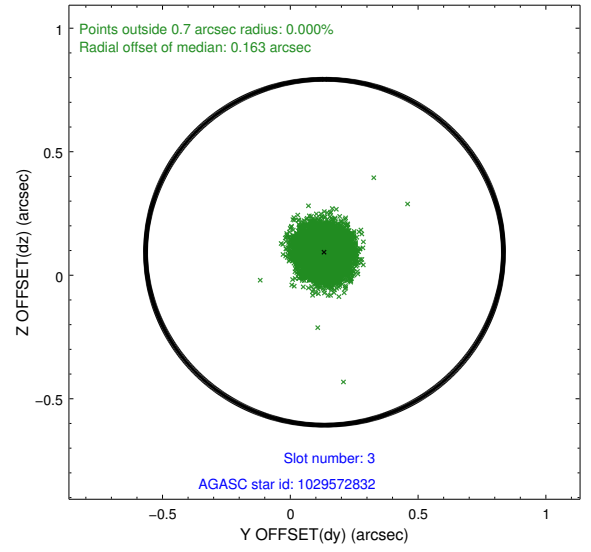
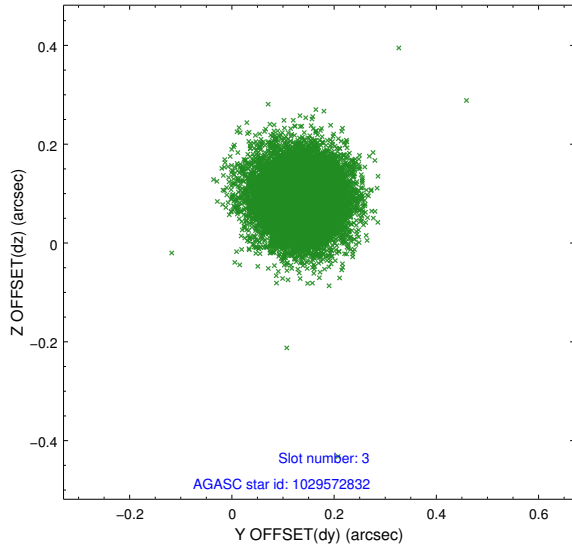
### Slot Statistics

slot	status	id	mag	n_pts	med_dy	med_dz	dr1	dr2	ra	dec	mean_y	mean_z
0	FID	ACIS-I-1	7.23	4945	0.020	0.021	0.007	0.012	0.000000	0.000000	926.43	-837.79
1	FID	ACIS-I-5	7.22	4945	-0.189	0.035	0.008	0.012	0.000000	0.000000	-1821.80	1059.60
2	FID	ACIS-I-6	7.23	4945	0.079	0.014	0.007	0.012	0.000000	0.000000	391.81	1704.30
3	GUIDE	1029572832	8.84	9884	0.134	0.093	0.074	0.120	240.911636	-41.020487	-2180.36	-1274.11
4	GUIDE	1029573264	8.47	9886	-0.112	0.058	0.063	0.100	241.313581	-40.319539	569.87	-1352.22
5	GUIDE	1029575760	7.99	9886	0.077	0.068	0.086	0.135	241.064770	-40.844631	-1437.73	-1423.71
6	GUIDE	1029578000	7.73	9883	0.077	0.104	0.058	0.094	241.211449	-40.737672	-931.48	-1651.31
7	GUIDE	1029576200	9.72	9865	-0.178	-0.326	0.131	0.213	240.164152	-39.881469	838.72	2173.44

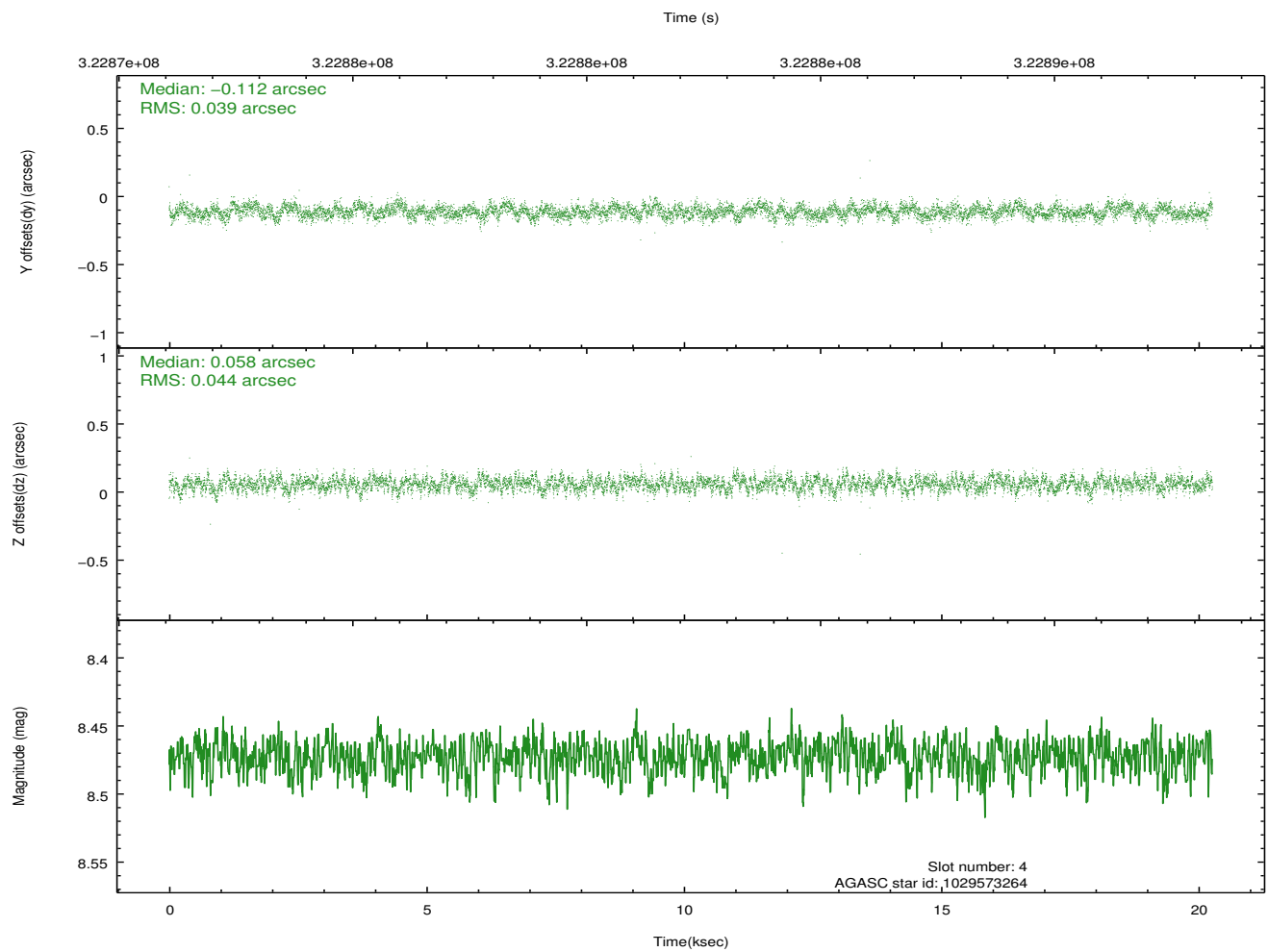
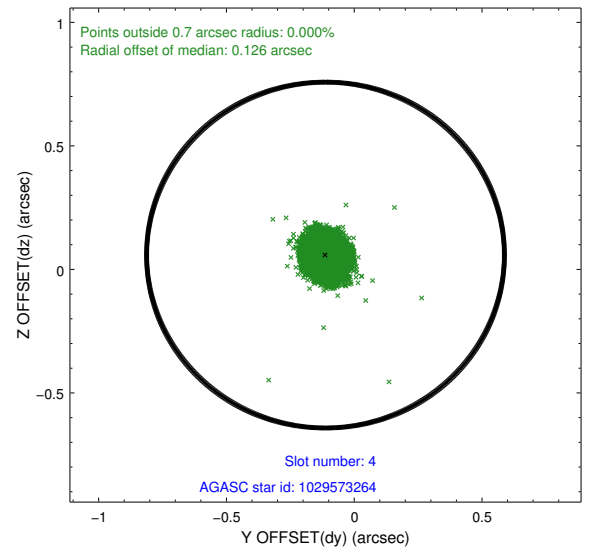
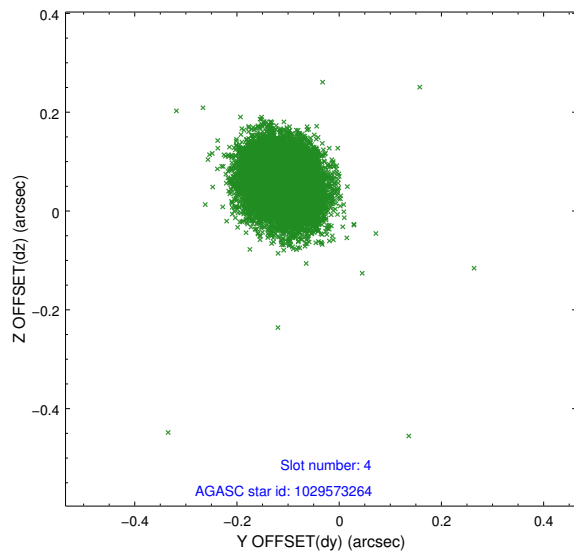
∞

## 2.4 Star Slots

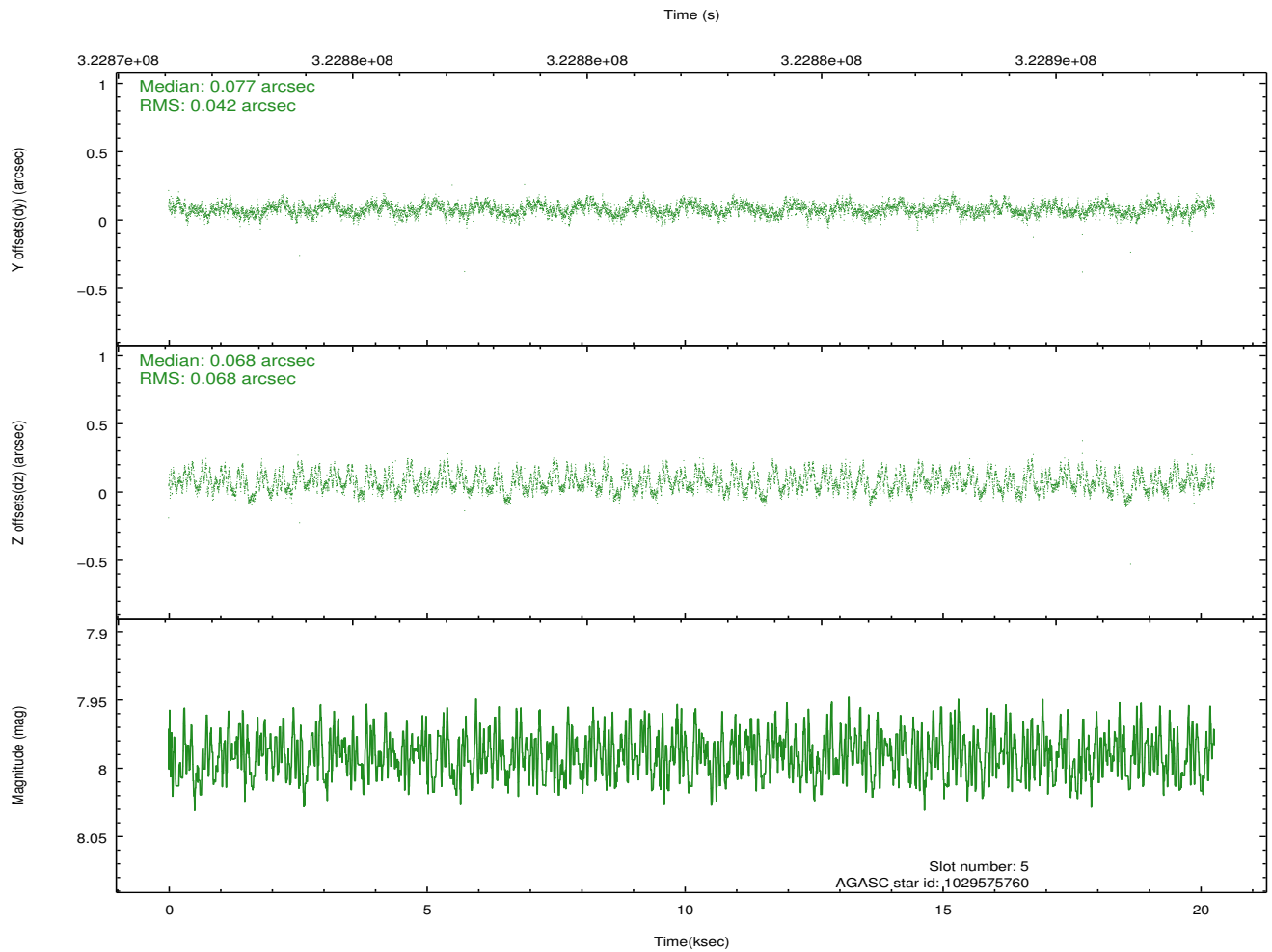
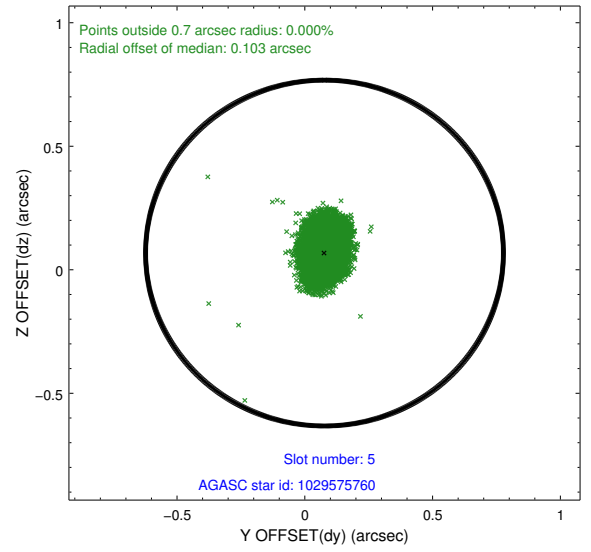
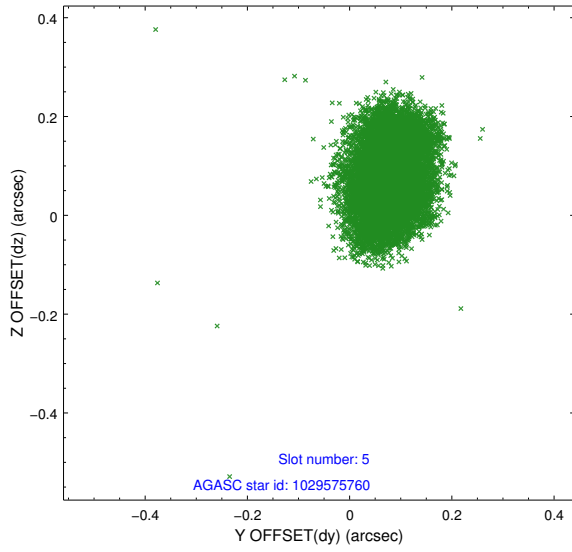
### 2.4.1 Slot 3



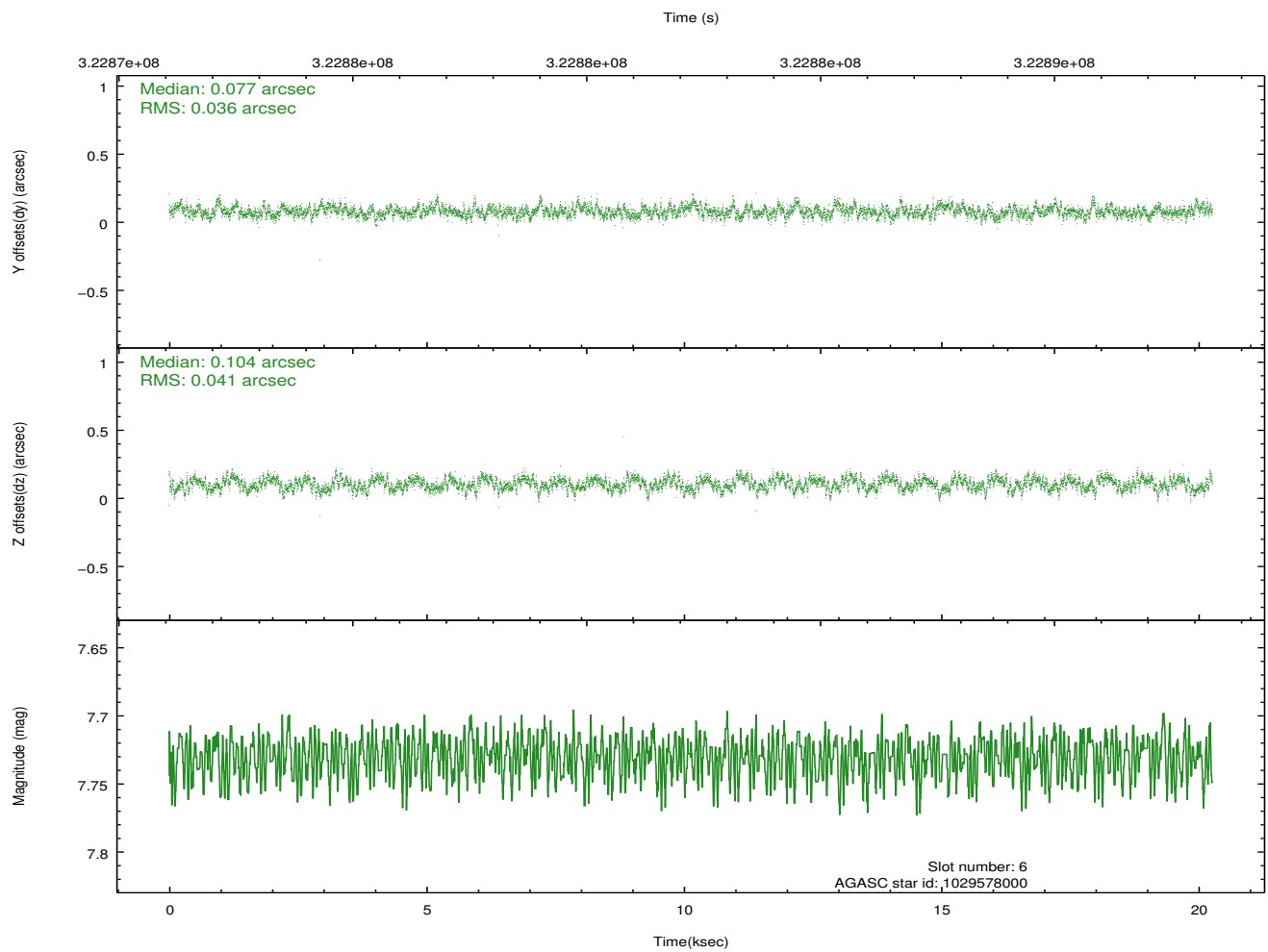
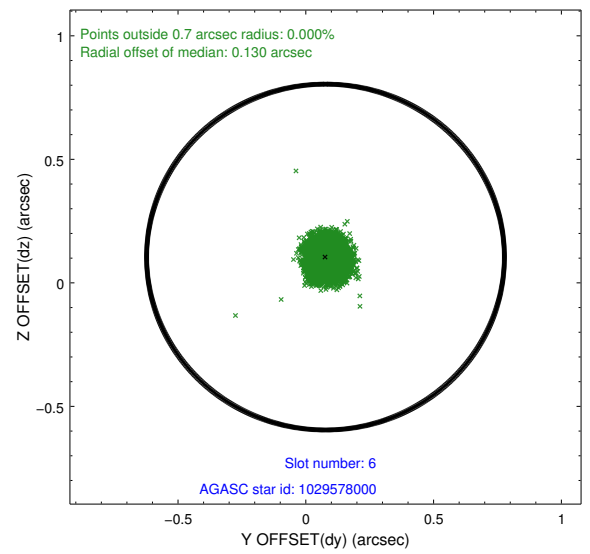
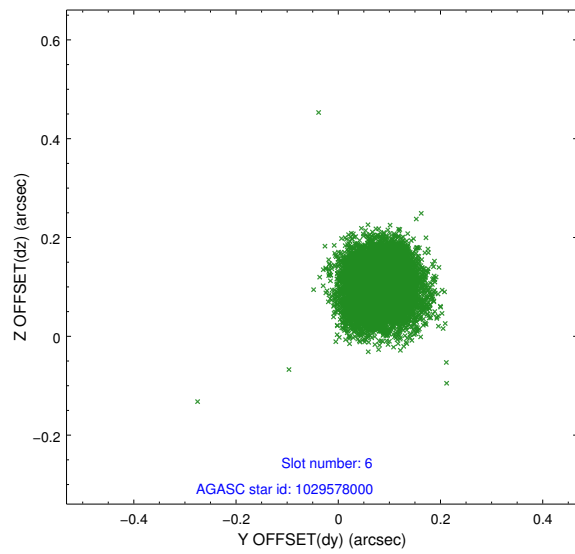
## 2.4.2 Slot 4



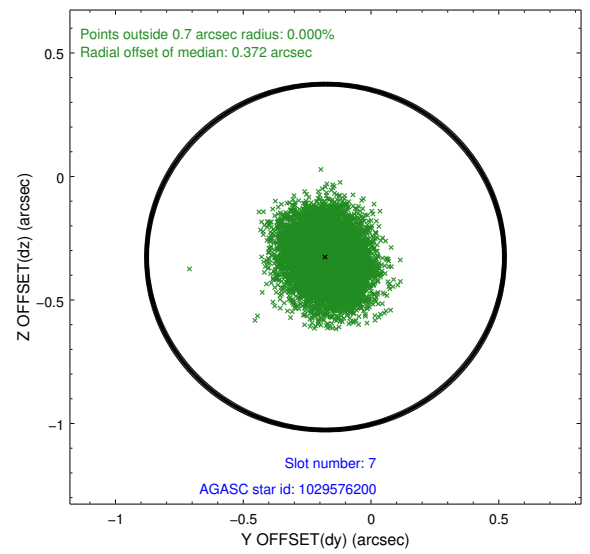
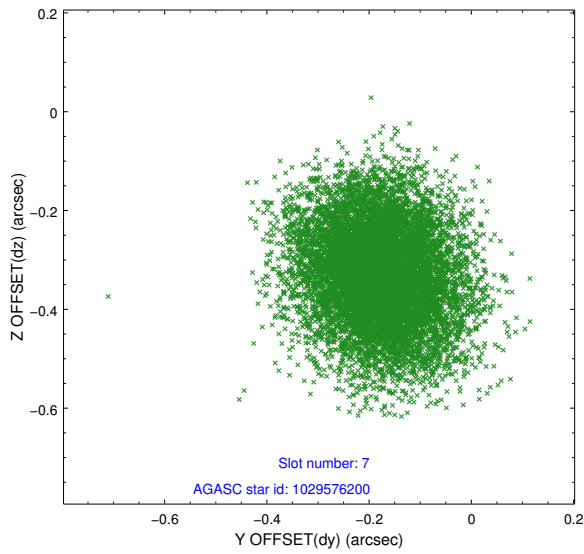
### 2.4.3 Slot 5



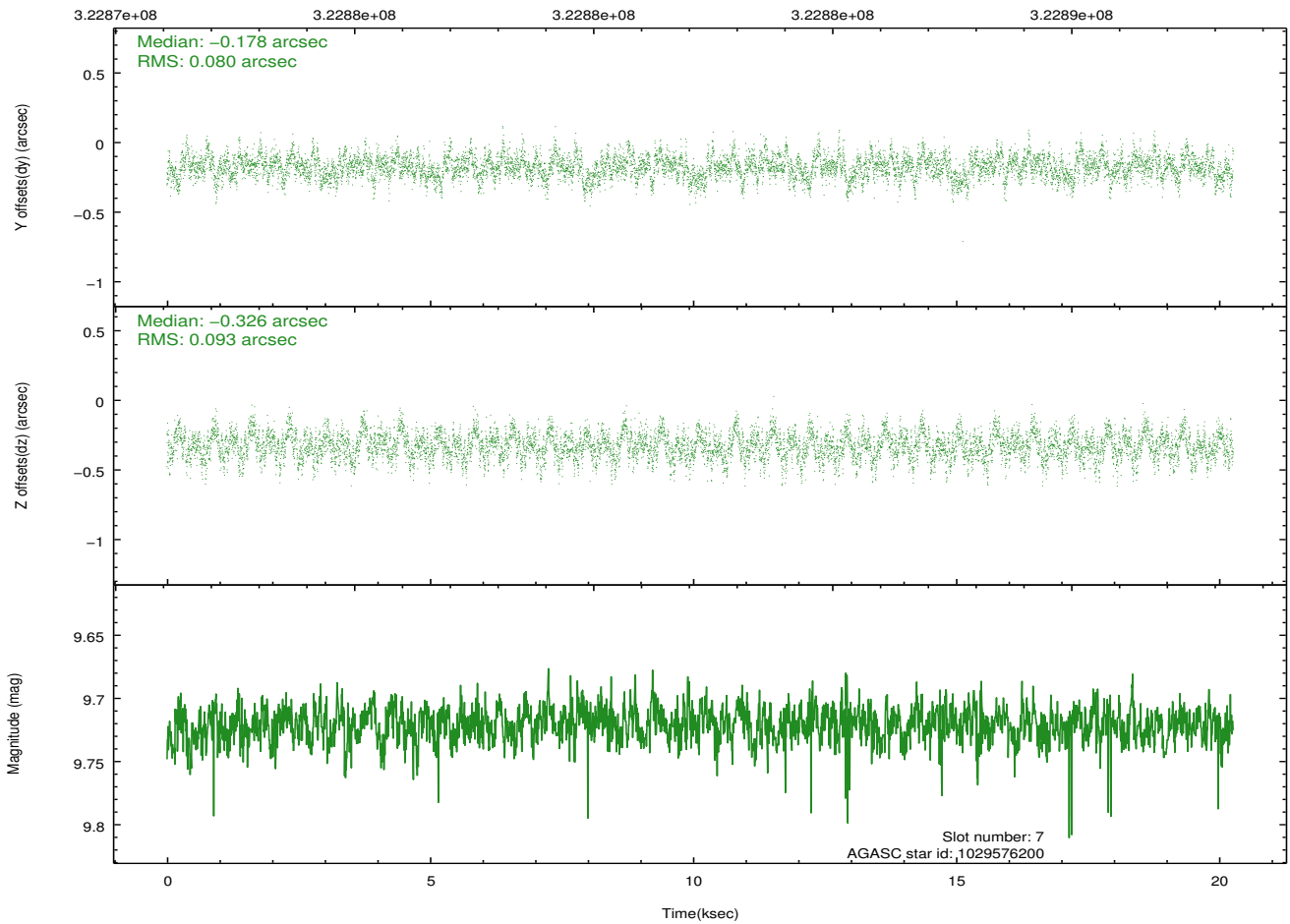
## 2.4.4 Slot 6



## 2.4.5 Slot 7

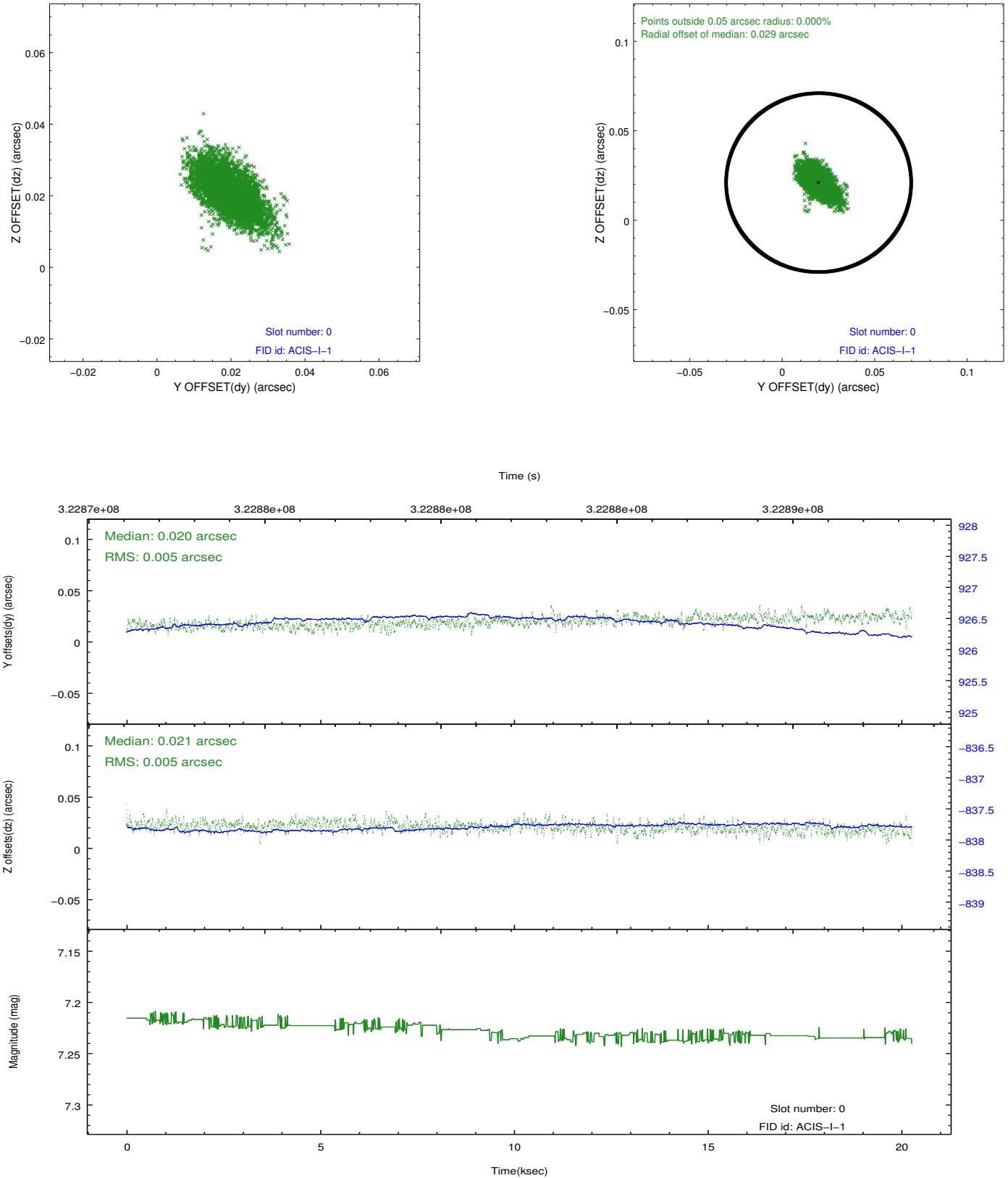


Time (s)

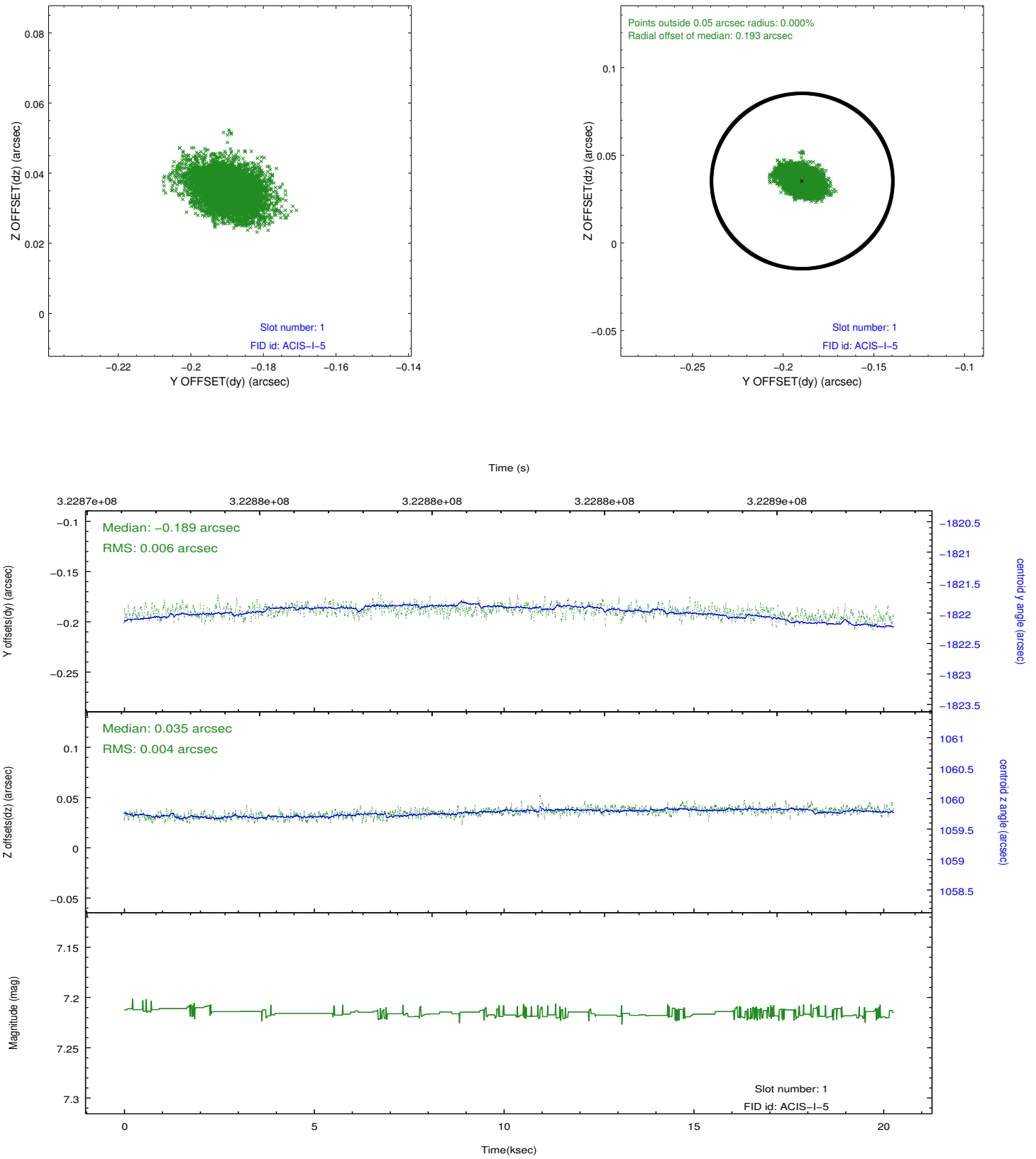


## 2.5 FID Slots

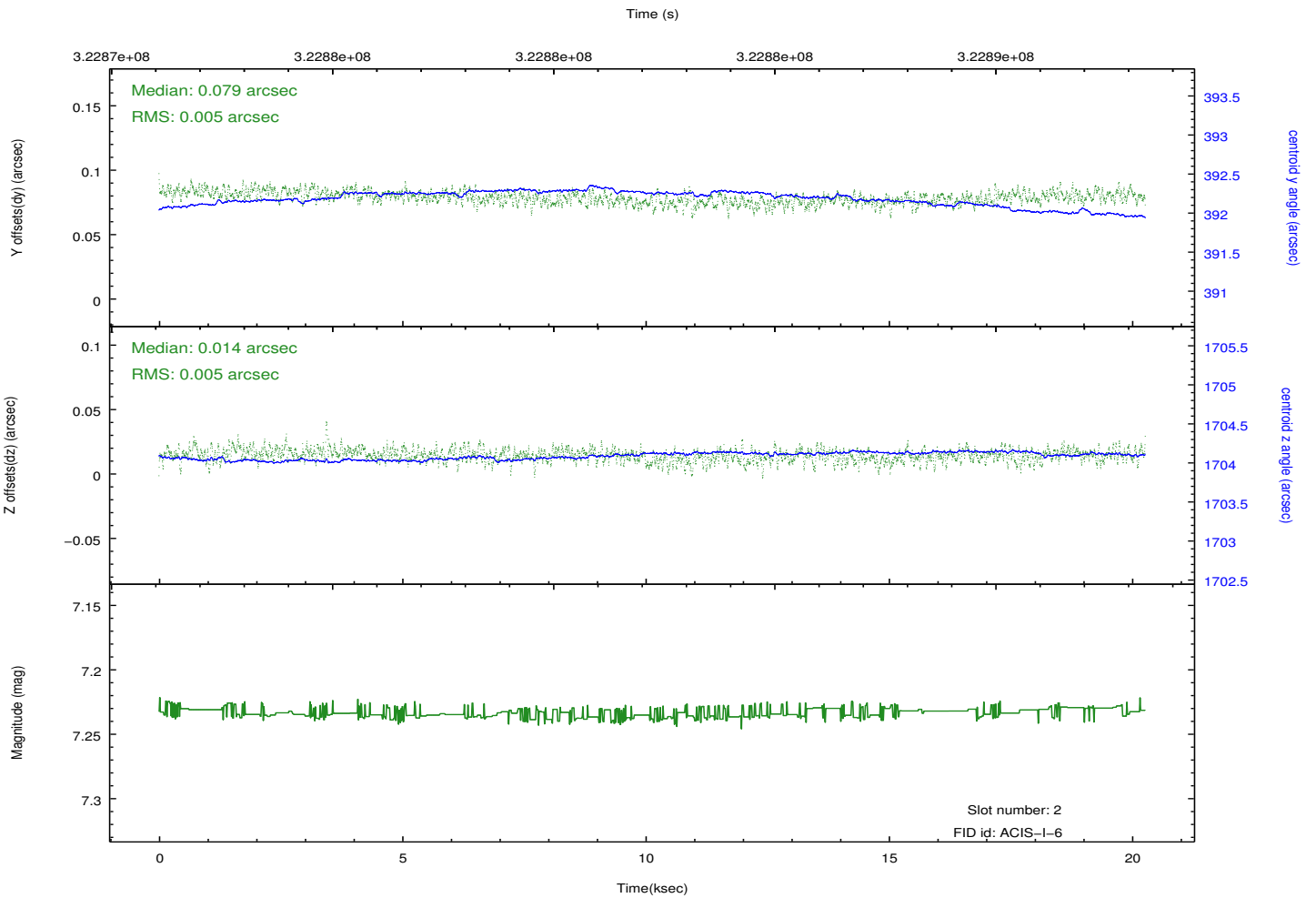
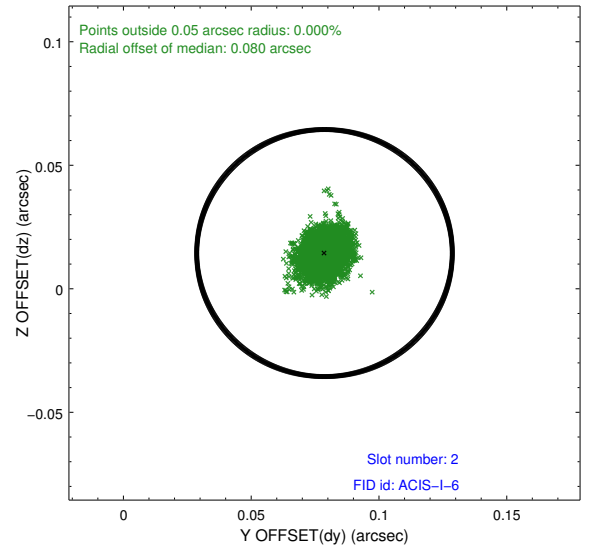
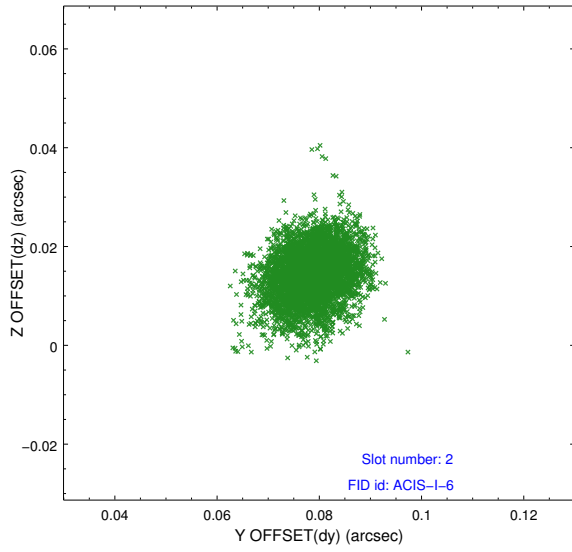
### 2.5.1 Slot 0



## 2.5.2 Slot 1



### 2.5.3 Slot 2



# A Summary

## A.1 Status

V&V Scientist	Jen Lauer
V&V Date (YYYY-MM-DD)	2012.05.14
V&V Edition	1
V&V Disposition and Status	OK
V&V Charge Time	20.0570001

## A.2 Comments