

V&V Reference Report

L2 ASCDS Version : 8.4.4

Observation 8933 - L2 Version 2
Chandra X-Ray Center

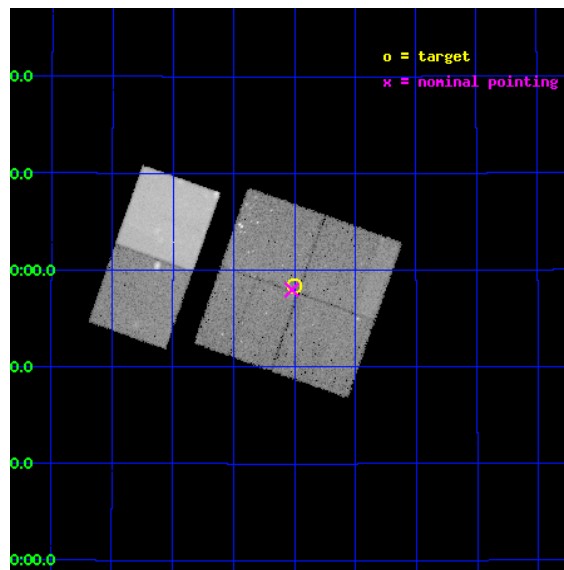
L2 Processing Date : May 11 2012

Contents

1	Front	2
2	OBI	3
2.1	OBI	3
2.1.1	Images	3
2.1.2	Bias	3
2.1.3	Parameters	4
2.1.4	Events	4
2.2	Compared Parameters	5
2.3	Aspect	6
2.4	Star Slots	9
2.4.1	Slot 3	9
2.4.2	Slot 4	10
2.4.3	Slot 5	11
2.4.4	Slot 6	12
2.4.5	Slot 7	13
2.5	FID Slots	14
2.5.1	Slot 0	14
2.5.2	Slot 1	15
2.5.3	Slot 2	16
A	Summary	17
A.1	Status	17
A.2	Comments	17

1 Front

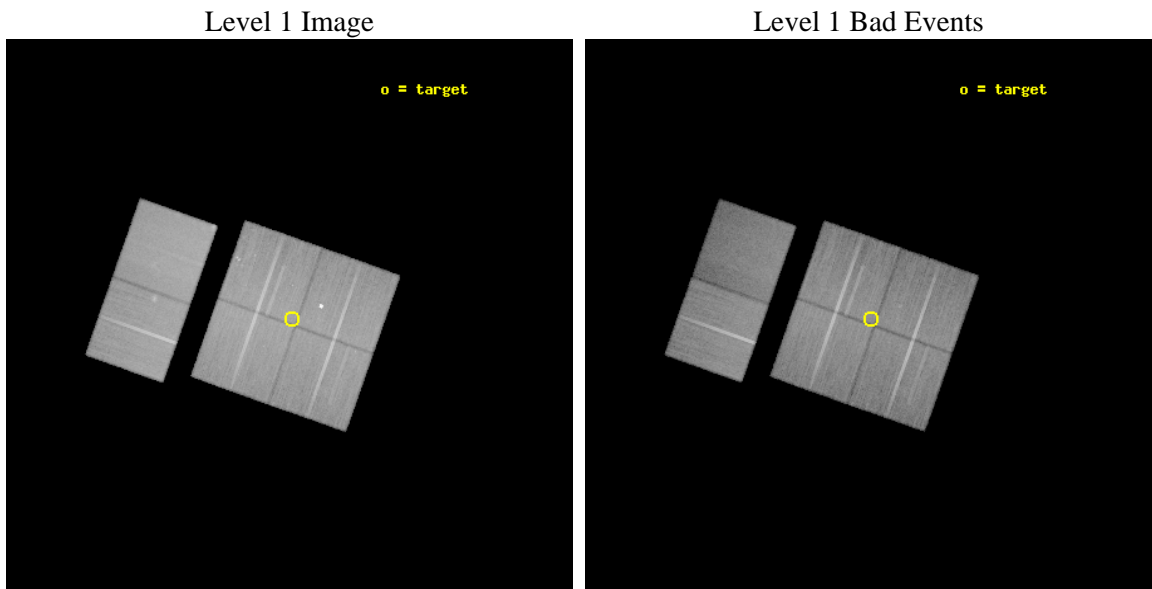
seq_num	200514	Sequence number
obs_id	8933	Observation id
title	X-ray and Radio Imaging of the Protostar Complex Adjacent to IC 348	
observer	Dr. Scott Wolk	Principal investigator
object	IC 348 - Southwest	Source name
dtcycle	0	
cycle	P	events from which exps? Prim/Second/Both
ra_targ	55.999583	Observer's specified target RA [deg]
dec_targ	31.972694	Observer's specified target Dec [deg]
ra_nom	56.005282025389	Nominal RA [deg]
dec_nom	31.966225690462	Nominal Dec [deg]
roll_nom	289.48185845075	Nominal Roll [deg]
revision	2	Processing version of data
ontime	40124.595118284	Sum of GTIs [s]
livetime	39616.513334766	Livetime [s]
ontime0	40131.076899827	Sum of GTIs [s]
ontime1	40131.076919615	Sum of GTIs [s]
ontime2	40137.558860362	Sum of GTIs [s]
ontime3	40124.595118284	Sum of GTIs [s]
ontime6	40140.799850523	Sum of GTIs [s]
ontime7	40140.799850523	Sum of GTIs [s]
l2events	299835	Number of level 2 events



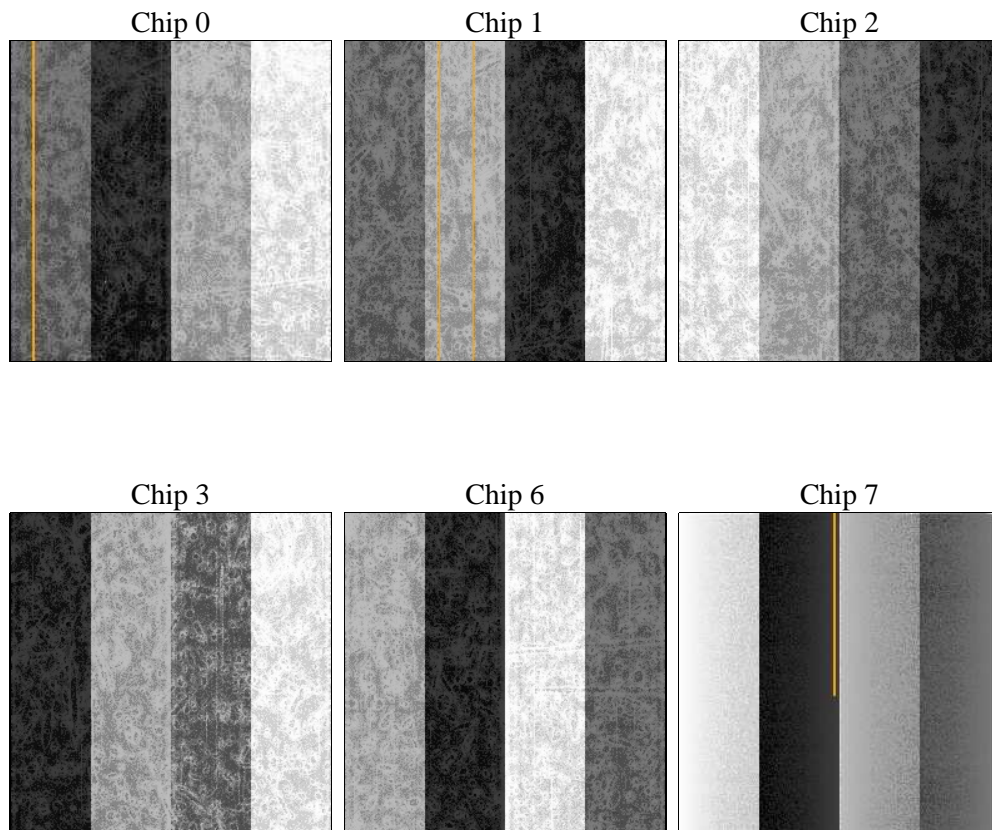
2 OBI

2.1 OBI

2.1.1 Images



2.1.2 Bias



2.1.3 Parameters

obi_num	0	Obi number	sched_exp_time	40000.000000	[s] Scheduled observation exposure time
ascdsver	8.4.4	Processing system revision	ontime	40124.595118284	Sum of GTIs [s]
caldbver	4.4.9	 	ontime0	40131.076899827	Sum of GTIs [s]
date	2012-05-11T13:47:59	Date and time of file creation	ontime1	40131.076919615	Sum of GTIs [s]
revision	2	Processing version of data	ontime2	40137.558860362	Sum of GTIs [s]
			ontime3	40124.595118284	Sum of GTIs [s]
			ontime6	40140.799850523	Sum of GTIs [s]
			ontime7	40140.799850523	Sum of GTIs [s]
			l1events	1955248	Number of level 1 events

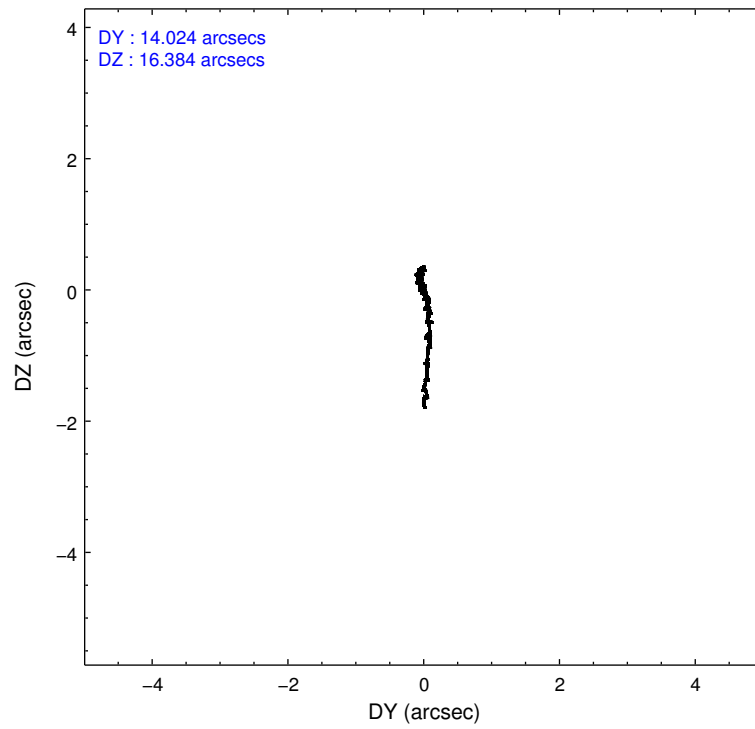
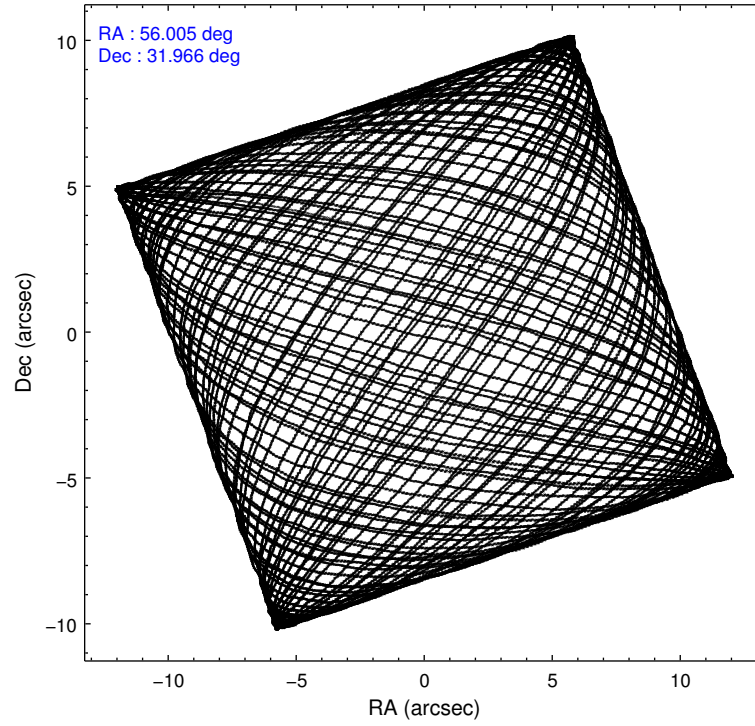
2.1.4 Events

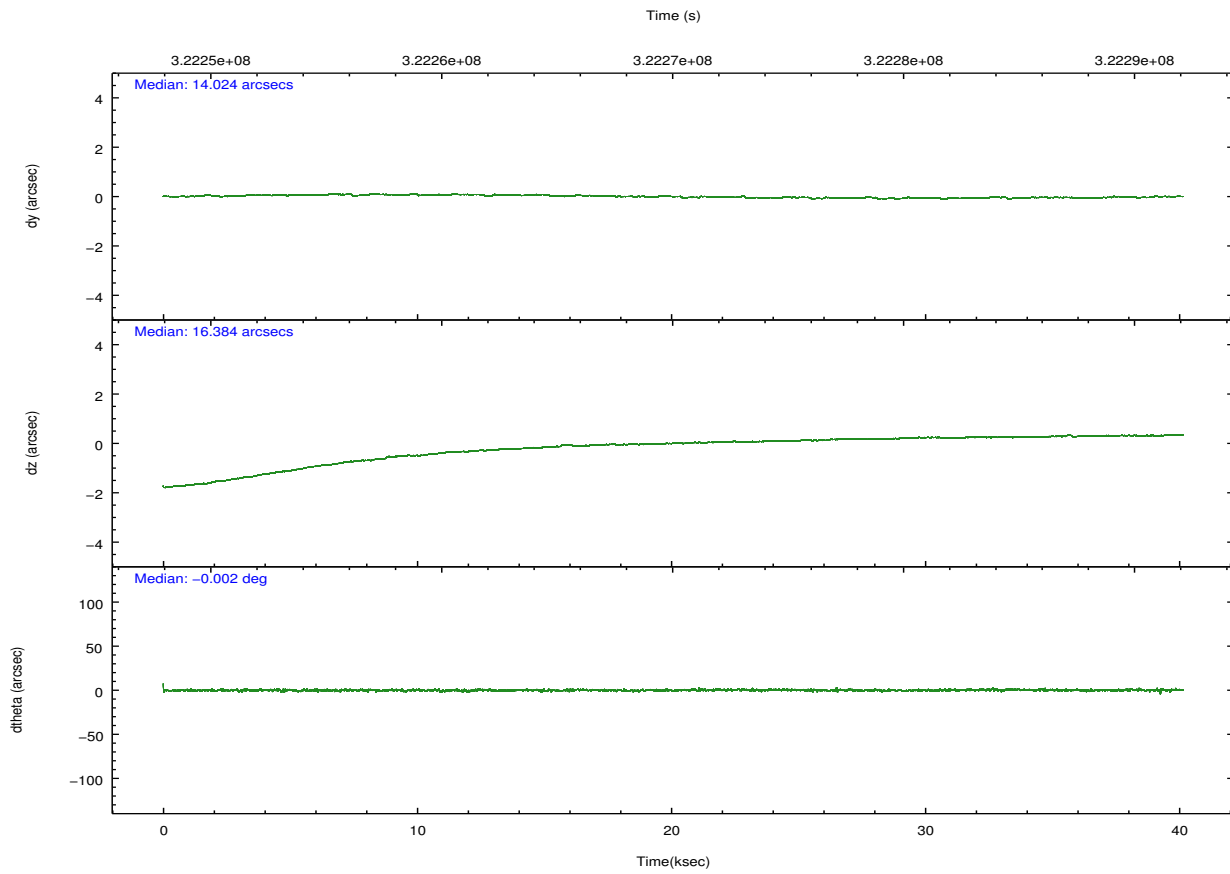
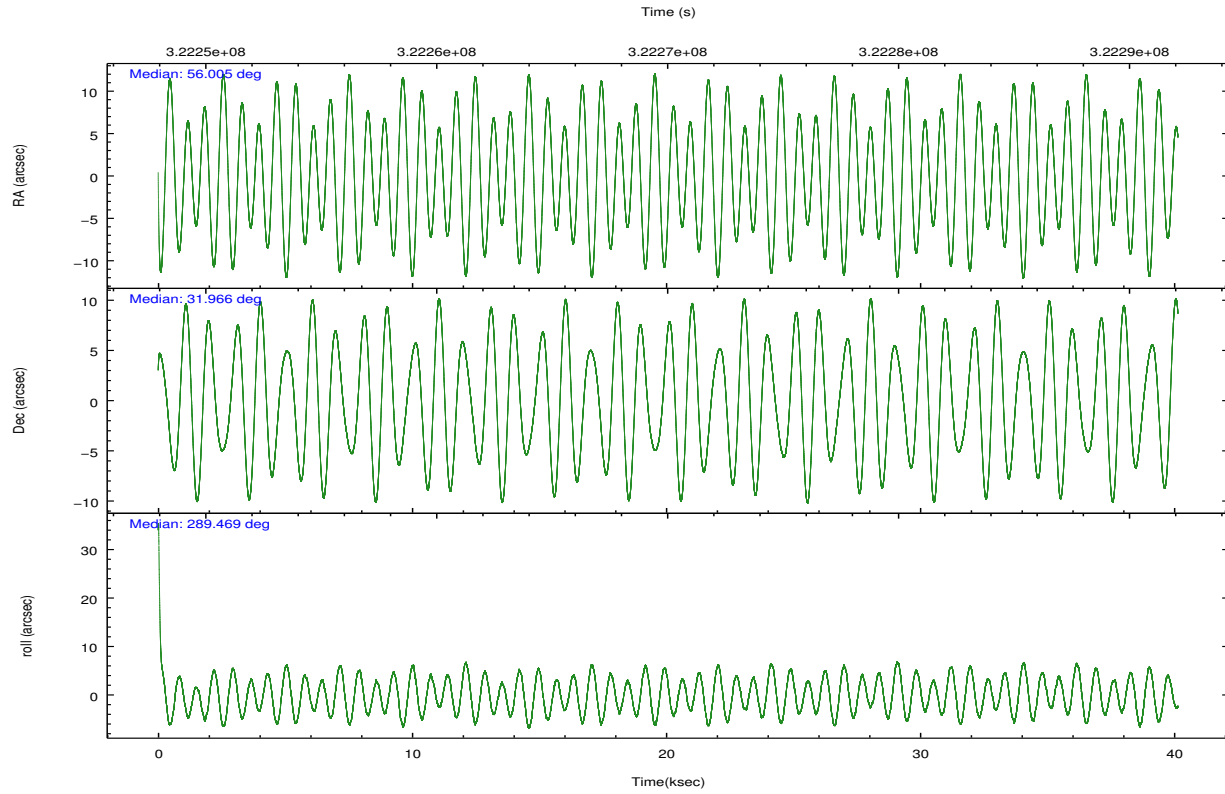
	ccd 0	ccd 1	ccd 2	ccd 3	ccd 6	ccd 7		ccd 0	ccd 1	ccd 2	ccd 3	ccd 6	ccd 7
level 1 events	293835	311837	332209	320089	334579	362699	grade 0 events	10883	24214	11577	12928	12877	15759
rejected events	262293	264535	300592	287285	299388	197364		3%	7%	3%	4%	3%	4%
rejected %	89%	84%	90%	89%	89%	54%	grade 1 events	152	340	191	198	171	435
								0%	0%	0%	0%	0%	0%
							grade 2 events	7820	8230	7734	6984	7931	33928
								2%	2%	2%	2%	2%	9%
							grade 3 events	3613	3958	3364	3568	3695	15310
								1%	1%	1%	1%	1%	4%
							grade 4 events	3293	3877	3413	3471	3624	15273
								1%	1%	1%	1%	1%	4%
							grade 5 events	11276	12544	10579	13232	13240	37767
								3%	4%	3%	4%	3%	10%
							grade 6 events	6117	7327	5708	6114	7269	86069
								2%	2%	1%	1%	2%	23%
							grade 7 events	250681	251347	289643	273594	285772	158158
								85%	80%	87%	85%	85%	43%

2.2 Compared Parameters

Parameter	Planned	Actual	Parameter	Planned	Actual
Instrument	ACIS	ACIS	Obspar format version number	7	7
Detector	ACIS-012367	ACIS-012367	Obspar file type	PREDICTED	ACTUAL
Grating	NONE	NONE	Obspar update status	NONE	UPDATED
Data mode	VFAINT	VFAINT	CCD I0 on	Y	Y
Observation mode	POINTING	POINTING	CCD I1 on	Y	Y
[deg] Pointing RA	55.980555	56.00528202538941	CCD I2 on	Y	Y
[deg] Pointing Dec	31.983992	31.966225690462	CCD I3 on	Y	Y
[deg] Pointing Roll	289.286256	289.4818584507491	CCD S0 on	N	N
[mm] SIM focus pos	-0.782348	-0.7809083437167272	CCD S1 on	N	N
[mm] SIM defocus	0	0.001439871863259334	CCD S2 on	Y	Y
[mm] SIM translation stage pos	-233.592463	-233.5874344608287	CCD S3 on	O1	Y
[mm] SIM translation stage offset	0	-0.005018542100998502	CCD S4 on	N	N
[s] Observation start time (MET)	322250082.184000	322248907.42877	CCD S5 on	N	N
Observation start date	2008-03-18T17:53:37	2008-03-18T17:35:07	Number of optional ACIS chips dropped	0	0
[s] Observation end time (MET)	322290082.184000	322290772.01831	On-chip summing requested	N	N
Observation end date	2008-03-19T05:00:17	2008-03-19T05:12:52	Subarray requested	NONE	NONE
Read mode	TIMED	TIMED	Alternating exposures requested	N	N
			[s] Primary exposure time	0.000000	3.2

2.3 Aspect



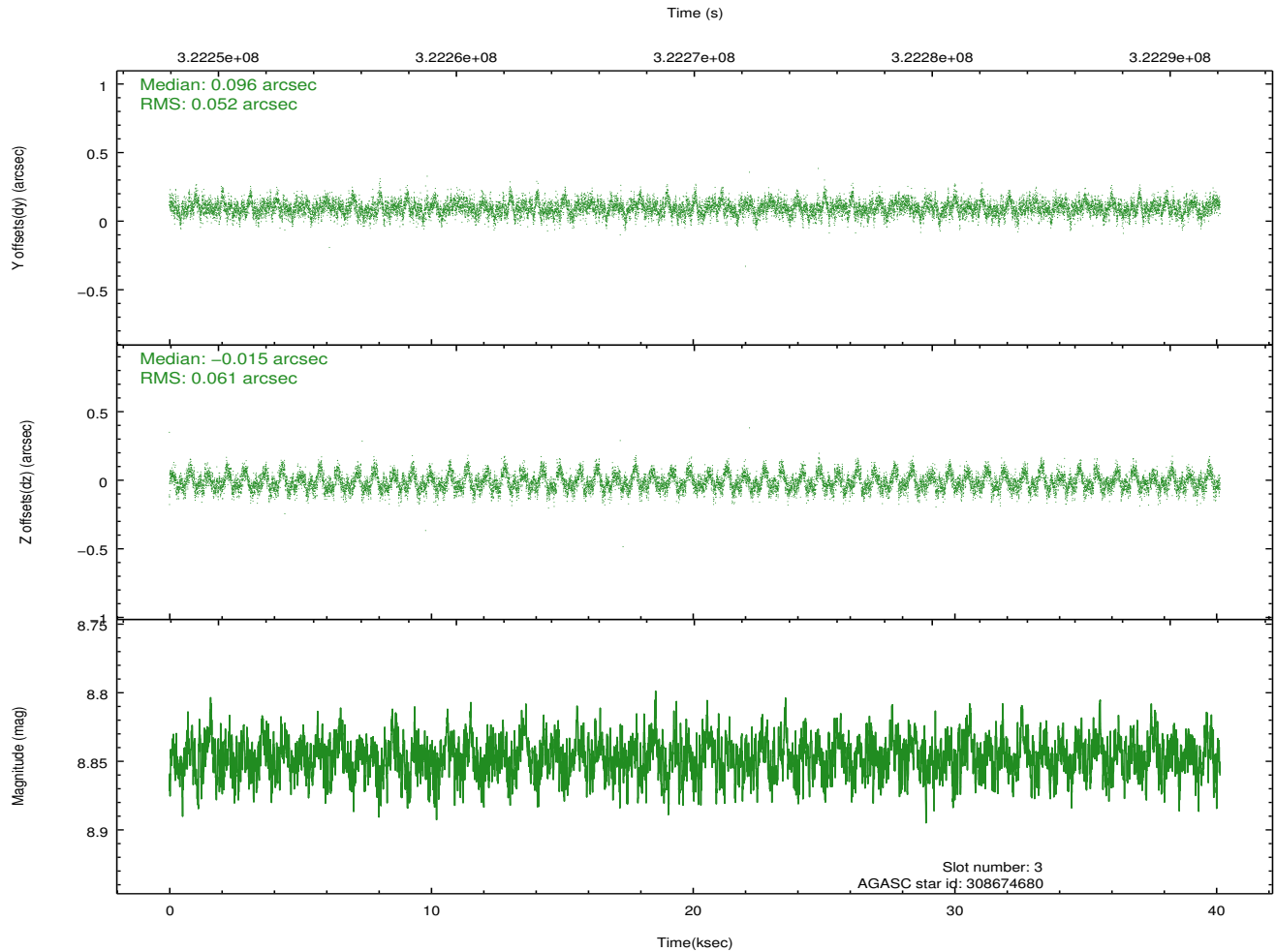
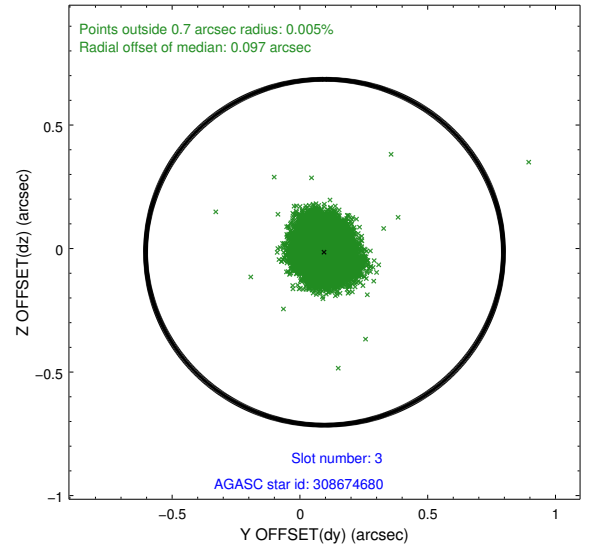
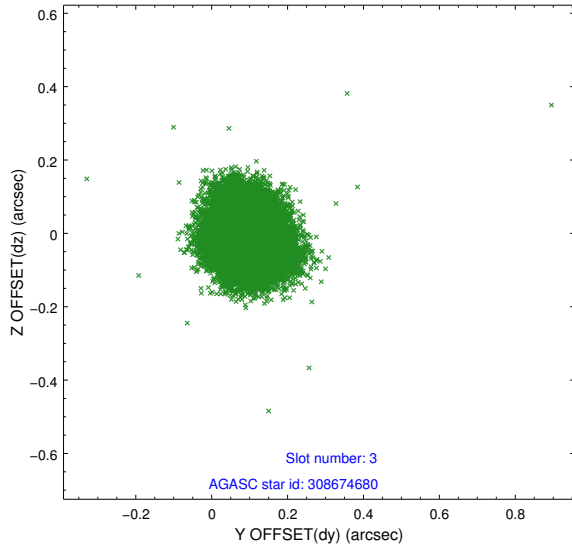


Slot Statistics

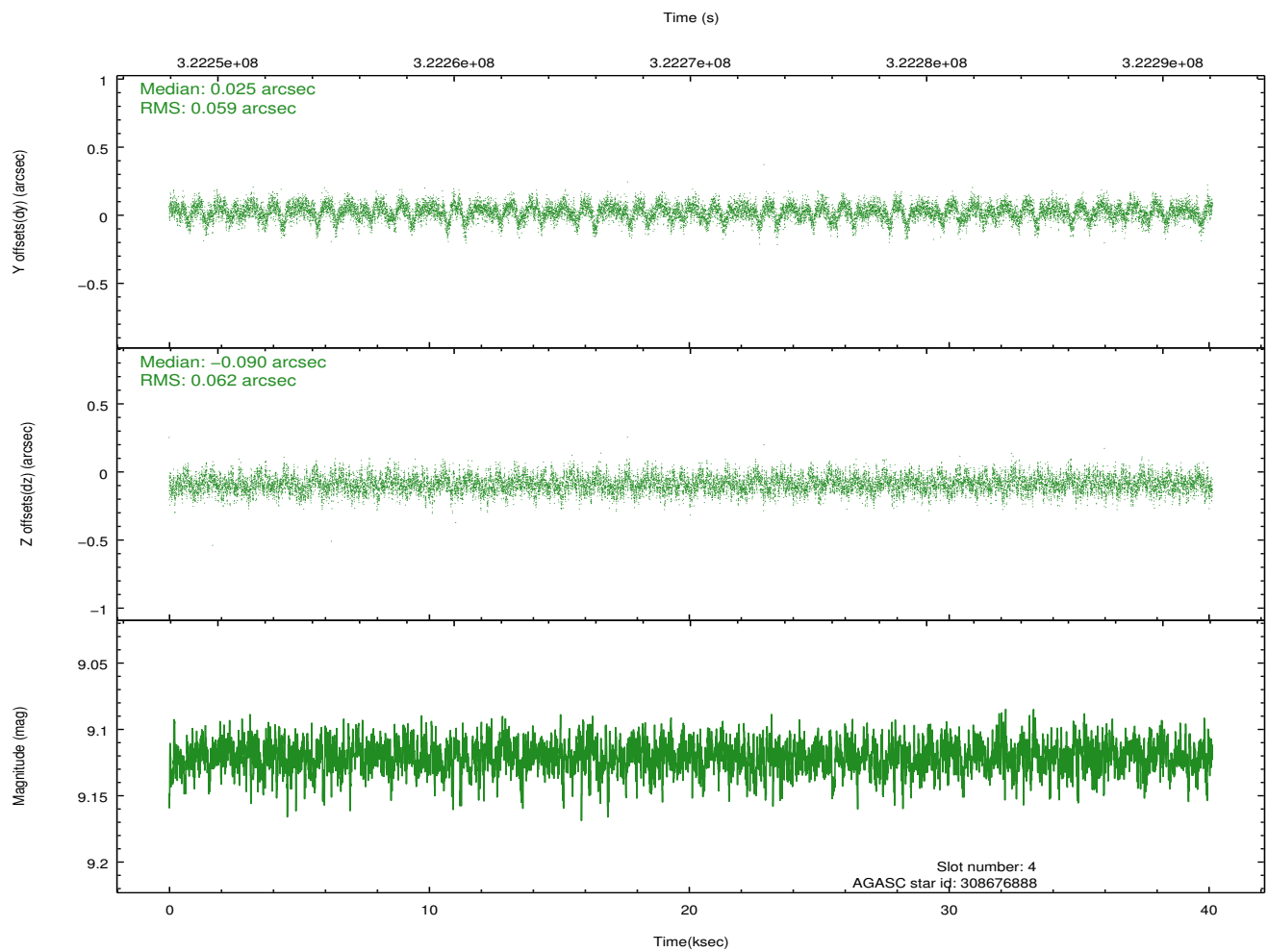
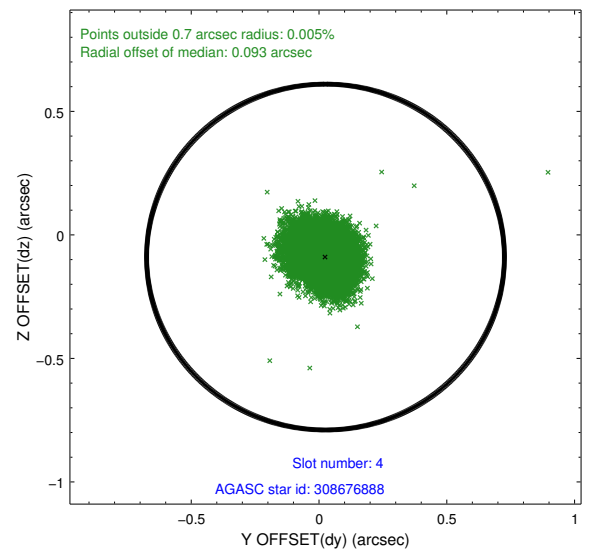
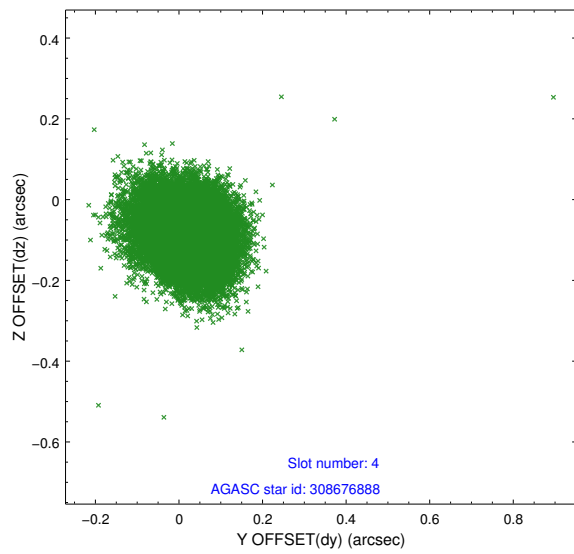
slot	status	id	mag	n_pts	med_dy	med_dz	dr1	dr2	ra	dec	mean_y	mean_z
0	FID	ACIS-I-2	7.13	9789	-0.097	-0.104	0.016	0.026	0.000000	0.000000	-768.81	-846.26
1	FID	ACIS-I-4	7.15	9788	0.200	0.086	0.009	0.016	0.000000	0.000000	2145.54	1060.09
2	FID	ACIS-I-5	7.21	9792	-0.203	0.087	0.014	0.022	0.000000	0.000000	-1822.72	1057.97
3	GUIDE	308674680	8.85	19577	0.096	-0.015	0.085	0.134	55.747345	31.652644	889.59	-1067.37
4	GUIDE	308676888	9.12	19572	0.025	-0.090	0.090	0.148	55.566279	31.676245	625.30	-1562.86
5	GUIDE	309332904	7.53	19581	-0.049	0.095	0.052	0.083	56.362777	32.287653	-649.80	1459.75
6	GUIDE	308676528	8.68	19579	-0.050	-0.046	0.088	0.143	55.206355	31.826287	-252.62	-2419.69
7	GUIDE	309336160	7.08	19582	-0.022	0.037	0.090	0.132	56.670296	32.290187	-353.65	2347.60

2.4 Star Slots

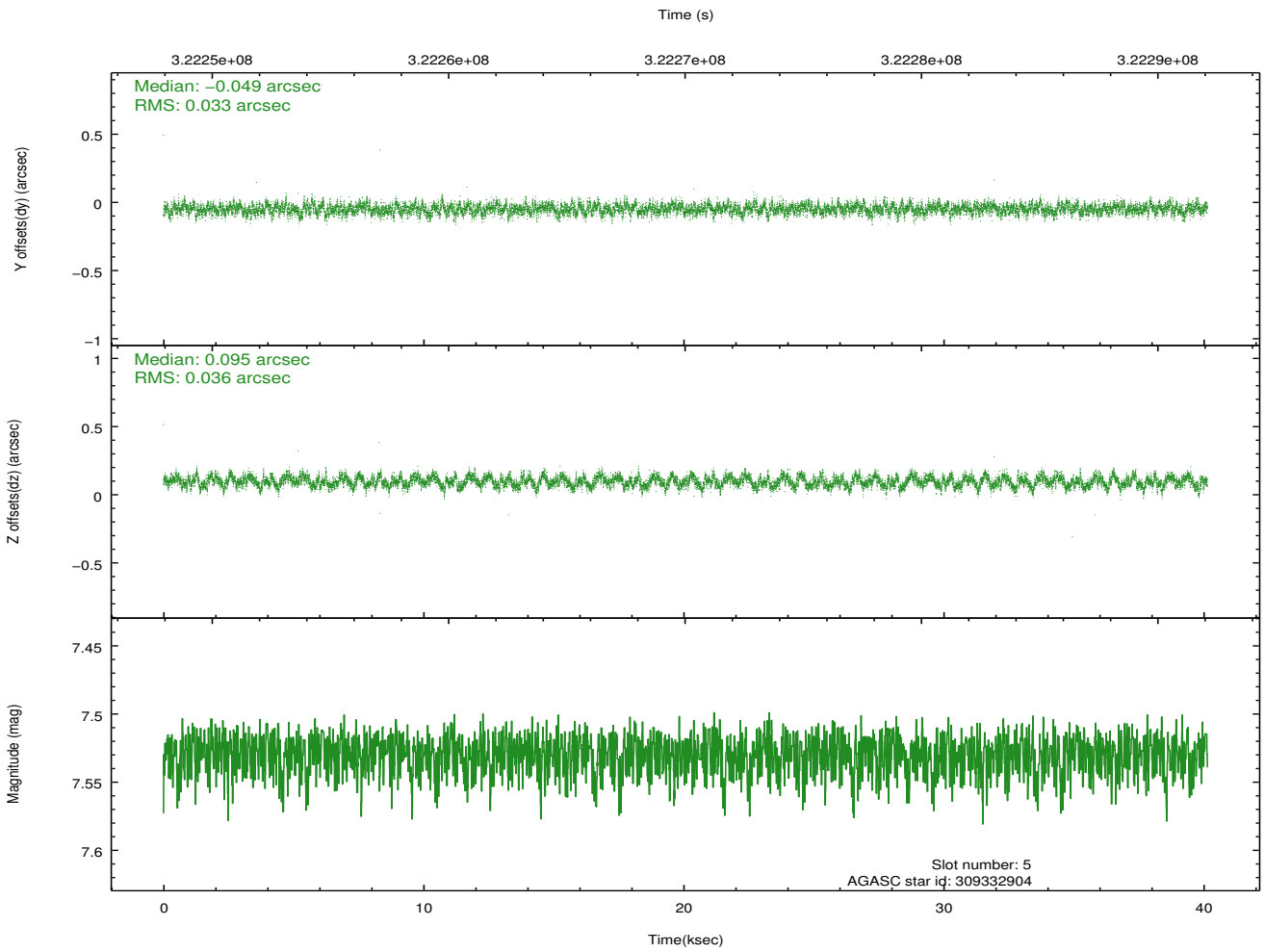
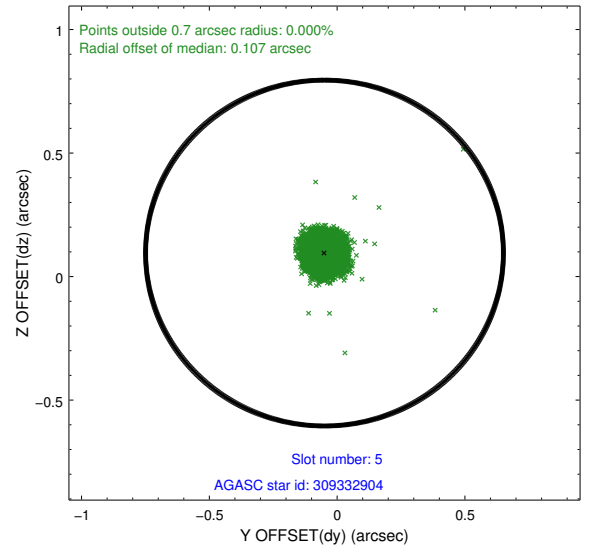
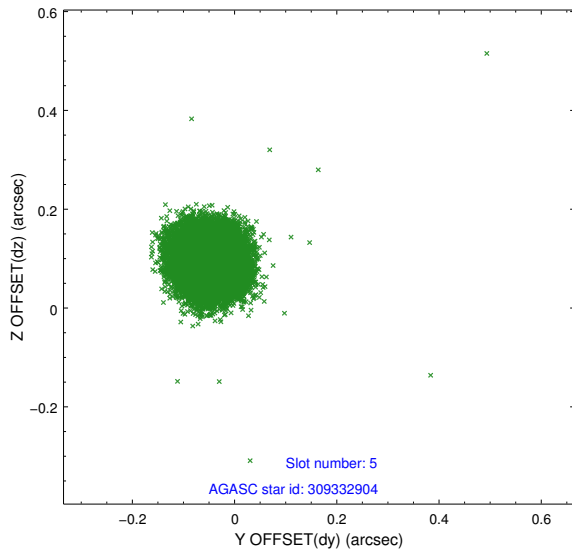
2.4.1 Slot 3



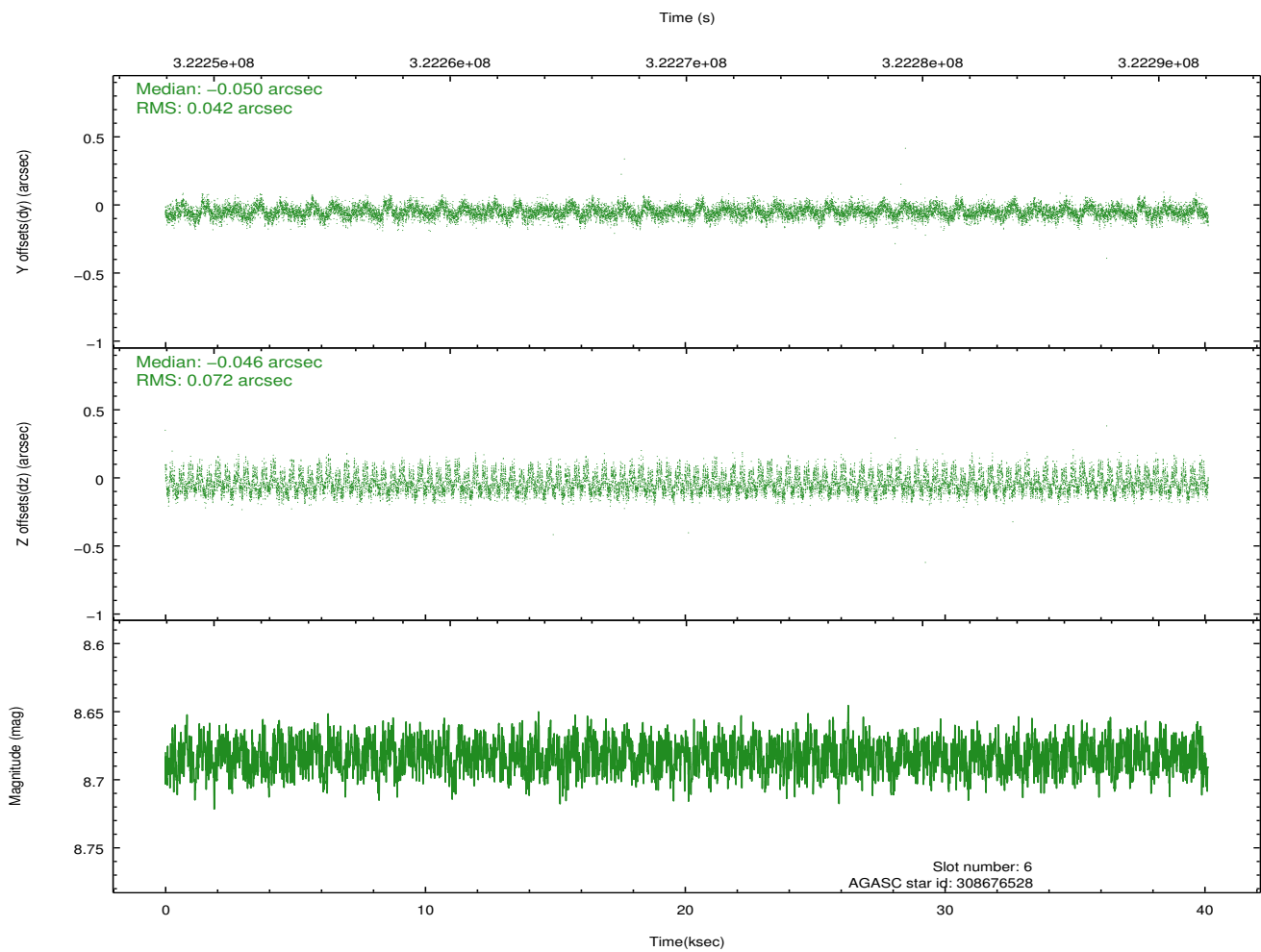
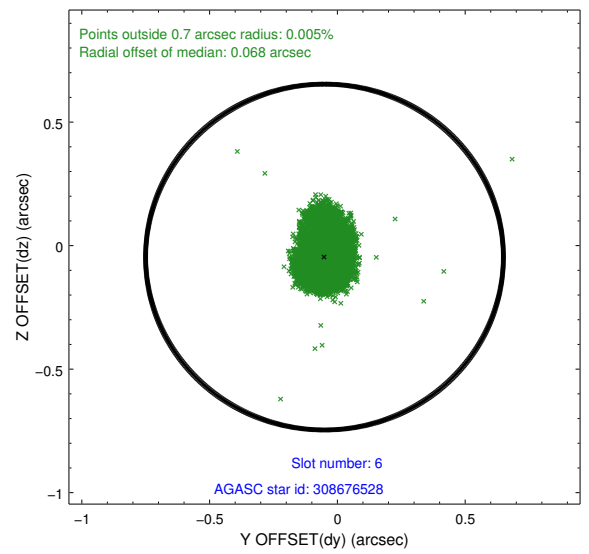
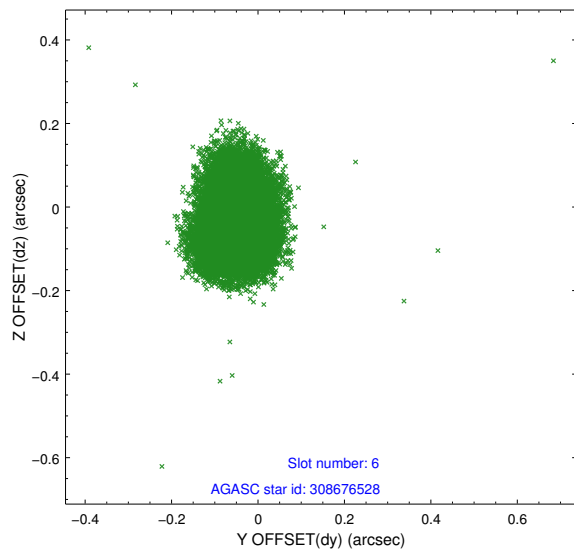
2.4.2 Slot 4



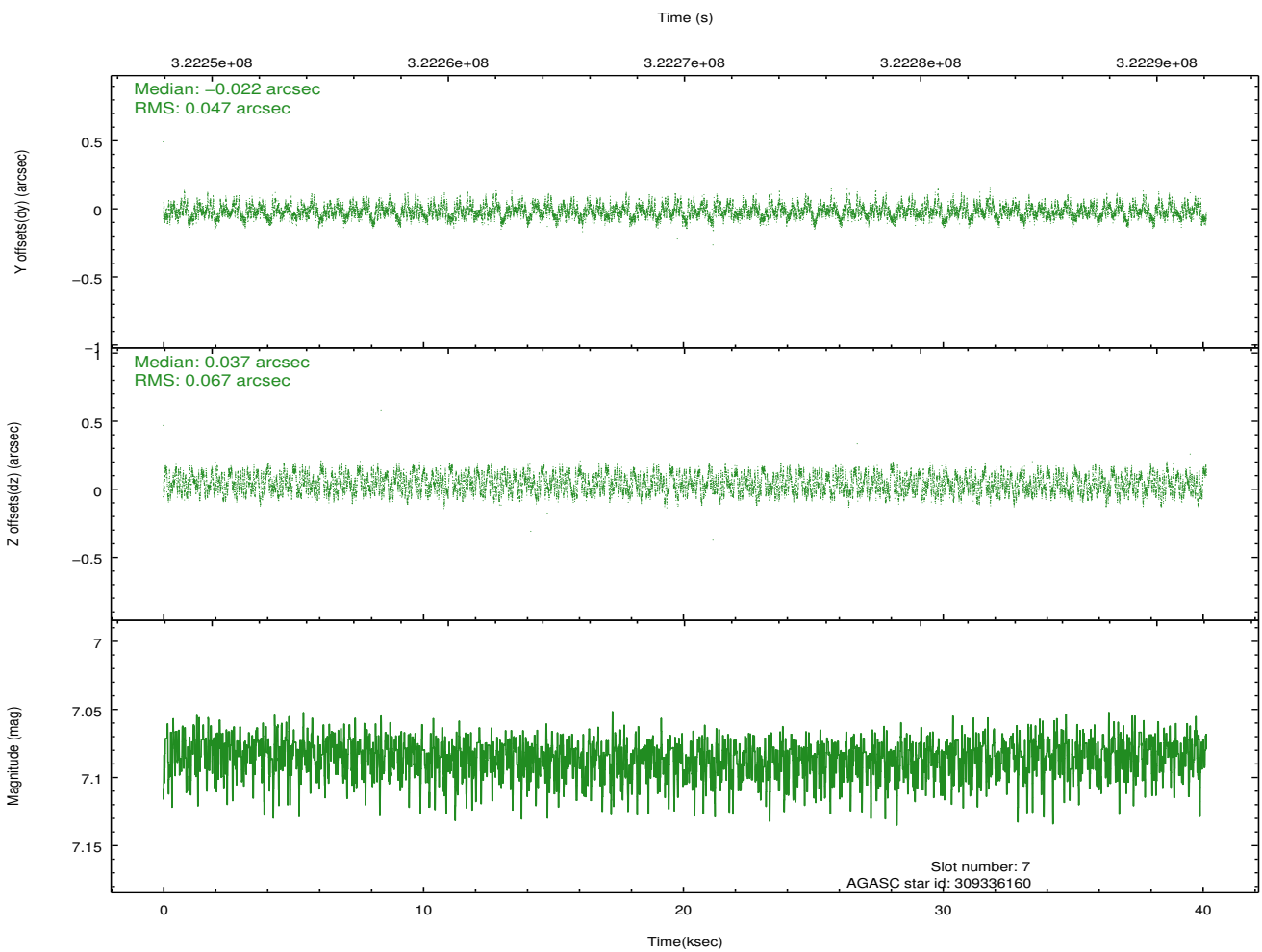
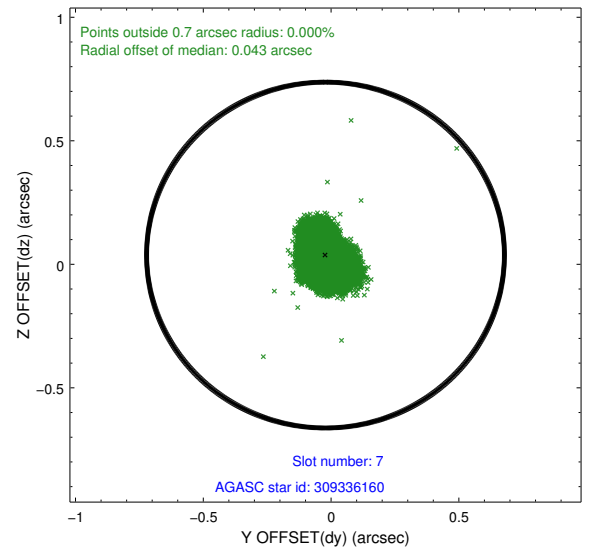
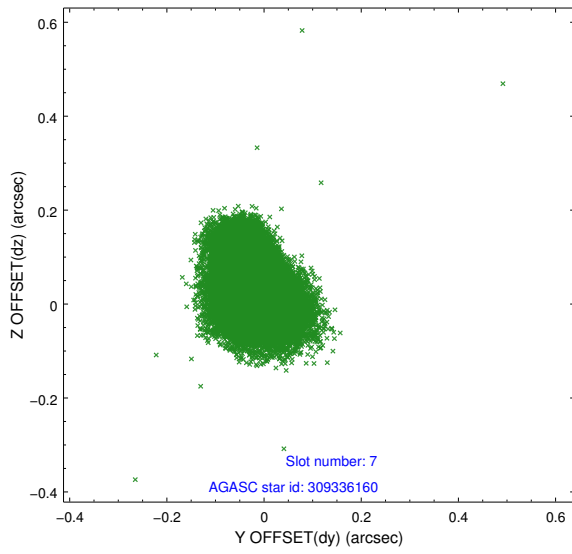
2.4.3 Slot 5



2.4.4 Slot 6

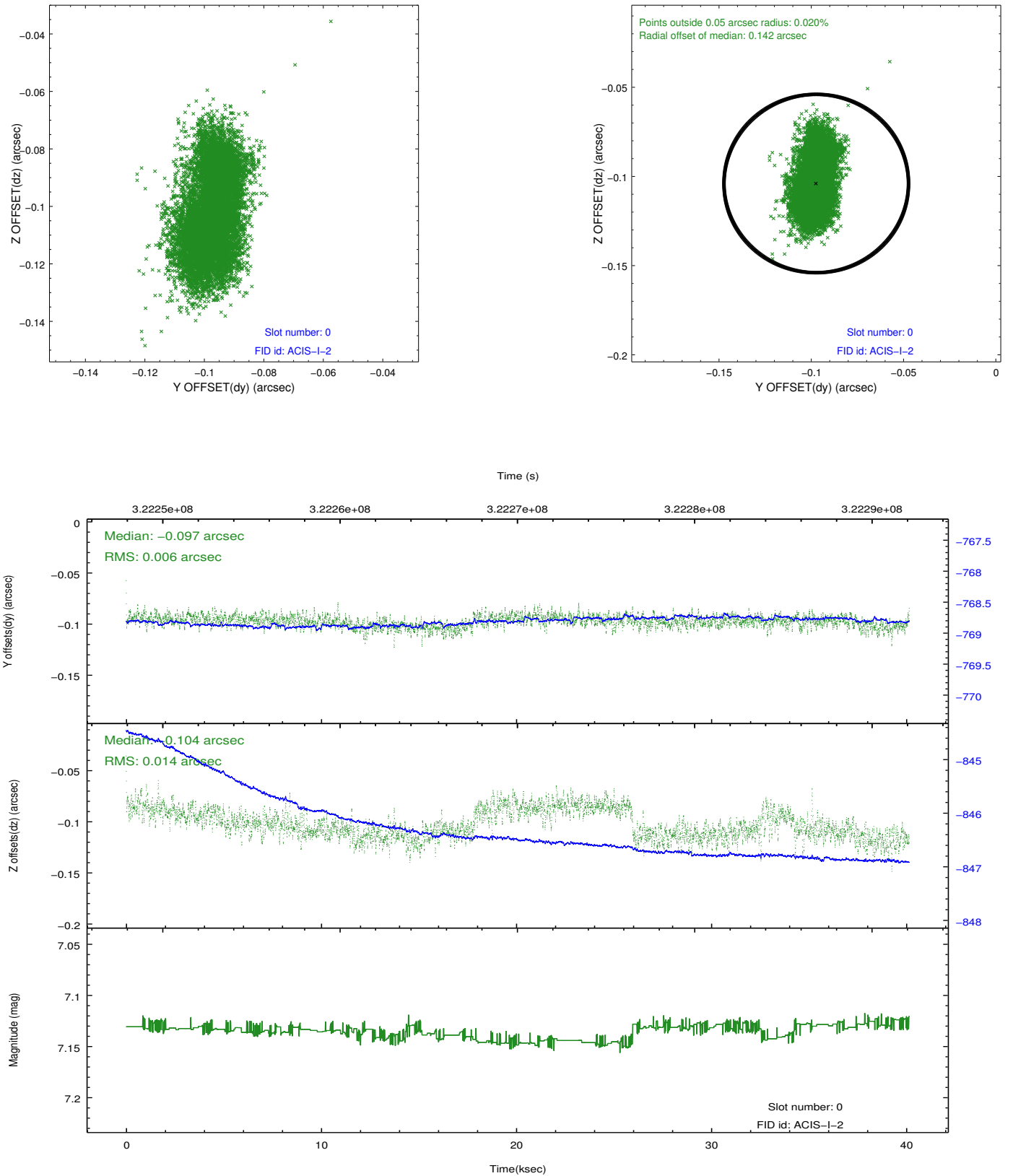


2.4.5 Slot 7

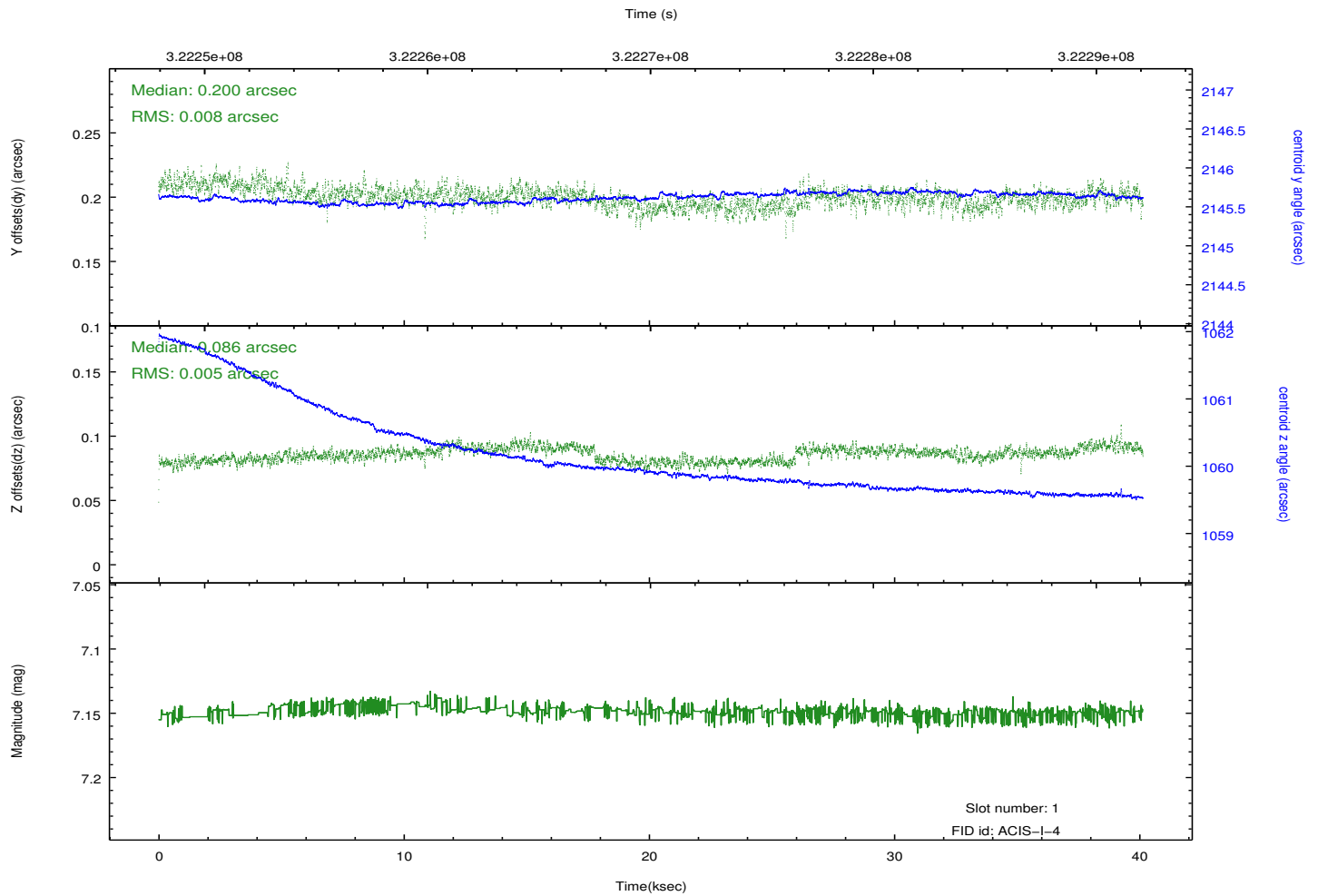
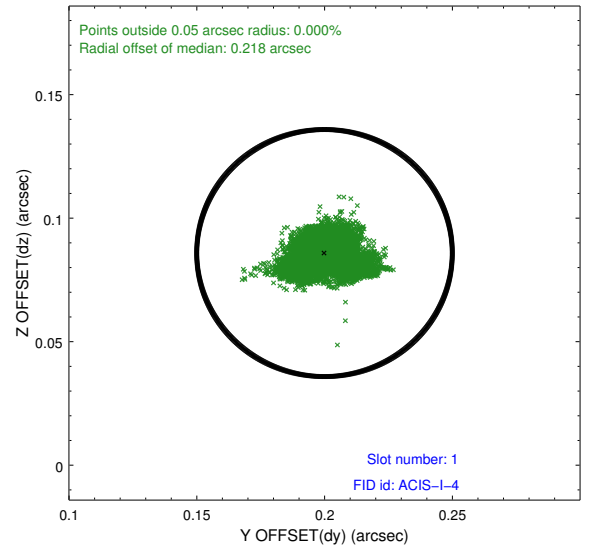
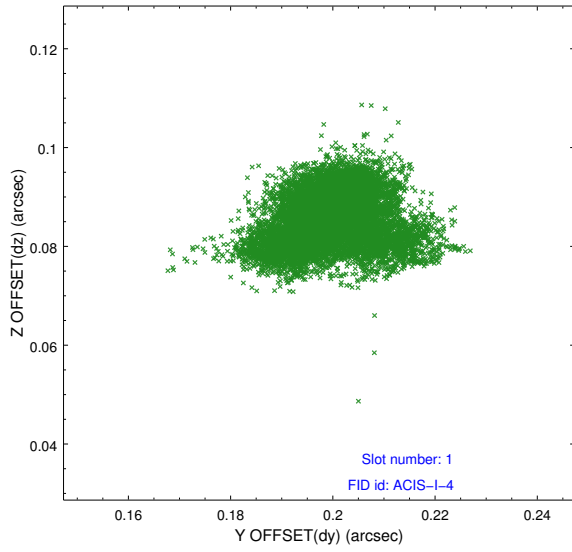


2.5 FID Slots

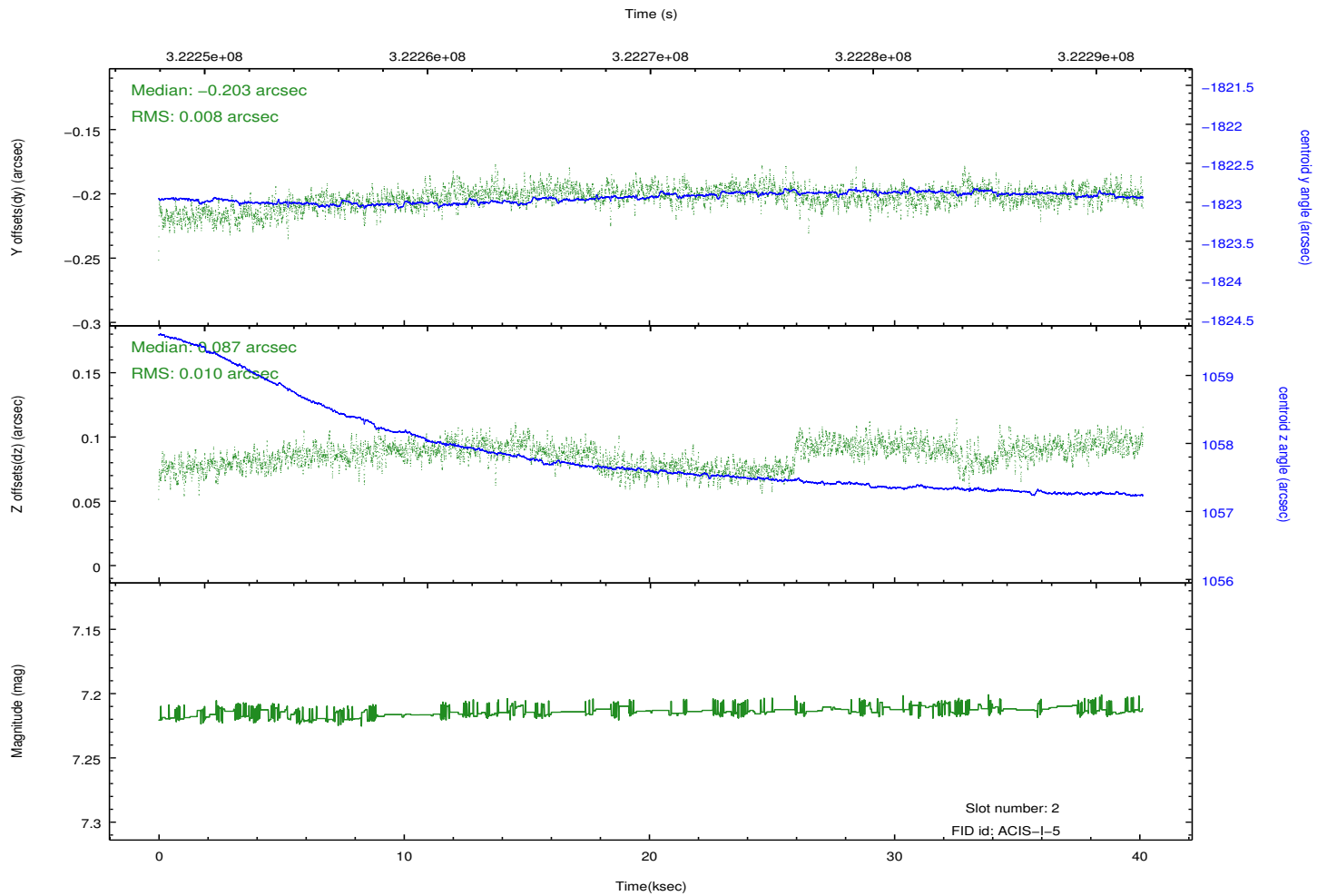
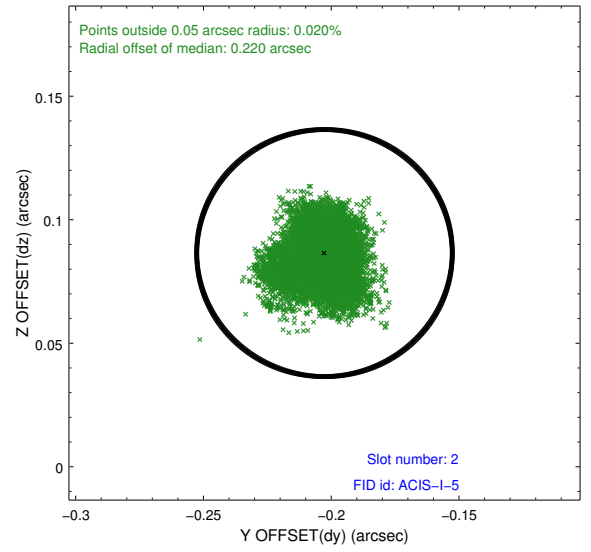
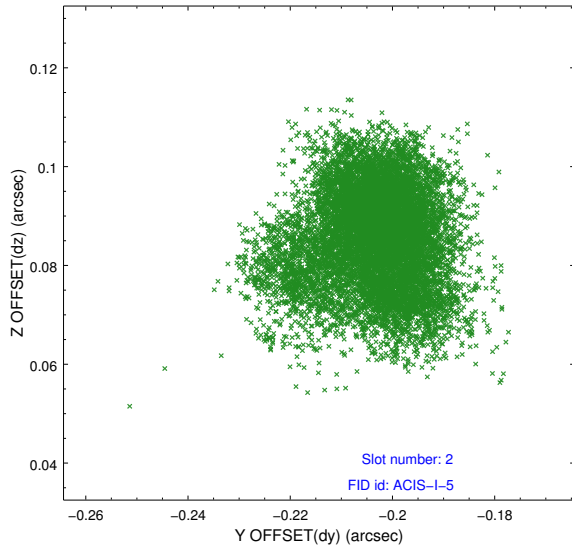
2.5.1 Slot 0



2.5.2 Slot 1



2.5.3 Slot 2



A Summary

A.1 Status

V&V Scientist	Beth Sundheim
V&V Date (YYYY-MM-DD)	2012.05.14
V&V Edition	1
V&V Disposition and Status	OK
V&V Charge Time	40.1245951

A.2 Comments

Joint proposal with NRAO.