

V&V Reference Report

L2 ASCDS Version : 8.4.4

Observation 8943 - L2 Version 2
Chandra X-Ray Center

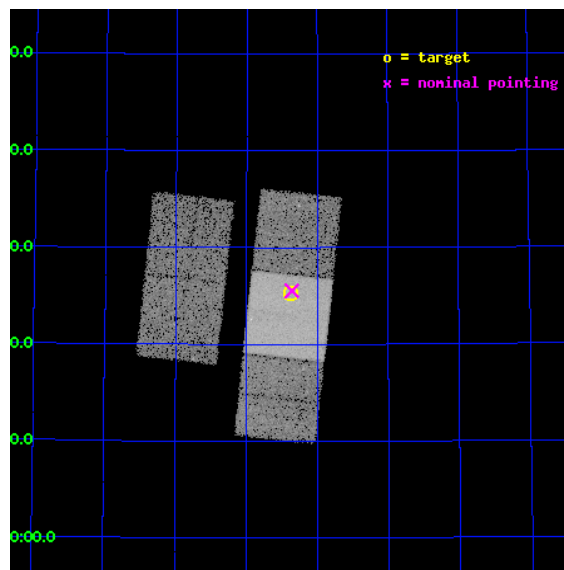
L2 Processing Date : May 17 2012

Contents

1	Front	2
2	OBI	3
2.1	OBI	3
2.1.1	Images	3
2.1.2	Bias	3
2.1.3	Parameters	4
2.1.4	Events	4
2.2	Compared Parameters	5
2.3	Aspect	6
2.4	Star Slots	9
2.4.1	Slot 3	9
2.4.2	Slot 4	10
2.4.3	Slot 5	11
2.4.4	Slot 6	12
2.4.5	Slot 7	13
2.5	FID Slots	14
2.5.1	Slot 0	14
2.5.2	Slot 1	15
2.5.3	Slot 2	16
A	Summary	17
A.1	Status	17
A.2	Comments	17

1 Front

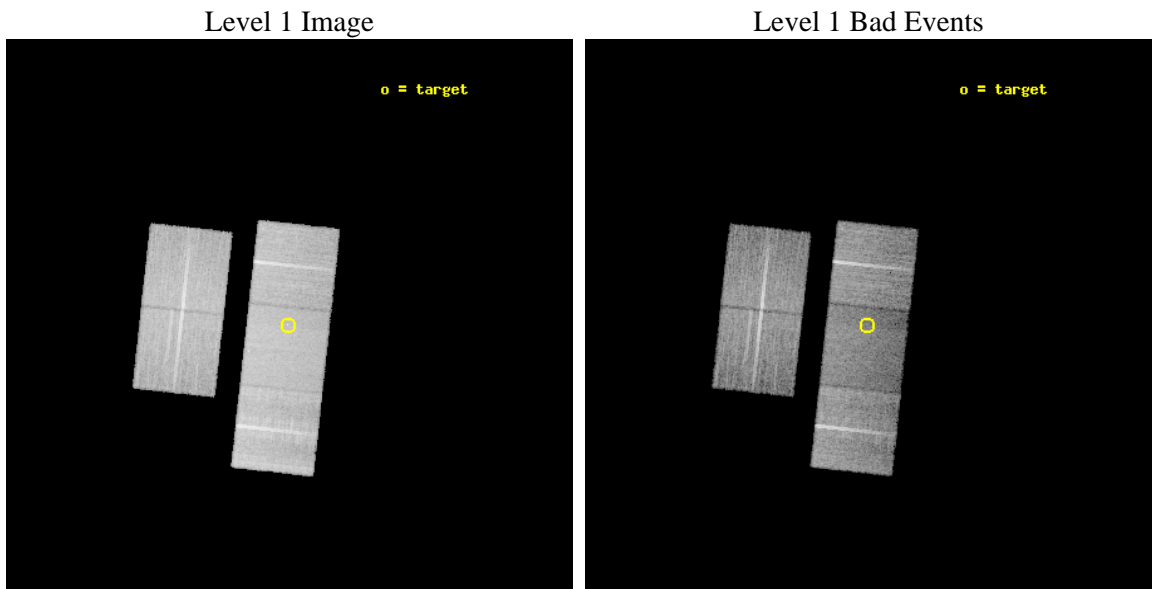
seq_num	200524	Sequence number
obs_id	8943	Observation id
title	A Survey of X-ray Emission from Nitrogen-rich Wolf-Rayet Stars	Pro
observer	Dr. Stephen Skinner	Principal investigator
object	WR 2	Source name
dtcycle	0	
cycle	P	events from which exps? Prim/Second/Both
ra_targ	16.345833	Observer's specified target RA [deg]
dec_targ	60.421917	Observer's specified target Dec [deg]
ra_nom	16.339813962449	Nominal RA [deg]
dec_nom	60.425739395333	Nominal Dec [deg]
roll_nom	96.273956700541	Nominal Roll [deg]
revision	2	Processing version of data
ontime	15648.800120354	Sum of GTIs [s]
livetime	15444.337026302	Livetime [s]
ontime2	15645.659130096	Sum of GTIs [s]
ontime3	15645.659150004	Sum of GTIs [s]
ontime6	15648.800120354	Sum of GTIs [s]
ontime7	15648.800120354	Sum of GTIs [s]
ontime8	15648.800120354	Sum of GTIs [s]
l2events	106787	Number of level 2 events



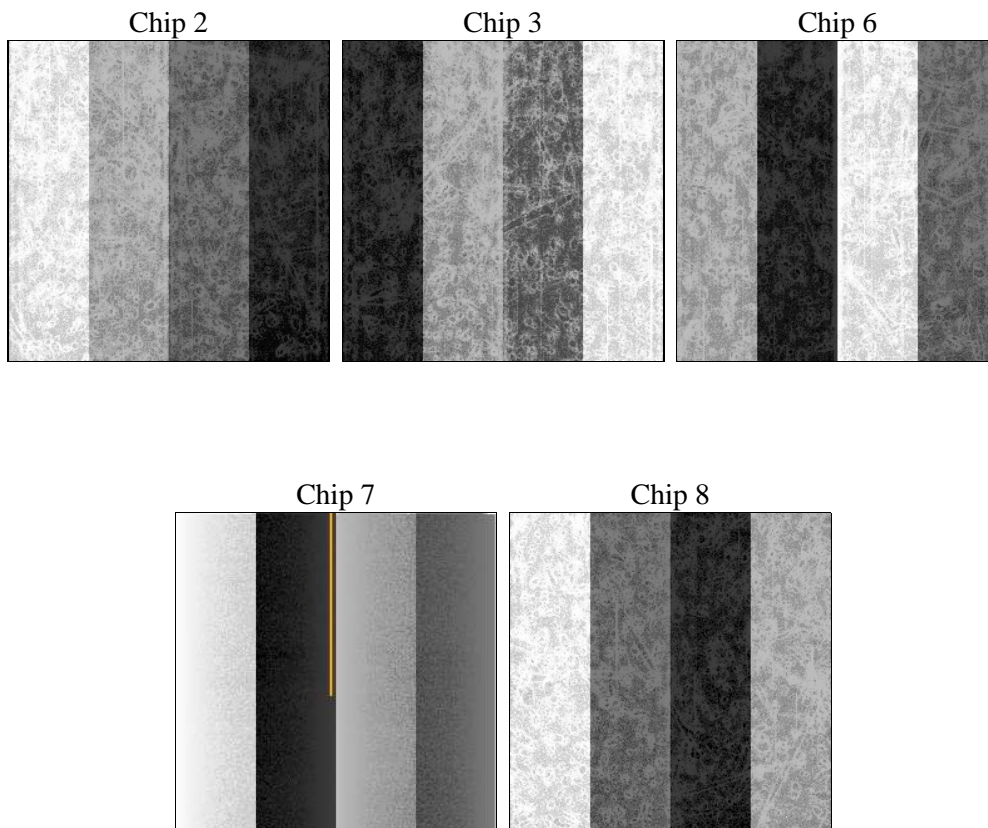
2 OBI

2.1 OBI

2.1.1 Images



2.1.2 Bias



2.1.3 Parameters

obi_num	0	Obi number	sched_exp_time	15500.000000	[s] Scheduled observation exposure time
ascdsver	8.4.4	Processing system revision	ontime	15648.800120354	Sum of GTIs [s]
caldbver	4.4.9	 	ontime2	15645.659130096	Sum of GTIs [s]
date	2012-05-17T04:11:08	Date and time of file creation	ontime3	15645.659150004	Sum of GTIs [s]
revision	2	Processing version of data	ontime6	15648.800120354	Sum of GTIs [s]
			ontime7	15648.800120354	Sum of GTIs [s]
			ontime8	15648.800120354	Sum of GTIs [s]
			l1events	722457	Number of level 1 events

2.1.4 Events

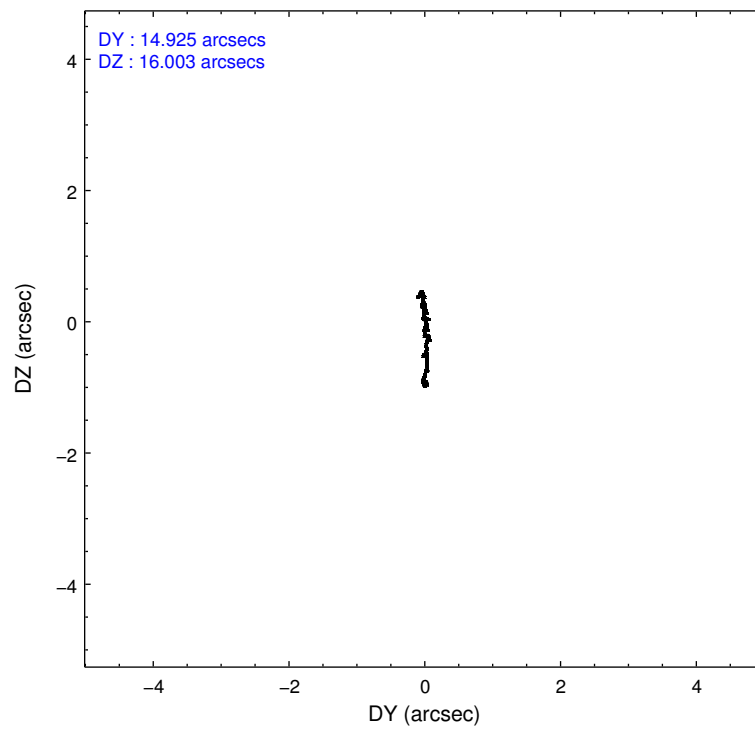
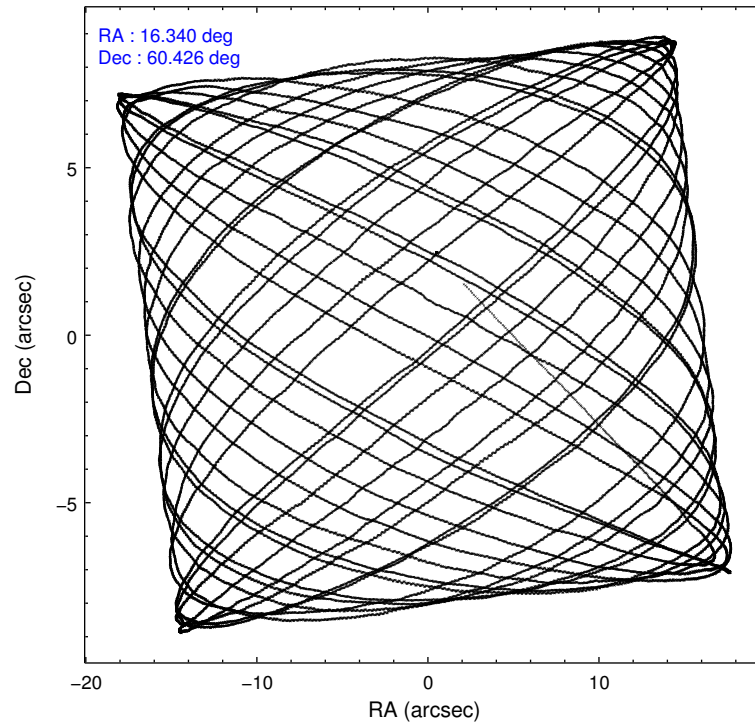
	ccd 2	ccd 3	ccd 6	ccd 7	ccd 8
level 1 events	135143	129864	135014	150892	171544
rejected events	123089	117913	121863	87381	131636
rejected %	91%	90%	90%	57%	76%

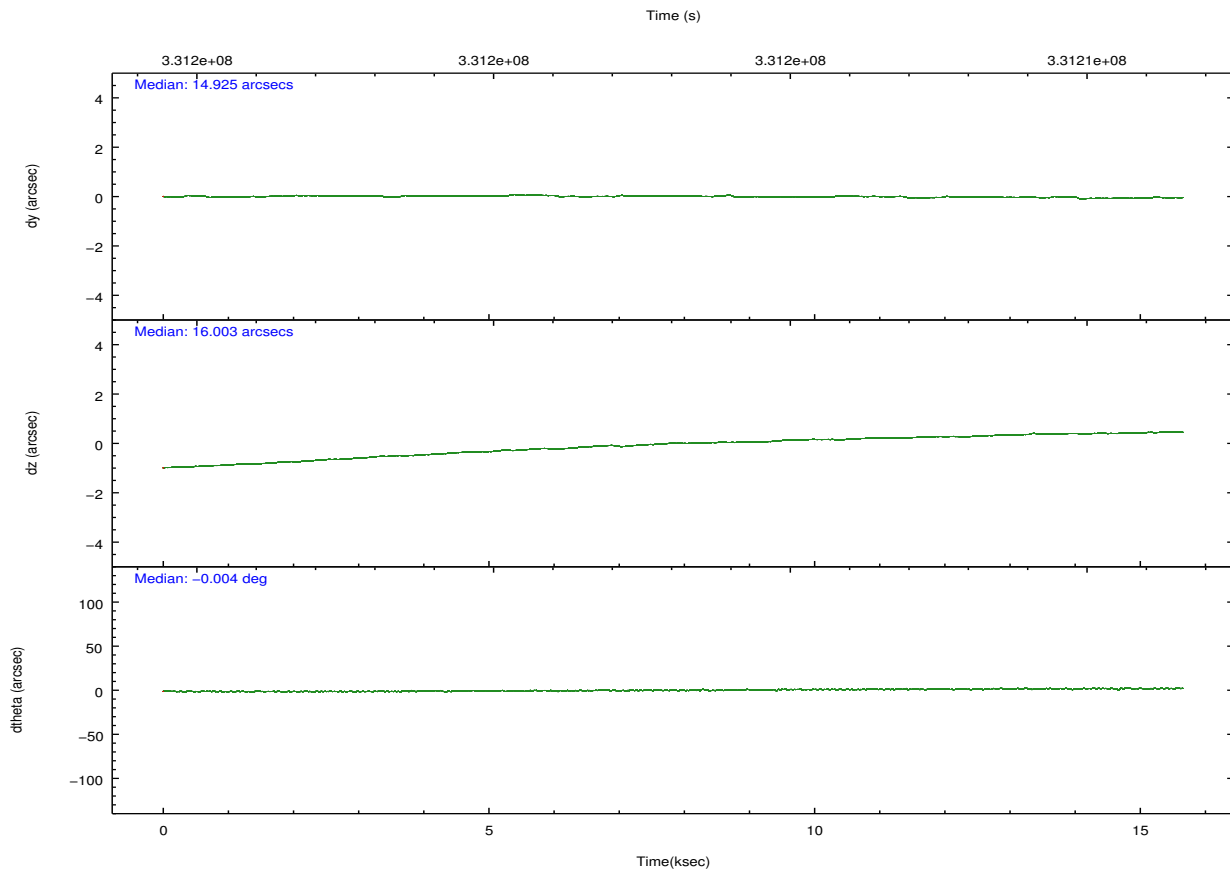
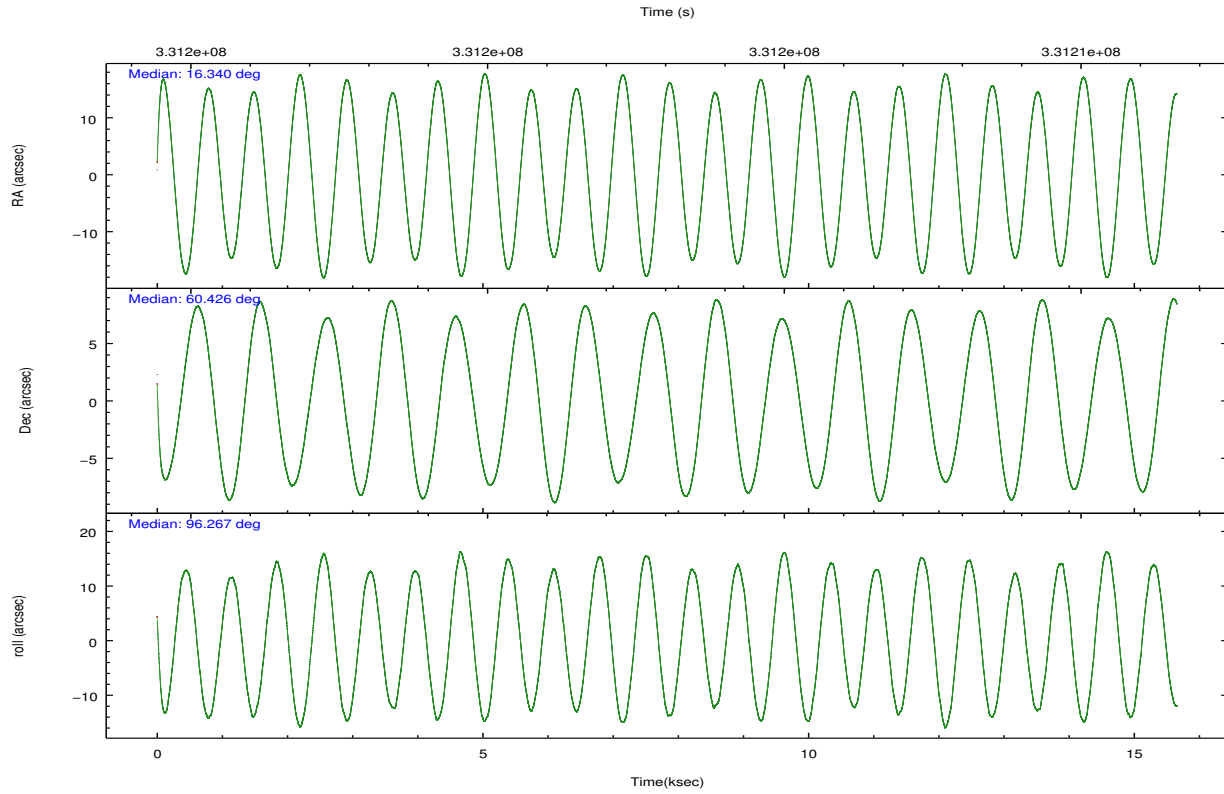
	ccd 2	ccd 3	ccd 6	ccd 7	ccd 8
grade 0 events	4478	4492	4826	6130	13120
	3%	3%	3%	4%	7%
grade 1 events	70	73	89	174	153
	0%	0%	0%	0%	0%
grade 2 events	3097	2845	3169	13879	9729
	2%	2%	2%	9%	5%
grade 3 events	1400	1463	1483	6341	4475
	1%	1%	1%	4%	2%
grade 4 events	1460	1436	1502	6175	4134
	1%	1%	1%	4%	2%
grade 5 events	4384	5453	5563	15721	7973
	3%	4%	4%	10%	4%
grade 6 events	2430	2457	3052	35201	11317
	1%	1%	2%	23%	6%
grade 7 events	117824	111645	115330	67271	120643
	87%	85%	85%	44%	70%

2.2 Compared Parameters

Parameter	Planned	Actual	Parameter	Planned	Actual
Instrument	ACIS	ACIS	Obspar format version number	7	7
Detector	ACIS-23678	ACIS-23678	Obspar file type	PREDICTED	ACTUAL
Grating	NONE	NONE	Obspar update status	NONE	UPDATED
Data mode	FAINT	FAINT	Number of optional ACIS chips dropped	0	0
Observation mode	POINTING	POINTING	On-chip summing requested	N	N
[deg] Pointing RA	16.373147	16.33981396244866	Subarray requested	NONE	NONE
[deg] Pointing Dec	60.403905	60.42573939533288	Alternating exposures requested	N	N
[deg] Pointing Roll	96.088343	96.27395670054065	[s] Primary exposure time	0.000000	3.1
[mm] SIM focus pos	-0.684267	-0.6828225247311905			
[mm] SIM defocus	0	0.001444936568705701			
[mm] SIM translation stage pos	-190.132523	-190.1425803651734			
[mm] SIM translation stage offset	0	0.01005778216563158			
[s] Observation start time (MET)	331195354.184000	331193837.37746			
Observation start date	2008-06-30T06:41:29	2008-06-30T06:17:17			
[s] Observation end time (MET)	331210854.184000	331211871.74084			
Observation end date	2008-06-30T10:59:49	2008-06-30T11:17:51			
Read mode	TIMED	TIMED			

2.3 Aspect



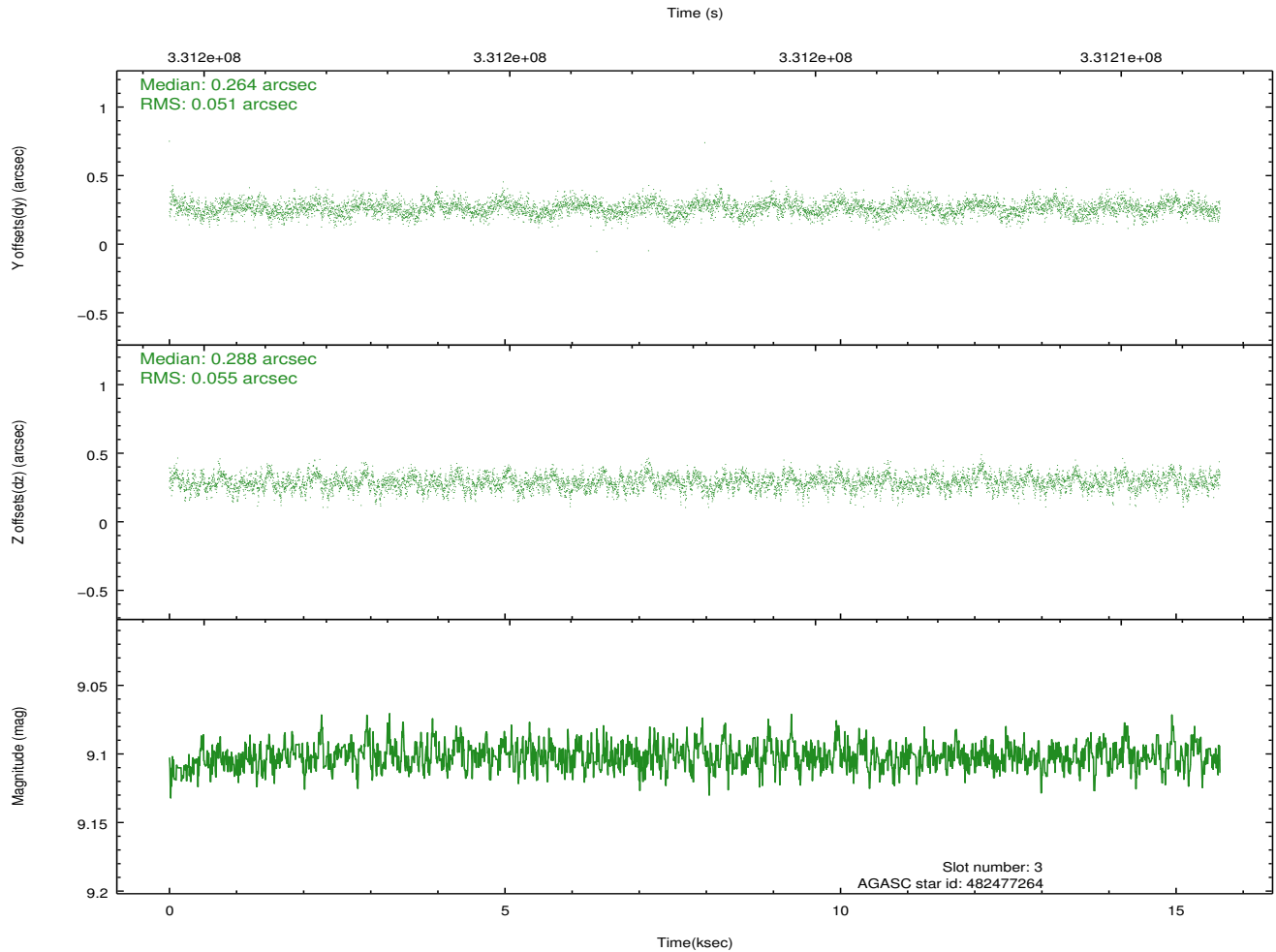
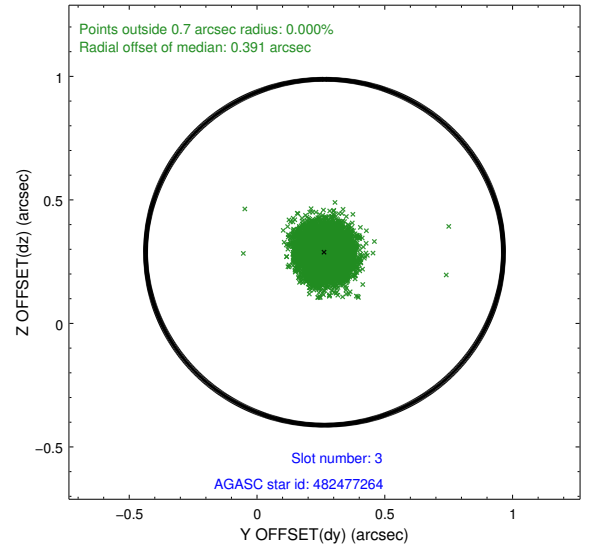
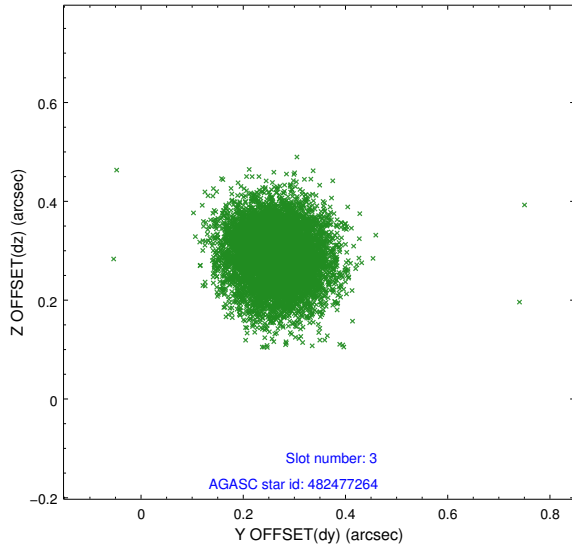


Slot Statistics

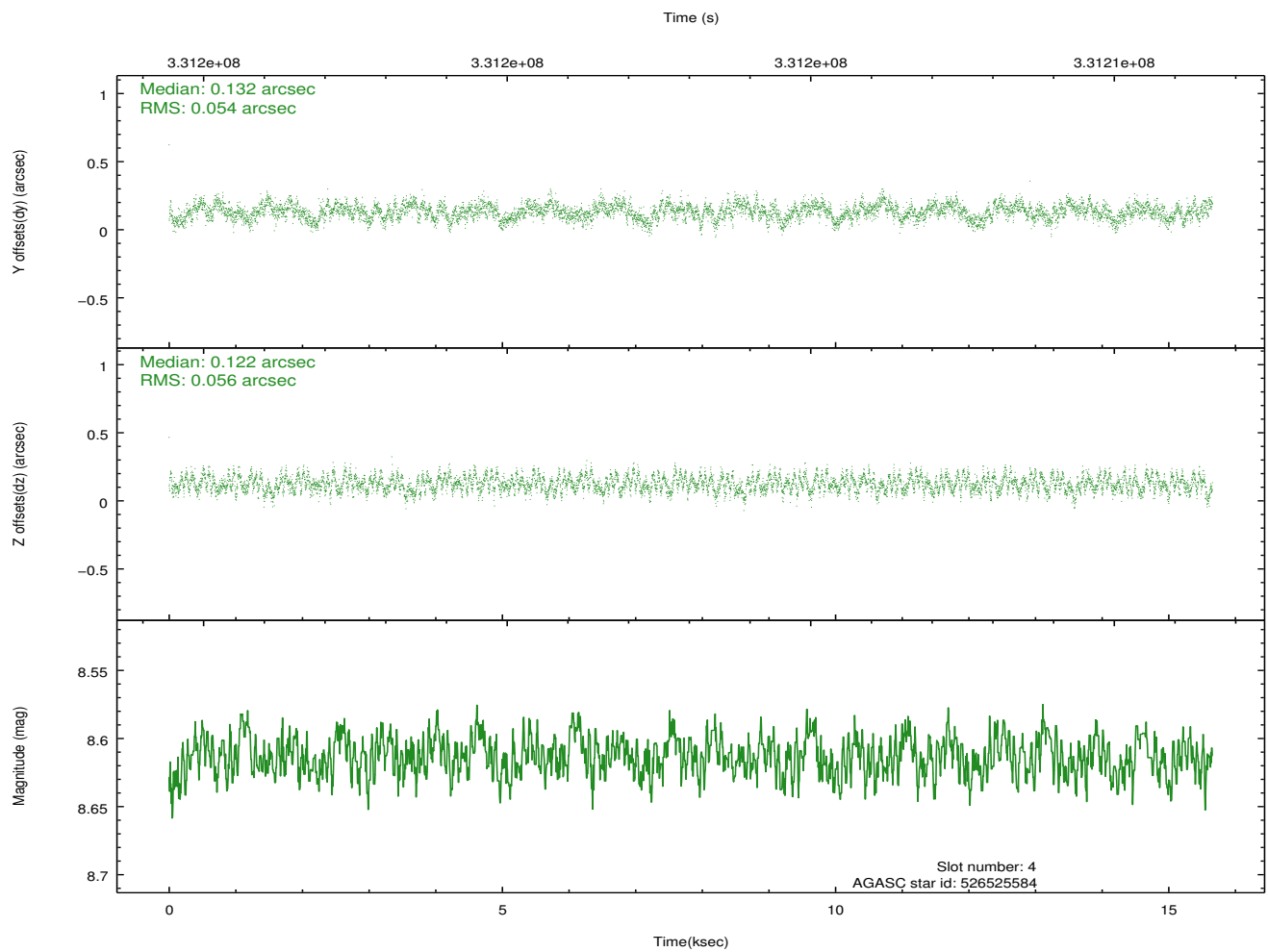
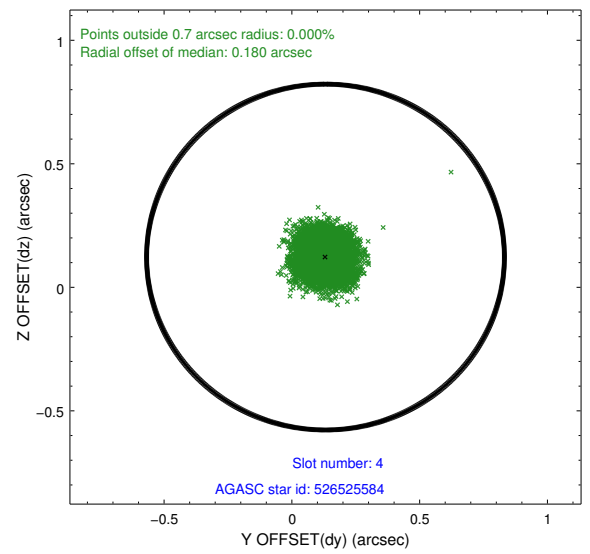
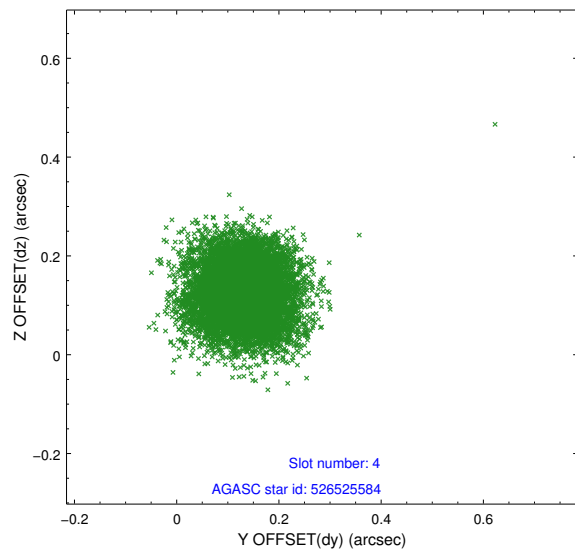
slot	status	id	mag	n_pts	med_dy	med_dz	dr1	dr2	ra	dec	mean_y	mean_z
0	FID	ACIS-S-2	6.92	3818	-0.079	-0.001	0.009	0.014	0.000000	0.000000	-767.97	-1737.24
1	FID	ACIS-S-4	7.01	3819	0.145	0.038	0.007	0.014	0.000000	0.000000	2145.40	170.99
2	FID	ACIS-S-5	7.04	3817	-0.098	-0.029	0.008	0.013	0.000000	0.000000	-1820.47	164.91
3	GUIDE	482477264	9.10	7636	0.264	0.288	0.080	0.128	16.865120	59.909645	-1859.71	-694.47
4	GUIDE	526525584	8.61	7633	0.132	0.122	0.084	0.130	16.454752	60.772187	1303.25	-283.02
5	GUIDE	526530256	8.51	7636	-0.217	-0.195	0.064	0.105	15.339794	60.792101	1596.38	1655.38
6	GUIDE	528225312	9.19	7626	-0.092	0.185	0.090	0.144	17.470906	61.019295	2016.39	-2139.91
7	GUIDE	526533728	7.02	7636	-0.084	-0.400	0.071	0.108	15.011612	60.509959	660.36	2355.35

2.4 Star Slots

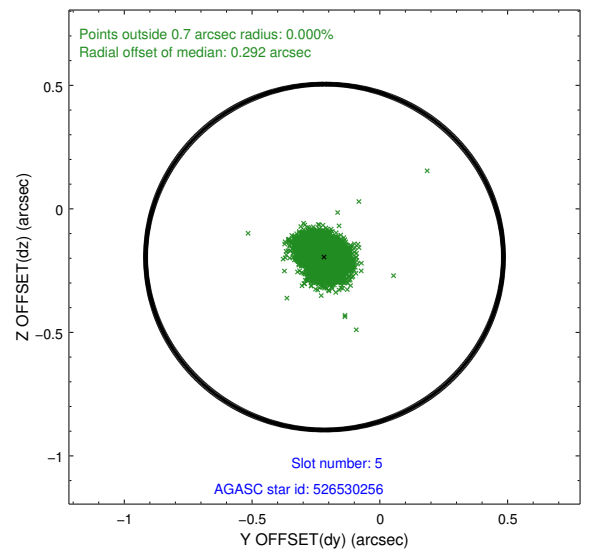
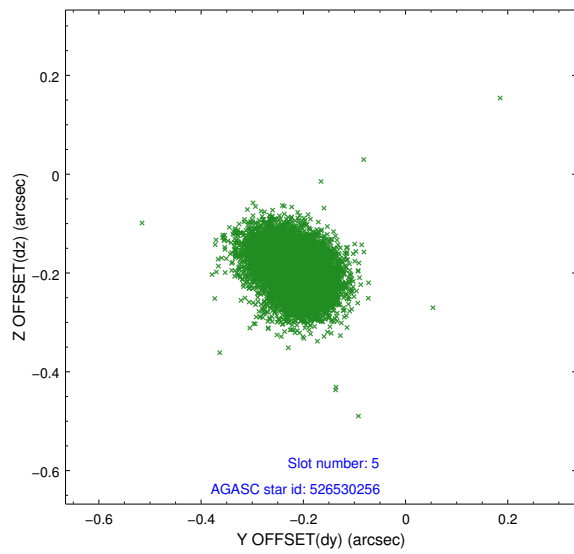
2.4.1 Slot 3



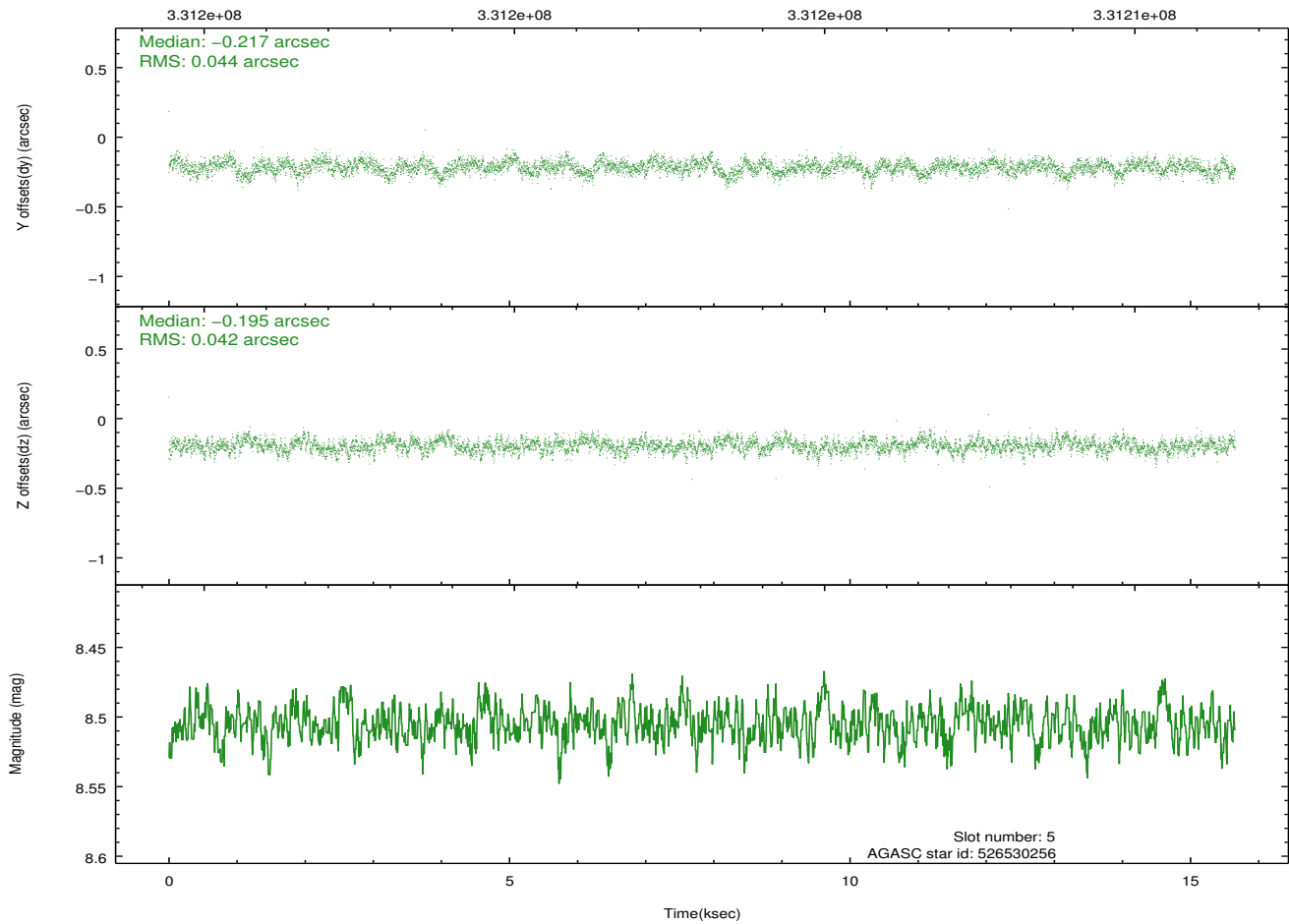
2.4.2 Slot 4



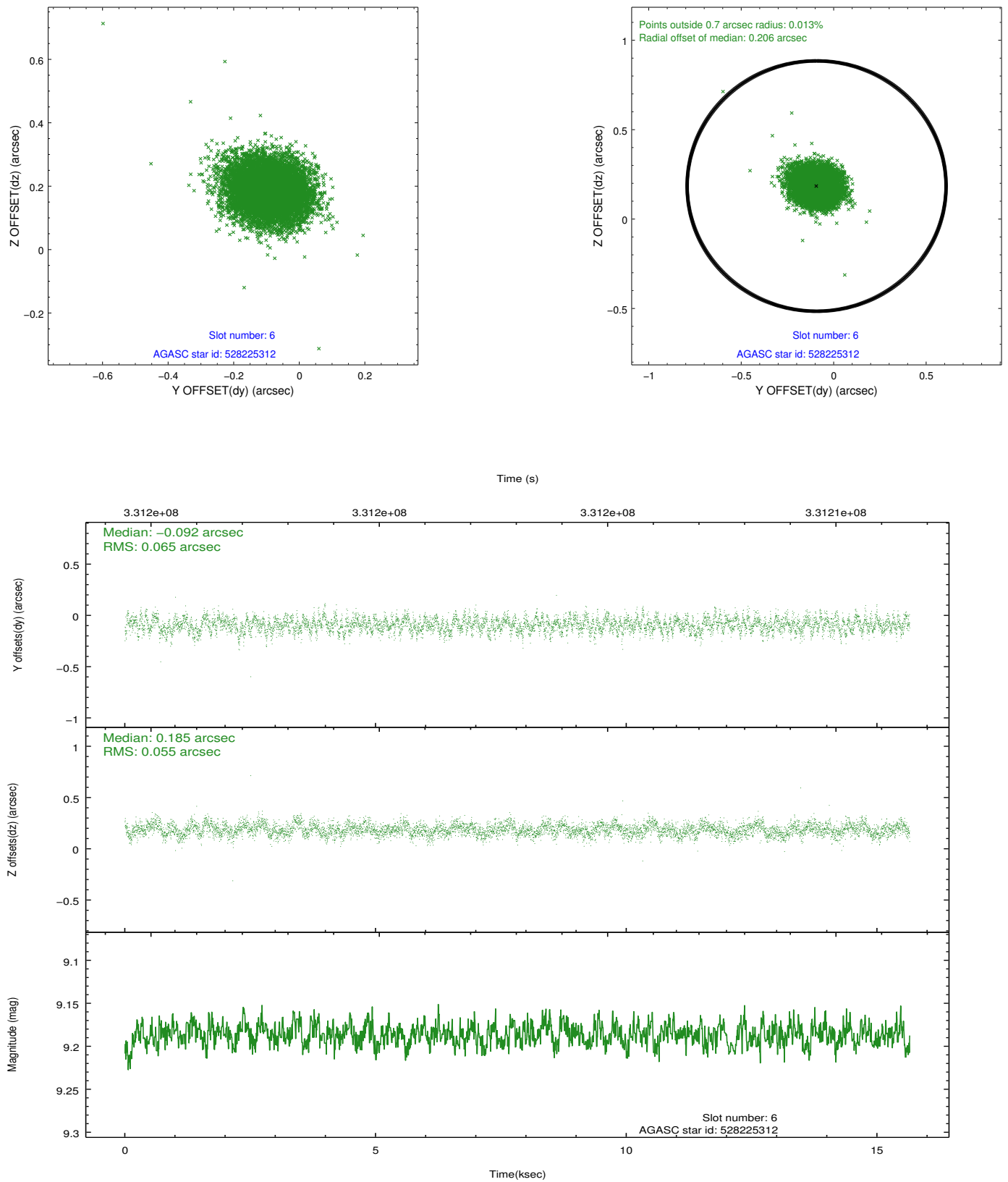
2.4.3 Slot 5



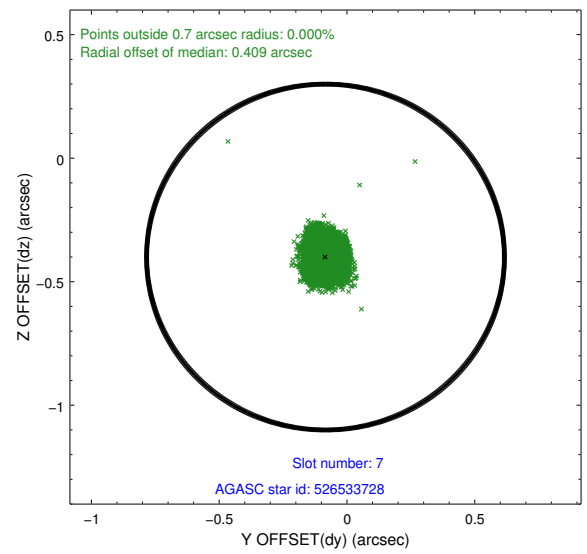
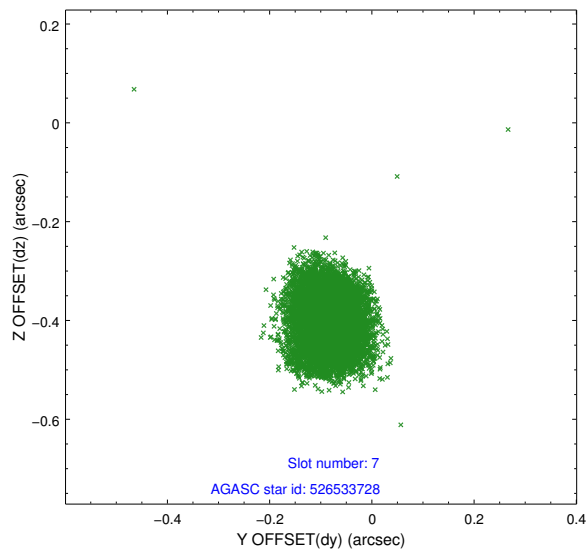
Time (s)



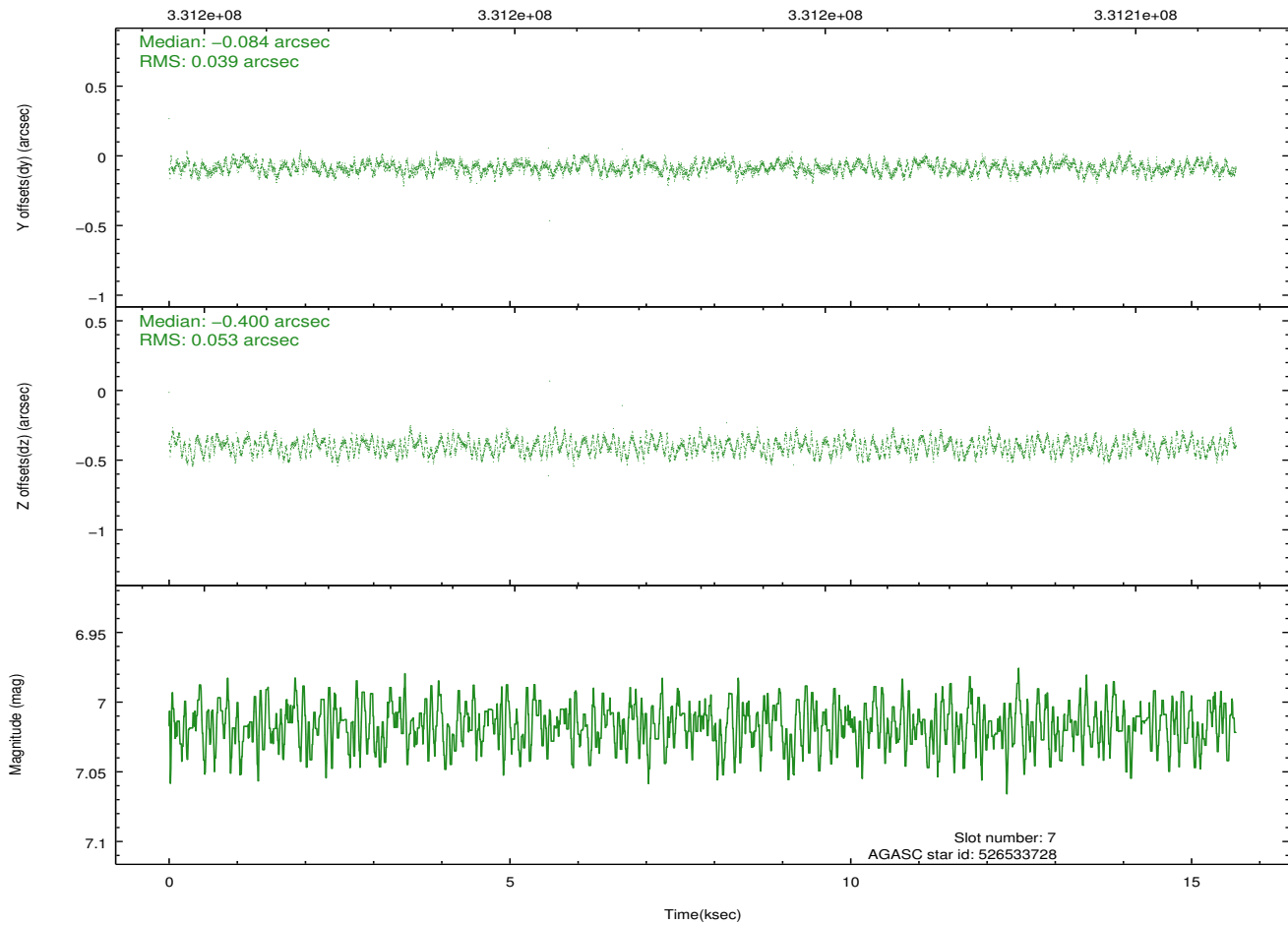
2.4.4 Slot 6



2.4.5 Slot 7

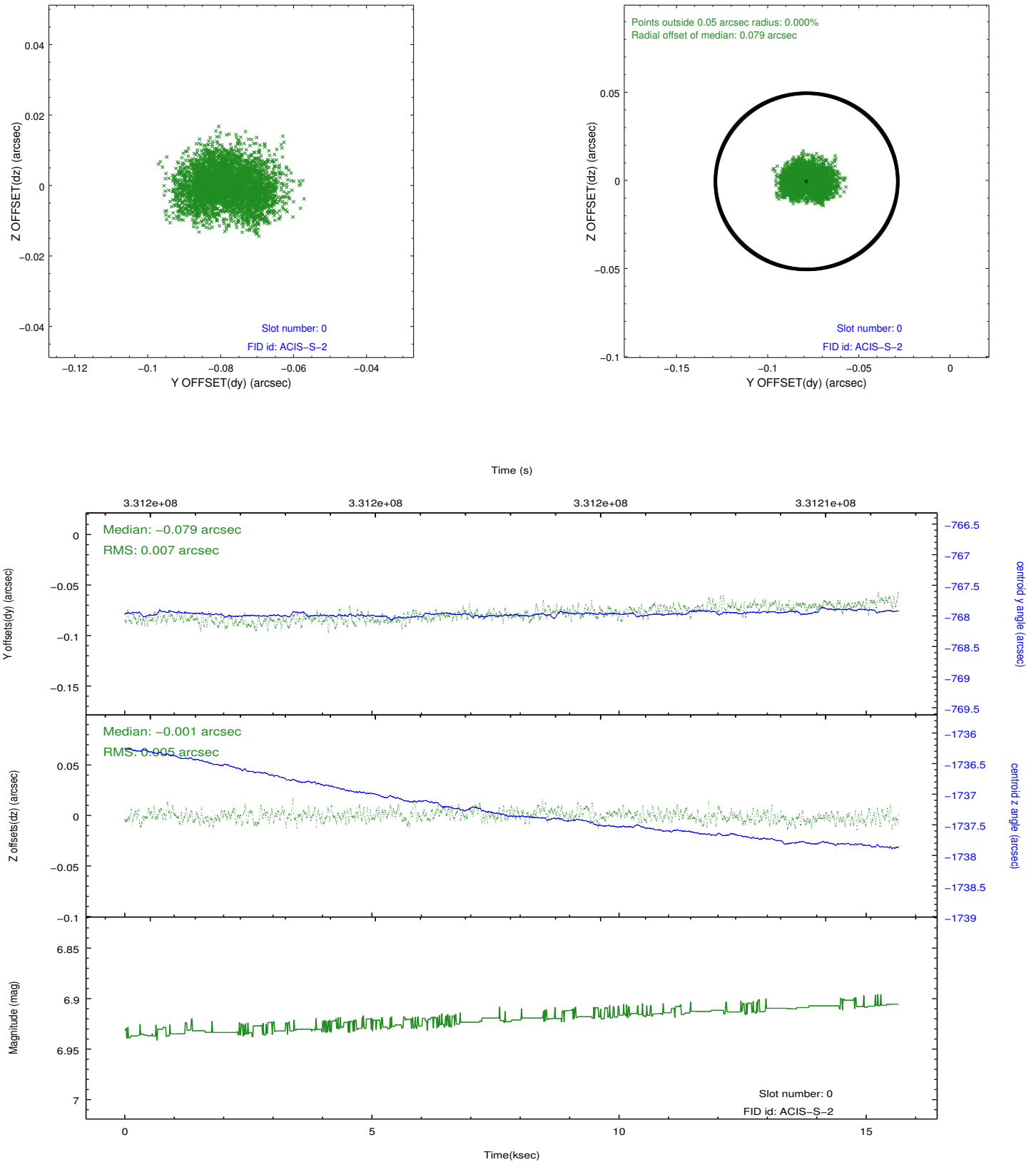


Time (s)

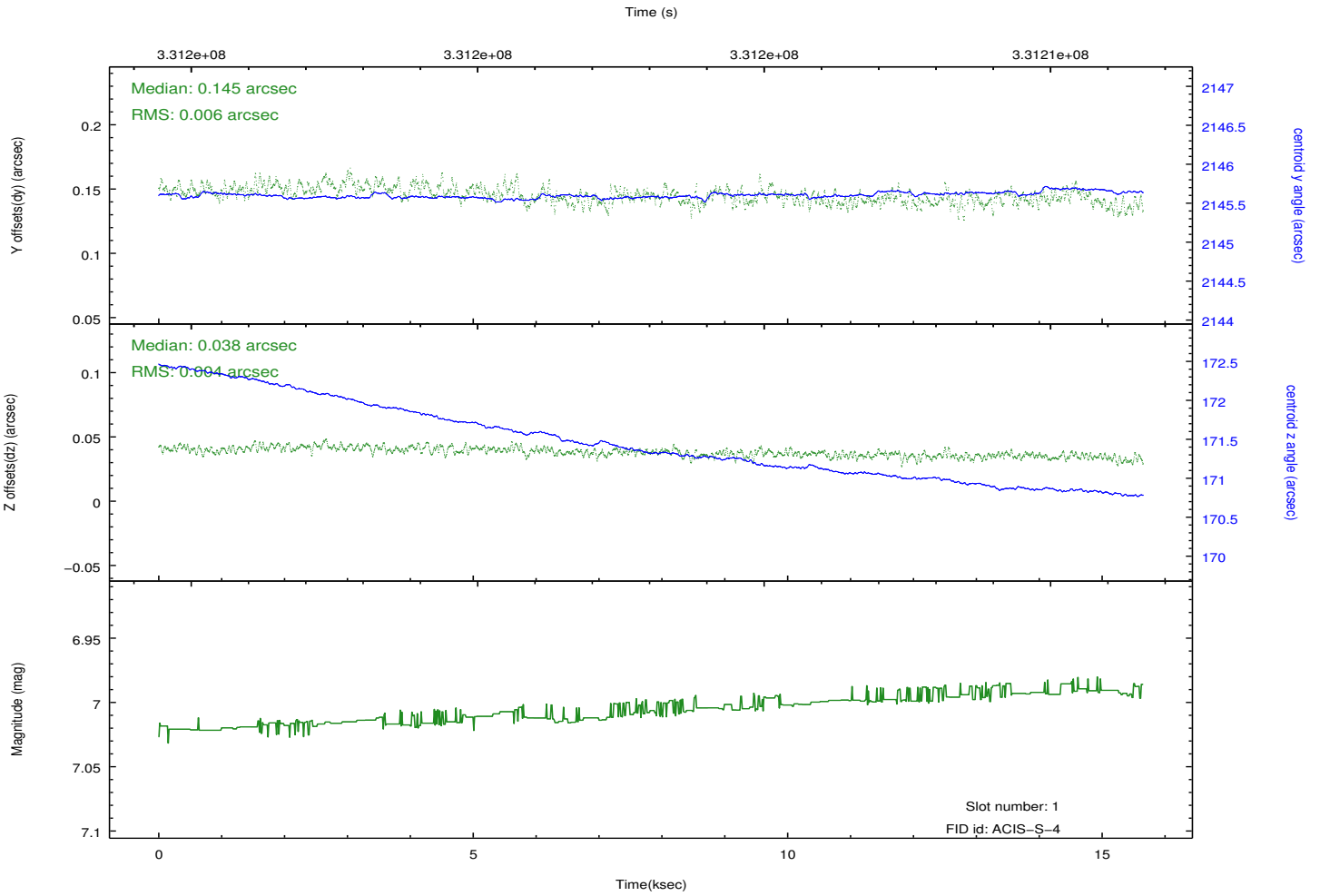
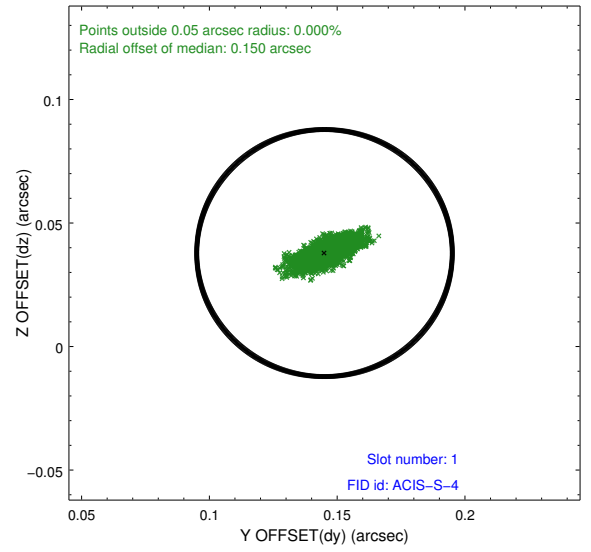
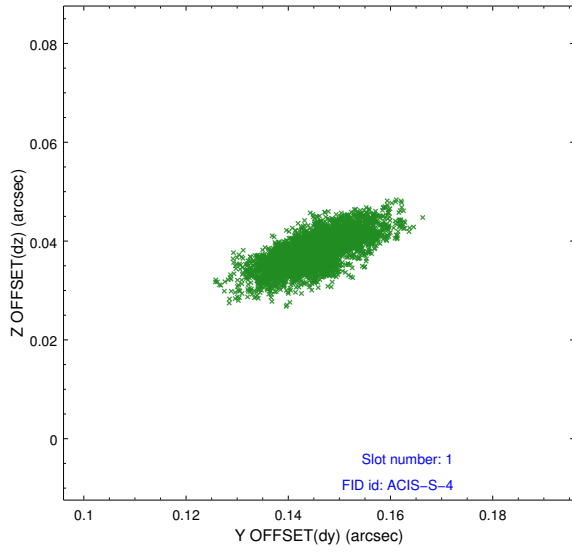


2.5 FID Slots

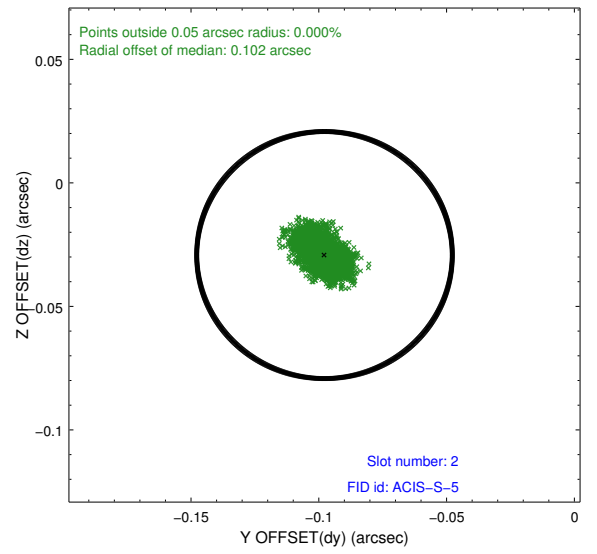
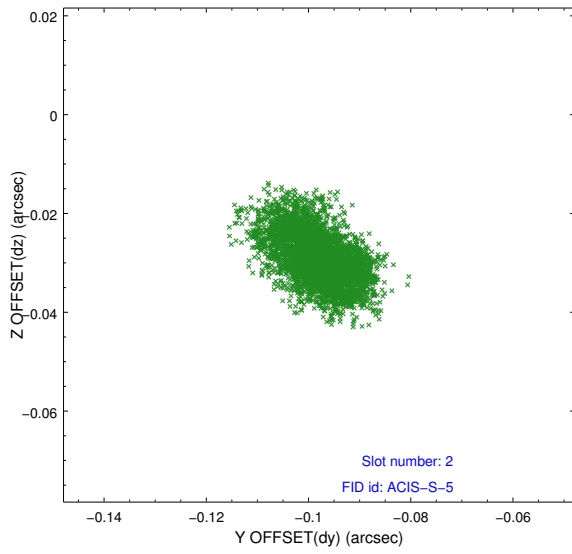
2.5.1 Slot 0



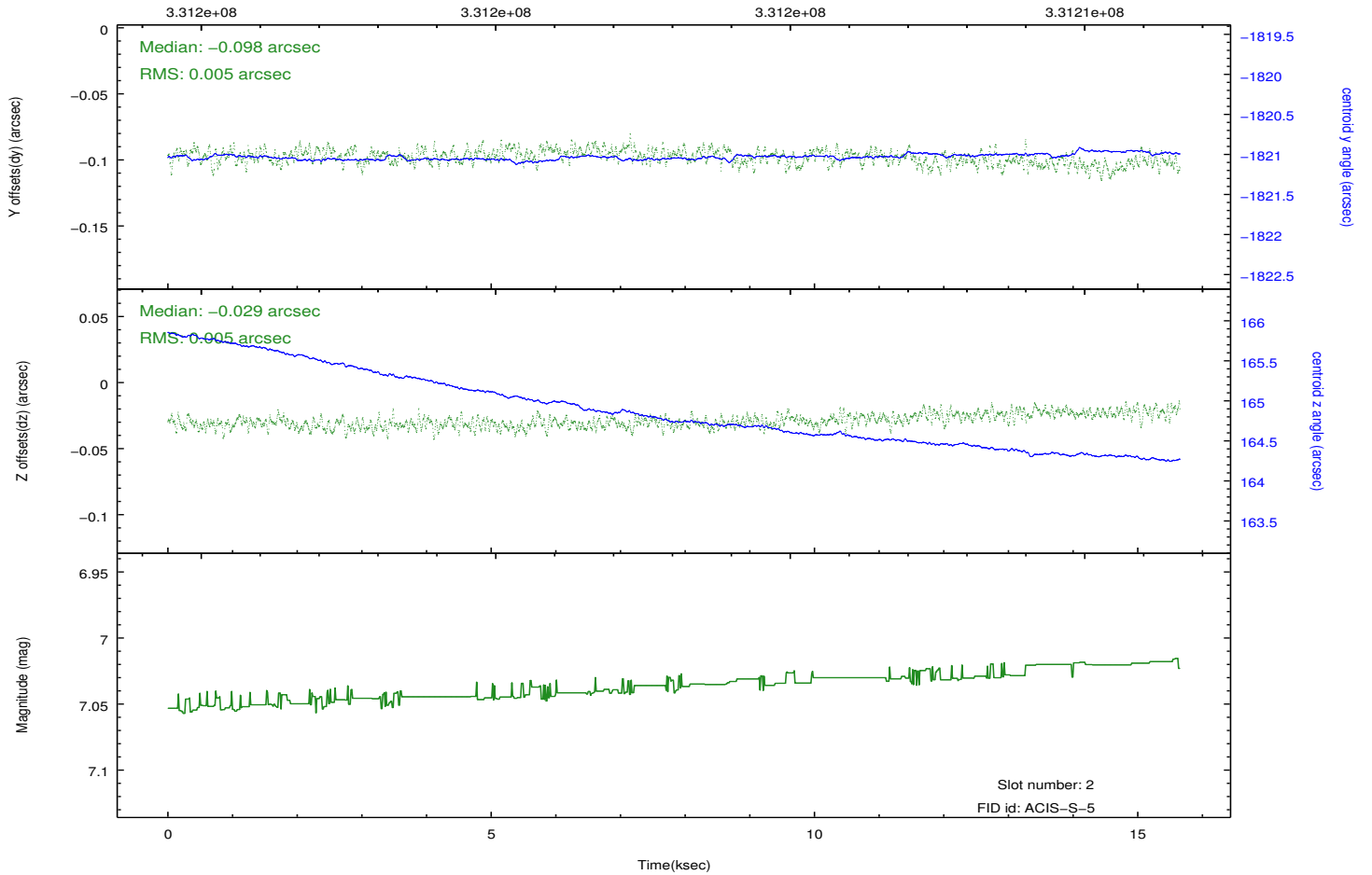
2.5.2 Slot 1



2.5.3 Slot 2



Time (s)



A Summary

A.1 Status

V&V Scientist	Beth Sundheim
V&V Date (YYYY-MM-DD)	2012.05.23
V&V Edition	1
V&V Disposition and Status	OK
V&V Charge Time	15.6488001

A.2 Comments