

V&V Reference Report

L2 ASCDS Version : 8.4.5

Observation 913 - L2 Version 3
Chandra X-Ray Center

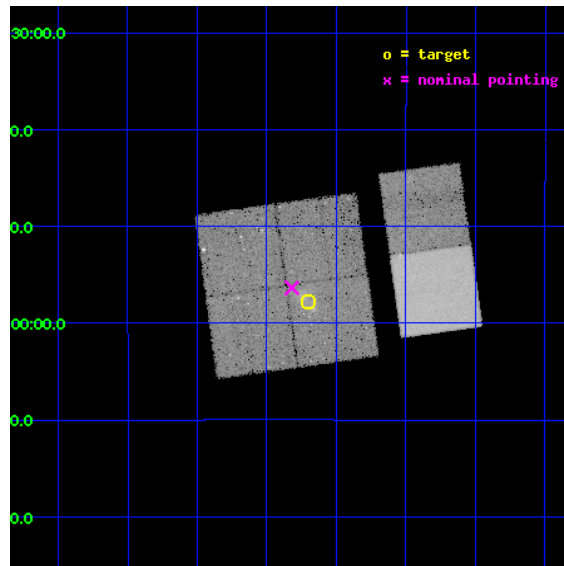
L2 Processing Date : Sep 1 2012

Contents

1	Front	2
2	OBI	3
2.1	OBI	3
2.1.1	Images	3
2.1.2	Bias	3
2.1.3	Parameters	4
2.1.4	Events	4
2.2	Compared Parameters	5
2.3	Aspect	6
2.4	Star Slots	9
2.4.1	Slot 3	9
2.4.2	Slot 4	10
2.4.3	Slot 5	11
2.4.4	Slot 6	12
2.4.5	Slot 7	13
2.5	FID Slots	14
2.5.1	Slot 0	14
2.5.2	Slot 1	15
2.5.3	Slot 2	16
A	Summary	17
A.1	Status	17
A.2	Comments	17

1 Front

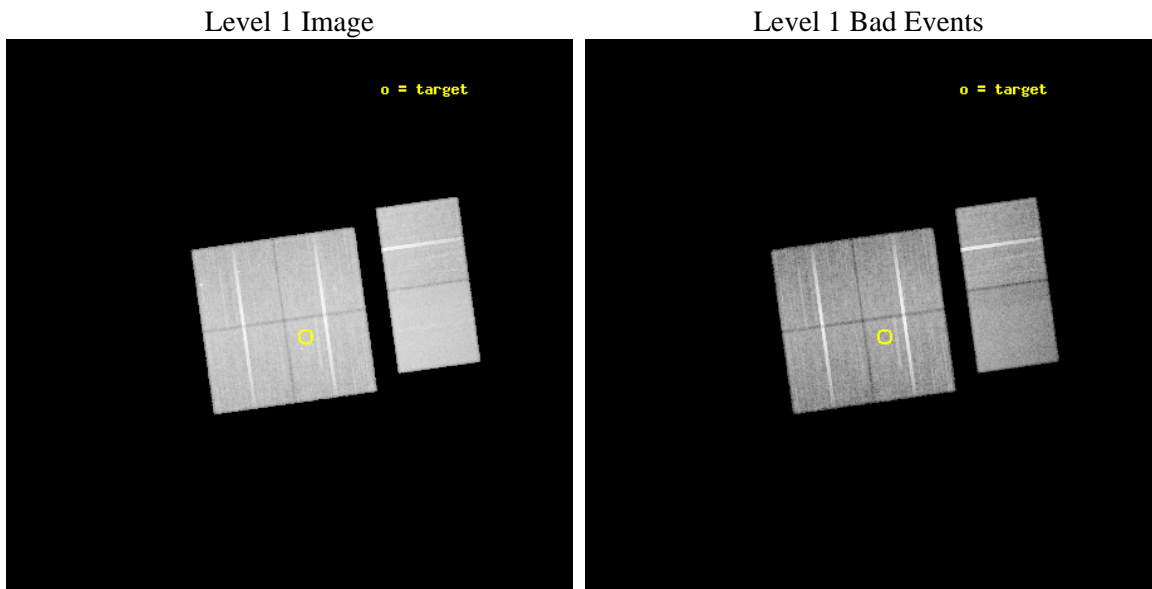
seq_num	800089	Sequence number
obs_id	913	Observation id
title	THE CLUSTER X-RAY TEMPERATURE FUNCTION AT Z>0.6	Proposal title
observer	Dr. Harald Ebeling	Principal investigator
object	CL J0152.7-1357	Source name
dtycycle	0	
cycle	P	events from which exps? Prim/Second/Both
ra_targ	28.175	Observer's specified target RA [deg]
dec_targ	-13.9633	Observer's specified target Dec [deg]
ra_nom	28.204821402803	Nominal RA [deg]
dec_nom	-13.939350108121	Nominal Dec [deg]
roll_nom	82.016229718679	Nominal Roll [deg]
revision	3	Processing version of data
ontime	36950.35907416	Sum of GTIs [s]
livetime	36482.471378728	Livetime [s]
ontime0	36950.359064162	Sum of GTIs [s]
ontime1	36953.600034401	Sum of GTIs [s]
ontime2	36953.600034401	Sum of GTIs [s]
ontime3	36950.35907416	Sum of GTIs [s]
ontime6	36950.359044239	Sum of GTIs [s]
ontime7	36953.600034401	Sum of GTIs [s]
l2events	216232	Number of level 2 events



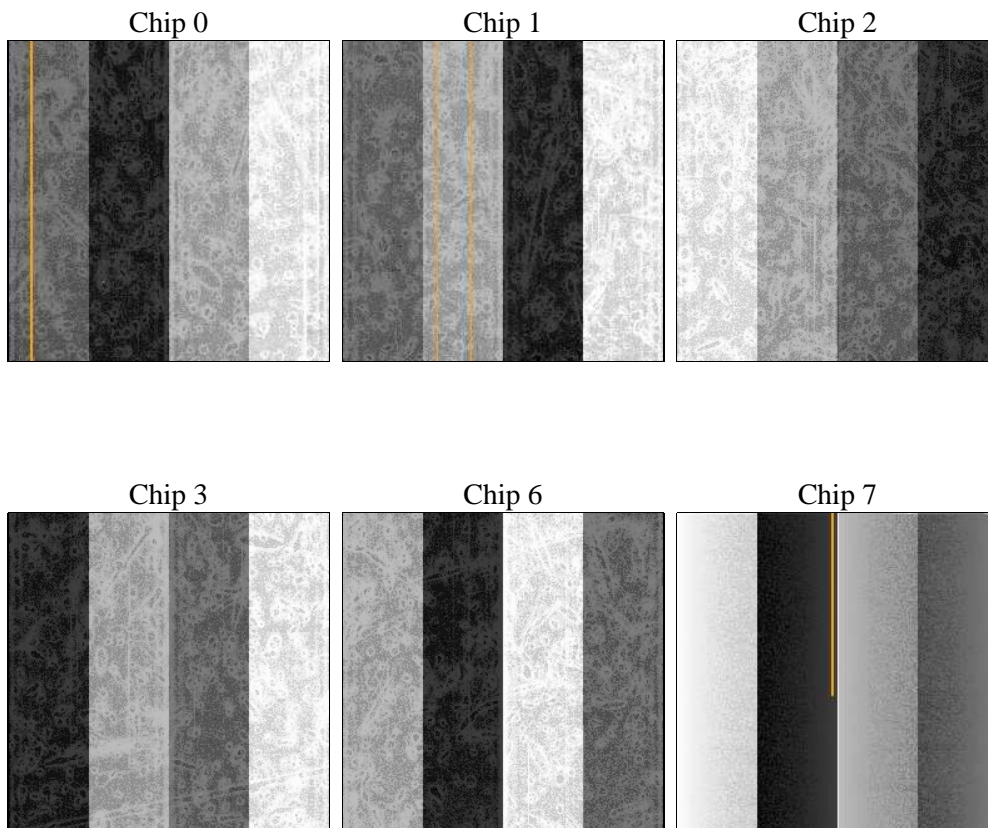
2 OBI

2.1 OBI

2.1.1 Images



2.1.2 Bias



2.1.3 Parameters

obi_num	0	Obi number	sched_exp_time	37000.000000	[s] Scheduled observation exposure time
ascdsver	8.4.5	Processing system revision	ontime	36950.35907416	Sum of GTIs [s]
caldbver	4.5.1.1	 	ontime0	36950.359064162	Sum of GTIs [s]
date	2012-09-01T16:02:51	Date and time of file creation	ontime1	36953.600034401	Sum of GTIs [s]
revision	3	Processing version of data	ontime2	36953.600034401	Sum of GTIs [s]
			ontime3	36950.35907416	Sum of GTIs [s]
			ontime6	36950.359044239	Sum of GTIs [s]
			ontime7	36953.600034401	Sum of GTIs [s]
			l1events	1321809	Number of level 1 events

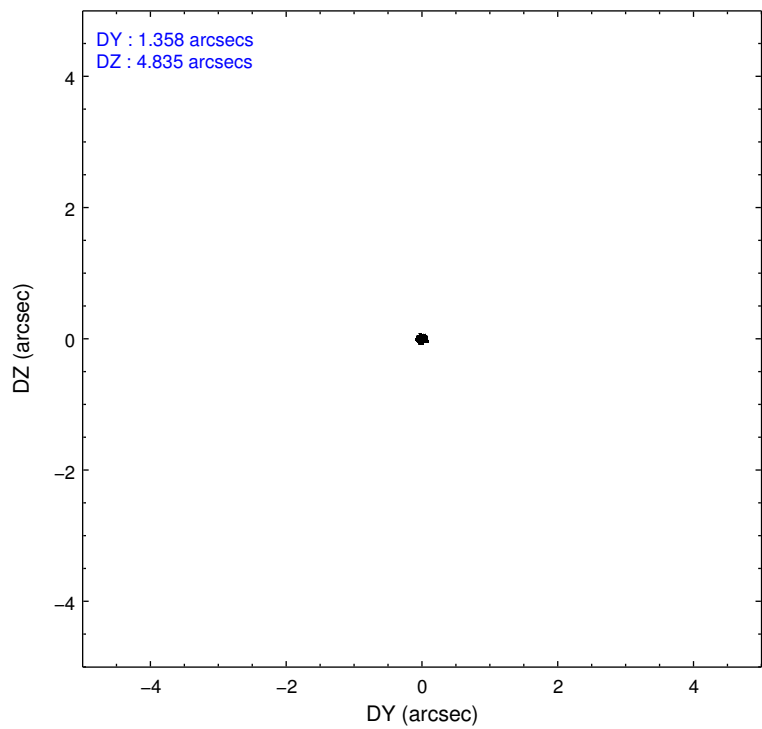
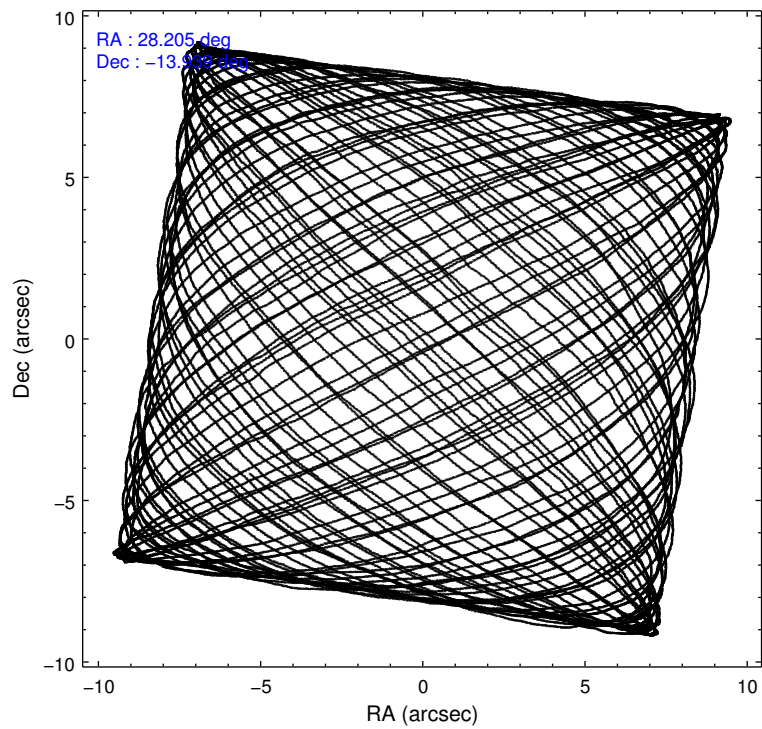
2.1.4 Events

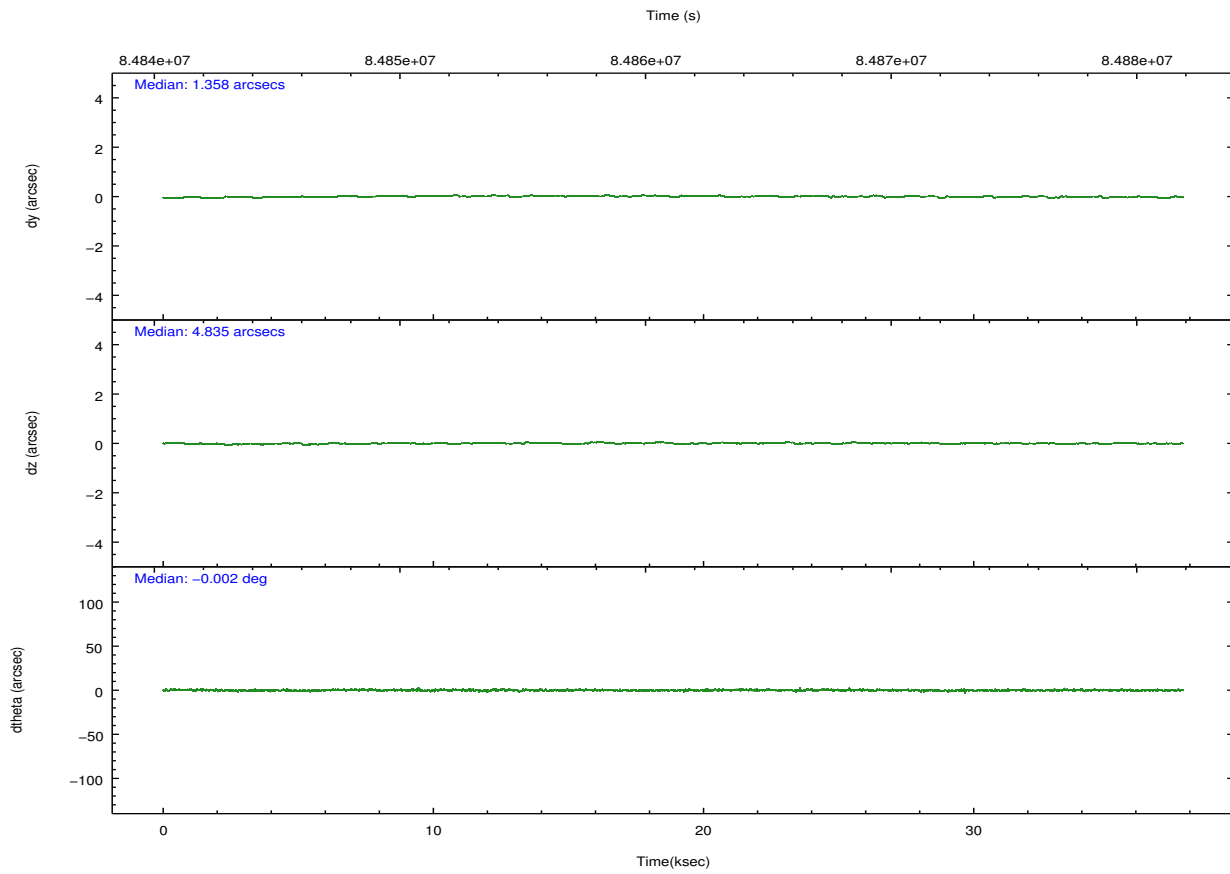
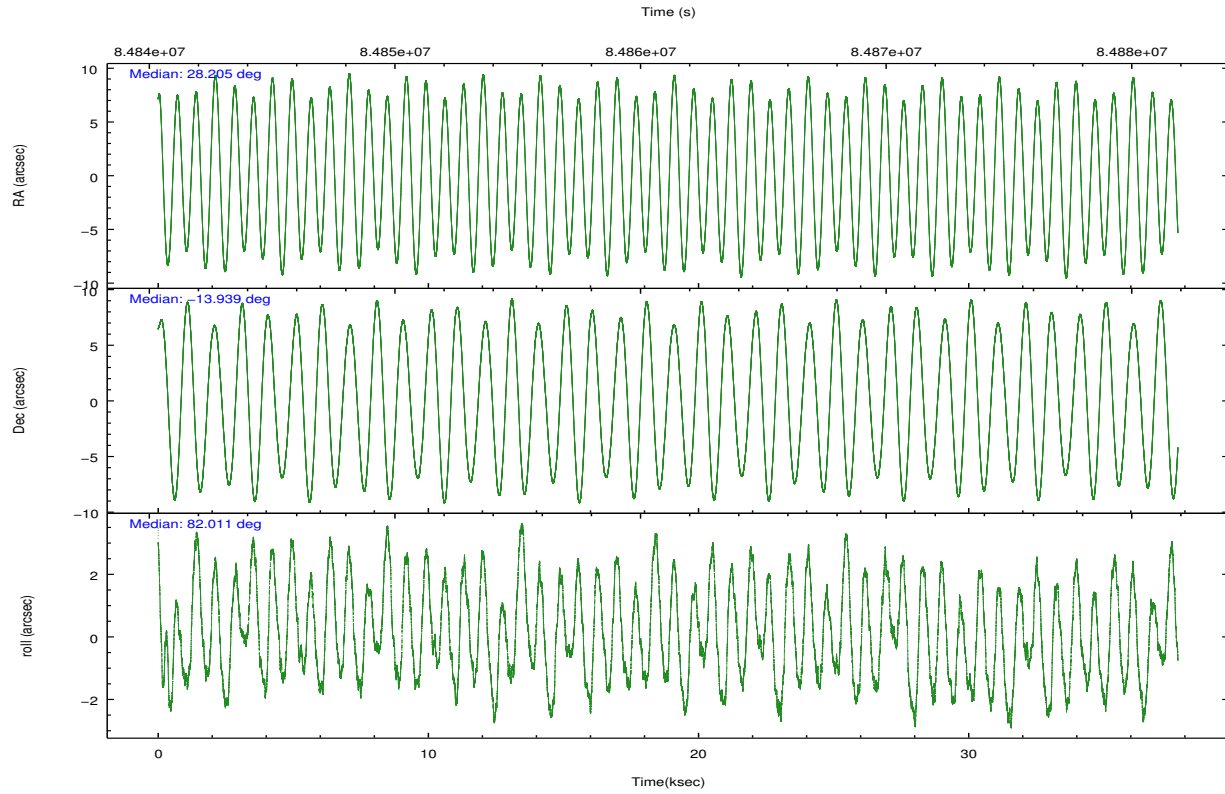
	ccd 0	ccd 1	ccd 2	ccd 3	ccd 6	ccd 7		ccd 0	ccd 1	ccd 2	ccd 3	ccd 6	ccd 7
level 1 events	199468	199875	215684	217757	225236	263789	grade 0 events	11805	10688	10196	12424	10170	10222
rejected events	173038	173931	191817	191552	200434	153610		5%	5%	4%	5%	4%	3%
rejected %	86%	87%	88%	87%	88%	58%	grade 1 events	101	94	110	92	87	273
								0%	0%	0%	0%	0%	0%
							grade 2 events	5347	5223	4942	4894	4959	21578
								2%	2%	2%	2%	2%	8%
							grade 3 events	2560	2657	2330	2440	2445	10105
								1%	1%	1%	1%	1%	3%
							grade 4 events	2445	2637	2246	2288	2401	9851
								1%	1%	1%	1%	1%	3%
							grade 5 events	7481	7918	7080	7994	9028	25271
								3%	3%	3%	3%	4%	9%
							grade 6 events	4281	4741	4158	4164	4831	58439
								2%	2%	1%	1%	2%	22%
							grade 7 events	165448	165917	184622	183461	191315	128050
								82%	83%	85%	84%	84%	48%

2.2 Compared Parameters

Parameter	Planned	Actual	Parameter	Planned	Actual
Instrument	ACIS	ACIS	Obspar format version number	7	7
Detector	ACIS-012367	ACIS-012367	Obspar file type	PREDICTED	ACTUAL
Grating	NONE	NONE	Obspar update status	NONE	UPDATED
Data mode	FAINT	FAINT	Number of optional ACIS chips dropped	0	0
Observation mode	POINTING	POINTING	On-chip summing requested	N	N
[deg] Pointing RA	28.215367	28.20482140280289	Subarray requested	NONE	NONE
[deg] Pointing Dec	-13.964904	-13.93935010812069	Alternating exposures requested	N	N
[deg] Pointing Roll	81.810081	82.01622971867931	[s] Primary exposure time	0.000000	3.2
[mm] SIM focus pos	-0.782348	-0.7809083437167272			
[mm] SIM defocus	0	0.001439871863259334			
[mm] SIM translation stage pos	-233.592463	-233.5924630914318			
[mm] SIM translation stage offset	0	1.008850210837409e-05			
[s] Observation start time (MET)	84842992.184000	84841755.952439			
Observation start date	2000-09-08T23:28:48	2000-09-08T23:09:15			
[s] Observation end time (MET)	84879992.184000	84880241.116384			
Observation end date	2000-09-09T09:45:28	2000-09-09T09:50:41			
Read mode	TIMED	TIMED			

2.3 Aspect



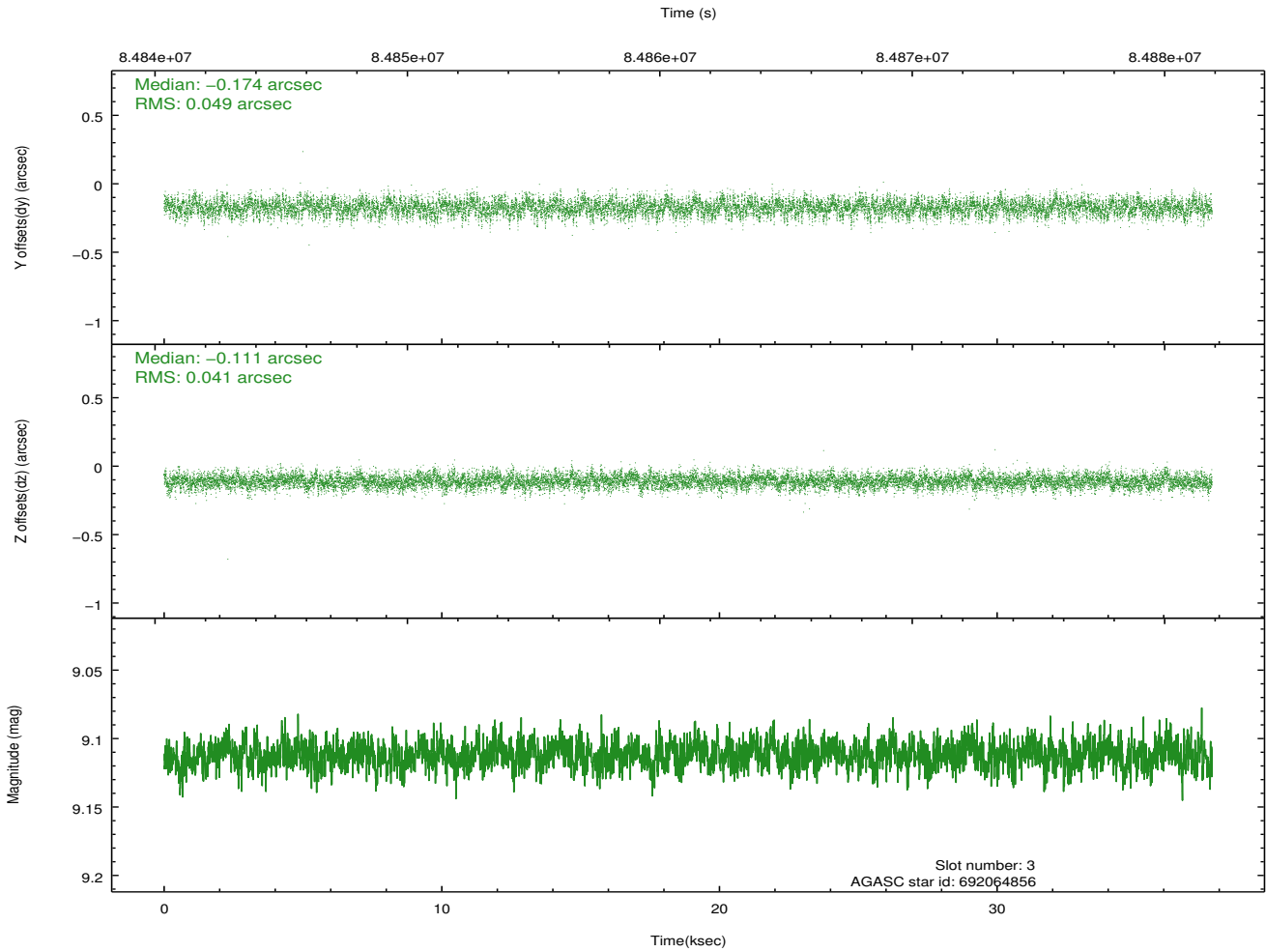
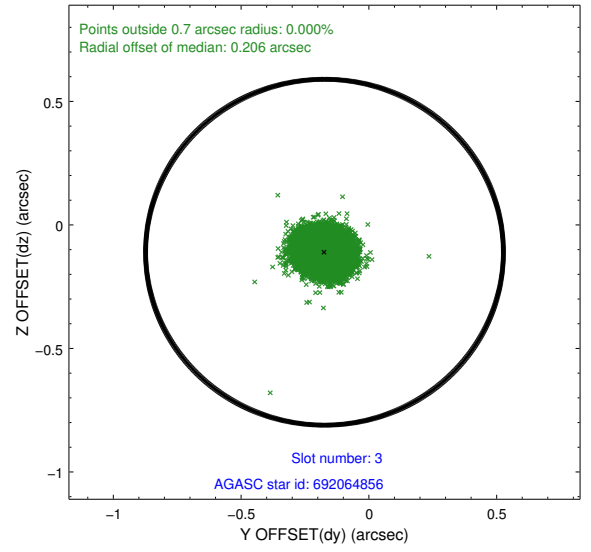
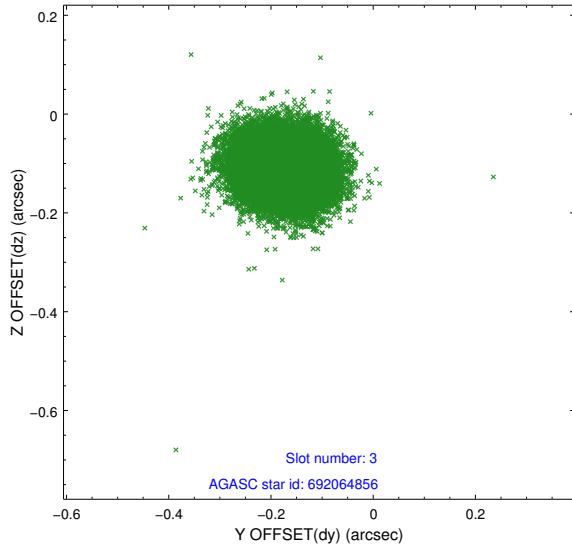


Slot Statistics

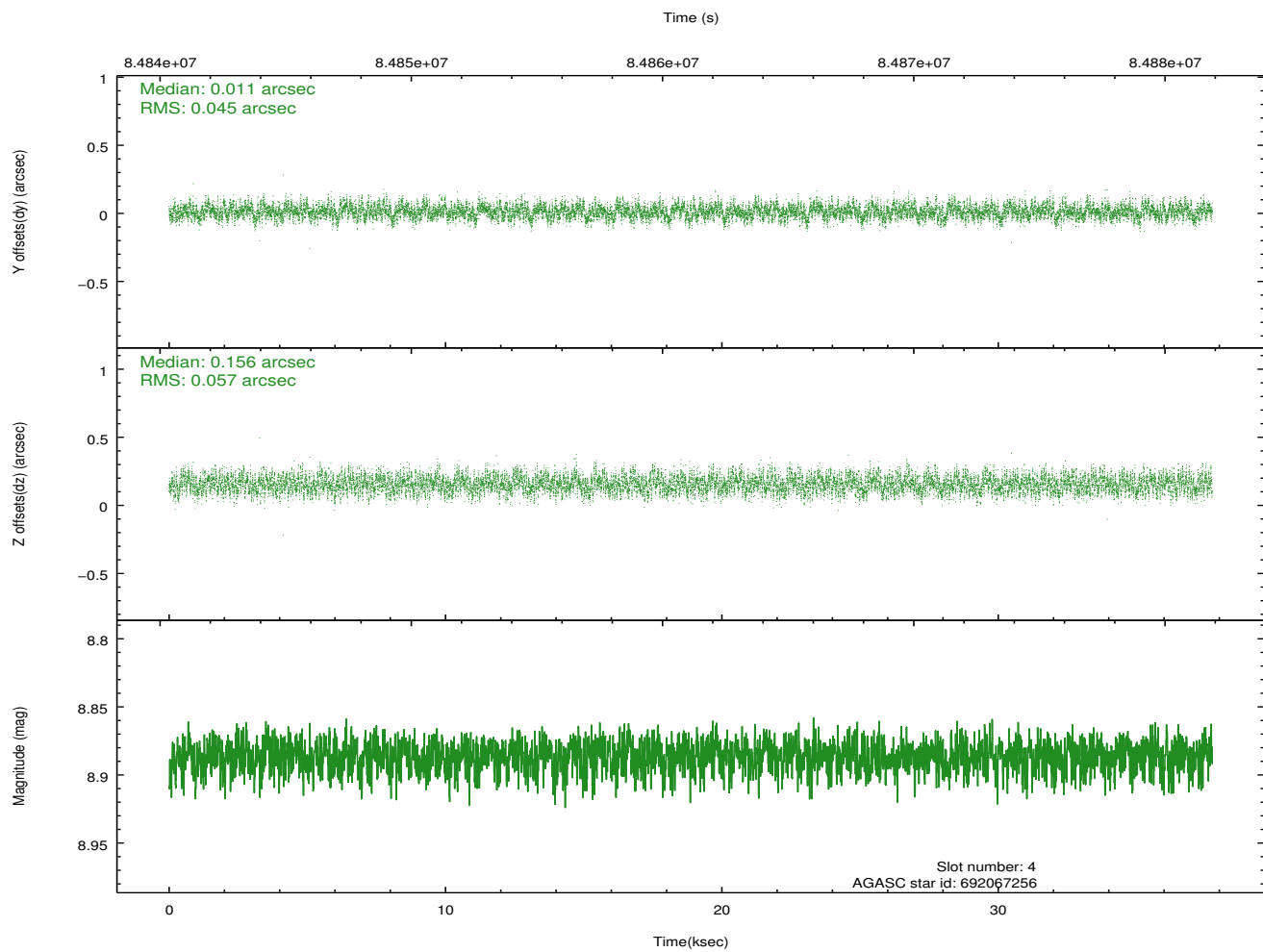
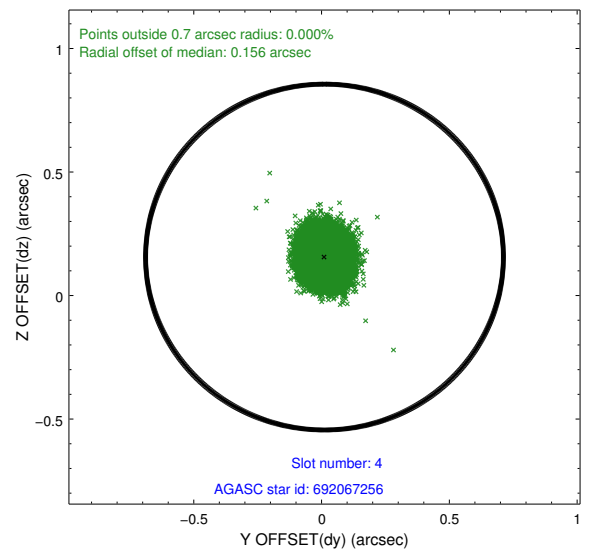
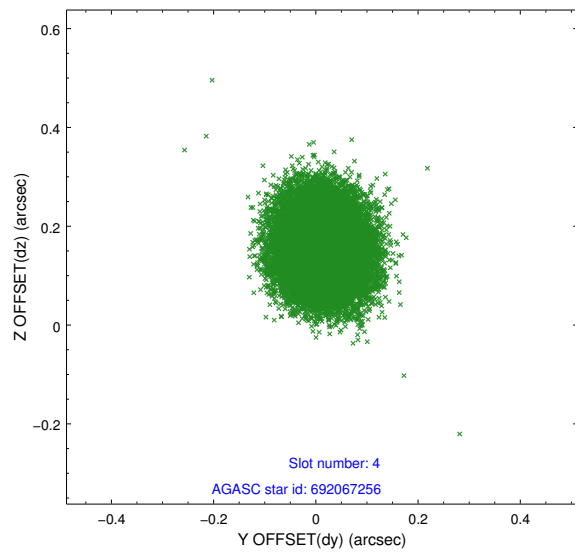
slot	status	id	mag	n_pts	med_dy	med_dz	dr1	dr2	ra	dec	mean_y	mean_z
0	FID	ACIS-I-2	7.15	9205	-0.032	-0.029	0.009	0.015	0.000000	0.000000	-755.72	-834.46
1	FID	ACIS-I-4	7.19	9206	-0.032	0.034	0.006	0.011	0.000000	0.000000	2158.32	1071.77
2	FID	ACIS-I-5	7.23	9206	-0.037	0.063	0.009	0.015	0.000000	0.000000	-1809.52	1069.66
3	GUIDE	692064856	9.11	18409	-0.174	-0.111	0.068	0.109	27.844359	-13.441810	1677.83	1554.70
4	GUIDE	692067256	8.89	18408	0.011	0.156	0.078	0.123	28.829272	-14.105112	-196.43	-2193.00
5	GUIDE	692068240	8.90	18403	0.057	-0.072	0.073	0.119	28.031376	-14.077680	-493.39	578.51
6	GUIDE	692065408	9.63	18400	0.130	-0.029	0.119	0.192	27.790543	-14.395351	-1745.95	1245.87
7	GUIDE	692064968	9.87	18399	-0.029	0.055	0.107	0.174	28.653268	-13.675432	1248.55	-1366.97

2.4 Star Slots

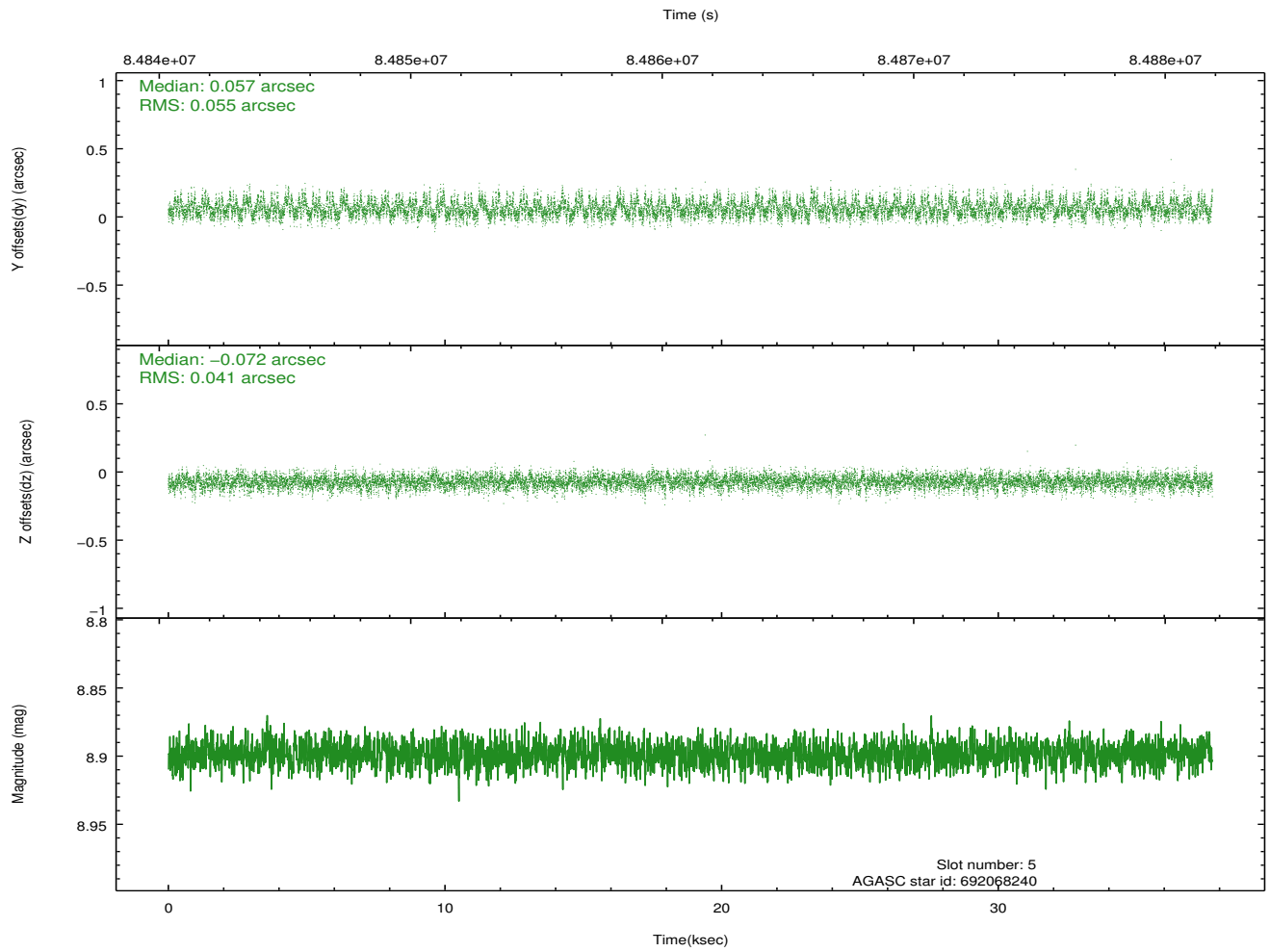
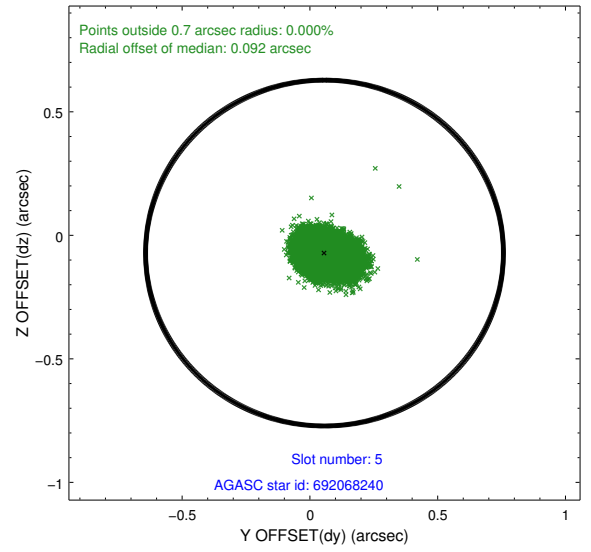
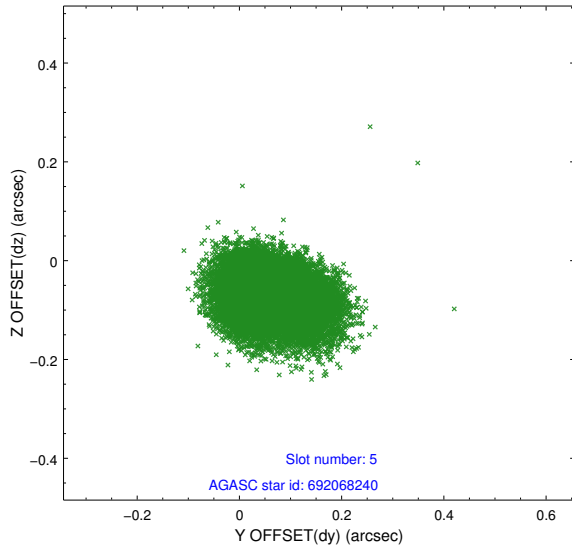
2.4.1 Slot 3



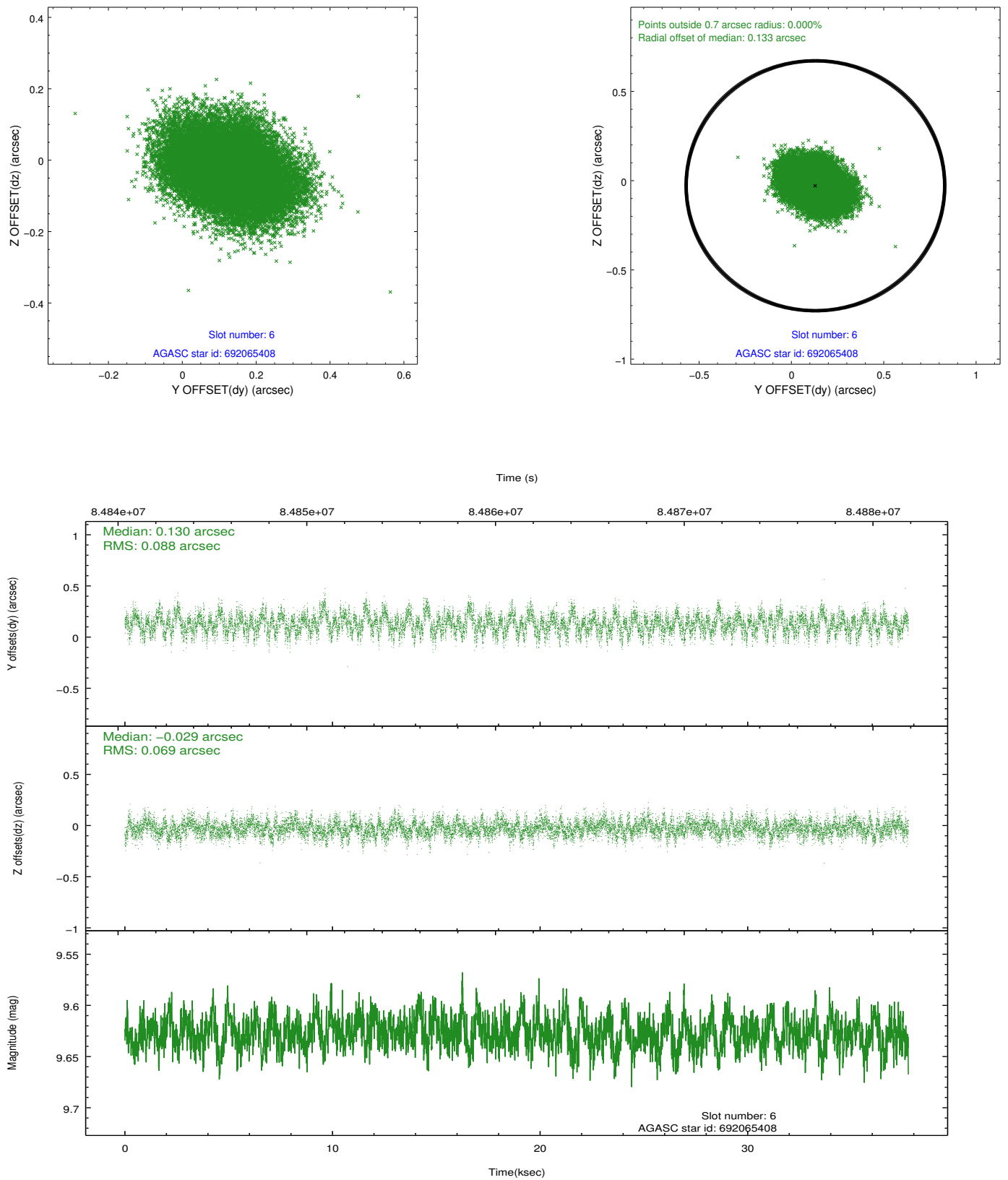
2.4.2 Slot 4



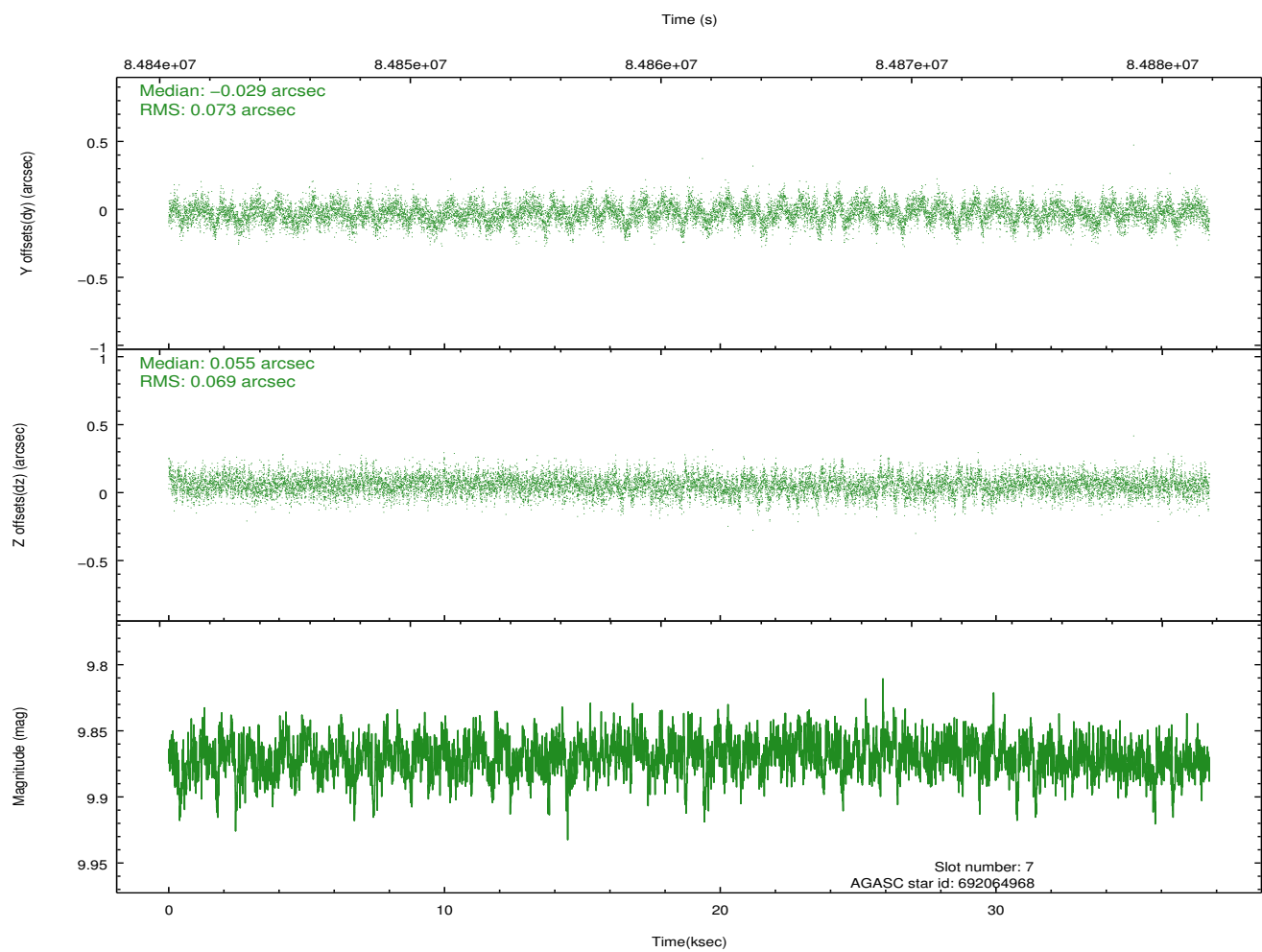
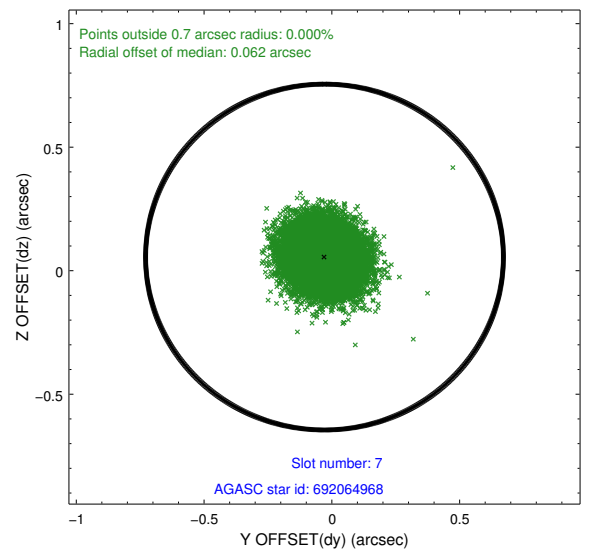
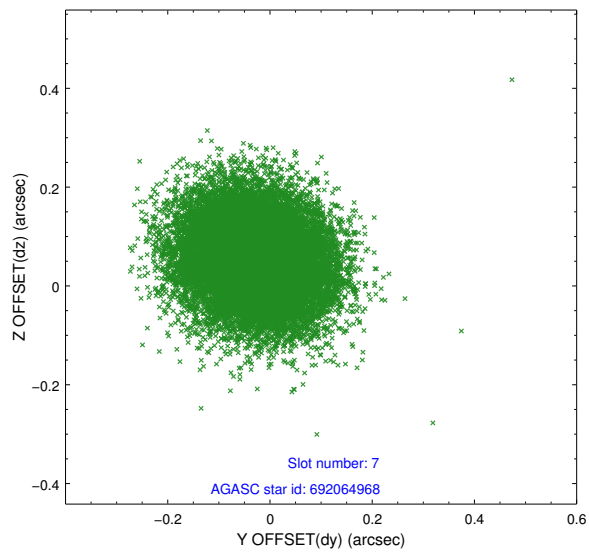
2.4.3 Slot 5



2.4.4 Slot 6

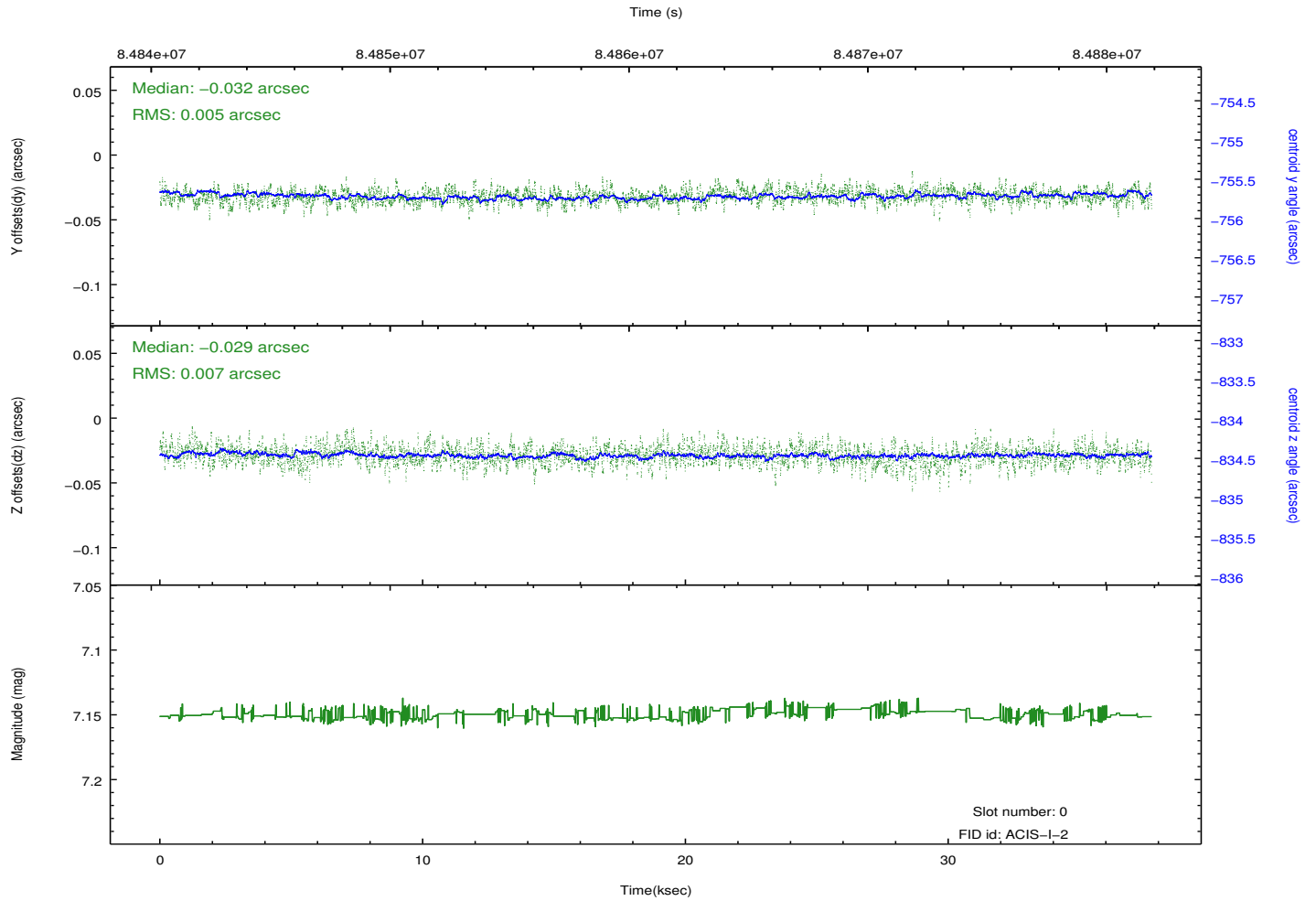
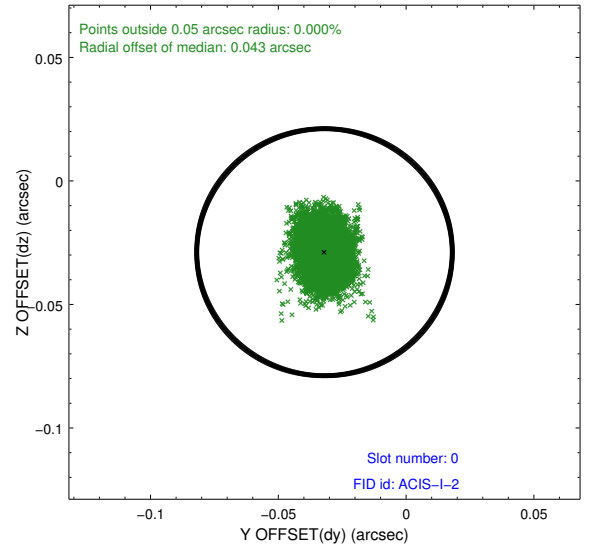
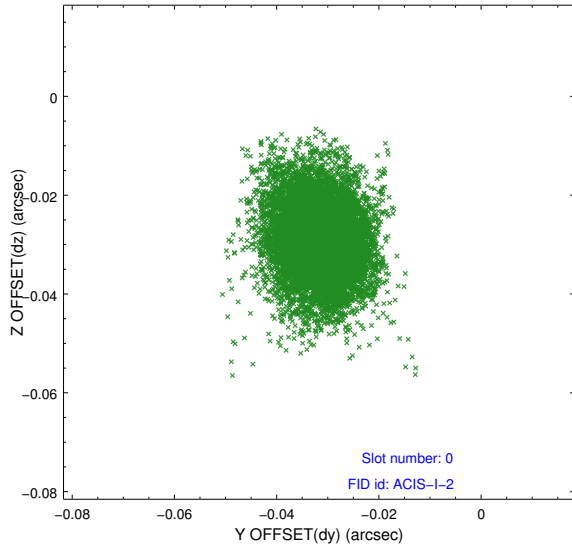


2.4.5 Slot 7

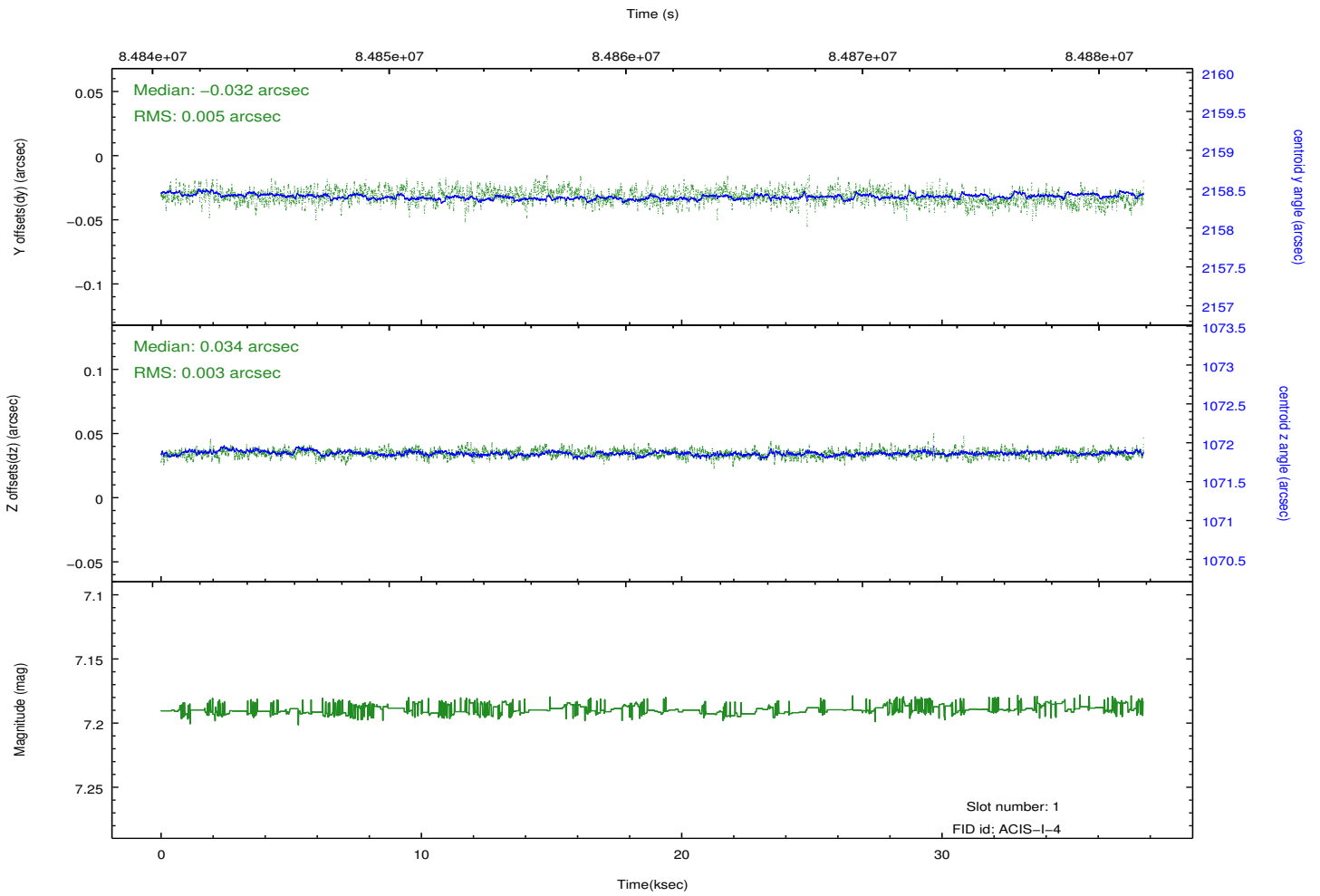
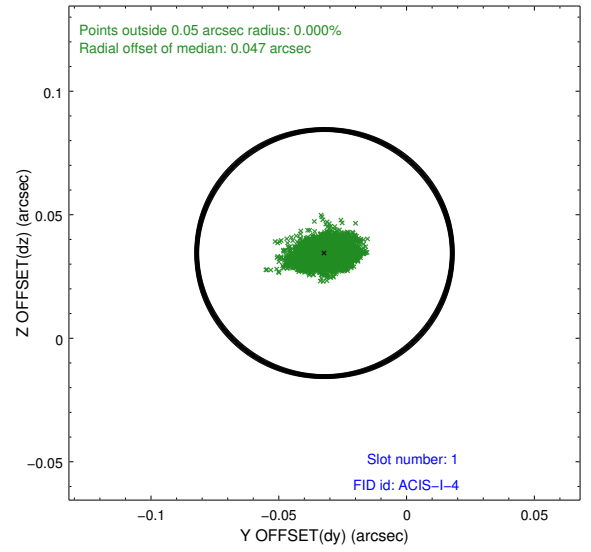
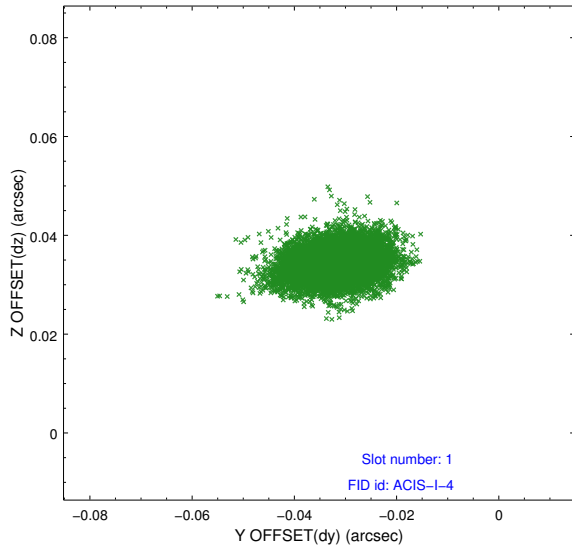


2.5 FID Slots

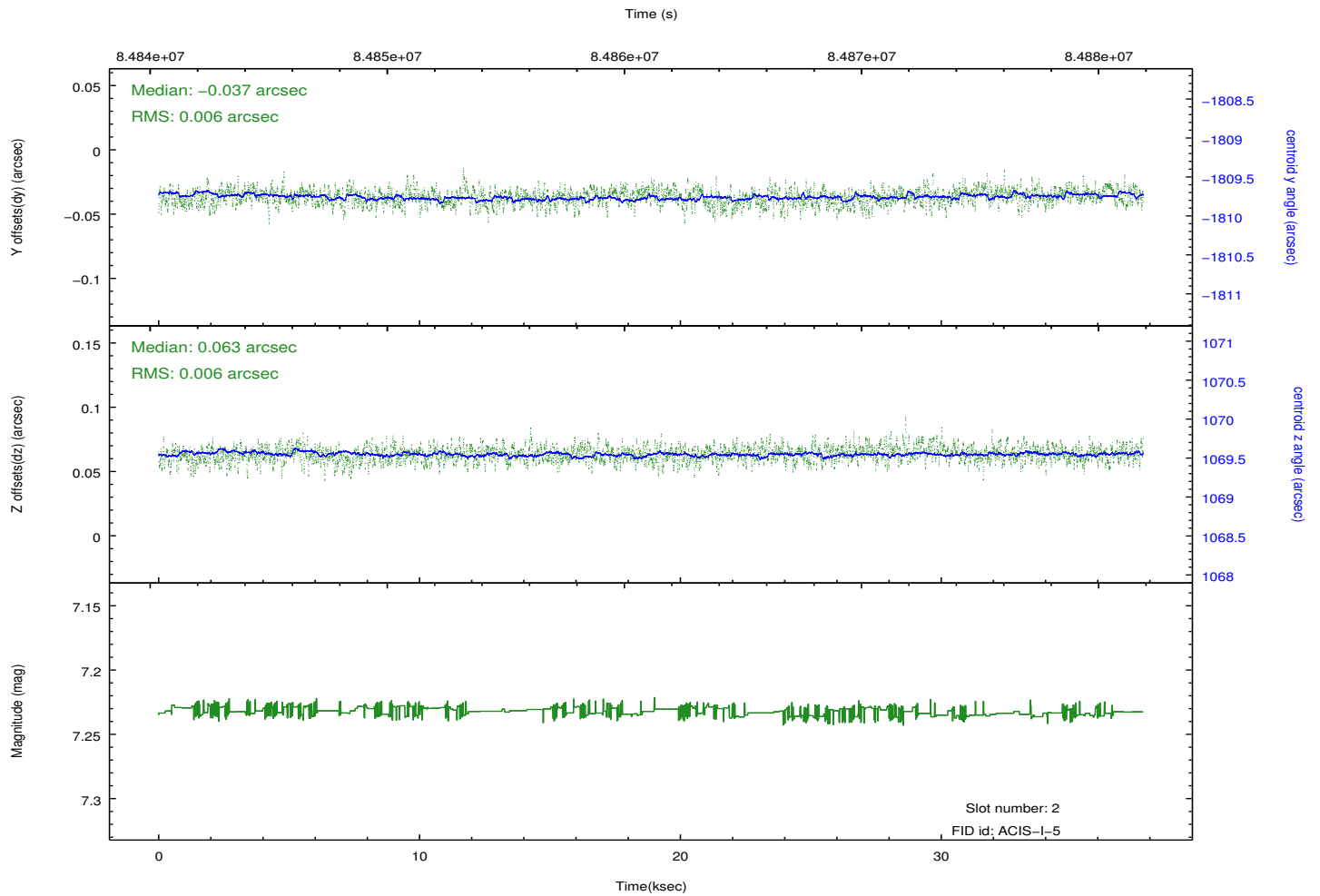
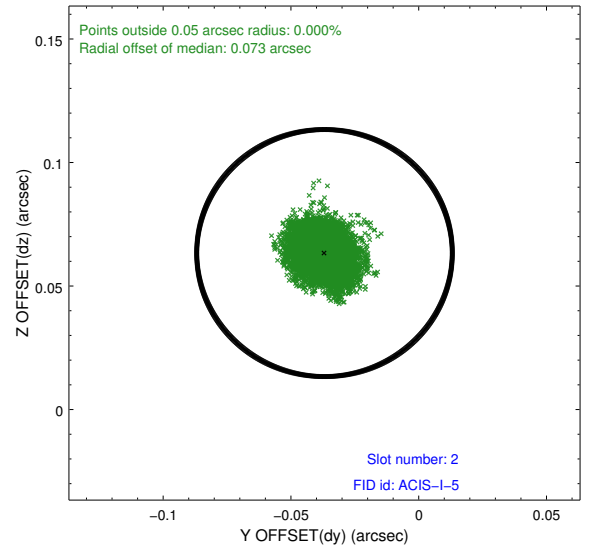
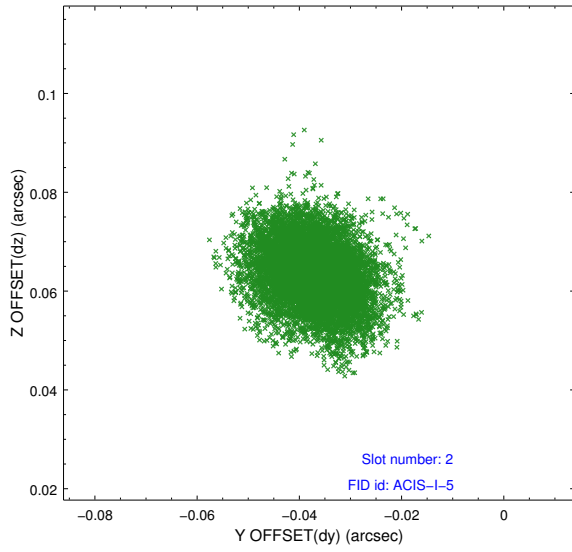
2.5.1 Slot 0



2.5.2 Slot 1



2.5.3 Slot 2



A Summary

A.1 Status

V&V Scientist	Beth Sundheim
V&V Date (YYYY-MM-DD)	2012.09.09
V&V Edition	1
V&V Disposition and Status	OK
V&V Charge Time	36.953

A.2 Comments