

V&V Reference Report

L2 ASCDS Version : 8.4.4

Observation 9183 - L2 Version 2
Chandra X-Ray Center

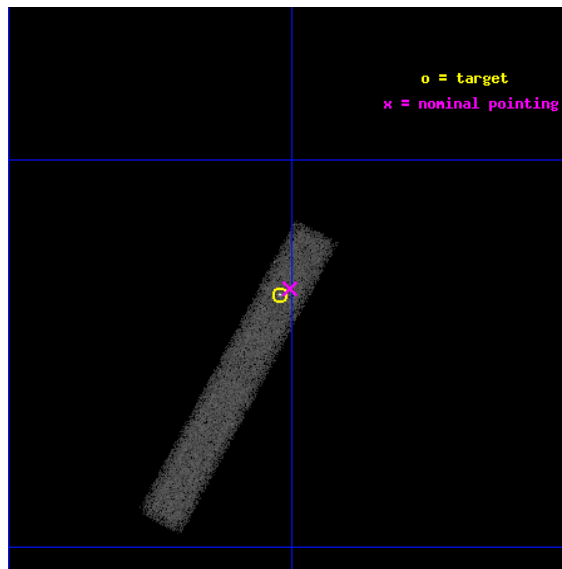
L2 Processing Date : May 18 2012

Contents

1	Front	2
2	OBI	3
2.1	OBI	3
2.1.1	Images	3
2.1.2	Bias	3
2.1.3	Parameters	4
2.1.4	Events	4
2.2	Compared Parameters	5
2.3	Aspect	6
2.4	Star Slots	9
2.4.1	Slot 3	9
2.4.2	Slot 4	10
2.4.3	Slot 5	11
2.4.4	Slot 6	12
2.4.5	Slot 7	13
2.5	FID Slots	14
2.5.1	Slot 0	14
2.5.2	Slot 1	15
2.5.3	Slot 2	16
A	Summary	17
A.1	Status	17
A.2	Comments	17

1 Front

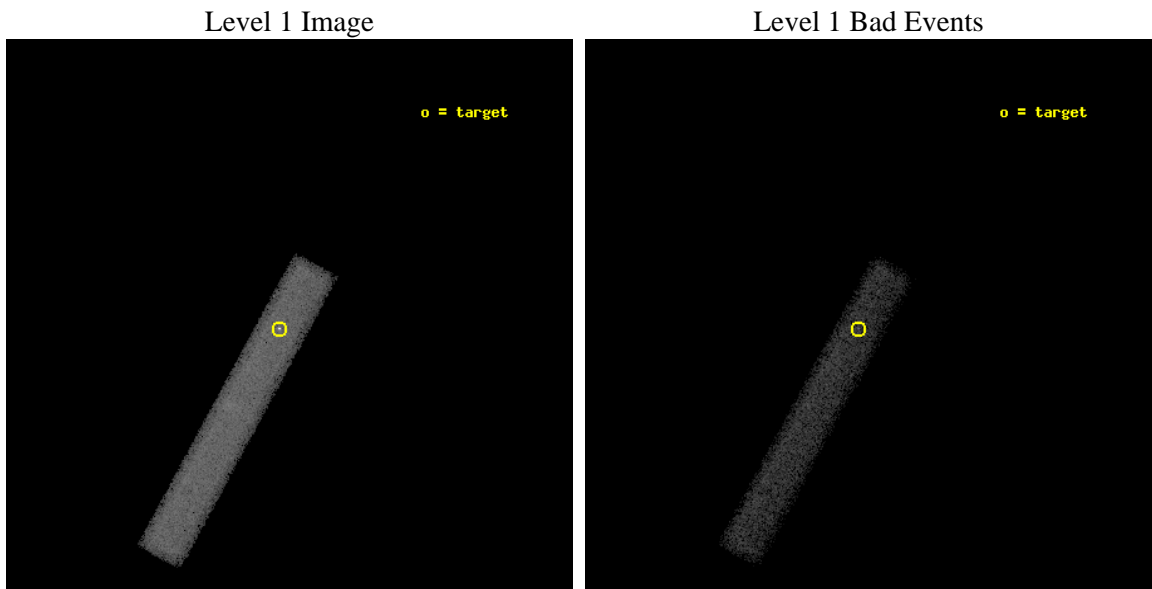
seq_num	701625	Sequence number
obs_id	9183	Observation id
title	Unraveling the accretion structure of the double-peaked emitter SDSS J2125-0813	Proposal title
observer	Dr. Iskra Strateva	Principal investigator
object	SDSS J2125-0813	Source name
dtcycle	0	
cycle	P	events from which exps? Prim/Second/Both
ra_targ	321.255	Observer's specified target RA [deg]
dec_targ	-8.224611	Observer's specified target Dec [deg]
ra_nom	321.25074581689	Nominal RA [deg]
dec_nom	-8.2222184790699	Nominal Dec [deg]
roll_nom	118.60215426612	Nominal Roll [deg]
revision	2	Processing version of data
ontime	40181.197605014	Sum of GTIs [s]
livetime	36442.225290236	Livetime [s]
ontime7	40181.197605014	Sum of GTIs [s]
l2events	35683	Number of level 2 events



2 OBI

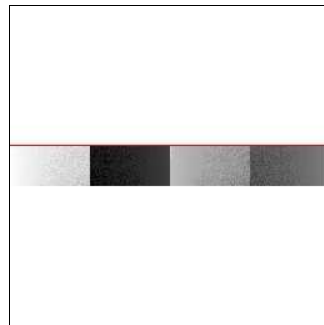
2.1 OBI

2.1.1 Images



2.1.2 Bias

Chip 7



2.1.3 Parameters

obi_num	0	Obi number	sched_exp_time	40000.000000	[s] Scheduled observation exposure time
ascdsver	8.4.4	Processing system revision	ontime	40181.197605014	Sum of GTIs [s]
caldbver	4.4.9	 	ontime7	40181.197605014	Sum of GTIs [s]
date	2012-05-18T03:50:28	Date and time of file creation	l1events	76469	Number of level 1 events
revision	2	Processing version of data			

2.1.4 Events

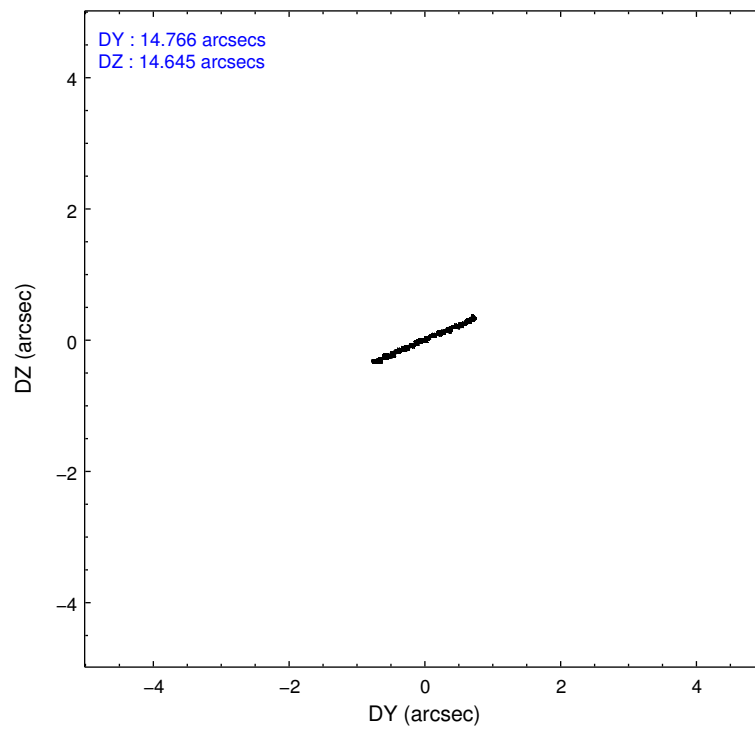
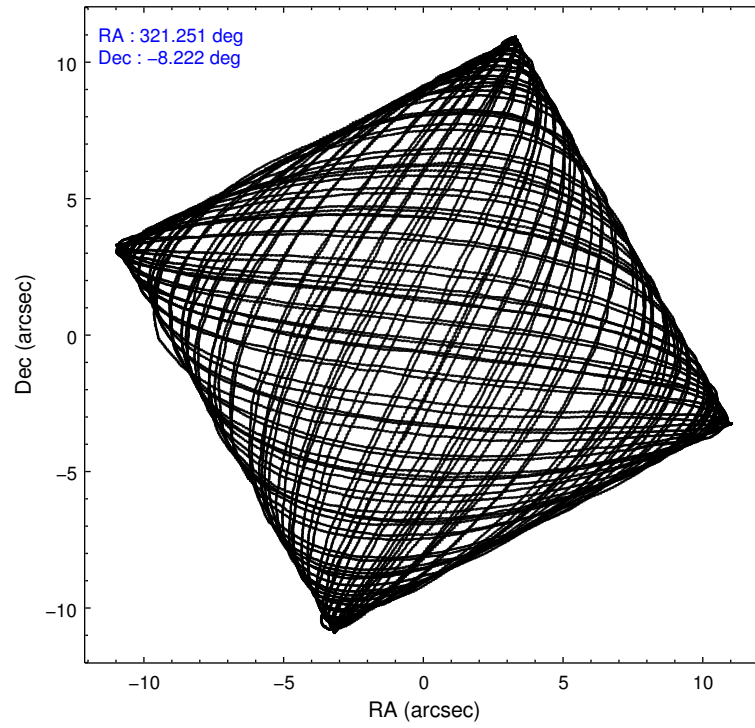
	ccd 7
level 1 events	76469
rejected events	39498
rejected %	51%

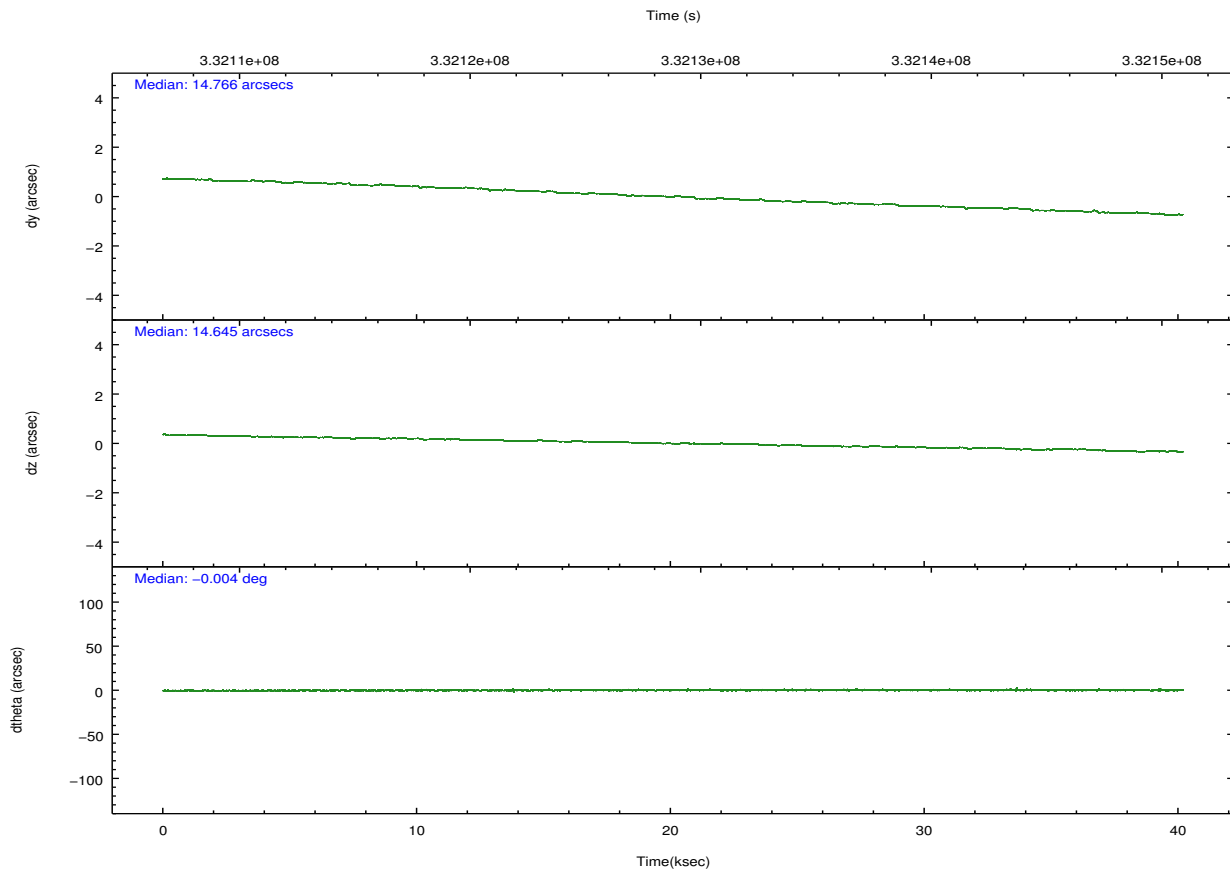
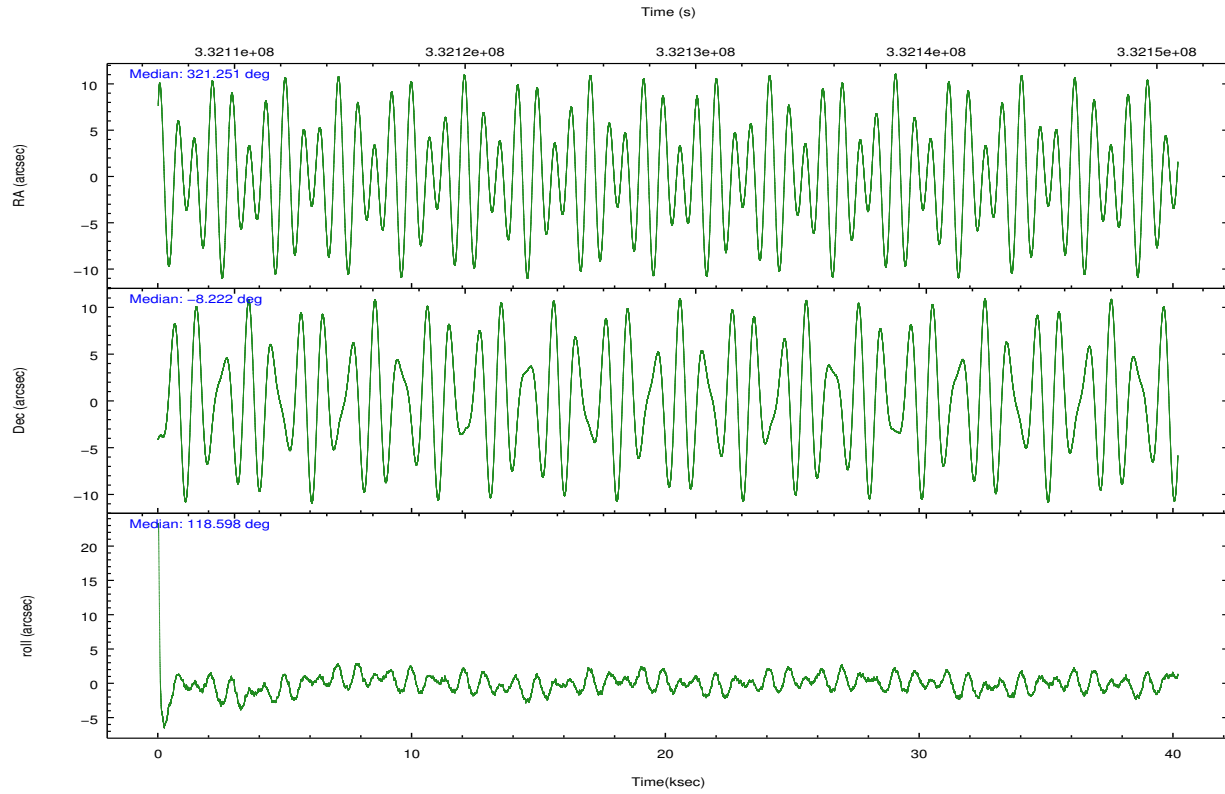
	ccd 7
grade 0 events	4306
	5%
grade 1 events	96
	0%
grade 2 events	7517
	9%
grade 3 events	4637
	6%
grade 4 events	4464
	5%
grade 5 events	6851
	8%
grade 6 events	16114
	21%
grade 7 events	32484
	42%

2.2 Compared Parameters

Parameter	Planned	Actual	Parameter	Planned	Actual
Instrument	ACIS	ACIS	Obspar format version number	7	7
Detector	ACIS-7	ACIS-7	Obspar file type	PREDICTED	ACTUAL
Grating	NONE	NONE	Obspar update status	NONE	UPDATED
Data mode	FAINT	FAINT	Number of optional ACIS chips dropped	0	0
Observation mode	POINTING	POINTING	On-chip summing requested	N	N
[deg] Pointing RA	321.274521	321.250745816886	Subarray requested	CUSTOM	1/8
[deg] Pointing Dec	-8.236130	-8.222218479069877	Subarray start row	449	449
[deg] Pointing Roll	118.448914	118.60215426612	Subarray row count	128	128
[mm] SIM focus pos	-0.684267	-0.6828225247311905	Alternating exposures requested	N	N
[mm] SIM defocus	0	0.001444936568705701	[s] Primary exposure time	0.000000	0.4
[mm] SIM translation stage pos	-190.132523	-190.1400660498719			
[mm] SIM translation stage offset	0	0.00754346686406393			
[s] Observation start time (MET)	332108901.184000	332108245.55973			
Observation start date	2008-07-10T20:27:16	2008-07-10T20:17:25			
[s] Observation end time (MET)	332148901.184000	332149649.41176			
Observation end date	2008-07-11T07:33:56	2008-07-11T07:47:29			
Read mode	TIMED	TIMED			

2.3 Aspect



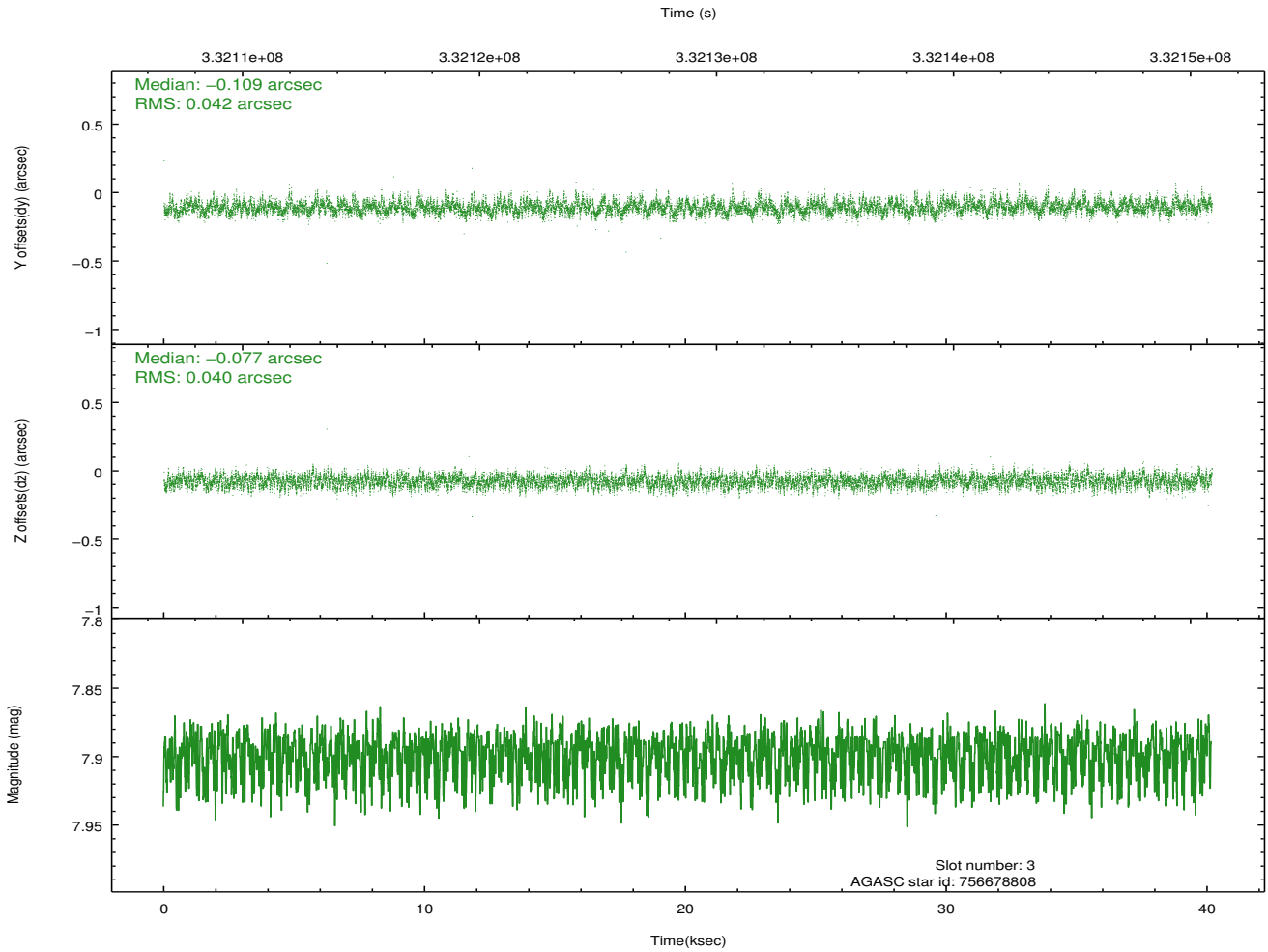
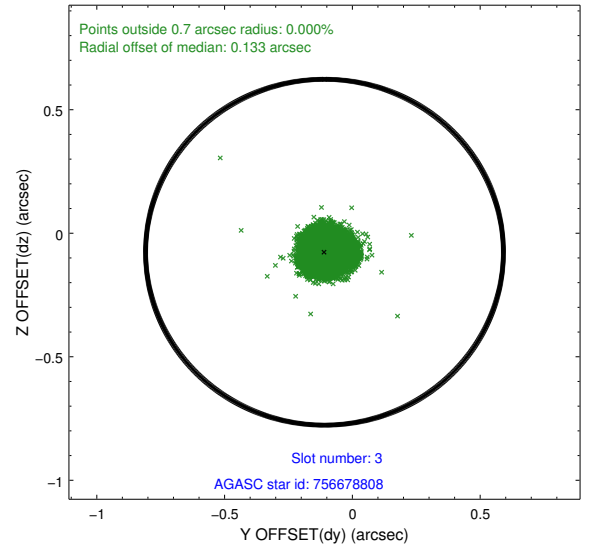
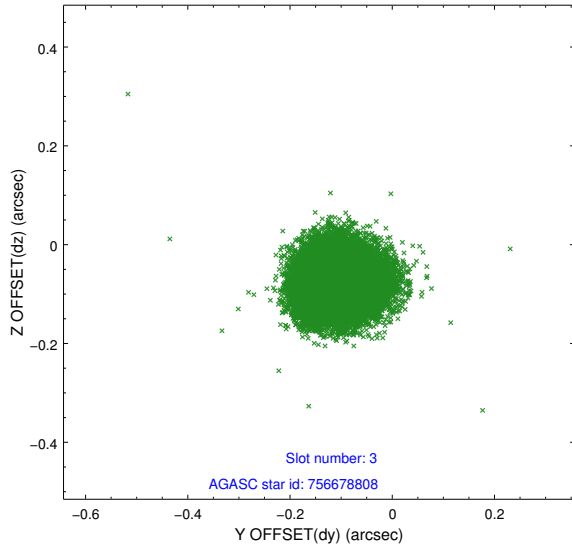


Slot Statistics

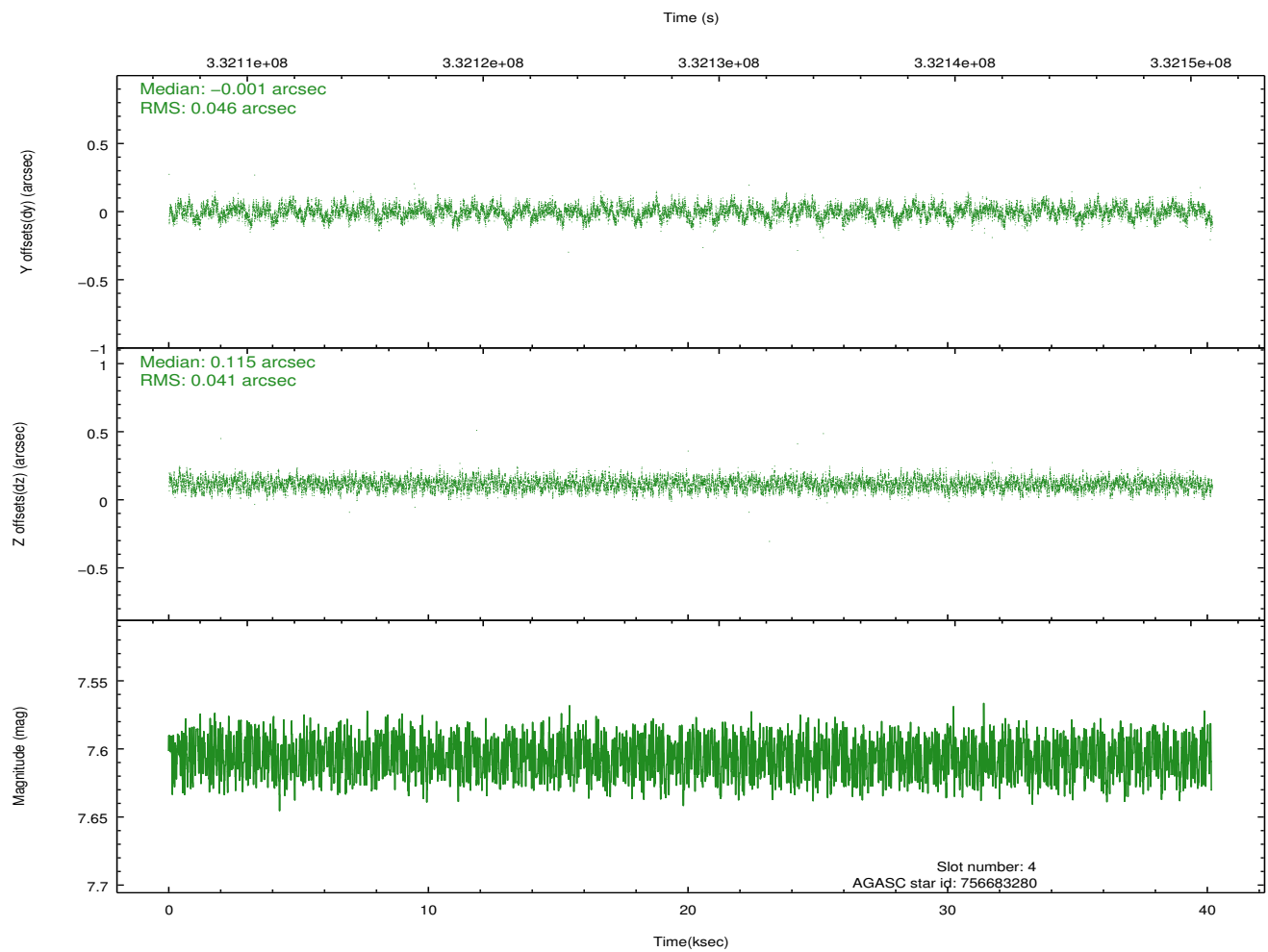
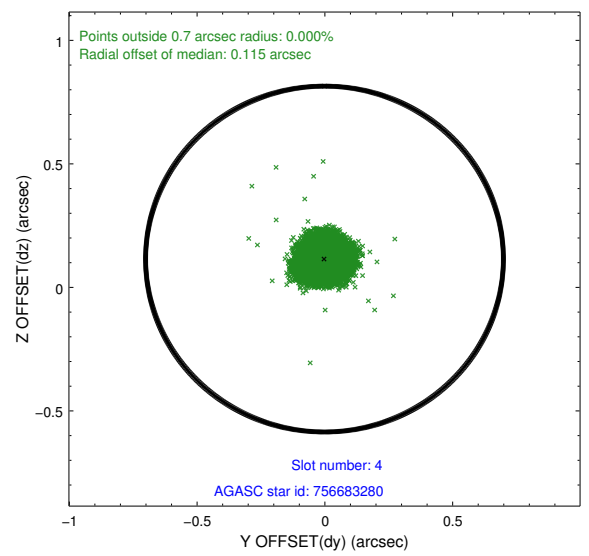
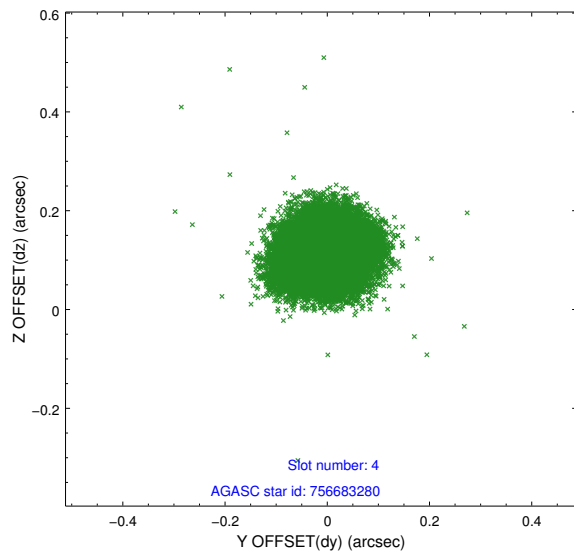
slot	status	id	mag	n_pts	med_dy	med_dz	dr1	dr2	ra	dec	mean_y	mean_z
0	FID	ACIS-S-2	6.92	9801	-0.082	-0.015	0.014	0.024	0.000000	0.000000	-767.80	-1736.04
1	FID	ACIS-S-4	7.01	9800	0.161	0.044	0.011	0.021	0.000000	0.000000	2145.70	172.50
2	FID	ACIS-S-5	7.04	9800	-0.110	-0.020	0.025	0.038	0.000000	0.000000	-1820.66	166.11
3	GUIDE	756678808	7.90	19599	-0.109	-0.077	0.062	0.097	321.235825	-8.179223	246.52	22.50
4	GUIDE	756683280	7.61	19597	-0.001	0.115	0.066	0.103	321.508348	-8.285130	-552.34	-647.74
5	GUIDE	756685960	9.38	19582	0.007	-0.149	0.102	0.171	321.404075	-8.563466	-1255.70	156.06
6	GUIDE	756686416	9.17	19574	0.036	-0.087	0.090	0.149	321.186871	-8.654392	-1175.26	991.63
7	GUIDE	758391560	7.15	19598	0.068	0.195	0.055	0.087	321.937562	-8.359835	-1517.87	-1862.95

2.4 Star Slots

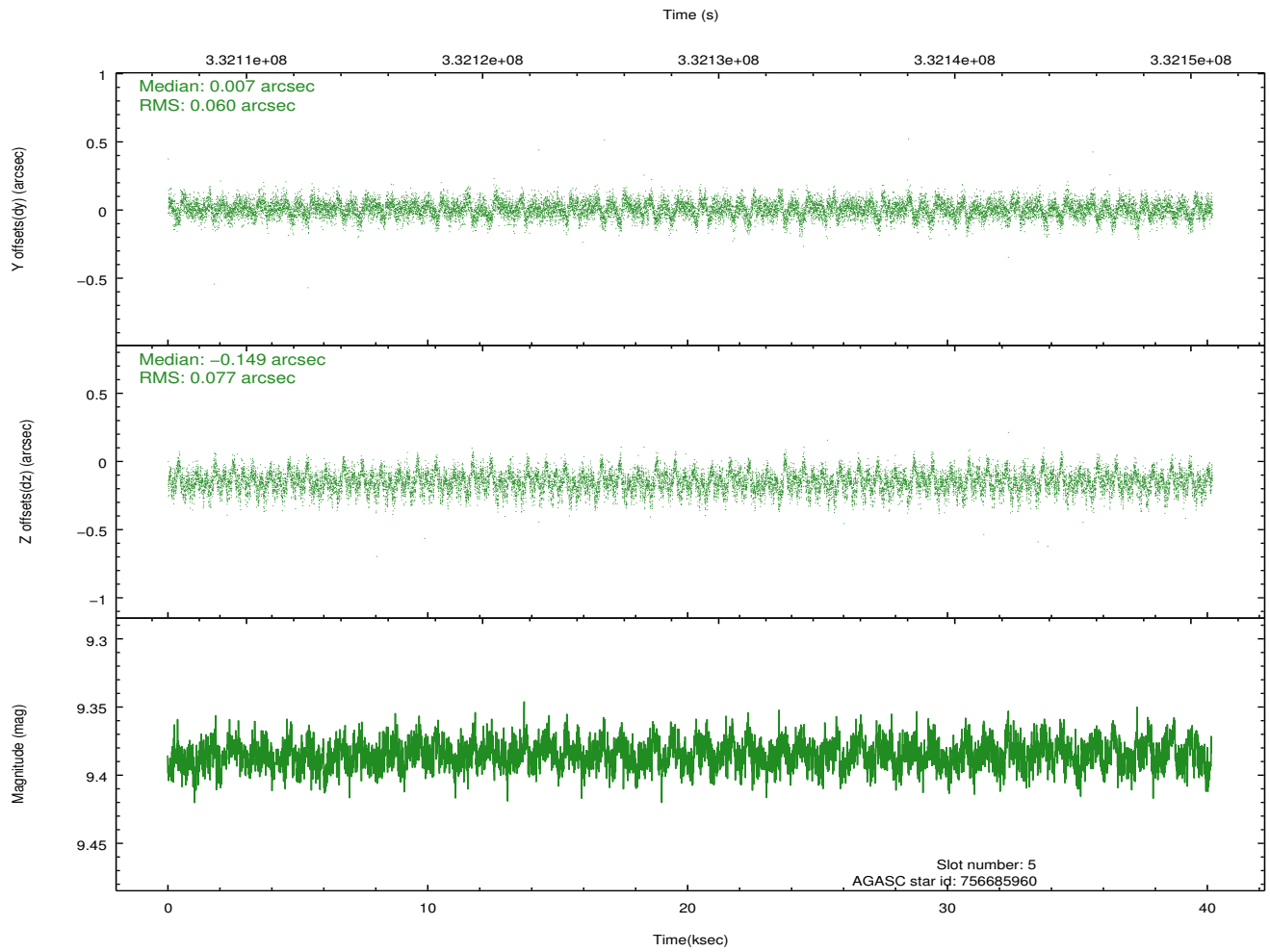
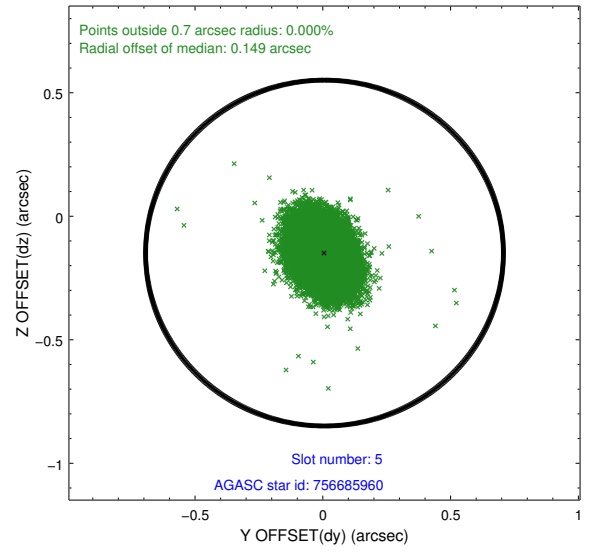
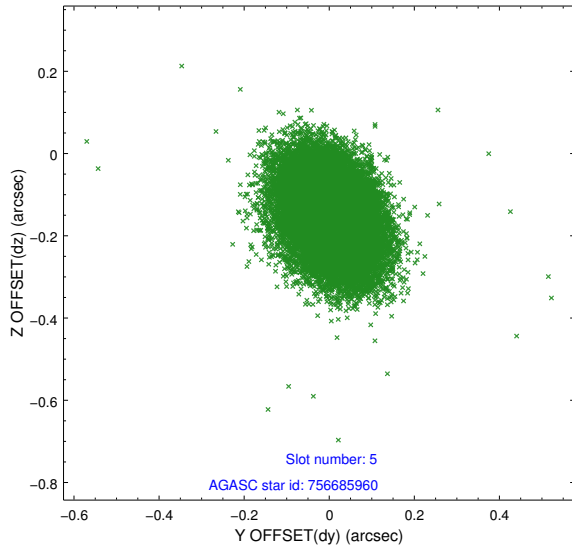
2.4.1 Slot 3



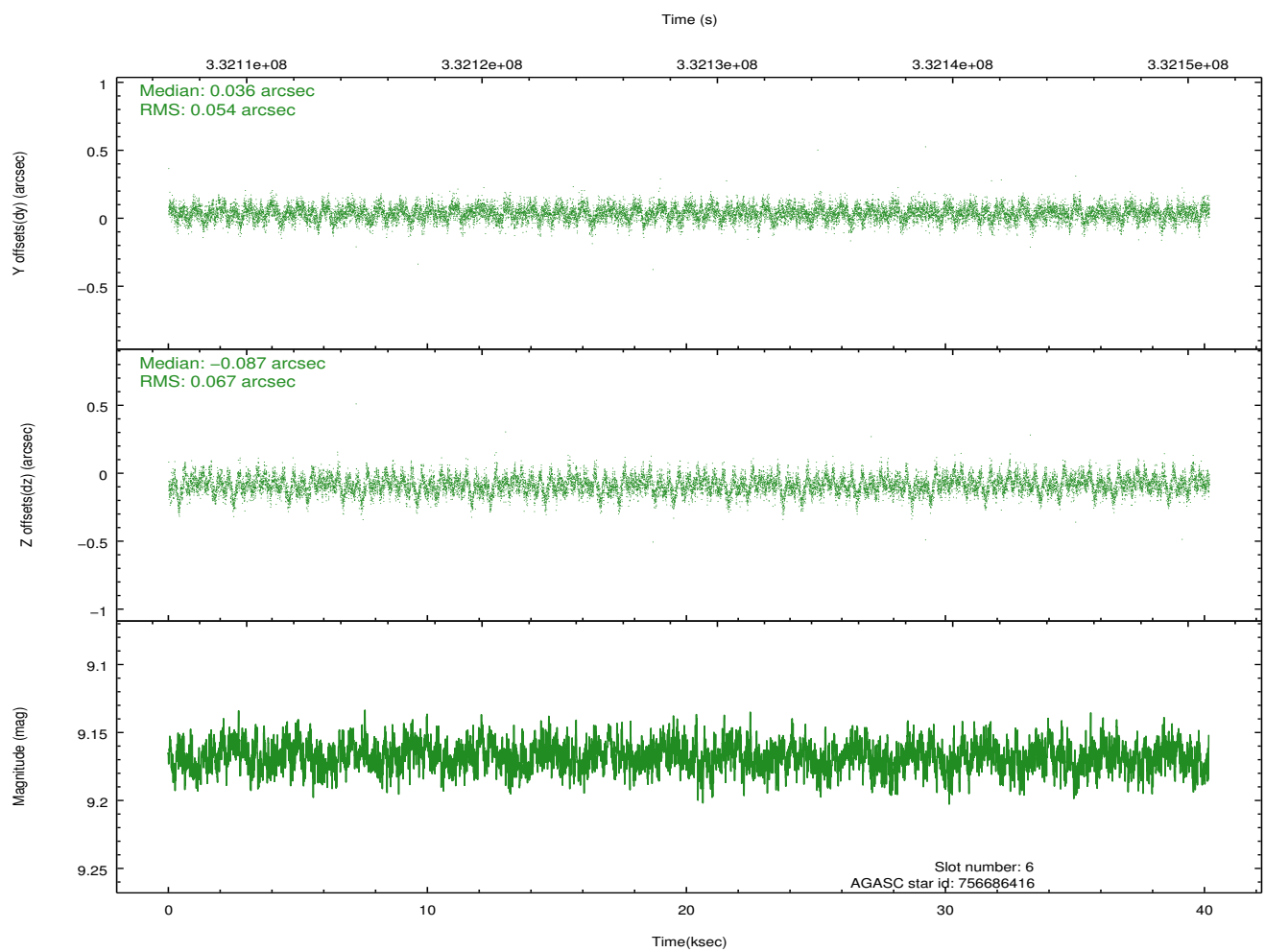
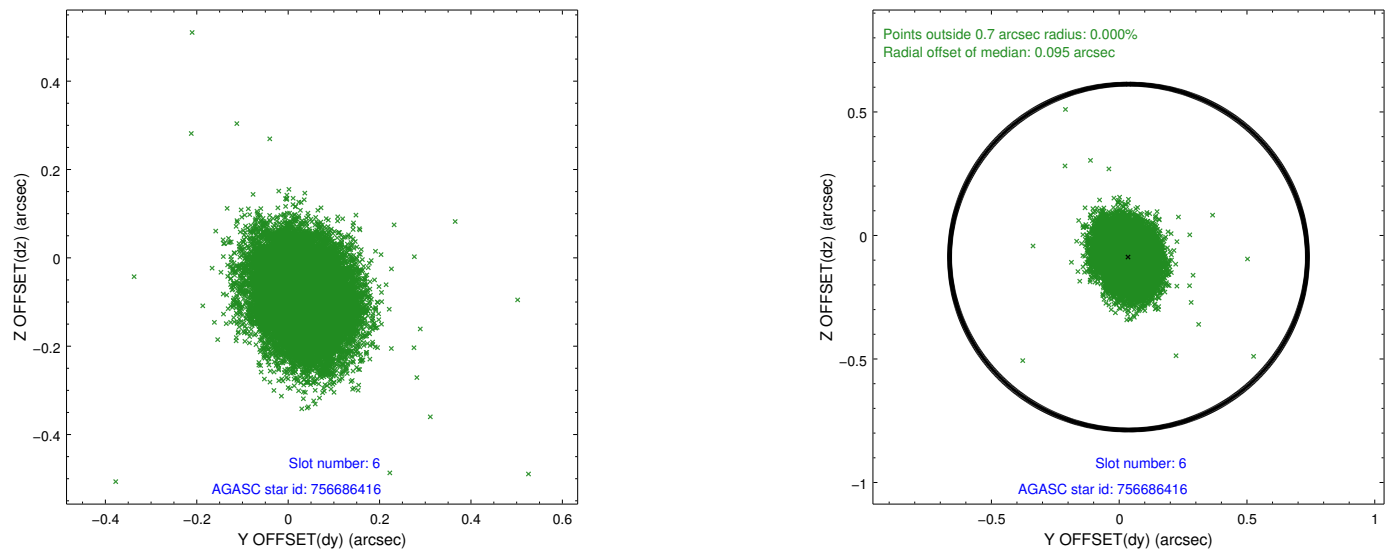
2.4.2 Slot 4



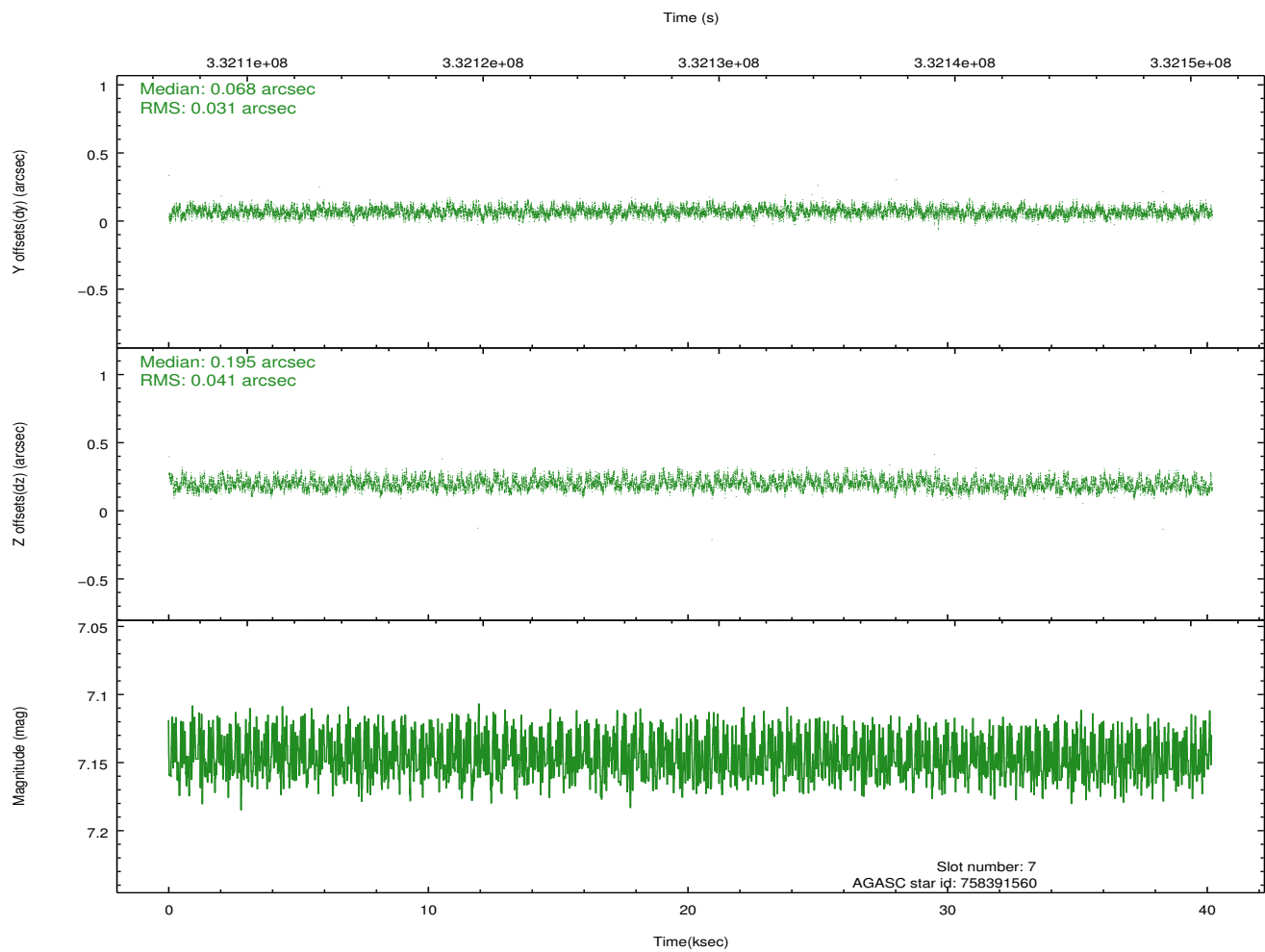
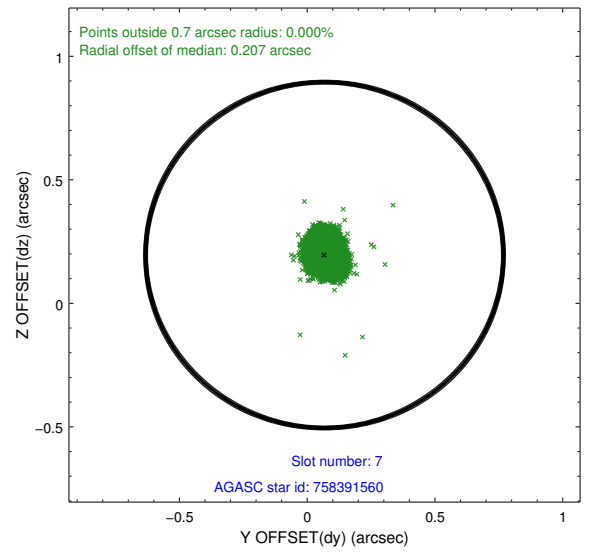
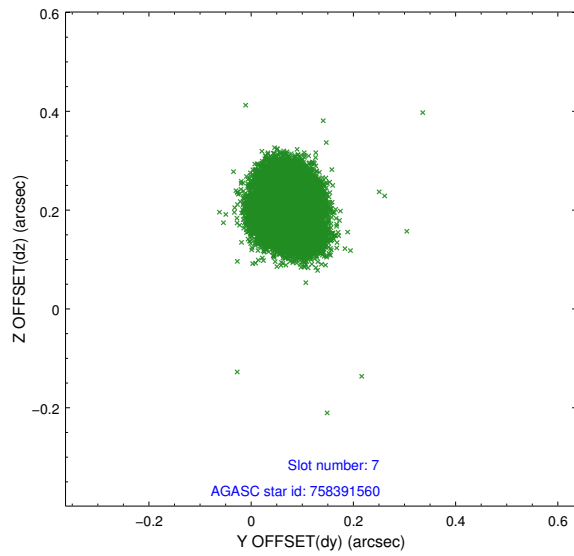
2.4.3 Slot 5



2.4.4 Slot 6

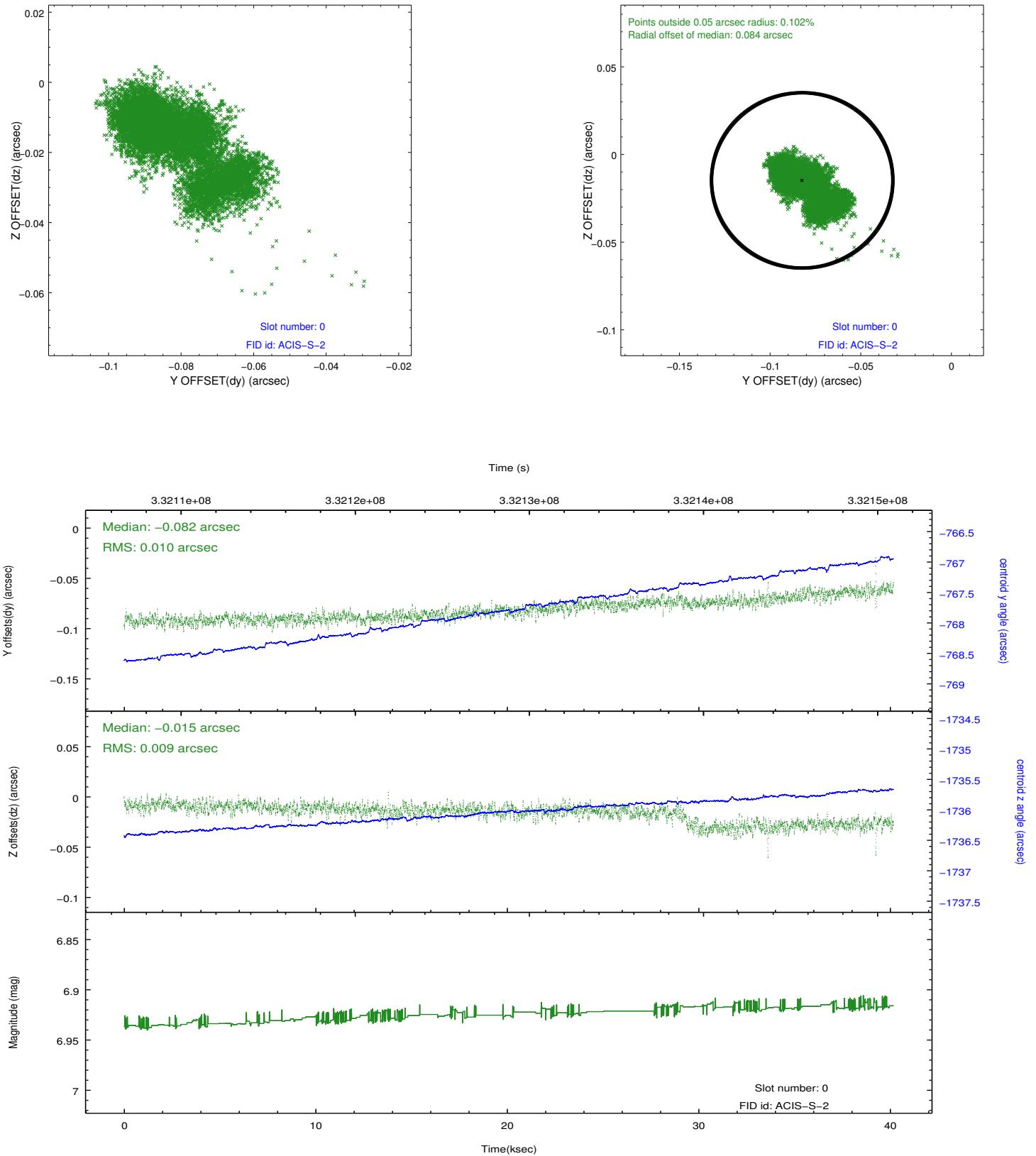


2.4.5 Slot 7

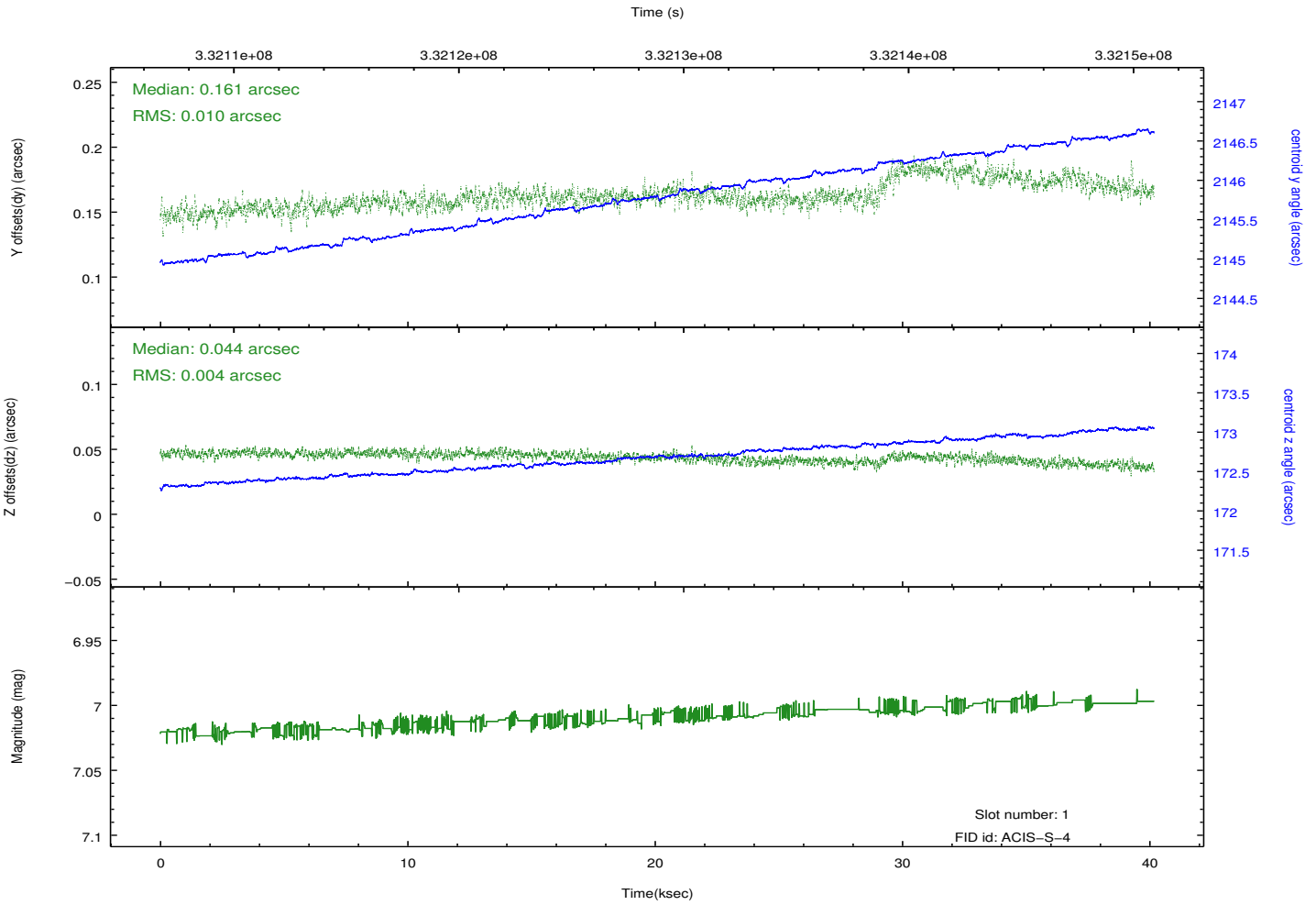
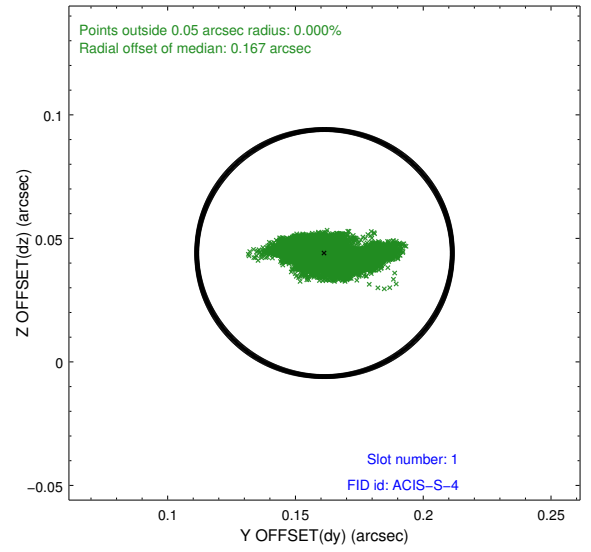
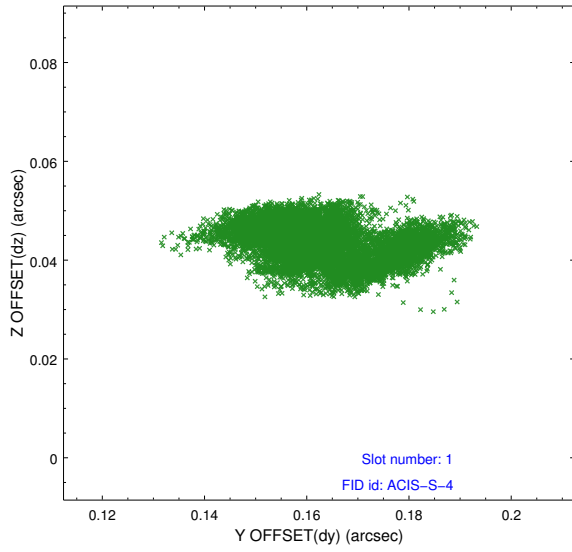


2.5 FID Slots

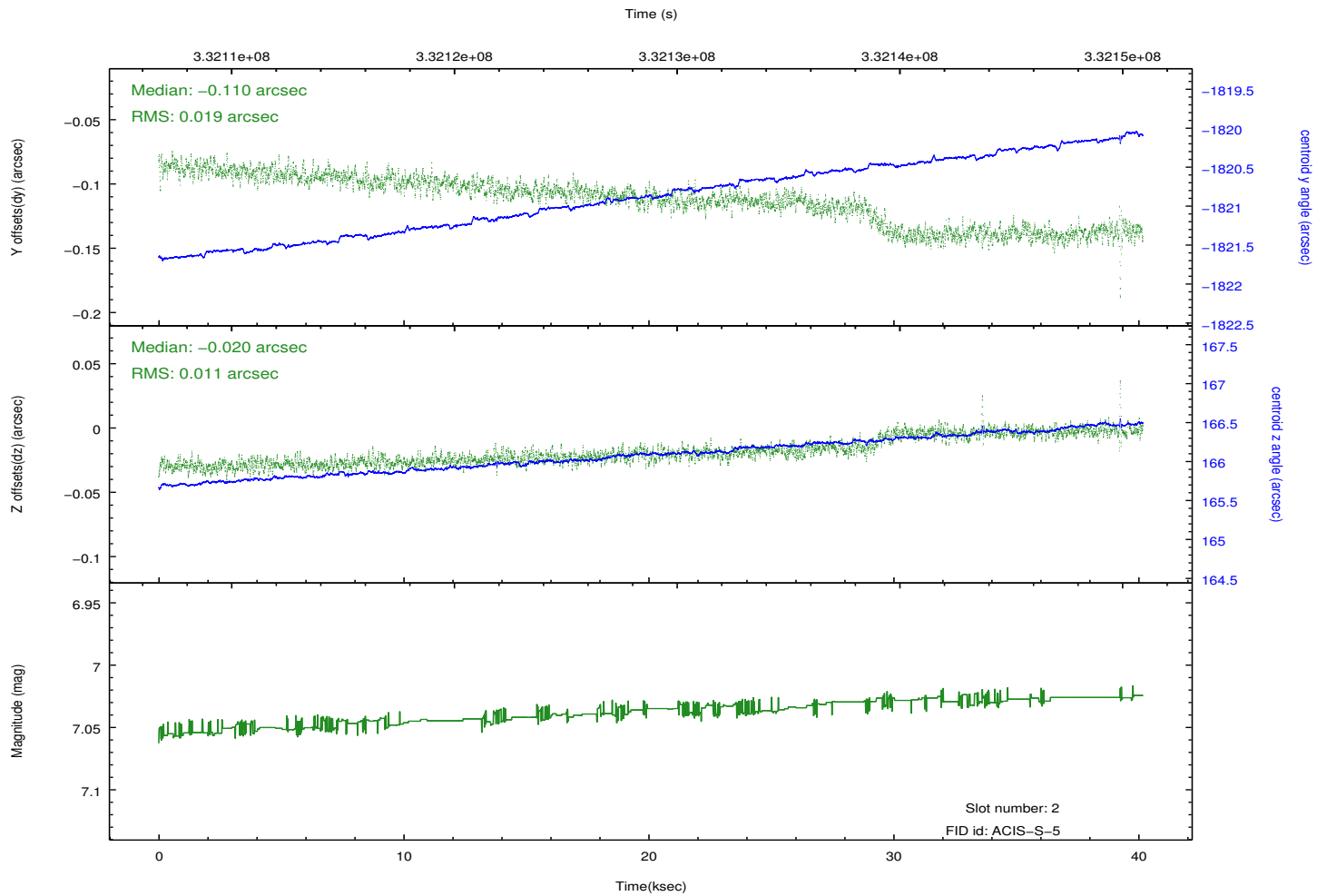
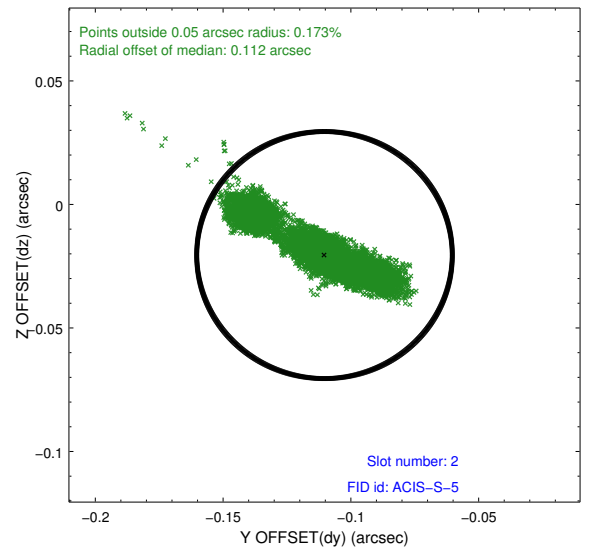
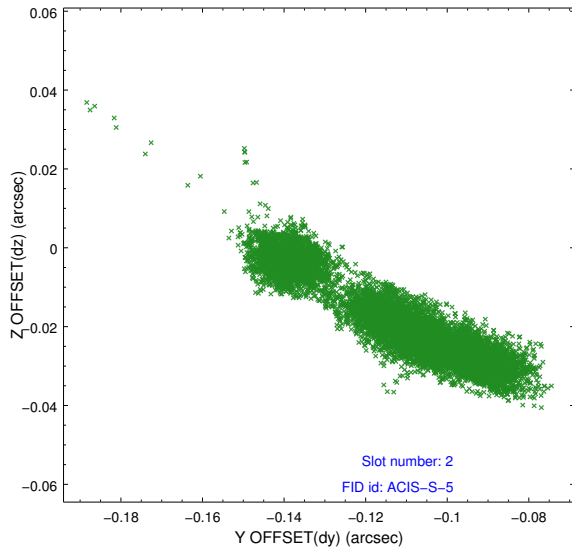
2.5.1 Slot 0



2.5.2 Slot 1



2.5.3 Slot 2



A Summary

A.1 Status

V&V Scientist	Beth Sundheim
V&V Date (YYYY-MM-DD)	2012.05.25
V&V Edition	1
V&V Disposition and Status	OK
V&V Charge Time	40.1811976

A.2 Comments